

RIDGELAND

CITY OF RIDGELAND MADISON COUNTY, MISSISSIPPI STEED ROAD IMPROVEMENTS

PHASE 1

MAYOR

GENE F. McGEE

MAYOR PRO TEM

HARVEY CARR, JR.

CITY ATTORNEY

JERRY MILLS

BEGINNING OF ADD ALTERNATE

AT STA. 90+00

BEGINNING OF PROJECT PHASE 1

AT STA. 98+00

BOARD OF ALDERMEN

BRIAN BARCELLONA

AL BIBLE

HARVEY CARR, JR.

LINDA DAVIS

DARYL SMITH

R. JOSEPH BARLOW

CHUCK KOBERT

PUBLIC WORKS DIRECTOR

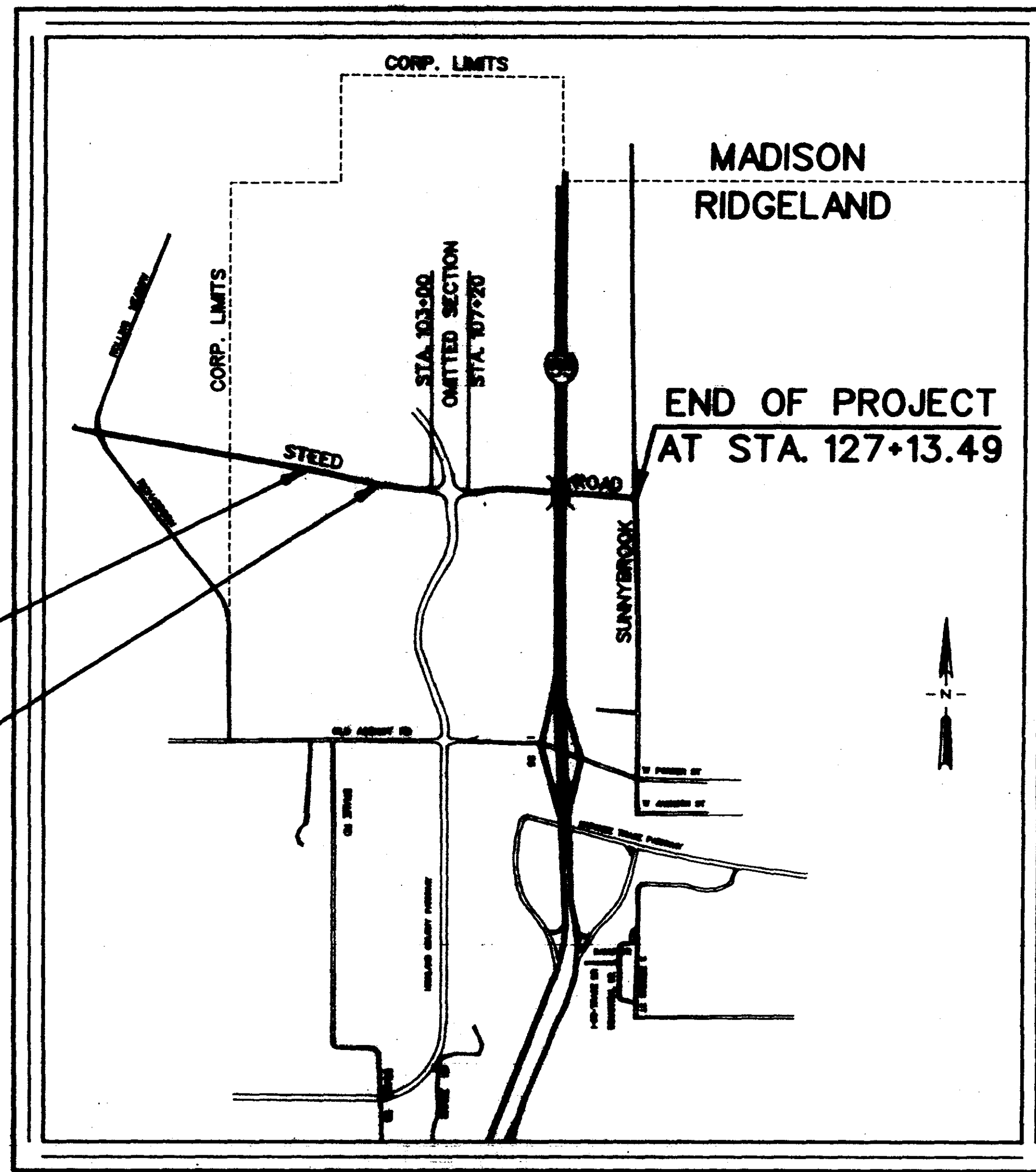
SAM VINSON, P.E.

ASSISTANT PUBLIC WORKS DIRECTOR

SID HAWTHORNE

CITY CLERK

MICHAEL McPHEARSON

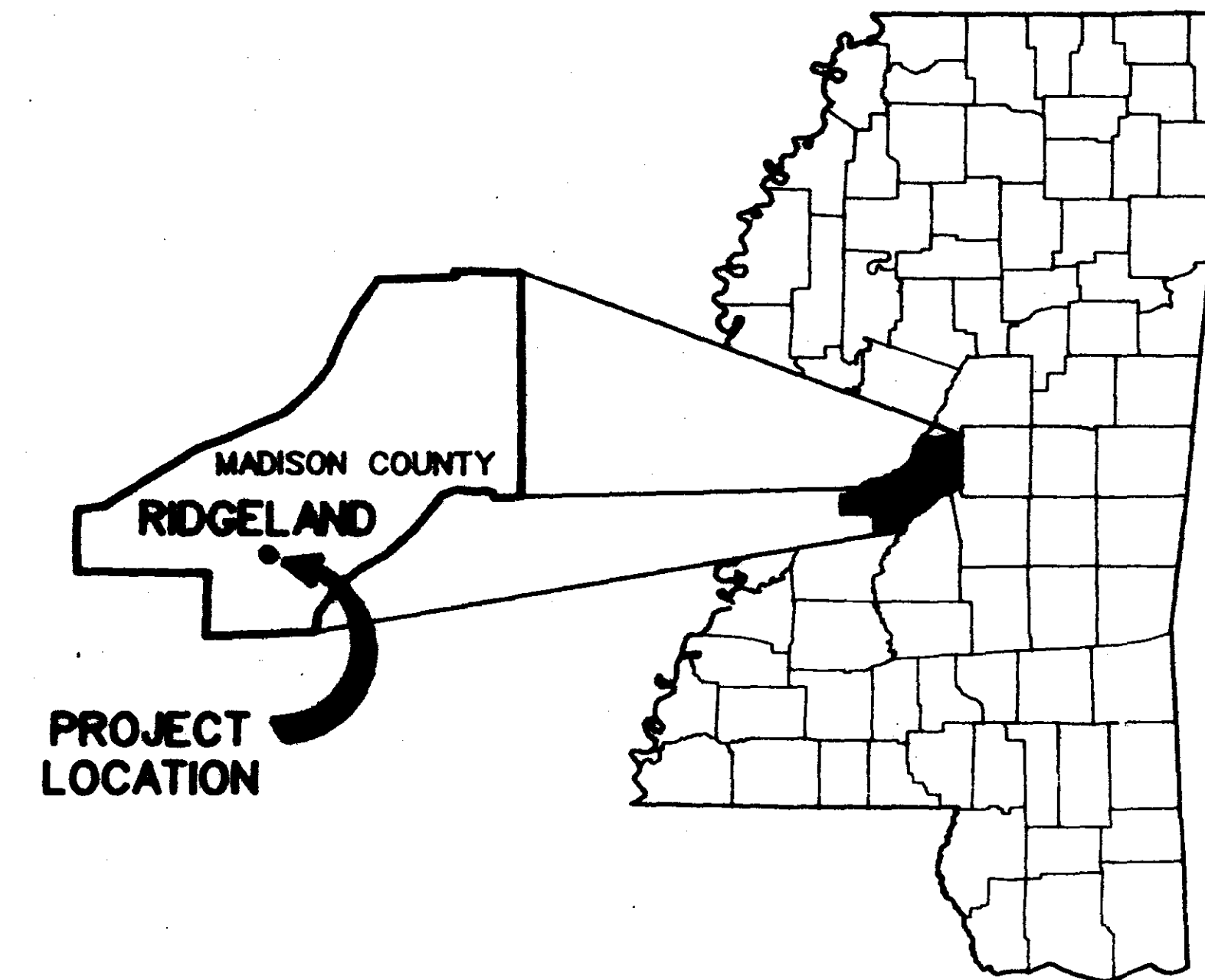


VICINITY MAP

JUNE 1993

LENGTH DATA

	ADD ALTERNATE	PHASE 1	TOTAL		
LENGTH OF ROADWAY	800.00	2483.49	3283.49	FT.	0.624 M.
LENGTH OF BRIDGES	0	0	0	FT.	0 M.
LENGTH OF PROJECT (NET)	800.00	2483.49	3283.49	FT.	0.624 M.
LENGTH OF EXCEPTIONS	0	420.00	420.00	FT.	0.080 M.
LENGTH OF PROJECT (GROSS)	800.00	2913.49	3713.49	FT.	0.703 M.
SUNNYBROOK ROAD	-	1420.00	1420.00	FT.	0.289 M.



LOCATION MAP

DESIGN CONTROL
40 MPH - V (SPEED DESIGN)
ADT (1993) - 500; ADT (2013) - 5000
DHW - 500; D - 55; z - 7 - 5

PREPARED BY :



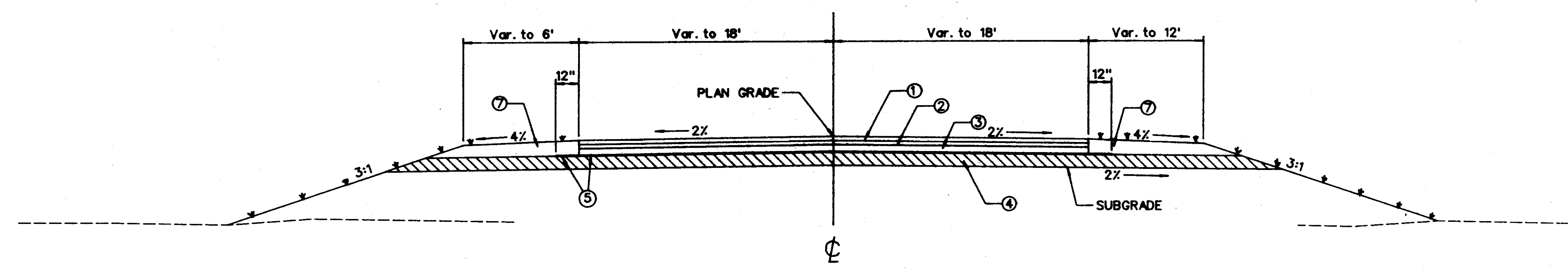
NEEL-SCHAFFER, INC,
Engineers • Planners
Jackson, Mississippi



DATE: 7-7-93

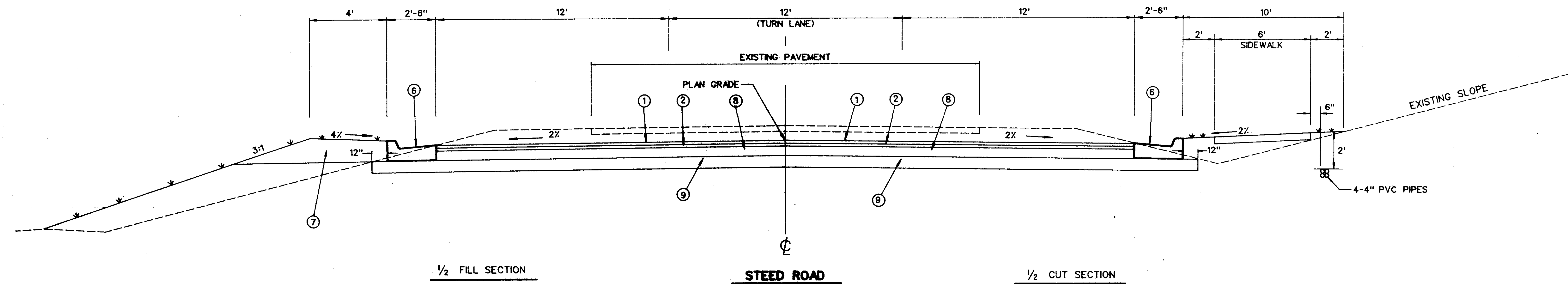
MARK G. BAILEY, P.E.
MISSISSIPPI LICENSE NO. 8245

PWP-01923



STEED ROAD TYPICAL SECTION
STA. 90+00 TO STA. 92+00

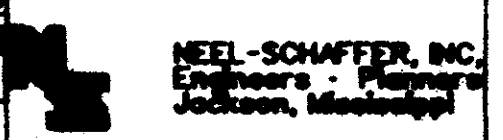
- ① 1 1/2" PLANT MIX PAVEMENT (SURFACE COURSE) REQ'D.
- ② 1 1/2" PLANT MIX PAVEMENT (BINDER COURSE) REQ'D.
- ③ 3" PLANT MIX BITUMINOUS BASE COURSE REQ'D.
- ④ 6" GRANULAR MAT'L. REQ'D. (CLASS 5, GROUP C)
- ⑤ BITUMINOUS PRIME REQ'D. (MAY BE DELETED WHEN PERMITTED BY THE ENGINEER).
- ⑥ COMBINATION CURB & GUTTER REQ'D. (TYPE 1 MOD.)
- ⑦ UNCL. EXC. (BACKFILL) REQ'D.
- ⑧ 6" PLANT MIX BITUMINOUS BASE COURSE REQ'D.
- ⑨ 6" LIME TREATED SUBGRADE REQ'D.
- * * * * * EROSION CONTROL TREATMENT REQ'D.

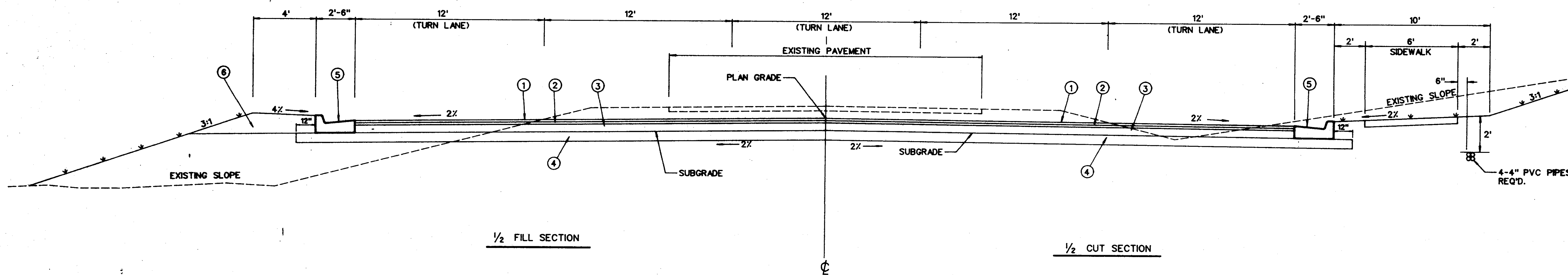


1/2 FILL SECTION

STEED ROAD
TYPICAL SECTION STA. 92+00 TO SUNNYBROOK RD.

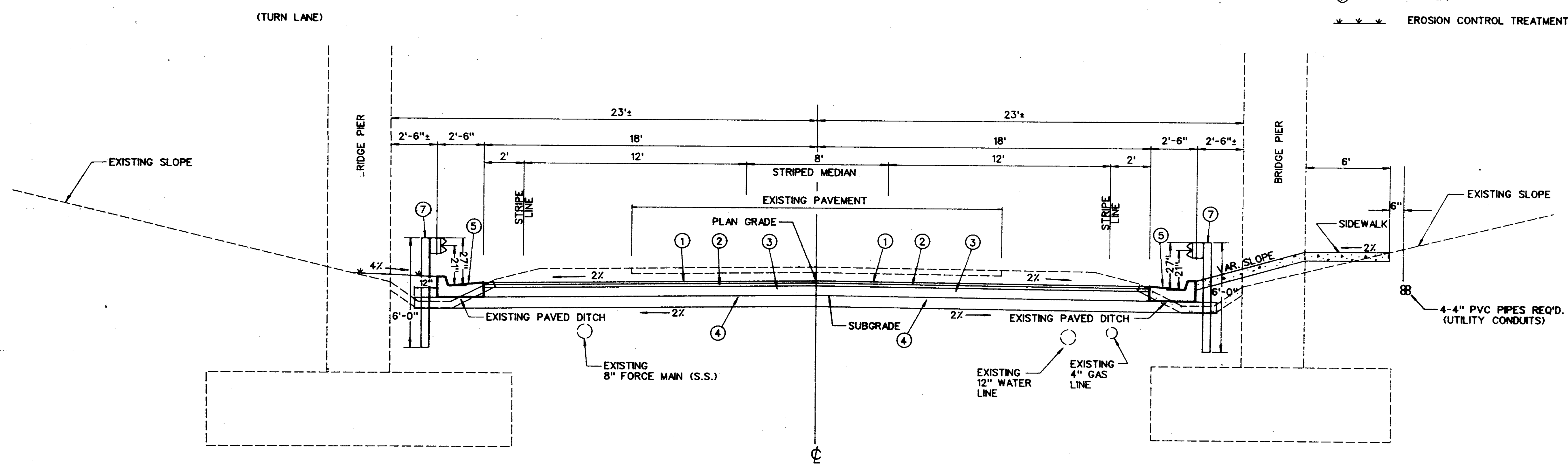
1/2 CUT SECTION

TYPICAL SECTION STEED ROAD		DRAWING NO. TS-1 3
DSGN: AWK 6/93	DRWN: DCB 6/93	 NEEL-SCHAFFER, INC. Engineers - Planners Jackson, Mississippi
CHKD: []	SCALE: N/A	



**STEED RD. TYPICAL SECTION
(5-LANE SECTION AT HIGHLAND COLONY PARKWAY)**

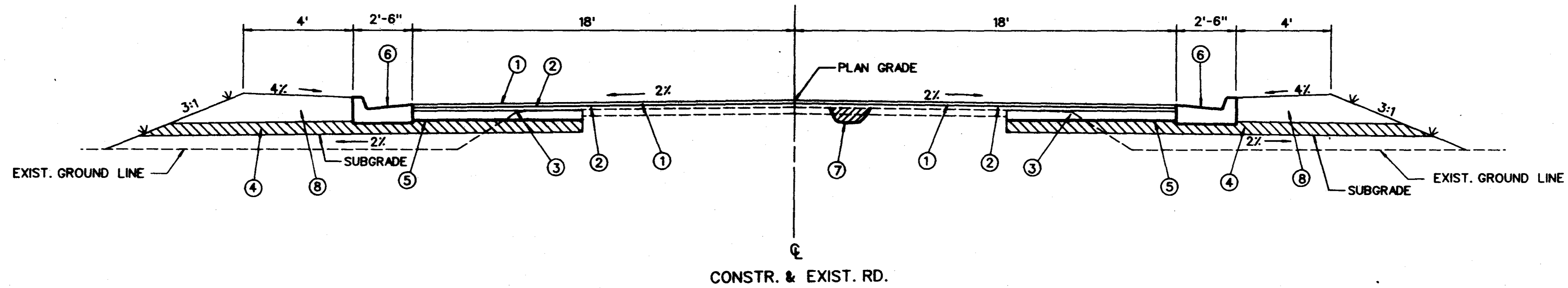
- ① 1/2" PLANT MIX PAVEMENT (SURFACE COURSE) REQ'D.
 - ② 1/2" PLANT MIX PAVEMENT (BINDER COURSE) REQ'D.
 - ③ 6" PLANT MIX BITUMINOUS BASE COURSE REQ'D.
 - ④ 6" LIME TREATED SUBGRADE REQ'D.
 - ⑤ COMBINATION CURB & GUTTER REQ'D (TYPE 1 MOD.)
 - ⑥ UNCL. EXC. (BACKFILL) REQ'D.
 - ⑦ GUARD RAIL REQ'D.
- * * * EROSION CONTROL TREATMENT REQ'D.



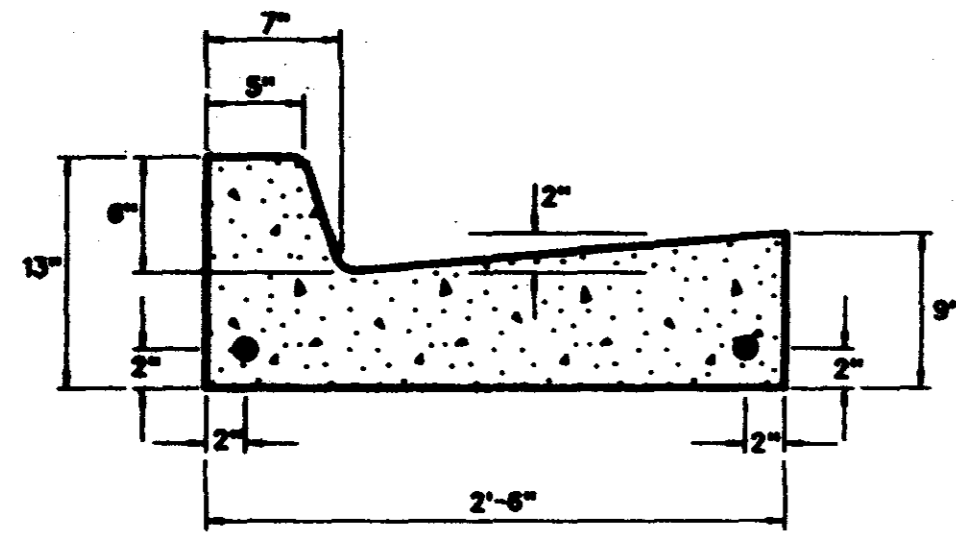
**STEED ROAD
TYPICAL SECTION UNDER I-55 BRIDGES**

TYPICAL SECTION STEED ROAD	
VICINITY OF HIGHLAND COLONY PARKWAY AND I-55 BRIDGES	
DESIGNED BY: DRAWN BY: CHECKED BY: SCALE:	DRAWING NO. TS-2 4

NEEL-SCHAFER, INC.
Engineers & Surveyors
Jackson, Mississippi

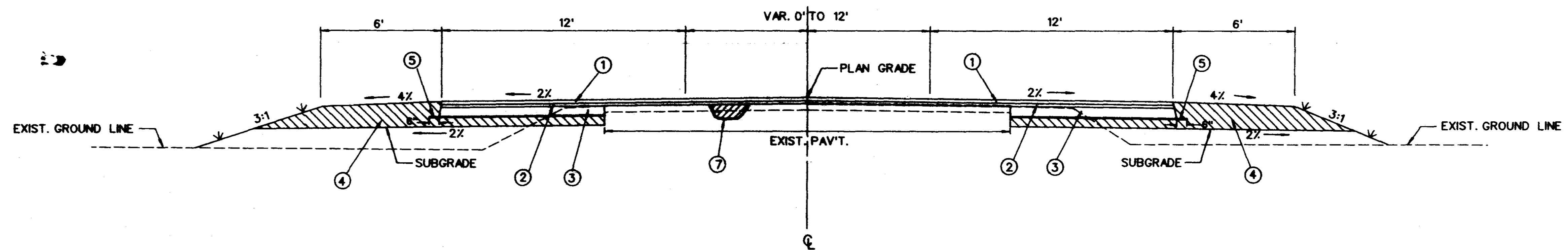


TYPICAL SECTION (CURBED)
SUNNYBROOK ROAD



DETAIL
CURB & GUTTER (TYPE 1 MOD.)

- ① 1/2" HOT BIT. PAVEMENT (SURFACE COURSE) REQ'D.
 - ② 1/2" HOT BIT. PAVEMENT (BINDER COURSE) REQ'D.
 - ③ 5" BITUMINOUS BASE COURSE REQ'D.
 - ④ 6" & VAR. GRANULAR MAT'L. REQ'D. (CLASS 5, GROUP C)
 - ⑤ BITUMINOUS PRIME REQ'D. (MAY BE DELETED WHEN PERMITTED BY THE ENGINEER).
 - ⑥ COMBINATION CURB & GUTTER REQ'D (TYPE 1 MOD.)
 - ⑦ FAILED AREAS - EXCAVATE AND BACKFILL WITH VAR. DEPTH GRANULAR MAT'L. AND 6" BITUMINOUS BASE.
 - ⑧ UNCL. EXC. (BACKFILL) REQ'D.
- EROSION CONTROL TREATMENT REQ'D.

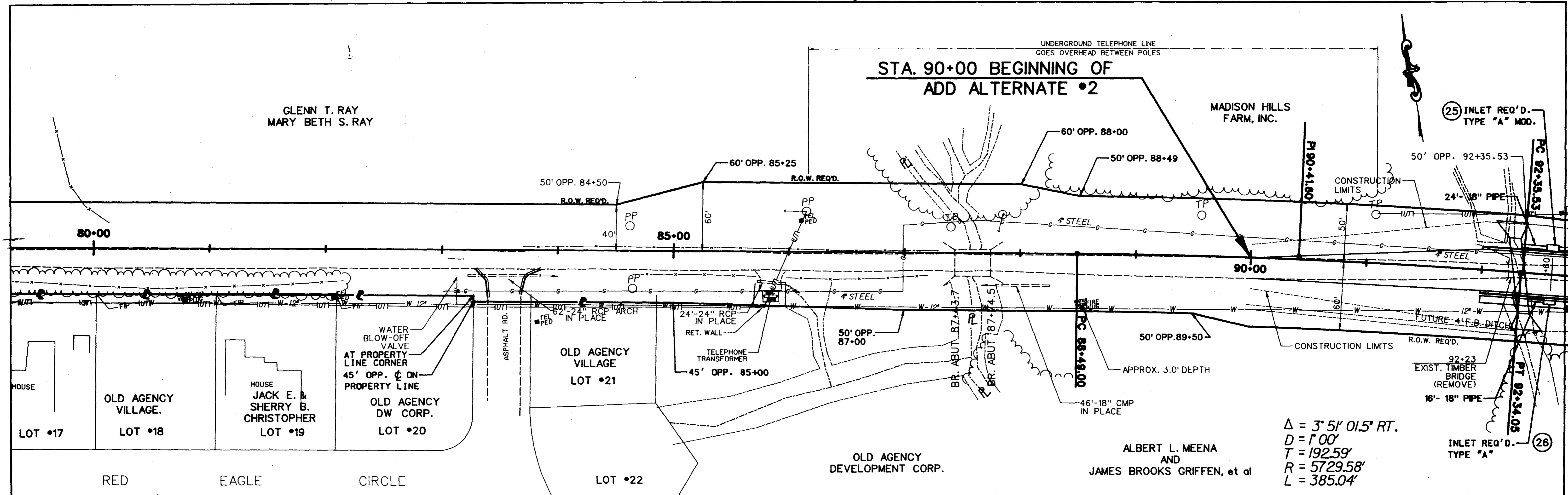


TYPICAL SECTION (NON CURBED)
SUNNYBROOK ROAD

TYPICAL SECTION
SUNNYBROOK ROAD

DATE	
BY	
REVISIONS	
NO.	
PLAN	
NOTE BOOK	
NO.	

DATE	
BY	
REVISIONS	
NO.	
PROFILE	
NOTE BOOK	
NO.	



MADISON HILLS FARM, INC.

MARTIN LEE ALMON AND BARBARA CAROL ALMON

MADISON HILLS FARM, INC.

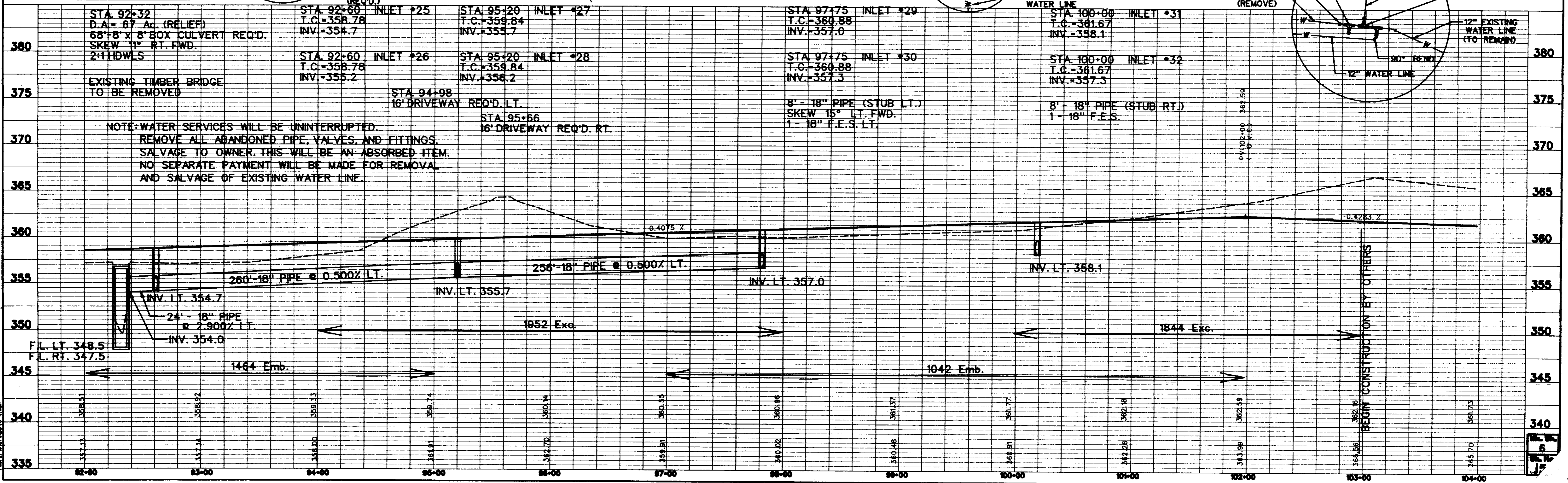
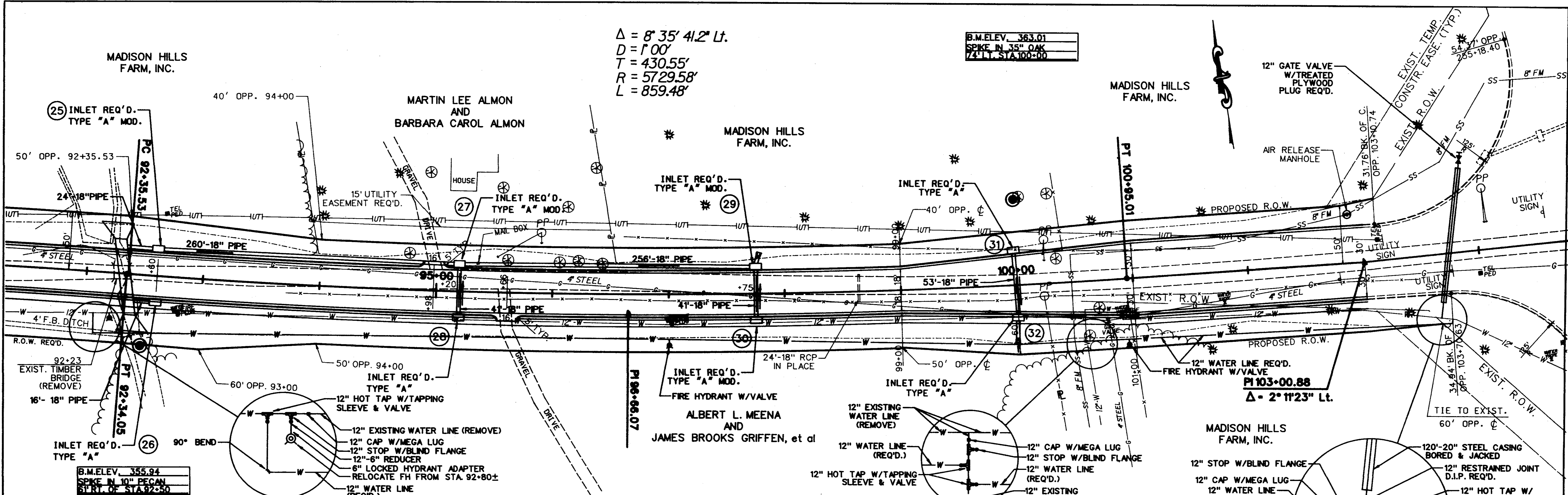
MADISON HILLS FARM, INC.

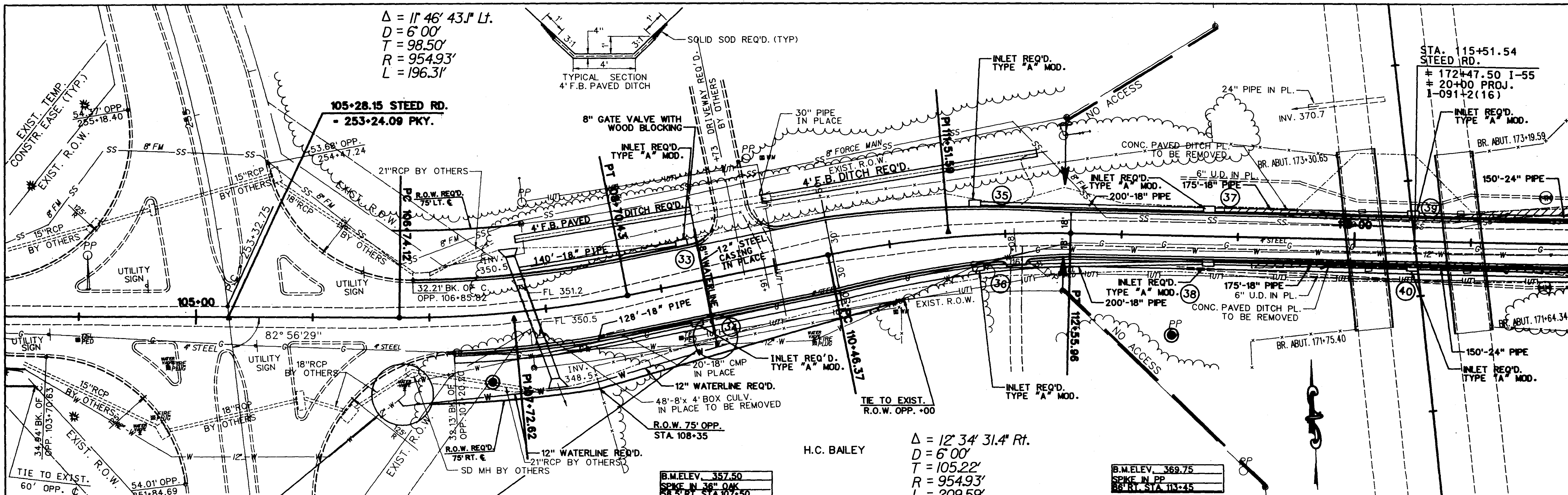
$\Delta = 8' 35" 41.2" Lt.$
 $D = 1' 00"$
 $R = 430.55'$
 $T = 5729.58'$
 $L = 859.48'$

B.M. ELEV. 363.01
 SPIKE IN 35" OAK
 74' LT. STA 100+00

DATE	
BY	
REVISION	
NO.	
PLAN	
NOTE BOOK	
FL. OF WAY CHANGED	
NO.	

DATE	
BY	
REVISION	
NO.	
PROFILE	
NOTE BOOK	
FL. OF WAY CHANGED	
NO.	



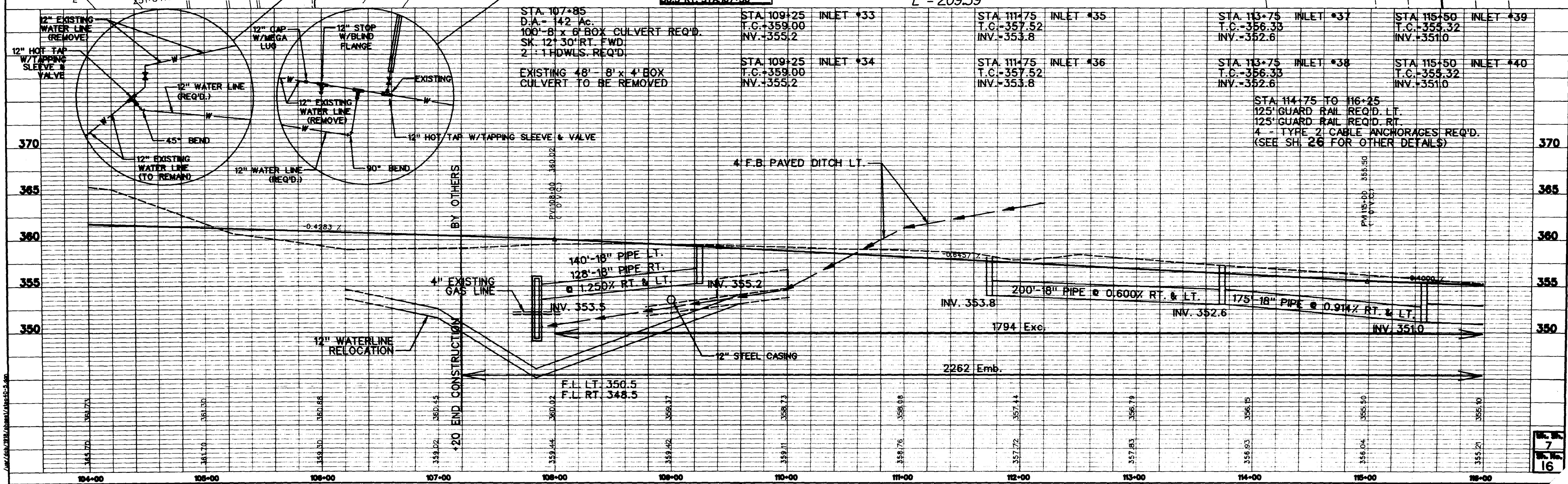


PLAN NOTE BOOK

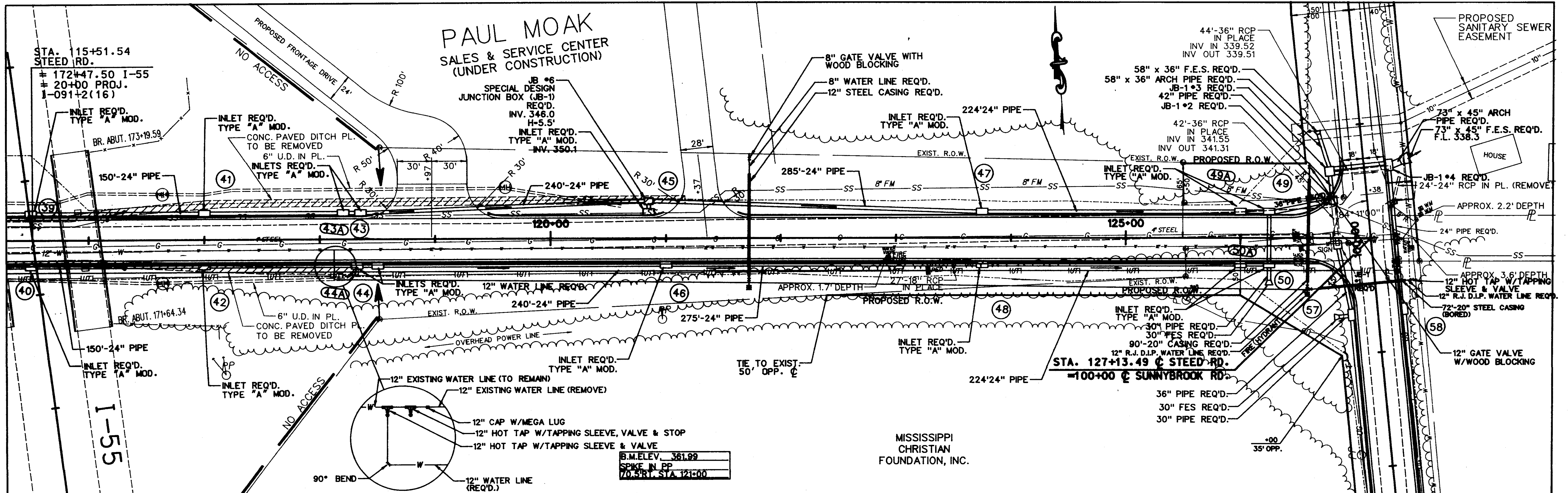
DATE	
BY	
CHECKED	
APPROVED	
REVISIONS	

PROFILE NOTE BOOK

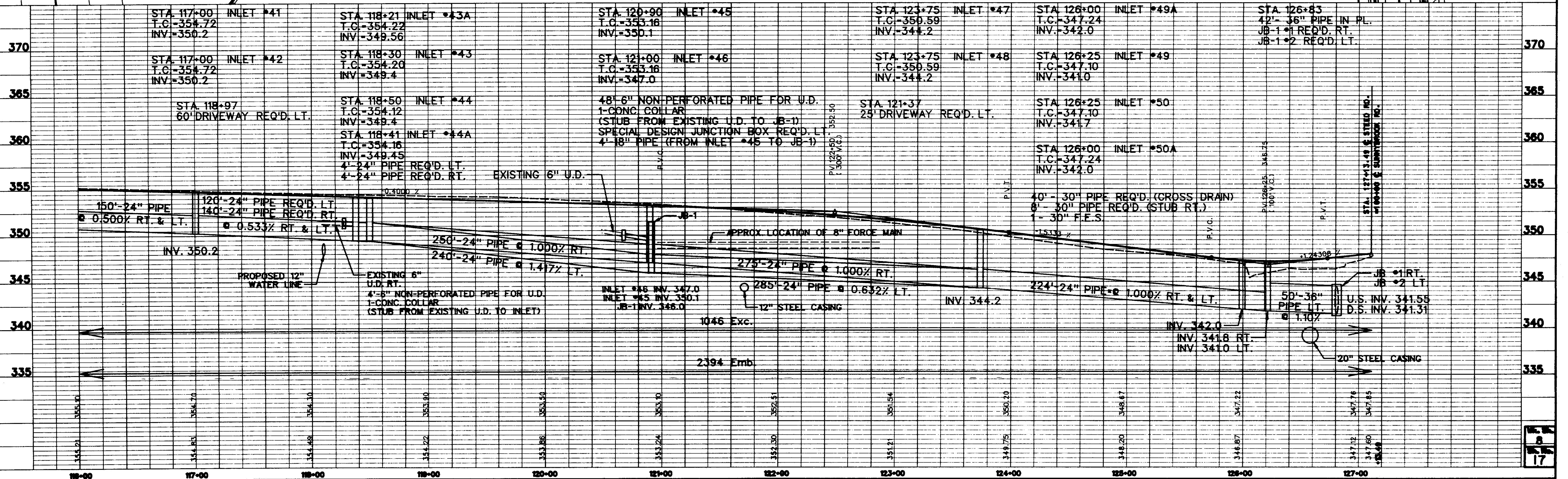
DATE	
BY	
CHECKED	
APPROVED	
REVISIONS	



**PAUL MOAK
SALES & SERVICE CENTER
(UNDER CONSTRUCTION)**



B.M. ELEV. 361.99
SPIKE IN PP
70.5' RT. STA. 121+00



Station	Inlet	Inlet Elevation	Notes
117+00	41	350.2	150'-24" PIPE
117+00	42	350.2	150'-24" PIPE
118+21	43A	349.56	120'-24" PIPE REQ'D. LT.
118+30	43	349.4	140'-24" PIPE REQ'D. RT.
118+50	44	349.4	60' DRIVEWAY REQ'D. LT.
118+41	44A	349.45	4'-24" PIPE REQ'D. LT.
118+41	44A	349.45	4'-24" PIPE REQ'D. RT.
120+90	45	350.1	250'-24" PIPE @ 1.000% RT.
121+00	46	347.0	240'-24" PIPE @ 1.417% LT.
121+37	47	344.2	275'-24" PIPE @ 1.000% RT.
121+37	48	344.2	285'-24" PIPE @ 0.632% LT.
126+00	49A	342.0	224'-24" PIPE @ 1.000% RT & LT.
126+25	49	341.0	
126+25	50	341.7	
126+00	50A	342.0	
126+83	58	338.3	42'-36" PIPE IN PL.
126+83	58	338.3	42'-36" ARCH PIPE REQ'D.
126+83	58	338.3	73" x 45" F.E.S. REQ'D.
126+83	58	338.3	F.L. 338.3

PLAN
NOTE BOOK
NO.

PROFILE
NOTE BOOK
NO.

MISSISSIPPI
CHRISTIAN
FOUNDATION, INC.

DATE	
BY	
REVISIONS	
NO.	
PLAN	
NOTE BOOK	
NO.	

DATE	
BY	
REVISIONS	
NO.	
PROFILE	
NOTE BOOK	
NO.	

