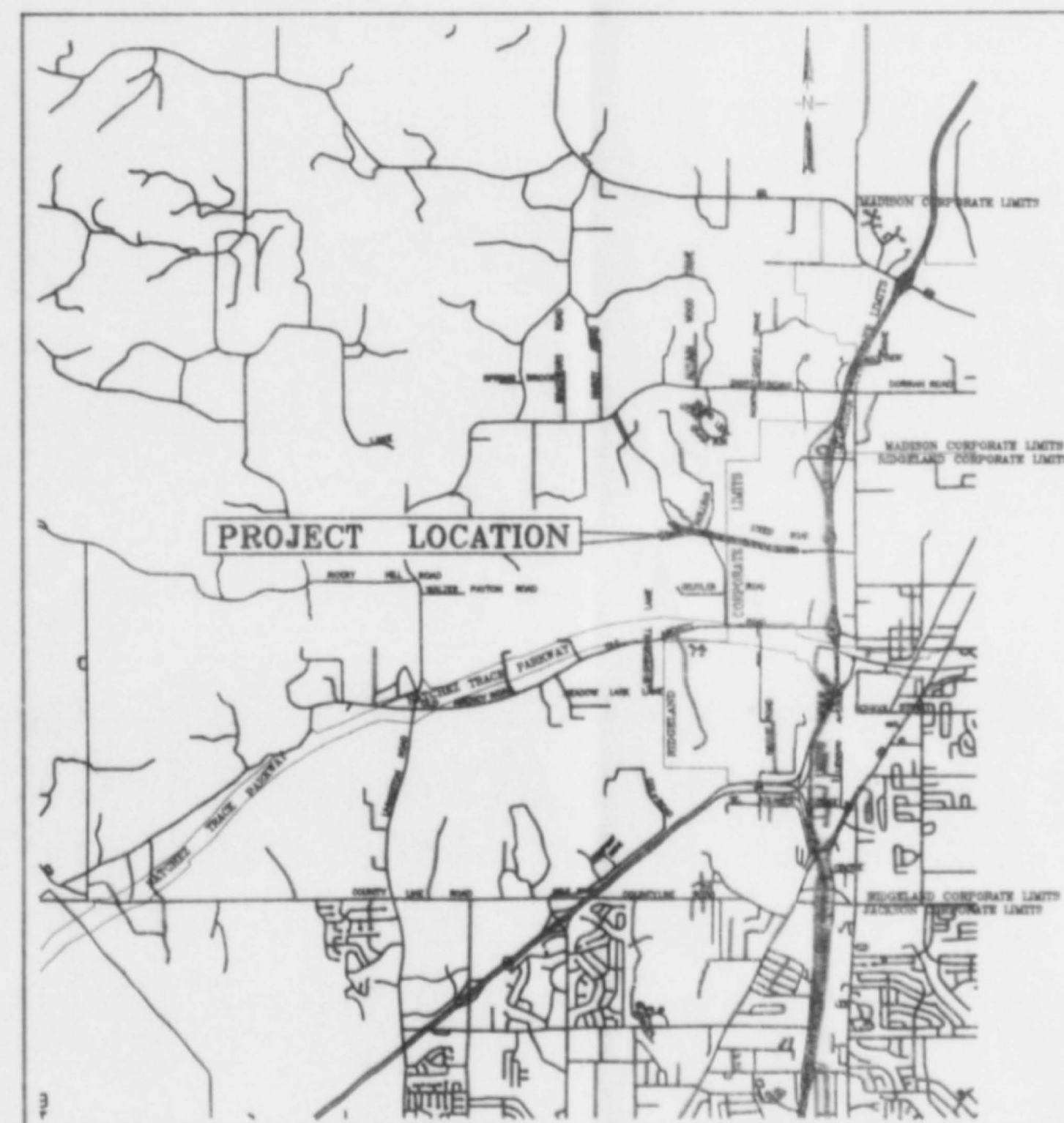


CITY OF RIDGELAND, MISSISSIPPI
HILLVIEW SUBDIVISION
12" WATER MAIN EXTENSION

Mayor:
Gene F. McGee

Mayor Pro Tem:
Harvey Carr, Jr.

City Attorney:
Jerry Mills



VICINITY MAP

Aldermen:

Brian Barcellona
Al Bible
Harvey Carr, Jr.
Linda Davis
Daryl Smith

Acting Public Works Director:
Sid Hawthorne

Acting City Clerk:
Becky Dixon

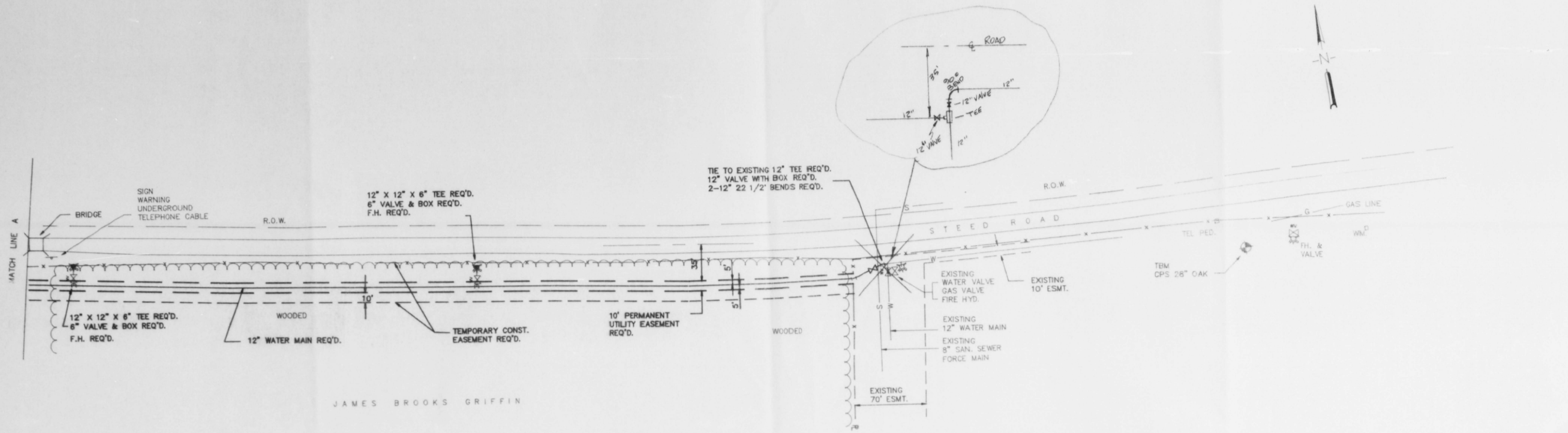
November 1989

WAGGONER ENGINEERING, INC.
Consulting Engineers
Jackson, Mississippi

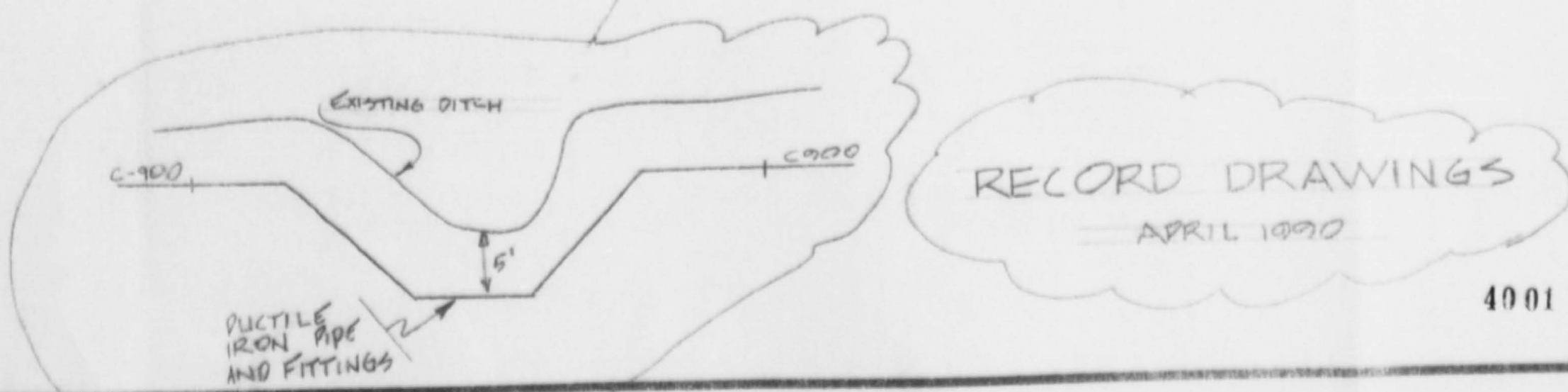
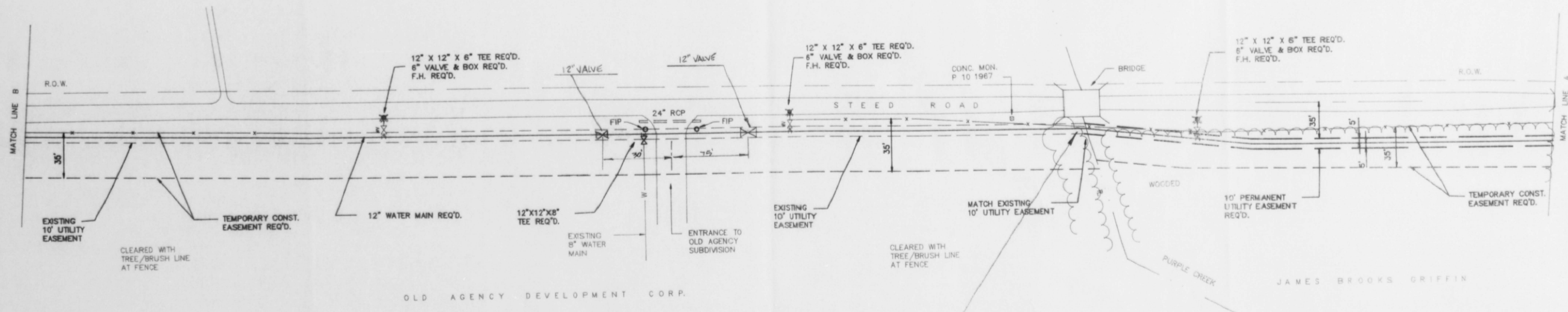
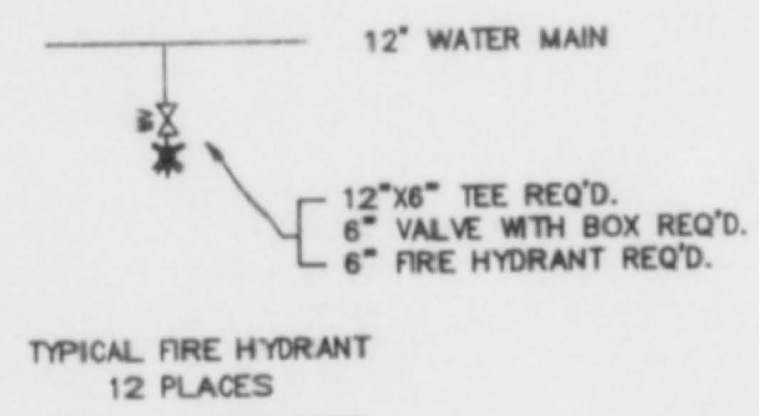
4000

RECORD DRAWINGS

APRIL 1990

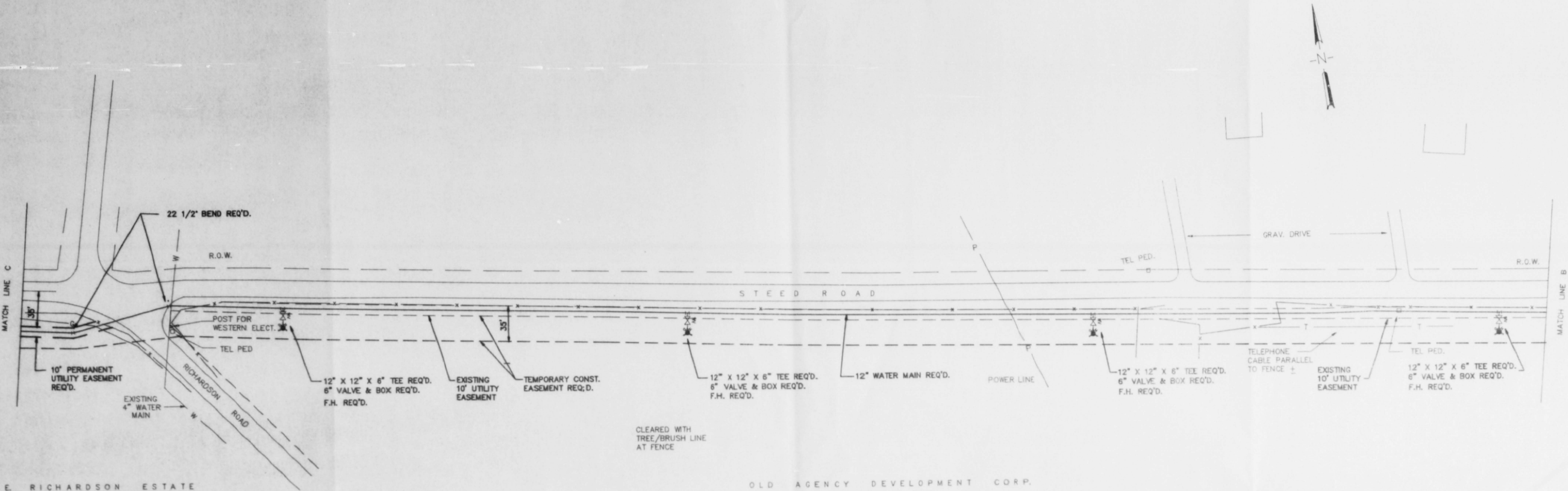


JAMES BROOKS GRIFFIN



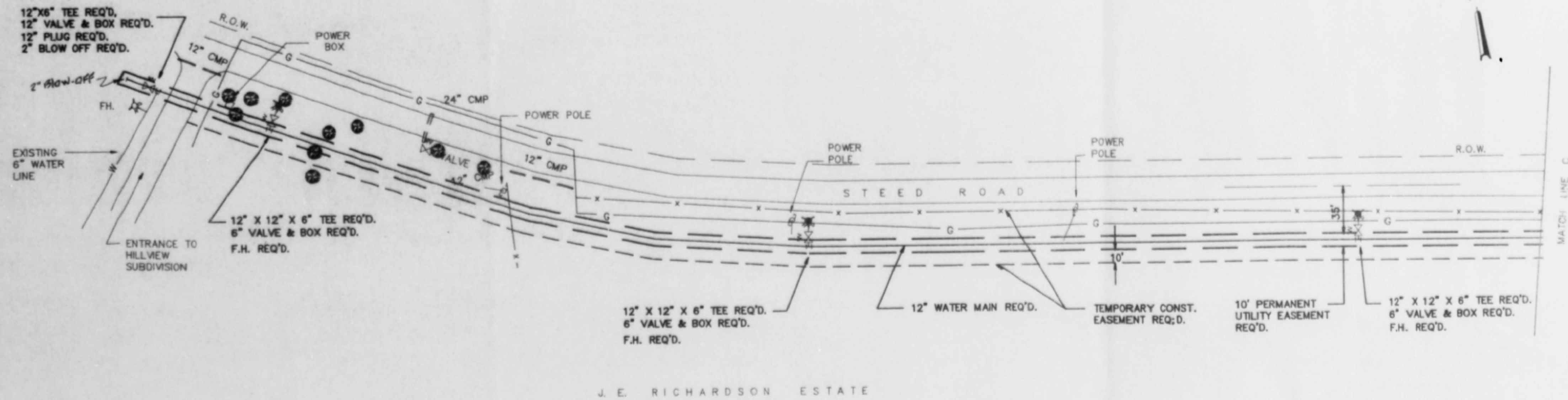
RECORD DRAWINGS
APRIL 1990

CITY OF RIDGELAND			
HILLVIEW SUBDIVISION			
12" WATER MAIN EXTENSION			
WAGGONER ENGINEERING, INC.			
Consulting Engineers - Jackson, Mississippi			
DRAWN BY	J.W.P.	DATE	11-9-89
DESIGNED BY		SCALE	1" = 50'
			SHEET NUMBER 2 of 4



J. E. RICHARDSON ESTATE

OLD AGENCY DEVELOPMENT CORP.

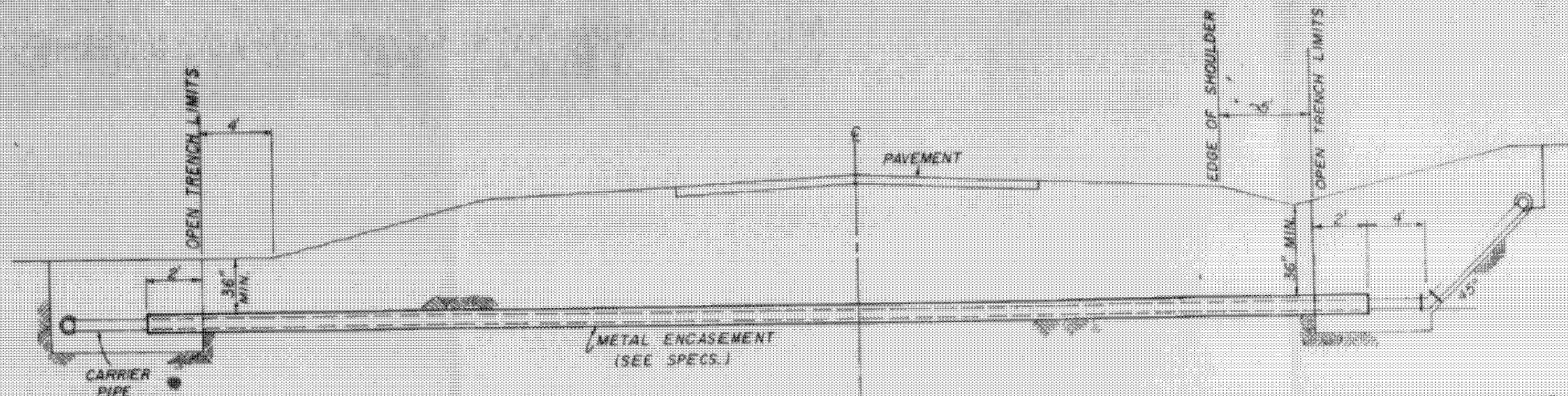


J. E. RICHARDSON ESTATE

RECORD DRAWINGS
APRIL 1990

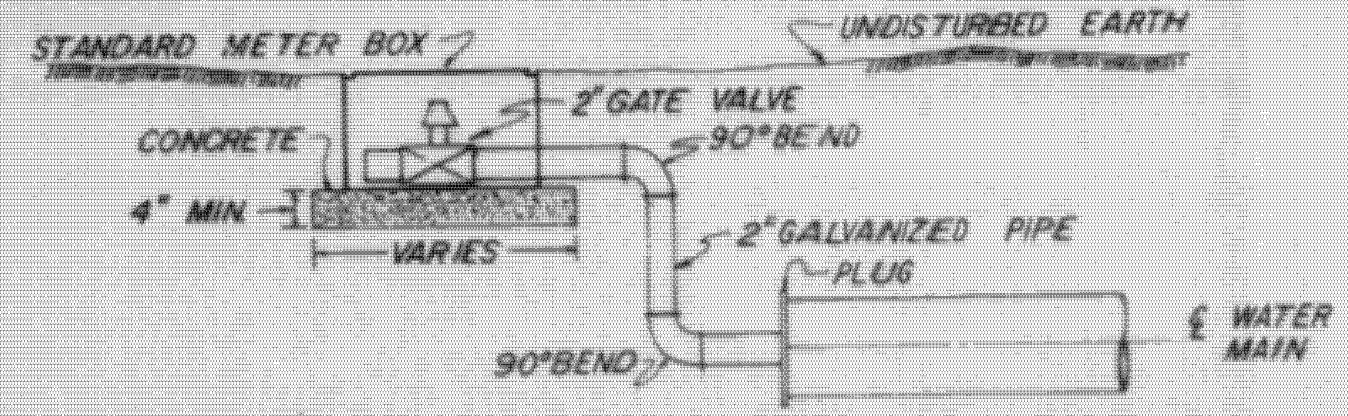
4002

CITY OF RIDGELAND		
HILLVIEW SUBDIVISION		
12" WATER MAIN EXTENSION		
WAGGONER ENGINEERING, INC. Consulting Engineers - Jackson, Mississippi		
DRAWN BY: J.W.P.	DATE: 11-9-89	SHEET NUMBER
CHECKED BY:	SCALE: 1" = 50'	3 OF 4

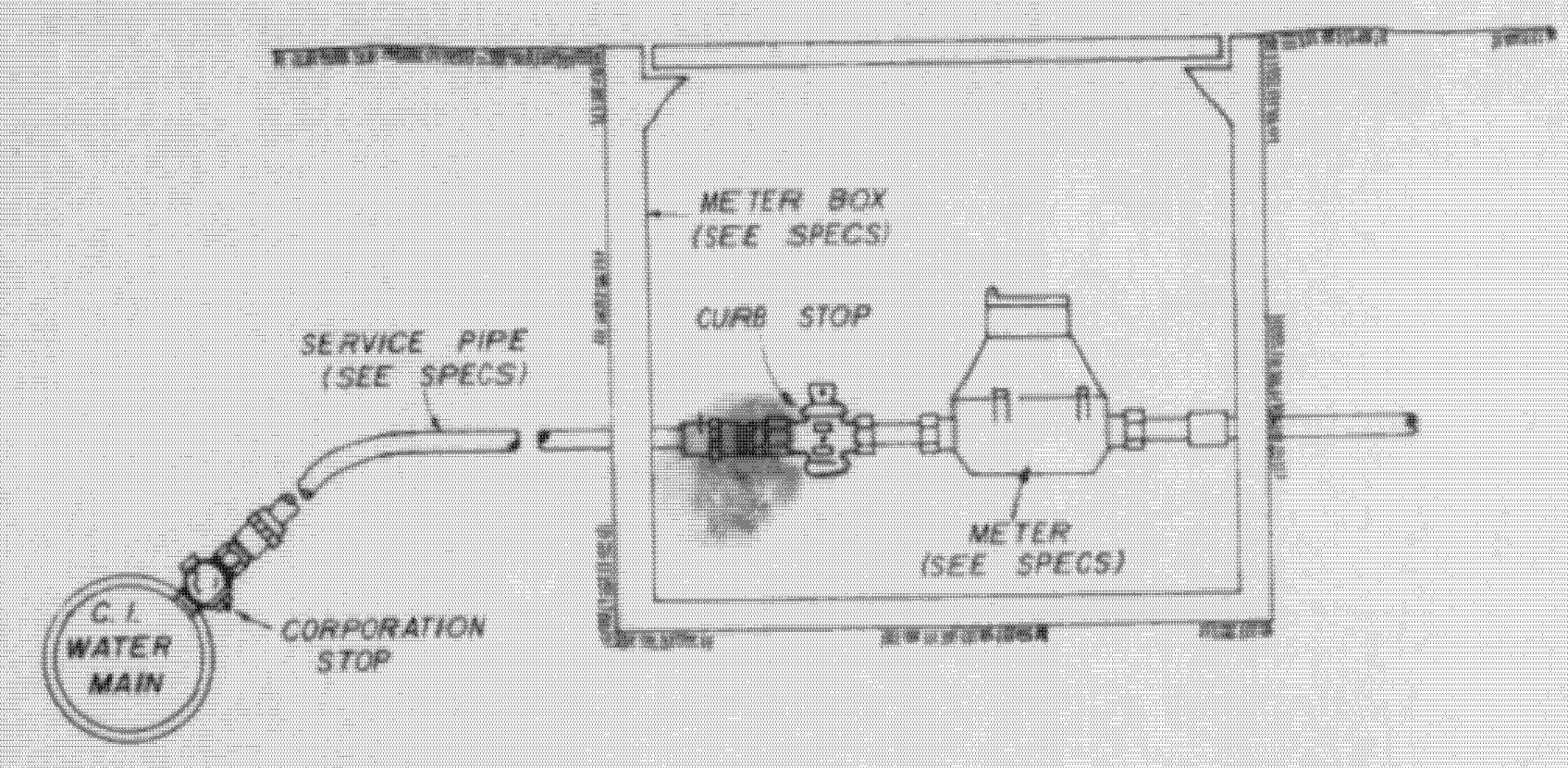


NOTE: COMPENSATION FOR CONCRETE THRUST BLOCKS SHALL BE INCLUDED IN THE UNIT PRICE BID FOR VALVES, FIRE HYDRANTS AND FITTINGS.

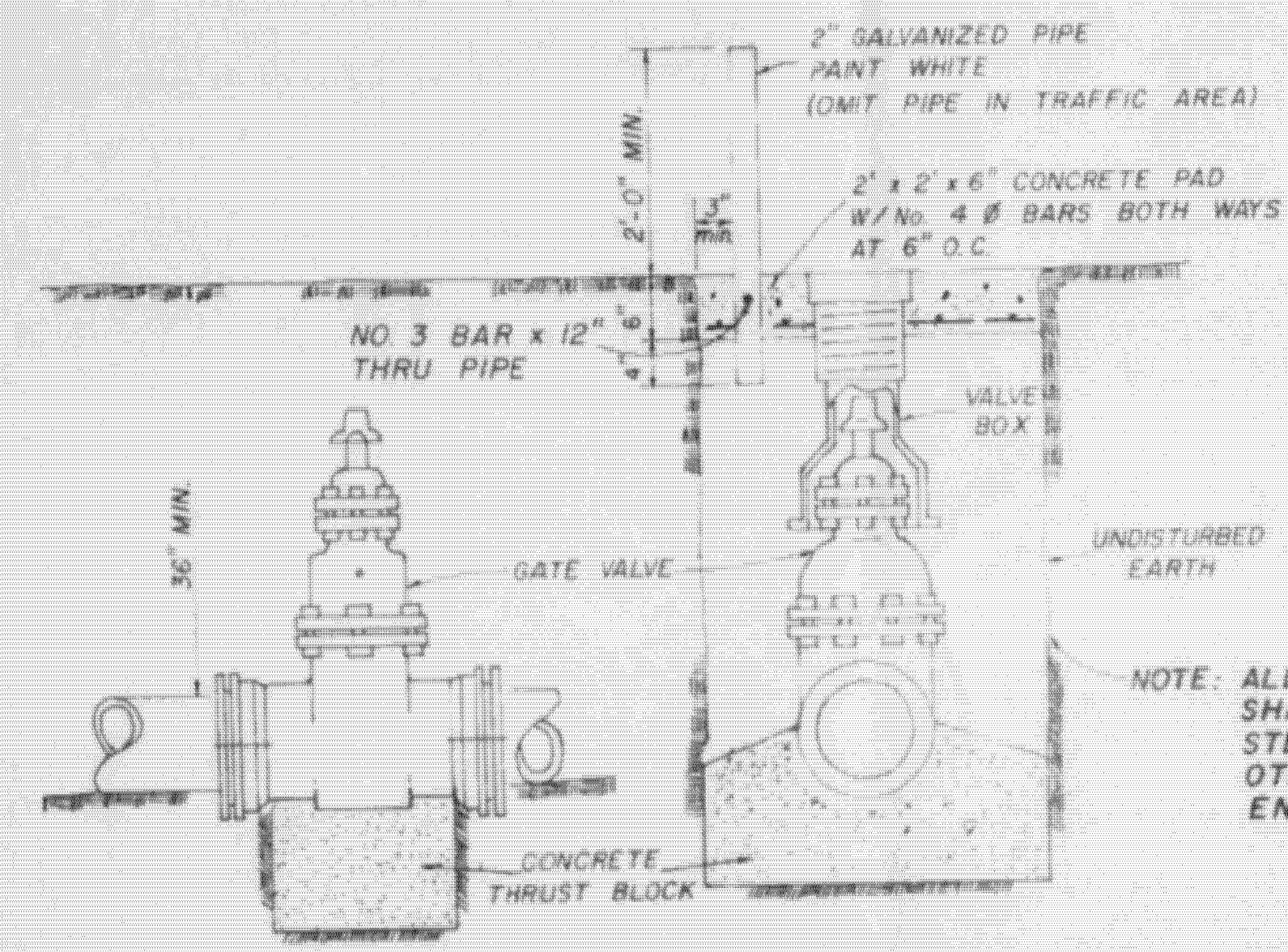
TYPICAL CASSED CROSSING



TYPICAL 2" BLOW-OFF DETAIL

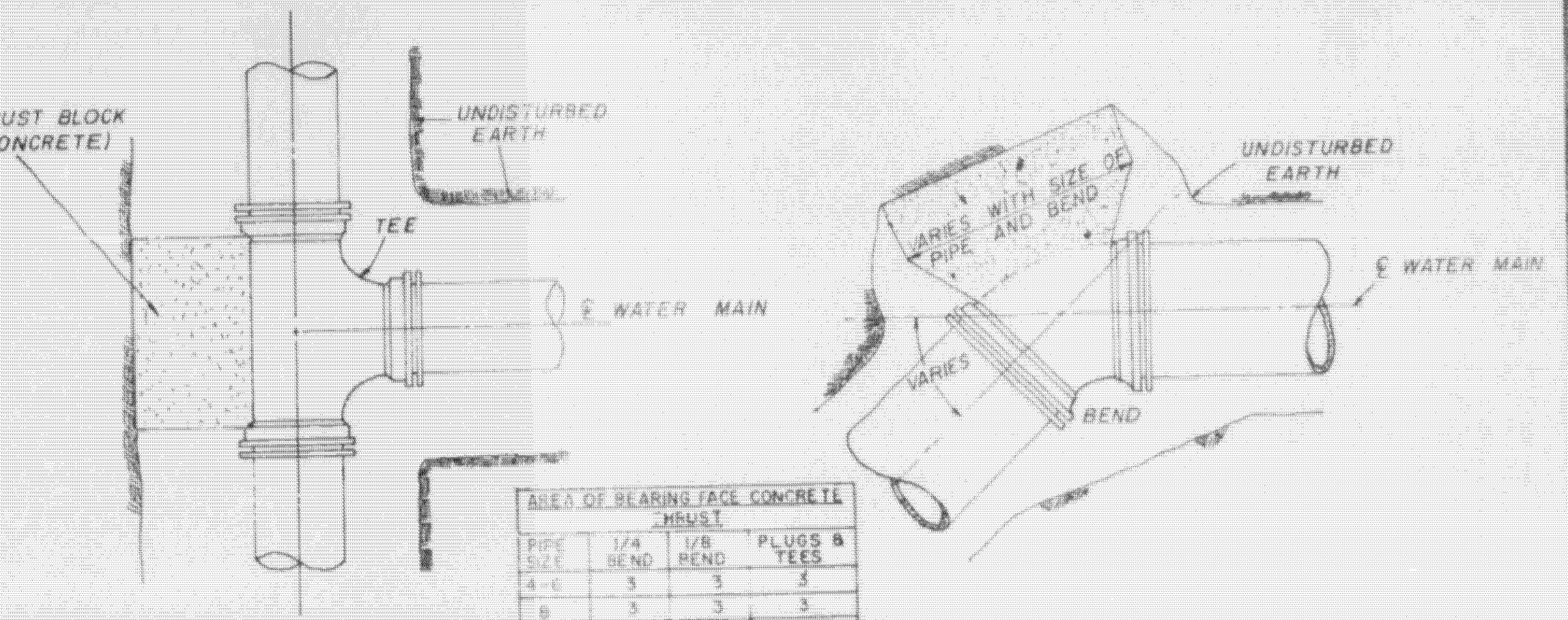


TYPICAL SERVICE ASSEMBLY



ELEVATION SECTION

TYPICAL VALVE & BOX

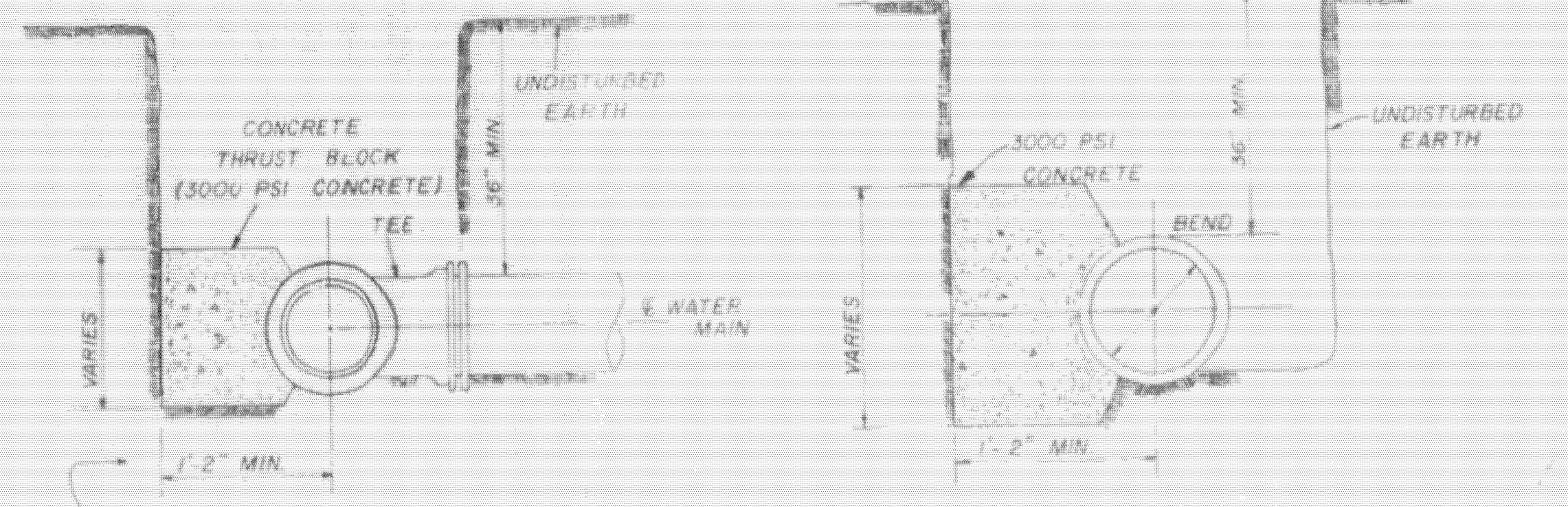


PLAN

PLAN

PIPE SIZE	1/4" BEND	1/2" BEND	PLUGS & TEES
4-6	3	3	3
8	3	3	3
10	4	3	4
12	5	3	4
16	11	4	7

NOTE: AREA OF BEARING FACE IN SQUARE FEET.

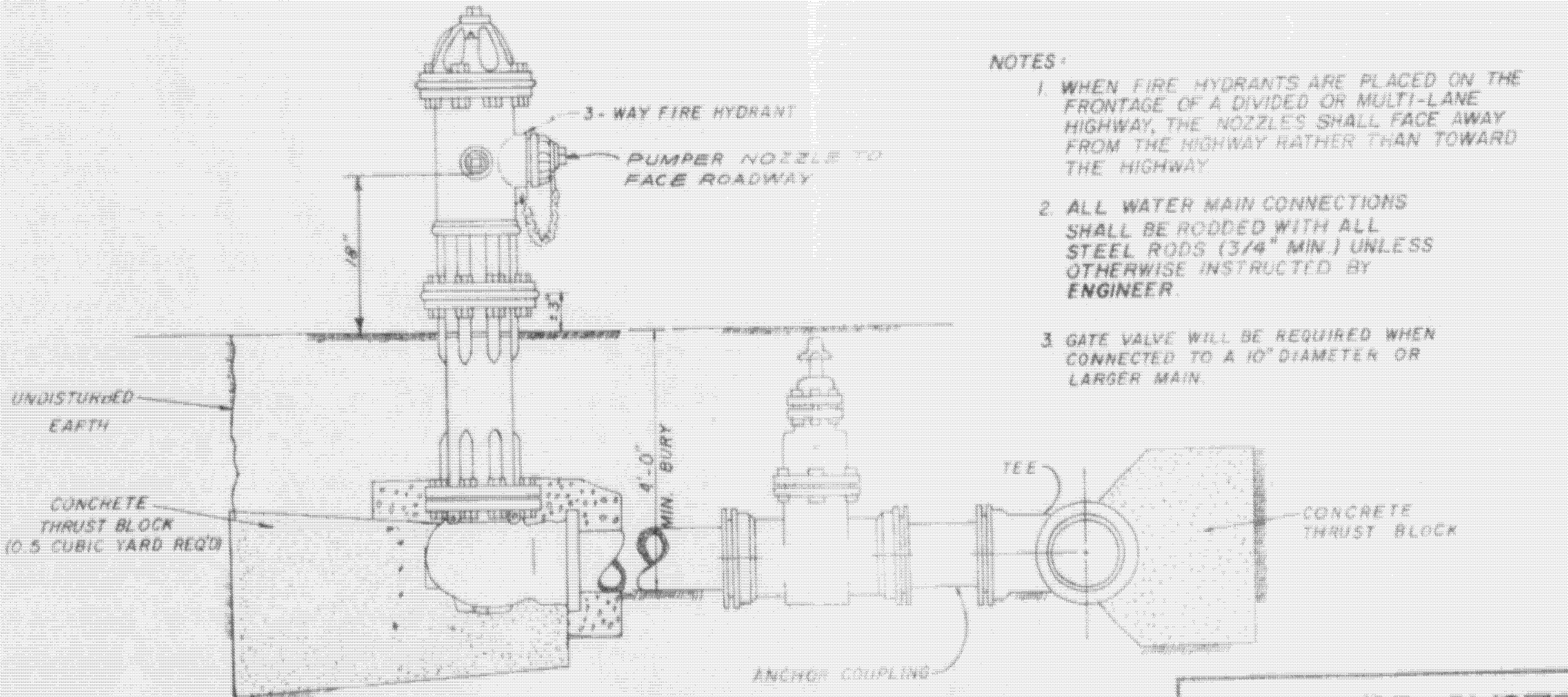
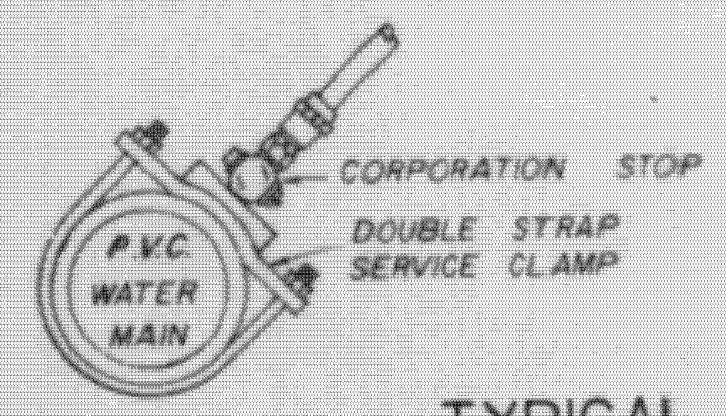


SECTION

SECTION

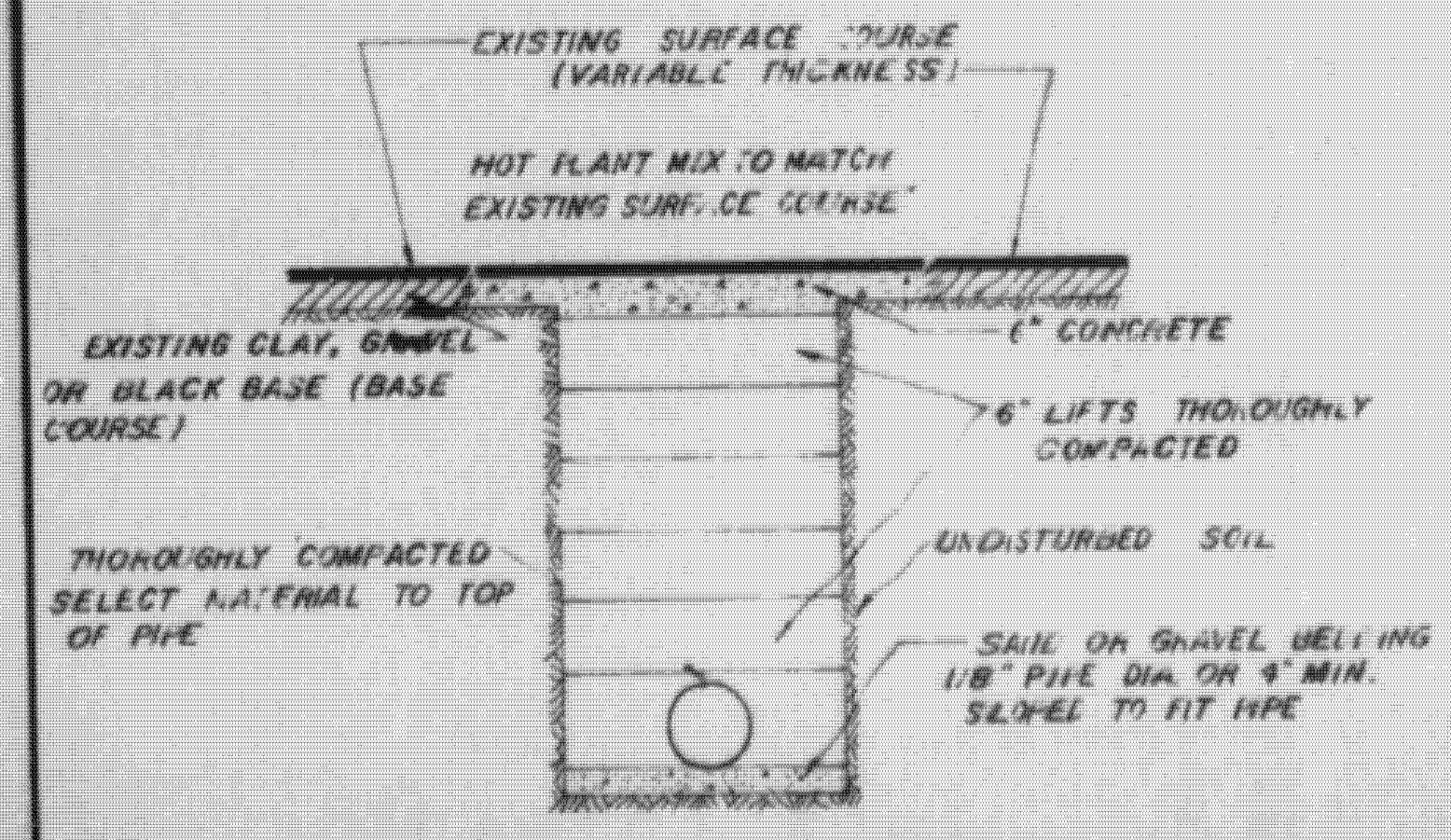
BLOCKING DETAILS FOR TEES & BENDS

NOTE: ALL WATER MAIN CONNECTIONS SHALL BE RODDED WITH ALL STEEL RODS (3/4" MIN.) UNLESS OTHERWISE INSTRUCTED BY ENGINEER.

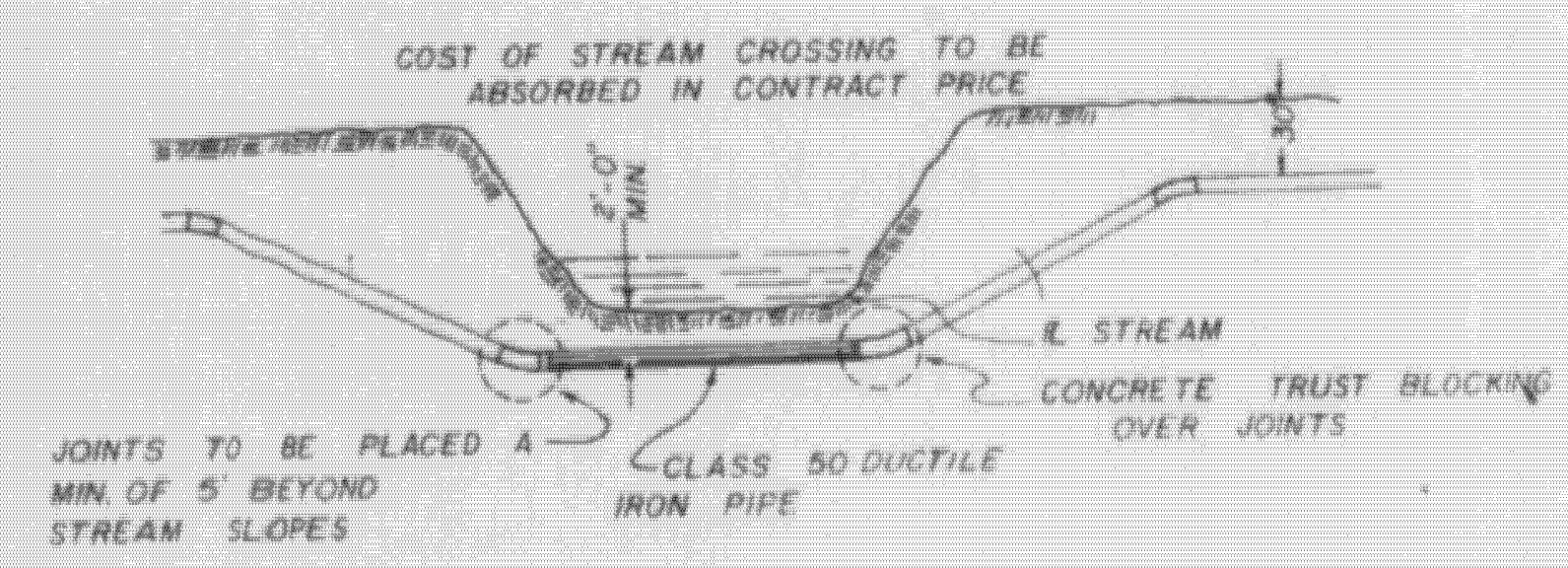


TYPICAL FIRE HYDRANT

- NOTES:
1. WHEN FIRE HYDRANTS ARE PLACED ON THE FRONTAGE OF A DIVIDED OR MULTI-LANE HIGHWAY, THE NOZZLES SHALL FACE AWAY FROM THE HIGHWAY RATHER THAN TOWARD THE HIGHWAY.
 2. ALL WATER MAIN CONNECTIONS SHALL BE RODDED WITH ALL STEEL RODS (3/4" MIN.) UNLESS OTHERWISE INSTRUCTED BY ENGINEER.
 3. GATE VALVE WILL BE REQUIRED WHEN CONNECTED TO A 10" DIAMETER OR LARGER MAIN.



STREET REPAIR OF OPEN CUT



TYPICAL STREAM CROSSING

WATER SYSTEM STANDARD DETAILS

WAGGONER ENGINEERING INC.
Consulting Engineers - Jackson / Brandon, Ms.

DRAWN BY: H.J. DATE: JAN. 19-1990
CHECKED BY: J.A.W. SCALE: N.T.S.

1003 OF