

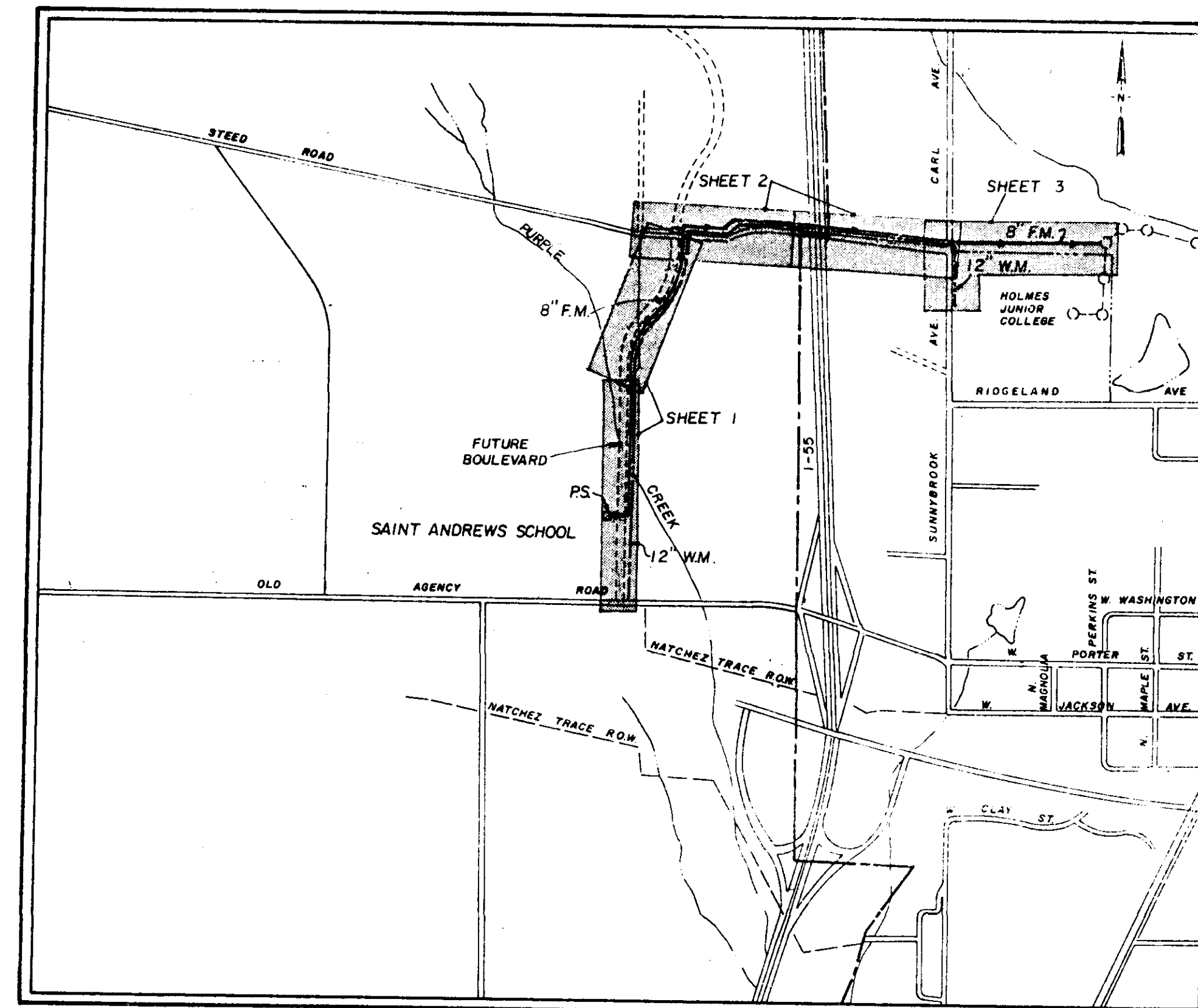
CITY OF RIDGELAND, MISSISSIPPI

ST. ANDREWS / PURPLE CREEK UTILITY IMPROVEMENTS

Mayor:
Hite B. Wolcott

Mayor Pro Tem:
Hilda Boyd

City Attorney:
Milton Case



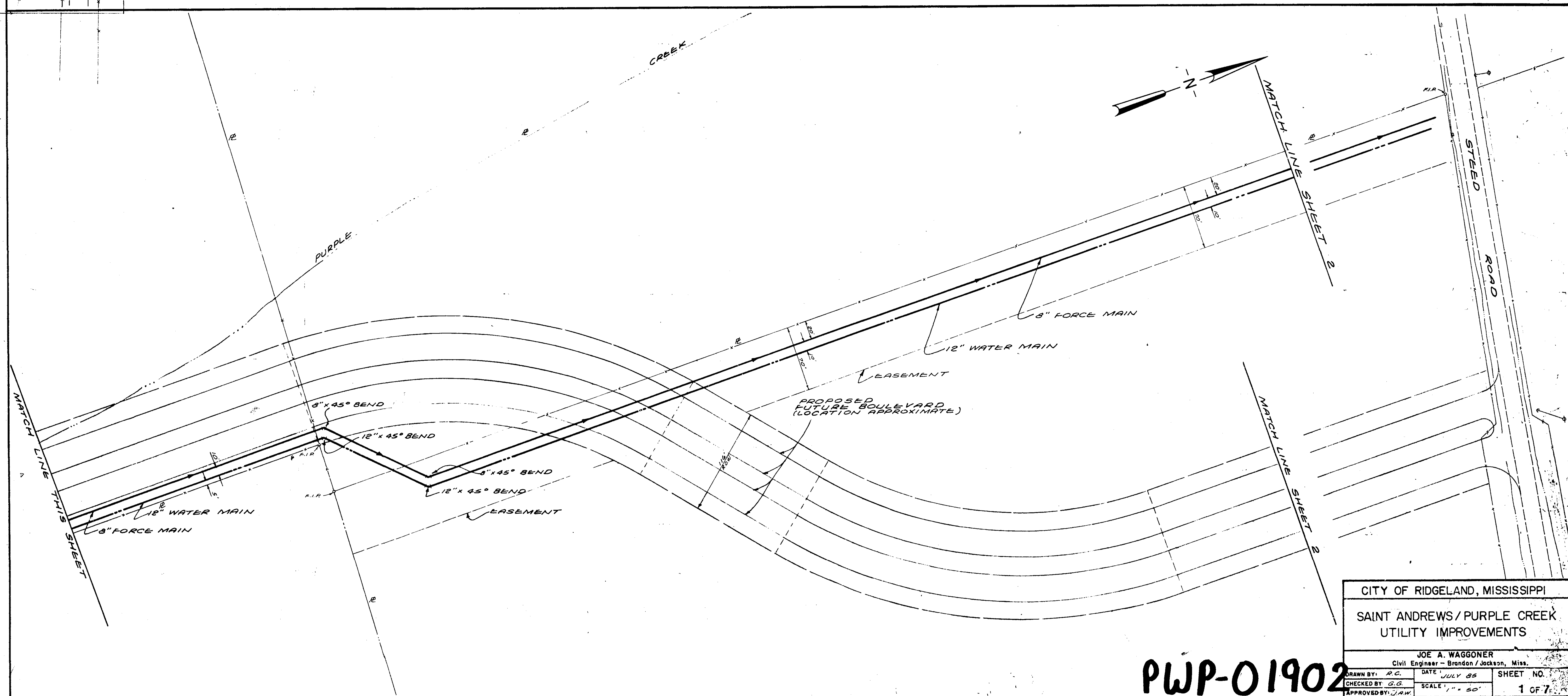
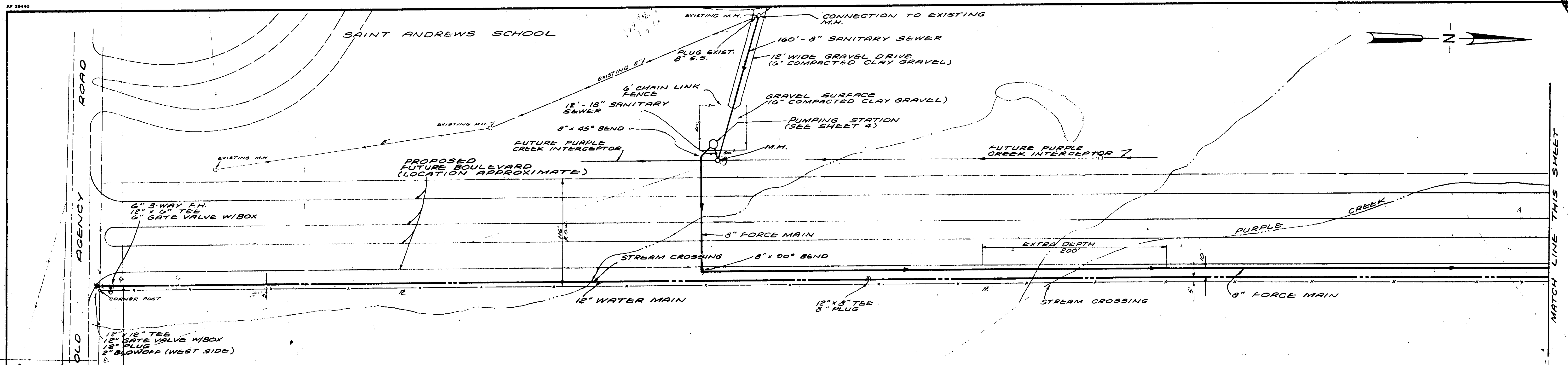
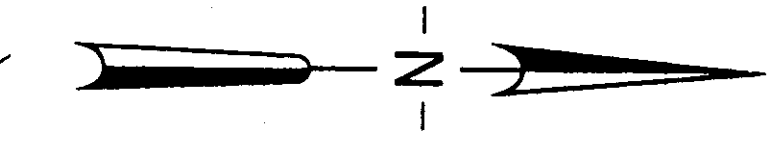
Aldermen:
Al Bible
Hilda Boyd
Harvey Carr, Jr.
Gene McGee
Gilbert Sollek

Public Works Director
Horace M. Ross

JULY , 1985

JOE A. WAGGONER
Civil Engineer
Brandon / Jackson, Mississippi

PWP-01900



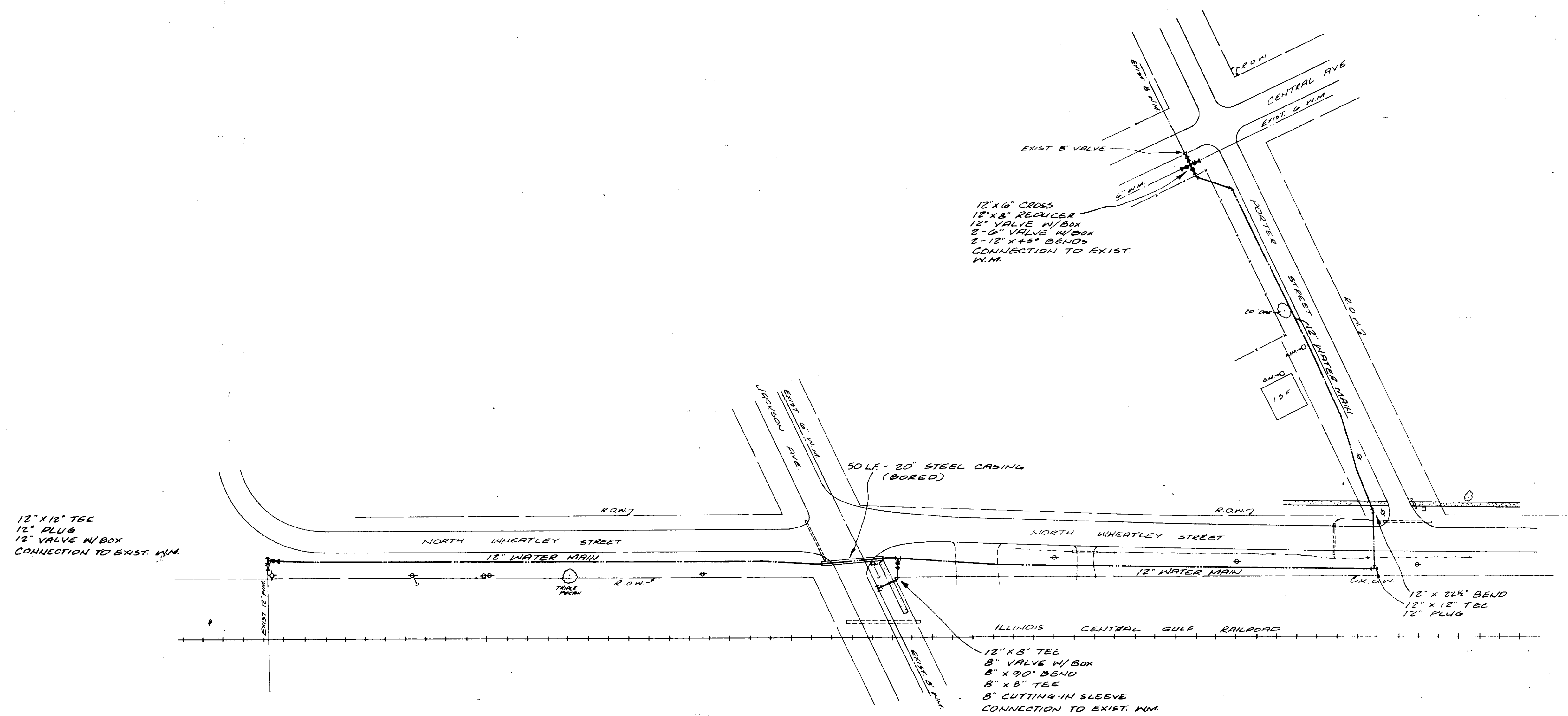
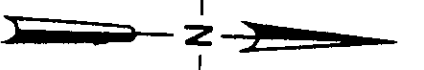
CITY OF RIDGELAND, MISSISSIPPI

SAINT ANDREWS/PURPLE CREEK
UTILITY IMPROVEMENTS

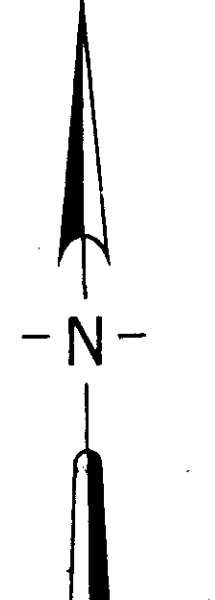
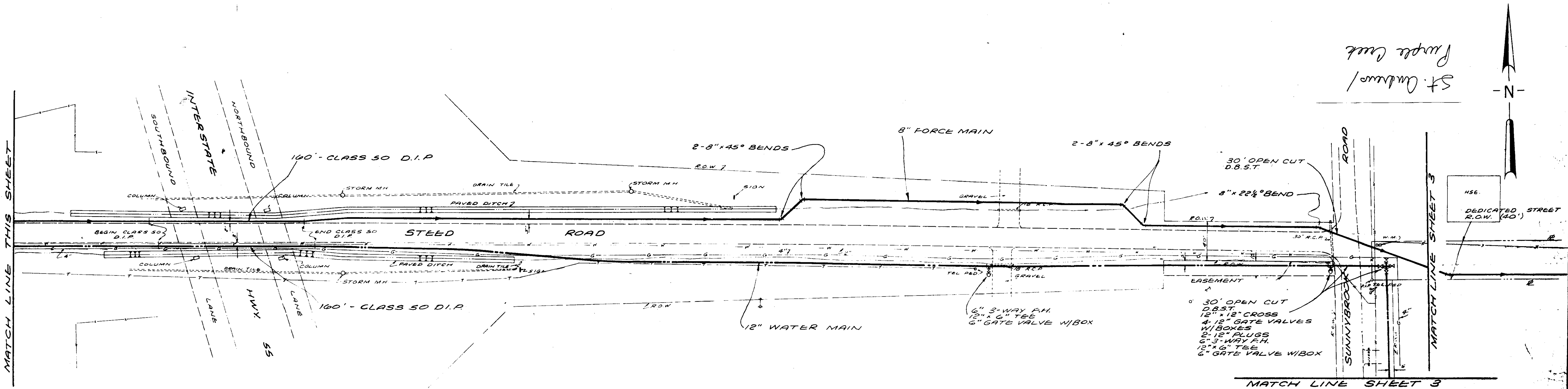
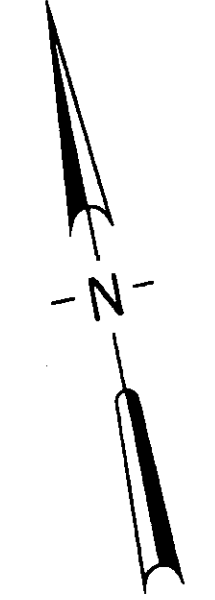
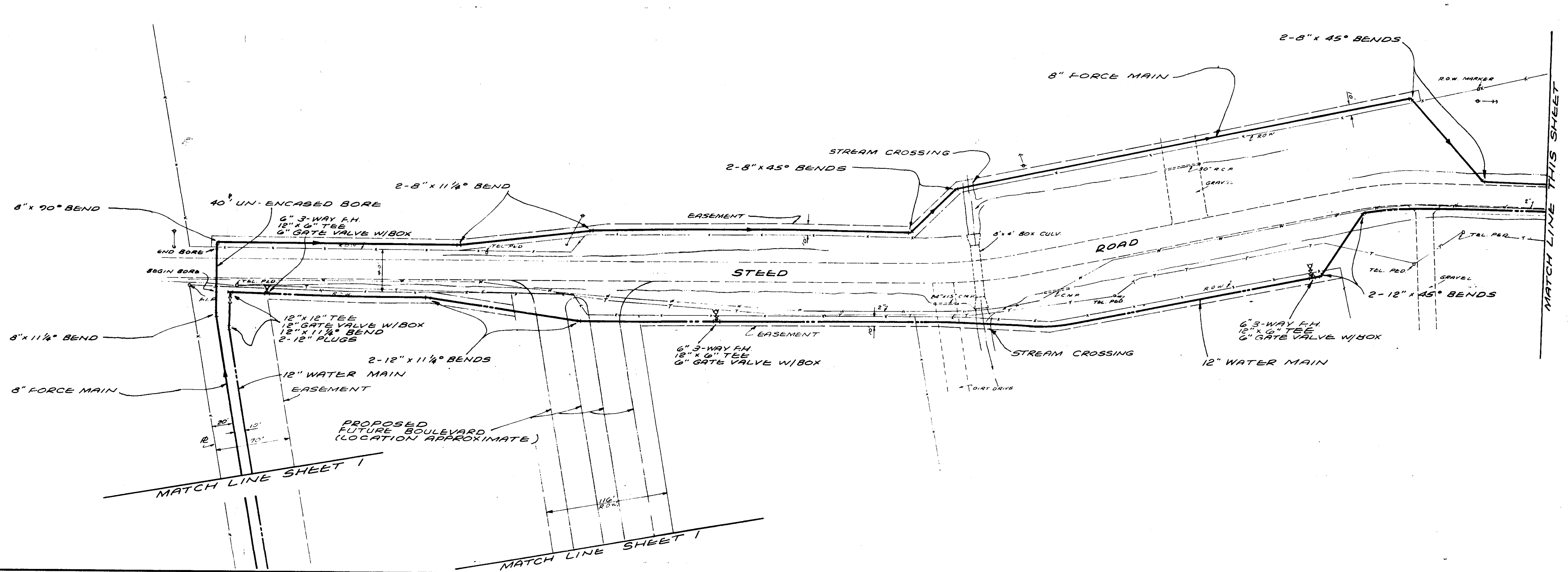
JOE A. WAGGONER
Civil Engineer - Brandon/Jackson, Miss.

DRAWN BY: R.G.	DATE: JULY 85	SHEET NO.
CHECKED BY: G.G.	SCALE: 1" = 50'	1 OF 7
APPROVED BY: J.A.W.		

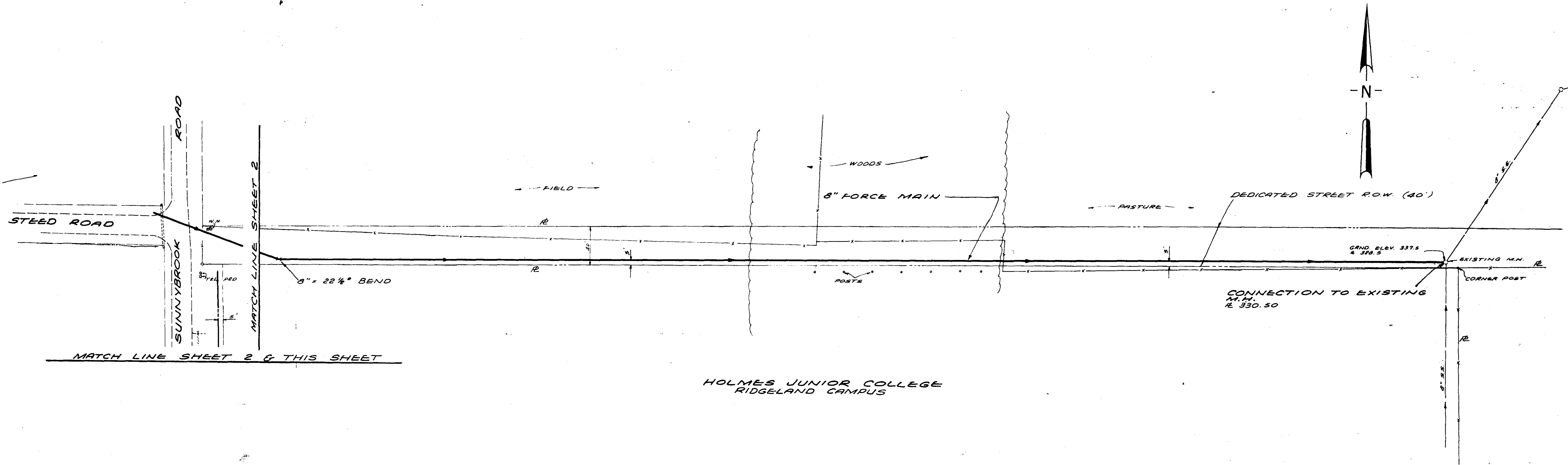
PWP-01902



CITY OF RIDGELAND, MISSISSIPPI		
SAINT ANDREWS / PURPLE CREEK UTILITY IMPROVEMENTS		
JOE A. WAGGONER Civil Engineer - Brandon / Jackson, Miss.		
DRAWN BY: H.A.L.	DATE: 9-17-85	SHEET NO.
CHECKED BY: G.G.	SCALE: 1" = 50'	1A OF 7
APPROVED BY:		



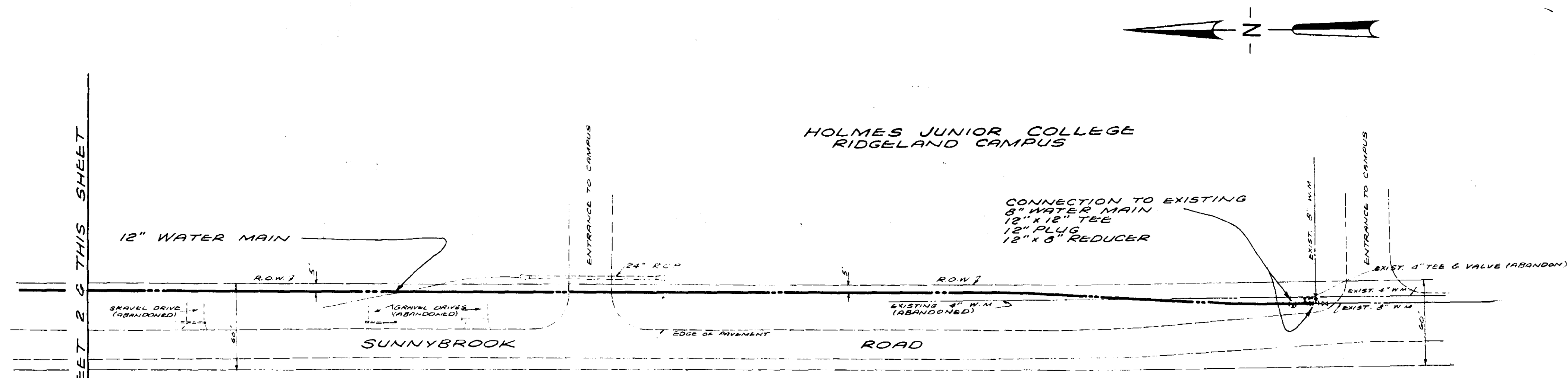
CITY OF RIDGELAND, MISSISSIPPI			
SAINT ANDREWS / PURPLE CREEK UTILITY IMPROVEMENTS			
JOE A. WAGGONER Civil Engineer - Brandon / Jackson, Miss.			
DRAWN BY: R.C.	DATE: JULY 85	SHEET NO.	
CHECKED BY: G.B.	SCALE: 1" = 50'	2 OF 2	
APPROVED BY: J.A.W.			



HOLMES JUNIOR COLLEGE
RIDGELAND CAMPUS

GENERAL NOTES

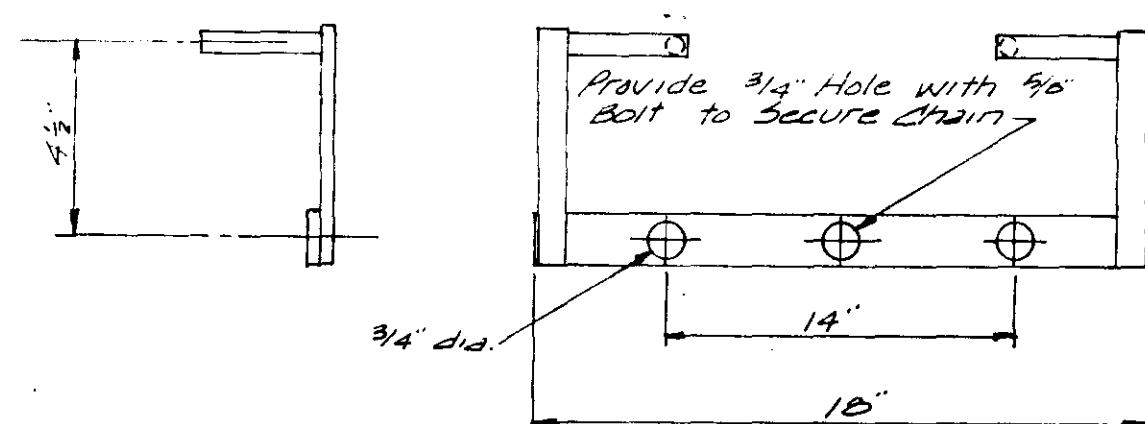
1. The existing utility locations shown on plans are approximate only. The Contractor shall coordinate the location of all existing utilities (power, telephone, gas, water, sewer, etc) with the appropriate utility company prior to bidding and before construction begins.
2. Any utility line or service line encountered during construction, whether shown on plans or not, shall be protected by the Contractor at no additional cost to the City.
3. The Contractor shall be responsible for verifying horizontal and vertical clearances on all utility crossings before installation.
4. The Contractor shall fertilize and seed all areas where the existing vegetation was removed or disturbed during construction and not required to be sodded by the Engineer. The fertilizer shall be applied and seeding shall be completed in accordance with these specifications.
5. Unsuitable bedding or backfill material which may be encountered shall be excavated to the limits directed by the Engineer and backfilled with approved material.
6. The Contractor shall maintain traffic to the businesses fronting along the project for the duration of the work.
7. All proposed water mains and force mains shall have minimum 36" cover.
8. The Contractor shall be responsible for completing all sampling and testing of materials, and for submission of same to Engineer for approval prior to their use. This shall include select bedding or backfill, concrete, asphalt, aggregates and other items as specified by the Engineer. This prior use testing shall be an absorbed item.
9. Routing of proposed mains shown on these plans is approximate only. Owner to stake route to be constructed.
10. All valves to be installed with boxes and concrete pads and marker pipes.
11. Mains installed "extra depth" to be installed with 5' minimum cover.
12. Location of vacuum relief valves to be determined by Engineer.



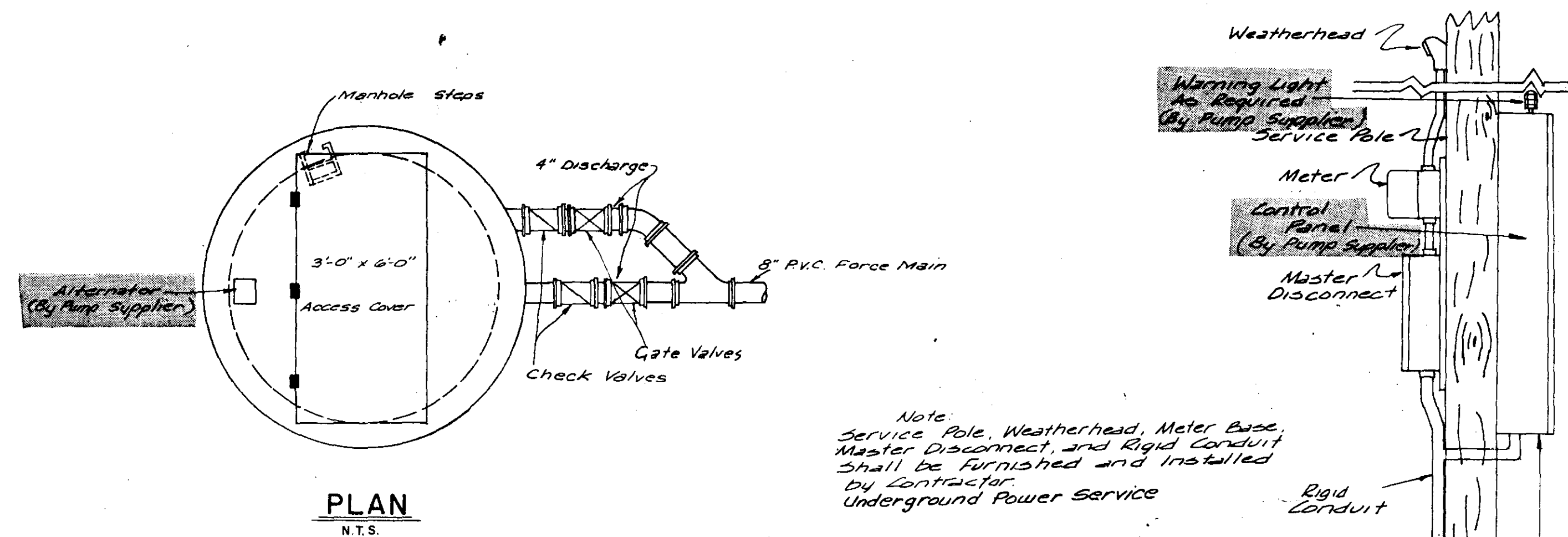
HOLMES JUNIOR COLLEGE
RIDGELAND CAMPUS

MATCH LINE SHEET 2 & THIS SHEET

CITY OF RIDGELAND, MISSISSIPPI		
SAINT ANDREWS / PURPLE CREEK UTILITY IMPROVEMENTS		
JOE A. WAGGONER Civil Engineer - Brandon / Jackson, Miss.		
DRAWN BY: R.C.	DATE: JULY 85	SHEET NO.
CHECKED BY: G.S.	SCALE: 1" = 50'	3 OF 7
APPROVED BY: JAW		

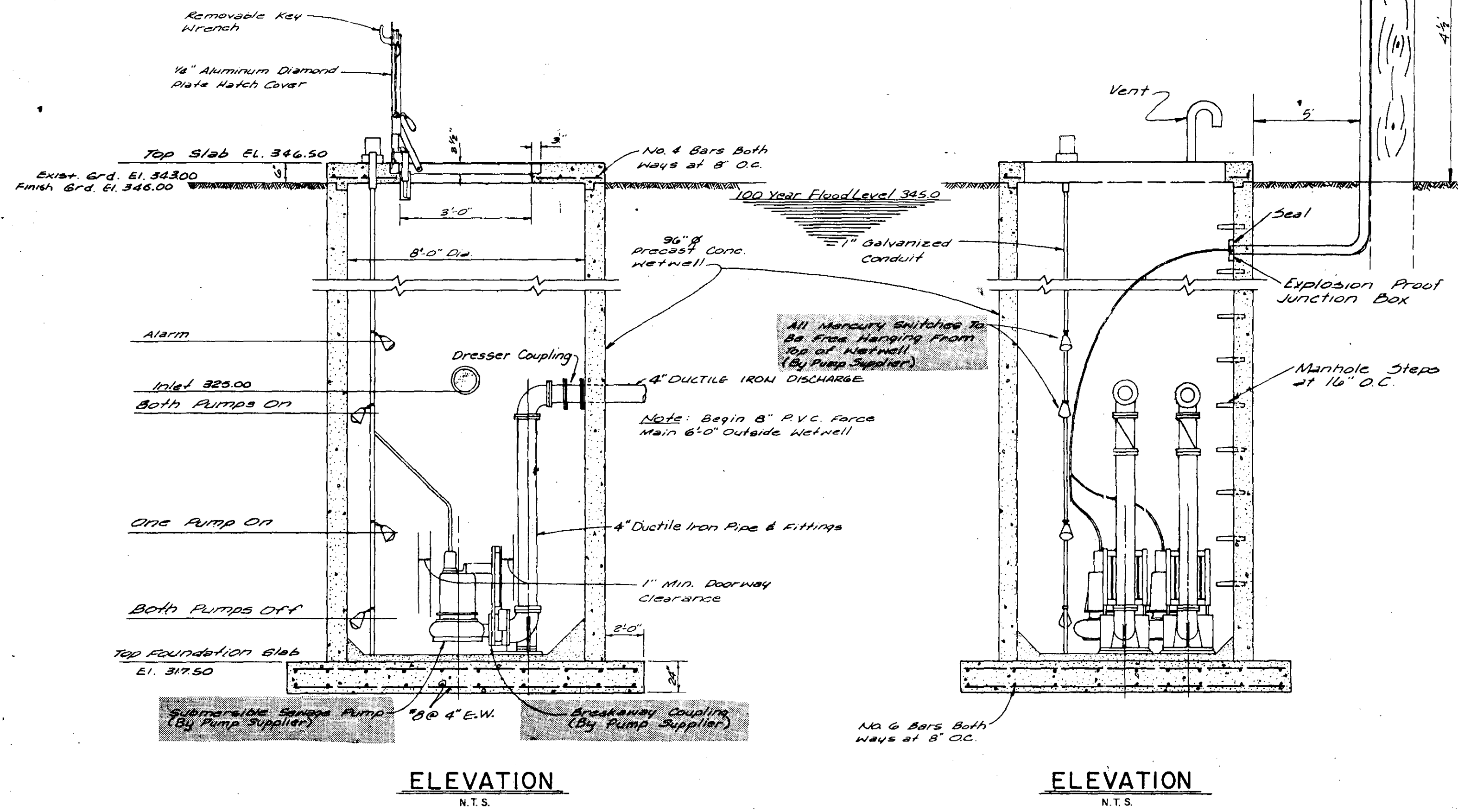


DETAIL "A"
N.T.S.



PLAN
N.T.S.

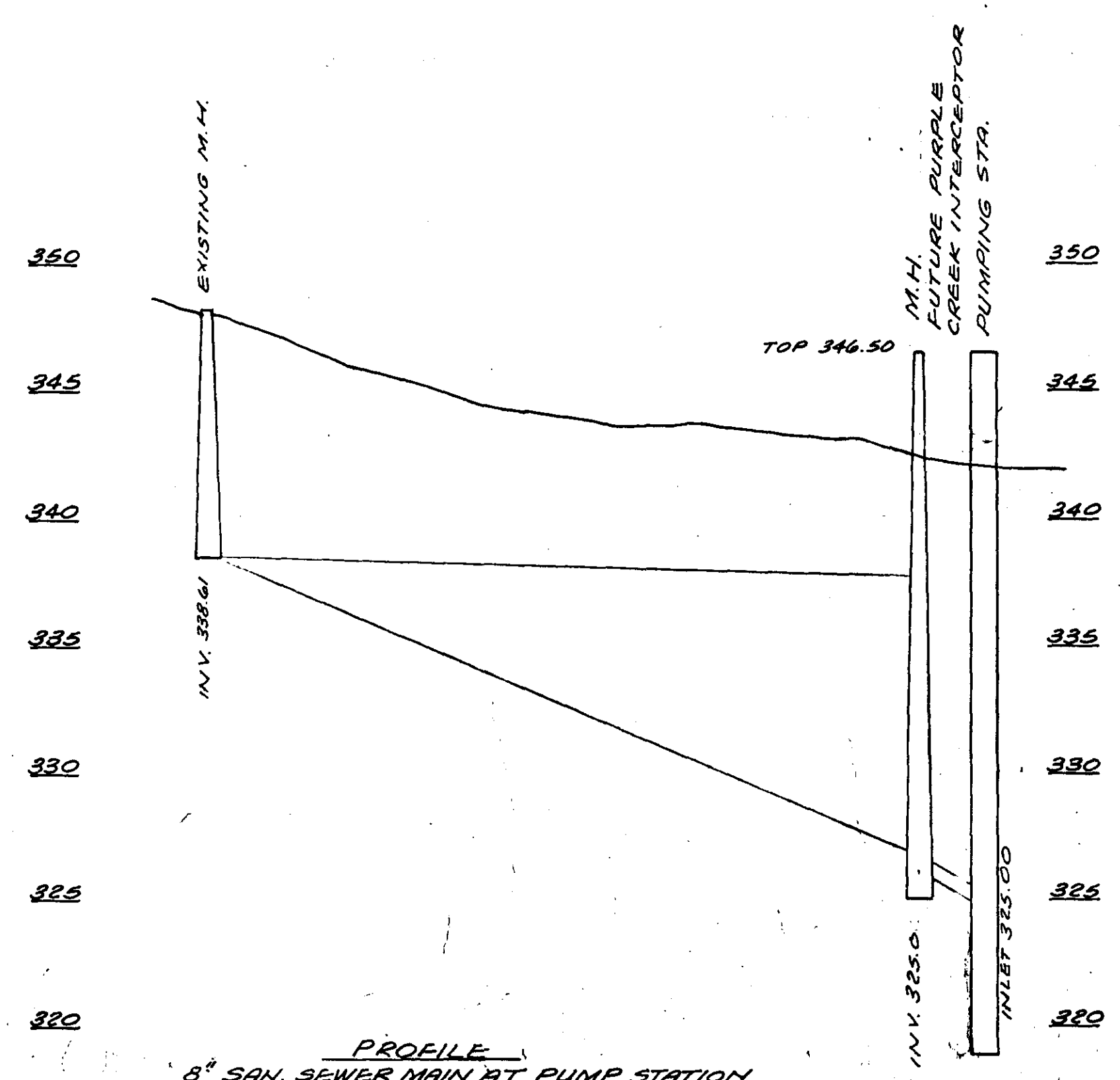
Note:
Service Pole, Weatherhead, Meter Base,
Master Disconnect, and Rigid Conduit
shall be furnished and installed
by Contractor
Underground Power Service



ELEVATION
N.T.S.

ELEVATION
N.T.S.

Top Foundation Slab	Both Pumps Off	One Pump On	Both Pumps On	Alarm	Top Slab	Inlet
317.50	320.50	324.50	325.00	326.00	343.00	325.00



PROFILE
6" SAN. SEWER MAIN AT PUMP STATION

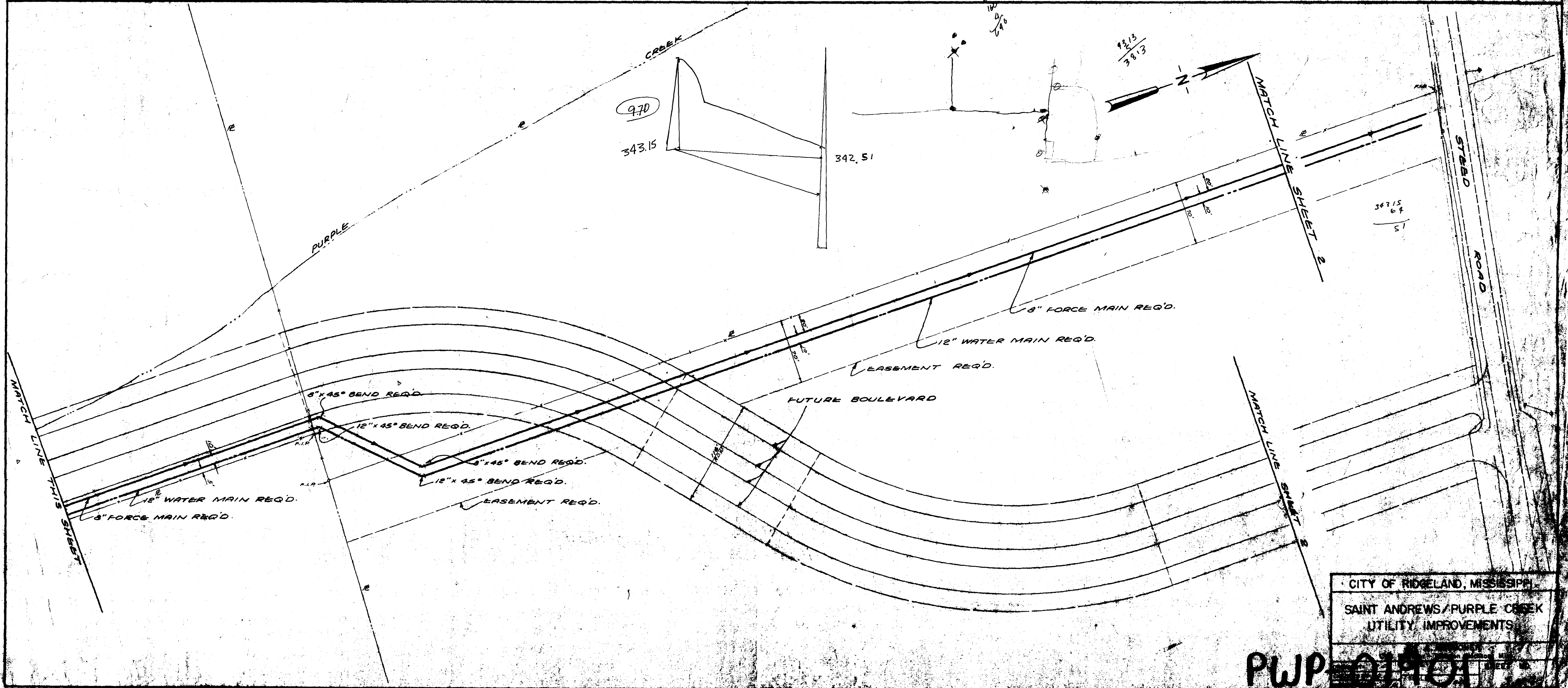
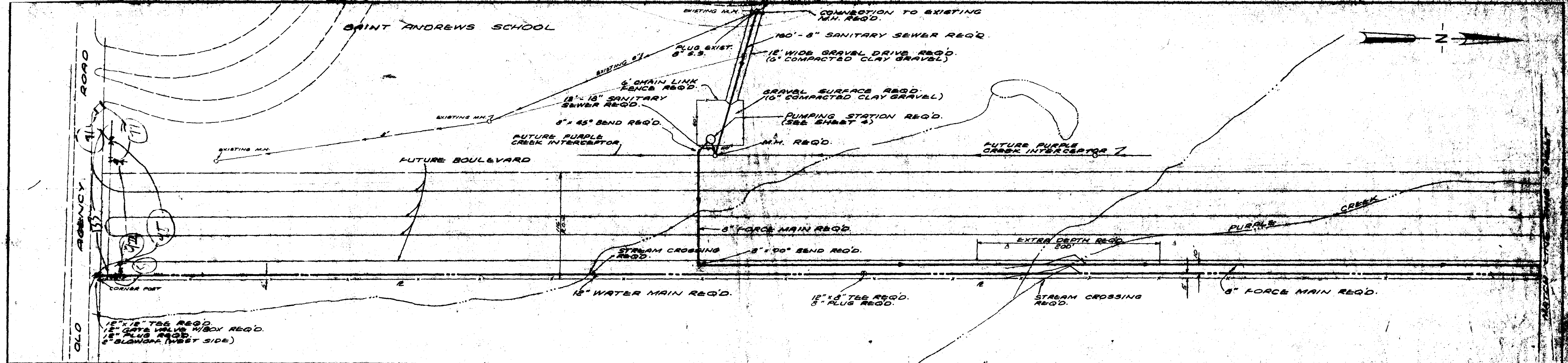
DETAILS - WASTEWATER PUMPING STATION

SAINT ANDREWS / PURPLE CREEK
UTILITY IMPROVEMENTS

JOE A. WAGGONER
Civil Engineer

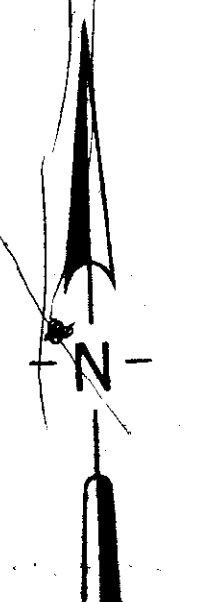
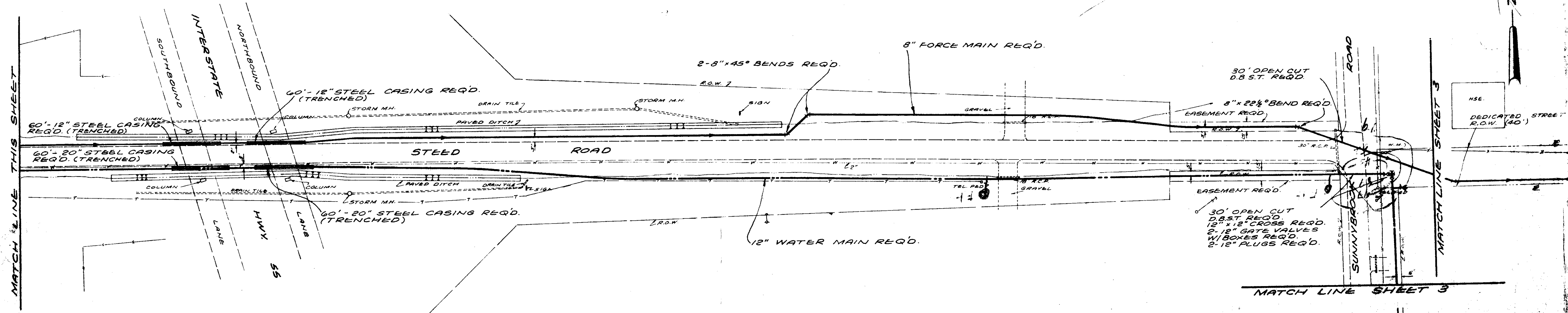
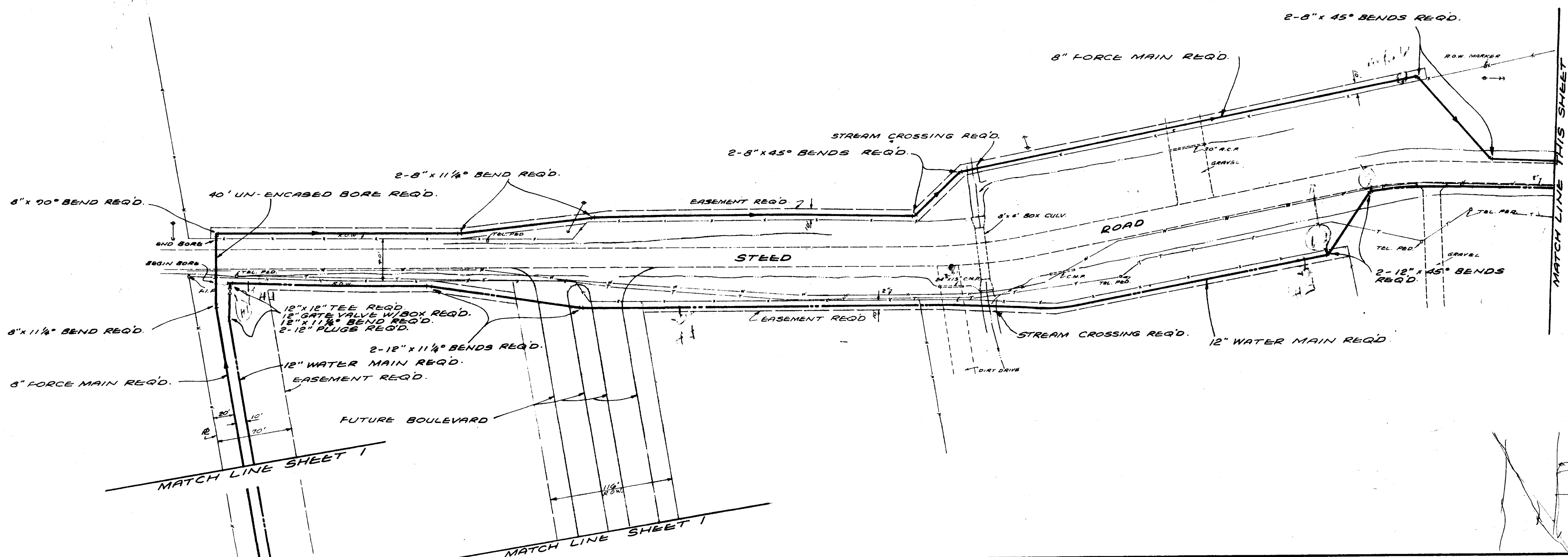
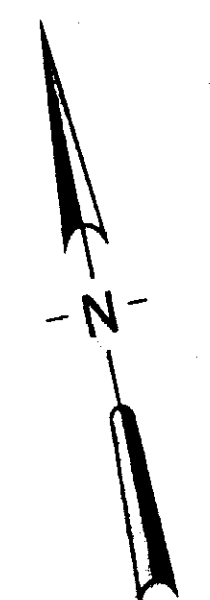
DRAWN BY: [] DATE: [] SHEET: []

CHECKED BY: [] SCALE: AS SHOWN

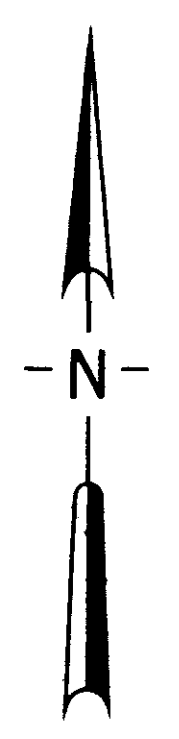
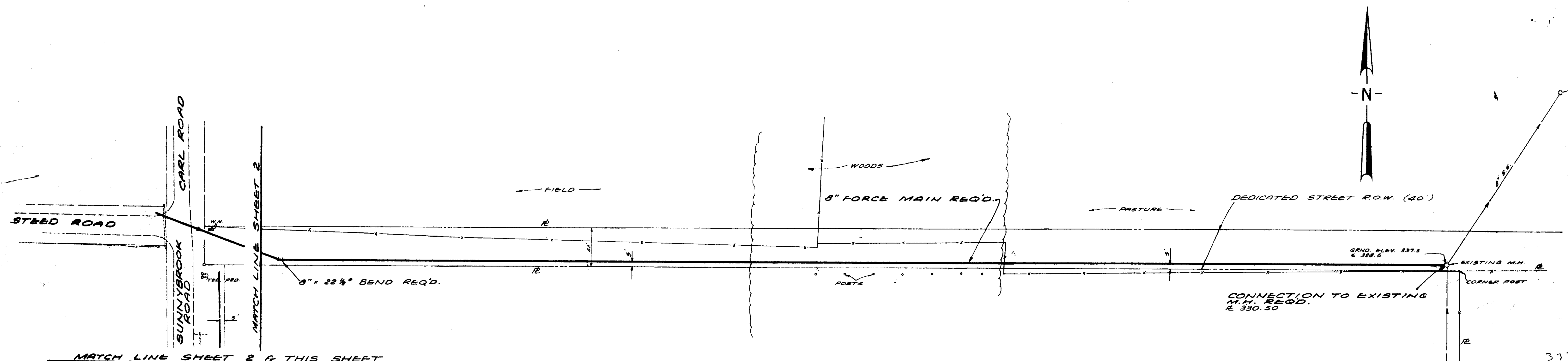


CITY OF RIDELAND, MISSISSIPPI
 SAINT ANDREWS/PURPLE CREEK
 UTILITY IMPROVEMENTS

PWP 011011



CITY OF RIDGELAND, MISSISSIPPI			
SAINT ANDREWS / PURPLE CREEK UTILITY IMPROVEMENTS			
JOB A. WAGGONER Civil Engineer - Brandon / Jackson, Miss.			
DESIGNED BY: J.C.	DATE: 10/11/05	SHEET NO.	
CHECKED BY: G.D.	SCALE: 1" = 40'	2 OF 7	
APPROVED BY: J.W.			



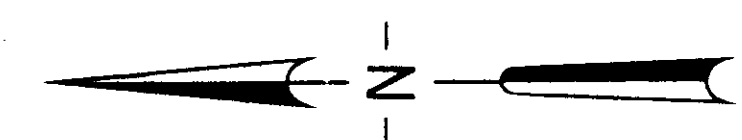
377.5
328.5
49.0

HOLMES JUNIOR COLLEGE
RIDGELAND CAMPUS

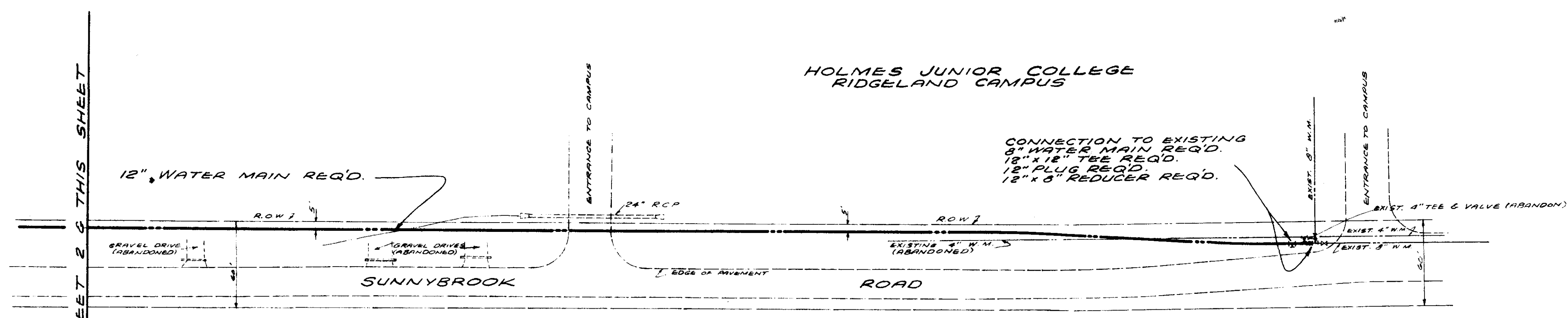
MATCH LINE SHEET 2 & THIS SHEET

GENERAL NOTES

1. The existing utility locations shown on plans are approximate only. The Contractor shall coordinate the location of all existing utilities (power, telephone, gas, water, sewer, etc) with the appropriate utility company prior to bidding and before construction begins.
2. Any utility line or service line encountered during construction, whether shown on plans or not, shall be protected by the Contractor at no additional cost to the City.
3. The Contractor shall be responsible for verifying horizontal and vertical clearances on all utility crossings before installation.
4. The Contractor shall fertilize and seed all areas where the existing vegetation was removed or disturbed during construction and not required to be solid sodded by the Engineer. The fertilizer shall be applied and seeding shall be completed in accordance with these specifications.
5. Unsuitable bedding or backfill material which may be encountered shall be excavated to the limits directed by the Engineer and backfilled with approved material.
6. The Contractor shall maintain traffic to the businesses fronting along the project for the duration of the work.
7. All proposed water mains and force mains shall have minimum 36" cover.
8. The Contractor shall be responsible for completing all sampling and testing of materials, and for submission of same to Engineer for approval prior to their use. This shall include select bedding or backfill, concrete, asphalt, aggregates and other items as specified by the Engineer. This prior use testing shall be an absorbed item.
9. Routing of proposed mains shown on these plans is approximate only. Owner to stake route to be constructed.
10. All valves to be installed with boxes and concrete pads and marker pipes.
11. Mains installed "extra depth" to be installed with 5' minimum cover.
12. Location of vacuum relief valves to be determined by Engineer.

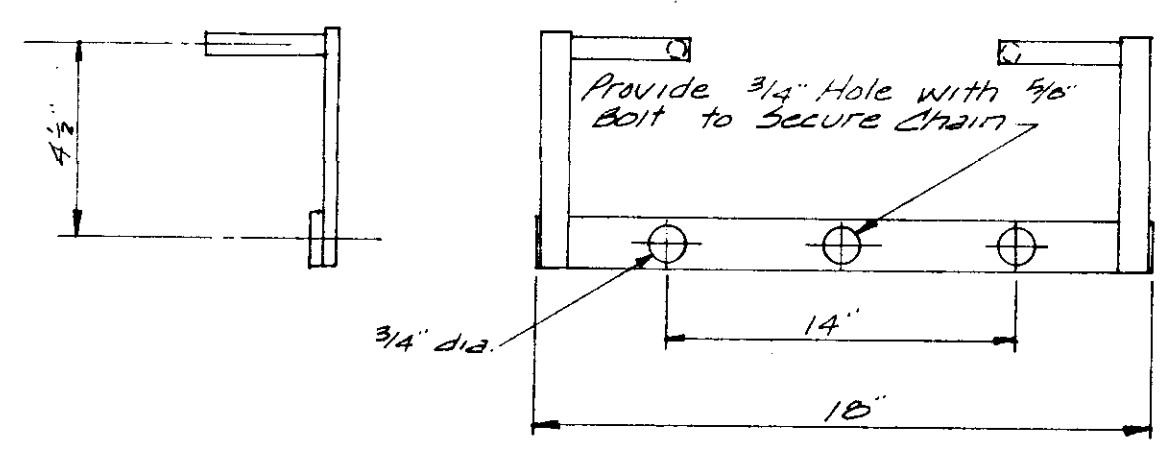


HOLMES JUNIOR COLLEGE
RIDGELAND CAMPUS

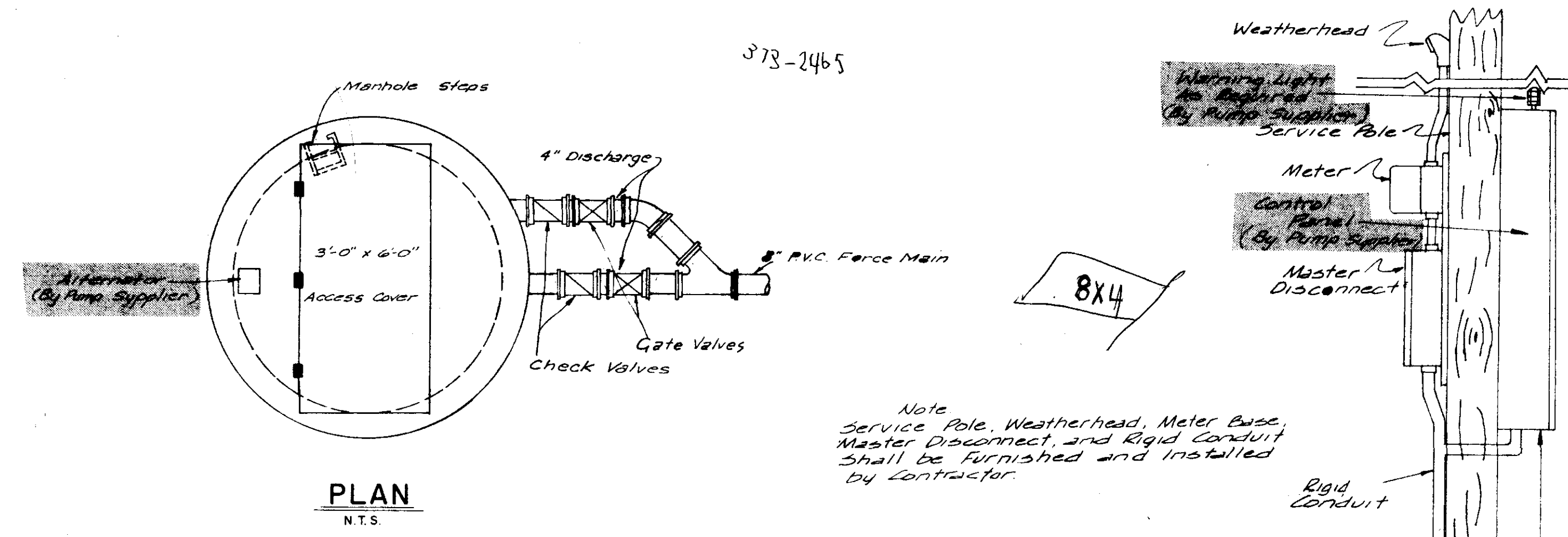


MATCH LINE SHEET 2 & THIS SHEET

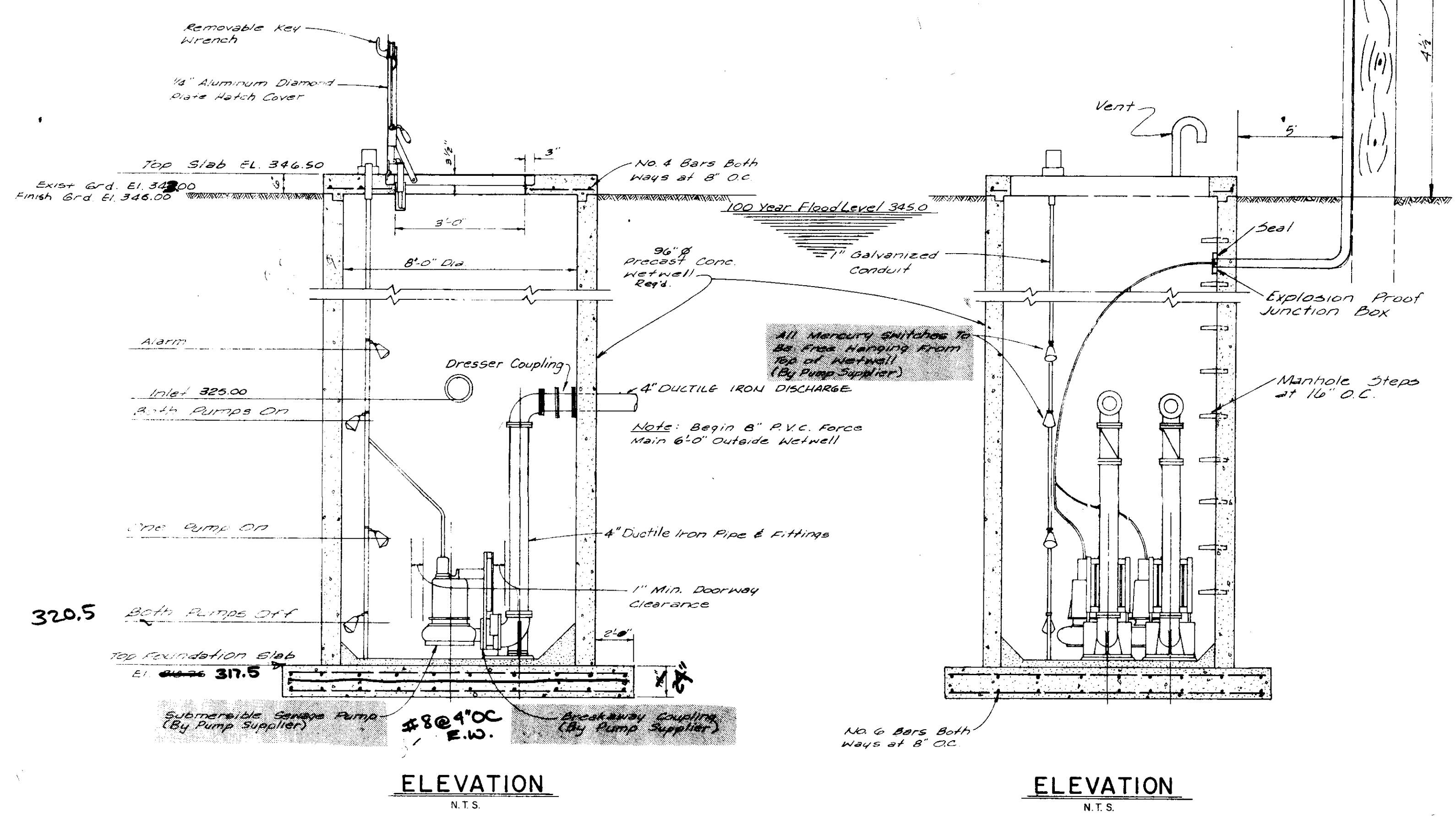
CITY OF RIDGELAND, MISSISSIPPI		
SAINT ANDREWS / PURPLE CREEK UTILITY IMPROVEMENTS		
JOE A. WAGGONER Civil Engineer - Brandon/Jackson, Miss.		
DRAWN BY: RC	DATE: JULY 85	SHEET NO.
CHECKED BY: GG	SCALE: 1" = 50'	3 OF 7
APPROVED BY: JAW		



DETAIL "A"
N.T.S.



PLAN
N.T.S.



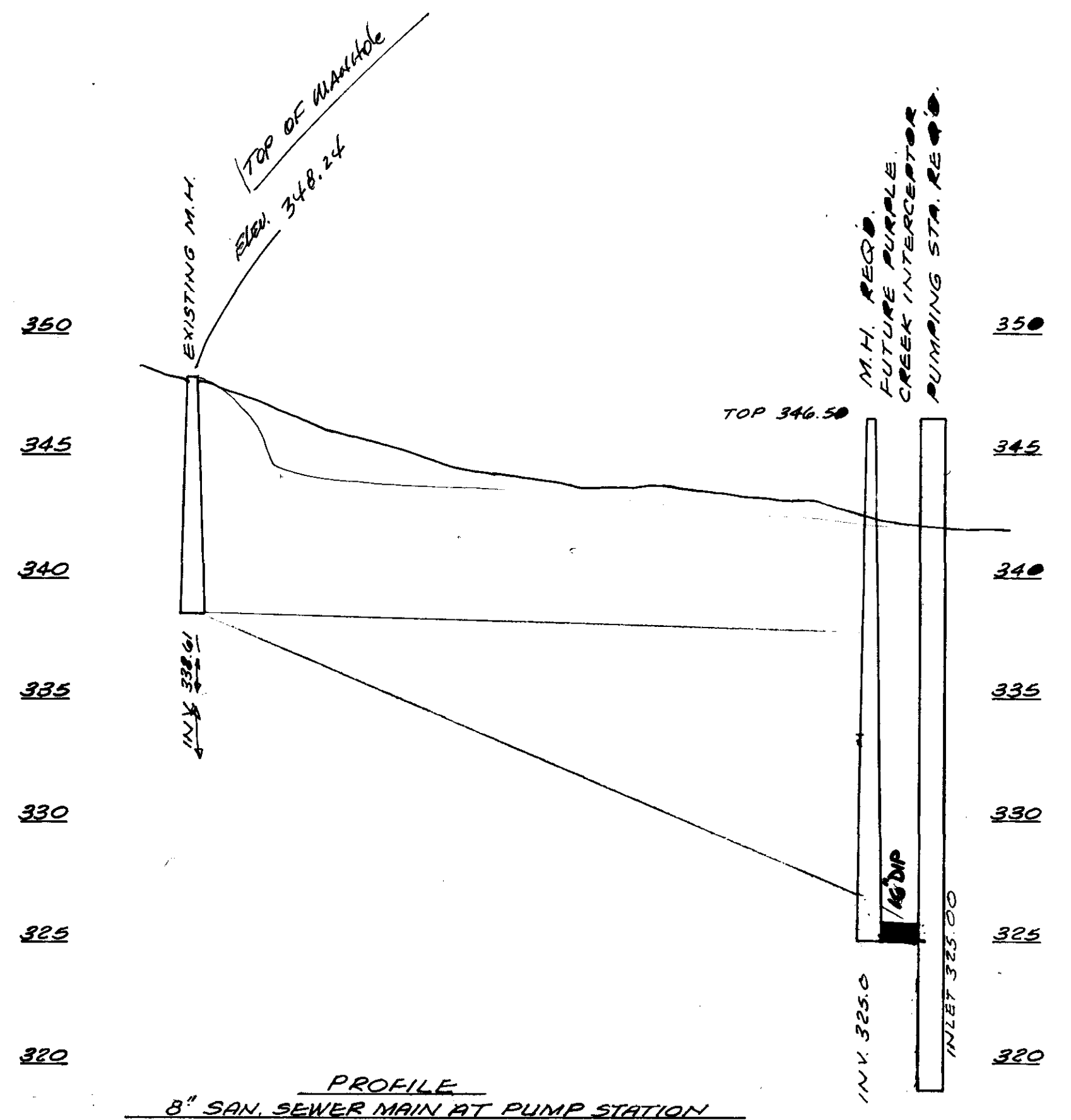
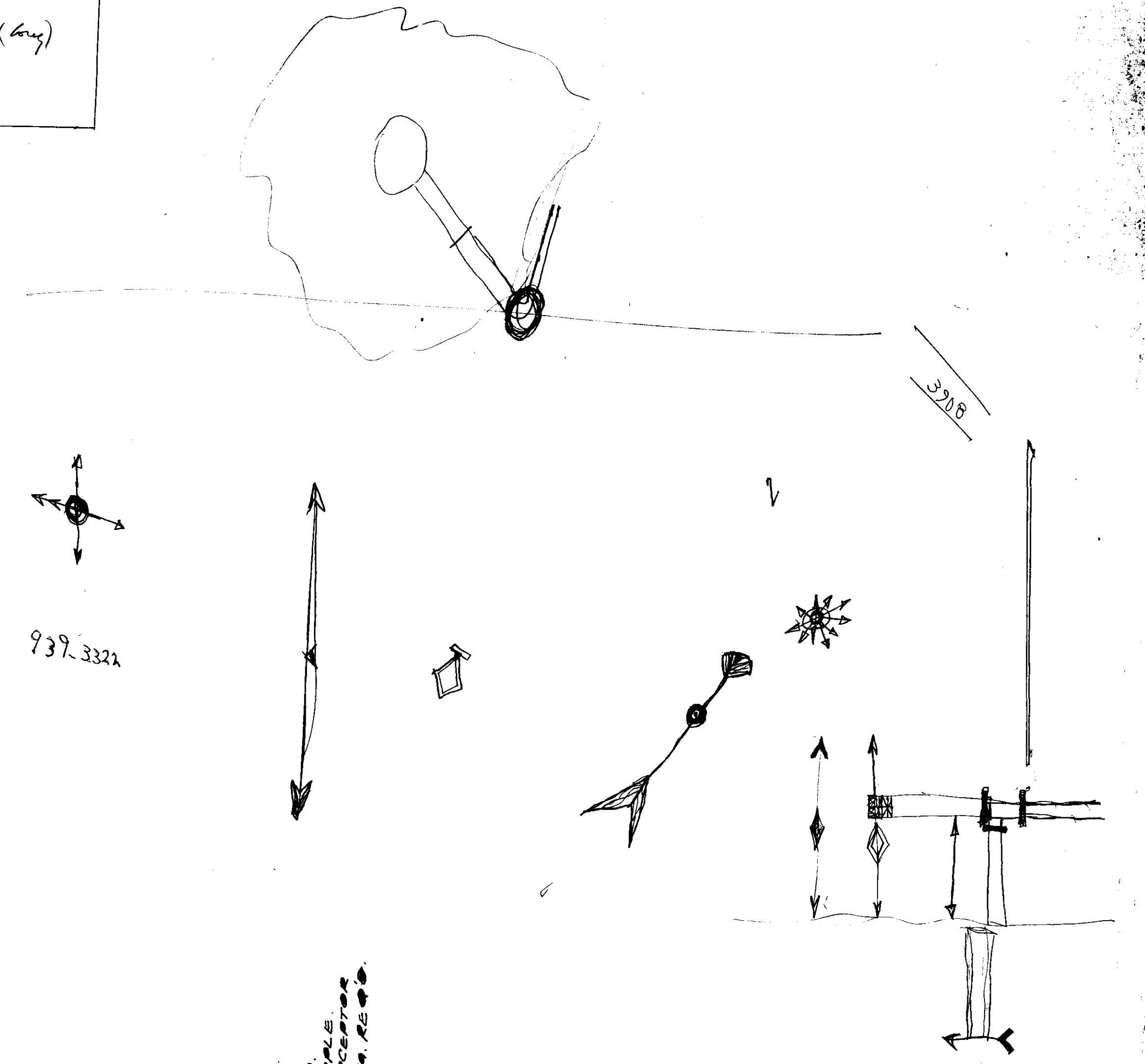
ELEVATION
N.T.S.

ELEVATION
N.T.S.

260 per slab
1" slab

Top Foundation Slab	Both Pumps Off	One Pump On	Both Pumps On	Alarm	Top Slab	Inlet
317.5	320.0	320.0	320.0	320.0	320.0	325.0

- 4 - 4" ductile
- 2 - 4" 90° flanged
- 2 - 4" checks
- 2 - 4" gates
- 2 - 4" pipe (long)



PROFILE
8" SAN. SEWER MAIN AT PUMP STATION

DETAILS - WASTEWATER PUMPING STATION
SAINT ANDREWS / PURPLE CREEK
UTILITY IMPROVEMENTS
JOE A. WARDEN
CIVIL ENGINEER