

CITY OF RIDGELAND MADISON COUNTY, MISSISSIPPI SUNNYBROOK ROAD SANITARY SEWER EXTENSION

WAGGONER
Engineering, Inc.
Engineers, Scientists, Planners
143 LeFleurs Square
JACKSON, MS 39211
601-355-9526
FAX 601-352-3945

CITY OFFICIALS:

MAYOR

GENE F. McGEE

BOARD OF ALDERMEN

- KEN HEARD, WARD 1
- CHUCK GAUTIER, WARD 2
- MIKE CROOK, WARD 3
- LARRY ROBERTS, WARD 4
- SCOTT JONES, WARD 5
- LINDA DAVIS TRUNZLER, WARD 6
- GERALD STEEN, AT-LARGE

CITY ATTORNEY

JERRY MILLS

DIRECTOR OF PUBLIC WORKS

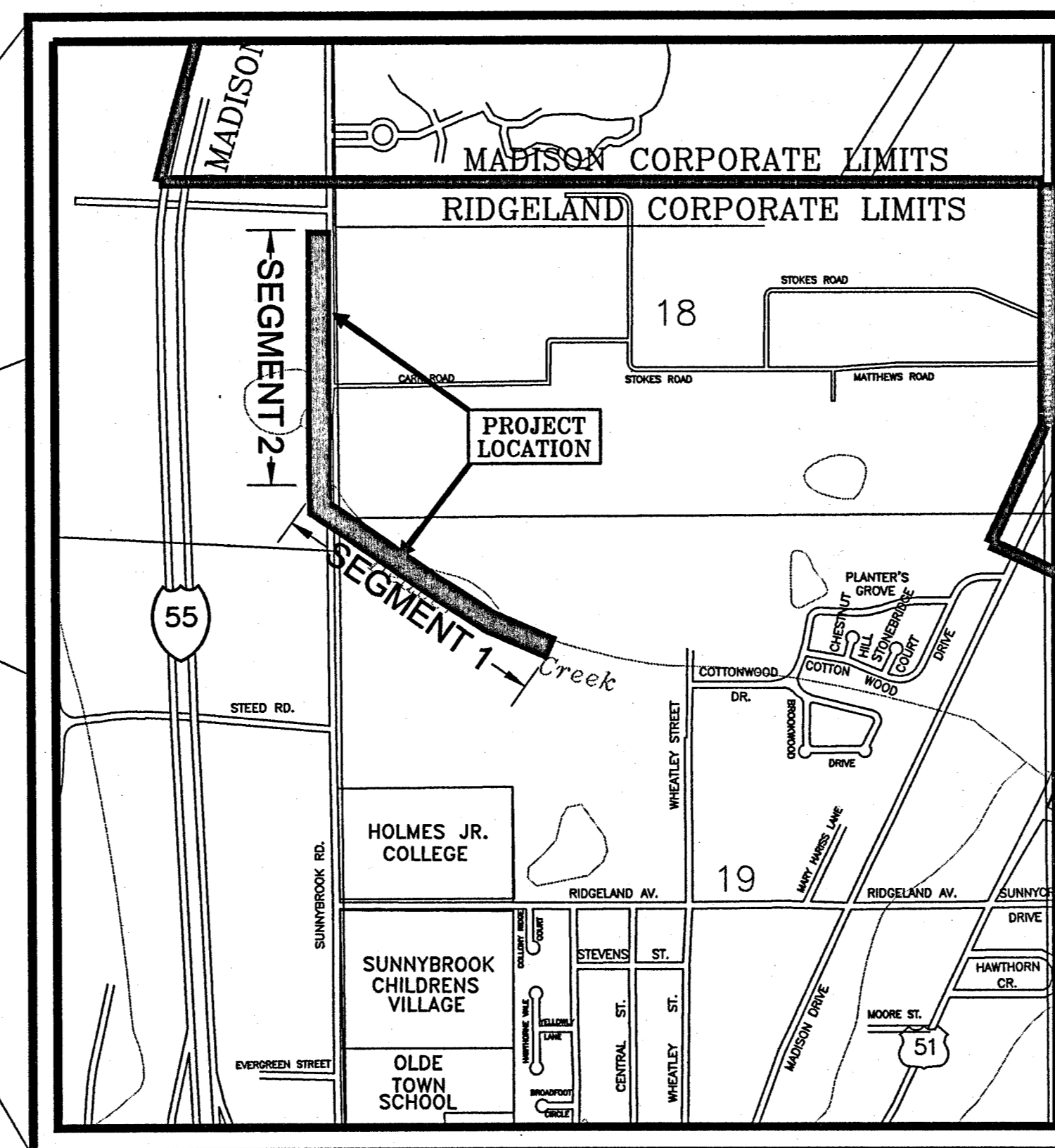
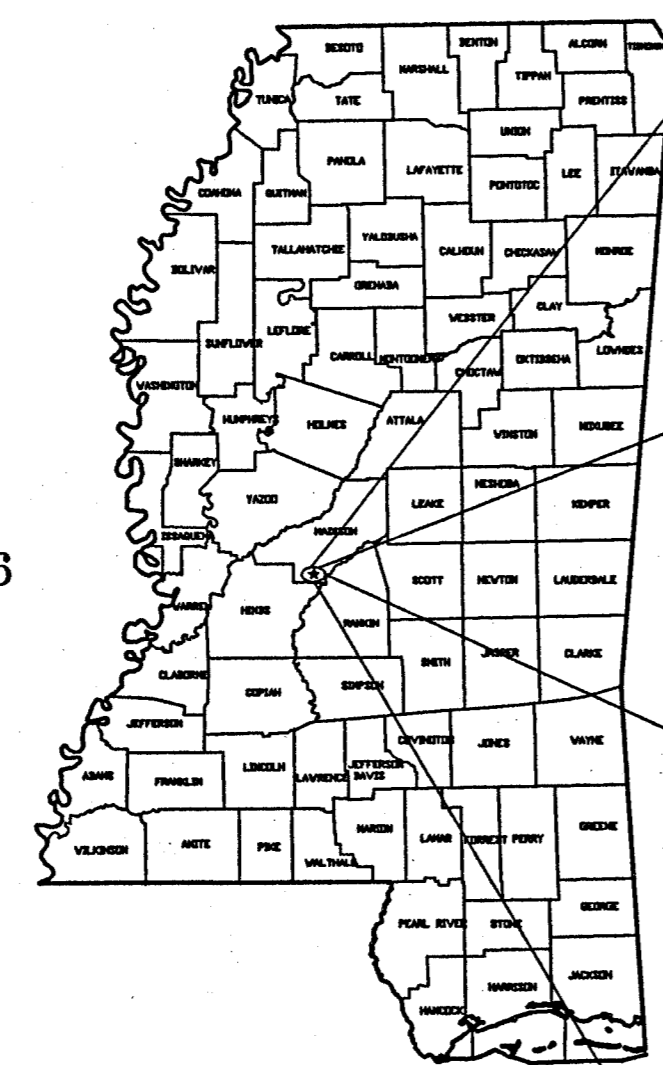
MIKE McCOLLUM

ASST. DIRECTOR OF PUBLIC WORKS

BEN MAYS

CITY ENGINEER

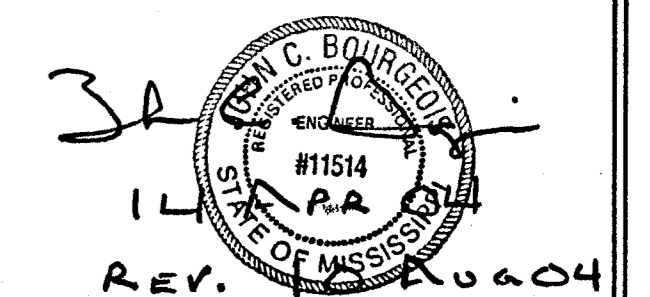
DAVID E. WILLIAMS, P.E.



VICINITY MAP
AUGUST, 2004
C04-011

INDEX OF DRAWINGS	
SHEET NO.	DESCRIPTION
1	Cover / Index Sheet
C1.1	Summary of Quantities/General Notes
C2.1	Layout Plan - Ridgeland Ave. Intersection
C3.1	Plan/Profile - Beaver Creek - Segment 1 (Sta 0+00 - Sta 11+00)
C3.2	Plan/Profile - Beaver Creek - Segment 1 (Sta 11+00 - Sta 19+00)
C3.3	Plan/Profile - Beaver Creek - Segment 1 (Sta 19+00 - Sta 24+72.62)
C3.4	Plan/Profile - Sunnybrook Rd. - Segment 2 (Sta 24+72.62 - Sta 36+00)
C3.5	Plan/Profile - Sunnybrook Rd. - Segment 2 (Sta 36+00 - Sta 44+72.64)
C4.1	Sewer Details

**WAGGONER ENGINEERING, INC.
JACKSON, MISSISSIPPI**



PWP-1949

SUMMARY OF QUANTITIES - SEGMENT 1

ITEM NO	DESCRIPTION	UNIT	PRELIMINARY QUANTITY	FINAL QUANTITY
1	Clearing & Grubbing	LS	1	
2	Undercut Excavation (FM)	CY	125	
3	12" Sanitary Sewer (4'-6')	LF	1286	
4	12" Sanitary Sewer (6'-8')	LF	1050	
5	12" Sanitary Sewer (8'-10')	LF	136	
6	24" Steel Casing (Bored and Jacked)	LF	70	
7	Sanitary Sewer Manhole (4'-6')	EA	4	
8	Sanitary Sewer Manhole (6'-8')	EA	4	
9	Sanitary Sewer Manhole (8'-10')	EA	1	
10	2" Sanitary Sewer Service Line	LF	202	
11	Tie to Existing Manhole	EA	1	

SUMMARY OF QUANTITIES - SEGMENT 2

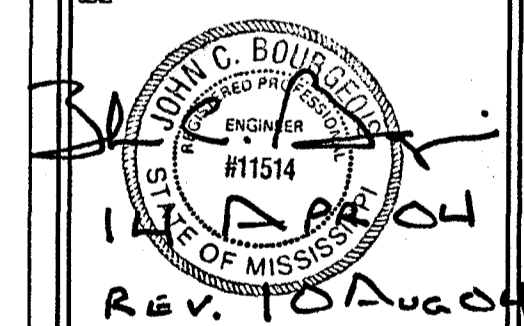
ITEM NO	DESCRIPTION	UNIT	PRELIMINARY QUANTITY	FINAL QUANTITY
1	Clearing & Grubbing	LS	1	
2	Undercut Excavation (FM)	CY	105	
3	12" Sanitary Sewer (4'-6')	LF	250	
4	12" Sanitary Sewer (6'-8')	LF	873	
5	12" Sanitary Sewer (8'-10')	LF	232	
6	12" Sanitary Sewer (10'-12')	LF	120	
7	12" Sanitary Sewer (12'-14')	LF	160	
8	12" Sanitary Sewer (14'-16')	LF	134	
9	12" Sanitary Sewer (16'-18')	LF	137	
10	12" Sanitary Sewer (18'-20')	LF	94	
11	24" Steel Casing (Open Cut)	LF	181	
12	Sanitary Sewer Manhole (6'-8')	EA	1	
13	Sanitary Sewer Manhole (8'-10')	EA	3	
14	Sanitary Sewer Manhole (14'-16')	EA	1	
15	Sanitary Sewer Manhole (16'-18')	EA	1	
16	2" Sanitary Sewer Service Line	LF	46	
17	Tie to Existing Manhole	EA	1	
18	Seeding, Fertilizing and Mulching	AC	2.4	

GENERAL CONSTRUCTION NOTES

- The existing utility locations shown on the Drawings are approximate only. The Contractor shall coordinate the location (horizontal and vertical) of existing utilities (power, telephone, gas, water, sewer, etc.) with the appropriate utility company before construction begins.
- Utility lines or service lines encountered during construction, whether shown on the Drawings or not, shall be protected by the Contractor and repairs necessary due to damage to same by the Contractor shall be at no additional cost to the Owner.
- The Contractor shall establish a vegetative cover on all areas where the existing vegetation was removed or disturbed during construction, unless solid sod is required. Solid sod is required in the specific areas shown on the typical sections, and may be required in other areas as directed by the engineer.
- Unsuitable bedding, backfill or site subgrade material which may be encountered shall be excavated to the limits required and backfilled with acceptable material to the lines and grades shown on the Drawings.
- TBM's which are or may be in conflict with construction activities shall be relocated by the contractor prior to commencement of construction in the immediate area.
- The Engineer will stake the base line and control points necessary for the required construction staking of the project, one time only. Detailed construction staking will be by Contractor and shall be an absorbed cost item.
- The Contractor shall be responsible for completing all sampling and testing of materials incorporated into the project and for submission of same to Engineer for review. Prior use test results, manufacturer's certificates, or proposed mix designs shall be submitted to the Engineer for review before incorporation into project. This shall include backfill, concrete, asphalt, steel, striping material, piping, materials, aggregates, seed and other items as specified by the Engineer. All testing shall be an absorbed cost item.
- Sanitary sewer lengths may be varied during construction of project to conform to normal pipe joint lengths.
- Existing sanitary sewer manhole tops, water valves, valve boxes, meters, storm sewer or other related appurtenances shall, when required, be adjusted to finished grade by Contractor as an absorbed cost of the work. Castings required to be removed shall be salvaged to the Owner by the Contractor.
- Testing certifications shall state that the subject material meets the specified quality, grade, purity, class or weight, or that the subject material meets or exceeds the requirement of the applicable ASTM, AASHTO, MDOT or other standards. Certifications shall be submitted to the Engineer prior to incorporation of the subject material into the project.
- Traffic signs or delineators required under this Contract shall be constructed and installed in accordance with the Project Drawings and the MISSISSIPPI STANDARD SPECIFICATIONS FOR ROAD AND BRIDGE CONSTRUCTION, MDOT, 1990 EDITION as if said standards were written out herein in full. Measurement and Payment for traffic signs and delineators shall be as specified on the Bid Form.
- Contractor shall remove and relocate existing mailboxes, fence lines, and signs as directed by the engineer.
- Contractor shall salvage to the City all traffic signs, water valves, fire hydrants, and drainage pipes that are removed during construction, unless otherwise refused by the City.
- Public Utilities
A. Water And Sewer -- City of Ridgeland
B. Electricity -- Entergy
C. Gas -- Reliant Energy
D. Cable -- Time Warner
E. Telephone -- Bell South

SUNNYBROOK ROAD
SANITARY SEWER EXTENSION
CITY OF RIDGELAND, MISSISSIPPI

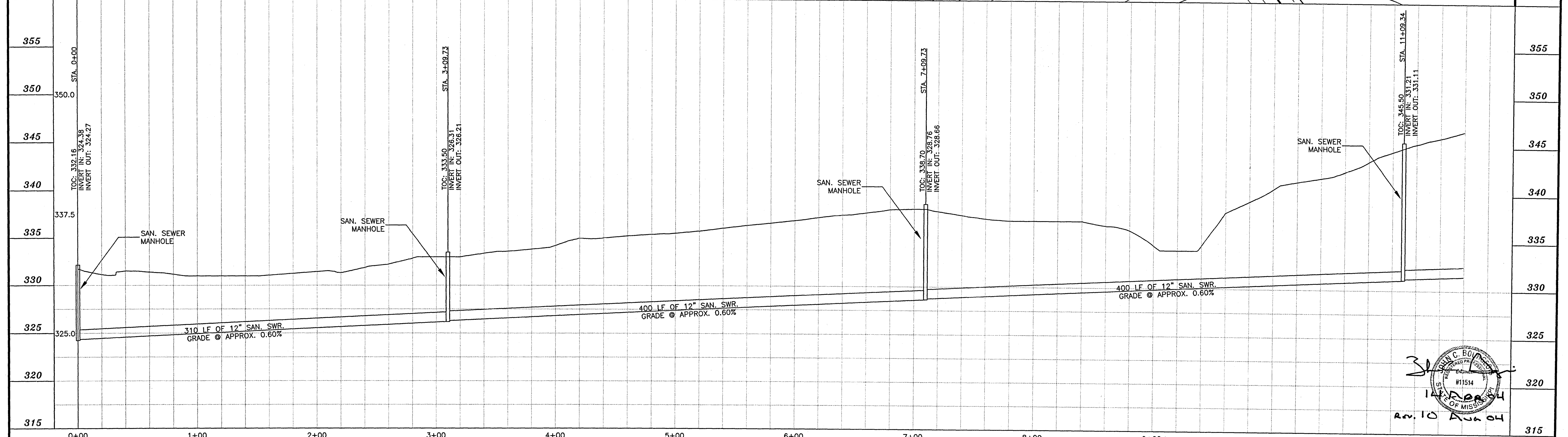
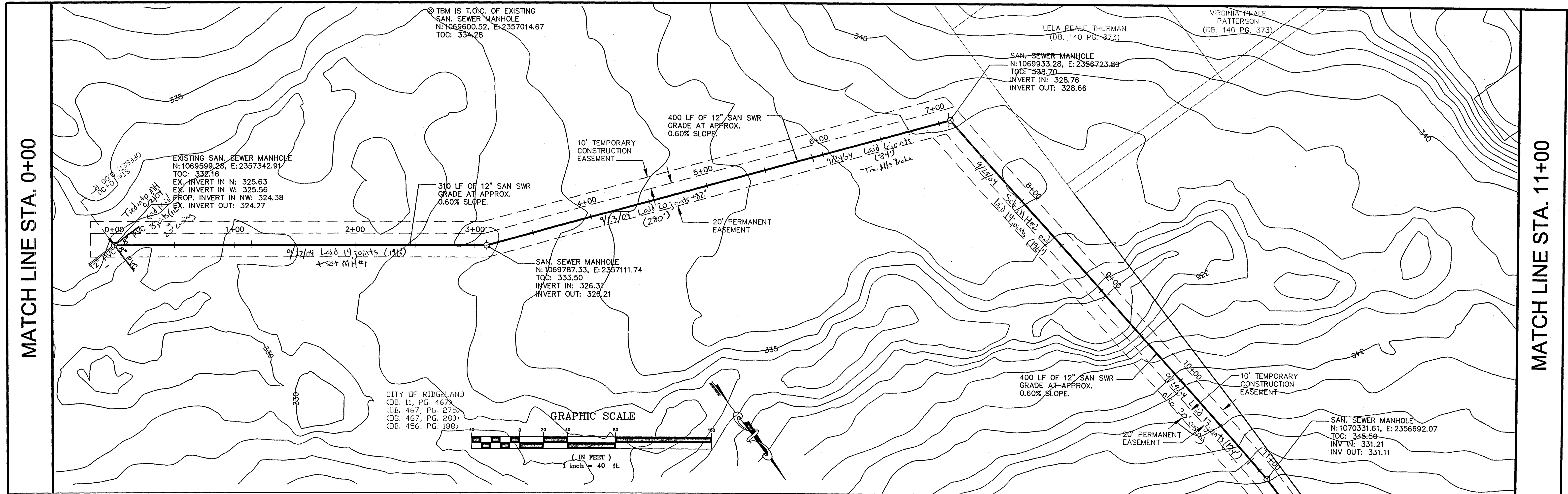
DRAWING REVISIONS		
NO.	REMARKS	DATE



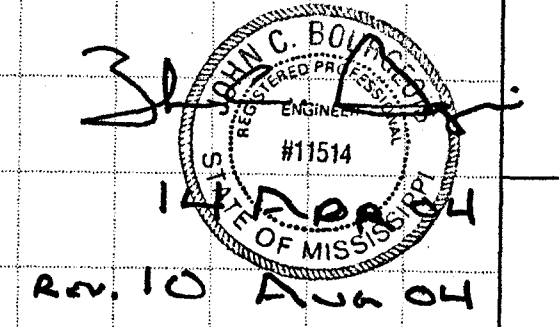
DRAWN BY: JC	SCALE: NTS
DESIGNED BY: JC	DATE: 04-06-04
CHECKED BY: JB	PROJECT: C04-011
P&N NAME:	

DRAWING TITLE: **SUMMARY OF QUANTITIES/GENERAL NOTES**

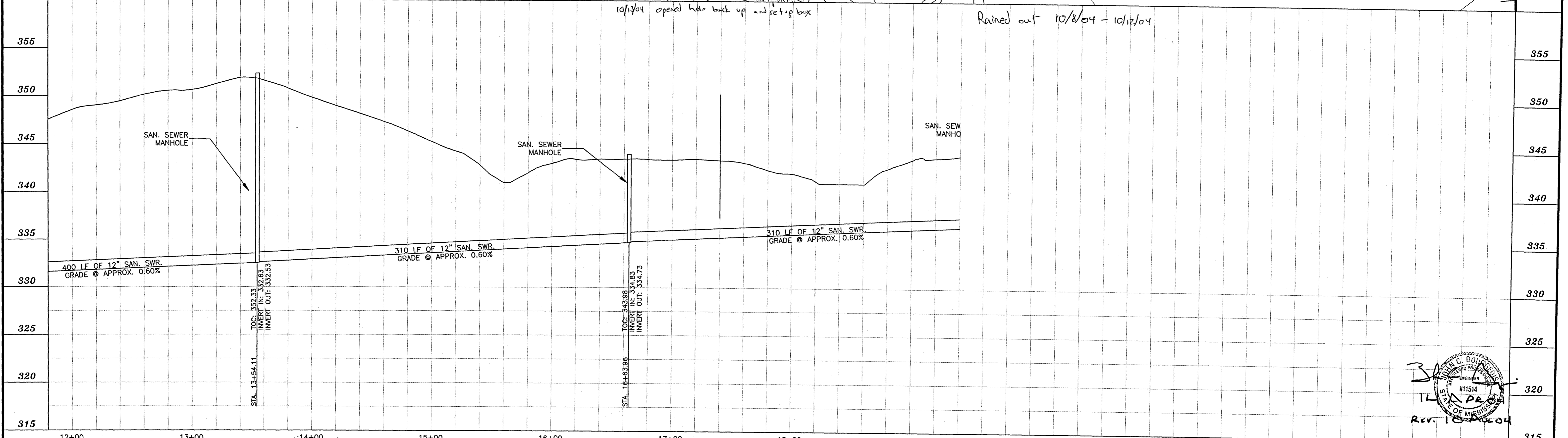
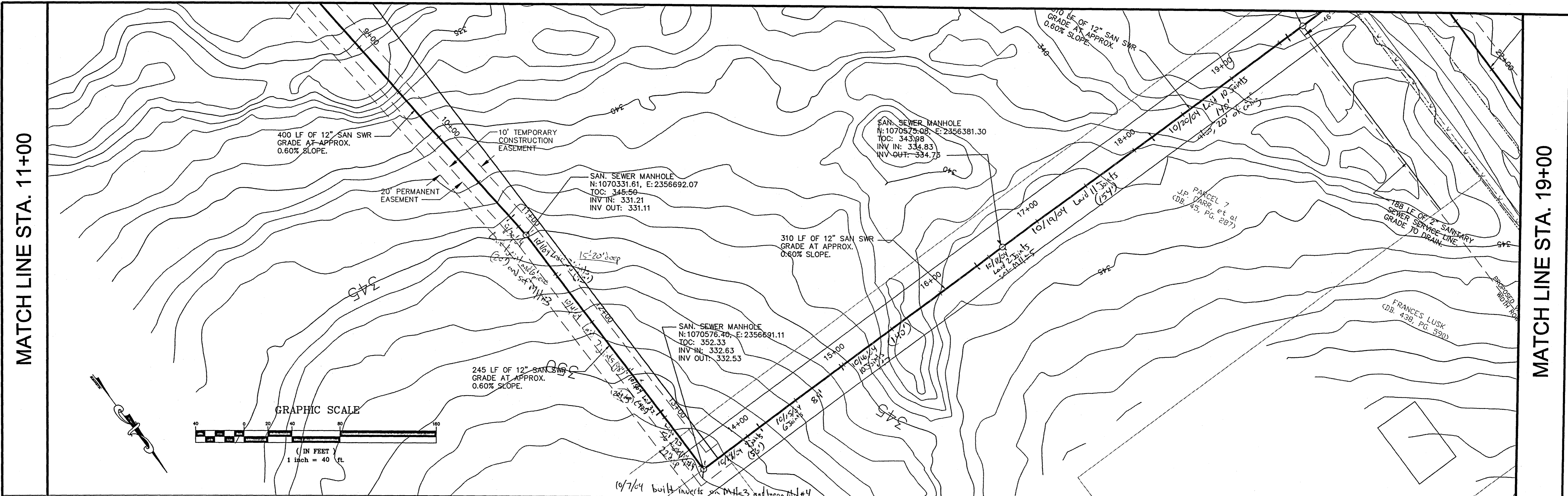
P:\Ridgeland_City ofC04011-Sunnybrook_Sewer\04\04-Sunnybrook_Sewer Plan_8-3-04.dwg, Plan and Profile, 8/11/2004 8:51:40 AM, C:\OS2\03-1-new.rpt



NO. DATE		REVISIONS		DRAWN BY: JC/SM DESIGNED BY: JC CHECKED BY: JB	DATE: MARCH 2004 PROJECT: C04-011	HORIZ. SCALE: 1" = 40' VERT. SCALE: 1" = 5'	143-A LEFLEURS SQUARE JACKSON, MS 39211 601-355-9526 FAX 601-352-3945	CITY OF RIDGELAND MADISON COUNTY, MISSISSIPPI SUNNYBROOK ROAD SANITARY SEWER EXTENSION	PLAN AND PROFILE (STA. 0+00 TO STA. 11+00)	SHEET NUMBER: C3.1
----------	--	-----------	--	--	--------------------------------------	--	--	--	--	------------------------------



P:\Ridgeland_City of\CO4011-Sunnybrook_Sewer\DWG\CO104-Sunnybrook_Sewer_Plan_8-3-04_2.dwg, Plan and Profile, 8/11/2004, 8:52:02 AM, C:\OS2\003_3-nrw.rps



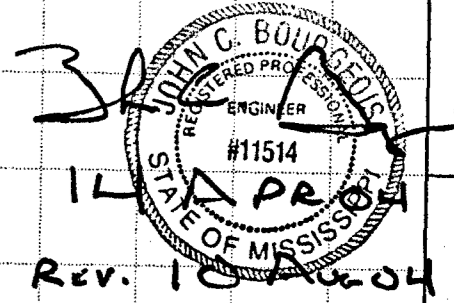
NO. DATE		REVISIONS		BY	CHECKED BY	DATE	PROJECT	SCALE	DATE	PROJECT	SCALE	SHEET NUMBER	
				JB	JB	MARCH 2004	C04-011	1" = 5'				C3.2	

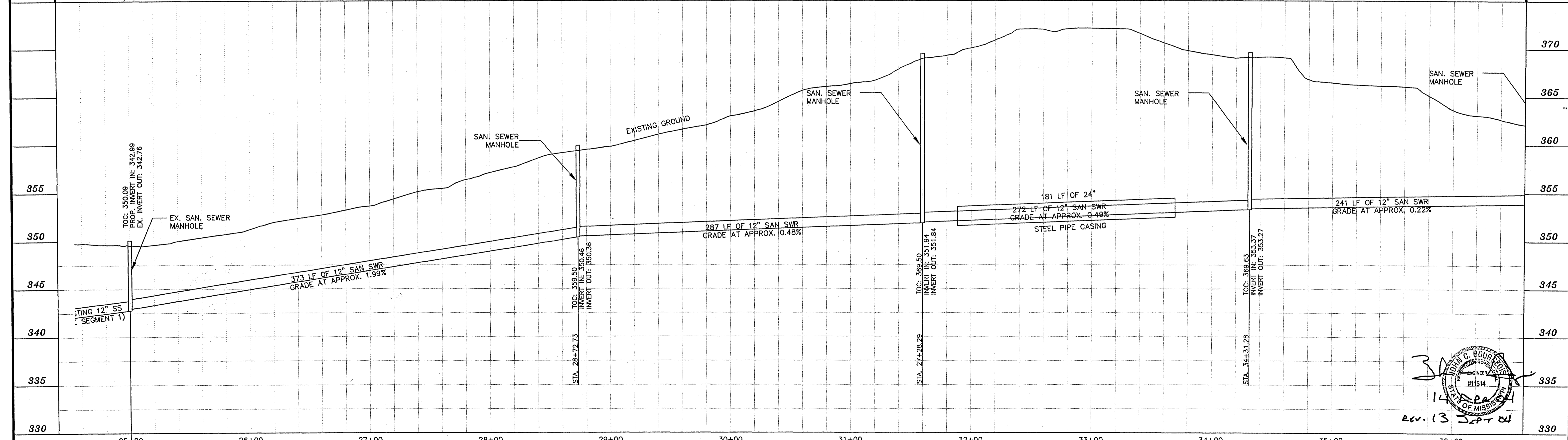
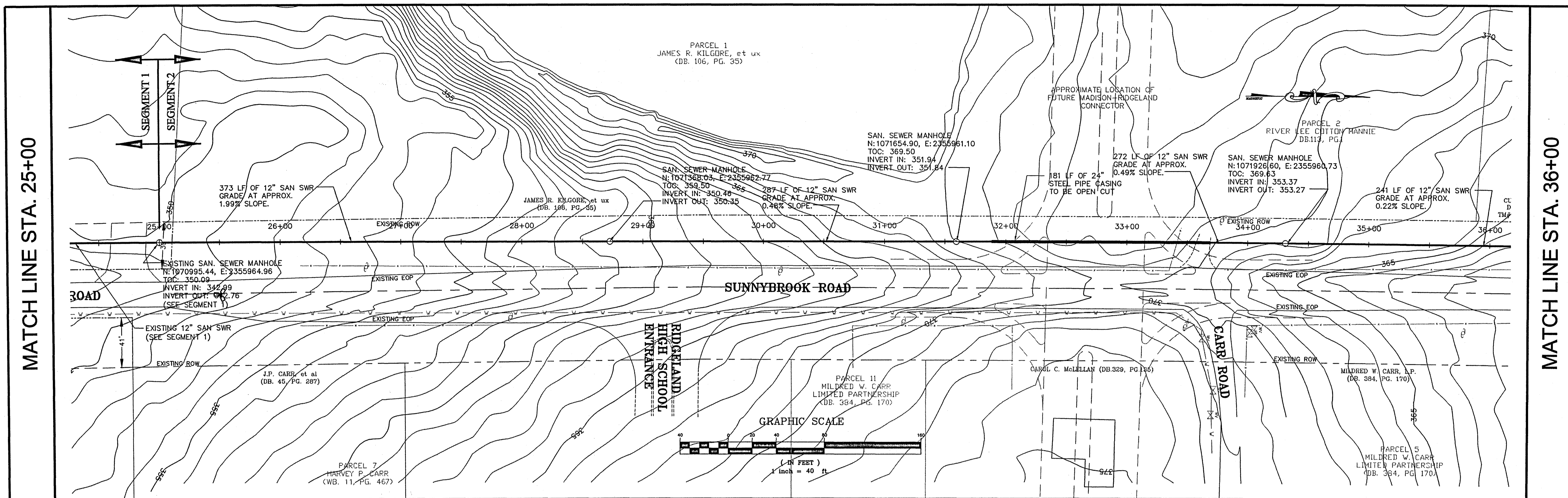


143-A LEFLEURS SQUARE
JACKSON, MS 39211
601-355-9526
FAX 601-352-3945

CITY OF RIDGELAND
MADISON COUNTY, MISSISSIPPI
SUNNYBROOK ROAD SANITARY SEWER EXTENSION

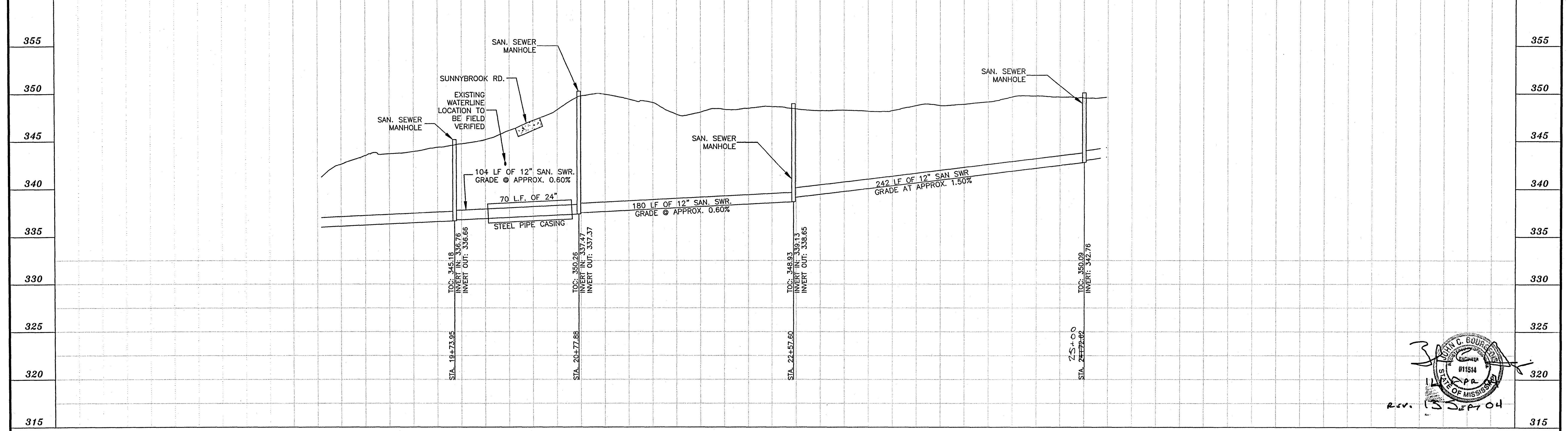
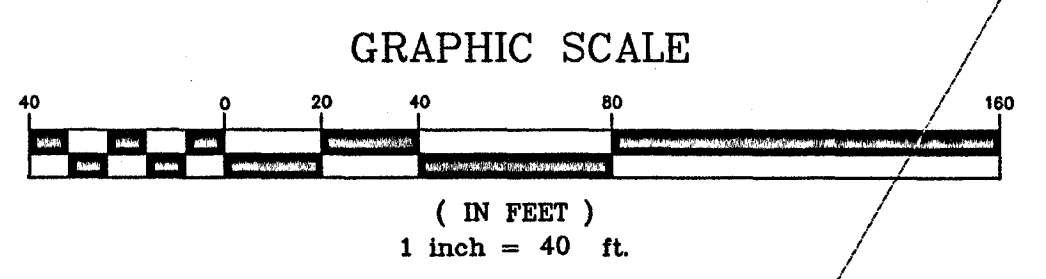
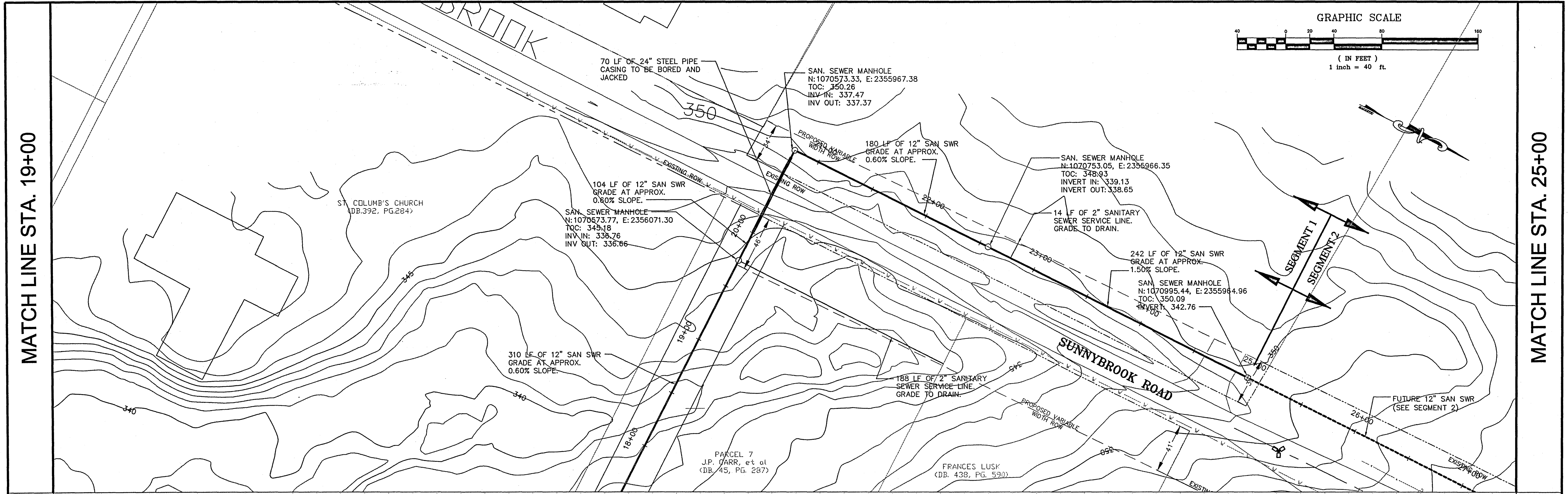
PLAN AND PROFILE
(STA. 11+00 TO STA. 19+00)





NO.	DATE	REVISIONS	BY	DESIGNED BY: JC/SM	DATE: MARCH 2004	PROJECT: C04-011	CHECKED BY: JB	SCALE: 1" = 40'	SCALE: 1" = 5'		143-A LEFLEURS SQUARE JACKSON, MS 39211 601-355-9526 FAX 601-352-3945	CITY OF RIDGELAND MADISON COUNTY, MISSISSIPPI SUNNYBROOK ROAD SANITARY SEWER EXTENSION	PLAN AND PROFILE (STA. 25+00 TO STA. 36+00)	SHEET NUMBER: C3.4
-----	------	-----------	----	--------------------	------------------	------------------	----------------	-----------------	----------------	--	--	--	---	------------------------------

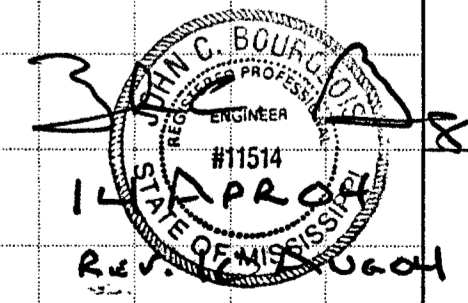
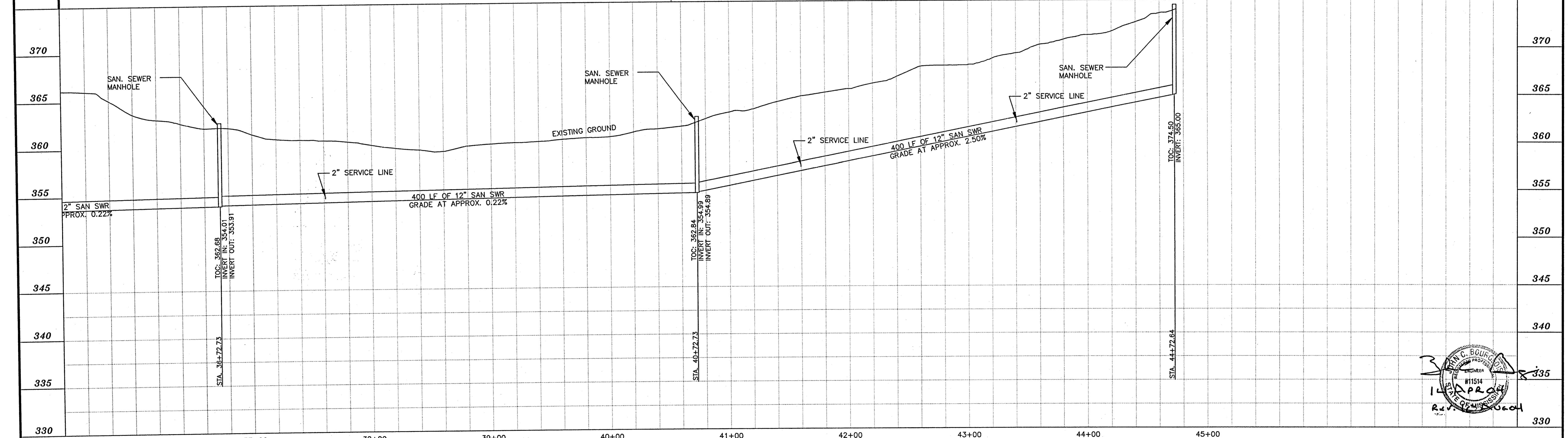
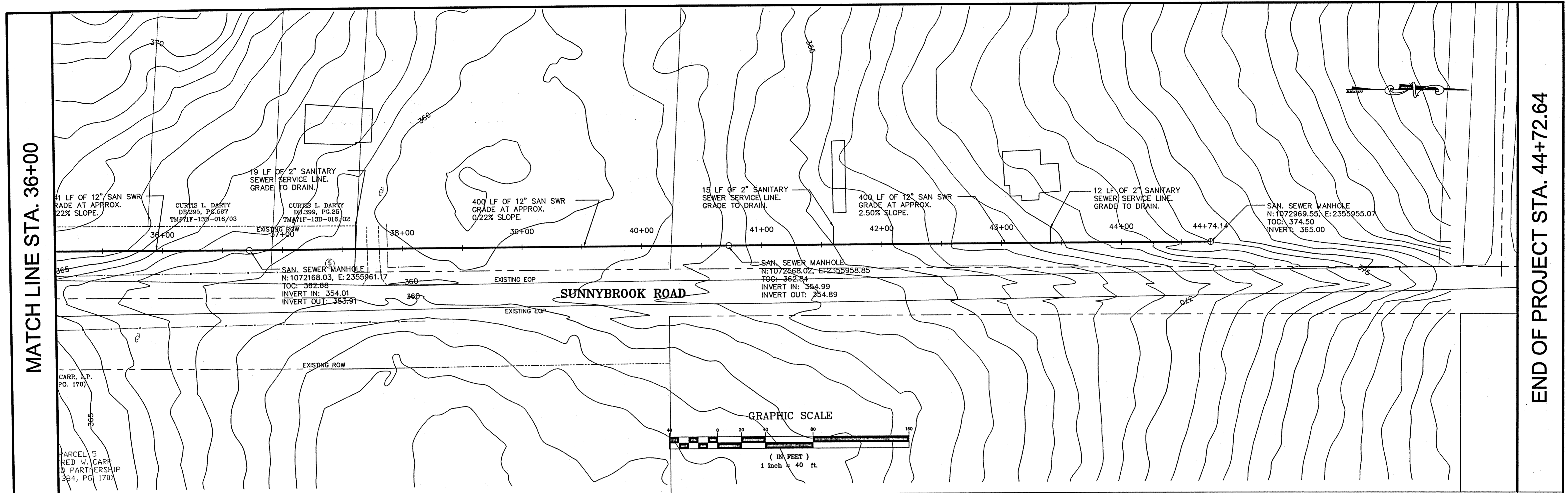
REV. 13 SEPT 04




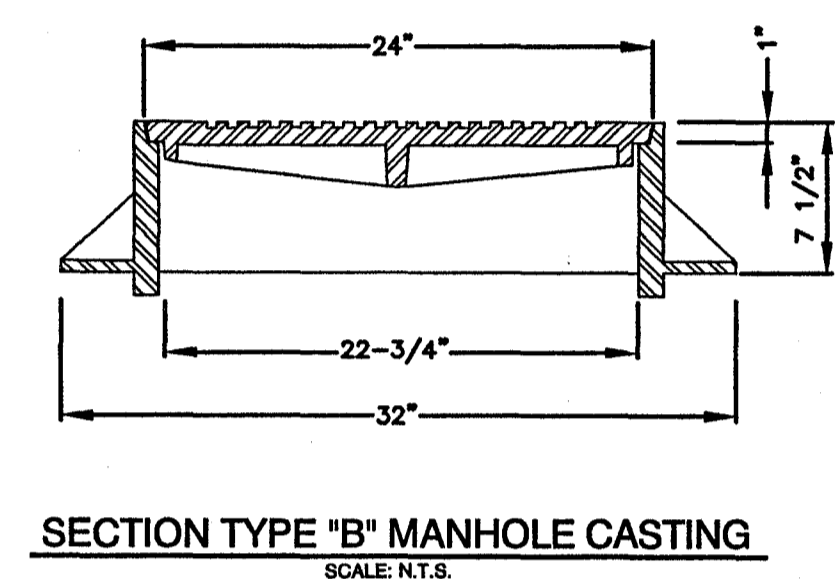
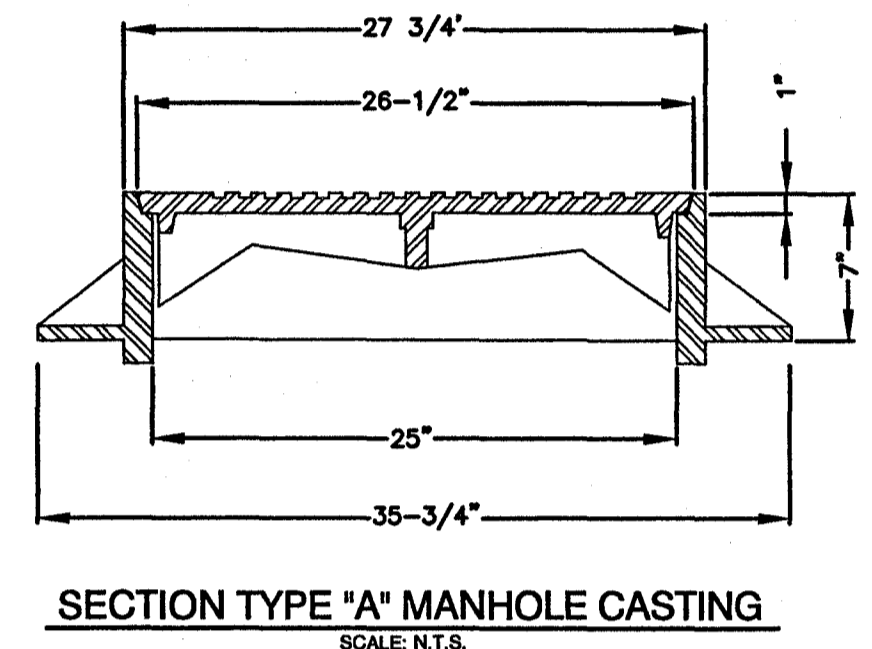
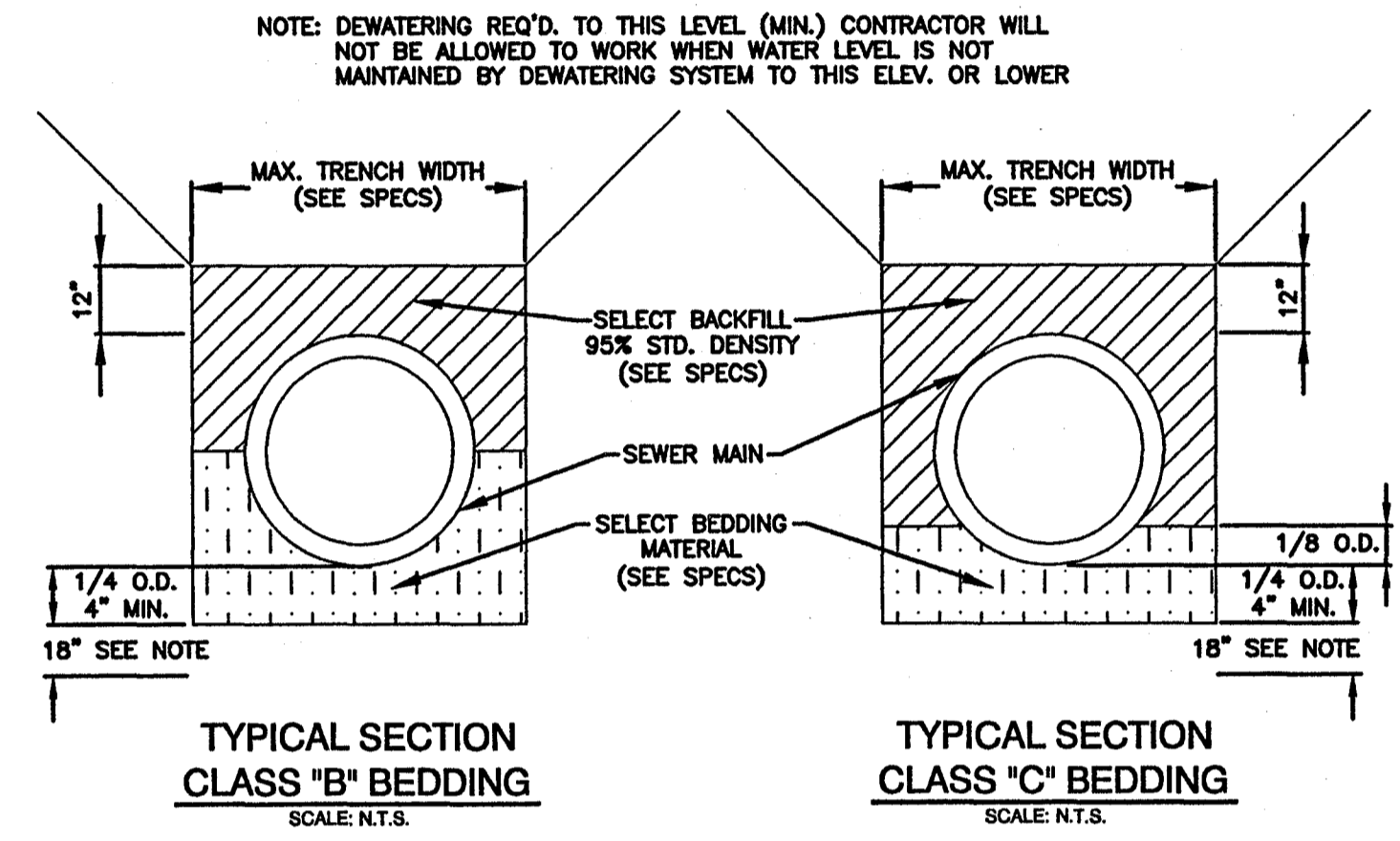
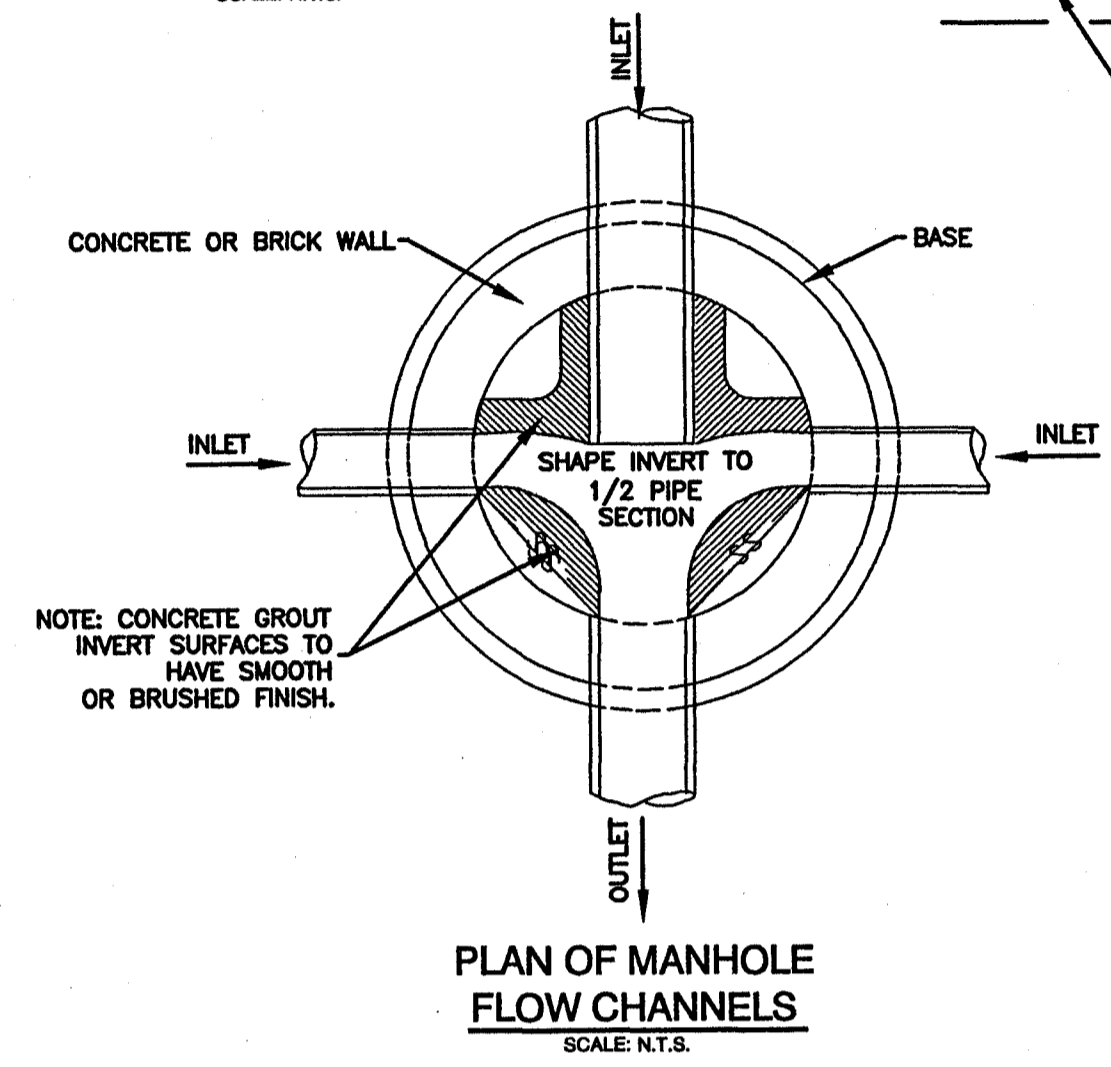
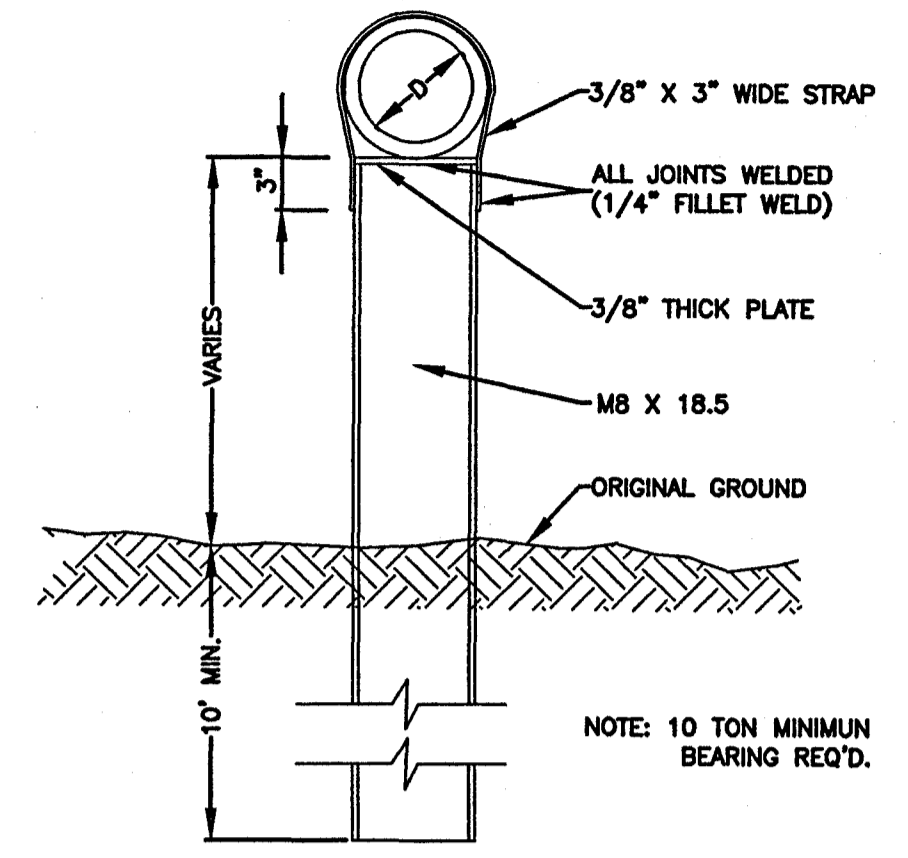
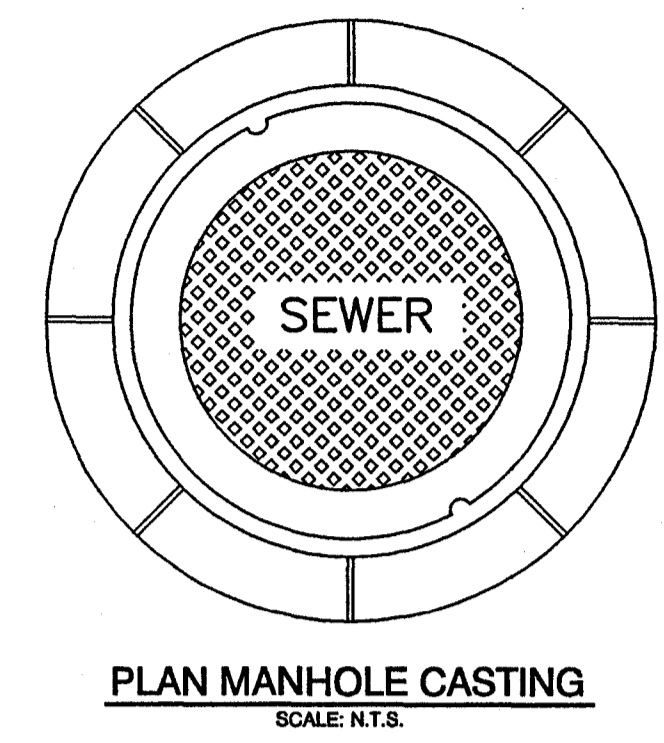
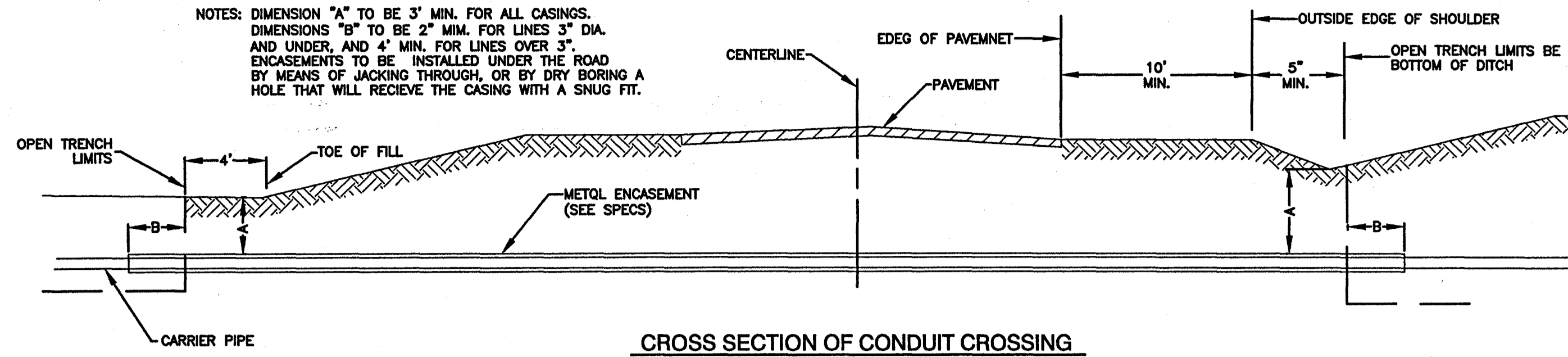
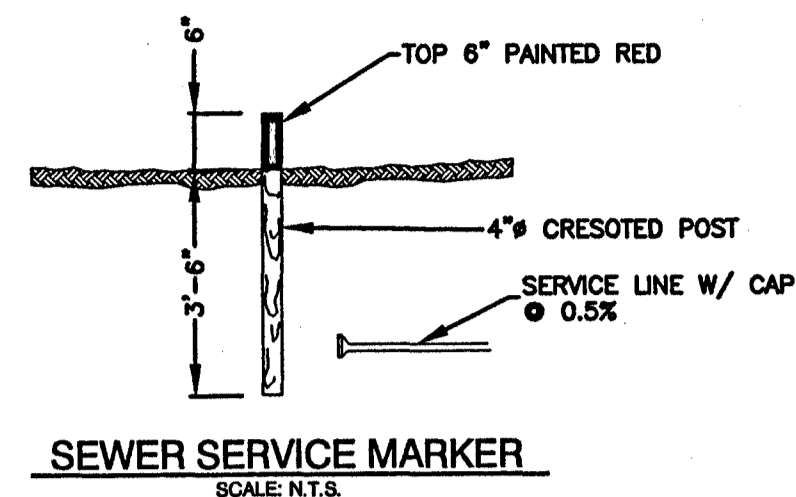
Rev. 13 SEPT 04

NO. DATE		REVISIONS		BY	DESIGNED BY: JC/SM CHECKED BY: JC DATE: MARCH 2004 PROJECT: C04-011	HORIZ. SCALE: 1" = 40' VERT. SCALE: 1" = 5'	 143-A LEFLEURS SQUARE JACKSON, MS 39211 601-355-9526 FAX 601-352-3945	CITY OF RIDGELAND MADISON COUNTY, MISSISSIPPI SUNNYBROOK ROAD SANITARY SEWER EXTENSION	PLAN AND PROFILE (STA. 19+00 TO STA. 25+00)	SHEET NUMBER: C3.3
----------	--	-----------	--	----	--	--	--	--	--	------------------------------

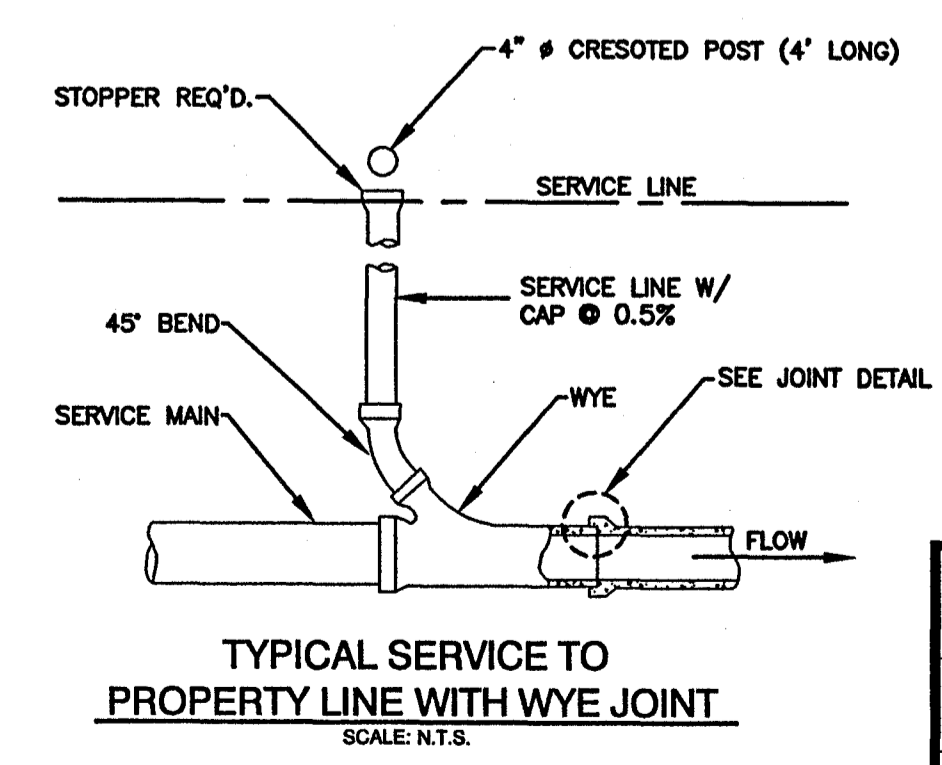
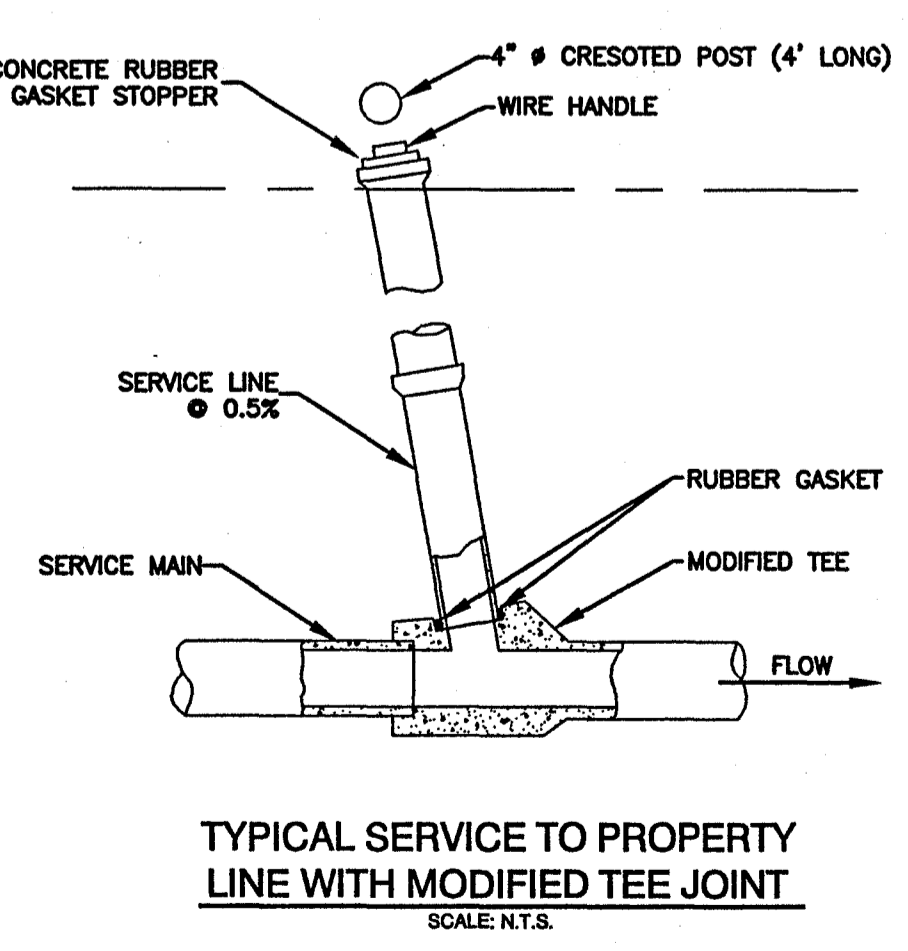
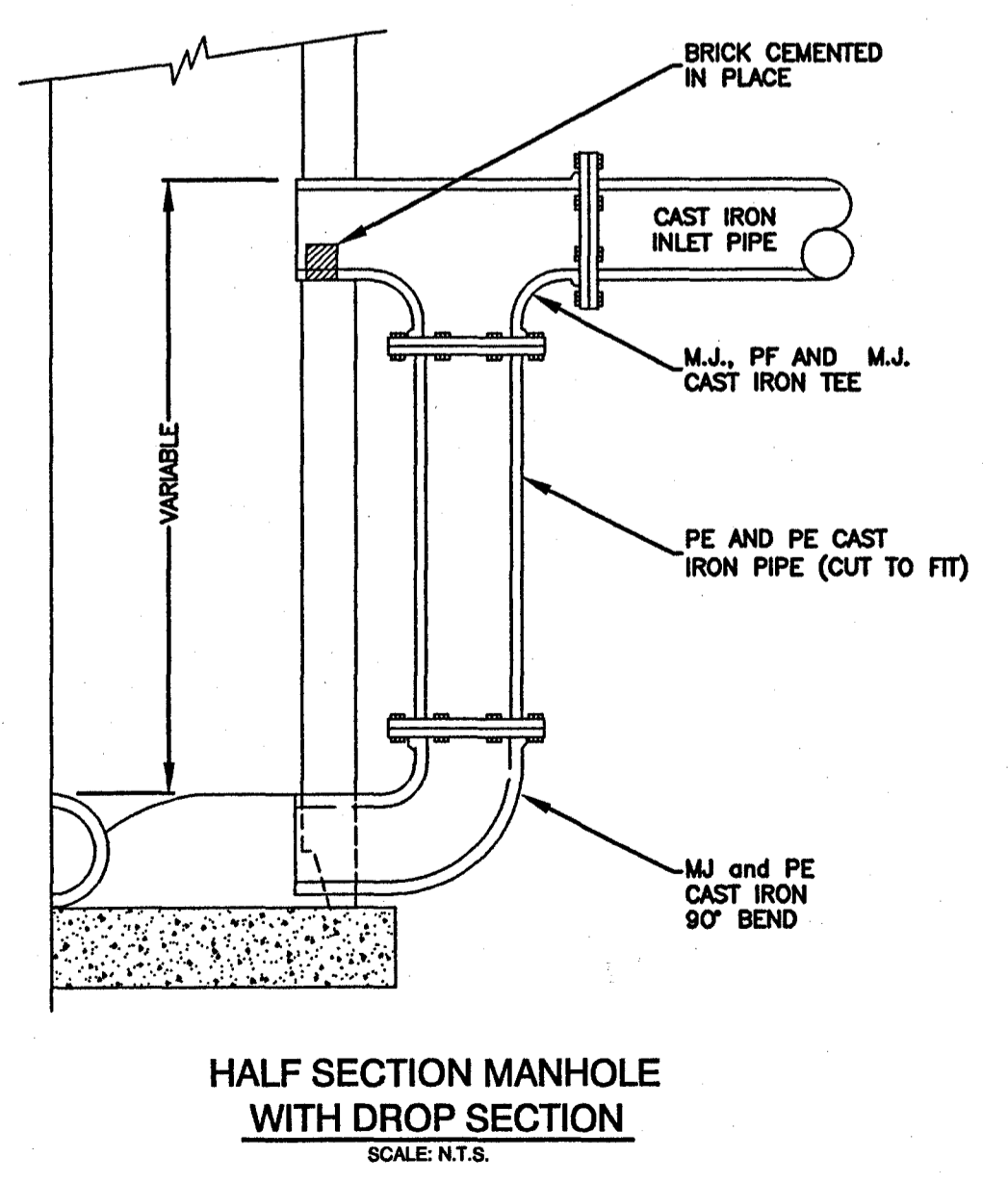
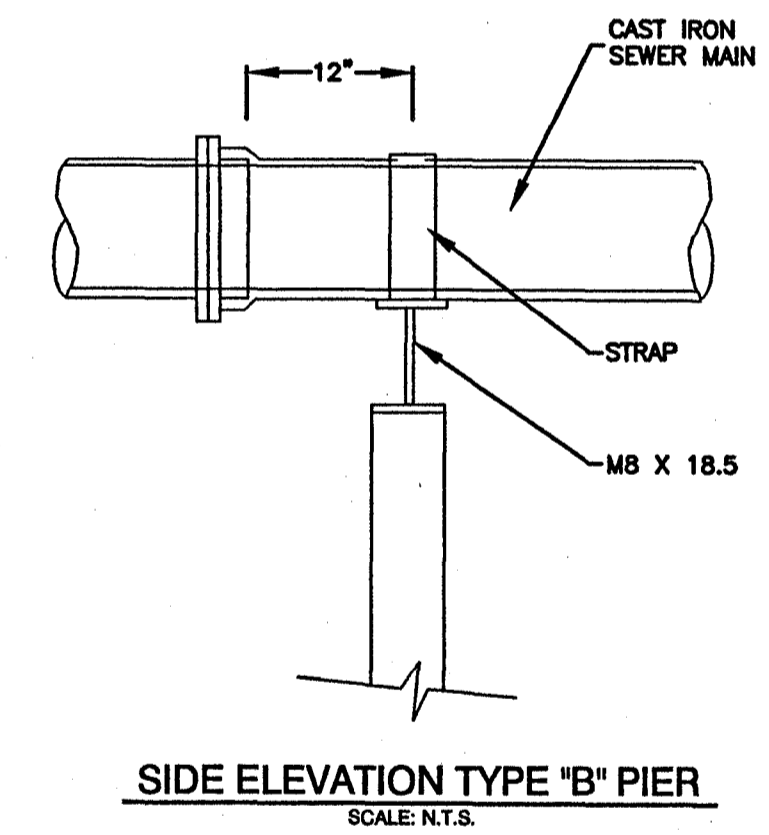
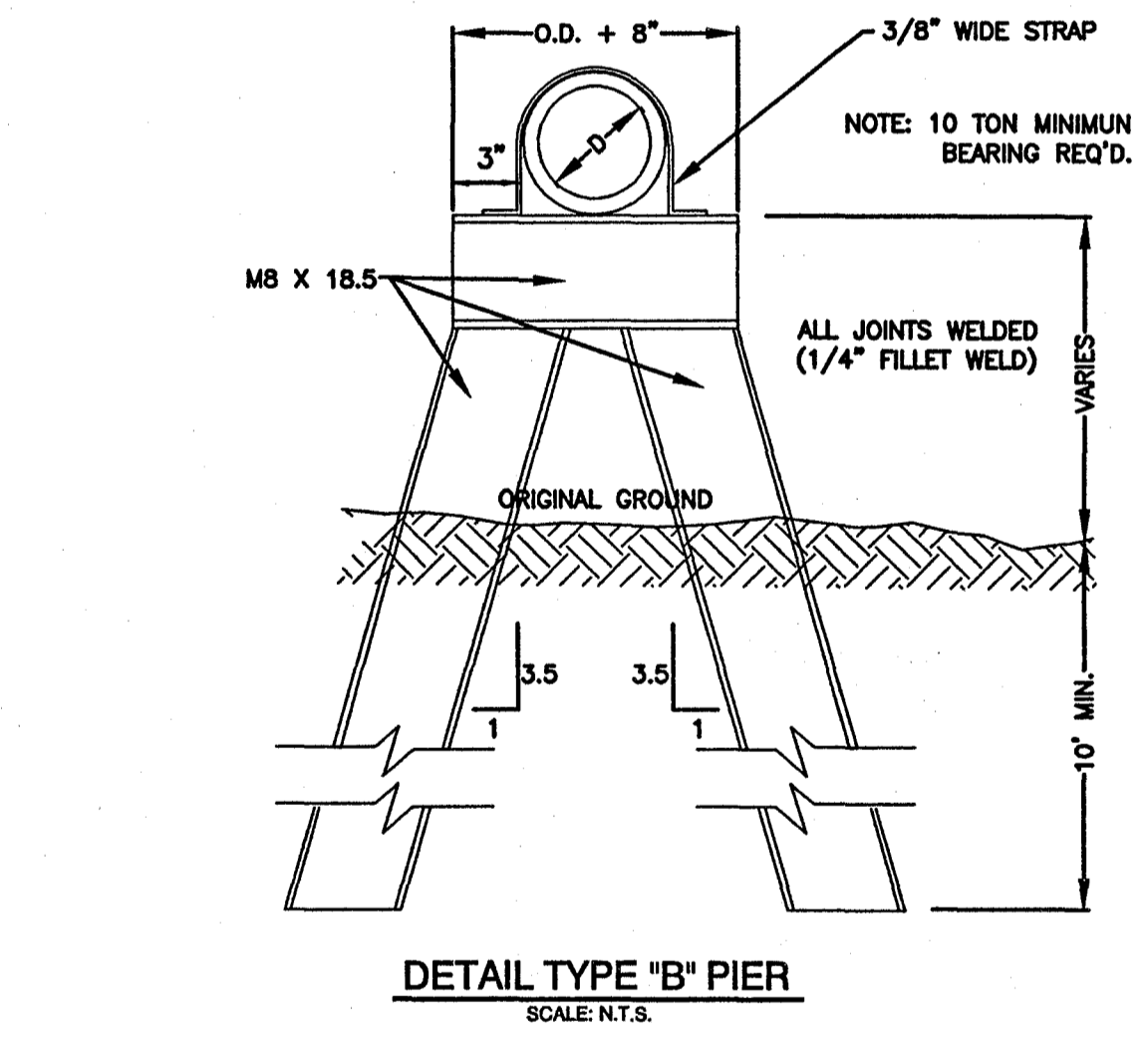
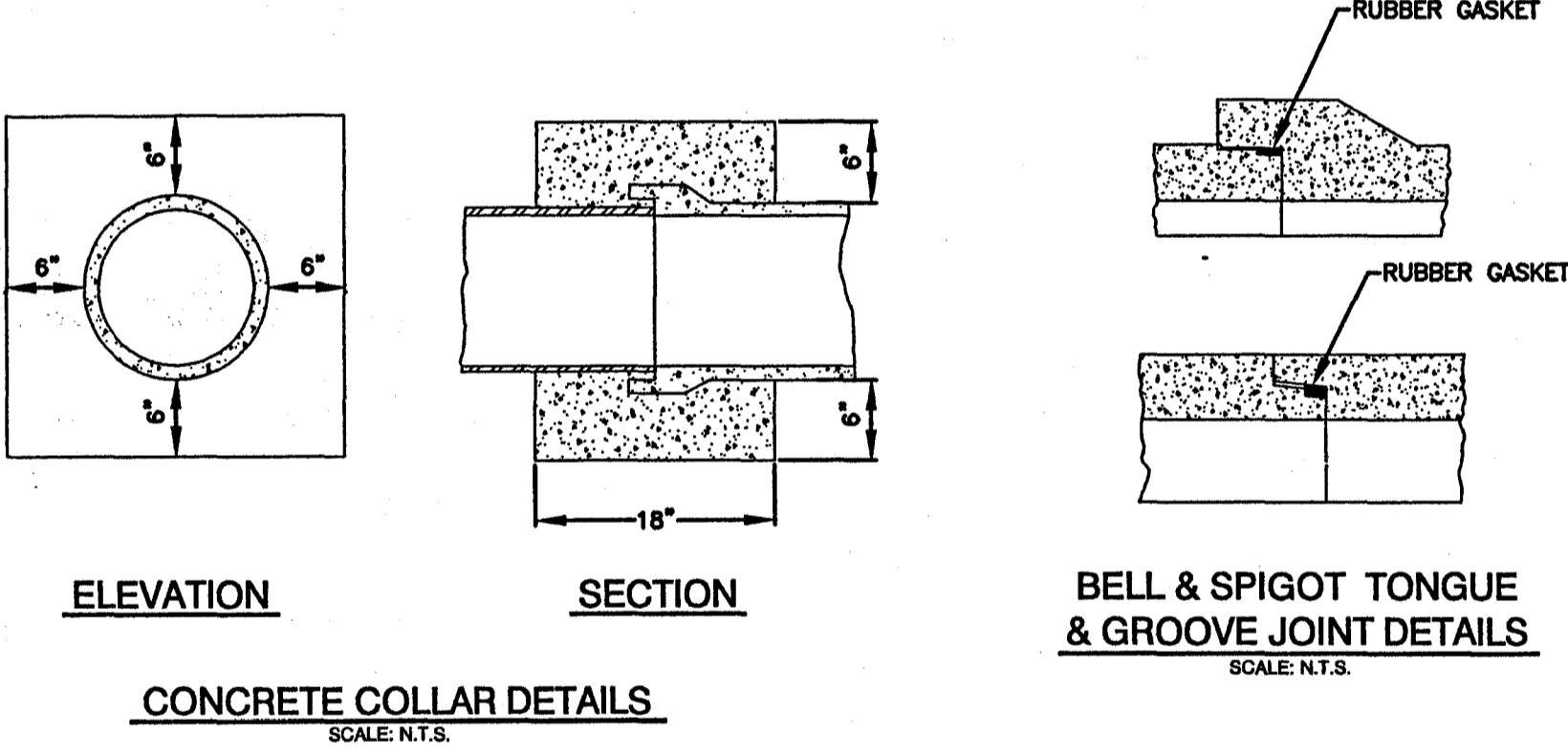
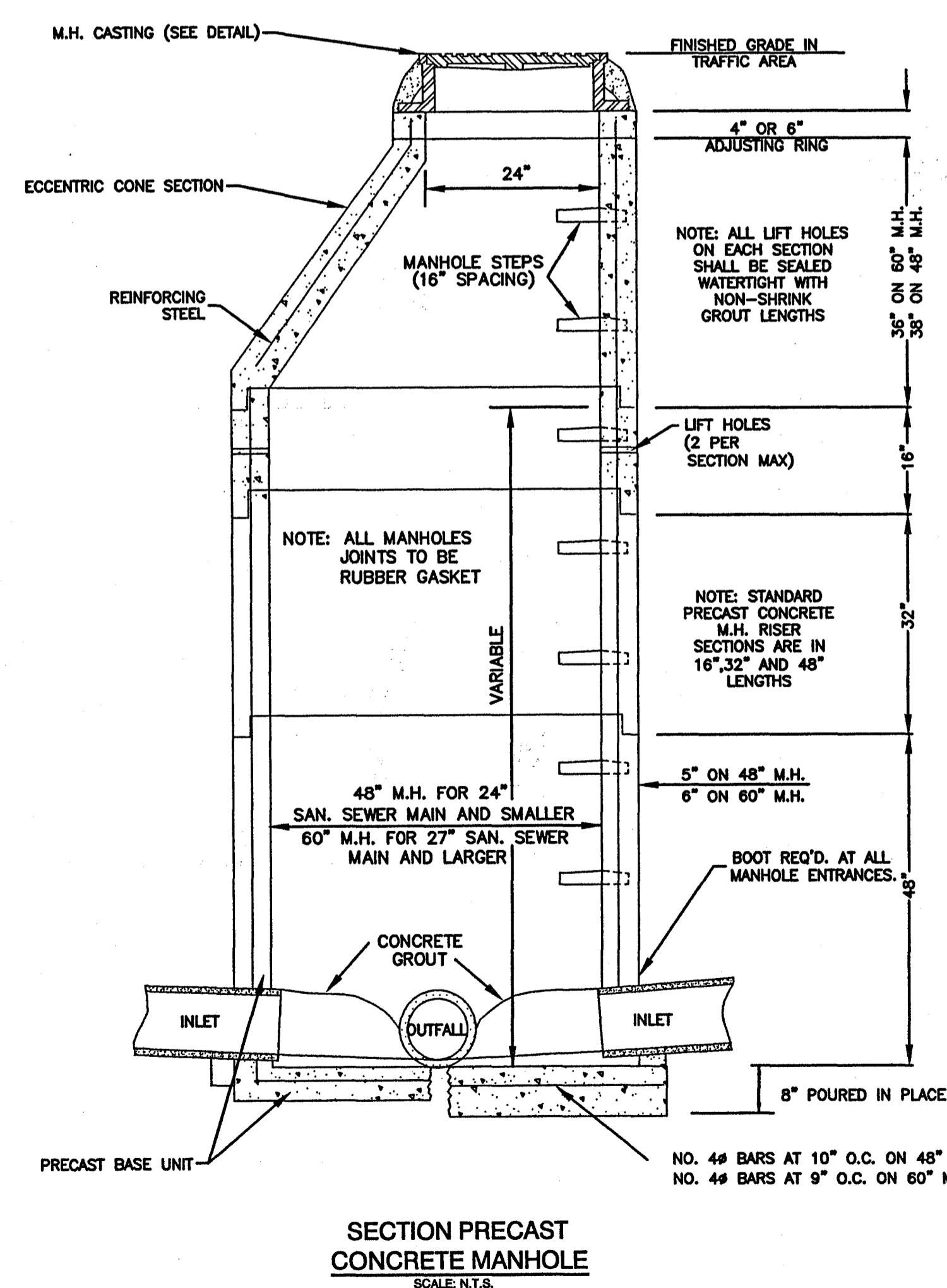
P:\Ridgeland_City of\CO4011-Sunnybrook_Sewer\Draw\CO1044-Sunnybrook_Sewer_Plan_8-3-04_2.dwg, Plan and Profile, 8/11/2004 8:53:12 AM, C:\T05600_3-new.p3



<table border="1" style="width:100%; border-collapse: collapse;"> <tr> <th>NO.</th> <th>DATE</th> <th>REVISIONS</th> </tr> <tr> <td> </td> <td> </td> <td> </td> </tr> </table>	NO.	DATE	REVISIONS				<table border="1" style="width:100%; border-collapse: collapse;"> <tr> <td>DESIGNED BY: JC/SM</td> <td>DATE: MARCH 2004</td> <td>HORIZ. SCALE: 1" = 40'</td> </tr> <tr> <td>CHECKED BY: JC</td> <td>PROJECT: C04-011</td> <td>VERT. SCALE: 1" = 5'</td> </tr> </table>	DESIGNED BY: JC/SM	DATE: MARCH 2004	HORIZ. SCALE: 1" = 40'	CHECKED BY: JC	PROJECT: C04-011	VERT. SCALE: 1" = 5'	 WAGGONER ENGINEERING, INC. <small>Expansive. Creative. Forward.</small>	143-A LEFLEURS SQUARE JACKSON, MS 39211 601-355-9526 FAX 601-352-3945	CITY OF RIDGELAND MADISON COUNTY, MISSISSIPPI SUNNYBROOK ROAD SANITARY SEWER EXTENSION	PLAN AND PROFILE (STA. 36+00 TO STA. 44+72.64)	SHEET NUMBER: C3.5
NO.	DATE	REVISIONS																
DESIGNED BY: JC/SM	DATE: MARCH 2004	HORIZ. SCALE: 1" = 40'																
CHECKED BY: JC	PROJECT: C04-011	VERT. SCALE: 1" = 5'																



NOTE: 1. USE TYPE "A" MANHOLE CASTING IN STREET R.O.W. 2. USE VULCAN NO. VM-8, (440 LBS.)
NOTE: 1. USE TYPE "B" MANHOLE CASTING FOR ANY MANHOLE NOT IN A STREET R.O.W. 2. VULCAN NO. VM-7 (300 LBS.) OR NEENAH NO. R-1779 (300 LBS.)



3/11/04
12/15/04
REV. 04/06/04

CITY OF RIDGELAND
SUNNYBROOK ROAD
SANITARY SEWER EXTENSION
STANDARD SEWER DRAWINGS
WAGGONER ENGINEERING, INC.
Consulting Engineers - Jackson, Mississippi

DRAWN BY: SM	DATE: 04/06/04	SHEET NUMBER
REVIEWED BY: JB	SCALE: N.T.S.	C4.1

P:\Ridgeland_City of Ridgeland\Sunnybrook_Sewer\01044-SEWER_STANDARD_DETAILS.dwg, Layout1, 8/10/2004 4:14:11 PM, Cse IDS600 3-new.plt