

CITY OF RIDGELAND, MISSISSIPPI

SUNNYBROOK ROAD WATER LINE IMPROVEMENTS

MAYOR:

GENE F. MCGEE

MAYOR PRO TEM:

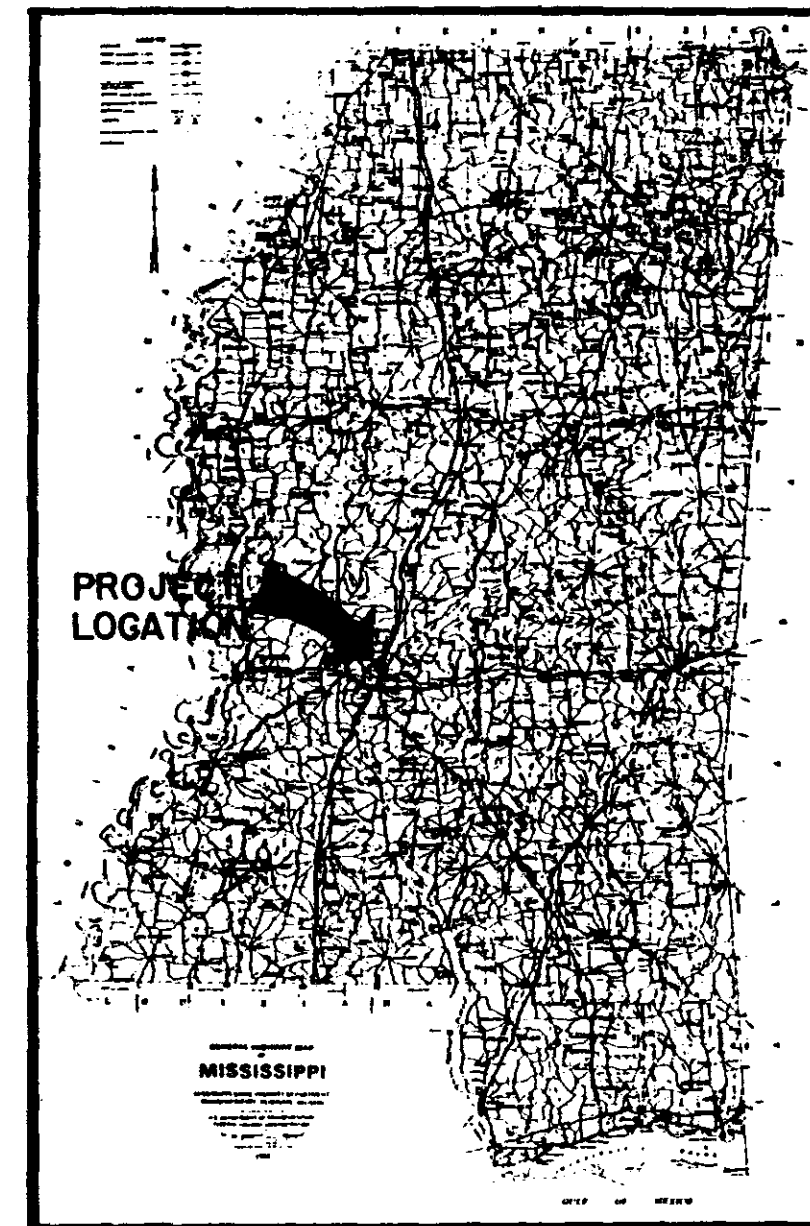
HARVEY CARR, JR.

CITY ATTORNEY:

JERRY MILLS

CITY CLERK:

MICHAEL McPHEARSON



LOCATION MAP

ALDERMEN:

BRIAN BARCELLONA

AL BIBLE

HARVEY CARR, JR.

LINDA DAVIS

DARYL SMITH

PUBLIC WORKS DIRECTOR:

SAM VINSON P.E.

ASSISTANT PUBLIC WORKS DIRECTOR

SID HAWTHORNE



City Of Ridgeland
Public Works Department
Ridgeland, Mississippi

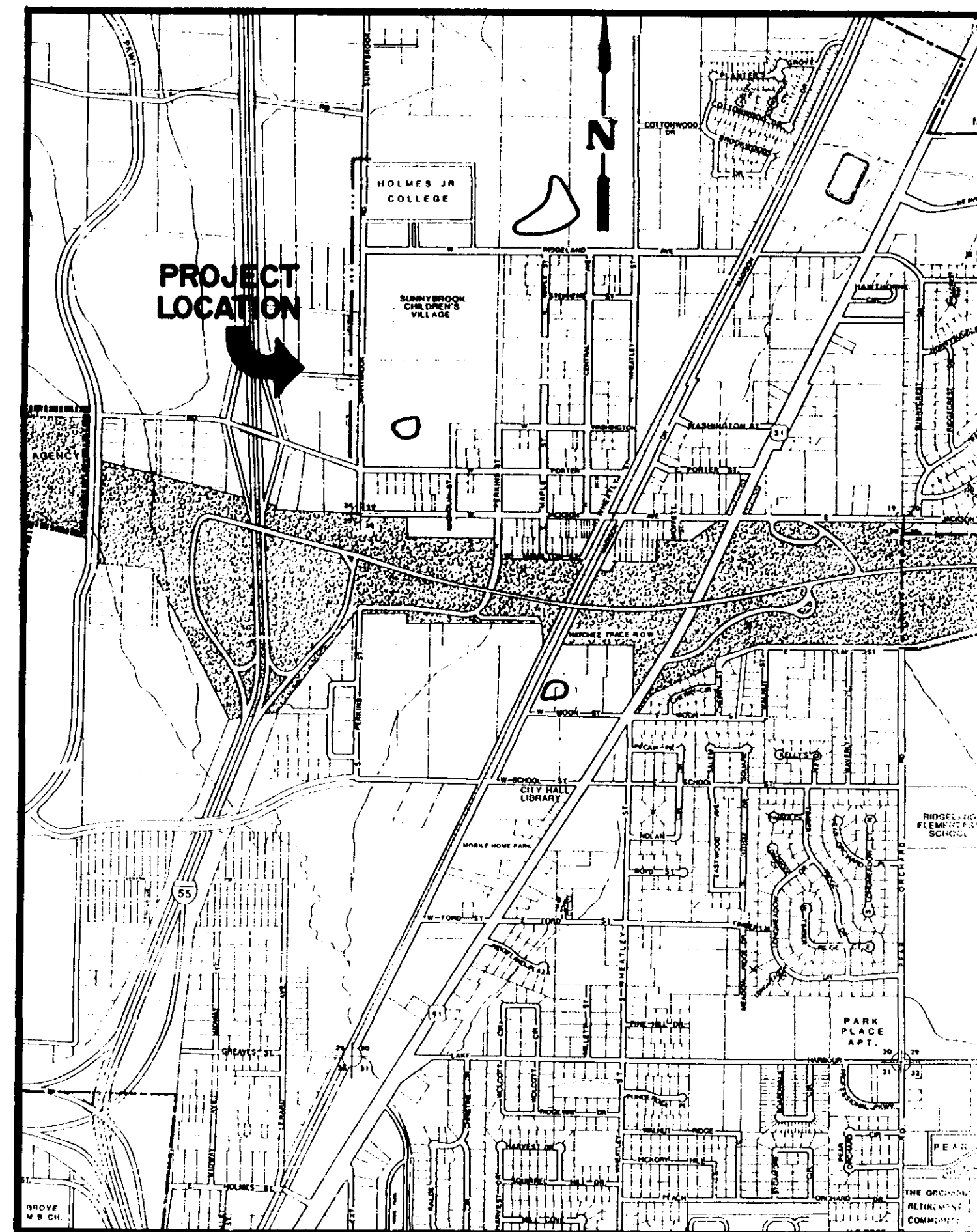
_____ Date _____

Sam C. Vinson, Jr. P.E.
Mississippi License No. 2325

PWP-01917

GENERAL NOTES

1. The existing utility locations shown on plans are approximate only. The Contractor shall coordinate the location of all existing utilities (power, telephone, gas, water, sewer, etc) with the appropriate utility company prior to bidding and before construction begins.
2. Any utility line or service line encountered during construction, whether shown on plans or not, shall be protected by the Contractor at no additional cost to the City.
3. The Contractor shall be responsible for verifying horizontal and vertical clearances on all utility crossings before installation.
4. The Contractor shall fertilize and seed all areas where the existing vegetation was removed or disturbed during construction and not required to be solid sodded by the Engineer. The fertilizer shall be applied and seeding shall be completed in accordance with these specifications.
5. Unsuitable bedding or backfill material which may be encountered shall be excavated to the limits directed by the Engineer and backfilled with approved material.
6. The Contractor shall maintain traffic to the businesses fronting along the project for the duration of the work.
7. All proposed water mains and force mains shall have minimum 36" cover.
8. The Contractor shall be responsible for completing all sampling and testing of materials, and for submission of same to Engineer for approval prior to their use. This shall include select bedding or backfill, concrete, asphalt, aggregates and other items as specified by the Engineer. This prior use testing shall be an absorbed item.
9. Routing of proposed mains shown on these plans is approximate only. Owner to stake route to be constructed.
10. All valves to be installed with boxes and concrete pads and marker pipes.
11. Mains installed "extra depth" to be installed with 5' minimum cover.
12. Location of vacuum relief valves to be determined by Engineer.



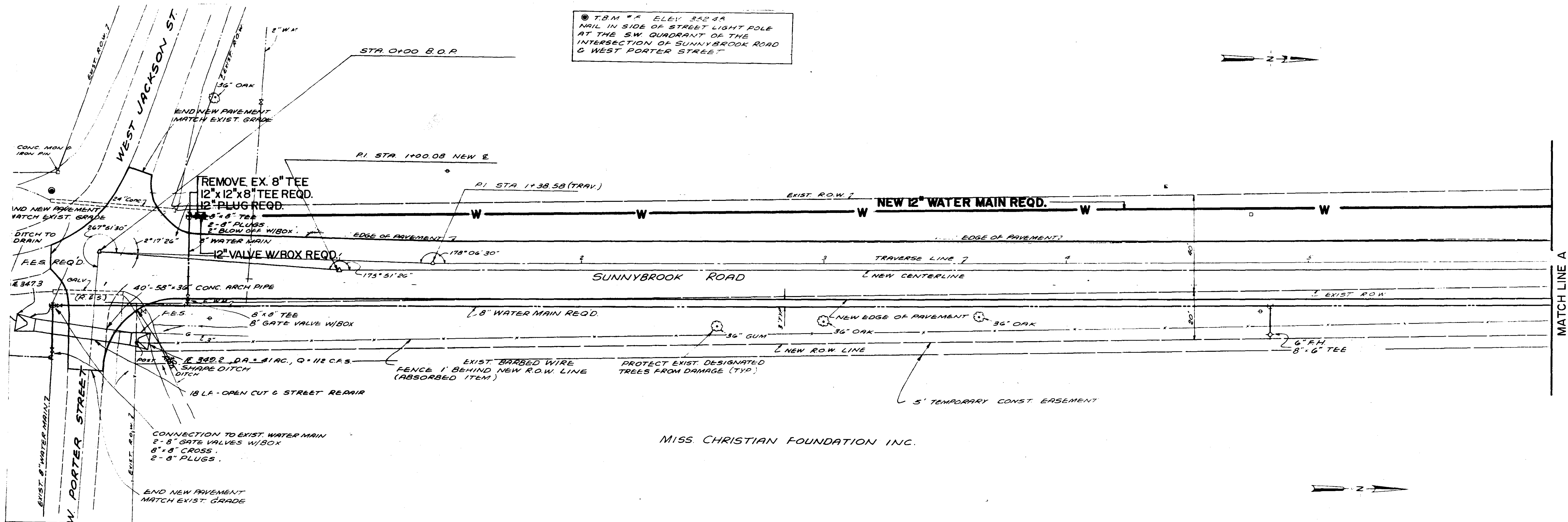
VICINITY MAP

INDEX TO DRAWINGS

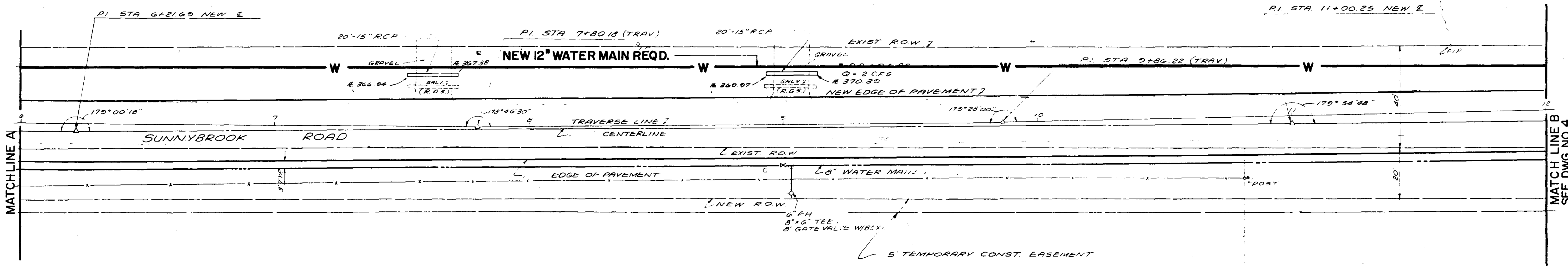
TITLE	DWG. NO.
COVER SHEET	1
GENERAL NOTES, VICINITY MAP, INDEX TO DRAWINGS	2
PLAN SHEET	3
PLAN SHEET	4
DETAIL SHEET	5

SUNNYBROOK ROAD		
WATER LINE IMPROVEMENTS		
SCALE NONE	APPROVED BY SCV	DRAWN BY BRM
DATE 12/7/90	REVISED	
CITY OF RIDGELAND, MS.		
GENERAL NOTES, INDEX, VICINITY		DRAWING NUMBER 2 of 5

● T.B.M. #1 ELEV. 352.44
 NAIL IN SIDE OF STREET LIGHT POLE
 AT THE SW QUADRANT OF THE
 INTERSECTION OF SUNNYBROOK ROAD
 & WEST PORTER STREET



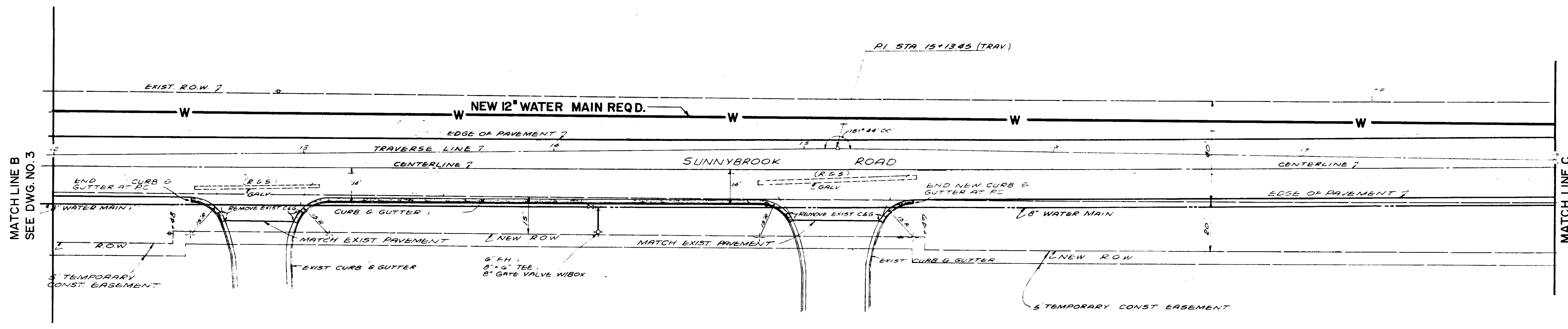
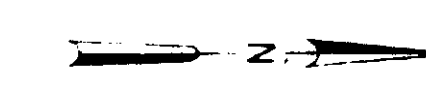
MISS. CHRISTIAN FOUNDATION INC.



MISS. CHRISTIAN FOUNDATION INC.

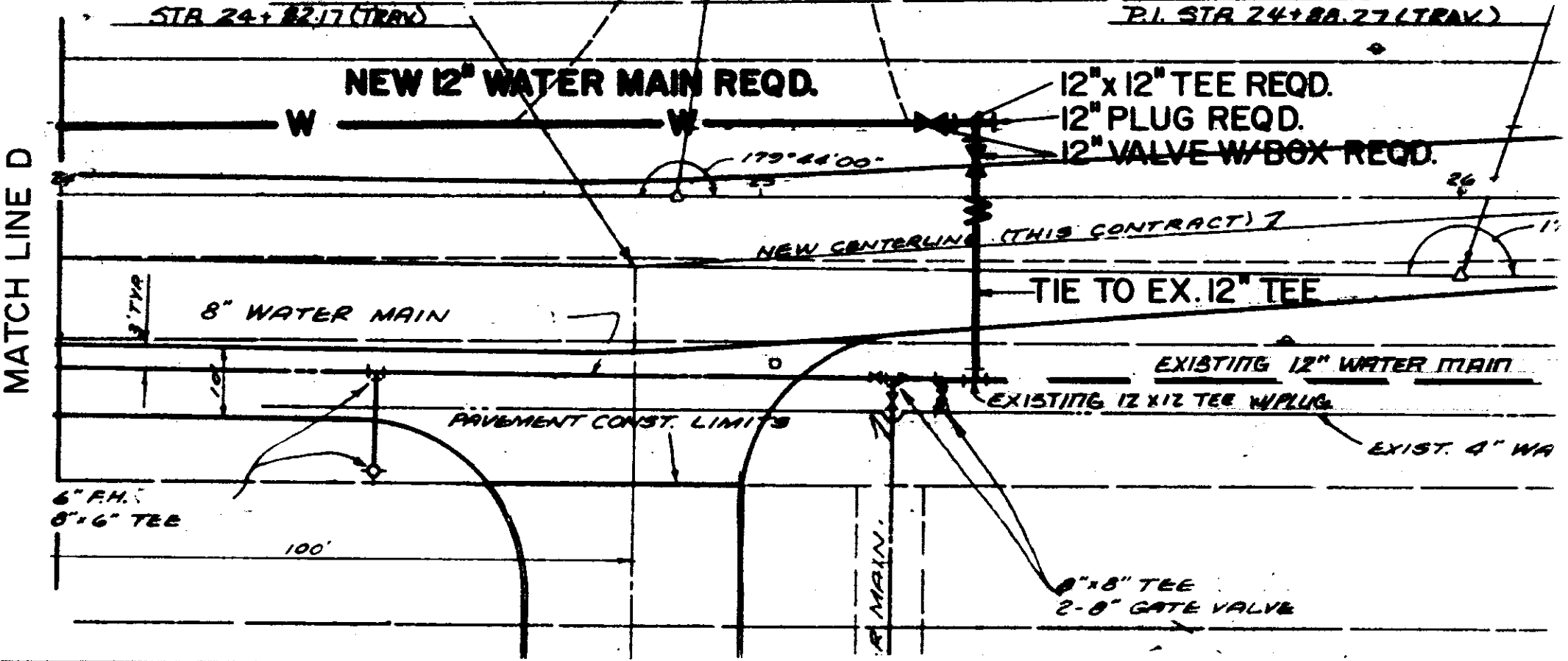
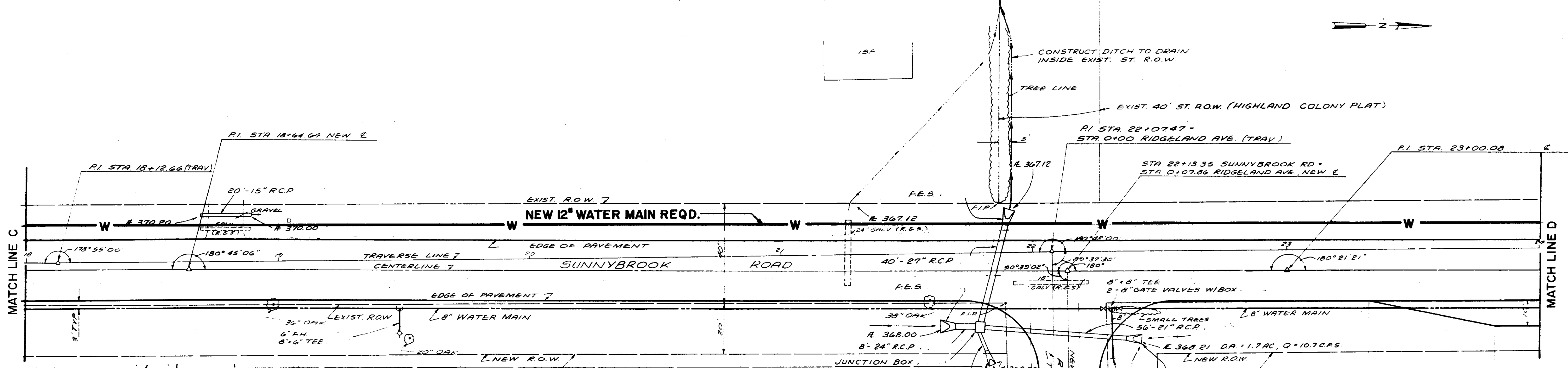
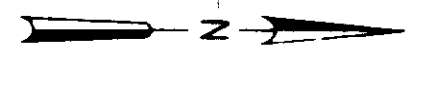
SUNNYBROOK CHILDRENS HOME

SUNNYBROOK ROAD			
WATER LINE IMPROVEMENTS			
SCALE 1"=20'	APPROVED BY SCV	DRAWN BY BRM	REVISIONS
DATE 12/7/90			
CITY OF RIDGELAND, MS.			
PLAN	DRAWING NUMBER		3 of 5



© T.B.M. # 6 ELEV 381.28
 NAIL IN SIDE OF POWER POLE 100' EAST
 OF THE INTERSECTION OF SUNNYBROOK ROAD
 AND STREET TO SUNNYBROOK SCHOOL AND
 30' SOUTH OF THE E OF STREET.

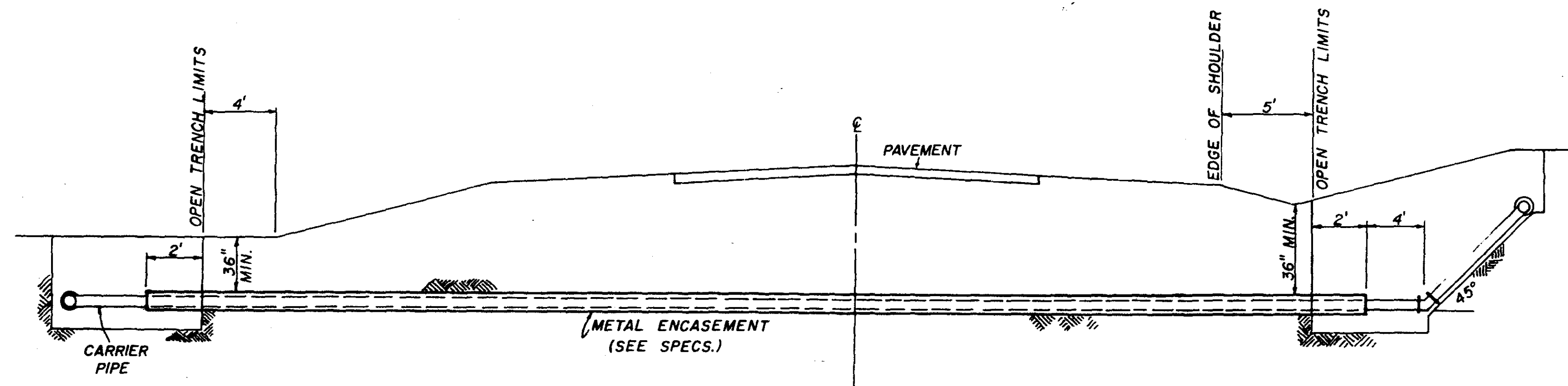
SUNNYBROOK
 CHILDRENS
 HOME



SUNNYBROOK CHILDRENS HOME

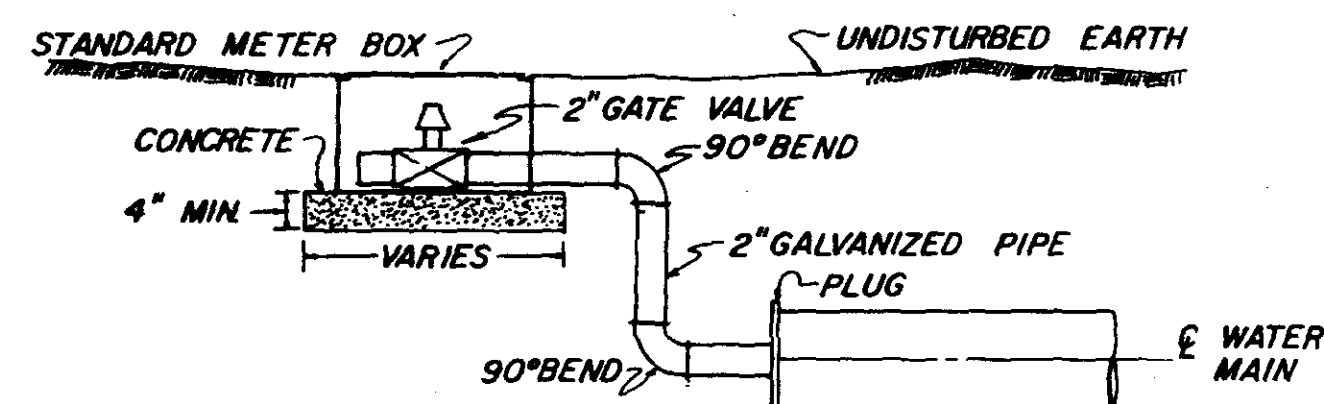
HOLMES JUNIOR COLLEGE

SUNNYBROOK ROAD WATER LINE IMPROVEMENTS			
SCALE 1"=20'	APPROVED BY SCV	DRAWN BY BRM	
DATE 12/7/90		REVISED	
CITY OF RIDGELAND, MS.			
PLAN		DRAWING NUMBER 4 of 5	

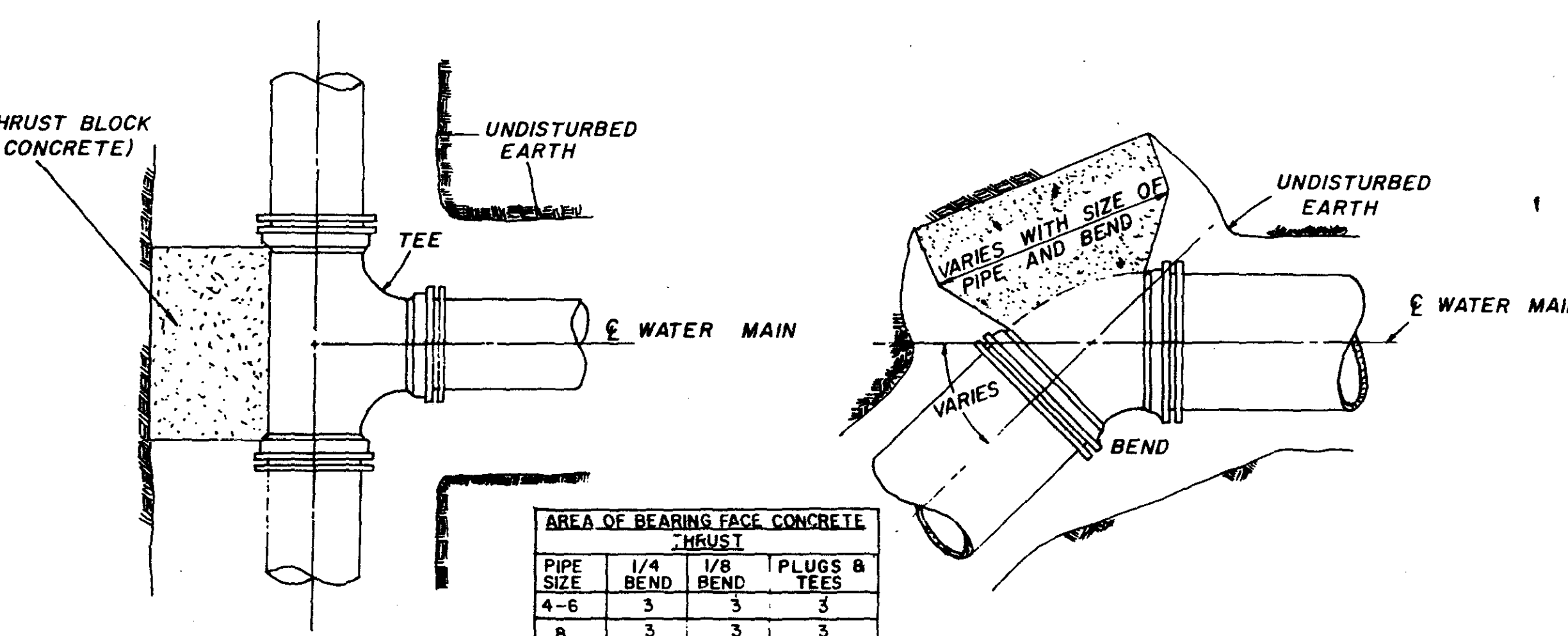


TYPICAL CASED CROSSING

NOTE: COMPENSATION FOR CONCRETE THRUST BLOCKS SHALL BE INCLUDED IN THE UNIT PRICE BID FOR VALVES, FIRE HYDRANTS AND FITTINGS.



TYPICAL 2" BLOW-OFF DETAIL

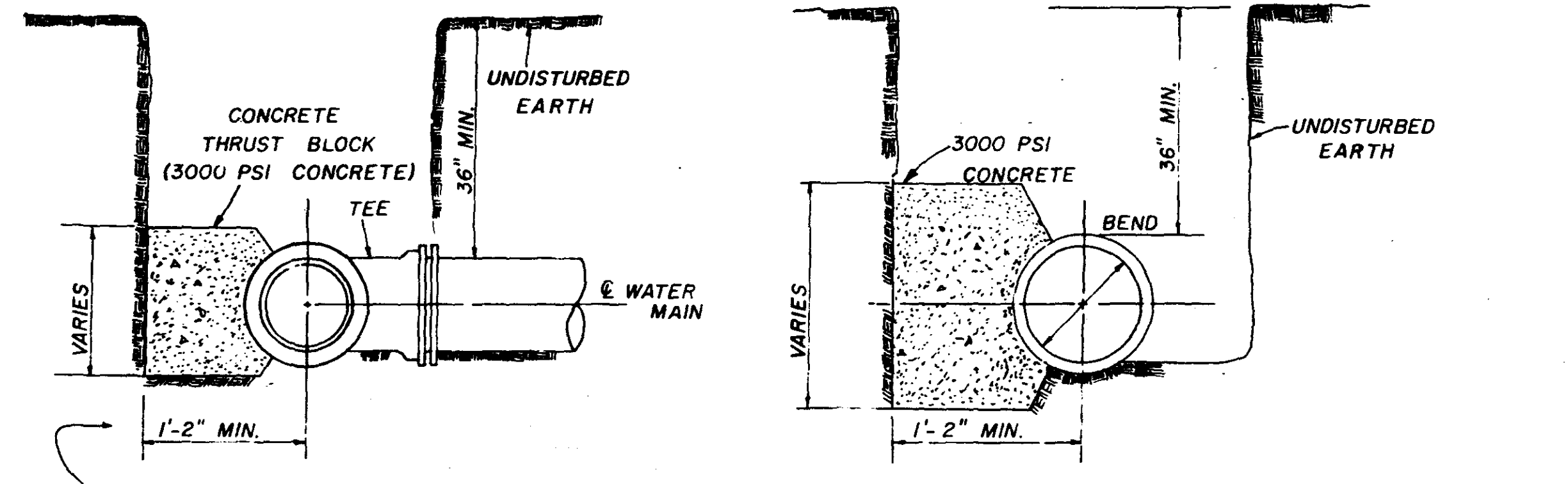


PLAN

PLAN

PIPE SIZE	AREA OF BEARING FACE CONCRETE THRUST		PLUGS & TEES
	1/4 BEND	1/8 BEND	
4-6	3	3	3
8	3	3	3
10	4	3	2
12	6	3	4
16	11	4	7

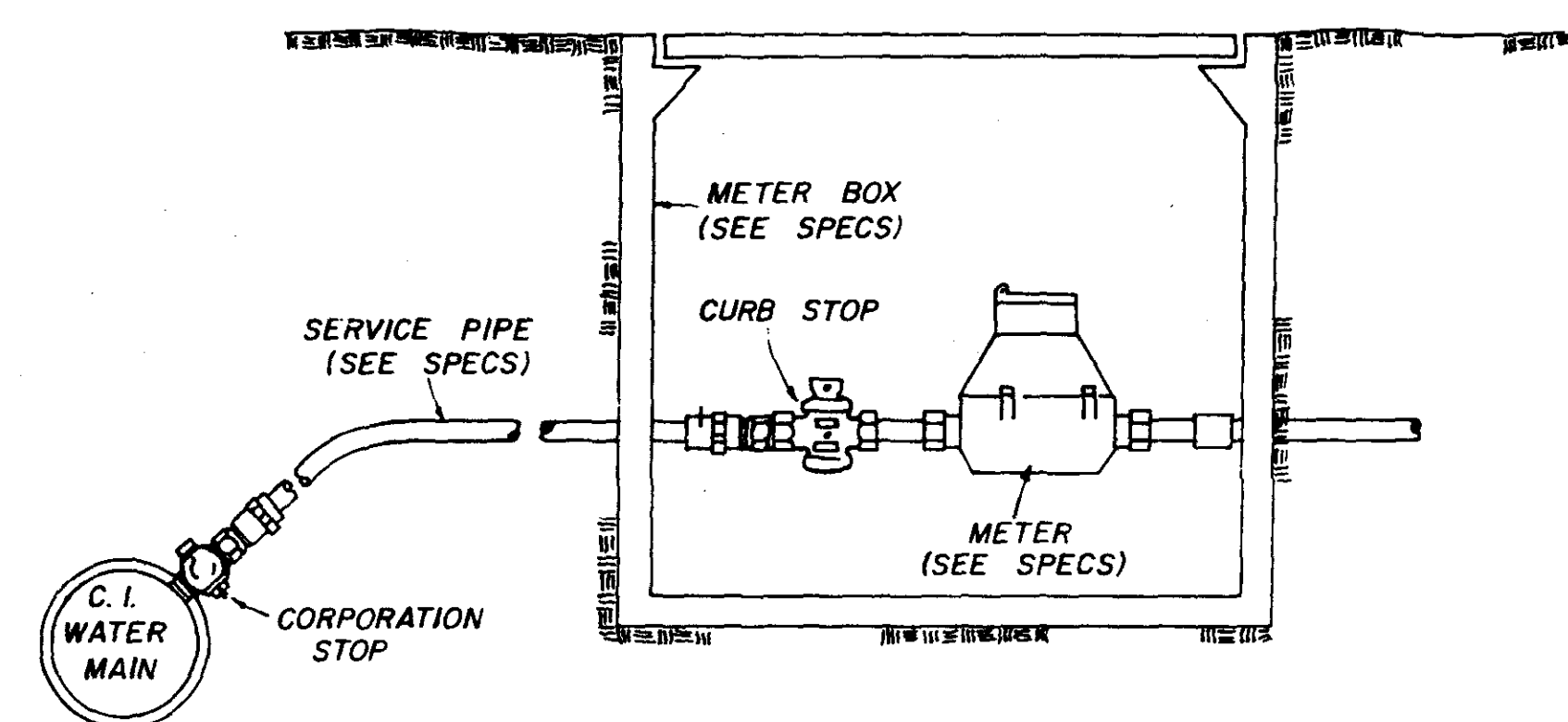
NOTE: AREA OF BEARING FACE IN SQUARE FEET.



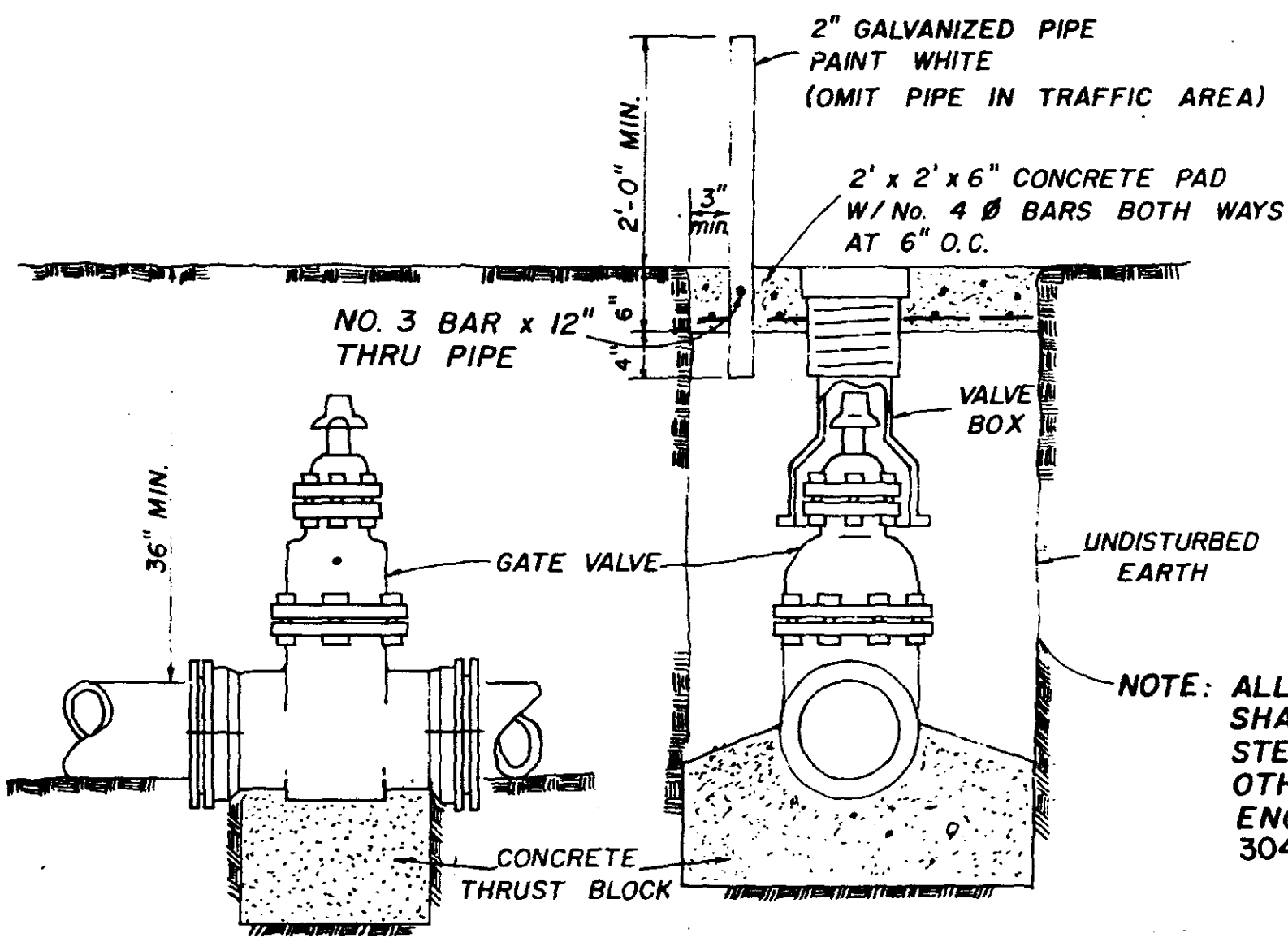
SECTION

SECTION

BLOCKING DETAILS FOR TEES & BENDS



TYPICAL SERVICE ASSEMBLY

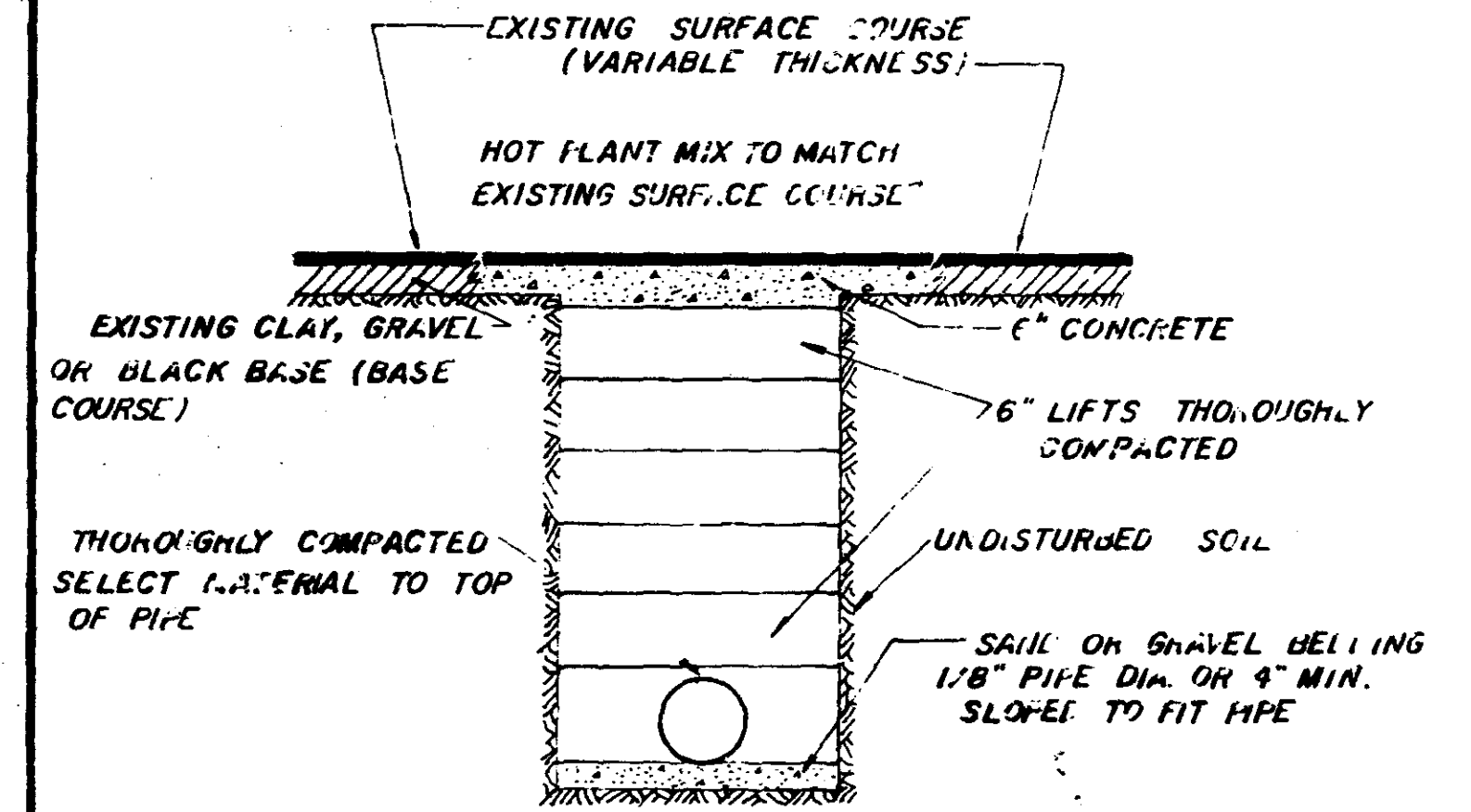
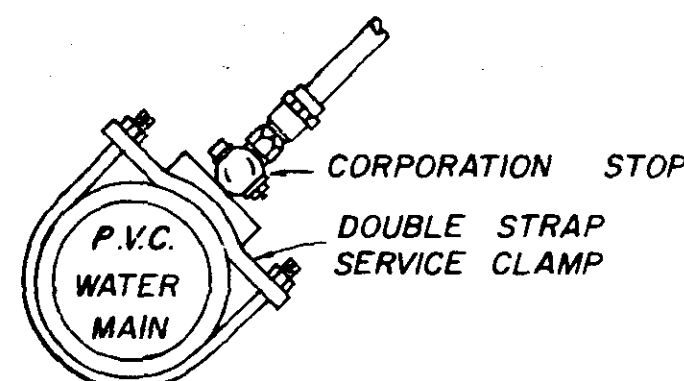


ELEVATION

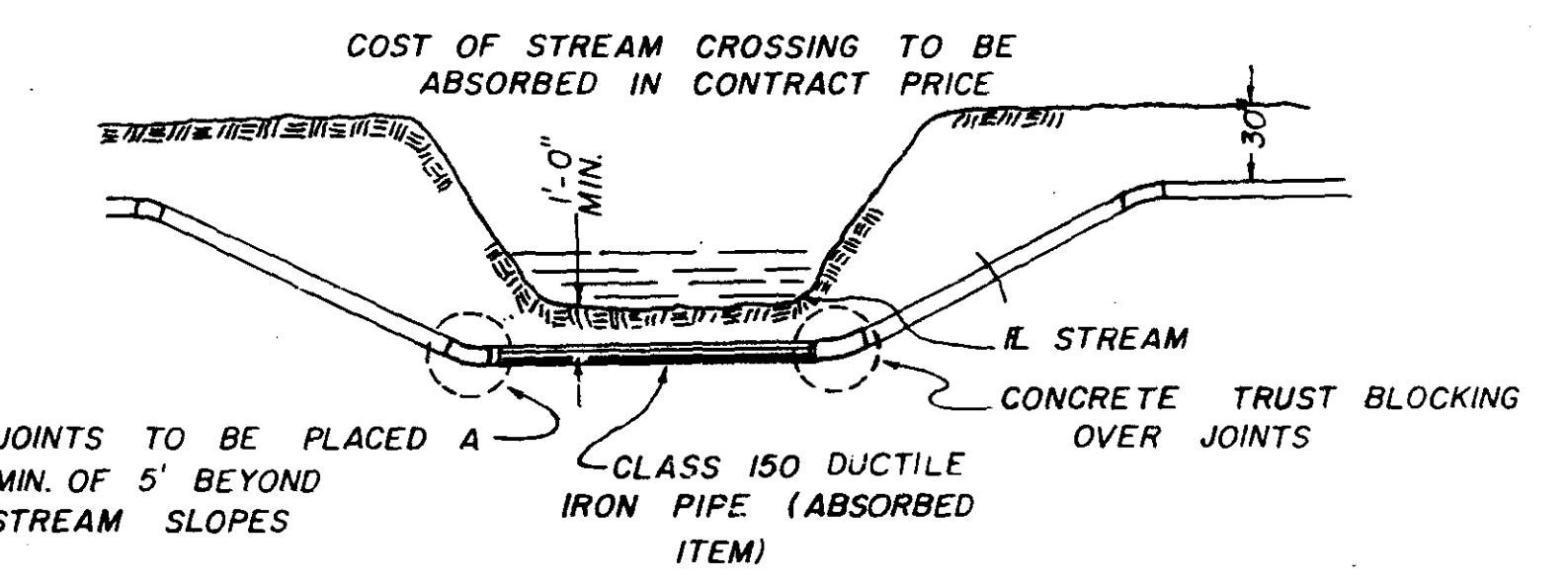
SECTION

TYPICAL VALVE & BOX

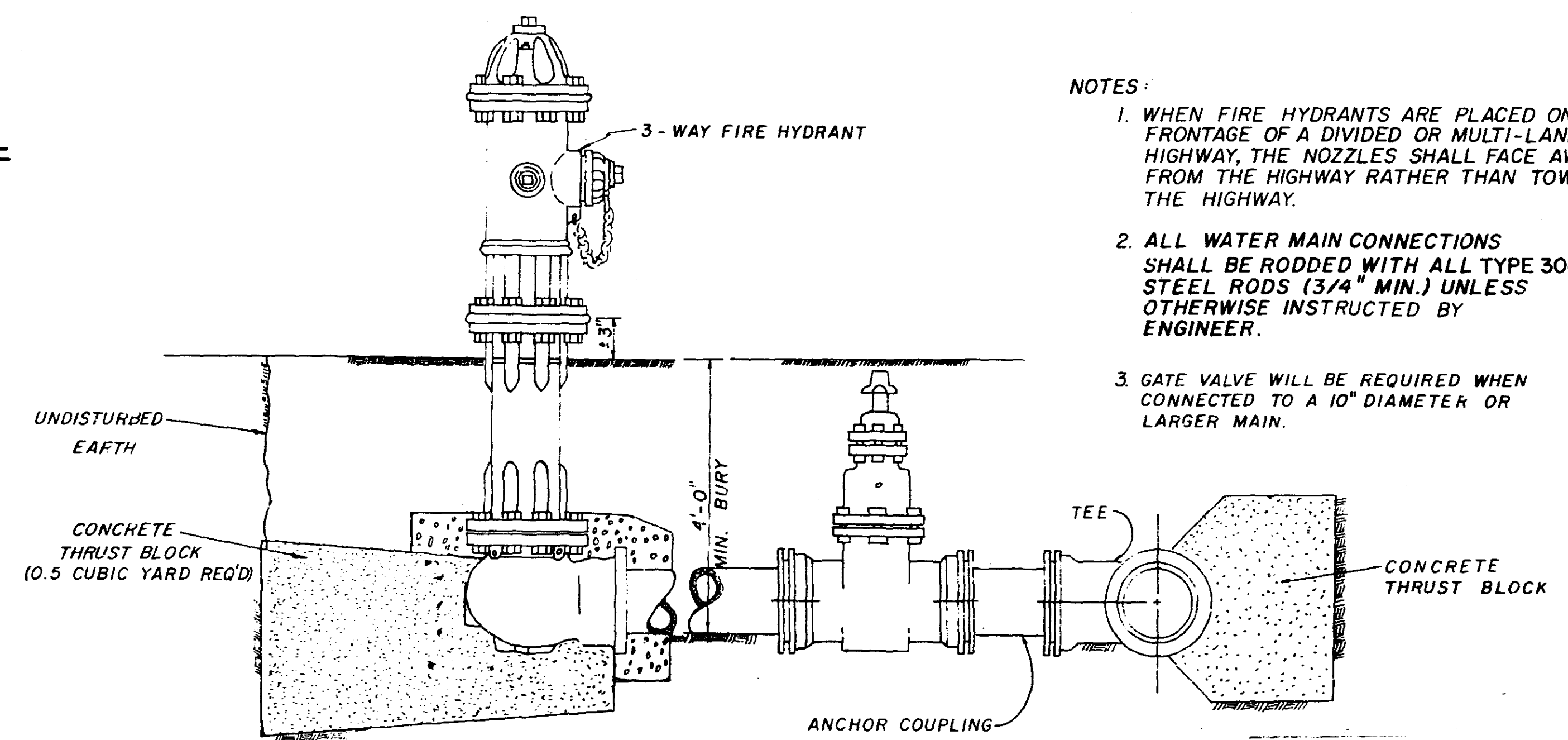
NOTE: ALL WATER MAIN CONNECTIONS SHALL BE RODDED WITH ALL STEEL RODS (3/4" MIN.) UNLESS OTHERWISE INSTRUCTED BY ENGINEER. (RODS SHALL BE TYPE 304 STAINLESS STEEL)



STREET REPAIR OF OPEN CUT



TYPICAL STREAM CROSSING

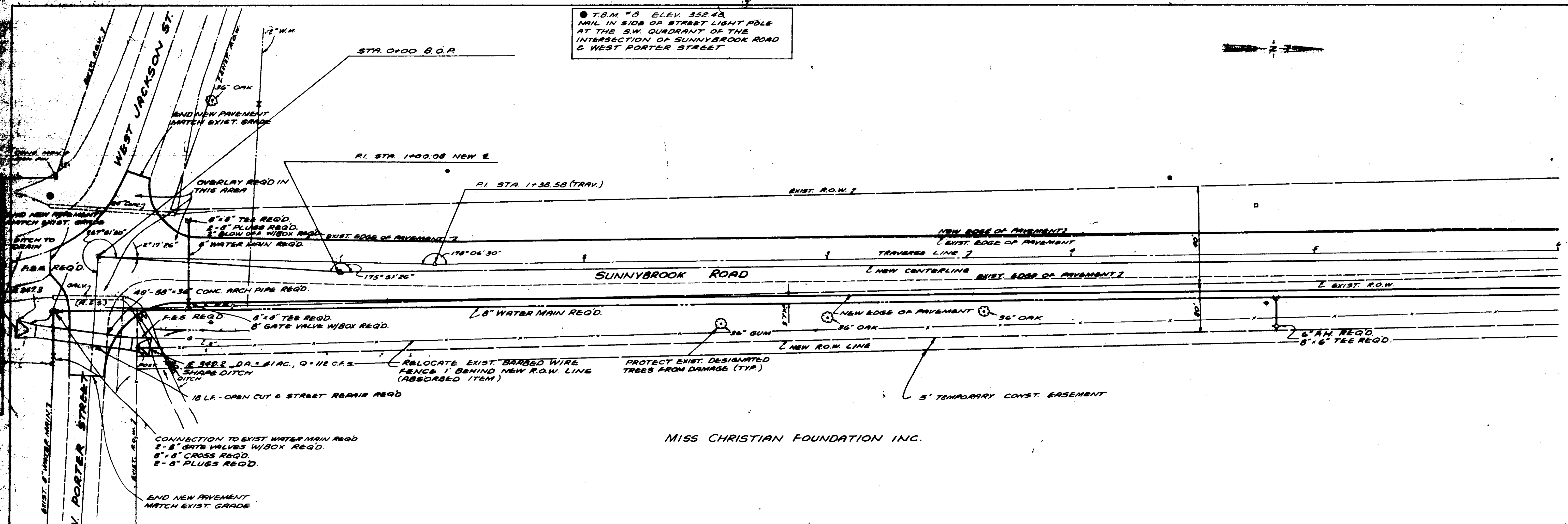


TYPICAL FIRE HYDRANT

- NOTES:
1. WHEN FIRE HYDRANTS ARE PLACED ON THE FRONTAGE OF A DIVIDED OR MULTI-LANE HIGHWAY, THE NOZZLES SHALL FACE AWAY FROM THE HIGHWAY RATHER THAN TOWARD THE HIGHWAY.
 2. ALL WATER MAIN CONNECTIONS SHALL BE RODDED WITH ALL TYPE 304 STAINLESS STEEL RODS (3/4" MIN.) UNLESS OTHERWISE INSTRUCTED BY ENGINEER.
 3. GATE VALVE WILL BE REQUIRED WHEN CONNECTED TO A 10" DIAMETER OR LARGER MAIN.

SUNNYBROOK ROAD
 WATER LINE IMPROVEMENTS
 SCALE: NOTED | APPROVED BY: | DRAWN BY: BRM
 12/7/90 | 12/7/90 | REVISED:
 CITY OF RIDGELAND, MS.
 DETAILS | DRAWING NUMBER 5 of 5

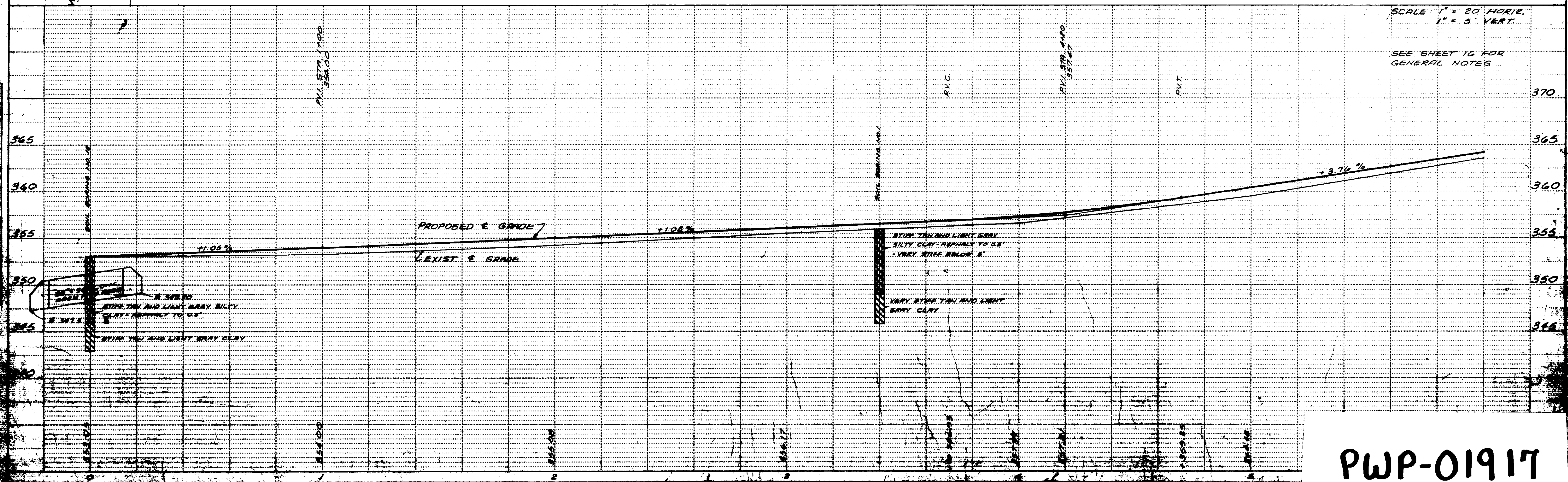
• T.B.M. # 6 ELEV. 352.42
 NAIL IN SIDE OF STREET LIGHT POLE
 AT THE SW QUADRANT OF THE
 INTERSECTION OF SUNNYBROOK ROAD
 & WEST PORTER STREET



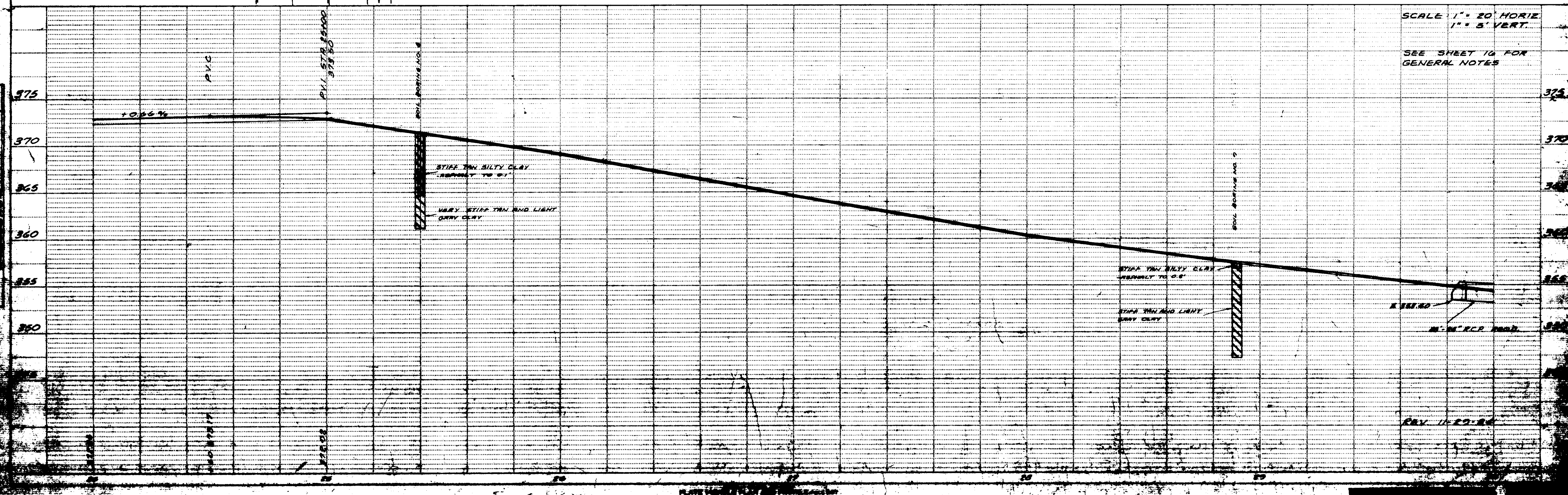
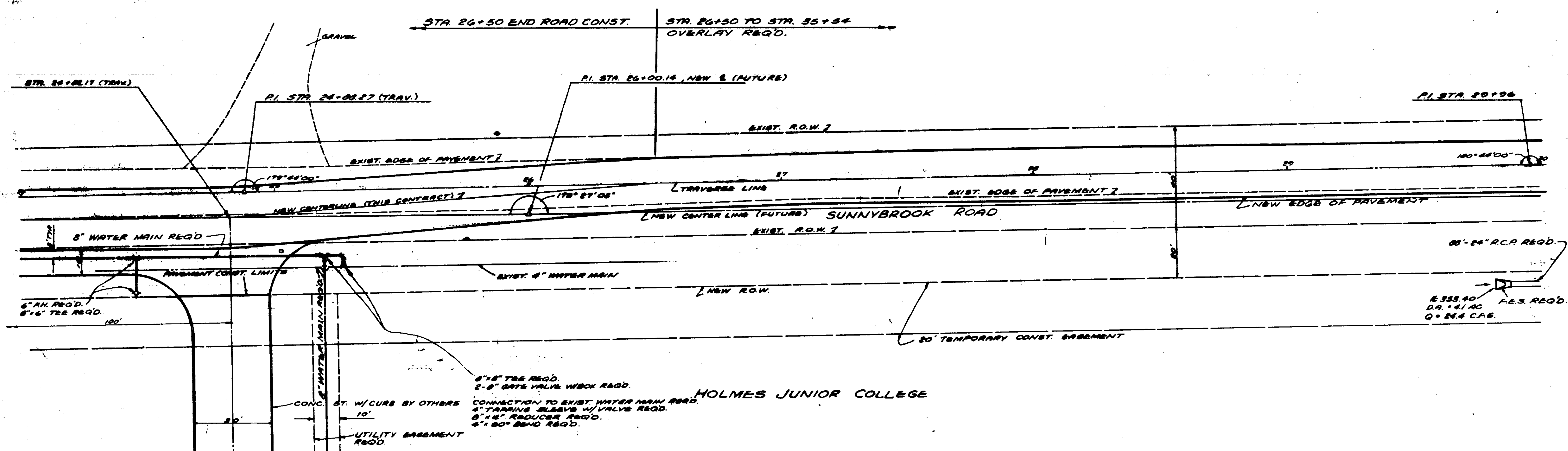
MISS. CHRISTIAN FOUNDATION INC.

SCALE: 1" = 20' HORIZ.
 1" = 5' VERT.

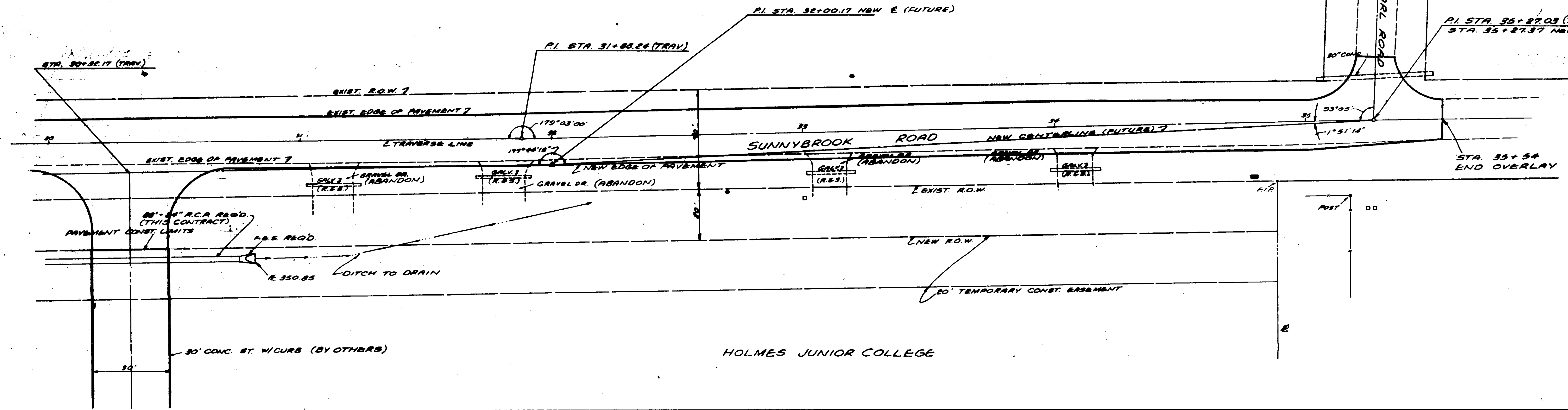
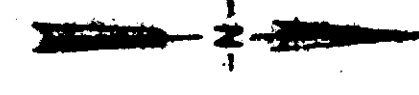
SEE SHEET 16 FOR
 GENERAL NOTES



PWP-01917

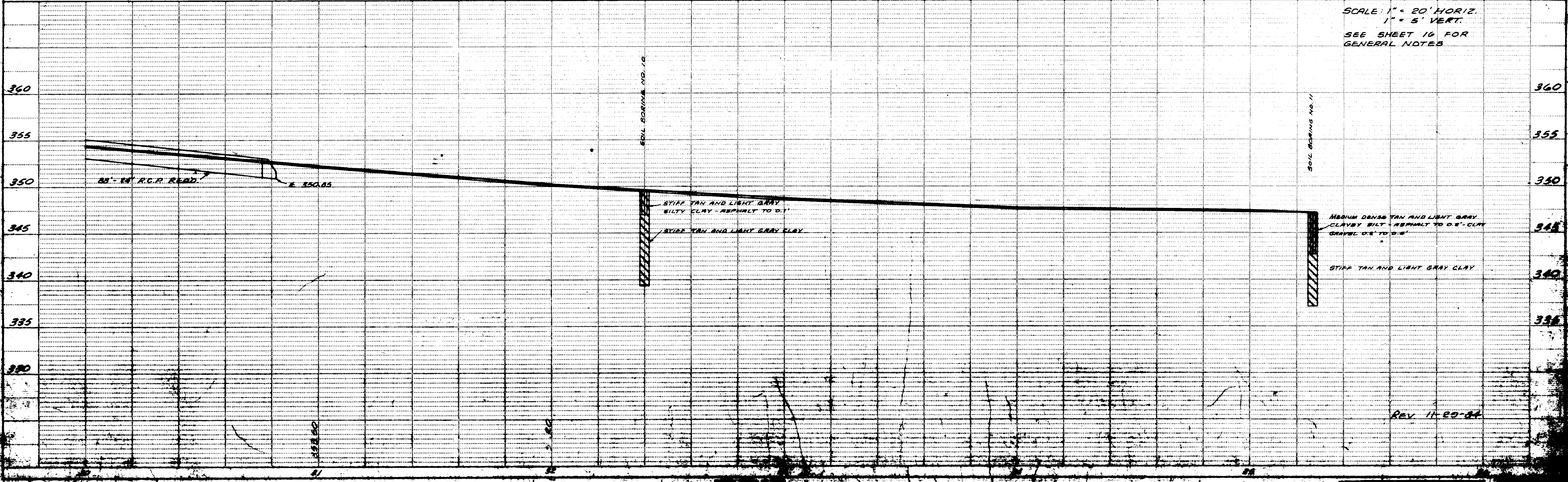


T.B.M. # 5 ELEV. 347.58
 NAIL IN SIDE OF 36" DOUBLE LOCUST
 TREE 100' WEST ALONG CARL RD.
 FROM THE INTERSECTION WITH
 SUNNYBROOK RD. AND 15' NORTH OF
 E OF CARL ROAD.



HOLMES JUNIOR COLLEGE

SCALE: 1" = 20' HORIZ.
 1" = 5' VERT.
 SEE SHEET 16 FOR
 GENERAL NOTES



REV. 11-29-52