

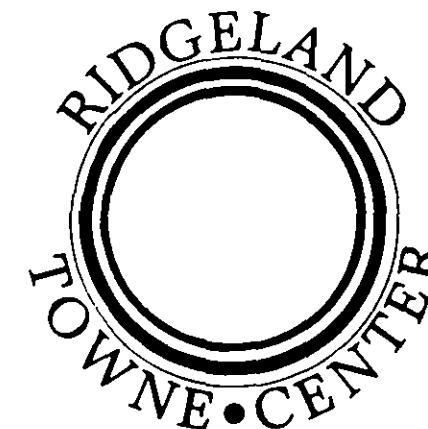
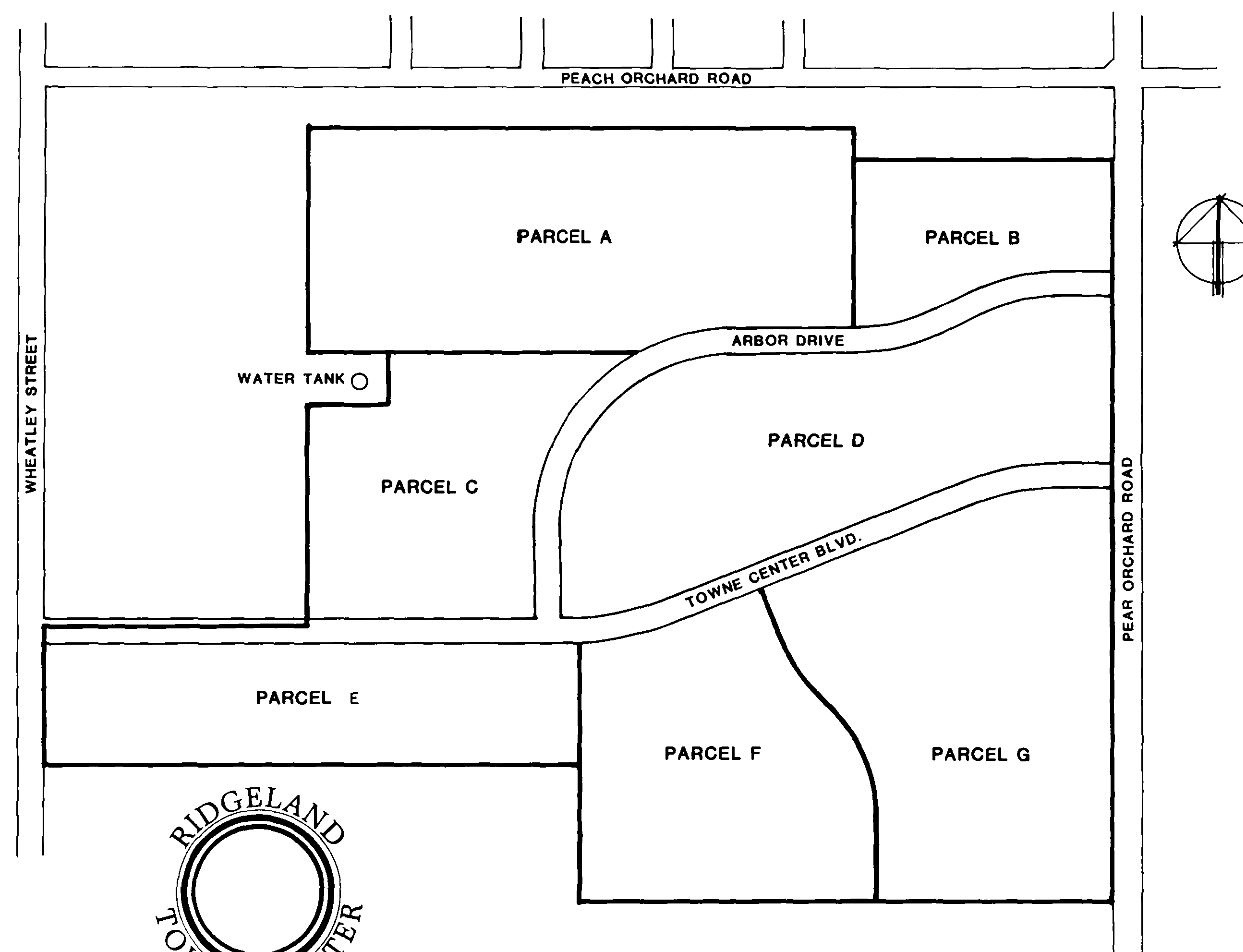
RIDGELAND TOWNE CENTER

CITY OF RIDGELAND, MADISON COUNTY

MISSISSIPPI

CONSTRUCTION PLANS FOR STREETS, STORM DRAINAGE AND MAJOR UTILITIES

1985



ARCHITECT



foil-wyatt-mckewen
architects & planners

1510 north State Street, Suite 400, Jackson, Mississippi 39202

OWNERS:

NORTH PARK JOINT VENTURE
and
LARRY EDWARDS, ET AL

ENGINEER:

Rutledge and Associates, Inc.

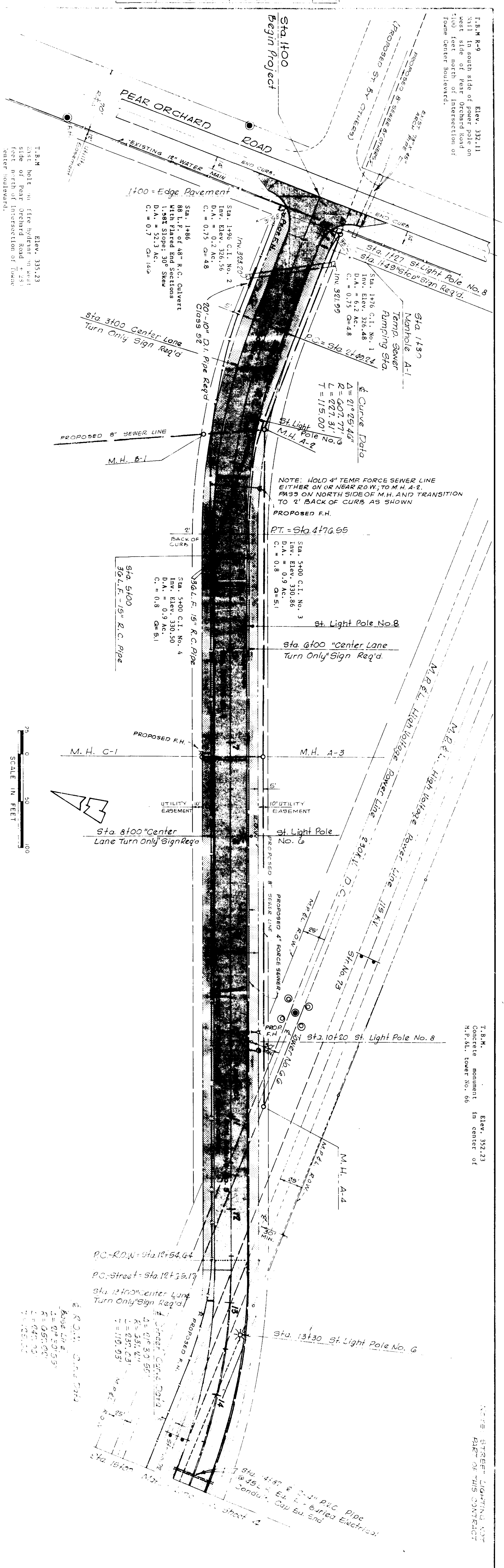
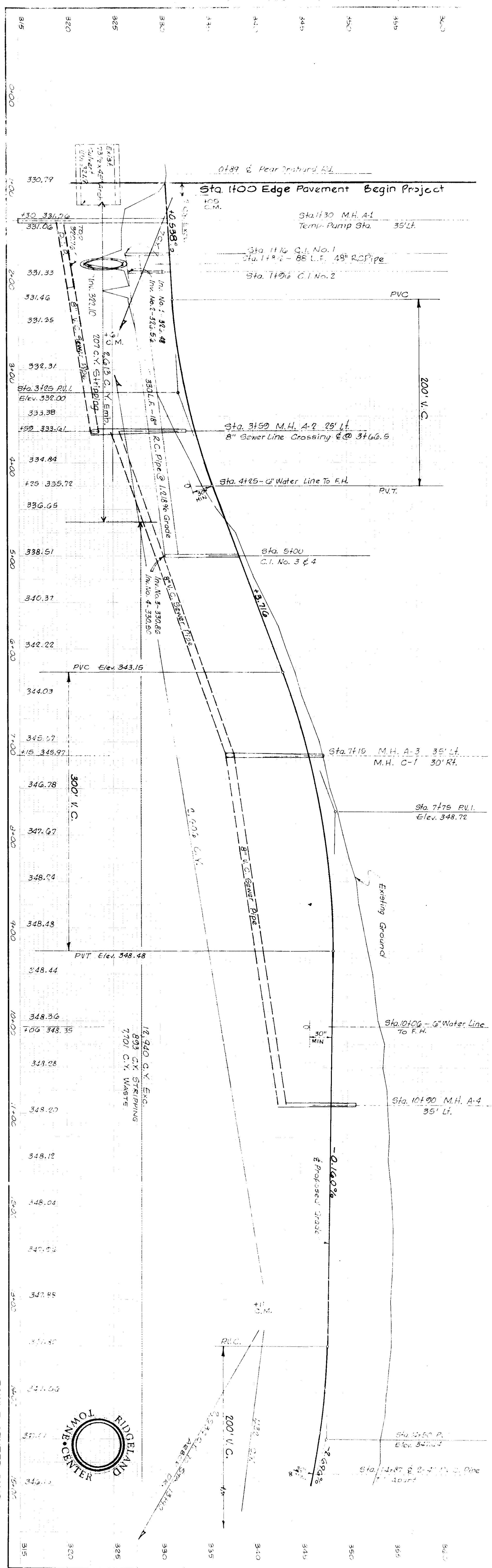
CONSULTING ENGINEERS - SURVEYORS

5250 Galaxie Drive • P. O. Box 16469 • Jackson, Mississippi
Telephone (601) 981-2990

PWP-01811

PROF. BY	DATE
BY	DATE

PLAN	SURVEYED	BY	DATE
NO.	NO.		
	ALIGNED	CHECKED	
	BY	DATE	



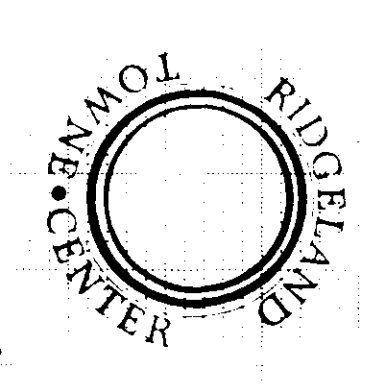
L.B.M. R-9 Elev. 332.11
 1111 to south side of power pole on west side of Pear Orchard Road
 1100 feet north of intersection of Towne Center Boulevard.

NOTE: HOLD 4" TEMP. FORCE SEWER LINE EITHER ON OR NEAR ROW, TO M.H. A-2. PASS ON NORTH SIDE OF M.H. AND TRANSITION TO 2" BACK OF CURB AS SHOWN
 PROPOSED F.H.
 P.T. = Sta. 4176.55

Sta. 5400 C.I. No. 3
 Inv. Elev. 330.85
 D.A. = 0.9 AC.
 C. = 0.8 C=51

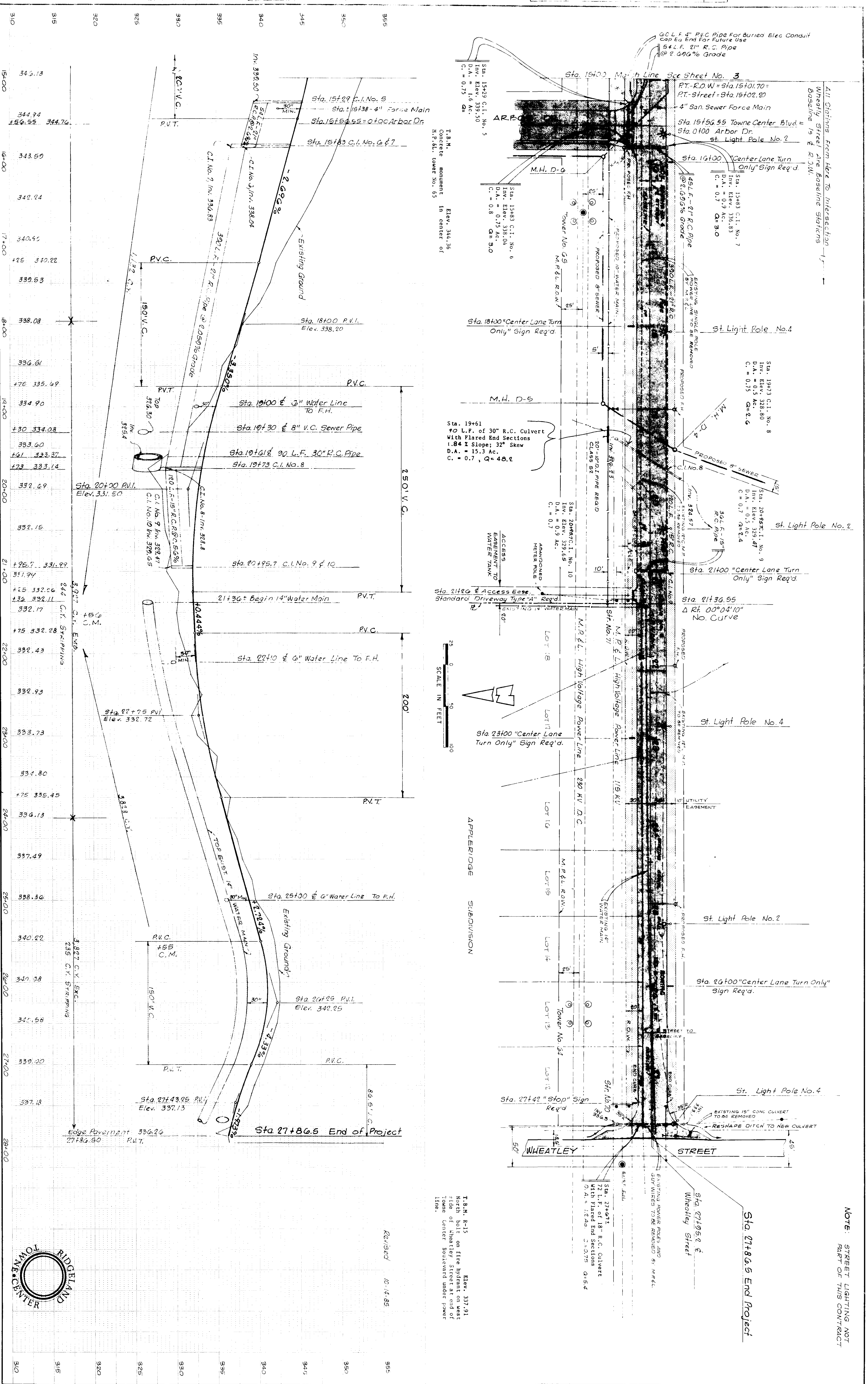
L.B.M. Elev. 332.23
 Concrete monument in center of H.P. St. tower No. 86

NOTE: STREET LIGHTING COST PART OF THIS CONTRACT



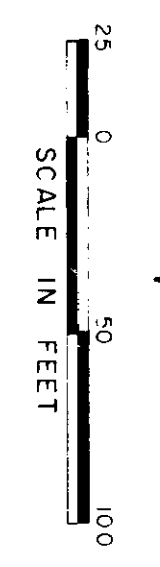
PROFILE		BY	DATE
SURVEYED	PLOTTED		
NOTE BOOK	GRADES CHECKED		
NO	B.M. NOTED		
	STRUCTURE NOTED		

PLAN		BY	DATE
SURVEYED	PLOTTED		
NOTE BOOK	ALIGNMENT CHECKED		
NO	RT OF WAY CHECKED		



All Stations from Here to Intersection
Wheatley Street are Baseline Stations

St. Light Pole No. 4
St. Light Pole No. 2
St. Light Pole No. 4
St. Light Pole No. 2
St. Light Pole No. 4
St. Light Pole No. 2

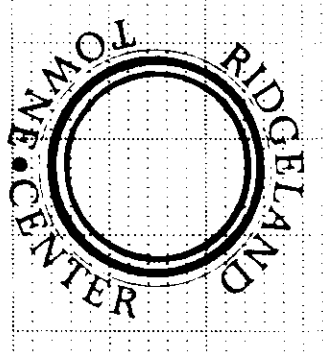


APPLERIDGE SUBDIVISION

T.B.M. R-15
Elev. 337.91
North bolt on fire hydrant on west side of Wheatley Street at end of Towne Center Boulevard under power line.

NOTE: STREET LIGHTING NOT PART OF THIS CONTRACT

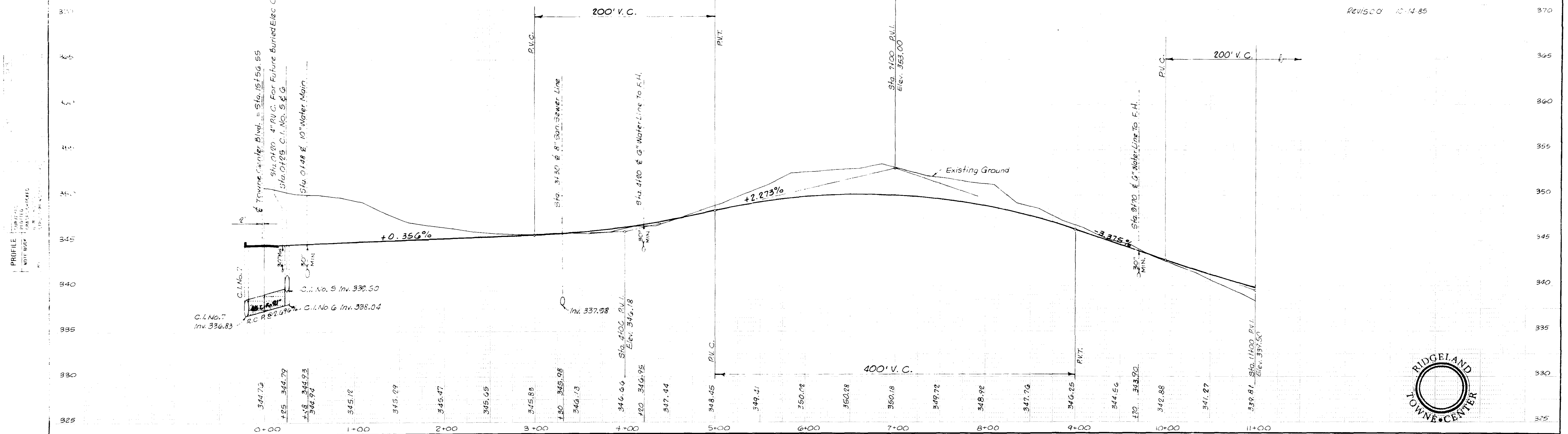
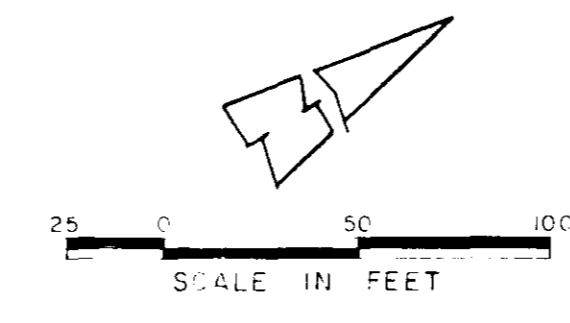
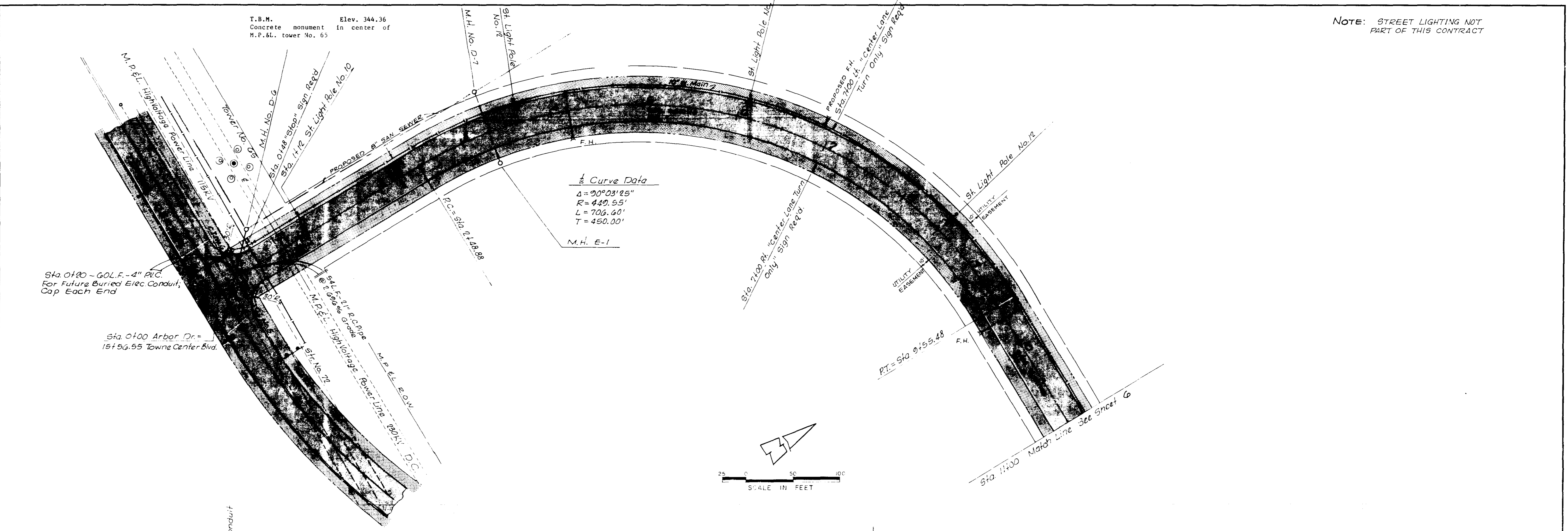
Revised 10-14-85



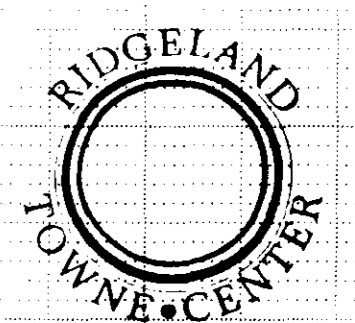
DATE	
BY	
PLAN	DESIGNED BY
	CHECKED BY
	UP WAY CHECKED
	NO.

T.B.M. Elev. 344.36
Concrete monument in center of
M.P.S.L. tower No. 65

NOTE: STREET LIGHTING NOT
PART OF THIS CONTRACT



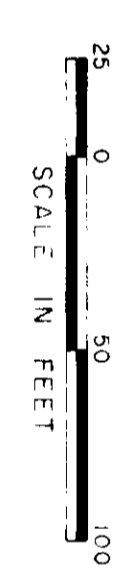
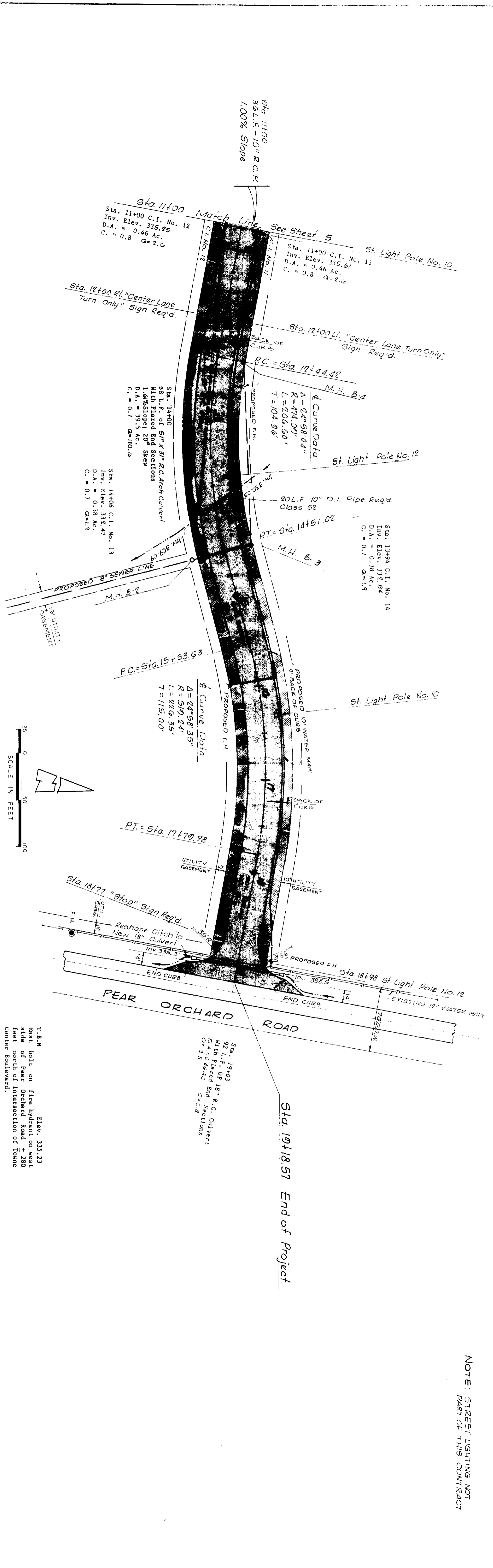
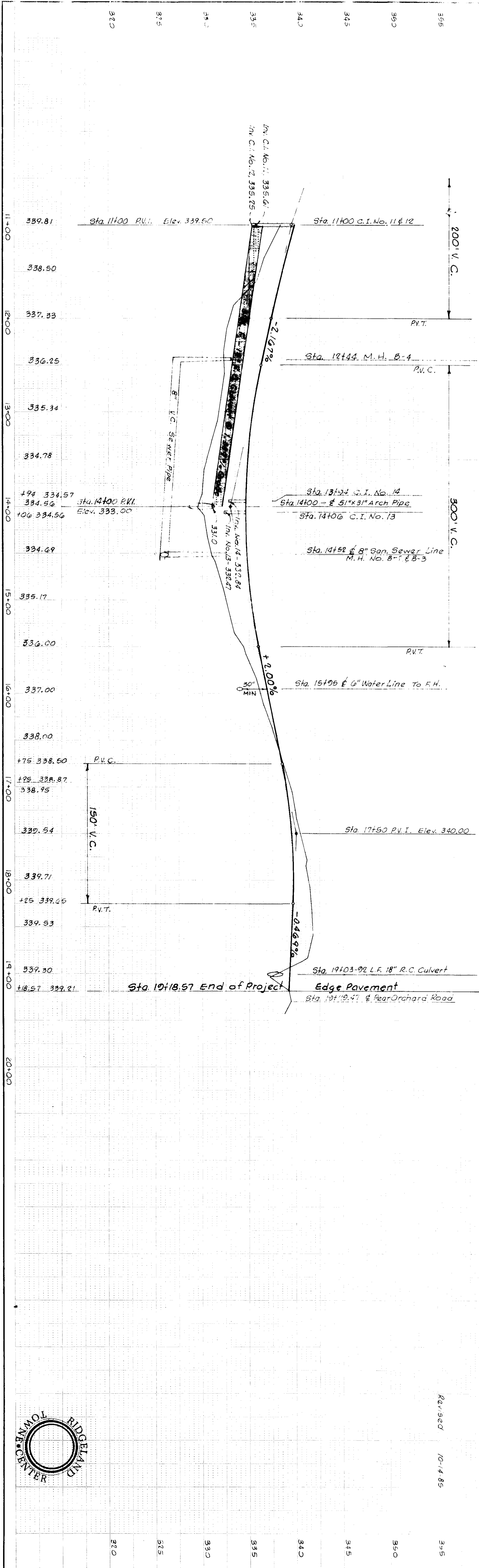
REVISION 10-14-85



ARBOR DRIVE

PROFILE	DATE
NOTE BOOK	
NO.	

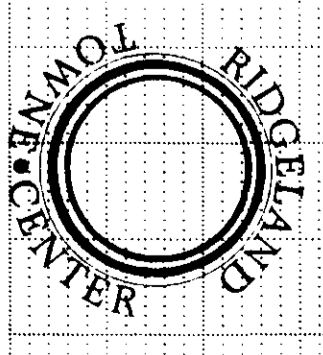
PLAN	DATE
NOTE BOOK	
NO.	

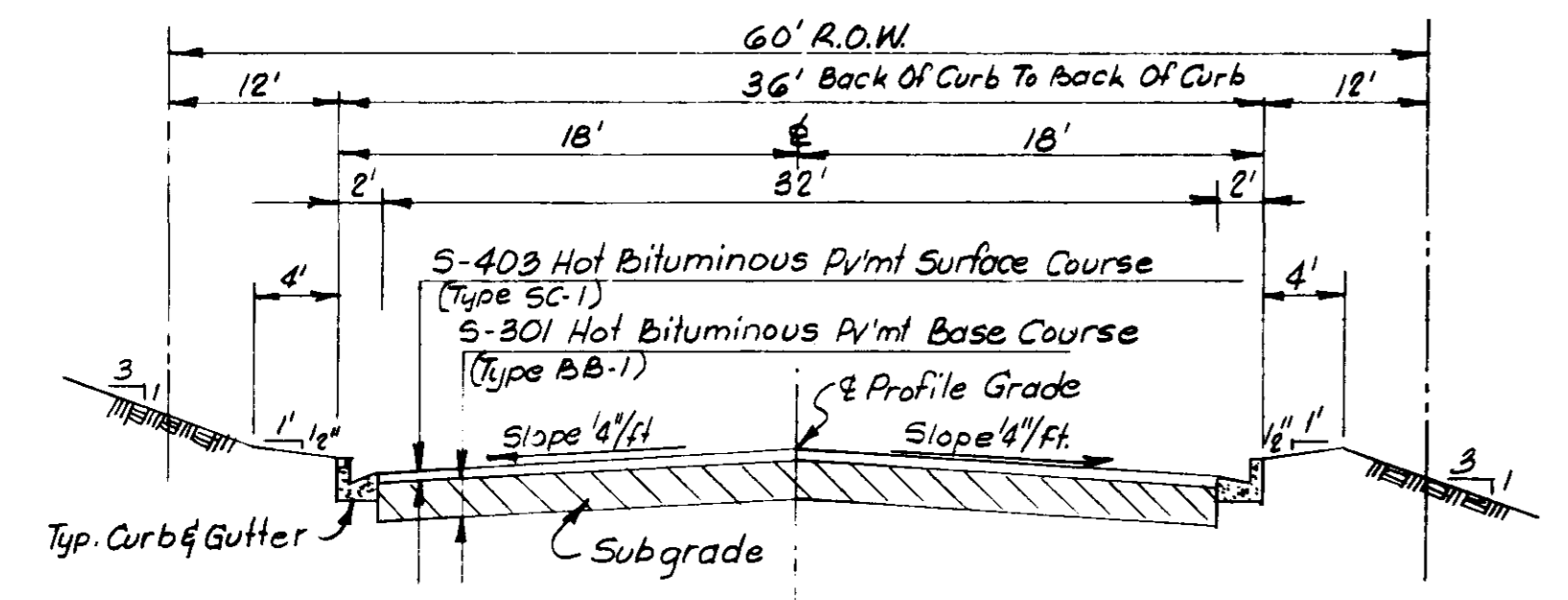


T.B.M. Elev. 335.23
East bolt on fire hydrant on west side of Pear Orchard Road + 280 feet north of intersection of Towne Center Boulevard.

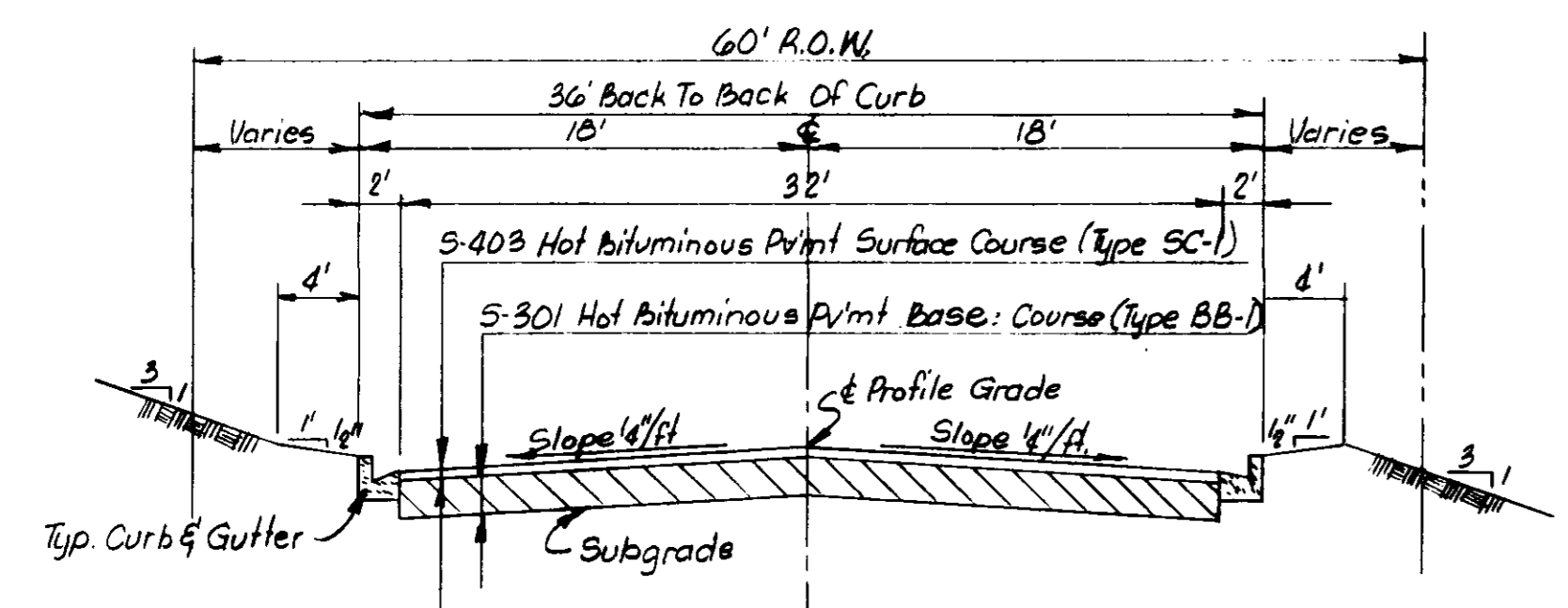
Rev 929 10-14-85

NOTE: STREET LIGHTING NOT PART OF THIS CONTRACT

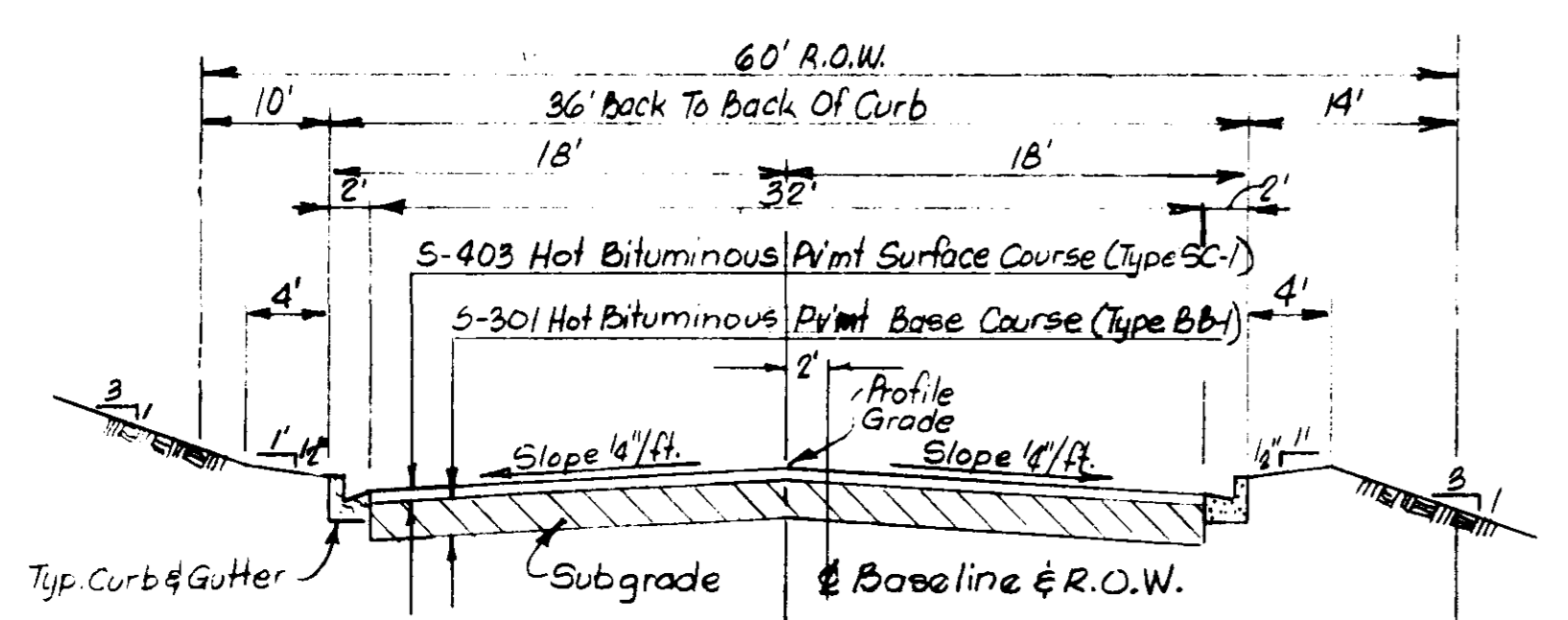




TYPICAL SECTION ARBOR DRIVE & TOWNE CENTER BLVD. STA. 1+00-12+54.64
 Not To Scale

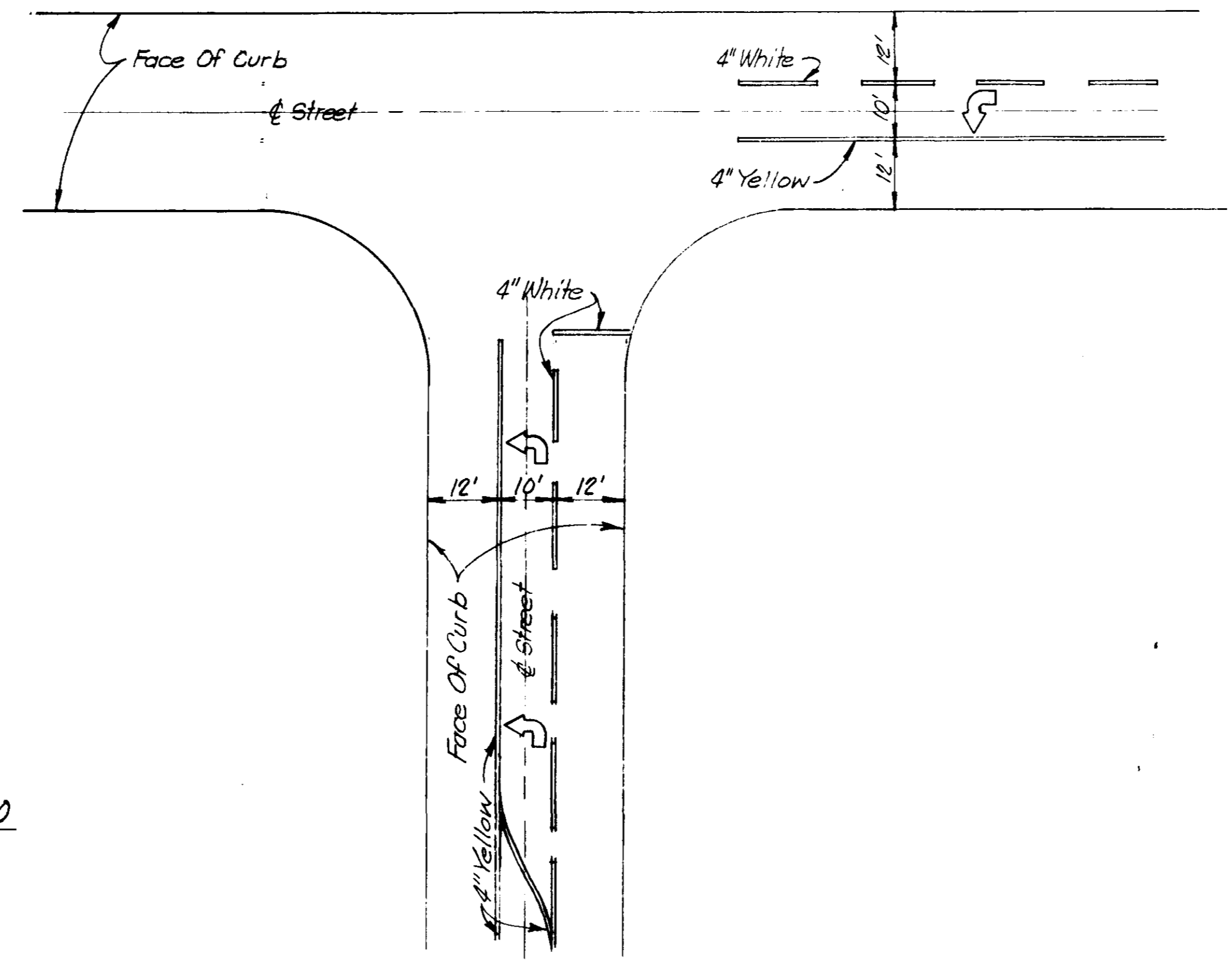


TYPICAL SECTION TOWNE CENTER BLVD. STA. 12+54.64-15+01.70
 Not To Scale

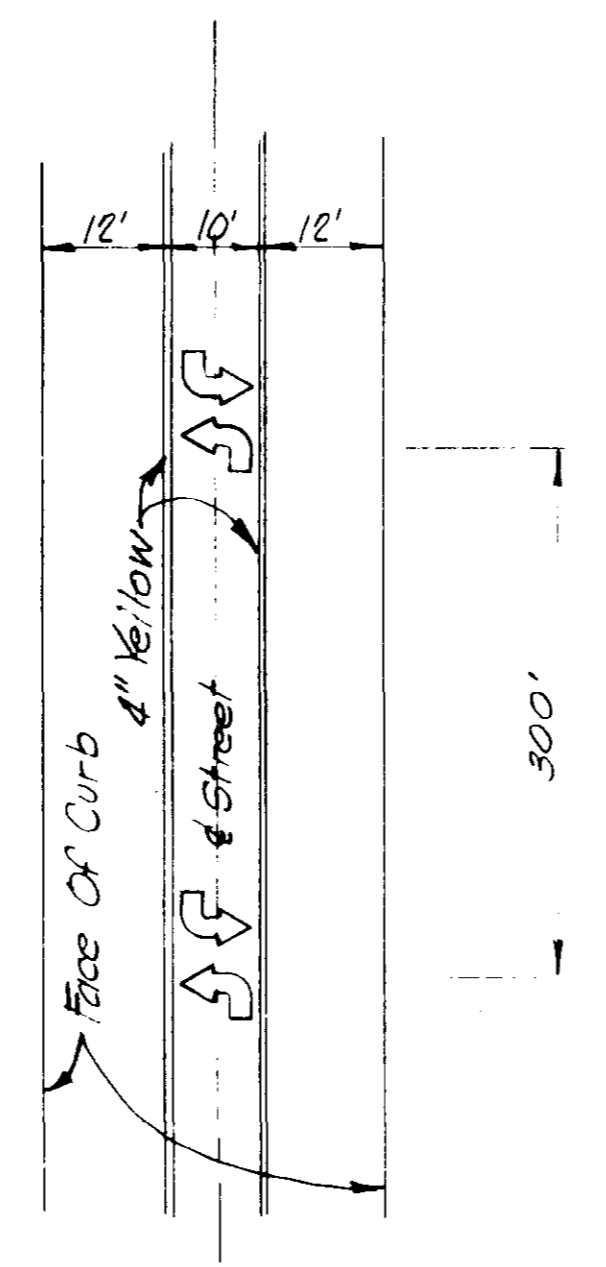


TYPICAL SECTION TOWNE CENTER BLVD.
 STA. 15+01.70 - STA. 27+86.5

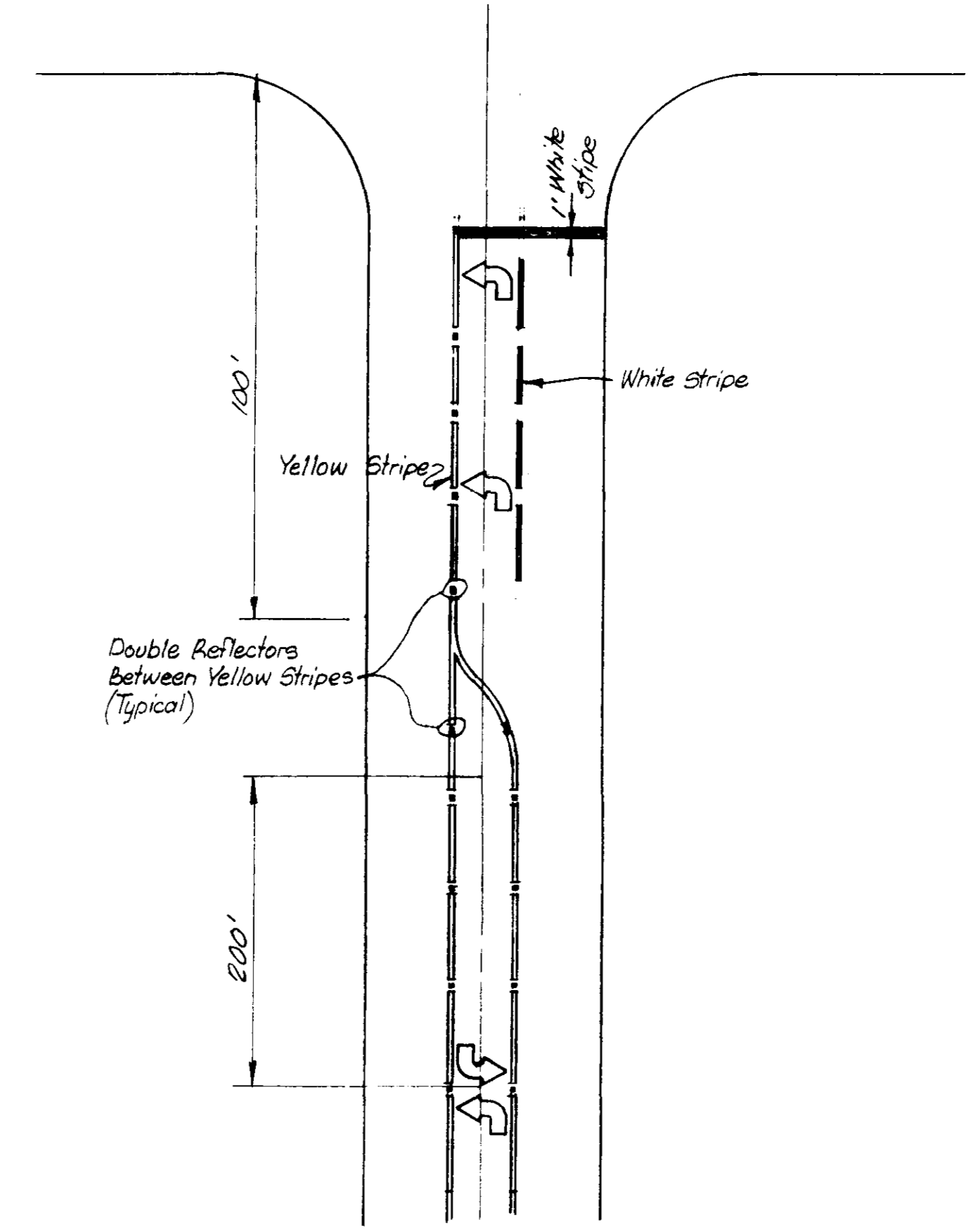
NOTE:
 A Minimum Of Two Feet Of Select Material S-304-D1
 Shall Be Placed In Sections Of Roadway Which Have
 Less Than Two Feet Vertical Clearance Between Finish
 Subgrade Elevation And Yazoo Clay Formations.
 The Two Feet Of Select Material S-304-D1 Shall Be Placed
 From Back Of Curb To Back Of Curb At Full Two Foot Depth
 And Also Conform To Density Requirements And Method
 Of Placement Set Forth In Plan Specifications.



DETAIL OF TEMPORARY PAVING MARKING
 AT STREET INTERSECTIONS



DETAIL OF TEMPORARY PAVING MARKING



DETAIL OF PERMANENT MARKING

RIDGELAND TOWNE CENTER
 RIDGELAND, MADISON COUNTY MISSISSIPPI
 MISCELLANEOUS DETAILS

Rutledge and Associates, Inc.
 CONSULTING ENGINEERS - SURVEYORS
 JACKSON, MS 39236
 P.O. BOX 16469
 TELEPHONE 601/981-2960

DESIGNED
 W. Posey
 DRAWN
 B. Boone
 CHECKED

DATE
 9-85

SHEET 7
 OF 18