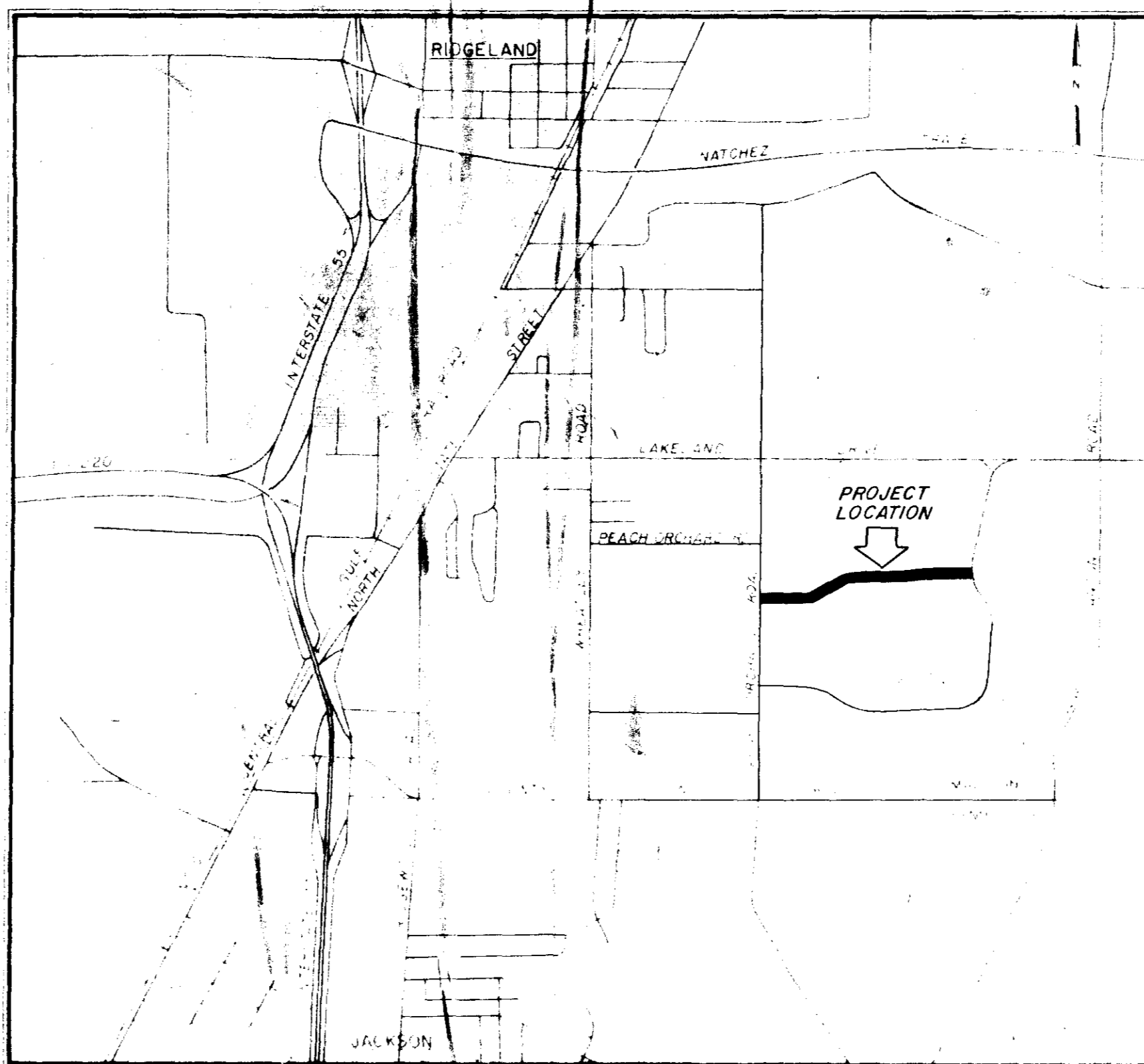


CITY OF RIDGELAND, MISSISSIPPI

SPECIAL ASSESSMENT IMPROVEMENTS PROJECT NO. 2 WATER & STREET FACILITIES

East Town Center



Mayor
Hite Wolcott

Mayor Pro Tem
Raymond McClure

City Clerk
Marcella Cannon

Aldermen
Harvey Carr, Jr.
Don Lindsay
Jack Martin
W. C. McClellan
Raymond McClure

Public Works Superintendent
Horace Ross

AUGUST 1984

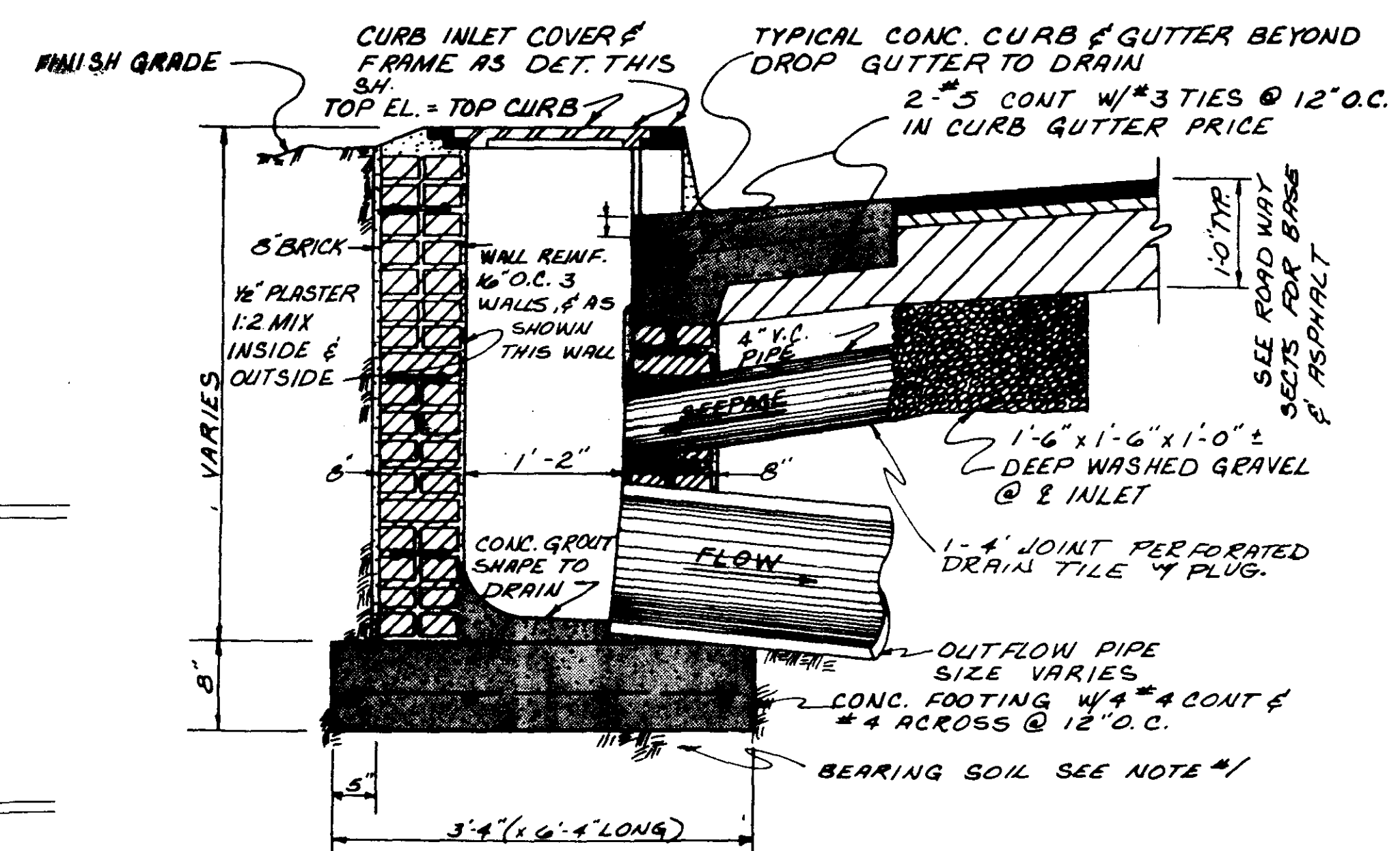
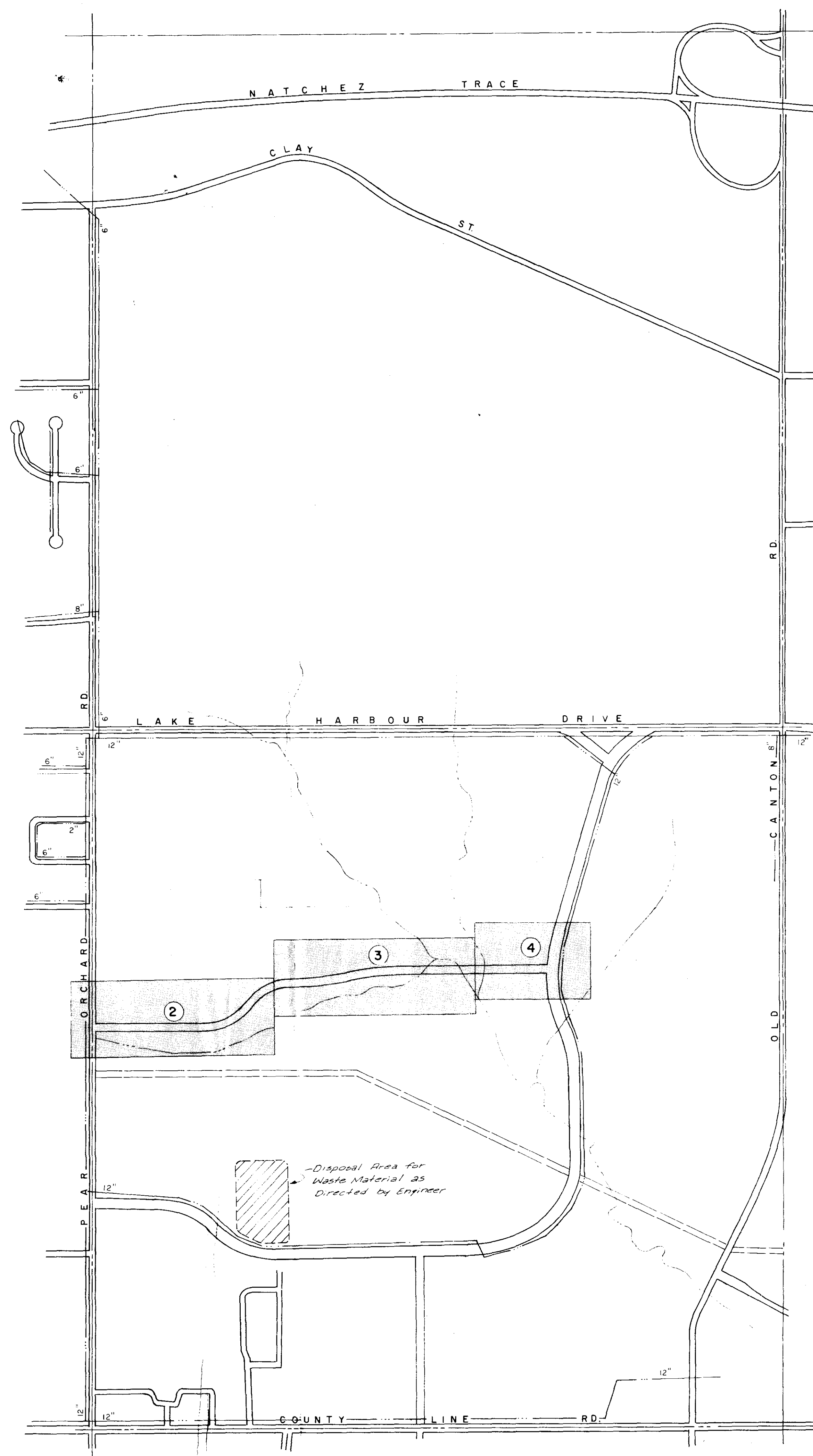
JOE A. WAGGONER
Civil Engineer
Brandon / Jackson, Mississippi

RECORD
DRAWINGS
FEBRUARY 1988

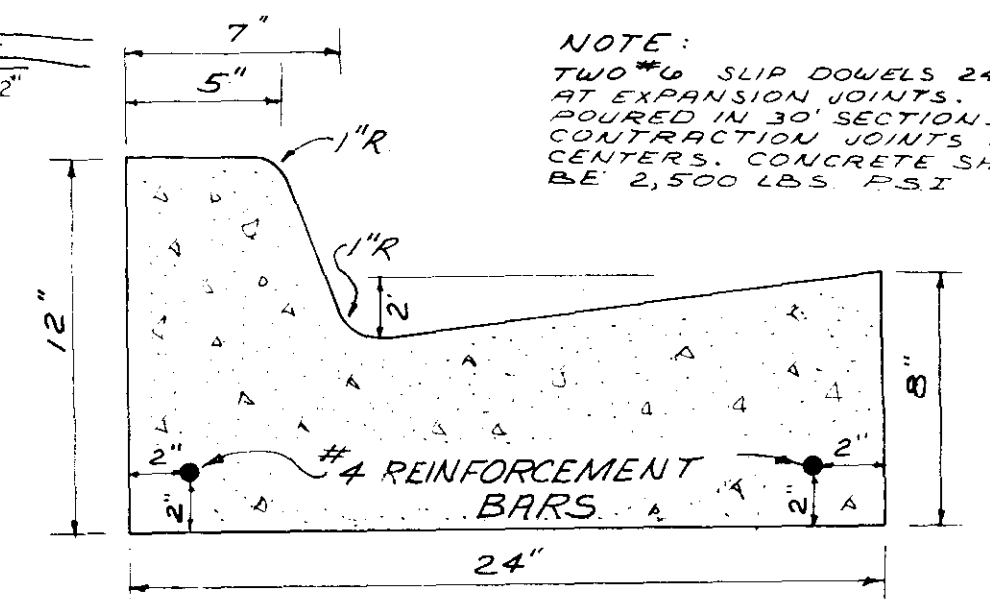
PWP-01910

GENERAL NOTES:

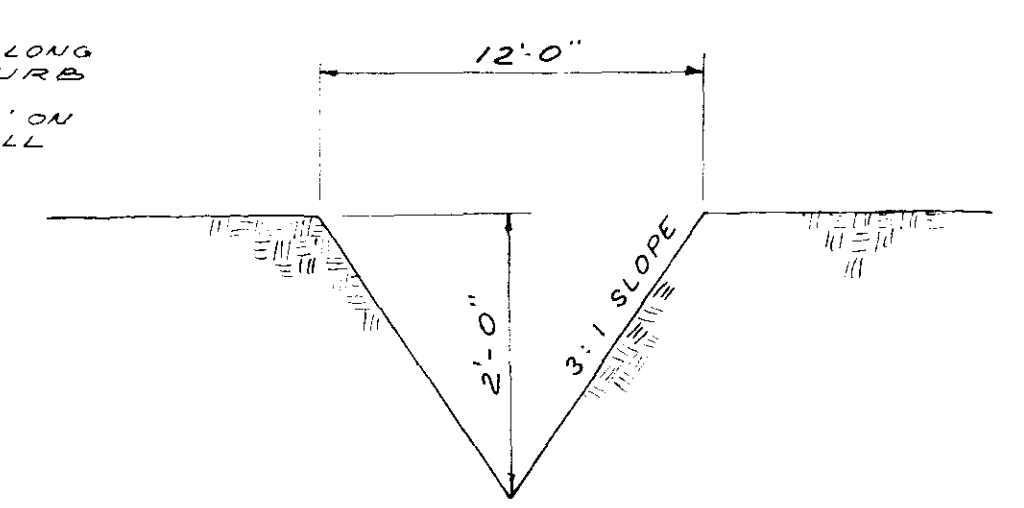
1. The existing utility locations shown on plans are approximate only. The Contractor shall coordinate the location of the existing utilities (power, telephone, gas, water, sewer, etc.) with the appropriate utility company before construction begins.
2. Any utility line or service line encountered during construction, whether shown on plans or not, shall be protected by the Contractor at no additional cost to the City.
3. The Contractor shall be responsible for verifying horizontal and vertical clearances on all utility crossings before installation.
4. The Contractor shall fertilize and seed all areas where the existing vegetation was removed or disturbed during construction and not required to be solid sodded by the Engineer. The fertilizer shall be applied at a rate of 1200 lbs per acre. Seeding shall be as stated in the Specifications.
5. Unsuitable material which may be encountered shall be excavated to the limits shown in undercut schedule or as directed by the Engineer and backfilled with approved material.
6. Water, and storm pipe lengths may be varied in construction of project to conform to normal joint lengths - only with prior approval of Engineer.
7. Any TBM's indicated on plans which are or may be in conflict with construction activities shall be relocated by Engineer prior to commencement of construction in the immediate area.
8. All detailed construction staking will be by Engineer - one time only.
9. Engineer will provide off-set grade stakes and cut sheets for all curb and gutter and sanitary sewer and storm sewer pipe.
10. Engineer may vary number and location of FH's dependent on field determination.
11. All proposed water mains shall have minimum 36" cover, except at fire hydrant locations, where cover shall be adjusted to allow proper vertical placement of fire hydrant.
12. The Contractor shall be responsible for completing all sampling and testing of materials, and for submission of same to Engineer for approval prior to their use. This shall include select backfill, concrete, asphalt, aggregates, rip-rap and other items as specified by the Engineer. This shall be an absorbed item.
13. The Contractor shall obtain and furnish to the the Engineer copies of manufacturers certifications for all water and sewer piping, storm culverts, castings, valves, hydrants, fittings, tubing, sod and seed. Such certification shall state that the subject material meets the specified quality, grade, purity, class or weight, or that the subject material meets or exceeds the requirements of the applicable ASTM, AASHTO, AWWA, or other standards.



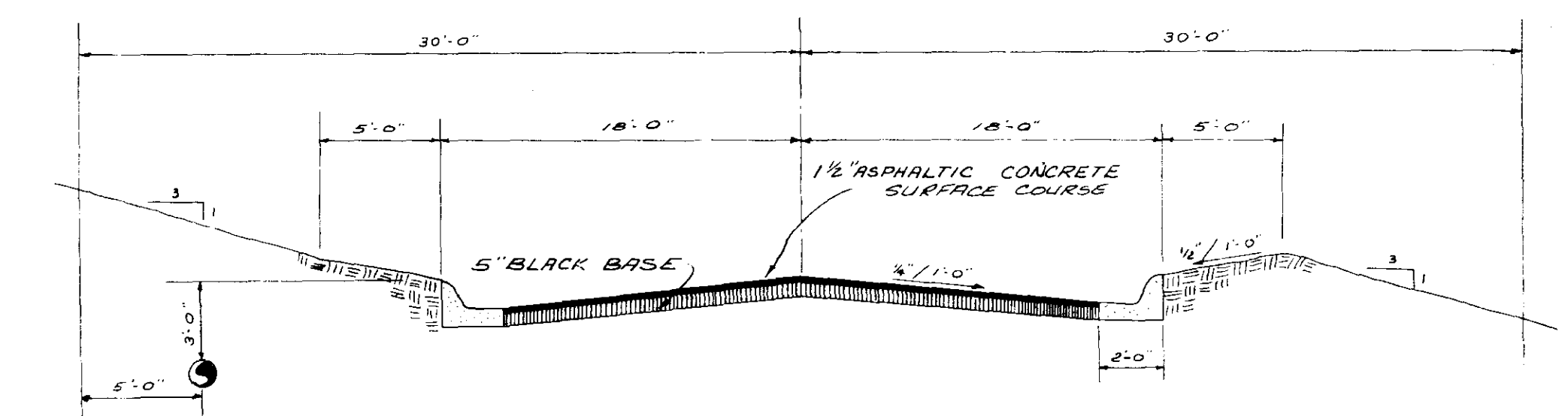
CURB INLET TYPE A
SCALE: 1"=1'-0"
NOTE: 4" DIA X 4'-0" LONG PIPE AND WASHED GRAVEL INCLUDED W/ COST OF INLET.



TYPICAL CURB DETAIL
N.T.S.



TYPICAL V\"/>



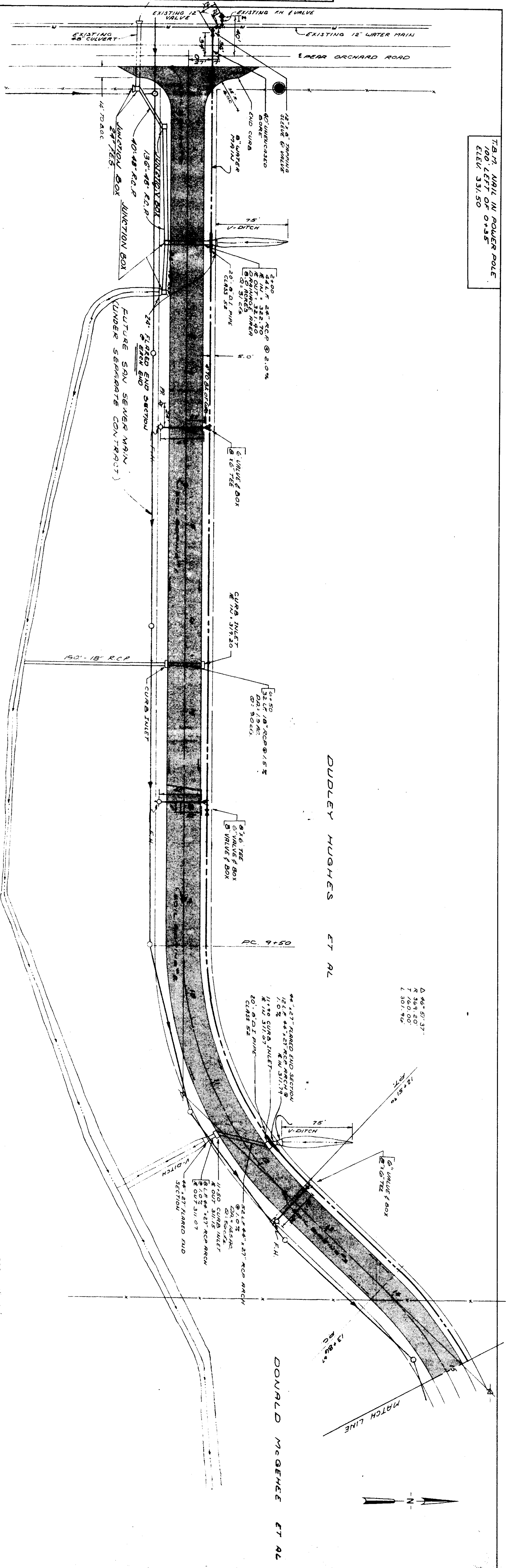
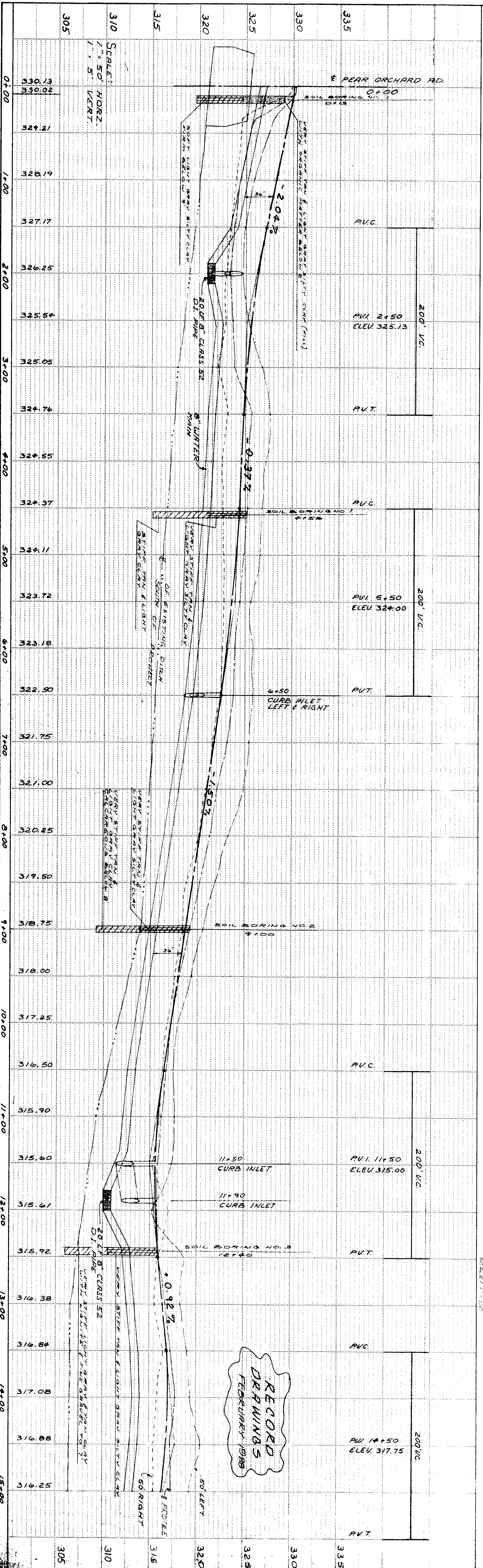
TYPICAL ROADWAY SECTION
N.T.S.

RECORD DRAWINGS
FEBRUARY 1988

CITY OF RIDGELAND SPECIAL ASSESSMENT IMPROVEMENT NO. 2		
JOE A. WAGGONER Civil Engineer - Brandon/Jackson, Miss.		
DRAWN BY: J.P.	DATE: 8-29-84	SHEET NO.
CHECKED BY: J.M.	SCALE: 1"=50.0'	1 OF 8
APPROVED BY: J.W.		

PROFILE		BY	DATE
SURVEYED			
PLOTTED			
GRADES CHECKED			
NO. M.S. NOTED			
STRUCTURE NOTATIONS CH'KD			

PLAN		BY	DATE
SURVEYED			
PLOTTED			
ALIGNMENT CHECKED			
RT OF WAY CHECKED			



7.8" W/11 IN POWER POLE
 ELEV. 331.50

SCALE: 1"=50'
 DATE: 1-15-88
 SPECIAL ASSESSMENT IMPROVEMENT SHEET NO. 2

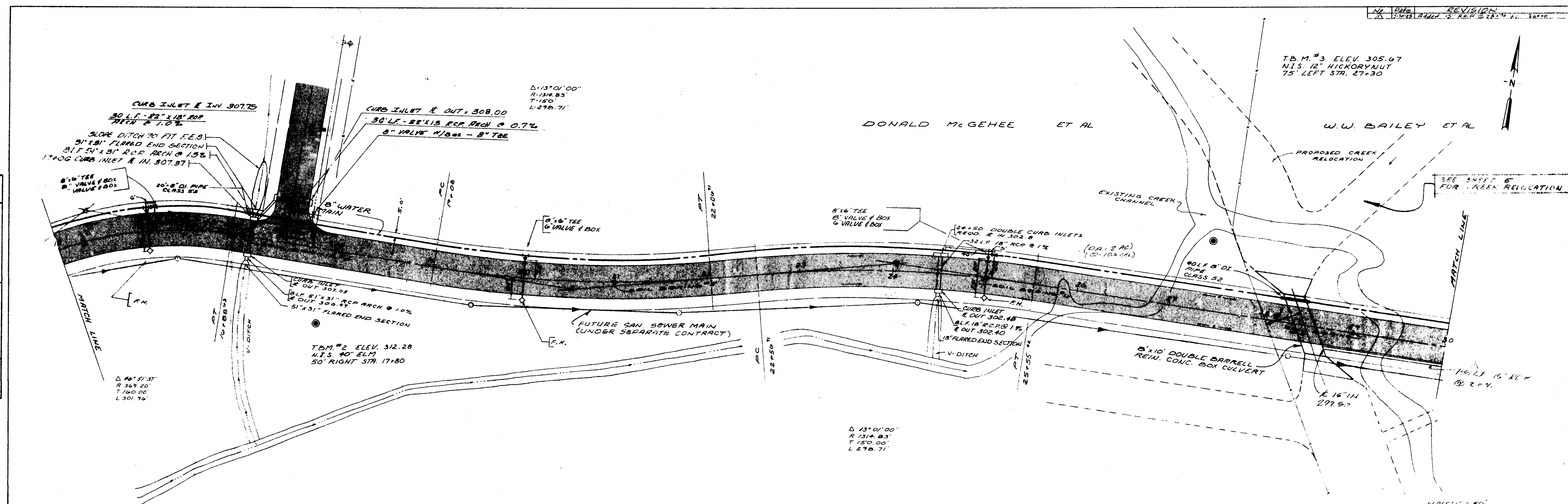
T.B.M. #3 ELEV. 305.47
 N.I.S. 12" HICKORY JUT
 75' LEFT STA. 27+30

DONALD McGEHEE ET AL

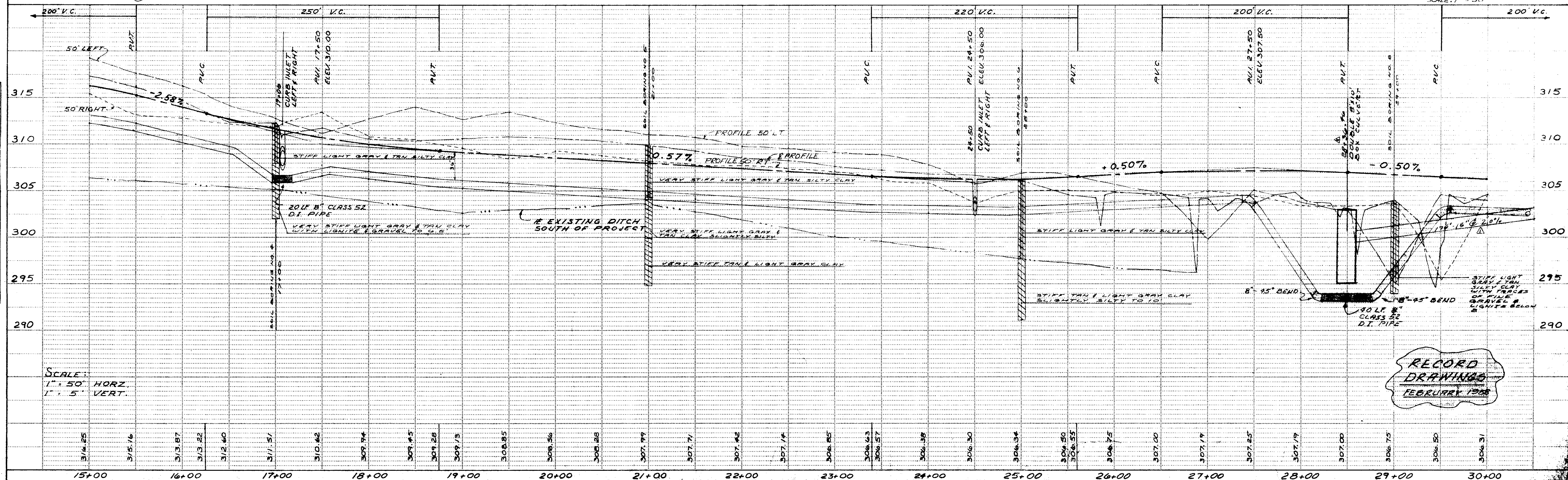
W.W. BAILEY ET AL



DATE	
BY	
PLAN	
SURVEYED	
ALLOTTED	
GRADES CHECKED	
RT. OF WAY CHECKED	
NOTE BOOK	
NO.	



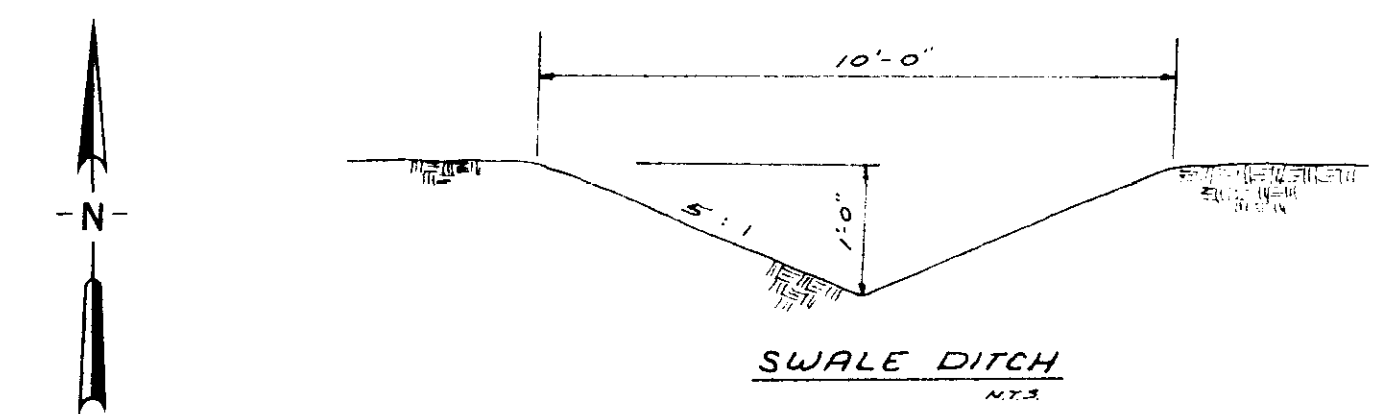
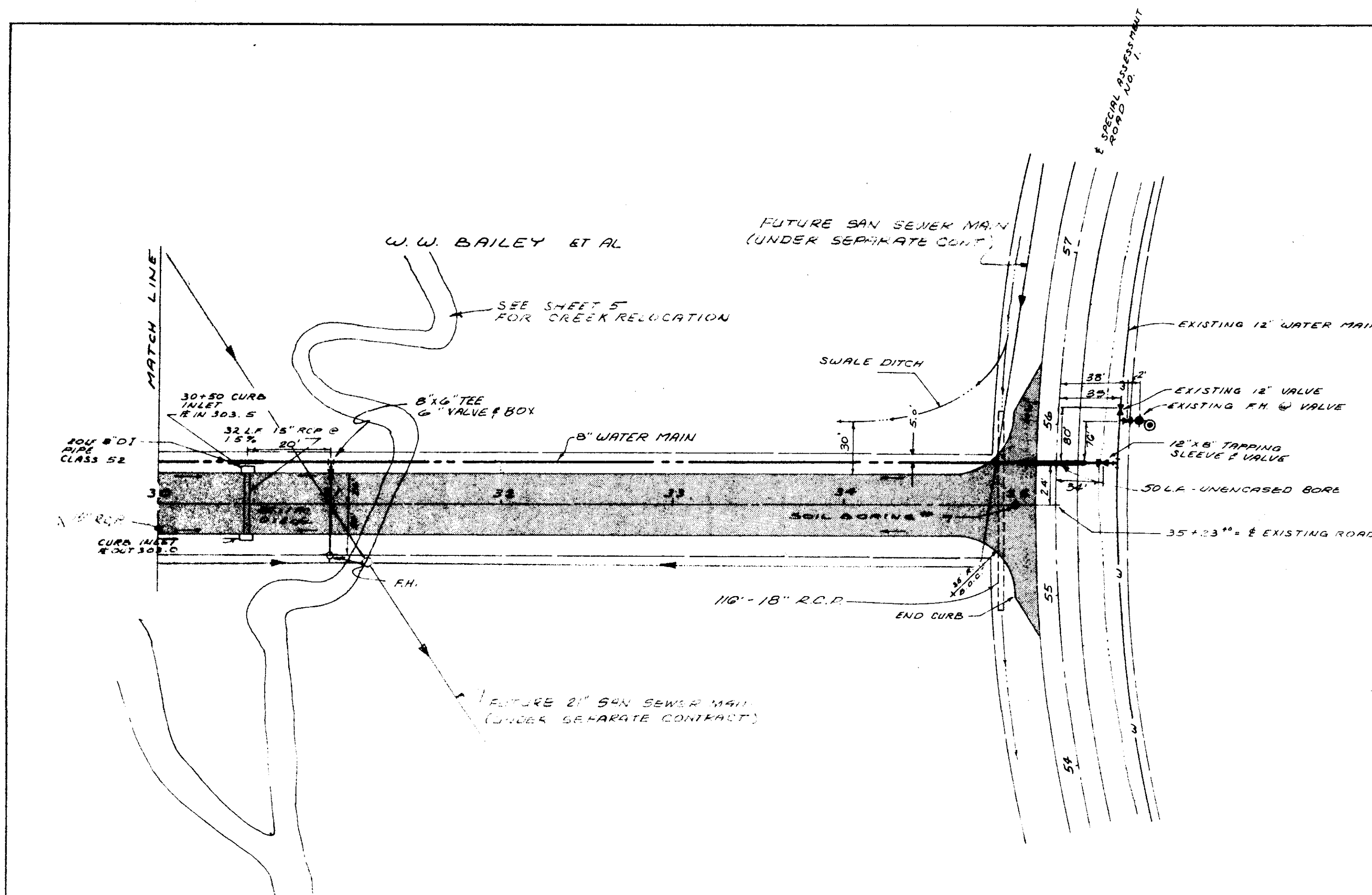
DATE	
BY	
PROFILE	
SURVEYED	
GRADES CHECKED	
B. M.'S. NOTED	
STRUCTURE NOTATIONS CHECKED	
NOTE BOOK	
NO.	



RECORD DRAWING
 FEBRUARY 1985

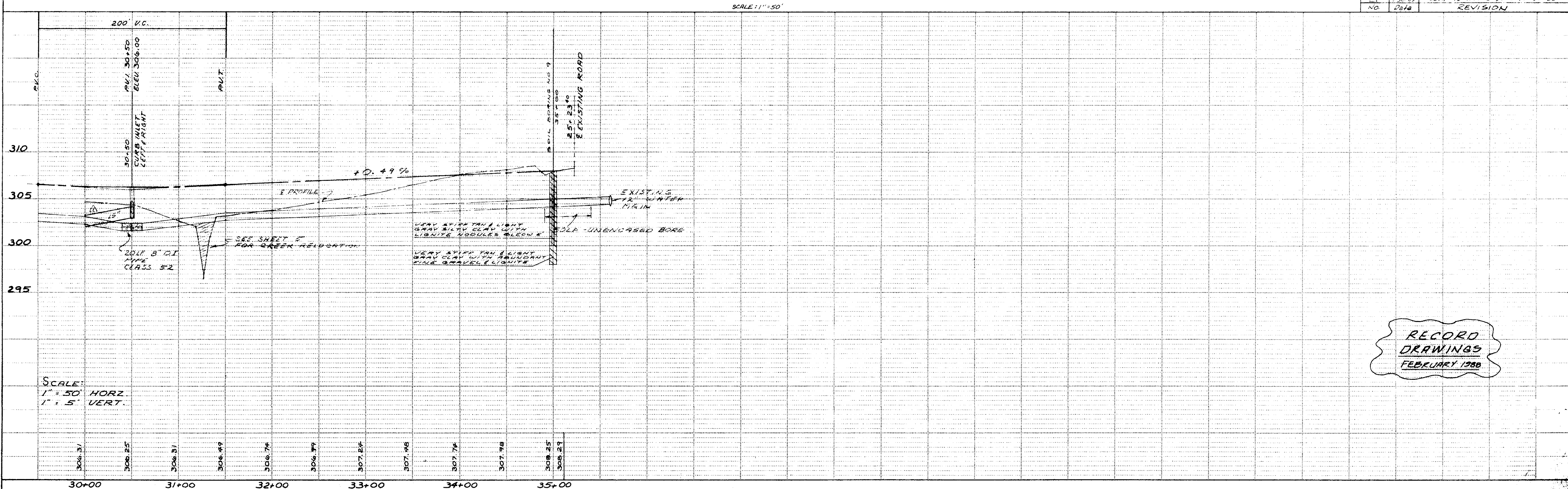
DATE	
BY	
CHECKED	
DESIGNED	
APPROVED	
NOTE BOOK NO.	
PLAN	

DATE	
BY	
CHECKED	
DESIGNED	
APPROVED	
NOTE BOOK NO.	
PROFILE	



T.B.M. ELEV. 310.99
TOP OF FLANGE BOLT
OVER LARGE OPENING
ON FIRE HYDRANT.

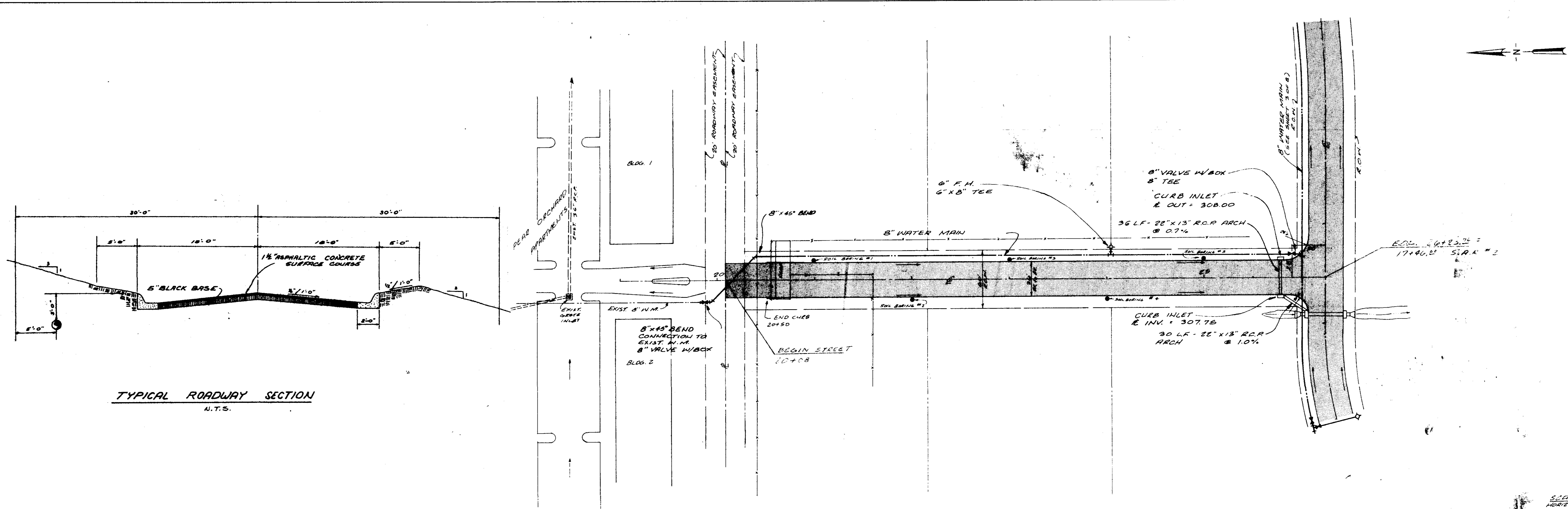
NO.	Date	REVISION
1	2-20-88	Added 15' R.C.P. 30\"/>



SCALE:
1" = 50' HORZ.
1" = 5' VERT.

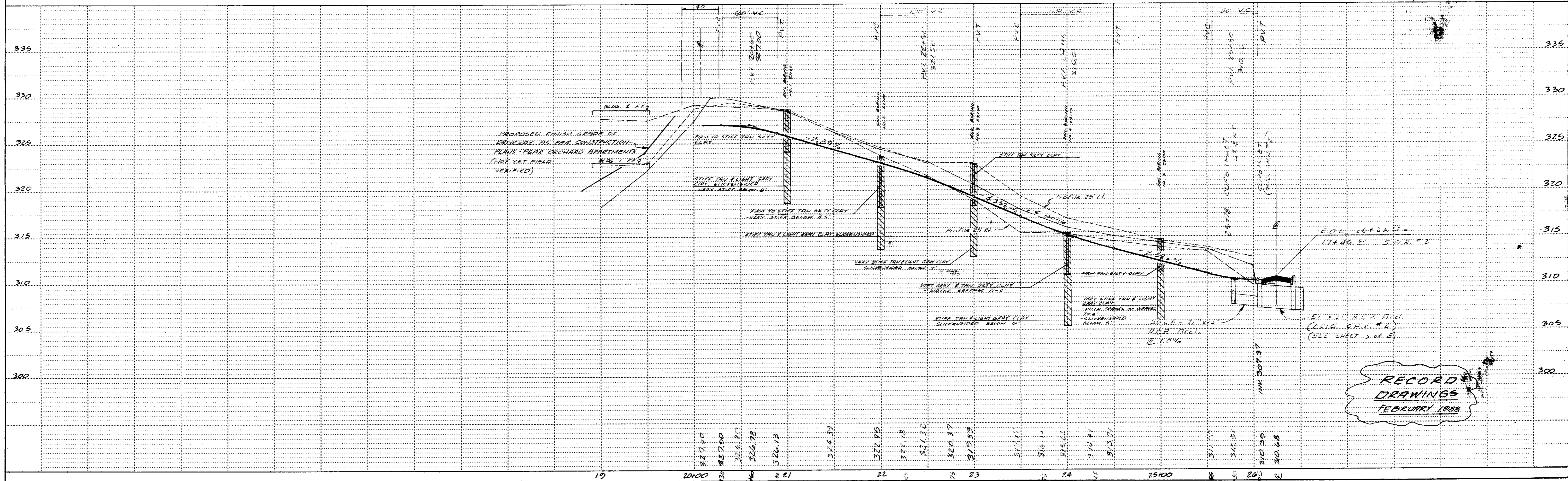
RECORD
DRAWINGS
FEBRUARY 1988

DATE	
BY	
DESIGNED	
CHECKED	
PLANNED	
NOTED	
NO.	



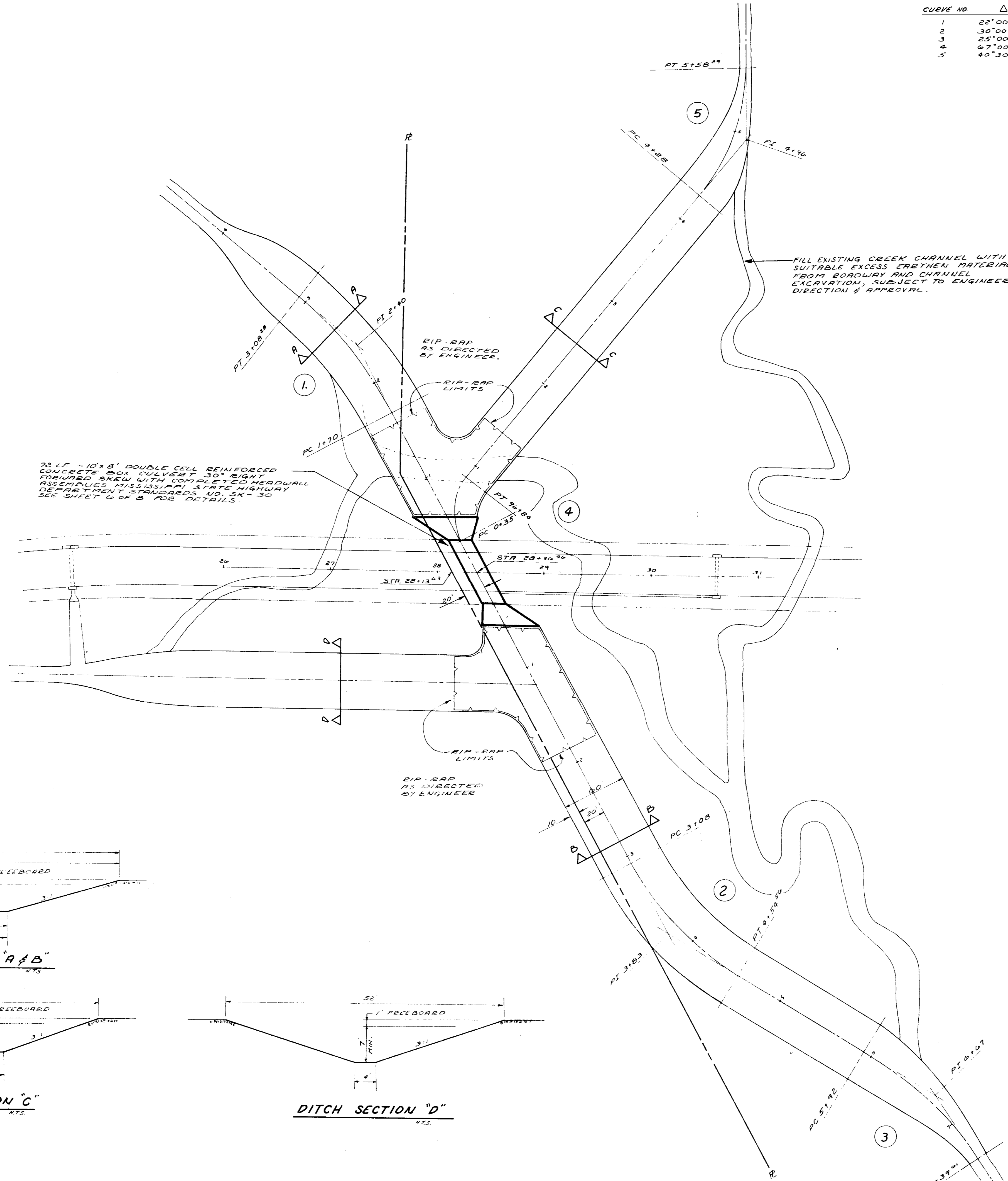
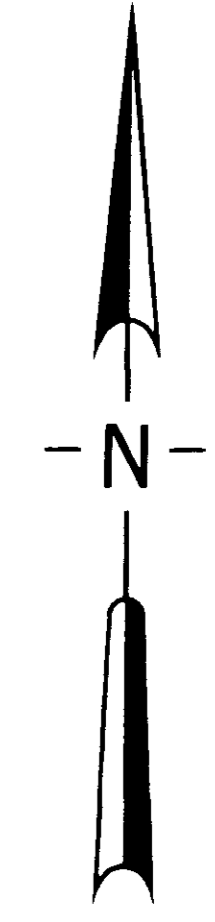
TYPICAL ROADWAY SECTION
N.T.S.

DATE	
BY	
DESIGNED	
CHECKED	
PLANNED	
NOTED	
NO.	

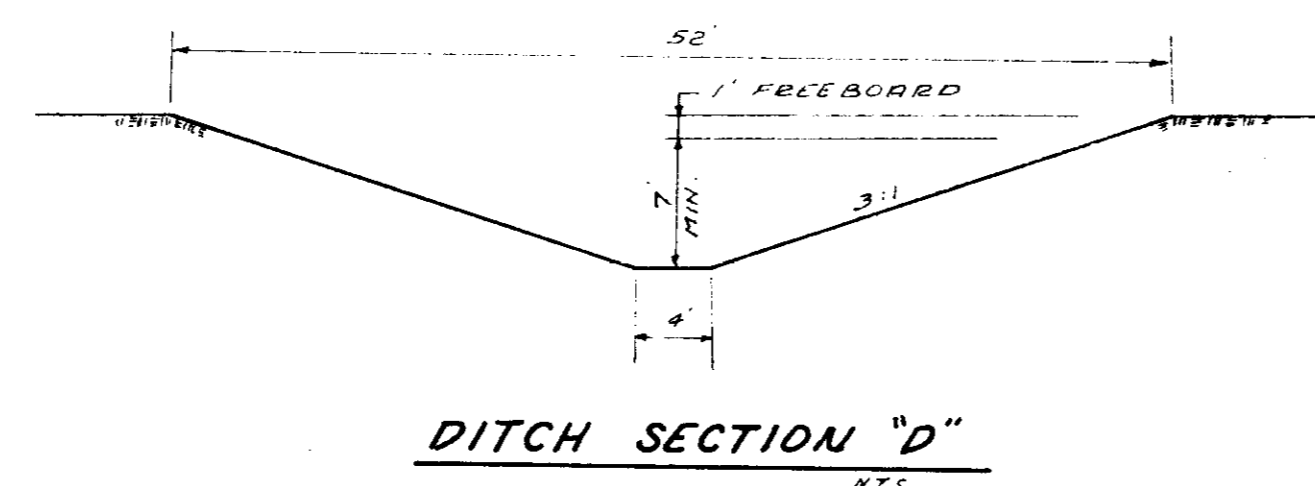
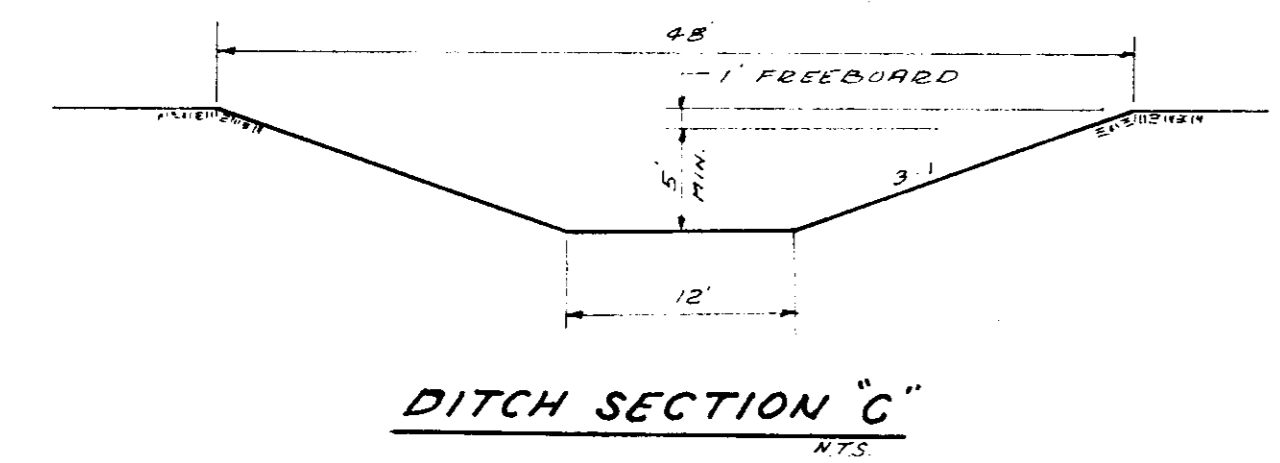
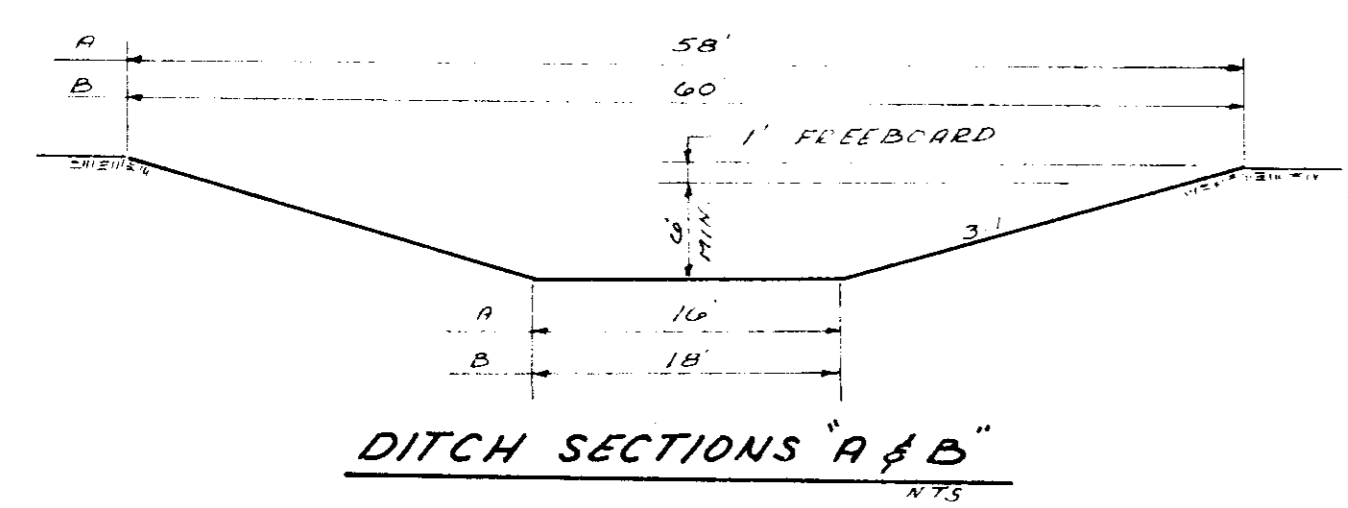


RECORD DRAWINGS
FEBRUARY 1988

CURVE NO.	Δ	RADIUS	TAN.	LENGTH
1	22°00'	346.12'	70.00'	130.25'
2	30°00'	279.90'	75.00'	146.50'
3	25°00'	330.30'	75.00'	147.01'
4	67°00'	52.00'	35.00'	61.84'
5	40°30'	184.32'	68.00'	130.29'



28 LF - 10' x 8' DOUBLE CELL REINFORCED CONCRETE BOX CULVERT 30" RIGHT FORWARD SKEW WITH COMPLETED HEADWALL DEPARTMENT STANDARD NO. SK-30 SEE SHEET G OF B FOR DETAILS.



RECORD DRAWINGS
FEBRUARY 1988

CITY OF RIDGELAND		
SCHOOL CREEK CROSSING AND RECHANNELIZATION		
JOE A. WAGGONER Civil Engineer - Brandon / Jackson, Miss.		
DRAWN BY: J.W.P.	DATE: 5-24-85	SHEET NO.
CHECKED BY: J.E.M.	SCALE: 1" = 50'	5 OF 8
APPROVED BY: J.A.W.		

JOB NO 84-800-01