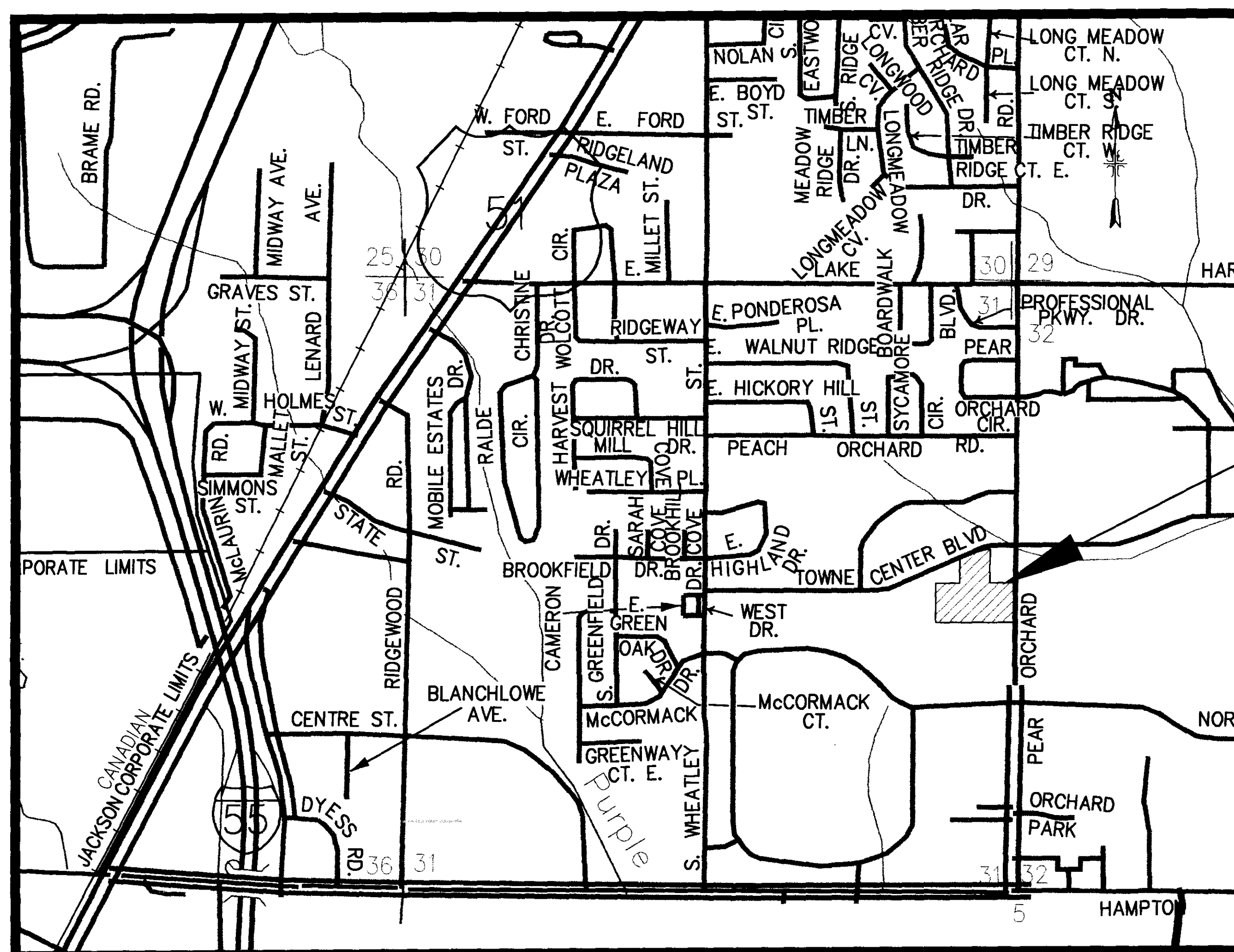
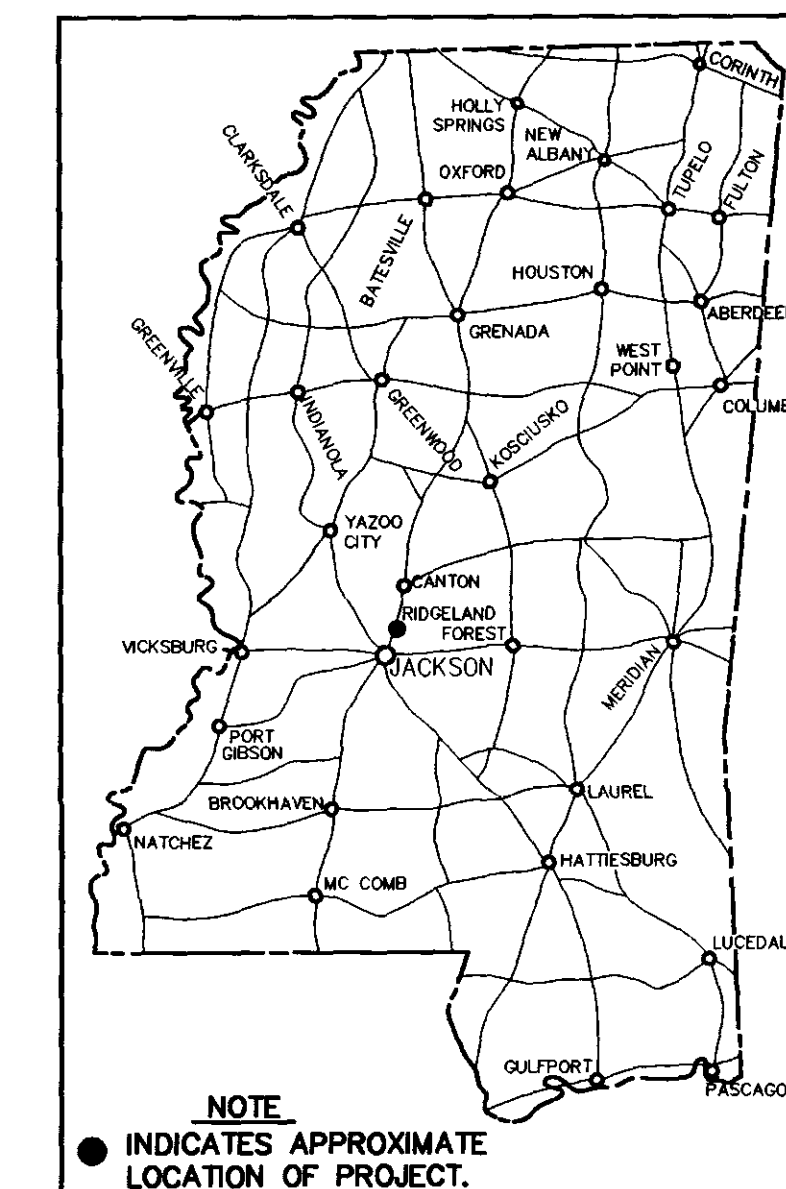


COMMERCIAL DEVELOPMENT CONSTRUCTION PLANS RIDGELAND, MISSISSIPPI

Town Center & Pear Orchard

PREPARED FOR THE ARBOR CORPORATION

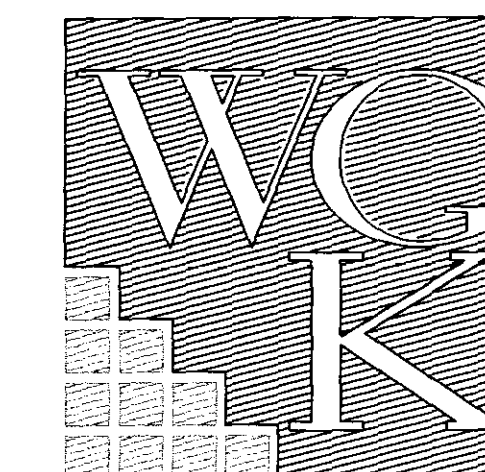


LOCATION MAP

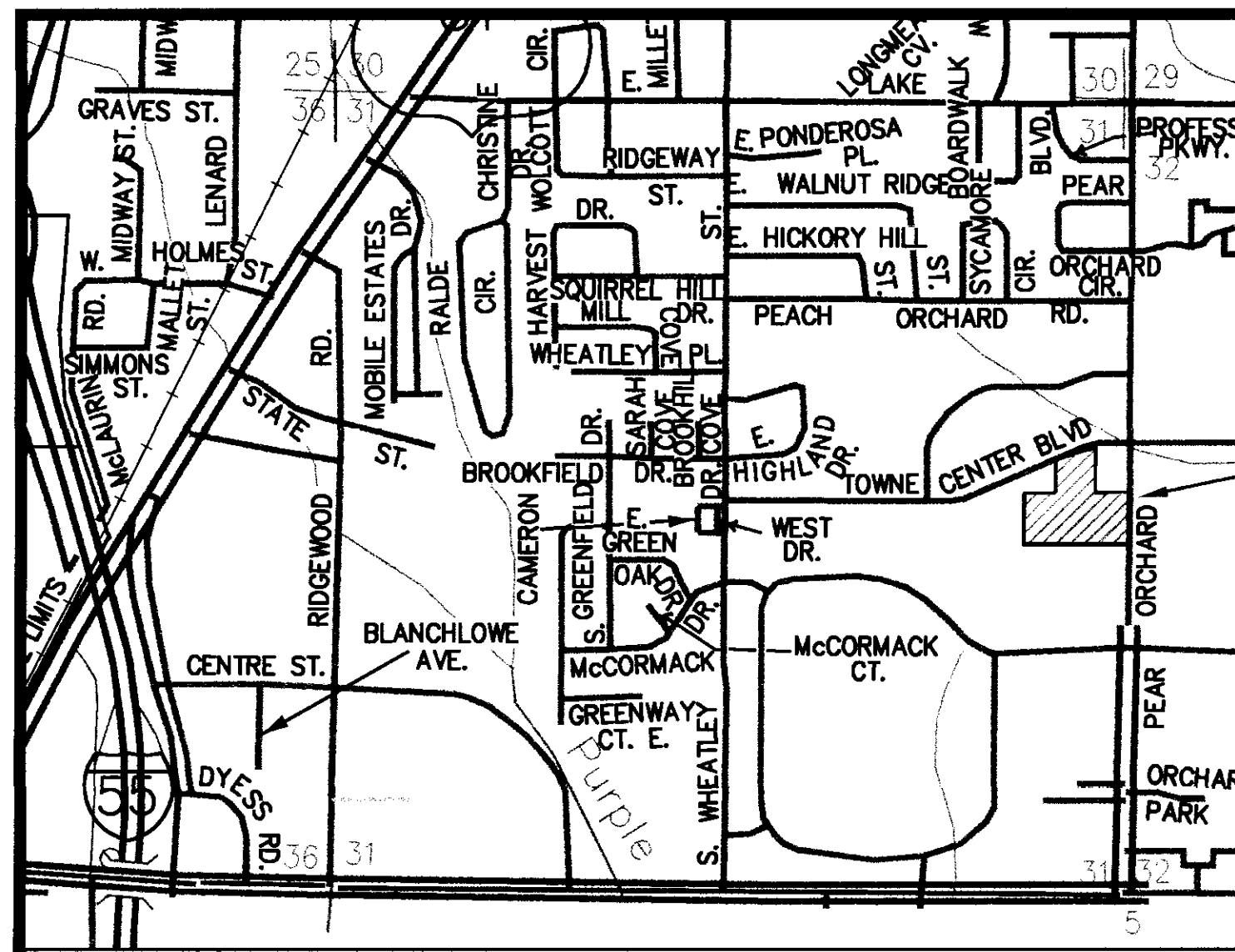


WILLIFORD, GEARHART & KNIGHT, INC.
ENGINEERS & SURVEYORS
CANTON, MISSISSIPPI

RECORD DRAWING



JUNE 2001



VICINITY MAP
SCALE: 1"=1000'

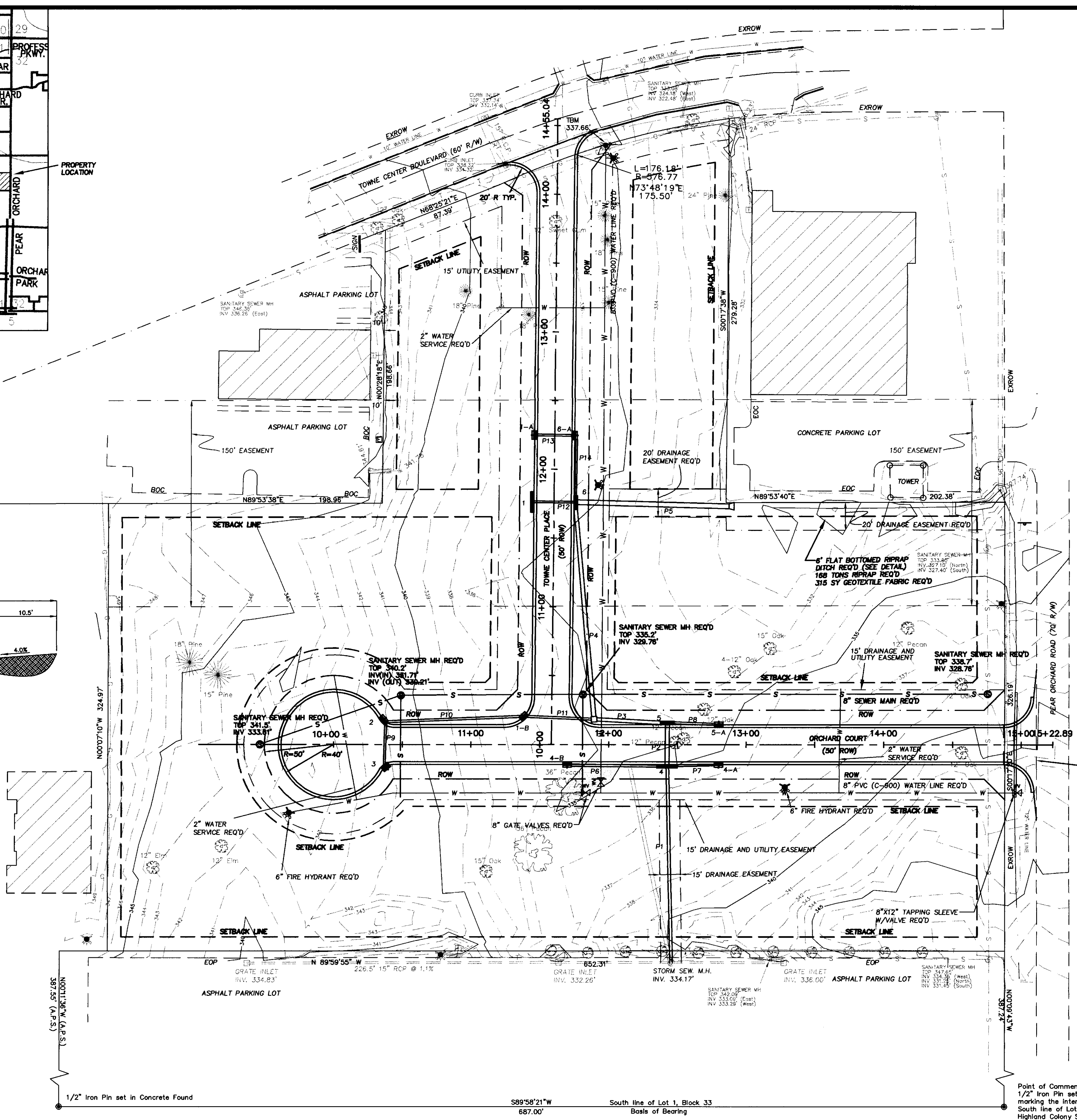
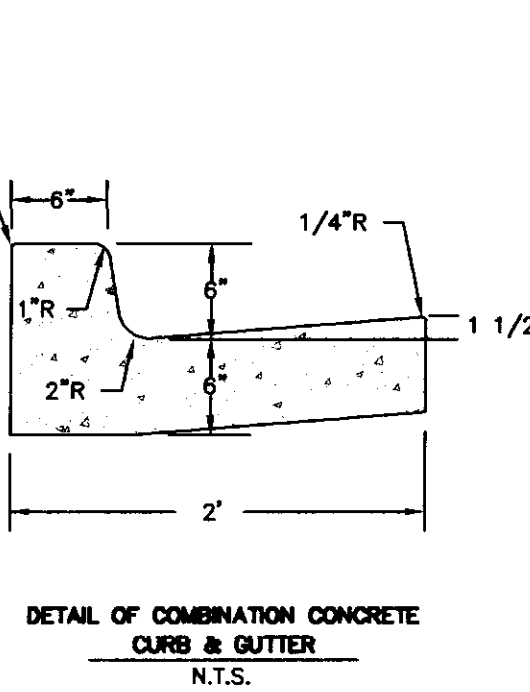
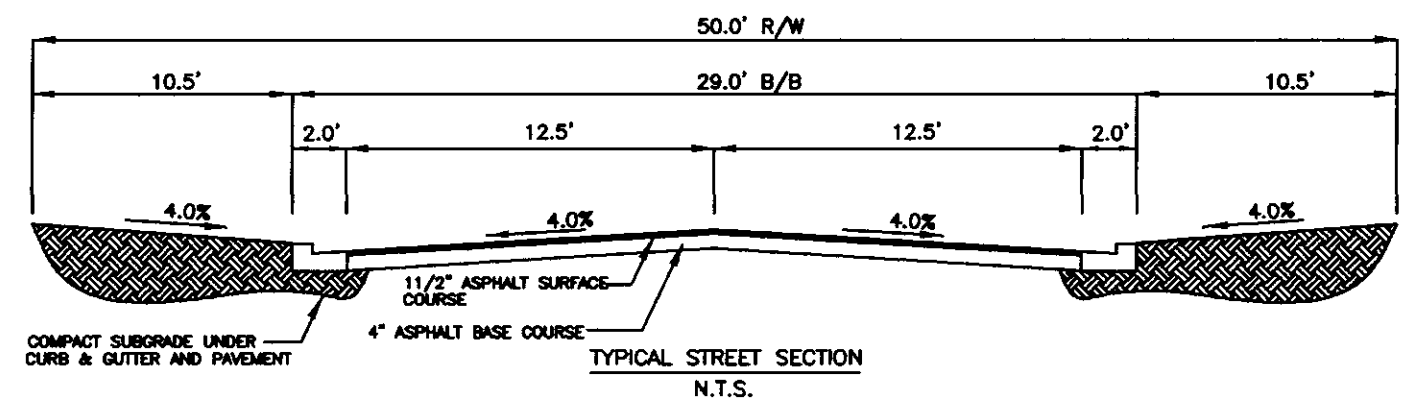
PROPERTY IS ZONED C-2 (General Commercial)
 DATE OF SURVEY: March 21, 2001
 TOTAL ACREAGE: 6.276 Acres total (as surveyed)
 PROPERTY OWNED BY: The Arbor Corporation
 P.O. Box 447
 Dekalb, MS 39238

CLASS "B" SURVEY IN ACCORDANCE WITH THE MINIMUM STANDARDS FOR LAND SURVEYING IN THE STATE OF MISSISSIPPI

ALL STREETS ARE 50' RIGHT-OF-WAY
 ALL PROPOSED UTILITIES ARE TO BE UNDERGROUND

THIS PROPERTY IS LOCATED IN ZONE "X" DEFINED AS AN AREA DETERMINED TO BE OUTSIDE THE 100 YEAR FLOODPLAIN ACCORDING TO THE FLOOD INSURANCE RATE MAP COMMUNITY PANEL NUMBER 28089-C-0320-D FOR MADISON COUNTY AS WAS EFFECTIVE ON APRIL 15, 1994

NOTE: VARIANCE REQUESTED FOR 20' FRONT SETBACK ON NORTH AND SOUTH ROW OF ORCHARD COURT



MANHOLE AND INLET LID NOTE: ALL RIM ELEVATIONS ARE APPROXIMATE. ALL LIDS SHOULD BE SET FLUSH WITH THE PAVEMENT, SIDEWALK, CURB, OR GRASS SURROUNDING THE LID.

MATCH EXISTING LONGITUDINAL SLOPE AT EDGE OF PAVEMENT

Point of Commencement
 1/2" Iron Pin set in Concrete marking the intersection of the South line of Lot 1, Block 33, Highland Colony Subdivision, with the West right-of-way line of Pear Orchard Road

RECORD DRAWING

C:\GIS\AR\PROJECTS\130\DWG\REVISED.dwg Thu Apr 18 08:26:36 2002

NO.	DATE	REVISIONS	BY
1	6/13/01	REVISIONS TO STORM DRAINAGE, EASEMENTS, AND ADDITION OF CROSS-SECTION AND CURB DETAIL PER R/LAND COMMENTS	WAM

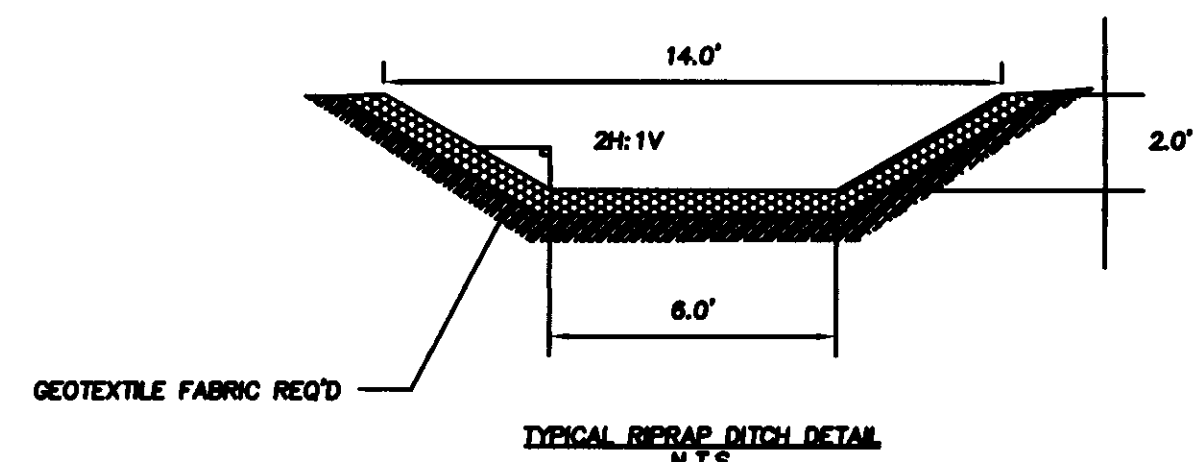
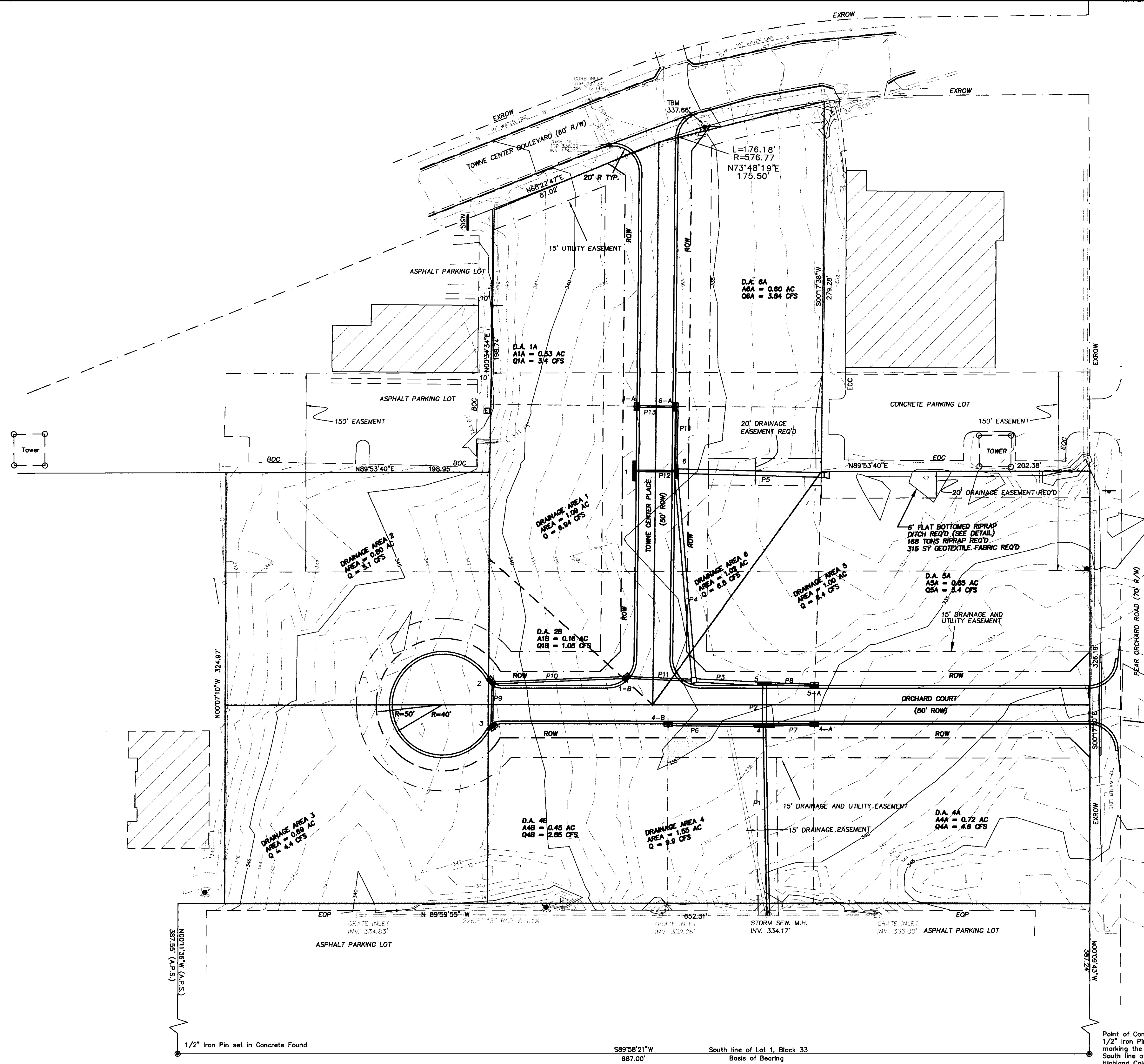
DESIGNED BY WAM	DATE 6/13/01
DRAWN BY WAM	APPROVED BY MKM
REVIEWED BY MKM	SCALE 1"=40'



WILLIFORD, GEARHART & KNIGHT, INC.
 ENGINEERS & SURVEYORS

ARBOR CORPORATION
 PRELIMINARY PLAT
 RIDGELAND, MS

E01-130
WGK# - E01-130
SHEET NO.
3 OF 9



INLET TABLE

INLET	D.A. (acres)	Q (cfs)	Q _i (cfs)	Q _b (cfs)
1-A*	0.53	3.4	2.17	1.26
1-B*	0.16	1.05	2.17	0.97
1**	1.09	6.94	4.78	---
2*	0.80	5.1	3.03	2.10
3*	0.69	4.4	2.76	1.68
4-A*	0.72	4.6	2.75	1.84
4-B*	0.45	2.85	2.81	1.76
4**	1.55	9.9	6.02	---
5-A**	0.85	5.4	3.01	2.37
5***	1.00	6.4	3.03	---
6-A*	0.60	3.84	2.35	1.51
6***	1.02	6.5	4.18	---

Q = FLOW PRODUCED ON-SITE
 Q_i = FLOW INTERCEPTED BY INLET
 Q_b = FLOW BYPASSED BY INLET
 * INDICATES GRATE INLET
 ** INDICATES TRIPLE CURB INLET
 *** INDICATES DOUBLE CURB INLET

PIPING TABLE

PIPE	DIA. (in.)	L (ft.)	GRADE (%)	Q (cfs)	V (fps)
P1	24	141	1.54	20	6.37
P2	44X27	29	0.31	31.58	5.02
P3	44X27	50	0.34	37.62	5.98
P4	36	156	0.74	45.58	8.08
P5	58X36	112	0.45	59.06	6.61
P6	15	72.5	0.69	2.81	2.29
P7	18X11	34	0.88	2.75	2.52
P8	18X11	34	0.88	3.01	2.76
P9	15	31	0.36	2.76	3.67
P10	18	101	1.19	5.79	4.62
P11	18	50	1.00	7.96	5.79
P12	15	29	0.88	4.78	4.80
P13	15	29	0.52	2.17	3.78
P14	21	41	0.36	4.52	4.64

RECORD DRAWING

C:\SBSA\PROJ\E01-130\DWG\REVISED.dwg Thu Apr 16 09:41:13 2002

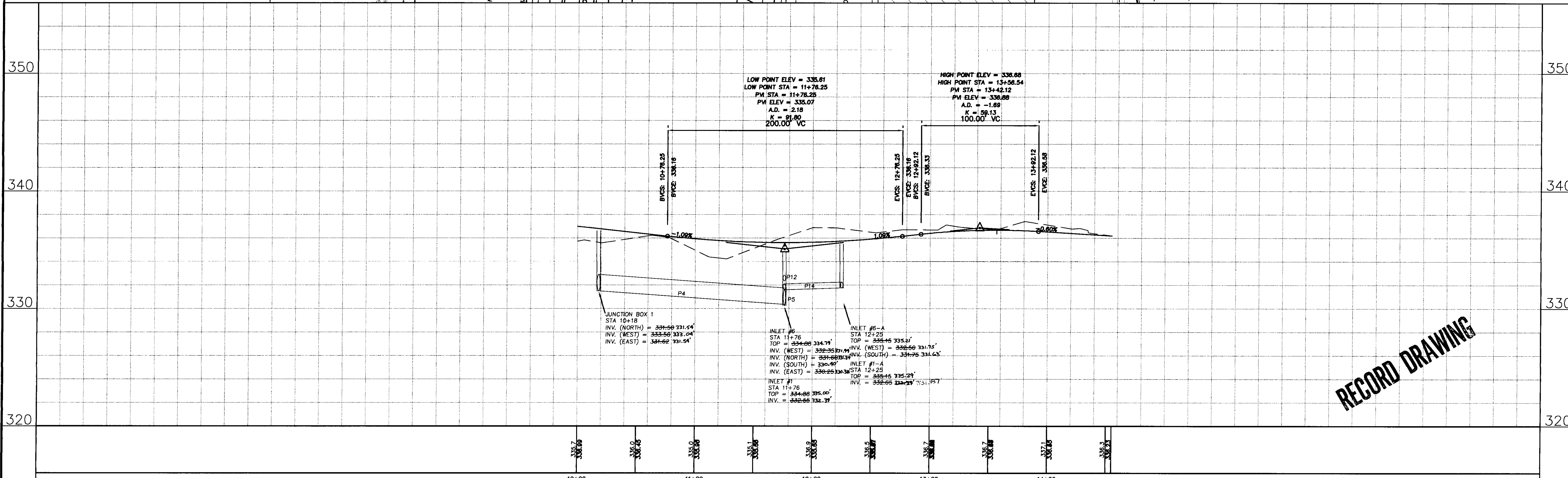
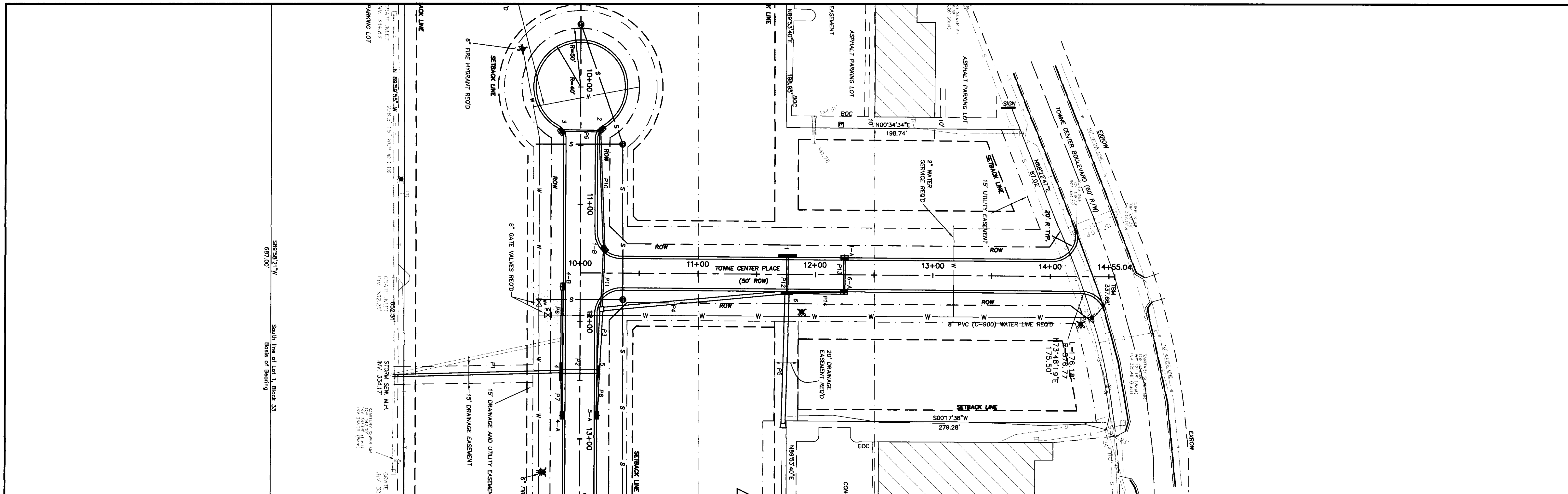
NO.	DATE	REVISIONS	BY
1.	7/30/01	MODIFIED STORM DRAINAGE	WAM

DESIGNED BY	WAM	DATE	7/30/01
DRAWN BY	WAM	APPROVED BY	MKM
REVIEWED BY	MKM	SCALE	1"=40'

WILLIFORD, GEARHART & KNIGHT, INC.
 ENGINEERS & SURVEYORS

ARBOR CORPORATION
 DRAINAGE & EROSION CONTROL SHEET
 RIDGELAND, MS

E01-130
WGK# - E01-130
SHEET NO.
4 OF 9



RECORD DRAWING

NO.	DATE	REVISIONS	BY
1.	7/30/01	MODIFIED STORM DRAINAGE AND CENTERLINE PROFILE OF ROADWAY	WAM

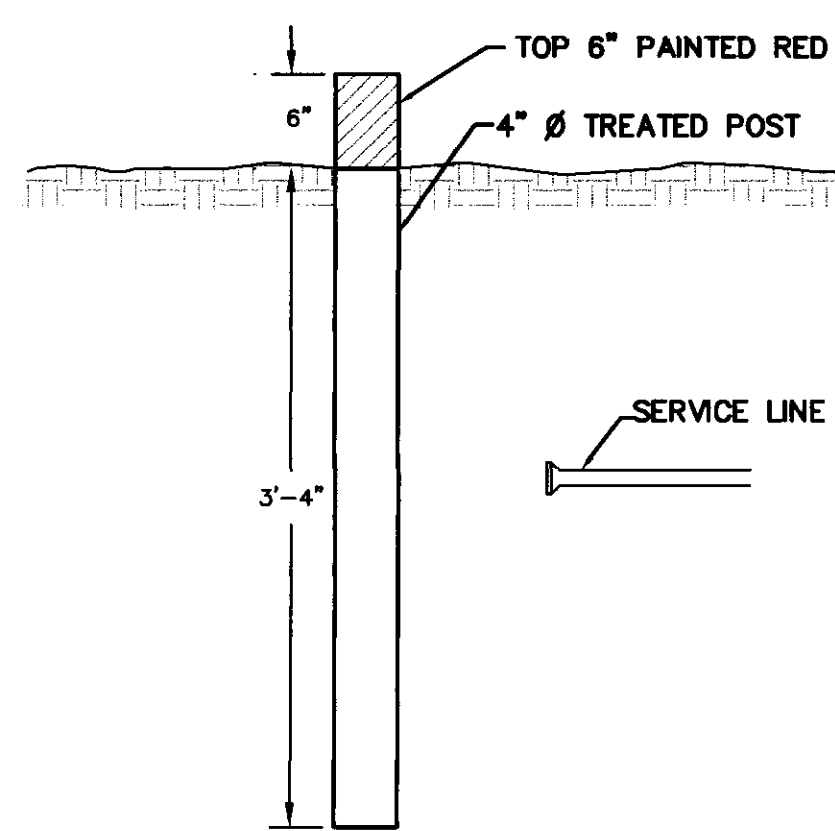
DESIGNED BY WAM	DATE 7/30/01
DRAWN BY WAM	APPROVED BY MKM
REVIEWED BY MKM	SCALE 1" = 40'(H), 1" = 4'(V)

WILLIFORD, GEARHART & KNIGHT, INC.
ENGINEERS & SURVEYORS

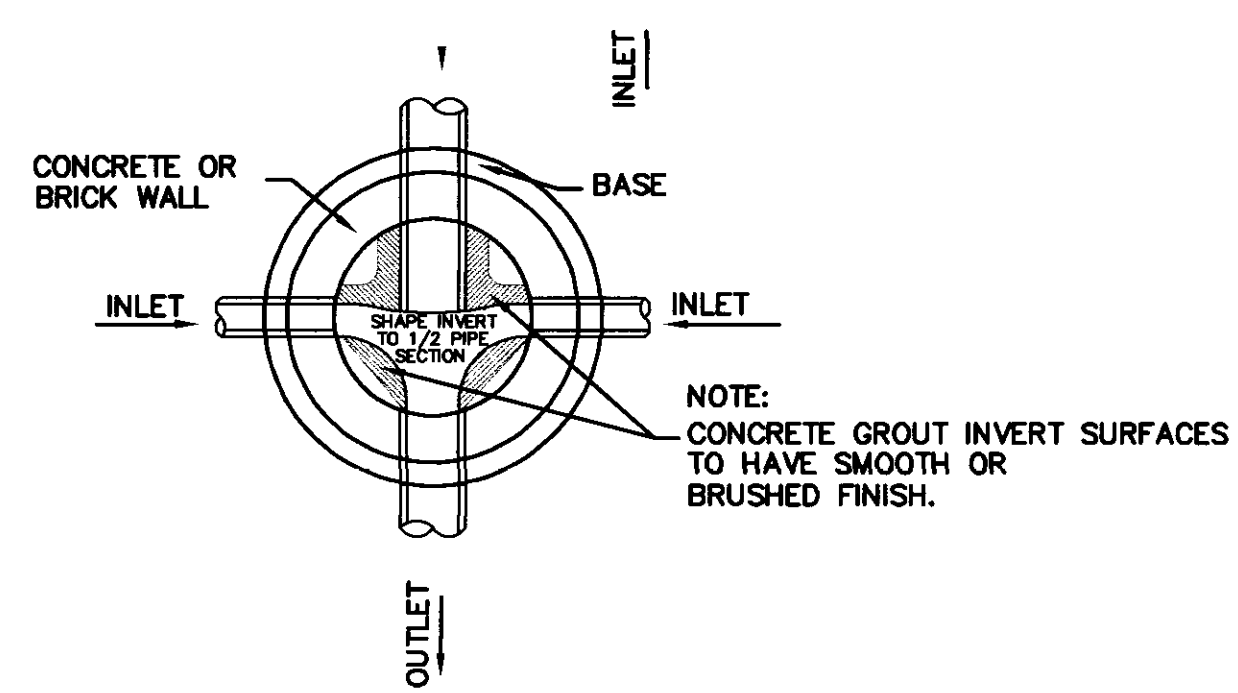
ARBOR CORPORATION
PLAN / PROFILE TOWNE CENTER PLACE
RIDGELAND, MISSISSIPPI

E01-130
WOK# - 01-130
SHEET NO.
6 OF 9

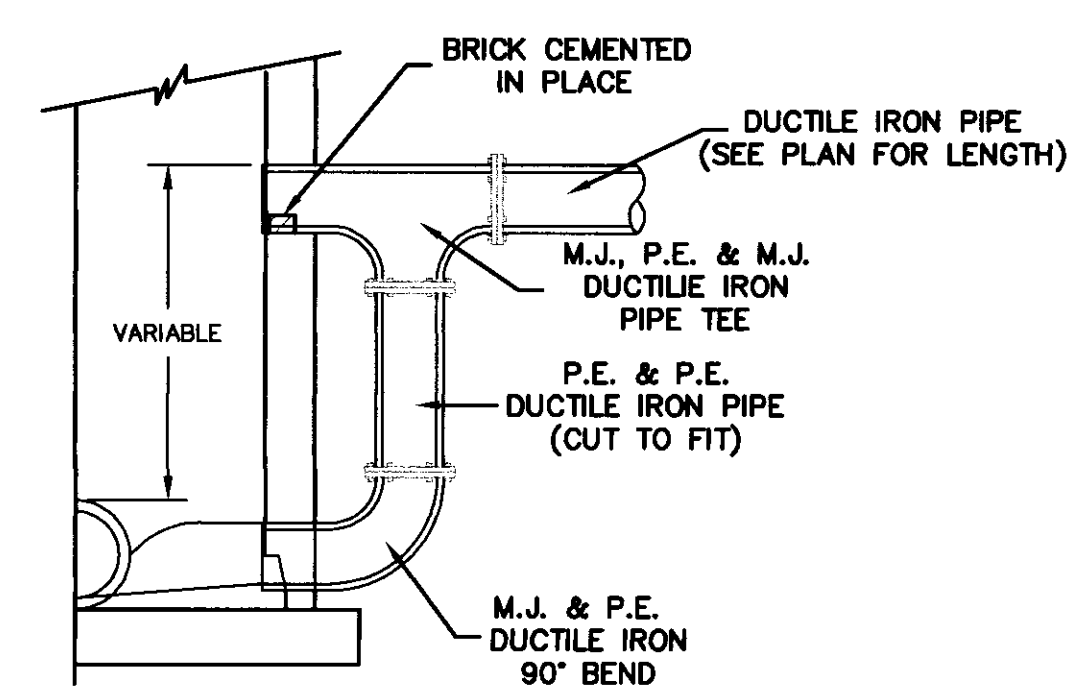
C:\SDOK\PROJ\01-130\DWG\REVISED.dwg Thu Apr 19 09:01:35 2002



SEWER SERVICE MARKER

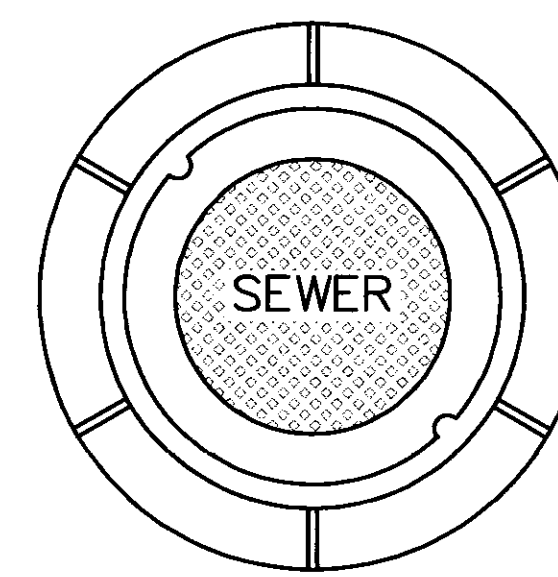


PLAN OF MANHOLE FLOW CHANNELS

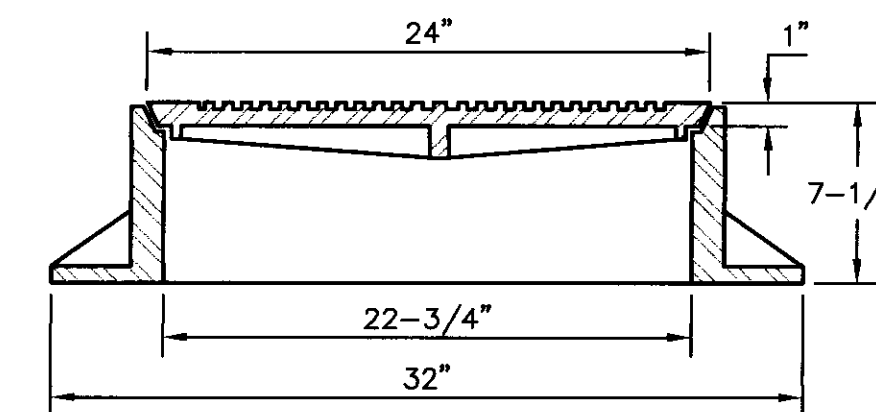


HALF SECTION

MANHOLE WITH DROP CONNECTION

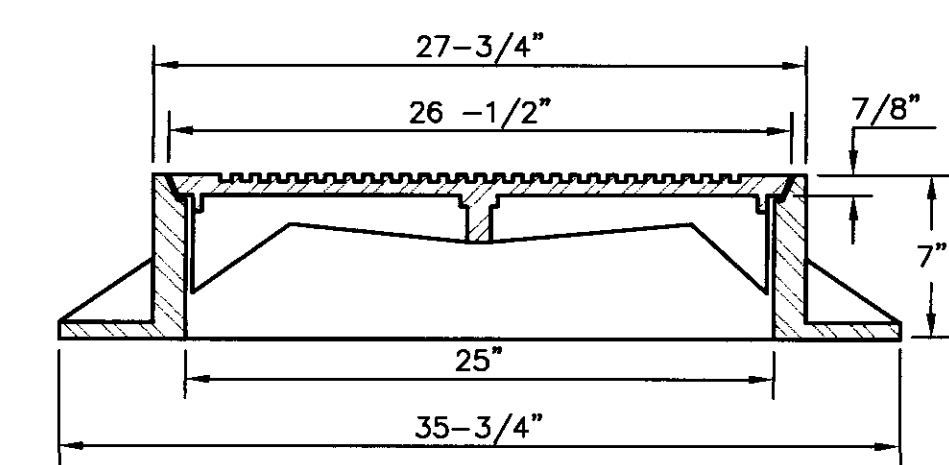


PLAN MANHOLE CASTING



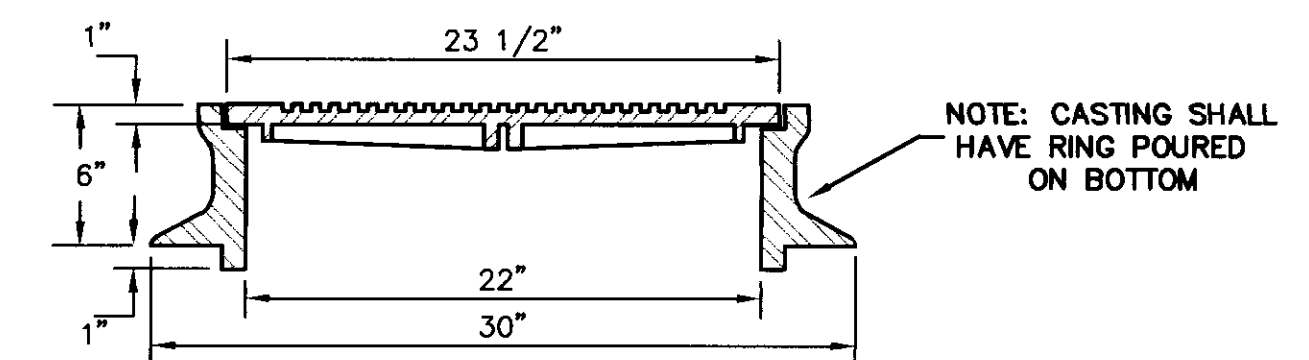
SECTION TYPE "B" MANHOLE CASTING

NOTE:
 1) USE TYPE "B" MANHOLE CASTING FOR ANY MANHOLE NOT IN STREET R.O.W.
 2) USE HARPER NO. 1 (M.S.P.E. STANDARD) LIGHT WEIGHT (330 LBS), VULCAN NO. VM-17 (300 LBS) OR OPELIKA FOUNDRY NO. C-2-1 (325 LBS)



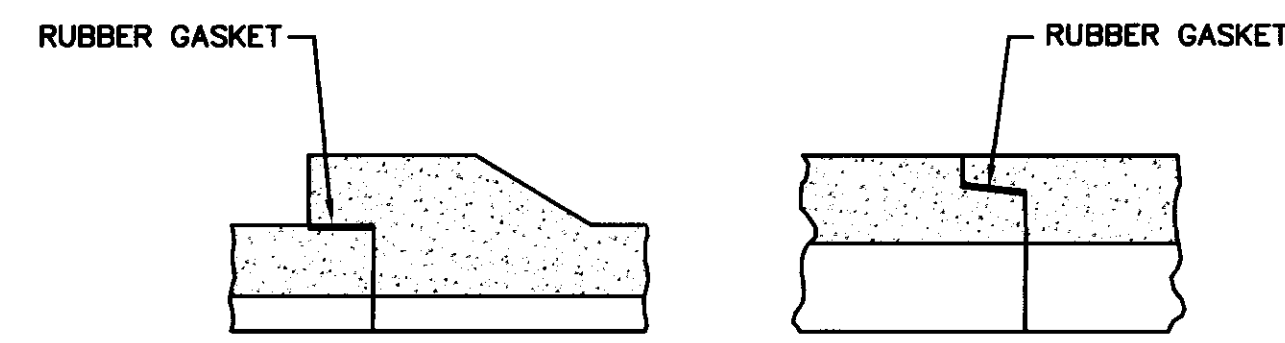
SECTION TYPE "A" MANHOLE CASTING

NOTE:
 1) USE TYPE "A" MANHOLE CASTING IN STREET R.O.W.
 2) USE HARPER NO. 2, CITY OF JACKSON STANDARD (420 LBS) OR VULCAN NO. VM-15 CITY OF JACKSON STANDARDS (420 LBS)



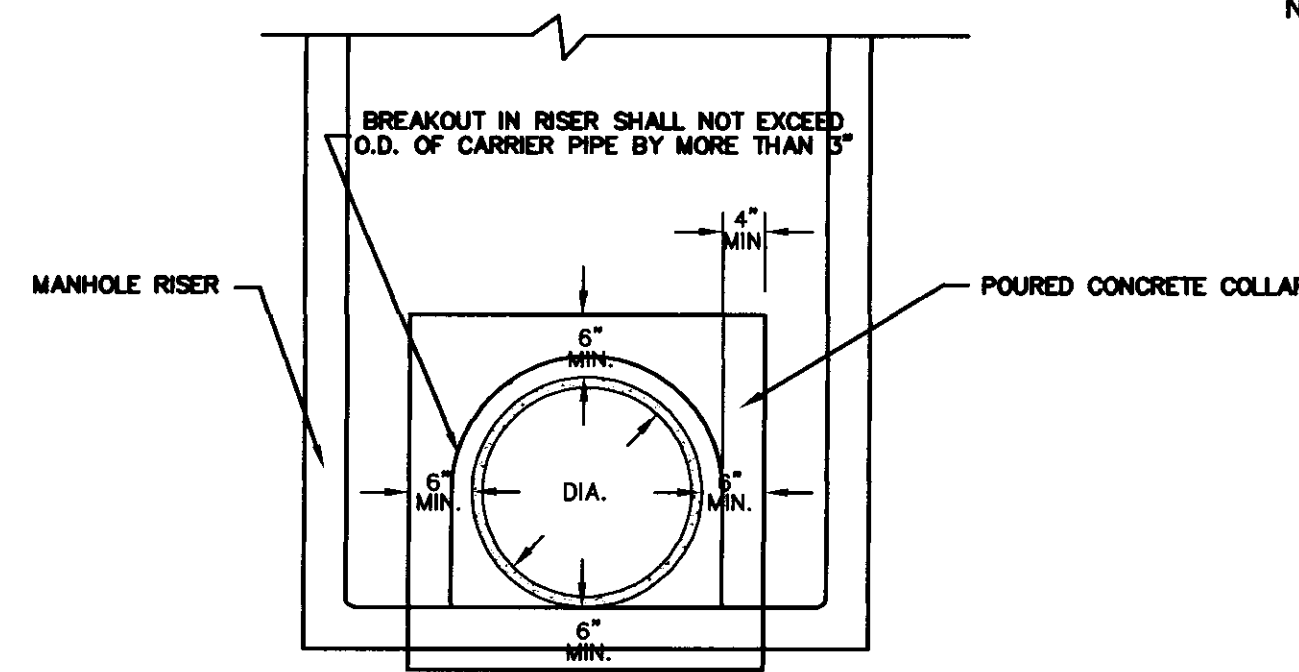
SECTION TYPE "C" MANHOLE CASTING

NOTE:
 1) USE TYPE "C" MANHOLE CASTING FOR PRECAST MANHOLE NOT IN STREET R.O.W.
 2) USE HARPER NO. 8 (330 LBS), NEENAH NO. R-1779 (300 LBS) OR VULCAN NO. VM-7 (330 LBS)

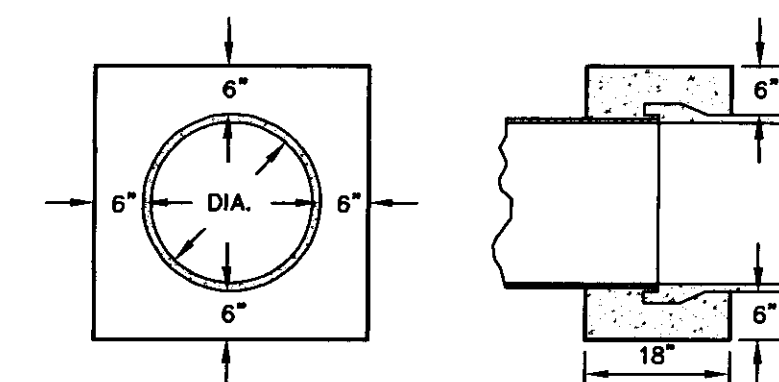


BELL & SPIGOT TONGUE & GROOVE

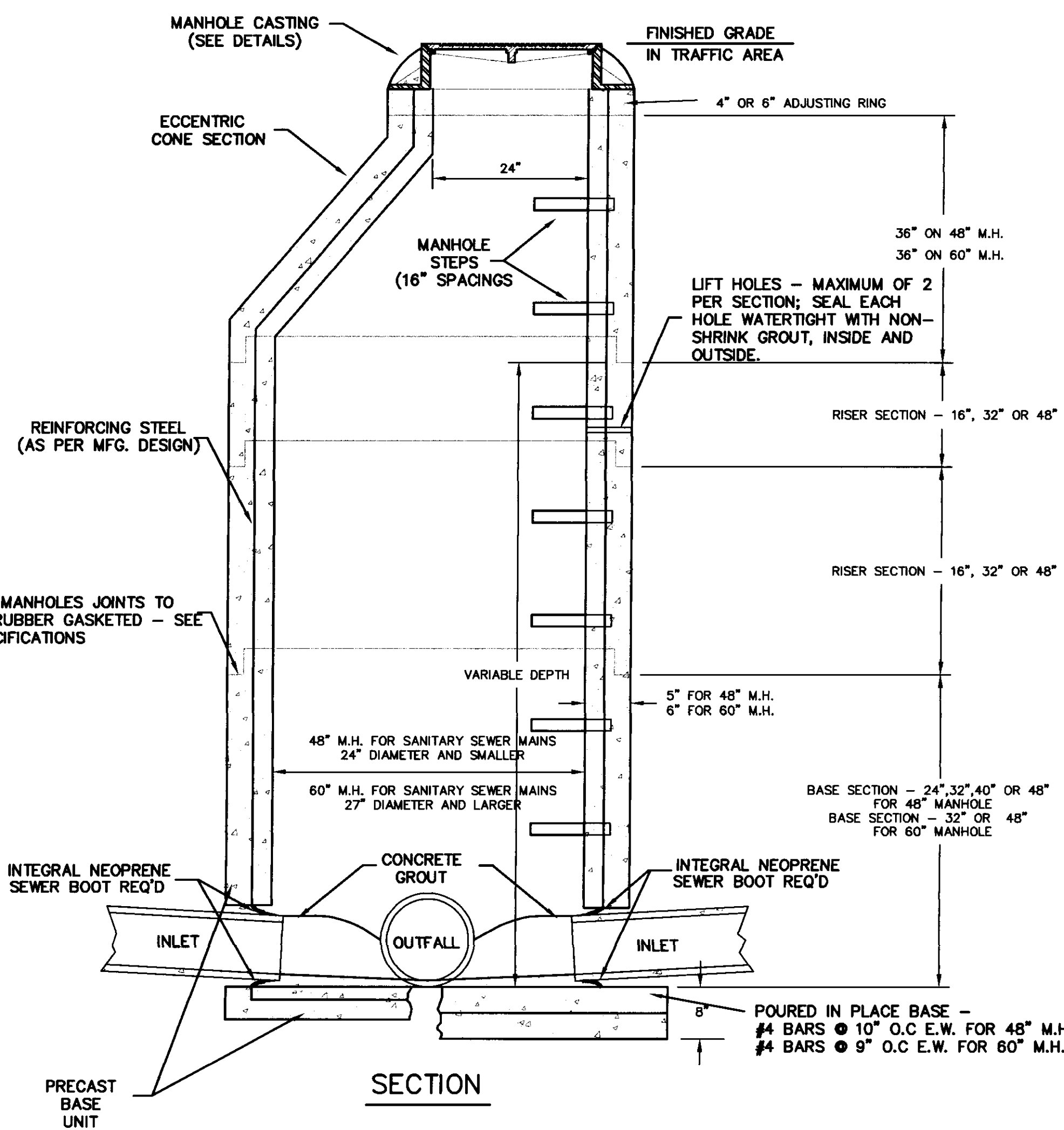
JOINT DETAILS



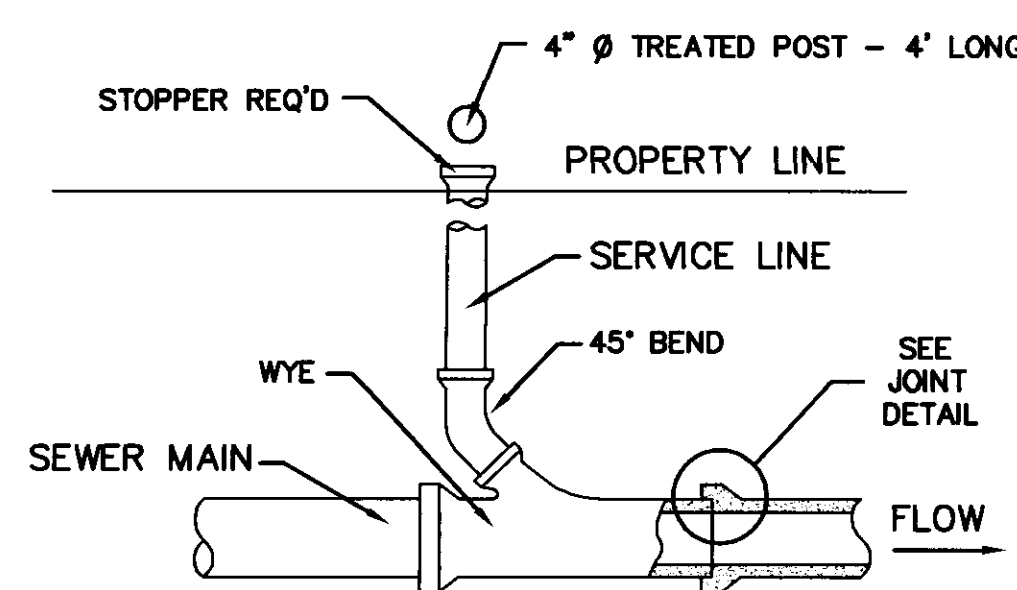
ELEVATION CONCRETE COLLAR AT MANHOLE CONNECTION



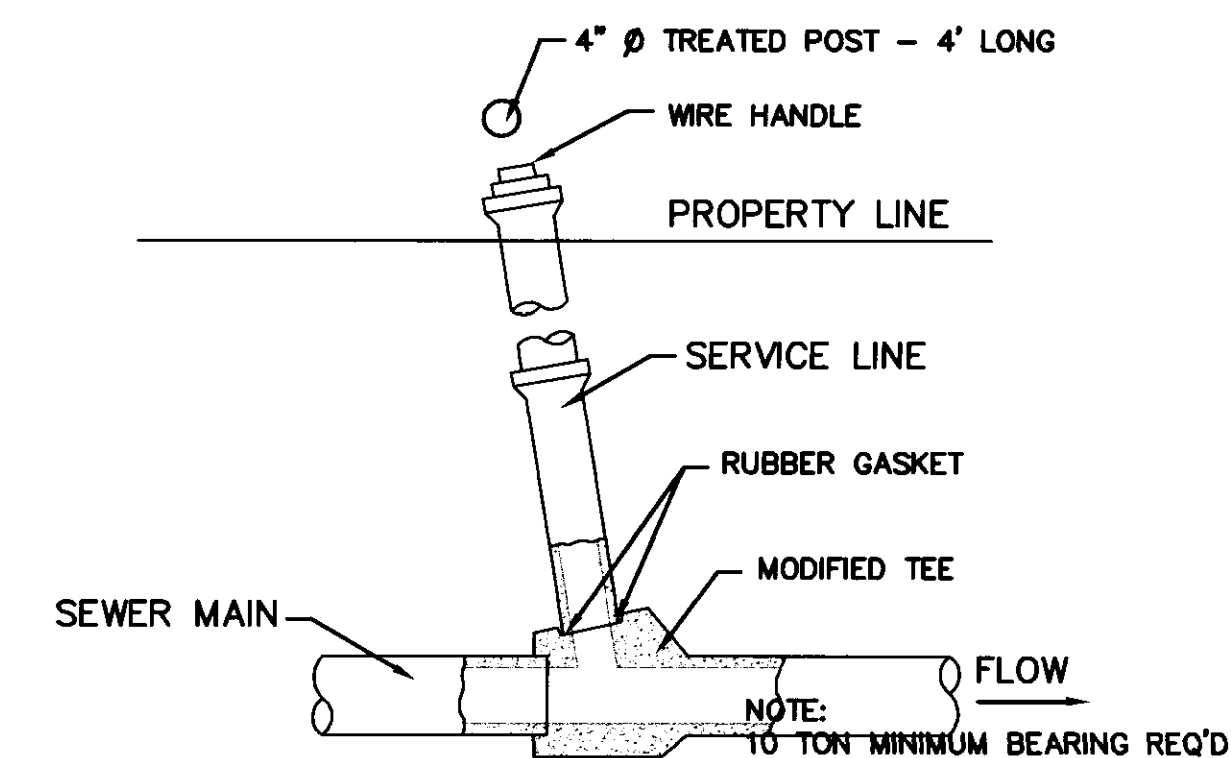
ELEVATION SECTION CONCRETE COLLAR DETAILS



SECTION PRECAST CONCRETE MANHOLE



TYPICAL SERVICE TO PROPERTY LINE WITH WYE JOINT



TYPICAL SERVICE TO PROPERTY LINE WITH MODIFIED TEE

RECORD DRAWING

C:\SDSK\PROJ\EG1-130\DWG\SEWER\13.dwg Mod Apr 17 10:58:29 2002

DESIGNED BY WAM	DATE 5/17/01		
DRAWN BY WAM	APPROVED BY MKM		
REVIEWED BY MKM	SCALE N.T.S.		
NO.	DATE	REVISIONS	BY

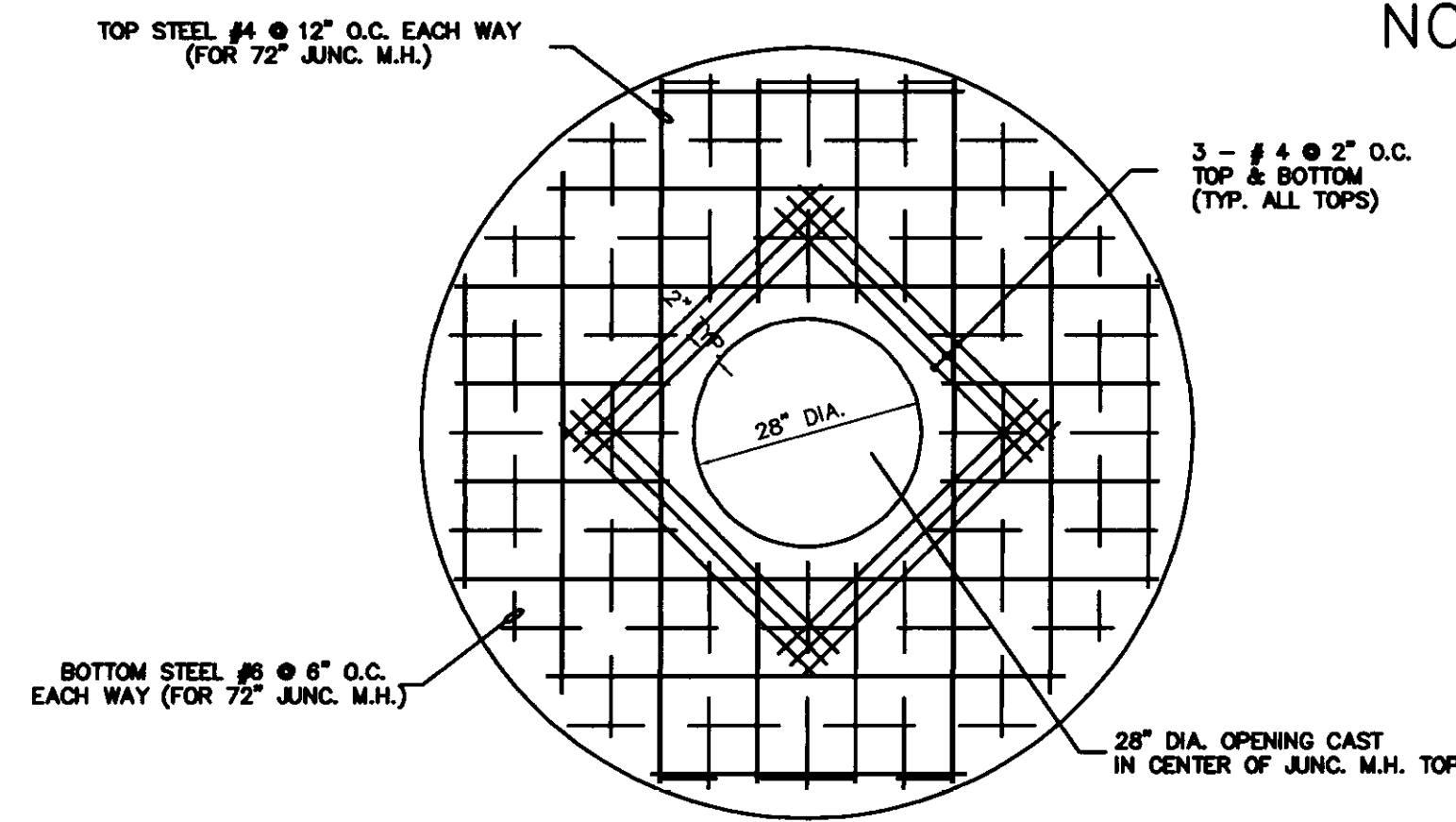


WILLIFORD, GEARHART & KNIGHT, INC.
 ENGINEERS & SURVEYORS

ARBOR CORPORATION
 COMMERCIAL DEVELOPMENT-RIDGELAND, MS
 TYPICAL SEWER DETAILS

E01-130
WGK# - E01-130
SHEET NO.
7 OF 9

NOTE: GRATE INLET: USE NEENAH CASTING MODEL # R-3406 SLOPING TOP OR EQUAL
 CURB INLET: USE DEWS CASTING MODEL # DF-2450 OR EQUAL

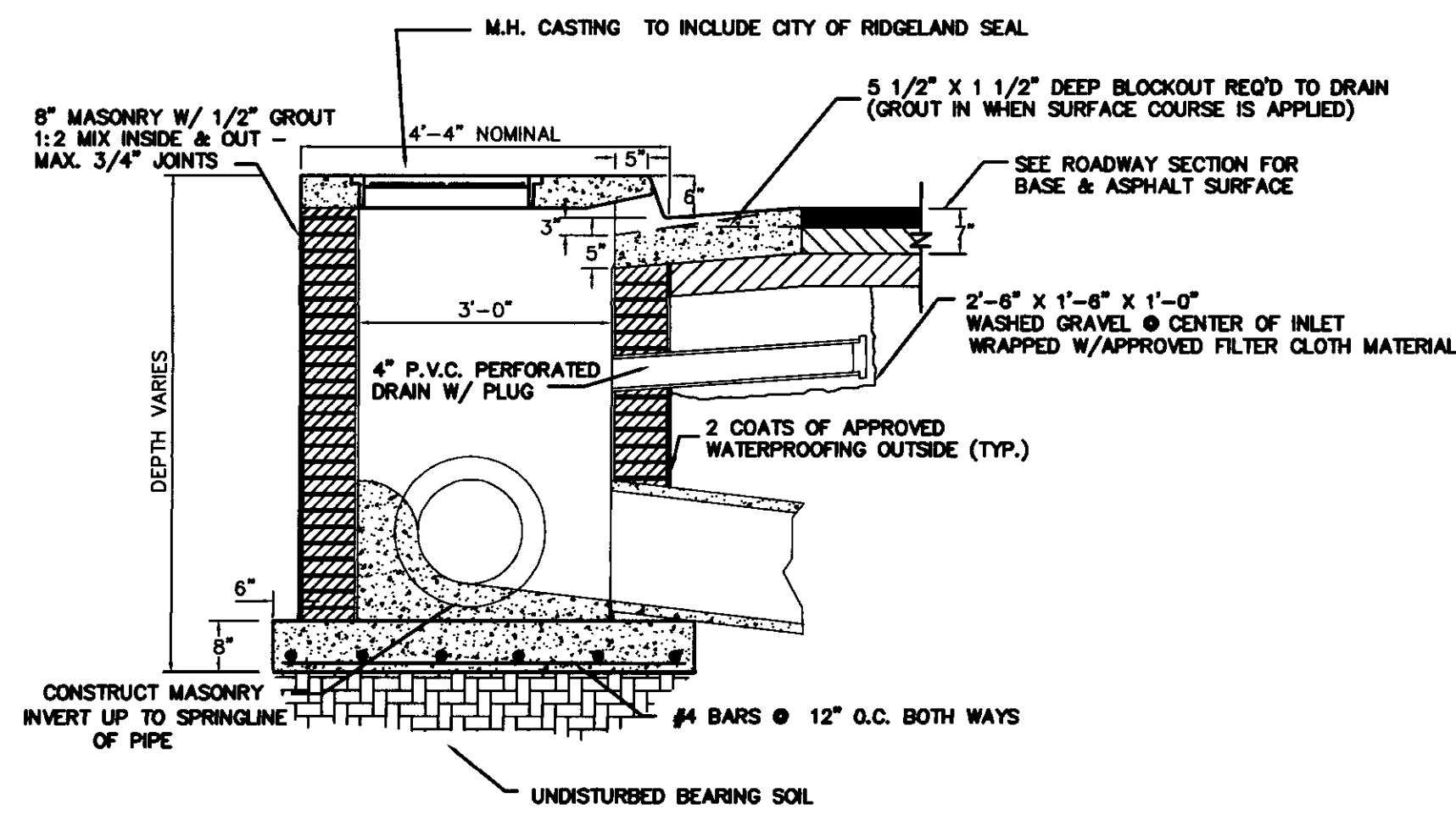


TYPICAL JUNCTION MANHOLE

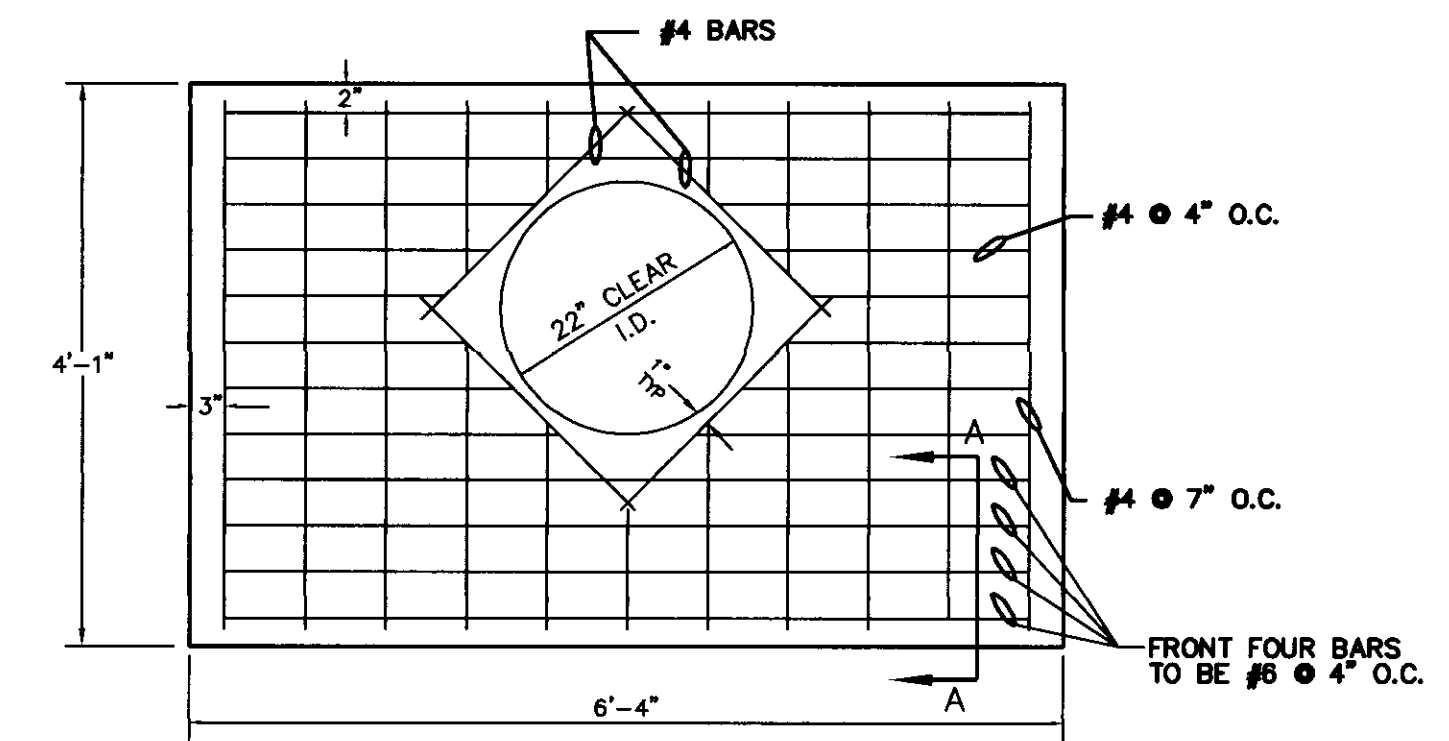
TOP

(REINF. FOR 72" JUNC. BOX SHOWN)

JUNC. M.H. DIA.	THICKNESS	TOP STEEL	BOTTOM STEEL
72"	8"	# 4 @ 12" O.C.	# 6 @ 6" O.C.
84"	9"	# 4 @ 10" O.C.	# 6 @ 5" O.C.
96"	10"	# 5 @ 8" O.C.	# 6 @ 4" O.C.
120"	12"	# 6 @ 8" O.C.	# 8 @ 4" O.C.



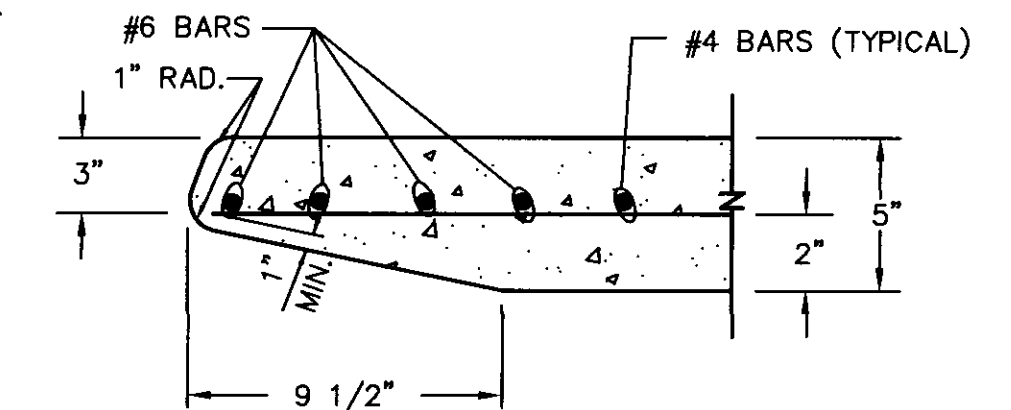
TYPE "A" INLET



PLAN

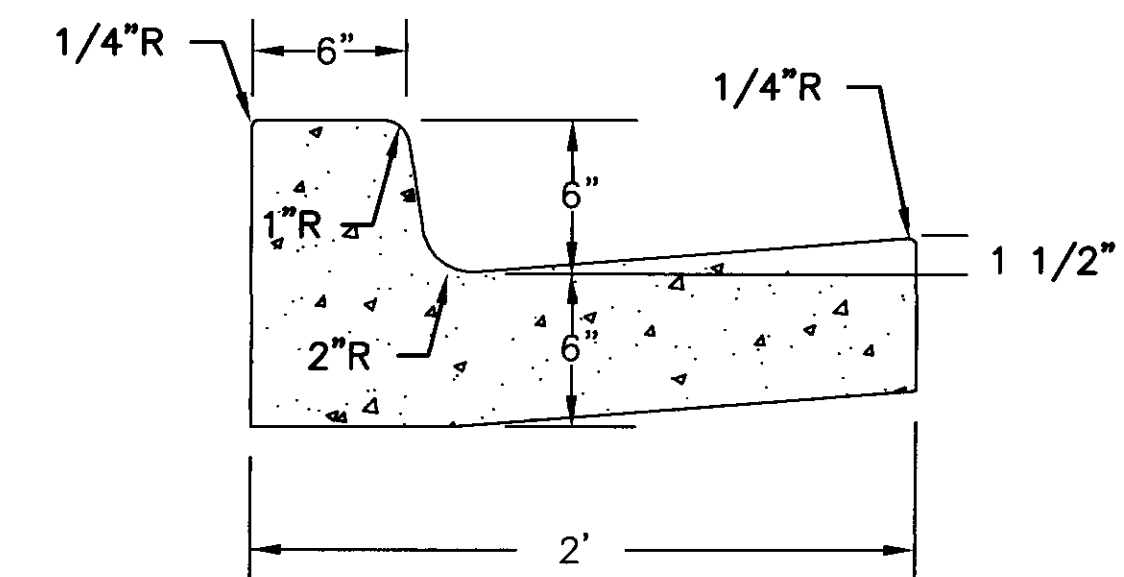


ELEVATION

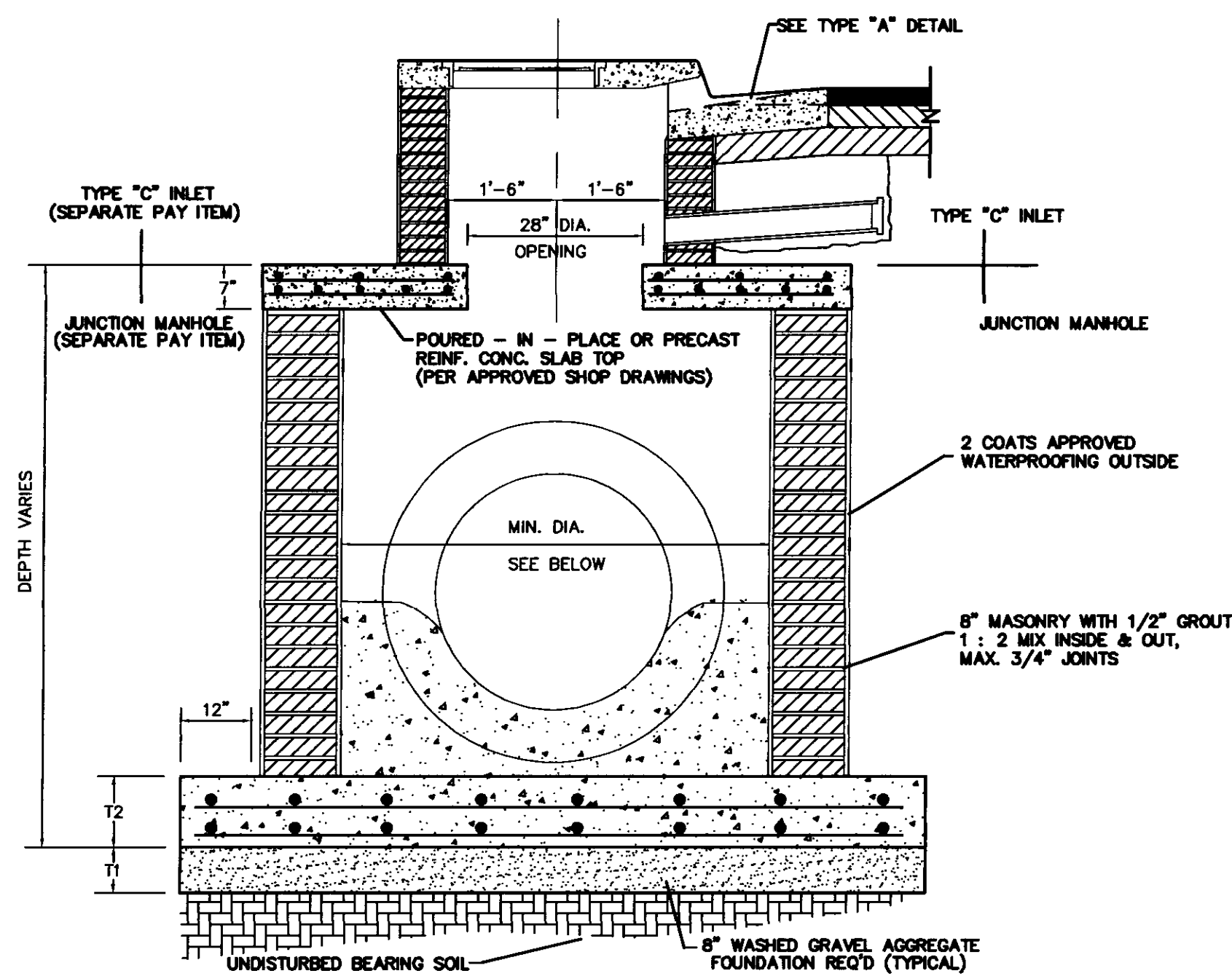


SECTION A-A

INLET TOP

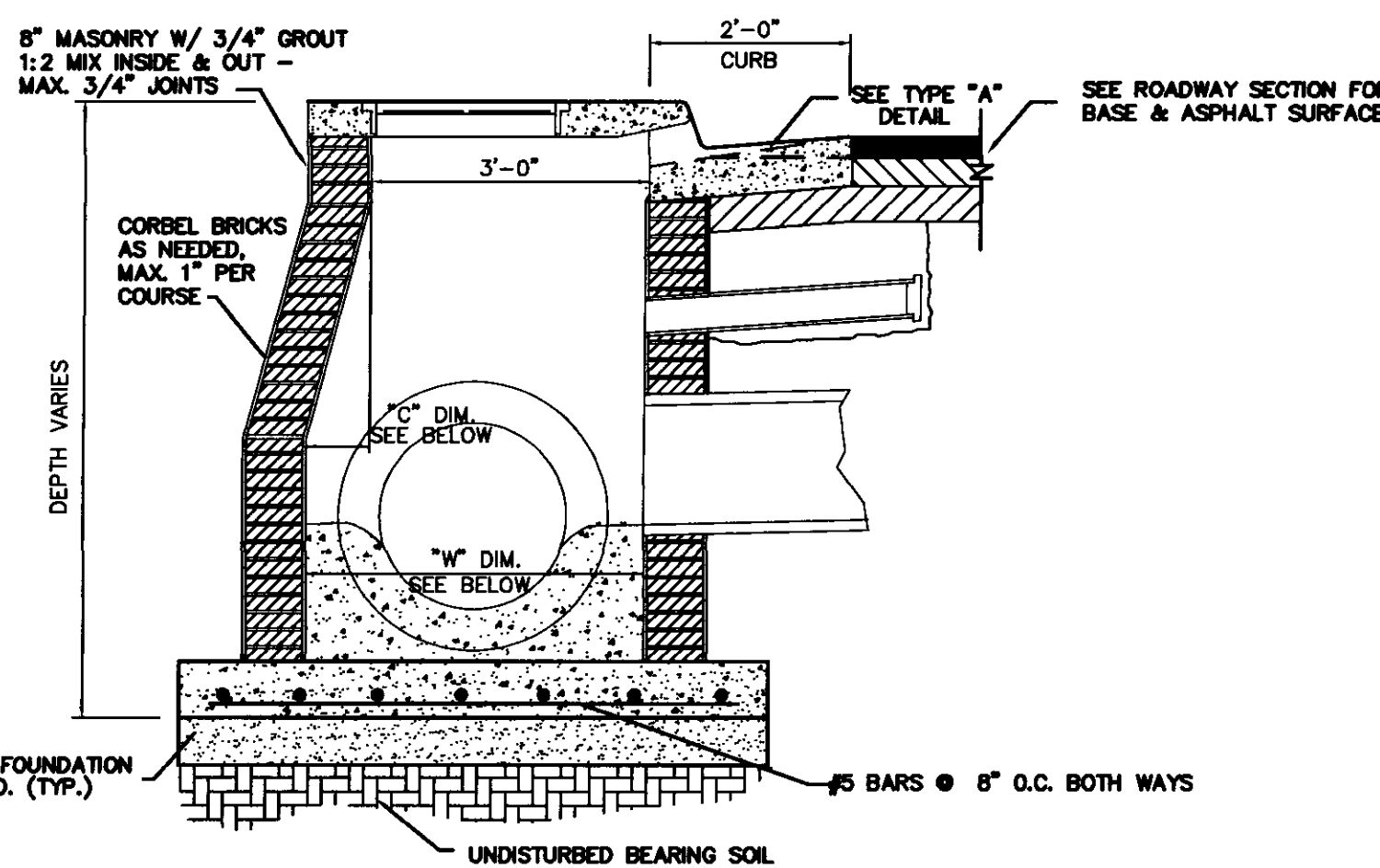


DETAIL OF COMBINATION CONCRETE CURB & GUTTER



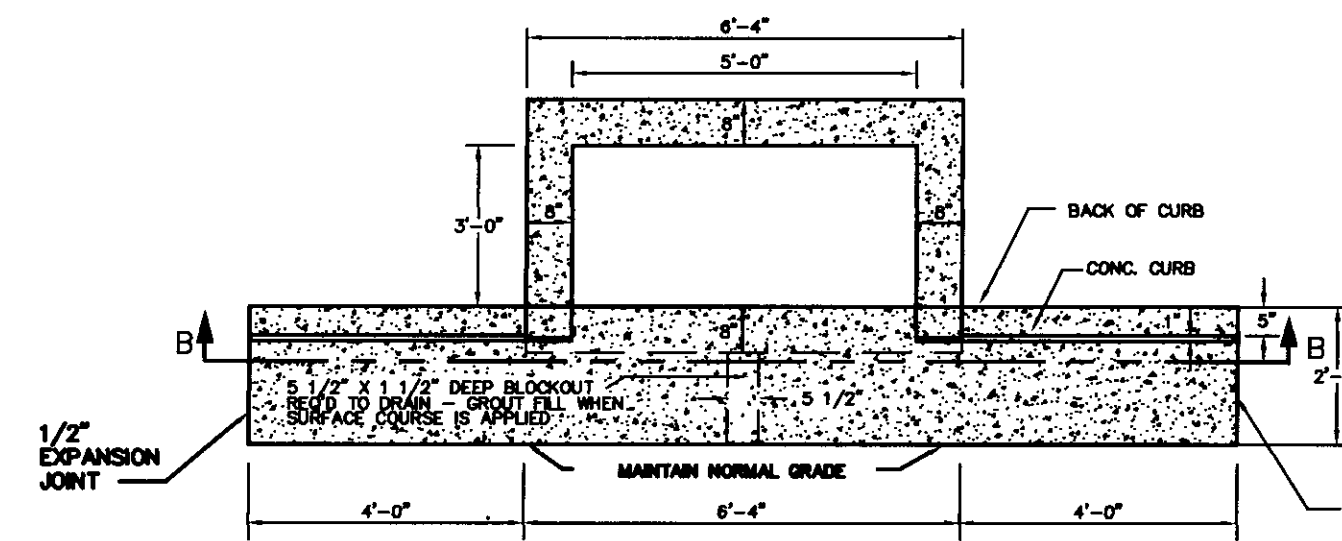
JUNCTION MANHOLE

PIPE I.D.	PIPE O.D.	MIN. T1	MIN. T2	REINF. FOR FOUNDATION
42"	52 1/2"	72"	8"	# 6 @ 6" O.C.
48"	59 1/2"	72"	8"	# 6 @ 5" O.C.
54"	66 1/2"	84"	9"	# 6 @ 4" O.C.
60"	72"	84"	9"	# 6 @ 4" O.C.
72"	88"	96"	10"	# 6 @ 4" O.C.
65" X 40"	76"	84"	9"	# 6 @ 4" O.C.
73" X 45"	85"	96"	10"	# 6 @ 4" O.C.
88" X 54"	102"	120"	12"	# 8 @ 4" O.C.



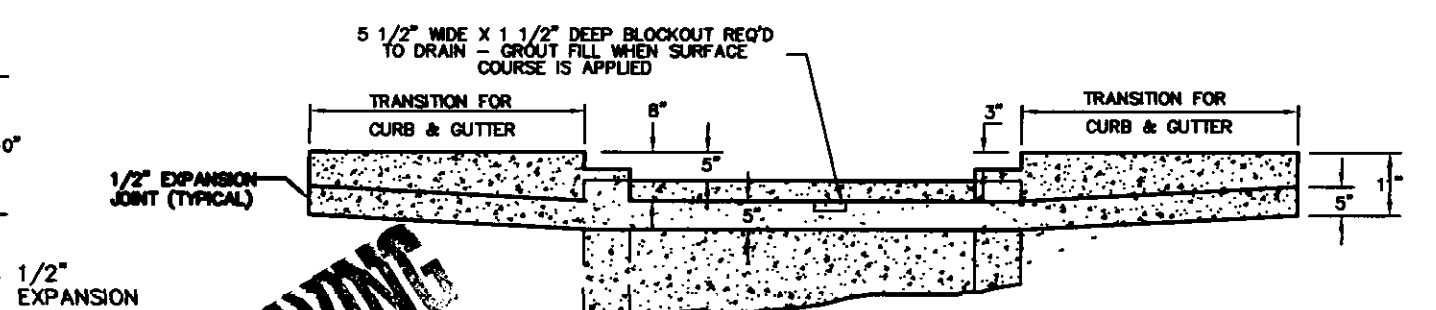
TYPE "B" INLET

PIPE I.D.	PIPE O.D.	DIM. "W"	DIM. "C"	MIN. COURSES CORBELLED
24"	35"	37"	4"	4
27"	36"	40"	4"	4
30"	39 1/2"	44"	8"	8
36"	45 1/2"	50"	14"	14



PLAN

TOP OMITTED FOR CLARITY



SECTION B-B

RECORD DRAWING

CURB INLET

DESIGNED BY WAM
 DRAWN BY WAM
 REVIEWED BY MKM

DATE 5/01/01
 APPROVED BY MKM
 SCALE N.T.S.

WILLIFORD, GEARHART & KNIGHT, INC.
 ENGINEERS & SURVEYORS

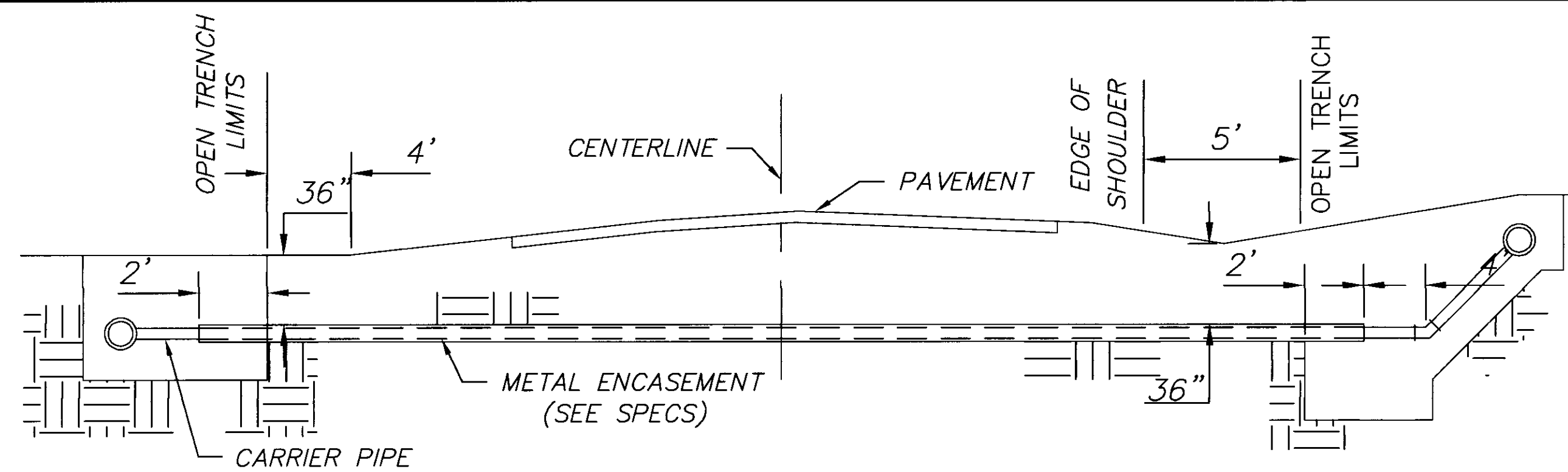
ARBOR CORPORATION
 COMMERCIAL DEVELOPMENT-RIDGELAND, MS
 TYPICAL STORM SEWER DETAILS

/STRMSEWR.DWG

WGK# - E01-130

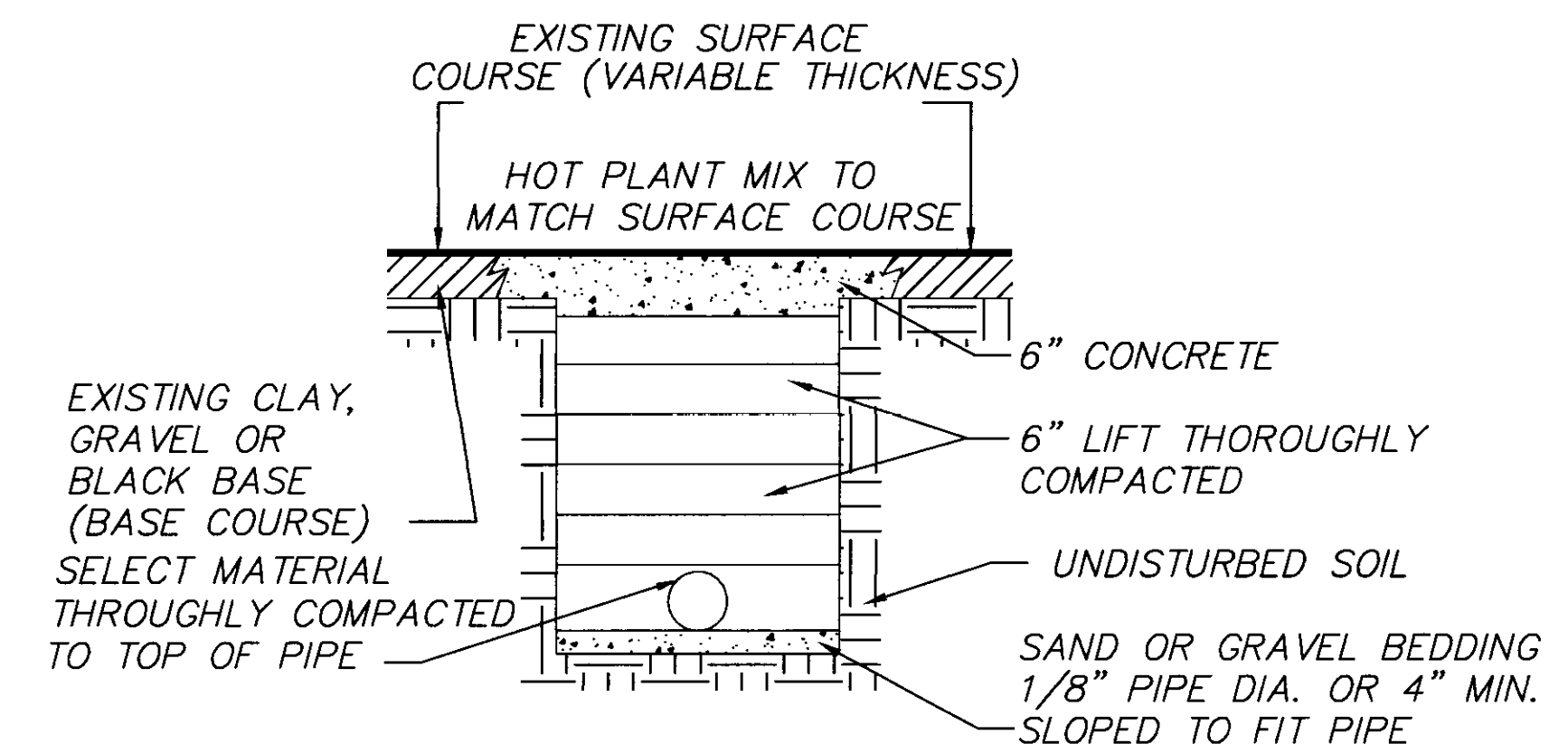
SHEET NO.

8 OF 9



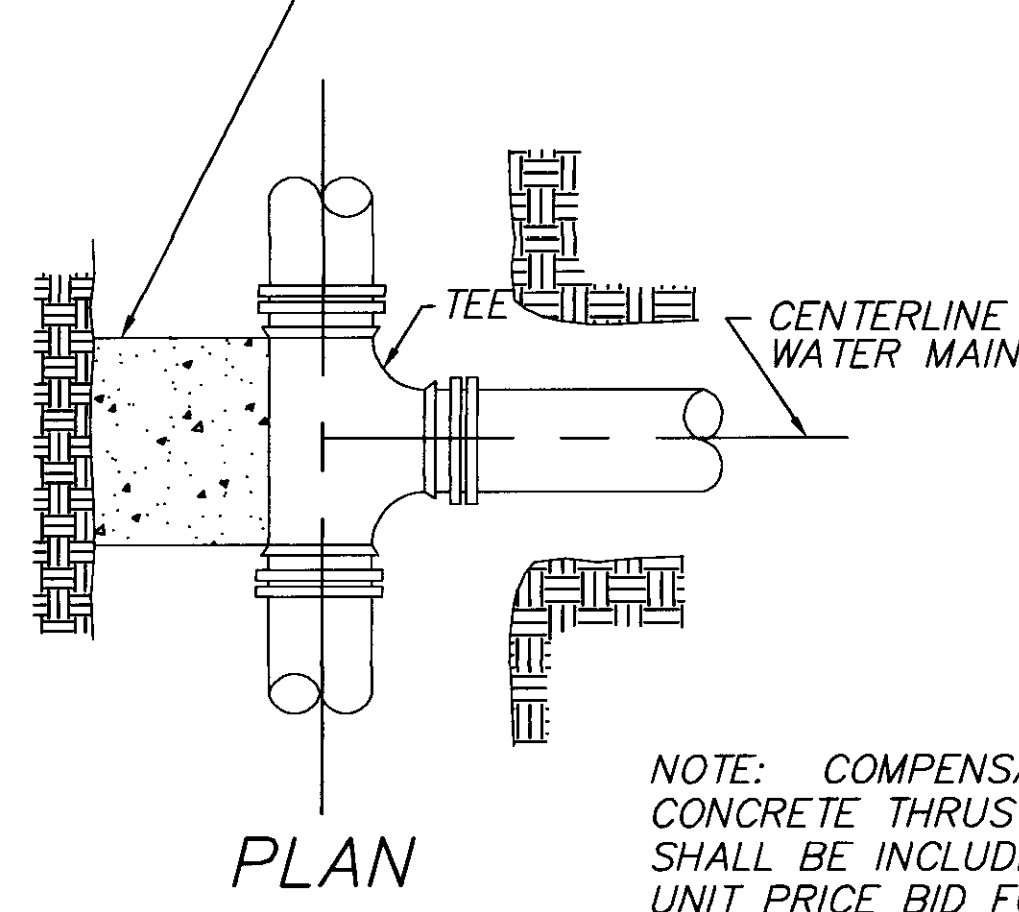
TYPICAL CASSED CROSSING

NOTE: IN AREAS WHERE CROSSING STATE/FEDERAL HIGHWAYS, SEE HIGHWAY PERMIT FOR SPECIFIC AND/OR ADDITIONAL INFORMATION.



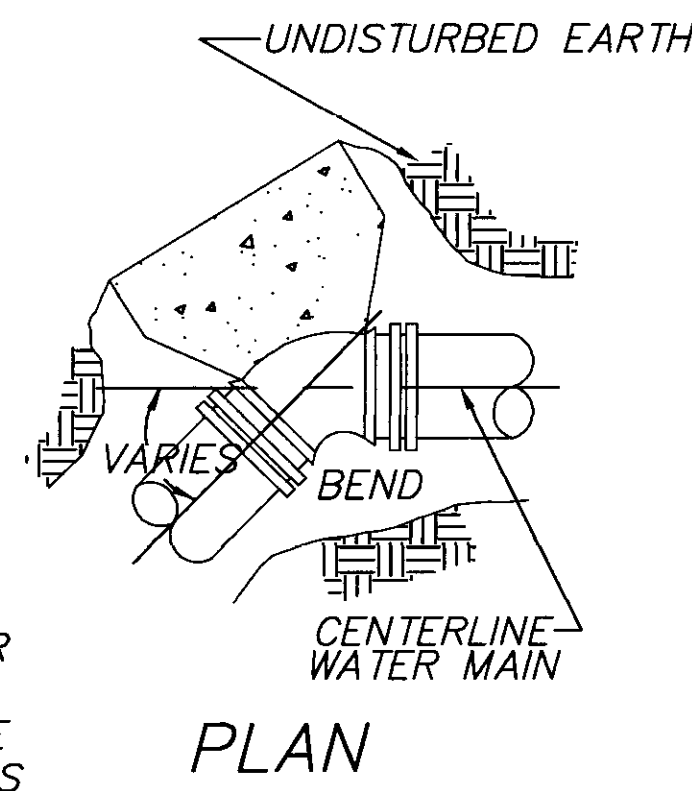
STREET REPAIR OF OPEN CUT

CONCRETE THRUST BLOCK (3000 PSI CONCRETE)

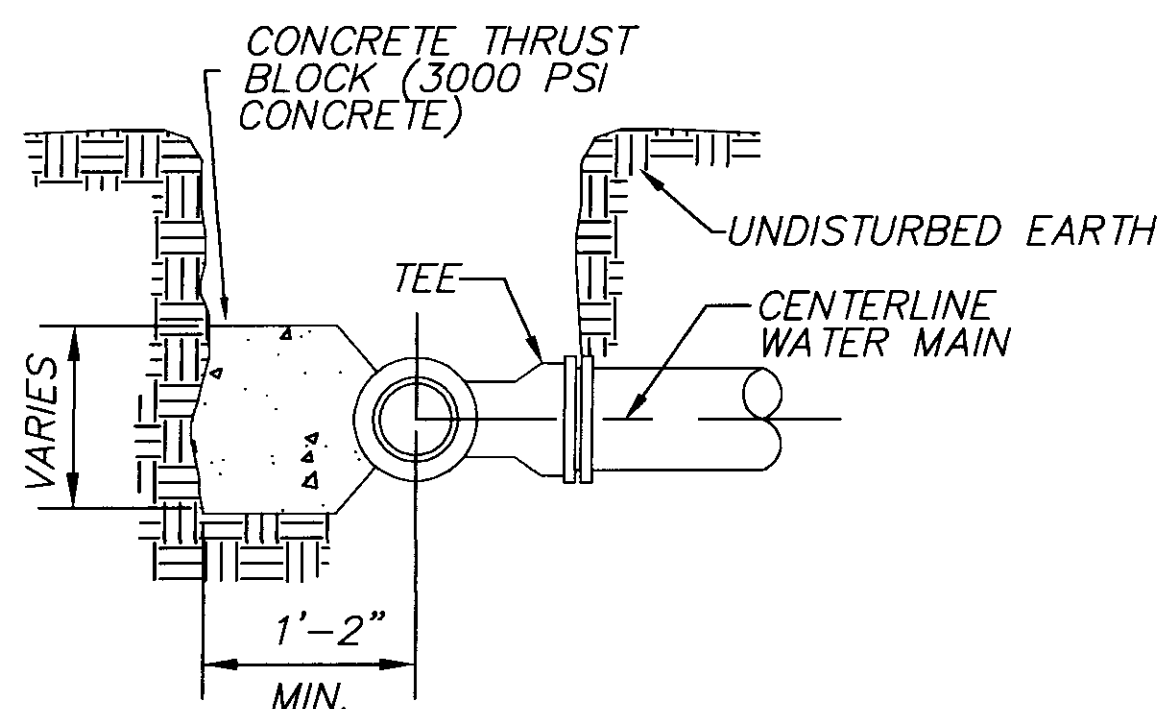


PLAN

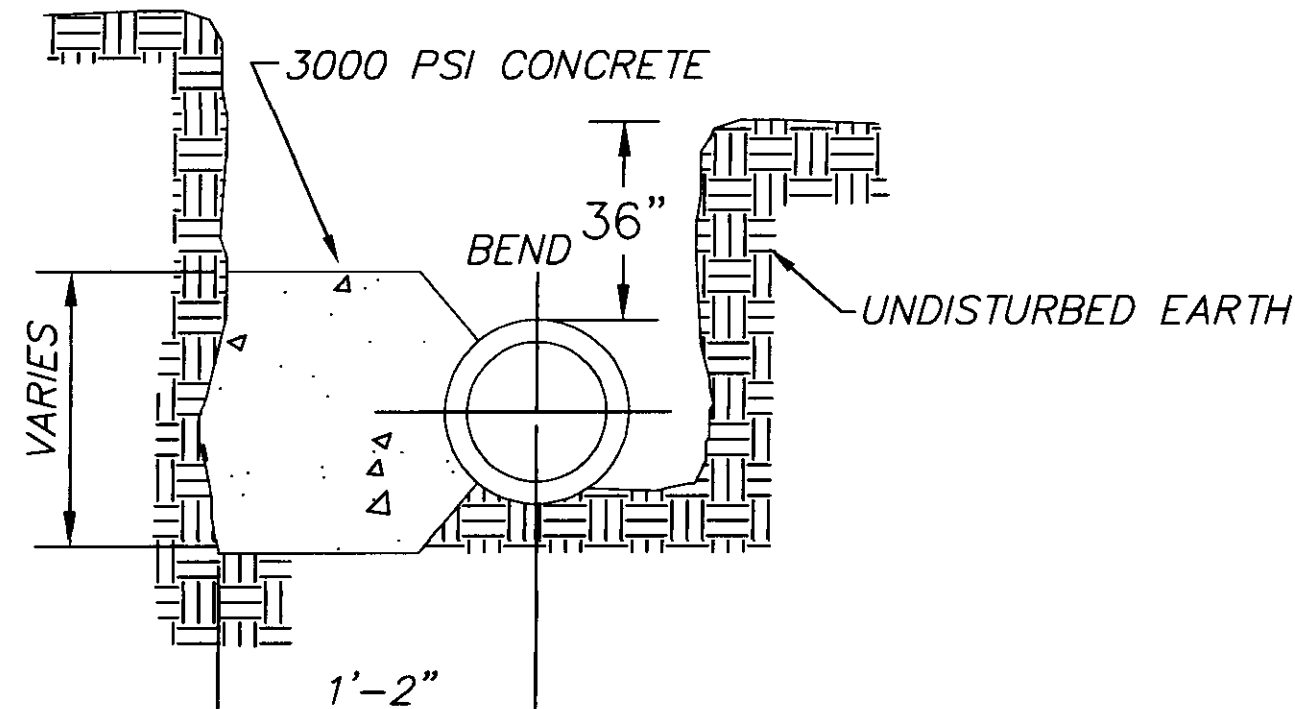
NOTE: COMPENSATION FOR CONCRETE THRUST BLOCKS SHALL BE INCLUDED IN THE UNIT PRICE BID FOR VALVES, FIRE HYDRANTS AND FITTINGS.



PLAN

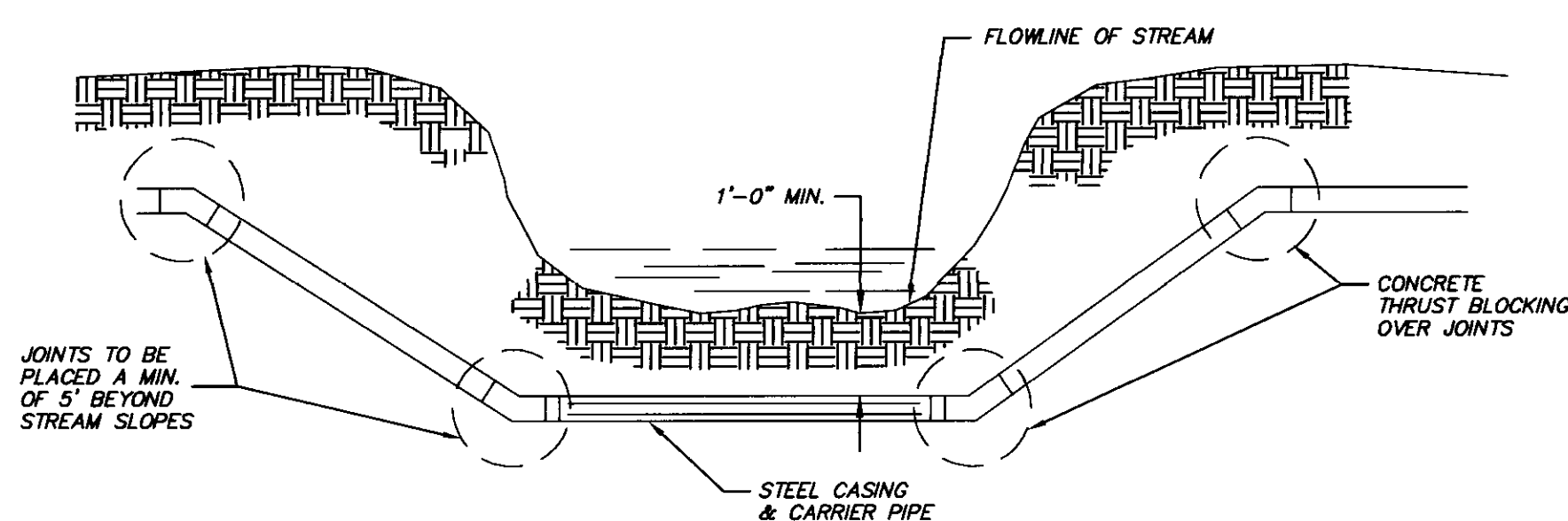


SECTION

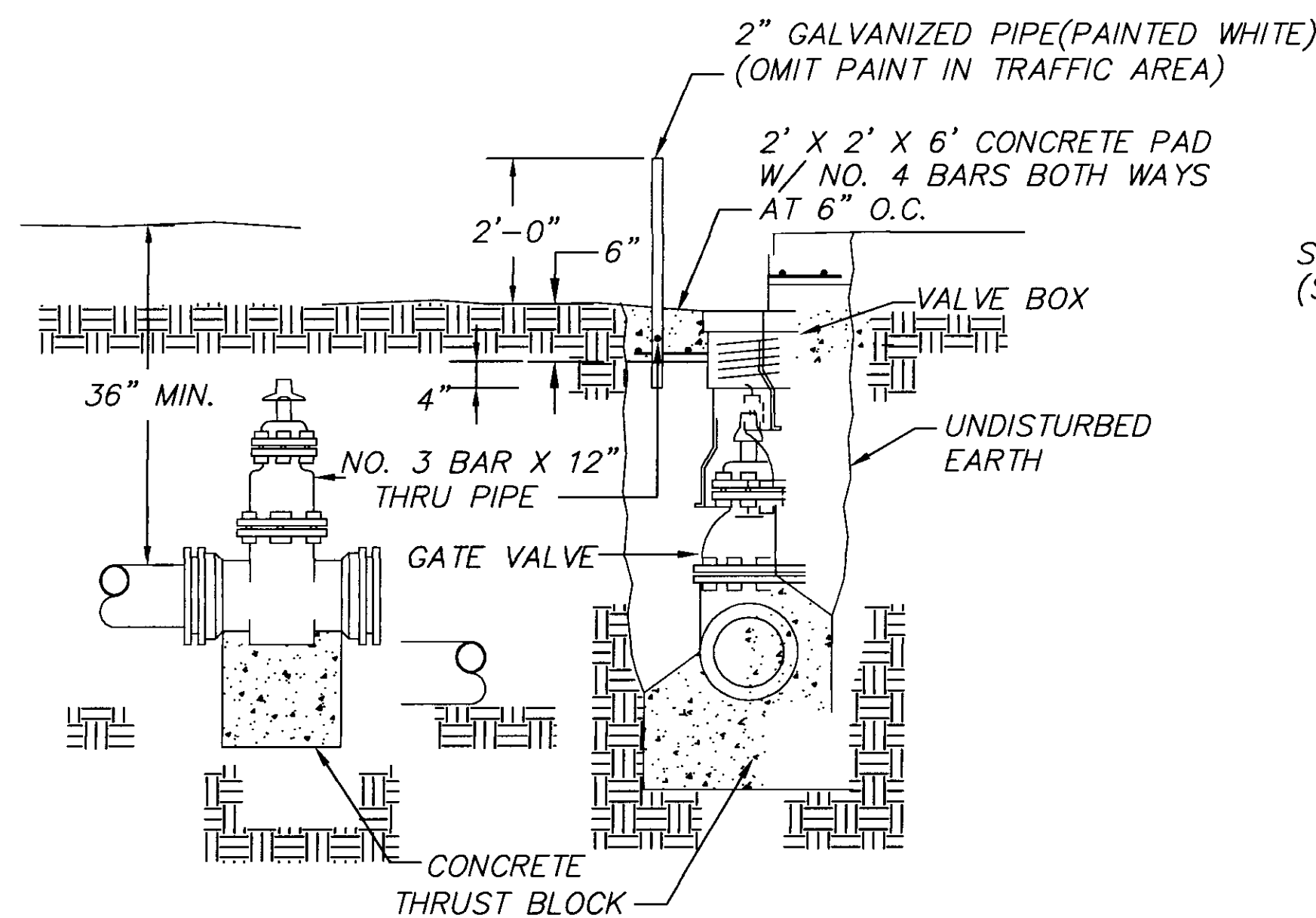


SECTION

BLOCKING DETAILS FOR TEE'S & BENDS

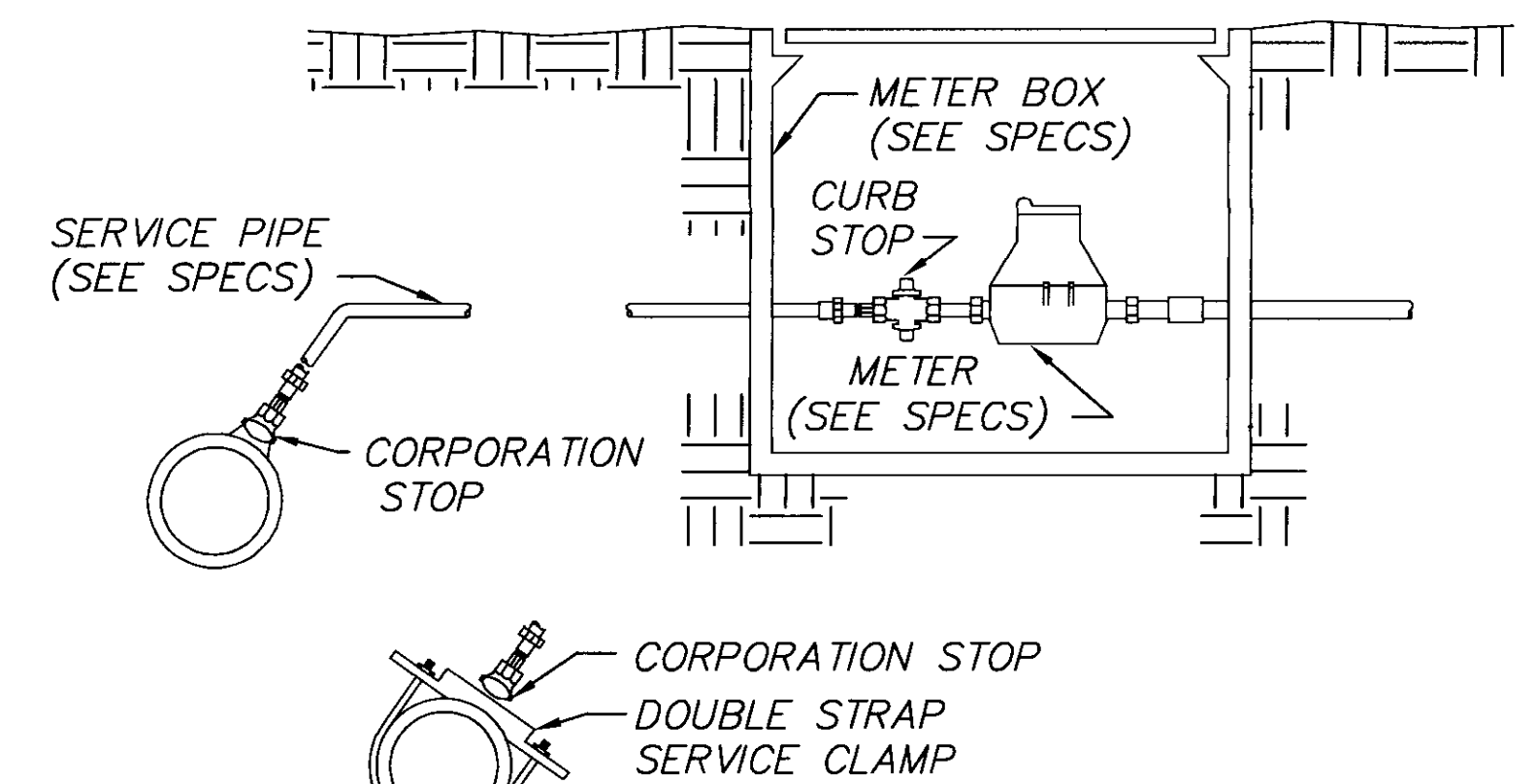


TYPICAL STREAM CROSSING

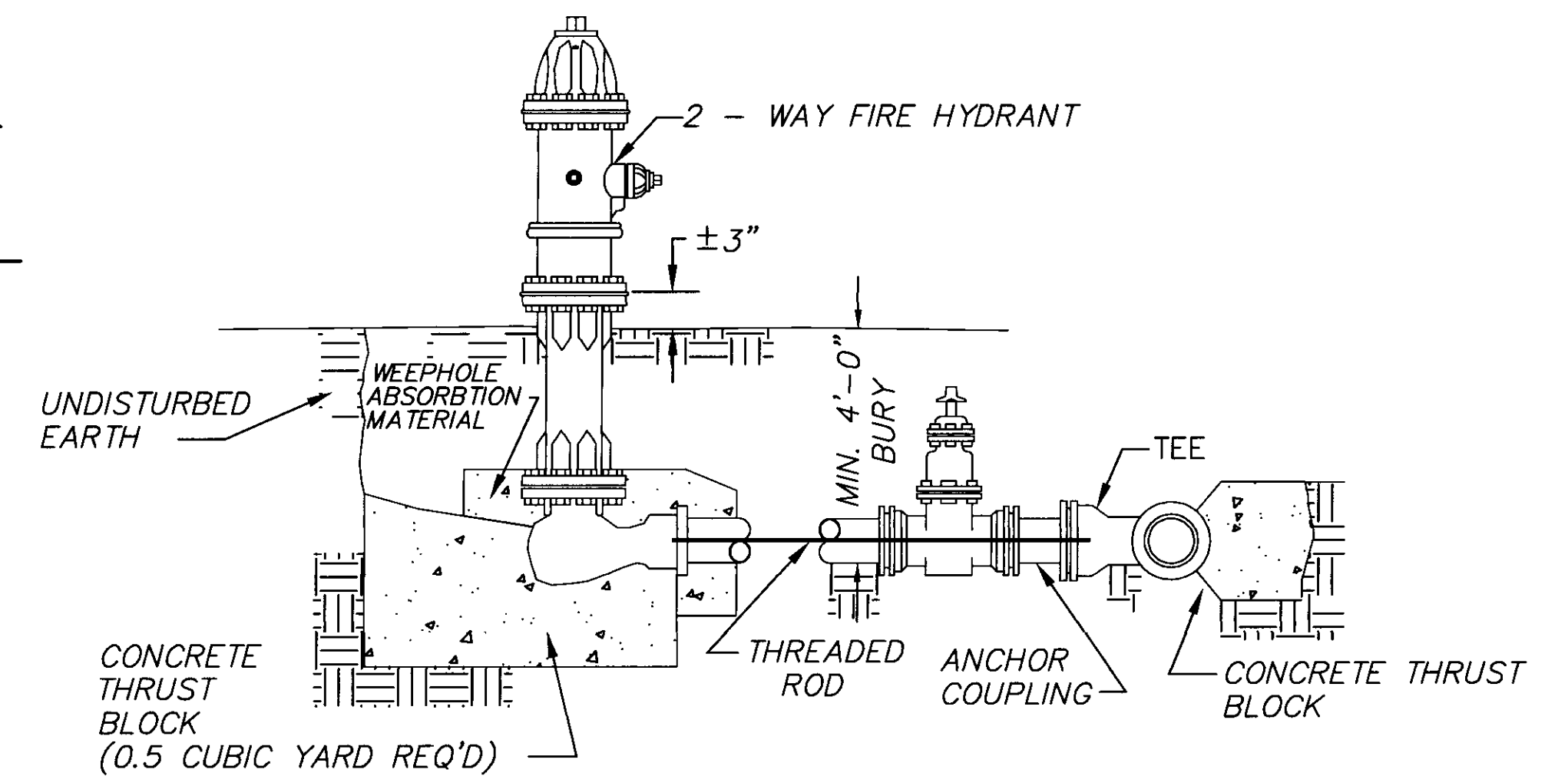


ELEVATION SECTION

TYPICAL VALVE & BOX

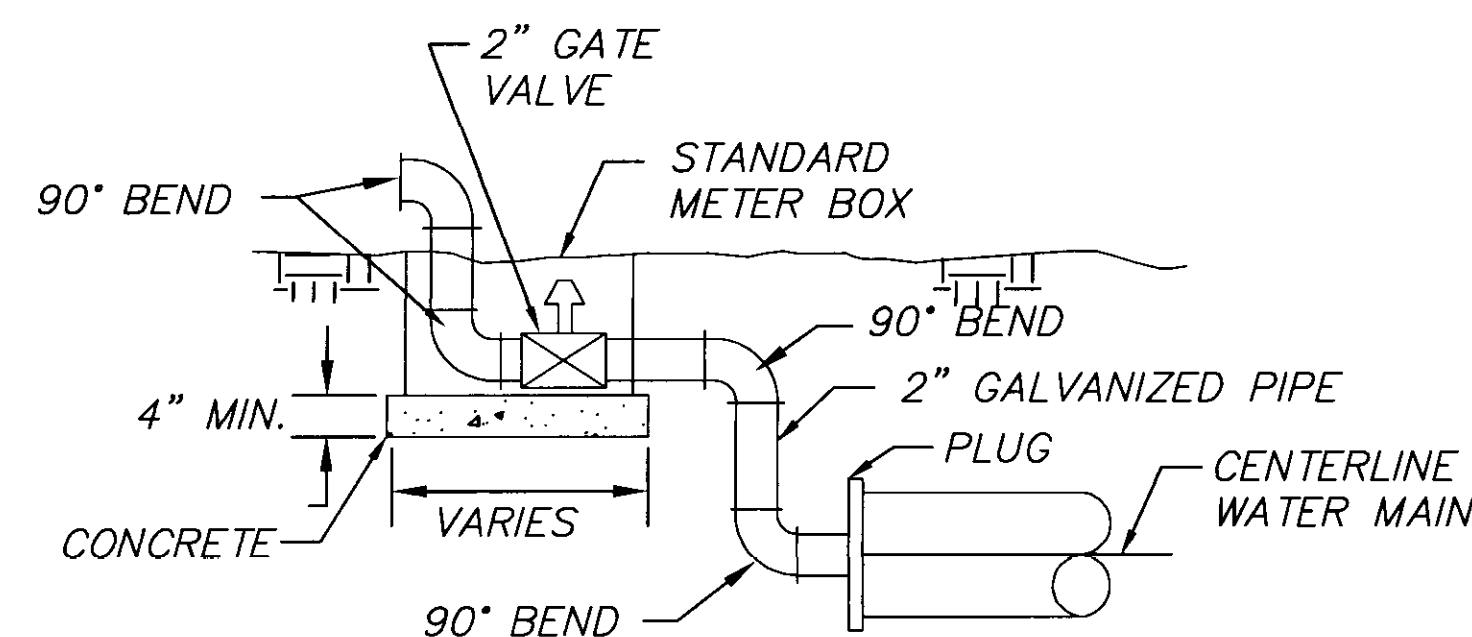


TYPICAL SERVICE ASSEMBLY



TYPICAL FIRE HYDRANT

NOTES:
 1. ALL WATER MAIN CONNECTIONS SHALL BE RODDED WITH ALL-STEEL THREADED RODS, 3/4" DIA. MINIMUM, UNLESS OTHERWISE DIRECTED BY THE ENGINEER.
 2. WHEN FIRE HYDRANTS ARE CONNECTED TO AN 8" DIAMETER OR LARGER WATER MAIN, GATE VALVES SHALL BE REQUIRED.



TYPICAL 2" BLOW-OFF DETAIL

C:\SDSK\PROJ\E01-130\DWG\Metrdtls.dwg Wed Apr 17 17:01:53 2002

NO.	DATE	REVISIONS	BY

DESIGNED BY W.A.M.	DATE 5/17/01
DRAWN BY W.A.M.	APPROVED BY MKM
REVIEWED BY MKM	SCALE N.T.S.



WILLIFORD, GEARHART & KNIGHT, INC.
 ENGINEERS & SURVEYORS

ARBOR CORPORATION
 COMMERCIAL DEVELOPMENT-RIDGELAND, MS
 TYPICAL WATER DETAILS

/E01-130/WATRDTLS.DWG
WGK# - E01-130
SHEET NO.
9 OF 9

RECORD DRAWING