

# THE TOWNSHIP AT COLONY PARK

## STREET AND SITE UTILITIES PHASE II COMMERCIAL

### CITY OF RIDGELAND, MS

OWNER:  
THE TOWNSHIP LAND CO., LLC

BY:  
KERIOTH CORPORATION

PREPARED BY:  
DIVERSIFIED CONSULTANTS



SHEET INDEX	
TITLE	SHEET NO.
COVER SHEET	1
STREET LAYOUT	4
WATER AND SANITARY SEWER LAYOUT	5
SOUTHLAKE AVE - P/P	6
SOUTHLAKE AVE - P/P	7
TOWNSHIP AVE - P/P	8
MIDTOWNE EXTENDED - MIDTOWNE AVE - P/P	9
SOUTHTOWNE AVE - P/P	10
MIDTOWNE TO SOUTHLAKE - P/P	11

SEPTEMBER 2006

**DCI** DIVERSIFIED CONSULTANTS, INC.  
CONSULTING ENGINEERS ... CITY, COUNTY, AND REGIONAL PLANNERS

395 EDGEWOOD TERRACE  
JACKSON, MS 39206

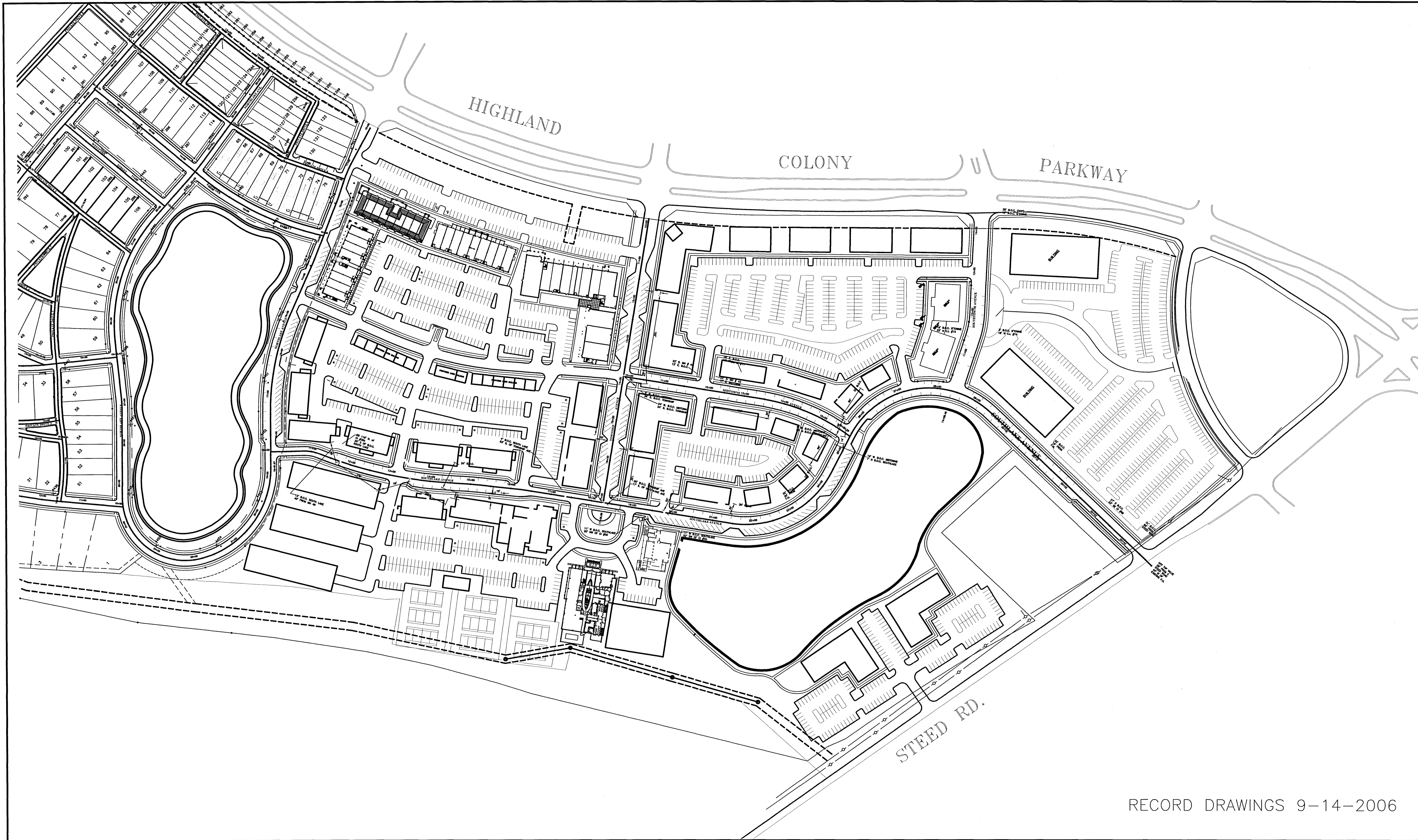
D. SCOTT BONNER - ENGINEER

RECORD DRAWINGS 9-14-2006

PCP-08085

M:\kerioth\_Corp\kerioth phase 2.com\tag\Commercial Phase 2 Rec.dwg\_coversheet\_1/22/2007 9:05:35 AM  
 jphrgent





RECORD DRAWINGS 9-14-2006

**DCI** **DIVERSIFIED CONSULTANTS, INC.**  
 CONSULTING ENGINEERS ... CITY, COUNTY, AND REGIONAL PLANNERS  
 395 EDGEWOOD TERRACE  
 JACKSON, MS 39206

This document, and the ideas and designs incorporated herein, as an instrument of professional services, is the property of DIVERSIFIED CONSULTANTS, INC. and is not to be used, in whole or part, for any other project without the written authority of DIVERSIFIED CONSULTANTS, INC.

**STREETS AND SITE UTILITIES**  
**PHASE 2 COMMERCIAL**  
**KERIOTH CORPORATION**

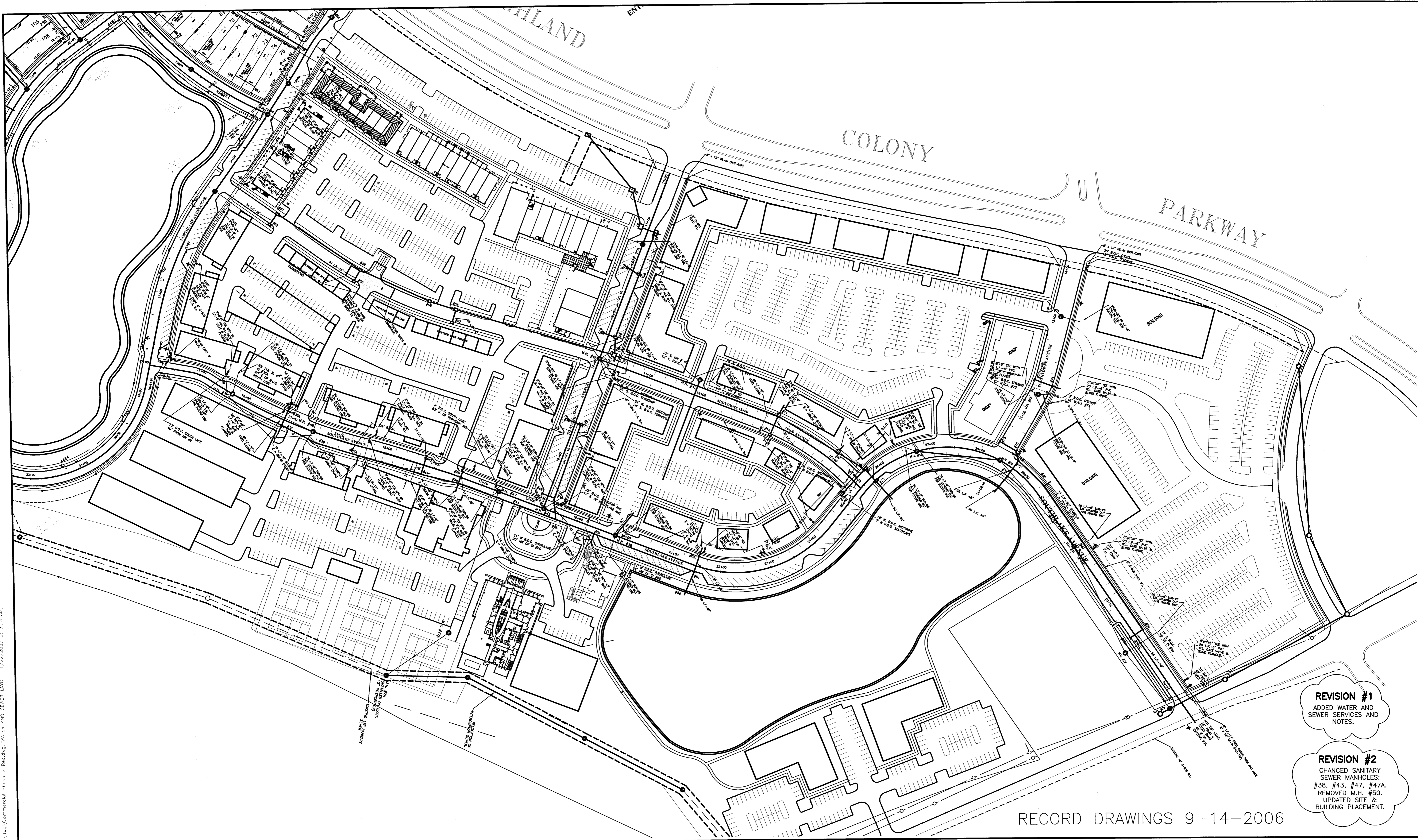
REVISIONS		
NO.	DATE	BY
1		
2		
3		
4		
5		
6		

SCALE  
**1" = 100'**  
 DATE  
 APPROVED BY **DSB**  
 DRAWN BY **AUJ**  
 CHECKED BY **JHG**

SHEET TITLE  
**STREET LAYOUT**  
 FILE NAME  
 SHEET NO. **4**

M:\kerioth-Corp\kerioth - phase 2 - com\dwg\Commercial\Phase 2 Record.dwg - OVERALL STREET LAYOUT - 1/22/2007 9:08:08 AM, Jhongran





**REVISION #1**  
 ADDED WATER AND SEWER SERVICES AND NOTES.

**REVISION #2**  
 CHANGED SANITARY SEWER MANHOLES: #38, #43, #47, #47A. REMOVED M.H. #50. UPDATED SITE & BUILDING PLACEMENT.

RECORD DRAWINGS 9-14-2006

**DCI** DIVERSIFIED CONSULTANTS, INC.  
 CONSULTING ENGINEERS ... CITY, COUNTY, AND REGIONAL PLANNERS  
 395 EDGEWOOD TERRACE  
 JACKSON, MS 39206

This document, and the ideas and designs incorporated herein, as an instrument of professional services, is the property of DIVERSIFIED CONSULTANTS, INC. and is not to be used, in whole or part, for any other project without the written authority of DIVERSIFIED CONSULTANTS, INC.

**STREETS AND SITE UTILITIES  
 PHASE 2 COMMERCIAL  
 KERIOTH CORPORATION**

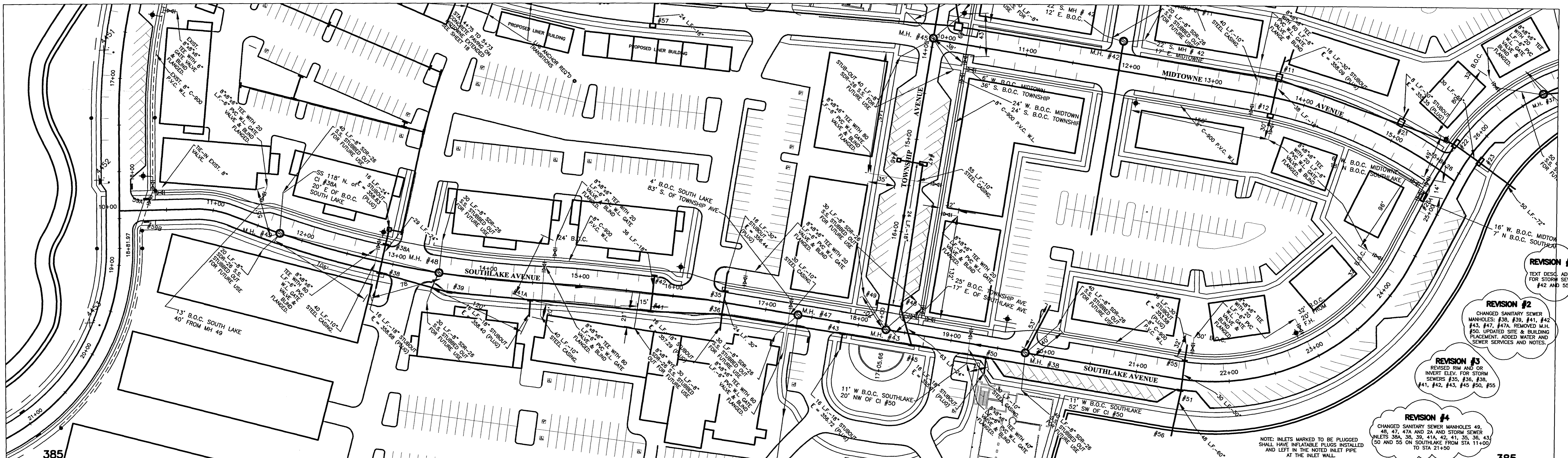
REVISIONS		
NO.	DATE	BY
1	12/28/2004	JHG
2	1/06/2005	N.O.H.
3		
4		
5		
6		

SCALE: 1" = 80'  
 DATE:  
 APPROVED BY: **DSB**  
 DRAWN BY: **AUJ**  
 CHECKED BY: **JHG**

SHEET TITLE: **WATER AND, SANITARY SEWER LAYOUT**  
 FILE NAME: SHEET NO. **5**

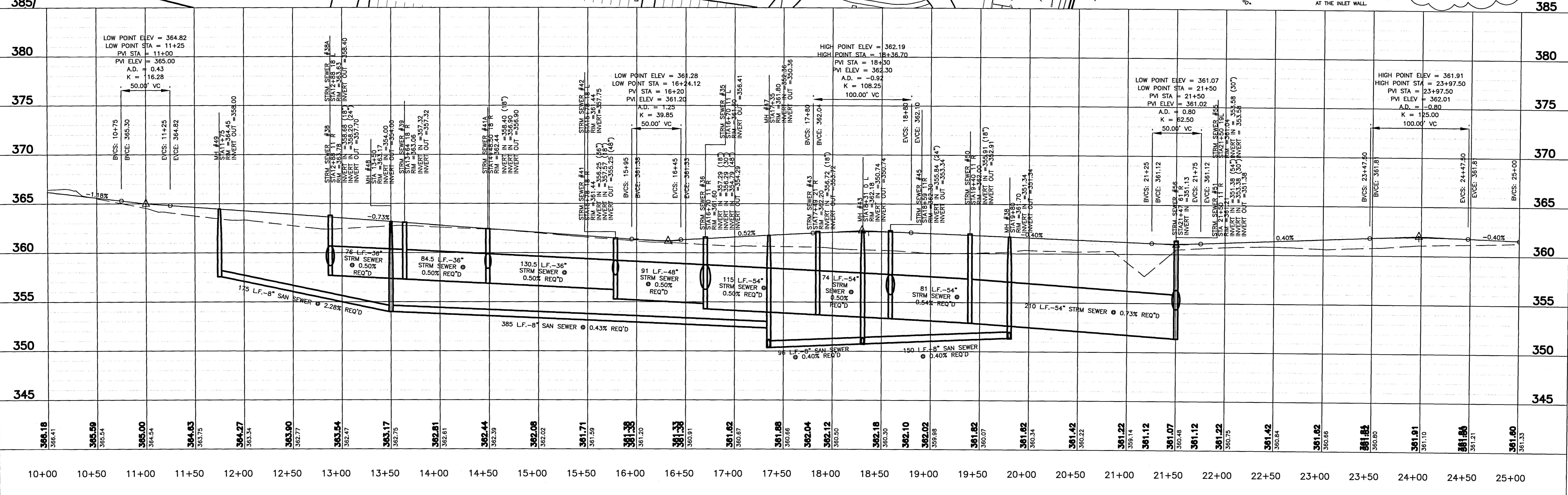
C:\Users\jvh\Documents\Projects\Phase 2 Commercial\Phase 2 Record\Water and Sewer Layout.dwg, 1/22/2007 9:13:23 AM, jvh





- REVISION #1**  
TEXT DESC. ADDED FOR STORM SEWER #42 AND #55
- REVISION #2**  
CHANGED SANITARY SEWER MANHOLES: #38, #39, #41, #42, #43, #47, #47A, REMOVED M.H. #50. UPDATED SITE & BUILDING PLACEMENT. ADDED WATER AND SEWER SERVICES AND NOTES.
- REVISION #3**  
REVISED RIM AND OR INVERT ELEV. FOR STORM SEWERS #35, #36, #38, #41, #42, #43, #45, #50, #55
- REVISION #4**  
CHANGED SANITARY SEWER MANHOLES: #49, #49, #47, #47A AND 2A AND STORM SEWER INLETS: #38A, #39, #41A, #42, #41, #35, #36, #43, #50 AND #55 ON SOUTHLAKE FROM STA 11+00 TO STA 21+50

NOTE: INLETS MARKED TO BE PLUGGED SHALL HAVE INFLATABLE PLUGS INSTALLED AND LEFT IN THE NOTED INLET PIPE AT THE INLET WALL.



RECORD DRAWINGS 9-14-2006

**DCI** **DIVERSIFIED CONSULTANTS, INC.**  
CONSULTING ENGINEERS ... CITY, COUNTY, AND REGIONAL PLANNERS  
395 EDGEWOOD TERRACE  
JACKSON, MS 39206

This document, and the ideas and designs incorporated herein, as an instrument of professional services, is the property of DIVERSIFIED CONSULTANTS, INC. and is not to be used, in whole or part, for any other project without the written authority of DIVERSIFIED CONSULTANTS, INC.

# STREETS AND SITE UTILITIES

## PHASE 2 COMMERCIAL

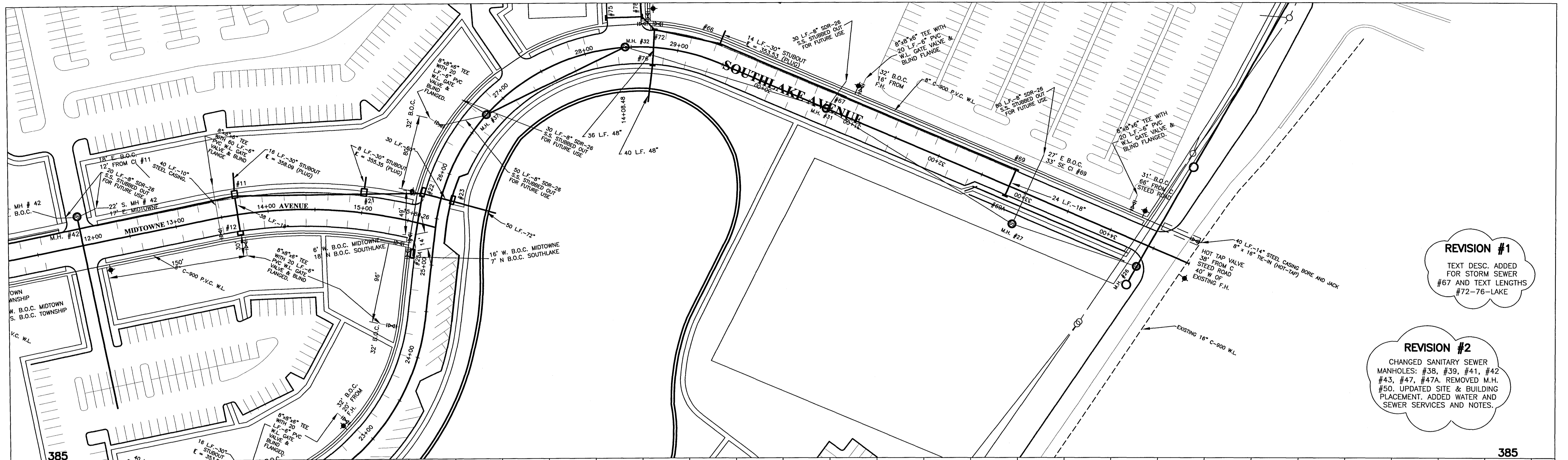
### KERIOTH CORPORATION

REVISIONS		
NO.	DATE	BY
1	10/7/2004	J.H.G.
2	1/06/2005	N.O.H.
3	4/05/05	J.H.G.
4	6/17/05	J.H.G.
5		
6		

SCALE  
HORIZ.: 1" = 50'  
VERT.: 1" = 5'  
DATE  
APPROVED BY: **DSB**  
DRAWN BY: **AUJ**  
CHECKED BY: **JHG**

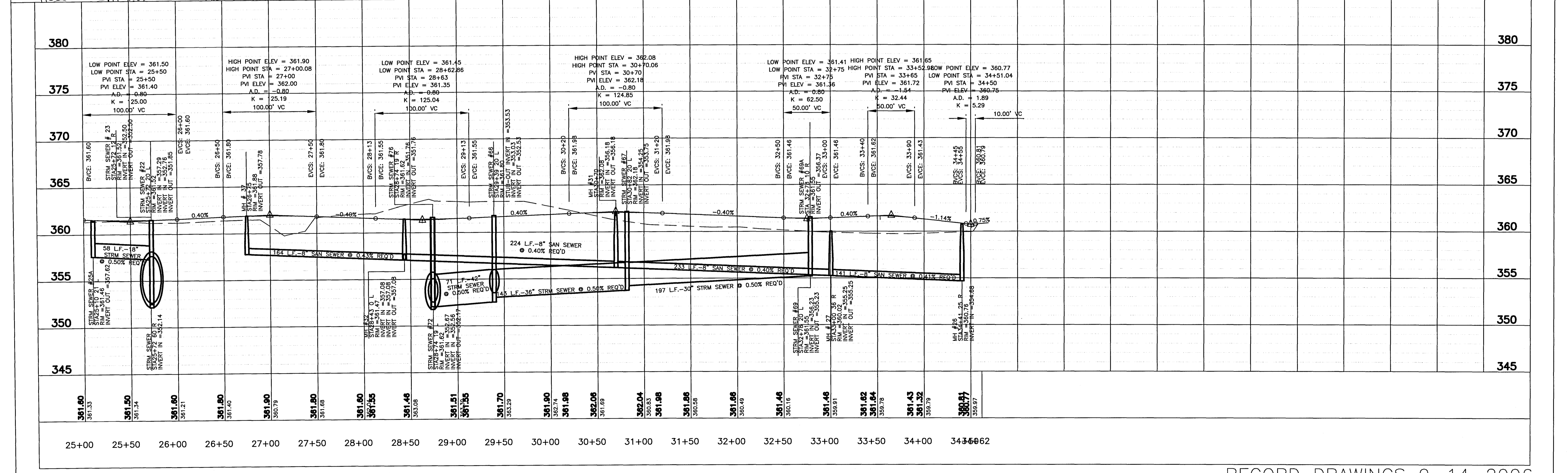
SHEET TITLE  
**SOUTHLAKE AVE PLANPROFILE**  
FILE NAME  
SHEET NO. **6**





**REVISION #1**  
 TEXT DESC. ADDED FOR STORM SEWER #67 AND TEXT LENGTHS #72-76-LAKE

**REVISION #2**  
 CHANGED SANITARY SEWER MANHOLES: #38, #39, #41, #42, #43, #47, #47A. REMOVED M.H. #50. UPDATED SITE & BUILDING PLACEMENT. ADDED WATER AND SEWER SERVICES AND NOTES.



RECORD DRAWINGS 9-14-2006

**DCI** **DIVERSIFIED CONSULTANTS, INC.**  
 CONSULTING ENGINEERS ... CITY, COUNTY, AND REGIONAL PLANNERS  
 395 EDGEWOOD TERRACE  
 JACKSON, MS 39206

This document, and the ideas and designs incorporated herein, as an instrument of professional services, is the property of DIVERSIFIED CONSULTANTS, INC. and is not to be used, in whole or part, for any other project without the written authority of DIVERSIFIED CONSULTANTS, INC.

**STREETS AND SITE UTILITIES**  
**PHASE 2 COMMERCIAL**  
**KERIOTH CORPORATION**

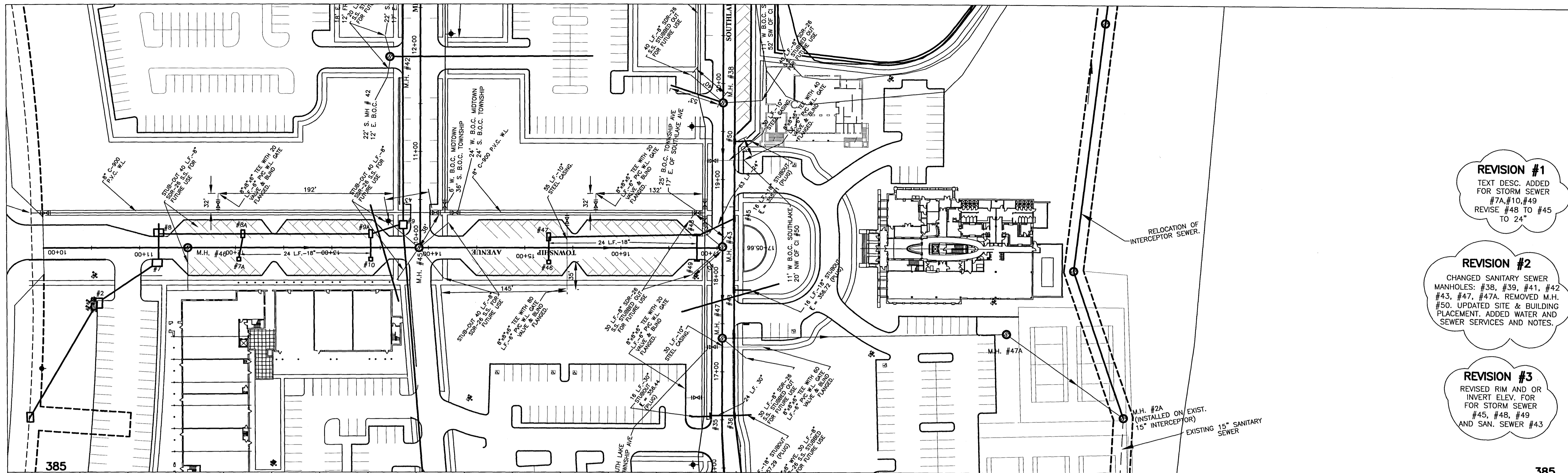
REVISIONS		
NO.	DATE	BY
1	10/7/2004	J.H.G.
2	1/06/2005	N.O.H.
3		
4		
5		
6		

SCALE HORZ: 1" = 50' VERT: 1" = 5'
DATE
APPROVED BY <b>DSB</b>
DRAWN BY <b>AUJ</b>
CHECKED BY <b>JHG</b>

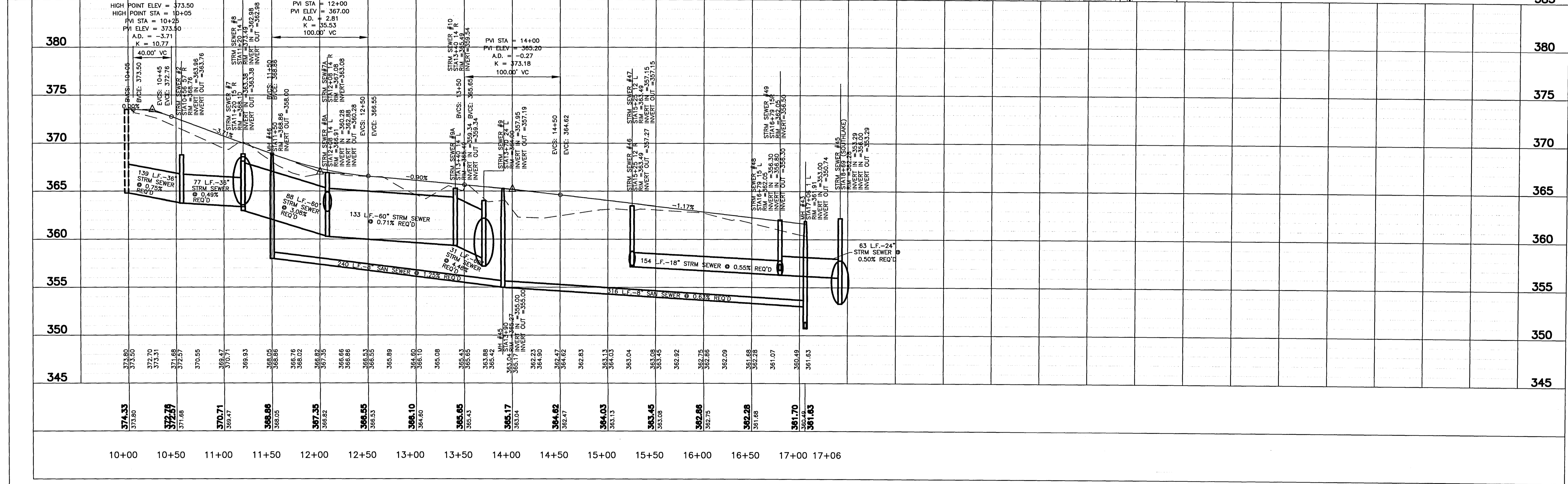
SHEET TITLE <b>SOUTHLAKE AVE CONT. PLAN/PROFILE</b>	
FILE NAME	SHEET NO. <b>7</b>

Kerioth Corp Verioth phase 2 Rec.dwg, southlake pp-s002, 1/22/2007, 9:20:48 AM, jhg





- REVISION #1**  
TEXT DESC. ADDED FOR STORM SEWER #7A, #10, #49  
REVISE #48 TO #45 TO 24"
- REVISION #2**  
CHANGED SANITARY SEWER MANHOLES: #38, #39, #41, #42, #43, #47, #47A. REMOVED M.H. #50. UPDATED SITE & BUILDING PLACEMENT. ADDED WATER AND SEWER SERVICES AND NOTES.
- REVISION #3**  
REVISED RIM AND OR INVERT ELEV. FOR STORM SEWER #45, #48, #49 AND SAN. SEWER #43



RECORD DRAWINGS 9-14-2006

**DCI** **DIVERSIFIED CONSULTANTS, INC.**  
CONSULTING ENGINEERS ... CITY, COUNTY, AND REGIONAL PLANNERS  
395 EDGEWOOD TERRACE  
JACKSON, MS 39206

This document, and the ideas and designs incorporated herein, as an instrument of professional services, is the property of DIVERSIFIED CONSULTANTS, INC. and is not to be used, in whole or part, for any other project without the written authority of DIVERSIFIED CONSULTANTS, INC.

# STREETS AND SITE UTILITIES

## PHASE 2 COMMERCIAL

### KERIOTH CORPORATION

REVISIONS		
NO.	DATE	BY
1	10/7/2004	J.H.G.
2	1/06/2005	N.O.H.
3	5/11/05	J.H.G.
4		
5		
6		

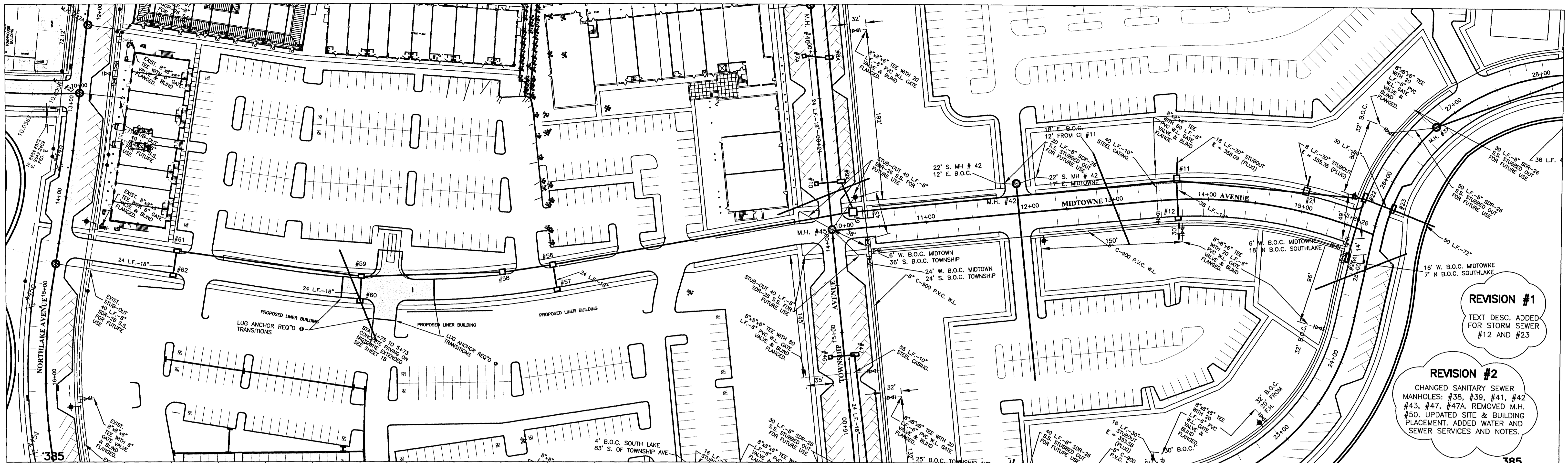
SCALE  
HORZ: 1" = 50'  
VERT: 1" = 5'  
DATE  
APPROVED BY **DSB**  
DRAWN BY **AUJ**  
CHECKED BY **JHG**

SHEET TITLE  
**TOWNSHIP AVE PLAN/PROFILE**  
FILE NAME  
SHEET NO. **8**

I:\kerioth Corp\kerioth - phase 2 - com\dwg\Commercial Phase 2 - Rec.dwg - township - pp+s001 - 1/22/2007 9:22:11 AM. origin

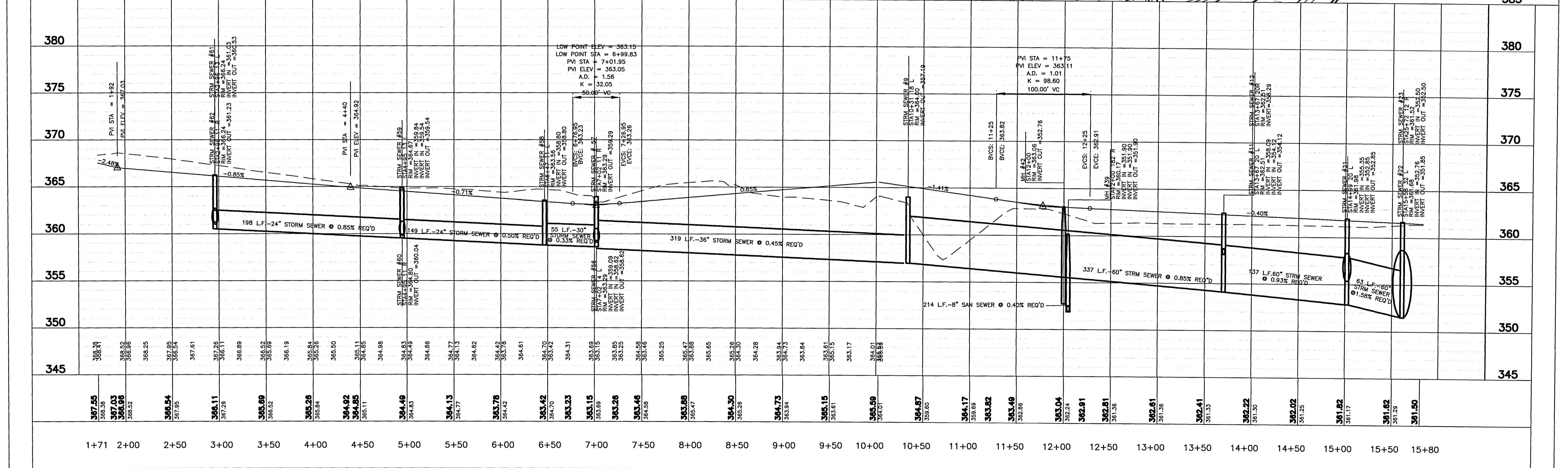


I:\erioth-Corp\Veridh - phase 2 - com\dwg\Commercial Phase 2 Rec.dwg - midtowne pp+601, 1/22/2007 9:24:07 AM



**REVISION #1**  
TEXT DESC. ADDED FOR STORM SEWER #12 AND #23

**REVISION #2**  
CHANGED SANITARY SEWER MANHOLES: #38, #39, #41, #42, #43, #47, #47A. REMOVED M.H. #50. UPDATED SITE & BUILDING PLACEMENT. ADDED WATER AND SEWER SERVICES AND NOTES.



RECORD DRAWINGS 9-14-2006

**DCI** **DIVERSIFIED CONSULTANTS, INC.**  
CONSULTING ENGINEERS ... CITY, COUNTY, AND REGIONAL PLANNERS  
395 EDGEWOOD TERRACE  
JACKSON, MS 39206

This document, and the ideas and designs incorporated herein, as an instrument of professional services, is the property of DIVERSIFIED CONSULTANTS, INC. and is not to be used, in whole or part, for any other project without the written authority of DIVERSIFIED CONSULTANTS, INC.

# STREETS AND SITE UTILITIES

## PHASE 2 COMMERCIAL

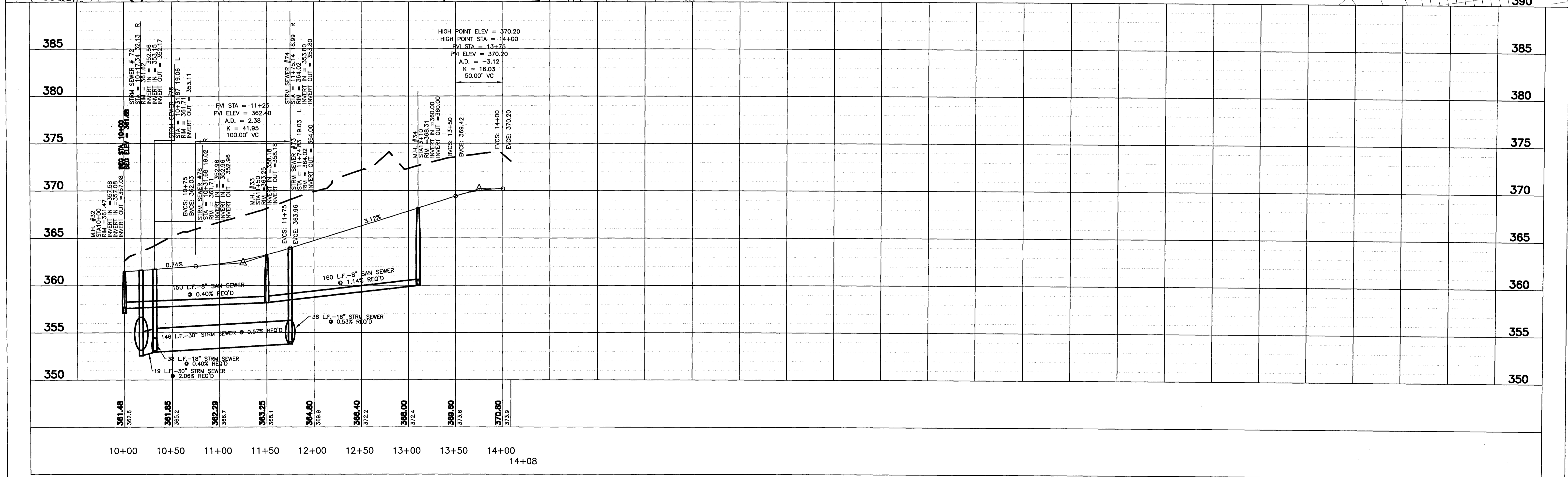
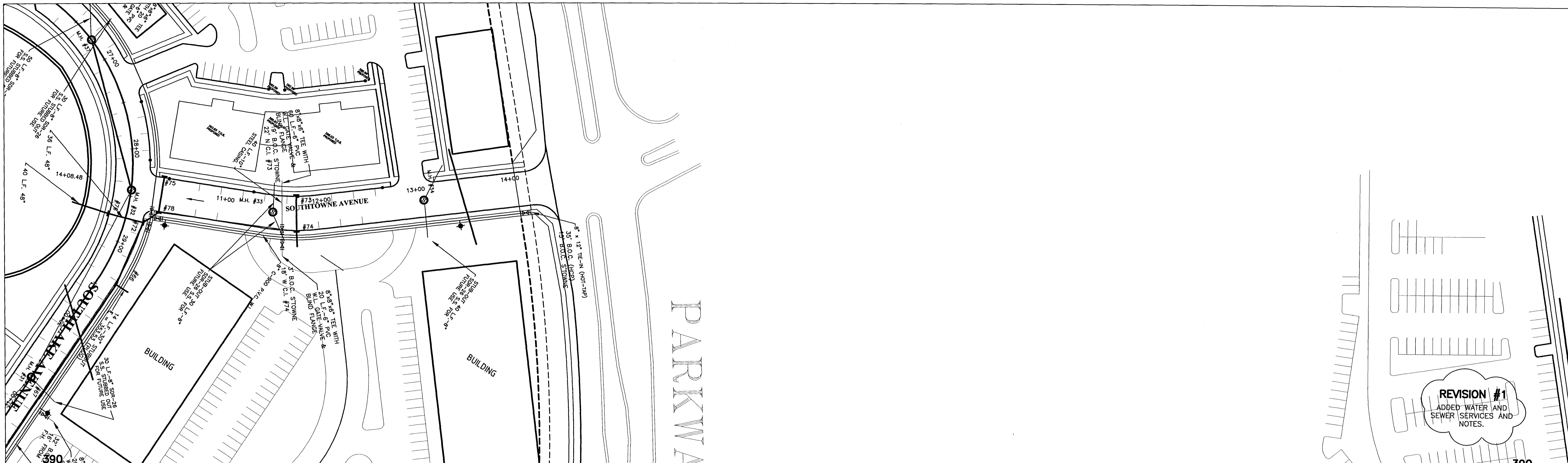
### KERIOTH CORPORATION

REVISIONS		
NO.	DATE	BY
1	10/7/2004	J.H.G.
2	1/06/2005	N.O.H.
3		
4		
5		
6		

SCALE  
HORIZ.: 1" = 50'  
VERT.: 1" = 5'  
DATE  
APPROVED BY **DSB**  
DRAWN BY **AUJ**  
CHECKED BY **JHG**

SHEET TITLE  
**MIDTOWNE EXTENDED-MIDTOWNE AVE PLAN/PROFILE**  
FILE NAME  
SHEET NO. **9**





RECORD DRAWINGS 9-14-2006

**DCI** **DIVERSIFIED CONSULTANTS, INC.**  
 CONSULTING ENGINEERS ... CITY, COUNTY, AND REGIONAL PLANNERS  
 395 EDGEWOOD TERRACE  
 JACKSON, MS 39206

This document, and the ideas and designs incorporated herein, as an instrument of professional services, is the property of DIVERSIFIED CONSULTANTS, INC. and is not to be used, in whole or part, for any other project without the written authority of  
**DIVERSIFIED CONSULTANTS, INC.**

**STREETS AND SITE UTILITIES**  
**PHASE 2 COMMERCIAL**  
**KERIOTH CORPORATION**

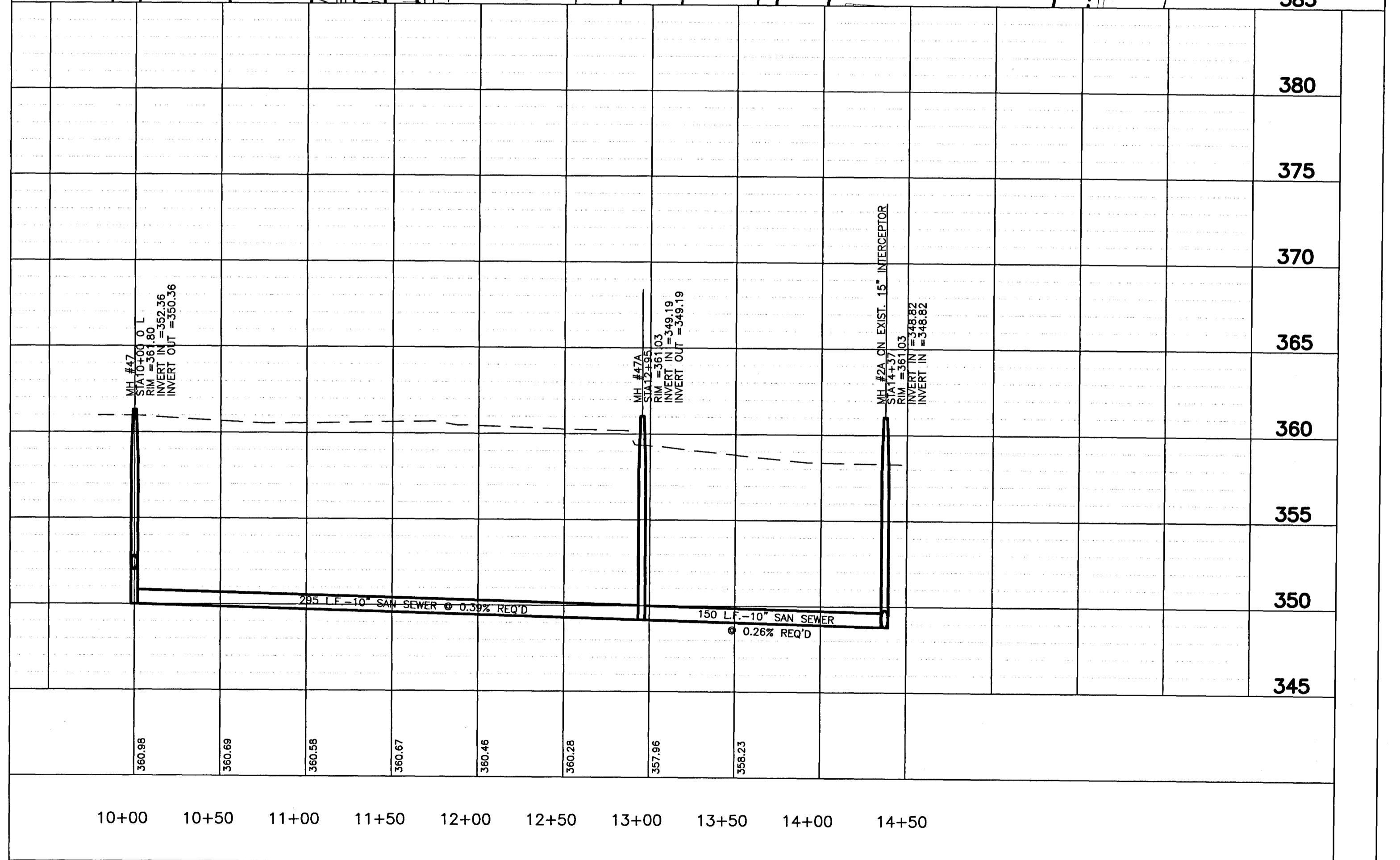
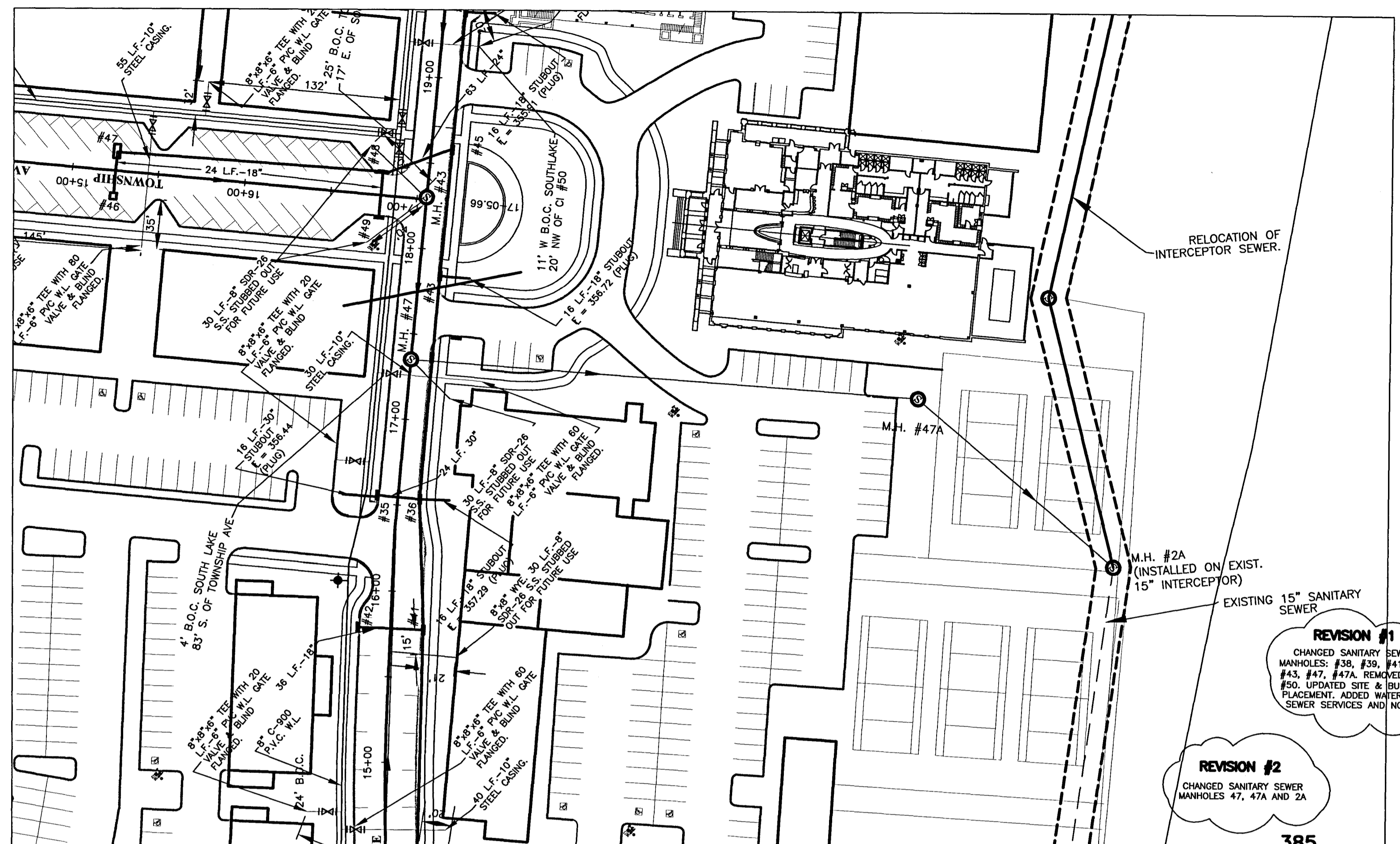
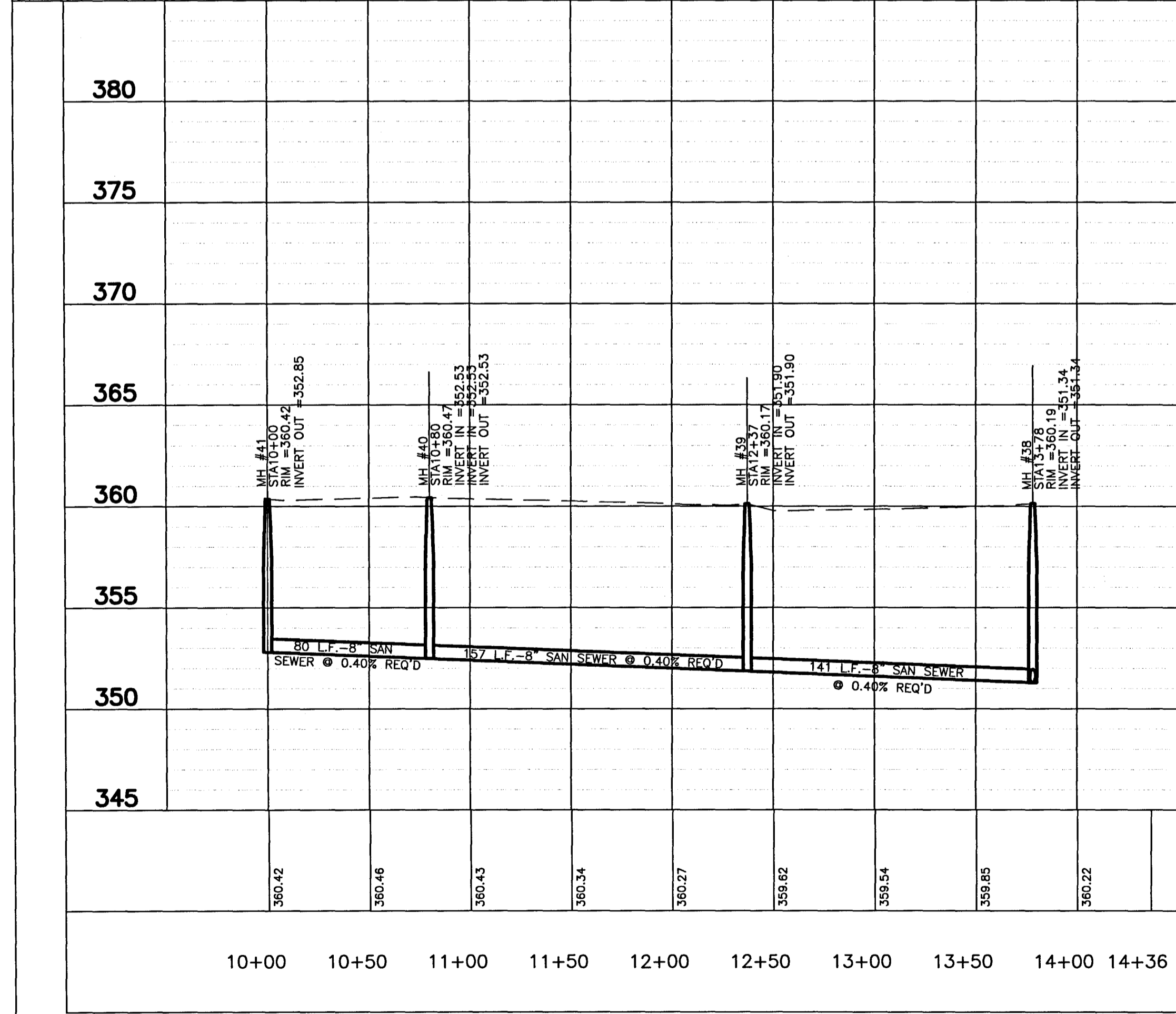
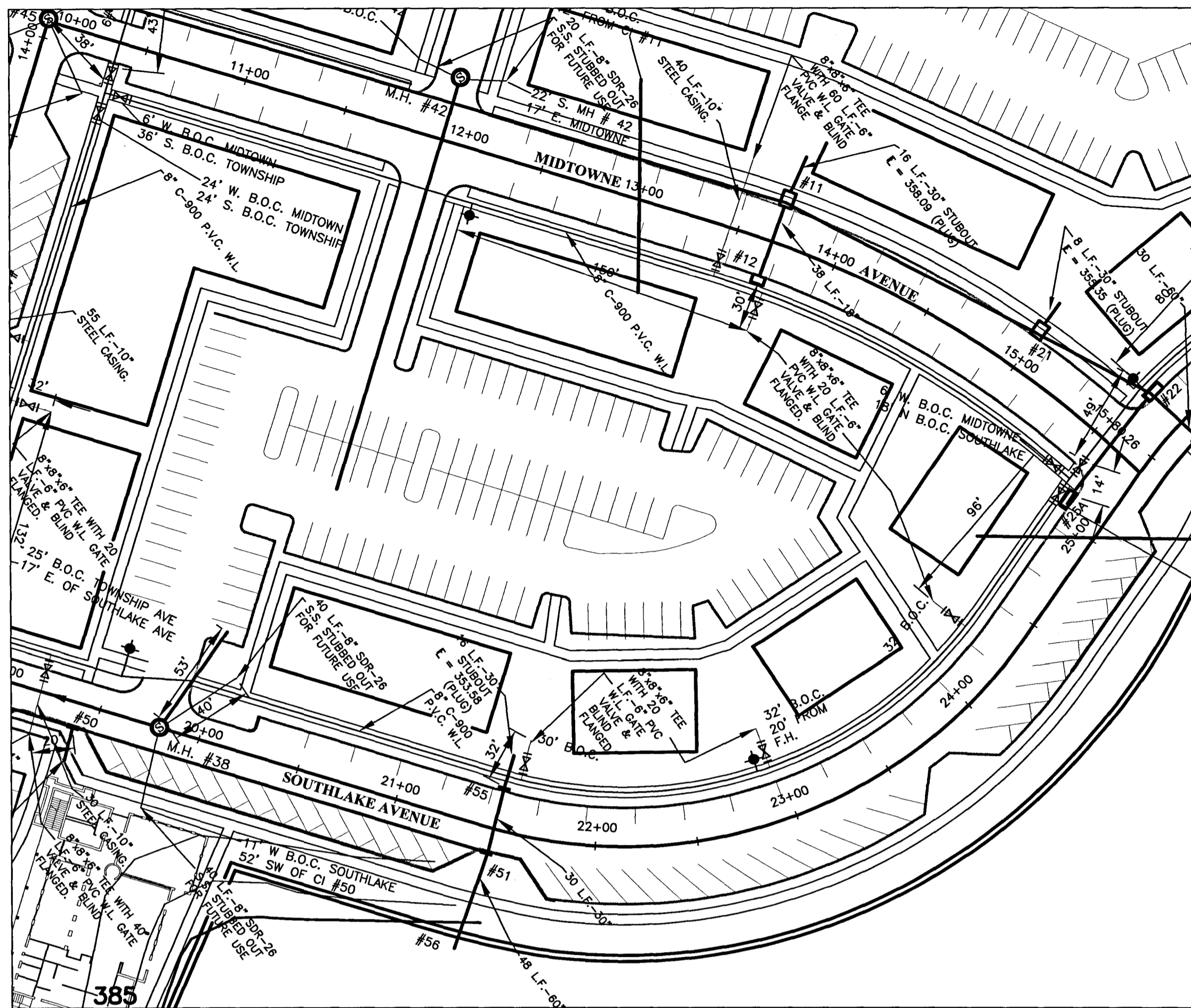
REVISIONS		
NO.	DATE	BY
1	1/06/2005	N.O.H.
2		
3		
4		
5		
6		

SCALE  
**HORIZ: 1" = 50'**  
**VERT: 1" = 5'**  
 DATE  
 APPROVED BY **DSB**  
 DRAWN BY **AUJ**  
 CHECKED BY **JHG**

SHEET TITLE  
**SOUTHTOWNE AVE**  
**PLAN/PROFILE**  
 FILE NAME  
 SHEET NO. **10**

M:\kerioth Corp\Verioth phase 2.com\dwg\Commercial Phase 2 Rec.dwg, southtowne pps001, 1/22/2007 9:28:54 AM, Jomigant





**REVISION #1**  
CHANGED SANITARY SEWER MANHOLES: #38, #39, #41, #42, #43, #47, #47A. REMOVED M.H. #50. UPDATED SITE & BUILDING PLACEMENT. ADDED WATER AND SEWER SERVICES AND NOTES.

**REVISION #2**  
CHANGED SANITARY SEWER MANHOLES 47, 47A AND 2A.

RECORD DRAWINGS 9-14-2006

**DCI** **DIVERSIFIED CONSULTANTS, INC.**  
CONSULTING ENGINEERS ... CITY, COUNTY, AND REGIONAL PLANNERS  
395 EDGEWOOD TERRACE  
JACKSON, MS 39206

This document, and the ideas and designs incorporated herein, as an instrument of professional services, is the property of DIVERSIFIED CONSULTANTS, INC. and is not to be used, in whole or part, for any other project without the written authority of DIVERSIFIED CONSULTANTS, INC.

**STREETS AND SITE UTILITIES**  
**PHASE 2 COMMERCIAL**  
**KERIOOTH CORPORATION**

REVISIONS		
NO.	DATE	BY
1	1/06/05	N.O.H.
2	6/17/05	J.H.G.
3		
4		
5		
6		

SCALE  
HORIZ: 1" = 50'  
VERT: 1" = 5'  
DATE  
APPROVED BY **DSB**  
DRAWN BY **AUJ**  
CHECKED BY **JHG**

SHEET TITLE  
**MIDTOWNE TO SOUTHLAKE, SOUTHLAKE TO EXIST. SAN SEWER-PLAN/PROFILE**

FILE NAME SHEET NO. **11**

K:\eriooth\phase 2.com\dwg\Commercial Phase 2 Rec.dwg, si pfl north pp=s001, 1/22/2007 9:32:28 AM, Jomgunt