

THE TOWNSHIP AT COLONY PARK

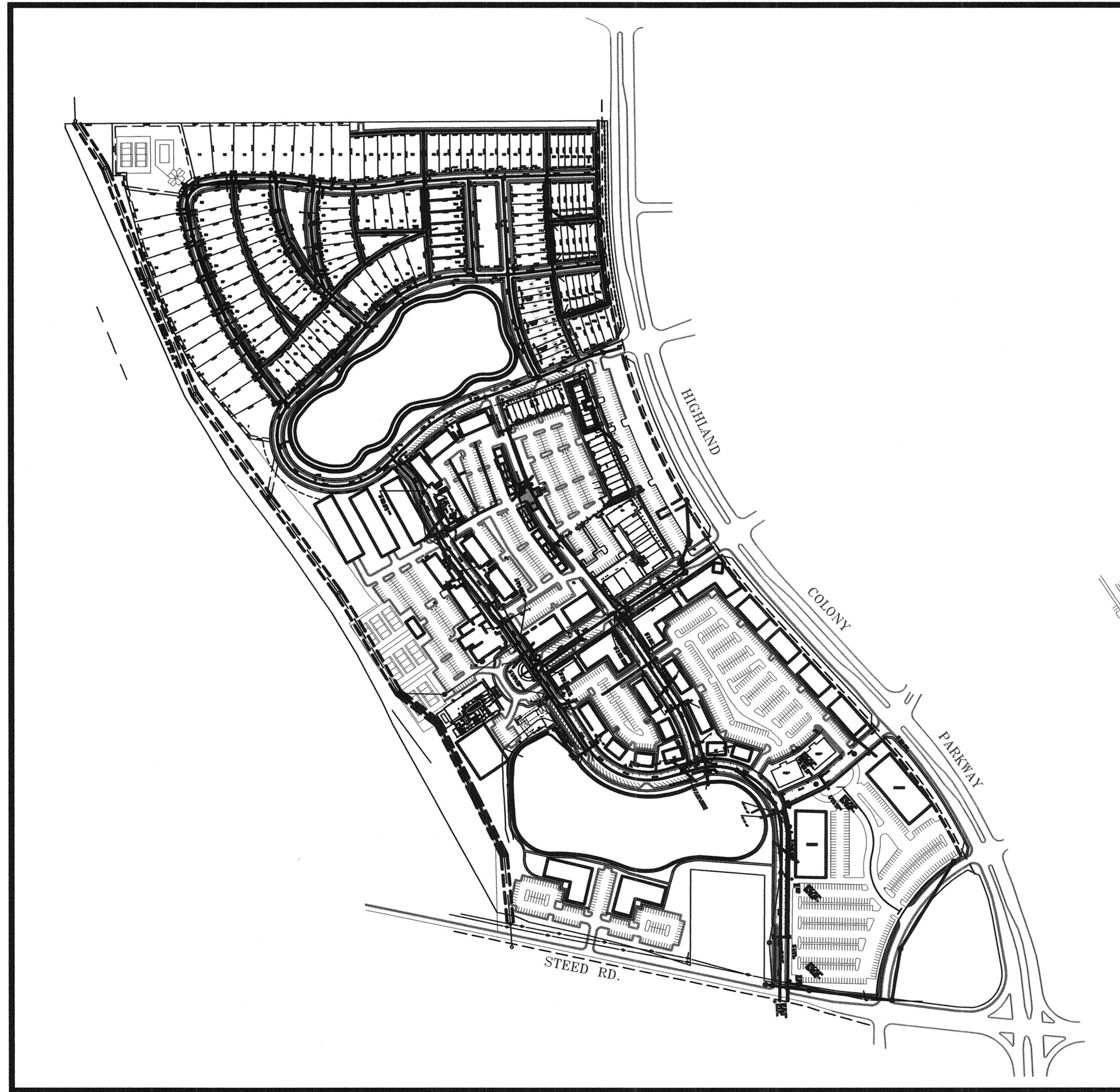
STREET AND SITE UTILITIES PHASE II COMMERCIAL

CITY OF RIDGELAND, MS

OWNER:
THE TOWNSHIP LAND CO., LLC

BY:
KERIOTH CORPORATION

PREPARED BY:
DIVERSIFIED CONSULTANTS



SHEET INDEX	
TITLE	SHEET NO.
COVER SHEET	1
STREET LAYOUT	4
WATER AND SANITARY SEWER LAYOUT	5
SOUTHLAKE AVE - P/P	6
SOUTHLAKE AVE - P/P	7
TOWNSHIP AVE - P/P	8
MIDTOWNE EXTENDED - MIDTOWNE AVE - P/P	9
SOUTHTOWNE AVE - P/P	10
MIDTOWNE TO SOUTHLAKE - P/P	11

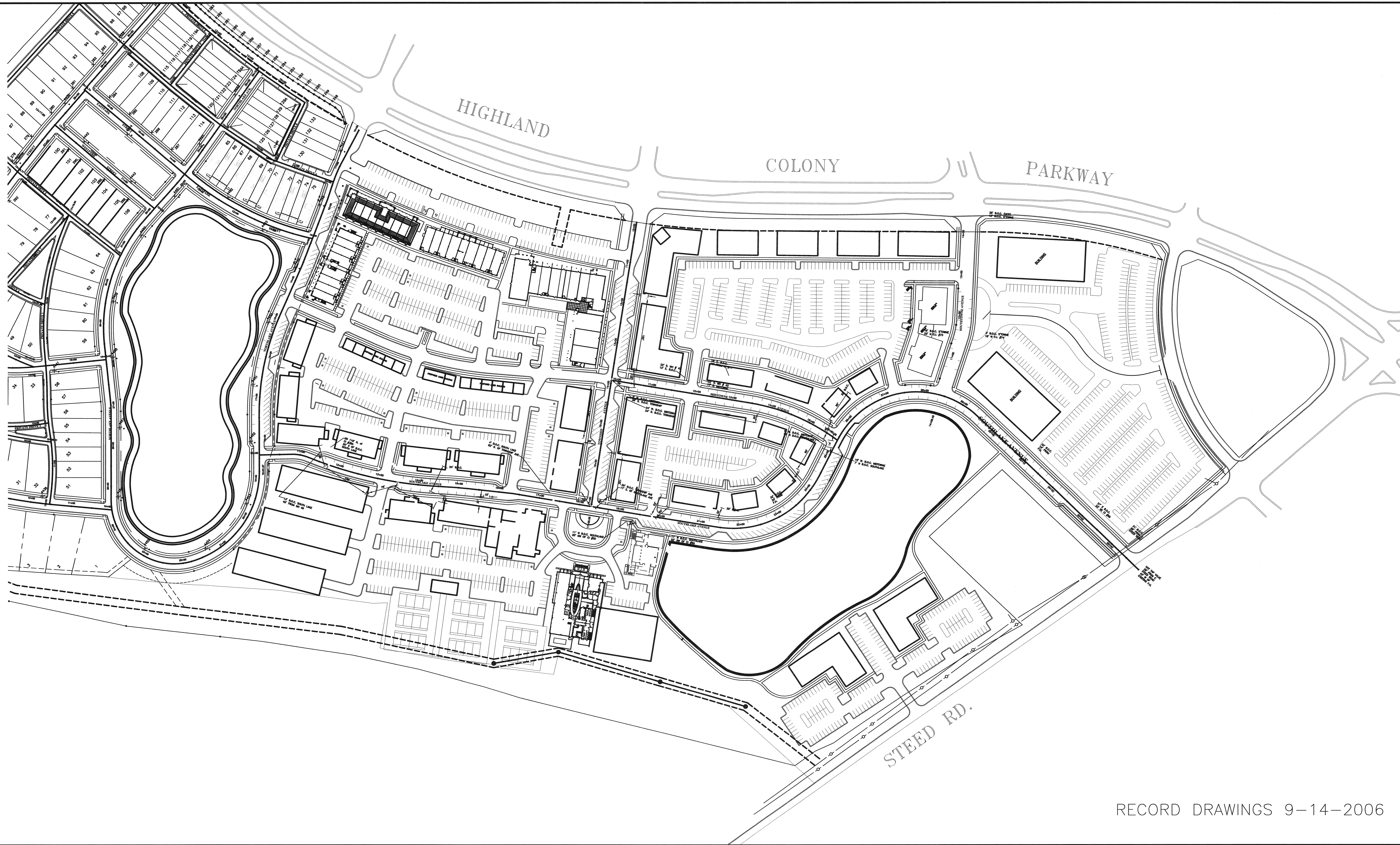
SEPTEMBER 2006

DCI **DIVERSIFIED CONSULTANTS, INC.**
CONSULTING ENGINEERS ... CITY, COUNTY, AND REGIONAL PLANNERS

395 EDGEWOOD TERRACE
JACKSON, MS 39206

D. SCOTT BONNER – ENGINEER

RECORD DRAWINGS 9-14-2006



RECORD DRAWINGS 9-14-2006

DCI **DIVERSIFIED CONSULTANTS, INC.**
 CONSULTING ENGINEERS ... CITY, COUNTY, AND REGIONAL PLANNERS
 395 EDGEWOOD TERRACE
 JACKSON, MS 39206

This document, and the ideas and designs incorporated herein, as an instrument of professional services, is the property of DIVERSIFIED CONSULTANTS, INC. and is not to be used, in whole or part, for any other project without the written authority of DIVERSIFIED CONSULTANTS, INC.

STREETS AND SITE UTILITIES

PHASE 2 COMMERCIAL

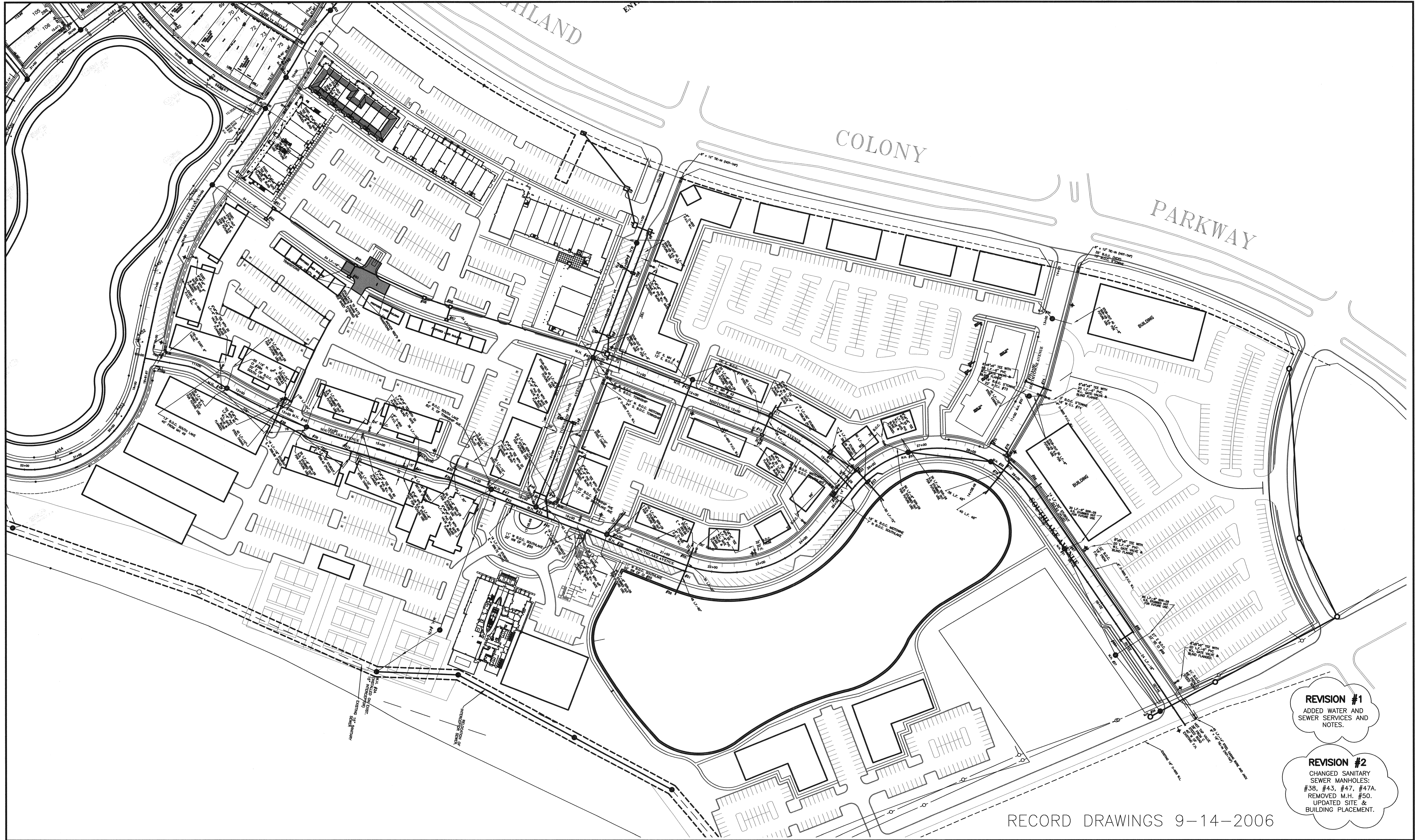
KERIOTH CORPORATION

REVISIONS		
NO.	DATE	BY
1		
2		
3		
4		
5		
6		

SCALE
1" = 100'
 DATE
 APPROVED BY **DSB**
 DRAWN BY **AUJ**
 CHECKED BY **JHG**

SHEET TITLE
STREET LAYOUT
 FILE NAME
 SHEET NO. **4**

M:\kerioth Corp\kerioth phase 2.com\dwg\Commercial Phase 2 Rec.dwg, OVERALL STREET LAYOUT, 1/24/2007 10:06:05 AM, Johnson



REVISION #1
 ADDED WATER AND SEWER SERVICES AND NOTES.

REVISION #2
 CHANGED SANITARY SEWER MANHOLES: #38, #43, #47, #47A. REMOVED M.H. #50. UPDATED SITE & BUILDING PLACEMENT.

RECORD DRAWINGS 9-14-2006

DCI **DIVERSIFIED CONSULTANTS, INC.**
 CONSULTING ENGINEERS ... CITY, COUNTY, AND REGIONAL PLANNERS
 395 EDGEWOOD TERRACE
 JACKSON, MS 39206

This document, and the ideas and designs incorporated herein, as an instrument of professional services, is the property of DIVERSIFIED CONSULTANTS, INC. and is not to be used, in whole or part, for any other project without the written authority of DIVERSIFIED CONSULTANTS, INC.

STREETS AND SITE UTILITIES
PHASE 2 COMMERCIAL
KERIOTH CORPORATION

REVISIONS		
NO.	DATE	BY
1	12/28/2004	JHG
2	1/06/2005	N.O.H.
3		
4		
5		
6		

SCALE
 SCALE: 1" = 80'
 DATE
 APPROVED BY **DSB**
 DRAWN BY **AUJ**
 CHECKED BY **JHG**

SHEET TITLE
WATER AND, SANITARY SEWER LAYOUT
 FILE NAME
 SHEET NO. **5**

M:\Kerioth Corp\Veritech phase 2.com\dwg\Commercial Phase 2 Rec.dwg WATER AND SEWER LAYOUT, 1/24/2007 10:06:25 AM, Jobprint



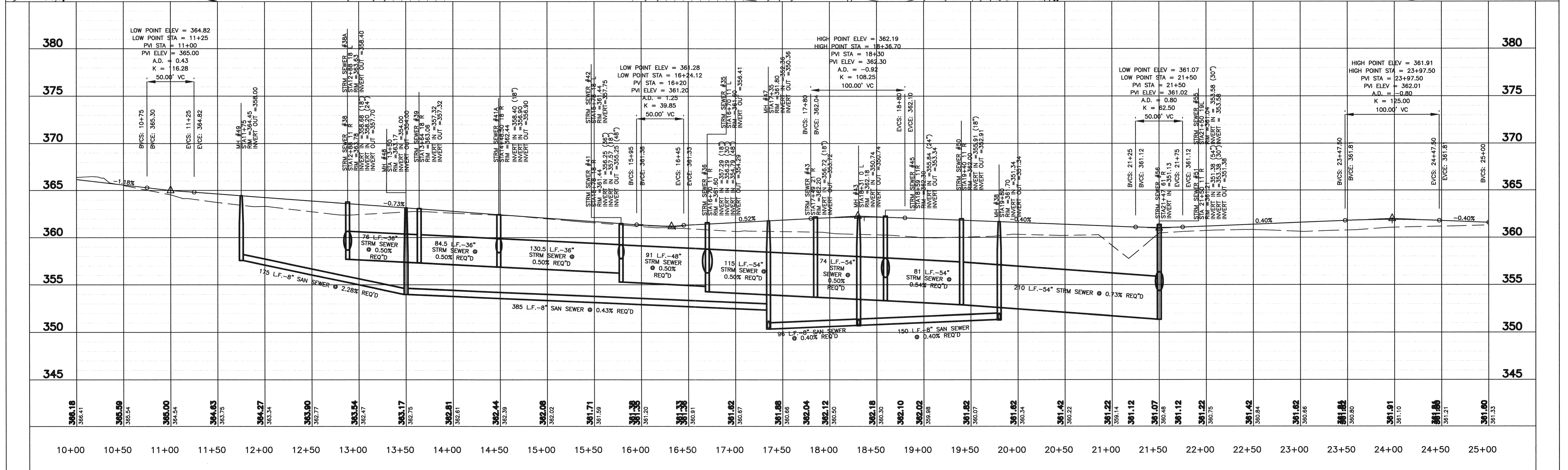
REVISION #1
TEXT DESCR. ADDED FOR STORM SEWER #42 AND 55

REVISION #2
CHANGED SANITARY SEWER MANHOLES: #38, #39, #41, #42, #43, #47, #47A, #47B, #47C, #47D, #47E, #47F, #47G, #47H, #47I, #47J, #47K, #47L, #47M, #47N, #47O, #47P, #47Q, #47R, #47S, #47T, #47U, #47V, #47W, #47X, #47Y, #47Z, #48, #49, #50, #51, #52, #53, #54, #55, #56, #57, #58, #59, #60, #61, #62, #63, #64, #65, #66, #67, #68, #69, #70, #71, #72, #73, #74, #75, #76, #77, #78, #79, #80, #81, #82, #83, #84, #85, #86, #87, #88, #89, #90, #91, #92, #93, #94, #95, #96, #97, #98, #99, #100. ADDED WATER AND SEWER SERVICES AND NOTES.

REVISION #3
REVISED RM AND OR INVERT ELEV. FOR STORM SEWERS #35, #36, #38, #41, #42, #43, #45, #50, #55

REVISION #4
CHANGED SANITARY SEWER MANHOLES 49, 48, 47, 47A AND 2A AND STORM SEWER INLETS 38A, 38, 39, 41A, 42, 41, 35, 36, 43, 50 AND 55 ON SOUTHLAKE FROM STA 11+00 TO STA 21+50

NOTE: INLETS MARKED TO BE PLUGGED SHALL HAVE INFLATABLE PLUGS INSTALLED AND LEFT IN THE NOTED INLET PIPE AT THE INLET WALL.



RECORD DRAWINGS 9-14-2006

DCI **DIVERSIFIED CONSULTANTS, INC.**
CONSULTING ENGINEERS ... CITY, COUNTY, AND REGIONAL PLANNERS
395 EDGEWOOD TERRACE
JACKSON, MS 39206

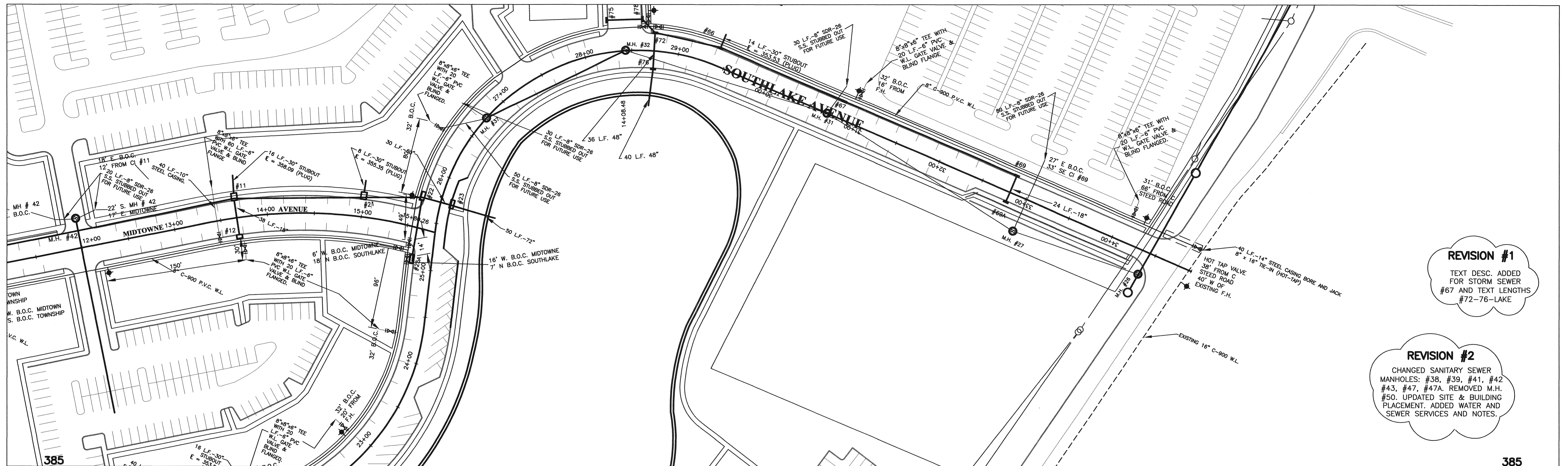
This document, and the ideas and designs incorporated herein, as an instrument of professional services, is the property of DIVERSIFIED CONSULTANTS, INC. and is not to be used, in whole or part, for any other project without the written authority of DIVERSIFIED CONSULTANTS, INC.

STREETS AND SITE UTILITIES
PHASE 2 COMMERCIAL
KERIOTH CORPORATION

REVISIONS			
NO.	DATE	BY	
1	10/7/2004	J.H.G.	
2	1/06/2005	N.O.H.	
3	4/05/05	J.H.G.	
4	6/17/05	J.H.G.	
5			
6			

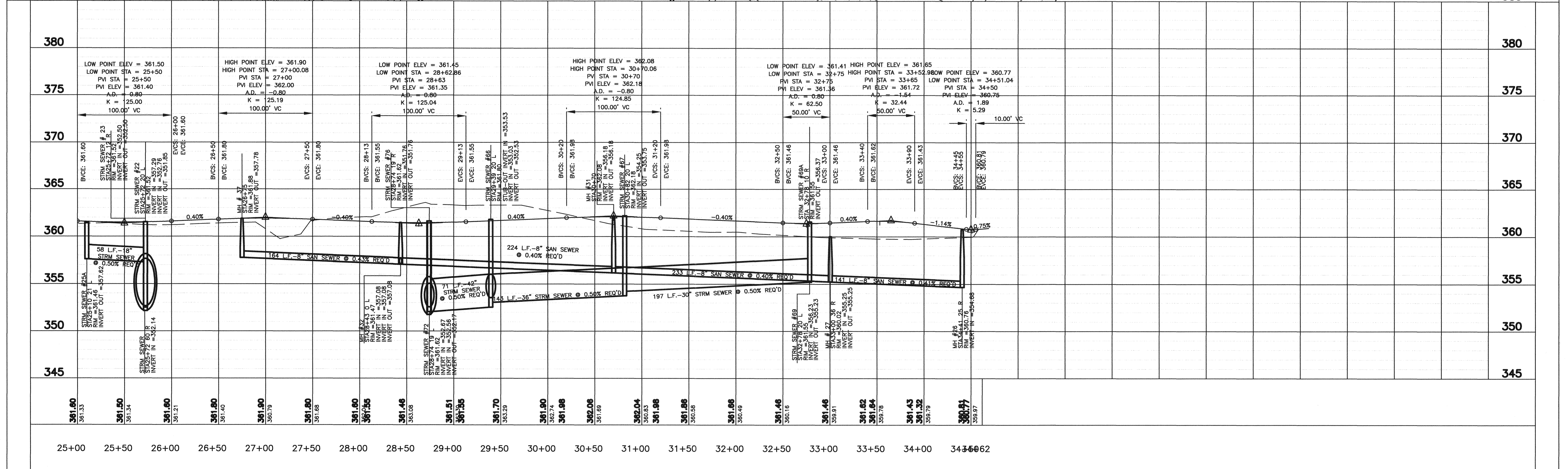
SCALE
HORZ.: 1" = 50'
VERT.: 1" = 5'
DATE
APPROVED BY **DSB**
DRAWN BY **AUJ**
CHECKED BY **JHG**

SHEET TITLE
SOUTHLAKE AVE PLANPROFILE
FILE NAME
SHEET NO. **6**



REVISION #1
 TEXT DESC. ADDED FOR STORM SEWER #67 AND TEXT LENGTHS #72-76-LAKE

REVISION #2
 CHANGED SANITARY SEWER MANHOLES: #38, #39, #41, #42, #43, #47, #47A. REMOVED M.H. #50. UPDATED SITE & BUILDING PLACEMENT. ADDED WATER AND SEWER SERVICES AND NOTES.



RECORD DRAWINGS 9-14-2006

DCI **DIVERSIFIED CONSULTANTS, INC.**
 CONSULTING ENGINEERS ... CITY, COUNTY, AND REGIONAL PLANNERS
 395 EDGEWOOD TERRACE
 JACKSON, MS 39206

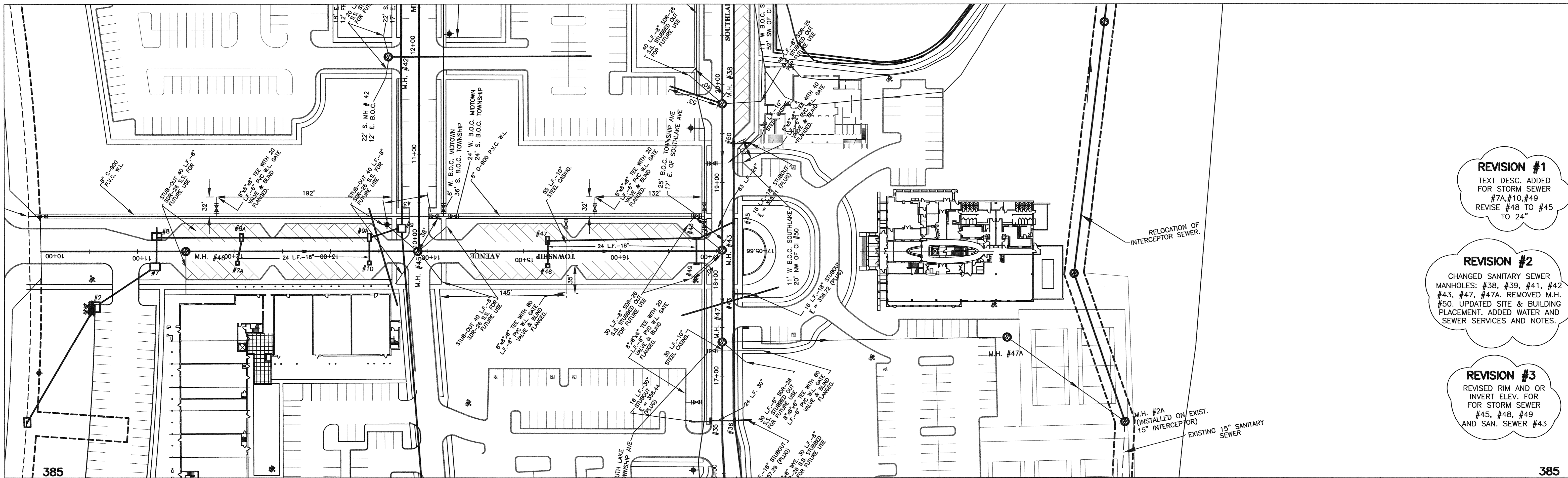
This document, and the ideas and designs incorporated herein, as an instrument of professional services, is the property of DIVERSIFIED CONSULTANTS, INC. and is not to be used, in whole or part, for any other project without the written authority of DIVERSIFIED CONSULTANTS, INC.

STREETS AND SITE UTILITIES
PHASE 2 COMMERCIAL
KERIOTH CORPORATION

REVISIONS		
NO.	DATE	BY
1	10/7/2004	J.H.G.
2	1/06/2005	N.O.H.
3		
4		
5		
6		

SCALE
HORZ.: 1" = 50'
VERT.: 1" = 5'
 DATE
 APPROVED BY **DSB**
 DRAWN BY **AUJ**
 CHECKED BY **JHG**

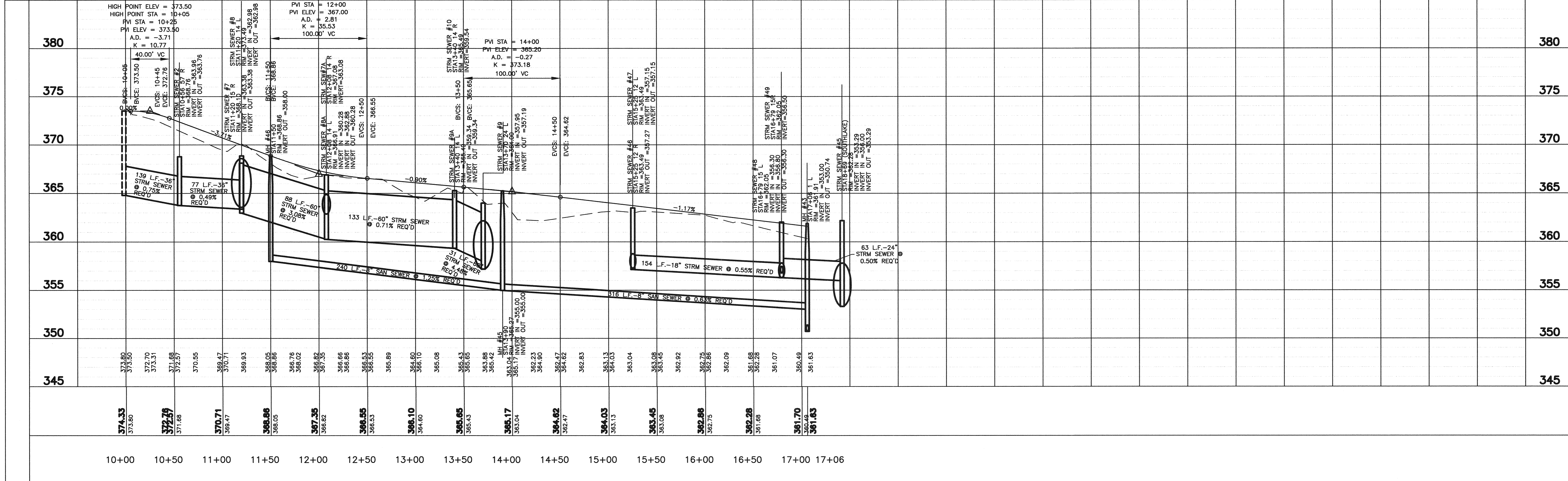
SHEET TITLE
SOUTHLAKE AVE CONT. PLANPROFILE
 FILE NAME
 SHEET NO. **7**



REVISION #1
 TEXT DESC. ADDED FOR STORM SEWER #7A, #10, #49
 REVISE #48 TO #45 TO 24"

REVISION #2
 CHANGED SANITARY SEWER MANHOLES: #38, #39, #41, #42, #43, #47, #47A. REMOVED M.H. #50. UPDATED SITE & BUILDING PLACEMENT. ADDED WATER AND SEWER SERVICES AND NOTES.

REVISION #3
 REVISED RIM AND OR INVERT ELEV. FOR STORM SEWER #45, #48, #49 AND SAN. SEWER #43



RECORD DRAWINGS 9-14-2006

DCI **DIVERSIFIED CONSULTANTS, INC.**
 CONSULTING ENGINEERS ... CITY, COUNTY, AND REGIONAL PLANNERS
 395 EDGEWOOD TERRACE
 JACKSON, MS 39206

This document, and the ideas and designs incorporated herein, as an instrument of professional services, is the property of DIVERSIFIED CONSULTANTS, INC. and is not to be used, in whole or part, for any other project without the written authority of
DIVERSIFIED CONSULTANTS, INC.

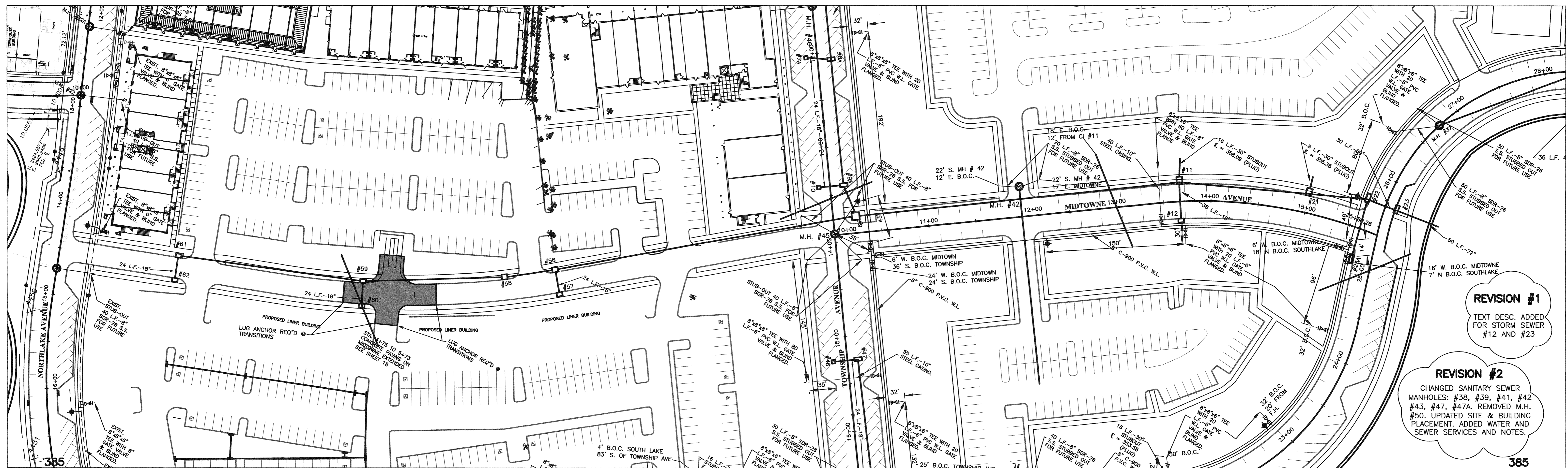
STREETS AND SITE UTILITIES
PHASE 2 COMMERCIAL
KERIOTH CORPORATION

REVISIONS		
NO.	DATE	BY
1	10/7/2004	J.H.G.
2	1/06/2005	N.O.H.
3	5/11/05	J.H.G.
4		
5		
6		

SCALE
HORZ.: 1" = 50'
VERT.: 1" = 5'
 DATE
 APPROVED BY **DSB**
 DRAWN BY **AUJ**
 CHECKED BY **JHG**

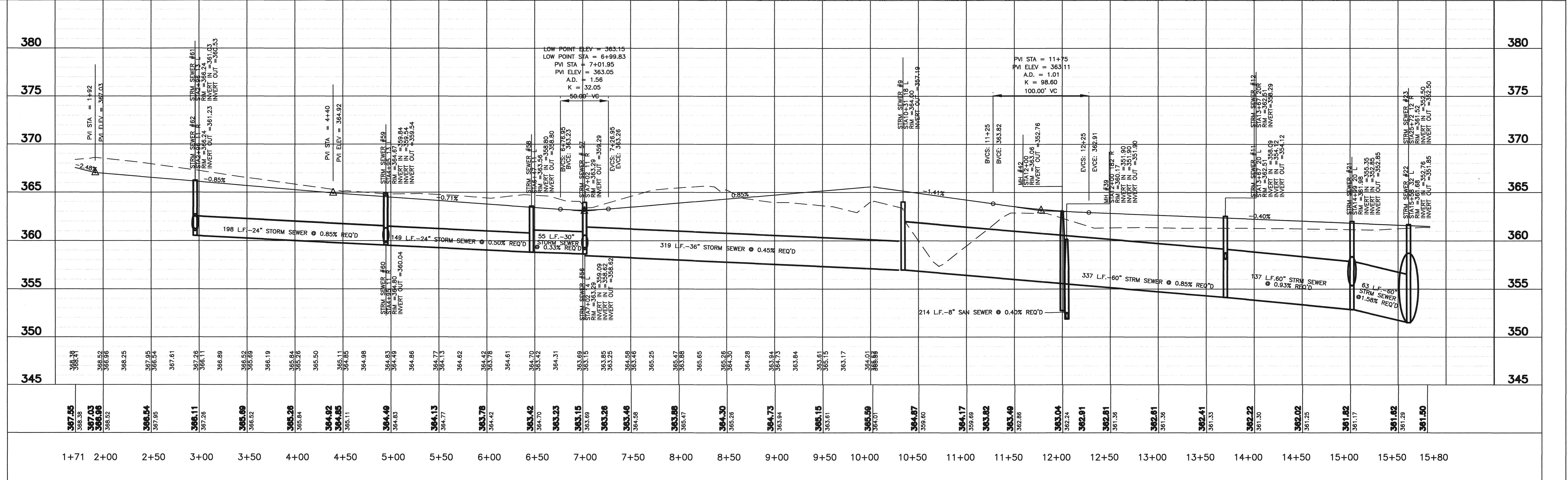
SHEET TITLE
TOWNSHIP AVE PLANPROFILE
 FILE NAME
 SHEET NO. **8**

M:\Kerioth Corp\Verioth phase 2 - Rec.dwg Commercial Phase 2 - Rec.dwg township pp+001, 1/24/2007 10:07:36 AM, Jomjant



REVISION #1
TEXT DESC. ADDED FOR STORM SEWER #12 AND #23

REVISION #2
CHANGED SANITARY SEWER MANHOLES: #38, #39, #41, #42, #43, #47, #47A. REMOVED M.H. #50. UPDATED SITE & BUILDING PLACEMENT. ADDED WATER AND SEWER SERVICES AND NOTES.



RECORD DRAWINGS 9-14-2006

DCI **DIVERSIFIED CONSULTANTS, INC.**
CONSULTING ENGINEERS ... CITY, COUNTY, AND REGIONAL PLANNERS
395 EDGEWOOD TERRACE
JACKSON, MS 39206

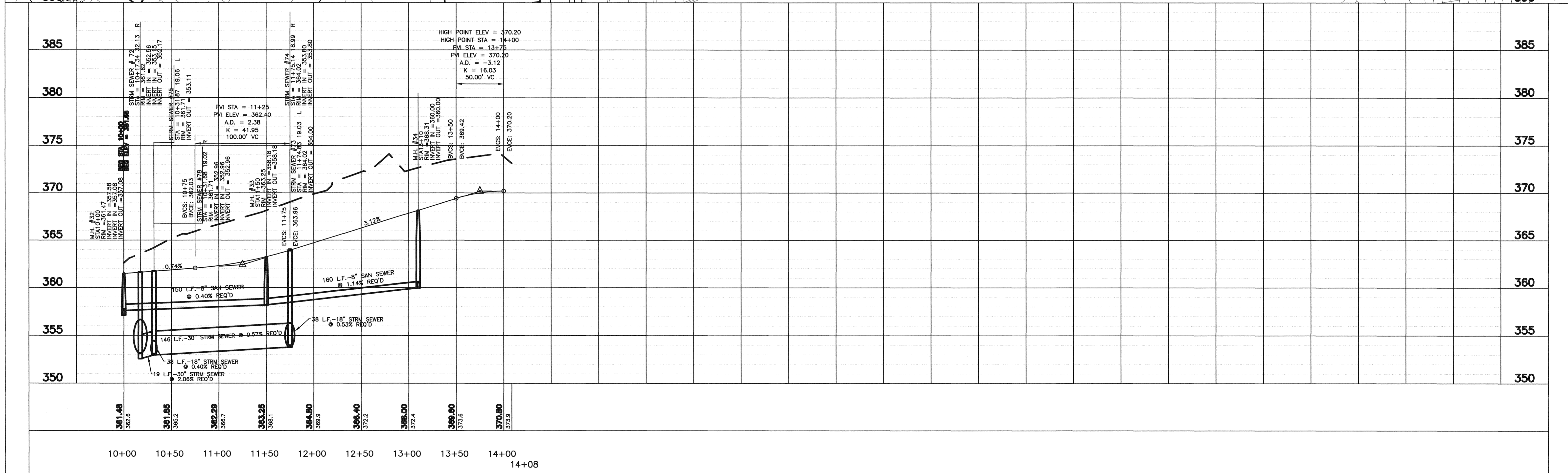
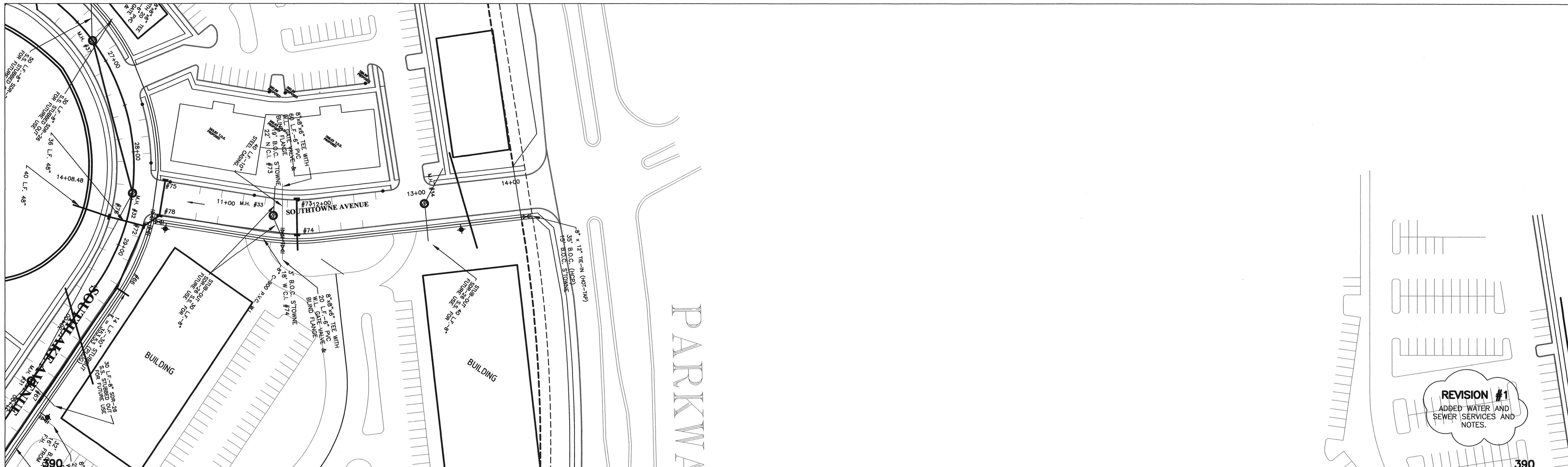
This document, and the ideas and designs incorporated herein, as an instrument of professional services, is the property of DIVERSIFIED CONSULTANTS, INC. and is not to be used, in whole or part, for any other project without the written authority of DIVERSIFIED CONSULTANTS, INC.

STREETS AND SITE UTILITIES
PHASE 2 COMMERCIAL
KERIOOTH CORPORATION

REVISIONS		
NO.	DATE	BY
1	10/7/2004	J.H.G.
2	1/06/2005	N.O.H.
3		
4		
5		
6		

SCALE HORZ.: 1" = 50' VERT.: 1" = 5'	
APPROVED BY DSB	
DRAWN BY AUJ	
CHECKED BY JHG	
SHEET TITLE MIDTOWNE EXTENDED-MIDTOWNE AVE PLAN/PROFILE	SHEET NO. 9

M:\Keriooth Corp\Veriooth phase 2 Rec.dwg, midtowne pps001, 1/24/2007 10:30:40 AM, Jomprant



RECORD DRAWINGS 9-14-2006

DCI **DIVERSIFIED CONSULTANTS, INC.**
 CONSULTING ENGINEERS ... CITY, COUNTY, AND REGIONAL PLANNERS
 395 EDGEWOOD TERRACE
 JACKSON, MS 39206

This document, and the ideas and designs incorporated herein, as an instrument of professional services, is the property of DIVERSIFIED CONSULTANTS, INC. and is not to be used, in whole or part, for any other project without the written authority of
DIVERSIFIED CONSULTANTS, INC.

STREETS AND SITE UTILITIES

PHASE 2 COMMERCIAL

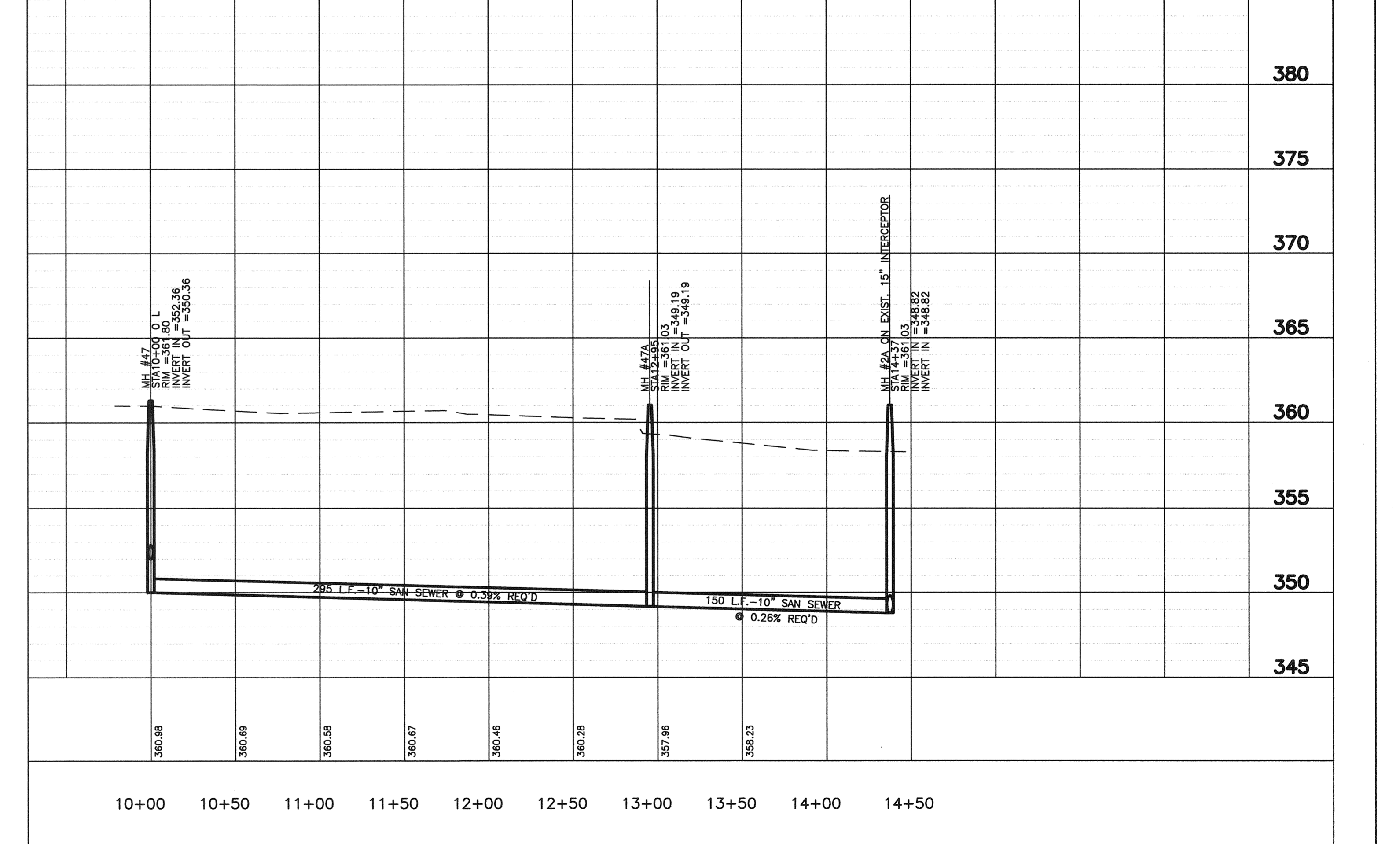
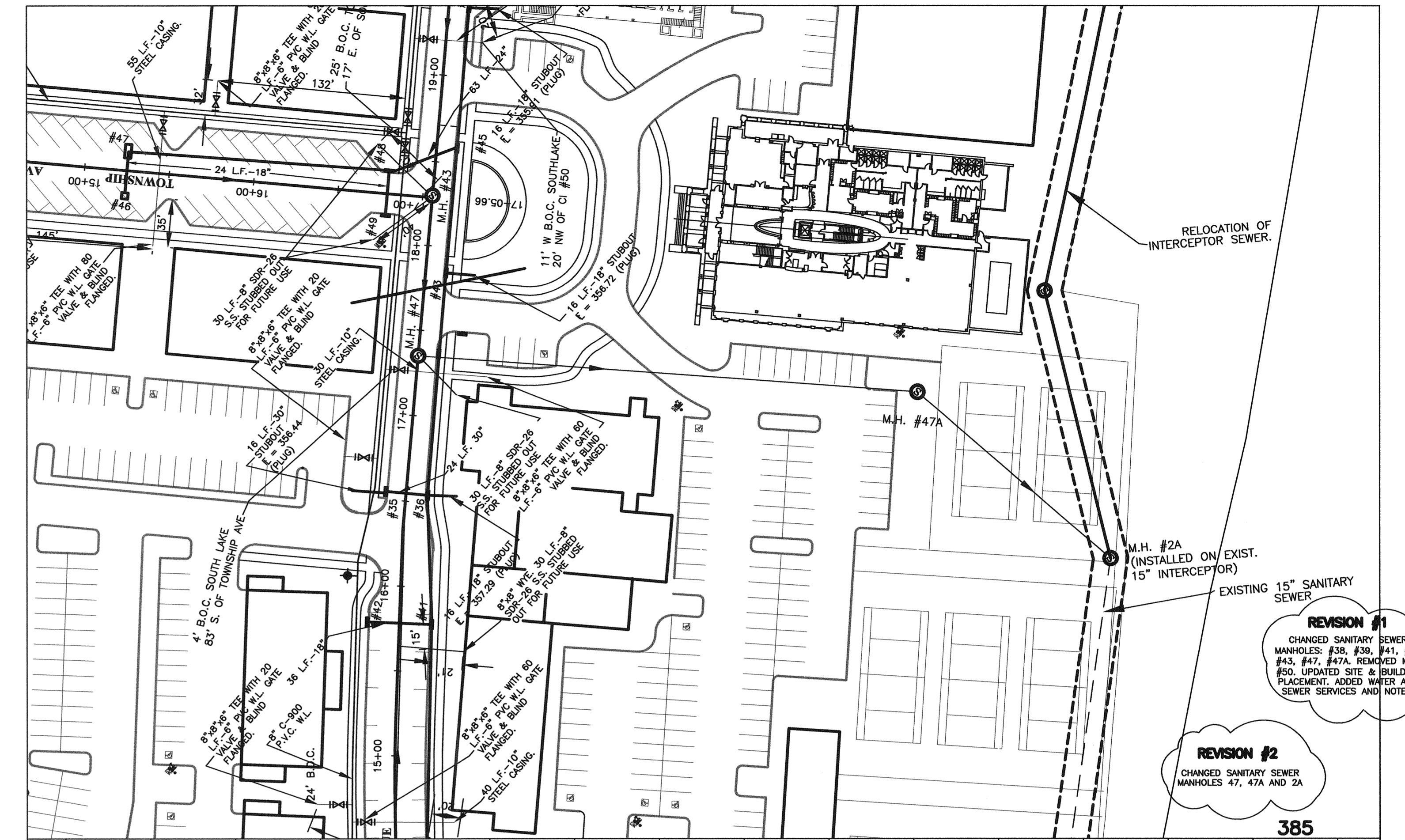
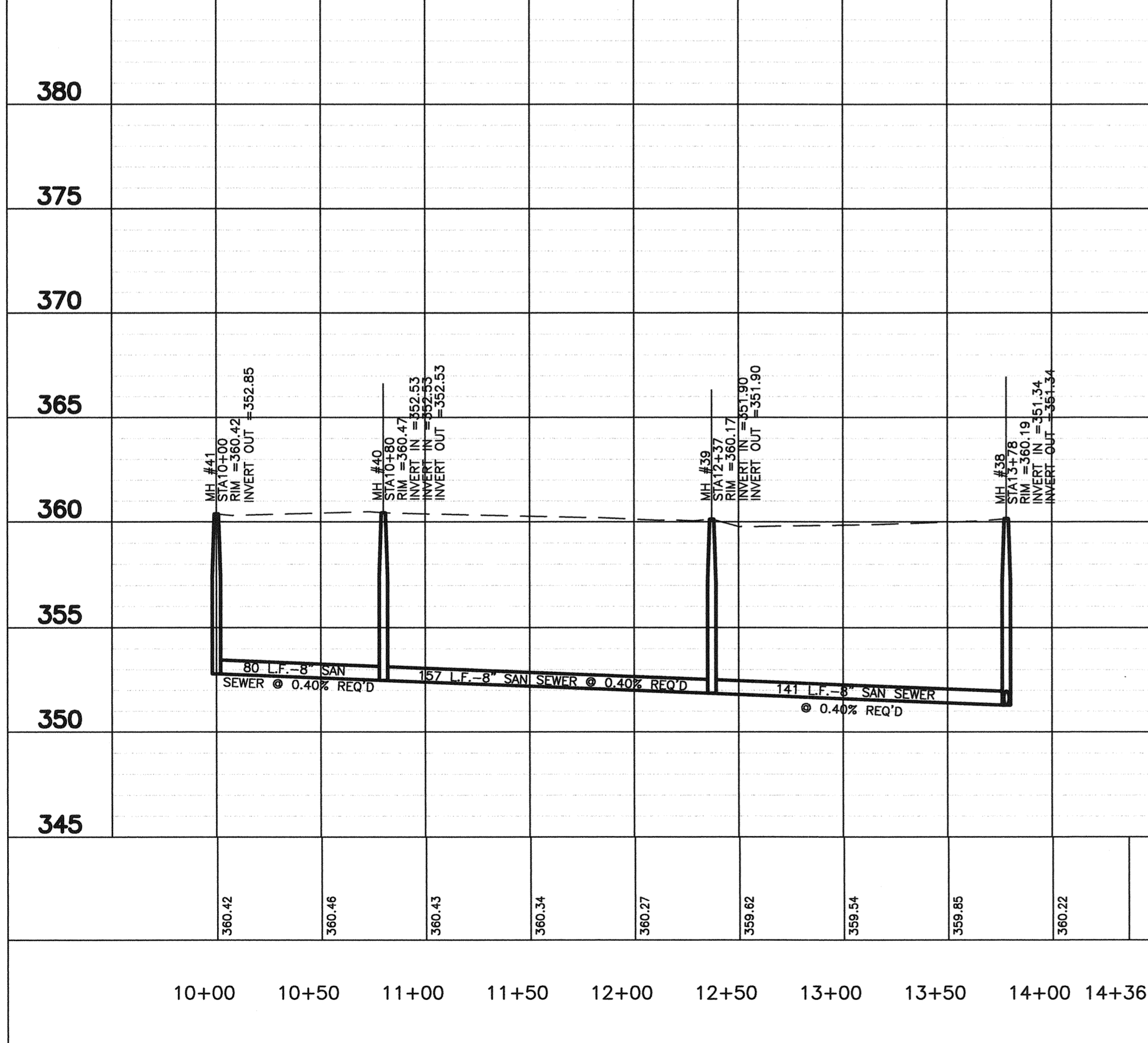
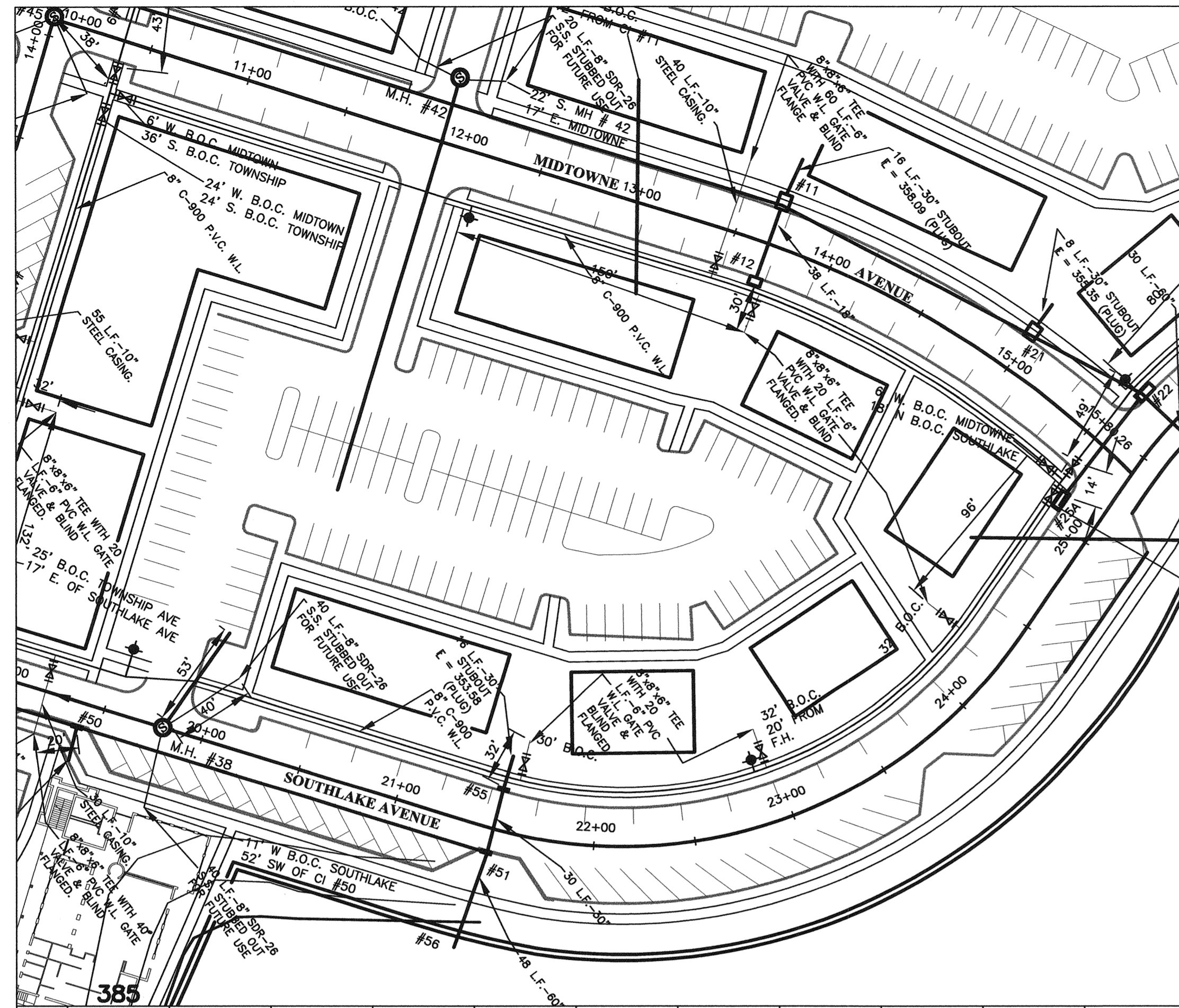
KERIOTH CORPORATION

REVISIONS		
NO.	DATE	BY
1	1/06/2005	N.O.H.
2		
3		
4		
5		
6		

SCALE
HORIZ: 1" = 50'
VERT: 1" = 5'
 DATE
 APPROVED BY **DSB**
 DRAWN BY **AUJ**
 CHECKED BY **JHG**

SHEET TITLE	
SOUTHTOWNE AVE PLAN/PROFILE	
FILE NAME	SHEET NO. 10

M:\Kerloth Corp\Kerloth phase 2.com.dwg\Commercial Phase 2 Rec.dwg, southtowne pp+1001, 1/24/2007 10:05:05 AM, Jhg/jmp



REVISION #1
CHANGED SANITARY SEWER MANHOLES: #38, #39, #41, #42, #43, #47, #47A, REMOVED M.H. #50. UPDATED SITE & BUILDING PLACEMENT. ADDED WATER AND SEWER SERVICES AND NOTES.

REVISION #2
CHANGED SANITARY SEWER MANHOLES: 47, 47A AND 2A

RECORD DRAWINGS 9-14-2006

DCI **DIVERSIFIED CONSULTANTS, INC.**
CONSULTING ENGINEERS ... CITY, COUNTY, AND REGIONAL PLANNERS
395 EDGEWOOD TERRACE
JACKSON, MS 39206

This document, and the ideas and designs incorporated herein, as an instrument of professional services, is the property of DIVERSIFIED CONSULTANTS, INC. and is not to be used, in whole or part, for any other project without the written authority of DIVERSIFIED CONSULTANTS, INC.

STREETS AND SITE UTILITIES
PHASE 2 COMMERCIAL
KERIOTH CORPORATION

REVISIONS		
NO.	DATE	BY
1	1/06/05	N.O.H.
2	6/17/05	J.H.G.
3		
4		
5		
6		

SCALE
HORZ.: 1" = 50'
VERT.: 1" = 5'
DATE
APPROVED BY **DSB**
DRAWN BY **AUJ**
CHECKED BY **JHG**

SHEET TITLE
MIDTOWNE TO SOUTHLAKE, SOUTHLAKE TO EXIST. SAN SEWER-PLAN/PROFILE
FILE NAME
SHEET NO. **11**