

THE TOWNSHIP AT COLONY PARK

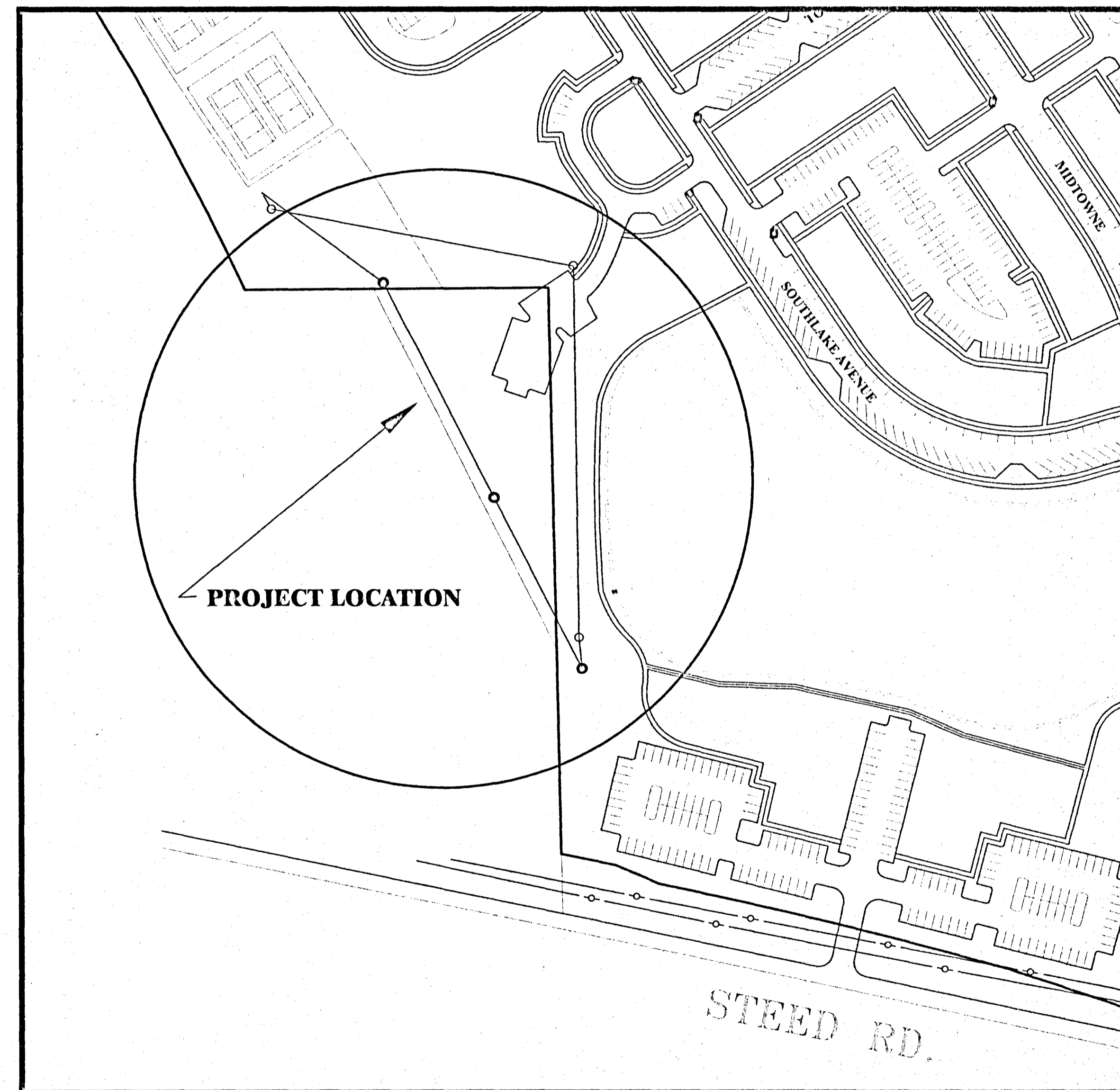
WASTEWATER INTERCEPTOR RELOCATION

CITY OF RIDGELAND, MS

OWNER:
THE TOWNSHIP LAND CO., LLC

BY:
KERIOTH CORPORATION

PREPARED BY:
DIVERSIFIED CONSULTANTS



SHEET INDEX

TITLE	SHEET NO.
COVER SHEET	1
PLAN/PROFILE SHEET	2
RIDGELAND STANDARD DETAILS SHEET SEWER	3
EROSION CONTROL DETAIL	4

FEBRUARY 2006

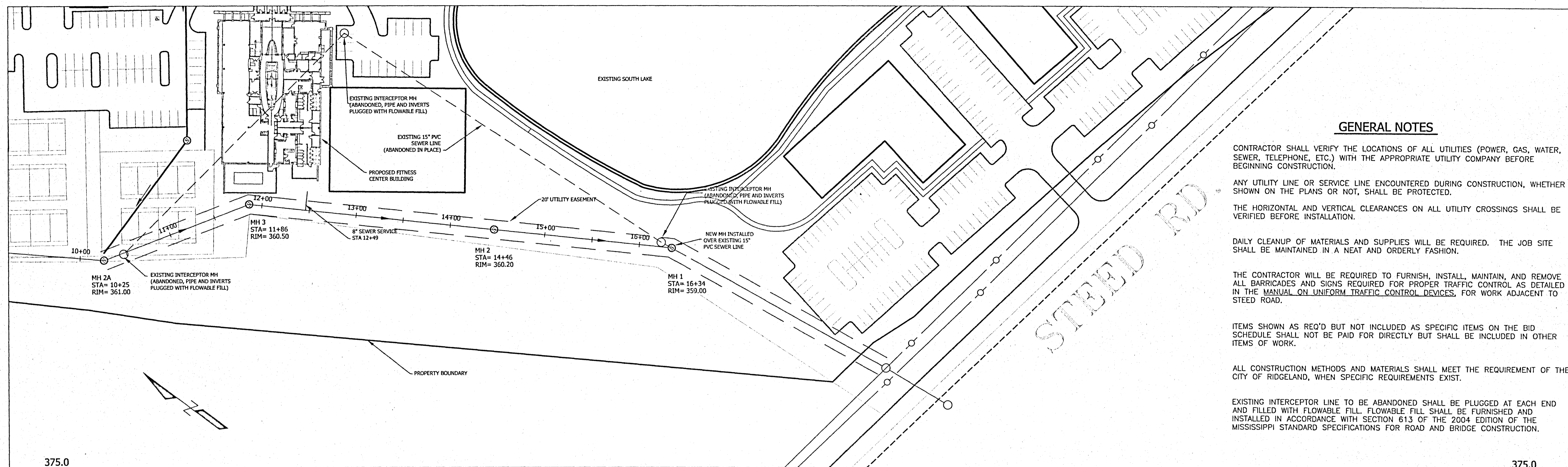
DCI DIVERSIFIED
CONSULTANTS, INC.
CONSULTING ENGINEERS ... CITY, COUNTY, AND REGIONAL PLANNERS

395 EDGEWOOD TERRACE
JACKSON, MS 39206

D. SCOTT BONNER
2/2/2006
D. SCOTT BONNER - ENGINEER

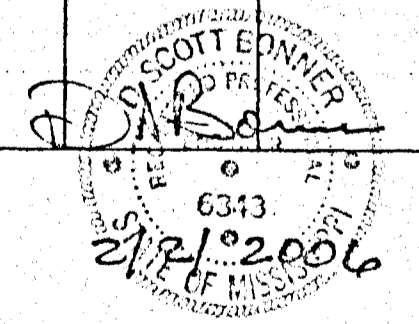
RECORD DRAWINGS 2-02-2006

PWP-02022



GENERAL NOTES

- CONTRACTOR SHALL VERIFY THE LOCATIONS OF ALL UTILITIES (POWER, GAS, WATER, SEWER, TELEPHONE, ETC.) WITH THE APPROPRIATE UTILITY COMPANY BEFORE BEGINNING CONSTRUCTION.
- ANY UTILITY LINE OR SERVICE LINE ENCOUNTERED DURING CONSTRUCTION, WHETHER SHOWN ON THE PLANS OR NOT, SHALL BE PROTECTED.
- THE HORIZONTAL AND VERTICAL CLEARANCES ON ALL UTILITY CROSSINGS SHALL BE VERIFIED BEFORE INSTALLATION.
- DAILY CLEANUP OF MATERIALS AND SUPPLIES WILL BE REQUIRED. THE JOB SITE SHALL BE MAINTAINED IN A NEAT AND ORDERLY FASHION.
- THE CONTRACTOR WILL BE REQUIRED TO FURNISH, INSTALL, MAINTAIN, AND REMOVE ALL BARRICADES AND SIGNS REQUIRED FOR PROPER TRAFFIC CONTROL AS DETAILED IN THE MANUAL ON UNIFORM TRAFFIC CONTROL DEVICES, FOR WORK ADJACENT TO STEED ROAD.
- ITEMS SHOWN AS REQ'D BUT NOT INCLUDED AS SPECIFIC ITEMS ON THE BID SCHEDULE SHALL NOT BE PAID FOR DIRECTLY BUT SHALL BE INCLUDED IN OTHER ITEMS OF WORK.
- ALL CONSTRUCTION METHODS AND MATERIALS SHALL MEET THE REQUIREMENT OF THE CITY OF RIDGELAND, WHEN SPECIFIC REQUIREMENTS EXIST.
- EXISTING INTERCEPTOR LINE TO BE ABANDONED SHALL BE PLUGGED AT EACH END AND FILLED WITH FLOWABLE FILL. FLOWABLE FILL SHALL BE FURNISHED AND INSTALLED IN ACCORDANCE WITH SECTION 613 OF THE 2004 EDITION OF THE MISSISSIPPI STANDARD SPECIFICATIONS FOR ROAD AND BRIDGE CONSTRUCTION.



RECORD DRAWINGS 2-02-2006

DCI **DIVERSIFIED CONSULTANTS, INC.**
 CONSULTING ENGINEERS ... CITY, COUNTY, AND REGIONAL PLANNERS
 395 EDGEWOOD TERRACE
 JACKSON, MS 39206

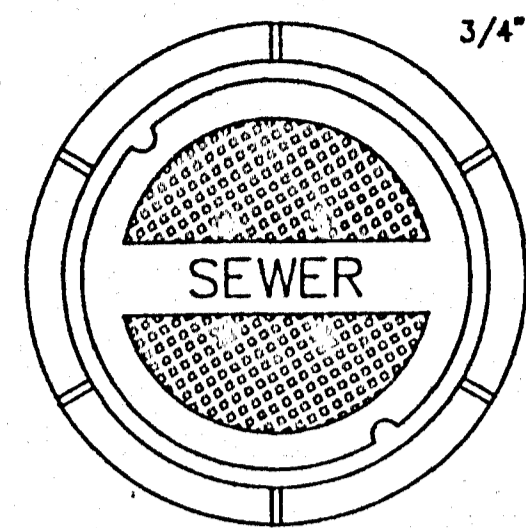
This document, and the ideas and designs incorporated herein, as an instrument of professional services, is the property of DIVERSIFIED CONSULTANTS, INC. and is not to be used, in whole or part, for any other project without the written authority of DIVERSIFIED CONSULTANTS, INC.

WASTEWATER INTERCEPTOR RELOCATION
KERIOTH CORPORATION

REVISIONS		
NO.	DATE	BY
1		
2		
3		
4		
5		
6		

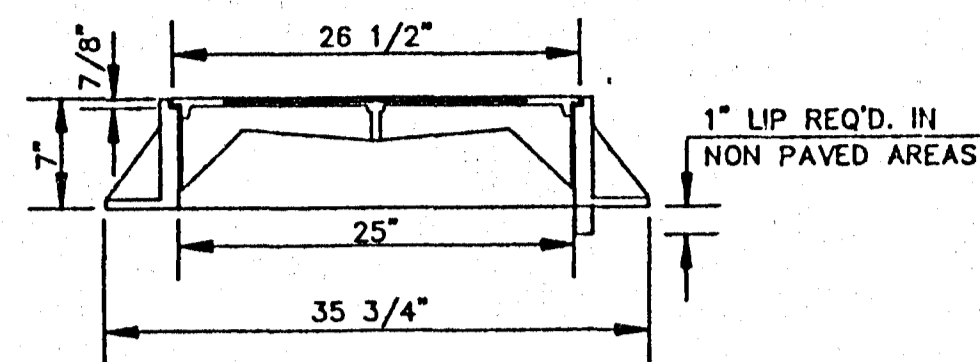
SCALE	1" = 50'
DATE	
APPROVED BY	D.S.B.
DRAWN BY	A.U.J.
CHECKED BY	J.H.G.
TRACED BY	

SHEET TITLE	
PLAN/PROFILE SHEET	
FILE NAME	SHEET NO. 2

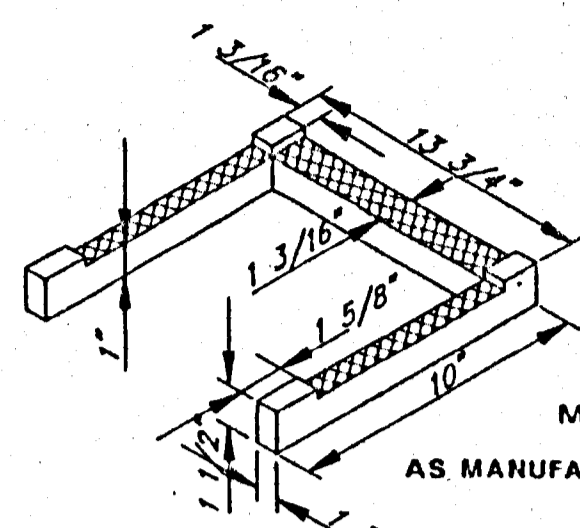


TOP PLAN OF COVER

FRAME & COVER WEIGHT 420 LBS.



SECTION

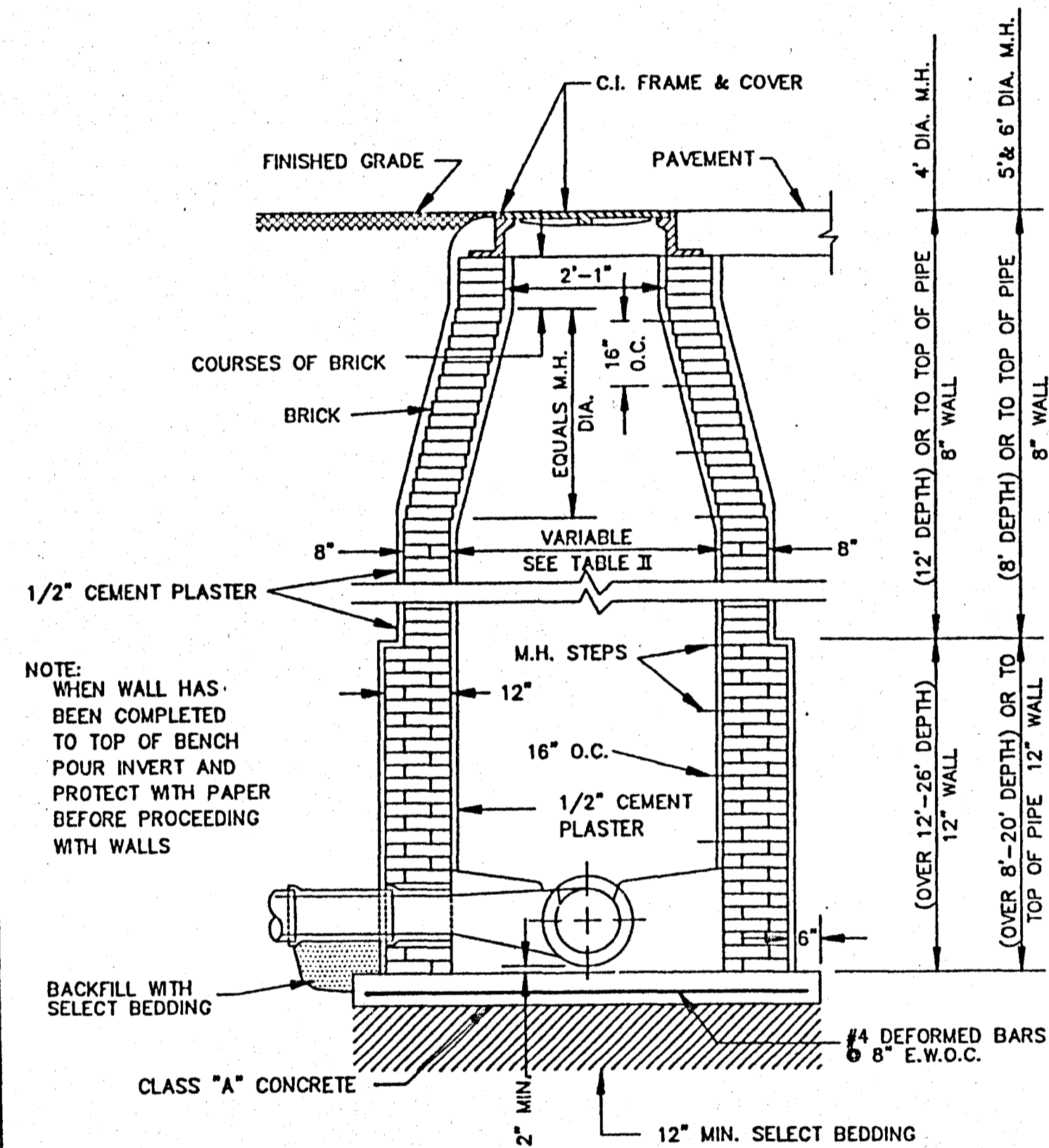


DETAIL 'B'

MODEL NO. PS2 - PF
AS MANUFACTURED BY M.A. INDUSTRIES INC.

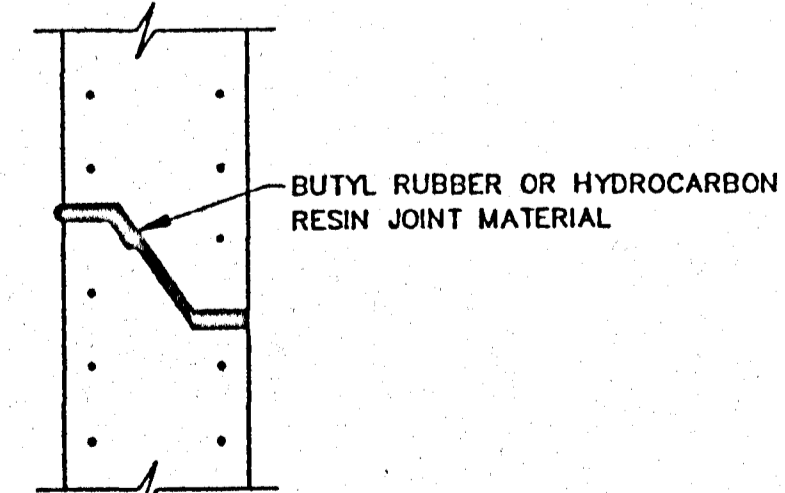
STANDARD MANHOLE FRAME AND COVER

N.T.S.



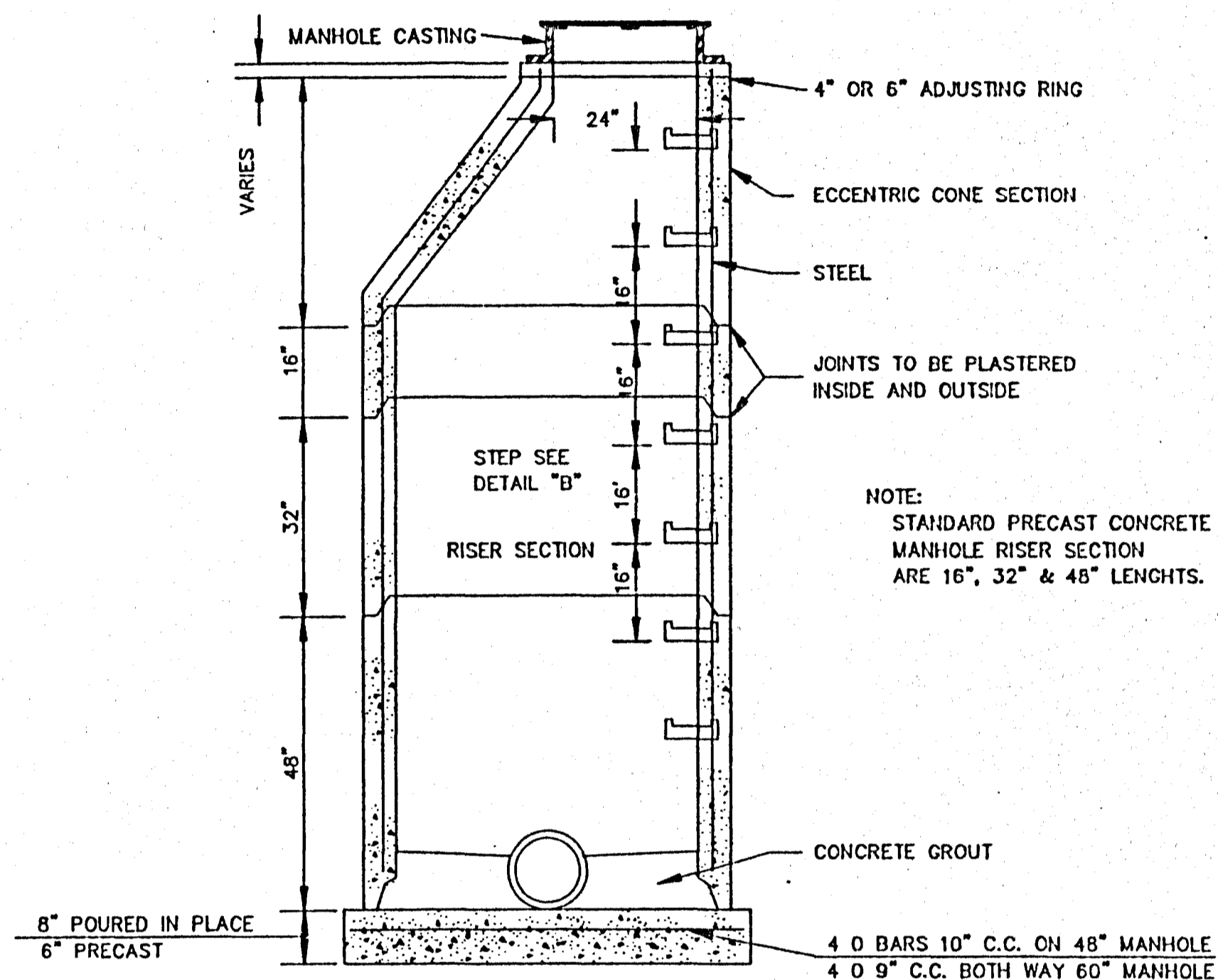
STANDARD BRICK MANHOLE

N.T.S.



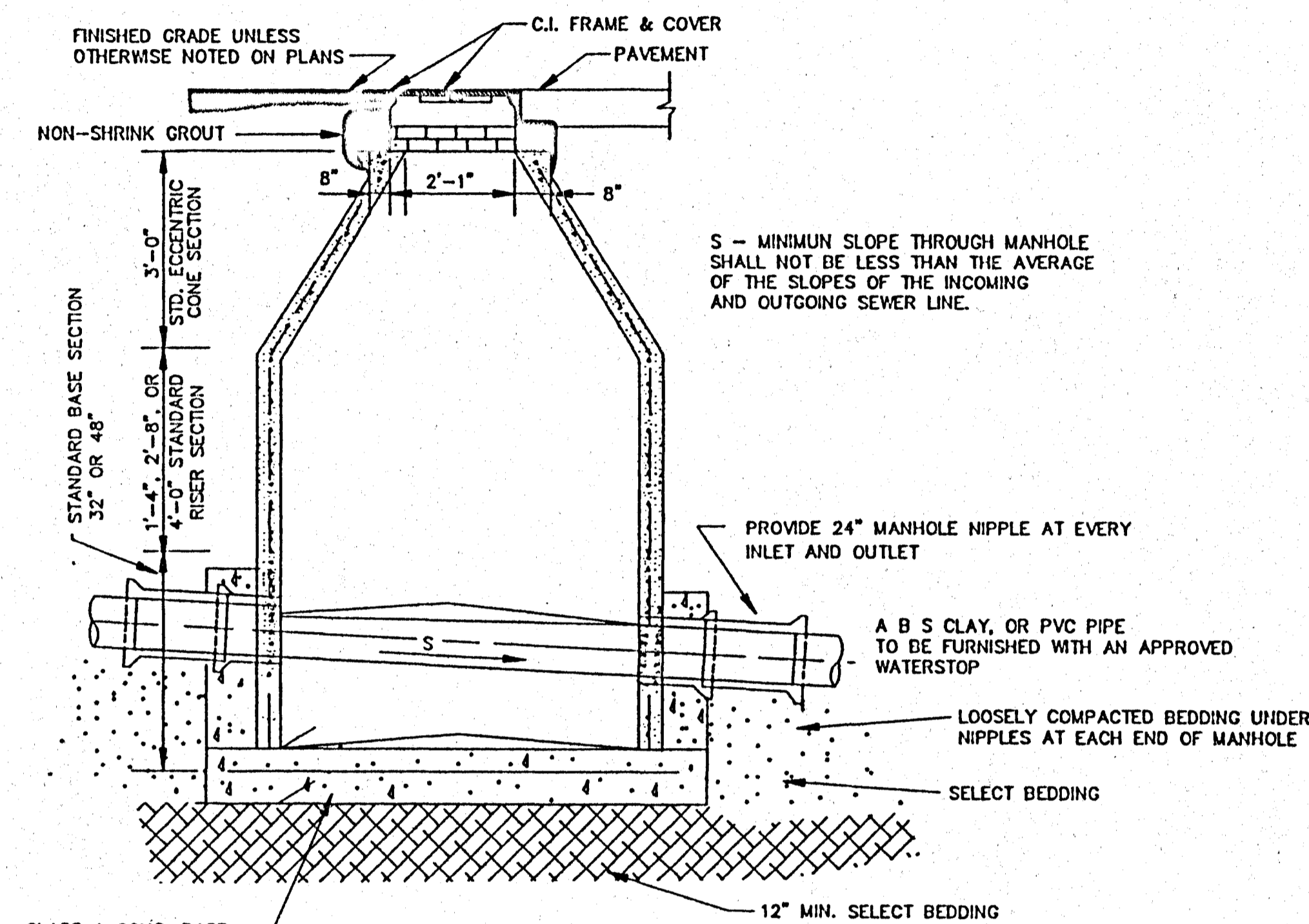
TYPICAL PRECAST CONCRETE MANHOLE JOINT DETAIL

N.T.S.



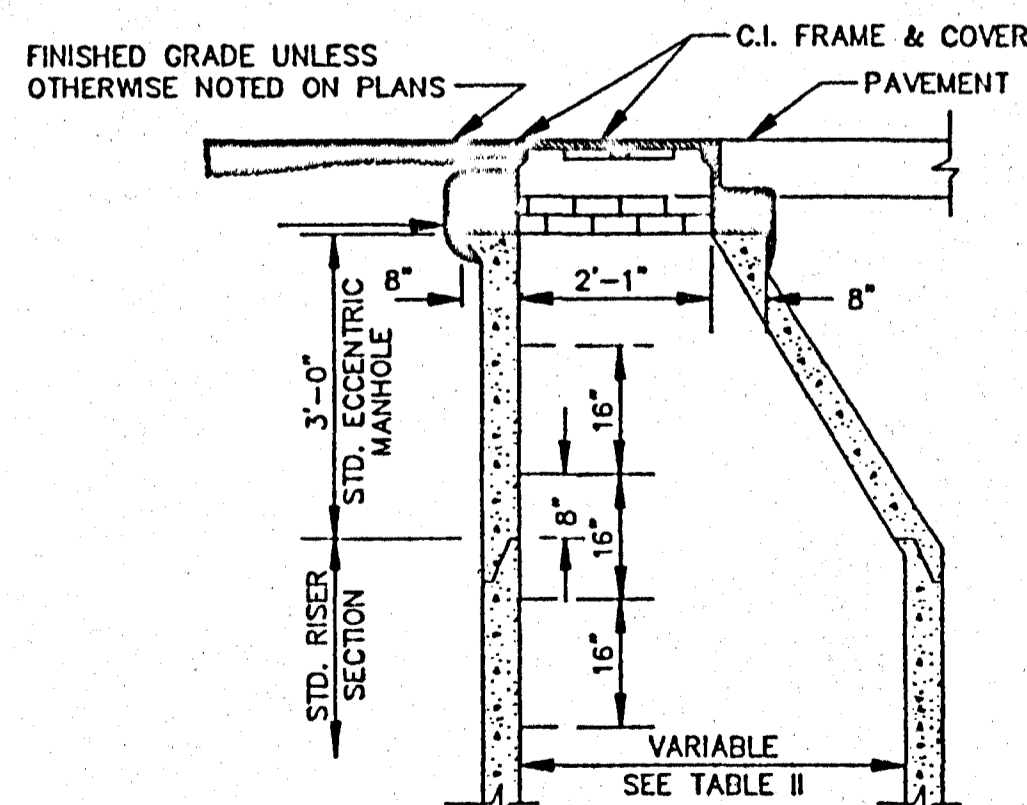
SECTION OF PRECAST CONCRETE MANHOLE

N.T.S.



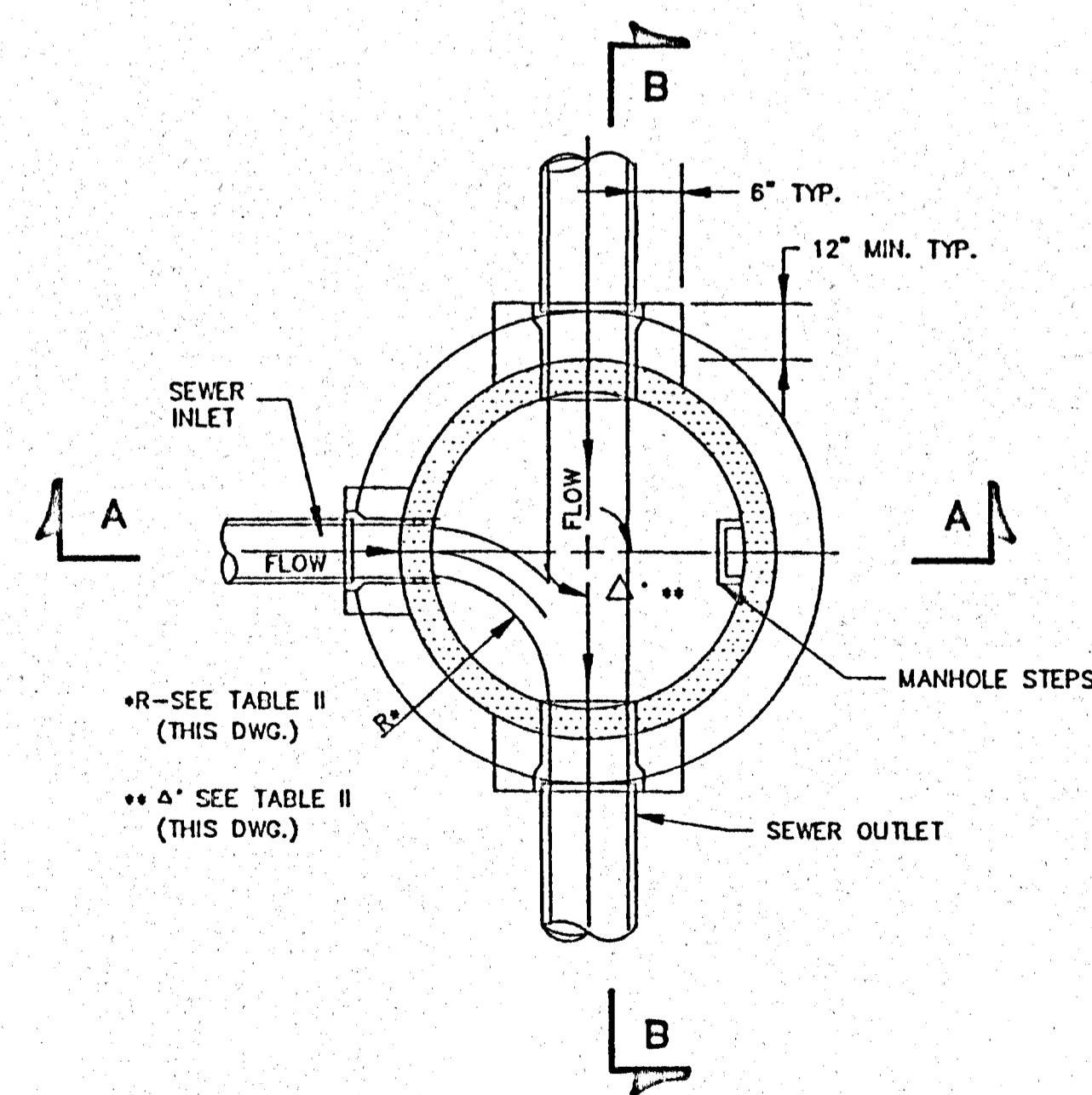
SECTION B-B

N.T.S.



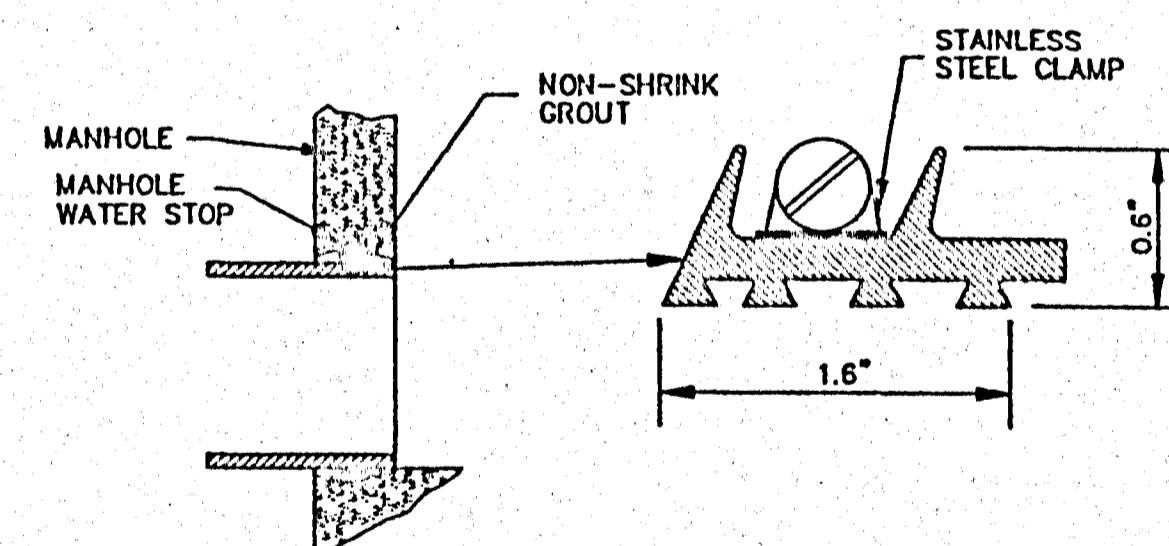
STANDARD ECCENTRIC CONE FOR ALL DIAMETER MANHOLES

N.T.S.



SECTIONAL PLAN STANDARD MANHOLE

N.T.S.



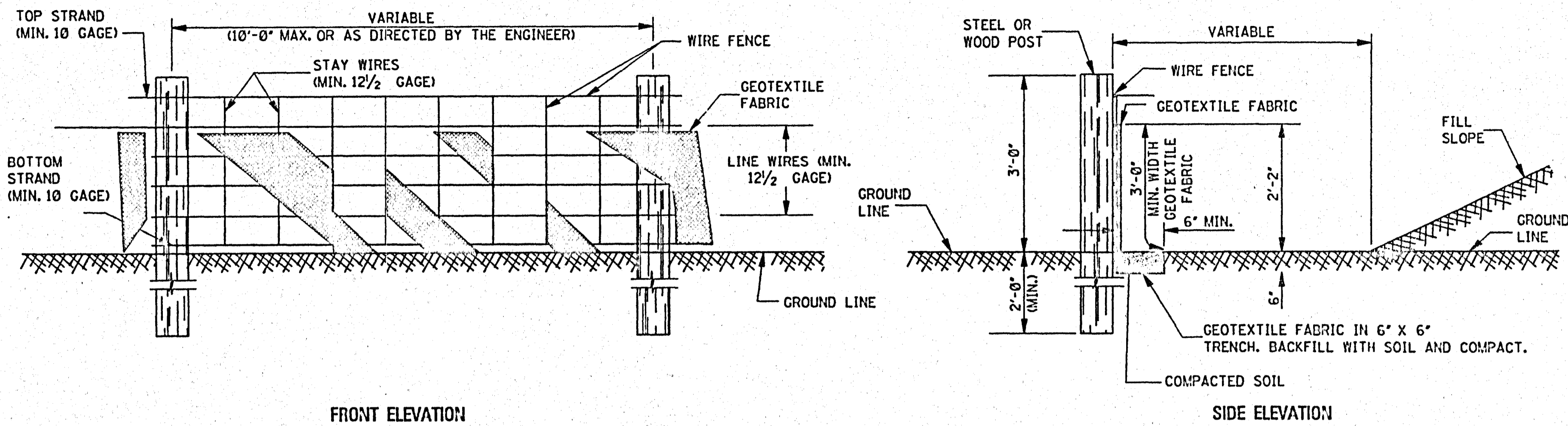
TYPICAL MANHOLE WATER STOP FOR ABS, CLAY OR PVC PIPE

EXISTING AND "STRADDLE" MANHOLES
N.T.S.

CITY OF RIDGELAND, MS.

STANDARD DETAILS

DESN:		THE CITY OF RIDGELAND	DRAWING NO.
DRWN:			
CHKD:			
SCALE:			



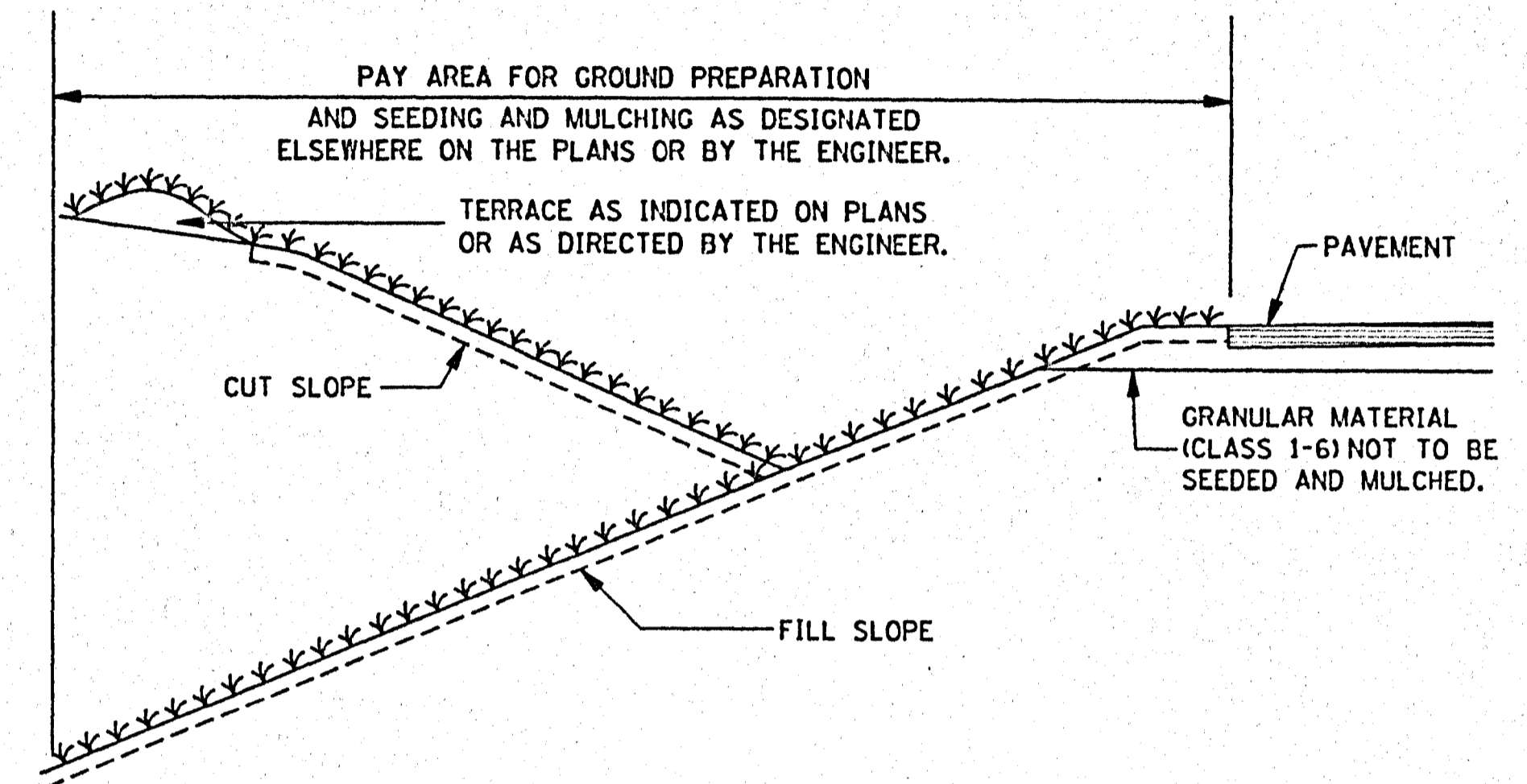
FRONT ELEVATION

SIDE ELEVATION

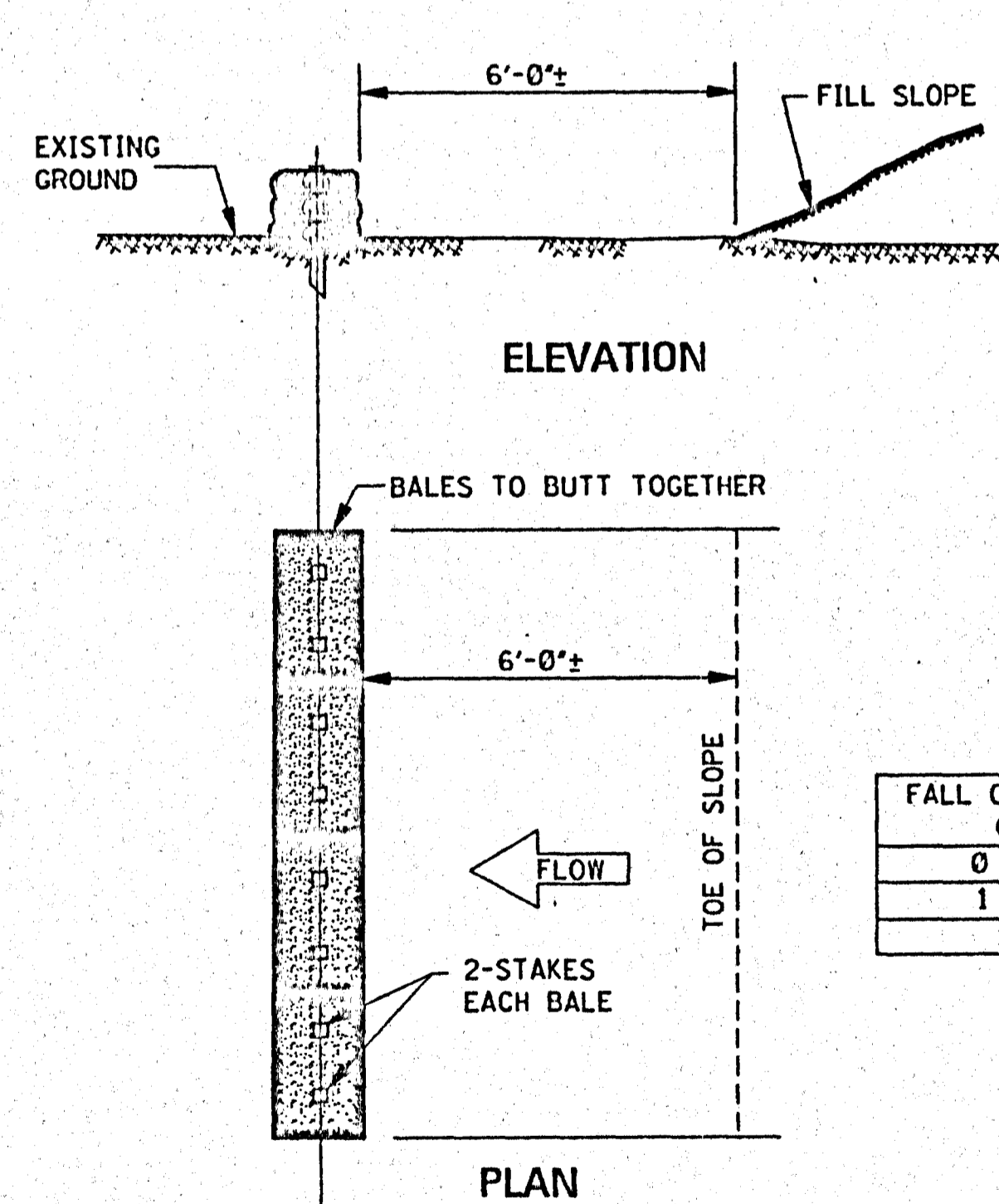
TEMPORARY SILT FENCE

NOTES:

1. WIRE SHALL BE MINIMUM OF 32 IN WIDTH AND SHALL HAVE A MINIMUM OF 6 LINE WIRES WITH 12 STAY SPACING.
2. GEOTEXTILE FABRIC SHALL BE A MINIMUM OF 36 IN WIDTH AND SHALL BE FASTENED ADEQUATELY TO THE WIRE AS DIRECTED BY THE ENGINEER.
3. STEEL POST SHALL BE 5'-0" IN HEIGHT AND OF THE SELF-FASTENER ANGLE STEEL TYPE. WOOD POST SHALL BE A MINIMUM OF 5'-0" IN HEIGHT AND 3" OR MORE IN DIAMETER. WIRE FENCE SHALL BE FASTENED TO WOODEN POST WITH NOT LESS THAN 9 GAGE WIRE STAPLES 1" LONG.
4. GEOTEXTILE FABRIC MEETING THE TYPE II MATERIAL REQUIREMENTS AND INSTALLED ACCORDING TO SPECIFICATIONS MAY BE USED WITHOUT WIRE FENCE.

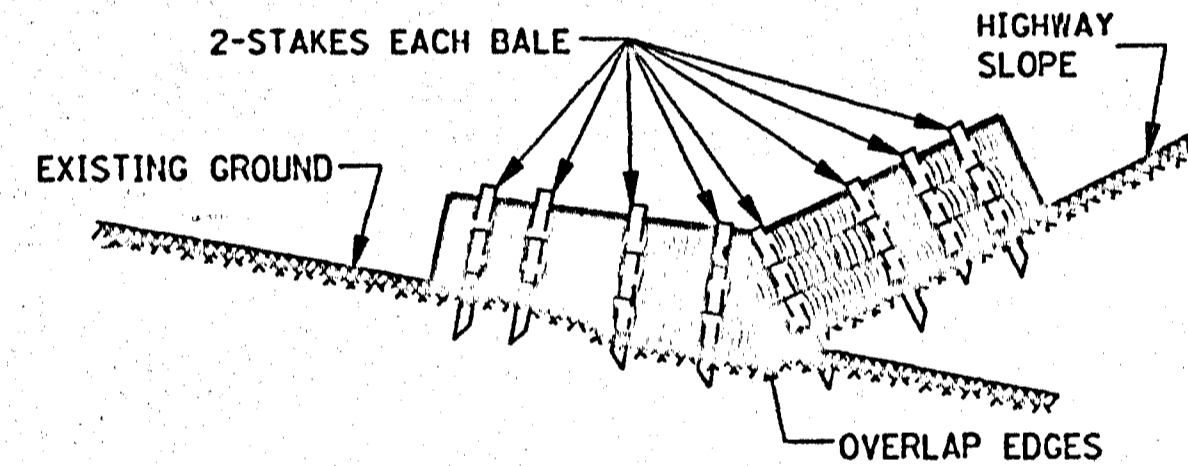


SEEDING AND MULCHING



ELEVATION

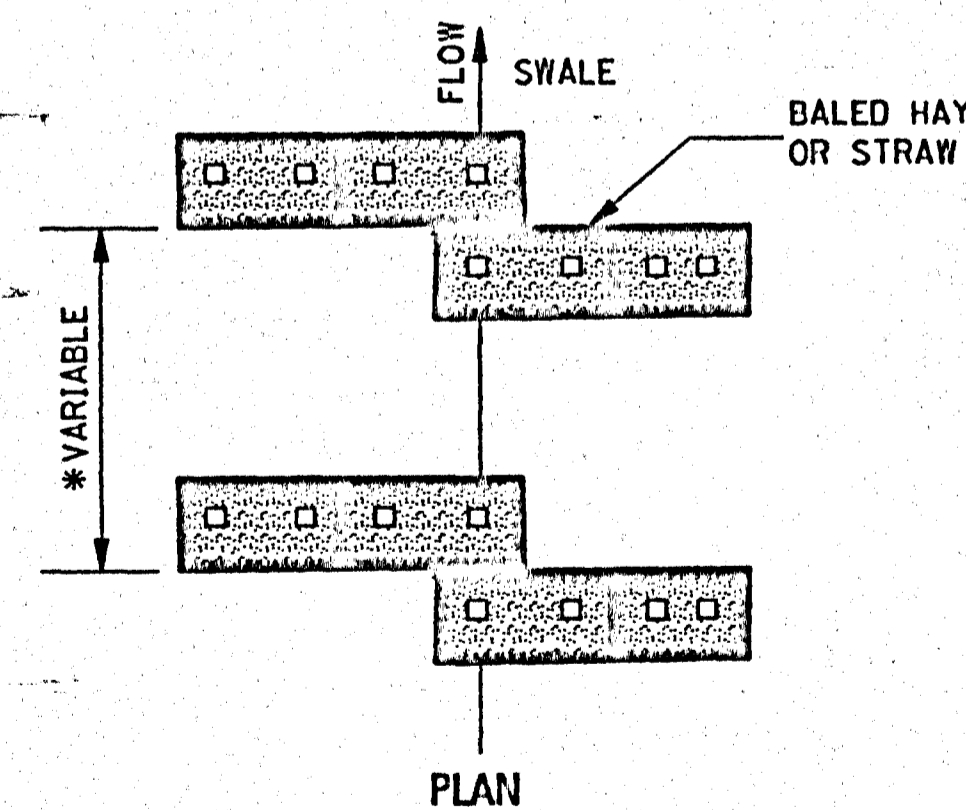
PLAN



ELEVATION

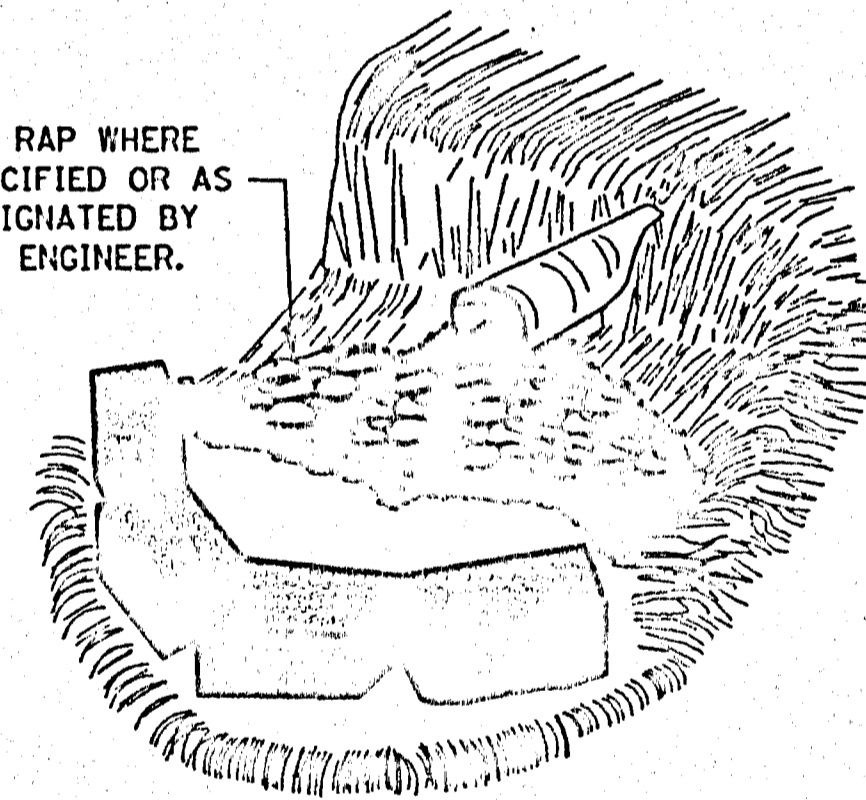
NOTE: SIMILAR TREATMENT TO BE USED IN DITCHES.

FALL OF DITCH (%)	DISTANCE* (ft)
0 - 1	100'
1 - 2	50'
>2	25'

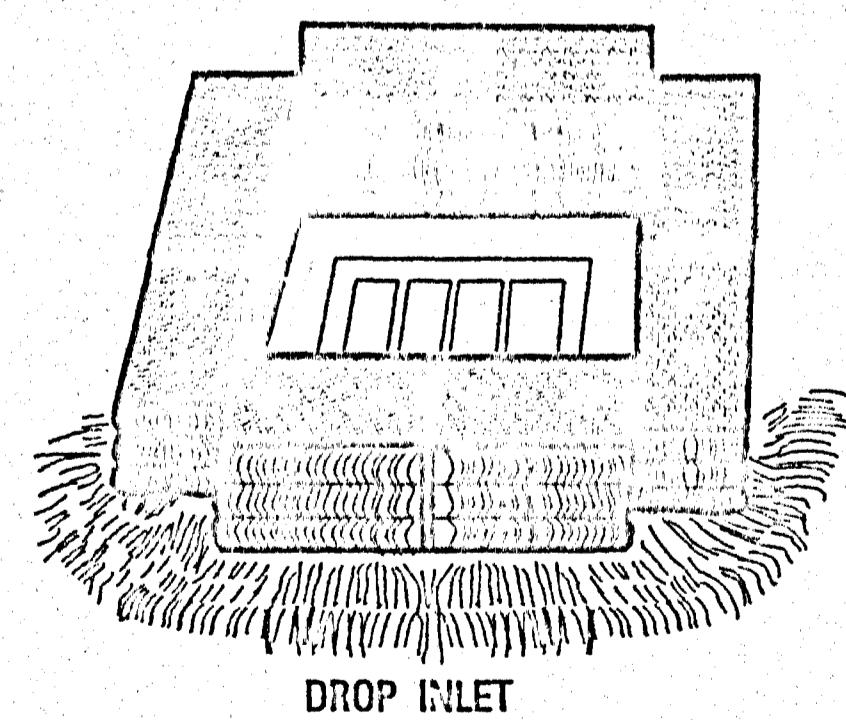


PLAN

RIP RAP WHERE SPECIFIED OR AS DESIGNATED BY THE ENGINEER.



CULVERT



DROP INLET

GENERAL NOTES:

1. THE CONTRACTOR SHALL BE REQUIRED TO FURNISH ALL MATERIALS AND PERFORM ALL WORK FOR THE PROPER INSTALLATION, MAINTENANCE AND REMOVAL OF TEMPORARY EROSION CONTROL MEASURES NECESSARY TO CONTROL SILTATION.
2. TEMPORARY BRUSH BARRIERS SHALL BE USED AS REQUIRED BUT WILL NOT BE MEASURED FOR SEPARATE PAYMENT.
3. THE USE OF TEMPORARY EROSION CONTROL MEASURES OTHER THAN TEMPORARY BRUSH BARRIERS WILL ONLY BE REQUIRED AND MEASURED FOR SEPARATE PAYMENT WHEN APPROPRIATE PAY ITEM(S) IS INCLUDED IN THE BID SCHEDULE OF THE PROPOSAL.

TEMPORARY EROSION CHECKS USING HAY OR STRAW BALES

NOTE: EMBED ALL BALES 3" MINIMUM INTO GROUND AND STAKE (2" X 2" X 36") SECURELY.

REVISIONS		
NO.	DATE	BY
1		
2		
3		
4		
5		
6		

SCALE	ITS
DATE	
APPROVED BY	D.S.B.
DRAWN BY	A.U.J.
CHECKED BY	J.H.G.
TRACED BY	

SHEET TITLE	
EROSION CONTROL	

FILE NAME	SHEET NO. 4
-----------	-------------