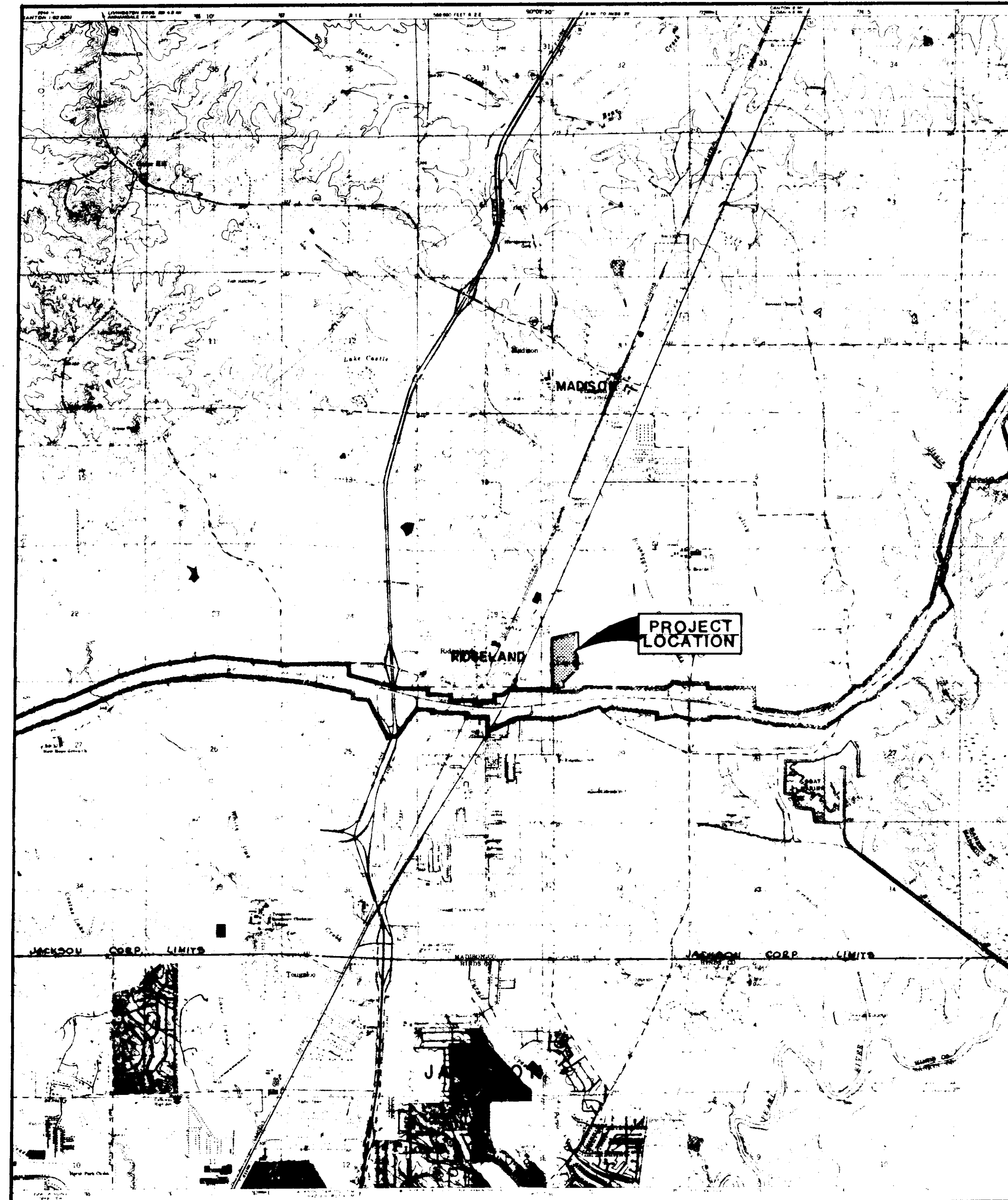


CONTRACT DRAWINGS FOR TRACE RIDGE SUBDIVISION PART I STREETS, DRAINAGE, SANITARY SEWER & WATER SYSTEM

ESTIMATED QUANTITIES

ITEM NO.	ITEM DESCRIPTION	ESTIMATED QUANTITY	UNIT
STREETS & DRAINAGE			
100-1	CLEARING AND GRUBBING	9.7	ACRES
200-1	EXCAVATION-COMMON	16,135	CY
200-2	EXCAVATION-CHANNEL	4,200	CY
200-3	EXCAVATION-STREET UNDERCUT	1,800	CY
200-4	EXCAVATION-DETENTION BASIN	6,500	CY
200-5	EMBANKMENT	3,000	CY
400-1	BLACK BASE COURSE	4,688	TONS
400-2	1-1/2" BITUMINOUS SURFACE COURSE	1,511	TONS
500-1	CONCRETE CURB AND GUTTER	11,365	LF
600-1	CURB INLETS	34	EA
600-2	15" REINFORCED CONCRETE PIPE	1427	LF
600-3	18" REINFORCED CONCRETE PIPE	1528	LF
600-4	21" REINFORCED CONC. PIPE	514	LF
600-5	24" REINFORCED CONCRETE PIPE	316	LF
600-6	27" REINFORCED CONC. PIPE	110	LF
600-7	36" REINFORCED CONCRETE PIPE	316	LF
600-8	15" FLARED END SECTION	2	EA
600-9	18" FLARED END SECTION	2	EA
600-10	21" FLARED END SECTION	1	EA
600-11	24" FLARED END SECTION	2	EA
600-12	27" FLARED END SECTION	1	LF
600-13	36" FLARED END SECTION	1	EA
600-14	JUNCTION BOX	1	EA
WATER DISTRIBUTION SYSTEM			
900-1	CONN. TO EXISTING WATER MAIN	2	EA
900-2	8" PVC WATER MAIN, C-900, CLASS 150	6,240	LF
900-3	6" PVC WATER MAIN, C-900, CLASS 150	3,500	LF
900-4	8"x8"x8" TEE	2	EA
900-5	8"x8"x6" TEE	14	EA
900-6	6"x6"x6" TEE	13	EA
900-7	6"x6" CROSS	1	EA
900-8	8" GATE VALVE WITH BOX	8	EA
900-9	6" GATE VALVE WITH BOX	11	EA
900-10	6" FIRE HYDRANT	16	EA
900-11	6" PLUG WITH 2" BLOWOFF	3	EA
900-12	SERVICE ASSEMBLY	148	EA
900-13	3/4" SERVICE LINE	4,700	LF
900-14	SERVICE MARKERS	148	EA
900-15	8" PLUG WITH 2" BLOW-OFF	1	EA



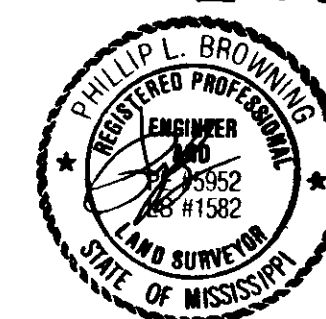
VICINITY MAP

INDEX TO DRAWINGS

SHEET NO.	DESCRIPTION
1	COVER SHEET
2	GENERAL LAYOUT
3	DRAINAGE LAYOUT
4-12	PLAN-PROFILE SHEETS
13	DETENTION BASIN
14	8" WATER MAIN
15	WATER DETAILS
16	SEWER DETAILS
17	DRAINAGE DETAILS

ESTIMATED QUANTITIES

ITEM NO.	ITEM DESCRIPTION	ESTIMATED QUANTITY	UNIT
SANITARY SEWER SYSTEM			
1000-1	CONNECTION TO EXISTING MANHOLE	1	EA
1000-2	8" GRAVITY SANITARY SEWER (0'-8')	3083	LF
1000-3	8" GRAVITY SANITARY SEWER (8'-12')	1070	LF
1000-4	8" GRAVITY SANITARY SEWER (12'-18')	344	LF
1000-5	12" GRAVITY SAN. SEWER (0'-8')	1196	LF
1000-6	12" GRAVITY SAN. SEWER (8'-12')	328	LF
1000-7	12" GRAVITY SAN. SEWER (12'-16')	93	LF
1000-8	48" STANDARD MH (0'-8')	19	EA
1000-9	48" STANDARD MH (8'-12')	4	EA
1000-10	48" STANDARD MH (12'-18')	3	EA
1000-11	6"x8" SERVICE TEE	55	EA
1000-12	6"x12" SERVICE TEE	6	EA
1000-13	6" SERVICE LINE	2950	LF
1000-14	8" DUCTILE IRON PIPE	180	LF
1000-15	UNDERCUT & SELECT BACKFILL	485	CY
1000-16	SERVICE MARKERS	100	EA
SOIL EROSION AND SILT CONTROL			
1100-1	SOIL EROSION AND SILT CONTROL		LS
1100-2	SOLID SOD	70	SY
SEEDING AND MULCHING			
1200-1	SEEDING AND MULCHING	4.8	ACRES



I hereby certify that a final field survey was conducted and that these "as built" plans resulted from said survey and are true and correct to the best of my knowledge. I further certify that each improvement has been constructed in accordance with City specifications.

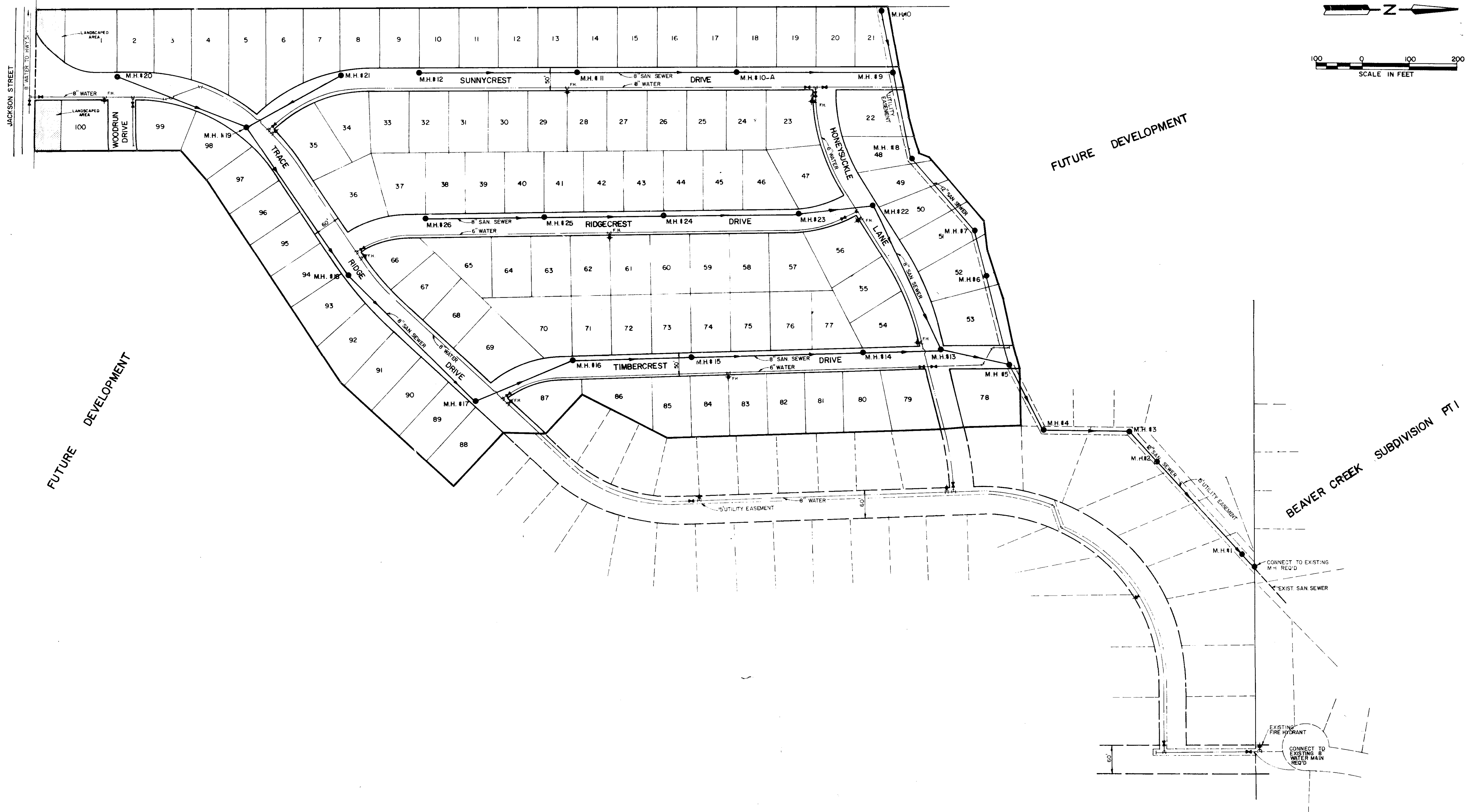
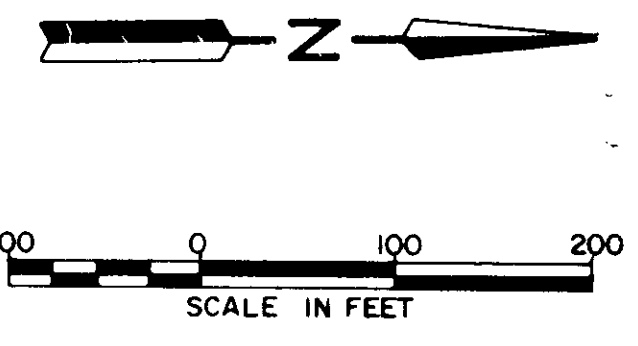
Phillip L. Browning, P. E. No. 5952

REVISED: NOV., 1986

AS BUILTS
JUNE, 1987

Prepared By:
Browning, Inc.
CONSULTING ENGINEERS - SURVEYORS
P. O. Box 12711
1058 Ridgewood Place
JACKSON, MISSISSIPPI 39202-2711

PWP-02003

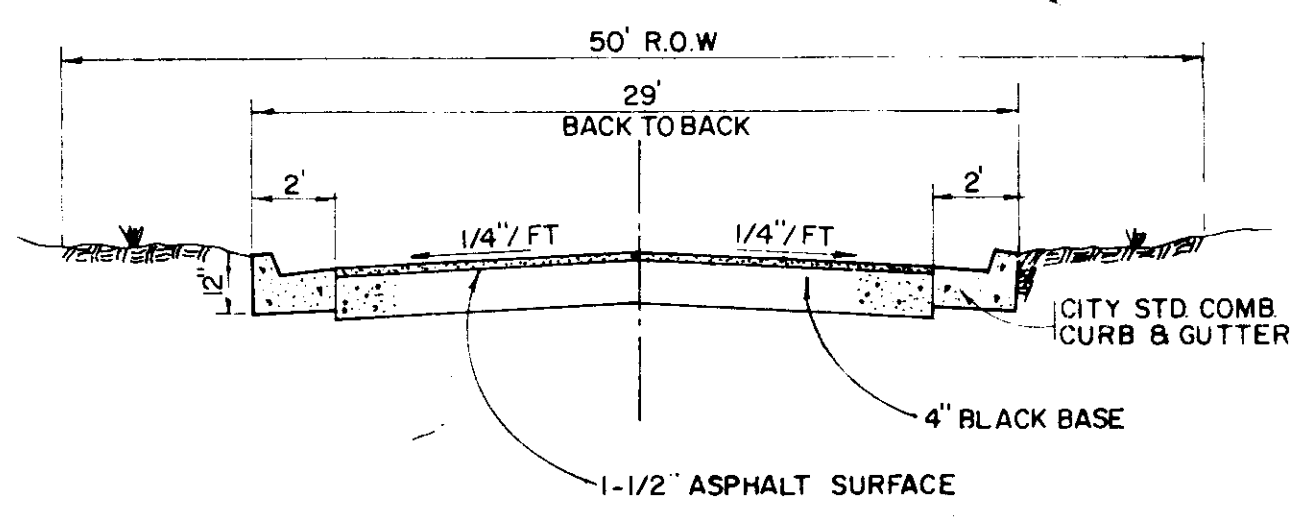


FUTURE DEVELOPMENT

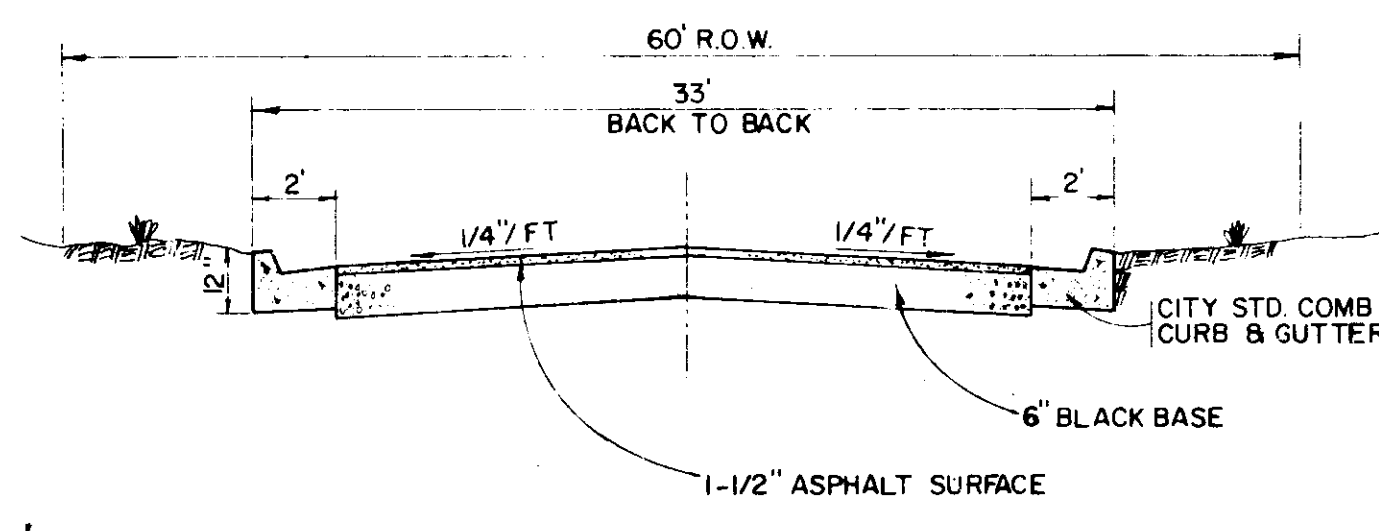
FUTURE DEVELOPMENT

BEAVER CREEK SUBDIVISION PT I

NOTE: CONNECTION TO THE EXISTING WATER MAIN WILL BE MADE BY THE CITY OF RIDGE AND WITH MATERIALS FURNISHED BY THE CONTRACTOR.



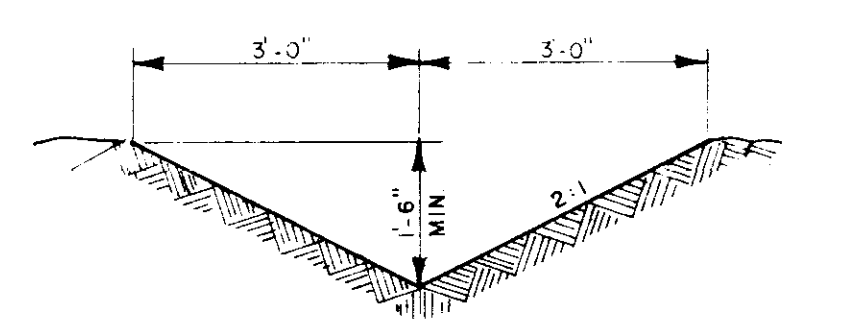
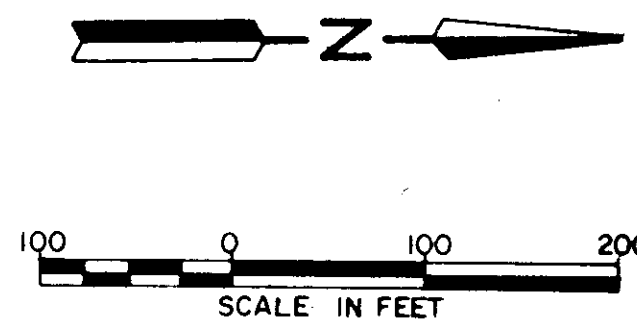
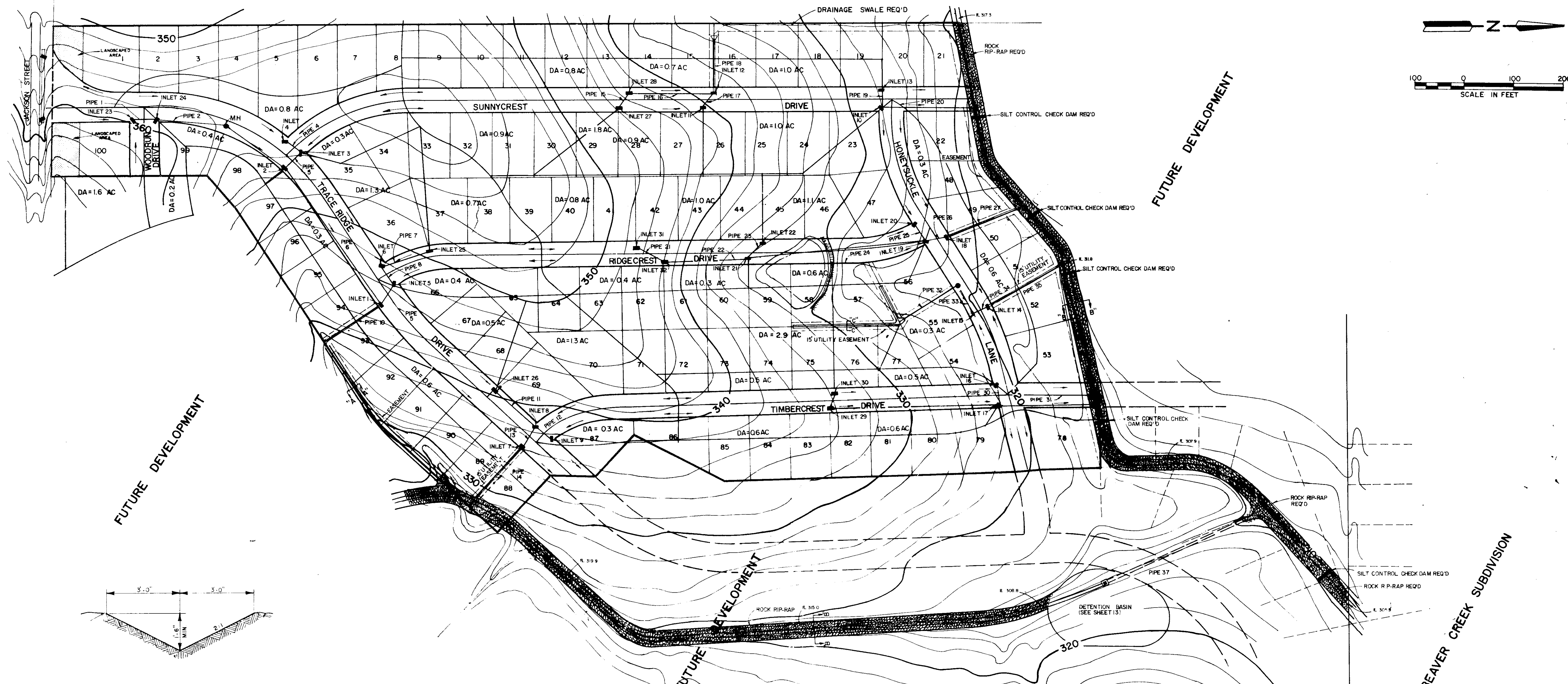
TYPICAL LOCAL STREET SECTION
(50' R.O.W.)



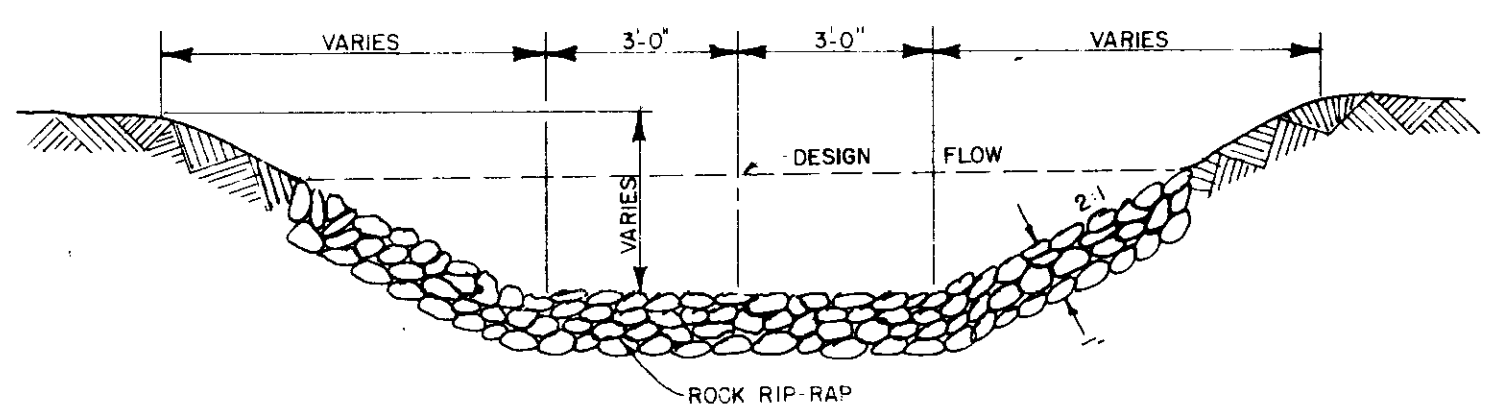
TYPICAL COLLECTOR STREET SECTION
(60' R.O.W.)

Prepared By
Browning, Inc.
CONSULTING ENGINEERS - SURVEYORS
P. O. Box 12711
1056 Ridgewood Place
Jackson, Mississippi 39211

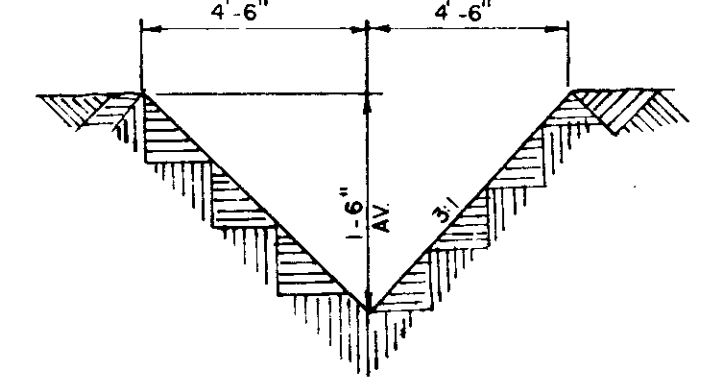
TRACE RIDGE SUBDIVISION			
PART ONE			
GENERAL LAYOUT			
BROWNING, INC.			
Consulting Engineers Jackson, Mississippi			
Designed By: P.L.B.	Scale: As Shown		
Drawn By: J.F.	Date: JUNE, 1980	Sheet 2 of 17	



TYPICAL DITCH SECTION "A-A"



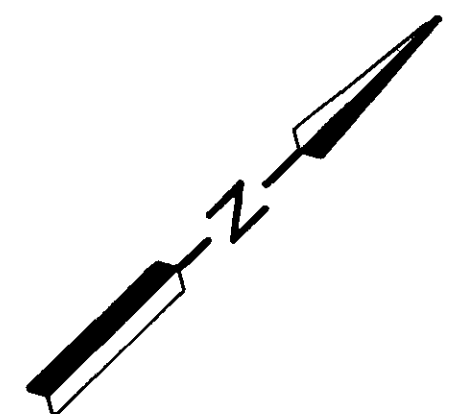
TYPICAL DITCH SECTION "B-B"



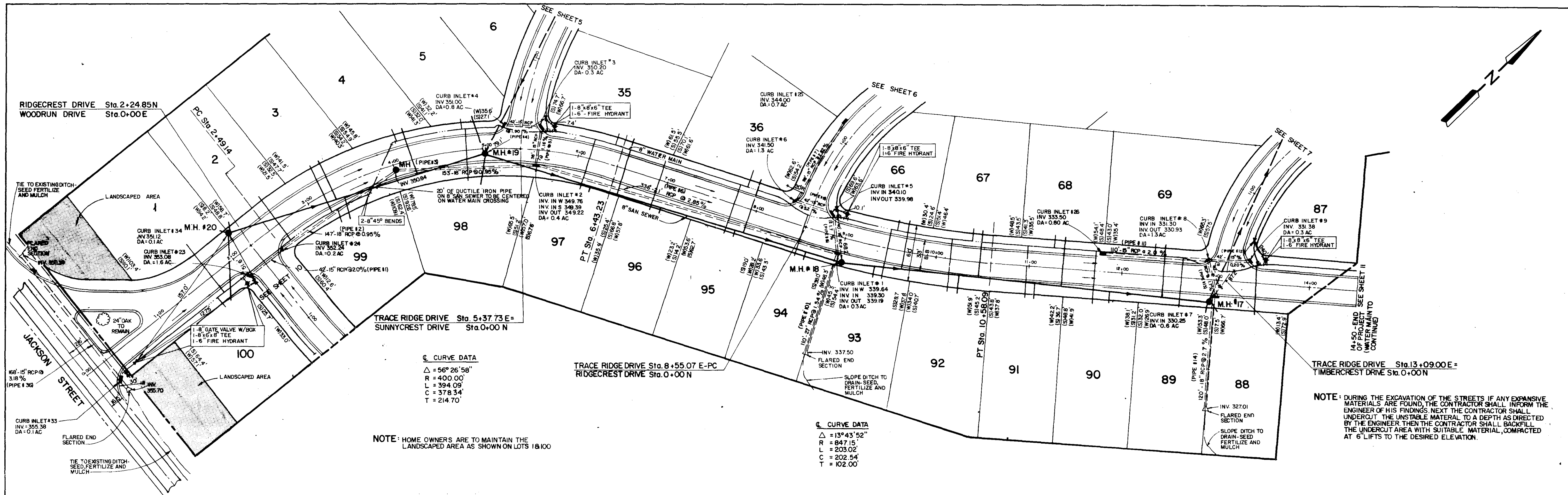
TYPICAL DITCH SECTION "C-C"

Prepared by
Browning, Inc.
 CONSULTING ENGINEERS - SURVEYORS
 P. O. Box 12711
 1008 Ridgewood Place
 Jackson, Mississippi 39211

TRACE RIDGE SUBDIVISION			
PART ONE			
DRAINAGE LAYOUT			
BROWNING, INC.			
Consulting Engineers Jackson, Mississippi			
Designed By: P.L.B.	Scale: AS SHOWN	Date: JUNE, 1988	Sheet: 3 of 11
Drawn By: J.F.			



PLAN	DATE
DESIGNED	
PLOTTED	
GRADES CHECKED	
RT. OF WAY CHECKED	
NO.	



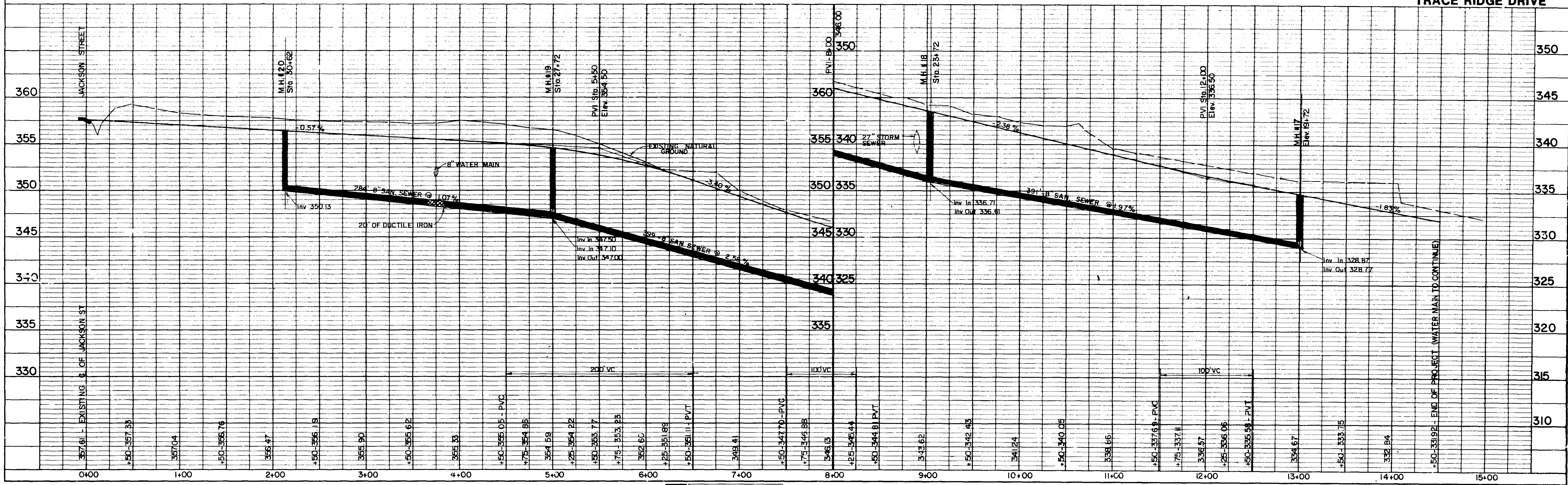
△ CURVE DATA
 $\Delta = 56^{\circ}26'58''$
 $R = 400.00'$
 $L = 394.09'$
 $C = 378.34'$
 $T = 214.70'$

△ CURVE DATA
 $\Delta = 13^{\circ}43'52''$
 $R = 847.15'$
 $L = 203.02'$
 $T = 202.54'$
 $T = 102.00'$

NOTE: HOME OWNERS ARE TO MAINTAIN THE LANDSCAPED AREA AS SHOWN ON LOTS 18100

NOTE: DURING THE EXCAVATION OF THE STREETS IF ANY EXPANSIVE MATERIALS ARE FOUND THE CONTRACTOR SHALL INFORM THE ENGINEER OF HIS FINDINGS NEXT THE CONTRACTOR SHALL UNDERCUT THE UNSTABLE MATERIAL TO A DEPTH AS DIRECTED BY THE ENGINEER THEN THE CONTRACTOR SHALL BACKFILL THE UNDERCUT AREA WITH SUITABLE MATERIAL, COMPACTED AT 6" LIFTS TO THE DESIRED ELEVATION.

PROFILE	DATE
DESIGNED	
PLOTTED	
GRADES CHECKED	
STRUCTURE NOTATION	
NO.	

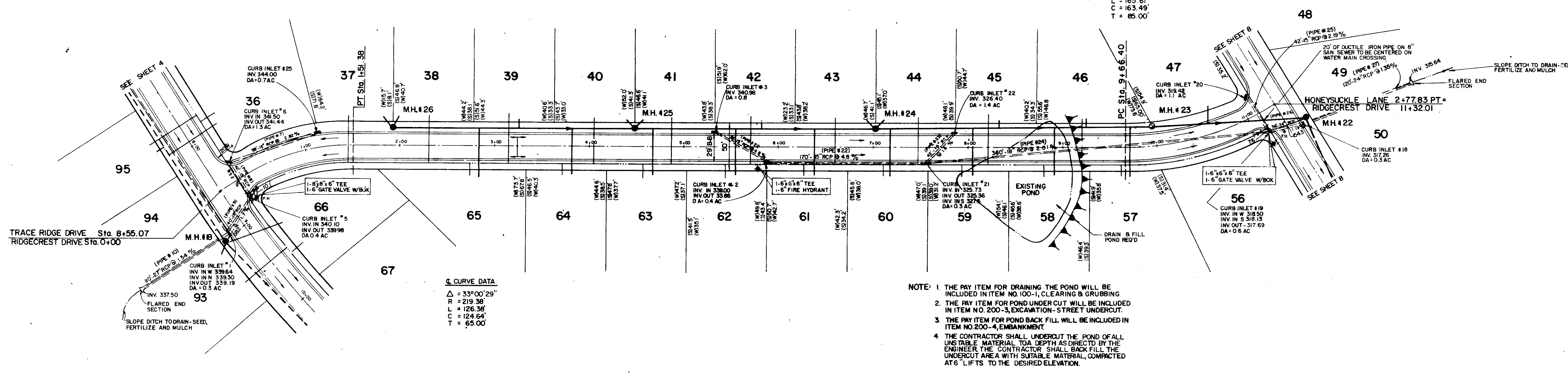
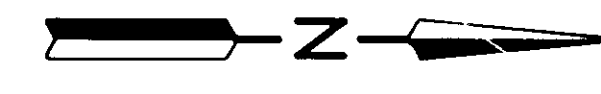


DATE	
BY	
NO.	
PLAN	
REVISED	
NOTED	
NO.	
NOTE	
NO.	
NO.	

DATE	
BY	
NO.	
PROFILE	
REVISED	
NOTED	
NO.	
NO.	
NO.	

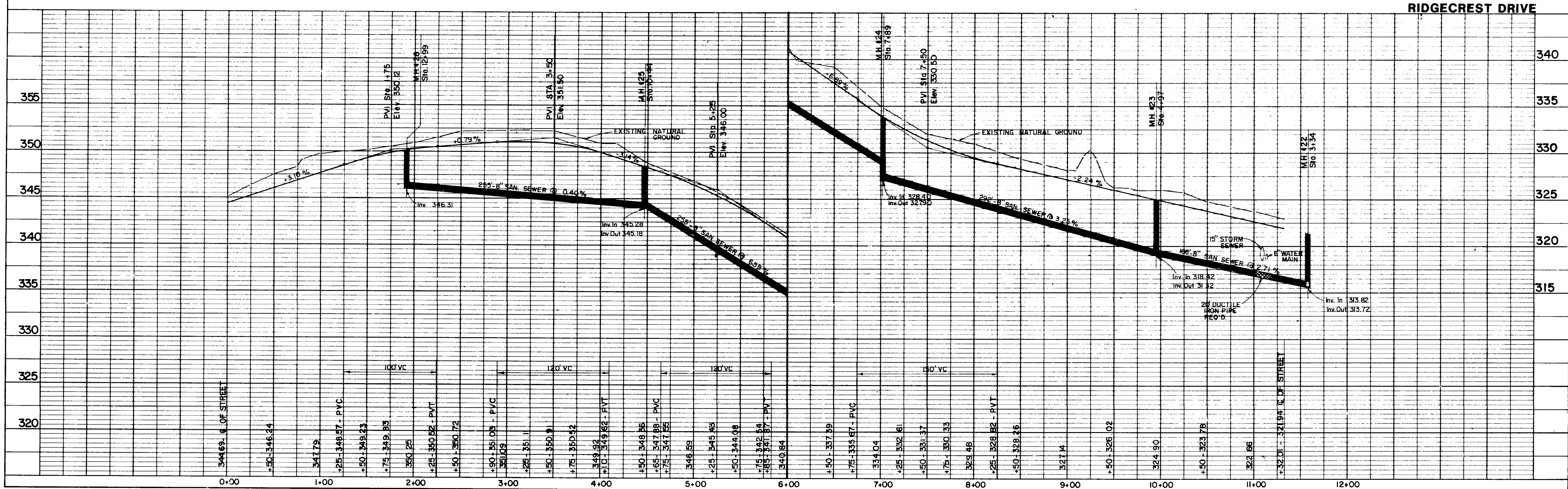
☉ CURVE DATA

Δ = 3°46'09"
 R = 238.37'
 L = 165.61'
 C = 163.49'
 T = 85.00'



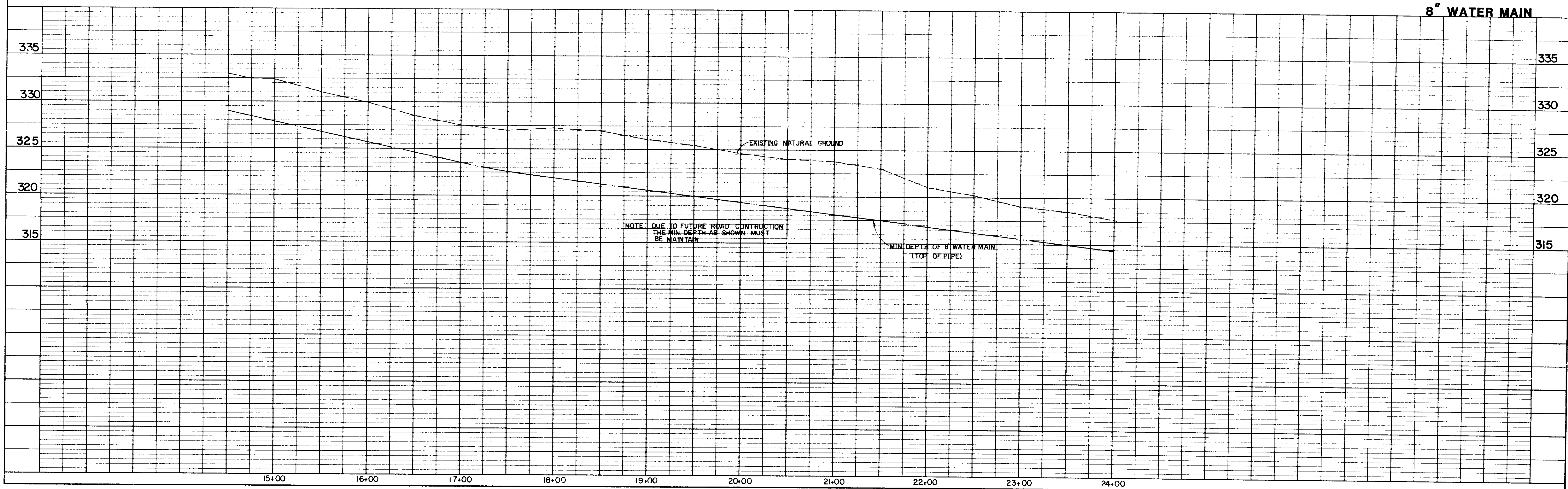
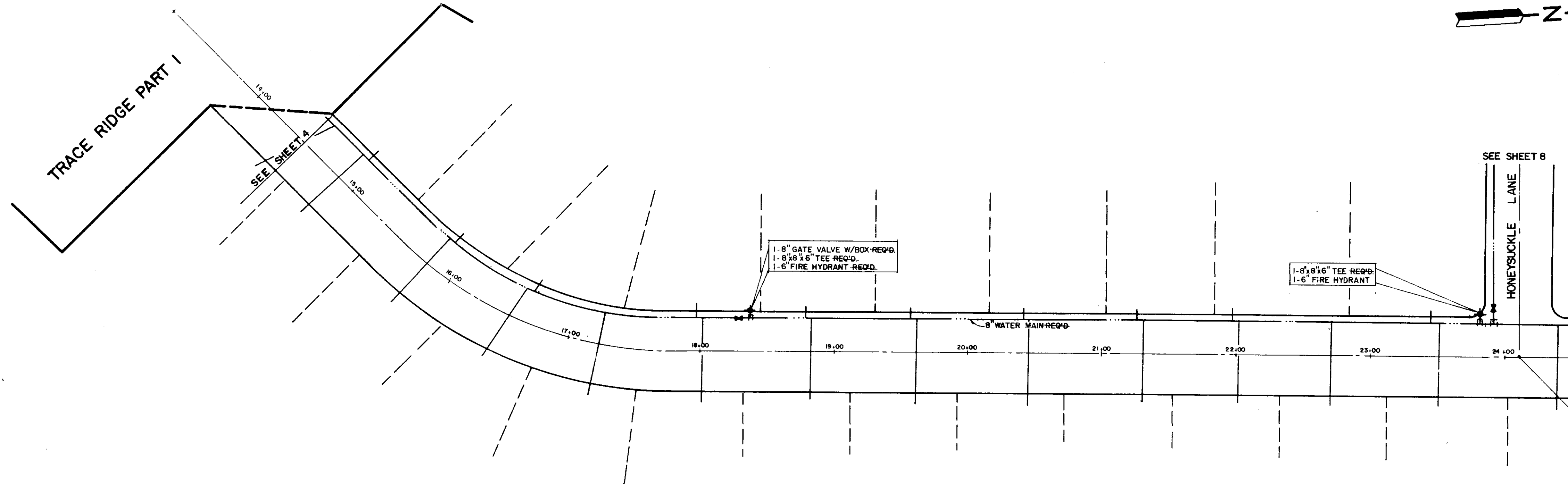
☉ CURVE DATA
 Δ = 33°00'29"
 R = 219.38'
 L = 126.36'
 C = 124.64'
 T = 65.00'

- NOTE: 1 THE PAY ITEM FOR DRAINING THE POND WILL BE INCLUDED IN ITEM NO. 100-1, CLEARING & GRUBBING
 2 THE PAY ITEM FOR POND UNDER CUT WILL BE INCLUDED IN ITEM NO. 200-3, EXCAVATION - STREET UNDERCUT.
 3 THE PAY ITEM FOR POND BACK FILL WILL BE INCLUDED IN ITEM NO. 200-4, EMBANKMENT.
 4 THE CONTRACTOR SHALL UNDERCUT THE POND OF ALL UNSTABLE MATERIAL TO A DEPTH AS DIRECTED BY THE ENGINEER. THE CONTRACTOR SHALL BACK FILL THE UNDERCUT AREA WITH SUITABLE MATERIAL, COMPACTED AT 6" LIFTS TO THE DESIRED ELEVATION.

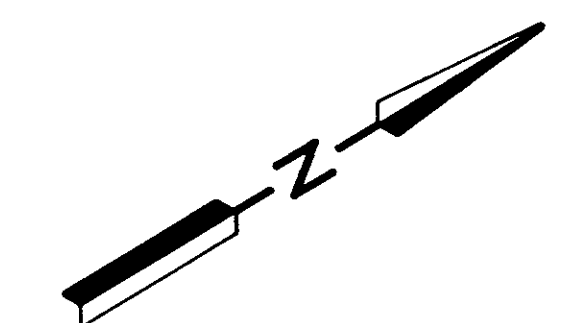
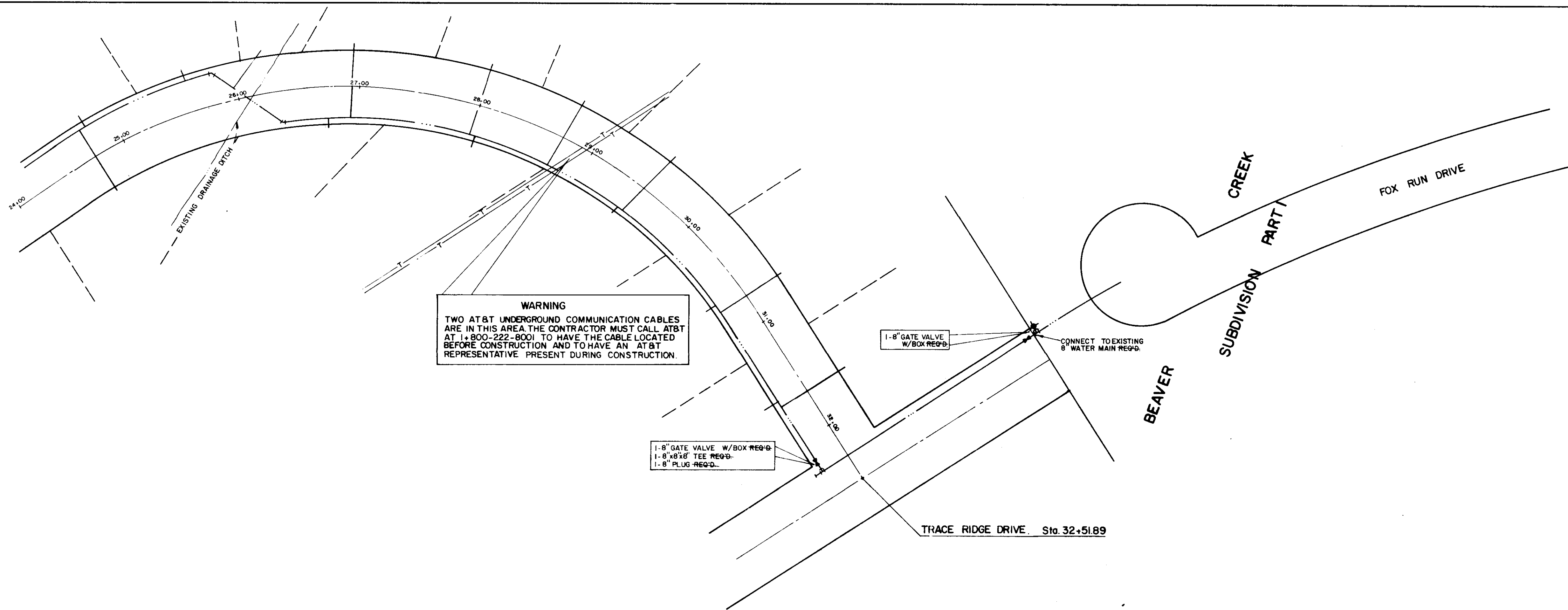


DATE	
BY	
CHECKED	
NO.	
DATE	
BY	
CHECKED	
NO.	
DATE	
BY	
CHECKED	
NO.	

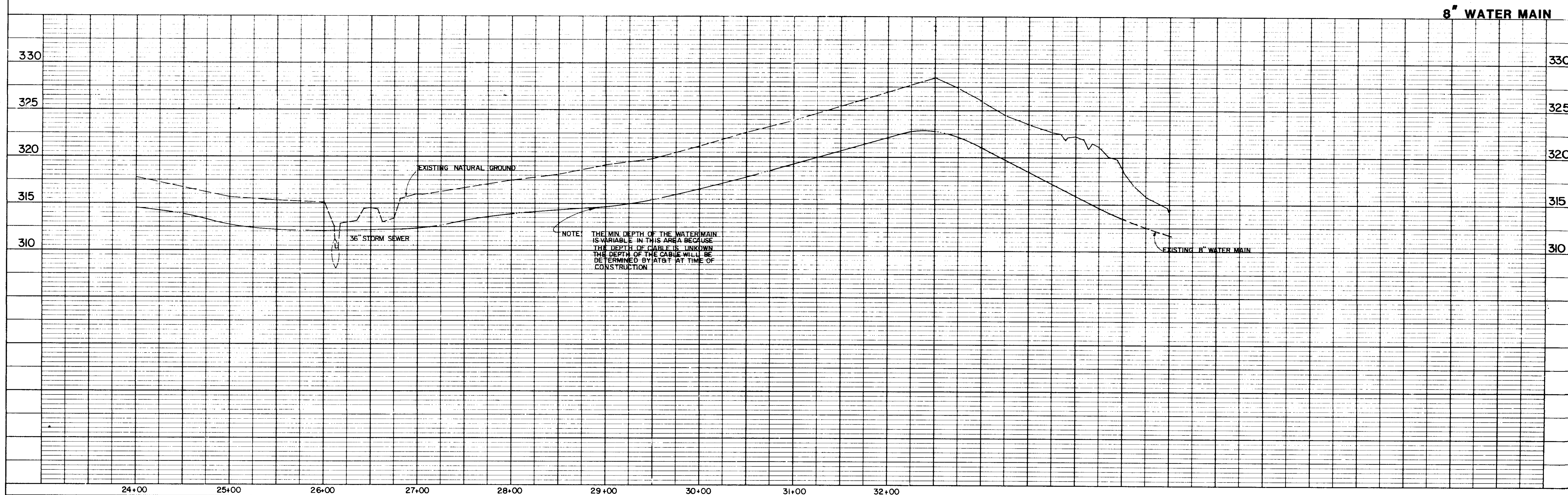
DATE	
BY	
CHECKED	
NO.	
DATE	
BY	
CHECKED	
NO.	
DATE	
BY	
CHECKED	
NO.	

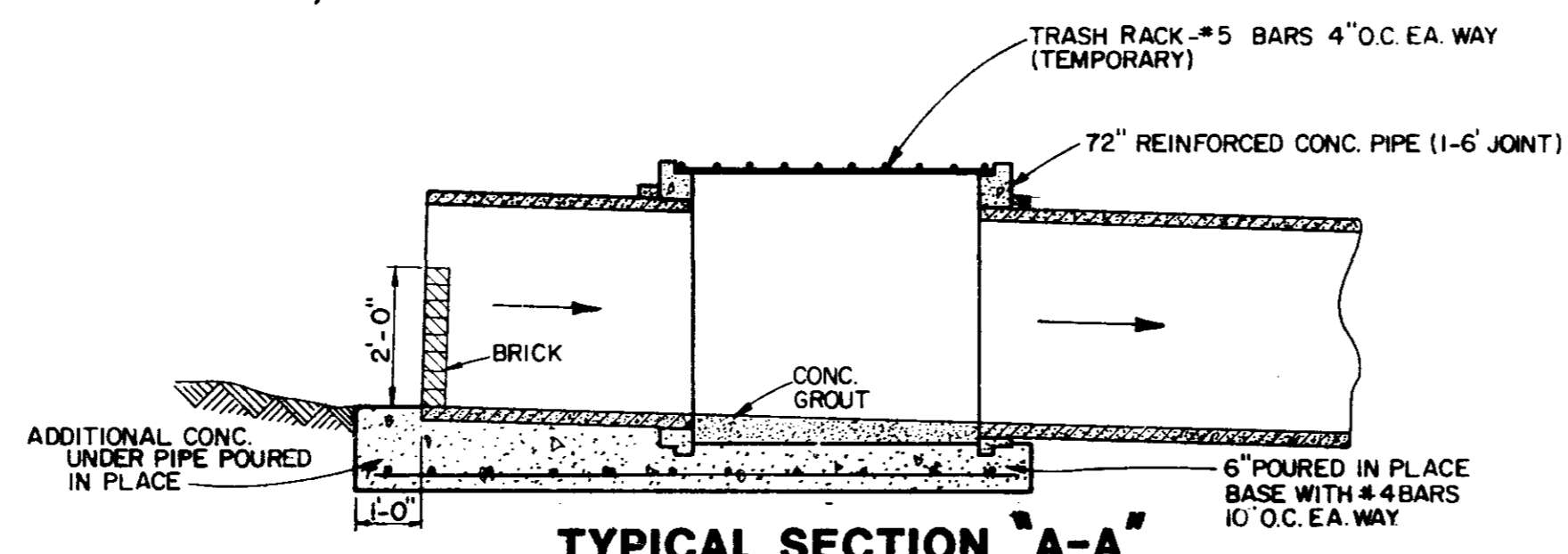
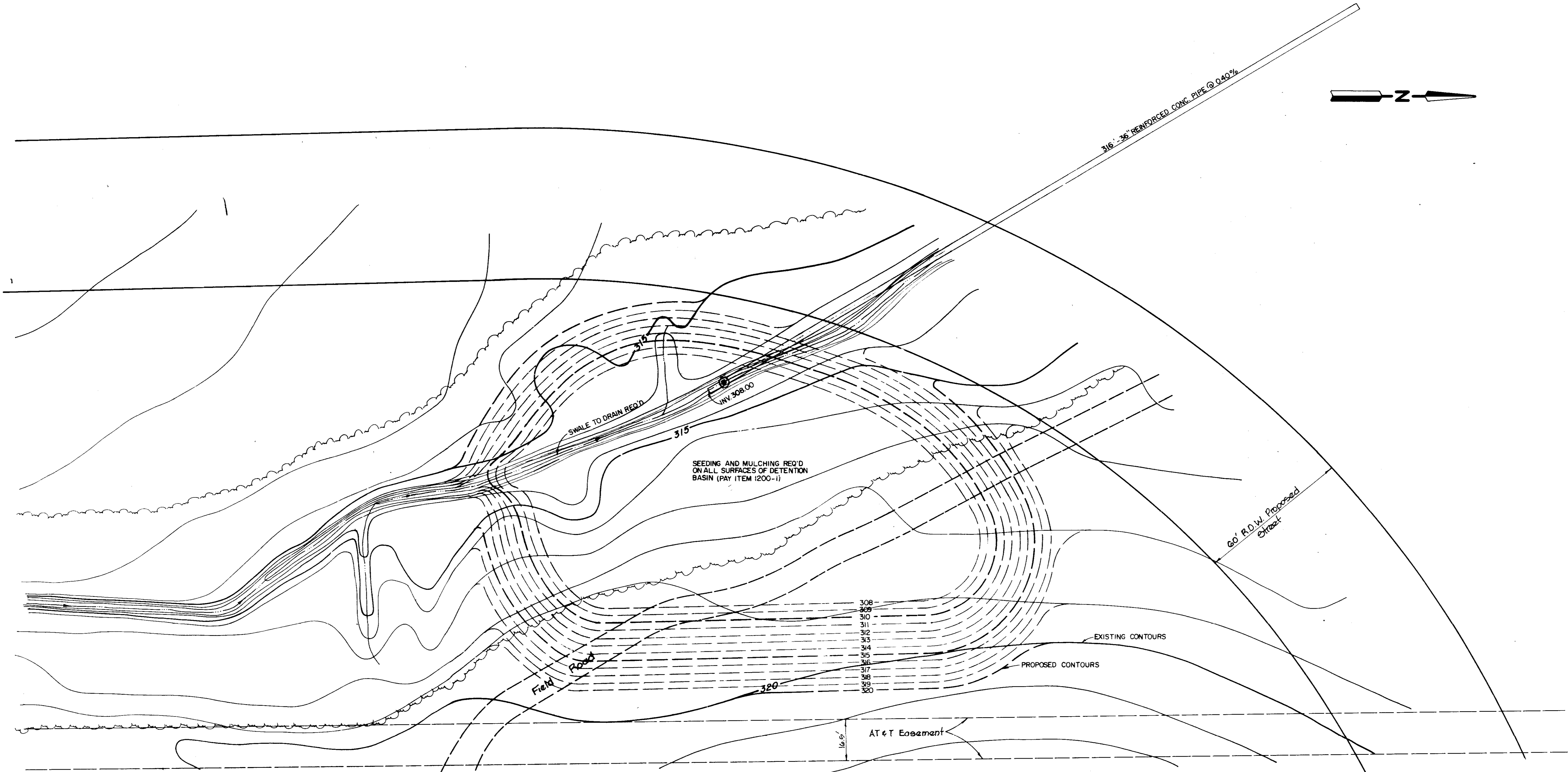


DATE	
BY	
DESIGNED	
PLOTTED	
ALIGNMENT CHECKED	
RT. OF WAY CHECKED	
NO.	
PLAN	
NOTE BOOK	
NO.	



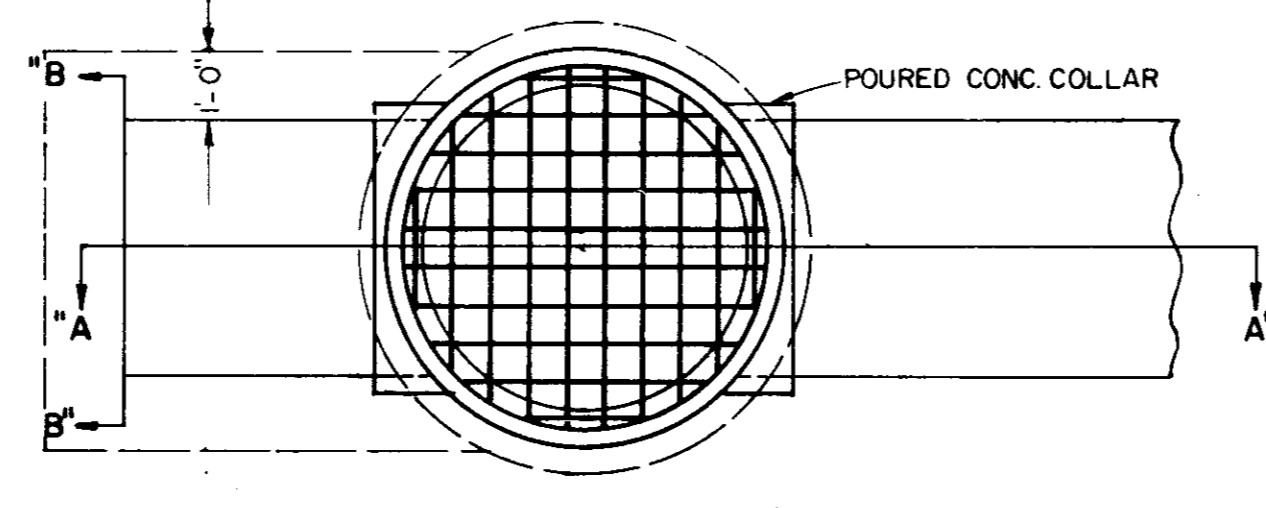
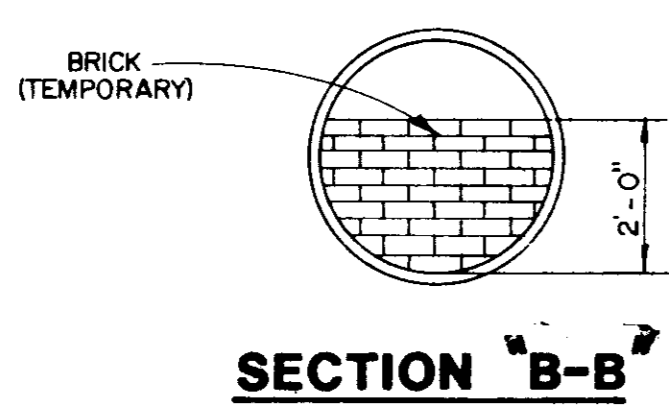
DATE	
BY	
DESIGNED	
PLOTTED	
GRADES CHECKED	
STRUCTURE NOTATIONS CHECKED	
NO.	
PROFILE	
NOTE BOOK	
NO.	





NOTE: 1. DURING CONSTRUCTION OF THE SUBDIVISION THE DETENTION BASIN IS TO BE USED ALSO AS A SEDIMENT POND. THE PARTLY BRICKED 36" PIPE AND THE TRASH RACK ARE TEMPORARY ONLY.
 2. THE CONTRACTOR IS RESPONSIBLE FOR REMOVAL OF SEDIMENT AS A RESULT OF HIS CONSTRUCTION.

SEE SHEET 3 FOR LOCATION OF DETENTION BASIN

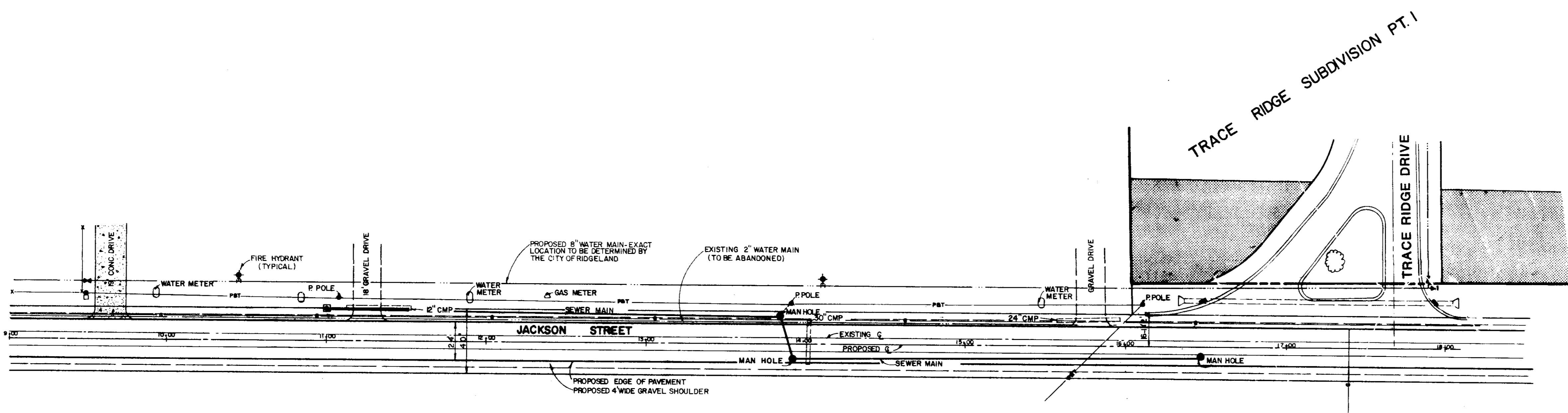
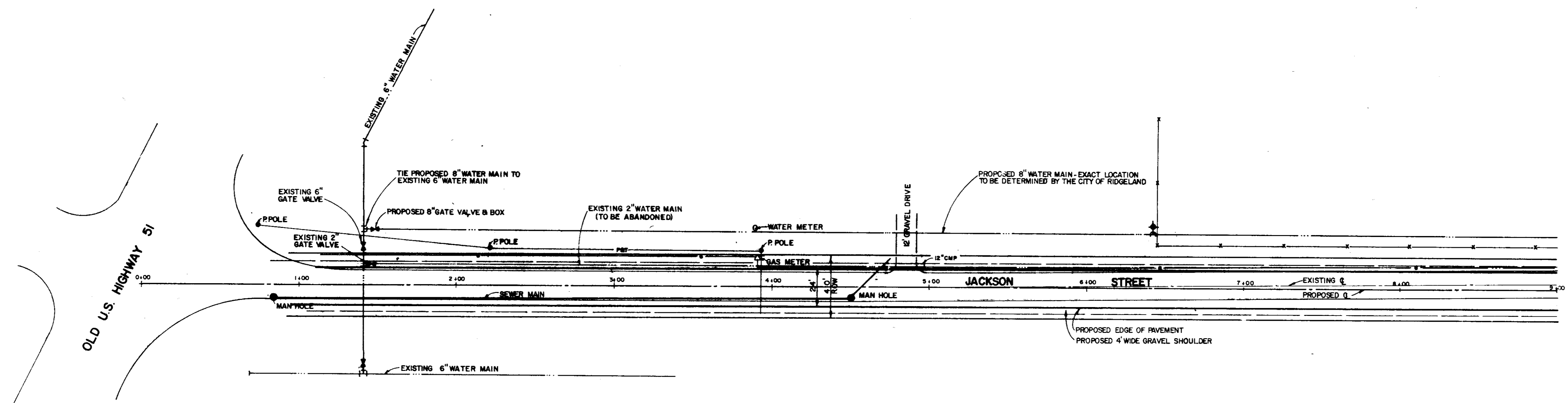


TYPICAL SECTION "A-A"

TOP VIEW OF JUNCTION BOX

Prepared by
Browning, Inc.
 CONSULTING ENGINEERS - SURVEYORS
 P. O. Box 13711
 1068 Ridgewood Place
 Jackson, Mississippi 39211

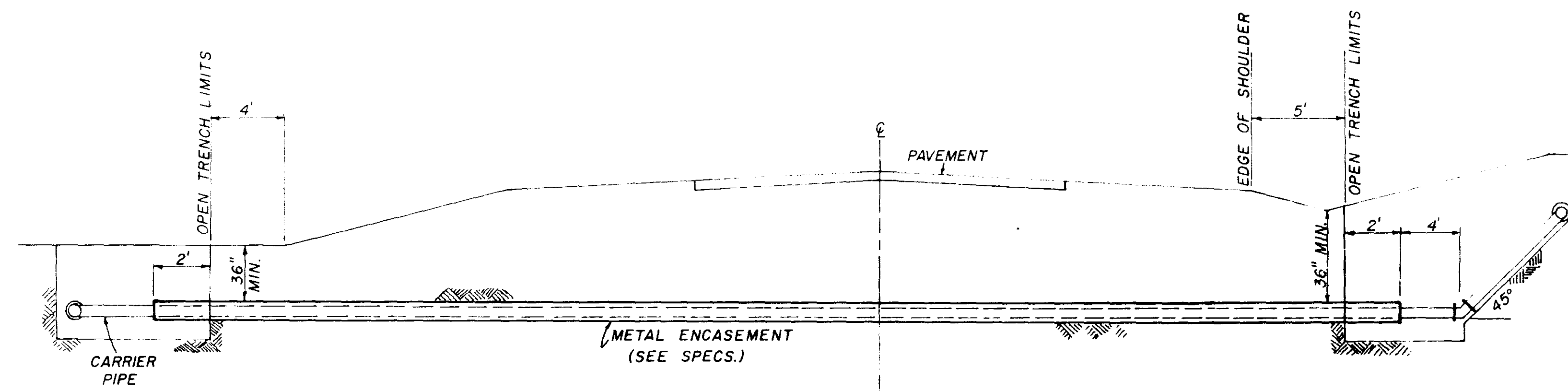
TRACE RIDGE SUBDIVISION
DETENTION BASIN
 MADISON COUNTY, MISSISSIPPI
 Scale: 1"=20' Date: July 21, 1986 Sheet 13 of 17



NOTE: AS OF THIS DATE THE 8" WATER MAIN HAS NOT BEEN BUILT, BUT IS UNDER CONTRACT TO BE BUILT. THE CONSTRUCTION OF THE WATER MAIN WILL BE COORDINATED WITH THE CITY OF RIDGELAND'S JACKSON STREET PROJECT.

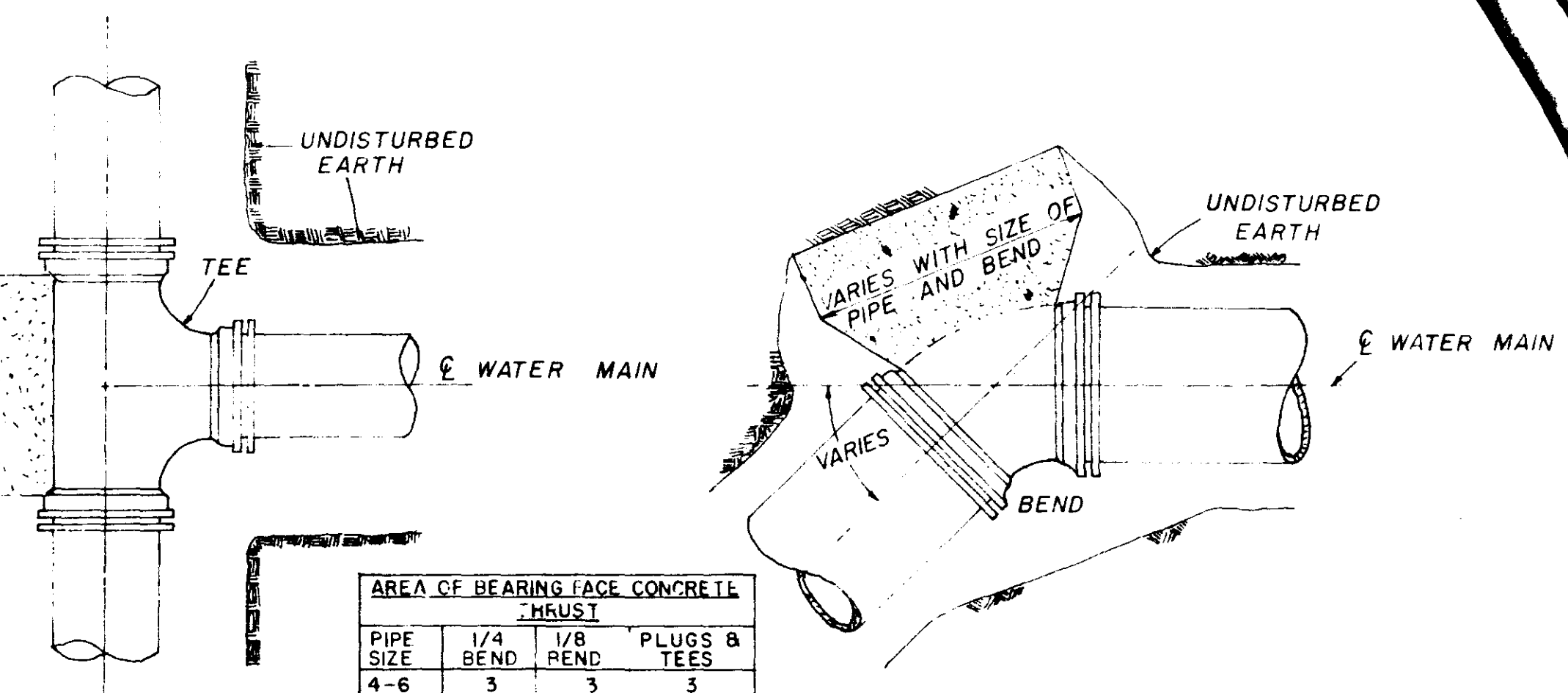
REVISION: 12-11-86 PROPOSED 8" WATER MAIN TIE-IN

TRACE RIDGE SUBDIVISION
8" WATER MAIN



TYPICAL CASSED CROSSING

NOTE: COMPENSATION FOR CONCRETE THRUST BLOCKS SHALL BE INCLUDED IN THE UNIT PRICE BID FOR VALVES, FIRE HYDRANTS AND FITTINGS.

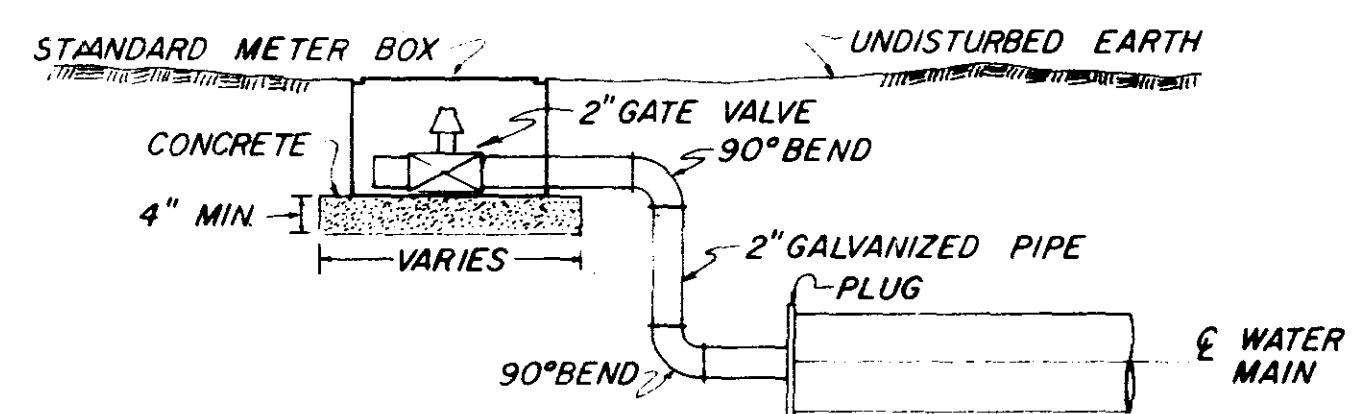


PLAN

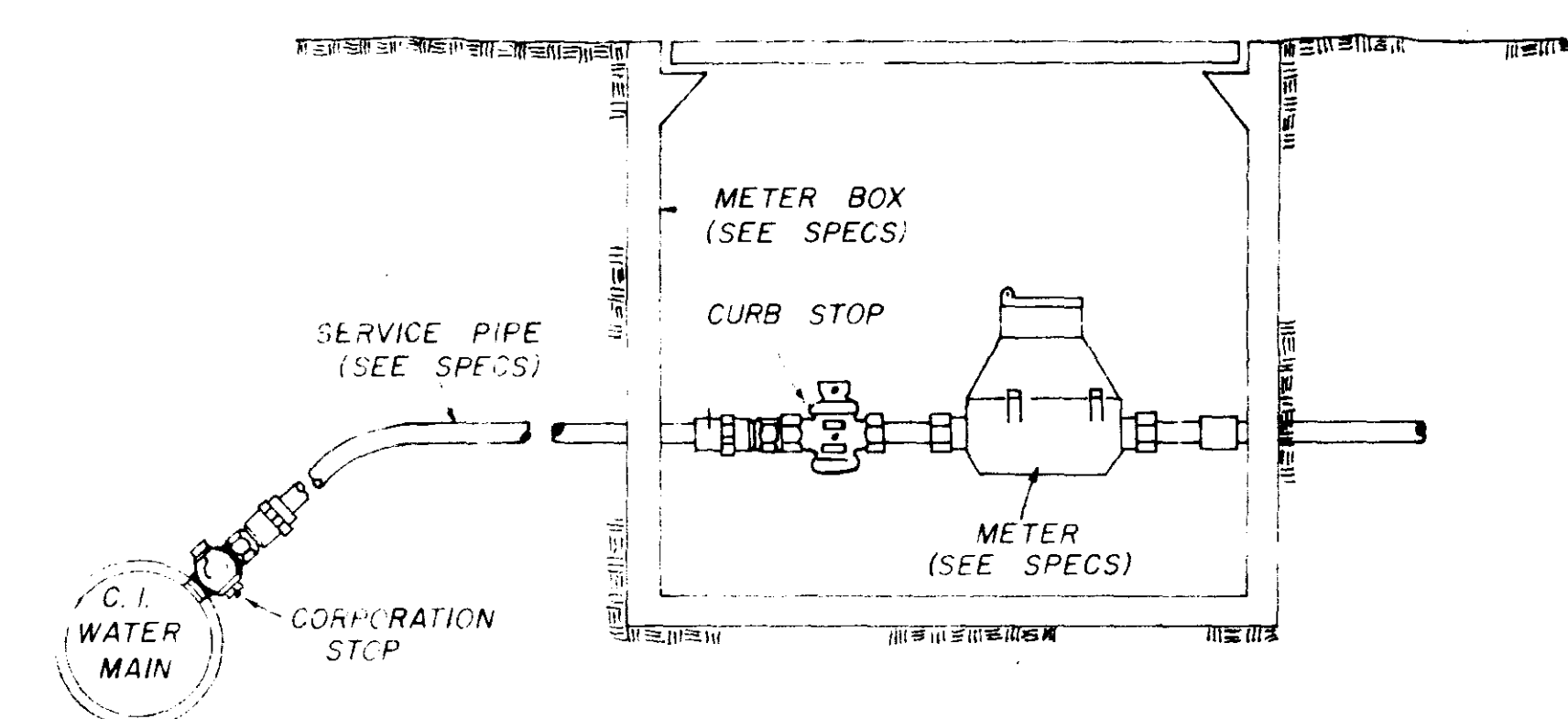
PLAN

PIPE SIZE	AREA OF BEARING FACE CONCRETE THRUST		PLUGS & TEES
	1/4 BEND	1/8 BEND	
4-6	3	3	3
8	3	3	3
10	4	3	4
12	6	3	4
16	11	4	7

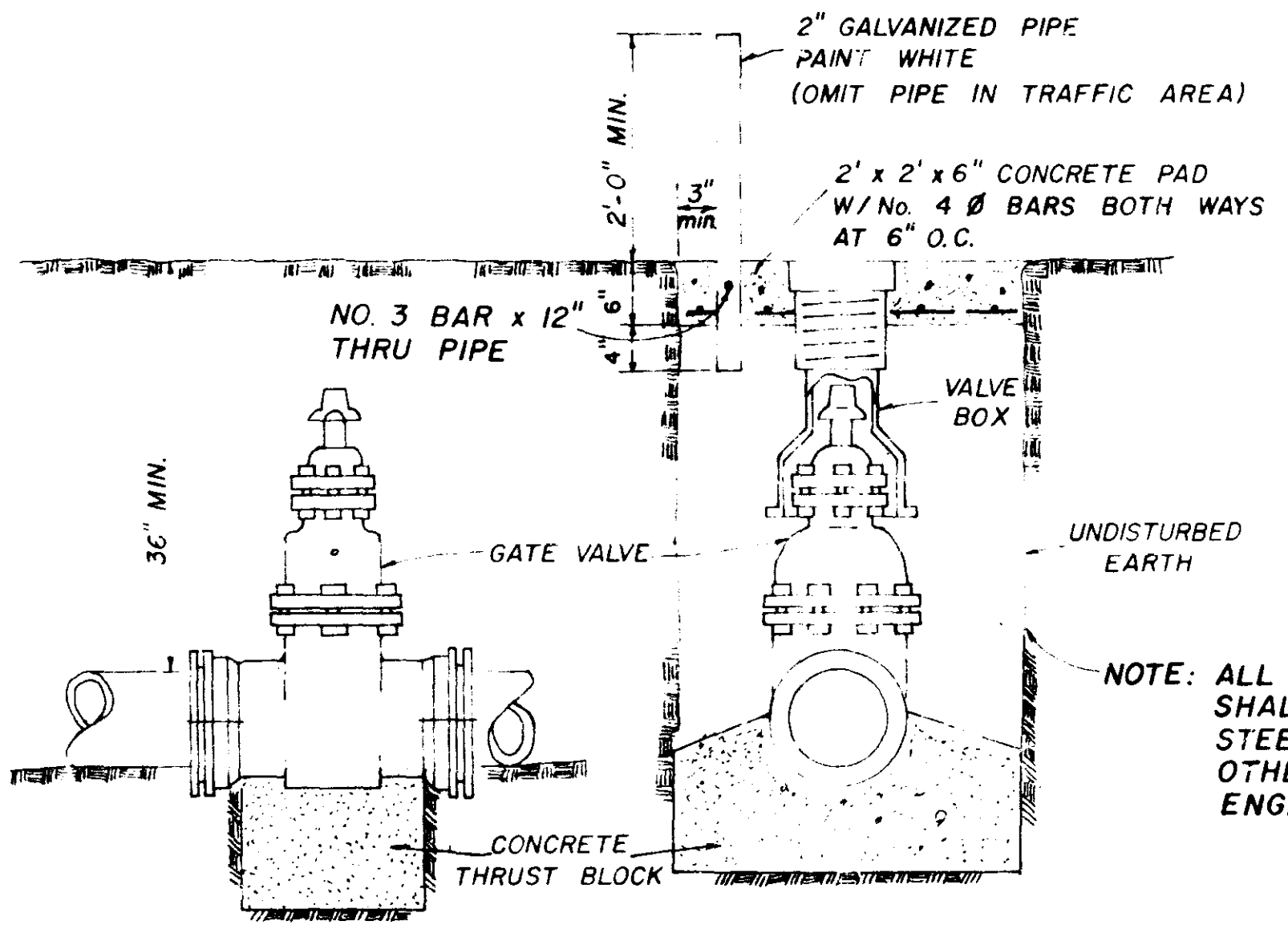
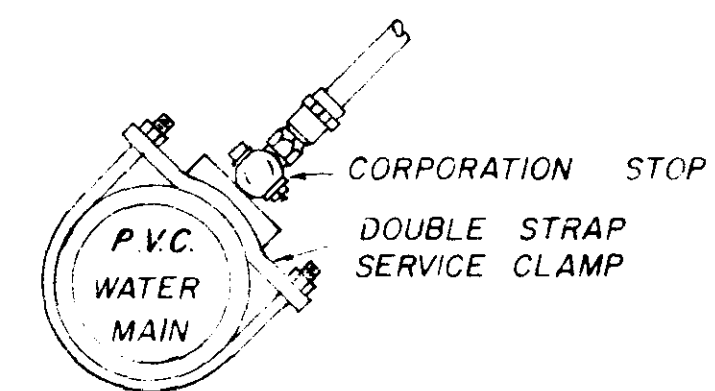
NOTE: AREA OF BEARING FACE IN SQUARE FEET.



TYPICAL 2" BLOW-OFF DETAIL



TYPICAL SERVICE ASSEMBLY

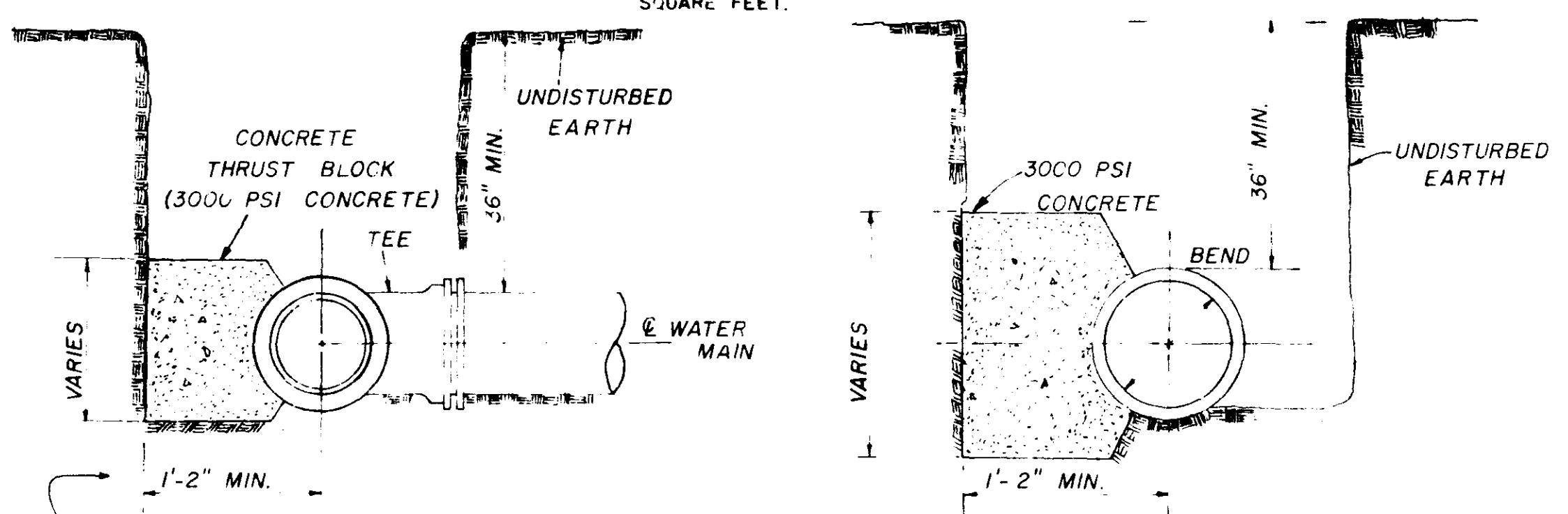


ELEVATION

SECTION

TYPICAL VALVE & BOX

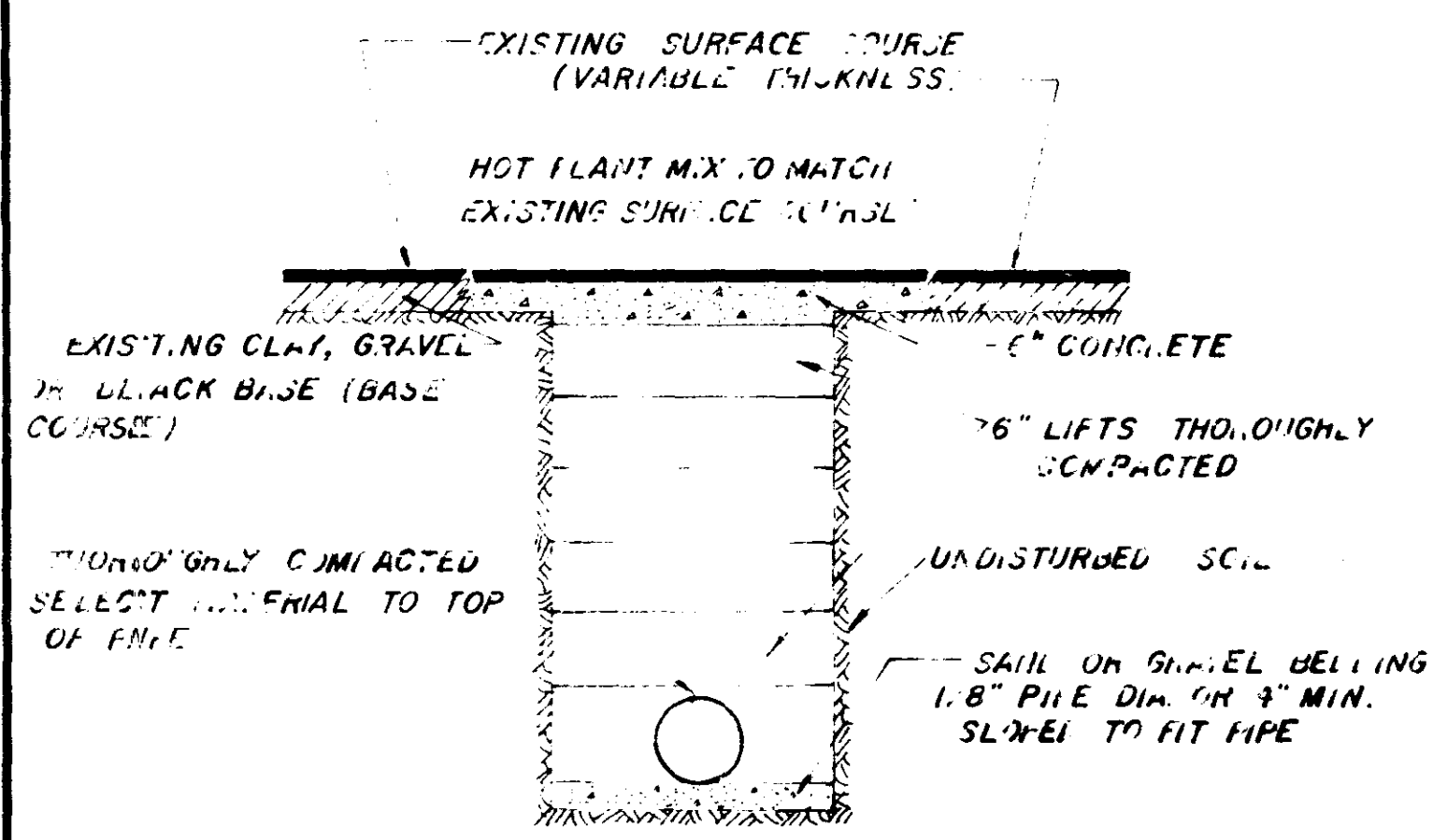
NOTE: ALL WATER MAIN CONNECTIONS SHALL BE RODDED WITH ALL STEEL RODS (3/4" MIN.) UNLESS OTHERWISE INSTRUCTED BY ENGINEER.



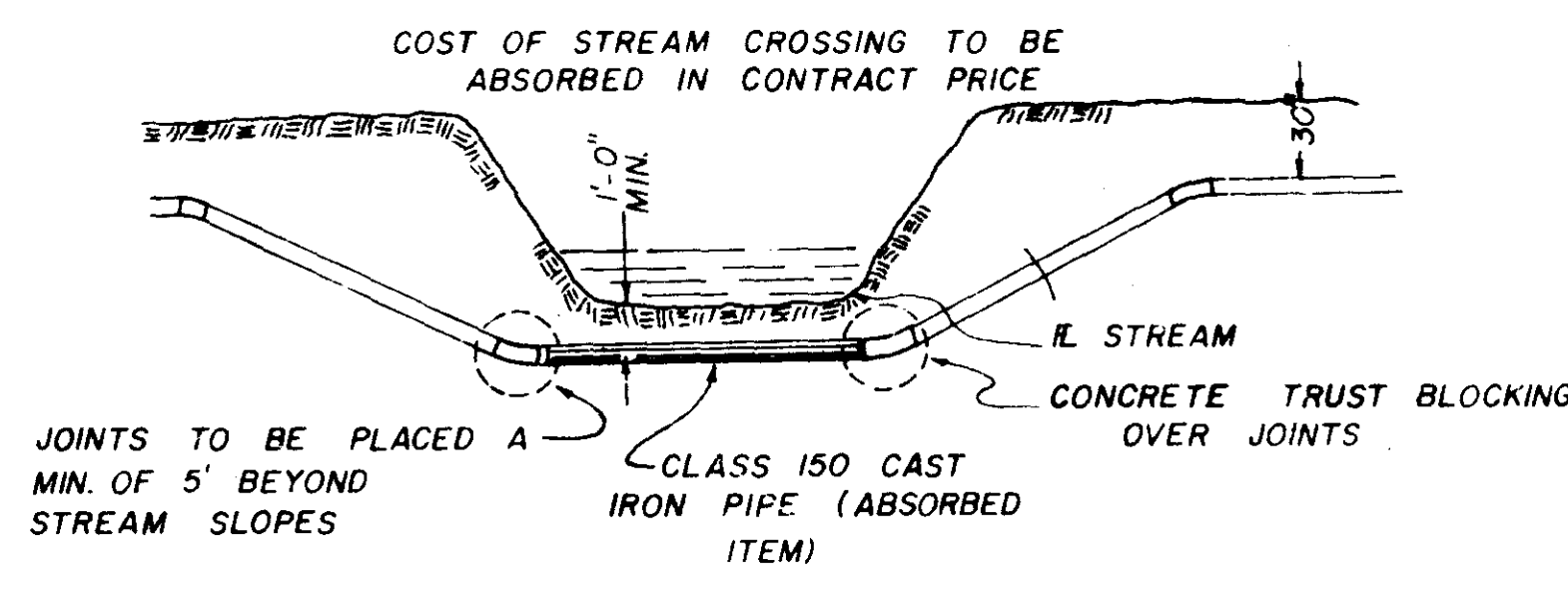
SECTION

SECTION

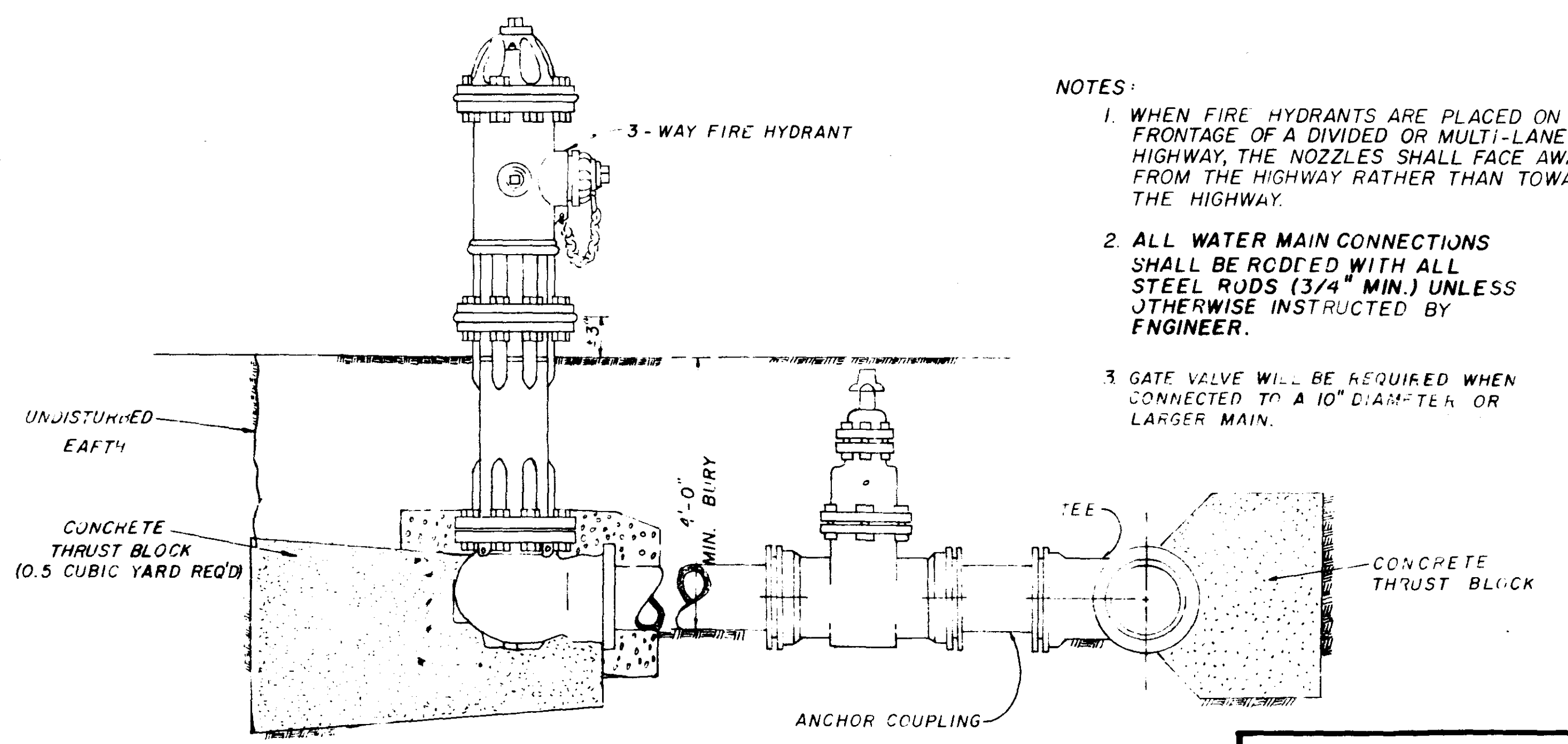
BLOCKING DETAILS FOR TEES & BENDS



STREET REPAIR OF OPEN CUT



TYPICAL STREAM CROSSING



TYPICAL FIRE HYDRANT

- NOTES:
1. WHEN FIRE HYDRANTS ARE PLACED ON THE FRONTAGE OF A DIVIDED OR MULTI-LANE HIGHWAY, THE NOZZLES SHALL FACE AWAY FROM THE HIGHWAY RATHER THAN TOWARD THE HIGHWAY.
 2. ALL WATER MAIN CONNECTIONS SHALL BE RODDED WITH ALL STEEL RODS (3/4" MIN.) UNLESS OTHERWISE INSTRUCTED BY ENGINEER.
 3. GATE VALVE WILL BE REQUIRED WHEN CONNECTED TO A 10" DIAMETER OR LARGER MAIN.

WATER SYSTEM STANDARD DETAILS

CITY OF RIDGELAND

DRAWN BY: H.J. DATE: JULY, 1988
 CHECKED BY: J.A.W. SCALE: N.T.S. 15 OF 17

