

CONTRACT DRAWINGS

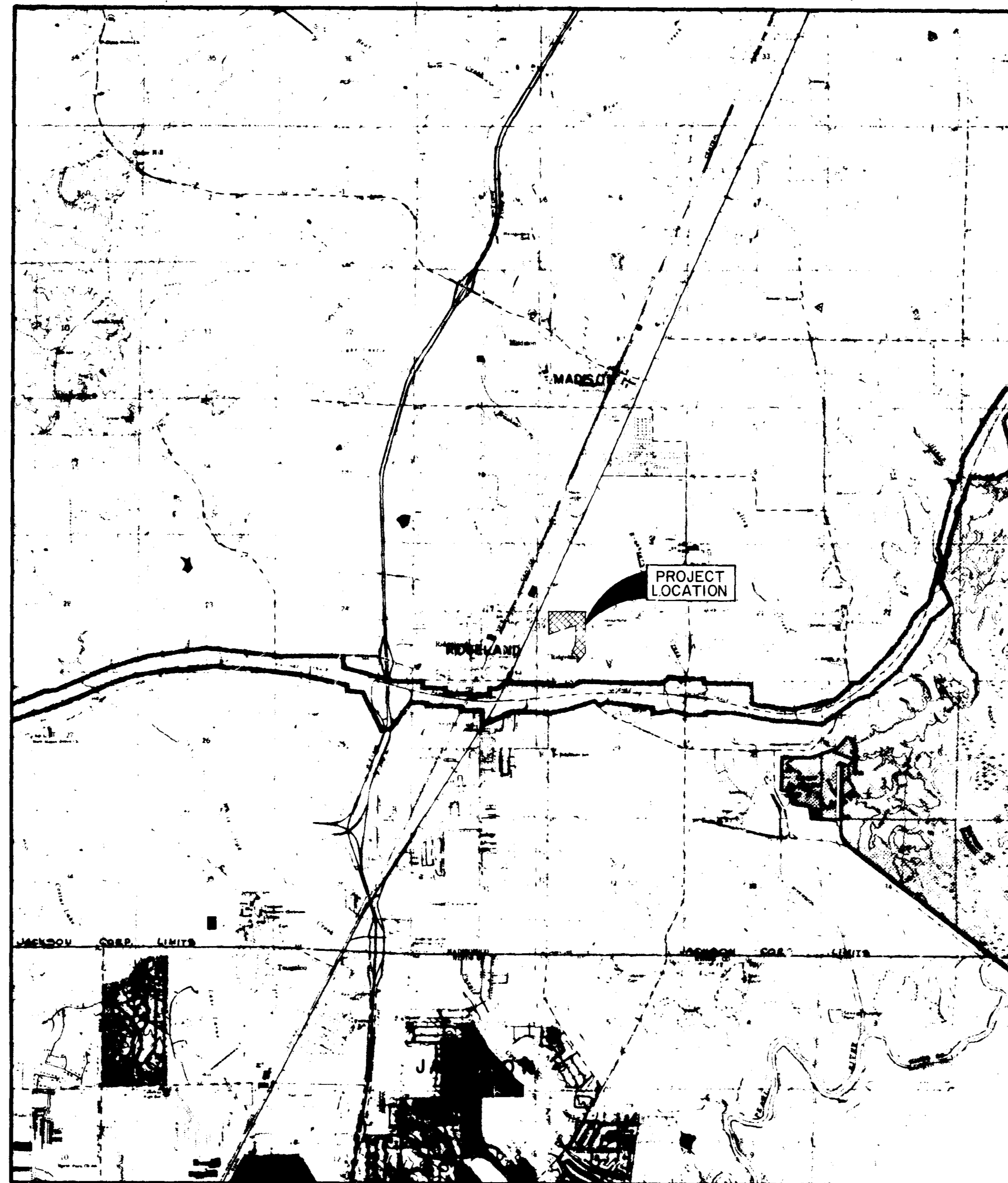
FOR

TRACE RIDGE SUBDIVISION PART 2

STREETS, DRAINAGE, SANITARY SEWER & WATER SYSTEM

ESTIMATED QUANTITIES

ITEM NO.	ITEM DESCRIPTION	ESTIMATED QUANTITY	UNIT
STREETS & DRAINAGE			
200-1	EXCAVATION-COMMON	7714	CY
200-2	EXCAVATION-STREET UNDERCUT	200	CY
200-3	EMBANKMENT	400	CY
400-1	4" BLACK BASE COURSE	6042	SY
400-2	6" BLACK BASE COURSE	4833	SY
400-3	1-1/2" BITUMINOUS SURFACE	10875	SY
500-1	CONCRETE CURB AND GUTTER	7350	LF
600-1	CURB INLET	20	EA
600-2	15" REINFORCED CONCRETE PIPE	844	LF
600-3	18" REINFORCED CONCRETE PIPE	692	LF
600-4	24" REINFORCED CONCRETE PIPE	142	LF
600-5	29"x18" REINFORCED CONCRETE PIPE	168	LF
600-6	STORM MANHOLE	1	EA
600-7	4'x4' BOX CULVERT	48	LF
600-8	8'x4' BOX CULVERT	48	LF
600-9	4'x4' WINGWALL WITH APRON	2	EA
600-10	8'x4' WINGWALL WITH APRON	2	EA
600-11	ROCK RIPRAP	2683	TON
WATER DISTRIBUTION SYSTEM			
900-1	CONN. TO EXIST. WATER MAIN	2	EA
900-2	8" PVC WATER MAIN, C-900, CLASS 150	1745	LF
900-3	6" PVC WATER MAIN, C-900, CLASS 150	260	LF
900-4	8"x6" REDUCER	1	EA
900-5	8"-45° BEND	2	EA
900-6	8"x8"x8" TEE	1	EA
900-7	8"x8"x8" TEE	5	EA
900-8	8" GATE VALVE WITH BOX	2	EA
900-9	6" GATE VALVE WITH BOX	1	EA
900-10	6" FIRE HYDRANT	4	EA
900-11	8" PLUG WITH 2" BLOW-OFF	1	EA
900-12	6" PLUG WITH 2" BLOW-OFF	1	EA
900-13	SERVICE ASSEMBLY	63	EA
900-14	3/4" SERVICE LINE	2755	LF
900-15	SERVICE MARKER	63	EA
SANITARY SEWER SYSTEM			
1000-1	CONN. TO EXIST. MANHOLE	4	EA
1000-2	8" GRAVITY SEWER PIPE (0'-8')	2357	LF
1000-3	8" GRAVITY SEWER PIPE (8'-12')	625	LF
1000-4	8" GRAVITY SEWER PIPE (12'-16')	326	LF
1000-5	10" GRAVITY SEWER PIPE (0'-8')	204	LF
1000-6	10" DUCTILE IRON PIPE (0'-8')	66	LF
1000-7	48" STANDARD MANHOLE (0'-8')	12	EA
1000-8	48" STANDARD MANHOLE (8'-12')	3	EA
1000-9	48" STANDARD MANHOLE (12'-16')	1	EA
1000-10	UNDERCUT & SELECT BACKFILL	100	CY
1000-11	6" SANITARY SEWER SERVICE	2205	LF
1000-12	8" SERVICE TEE	46	EA
1000-13	SERVICE MARKER	63	EA
GRASS PLANTING			
1100-1	SEEDING	2.0	AC



VICINITY MAP

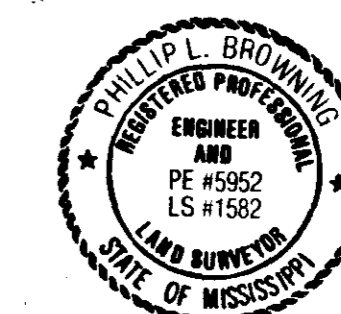
INDEX TO DRAWINGS

SHEET NO.	DESCRIPTION
1	COVER SHEET
2	GENERAL LAYOUT
3	DRAINAGE LAYOUT
4-8	PLAN-PROFILE SHEETS
9	WATER DETAILS
10	SEWER DETAILS
11	DRAINAGE DETAILS

"AS BUILT"
SEPT., 1988

I hereby certify that a final field survey was conducted and that these "as built" plans resulted from said survey and are true and correct to the best of my knowledge. I further certify that each improvement has been constructed in accordance with City Specifications.

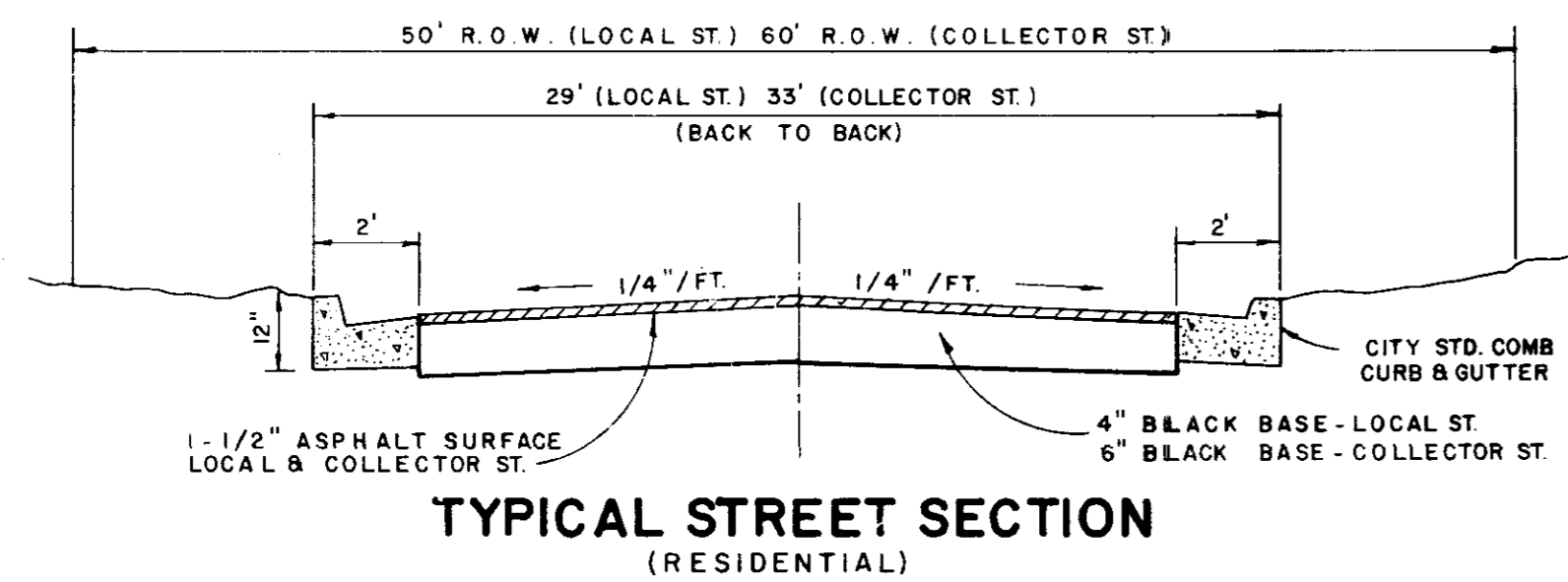
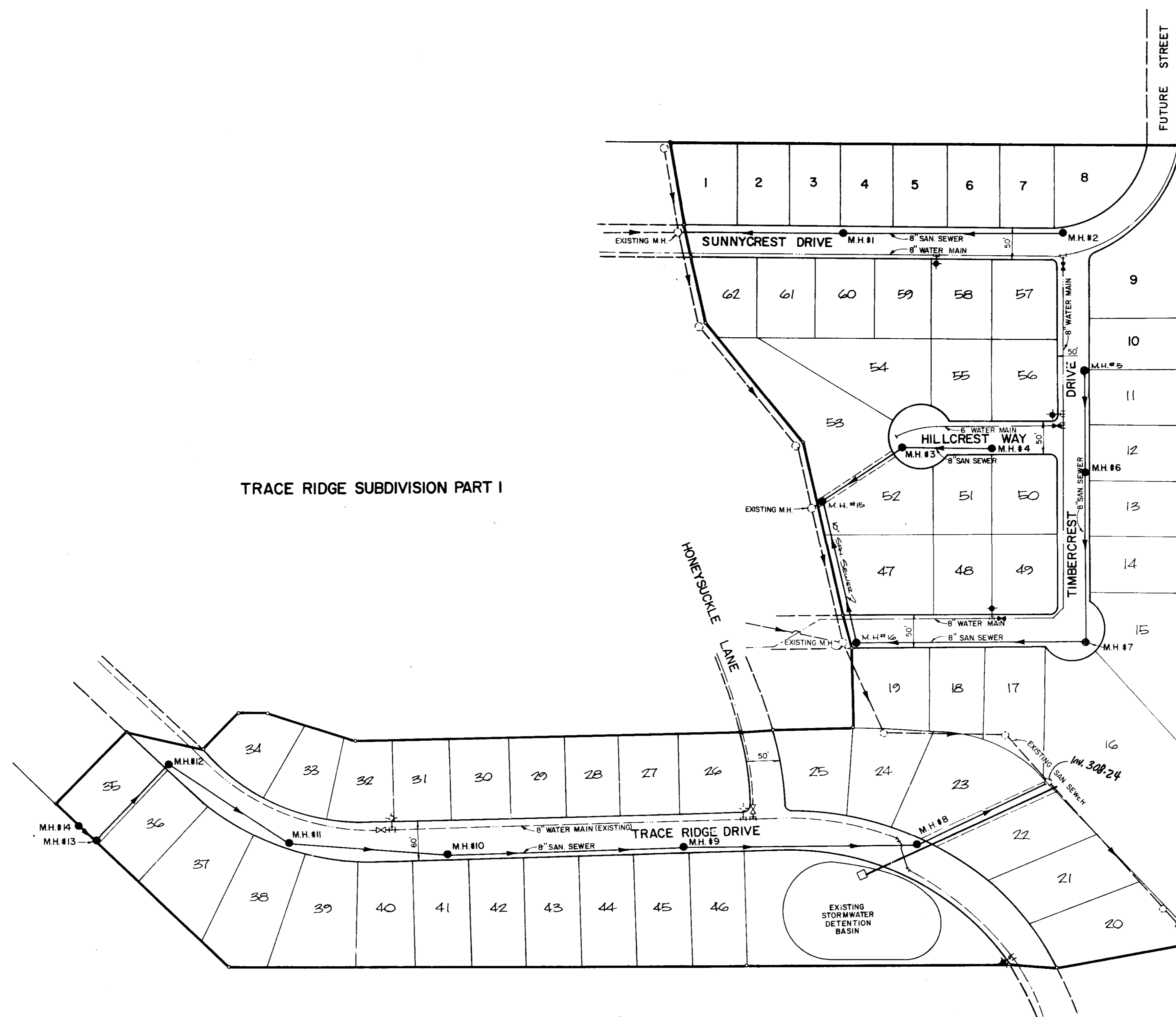
Philip L. Browning
Philip L. Browning, P. E. No. 5952



Prepared By:
Browning, Inc.
CONSULTING ENGINEERS - SURVEYORS
P. O. Box 12711
1068 Piedmont Plaza
JACKSON, MISSISSIPPI 39208-2711

PWP-02004

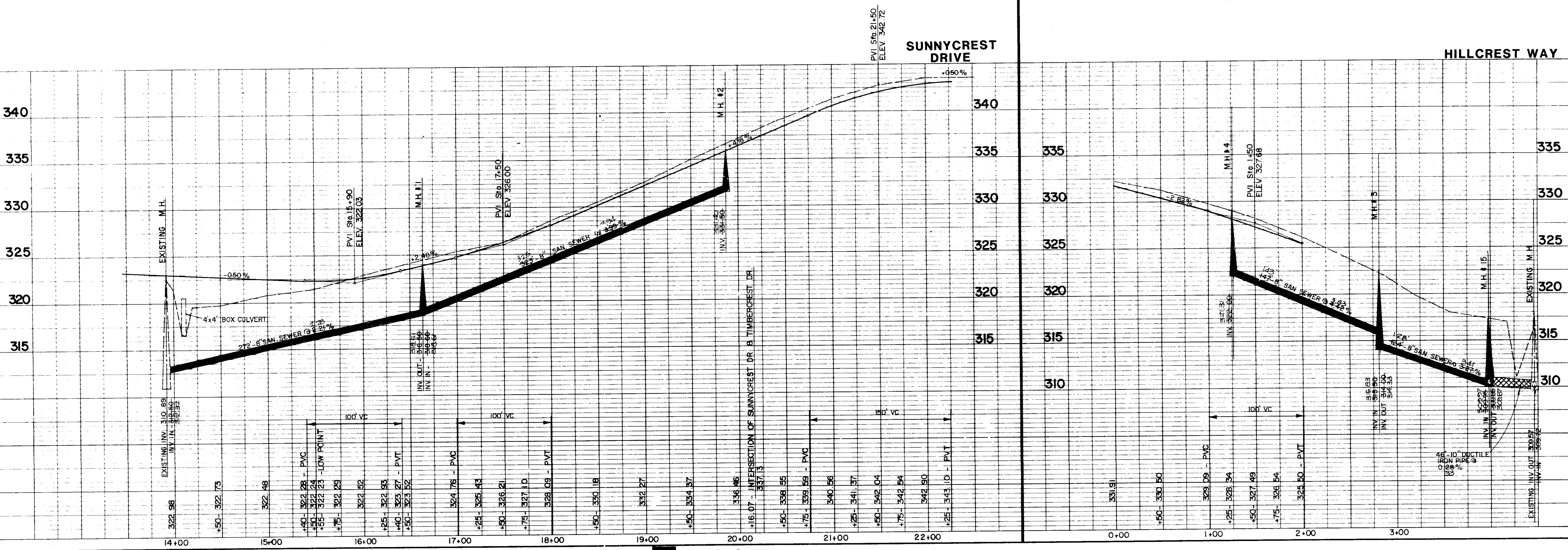
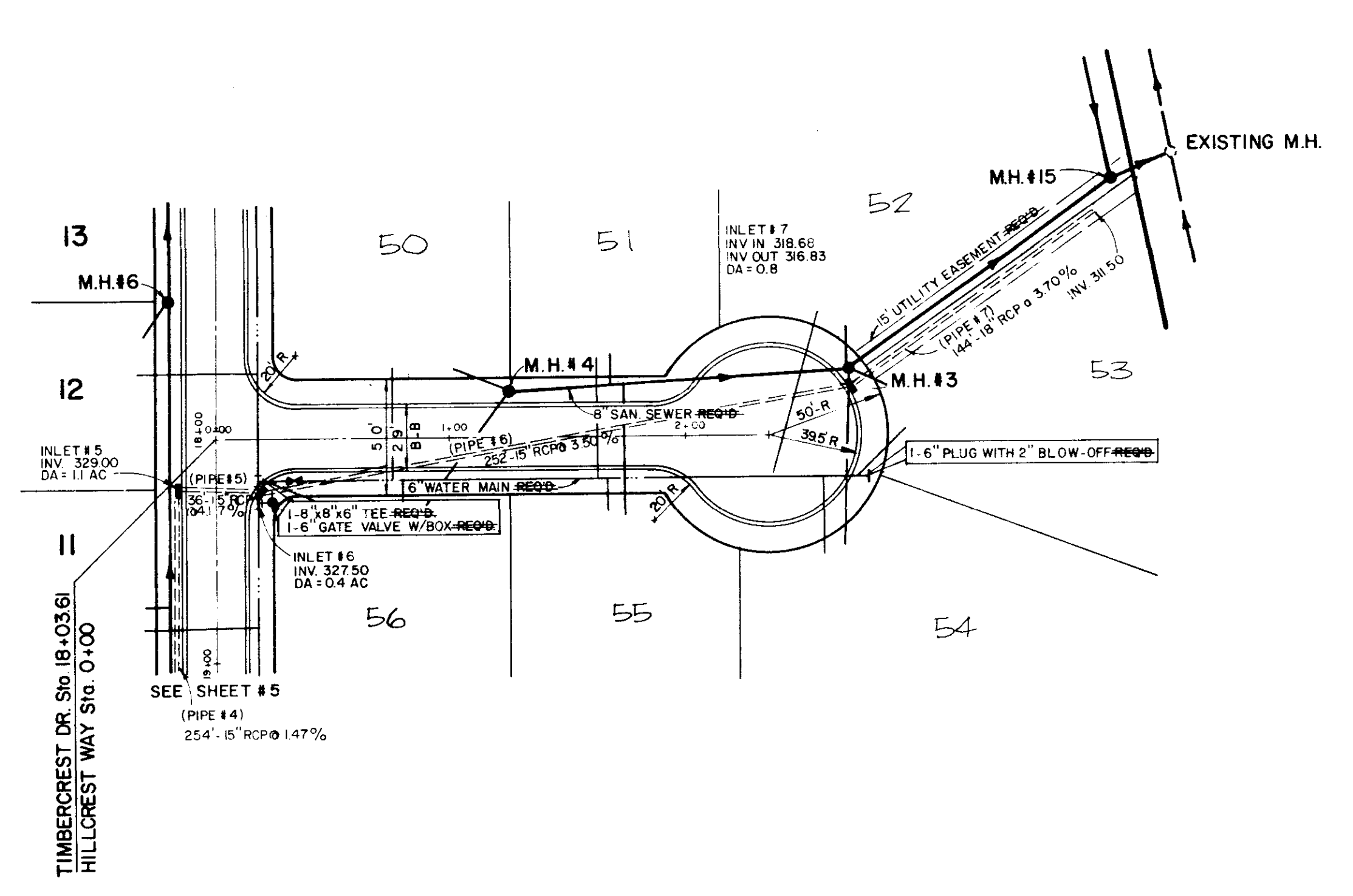
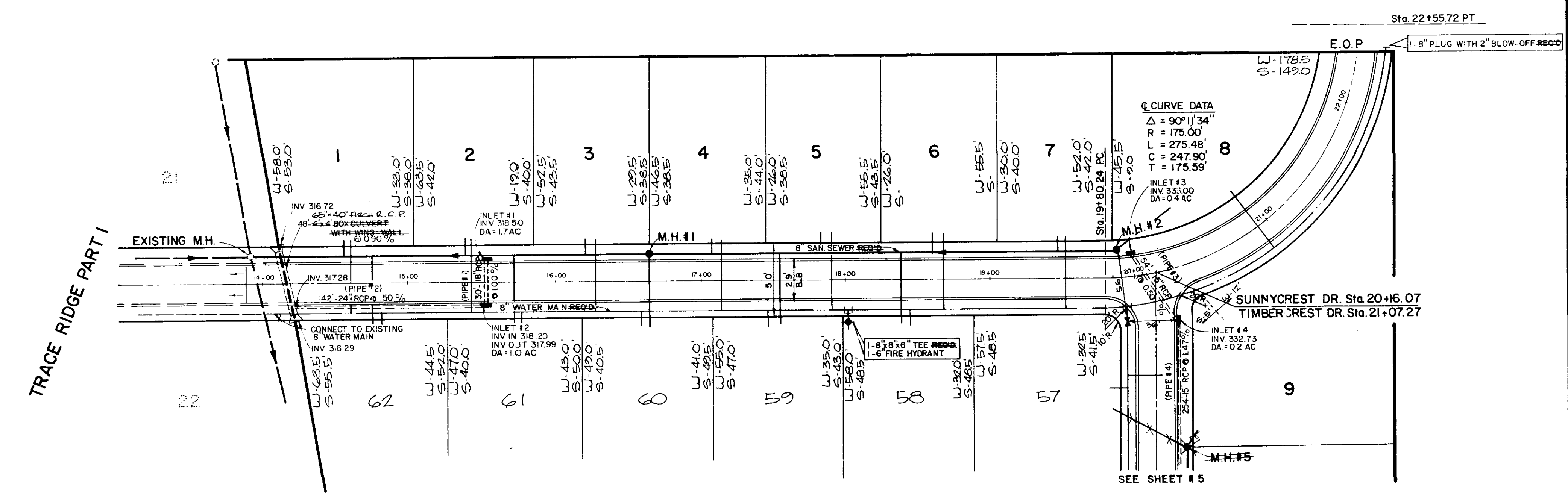
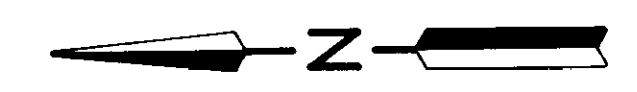
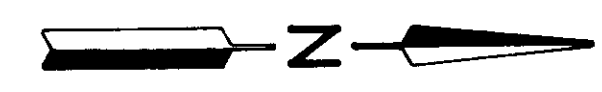
TRACE RIDGE SUBDIVISION PART I



TRACE RIDGE SUBDIVISION PART 2			
GENERAL LAYOUT			
BROWNING INC. Consulting Engineers Jackson, Mississippi			
Designed By: PLB	Scale: 1"=100'	Sheet 2 of 11	
Drawn By: J.F.	Date: MARCH, 1998		

PLAN
 SHEET NO. 4
 DATE: 10/1/11
 NOTE BOOK: 11/11/11
 DRAWN BY: J. H. HARRIS
 CHECKED BY: J. H. HARRIS

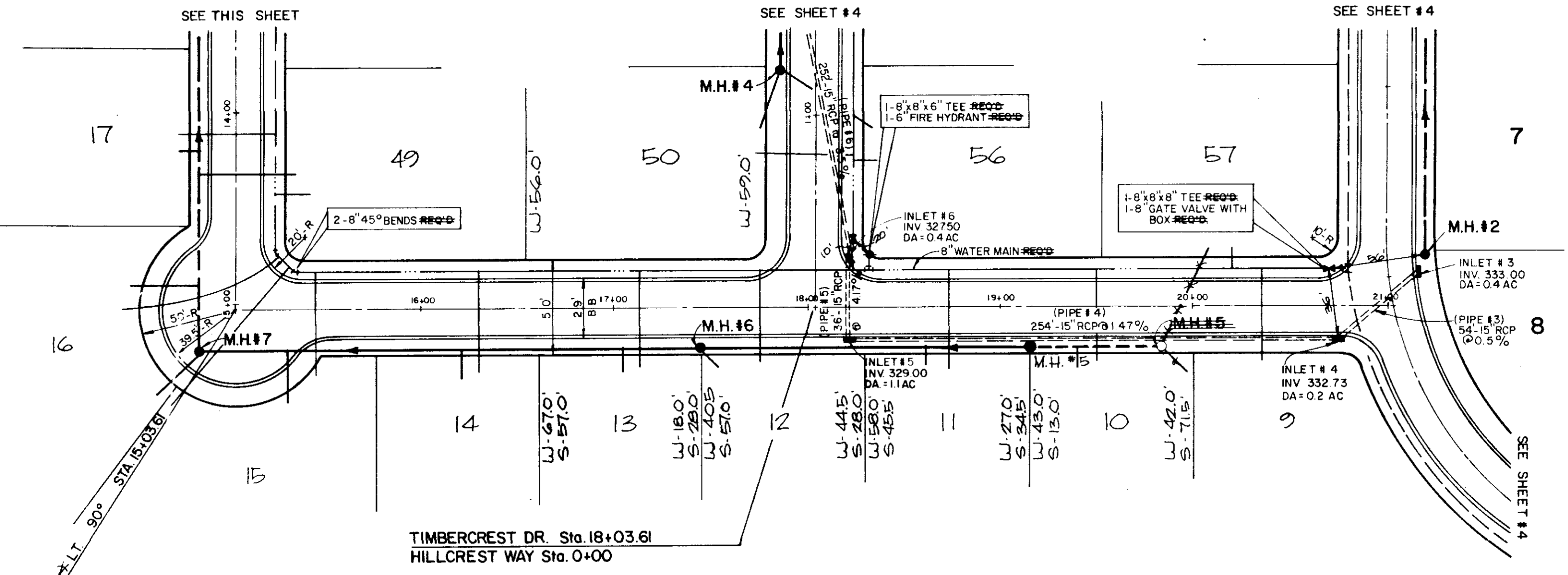
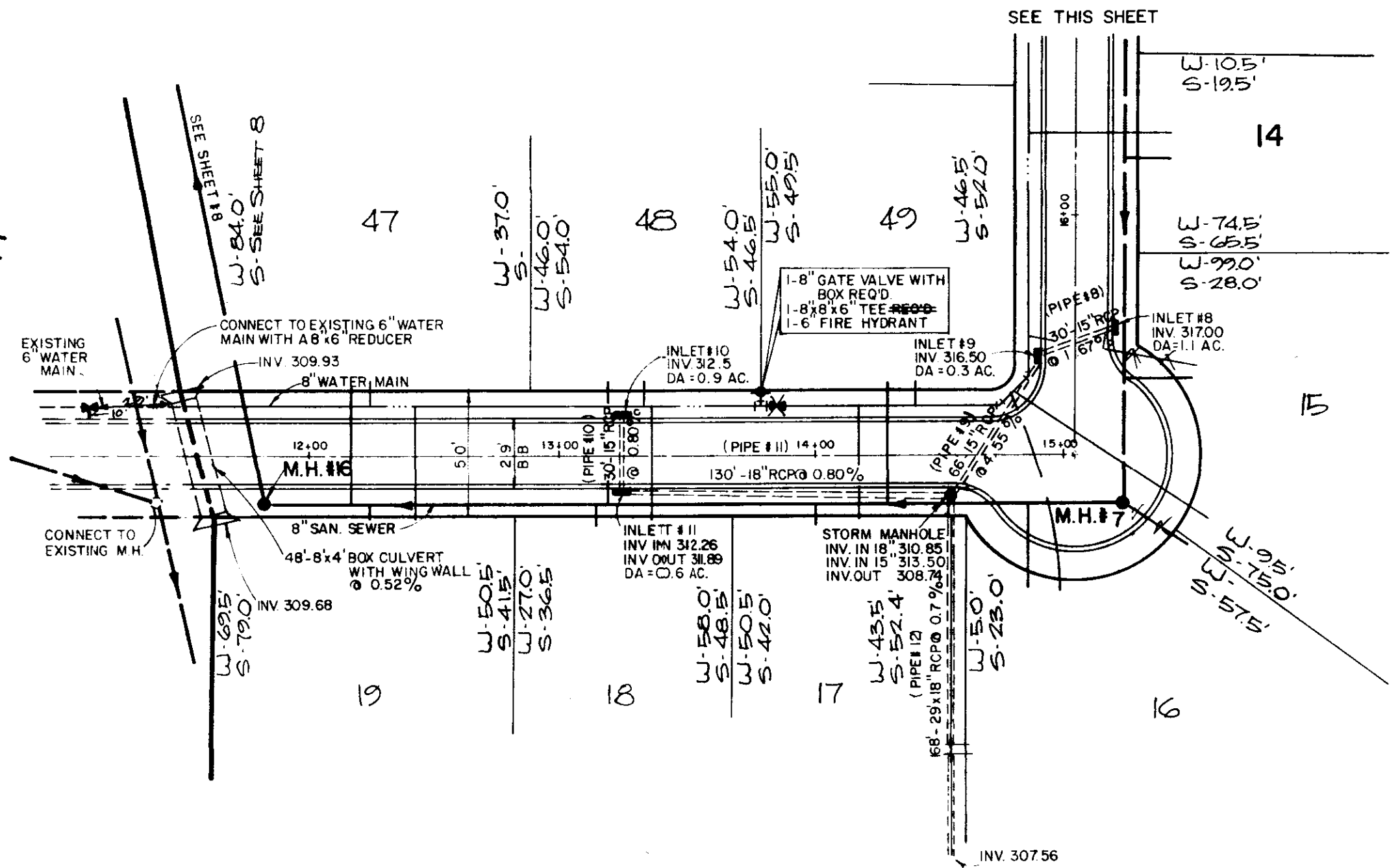
PROFILE
 SHEET NO. 4
 DATE: 10/1/11
 NOTE BOOK: 11/11/11
 DRAWN BY: J. H. HARRIS
 CHECKED BY: J. H. HARRIS



PLAN
 DATE: _____
 SHEET NO.: _____
 NOTE BOOK: _____
 ALIGNED: _____
 CHECKED: _____
 BY: _____

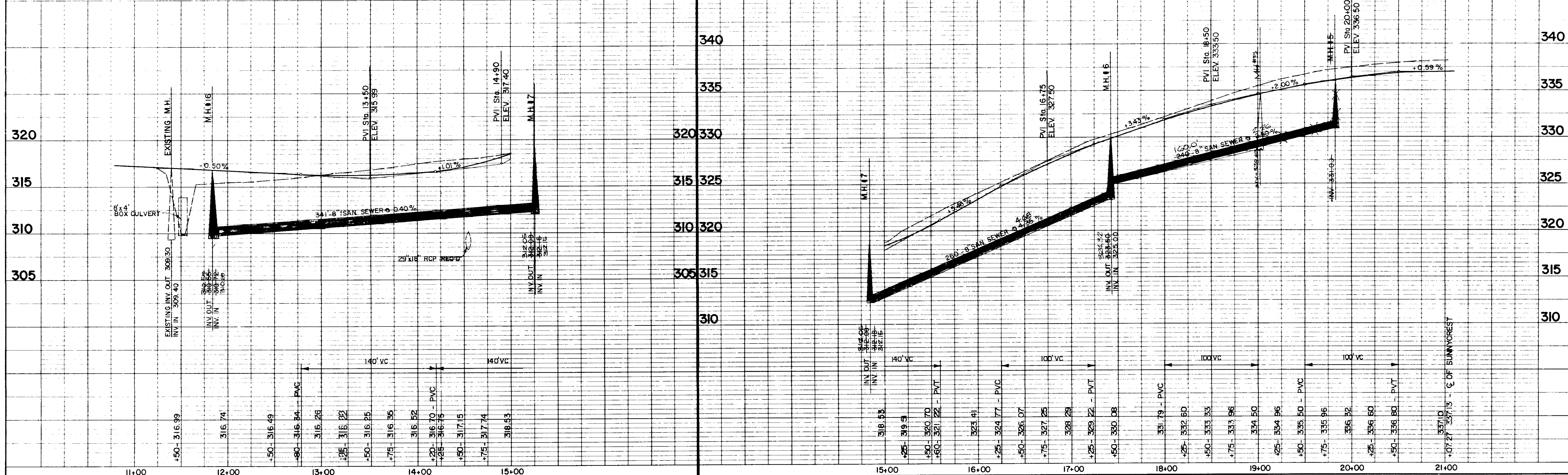
PROFILE
 DATE: _____
 SHEET NO.: _____
 NOTE BOOK: _____
 ALIGNED: _____
 CHECKED: _____
 BY: _____

TRACE RIDGE SUBDIVISION PART I



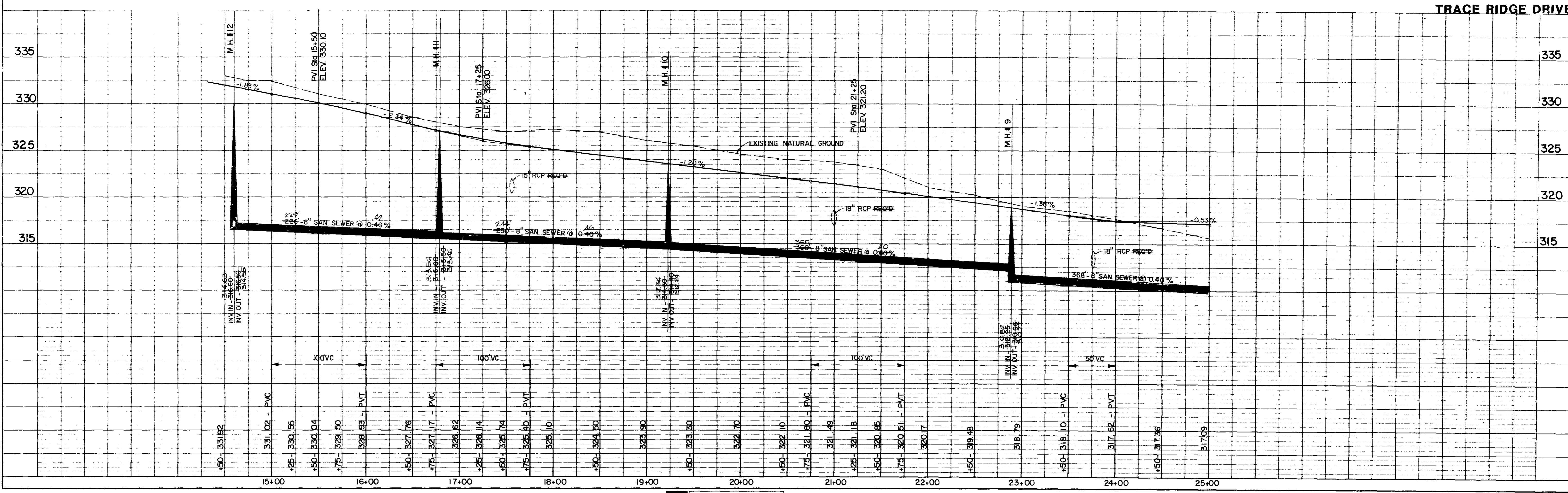
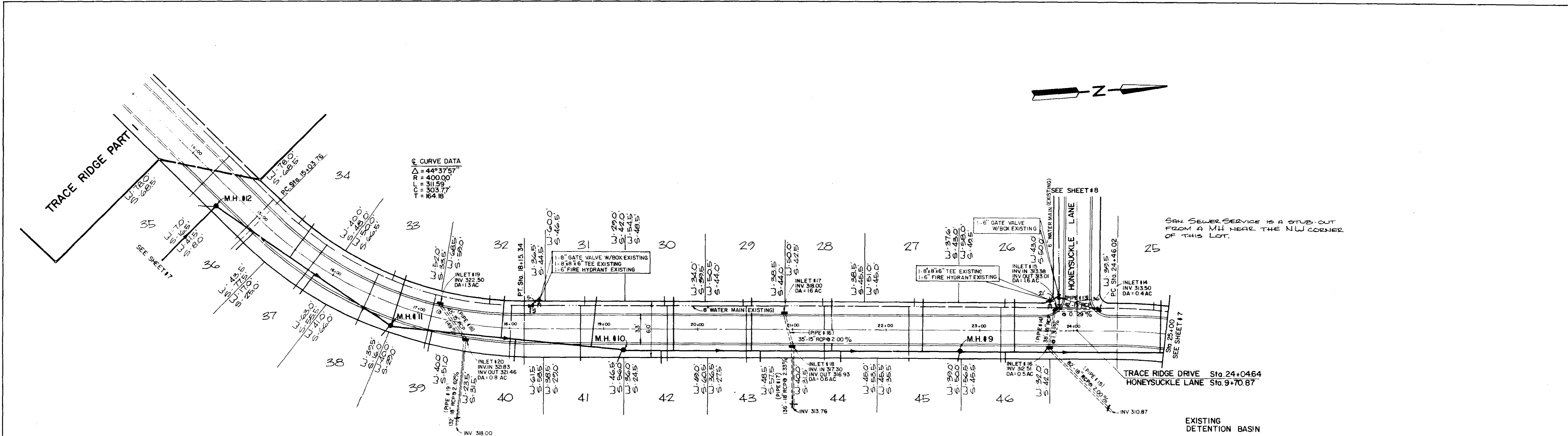
TIMBERCREST DRIVE

TIMBERCREST DRIVE

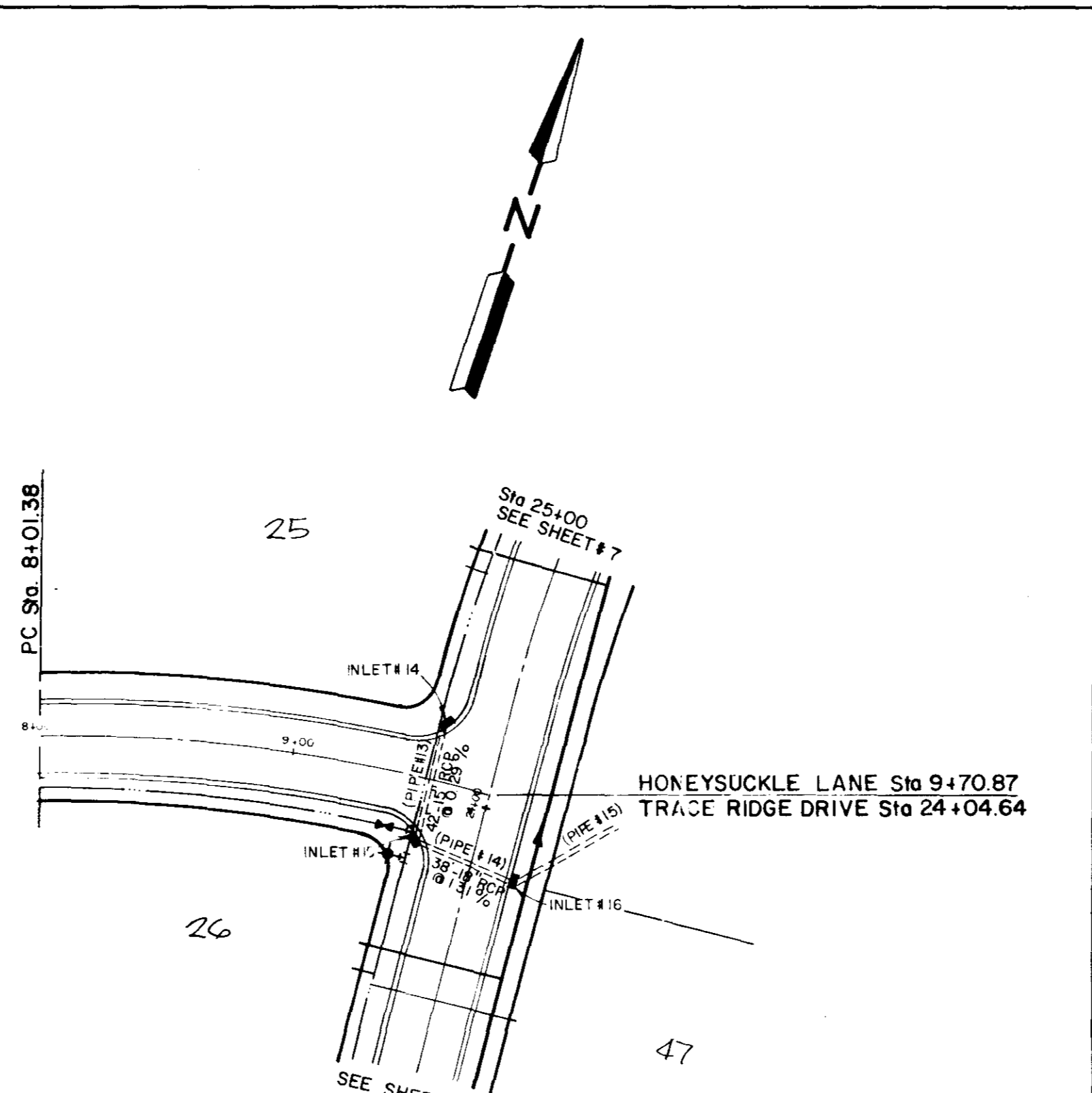
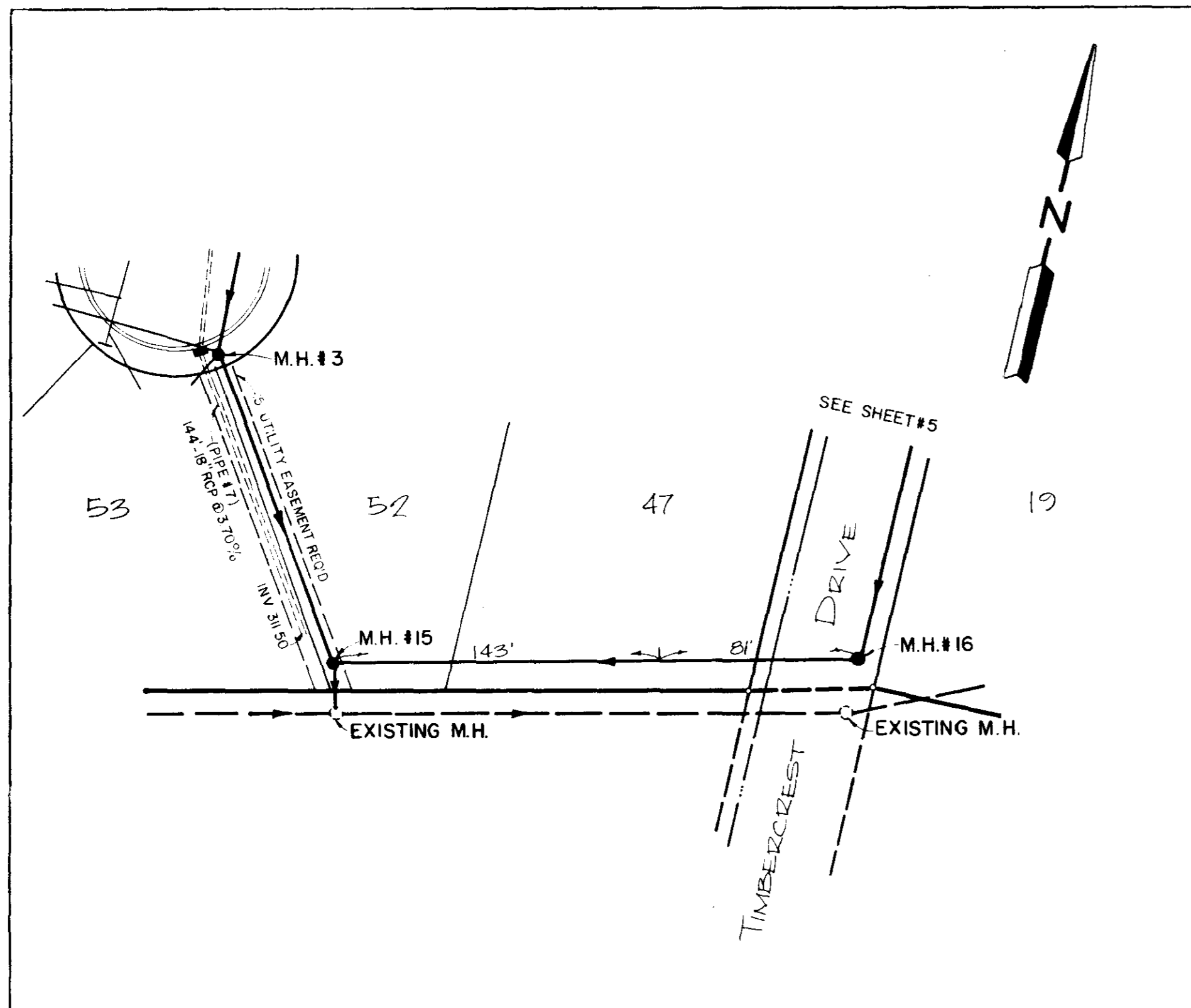


PLAN
 SURVEYED BY: _____ DATE: _____
 NOTE BOOK NO. _____
 ALIGNED CHECKED BY: _____
 RT. OF WAY CHECKED BY: _____

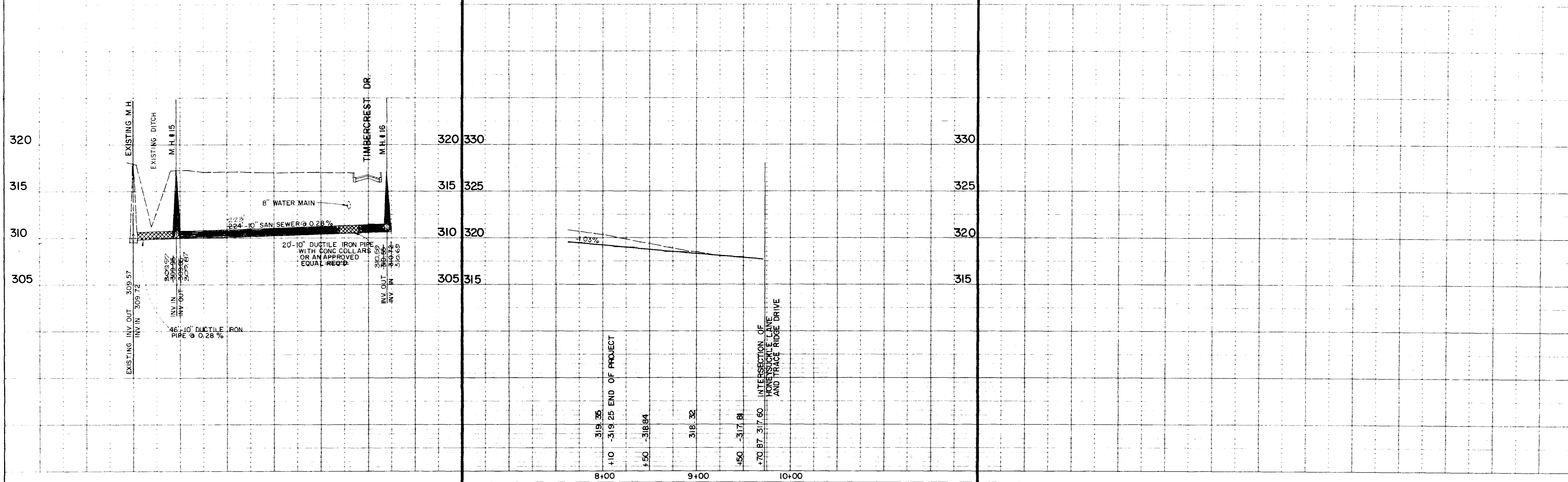
PROFILE
 SURVEYED BY: _____ DATE: _____
 NOTE BOOK NO. _____
 GRADES CHECKED BY: _____
 IN. M.S. NOTED BY: _____
 STRUCTURE NOTED BY: _____

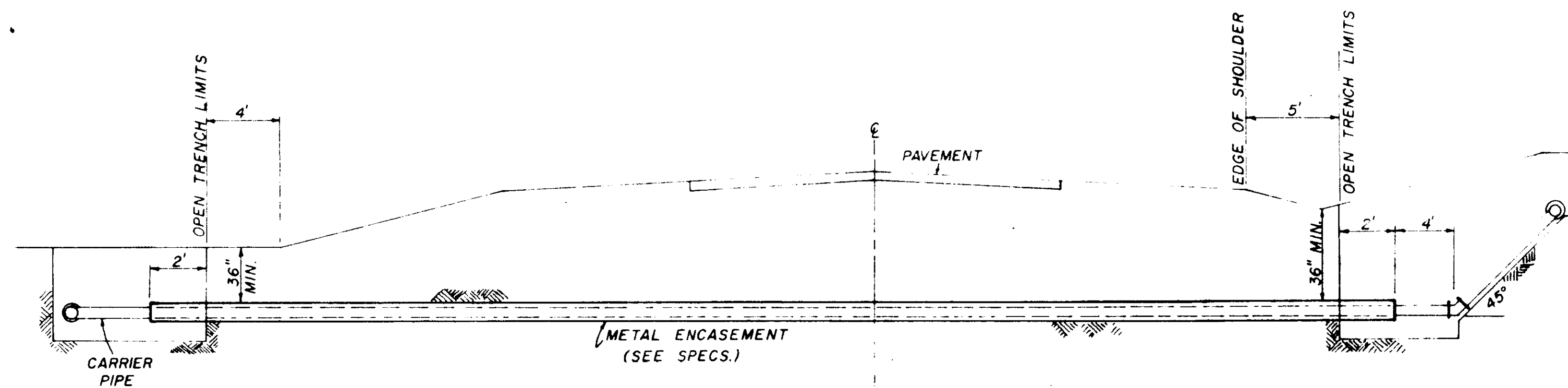


PLAN



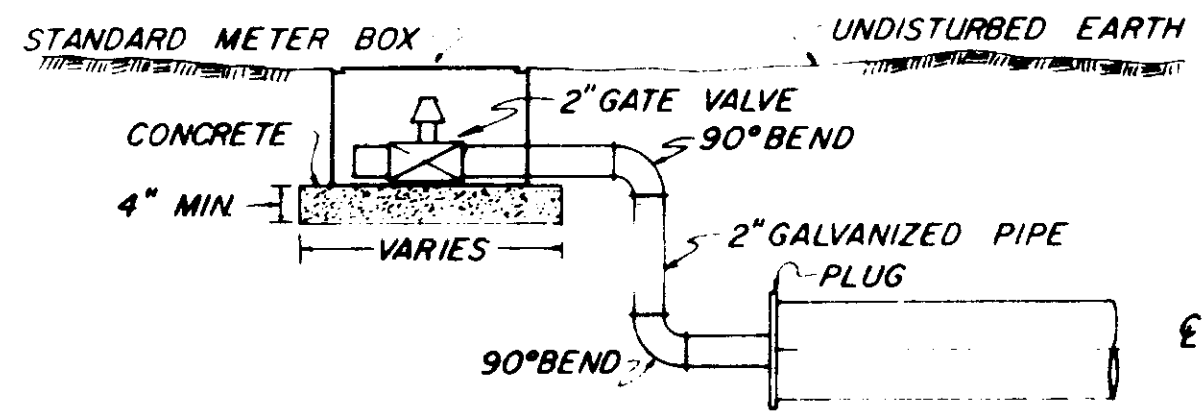
PROFILE



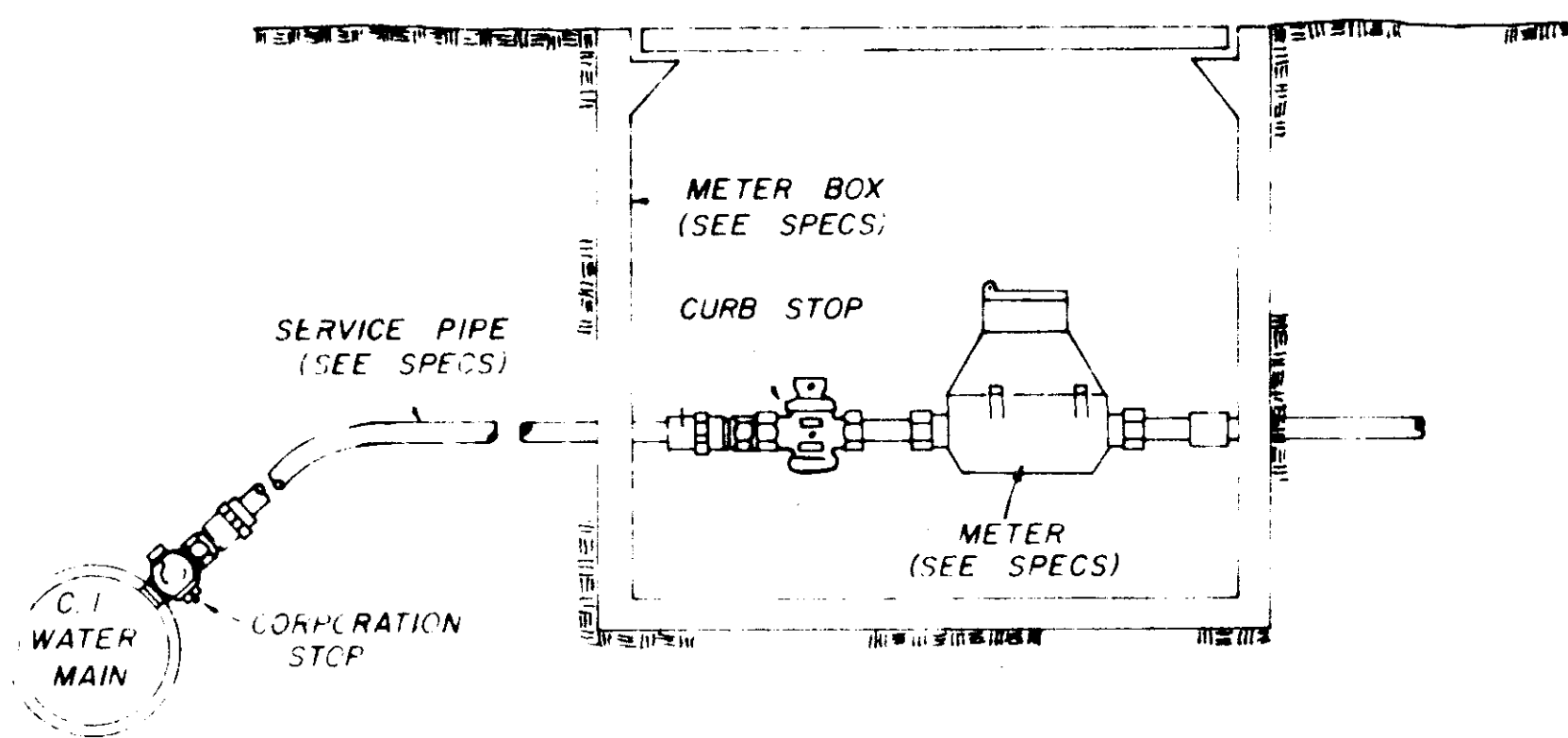


TYPICAL CASSED CROSSING

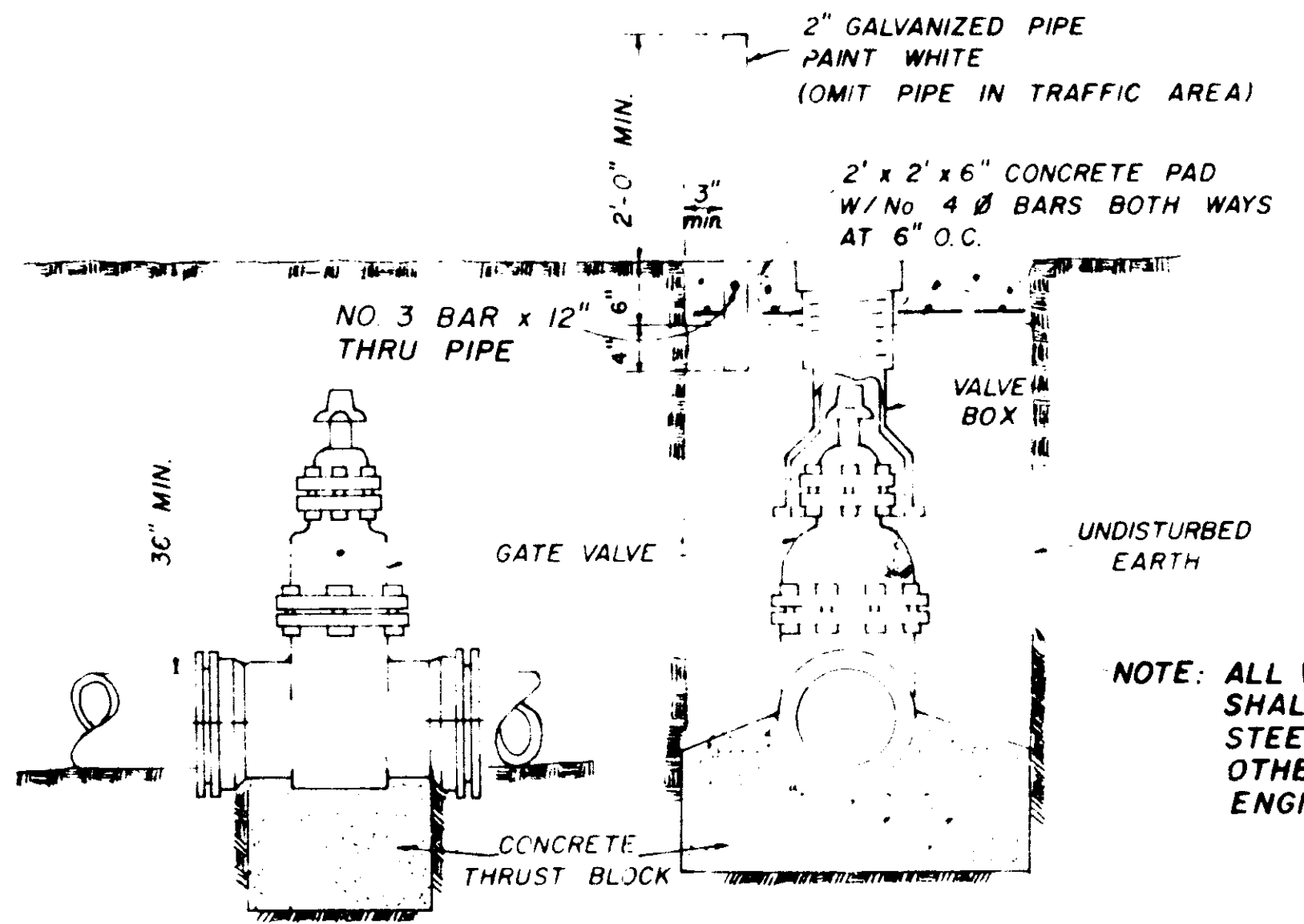
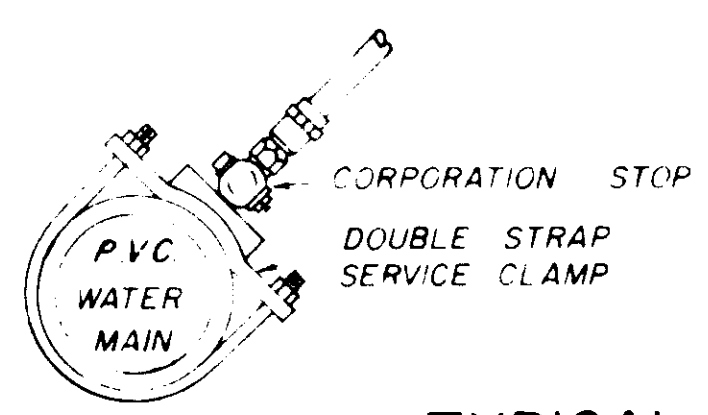
NOTE: COMPENSATION FOR CONCRETE THRUST BLOCKS SHALL BE INCLUDED IN THE UNIT PRICE BID FOR VALVES, FIRE HYDRANTS AND FITTINGS.



TYPICAL 2" BLOW-OFF DETAIL



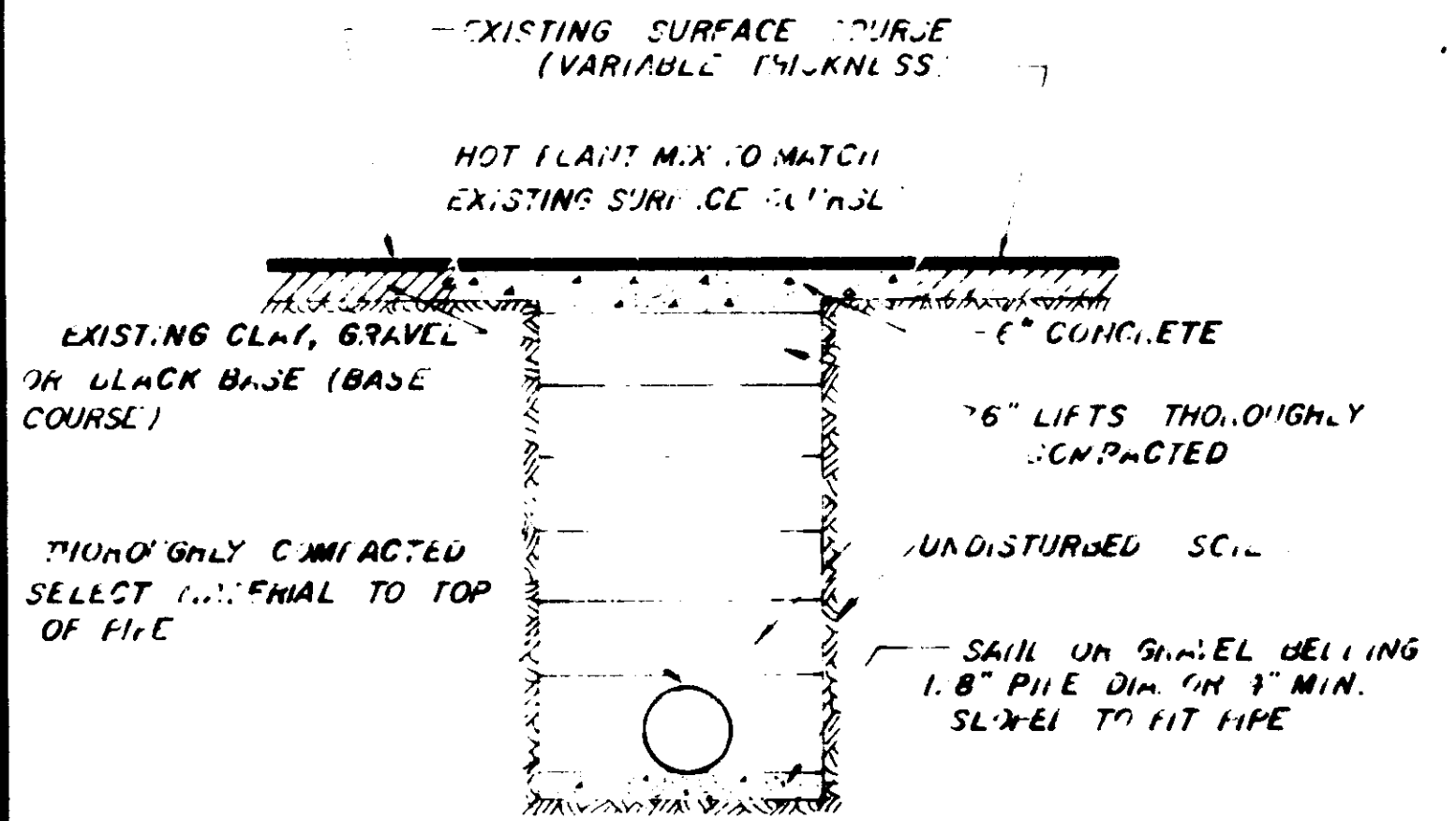
TYPICAL SERVICE ASSEMBLY



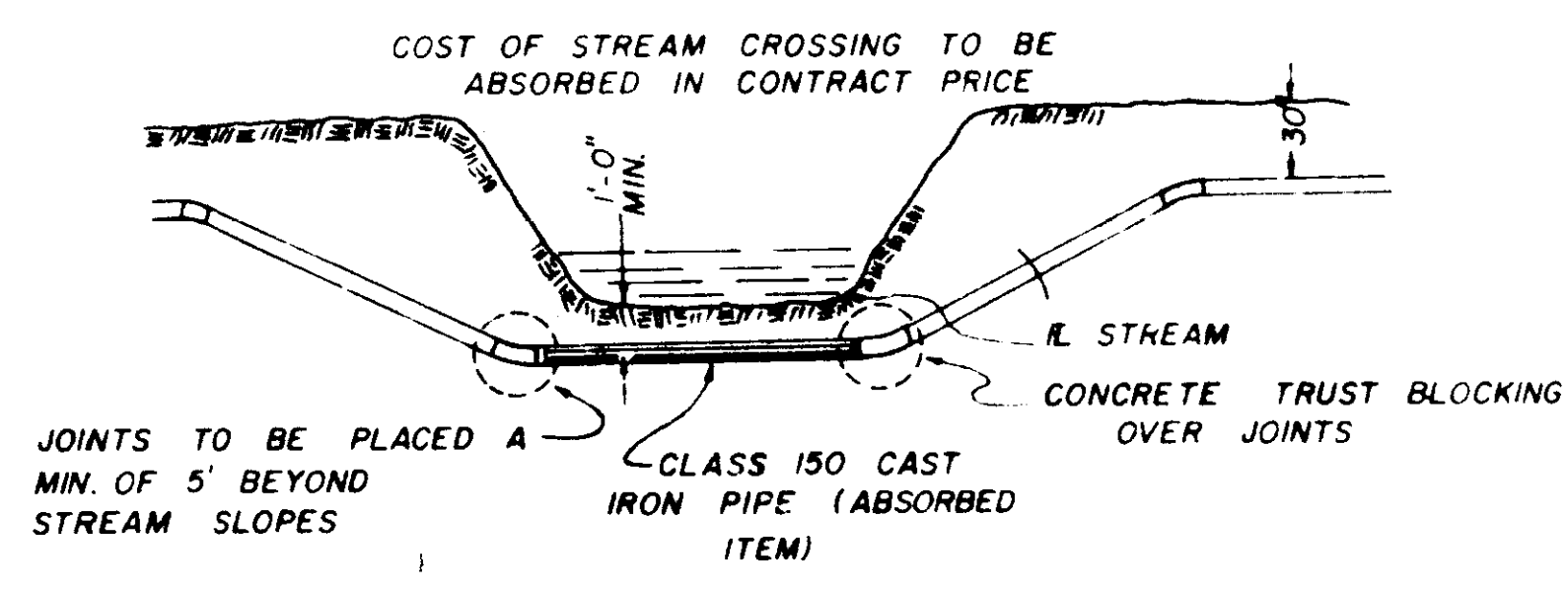
ELEVATION SECTION

TYPICAL VALVE & BOX

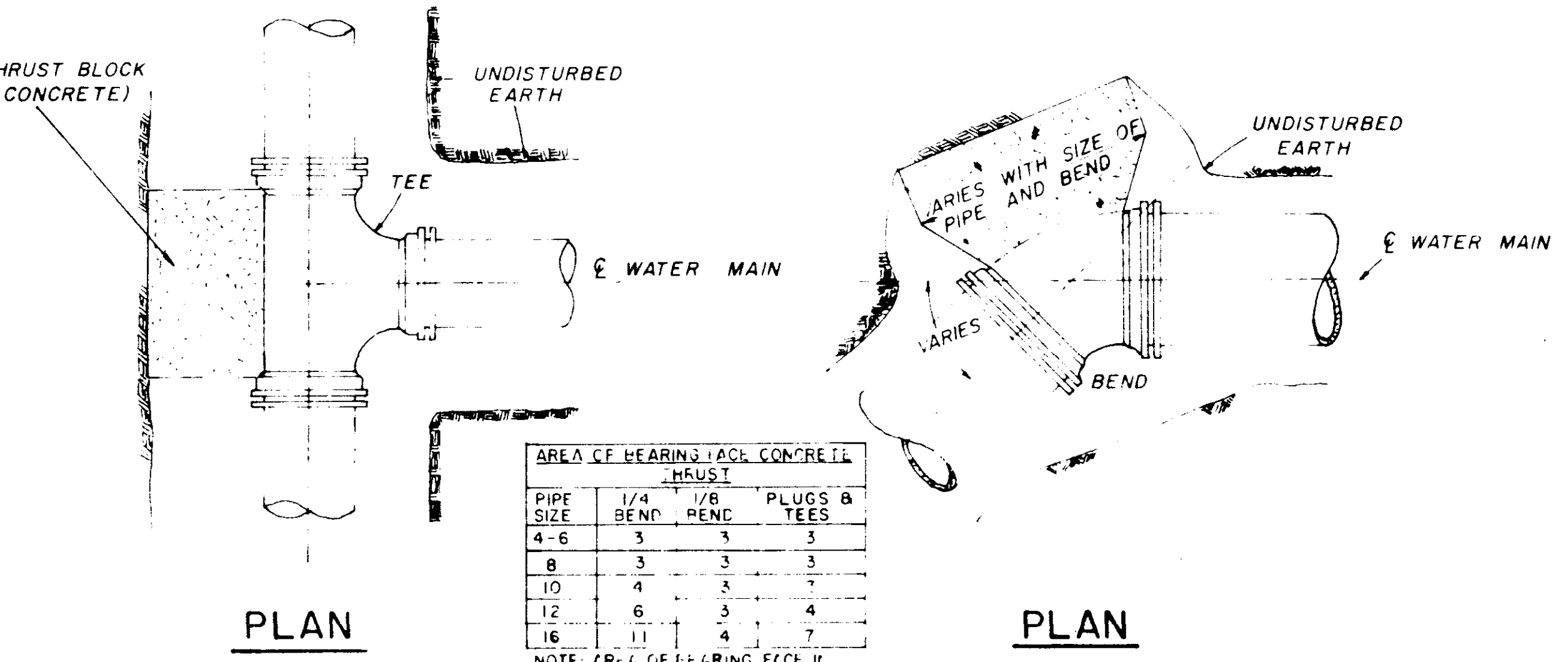
NOTE: ALL WATER MAIN CONNECTIONS SHALL BE RODDED WITH ALL STEEL RODS (3/4" MIN.) UNLESS OTHERWISE INSTRUCTED BY ENGINEER.



STREET REPAIR OF OPEN CUT



TYPICAL STREAM CROSSING



PLAN

PLAN

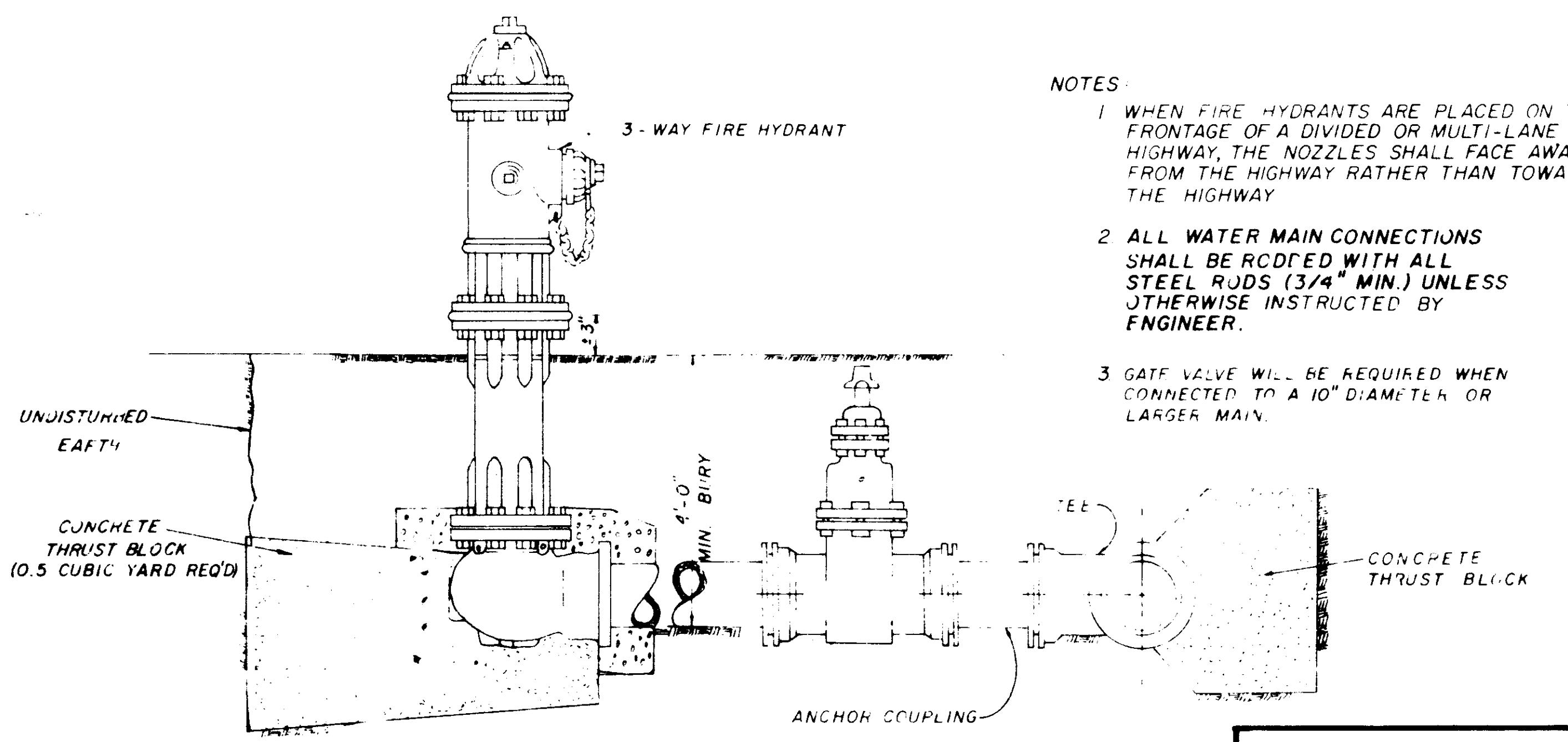
PIPE SIZE	AREA OF HEARING EACH CONCRETE THRUST		PLUGS & TEES
	1/4 BEND	1/8 BEND	
4-6	3	3	3
8	3	3	3
10	4	3	7
12	6	3	4
16	11	4	7

NOTE: AREA OF HEARING EACH CONCRETE THRUST IN SQUARE FEET

SECTION

SECTION

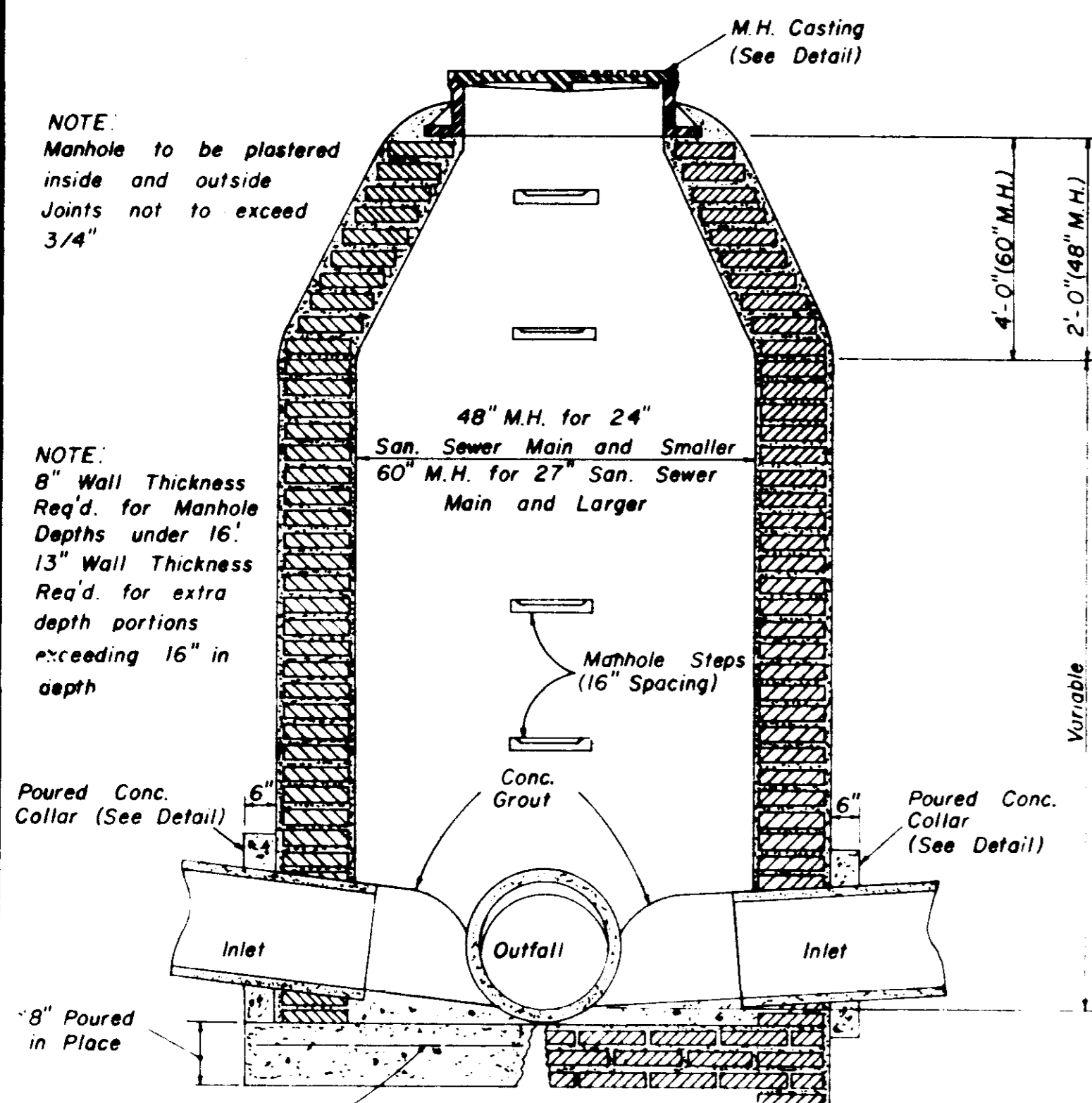
BLOCKING DETAILS FOR TEES & BENDS



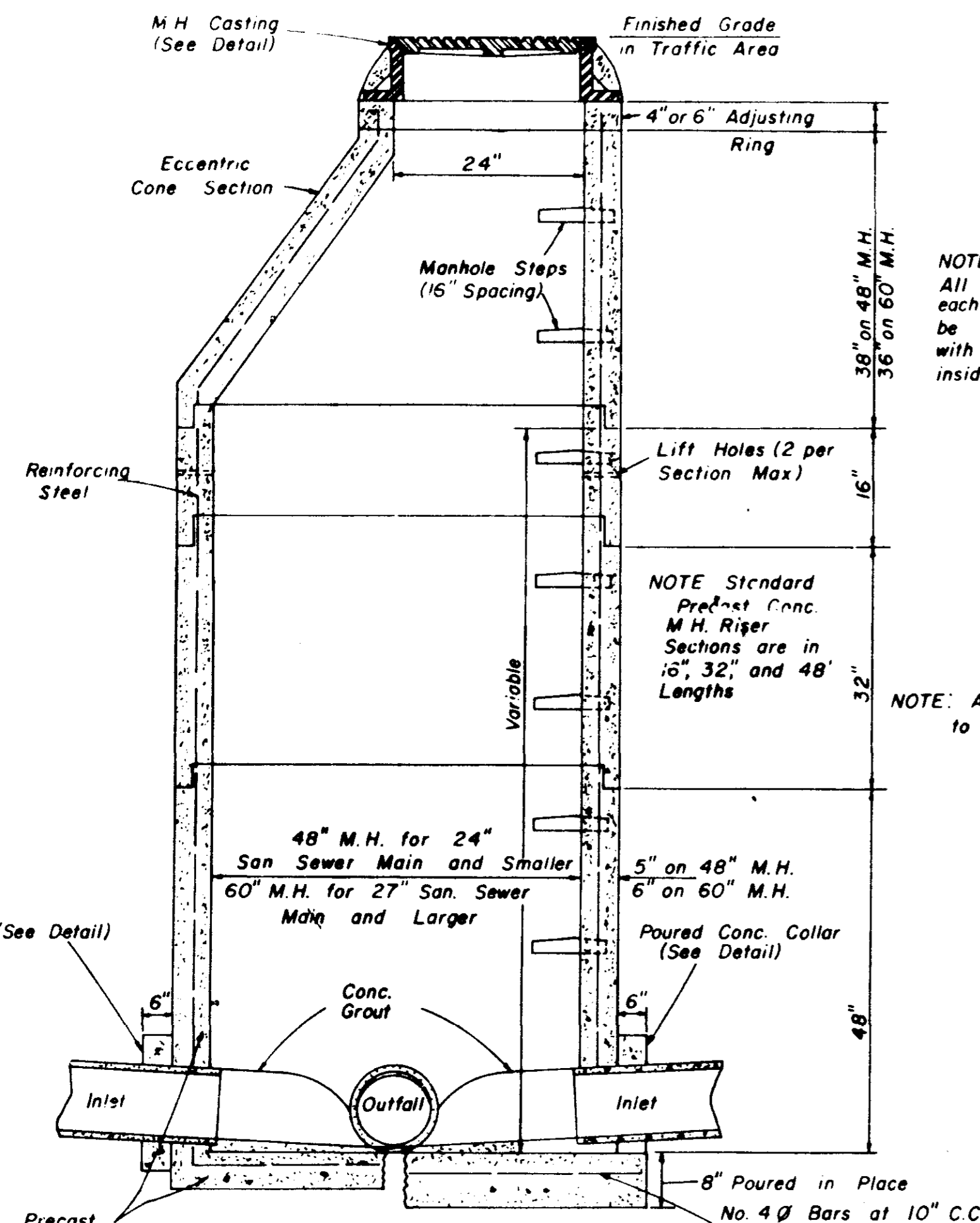
TYPICAL FIRE HYDRANT

- NOTES:
- 1 WHEN FIRE HYDRANTS ARE PLACED ON THE FRONTAGE OF A DIVIDED OR MULTI-LANE HIGHWAY, THE NOZZLES SHALL FACE AWAY FROM THE HIGHWAY RATHER THAN TOWARD THE HIGHWAY
 - 2 ALL WATER MAIN CONNECTIONS SHALL BE RODDED WITH ALL STEEL RODS (3/4" MIN.) UNLESS OTHERWISE INSTRUCTED BY ENGINEER.
 - 3 GATE VALVE WILL BE REQUIRED WHEN CONNECTED TO A 10" DIAMETER OR LARGER MAIN.

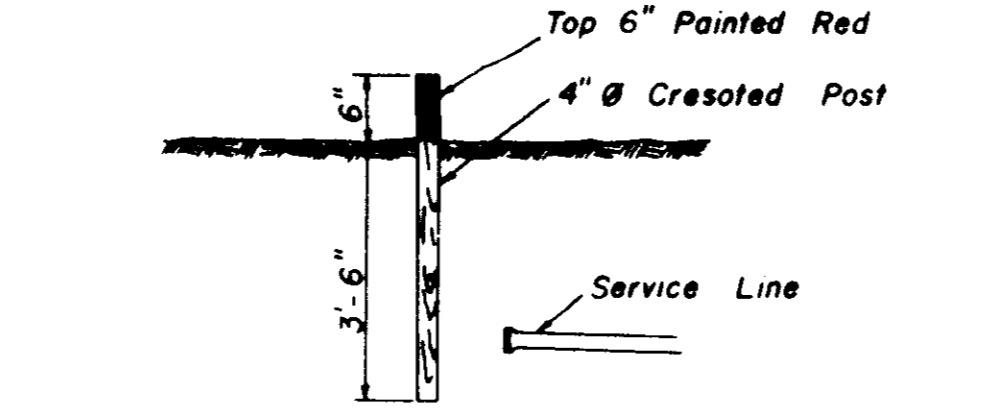
WATER SYSTEM STANDARD DETAILS



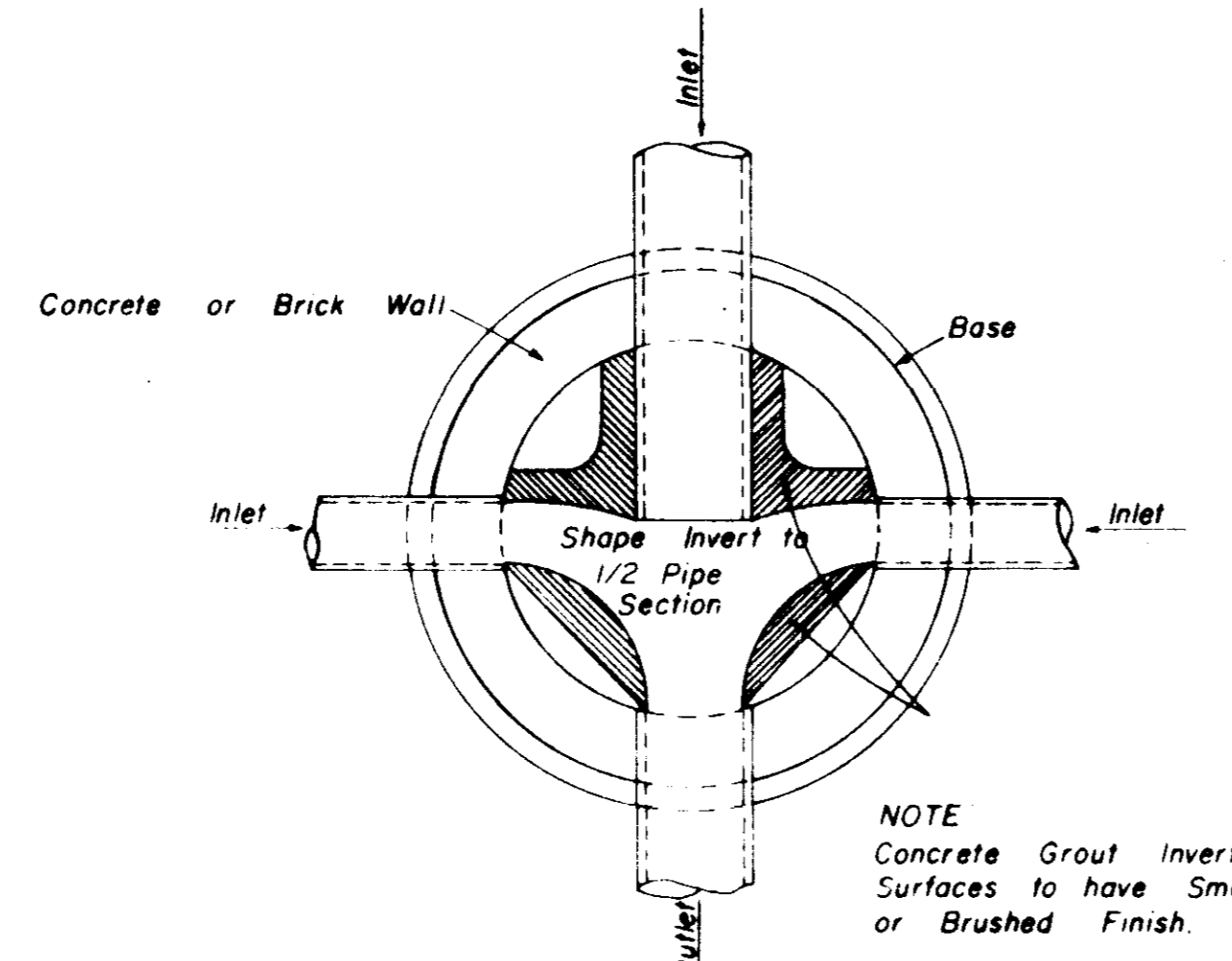
**SECTION
STANDARD BRICK MANHOLE**



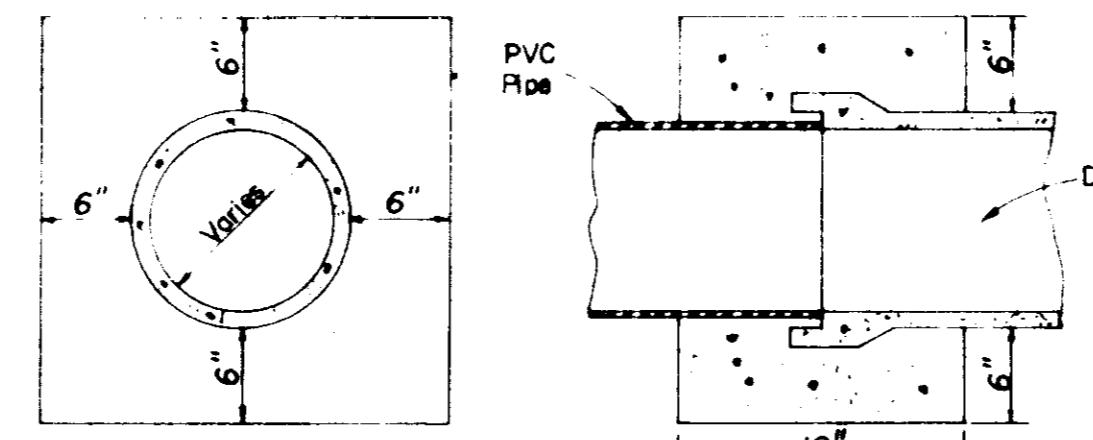
**SECTION
PRECAST CONCRETE MANHOLE**



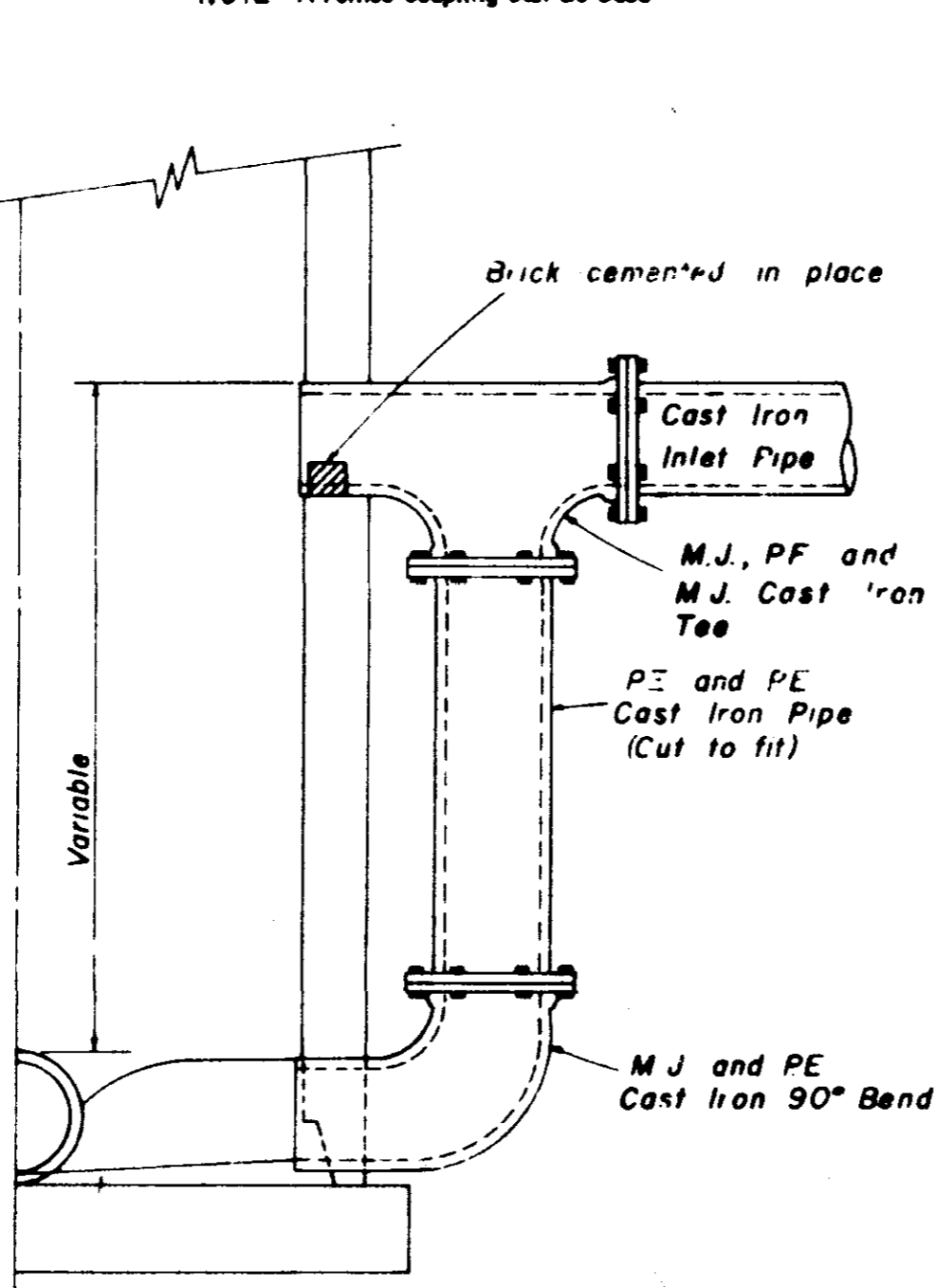
SEWER SERVICE MARKER



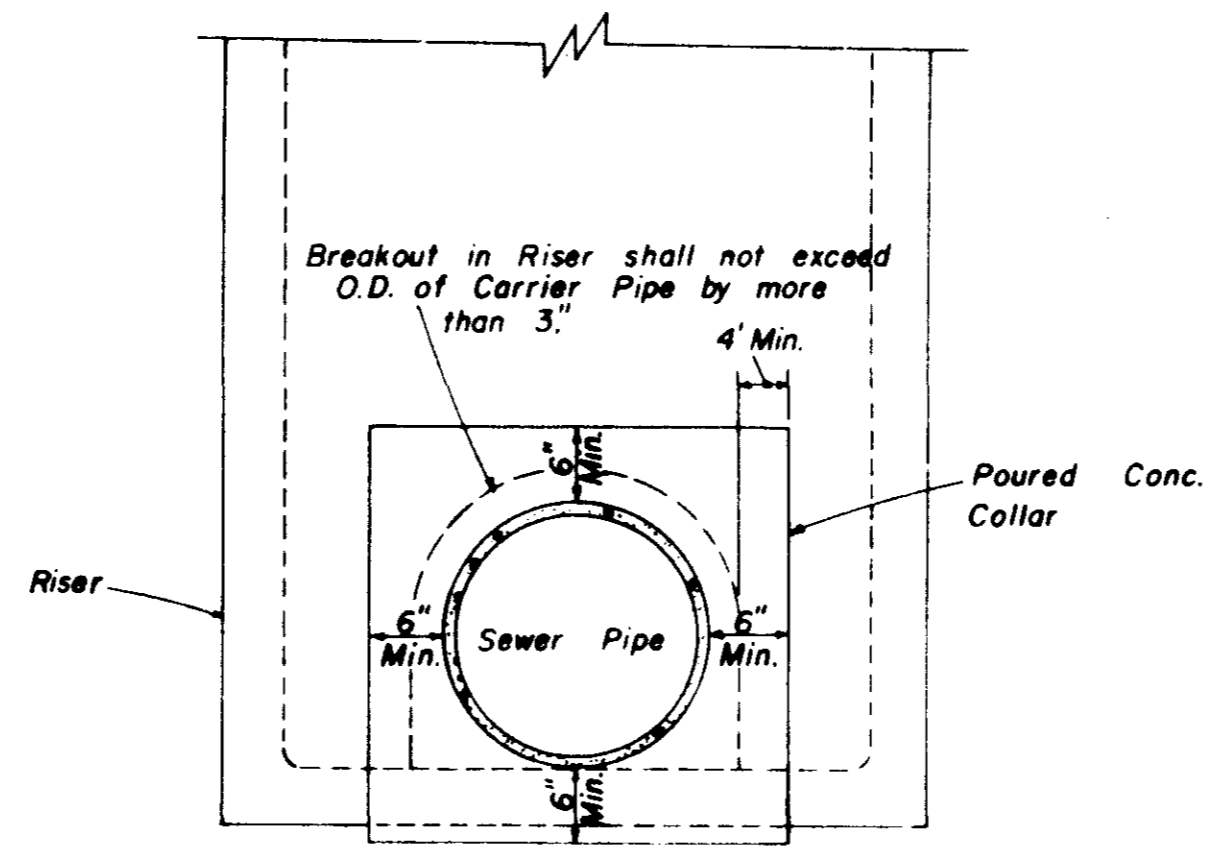
**PLAN OF MANHOLE
FLOW CHANNELS**



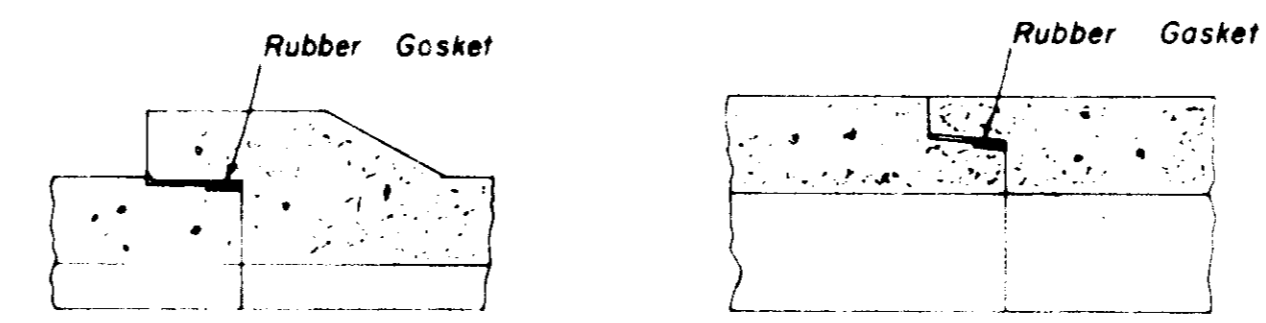
**ELEVATION SECTION
CONCRETE COLLAR DETAILS**



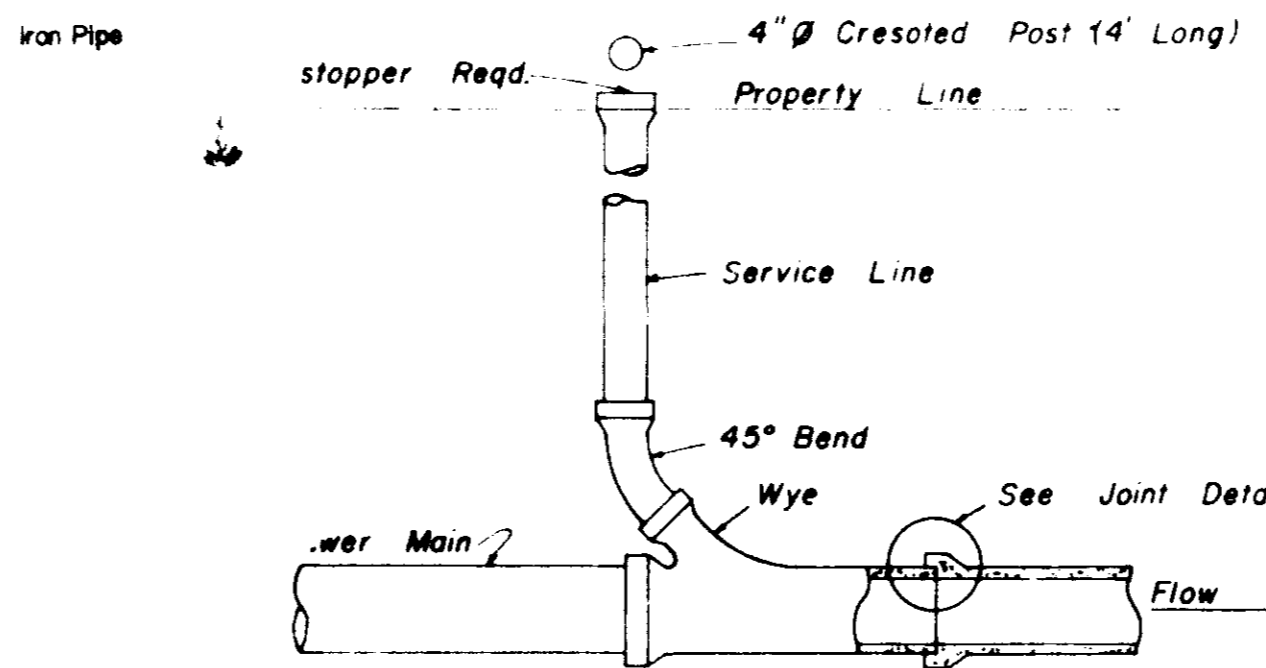
**HALF SECTION
MANHOLE WITH DROP CONNECTION**



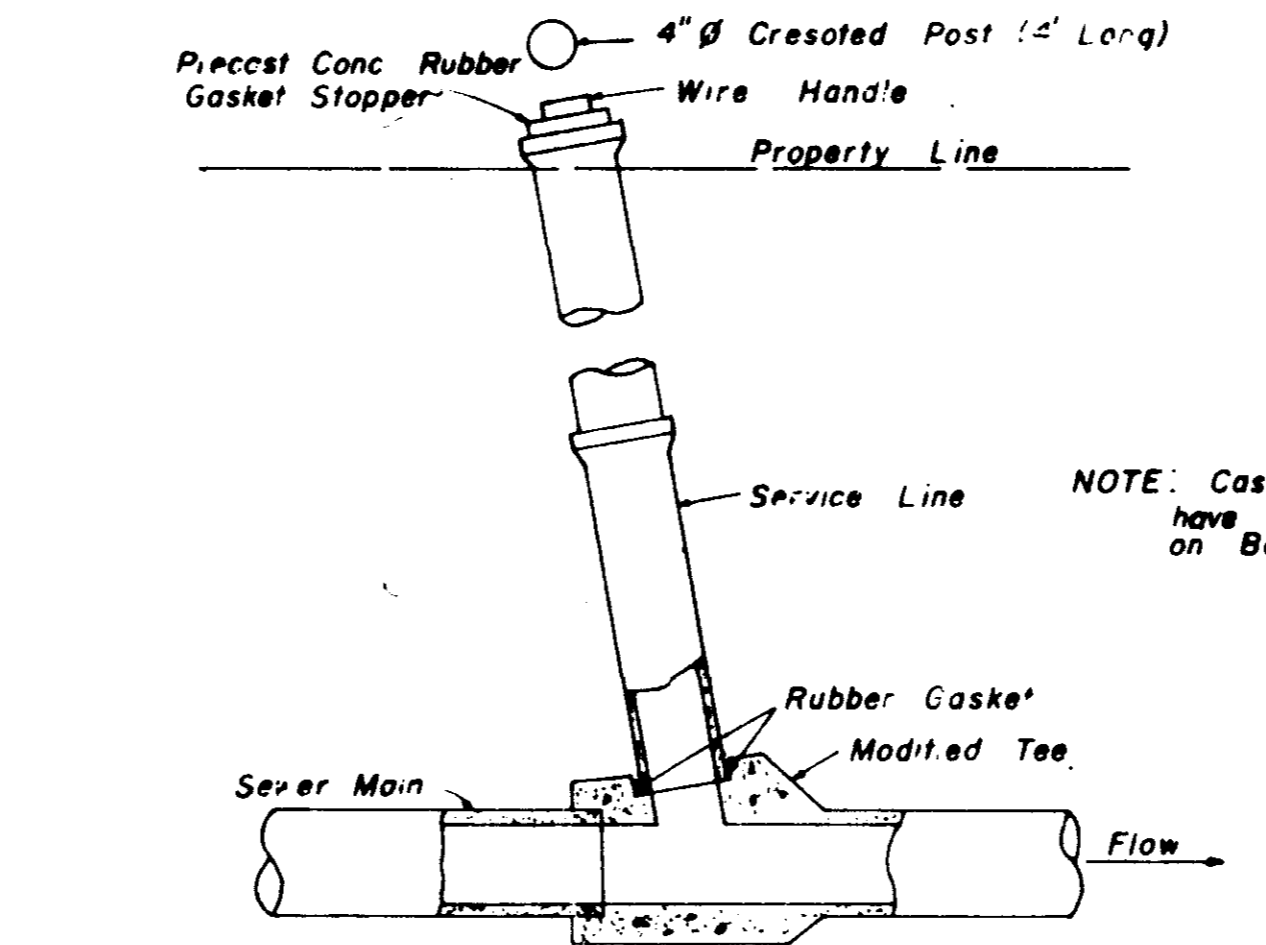
**ELEVATION
CONCRETE COLLAR AT
MANHOLE CONNECTION**



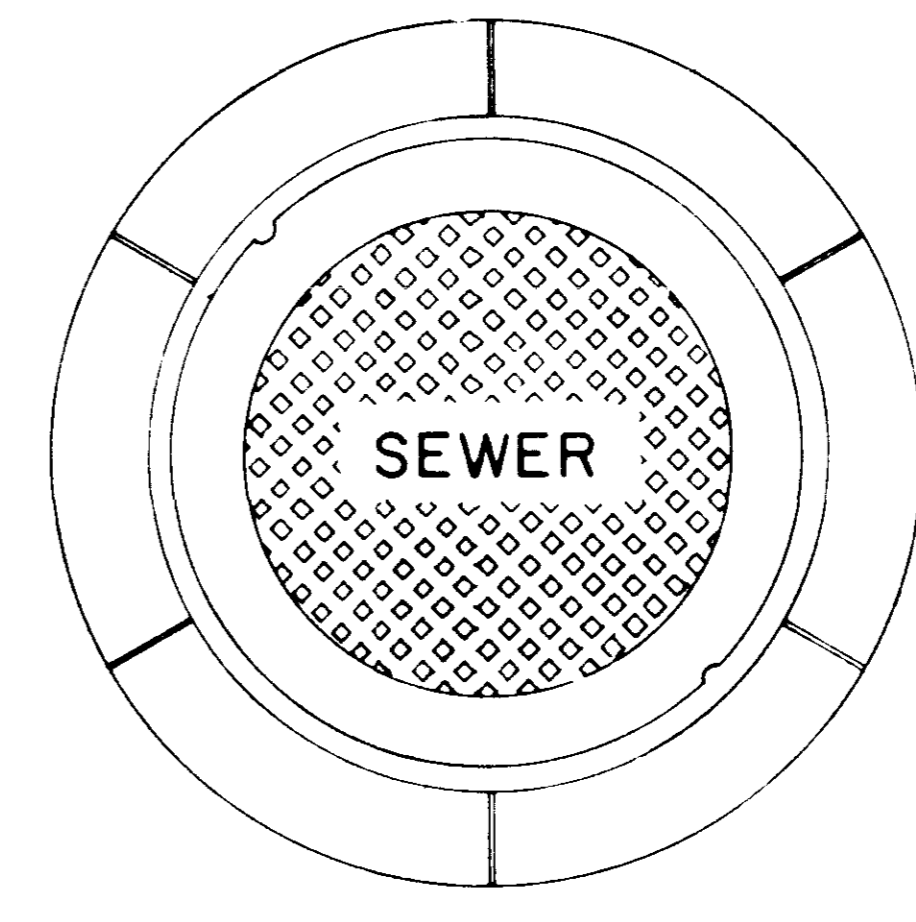
**BELL & SPIGOT TONGUE & GROOVE
JOINT DETAILS**



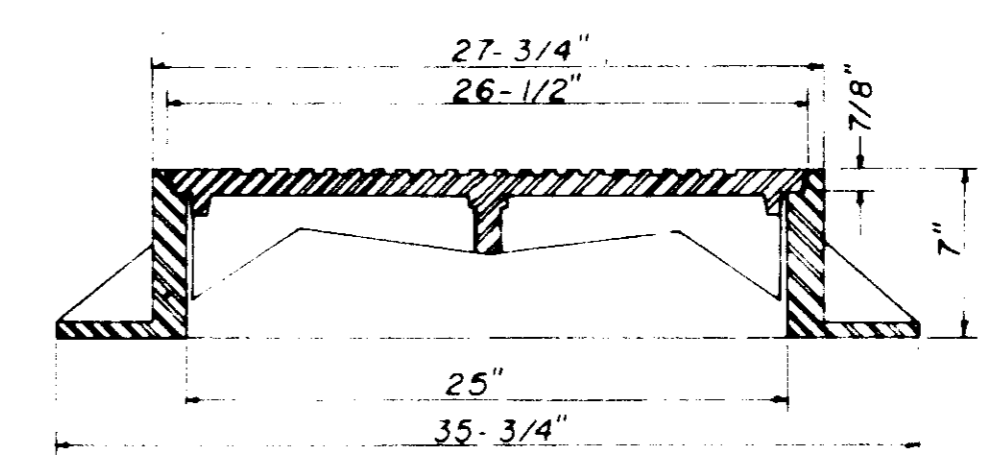
**TYPICAL SERVICE TO PROPERTY LINE
WITH WYE JOINT**



**TYPICAL SERVICE TO PROPERTY LINE
WITH MODIFIED TEE JOINT**

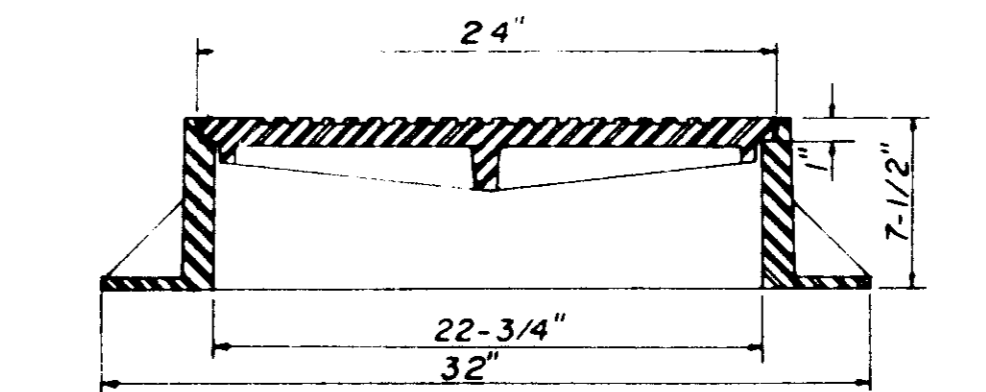


**PLAN
MANHOLE CASTING**



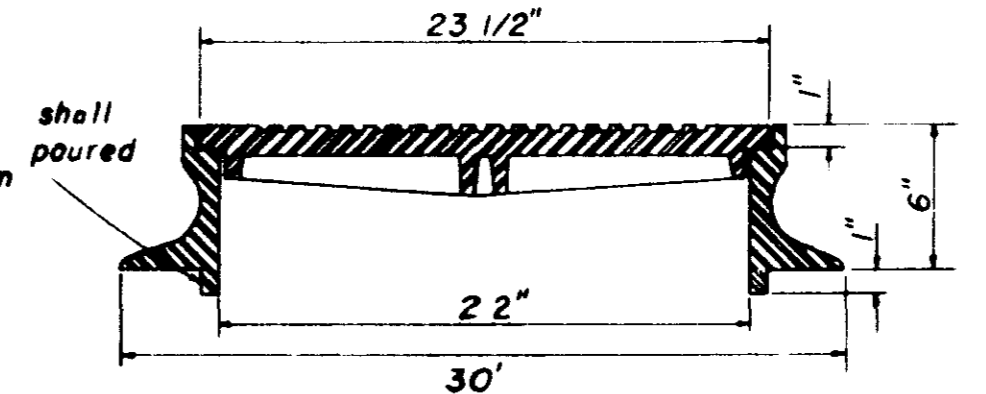
**SECTION
TYPE \"A\" MANHOLE CASTING**

NOTE: 1. Use Type \"A\" Manhole Casting in Street R.O.W.
2. Use Harper No. 2, City of Jackson Standard (420 lbs.) or Vulcan No. VM-15, City of Jackson Standard (420 lbs.)



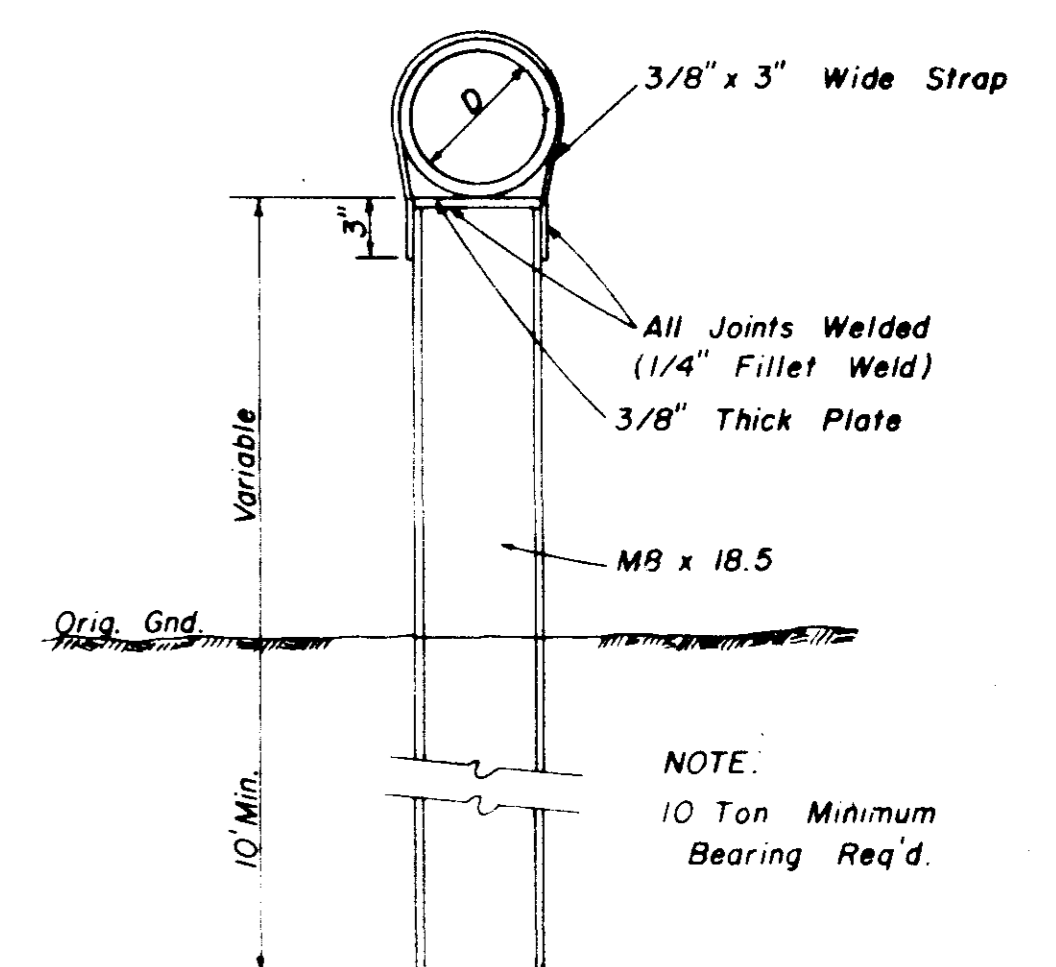
**SECTION
TYPE \"B\" MANHOLE CASTING**

NOTE: 1. Use Type \"B\" Manhole Casting for any Manhole not in a Street R.O.W.
2. Use Harper No. 1 (M.S.P.E. Standard) Light Weight (330 lbs.) or Vulcan No. VM-17 (300 lbs.) or Opelika Foundry No. C-2-1 (325 lbs.)

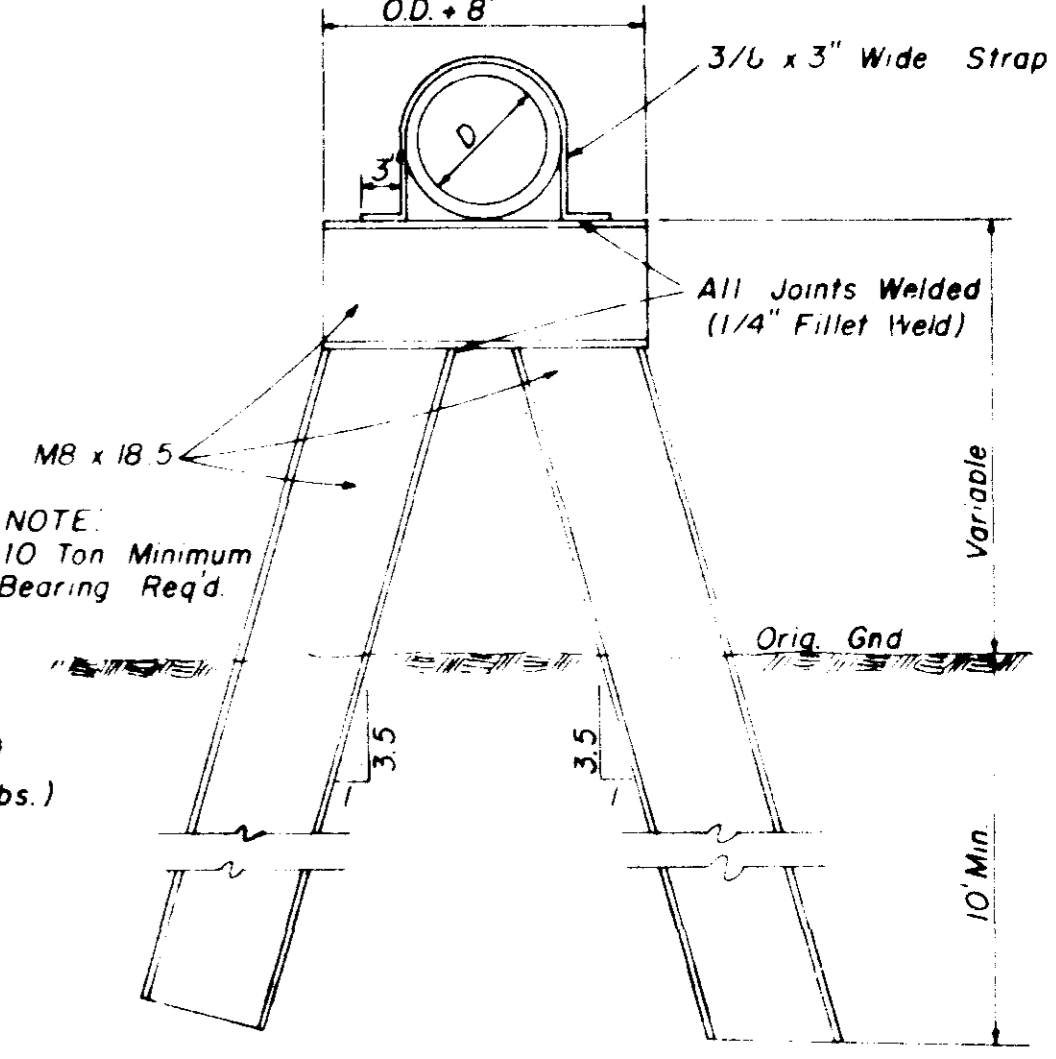


**SECTION
TYPE \"C\" MANHOLE CASTING**

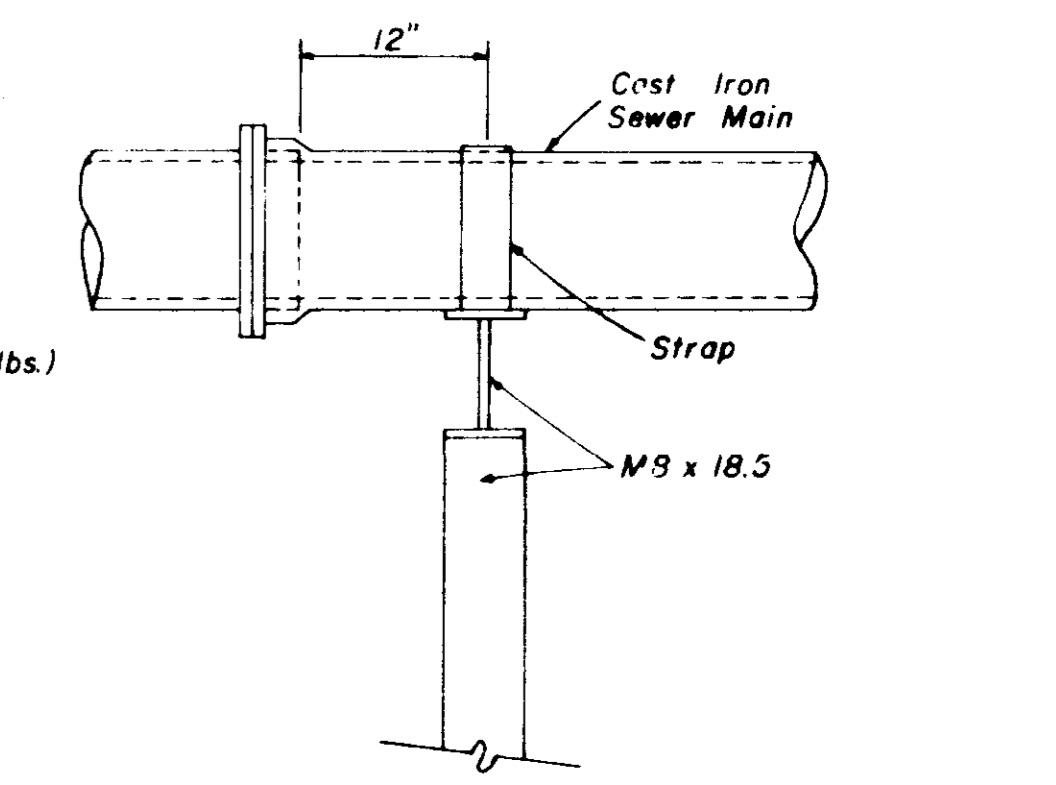
NOTE: 1. Use Type \"C\" Manhole Casting for Precast Manhole not in a Street R.O.W.
2. Use Harper No. 8 (330 lbs.) or Neenan No. R-1779 (300 lbs.) or Vulcan No. VM-7 (330 lbs.)



**DETAIL
TYPE \"A\" PIER**

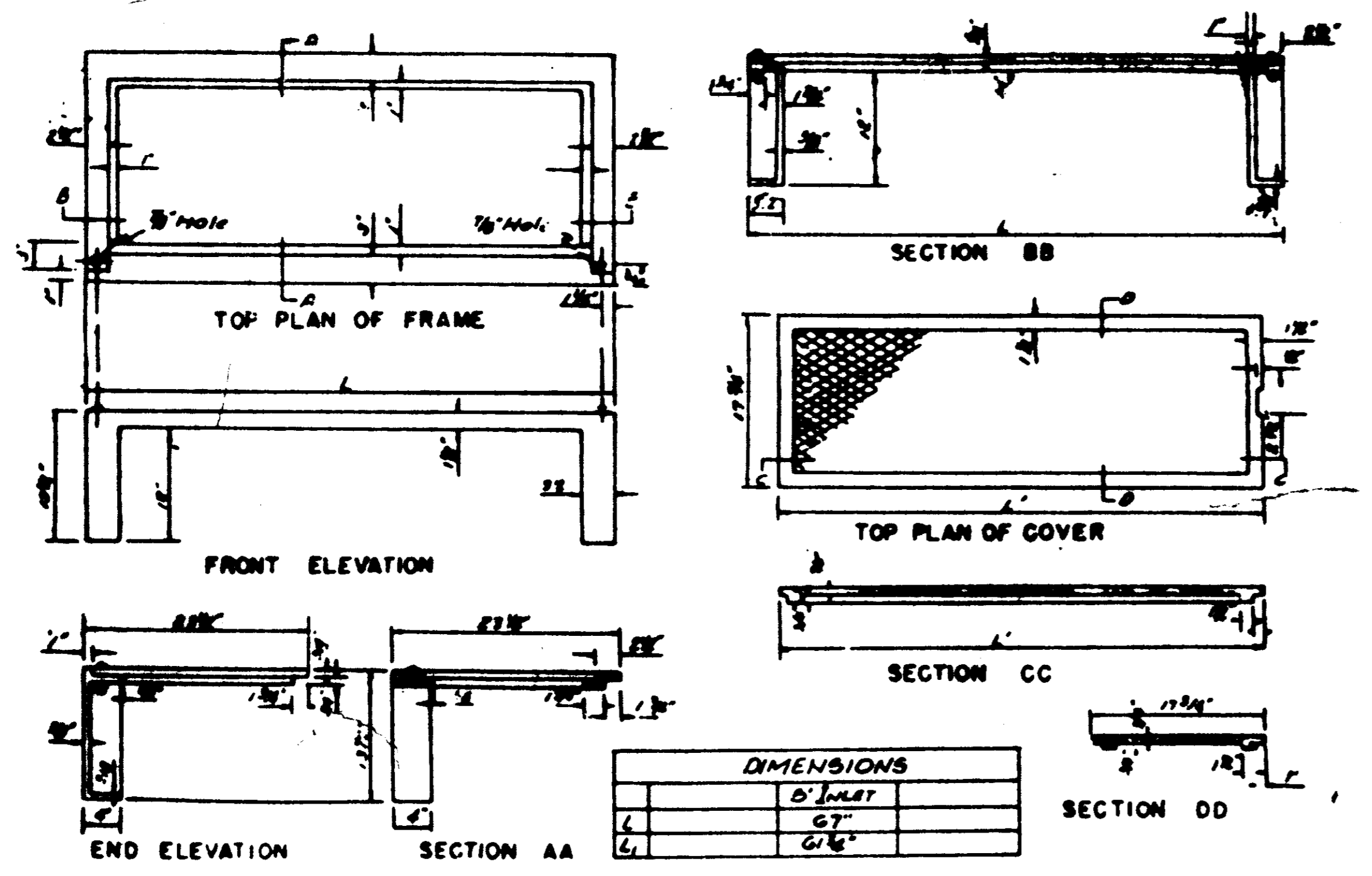


**DETAIL
TYPE \"B\" PIER**



**SIDE ELEVATION
TYPE \"B\" PIER**

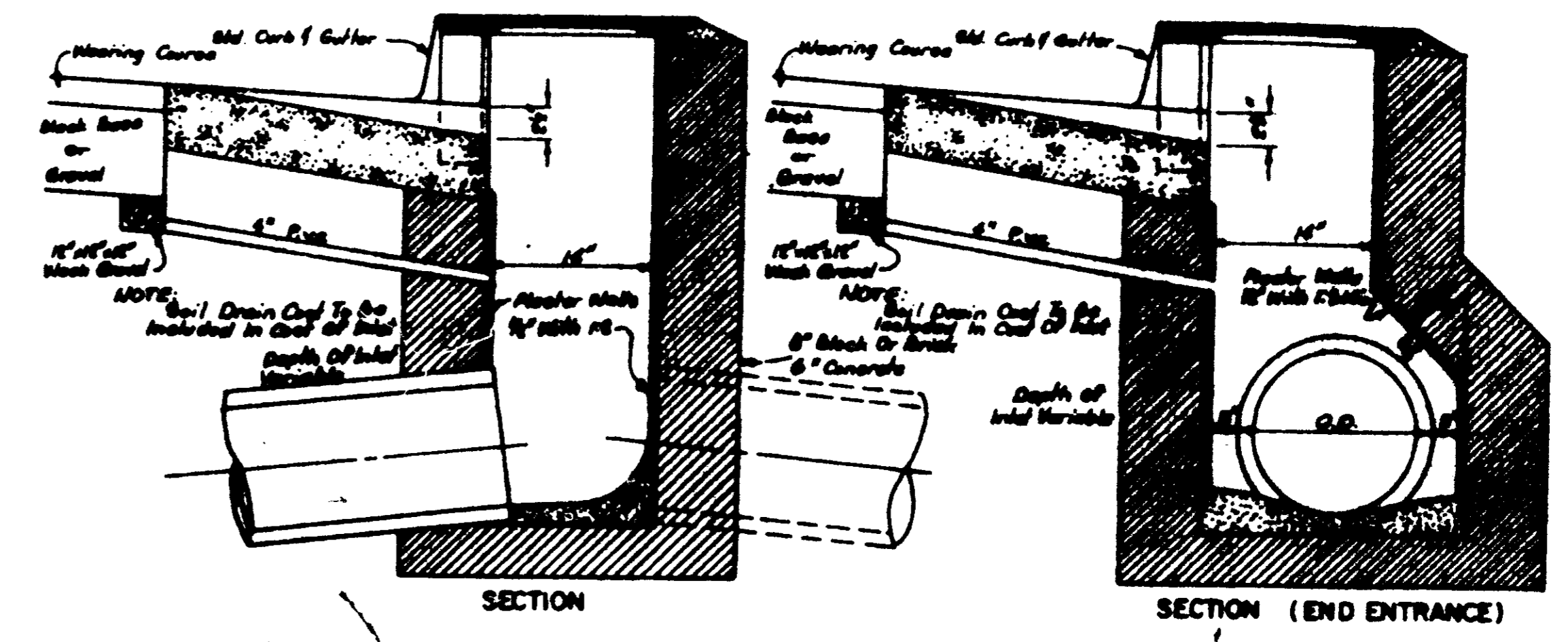
**SANITARY SEWER
STANDARD DETAILS**



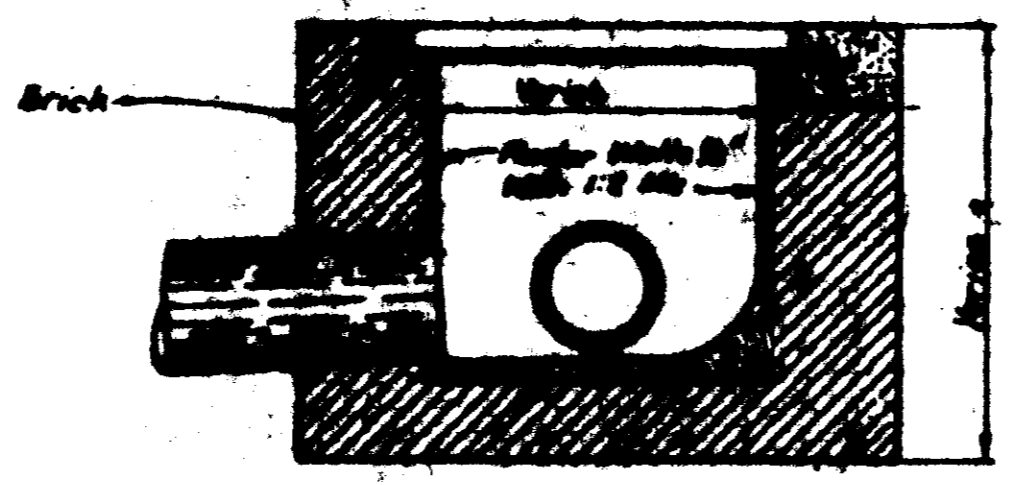
DIMENSIONS

	5" HOLE
	1/2" HOLE
	12" x 12"

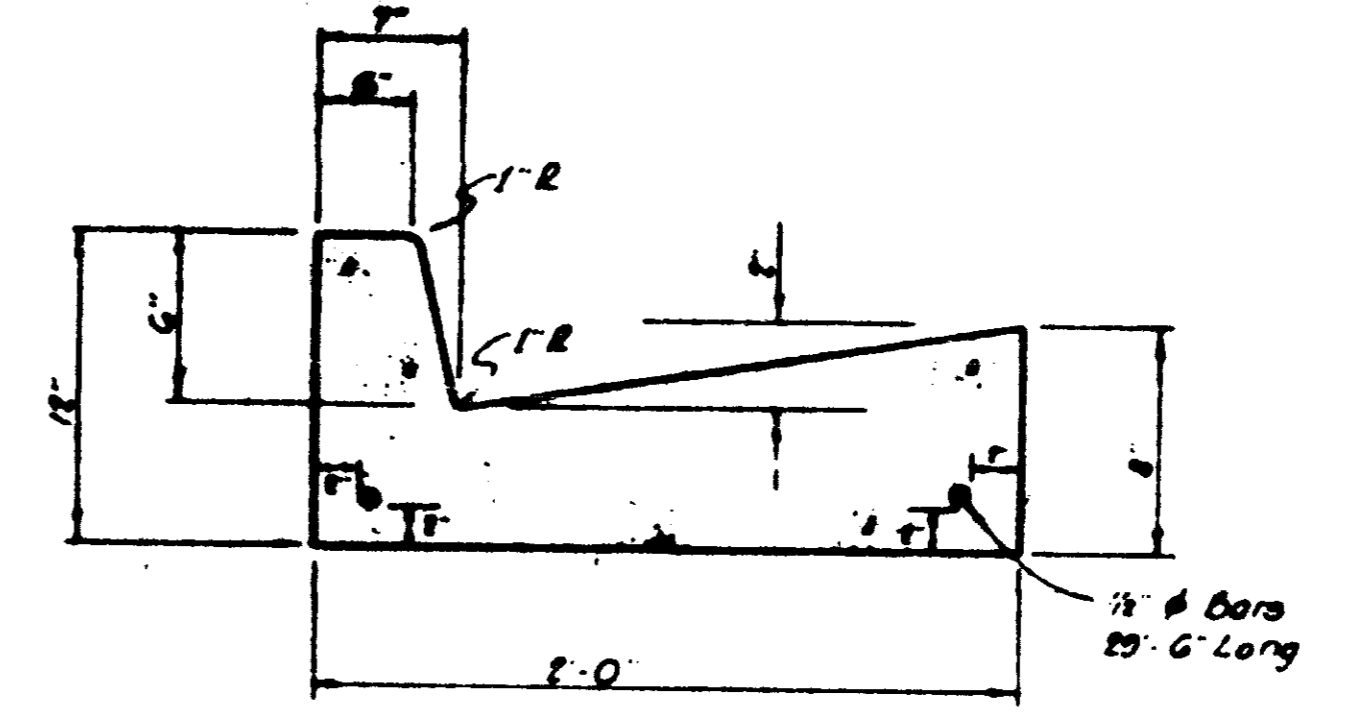
STANDARD CURB INLET CASTING



STANDARD CURB INLET



JUNCTION BOX WITH 24° NON-TRAFFIC OPEN GRATE



STANDARD CURB & GUTTER

NOTE: Water Service Connections Shall Be Marked In The Face Of The Curb With A "W" And The Sanitary Sewer Service Connections Shall Be Marked With An "S".