

CONTRACT DRAWINGS

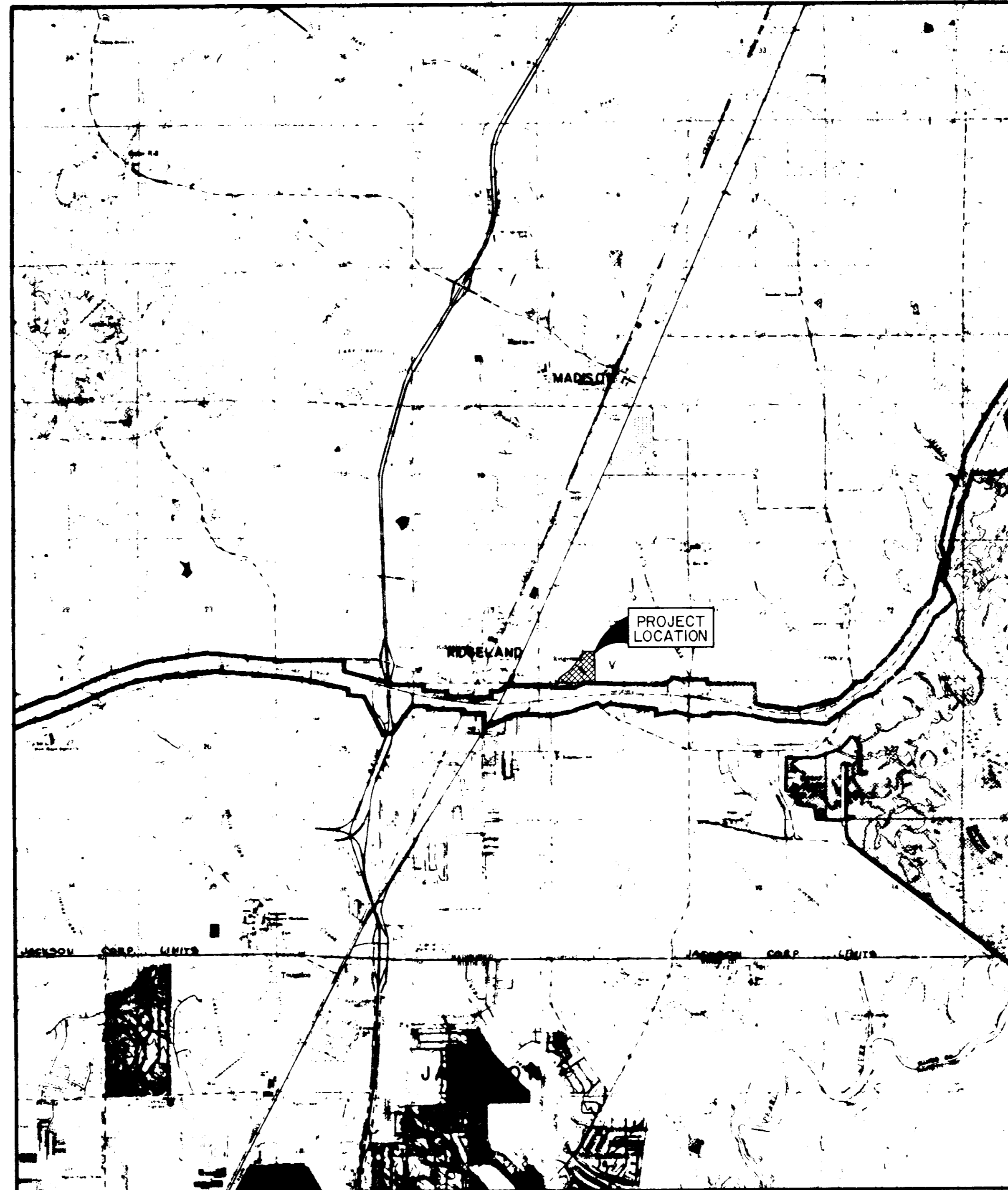
FOR

TRACE WOODS SUBDIVISION

STREETS, DRAINAGE, SANITARY SEWER & WATER SYSTEM

ESTIMATED QUANTITIES

ITEM NO.	ITEM DESCRIPTION	ESTIMATED QUANTITY	UNIT
STREETS & DRAINAGE			
100-1	CLEARING AND GRUBBING	4.1	AC
200-1	EXCAVATION-COMMON	10400	CY
200-2	EXCAVATION-CHANNEL	500	CY
200-3	EXCAVATION-STREET UNDERCUT	2270	CY
200-4	EMBANKMENT	500	CY
200-5	EMBANKMENT-EXISTING DITCH	500	CY
400-1	4" BLACK BASE COURSE	4403	SY
400-2	6" BLACK BASE COURSE	5426	SY
400-3	1-1/2" BITUMINOUS SURFACE	9829	SY
600-1	CONCRETE CURB AND GUTTER	6423	LF
600-1	CURB INLET	17	EA
600-2	15" REINFORCED CONCRETE PIPE	948	LF
600-3	18" REINFORCED CONCRETE PIPE	665	LF
600-4	24" REINFORCED CONCRETE PIPE	208	LF
600-5	30" REINFORCED CONCRETE PIPE	68	LF
600-6	36" REINFORCED CONCRETE PIPE	415	LF
600-7	42" REINFORCED CONCRETE PIPE	200	LF
600-8	18" x 11" REINFORCED CONCRETE PIPE	120	LF
600-9	15" RCP FLARED END SECTION	1	EA
600-10	18" RCP FLARED END SECTION	1	EA
600-11	24" RCP FLARED END SECTION	1	EA
600-12	30" RCP FLARED END SECTION	1	EA
600-13	36" FLARED END SECTION	1	EA
600-14	18" x 11" RCP FLARED END SECTION	4	EA
600-15	STORM MANHOLE	2	EA
WATER DISTRIBUTION SYSTEM			
900-1	CONN. TO EXIST. WATER MAIN	2	EA
900-2	8" PVC WATER MAIN, C-900, CLASS 150	3384	LF
900-3	6" PVC WATER MAIN, C-900, CLASS 150	969	LF
900-4	8" x 6" REDUCER	1	EA
900-5	8" x 8" x 8" TEE	3	EA
900-6	8" x 8" x 6" TEE	9	EA
900-7	8" GATE VALVE WITH BOX	6	EA
900-8	8" GATE VALVE WITH BOX	3	EA
900-9	6" FIRE HYDRANT	8	EA
900-10	8" PLUG WITH 2" BLOW-OFF	1	EA
900-11	6" PLUG WITH 2" BLOW-OFF	1	EA
900-12	SERVICE ASSEMBLY	50	EA
900-13	3/4" SERVICE LINE	2050	LF
900-14	SERVICE MARKER	50	EA
SANITARY SEWER SYSTEM			
1000-1	CONN. TO EXIST. MANHOLE	1	EA
1000-2	8" GRAVITY SEWER PIPE (0'-8")	1879	LF
1000-3	8" GRAVITY SEWER PIPE (8'-12")	1482	LF
1000-4	8" DUCTILE IRON PIPE (0'-8")	20	LF
1000-5	8" DUCTILE IRON PIPE (8'-12")	20	LF
1000-6	48" STANDARD MANHOLE (0'-8")	11	EA
1000-7	48" STANDARD MANHOLE (8'-12")	5	EA
1000-8	UNDERCUT & SELECT BACKFILL	290	CY
1000-9	8" SANITARY SEWER SERVICE	1890	LF
1000-10	6" SERVICE TEE	33	EA
1000-11	SERVICE MARKER	50	EA
1000-12	REMOVE EXIST. LIFT STATION	---	LS
GRASS PLANTING			
1100-1	SEEDING	1.7	AC



VICINITY MAP

INDEX TO DRAWINGS

SHEET NO.	DESCRIPTION
1	COVER SHEET
2	GENERAL LAYOUT
3	DRAINAGE LAYOUT
4-7	PLAN-PROFILE SHEETS
8	WATER DETAILS
9	SEWER DETAILS
10	DRAINAGE DETAILS

I hereby certify that a final field survey was conducted and that these "as built" plans resulted from said survey and are true and correct to the best of my knowledge. I further certify that each improvement has been constructed in accordance with City specifications.

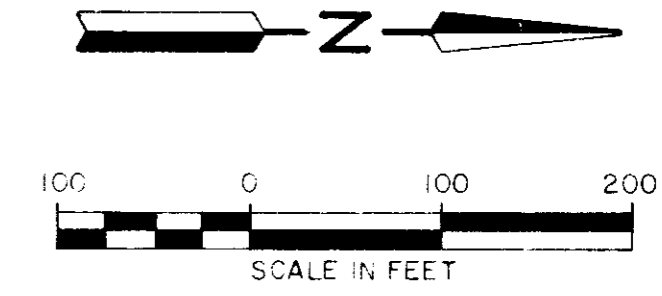
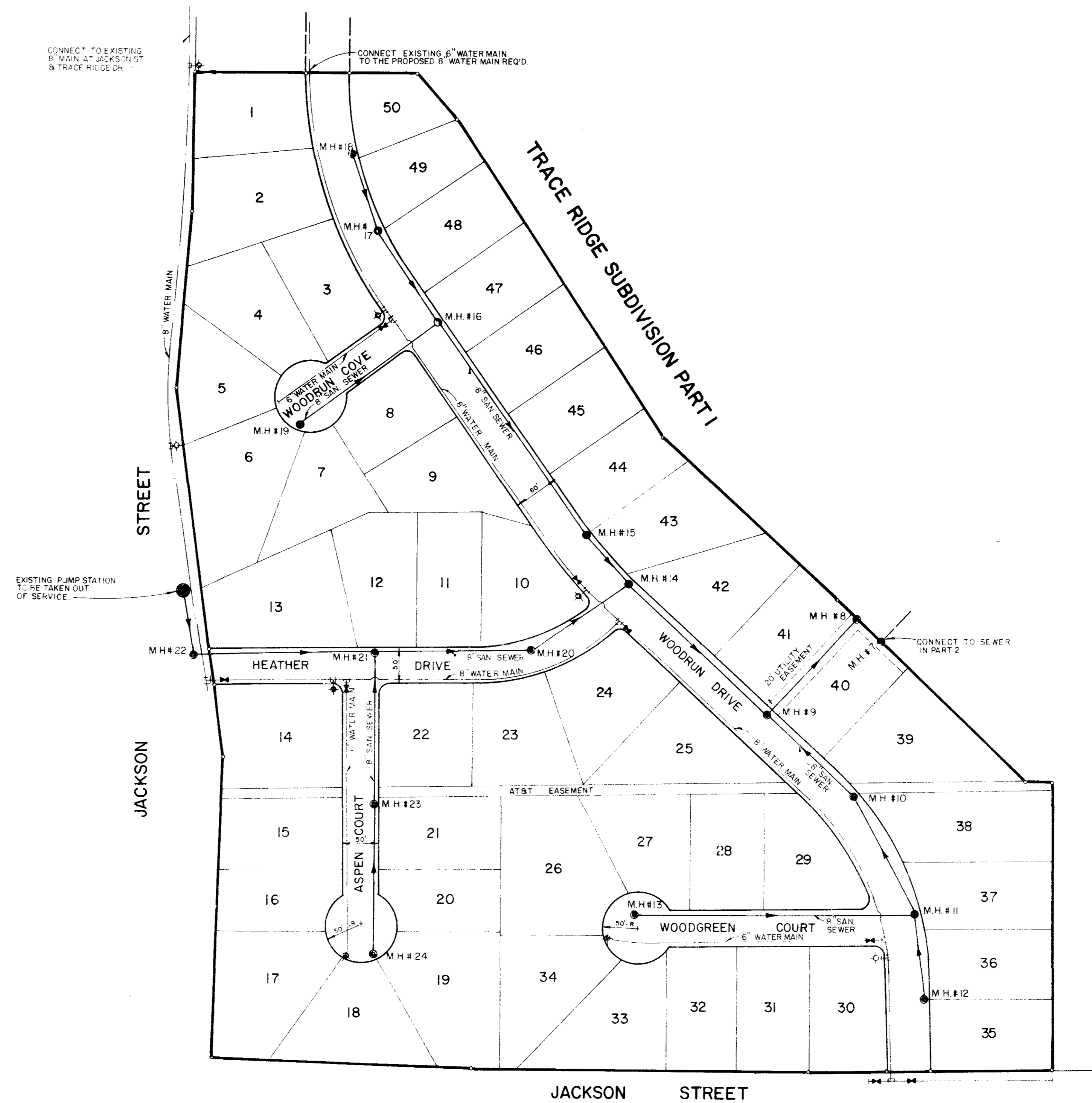
Phillip L. Browning, P. E. No. 5952

AS BUILTS

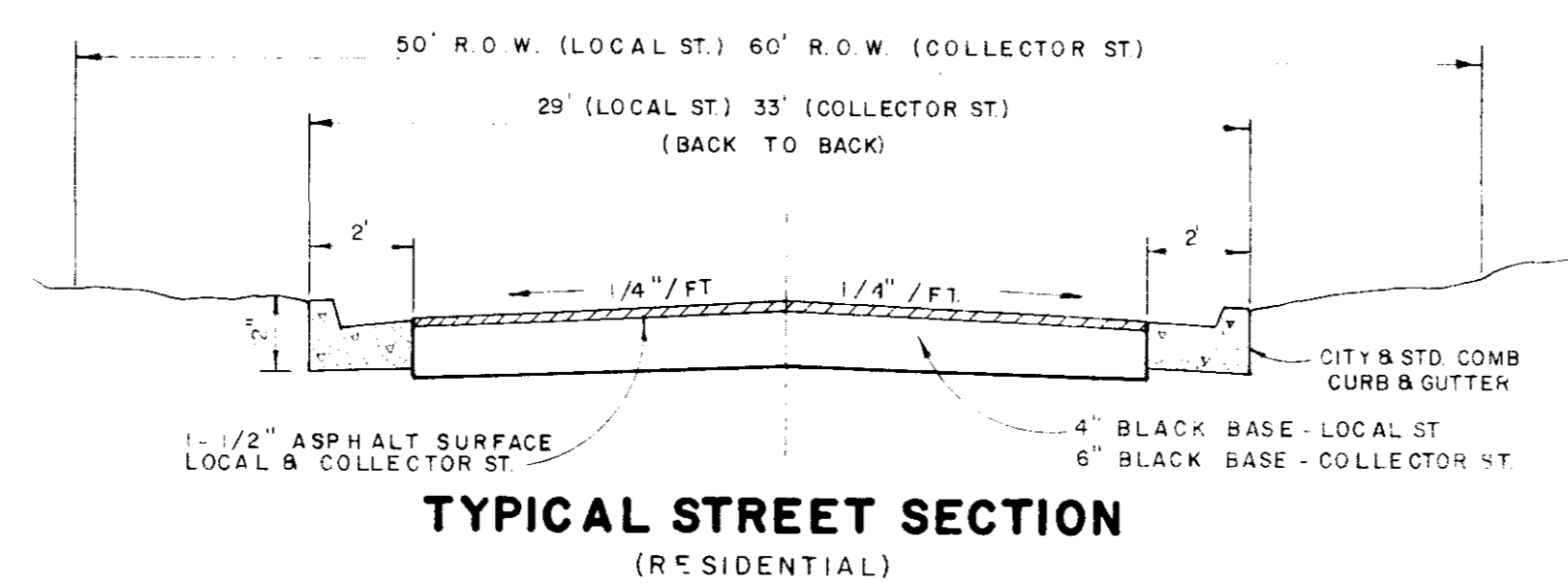
OCTOBER, 1988

Prepared By
Browning, Inc.
CONSULTING ENGINEERS - SURVEYORS
P. O. Box 12711
1058 Ridgewood Place
JACKSON, MISSISSIPPI 39228-2711

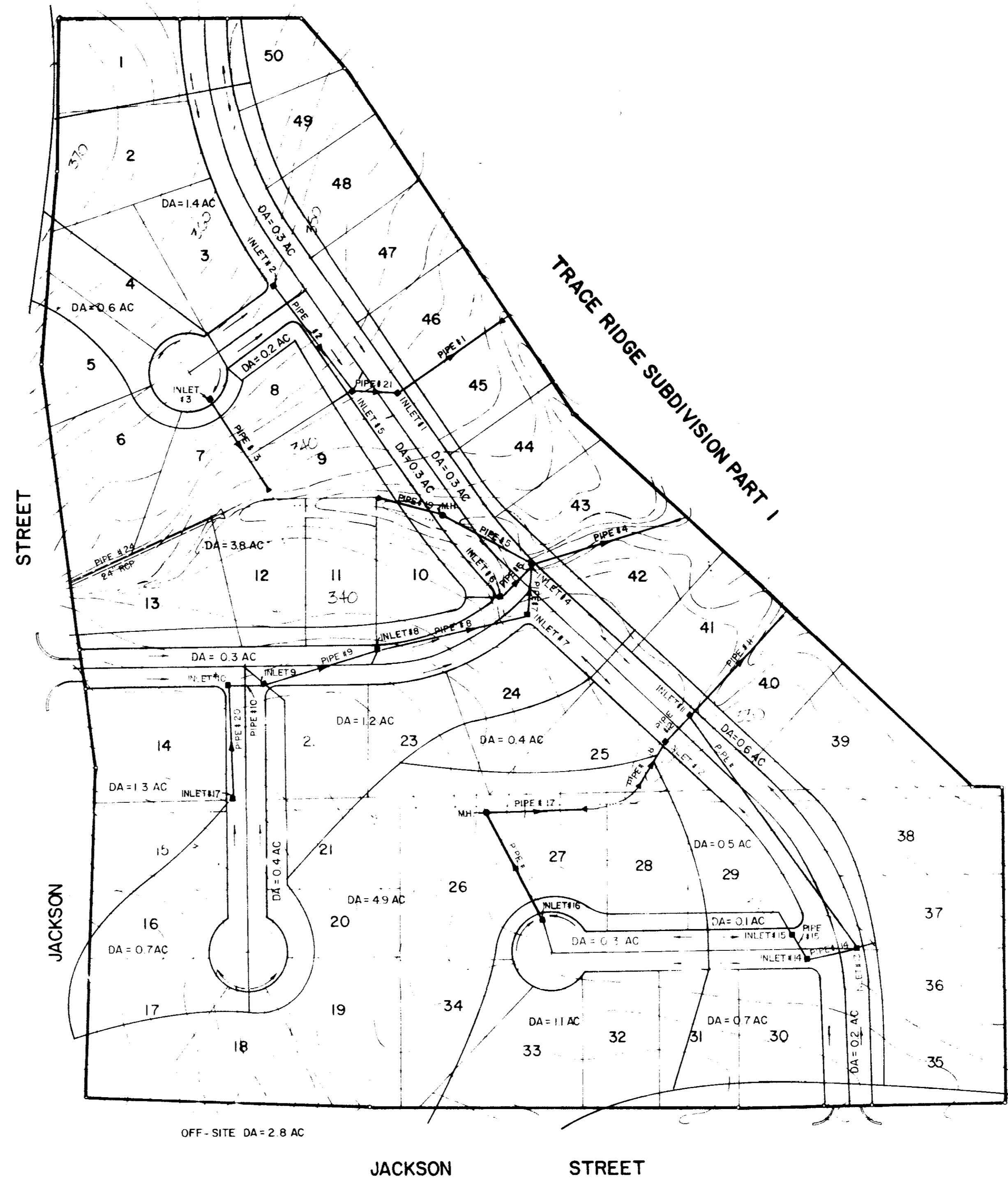
PWP-02012



TRACE RIDGE SUBDIVISION PART 2
(PROPOSED)

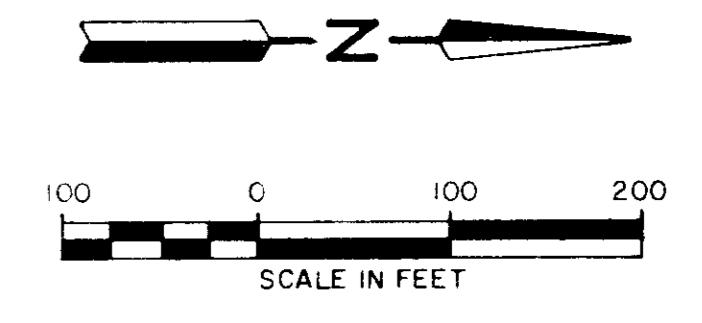


TRACE WOODS SUBDIVISION		
GENERAL LAYOUT		
BROWNING INC. Consulting Engineers Jackson, Mississippi		
Designed By: RLB	Scale: 1" = 100'	Sheet: 2 of 10
Drawn By: JF	Date: 04-11-89	



OFF-SITE DA = 7.1 AC

OFF-SITE DA = 2.8 AC



TRACE RIDGE SUBDIVISION PART 2
(PROPOSED)

TRACE WOODS SUBDIVISION			
DRAINAGE LAYOUT			
BROWNING INC.			
<small>Consulting Engineers Jackson, Mississippi</small>			
Designed By: PLB	Scale: 1" = 100'		
Drawn By: JF	Date: MARCH, 1988	Sheet 3 of 10	

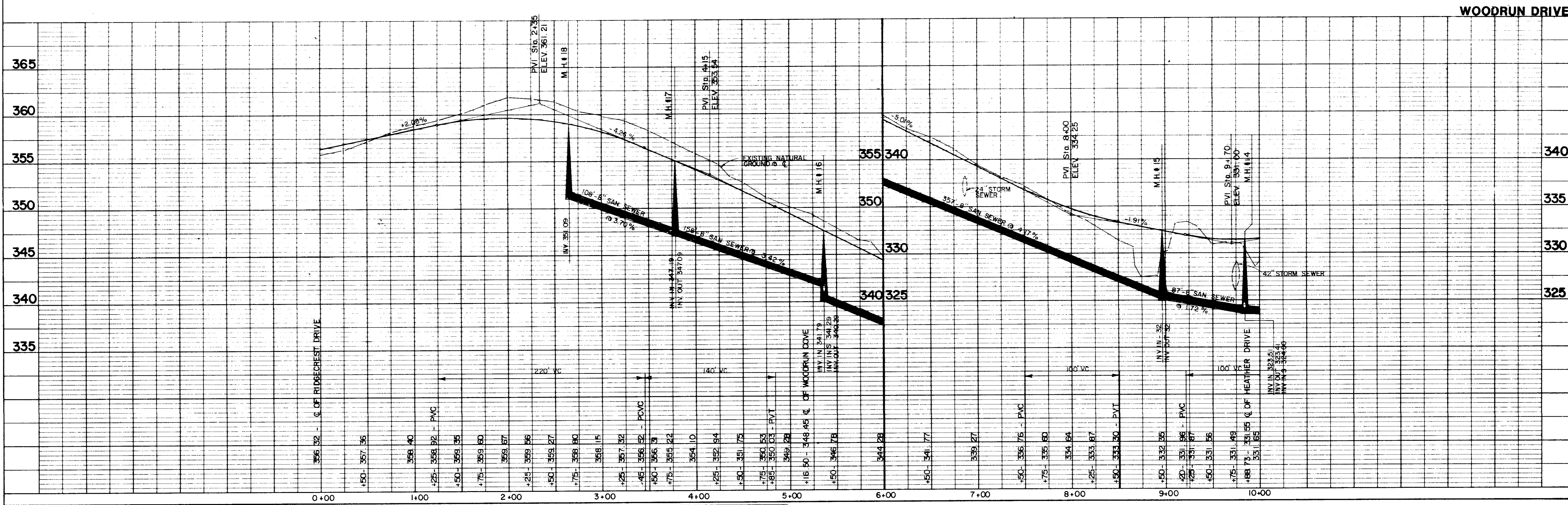
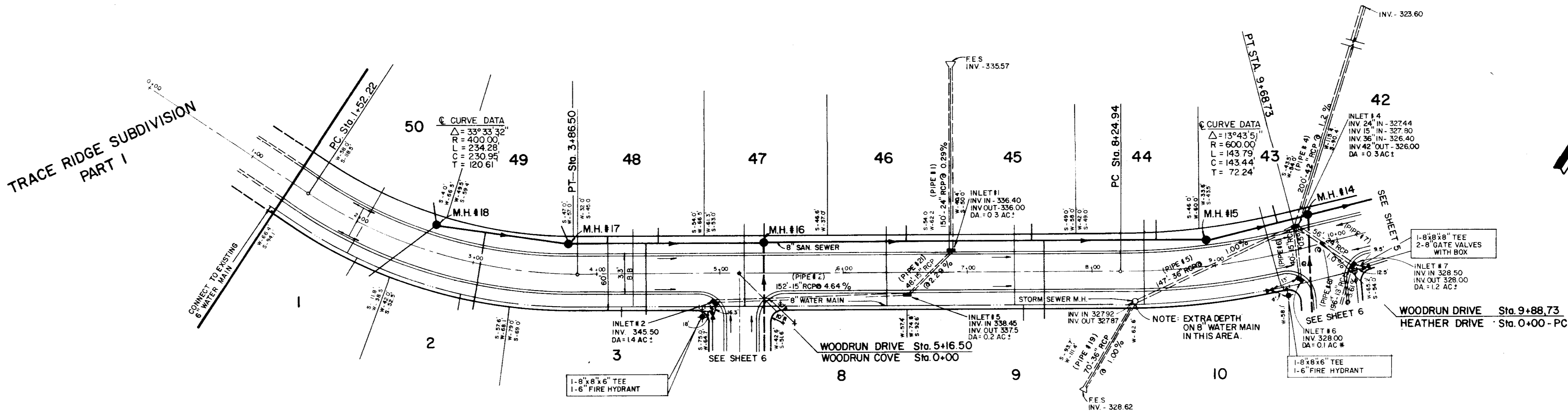
DATE	BY

PLAN
SUBMITTED BY
DATE
BY
NOTE BOOK NO. RT. OF WAY CHECKED.
NO. RT. OF WAY CHECKED.

DATE	BY

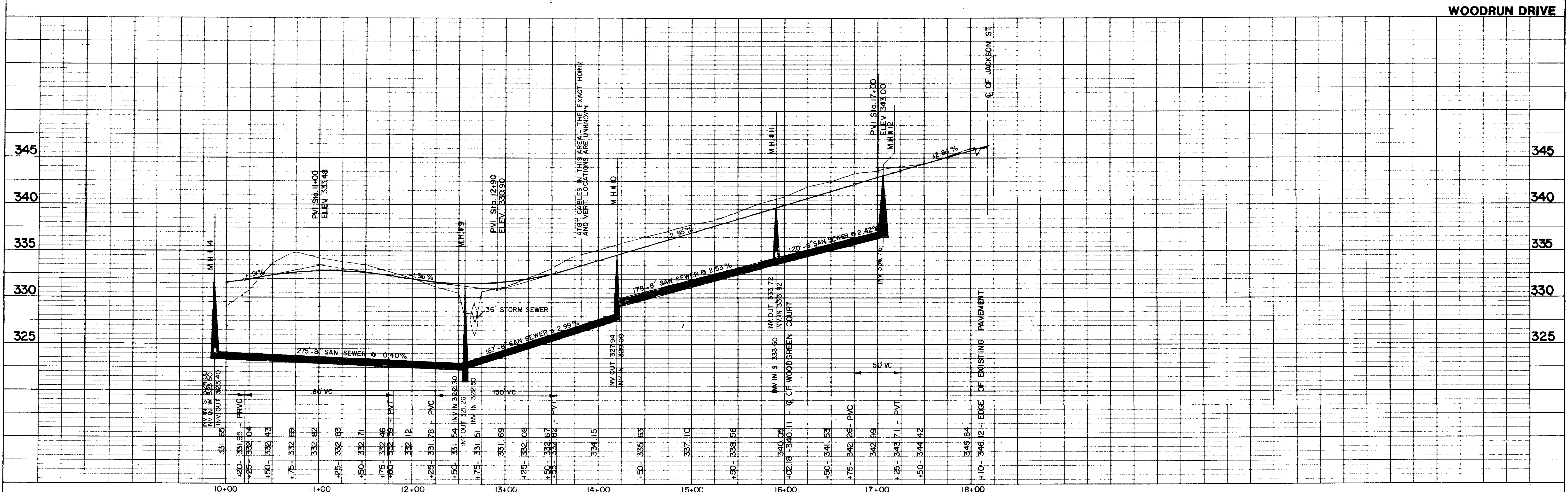
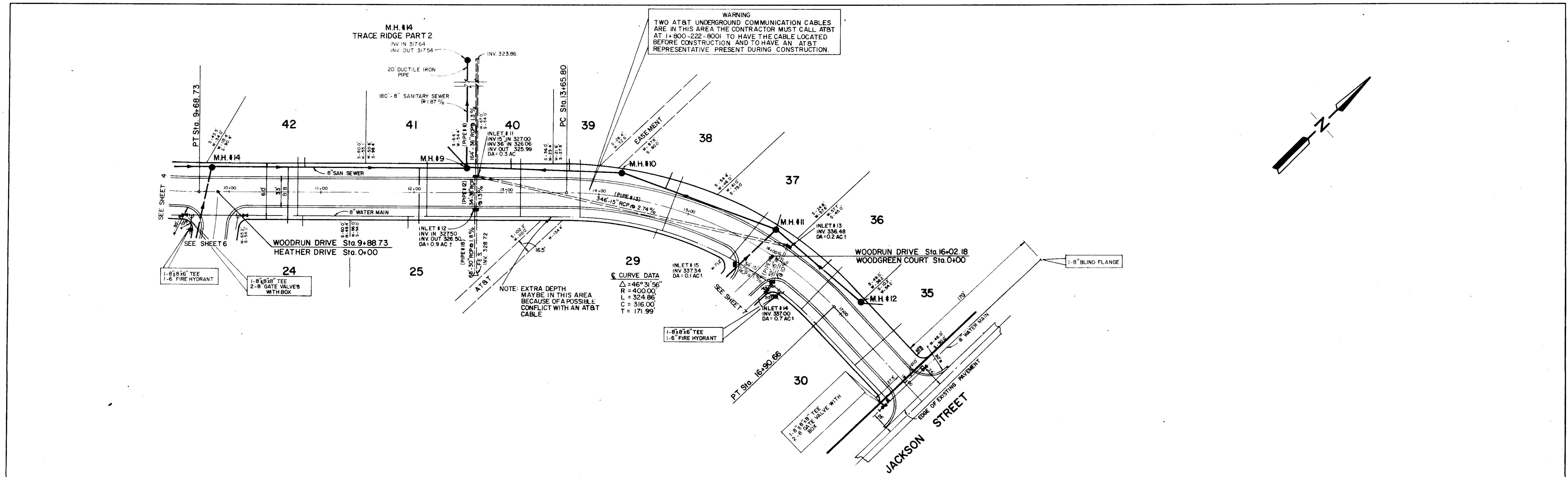
PROFILE
SUBMITTED BY
DATE
BY
NOTE BOOK NO. GRADES CHECKED.
NO. GRADES CHECKED.
STRUCTURE QUANTITIES CHECKED.

TRACE RIDGE SUBDIVISION PART I



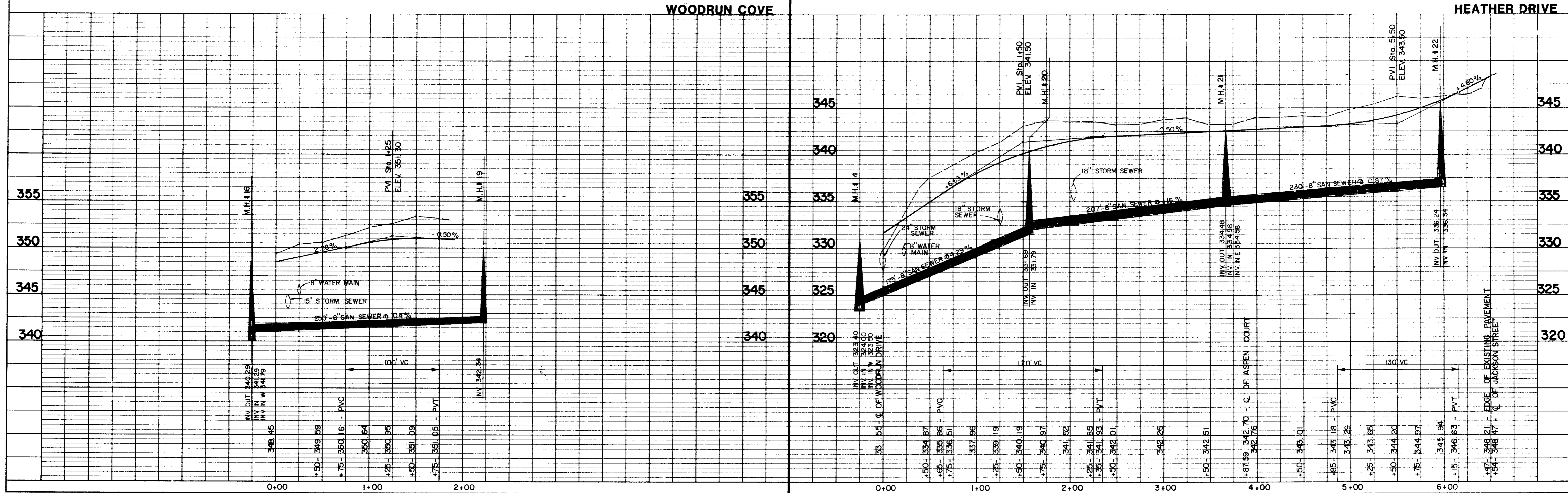
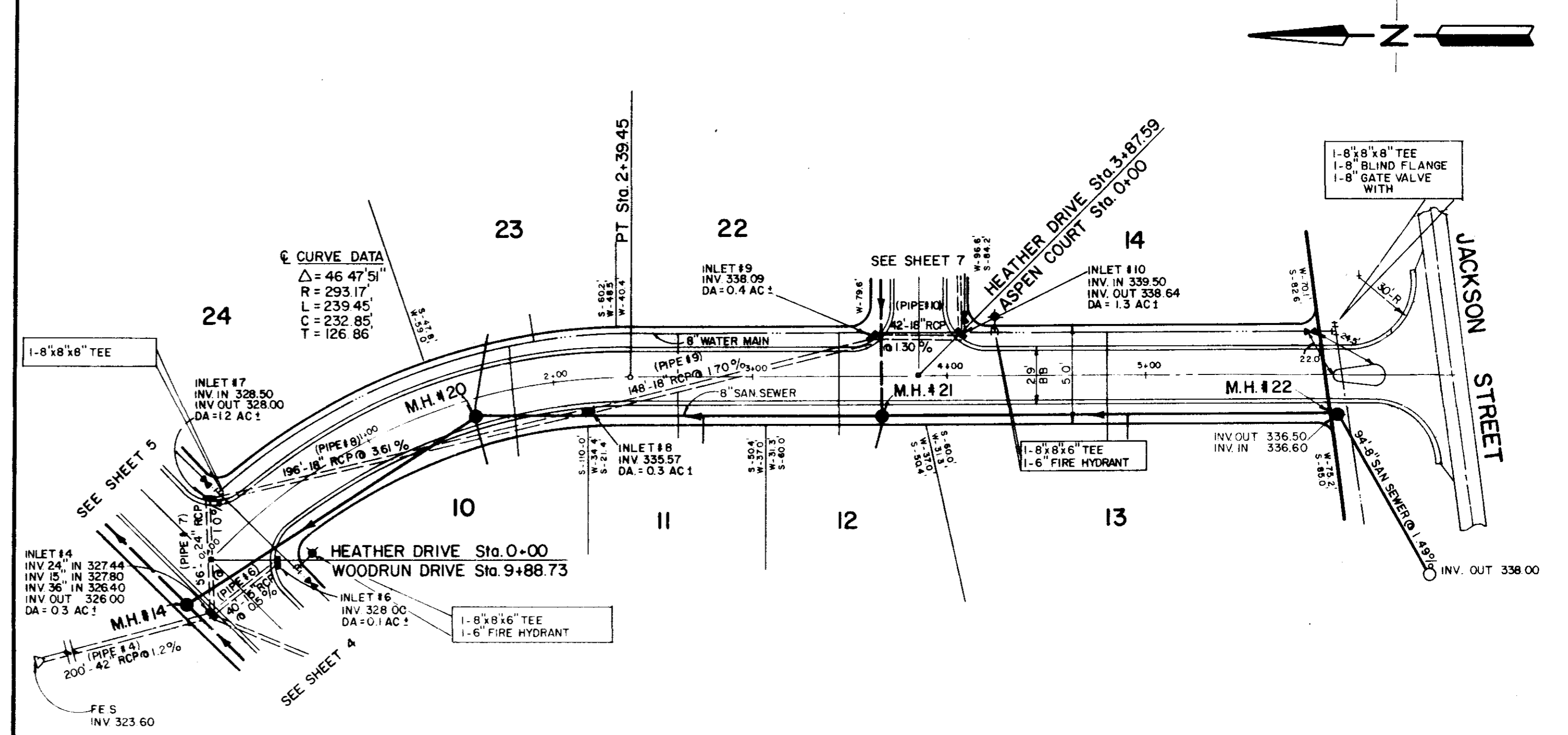
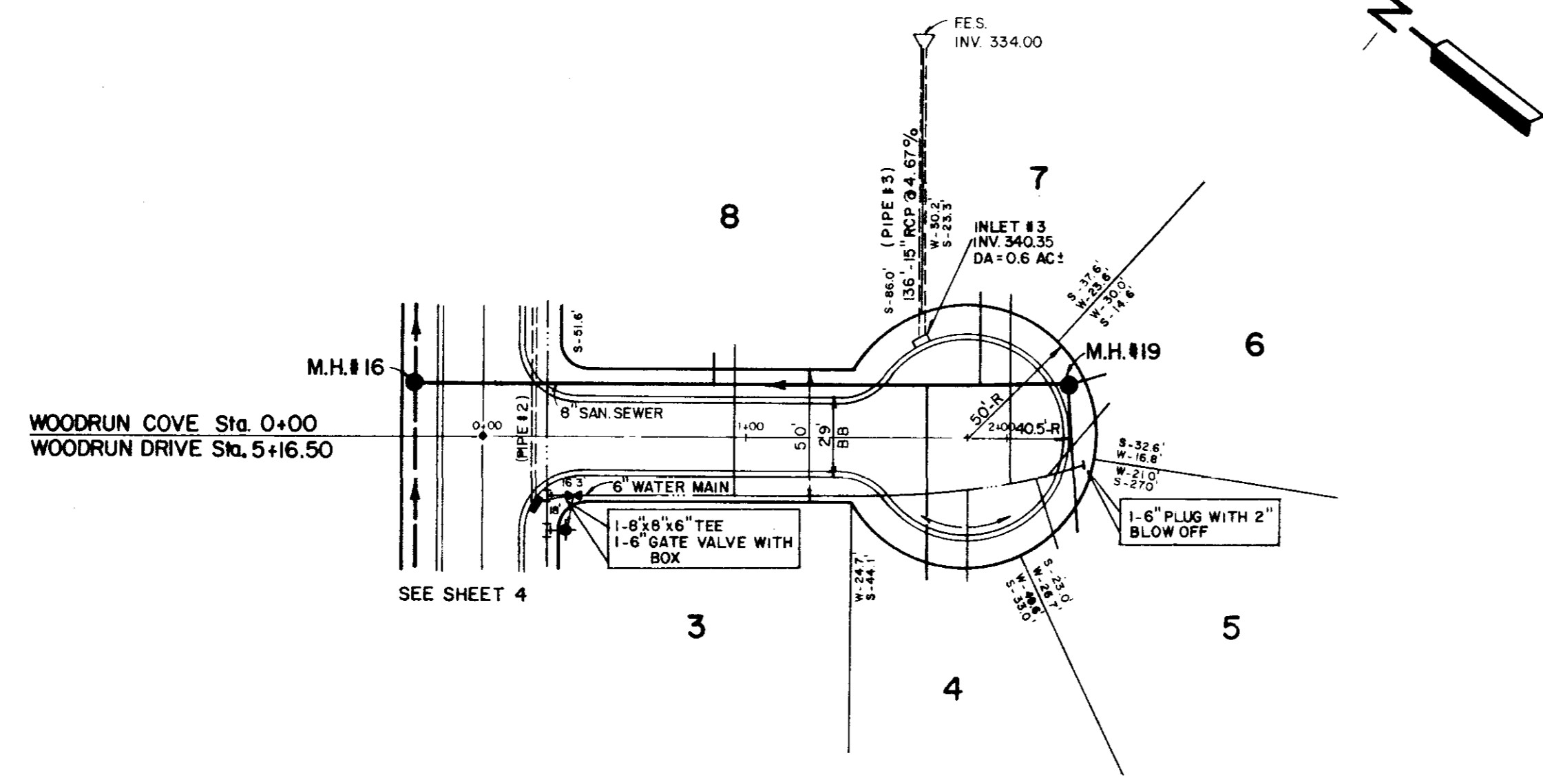
PLAN	SURVEYED	DATE
	PLOTTED	
	ALIGNMENT CHECKED	
	BY	
	NO.	

PROFILE	SURVEYED	DATE
	PLOTTED	
	STRUCTURE NOTATIONS CHECKED	
	BY	
	NO.	



PLAN	SURVEYED	BY	DATE
	PLOTTED		
	GRADES CHECKED		
	ALIGNMENT CHECKED		
	RT. OF WAY CHECKED		
	NO.		

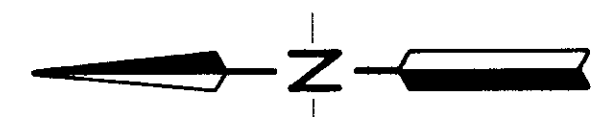
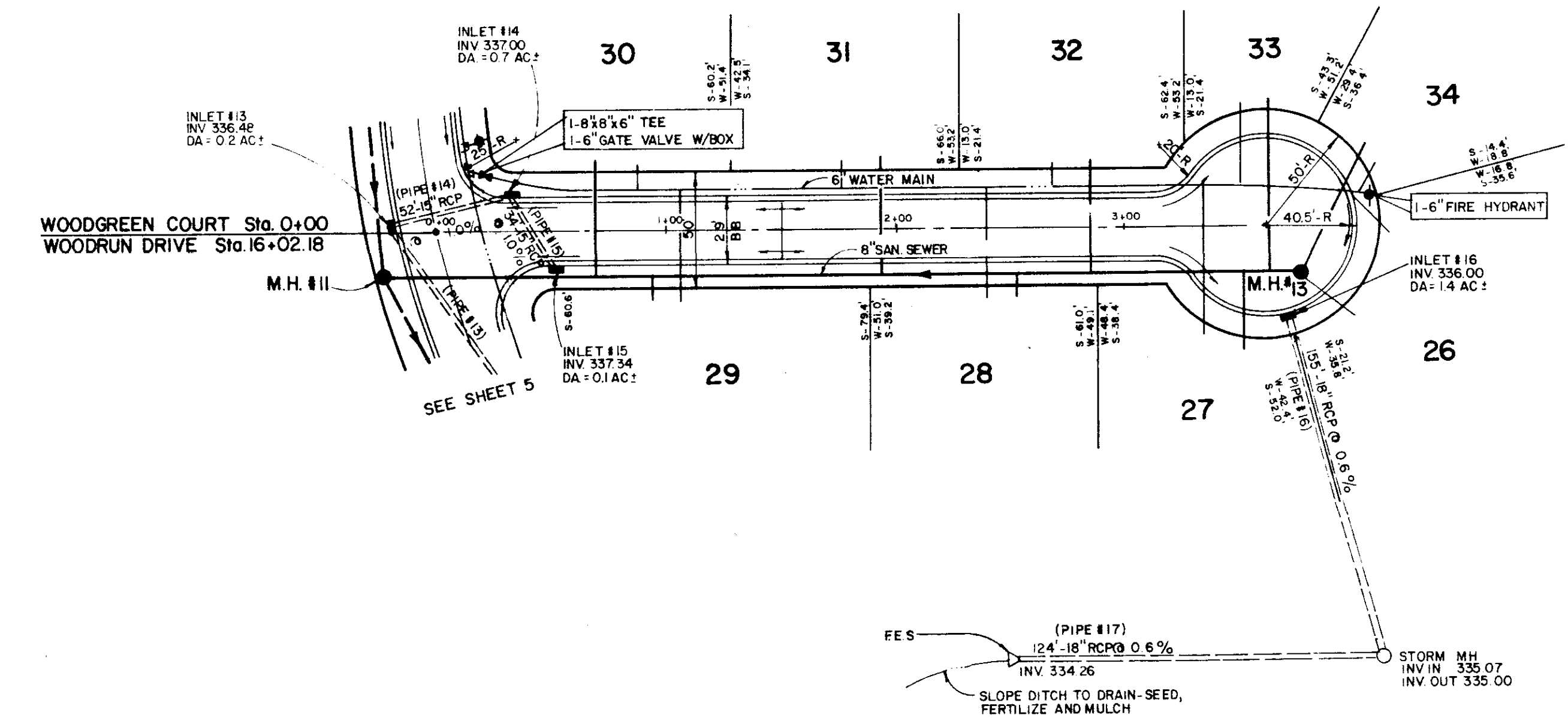
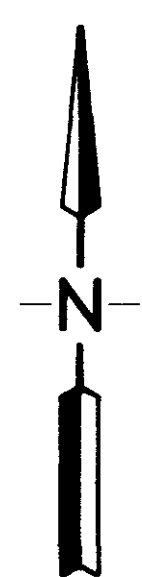
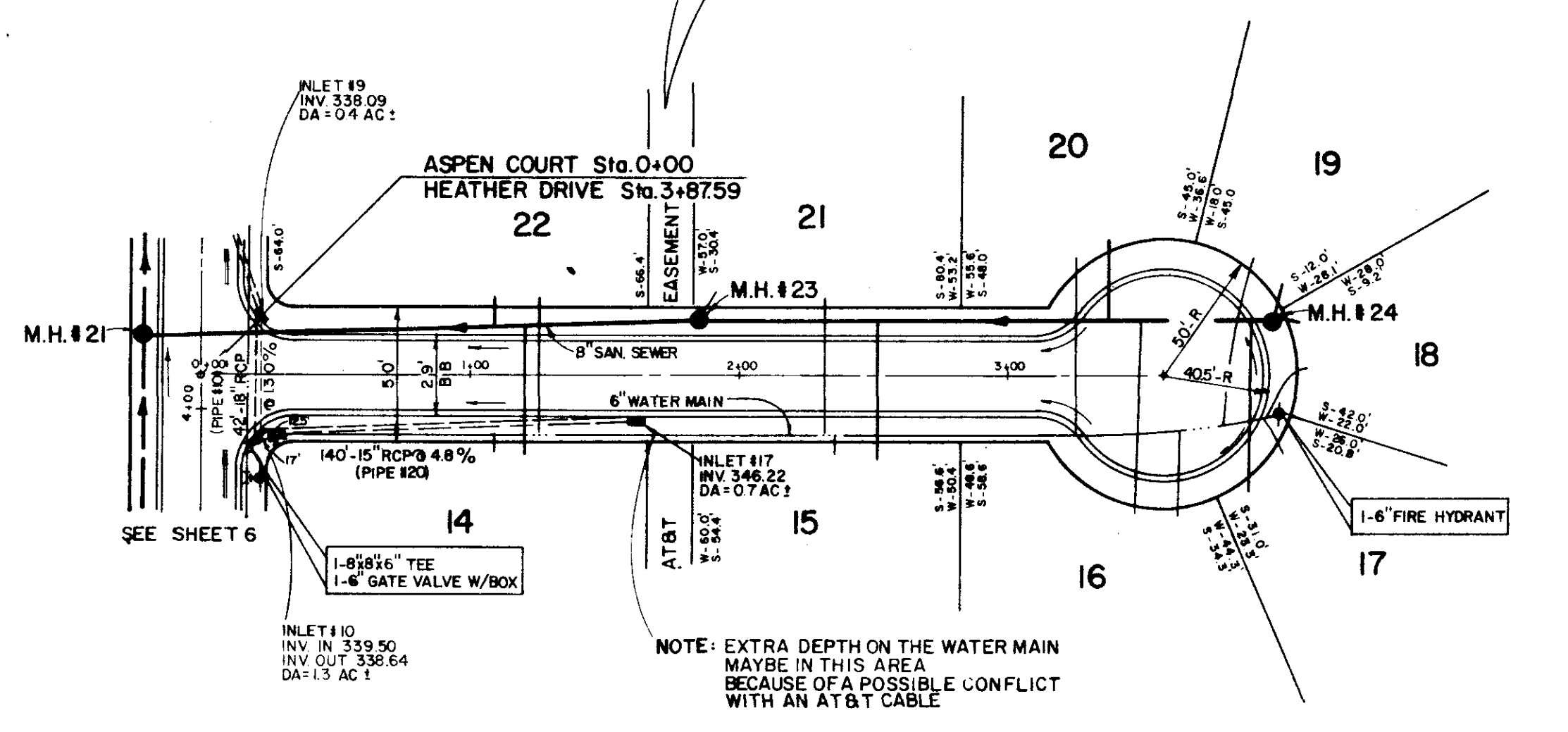
PROFILE	SURVEYED	BY	DATE
	PLOTTED		
	GRADES CHECKED		
	STRUCTURE NO. AT N.S. CH. PD.		
	NO.		



DATE	
BY	
SURVEYED	
NOTED	
ALIGNED	
CHECKED	
RT. OF WAY	
NO.	

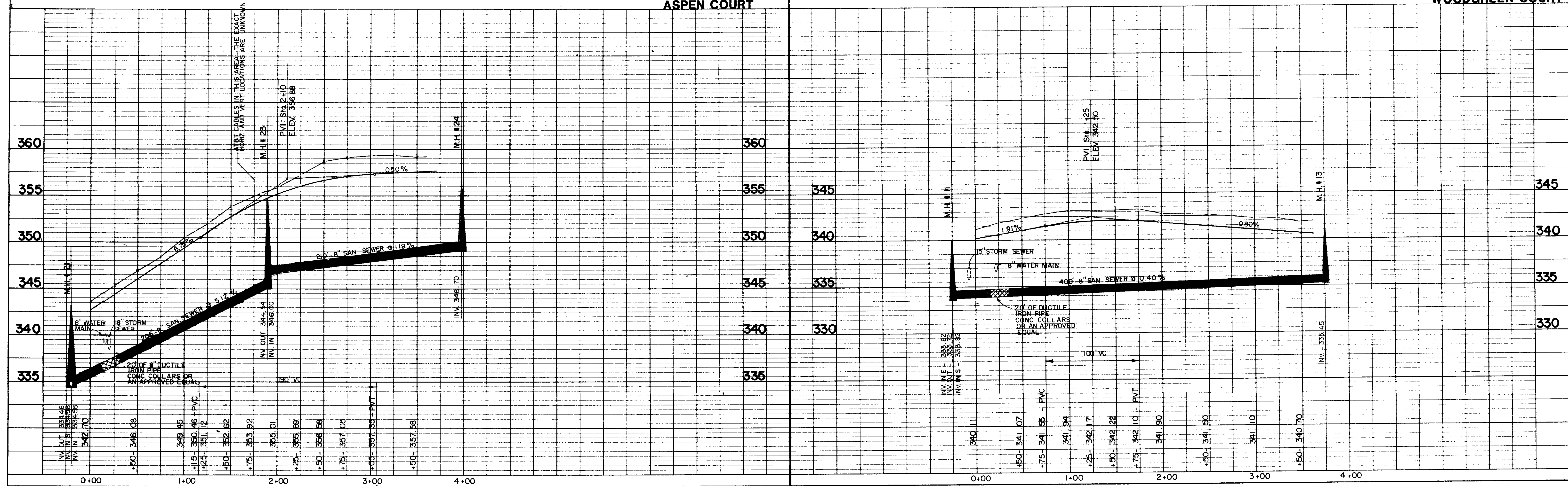
DATE	
BY	
GRADES	
NOTED	
CHECKED	
RT. OF WAY	
NO.	

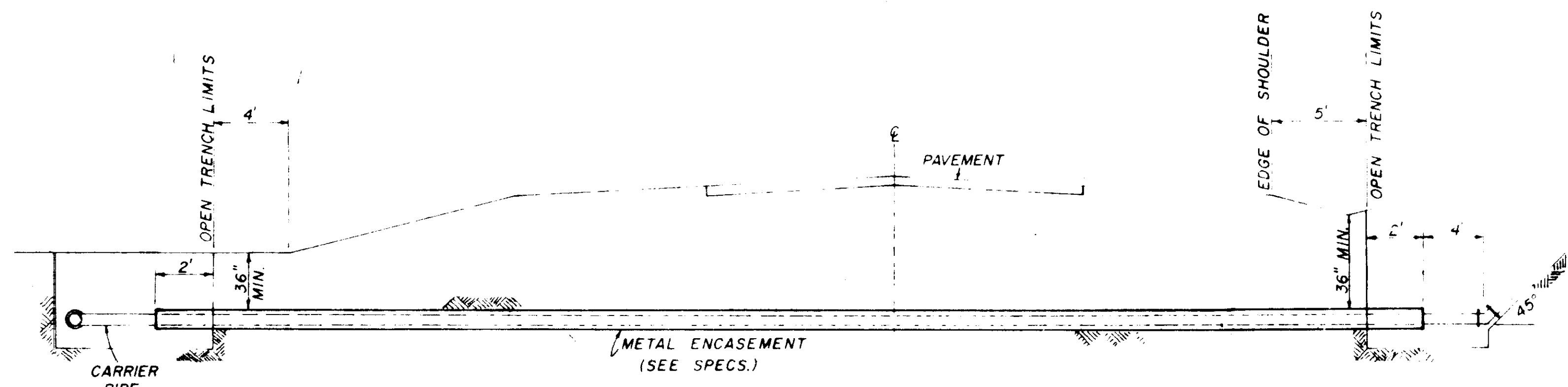
WARNING
TWO AT&T UNDERGROUND COMMUNICATION CABLES ARE IN THIS AREA. THE CONTRACTOR MUST CALL AT&T AT 1-800-222-8001 TO HAVE THE CABLE LOCATED BEFORE CONSTRUCTION AND TO HAVE AN AT&T REPRESENTATIVE PRESENT DURING CONSTRUCTION.



ASPEN COURT

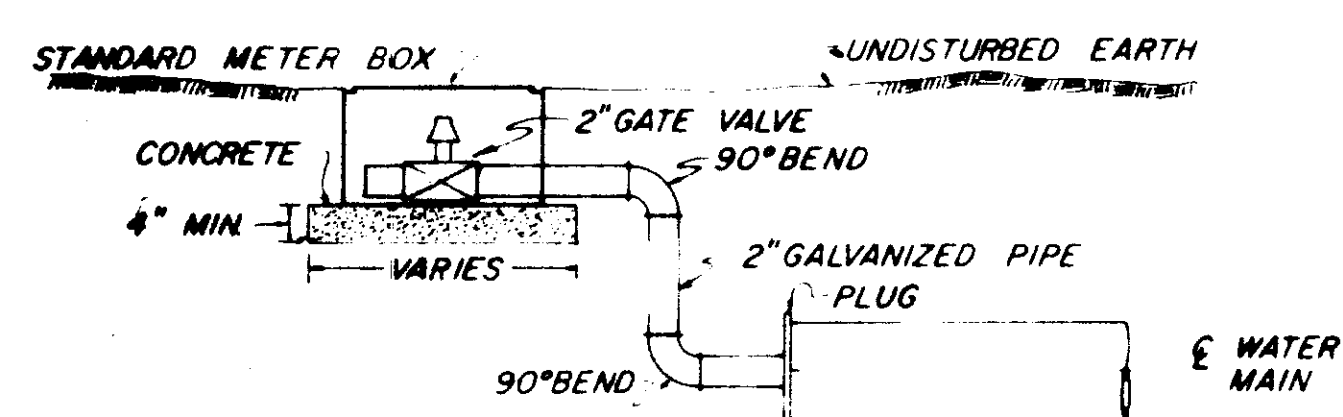
WOODGREEN COURT



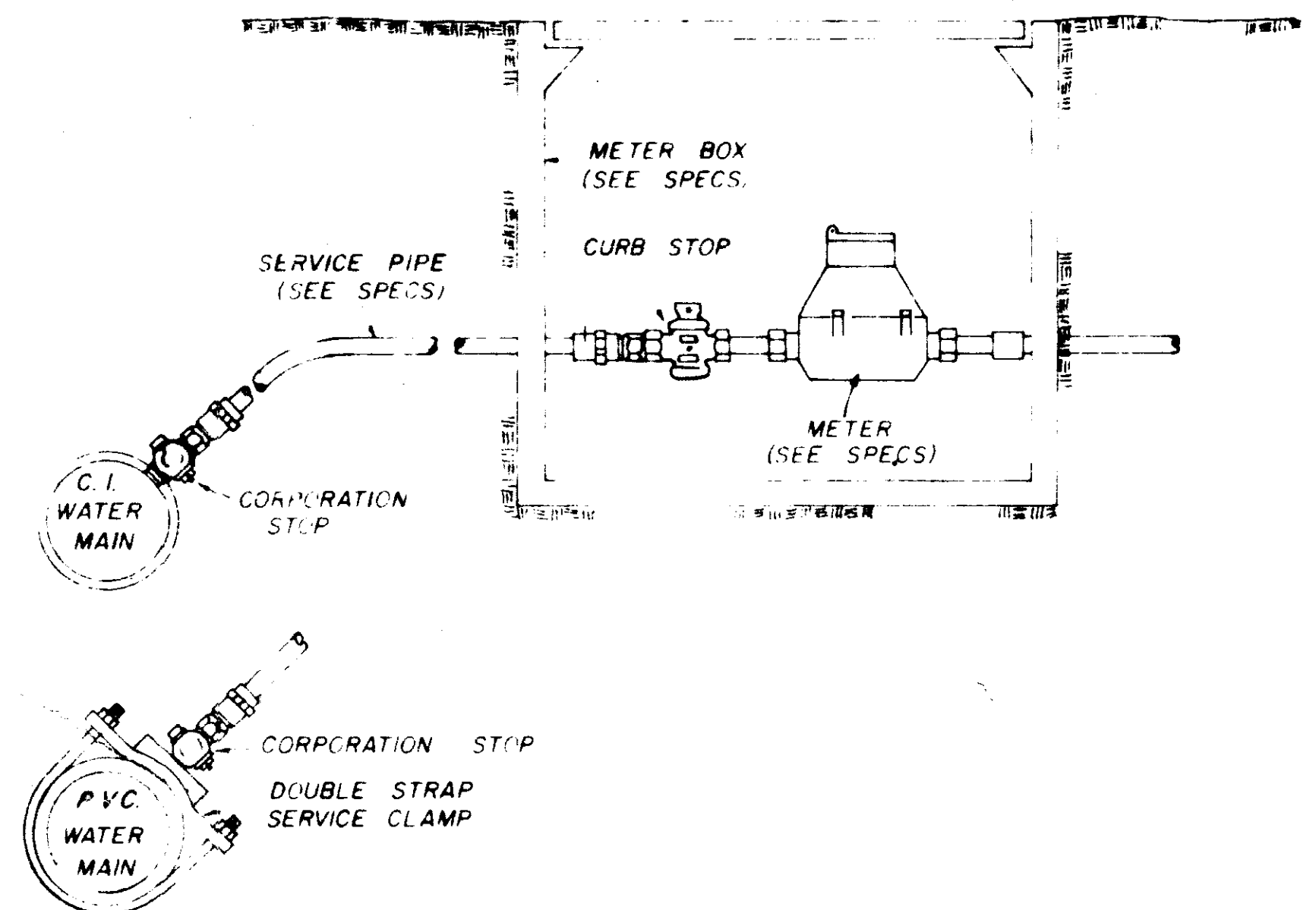


TYPICAL CASSED CROSSING

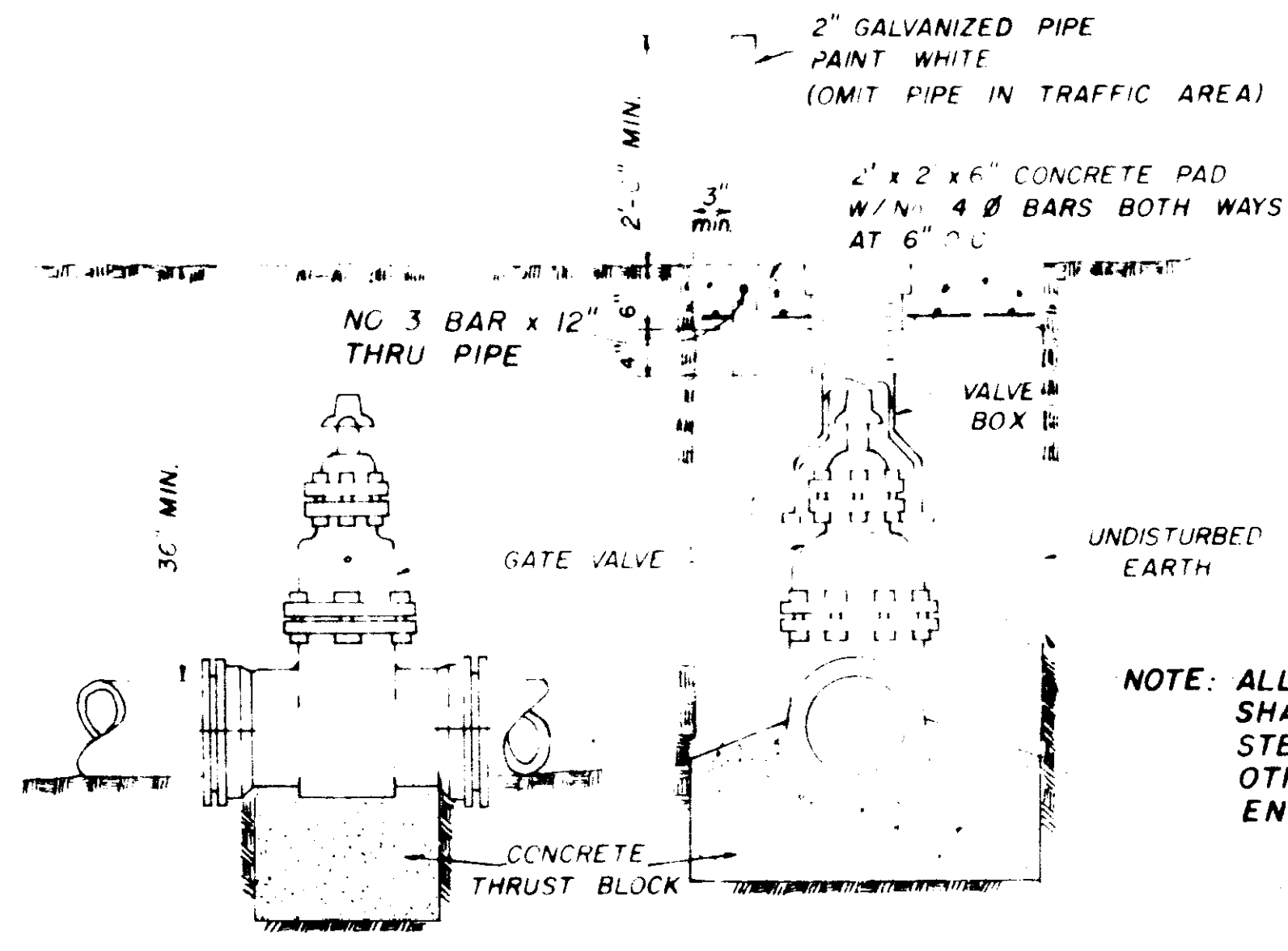
NOTE: COMPENSATION FOR CONCRETE THRUST BLOCKS SHALL BE INCLUDED IN THE UNIT PRICE BID FOR VALVES, FIRE HYDRANTS AND FITTINGS.



TYPICAL 2" BLOW-OFF DETAIL



TYPICAL SERVICE ASSEMBLY

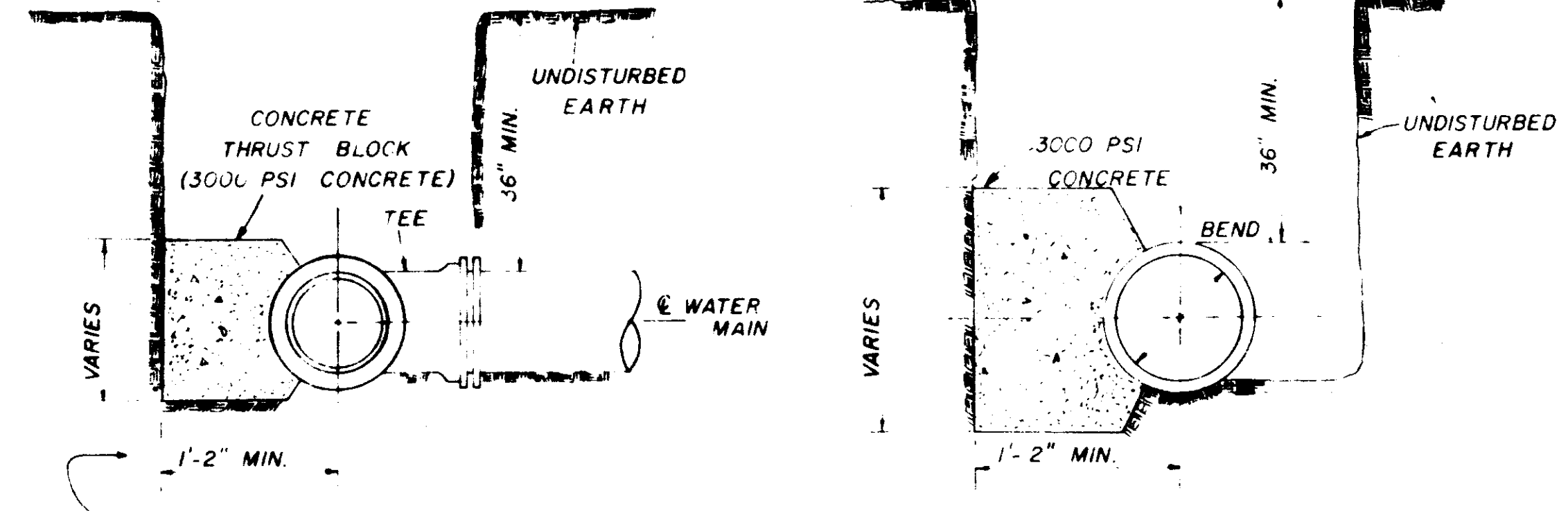


ELEVATION SECTION

TYPICAL VALVE & BOX

NOTE: ALL WATER MAIN CONNECTIONS SHALL BE RODDED WITH ALL STEEL RODS (3/4" MIN.) UNLESS OTHERWISE INSTRUCTED BY ENGINEER.

SECTION



PLAN

PLAN

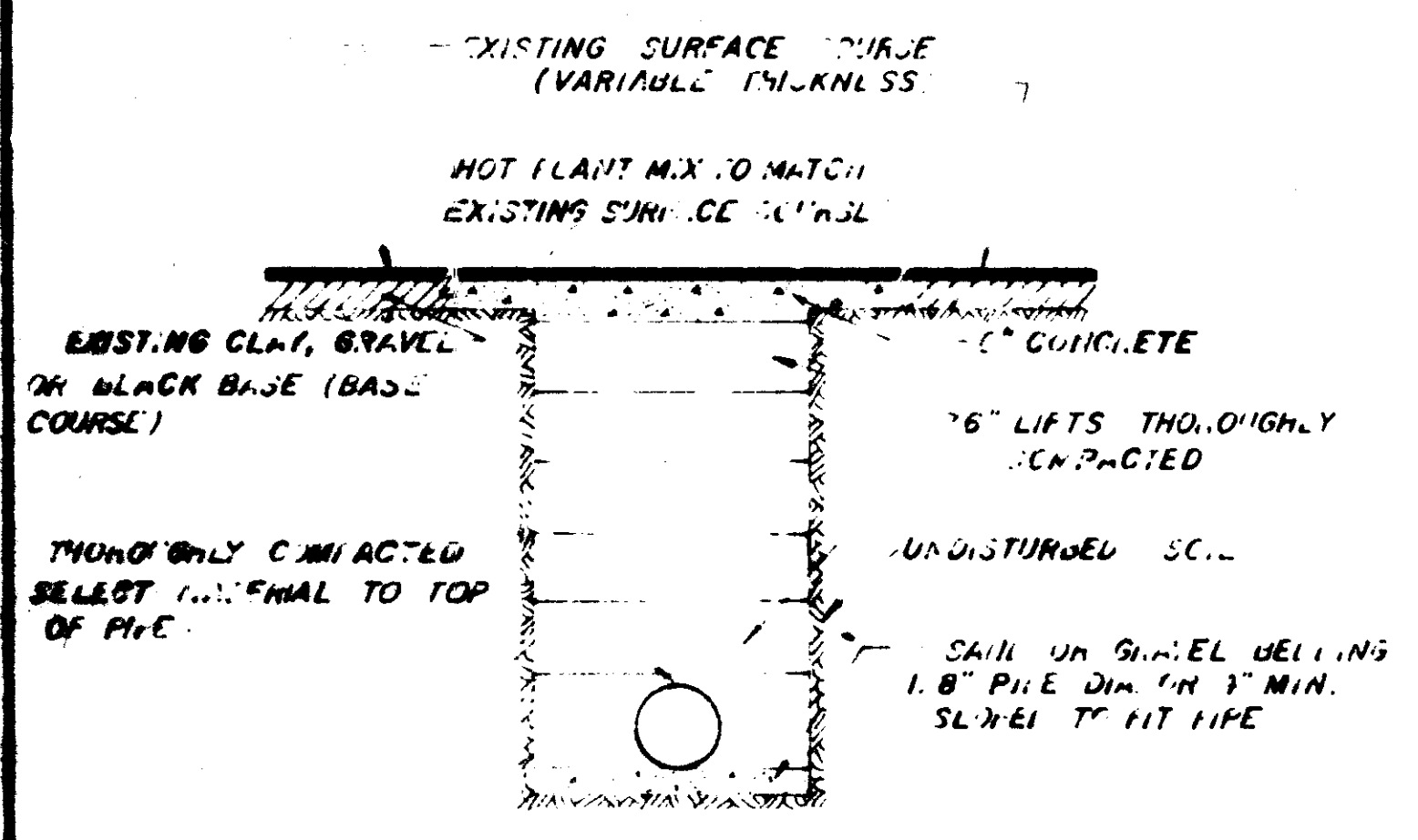
SECTION

SECTION

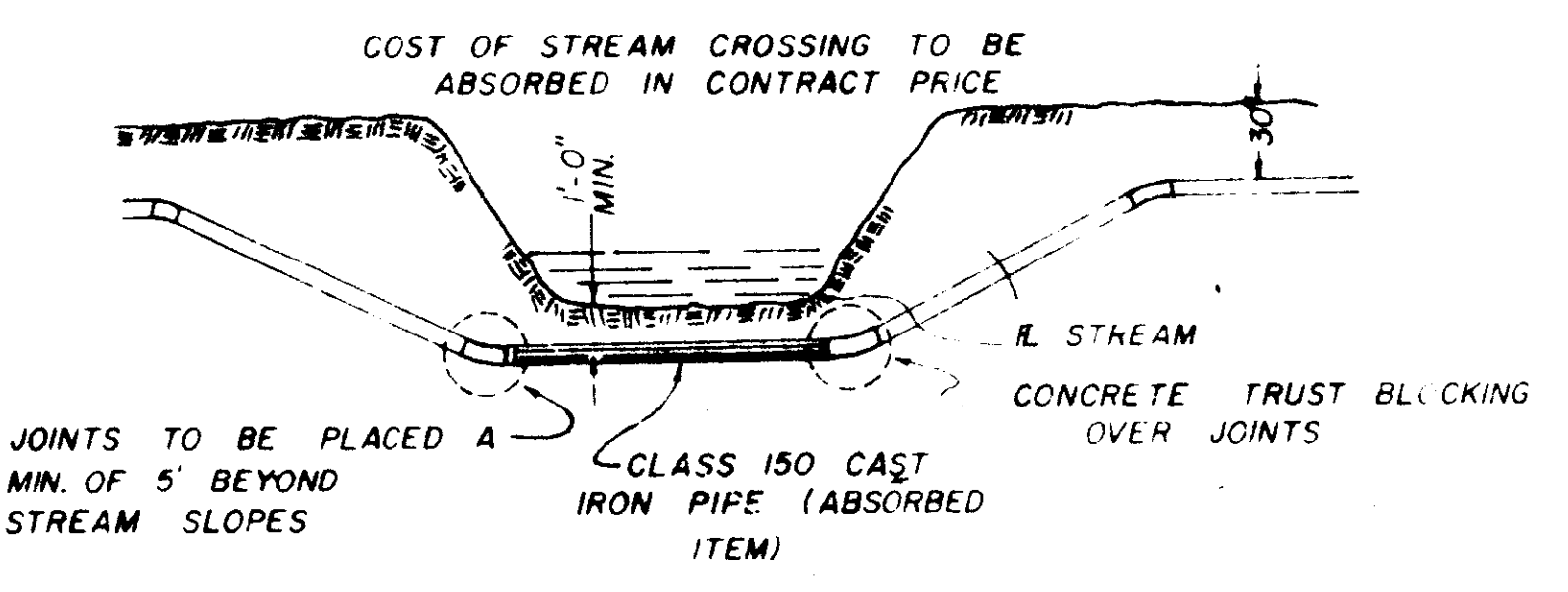
BLOCKING DETAILS FOR TEES & BENDS

PIPE SIZE	1/4 BEND	1/8 BEND	PLUGS & TEES
4-6	3	3	3
8	3	3	3
10	4	3	4
12	6	3	4
16	11	4	7

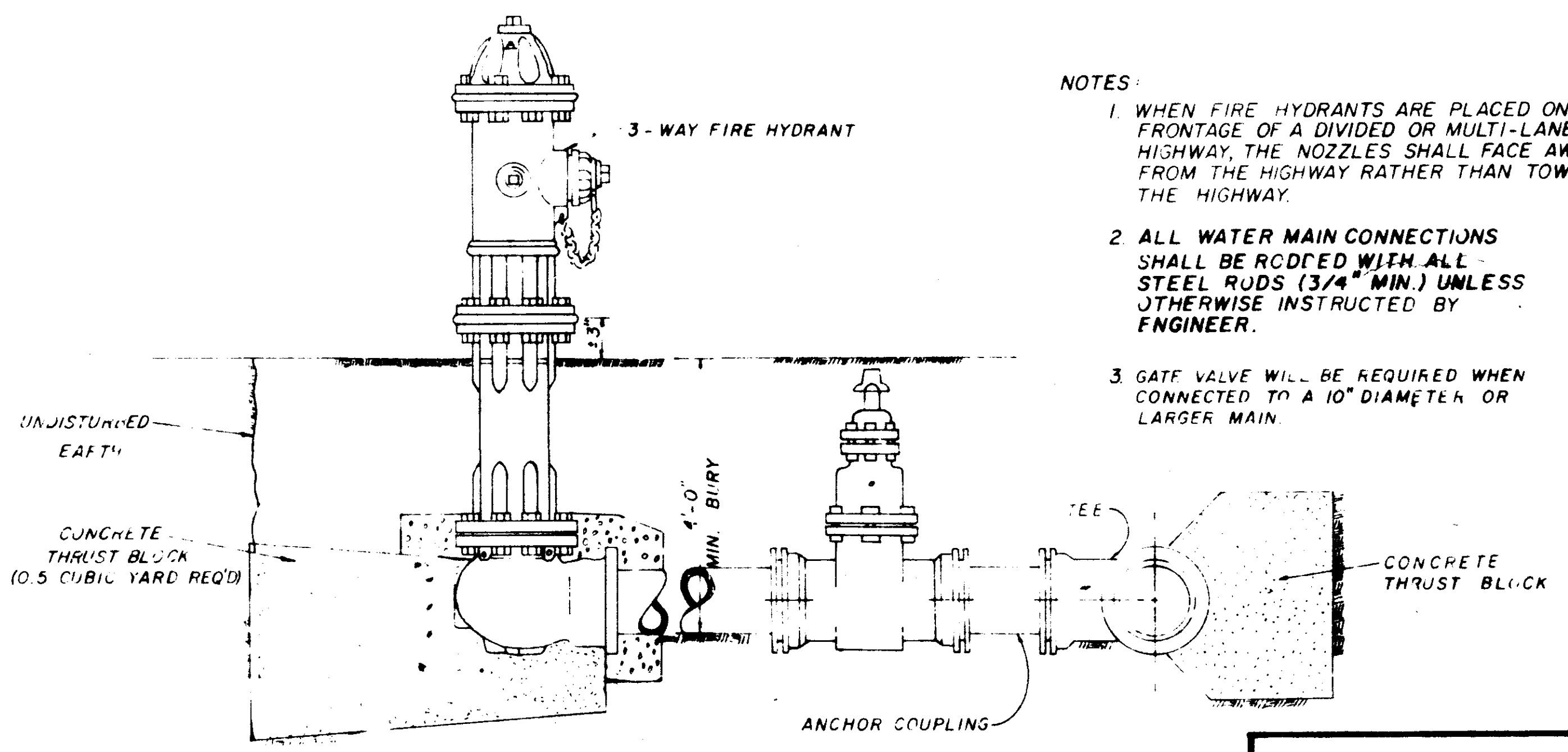
NOTE: AREA OF HEARING FACE IN SQUARE FEET.



STREET REPAIR OF OPEN CUT



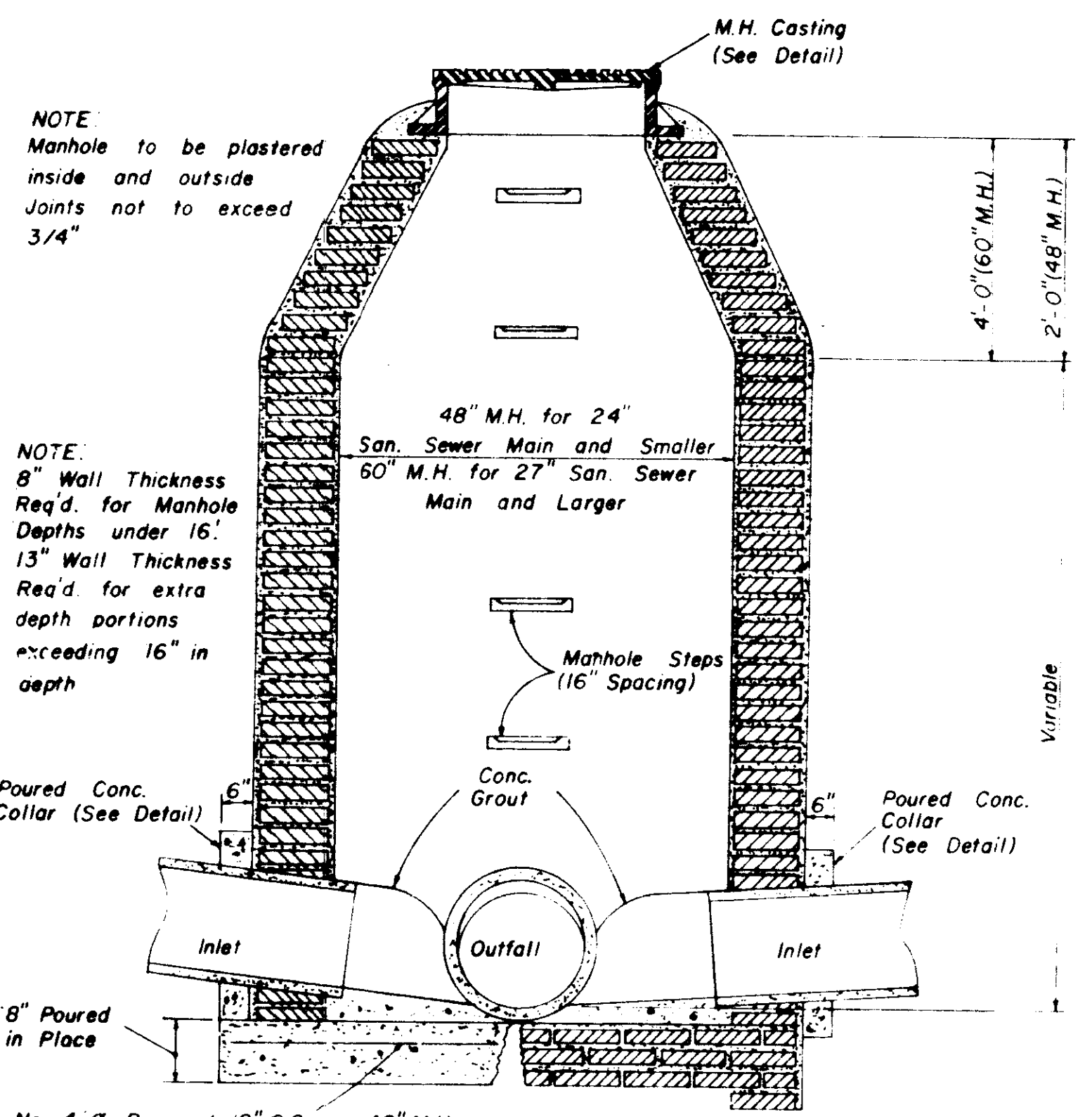
TYPICAL STREAM CROSSING



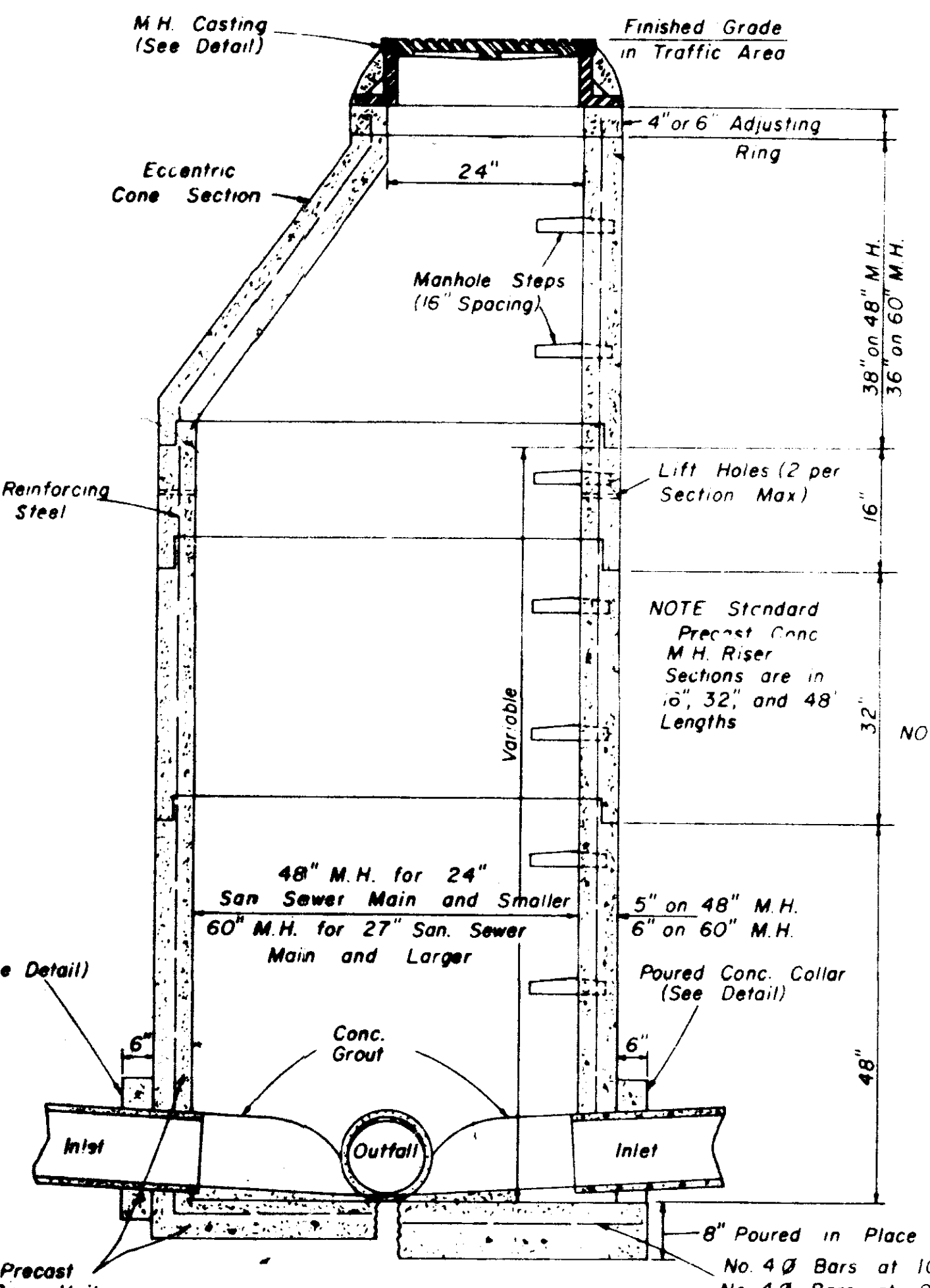
TYPICAL FIRE HYDRANT

- NOTES:
1. WHEN FIRE HYDRANTS ARE PLACED ON THE FRONTAGE OF A DIVIDED OR MULTI-LANE HIGHWAY, THE NOZZLES SHALL FACE AWAY FROM THE HIGHWAY RATHER THAN TOWARD THE HIGHWAY.
 2. ALL WATER MAIN CONNECTIONS SHALL BE RODDED WITH ALL STEEL RODS (3/4" MIN.) UNLESS OTHERWISE INSTRUCTED BY ENGINEER.
 3. GATE VALVE WILL BE REQUIRED WHEN CONNECTED TO A 10" DIAMETER OR LARGER MAIN.

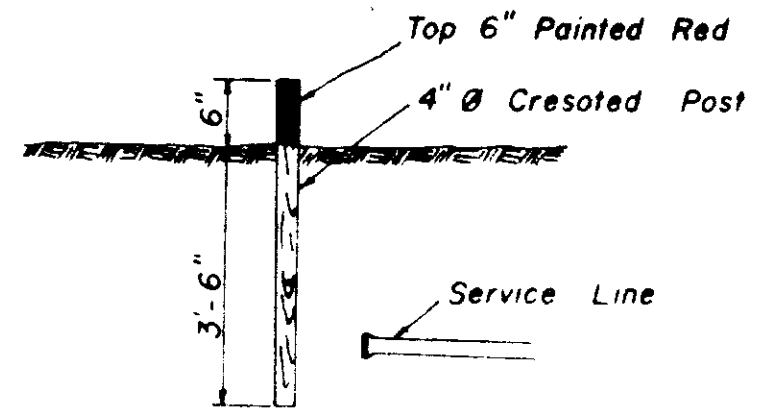
WATER SYSTEM STANDARD DETAILS



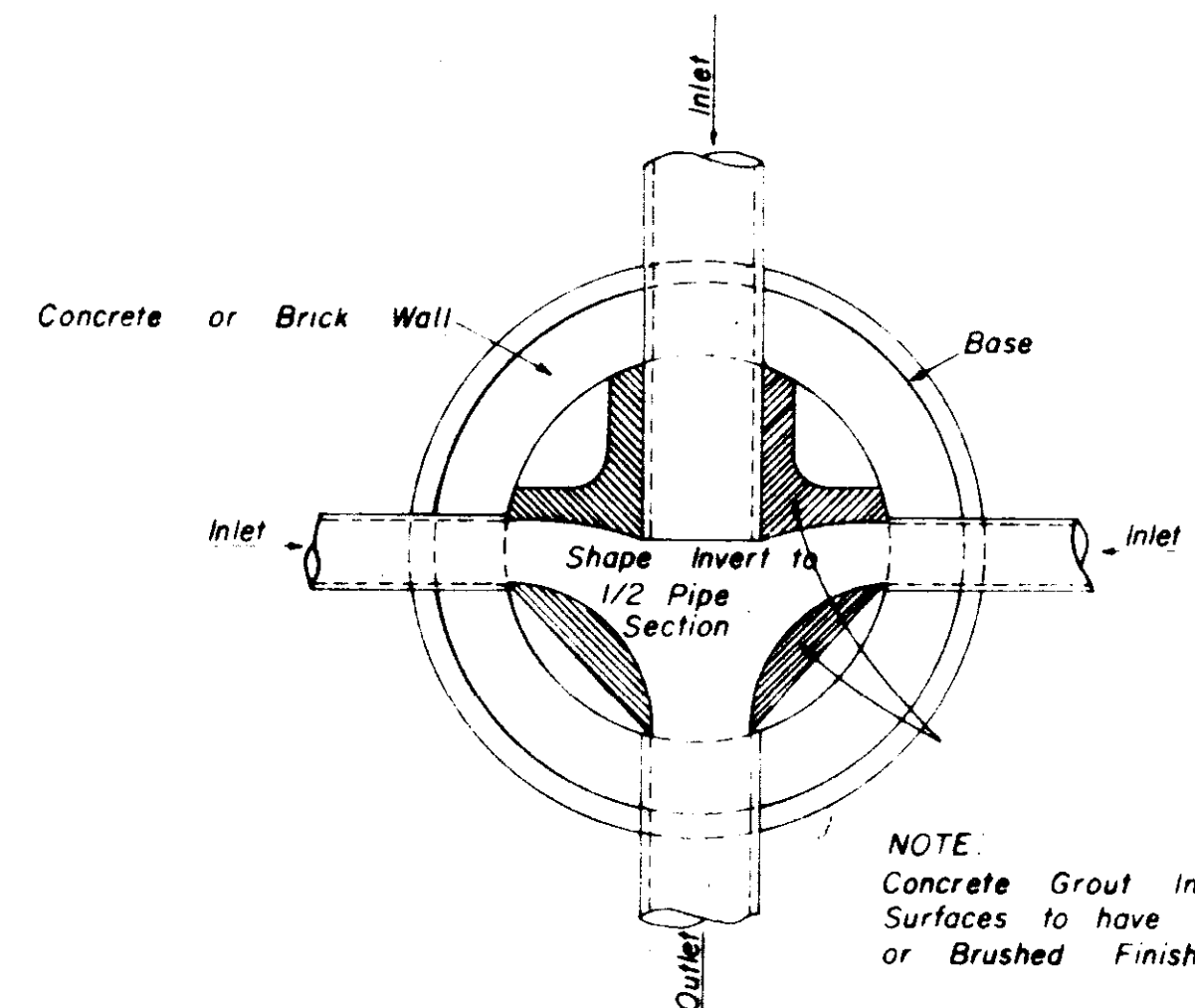
**SECTION
STANDARD BRICK MANHOLE**



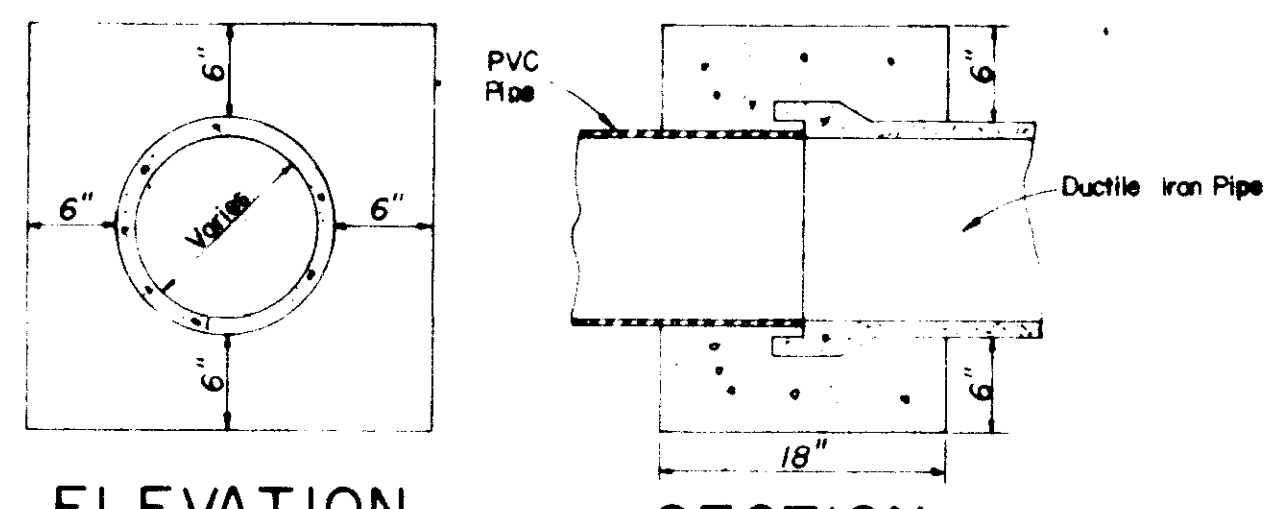
**SECTION
PRECAST CONCRETE MANHOLE**



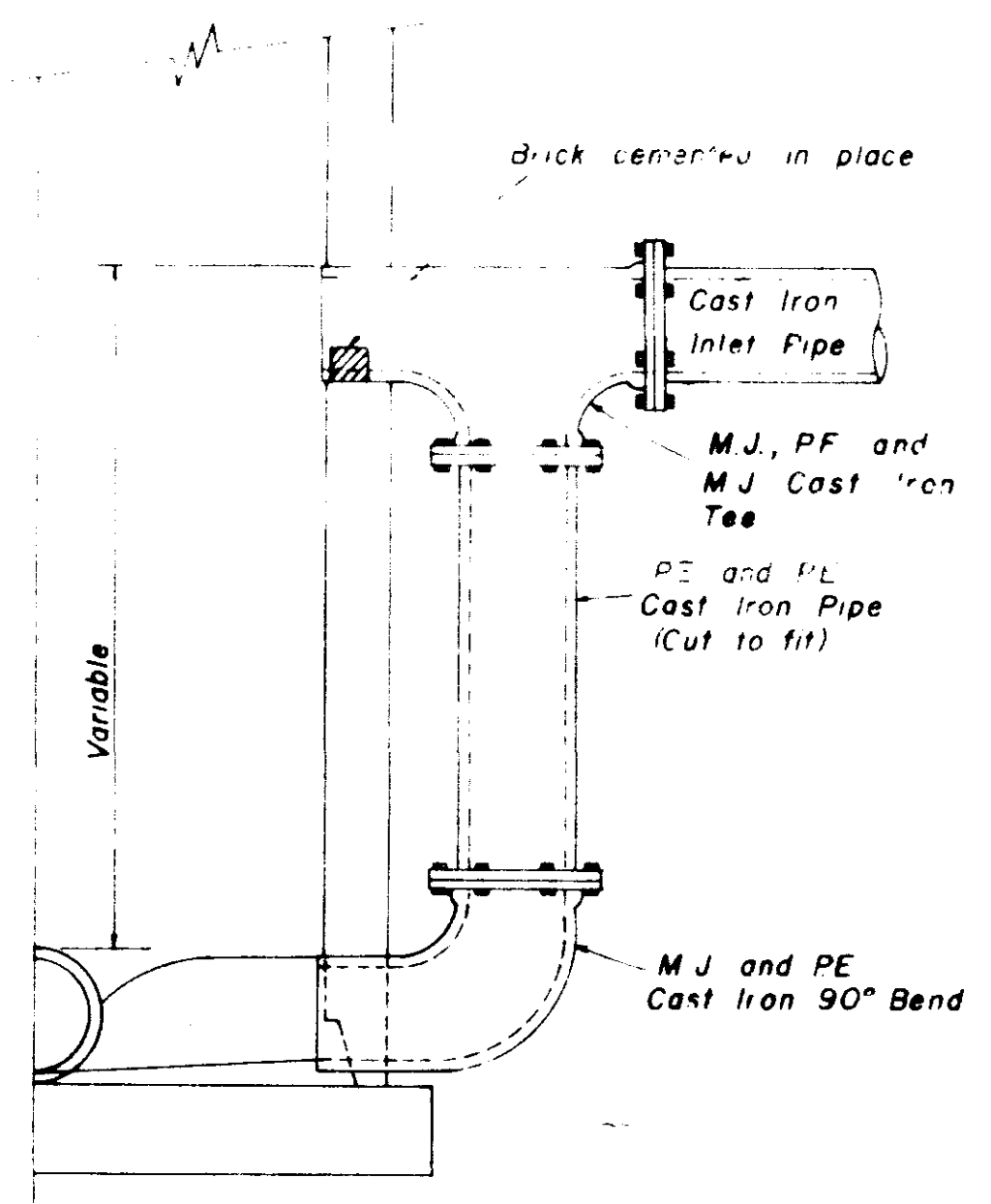
SEWER SERVICE MARKER



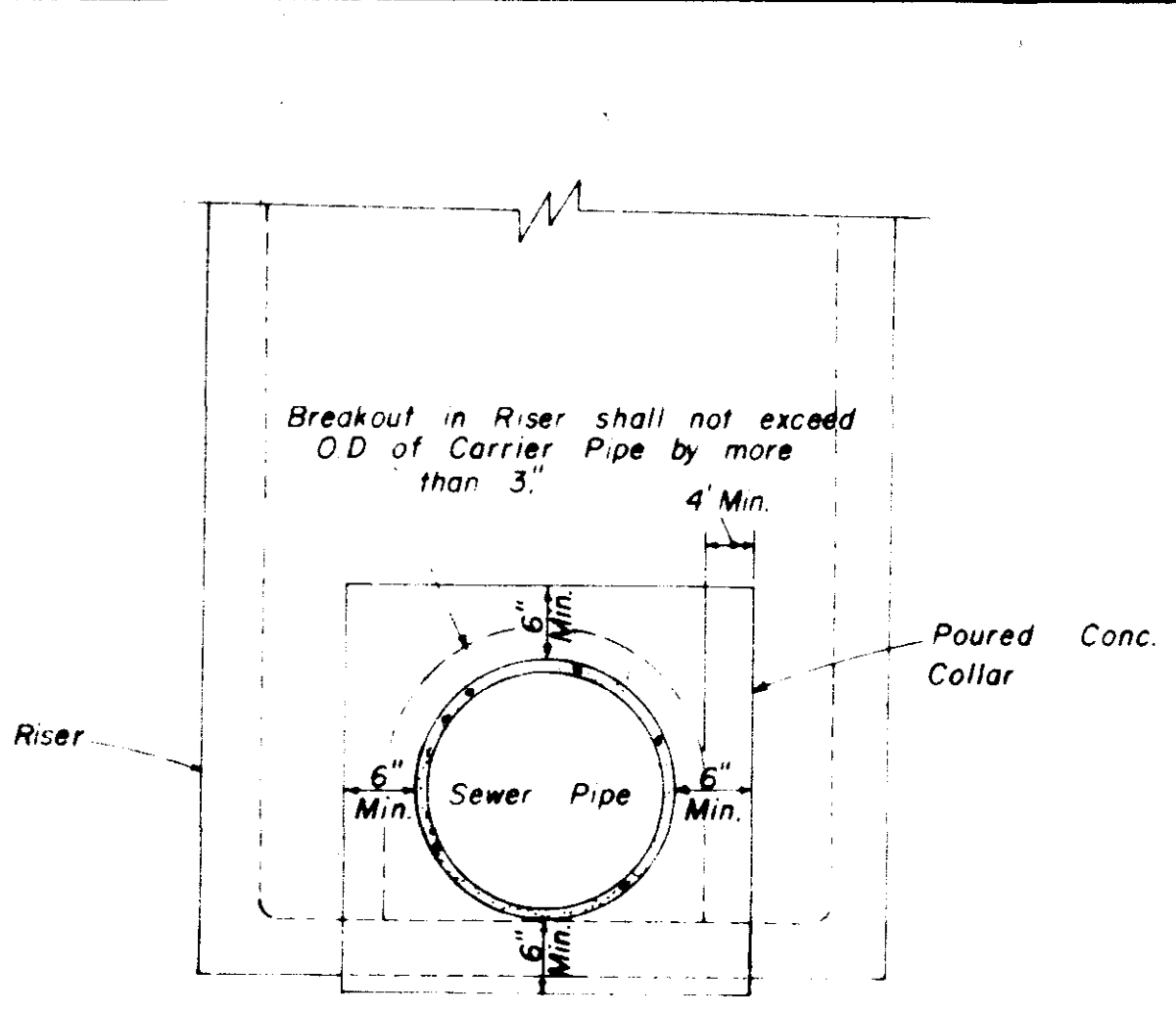
**PLAN OF MANHOLE
FLOW CHANNELS**



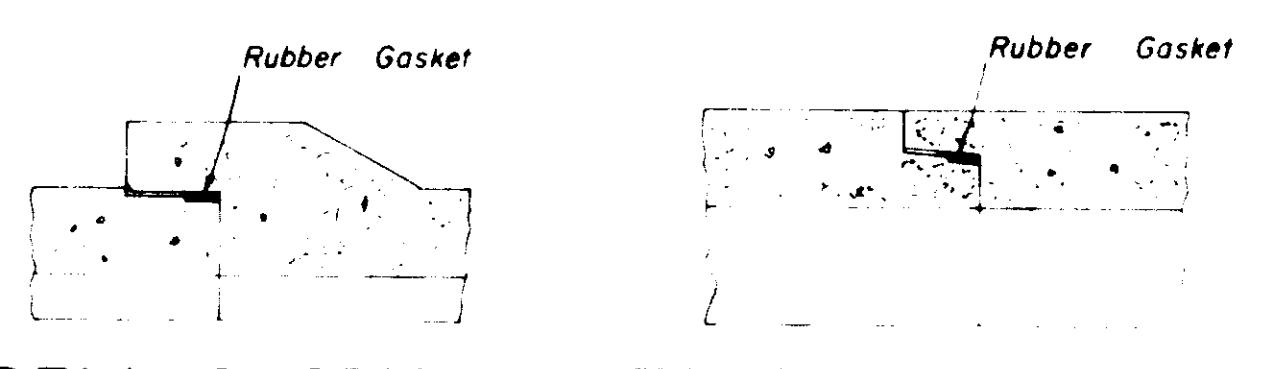
**ELEVATION SECTION
CONCRETE COLLAR DETAILS**



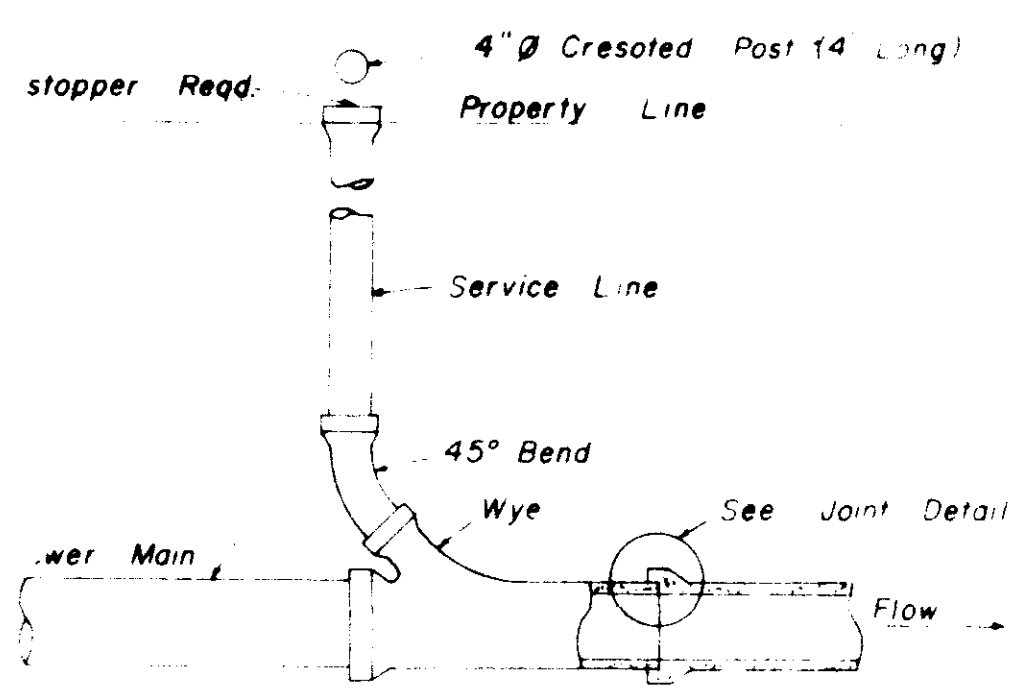
**HALF SECTION
MANHOLE WITH DROP CONNECTION**



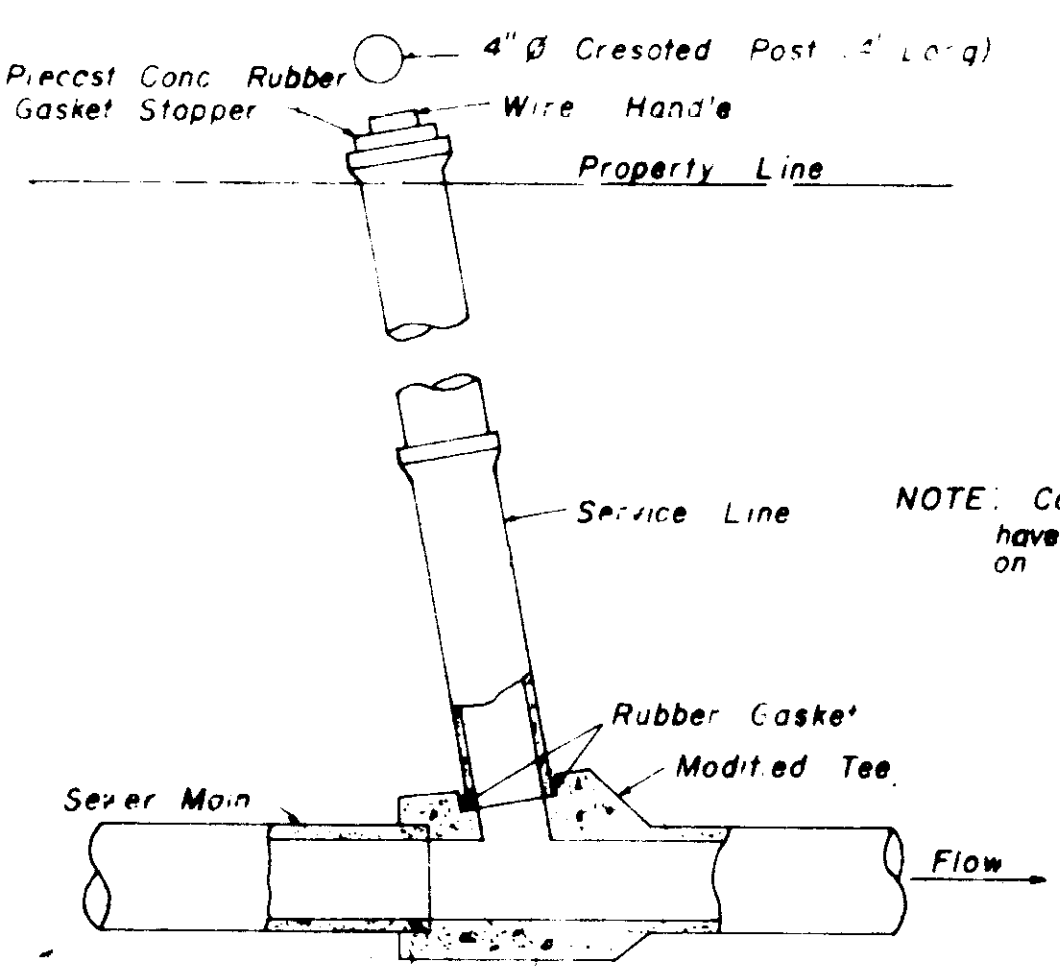
**ELEVATION
CONCRETE COLLAR AT
MANHOLE CONNECTION**



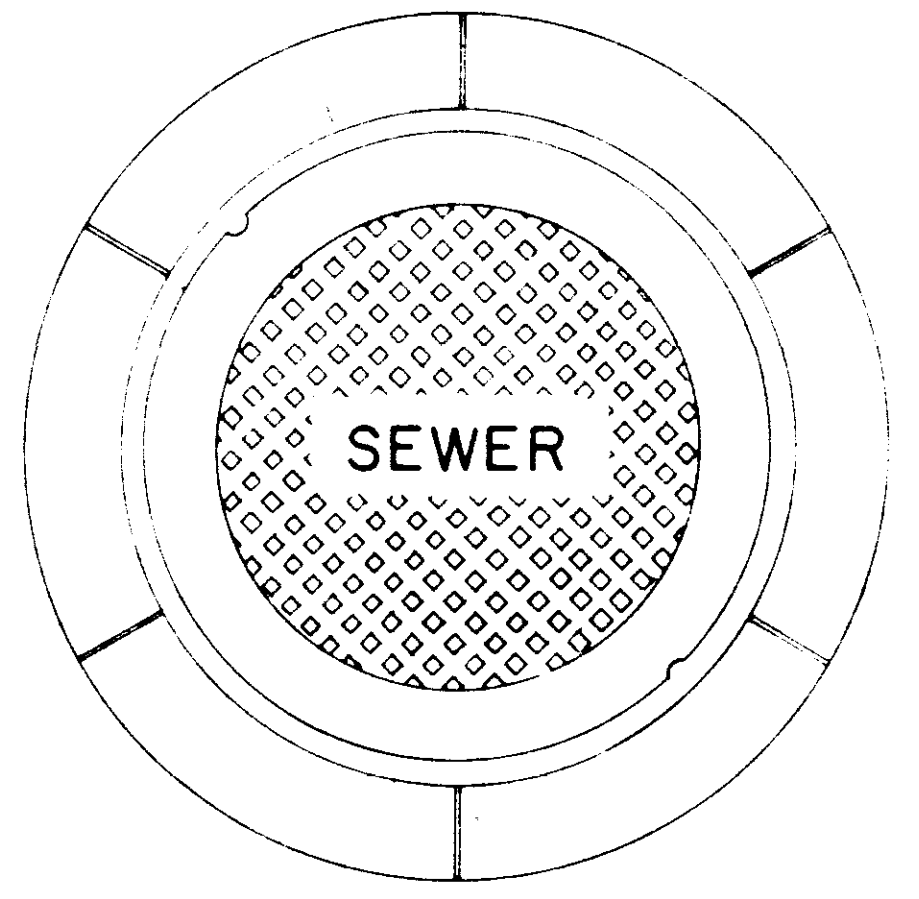
**BELL & SPIGOT TONGUE & GROOVE
JOINT DETAILS**



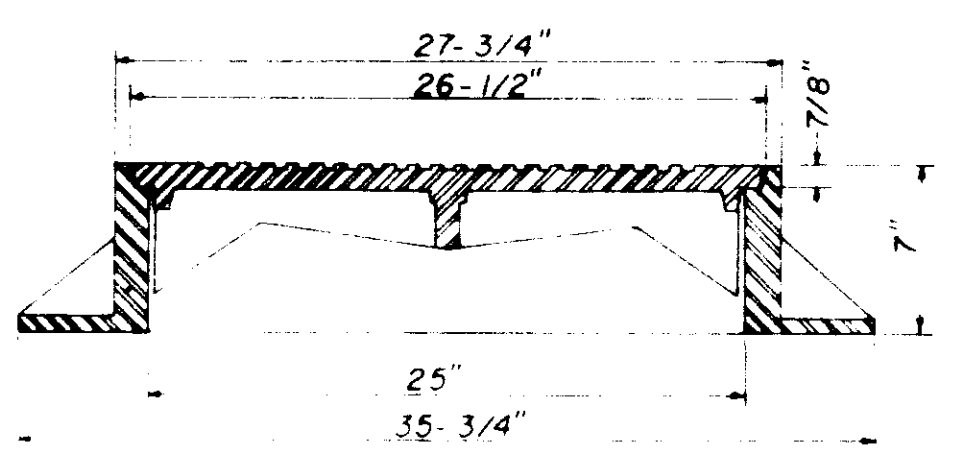
**TYPICAL SERVICE TO PROPERTY LINE
WITH WYE JOINT**



**TYPICAL SERVICE TO PROPERTY LINE
WITH MODIFIED TEE JOINT**

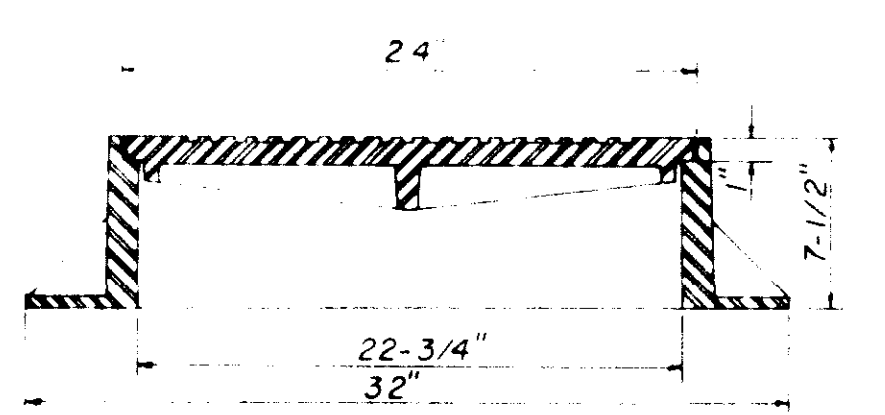


**PLAN
MANHOLE CASTING**



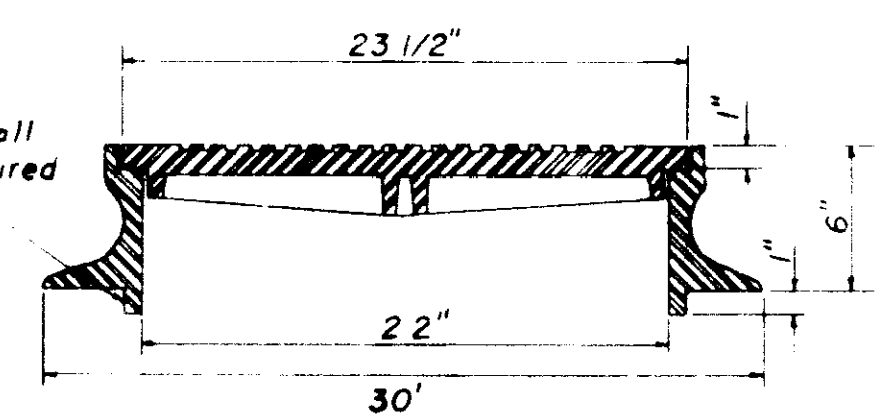
**SECTION
TYPE "A" MANHOLE CASTING**

NOTE: 1 Use Type "A" Manhole Casting in Street R.O.W.
2 Use Harper No. 2, City of Jackson Standard (420 lbs.) or Vulcan No. VM-15, City of Jackson Standard (420 lbs.)



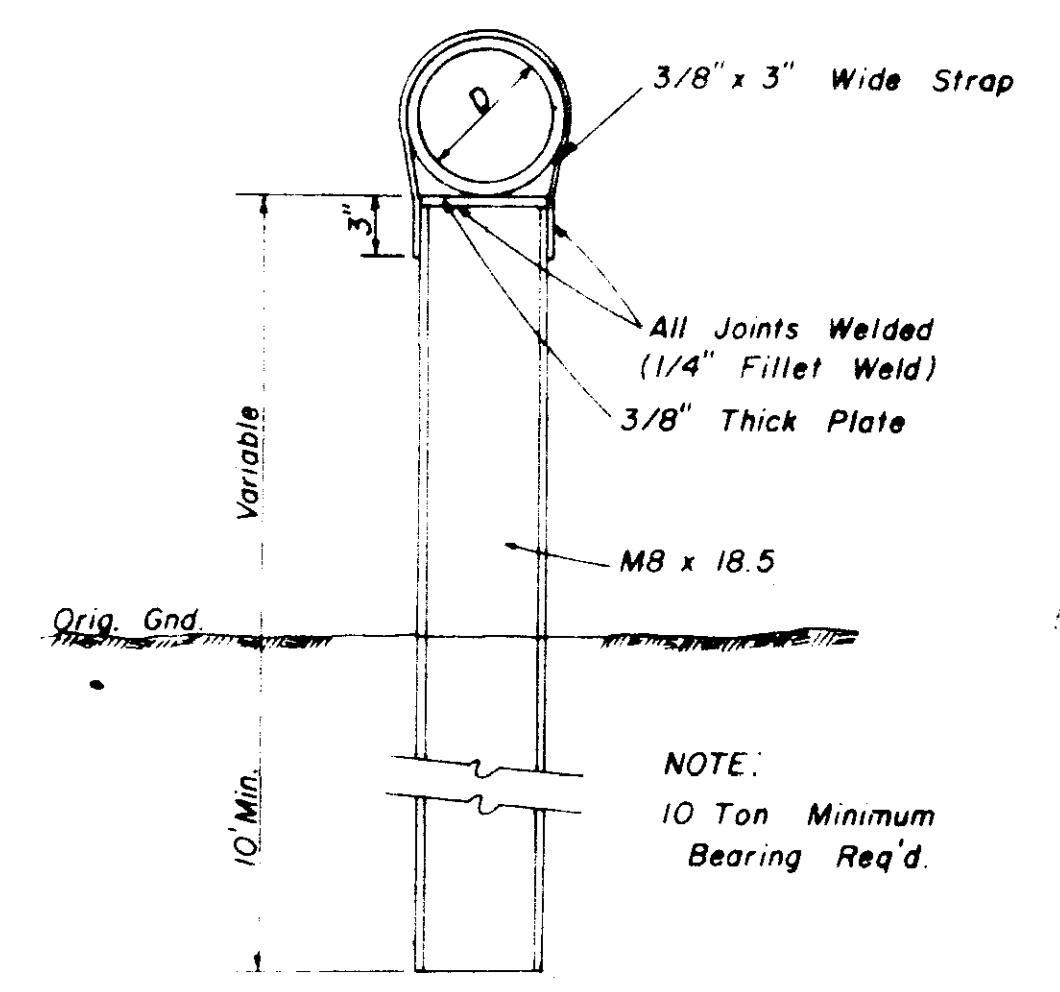
**SECTION
TYPE "B" MANHOLE CASTING**

NOTE: 1 Use Type "B" Manhole Casting for any Manhole not in a Street R.O.W.
2 Use Harper No. 1 (M.S.P.E. Standard) Light Weight (330 lbs.) or Vulcan No. VM-17 (300 lbs.) or Opelika Foundry No. C 2-1 (325 lbs.)

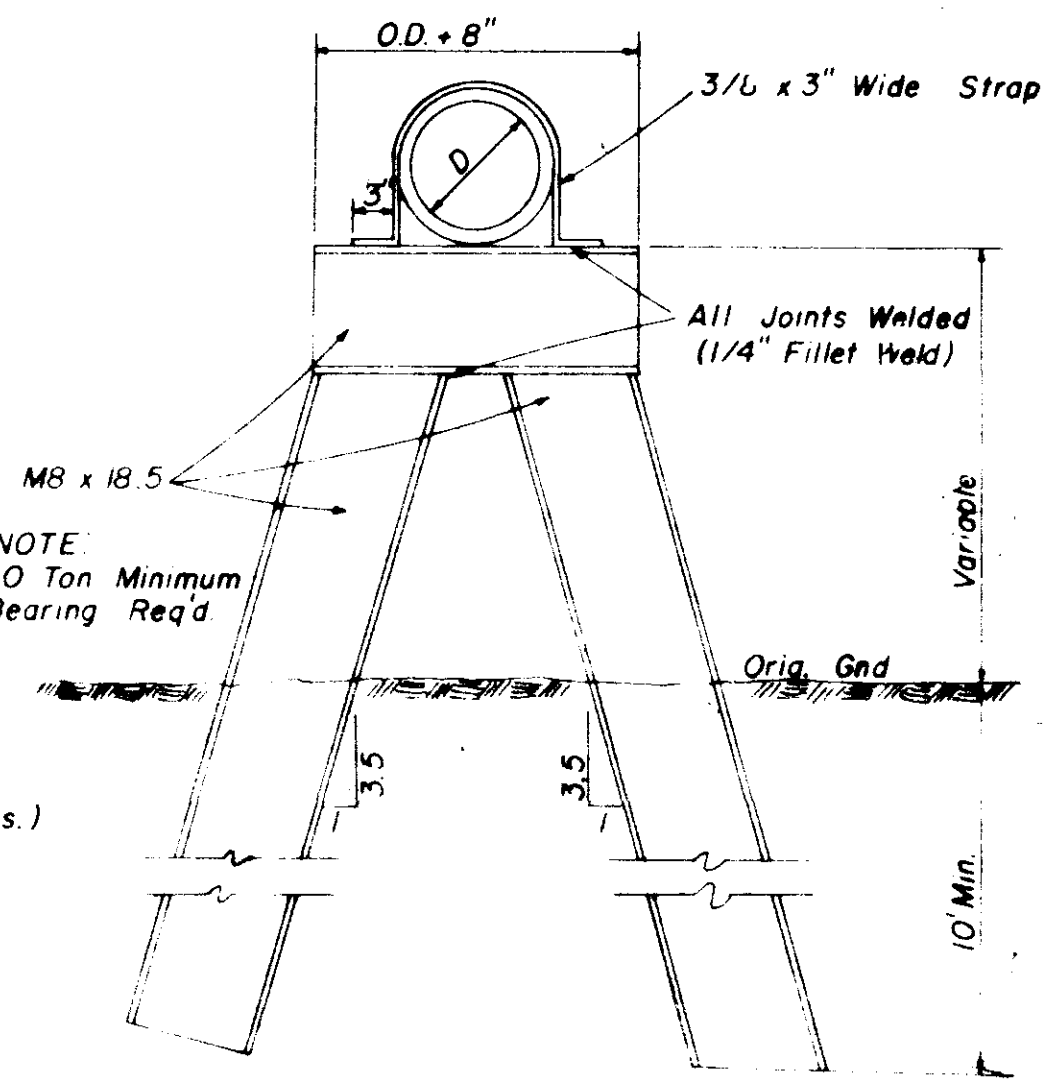


**SECTION
TYPE "C" MANHOLE CASTING**

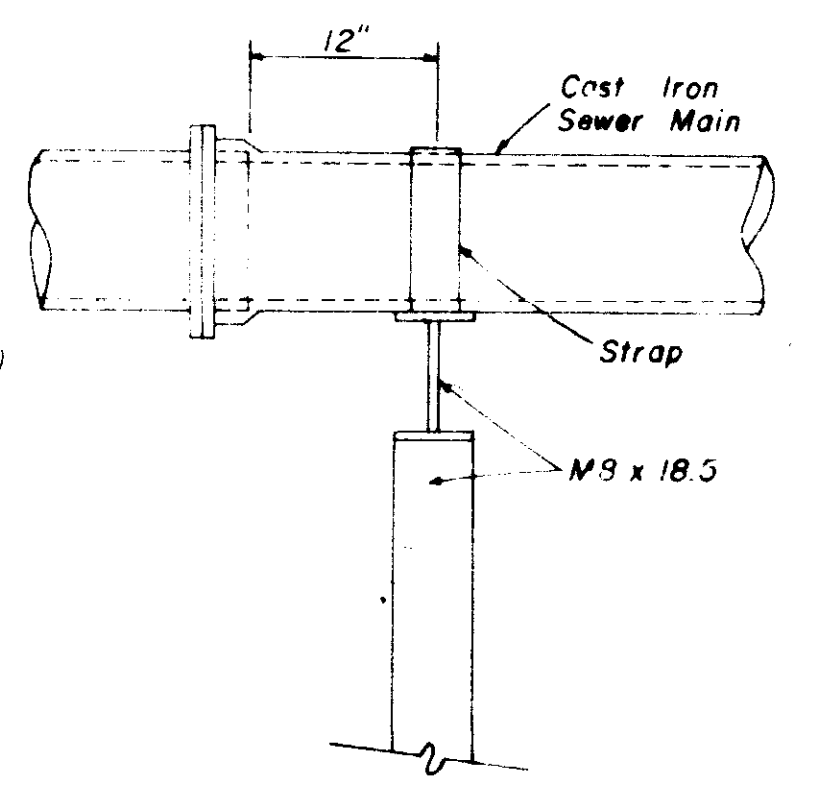
NOTE: 1 Use Type "C" Manhole Casting for Precast Manhole not in a Street R.O.W.
2 Use Harper No. 8 (330 lbs.) or Neenah No. R-1779 (300 lbs.) or Vulcan No. VM-7 (330 lbs.)



**DETAIL
TYPE "A" PIER**



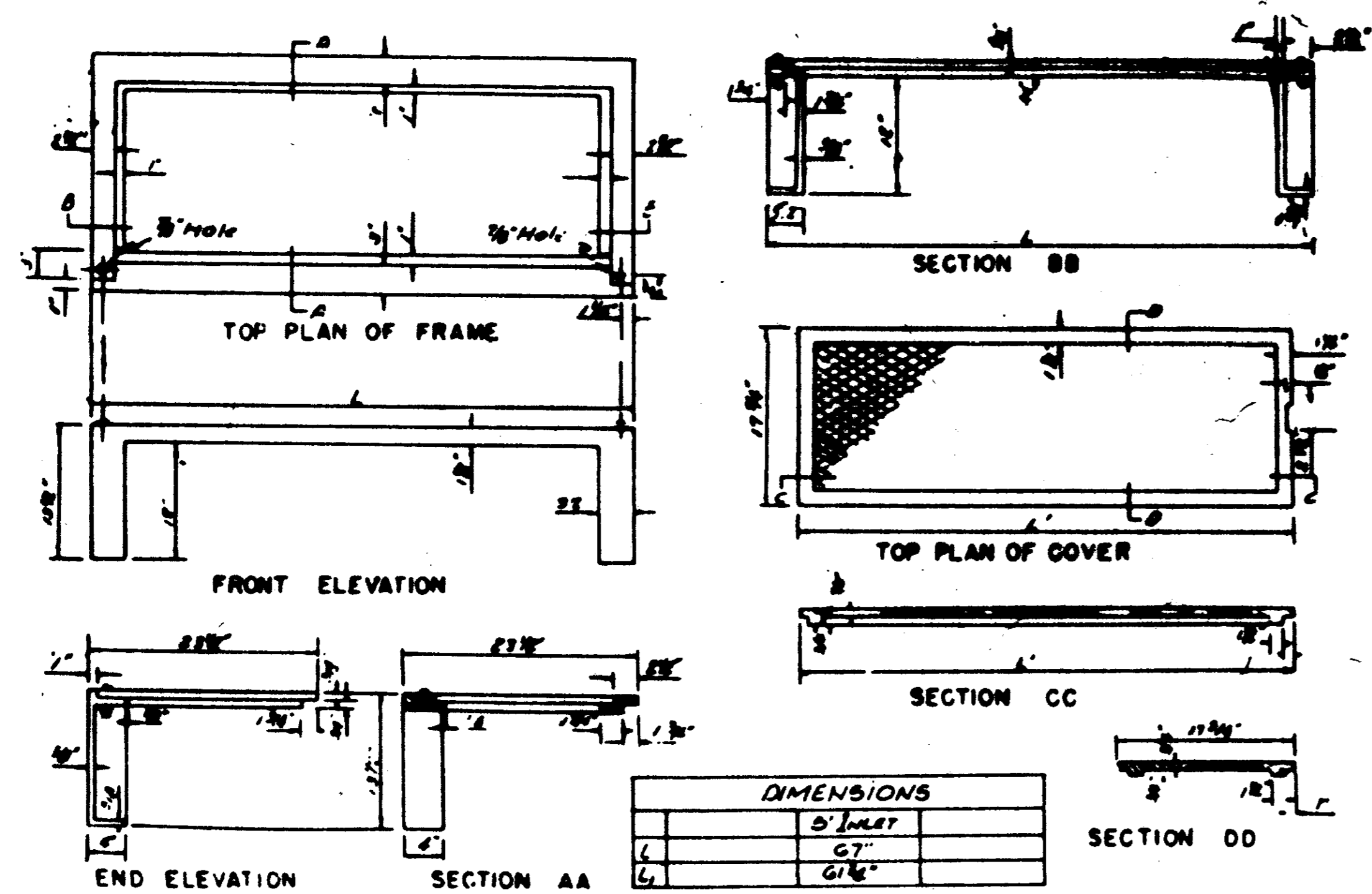
**DETAIL
TYPE "B" PIER**



**SIDE ELEVATION
TYPE "B" PIER**

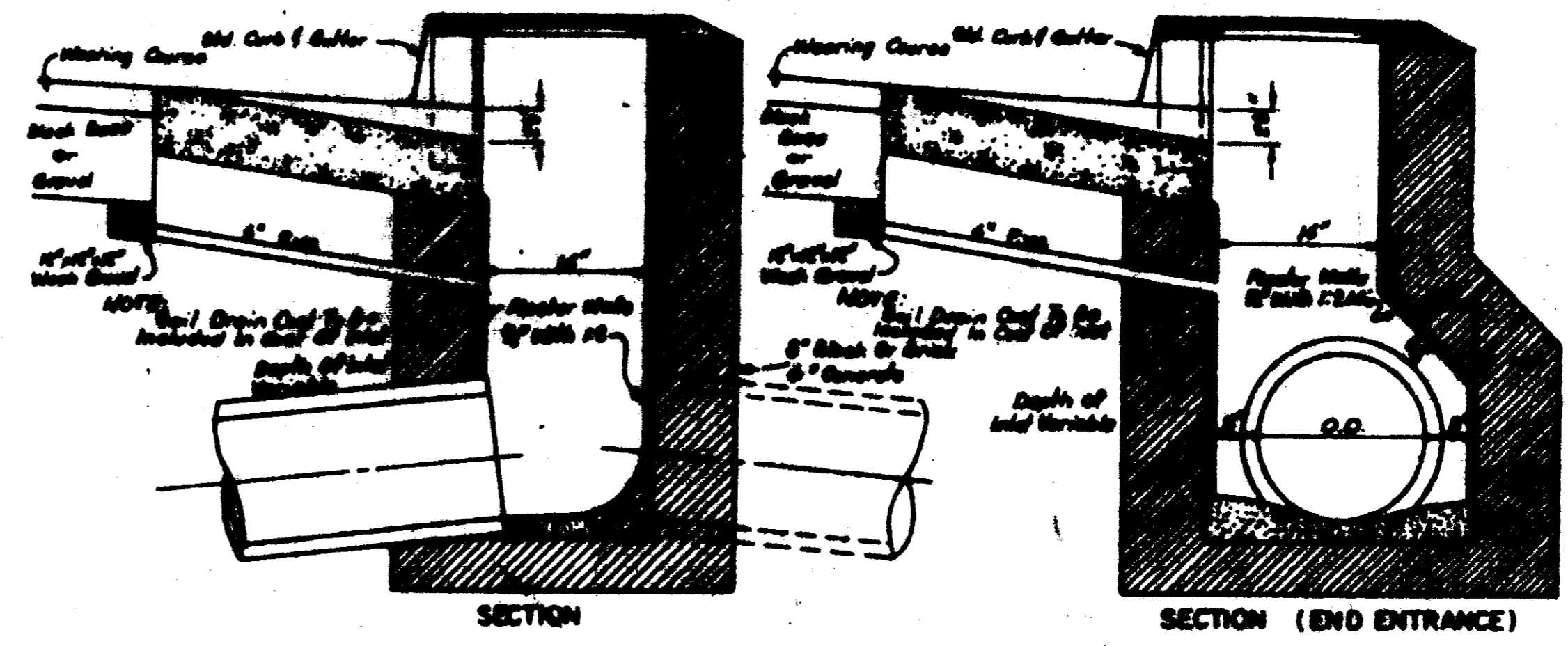
**SANITARY SEWER
STANDARD DETAILS**

CITY OF RIDGELAND			
DRAWN BY: H.J.	DATE: MARCH, 1988	9 OF 10	
CHECKED BY: JAW	SCALE: AS SHOWN		

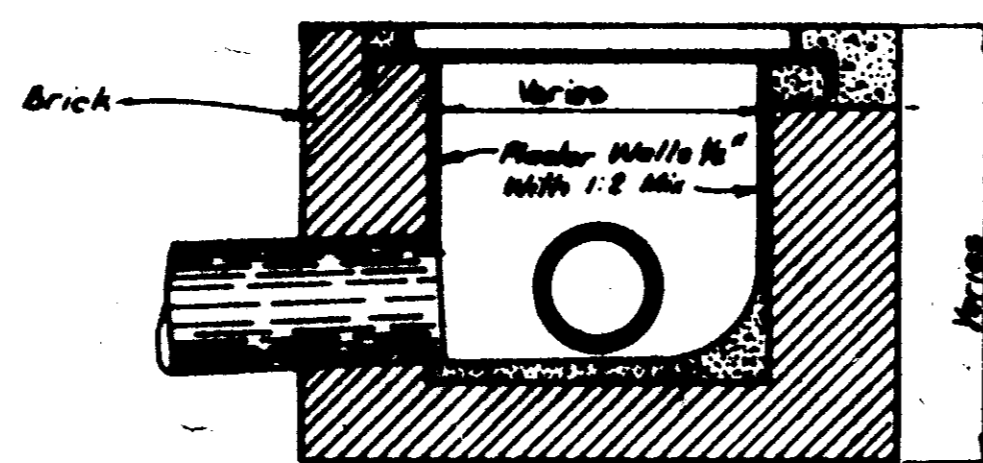


STANDARD CURB INLET CASTING

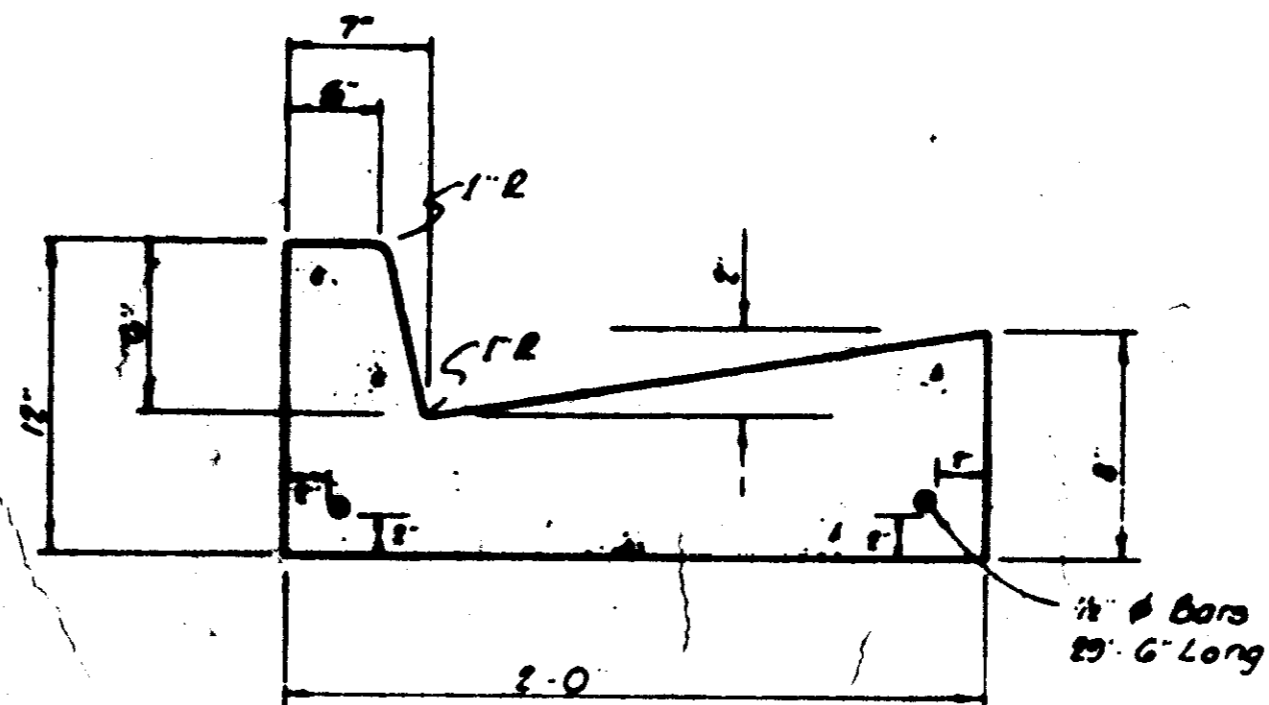
DIMENSIONS	
L	5' INLET
L	27"
L	6 1/2"



STANDARD CURB INLET



JUNCTION BOX WITH 24" NON-TRAFFIC OPEN GRATE



STANDARD CURB & GUTTER

NOTE: Water Service Connections Shall Be Marked In The Face Of The Curb With A "W" And The Sanitary Sewer Service Connections Shall Be Marked With An "S".