

GAS DISTRIBUTION MAP
OF
RIDGELAND
FOR

UNITED GAS CORPORATION
MISSISSIPPI DIVISION

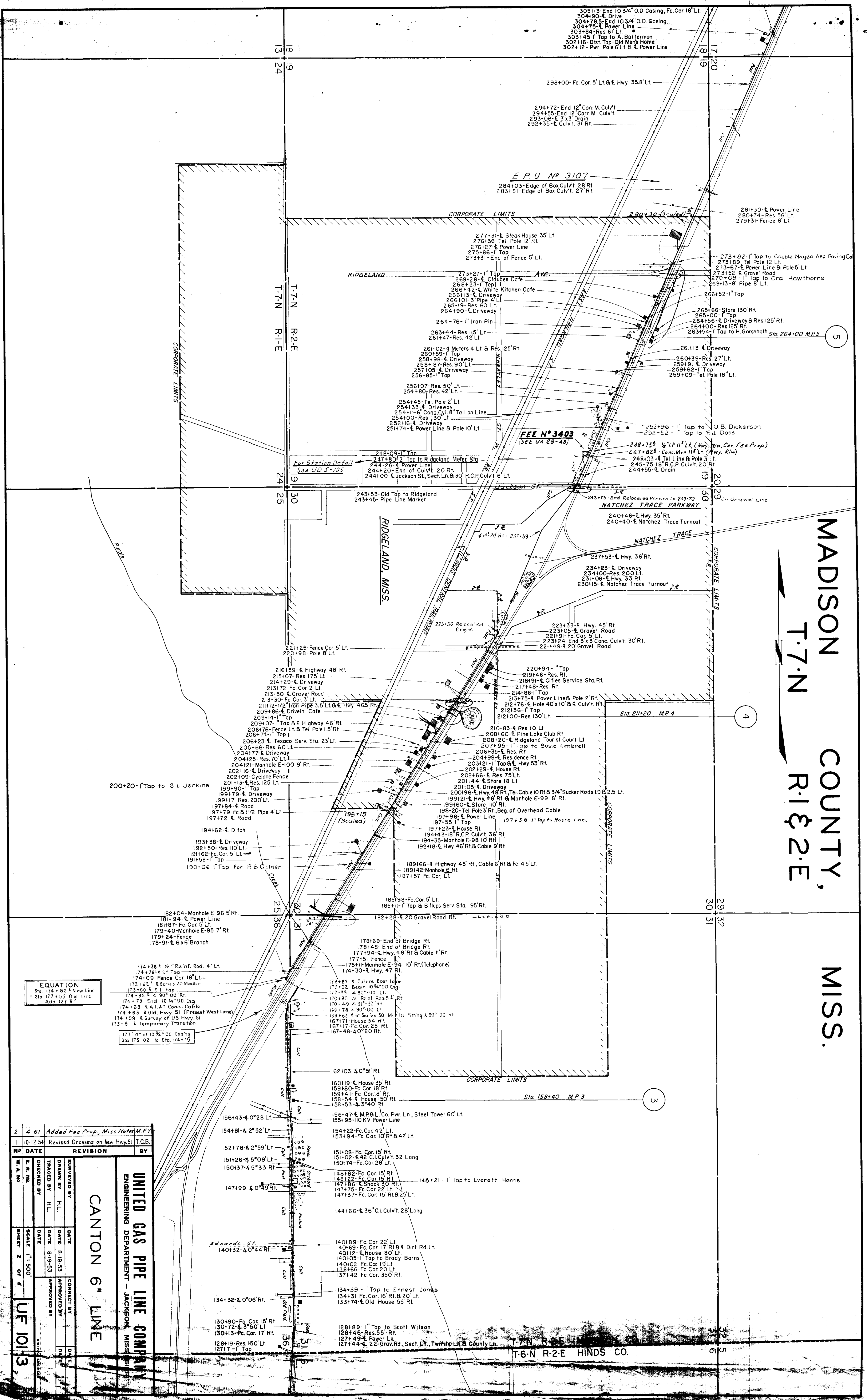
SCALE 1"=100'

REVISED TO-

BY-

PWP-03000

MADISON COUNTY, MISS.
T.7.N R.1&2.E



174+38 1/2" Reinf. Rod 4' Lt.
174+36 1/2" Top
174+09 Fence Cor. 18' Lt.
173+62 1/2" Series 30 Mueller
173+50 1/2" 1" Tap
174+82 1/2" 4" 90° 00' Rt.
174+79 End 10 3/4" O.D. Csg.
174+69 1/2" AT & T Coax. Cable
174+63 1/2" Old Hwy. 51 (Present West Lane)
174+09 1/2" Survey of US Hwy. 51
173+91 1/2" Temporary Transition
177' 0" 10 3/4" O.D. Casing
Sta 173+02 to Sta 174+73

NO	DATE	REVISION	BY
2	4-61	Added Fee Prop., Misc. Notes M.F.V.	
1	10-12-54	Revised Crossing on New Hwy. 51	T.C.B.

NO	DATE	REVISION	BY
1	10-12-54	Revised Crossing on New Hwy. 51	T.C.B.

NO	DATE	REVISION	BY
1	10-12-54	Revised Crossing on New Hwy. 51	T.C.B.

NO	DATE	REVISION	BY
1	10-12-54	Revised Crossing on New Hwy. 51	T.C.B.

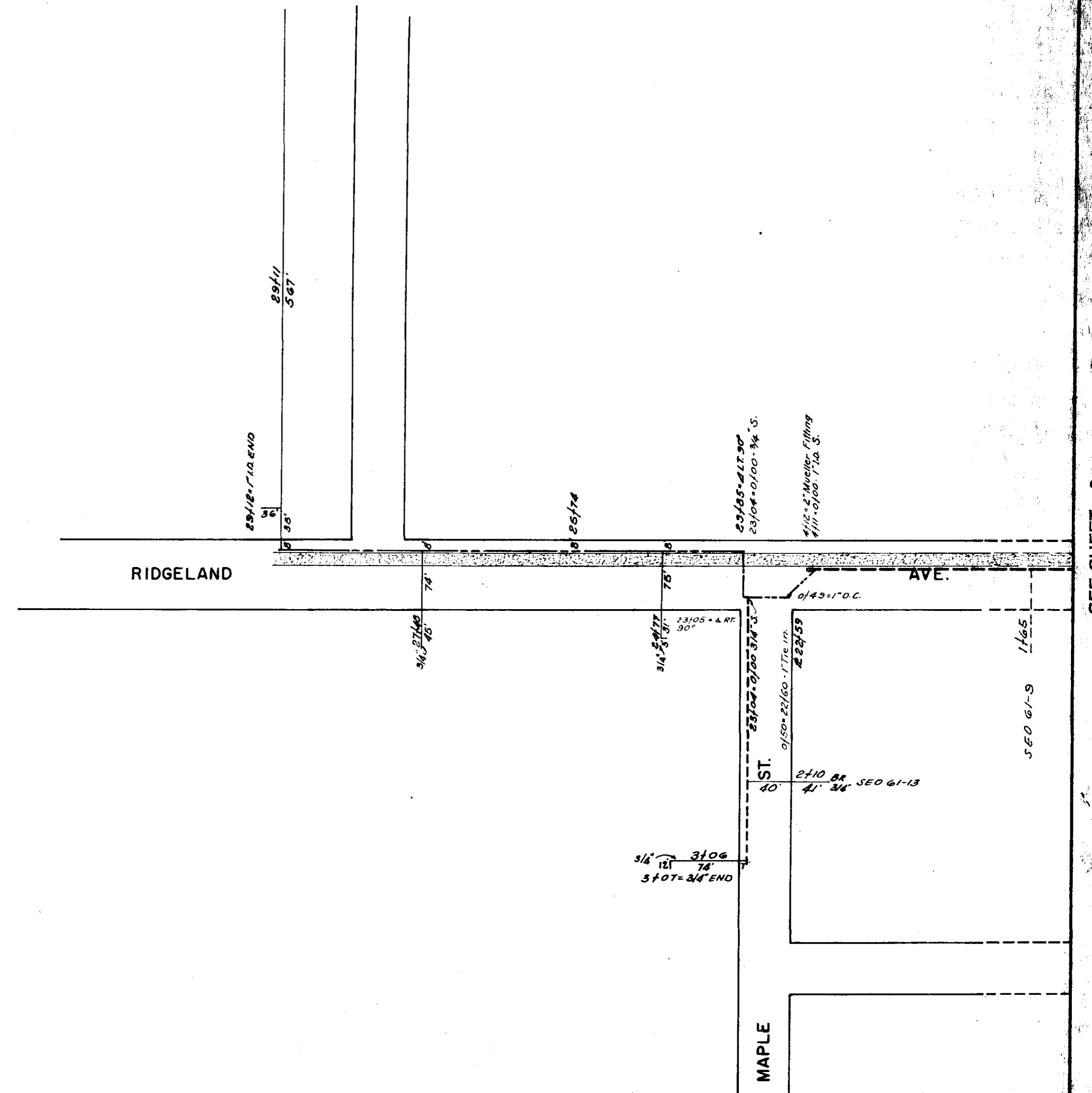
UNITED GAS PIPE LINE COMPANY
ENGINEERING DEPARTMENT - JACKSON, MISS.

CANTON 6" LINE

SCALE 1" = 500'
SHEET 2 OF 6
UF 1013

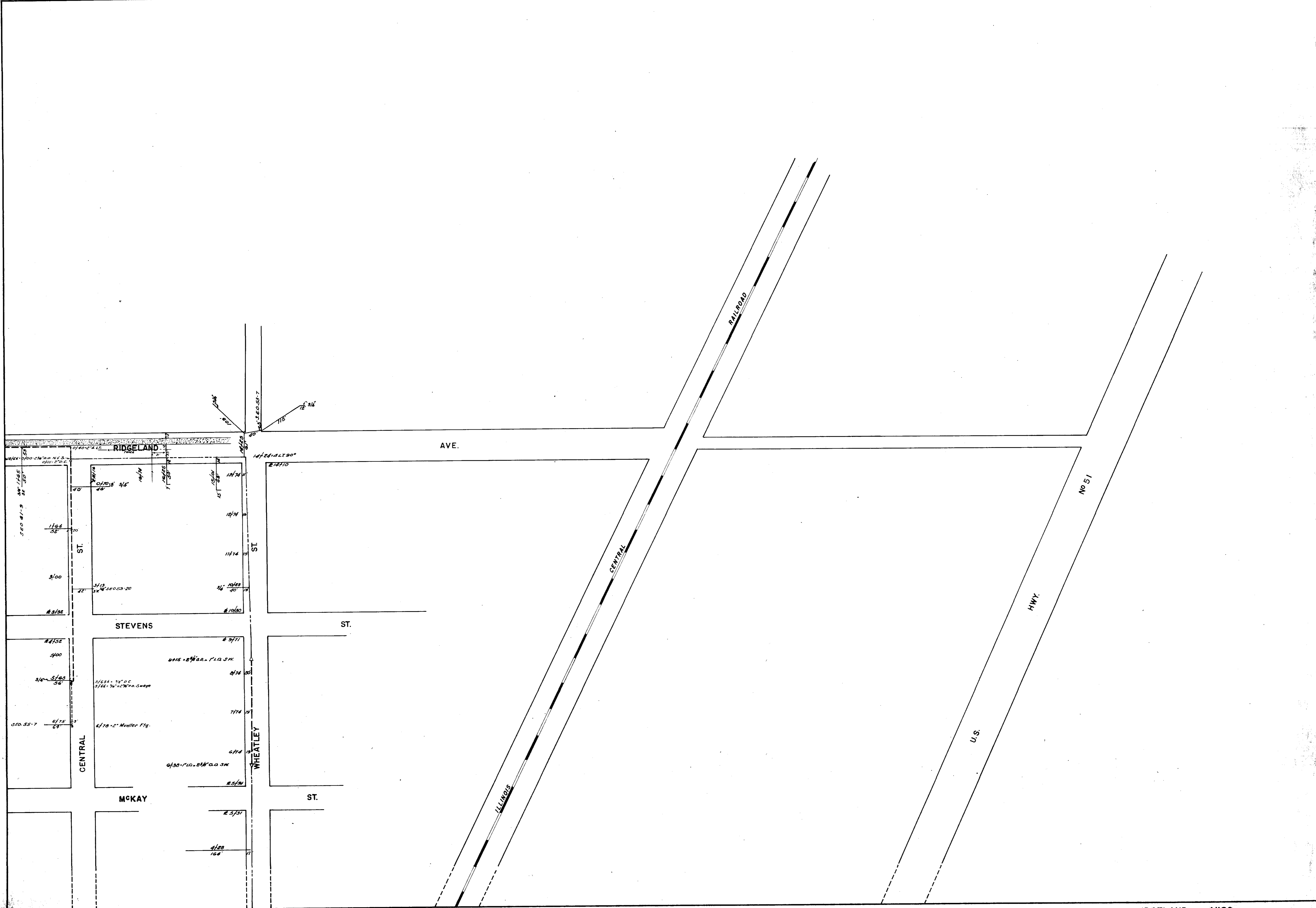
T-7-N R-2-E
T-6-N R-2-E HINDS CO.

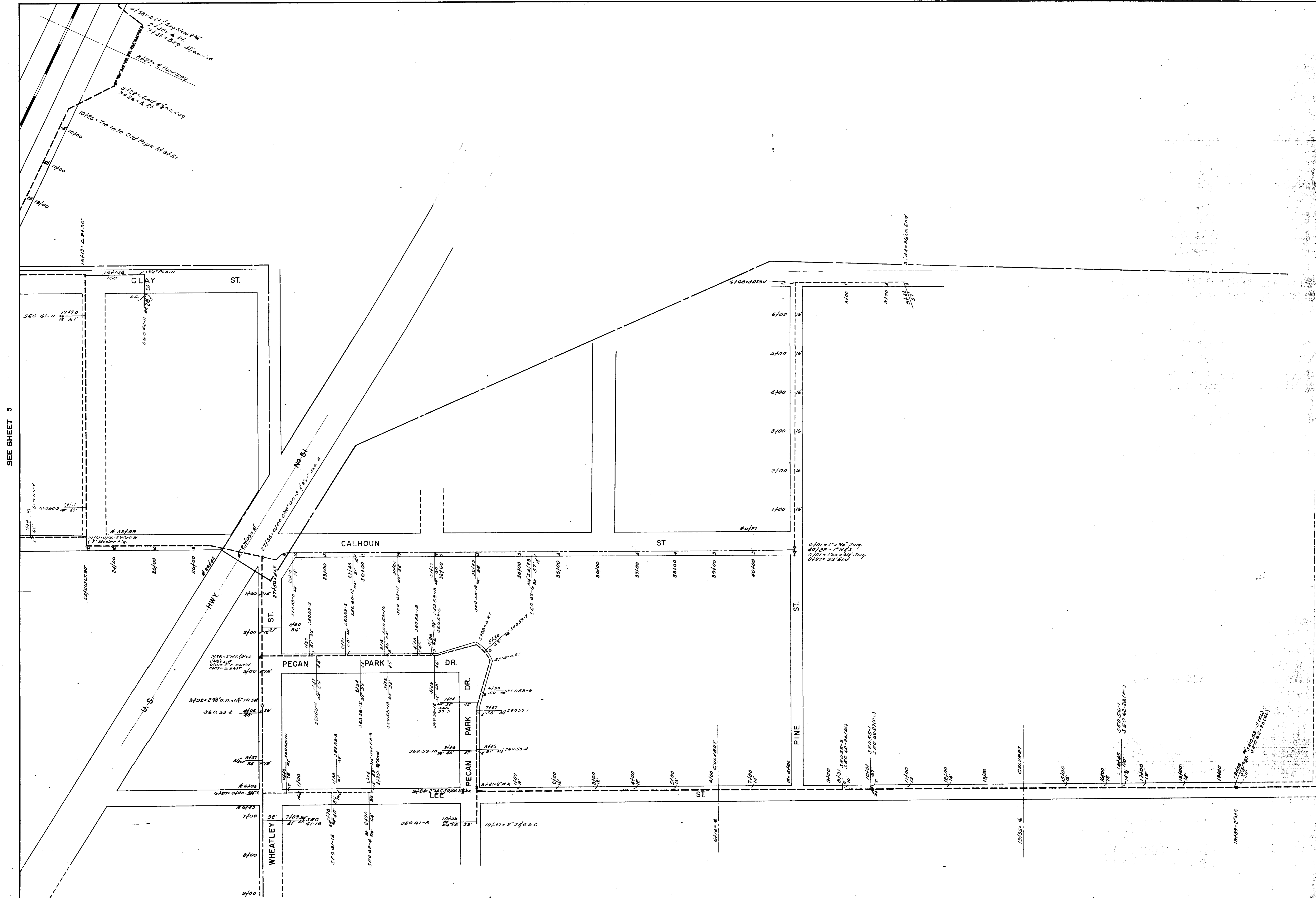
SEE SHEET



SEE SHEET 2

SEE SHEET 1

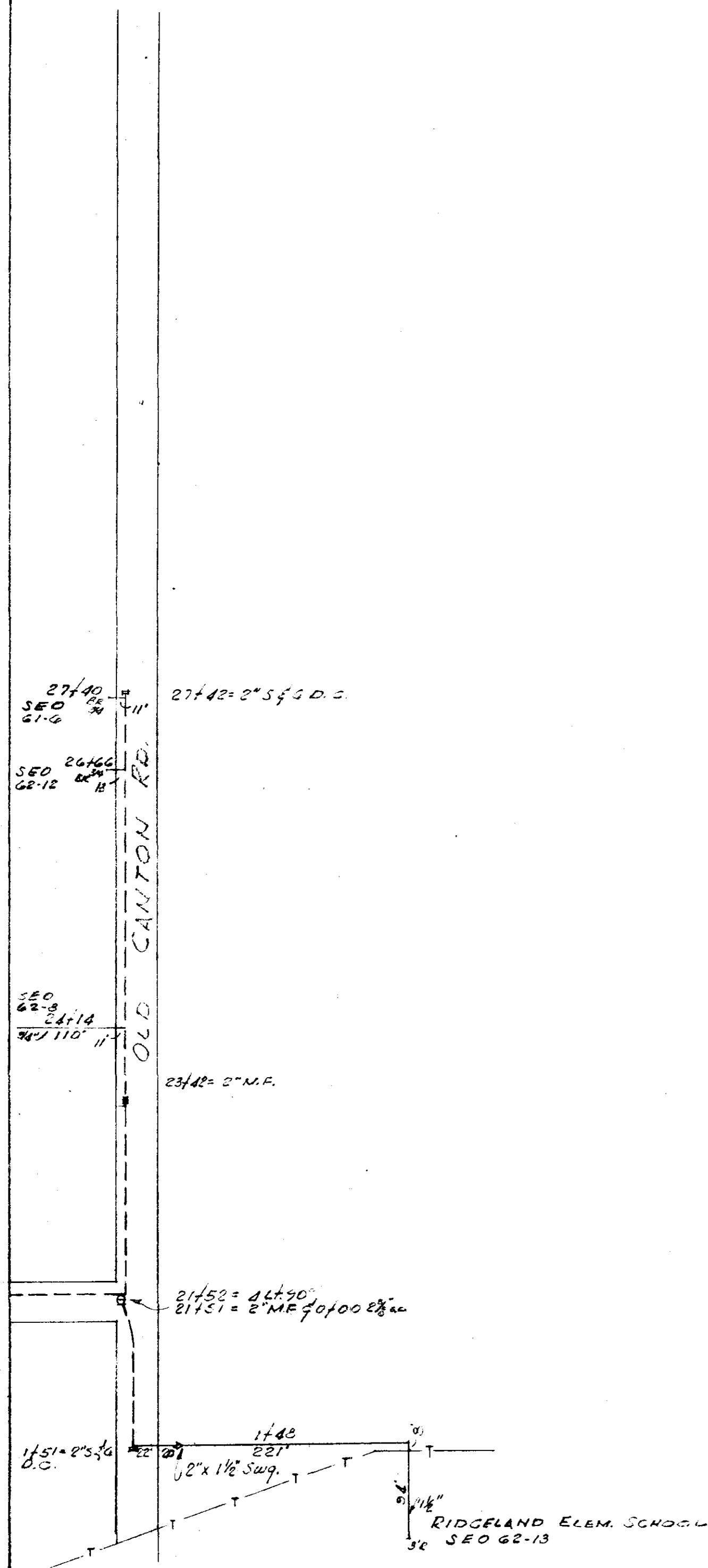




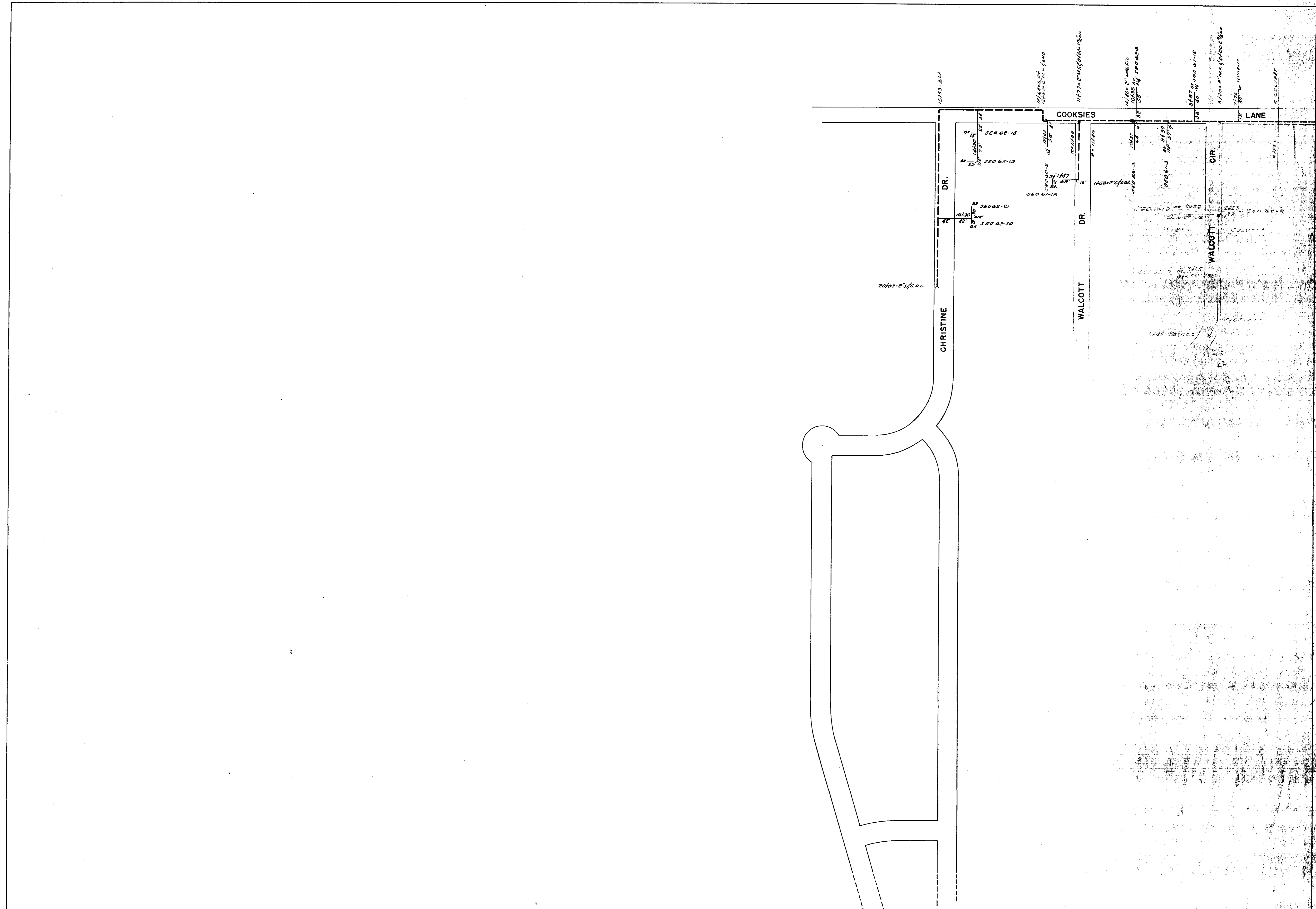
SEE SHEET 5

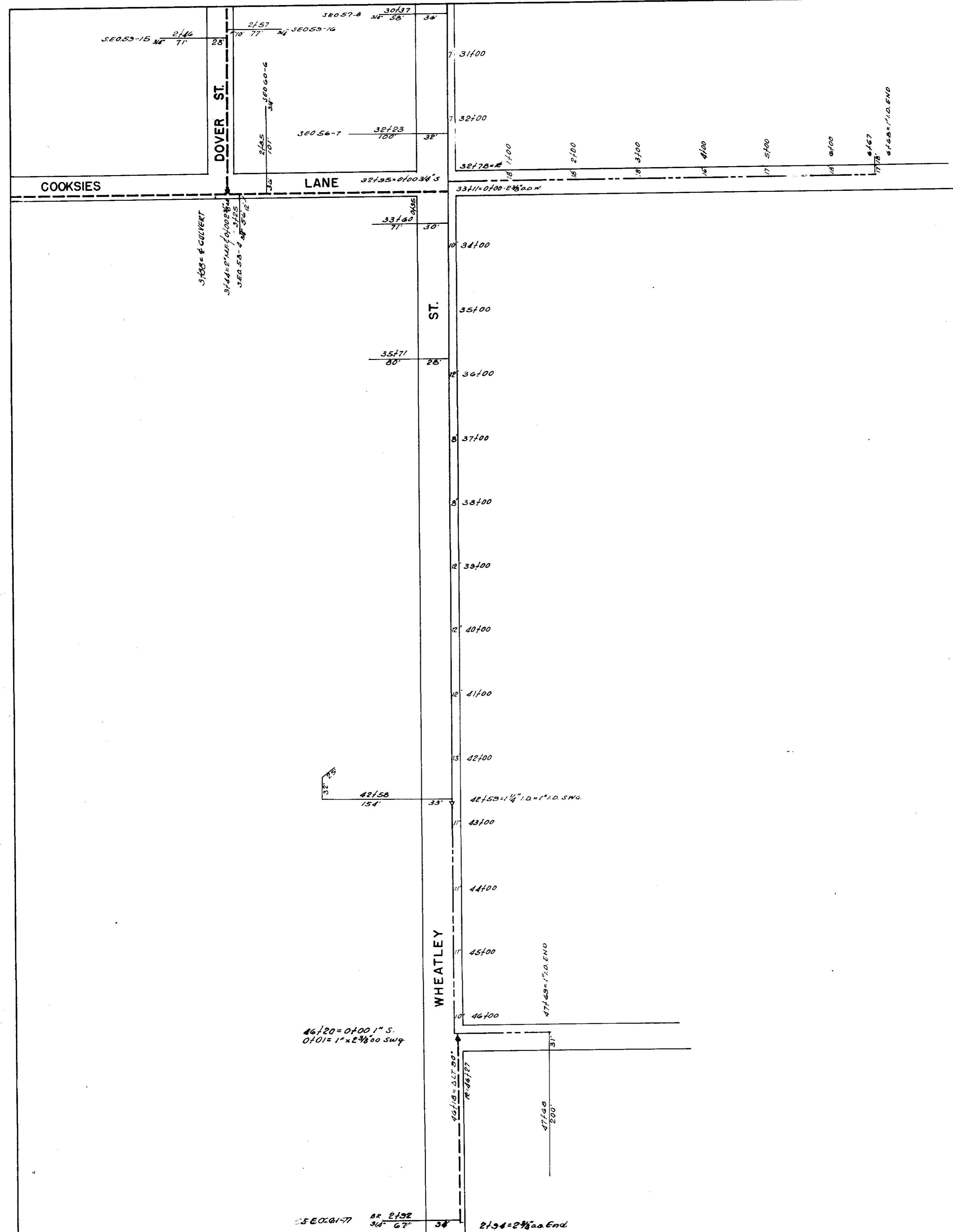
SEE SHEET

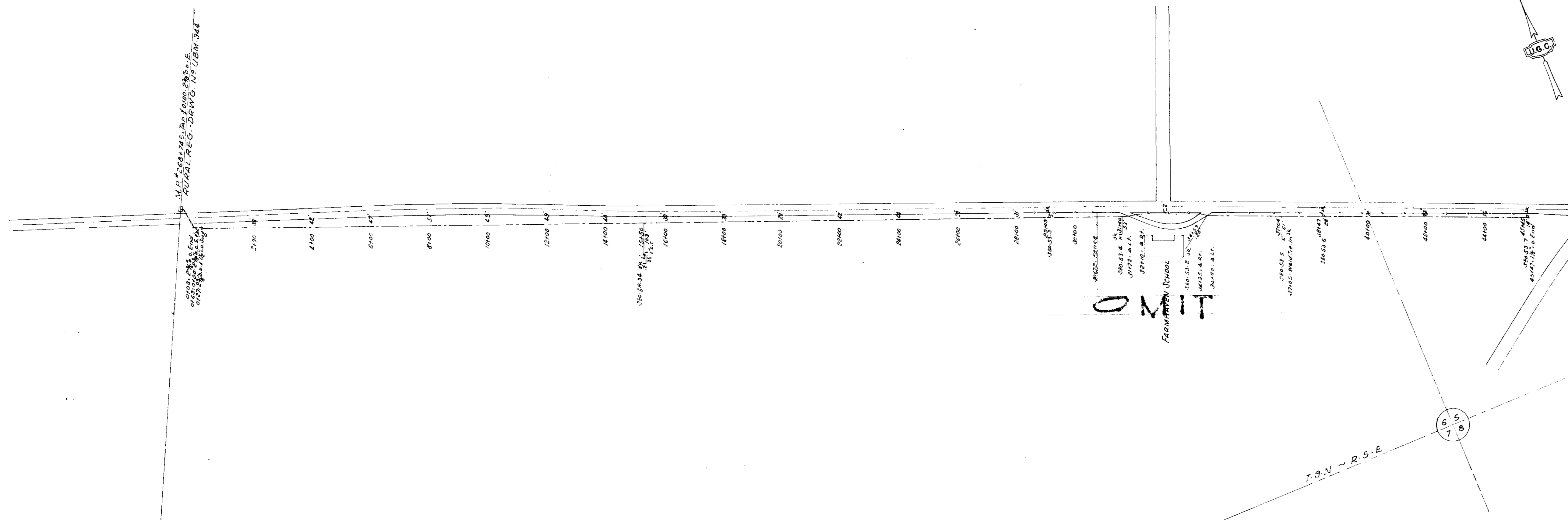
SEE SHEET 6



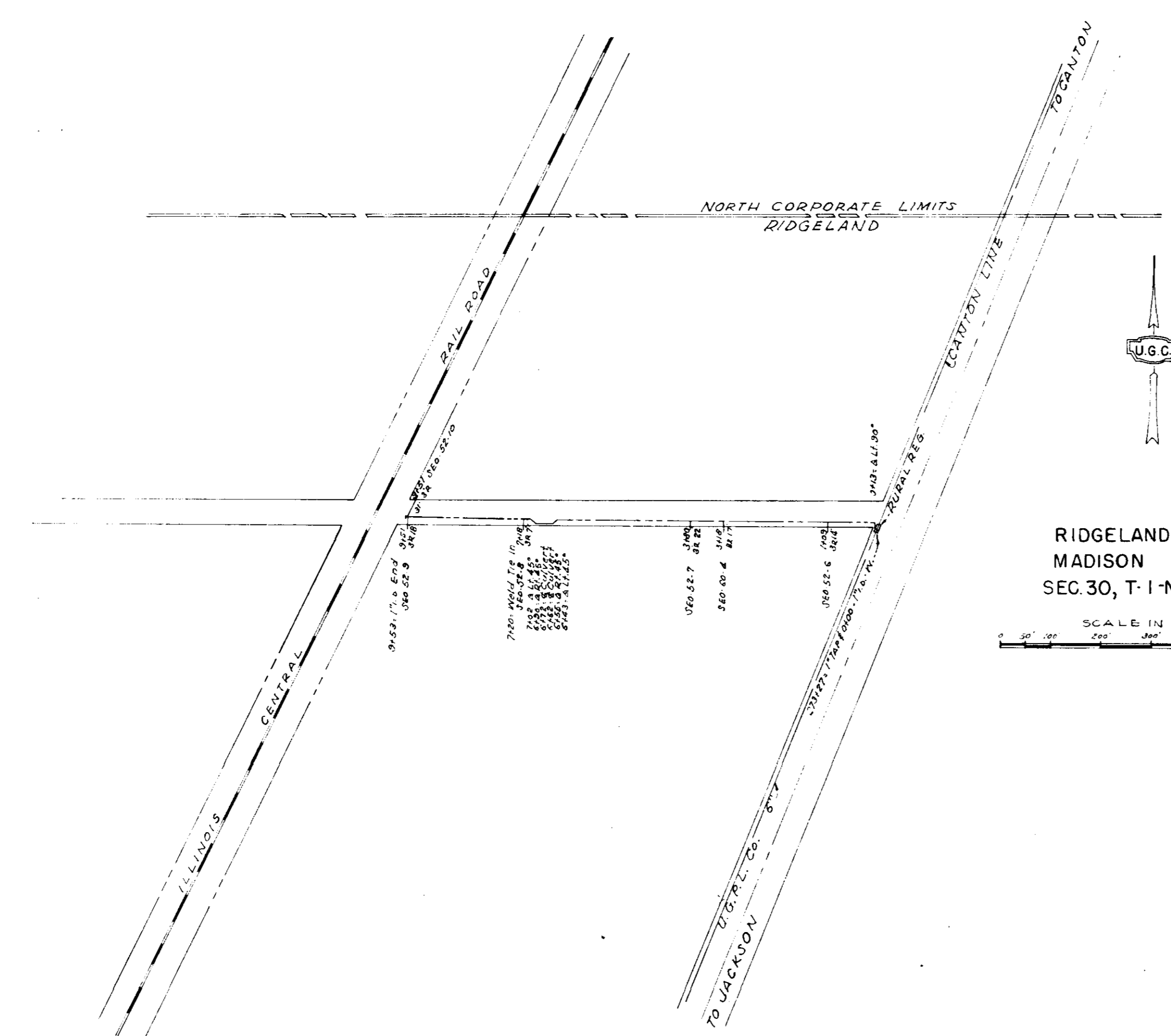
SEE SHEET







FARMHAVEN RURAL
 MADISON COUNTY
 SEC. 586, T-1-N-R-5-E
 SCALE IN FEET
 0 100 200 300 400



RIDGELAND RURAL
 MADISON COUNTY
 SEC. 30, T-1-N-R-2-E
 SCALE IN FEET
 0 100 200 300 400