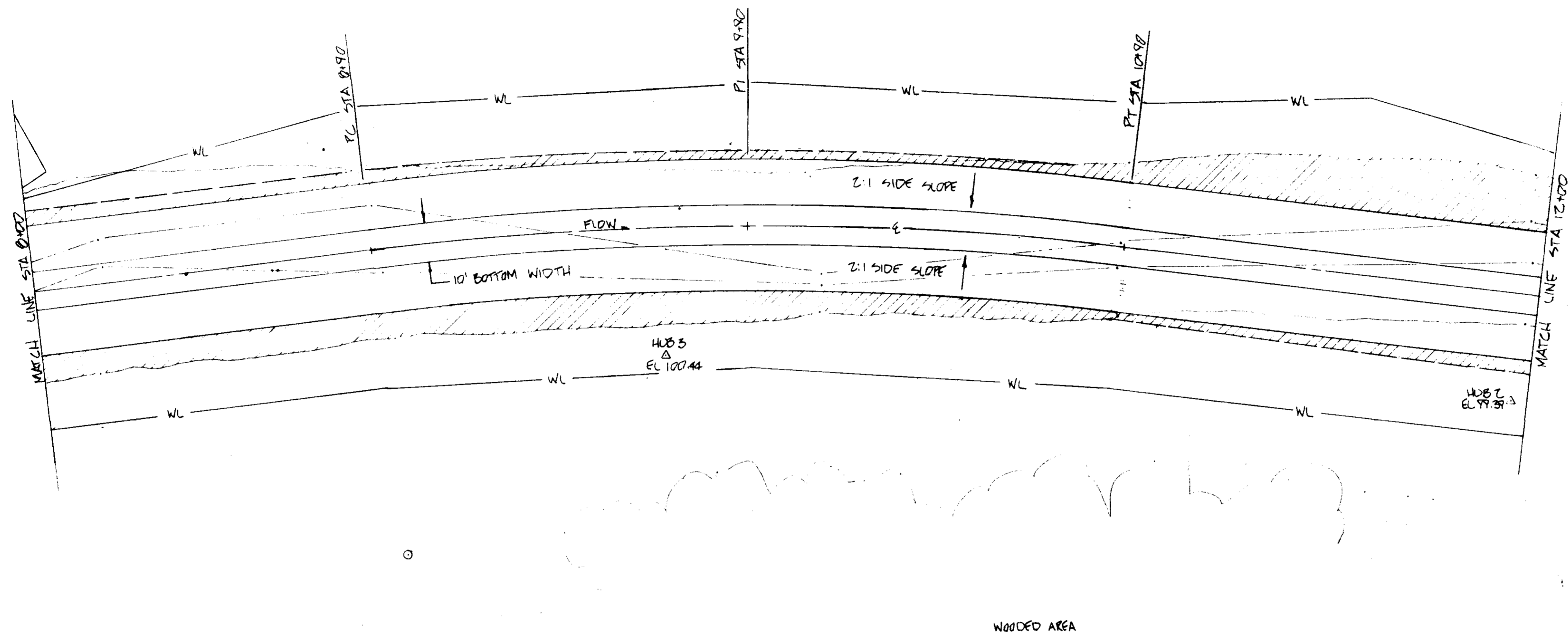


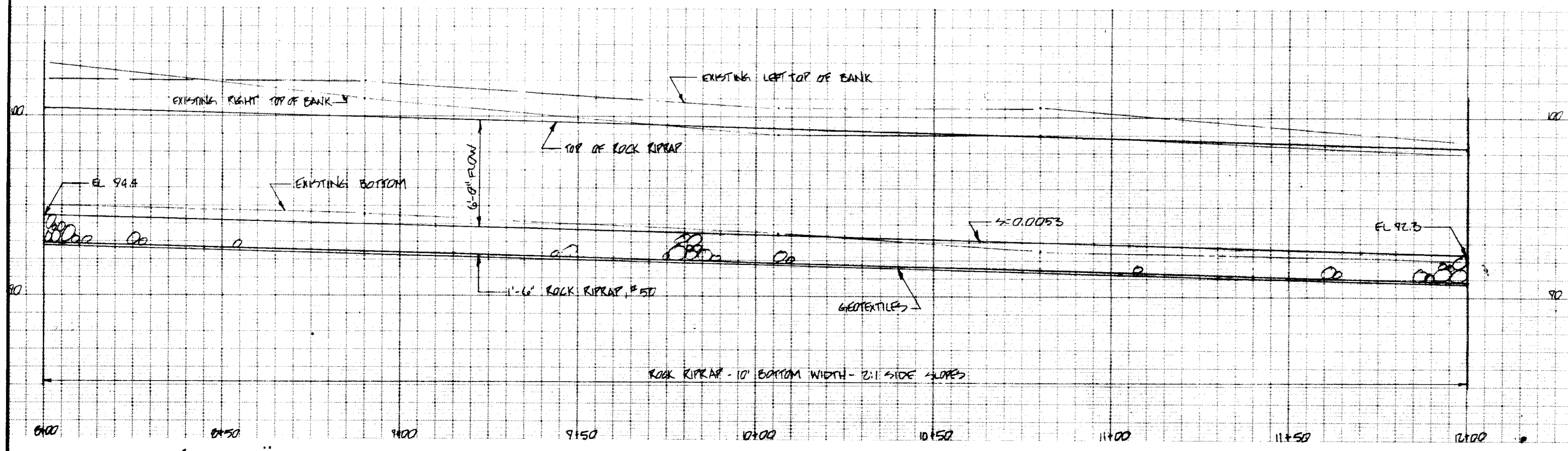
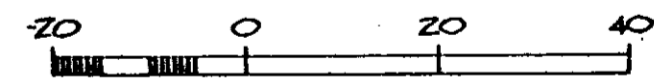
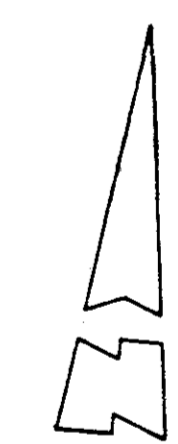


PI STA 9+90  
 CURVE DATA  
 $\Delta = 149^{\circ} 00'$   
 $D = 70' 00''$   
 $R = 610.51'$   
 $L = 200.00'$   
 $T = 100.50'$   
 $C = 199.50'$   
 $M = 6.10'$   
 $E = 6.15'$

TENTATIVE - SUBJECT TO REVISION



- LEGEND**
- $\Delta$  TRANSMIT STATION
  - PLOTTED POINT
  - SEWER LINE W/ MANHOLE
  - T- TELEPHONE LINE W/ JUNCTION BOX & POLE
  - P- POWER LINE W/ POLE
  - W- WATER LINE W/ METER
  - G- GAS LINE W/ METER
  - X-X- EXISTING FENCE LINE
  - EXISTING TOE
  - EXISTING TOP OF BANK
  - APPROX. LIMIT OF CUT
  - WL- APPROX. LIMIT OF WORK
  - /// EARTH FILL
  - CONCRETE GROUT
  - EROSION CONTROL BLANKET



VILLAGE SQUARE  
 CITY OF RIDGELAND  
 MADISON COUNTY, MISSISSIPPI  
 EMERGENCY WATERSHED PROJECT  
 PLAN AND PROFILE

**U. S. DEPARTMENT OF AGRICULTURE**  
**SOIL CONSERVATION SERVICE**

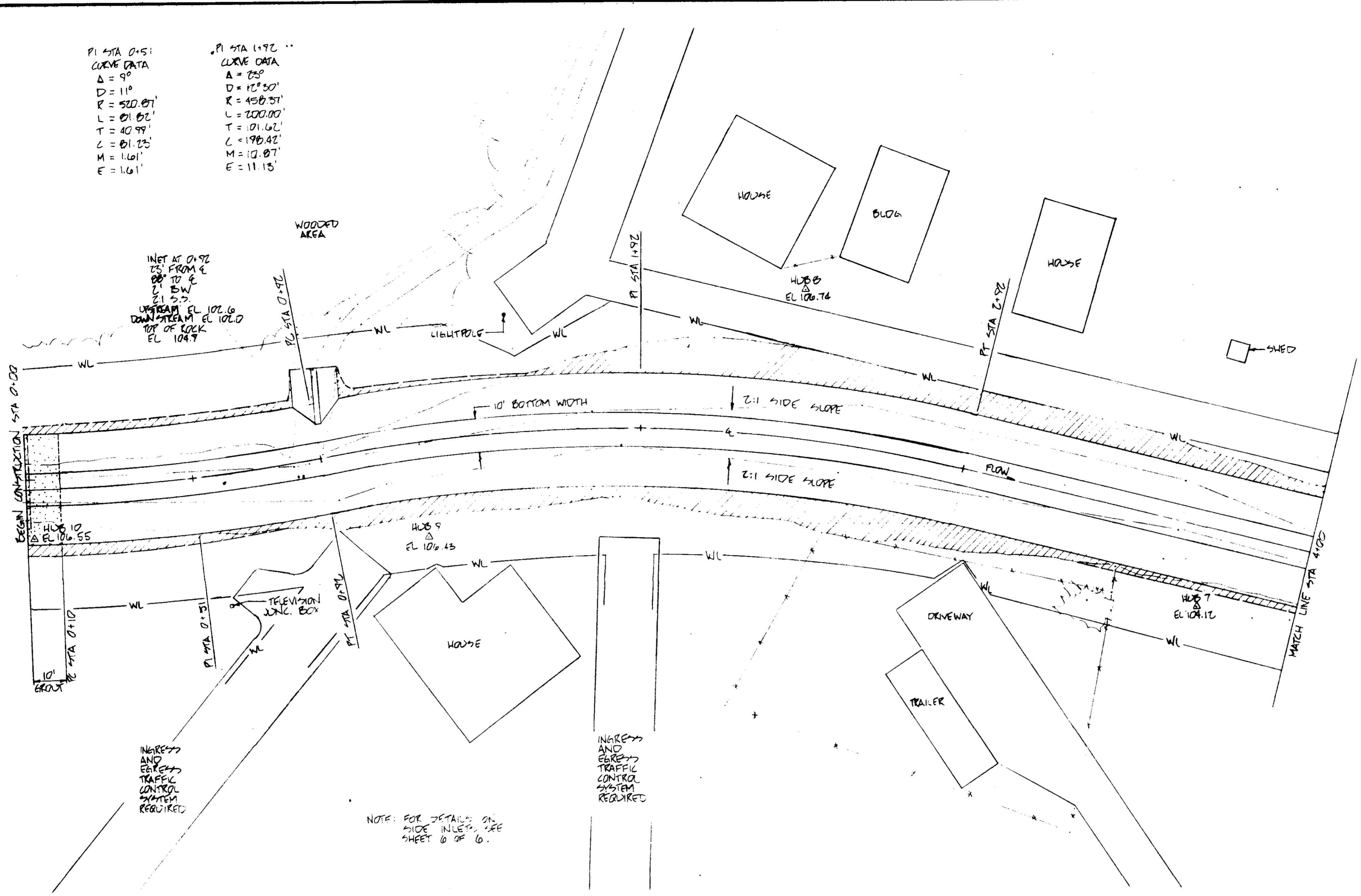
Designed: REC, NEM	Date: 3-89	Approved by:
Drawn: NEM	3-89	Title:
Traced:		Title:
Checked:		Sheet No. 4 of 6
		Drawing No.



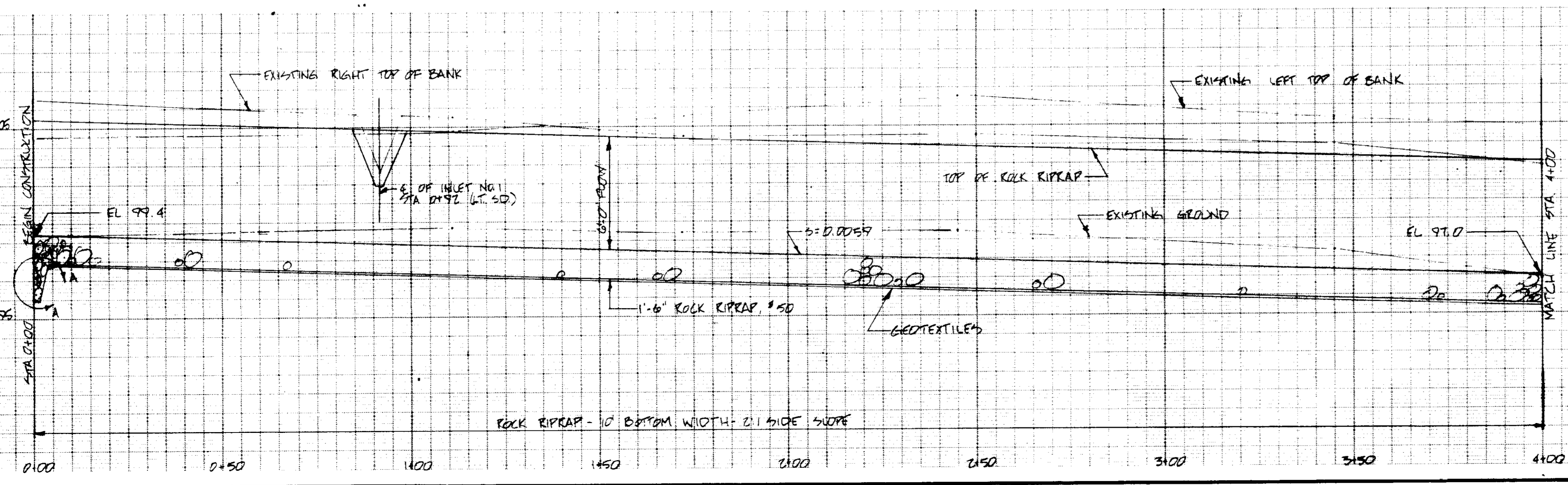
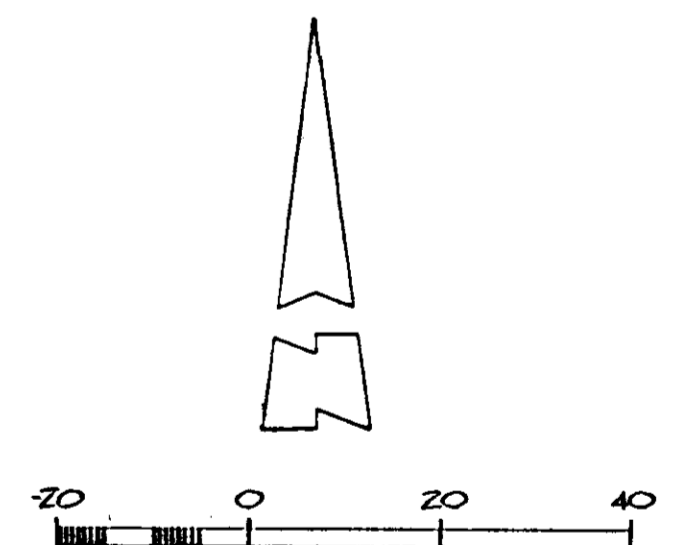
P1 STA 0+51  
 CURVE DATA  
 Δ = 9°  
 D = 11°  
 R = 520.87'  
 L = 81.82'  
 T = 40.99'  
 C = 81.25'  
 M = 1.61'  
 E = 1.61'

P1 STA 1+92  
 CURVE DATA  
 Δ = 25°  
 D = 12° 50'  
 R = 450.31'  
 L = 200.00'  
 T = 101.62'  
 C = 196.42'  
 M = 12.87'  
 E = 11.13'

**"TENTATIVE - SUBJECT TO REVISION"**



- LEGEND**
- △ TRANSIT STATION
  - PLOTTED POINT
  - SEWER LINE W/ MANHOLE
  - T— TELEPHONE LINE W/ JUNCTION BOX & POLE
  - P— POWER LINE W/ POLE
  - W— WATER LINE W/ METER
  - G— GAS LINE W/ METER
  - X— EXISTING FENCE LINE
  - --- — EXISTING TOE
  - --- — EXISTING TOP OF BANK
  - --- — APPROX. LIMIT OF CUT
  - --- — APPROX. LIMIT OF WORK
  - /// EARTH FILL
  - CONCRETE GROUT
  - EROSION CONTROL BLANKET



VILLAGE SQUARE  
 CITY OF RIDGE AND  
 MADISON COUNTY, MISSISSIPPI  
 EMERGENCY WATER-SHED PROJECT  
 PLAN AND PROFILE

U. S. DEPARTMENT OF AGRICULTURE  
 SOIL CONSERVATION SERVICE

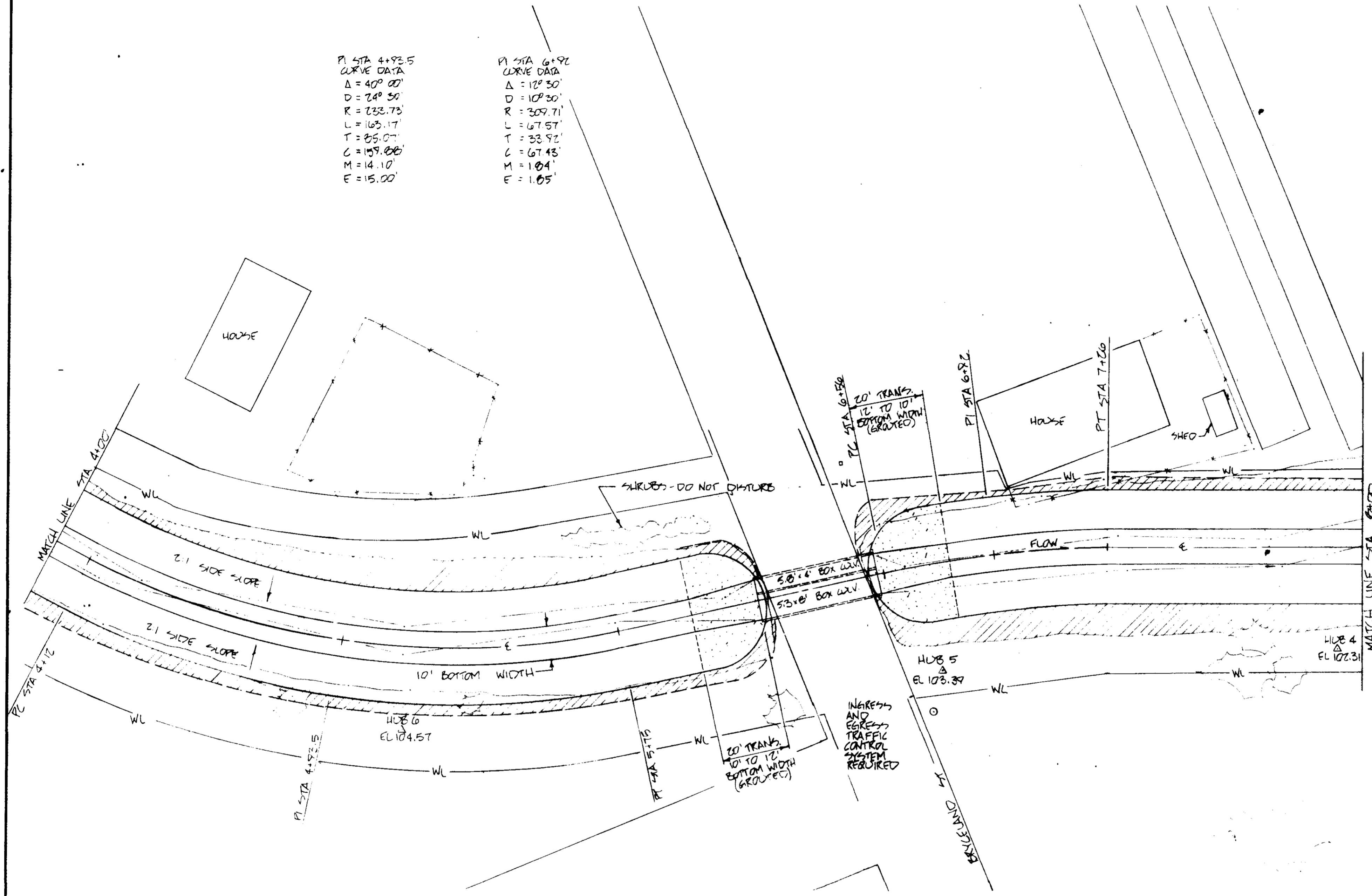
Date: 7-67 Approved by: \_\_\_\_\_  
 R.R. NEM

**PWP-04002**

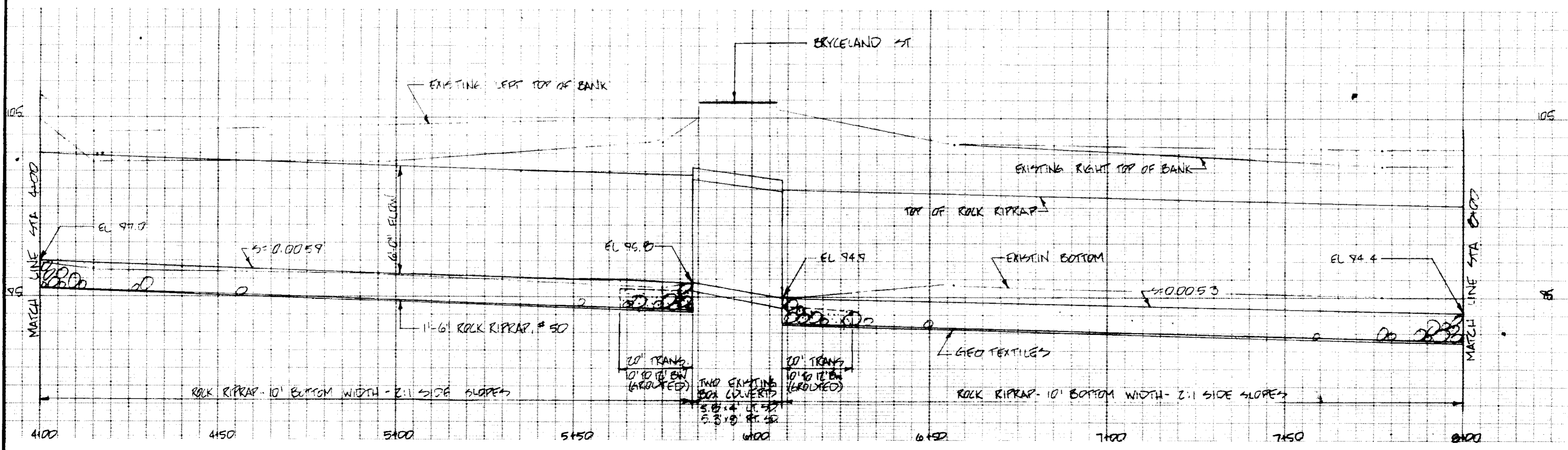
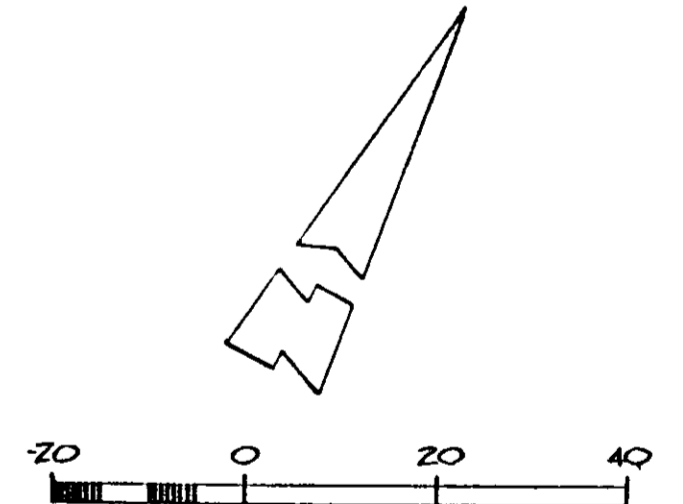
PI STA 4+93.5  
 CURVE DATA  
 Δ = 40° 00'  
 D = 24° 30'  
 R = 232.73'  
 L = 163.17'  
 T = 85.07'  
 C = 159.88'  
 M = 14.10'  
 E = 15.00'

PI STA 6+92  
 CURVE DATA  
 Δ = 12° 30'  
 D = 10° 30'  
 R = 309.71'  
 L = 67.57'  
 T = 33.92'  
 C = 67.43'  
 M = 18.41'  
 E = 1.85'

**TENTATIVE** - SUBJECT TO REVISION



- LEGEND**
- △ TRANSIT STATION
  - PLOTTED POINT
  - SEWER LINE W/ MANHOLE
  - T— TELEPHONE LINE W/ JUNCTION BOX & POLE
  - P— POWER LINE W/ POLE
  - W— WATER LINE W/ METER
  - G— GAS LINE W/ METER
  - \*— EXISTING FENCE LINE
  - +— EXISTING TOE
  - +— EXISTING TOP OF BANK
  - +— APPROX. LIMIT OF CUT
  - WL— APPROX. LIMIT OF WORK
  - /// EARTH FILL
  - CONCRETE GROUT
  - +— EROSION CONTROL BLANKET



VILLAGE SQUARE  
 CITY OF RIDGEAND  
 MADISON COUNTY, MISSISSIPPI  
 EMERGENCY WATERSHED PROJECT  
 PLAN AND PROFILE

**U. S. DEPARTMENT OF AGRICULTURE  
 SOIL CONSERVATION SERVICE**

Designed R.R. NEM	Date 3-85	Approved by
Drawn NEM	3-85	Title
Traced		Title
Checked		Sheet No. 3
		Drawing No. of 6