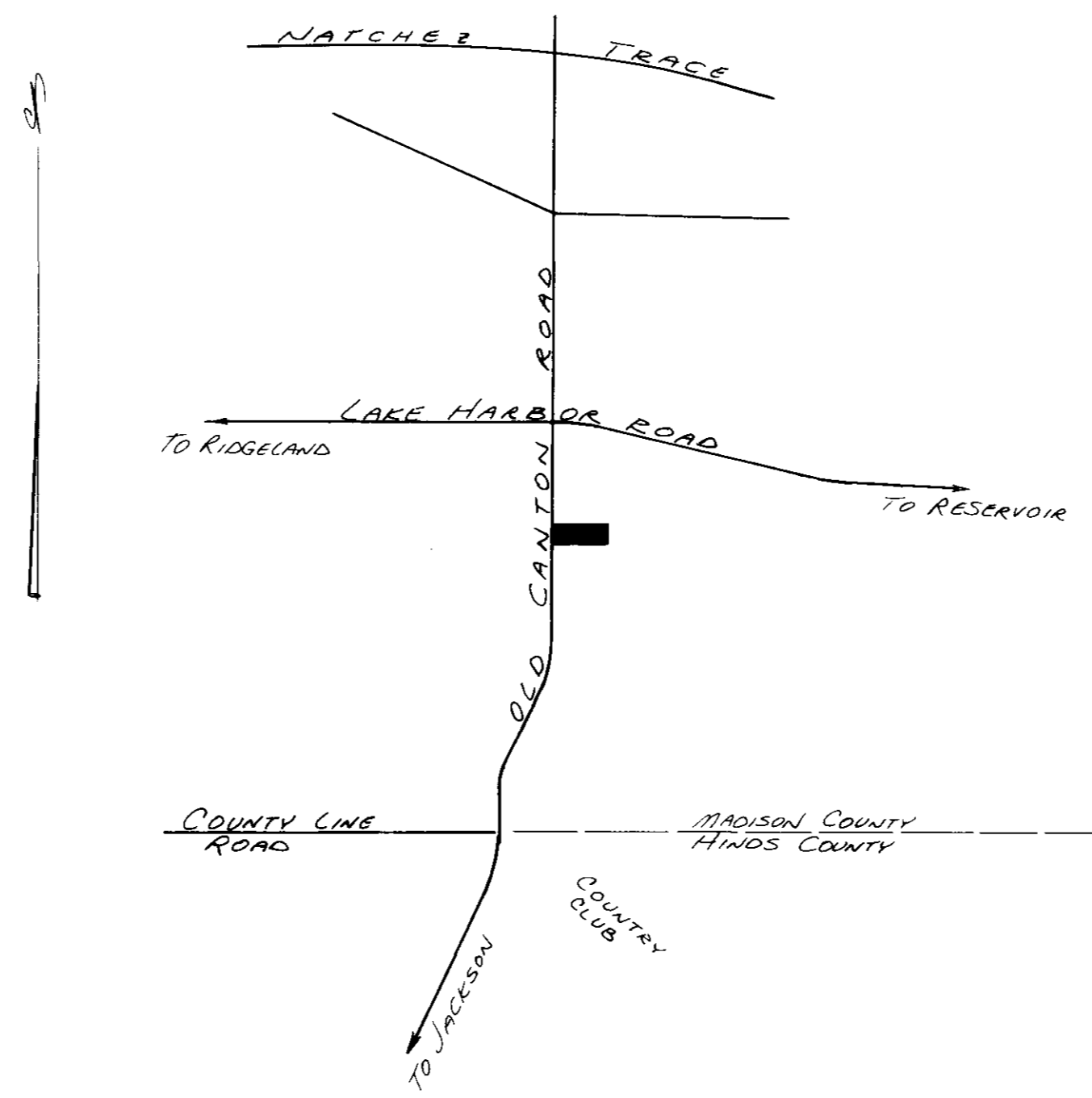


VILLAGE SQUARE PLACE

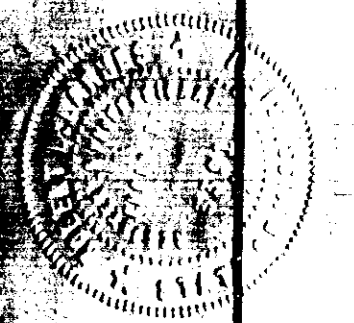
PROPOSED SUBDIVISION
MADISON COUNTY, MISSISSIPPI

ROBERT B. BARNES
CIVIL ENGINEER
JACKSON, MISSISSIPPI



VICINITY MAP
SCALE: 1" = 2000'

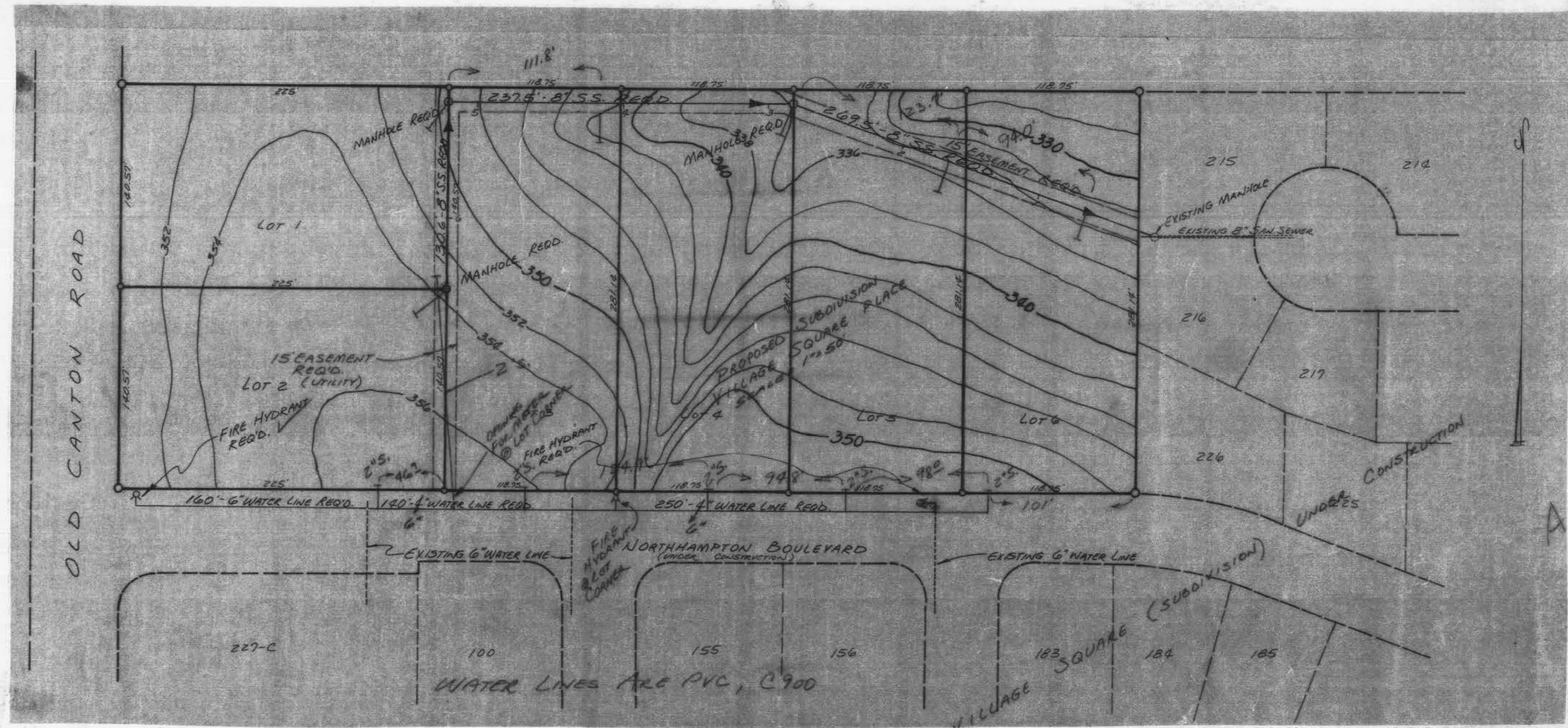
AS BUILT
9-28-59
R.B.B.



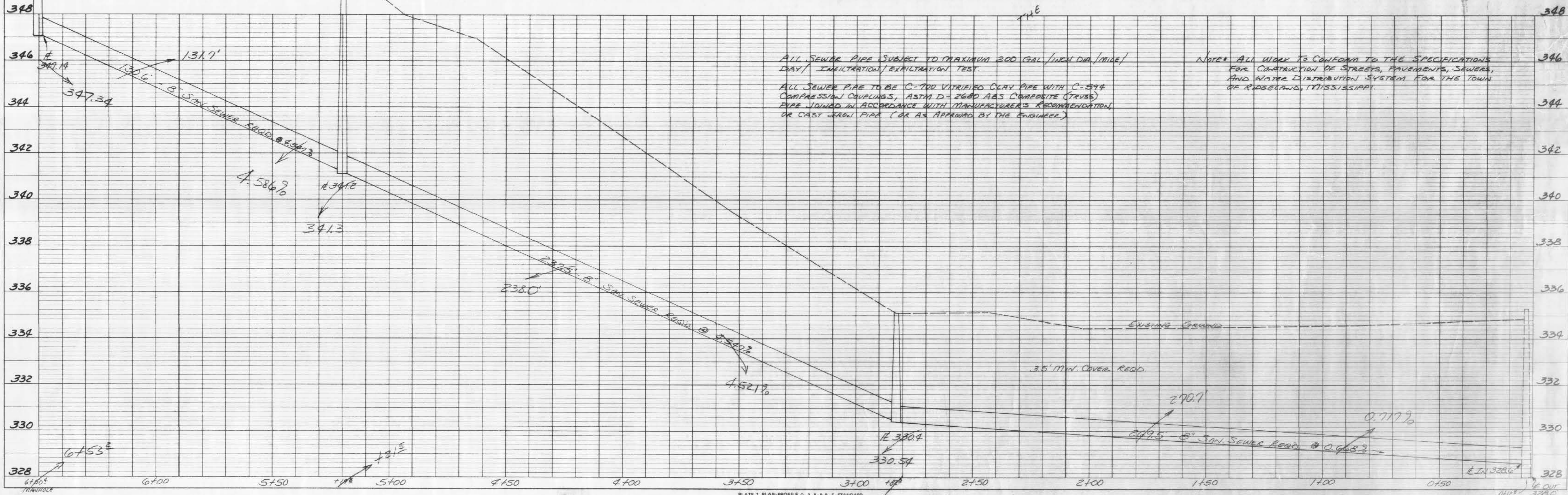
PLAN 1003

DATE	
BY	
APPROVED	
PLANNED	
ALIGNED CHECKED	
NOTE BOOK	
NO.	

DATE	
BY	
APPROVED	
PROFILE	
STRUCTURE NOTING CHG.	
NOTE BOOK	
NO.	



AS BUILT
PLANS
R.B. Bann
9.24.79



ALL SEWER PIPE SUBJECT TO MAXIMUM 200 GAL./INCH DIA./MILE/DAY/ INfiltration/EXfiltration TEST.
ALL SEWER PIPE TO BE C-700 VITRIFIED CLAY PIPE WITH C-594 COMPRESSION COUPLINGS, ASTM D-2680 ABS COMPOSITE (TRUSS) PIPE JOINED IN ACCORDANCE WITH MANUFACTURER'S RECOMMENDATION, OR CAST IRON PIPE (OR AS APPROVED BY THE ENGINEER).

NOTE: ALL WORK TO CONFORM TO THE SPECIFICATIONS FOR CONSTRUCTION OF STREETS, PAVEMENTS, SEWERS, AND WATER DISTRIBUTION SYSTEM FOR THE TOWN OF RIDGELAND, MISSISSIPPI.

