

WATERLAND U.S.A.

RIDGELAND, MISS.

SITE UTILITY PLANS

MAY 1984

*Constructed
without MSH Approval*

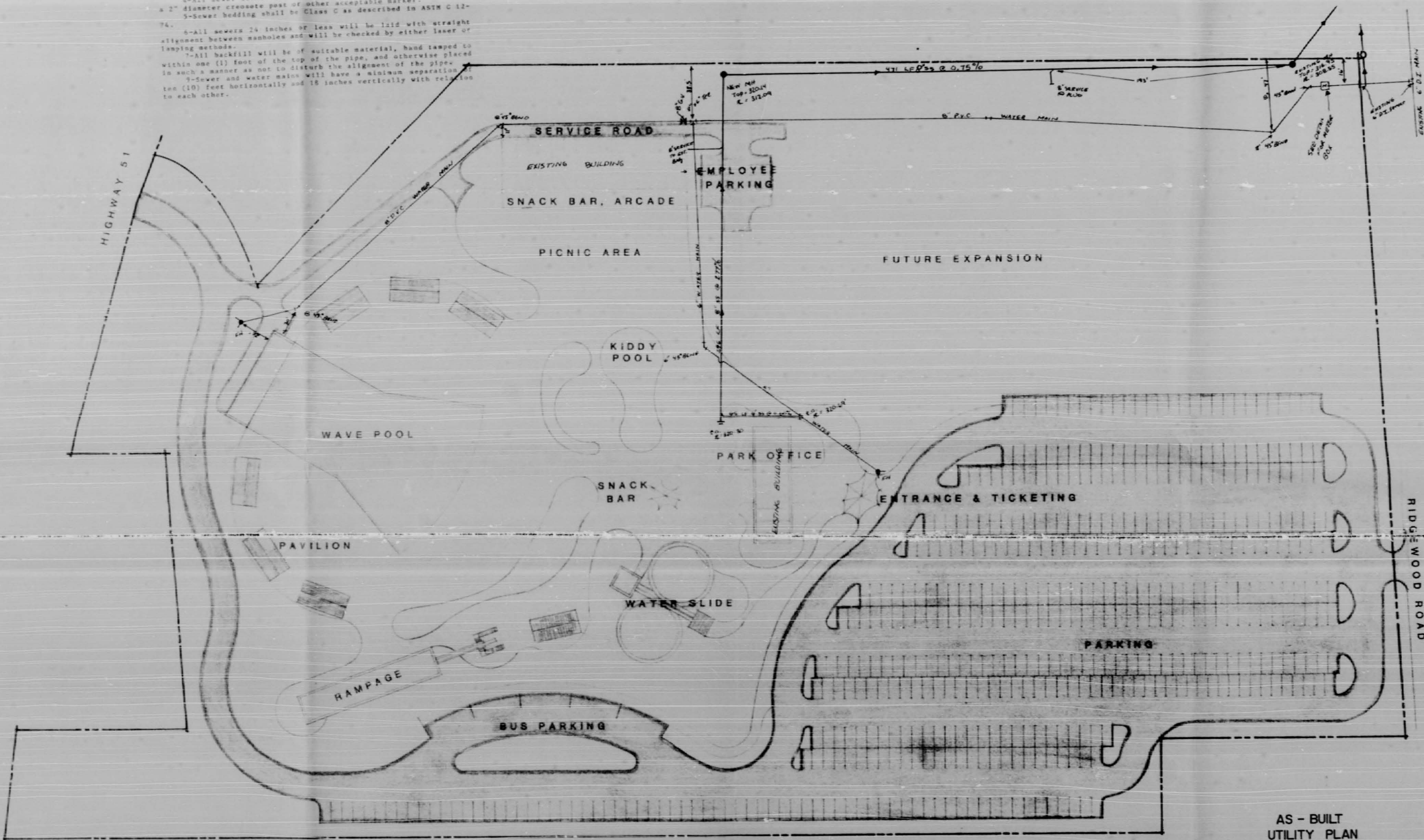
BY: CENTRAL MISSISSIPPI ENGINEERING

JACKSON, MISS.

6473

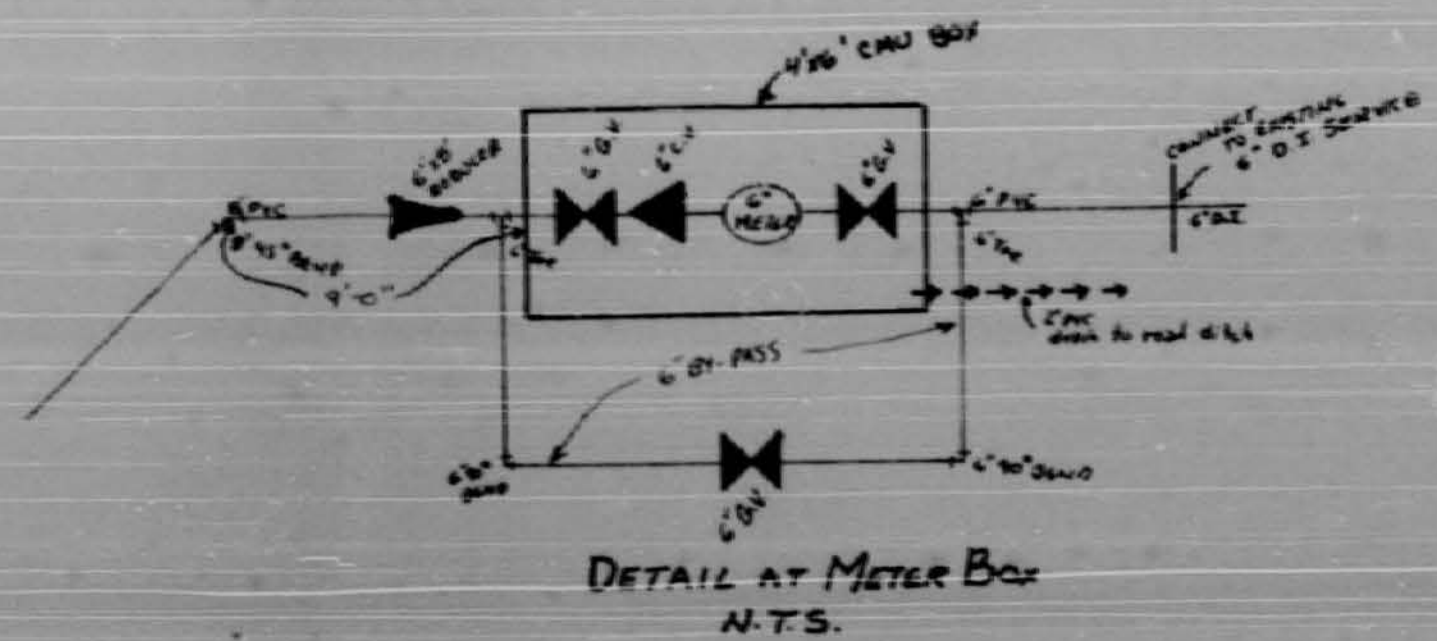
SEWER SPECIFICATIONS

- 1-All sewer mains and services shall be Extra Strength Vitrifed Clay Pipe (ASTM C-700) or ABS sewer pipe (ASTM D-2680).
- 2-Manholes to be precast concrete conforming to ASTM C-478.
- 3-Manhole castings to be Harper No. 1, MSPE Standard, or approved equal.
- 4-All sewer services to be marked at the property line with a 2" diameter crosscut post or other acceptable marker.
- 5-Sewer bedding shall be Class C as described in ASTM C 12-74.
- 6-All sewers 24 inches or less will be laid with straight alignment between manholes and will be checked by either laser or lamping methods.
- 7-All backfill will be of suitable material, hand tamped to within one (1) foot of the top of the pipe, and otherwise placed in such a manner as not to disturb the alignment of the pipe.
- 8-Sewer and water mains will have a minimum separation of ten (10) feet horizontally and 18 inches vertically with relation to each other.



WATER SPECIFICATIONS

- 1-Water mains are to be thoroughly flushed and sterilized in accordance with ANSI Standard C-801. Proof of two (2) satisfactory bacteriological tests from the Mississippi State Board of Health Laboratory.
- 2-Water mains are to be pressure tested in accordance with ASWA Standard C-600-77, Section 4, results to be furnished to the Engineer.
- 3-Water mains to be Class 160 PVC, push on joints, NSF approved, with 3/4" aluminum cover.
- 4-Fire Hydrants to be 3-way traffic model, Mueller A-423 or with NSF threads.
- 5-Gate valves to be standard ASWA with non-rising stems, iron bodies, bronze mounted and tested to 350 psi, Mueller or American.
- 6-All services shall include Mueller corporation stop at the main, Mueller Mark II curb stop, and minimum 3/4" polybutylene tubing.
- 7-Check valve shall be Model 50 by American, iron body, revolving disc.
- 8-Tapoff Meter shall be BADGER RECORDALL by Badger Meter Co., Inc. 6" Turbo Meter with straight flow design.



DETAIL AT METER BOX
N.T.S.



AS - BUILT
UTILITY PLAN
THIS DRAWING CORRECTED
AS BUILT
DATE 5-14-84
SIGNED: *K.P.L.*



SCALE 1" = 40'0"

0356

associated
planning
group inc.
landscape architects, planners
po box 607 Canton, Mississippi

Waterland
*****USA*****
RIDGELAND, MISSISSIPPI

DESIGN BY THE/LEAD
DRAWN BY LWA/LEAD
DATE 1-1-1983
REVISIONS
JOB NO.
204.97