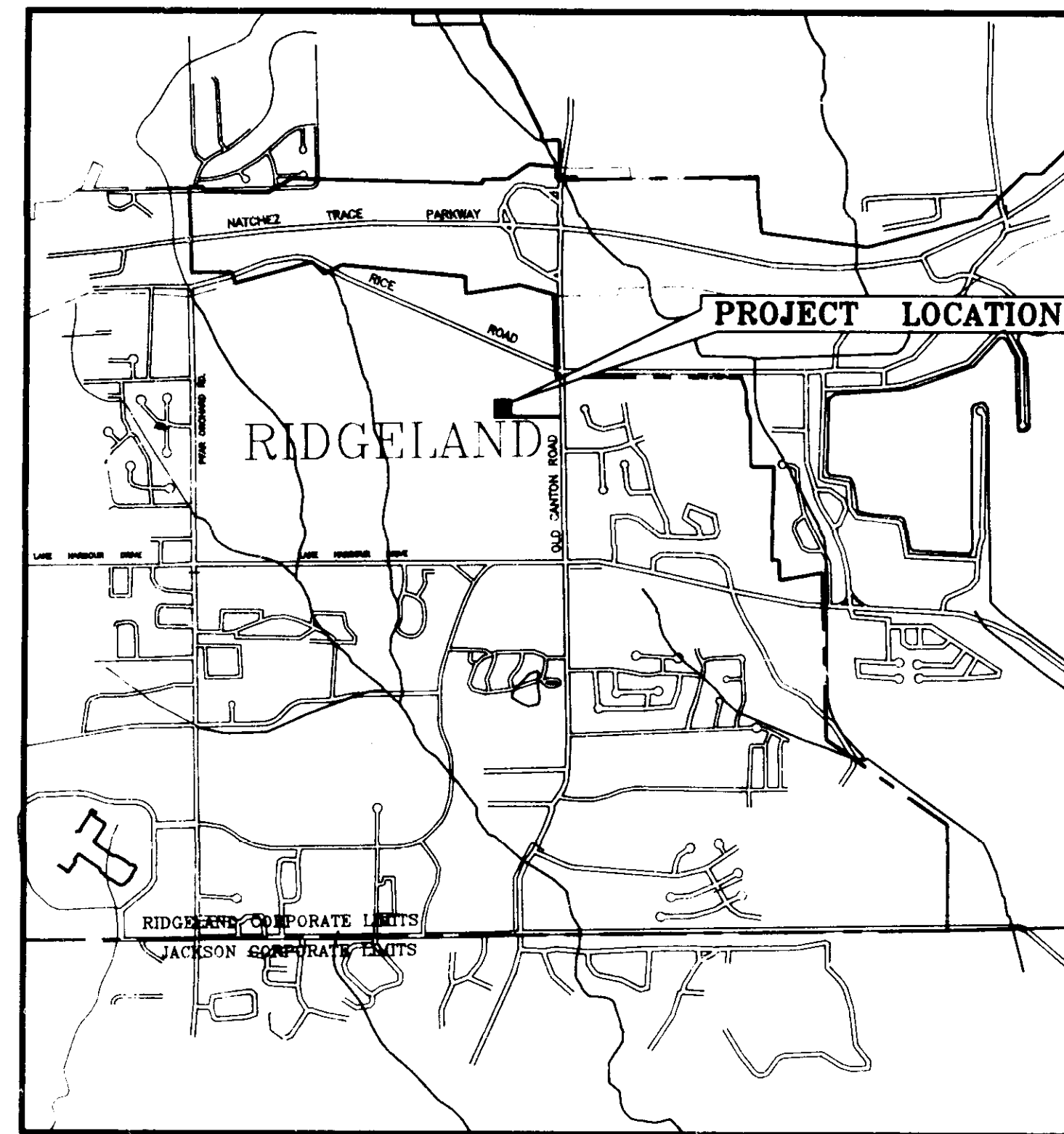


CITY OF RIDGELAND, MISSISSIPPI
ELEVATED WATER STORAGE FACILITY NO.3

Mayor:
Gene F. McGee

Mayor Pro Tem:
Harvey Carr, Jr.

City Attorney:
Jerry Mills



VICINITY MAP

Aldermen:
Brian Barcellona
Al Bible
Harvey Carr, Jr.
Linda Davis
Daryl Smith

Public Works Director:
Sam Vinson, P.E.

City Clerk:
Michael McPhearson

Fire Chief:
Elmer Waits

Police Chief:
Charles Newell

DECEMBER , 1991

WAGGONER ENGINEERING, INC.
CONSULTING ENGINEERS INC.
JACKSON / BRANDON, MISSISSIPPI

PRELIMINARY

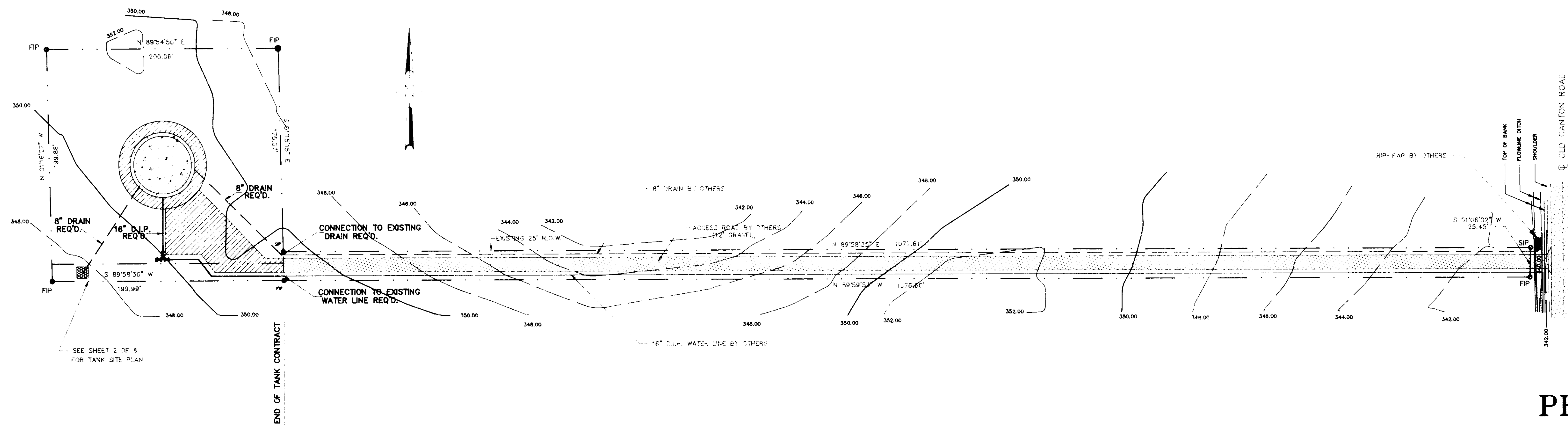
PWP-05003

INDEX TO DRAWINGS

SHEET NO.	TITLE
1	TITLE SHEET
2	PROJECT LAYOUT, INDEX AND GENERAL CONSTRUCTION NOTES
3	SITE PLAN
4	1,000,000 GALLON PEDESTAL TYPE SPHEROID WATER STORAGE TANK
5	ALTERNATE NO. 1 - 1,000,000 GALLON FLUTED COLUMN WATER STORAGE TANK
6	ALTERNATE NO. 2 - 1,000,000 GALLON MULTI-LEG TYPE WATER STORAGE TANK
7	DETAILS, PIPING AND INSTRUMENTATION
8	STANDARD FENCE DETAILS
9	RADIO SUPERVISORY CONTROL AND DATA ACQUISITION SYSTEM

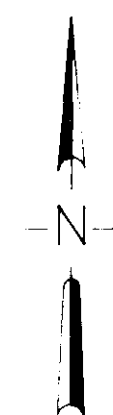
GENERAL CONSTRUCTION NOTES

- Any existing utility locations shown on plans are approximate only. The Contractor shall coordinate the location (horizontal and vertical) of any existing utilities (power, telephone, gas, water, sewer, etc.) with the appropriate utility company before construction begins.
- Any utility line or service line encountered during construction, whether shown on plans or not, shall be protected by the Contractor and any repairs necessary due to damage to same by the Contractor shall be at no additional cost to the Owner.
- The Contractor shall be responsible for verifying horizontal and vertical clearances on any utility service crossings required before installation.
- The Contractor shall fertilize and seed all areas where the existing vegetation was removed or disturbed during construction and not required to be solid sodded, paved, or graveled.
- Unsuitable bedding, backfill or site subgrade material which may be encountered shall be excavated to the limits required and backfilled with acceptable material to the lines and grades shown on the plans.
- Any TBM's which are or may be in conflict with construction activities shall be relocated by Engineer prior to commencement of construction in the immediate area.
- All detailed construction staking will be by Contractor at no cost to the Owner.
- The Contractor shall be responsible for completing all sampling and testing of materials incorporated into the project and for submission of same to Engineer for review. Prior use test results, manufacturer's certificates, or proposed mix designs shall be submitted to the Engineer for review before incorporation into project. This shall include backfill, concrete, asphalt, steel, paint, piping, fencing materials, aggregates, seed and other items as specified by the Engineer. All testing shall be an absorbed cost item.
- All testing certifications shall state that the subject material meets the specified quality, grade, purity, class or weight, or that the subject material meets or exceeds the requirement of the applicable ASTM, AASHTO, MSHD or other standards. Certifications shall be submitted to the Engineer prior to incorporation of the subject material into the project.

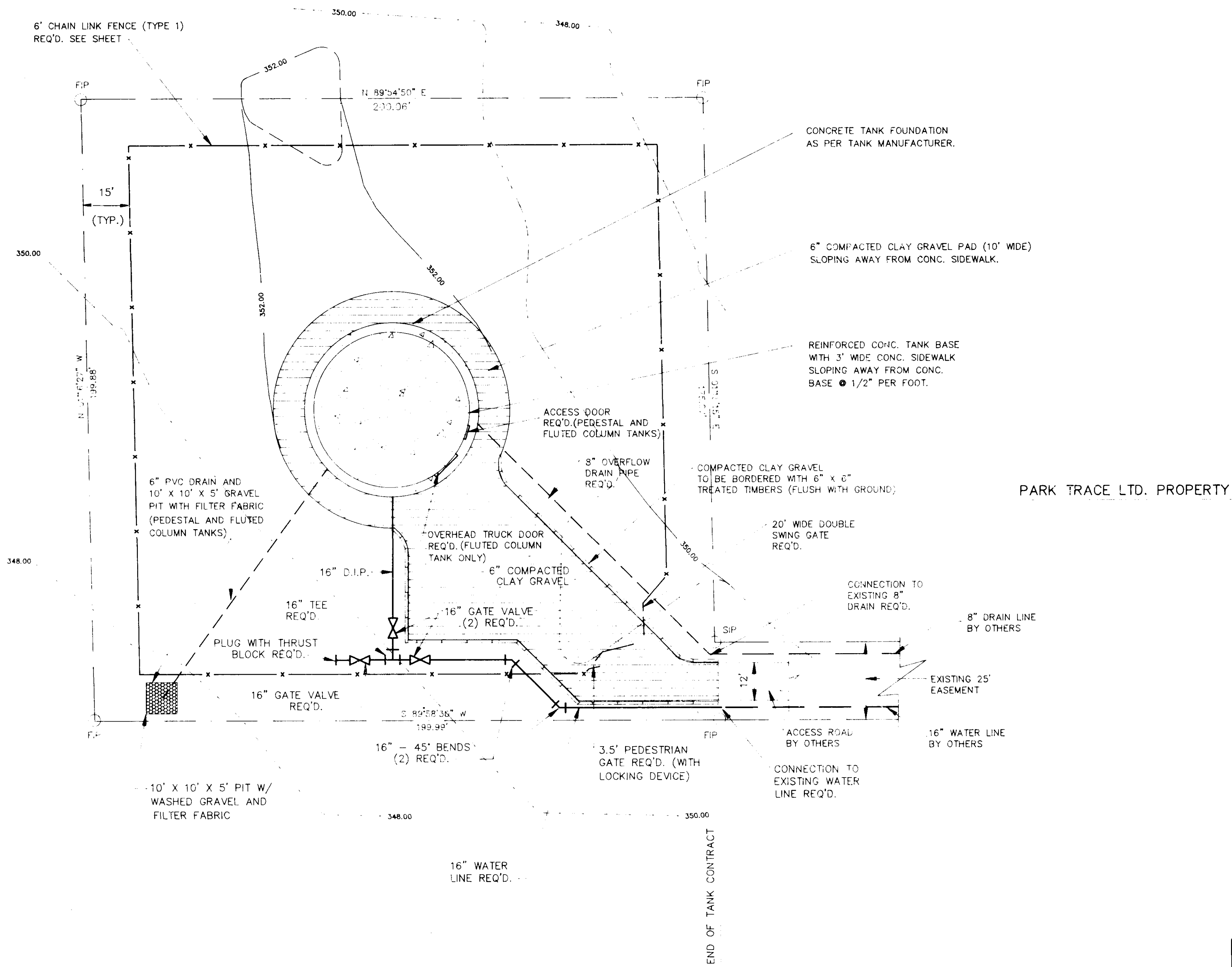


PRELIMINARY

CITY OF RIDGELAND, MISSISSIPPI			
ELEVATED WATER STORAGE FACILITY NO.3			
PROJECT LAYOUT, INDEX AND GENERAL CONSTRUCTION NOTES			
<small>WAGGONER ENGINEERING, INC. Consulting Engineers - Jackson, Mississippi</small>			
<small>DRAWN BY:</small> C.S.	<small>DATE:</small> 12-6-91	<small>SHEET NUMBER</small>	
<small>REVIEWED BY:</small> B.M.	<small>SCALE:</small> 1" = 50'	2 OF 9	



PARK TRACE LTD. PROPERTY



PRELIMINARY

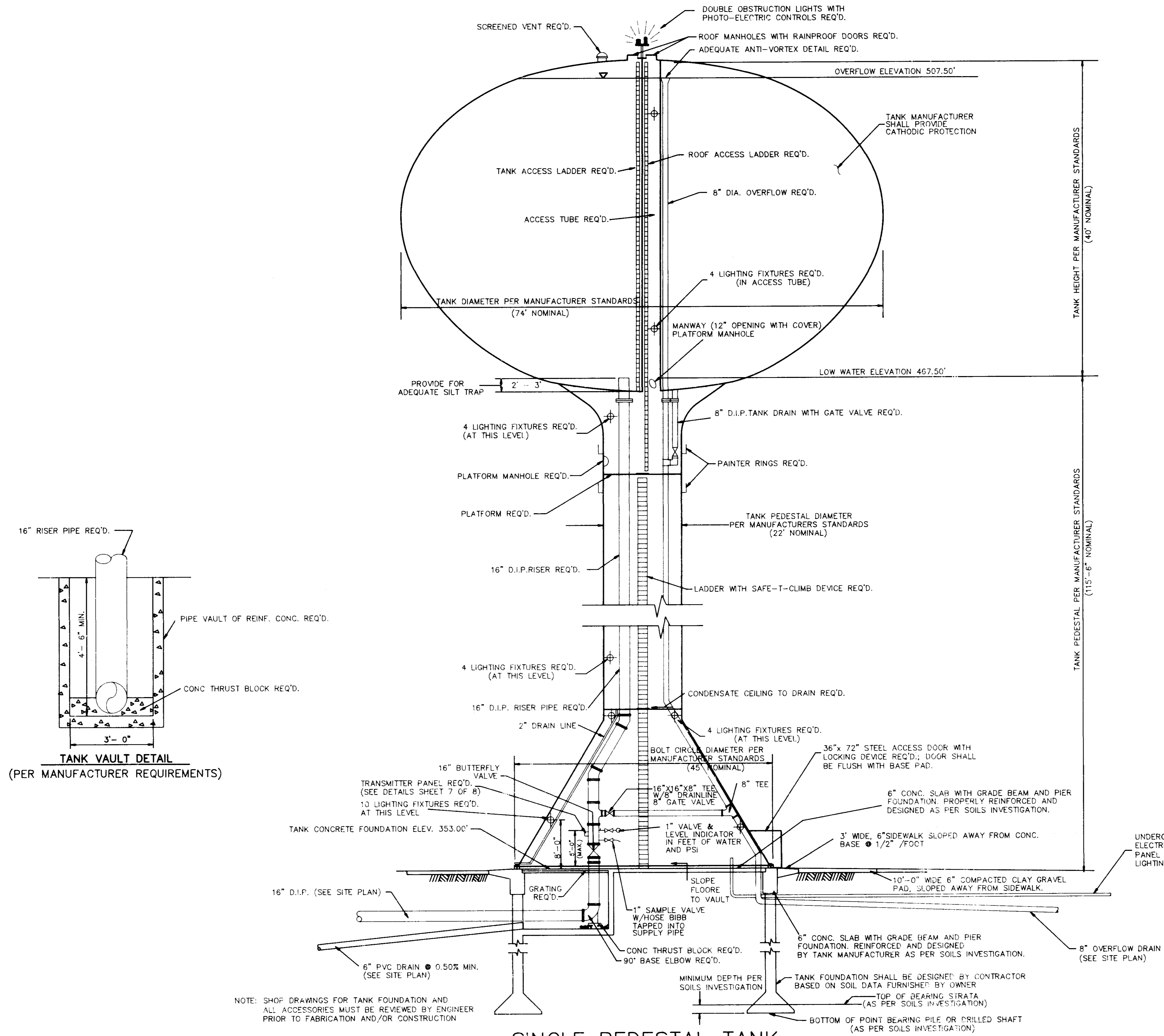
CITY OF RIDGELAND, MISSISSIPPI
ELEVATED WATER STORAGE FACILITY NO.3

SITE PLAN

WAGGONER ENGINEERING, INC.
Consulting Engineers - Jackson, Mississippi

DRAWN BY: C.S.	DATE: 12-6-91	SHEET NUMBER
REVIEWED BY: E.M.	SCALE: 1" = 20'	3 OF 9

1,000,000 GALLON NOMINAL CAPACITY

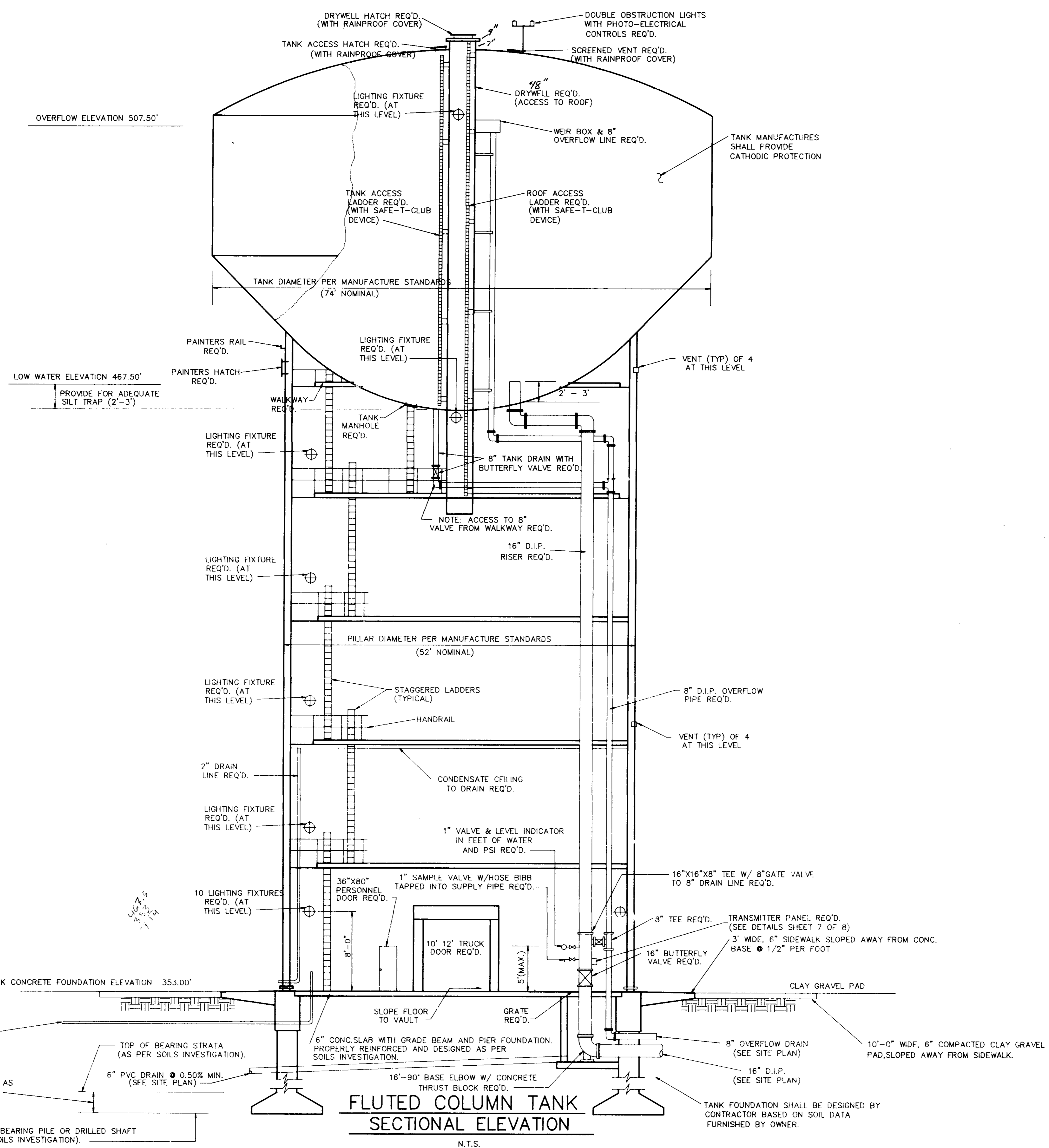


NOTE: SHOP DRAWINGS FOR TANK FOUNDATION AND ALL ACCESSORIES MUST BE REVIEWED BY ENGINEER PRIOR TO FABRICATION AND/OR CONSTRUCTION

SINGLE PEDESTAL TANK
SECTIONAL ELEVATION
N.T.S.

PRELIMINARY

CITY OF RIDGELAND, MISSISSIPPI		
ELEVATED WATER STORAGE FACILITY NO. 3		
1,000,000 GALLON PEDESTAL TYPE SPHEROID WATER STORAGE TANK		
WAGGONER ENGINEERING, INC. Consulting Engineers - Jackson, Mississippi		
DRAWN BY: C.S.	DATE: 12-8-91	SHEET NUMBER
REVIEWED BY: B.M.	SCALE: 1"=20'	4 OF 9



NOTE: SHOP DRAWINGS FOR TANK FOUNDATION AND ALL ACCESSORIES MUST BE REVIEWED BY ENGINEER PRIOR TO FABRICATION AND/OR CONSTRUCTION

UNDERGROUND ELECTRICAL SERVICE W/ RIGID CONDUIT REQ'D. ELECTRICAL SERVICE TO INCLUDE ALL WIRING TO A BREAKER PANEL LOCATED ADJACENT TO THE ACCESS DOOR, AND ALL LIGHTING AND WIRING WITH TANK AS SHOWN.

MINIMUM DEPTH (PER AS SOILS INVESTIGATION).

BOTTOM OF POINT BEARING PILE OR DRILLED SHAFT (AS PER SOILS INVESTIGATION).

**FLUTED COLUMN TANK
SECTIONAL ELEVATION**

N.T.S.

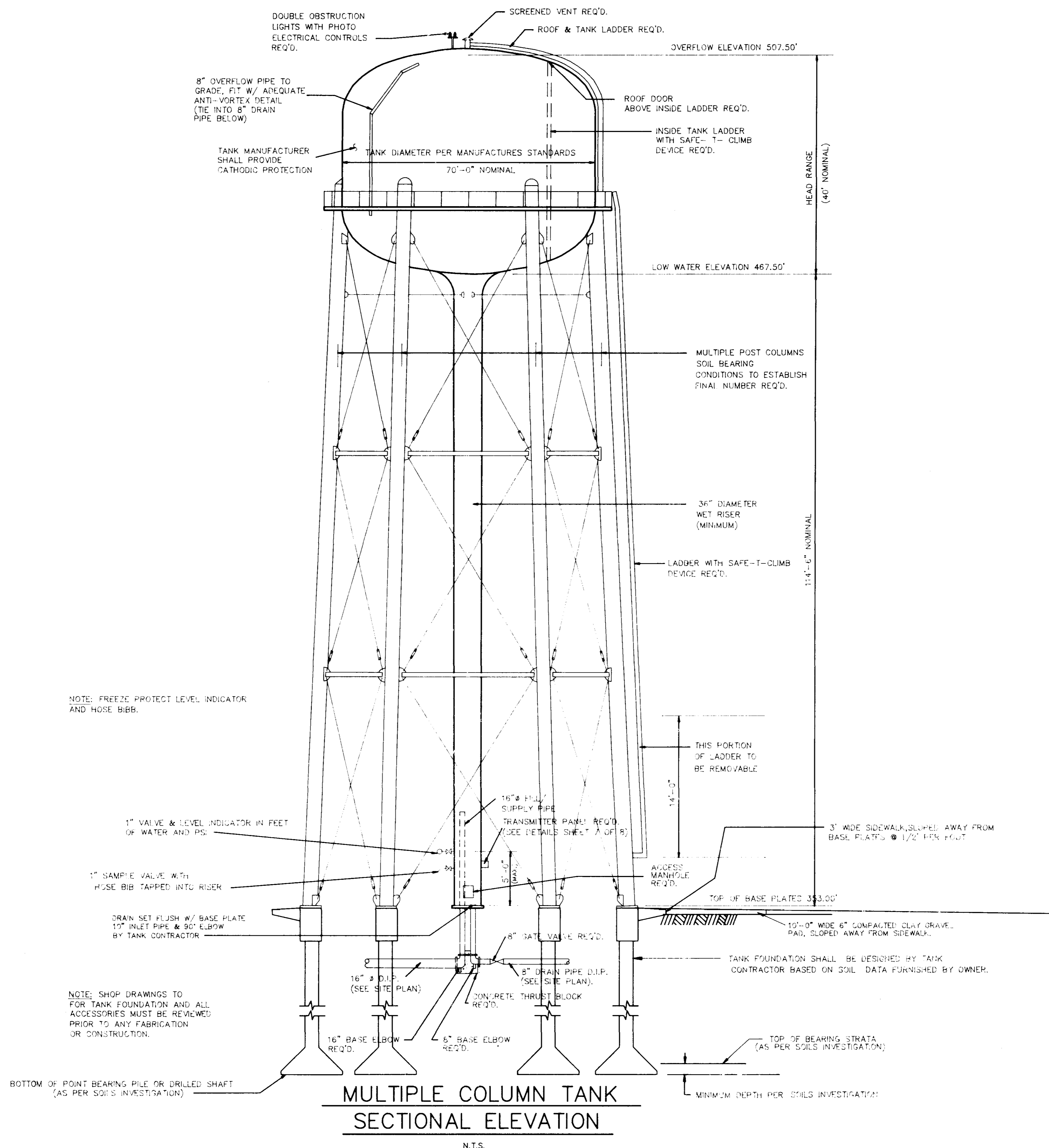
PRELIMINARY

CITY OF RIDGELAND, MISSISSIPPI
ELEVATED WATER STORAGE FACILITY NO. 3
 ALTERNATE NO. 1
**1,000,000 GALLON FLUTED COLUMN
 WATER STORAGE TANK**

WAGGONER ENGINEERING, INC.
 Consulting Engineers - Jackson, Mississippi

DRAWN BY: T.A.C. DATE: 12-08-1991 SHEET NUMBER
 REVIEWED BY: R.M. SCALE: 1"=20' **5 OF 9**

1,000,000 GALLON NOMINAL CAPACITY



NOTE: FREEZE PROTECT LEVEL INDICATOR AND HOSE BIBB.

1" VALVE & LEVEL INDICATOR IN FEET OF WATER AND PS.

1" SAMPLE VALVE WITH HOSE BIB TAPPED INTO RISER

DRAIN SET FLUSH W/ BASE PLATE 10" INLET PIPE & 90° ELBOW BY TANK CONTRACTOR

NOTE: SHOP DRAWINGS TO FOR TANK FOUNDATION AND ALL ACCESSORIES MUST BE REVIEWED PRIOR TO ANY FABRICATION OR CONSTRUCTION.

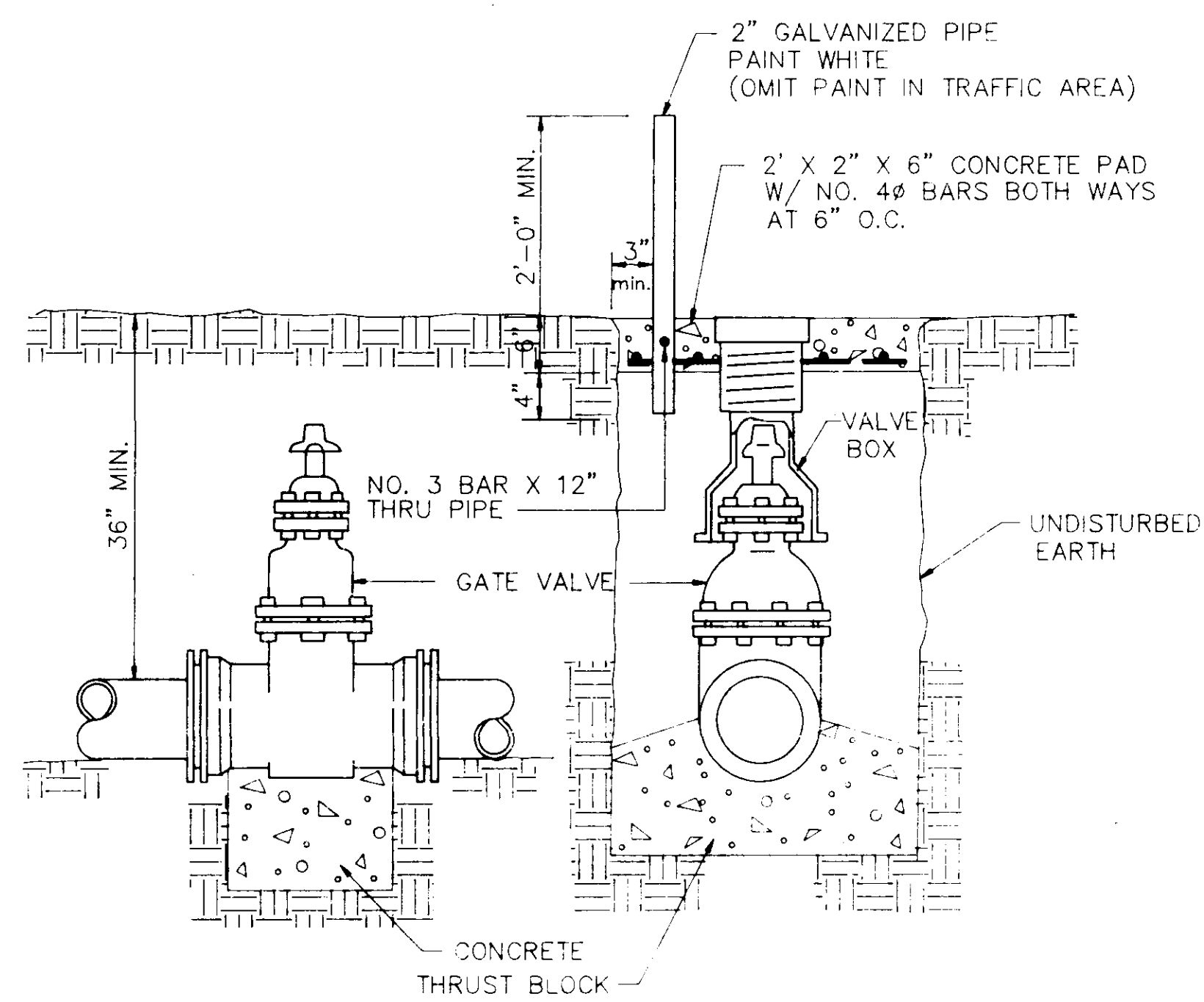
BOTTOM OF POINT BEARING PILE OR DRILLED SHAFT (AS PER SOILS INVESTIGATION)

MULTIPLE COLUMN TANK SECTIONAL ELEVATION

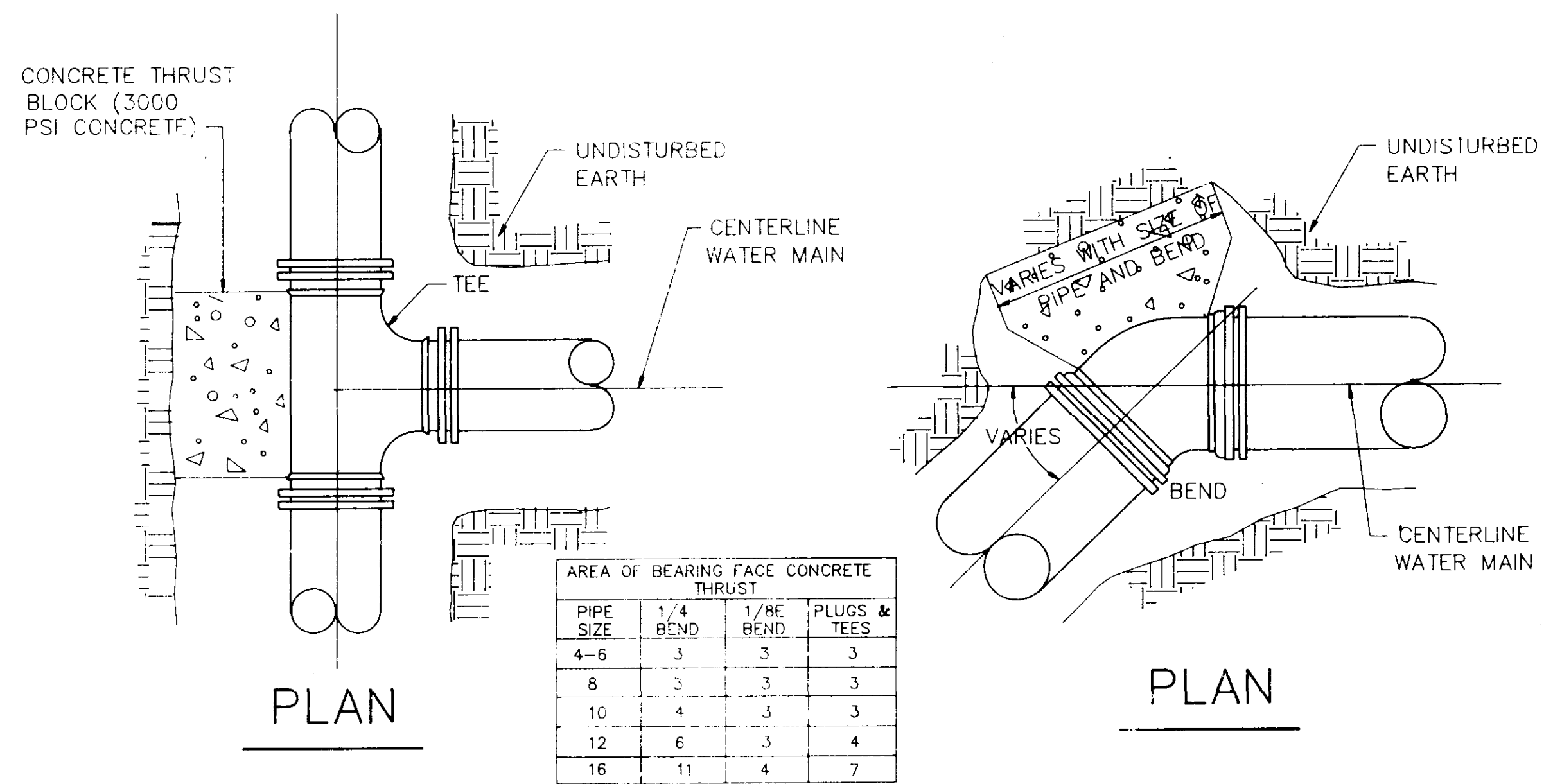
N.T.S.

PRELIMINARY

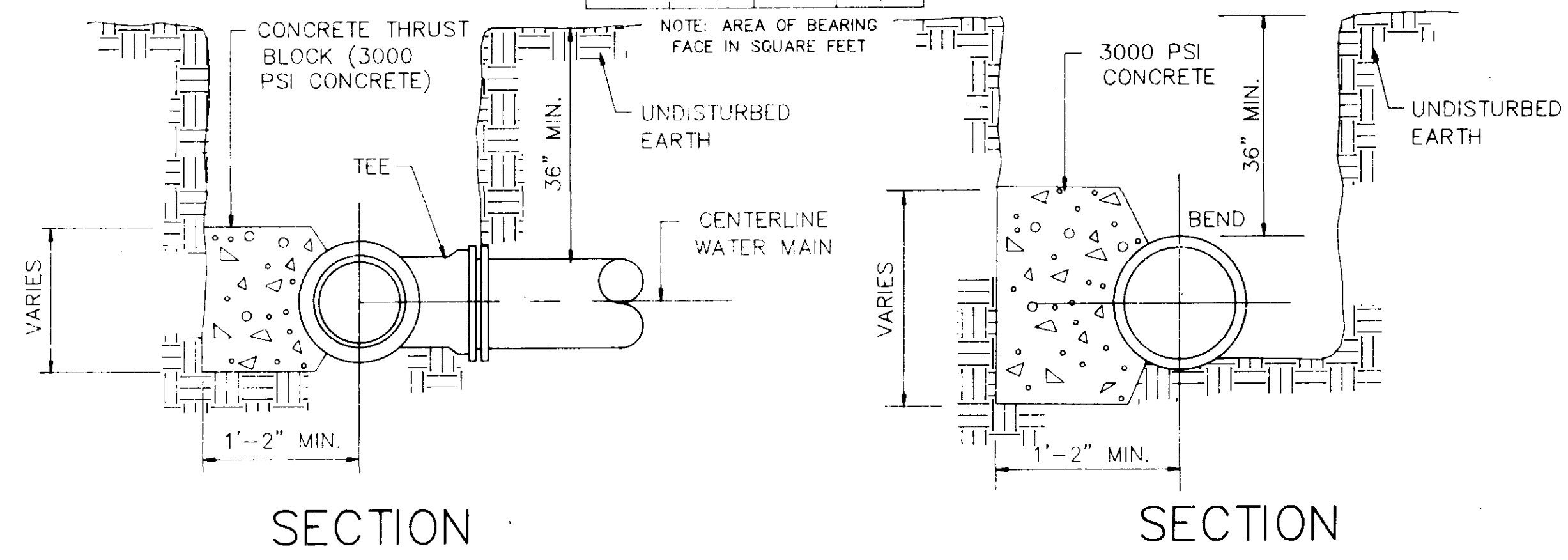
CITY OF RIDGELAND, MISSISSIPPI		
ELEVATED WATER STORAGE FACILITY NO. 3		
ALTERNATE NO. 2		
1,000,000 GALLON MULTI-LEG TYPE WATER STORAGE TANK		
WAGGONER ENGINEERING, INC. Consulting Engineers - Jackson, Mississippi		
DRAWN BY: C.S.	DATE: 12-8-91	SHEET NUMBER
REVIEWED BY: B.M.	SCALE: AS SHOWN	6 OF 9



ELEVATION SECTION
TYPICAL VALVE & BOX

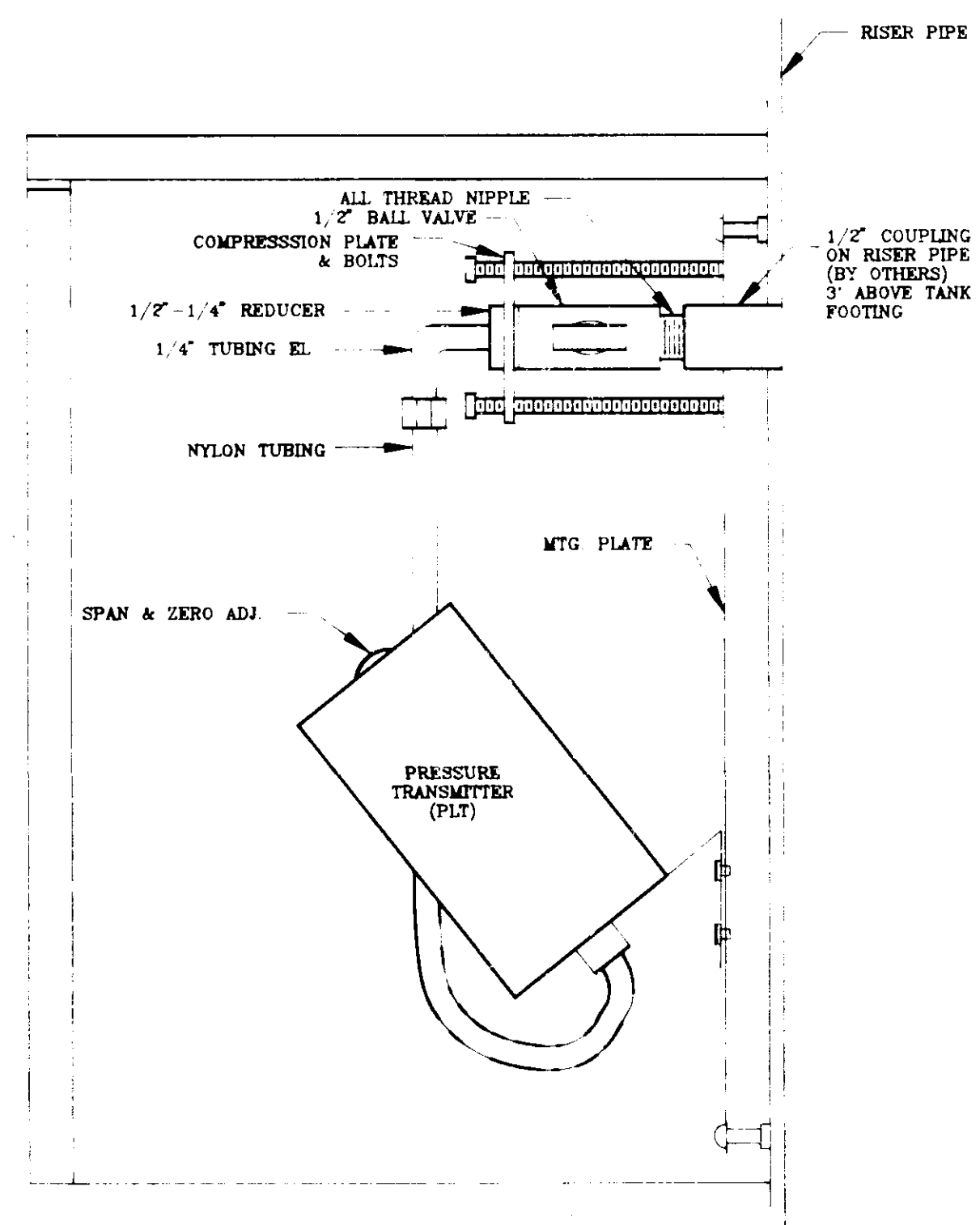


PLAN PLAN



SECTION SECTION

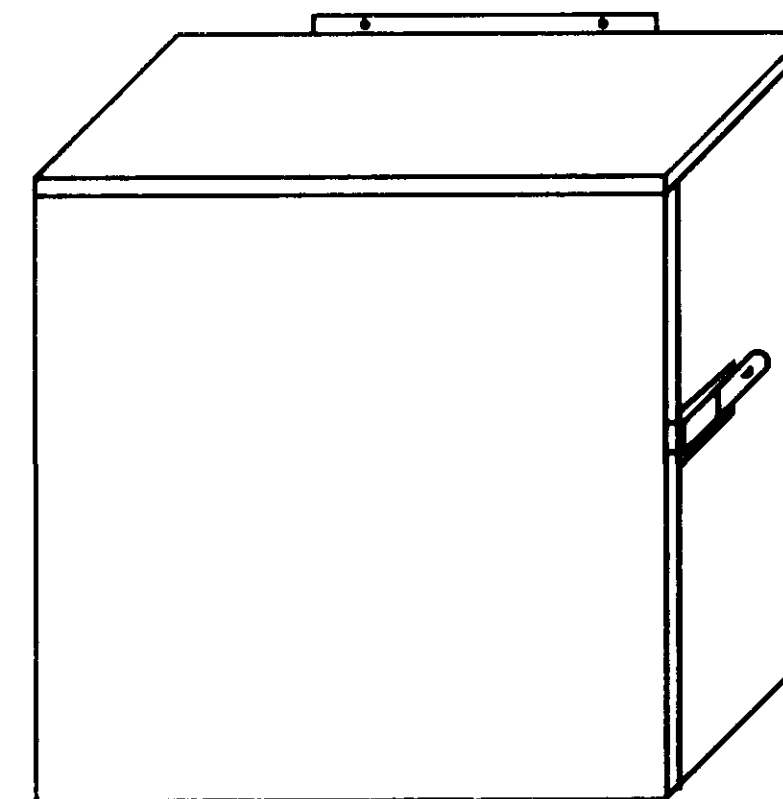
BLOCKING DETAILS FOR TEES & BENDS



- NOTES:
1. CENTERLINE OF HOLE IN REAR OF ENCLOSURE 2 1/2" FROM TOP.

TRANSMITTER PANEL MOUNTING DETAIL

- NOTES:
1. ENCLOSURE TO HAVE 1/2" INSULATION ON ALL INTERIOR SURFACES. INSULATION AT REAR OF ENCLOSURE TO BE BEHIND MOUNTING PANEL.
 2. ENCLOSURE IS TO BE SECURED TO RISER PIPE BY INTERNAL PIPING AS SHOWN ON MOUNTING DETAIL PAGE 1PS.



NEMA 3R ENCLOSURE (10"H X 8"W X 6"D)

TRANSMITTER PANEL PHYSICAL LAYOUT

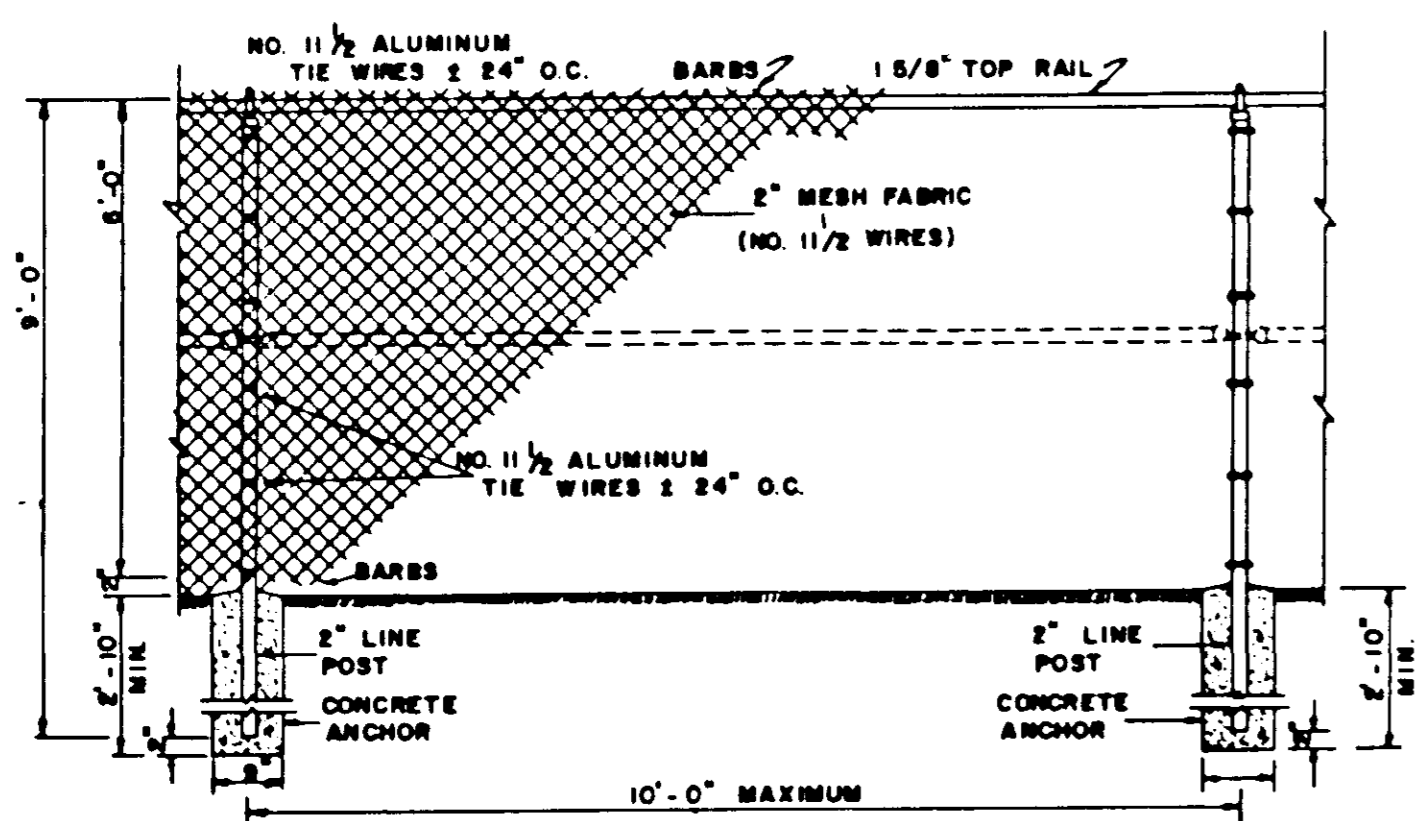
PRELIMINARY

CITY OF RIDGELAND, MISSISSIPPI
ELEVATED WATER STORAGE FACILITY NO.3

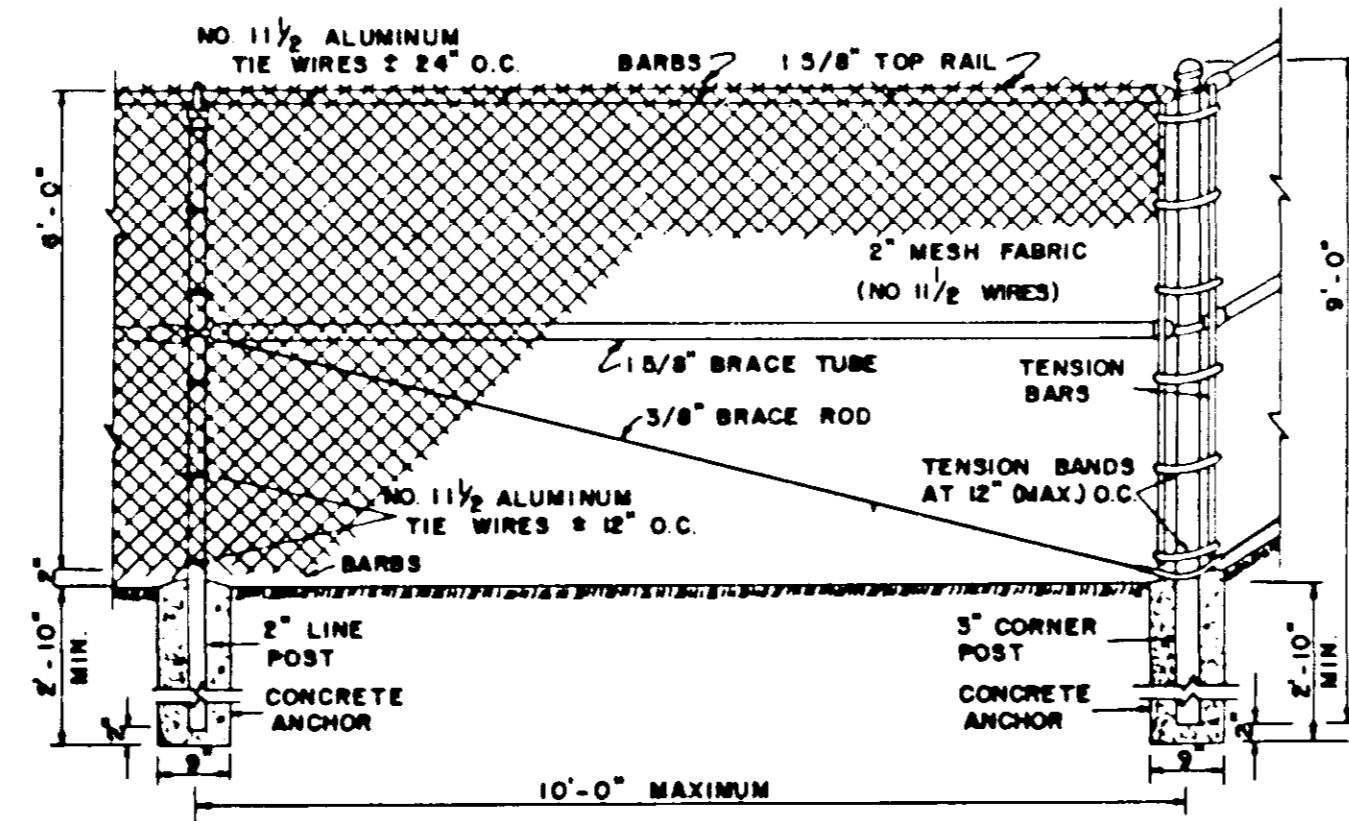
DETAILS, PIPING AND INSTRUMENTATION

WAGGONER ENGINEERING, INC.
Consulting Engineers - Jackson, Mississippi

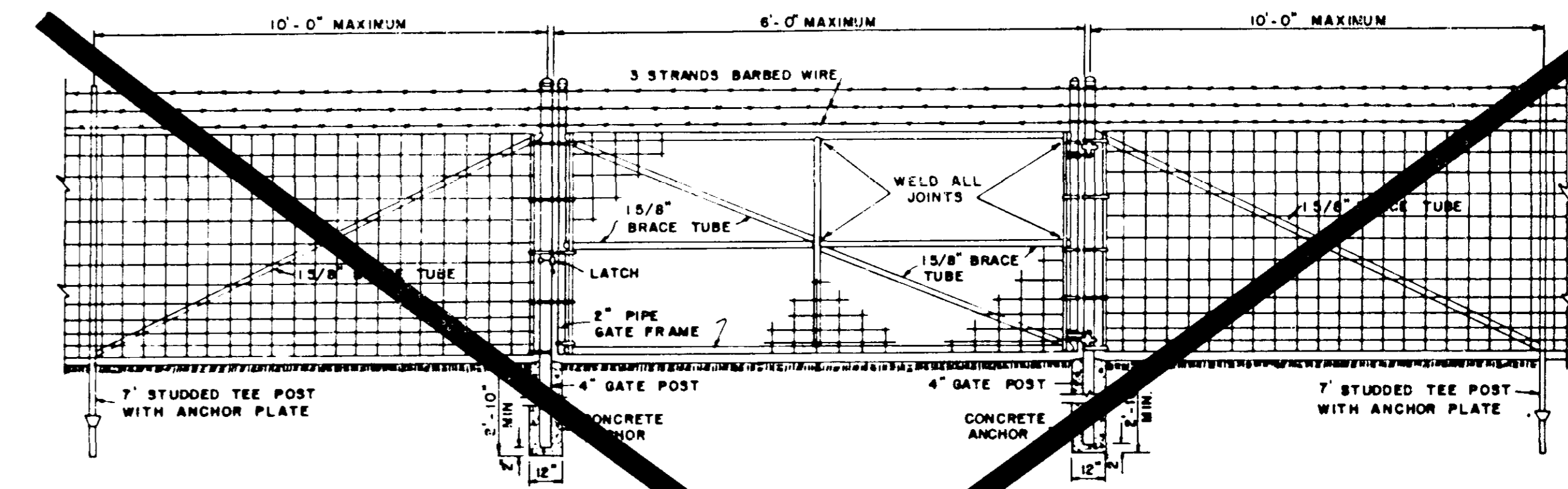
DRAWN BY: C.S.	DATE: 12-8-91	SHEET NUMBER
REVIEWED BY: B.M.	SCALE: N.T.S.	7 OF 9



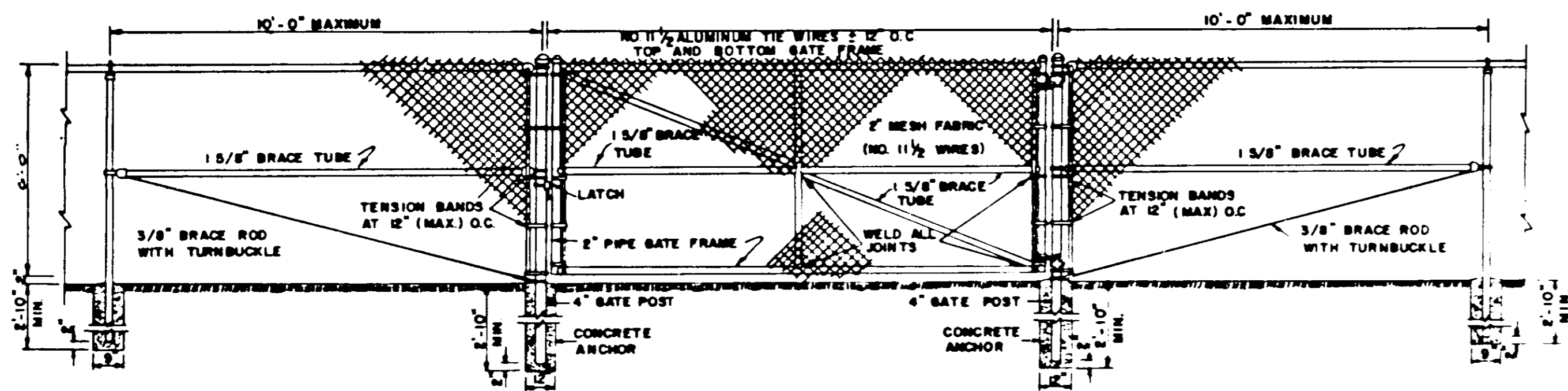
LINE BAY
CHAIN LINK FENCE
SCALE: 1/2" = 1'-0"



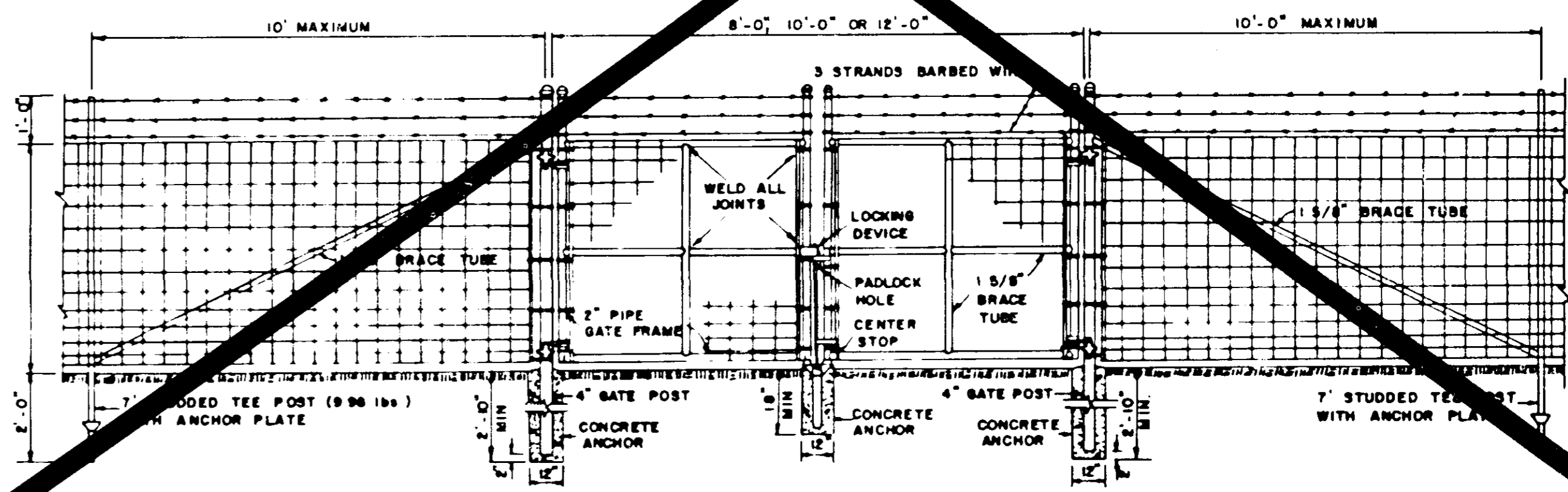
CORNER BAY
CHAIN LINK FENCE
SCALE: 1/2" = 1'-0"



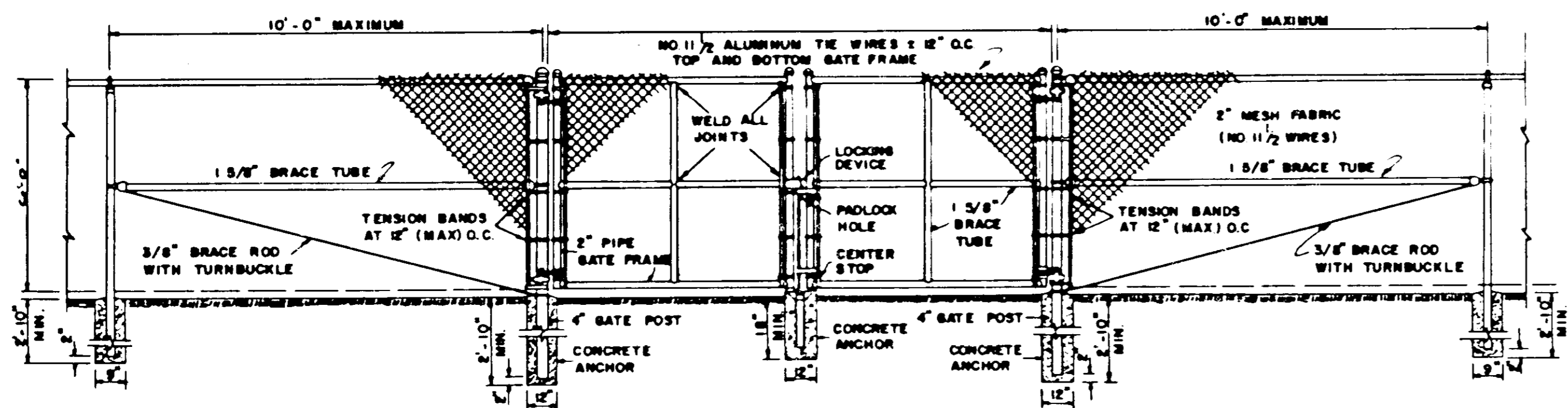
SINGLE SWING GATE
WOVEN WIRE FABRIC FENCE



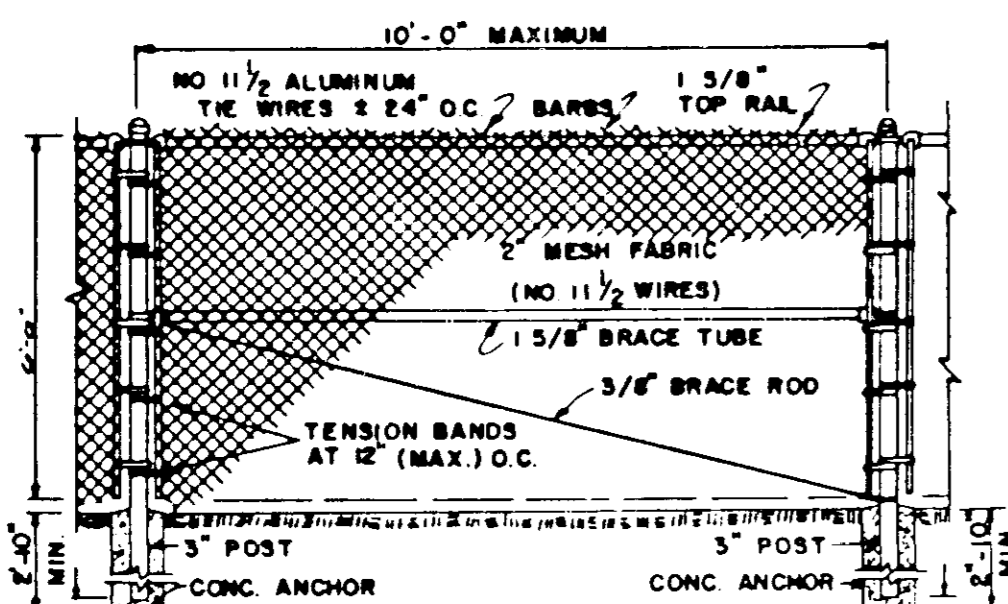
SINGLE SWING GATE
CHAIN LINK FENCE
SCALE: 3/8" = 1'-0"



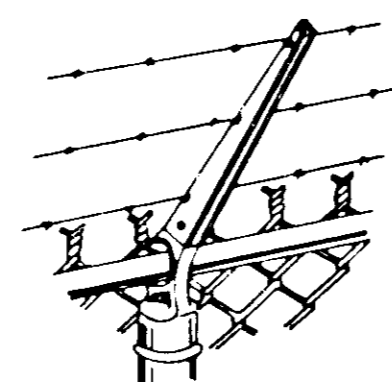
DOUBLE SWING GATE
WOVEN WIRE



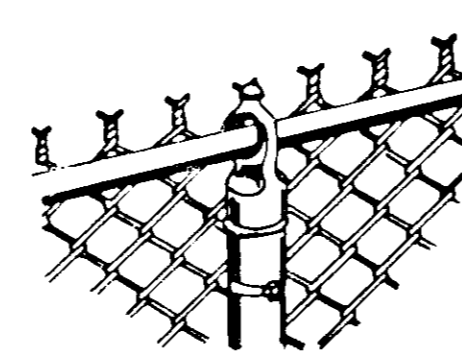
DOUBLE SWING GATE
CHAIN LINK FENCE
SCALE: 3/8" = 1'-0"



INTERMEDIATE BRACE BAY
CHAIN LINK FENCE
SCALE: 3/8" = 1'-0"

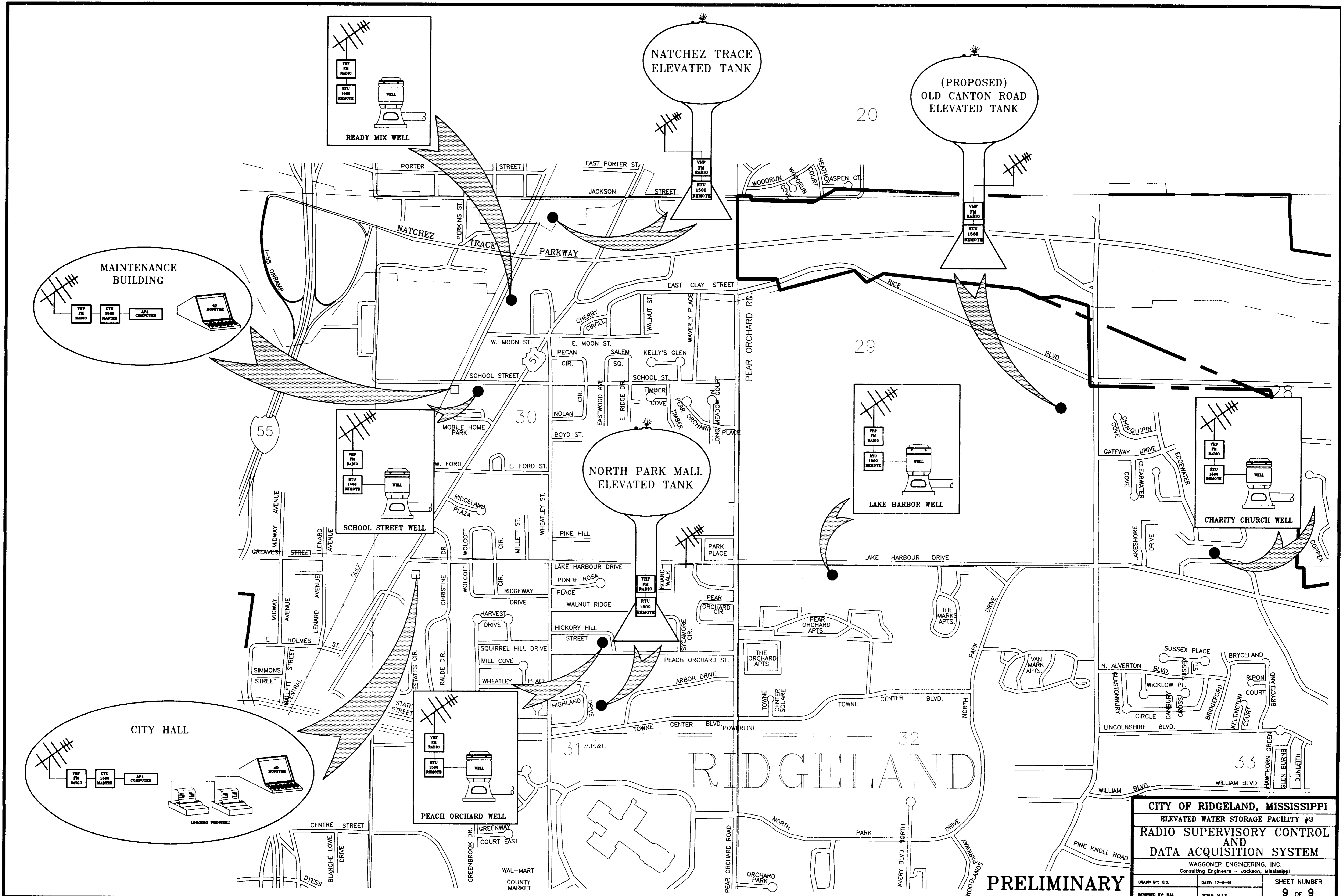


TYPE I
CHAIN LINK FENCE



TYPE II
CHAIN LINK FENCE

PRELIMINARY		
CITY OF RIDGELAND, MISSISSIPPI		
ELEVATED WATER STORAGE FACILITY		
STANDARD FENCE DETAILS		
WAGGONER ENGINEERING, INC. Consulting Engineers - Jackson, Mississippi		
DRAWN BY: P.H.	DATE: 10-18-91	SHEET NUMBER
REVIEWED BY: J.J.	SCALE: N.T.S.	8 OF 9



CITY OF RIDGELAND, MISSISSIPPI
 ELEVATED WATER STORAGE FACILITY #3
RADIO SUPERVISORY CONTROL AND DATA ACQUISITION SYSTEM
 WAGGONER ENGINEERING, INC.
 Consulting Engineers - Jackson, Mississippi

DRAWN BY: C.S.	DATE: 12-8-91	SHEET NUMBER
REVIEWED BY: B.M.	SCALE: N.T.S.	9 OF 9

PRELIMINARY