

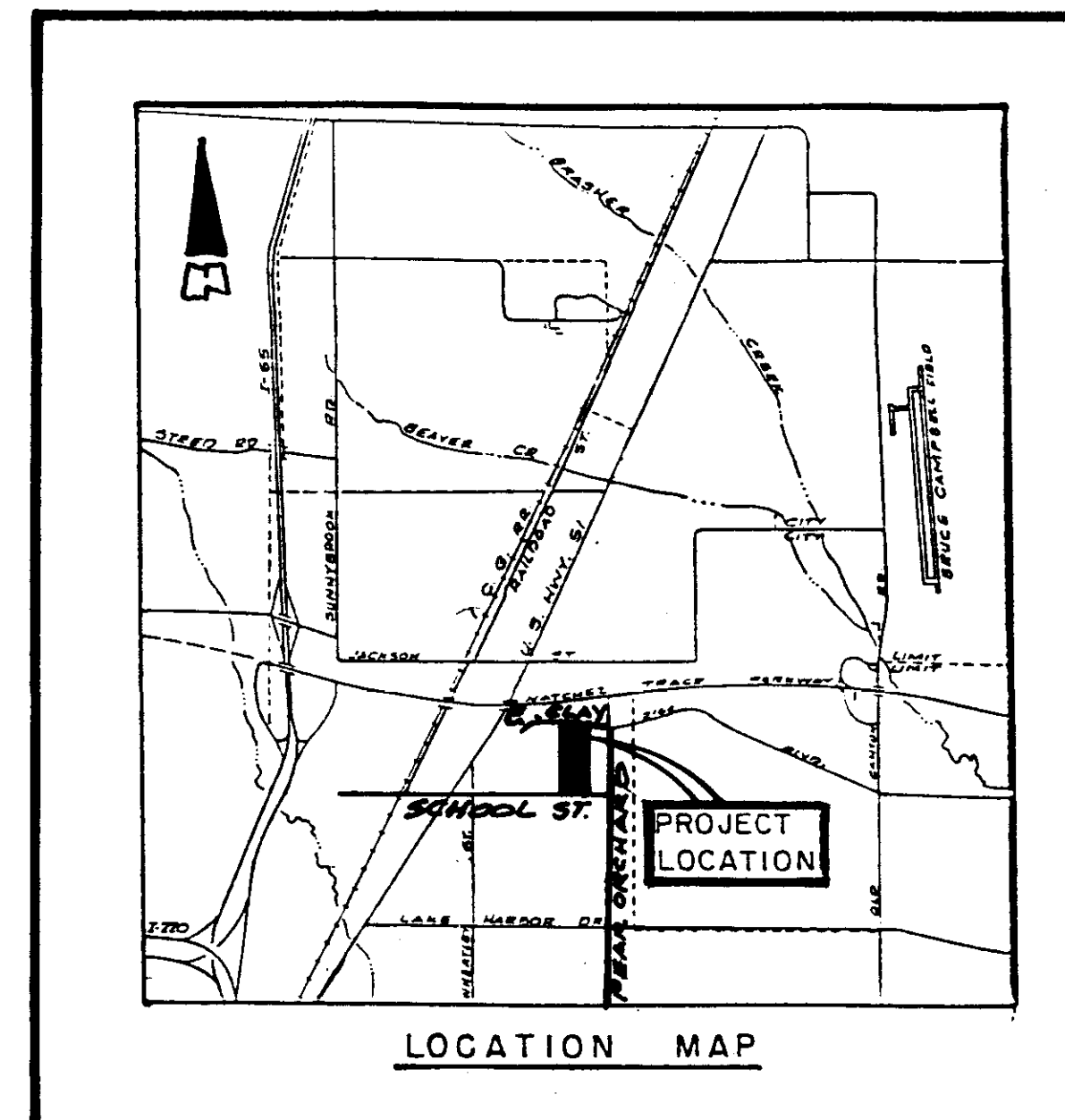
WAVERLY PLACE / R-1 SUBDIVISION

CITY OF RIDGELAND, MADISON COUNTY

MISSISSIPPI

CONSTRUCTION PLANS FOR STREETS, STORM DRAINAGE AND MAJOR UTILITIES

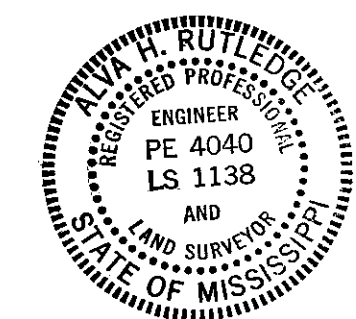
1985



LOCATION MAP

OWNERS:

MR. J. PAUL STOCKWELL
MRS. "FREDDIE" STOCKWELL



FILED THIS 1 DAY OF January 1985
Wright
CITY OF RIDGELAND

ENGINEER:

Rutledge and Associates, Inc.
CONSULTING ENGINEERS - SURVEYORS
5250 Galaxie Drive • P. O. Box 16469 • Jackson, Mississippi
Telephone (601) 981-2990

PWP-05007

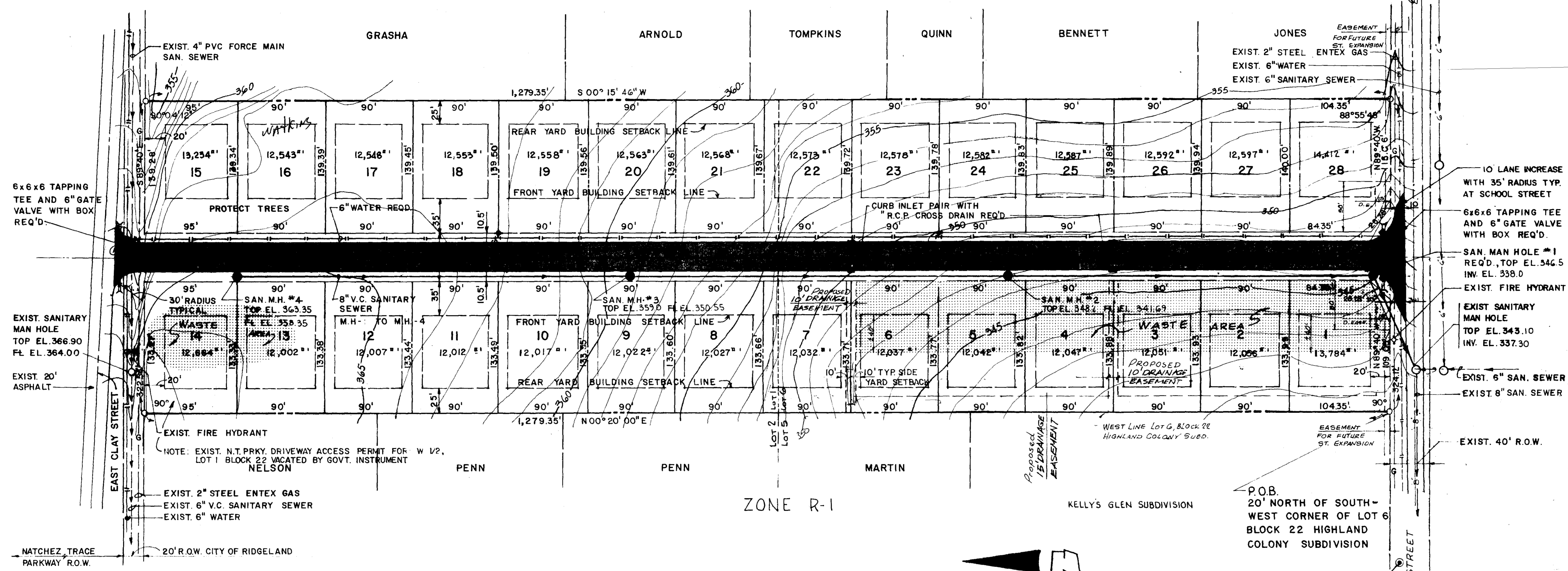
Waverly Place

WAVERLY PLACE

① Revised 12-12-85
 2. Revised 1-6-86

REVISIONS

ZONE R-1



SITE PLAN
WAVERLY PLACE - R-1 SUBDIVISION
 OWNERS MR. J. PAUL STOCKWELL & MRS. "FREDDIE" STOCKWELL
 RIDGELAND, MADISON COUNTY, MISSISSIPPI

Rutledge and Associates, Inc.
 CONSULTING ENGINEERS - SURVEYORS
 JACKSON, MS 39236
 P.O. BOX 16469

SITE PLAN

OWNERS:
 J. Paul Stockwell, et. ux
 Betty C. Dees Stockwell
 2328 Twin Lakes Circle
 Jackson, Mississippi 39211

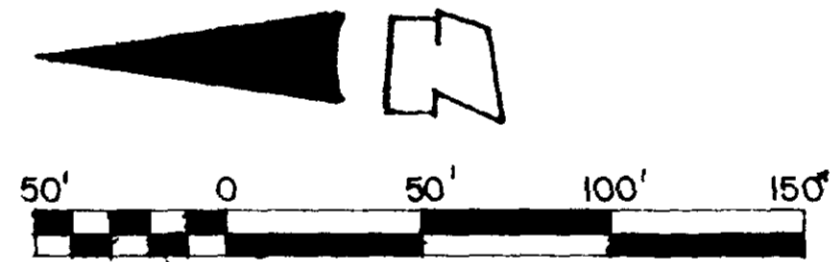
DESCRIPTION:
 The undersigned owners and surveyor hereby certify and declare that this plat designated as WAVERLY PLACE SUBDIVISION, embraces and covers the following described land lying and being situated in the W 1/2 of Lot 1 and the W 1/2 of Lot 6 of Block 22, Highland Colony Subdivision, which is situated in the W 1/2 of the SE 1/4 of the NE 1/4 of Section 30, T7N-R2E, City of Ridgeland, Madison County, Mississippi, containing 9.50 acres, more or less, and being more particularly described as follows:

Commencing at an iron pin set in concrete, said pin being 20.0 feet north of the southwest corner of Lot 6, Block 22 of Highland Colony Subdivision; and on the north right-of-way line of School Street as now laid out; said pin being the POINT OF BEGINNING of the subdivision herein described; thence
 N 00°20'E along the west side of Lots 6 and 1, Block 22, of Highland Colony Subdivision for a distance of 1279.35 feet to the south right-of-way line of East Clay Street, as now laid out, said point being 20 feet south of the northwest corner of Lot 1, Block 22 of Highland Colony Subdivision; thence
 S 89°40'00"E along the south right-of-way line of East Clay Street for a distance of 322.54 feet; thence
 S 00°15'46"W for a distance of 1279.35 feet, to the north right-of-way line of School Street as now laid out; thence
 N 89°40'00"W along the north right-of-way line of said School Street for a distance of 324.12 feet to the POINT OF BEGINNING.

NOTE:
 This is to certify that this property is located in Zone C, which is defined as "areas of minimal flooding", HUD identified special flood hazard area according to F.I.A. Map No. 290110 0005 C, effective date: September 30, 1980

Alan D. Quick
 Alan D. Quick,
 R.L.S. No. 1663

SURVEY COMPLETED: Nov. 15, 1985



GRAPHIC SCALE: 1" = 50'
 CONTOUR INTERVAL - 1'

NOTE:
 GAS, ELECTRIC POWER & TELEPHONE SERVICES UNDERGROUND IN WAVERLY PLACE DEDICATED 50' R.O.W. PER UTILITY CO. PLANS (AND TYPICAL STREET DETAILS ATTACHED).

Note: 1. All connections to the existing water mains will be made by the City of Ridgeland Public Works department. The contractor shall provide the necessary tapping sleeve and related materials.

2. All construction must conform to the "STANDARDS OF DESIGN AND SPECIFICATIONS FOR SUBDIVISIONS", City of Ridgeland, Mississippi.

3. All Excess Excavation Off Street Shall Be Evenly Placed On Designated Waste Areas. All Material Placed Must Be Properly Processed And Placed In 6"-8" Lifts In Accordance To Ridgeland Specifications.

4. Striping Of Topsoil Off Designated Waste Areas Is Included In Bid Item S-203-A-1 Unclassified Excavation

5. If Expansive Clays Are Evident, The Street Will Be Excavated A Minimum of Two Additional Feet Below Subgrade And Backfilled With A Suitable Non-Expansive Sand Clay Material Approved By The Engineer.

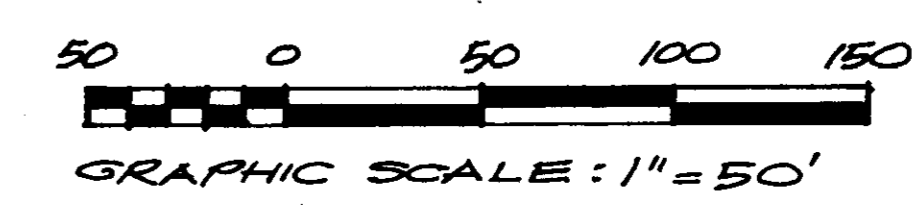
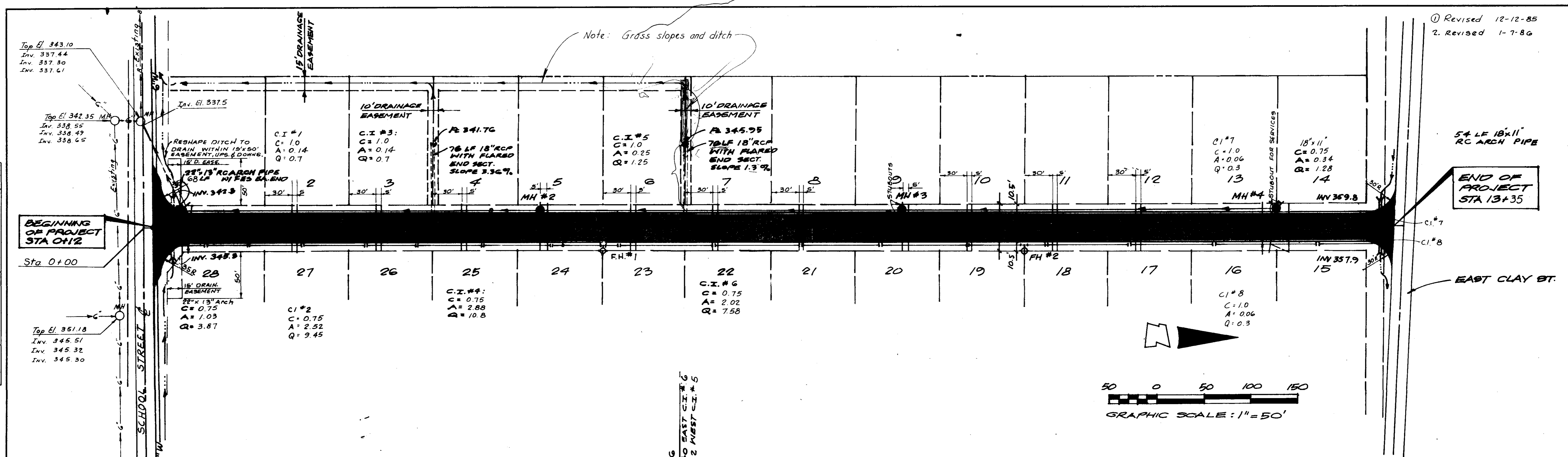
DESIGNED L.H.R./GW
 DRAWN L.H.R.
 CHECKED
 DATE NOV. 85
 SHEET 2
 OF

① Revised 12-12-85
 2. Revised 1-7-86

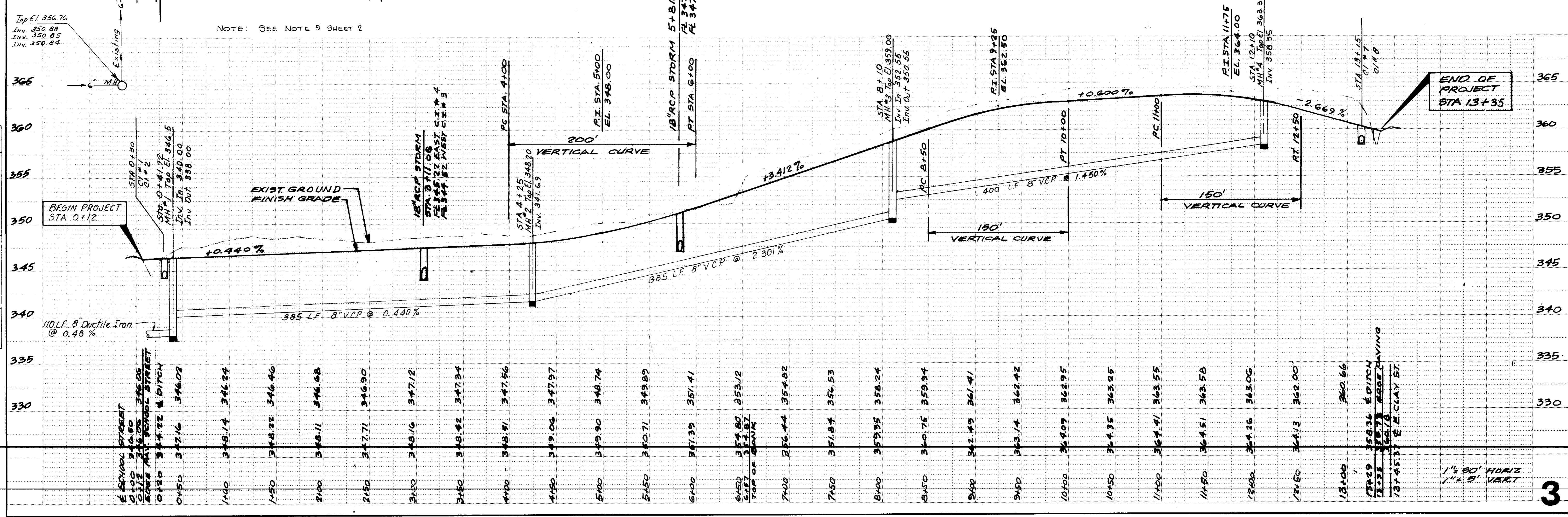
Note: Grass slopes and ditch

PLAN	DATE	BY
SURVEYED		
NOTE BOOK		
NO.		

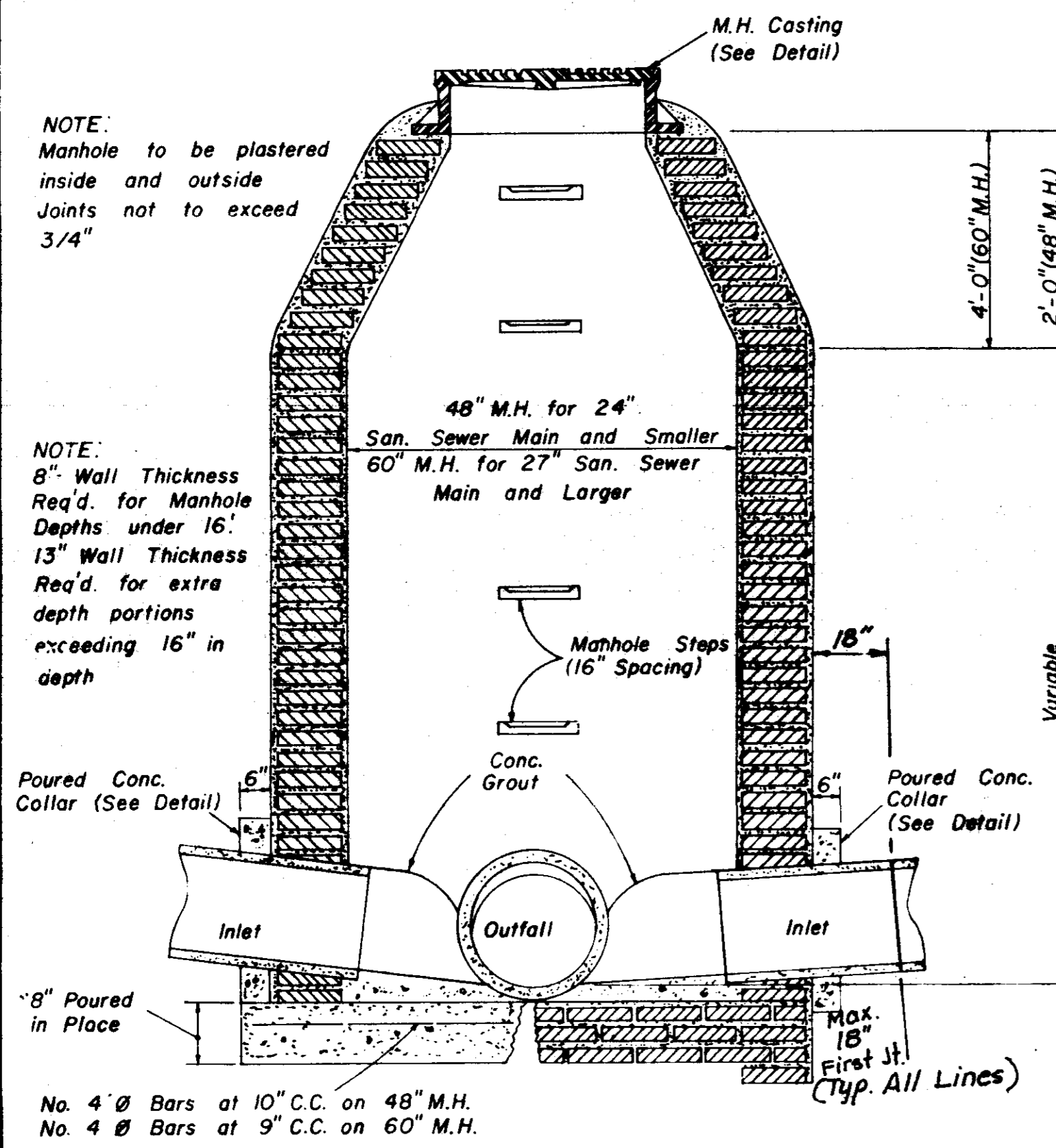
PROFILE	DATE	BY
SURVEYED		
NOTE BOOK		
NO.		



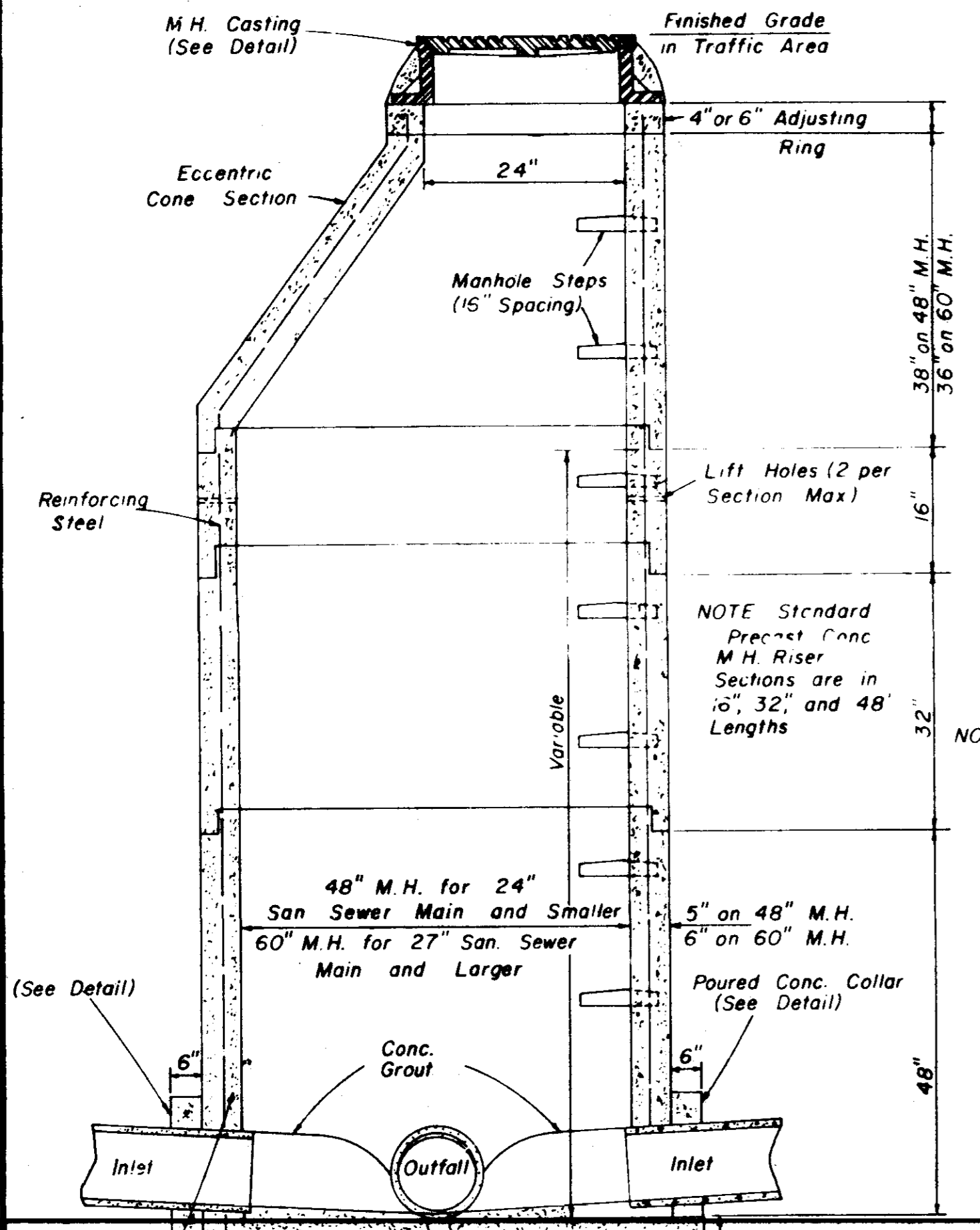
NOTE: SEE NOTE 5 SHEET 2



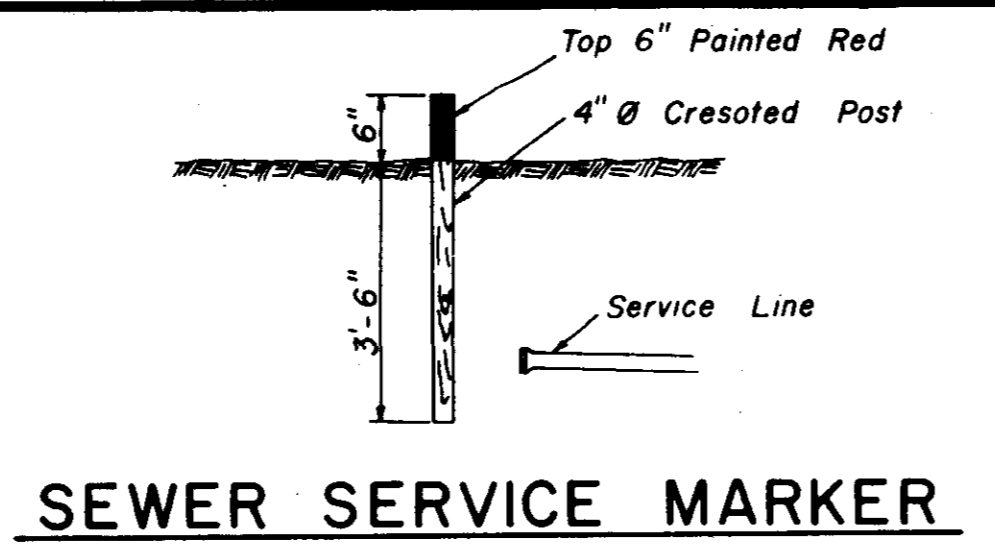
1" = 50' HORIZ
 1" = 5' VERT



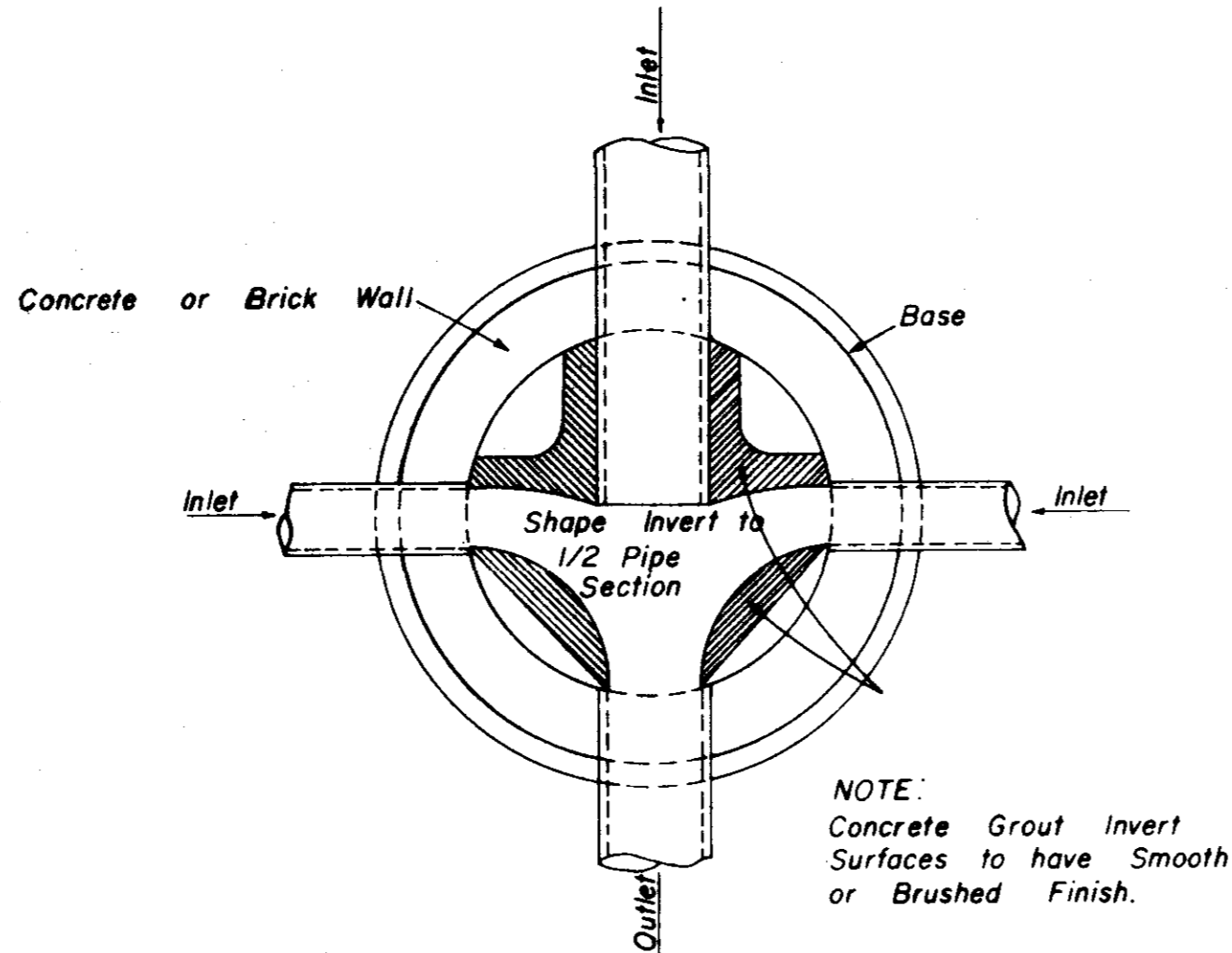
**SECTION
STANDARD BRICK MANHOLE**



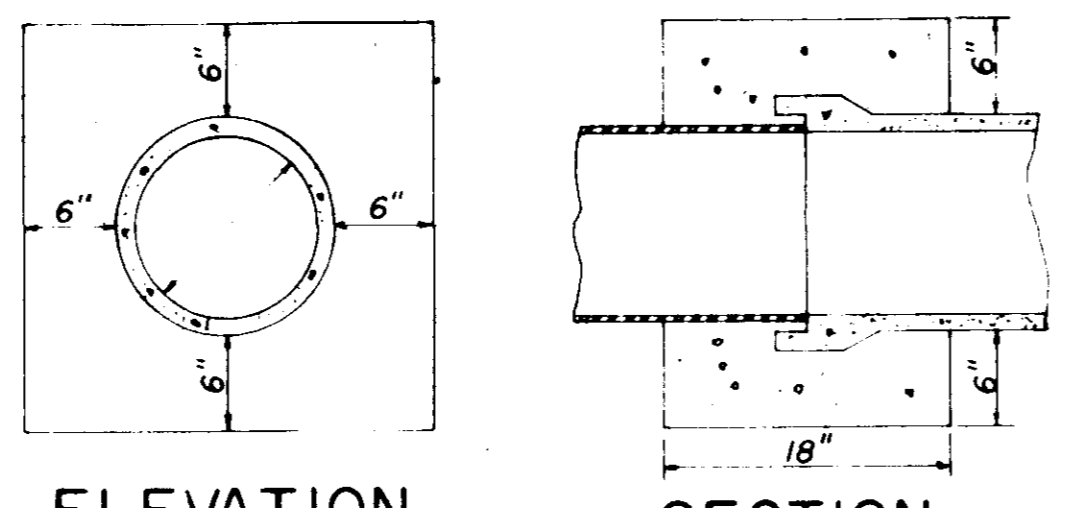
**SECTION
PRECAST CONCRETE MANHOLE**



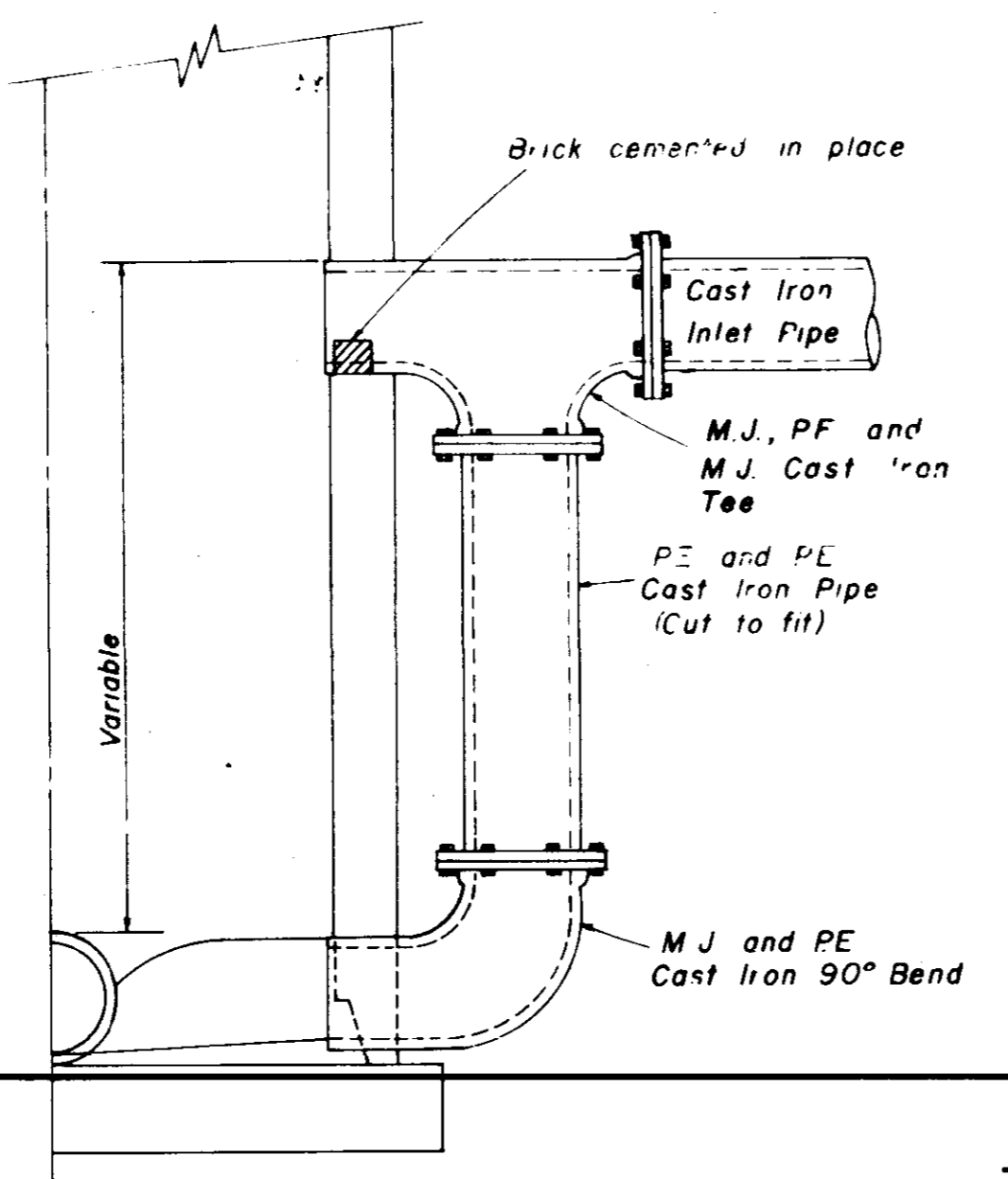
SEWER SERVICE MARKER



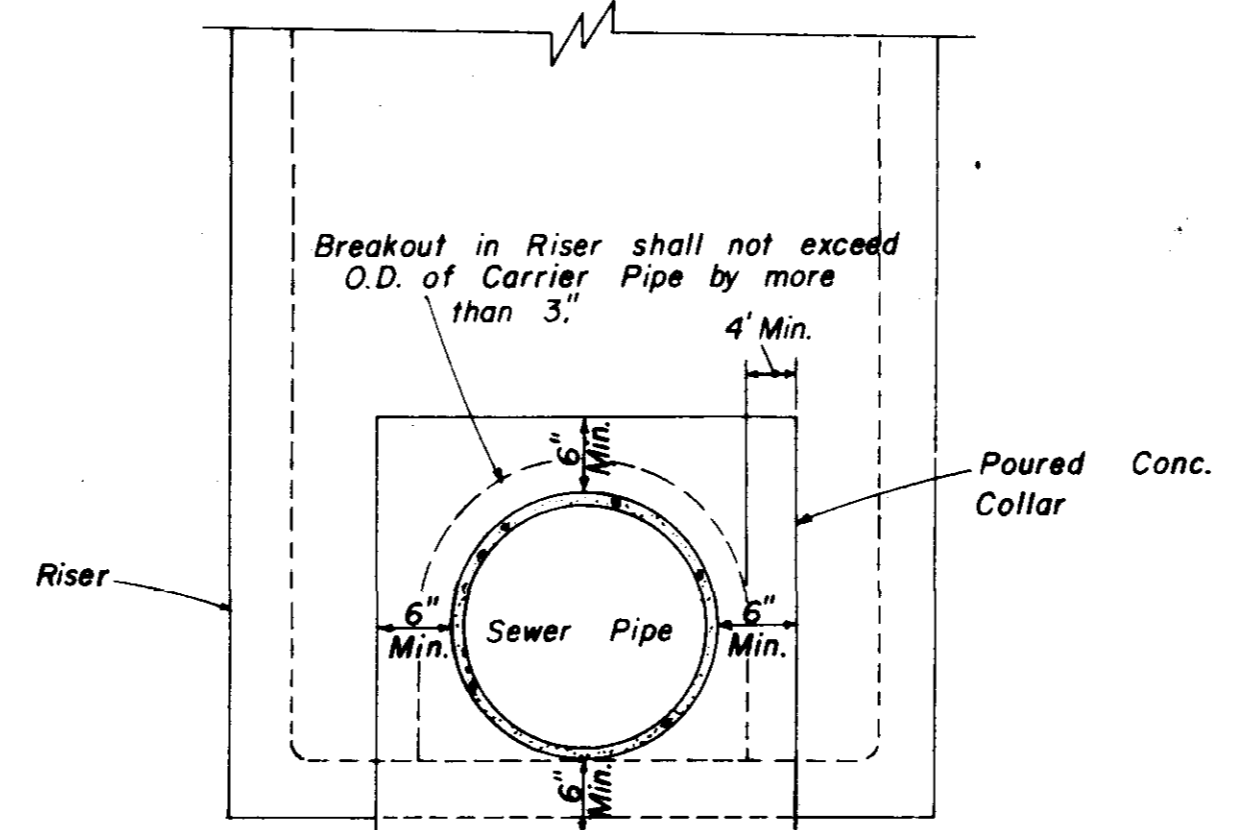
**PLAN OF MANHOLE
FLOW CHANNELS**



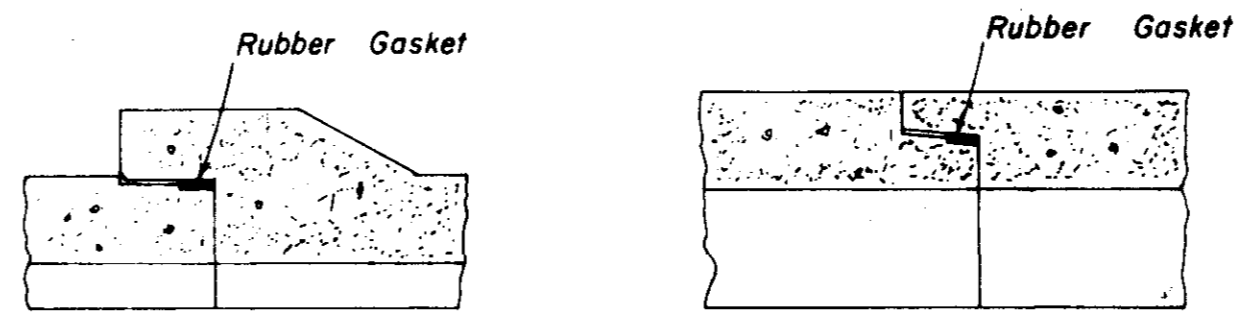
**ELEVATION SECTION
CONCRETE COLLAR DETAILS**



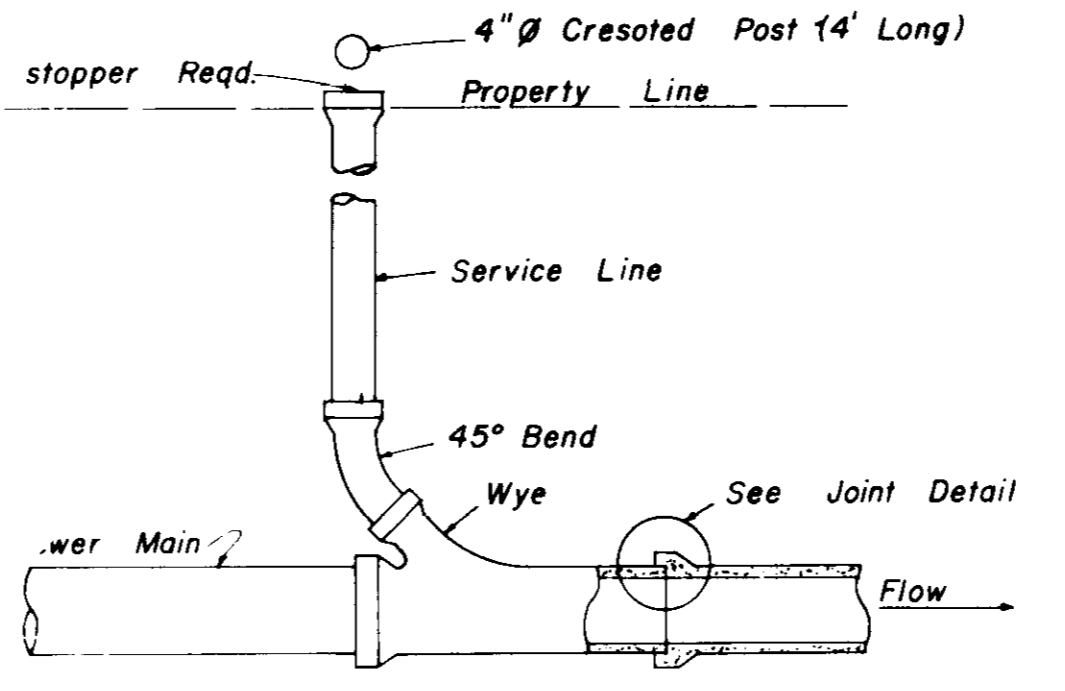
**HALF SECTION
MANHOLE WITH DROP CONNECTION**



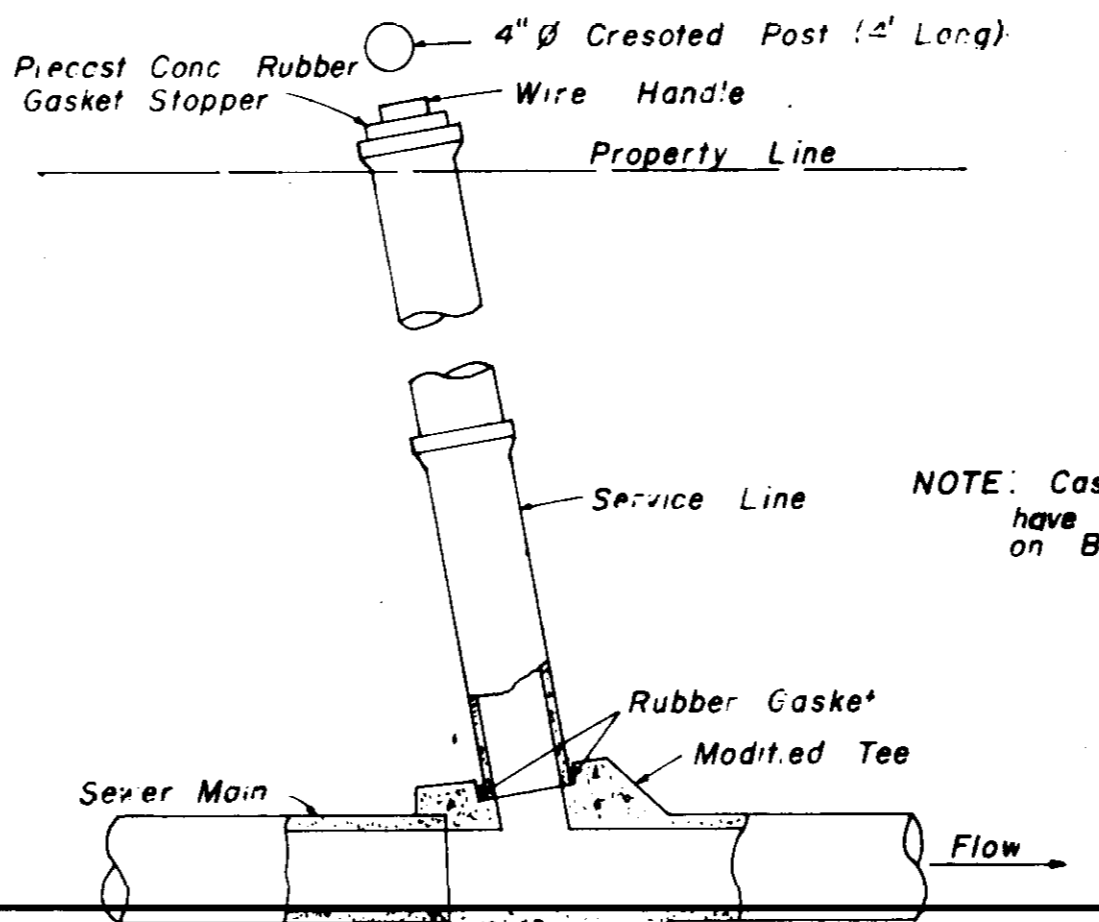
**ELEVATION
CONCRETE COLLAR AT
MANHOLE CONNECTION**



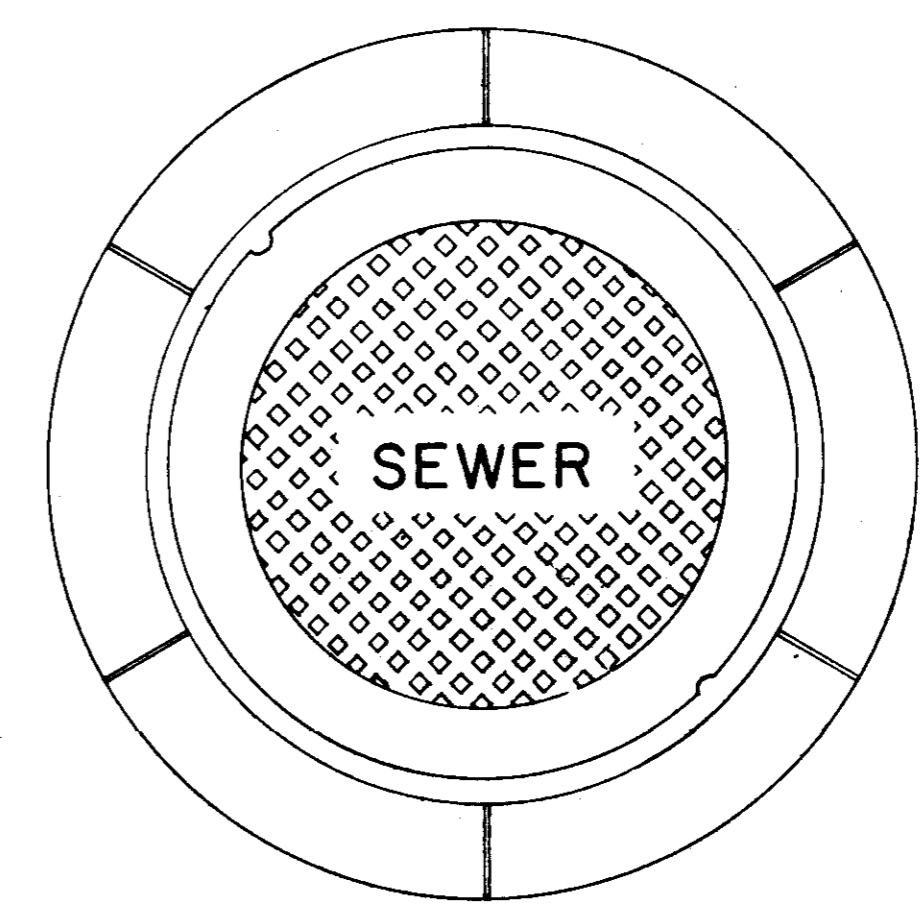
**BELL & SPIGOT JOINT DETAILS
TONGUE & GROOVE**



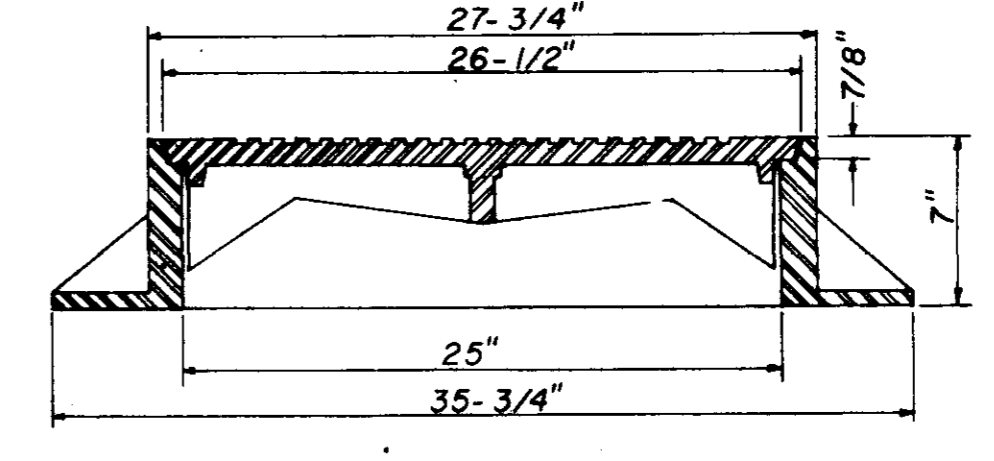
**TYPICAL SERVICE TO PROPERTY LINE
WITH WYE JOINT**



**TYPICAL SERVICE TO PROPERTY LINE
WITH MODIFIED TEE JOINT**

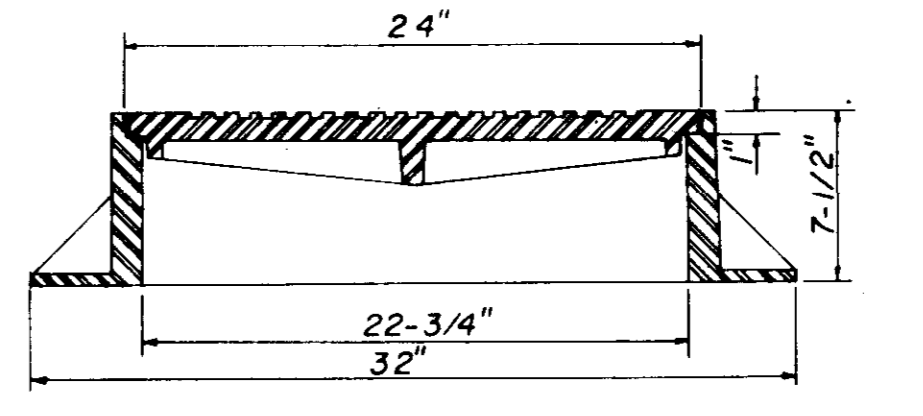


**PLAN
MANHOLE CASTING**



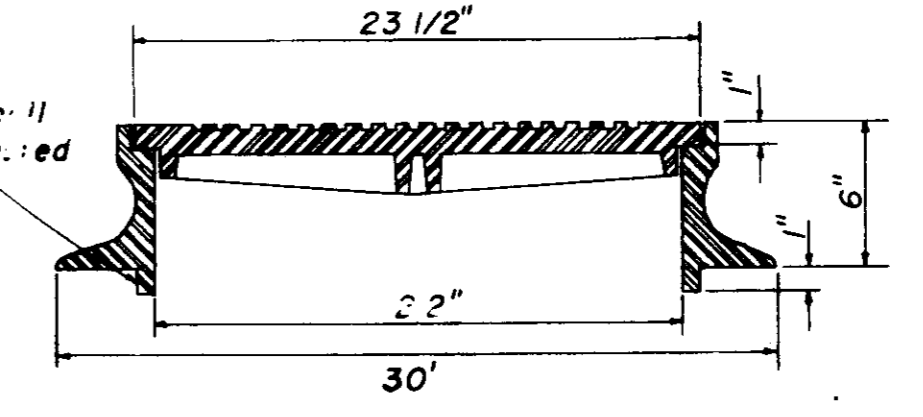
**SECTION
TYPE \"A\" MANHOLE CASTING**

NOTE: 1. Use Type "A" Manhole Casting in Street R.O.W.
2. Use Harper No. 2, City of Jackson Standard (420 lbs.)
or Vulcan No. VM-15, City of Jackson Standard (420 lbs.)



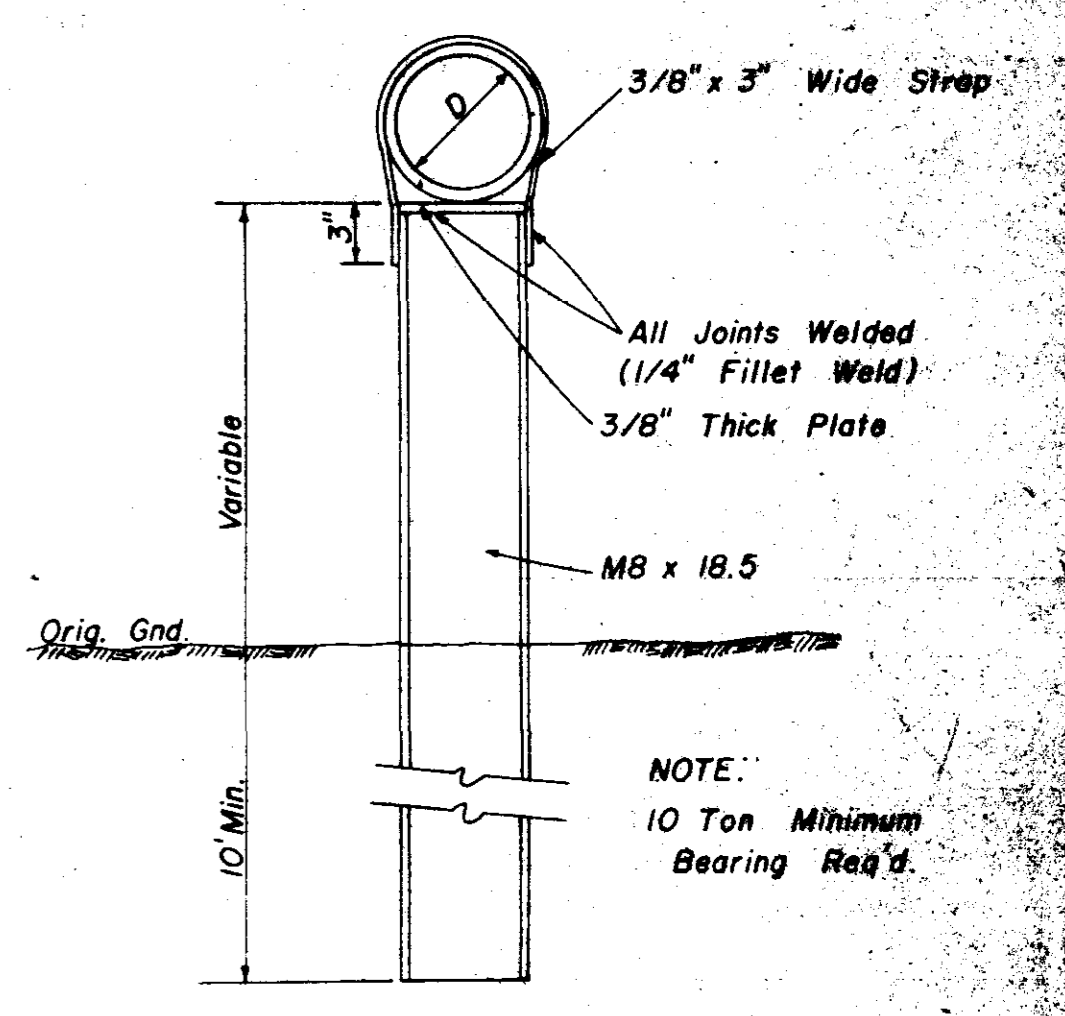
**SECTION
TYPE \"B\" MANHOLE CASTING**

NOTE: 1. Use Type "B" Manhole Casting for any Manhole not in a Street R.O.W.
2. Use Harper No. 1 (M.S.P.E. Standard) Light Weight (330 lbs.)
or Vulcan No. VM-17 (300 lbs.) or Opelika Foundry No. C-2-1 (325 lbs.)

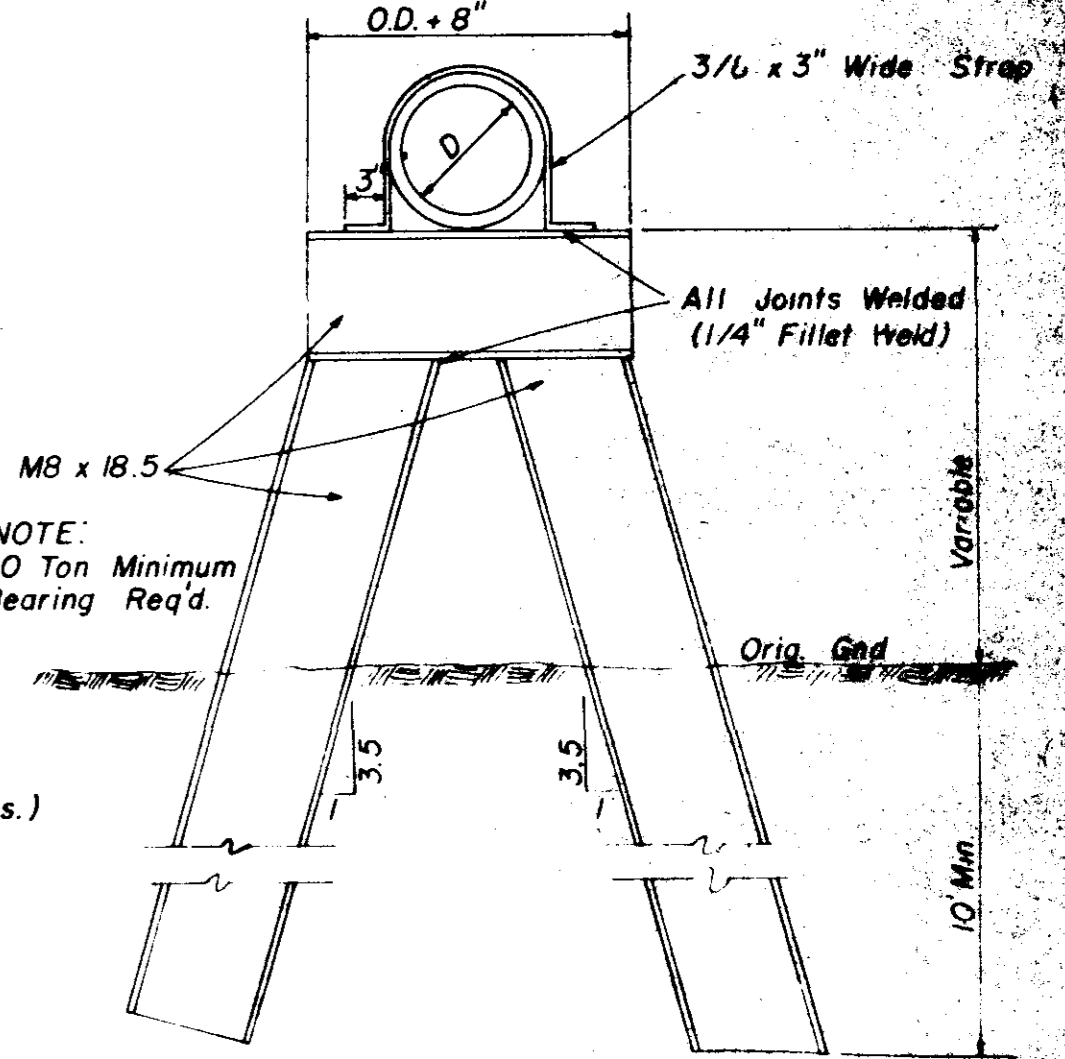


**SECTION
TYPE \"C\" MANHOLE CASTING**

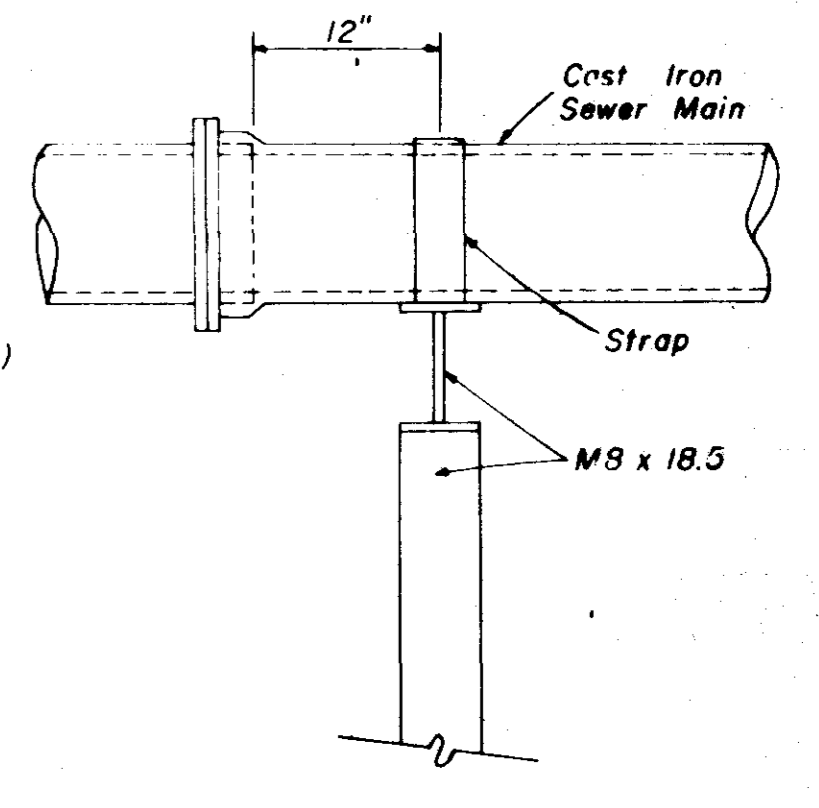
NOTE: 1. Use Type "C" Manhole Casting for Precast Manhole not in a Street R.O.W.
2. Use Harper No. 8 (330 lbs.) or Neenah No. R-1779 (300 lbs.) or Vulcan No. VM-7 (330 lbs.)



**DETAIL
TYPE \"A\" PIER**



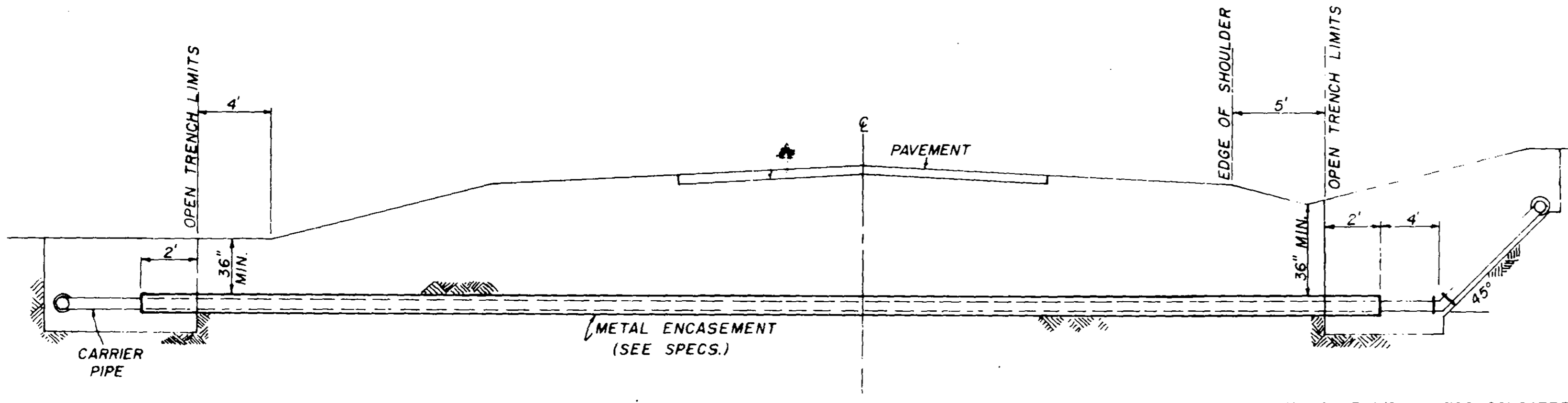
**DETAIL
TYPE \"B\" PIER**



**SIDE ELEVATION
TYPE \"B\" PIER**

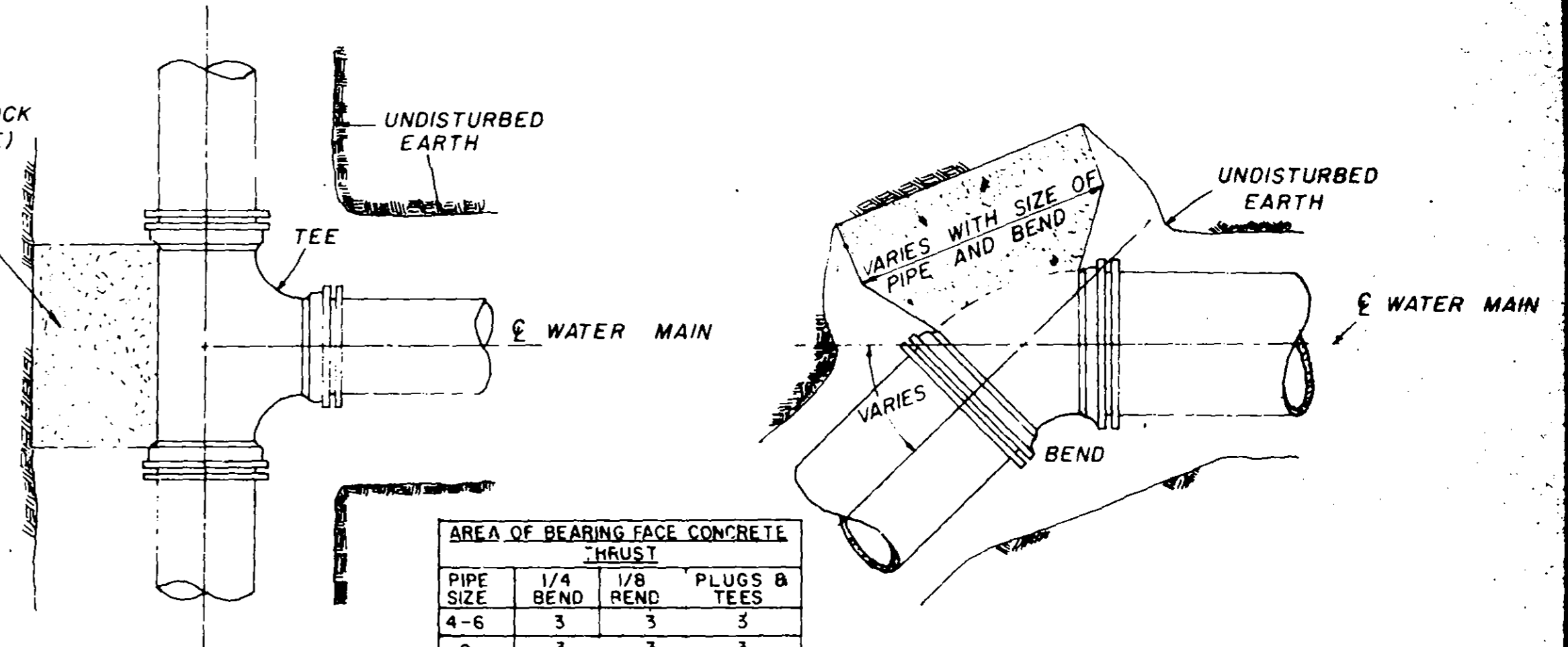
**SANITARY SEWER
STANDARD DETAILS**

JOE A. WAGGONER
Civil Engineer - Brandon/Jackson, Miss.
DRAWN BY: H.J. DATE: OCT 1982
CHECKED BY: J.A.W. SCALE: AS SHOWN



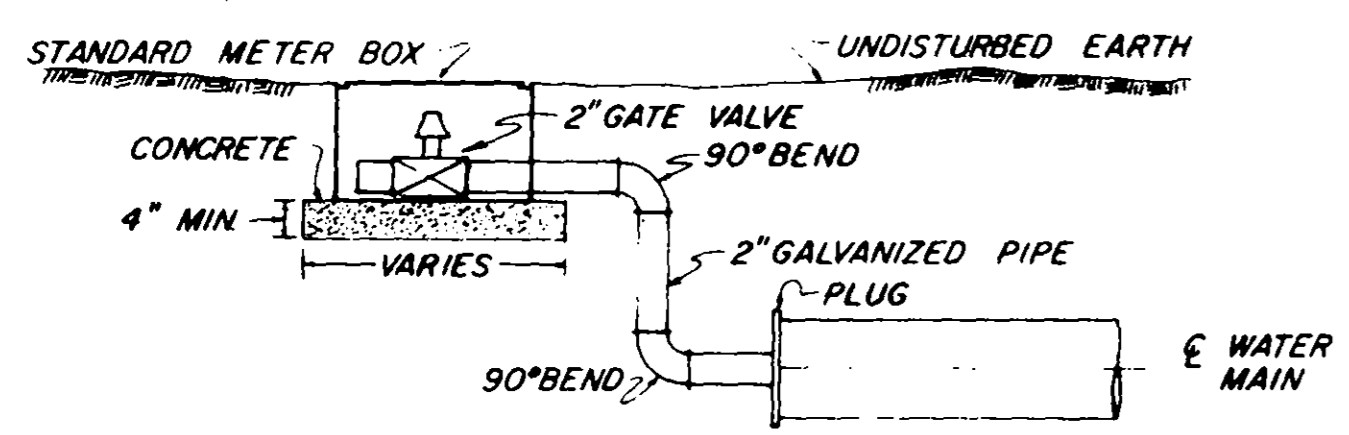
TYPICAL CASSED CROSSING

NOTE: COMPENSATION FOR CONCRETE THRUST BLOCKS SHALL BE INCLUDED IN THE UNIT PRICE BID FOR VALVES, FIRE HYDRANTS AND FITTINGS.

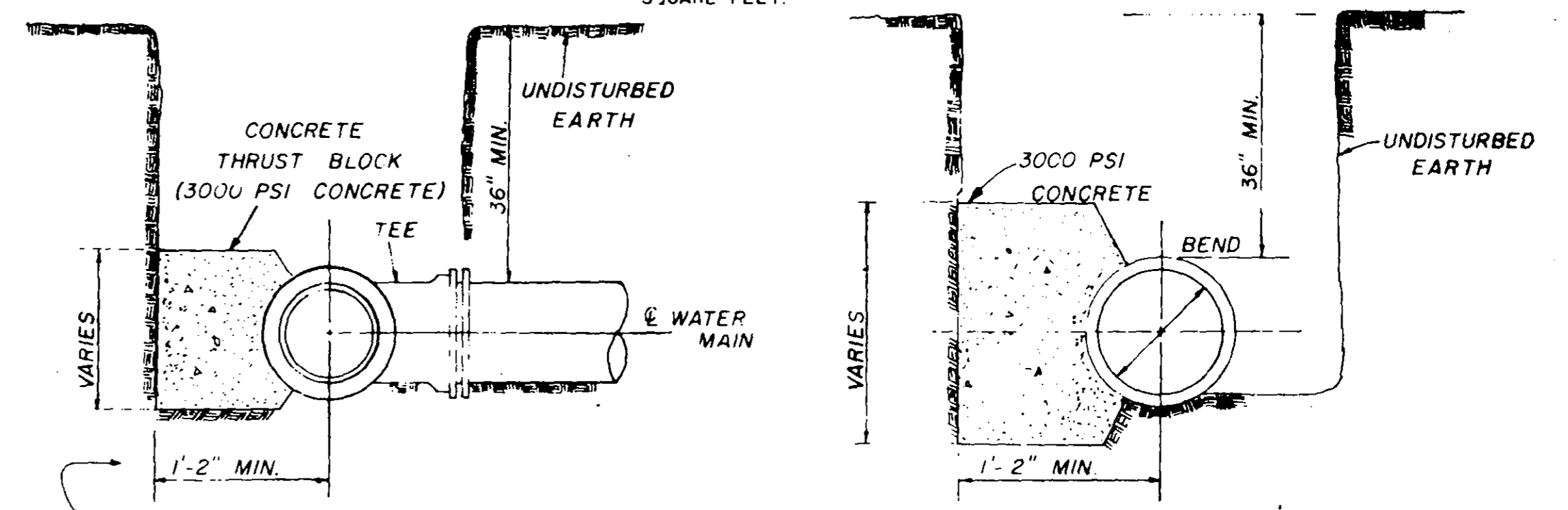


PLAN

PLAN



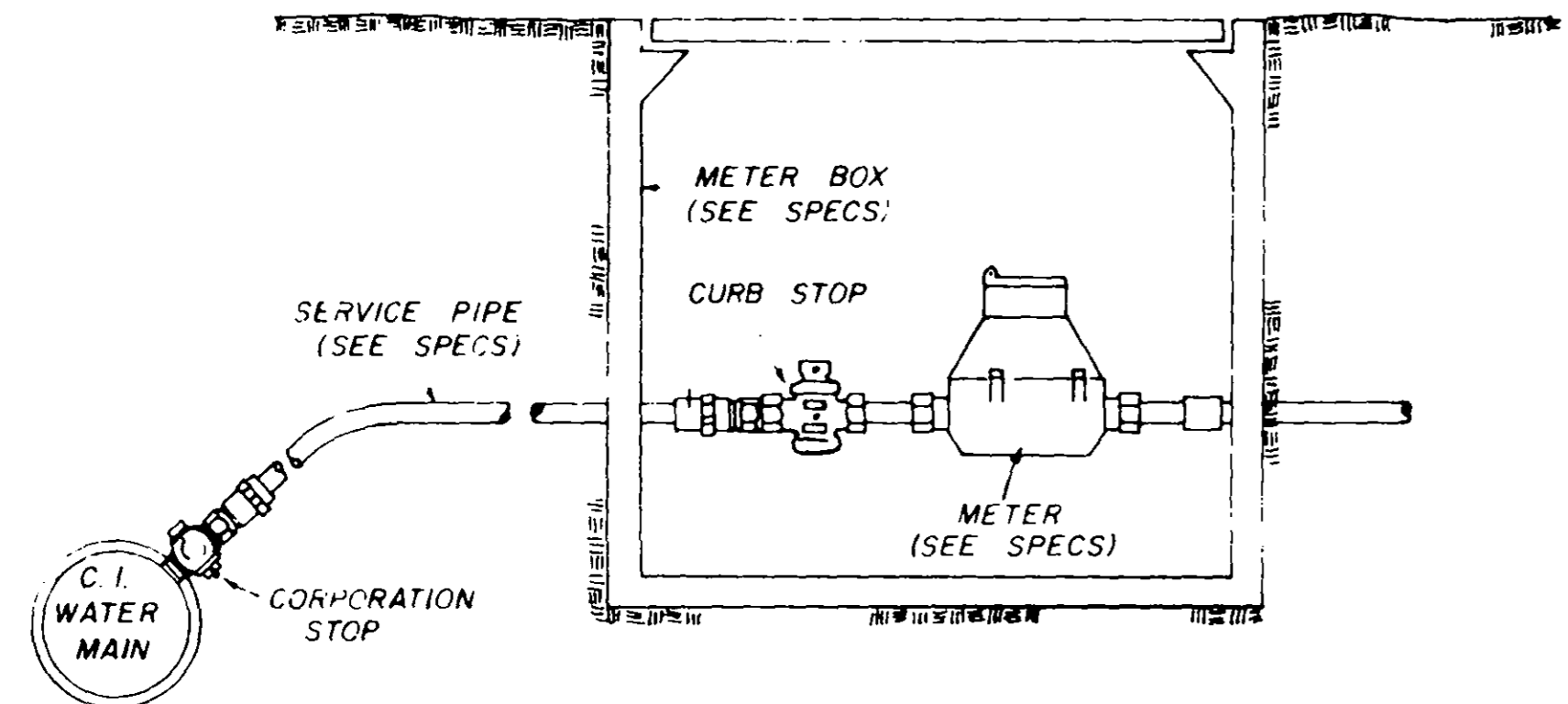
TYPICAL 2" BLOW-OFF DETAIL



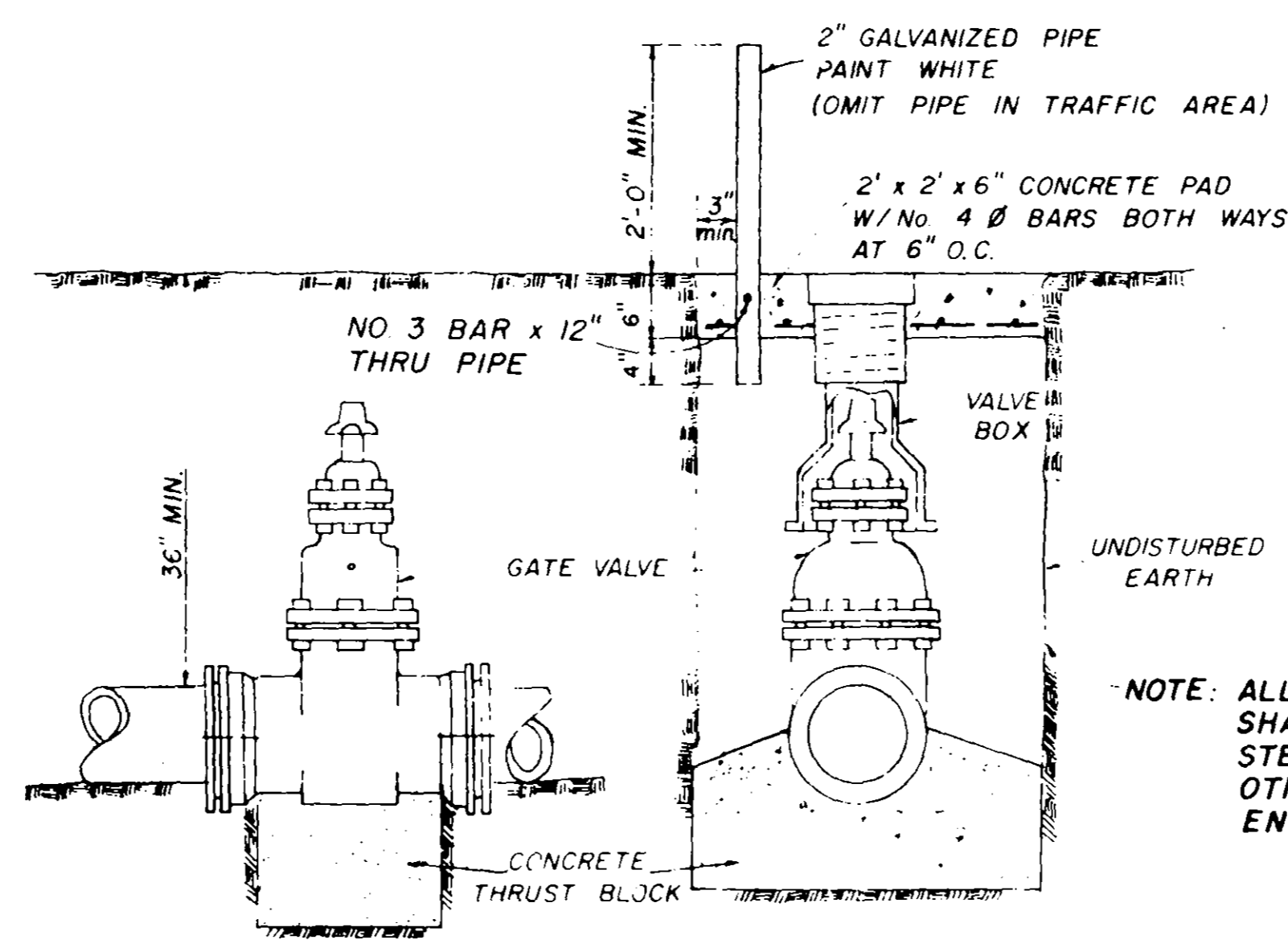
SECTION

SECTION

BLOCKING DETAILS FOR TEES & BENDS



TYPICAL SERVICE ASSEMBLY

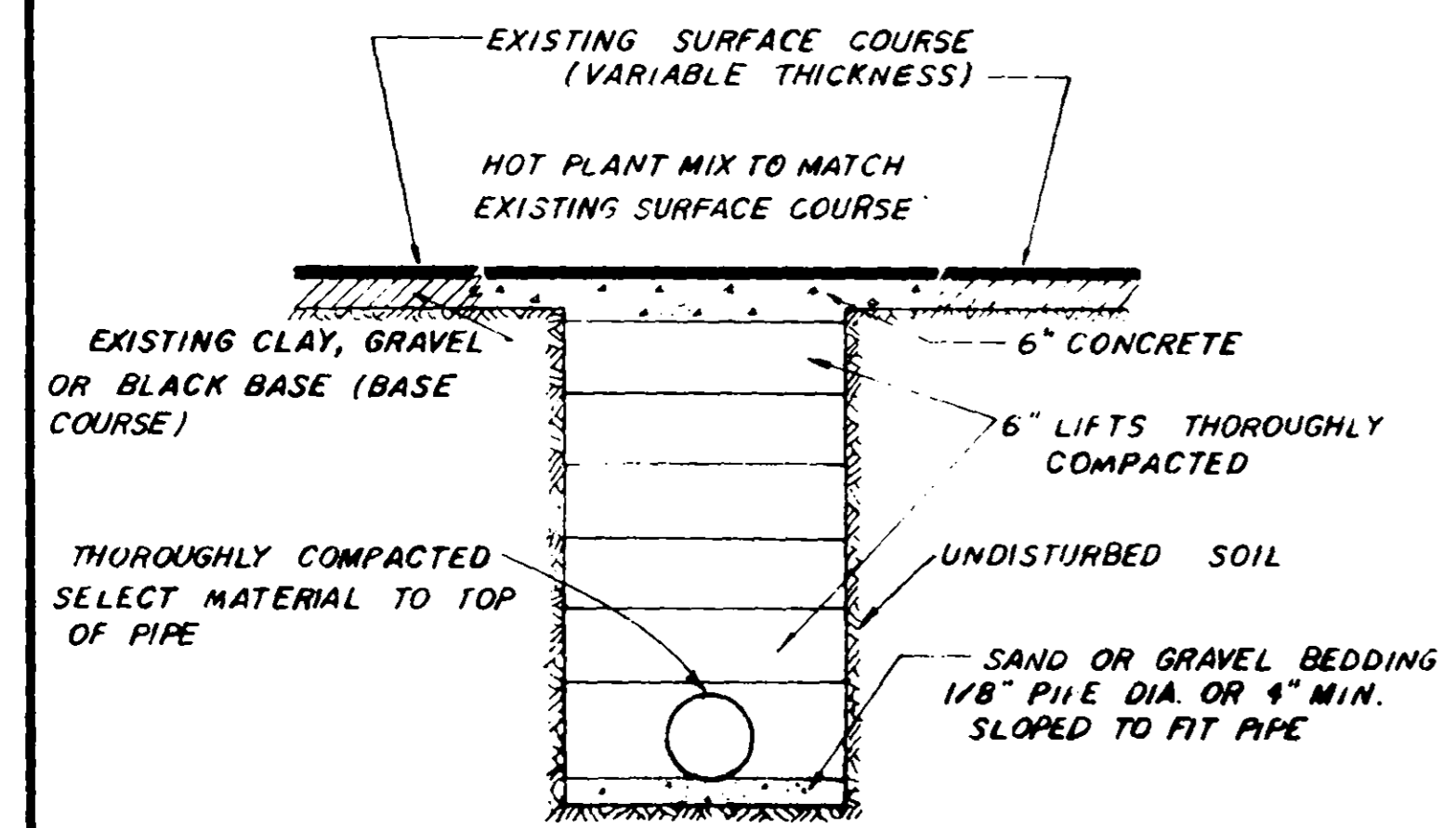
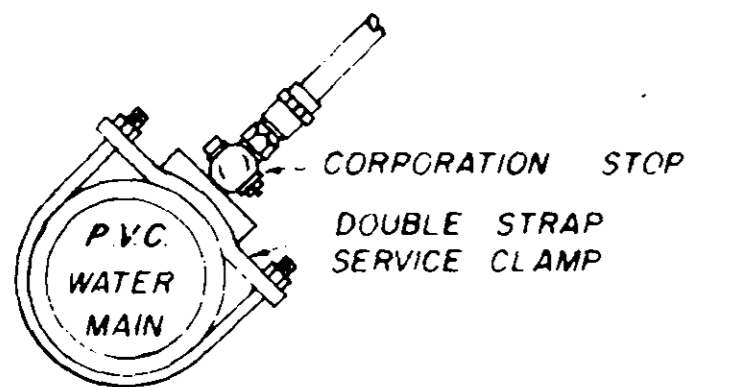


ELEVATION

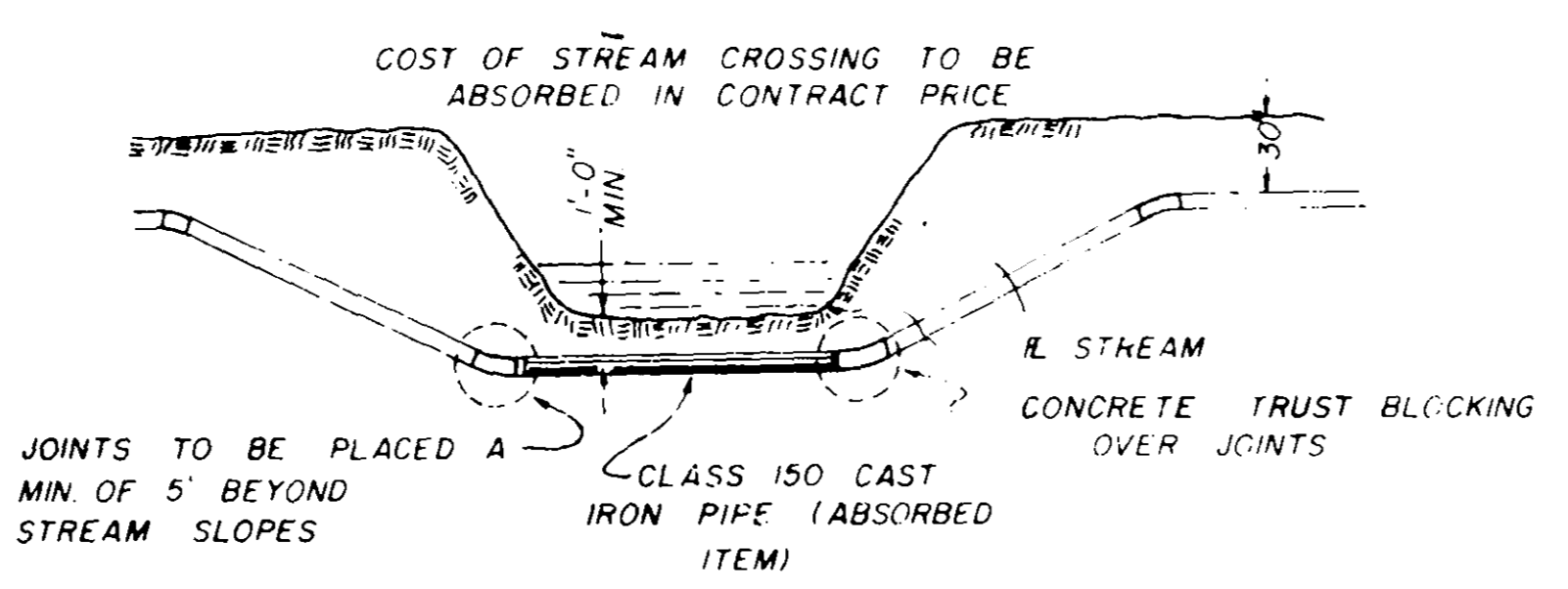
SECTION

TYPICAL VALVE & BOX

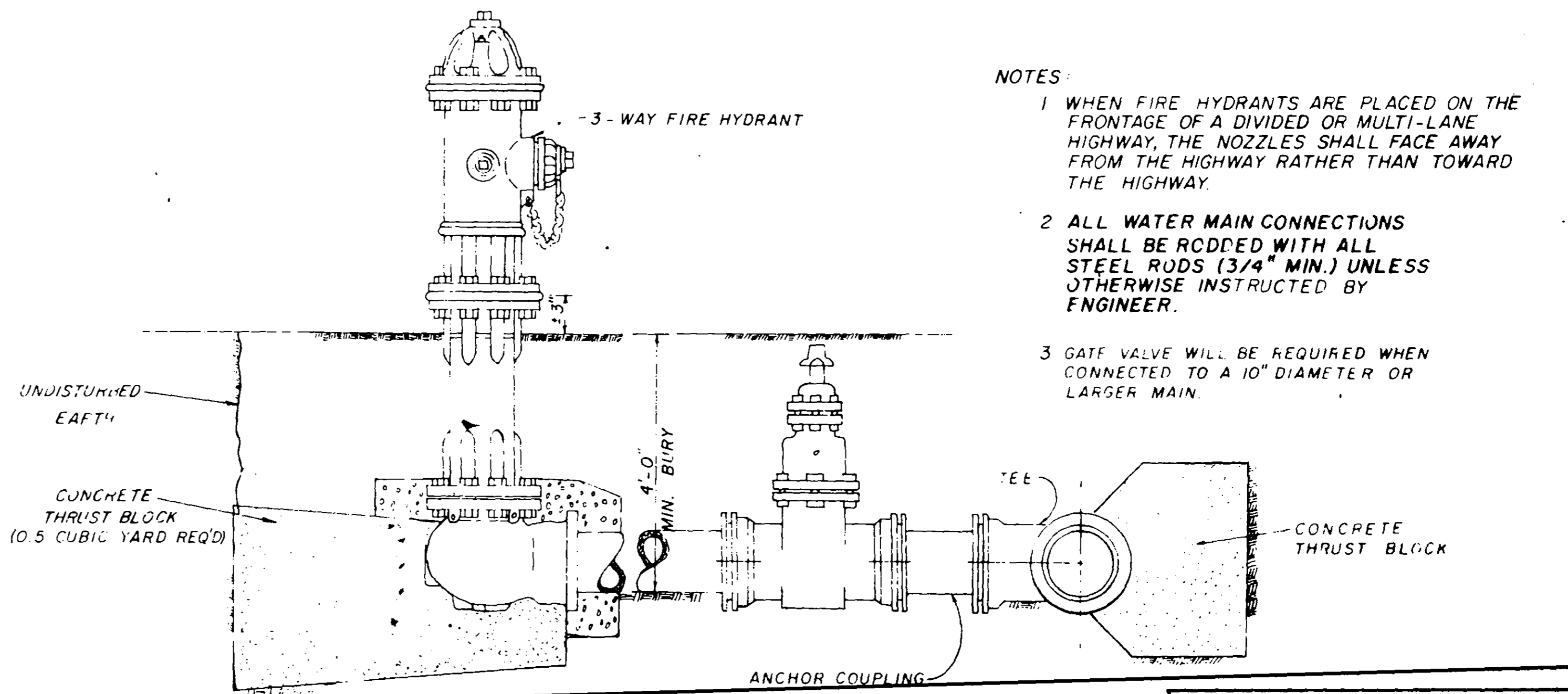
NOTE: ALL WATER MAIN CONNECTIONS SHALL BE RODDED WITH ALL STEEL RODS (3/4" MIN.) UNLESS OTHERWISE INSTRUCTED BY ENGINEER.



STREET REPAIR OF OPEN CUT



TYPICAL STREAM CROSSING

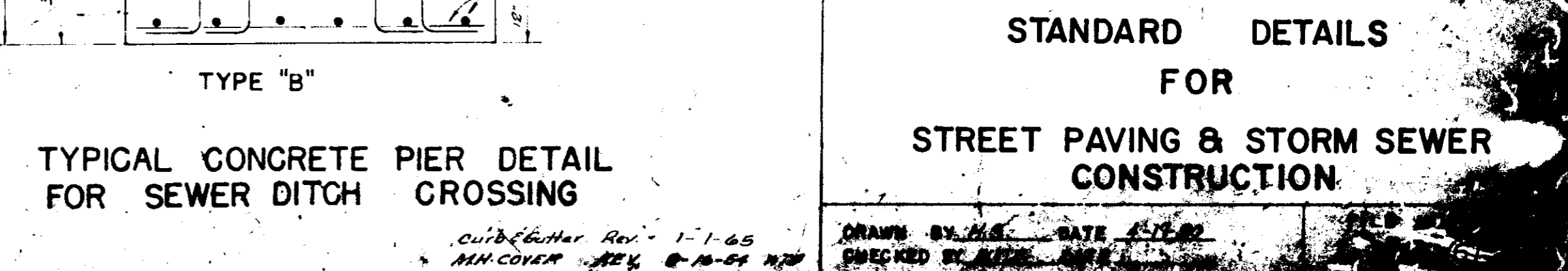
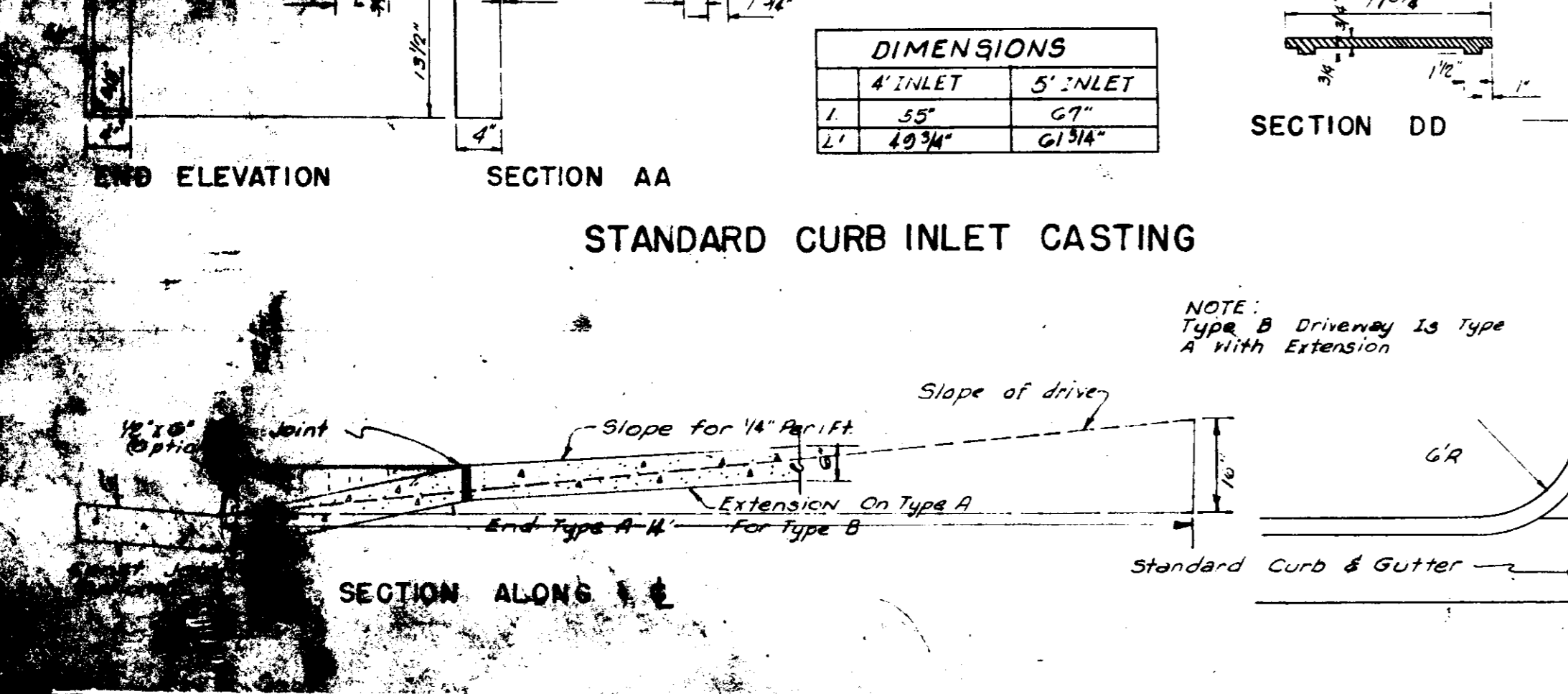
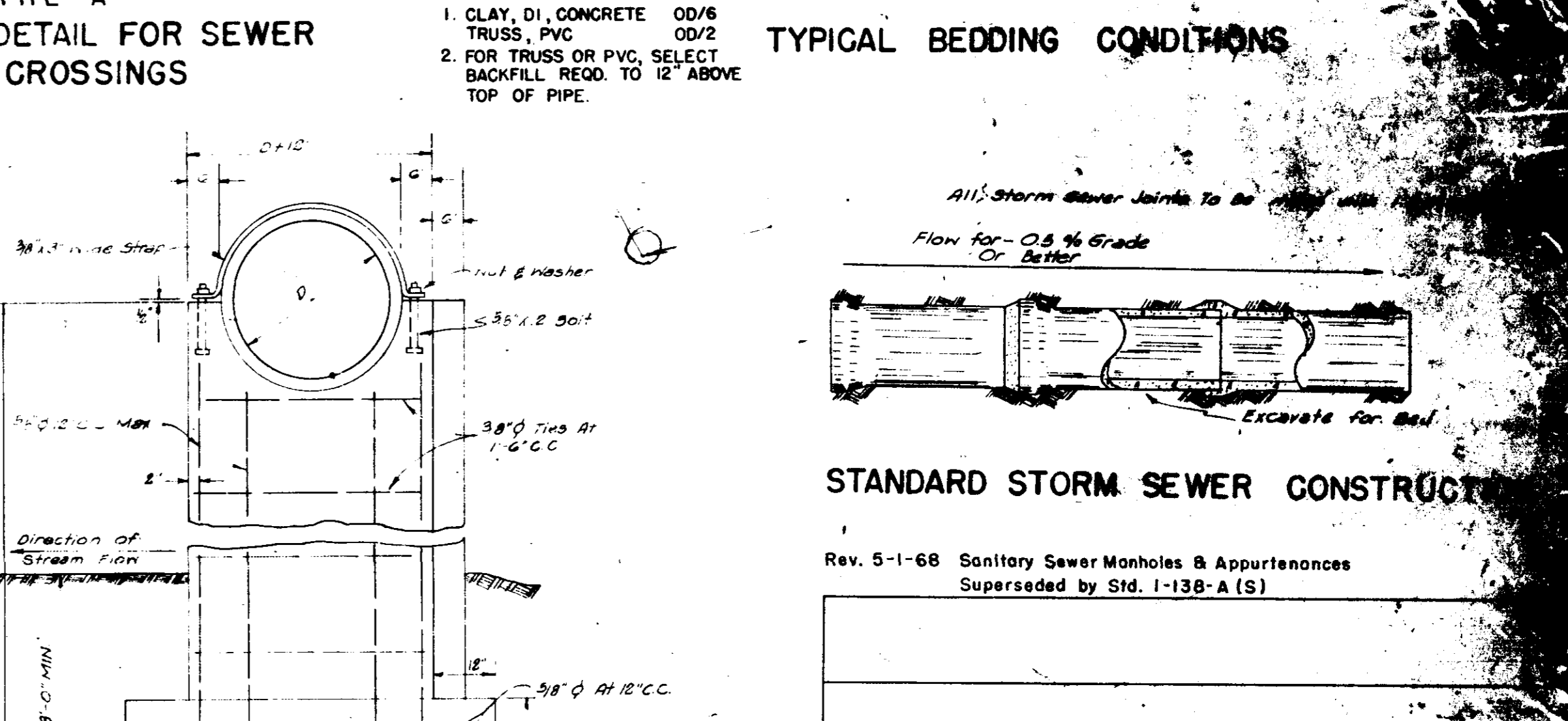
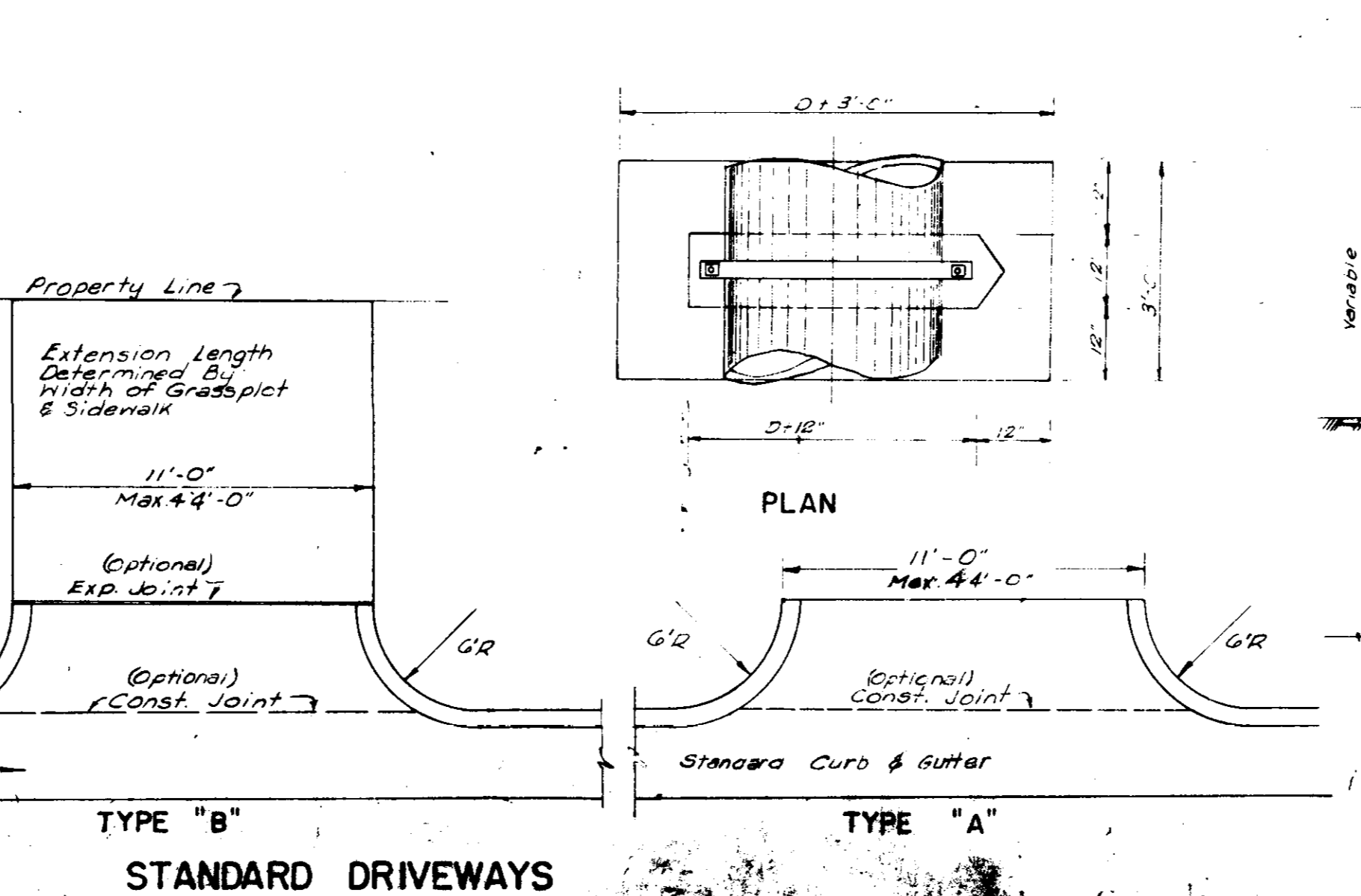
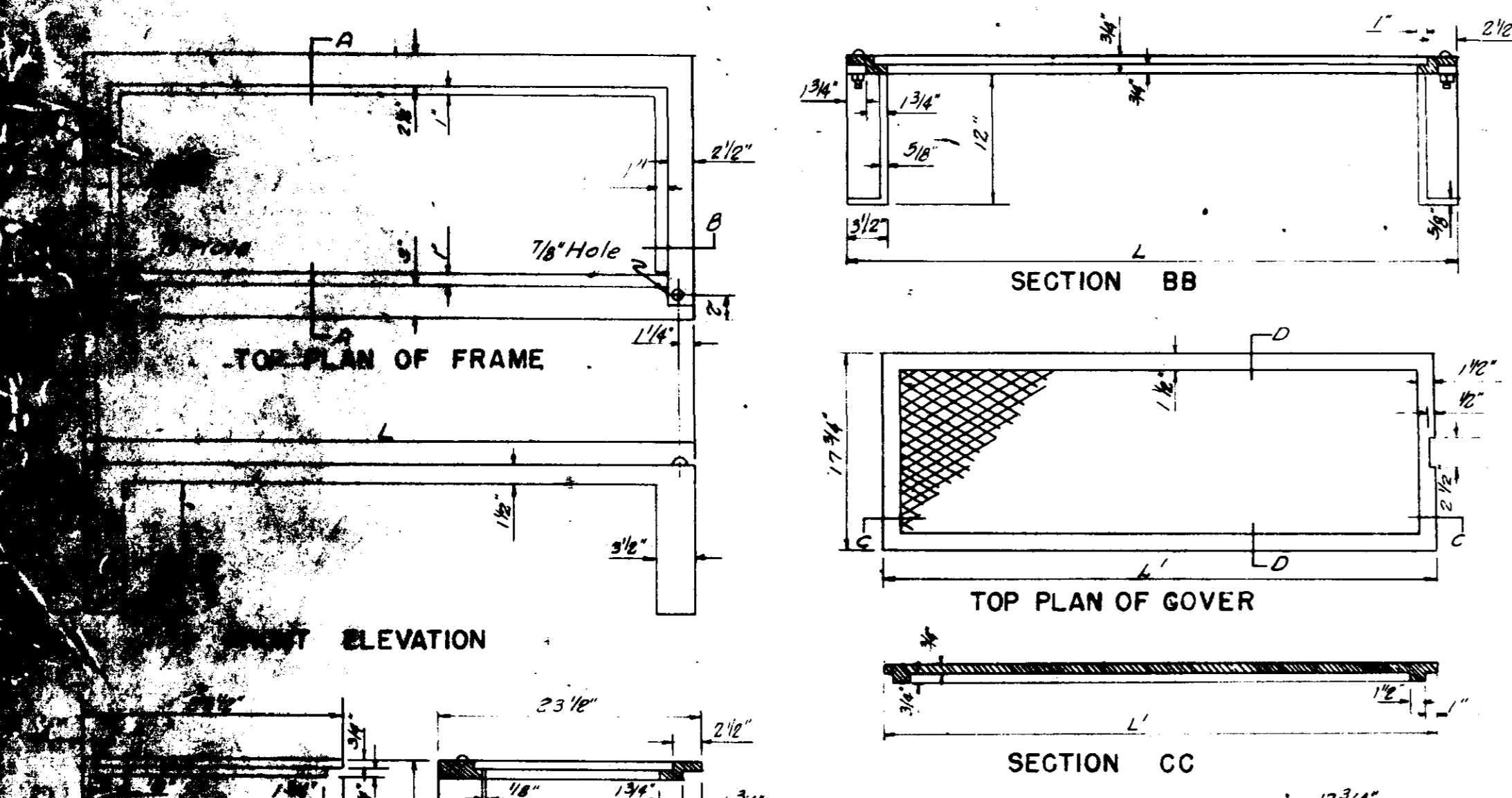
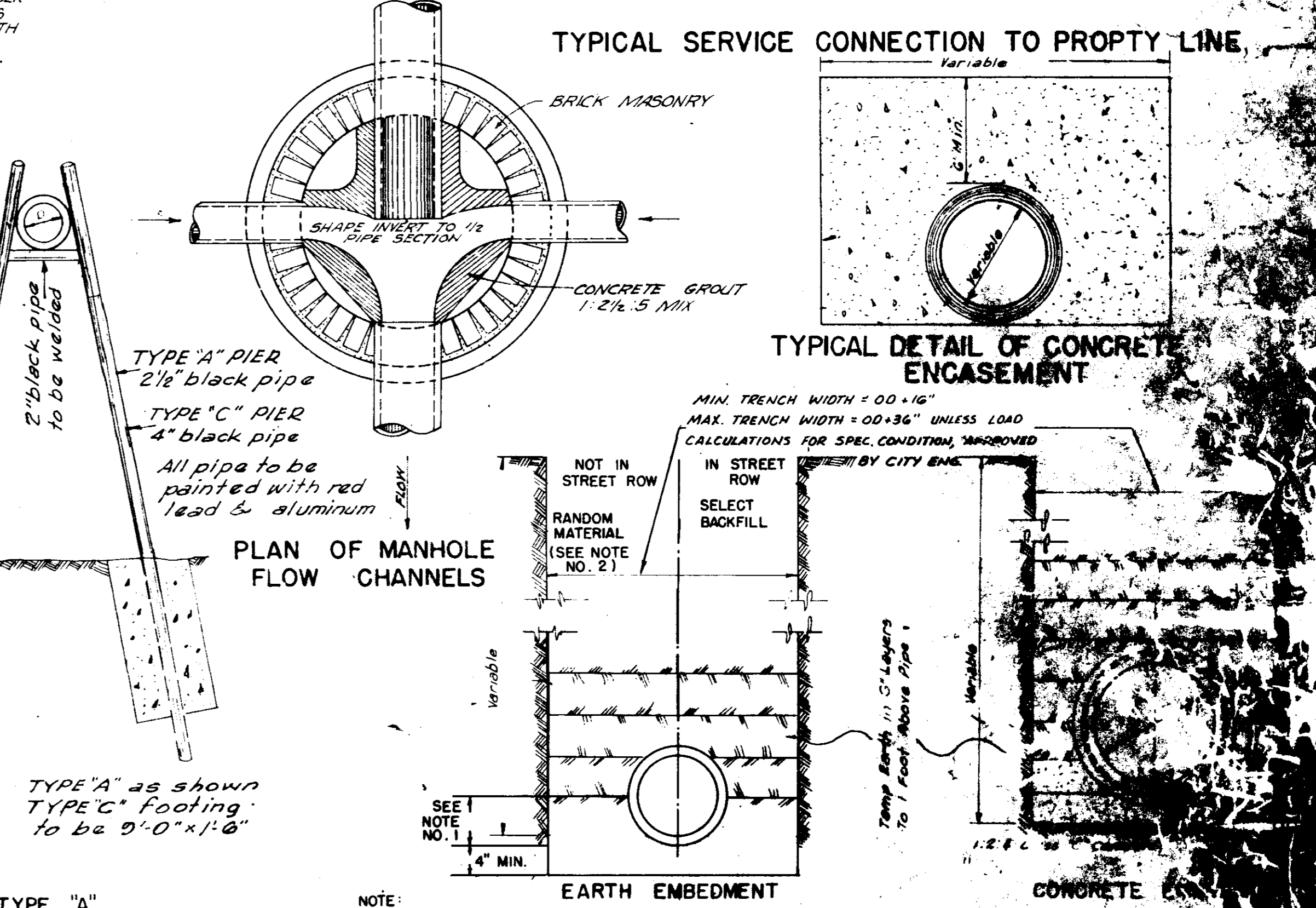
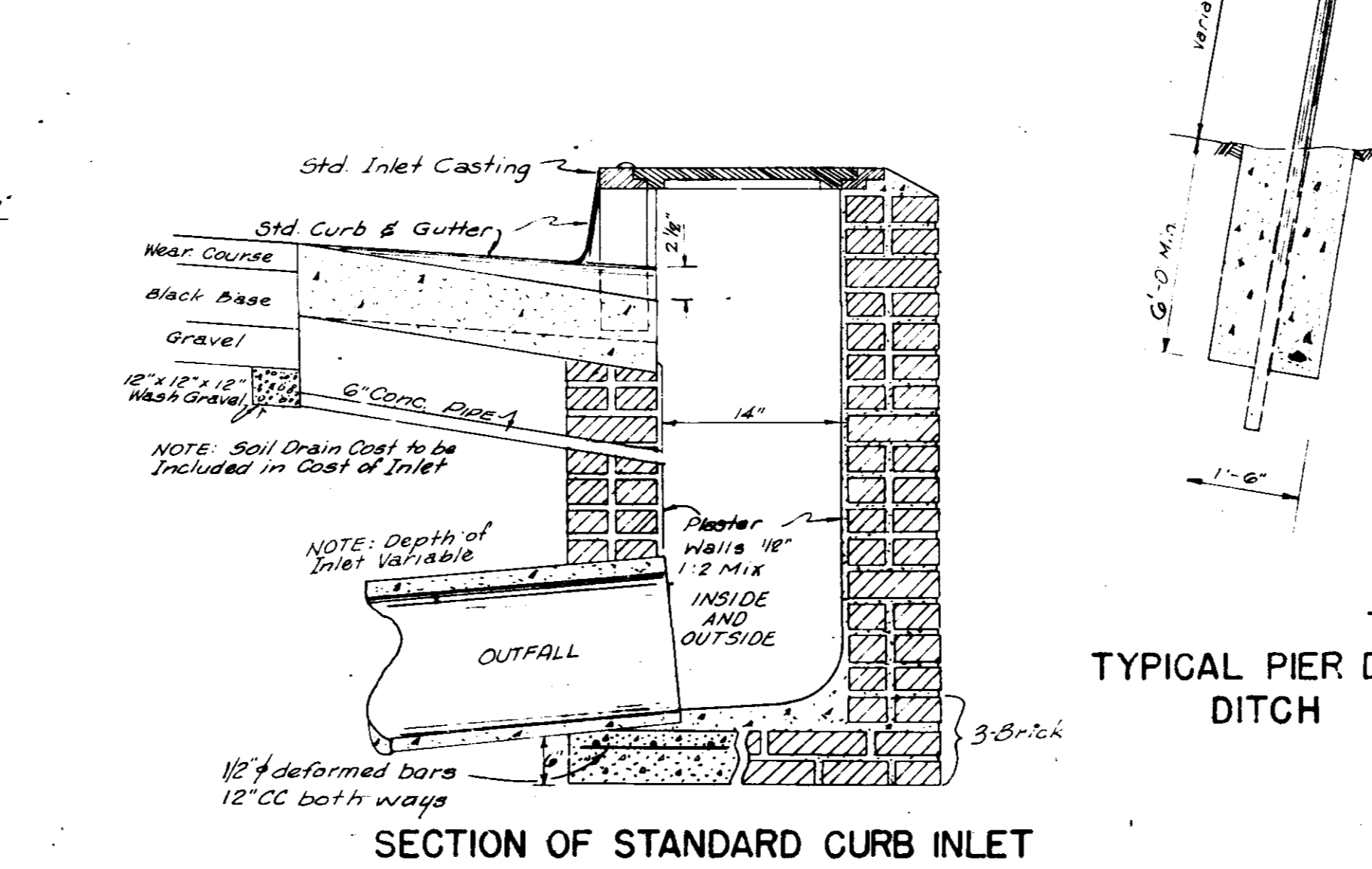
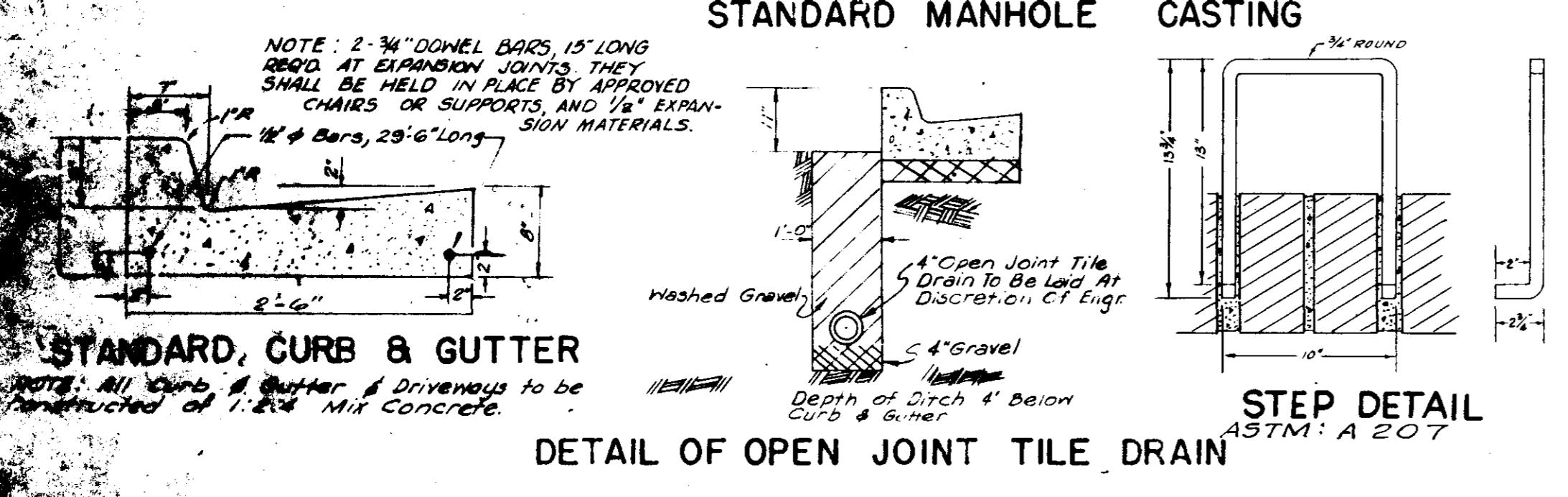
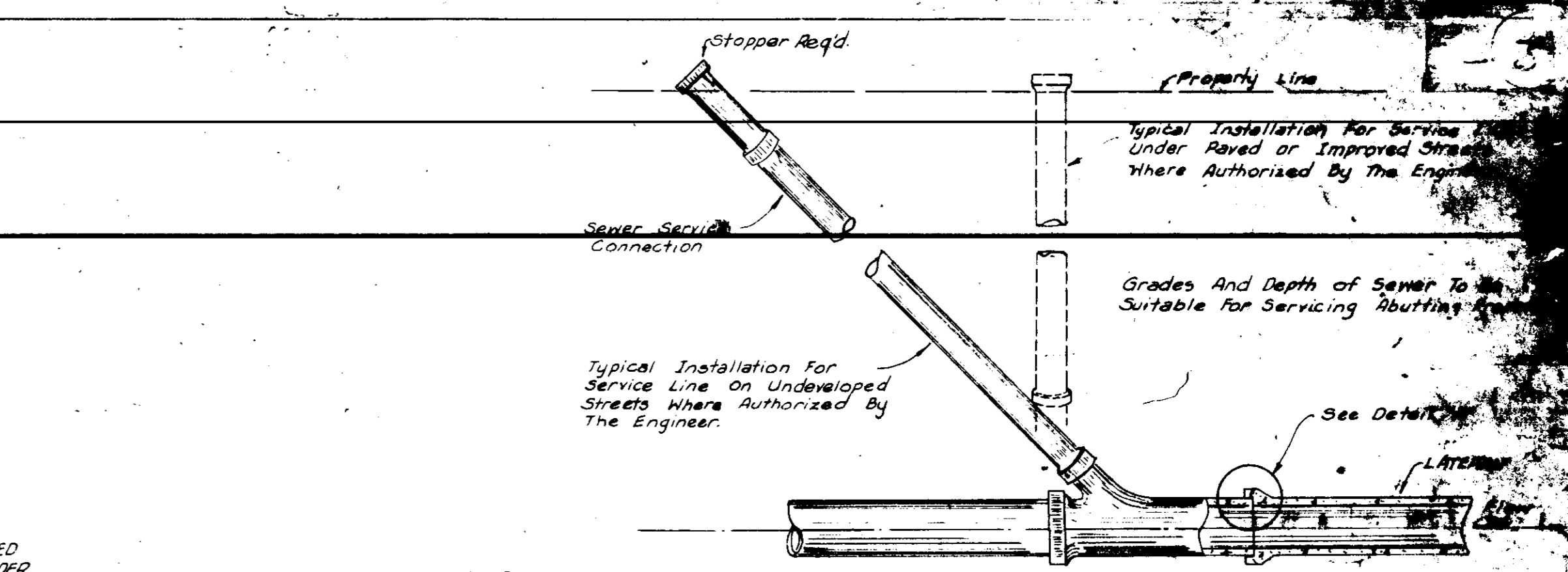
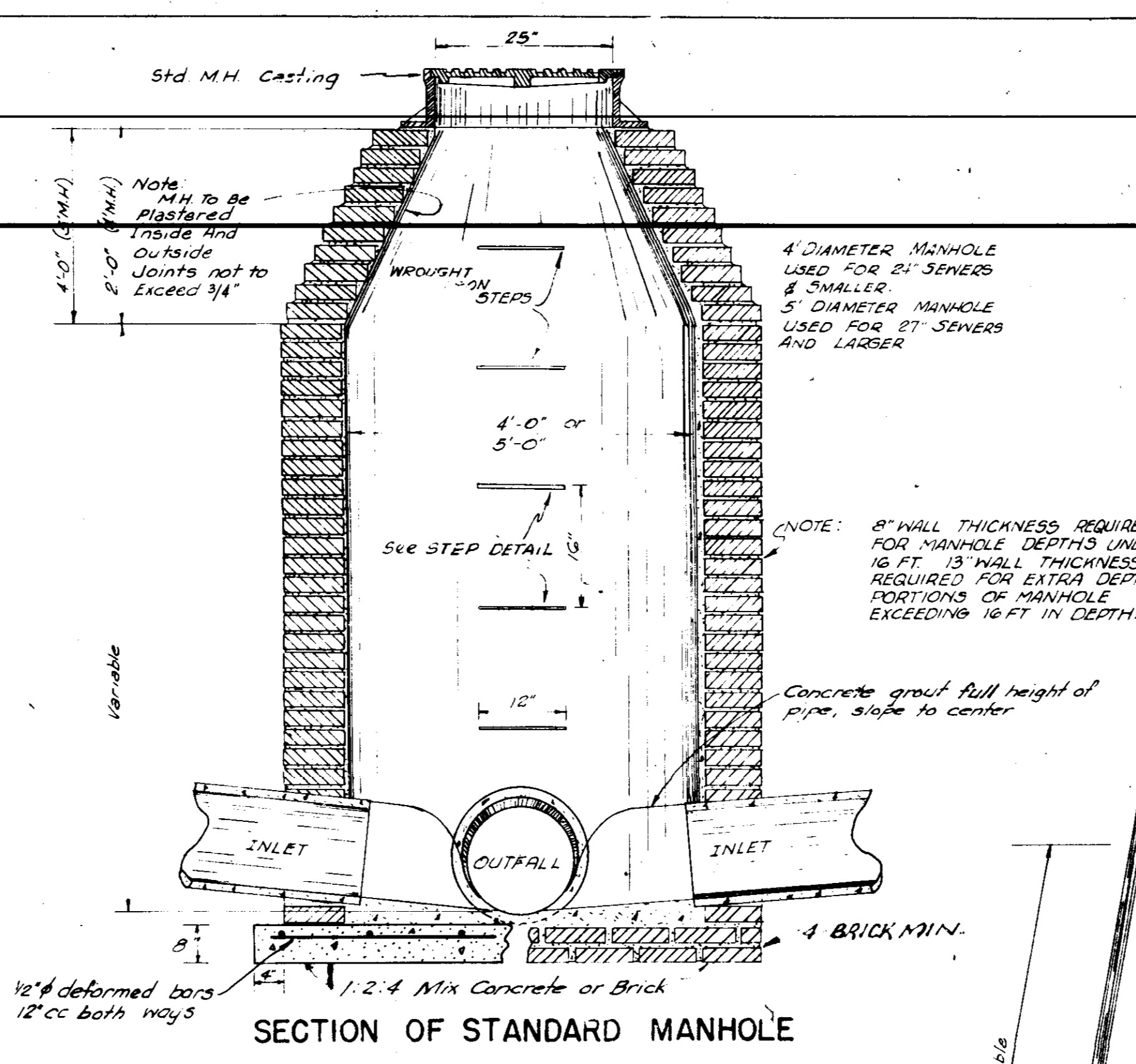
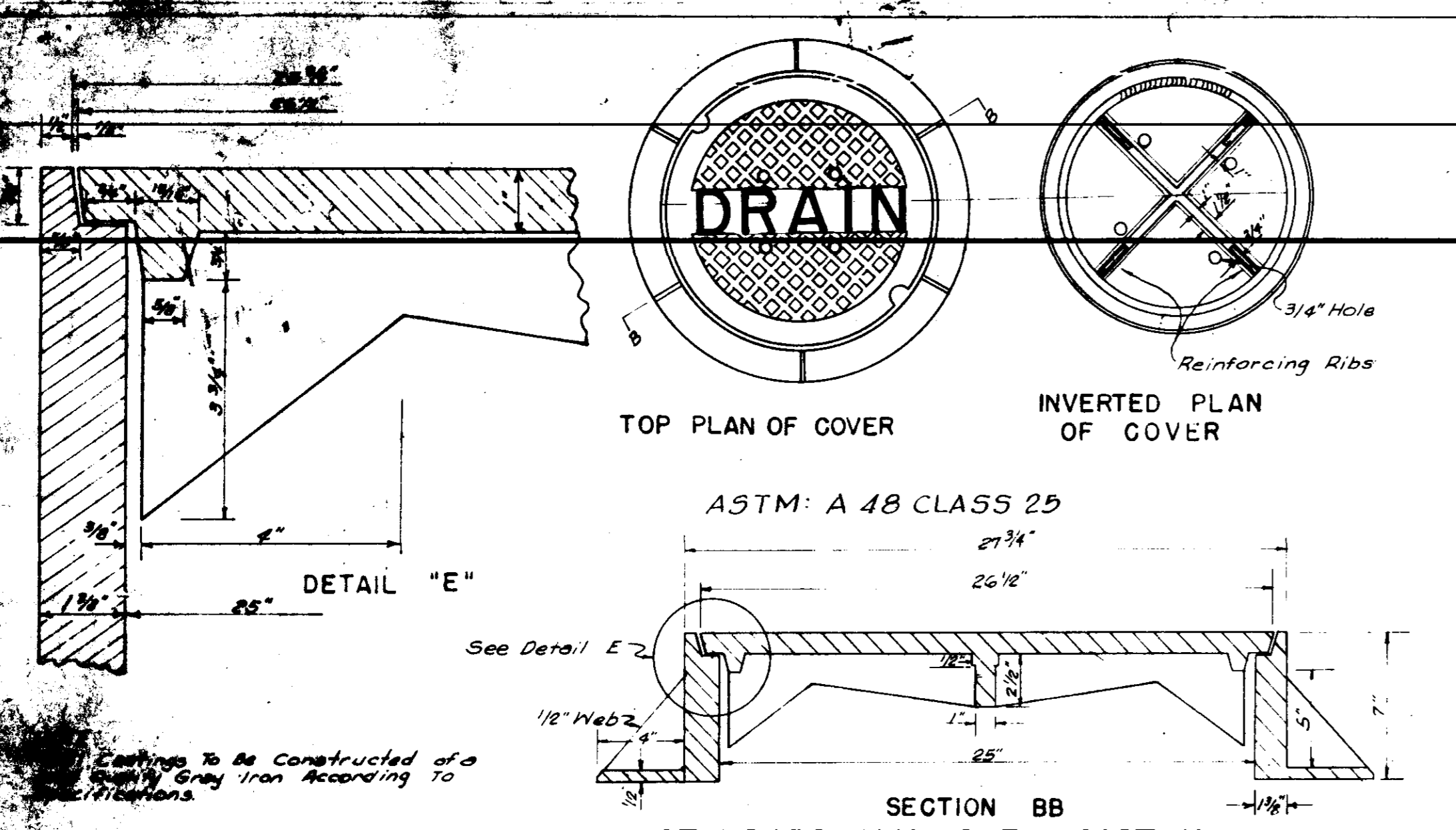


TYPICAL FIRE HYDRANT ASSEMBLY

- NOTES:
- 1 WHEN FIRE HYDRANTS ARE PLACED ON THE FRONTAGE OF A DIVIDED OR MULTI-LANE HIGHWAY, THE NOZZLES SHALL FACE AWAY FROM THE HIGHWAY RATHER THAN TOWARD THE HIGHWAY.
 - 2 ALL WATER MAIN CONNECTIONS SHALL BE RODDED WITH ALL STEEL RODS (3/4" MIN.) UNLESS OTHERWISE INSTRUCTED BY ENGINEER.
 - 3 GATE VALVE WILL BE REQUIRED WHEN CONNECTED TO A 10" DIAMETER OR LARGER MAIN.

WATER SYSTEM STANDARD DETAILS

JOE A WAGGNER	
Civil Engineer - Brandon / Jackson, Miss.	
DRAWN BY: H.J.	DATE: OCT. 1982
CHECKED BY: J.A.W.	SCALE: N.T.S.



Rev. 5-1-68 Sanitary Sewer Manholes & Appurtenances
Superseded by Std. 1-138-A (S)

STANDARD DETAILS FOR STREET PAVING & STORM SEWER CONSTRUCTION

DRAWN BY: DATE: 1-1-65
CHECKED BY: DATE: 1-1-65