

MATERIAL REQUIREMENTS

STREETS

1. CONCRETE FOR CURB AND GUTTER SHALL BE 3,000 PSI MINIMUM.
2. HOT BITUMINOUS PAVEMENT BASE COURSE MIXTURES AND MATERIALS SHALL MEET SPECIFICATION BB-1 OF THE MISSISSIPPI STANDARD SPECIFICATIONS FOR ROAD AND BRIDGE CONSTRUCTION, LATEST EDITION.
3. HOT BITUMINOUS PAVEMENT SURFACE COURSE MIXTURES AND MATERIALS SHALL MEET SPECIFICATION SC-1 OF THE MISSISSIPPI STANDARD SPECIFICATIONS FOR ROAD AND BRIDGE CONSTRUCTION, LATEST EDITION.

STORM DRAINAGE

1. PIPE - REINFORCED CONCRETE PIPE, ROUND ASTM C-76 OR ARCH, ASTM C-506.
2. JOINTS - O-RING RUBBER GASKETS, BITUMINOUS PLASTIC CEMENT OR PRE FORMED JOINT COMPOUND.
3. INLETS AND JUNCTION BOXES - PRE CAST CONCRETE, ASTM C-478 OR CONCRETE CAST-IN-PLACE. (CITY OF RIDGELAND STANDARD)
4. INLET CASTINGS - VULCAN RCB-7, C.L. DEWS NO. 2450, OR EQUAL AS APPROVED BY ENGINEER.

WATER

- MAIN - C-900 PVC CLASS 150 OR DUCTILE IRON, CEMENT LINED MORTAR PRESSURE CLASS 350 - ANSI/AWWA C151/A21.5.
- ENCASEMENT - POLYETHYLENE FILM ANSI/AWWA A21.5/C105.
- JOINTS - TYLON JOINTS WITH RUBBER GASKET ANSI/AWWA STANDARDS.
- FITTINGS - DUCTILE IRON, COMPACT FITTINGS MECHANICAL JOINT - ANSI/AWWA C153/A21.53-88.
- VALVES - DUCTILE IRON METROSEAL 250 RESILIENT SEATED GATE VALVES - AWWA C509.
- VALVE BOXES - CAST IRON, 3 PIECE ADJUSTABLE STAMPED W/ "WATER".
- SERVICE LINE - 3/4" MINIMUM, TYPE K COPPER, ASTM B88; POLYETHYLENE (PE), AWWA C901; OR POLYBUTYLENE (PB), AWWA C902.
- SVC SADDLE - FORD STYLE 304, OR APPROVED EQUAL.
- CORP. STOPS - MUELLER NO. H-15000 OR APPROVED EQUAL.
- CURB STOPS - MUELLER H-15175 OR APPROVED EQUAL.
- METER BOX - CAST IRON METER BOX W/ FLIP TOP READING COVER.

SEWER

- MAIN & SERVICE - PVC, SDR-26, ASTM D-3034 OR DUCTILE IRON, PROTECTO 401 CERAMIC EPOXY LINED.
- JOINTS - SLIP ON W/LOCKED-IN RUBBER GASKET, ASTM F-477.
- MANHOLES - PRE CAST CONCRETE, ASTM C-478. COAL TAR EPOXY COATING. REQUIRED ON INTERIOR AND EXTERIOR OF MANHOLE SECTIONS AND ON MANHOLE STEPS.
- PIPE BOOTS - KOR-N-SEAL MOLDED RUBBER CONNECTORS, OR EQUAL.
- FRAME & COVER - CAST IRON, ASTM A-78 OR EQUAL.
- STEPS - RUBBER COATED

GENERAL NOTES

STREET

1. STREET SUB GRADE AREAS WHERE EXPANSIVE CLAYS (CH) ARE ENCOUNTERED WITHIN 4' OF FINISHED GRADE SHALL BE UNDERCUT AND BACK FILLED AS REQUIRED TO SEPARATE PAVEMENT FROM EXPANSIVE CLAYS BY A MINIMUM 3 FOOT THICK LAYER OF SELECT SILTY CLAYS (CL) OR SANDY CLAYS (CL) HAVING A LIQUID LIMIT OF LESS THAN 40 AND A PI WITHIN THE RANGE OF 8 TO 20. THE BACK FILL AND FILL MATERIALS SHOULD BE SPREAD IN LOOSE LIFTS HAVING A MAXIMUM THICKNESS OF 9 IN. AND COMPACTED TO NOT LESS THAN 95 PERCENT OF STANDARD PROCTOR MAXIMUM DRY DENSITY (ASTM D 698) AT MOISTURE CONTENTS WITHIN 3 PERCENTAGE POINTS OF THE OPTIMUM MOISTURE CONTENT. STABILITY MUST BE EVIDENT DURING COMPACTION OF EACH LIFT BEFORE ANY SUBSEQUENT LIFTS OF FILL OR BACK FILL MATERIAL ARE ADDED.
2. UNDERCUTTING AND BACK FILLING SHALL EXTEND A MINIMUM OF 2 FEET BEYOND BACK OF CURB.
3. PRIOR TO PLACING ASPHALT BASE MATERIAL, PAVING CONTRACTOR SHALL 1) FINE-GRADE THE SUB GRADE MATERIAL TO THE PROPER SECTION TO PERMIT PLACEMENT OF THE REQUIRED THICKNESS OF BASE COURSE; 2) COMPACT AND PROOF-ROLL SUB GRADE TO ACHIEVE STABILITY; AND ENSURE REQUIRED SUB GRADE DENSITY HAS BEEN ACHIEVED AND VERIFIED BY SOILS TESTING LABORATORY.

CURB AND GUTTER

1. CURB AND GUTTER SHALL BE 24" STANDARD (SEE DETAIL).
2. SUB GRADE BENEATH CURB AND GUTTER SHALL BE FINE GRADED AND COMPACTED TO ACHIEVE STABILITY UNDER PRESSURE OF THE REAR WHEEL LOADING OF A MOTOR GRADER MOVING SLOWLY OVER THE CURB AND GUTTER SUB GRADE.
3. AFTER FORMS AND/OR CURB AND GUTTER STRING LINES HAVE BEEN SET AND BEFORE CONCRETE IS POURED, CONTRACTOR SHALL VERIFY THAT ALL GUTTERS DRAIN TO INLETS. MINIMUM SLOPE: 9" PER 100'
4. EXPANSION JOINTS IN CURB AND GUTTER SHALL BE 3/4" JOINT MATERIAL PLACED AT 30' (MAXIMUM) INTERVALS.
5. CONTRACTION JOINTS IN CURB AND GUTTER SHALL BE SCORED AT INTERVALS NOT GREATER THAN 10 FEET AND SPACED EQUALLY BETWEEN EXPANSION JOINTS.
6. CONCRETE FOR CURB AND GUTTER SHALL BE 3,000 PSI MINIMUM.
7. 48" SIDEWALKS SHALL BE CONSTRUCTED BY THE BUILDER ON EACH LOT AFTER ALL UTILITY SERVICES ARE INSTALLED AND THE SITE HAS BEEN GRADED AND SHAPED TO ITS FINISHED TOPOGRAPHY. NOT A PART OF THIS PROJECT.

STORM DRAINAGE & EROSION CONTROL

1. ALL STORM DRAINAGE PIPE AND INLETS SHALL BE FLUSHED AND CLEARED OF ANY CONSTRUCTION MATERIALS AND/OR SEDIMENT UPON PROJECT COMPLETION.
2. THE CONSTRUCTION EXIT SHALL BE MAINTAINED SUCH THAT ALL MATERIALS SPILLED, DROPPED, WASHED OR TRACKED FROM VEHICLES OR SITE ONTO ROADWAYS MUST BE REMOVED IMMEDIATELY.
3. INLET SEDIMENT TRAPS SHALL CONSIST OF HAY BALES FULLY SURROUNDING EACH INLET.
4. SEDIMENT BARRIERS SHALL BE HAY BALES PLACED IN ALL DRAINAGE WAYS TO PREVENT SEDIMENT FROM LEAVING CONSTRUCTION SITE.

WATER & SEWER

1. ALL WATER AND SANITARY SEWER CONSTRUCTION TO BE IN ACCORDANCE WITH THE CITY OF RIDGELAND STANDARD SPECIFICATIONS.
2. WHERE A SANITARY SEWER MAIN OR SERVICE LINE CROSSES ABOVE A WATER MAIN OR WITHIN 18 INCHES BELOW A WATER MAIN, OR WITHIN 10 FEET ON EITHER SIDE OF A WATER MAIN THE SEWER MAIN OR SERVICE LINE SHALL BE CONSTRUCTED OF DUCTILE IRON.
3. SEWER SERVICE LINES SHALL BE 6"; SEWER MAINS SHALL BE 8" SDR-26 PVC.
4. WATER SERVICE LINES SHALL BE 3/4" POLYBUTYLENE (1" WHERE NOTED ON PLANS); WATER MAINS SHALL BE 8" C-900 PVC CLASS 150
5. SERVICES FOR WATER AND SEWER SHALL BE LOCATED NEAR THE CENTER OF ALL LOTS WITH 10 FOOT SEPARATION.
6. BACK FILL OF ALL TRENCHES UNDER EXISTING OR PROPOSED PAVEMENTS AND CURB AND GUTTER SHALL BE MECHANICALLY COMPACTED IN 9" MAXIMUM LOOSE LIFTS TO A MINIMUM OF 95% STANDARD PROCTOR PEAK DRY DENSITY.
7. DEFLECTION TEST SHALL BE PERFORMED ON ALL FLEXIBLE PIPE. THE TEST SHALL BE CONDUCTED AFTER THE FINAL BACK FILL HAS BEEN IN PLACE AT LEAST 30 DAYS. DEFLECTION TEST SHALL BE RUN USING A RIGID BALL OR MANDREL HAVING A DIAMETER EQUAL TO 95% OF THE INSIDE DIAMETER OF THE PIPE. THE TEST SHALL BE PERFORMED WITHOUT MECHANICAL PULLING DEVICES.
8. WATER MAINS SHALL BE INSTALLED WITH 4' MINIMUM COVER UNDER ROADWAY SECTIONS AND 3' MINIMUM COVER ELSEWHERE.
9. CONTRACTOR SHALL MAINTAIN RECORDS DURING CONSTRUCTION OF HORIZONTAL LOCATION OF ALL WATER AND SEWER SERVICES FOR AS BUILT RECORDS.

INDEX TO DRAWINGS

- 1 COVER SHEET
- 2 GENERAL NOTES AND INDEX TO DRAWINGS
- 3 STREET & LOT LAYOUT
- 4 WATER & SEWER LAYOUT
- 5 STORM DRAINAGE LAYOUT
- 6 PLAN AND PROFILE - WENDOVER WAY STA. 11+00 - STA. 21+99.85
STORM DRAIN - LOTS 167/168
- 7 PLAN AND PROFILE - EASTWYCK DRIVE STA. 0+00 - STA. 5+38.68
EASTWYCK PLACE
- 8 PLAN AND PROFILE - WENDOVER DRIVE STA. 0+00 - STA. 5+79.83
ABBOTS LANE STA. 4+82.58 - STA. 6+18.26
STORM DRAIN - LOTS 141/142 LOTS 138/139
- 9 PLAN AND PROFILE - BERRIDGE DRIVE STA. 14+32.38 - STA. 20+39.06
STORM DRAIN - LOTS 172/173
SANITARY SEWER - CONNECTION TO OUTFALL
- 10 PLAN AND PROFILE - MALLISON PLACE STA. 0+00 - STA. 2+60.47
SANITARY SEWER LOTS 198-200
- 11 STANDARD MISCELLANEOUS DETAILS
- 12 STANDARD SEWER DETAILS
- 13 MISSISSIPPI STATE HIGHWAY DEPARTMENT BOX CULVERT (DOUBLE CELL)

LEGEND

—	PROPERTY LINE
—	LOT LINE
- - - - -	RIGHT OF WAY LINE
- - - - -	EASEMENT
.....	SETBACK LINE
- - - - -	CENTER LINE
—	EDGE OF PAVEMENT
—	BACK OF CURB
- - - - -	EXISTING CONTOUR (1' INTERVAL - NVGD DATUM)
—●—	PROPOSED SANITARY SEWER & MANHOLE
—□—	PROPOSED STORM SEWER & CATCH BASIN
—SS—	SANITARY SEWER
—	WATER LINE
—V—	PROPOSED WATER VALVE
—X—	PROPOSED FIRE HYDRANT
—T—	PROPOSED TEE

RECORD DRAWING

BY: *R. Vann* DATE: *12/10/98*



WENDOVER, PART 3A
A DEVELOPMENT OF
LAKE HARBOUR ROAD, L.P.

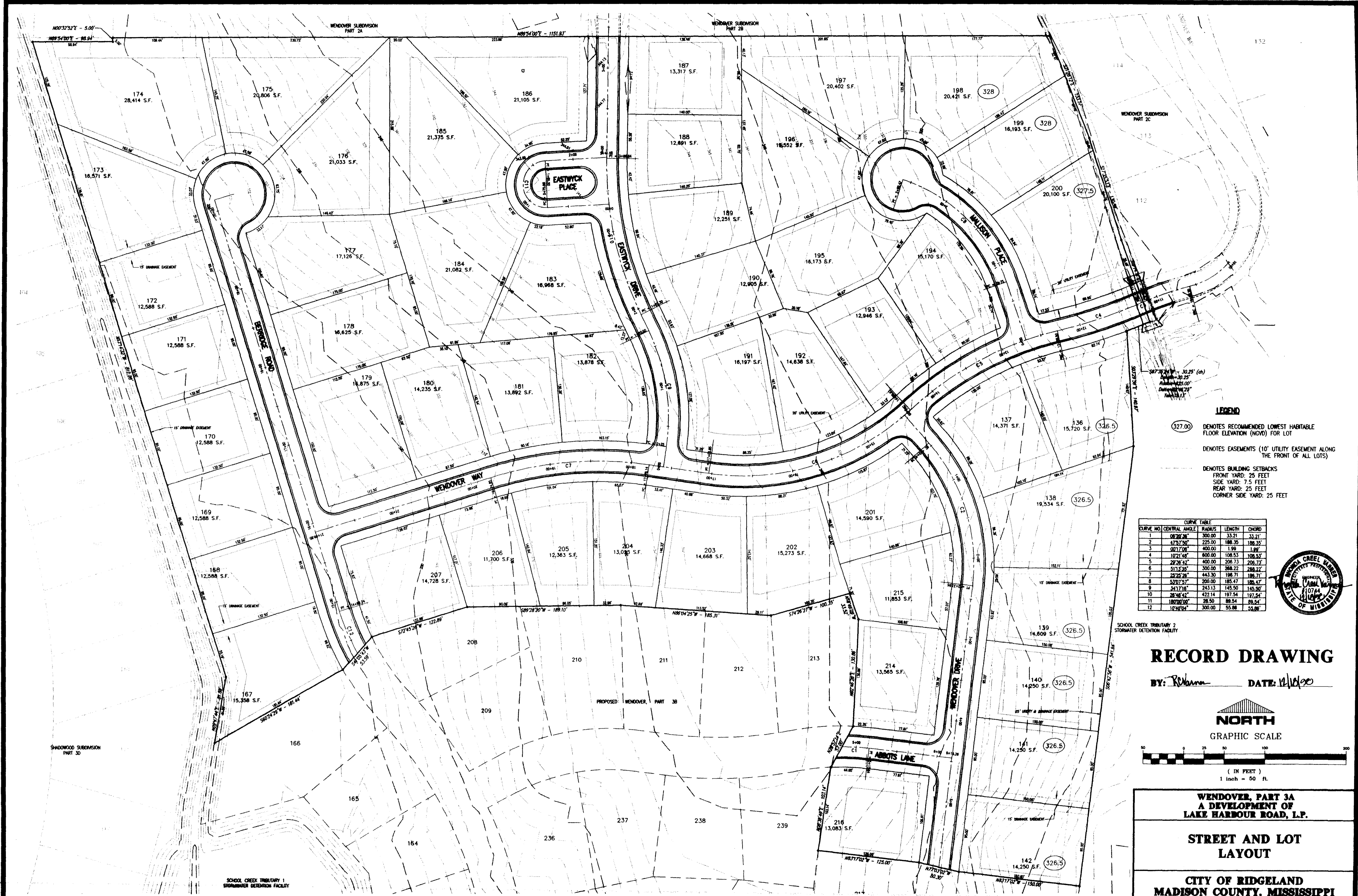
GENERAL NOTES
AND INDEX TO DRAWINGS

CITY OF RIDGELAND
MADISON COUNTY, MISSISSIPPI

DESIGNED BY: PHW	DATE: 07/98	STERLING Consultants	DRAWING NO. 2 of 13
CHECKED BY: PHW	DATE: 07/98		
SCALE: AS SHOWN			

AS-BUILT UTILITIES AND REVISED LOT LAYOUT	PHW	12/10/98
REVISION	BY	DATE

WENDOVER-3A-001.dwg Mon Jan 11 08:58:41 1999 Paul H. Wilhelm - Sterling Consultants, Inc.



LEGEND

- (327.00) DENOTES RECOMMENDED LOWEST HABITABLE FLOOR ELEVATION (NGVD) FOR LOT
- DENOTES EASEMENTS (10' UTILITY EASEMENT ALONG THE FRONT OF ALL LOTS)
- DENOTES BUILDING SETBACKS
FRONT YARD: 25 FEET
SIDE YARD: 7.5 FEET
REAR YARD: 25 FEET
CORNER SIDE YARD: 25 FEET

CURVE TABLE

CURVE NO.	CENTRAL ANGLE	RADIUS	LENGTH	CHORD
1	08°20'36"	300.00	33.21	33.21
2	47°37'50"	225.00	188.35	188.35
3	02°17'08"	400.00	1.99	1.99
4	107°11'48"	800.00	108.53	108.53
5	28°26'42"	400.00	206.73	206.73
6	51°13'36"	300.00	288.22	288.22
7	28°26'26"	443.30	196.71	196.71
8	53°07'57"	200.00	185.47	185.47
9	24°17'18"	243.13	145.50	145.50
10	28°26'42"	422.14	197.54	197.54
11	18°02'00"	28.50	89.54	89.54
12	1°42'04"	300.00	55.88	55.88



RECORD DRAWING

BY: *Paul H. Wilhelm* DATE: *12/10/98*

NORTH
GRAPHIC SCALE

(IN FEET)
1 inch = 50 ft

**WENDOVER, PART 3A
A DEVELOPMENT OF
LAKE HARBOUR ROAD, L.P.**

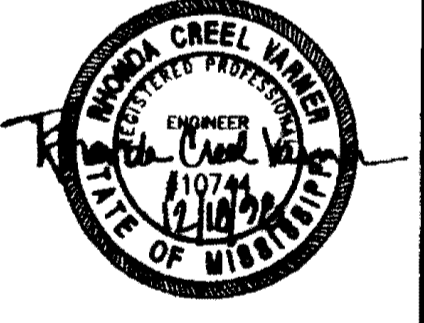
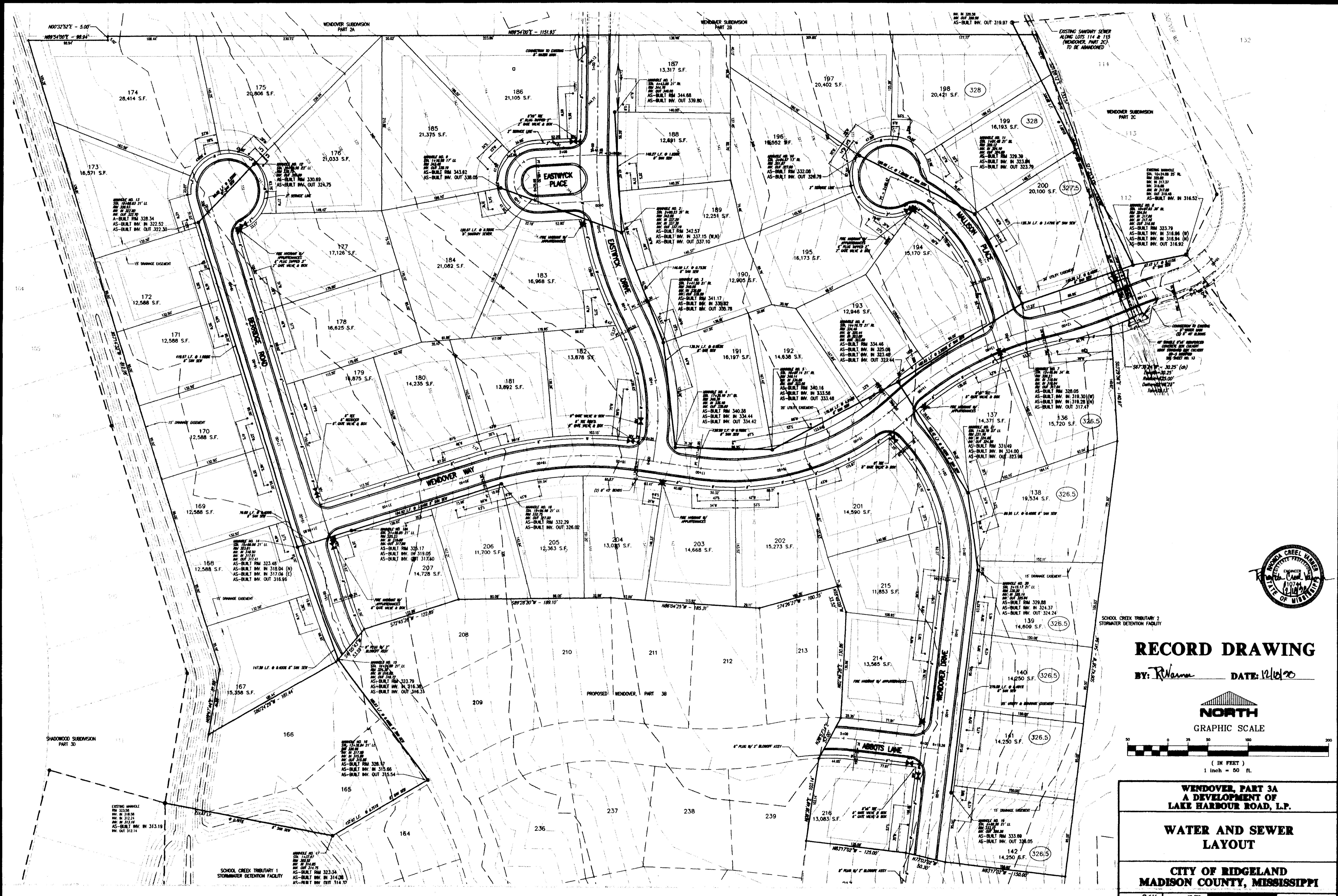
**STREET AND LOT
LAYOUT**

**CITY OF RIDGELAND
MADISON COUNTY, MISSISSIPPI**

AS-BUILT UTILITIES AND REVISED LOT LAYOUT	PHW	1/16/99
ADDED AS-BUILT INFORMATION FOR PART 3A-1	PHW	1/16/99
REVISE PER CITY OF RIDGELAND COMMENTS	PHW	1/16/99
BY	DATE	

DESIGNED BY: RCV	DATE: 01/20	STERLING CONSULTANTS	DRAWING NO. 3 of 13
DRAWN BY: PHW	DATE: 01/20		
CHECKED BY: RCV	DATE: 01/20		
SCALE: AS SHOWN			

G:\WENDOVER\3A-001.dwg Mon Jan 11 09:00:25 1999 Paul H. Wilheim - Sterling Consultants, Inc.



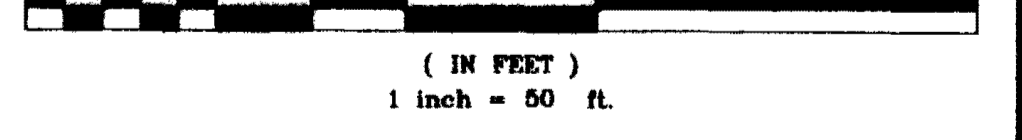
RECORD DRAWING

BY: *R. Wynn* DATE: *12/19/98*



NORTH

GRAPHIC SCALE



**WENDOVER, PART 3A
A DEVELOPMENT OF
LAKE HARBOUR ROAD, L.P.**

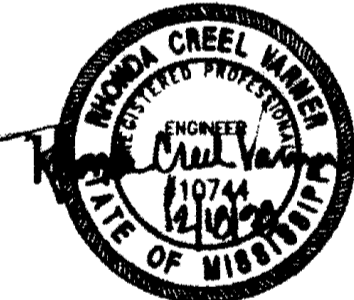
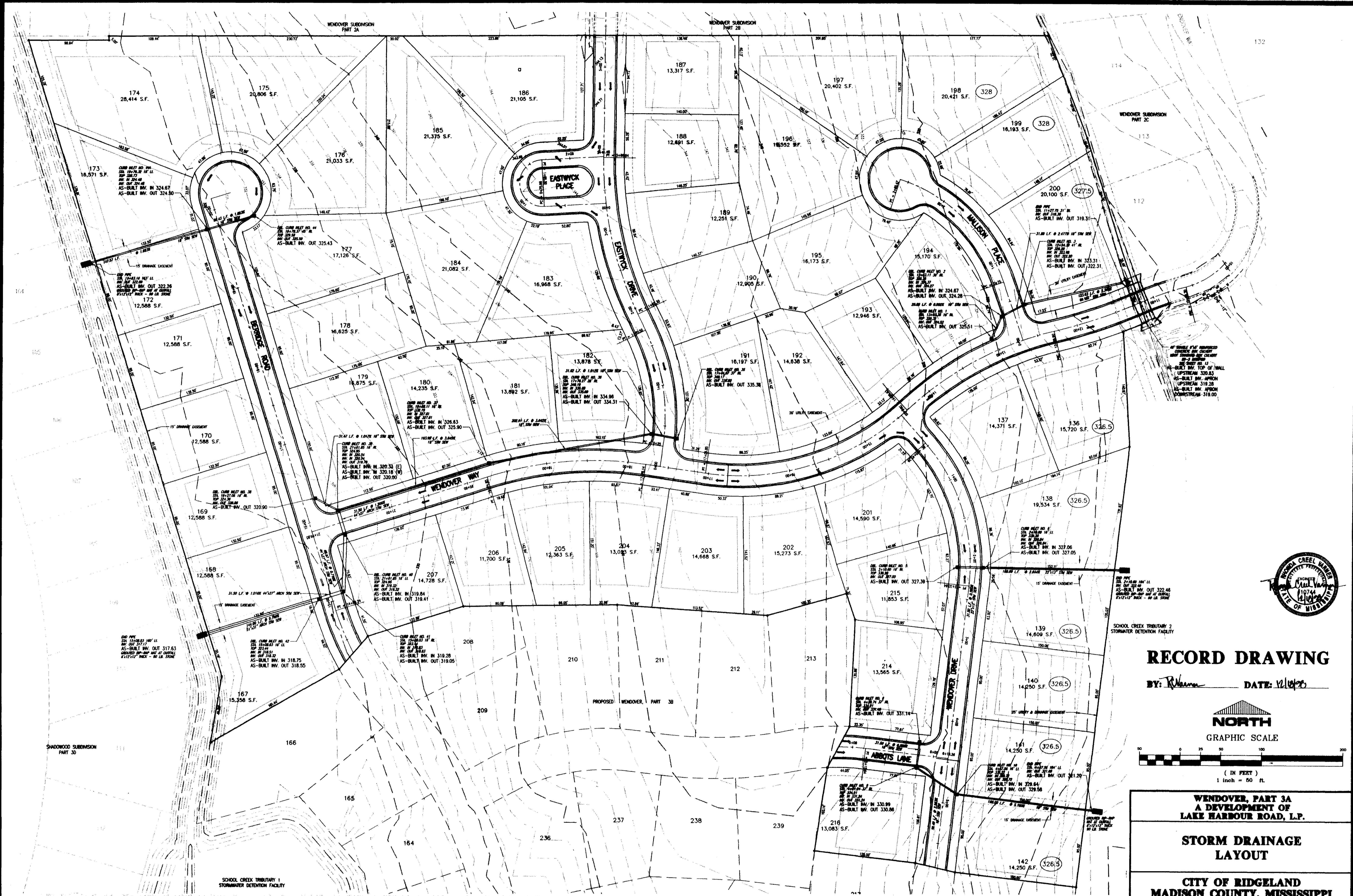
**WATER AND SEWER
LAYOUT**

**CITY OF RIDGLAND
MADISON COUNTY, MISSISSIPPI**

REVISION	DATE	BY	DATE
AS-BUILT UTILITIES AND REVISED LOT LAYOUT	12/19/98	PHW	12/19/98
ADDED AS-BUILT INFORMATION FOR PART 3A-1	12/19/98	PHW	12/19/98
REVISE PER CITY OF RIDGLAND COMMENTS	12/22/98	PHW	12/22/98

DESIGNER	DATE	SCALE		DRAWING NO. 4 of 13
DRAWN	DATE			
CHECKED	DATE			
SCALE	DATE			

B:\MENDOVER\3A-001.dwg Mon Jan 11 09:02:16 1999 Paul H. Wilhelm - Sterling Consultants, Inc.



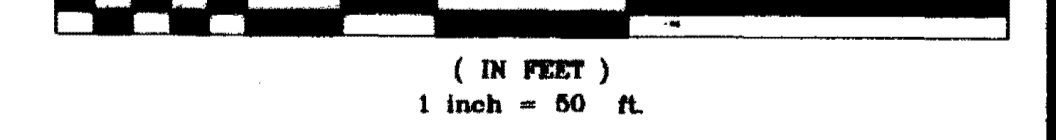
RECORD DRAWING

BY: *R. Williams* DATE: *12/14/98*



NORTH

GRAPHIC SCALE



**WENDOVER, PART 3A
A DEVELOPMENT OF
LAKE HARBOUR ROAD, L.P.**

**STORM DRAINAGE
LAYOUT**

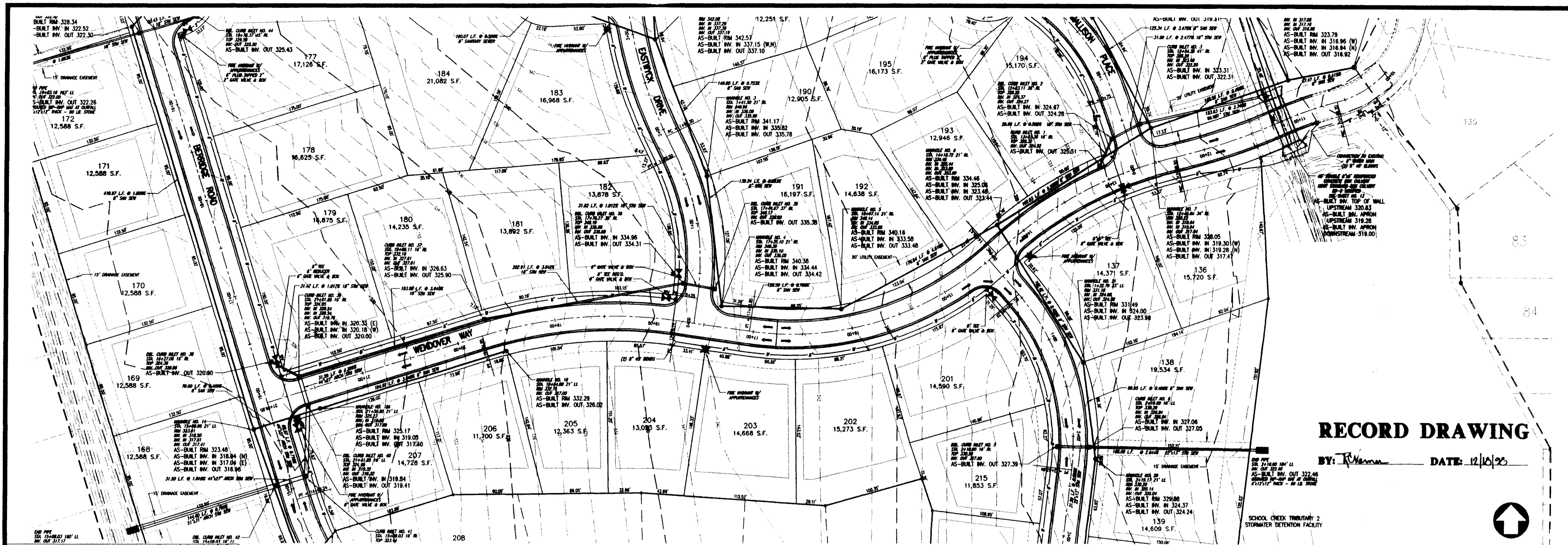
**CITY OF RIDGLAND
MADISON COUNTY, MISSISSIPPI**

REVISION	BY	DATE
AS-BUILT UTILITIES AND REVISED LOT LAYOUT	PHW	12/14/98
ADDED AS-BUILT INFORMATION FOR PART 3A-1	PHW	12/14/98
REVISE PER CITY OF RIDGLAND COMMENTS	PHW	12/14/98

DATE	BY	REVISION
12/14/98	PHW	AS-BUILT
12/14/98	PHW	AS-BUILT
12/14/98	PHW	AS-BUILT



DRAWING NO.
5 of 13



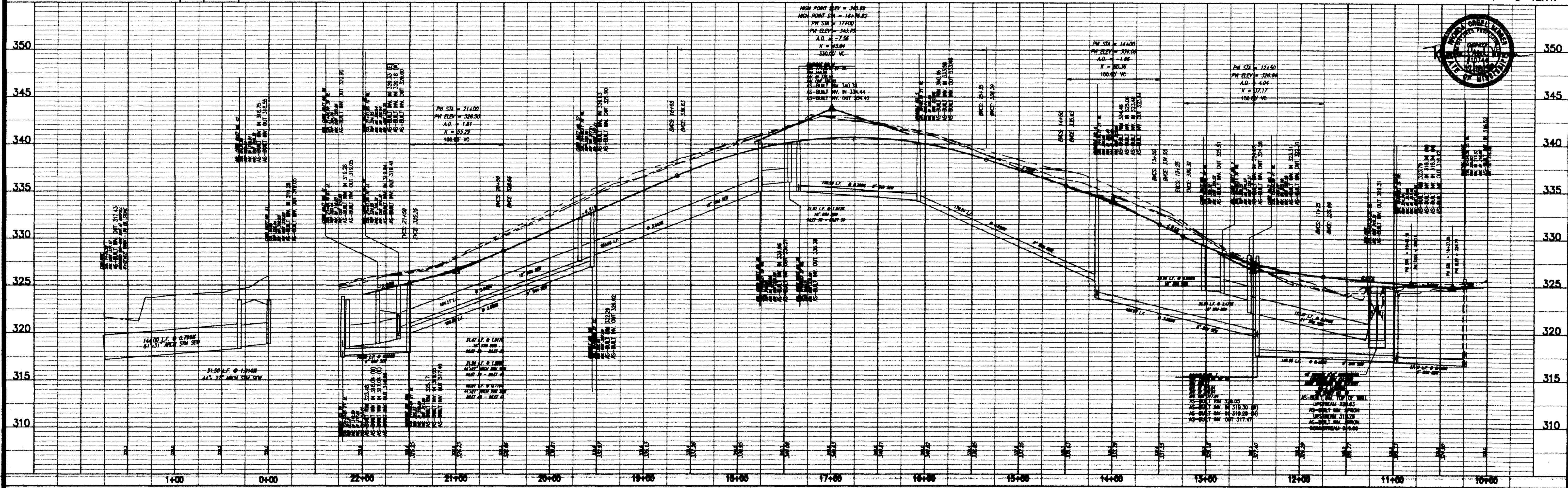
RECORD DRAWING

BY: *R. H. ...* DATE: 12/10/23



SCALE 1" = 50' HORIZ.
1" = 5' VERT.

AS-BUILT UTILITIES AND REVISED LOT LAYOUT	PHW	DATE
REVISE PER CITY OF RIDGELAND COMMENTS	PHW	12/02/23
BY	DATE	



WENDOVER, PART 3A
CITY OF RIDGELAND
MADISON COUNTY, MISSISSIPPI

PLAN AND PROFILE - WENDOVER WAY STA. 11+00 - STA. 21+99.85
STORM DRAIN - LOTS 167/168

Prepared For
LAKE HARBOUR ROAD, L.P.

Checked By: RCV DATE: 09/20
Drawn By: PHW DATE: 09/20
Scale: 1"=50' HORIZ 1"=5' VERT.
Drawing No. 6 of 13

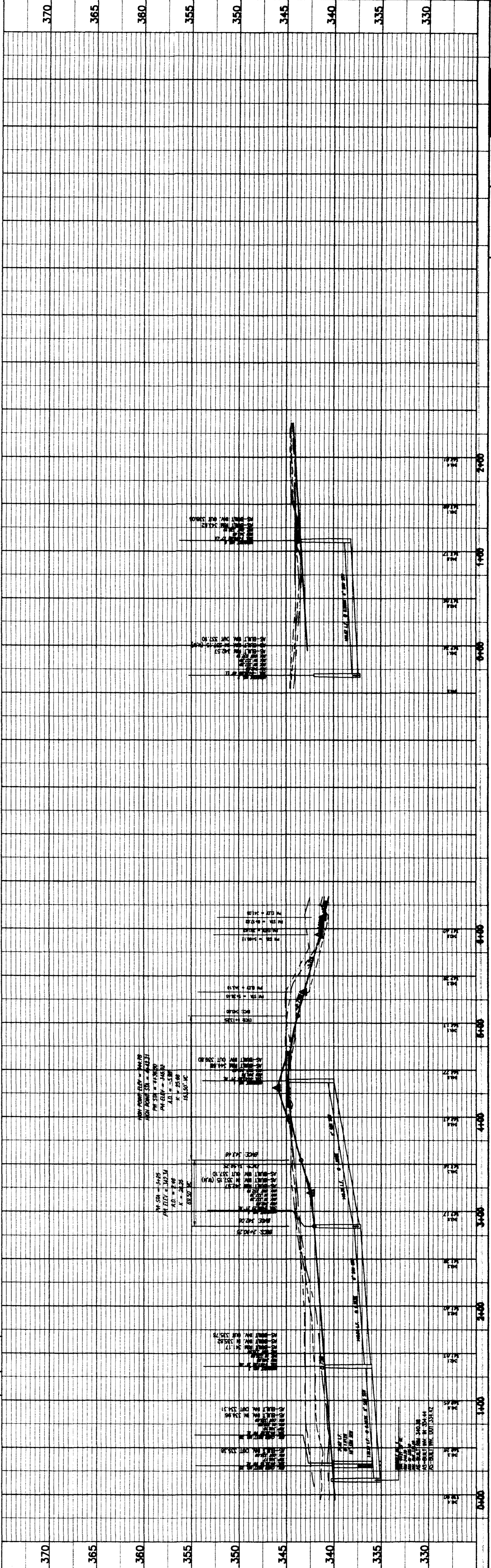
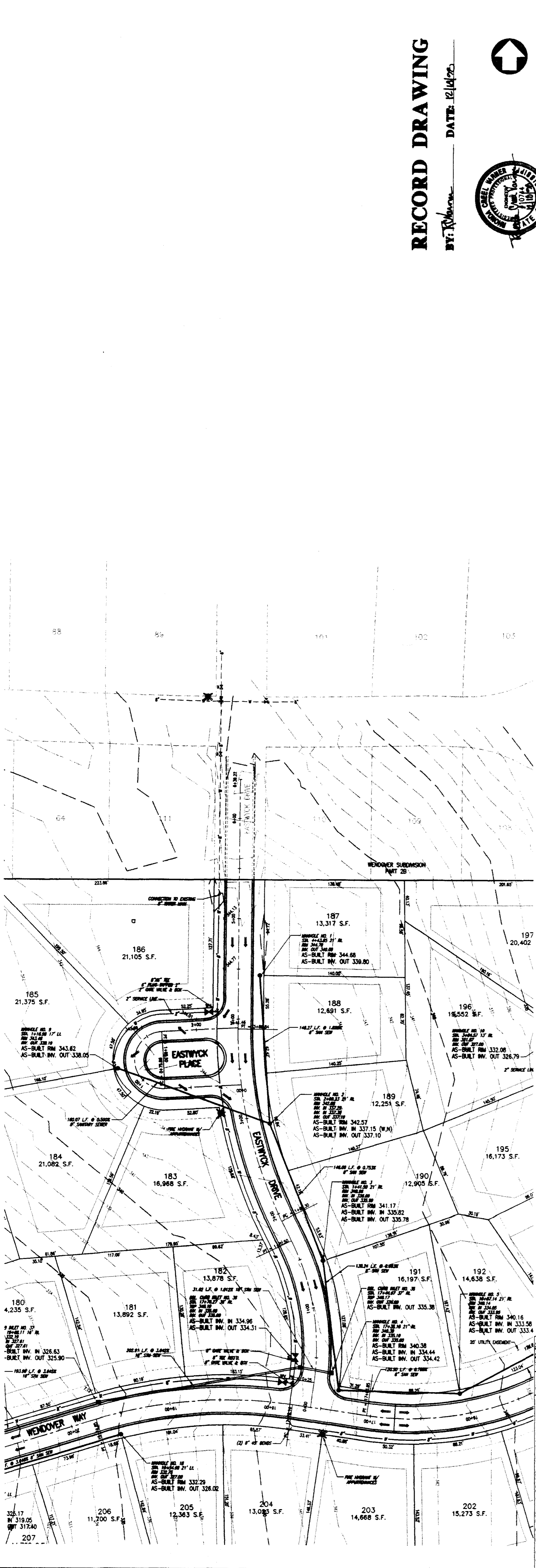
G:\WENDOVER3A-001.dwg Mon Jan 11 09:05:16 1999 Paul H. Wintheiss - Sterling Consultants, Inc.

RECORD DRAWING

BY: *[Signature]* DATE: 12/14/20



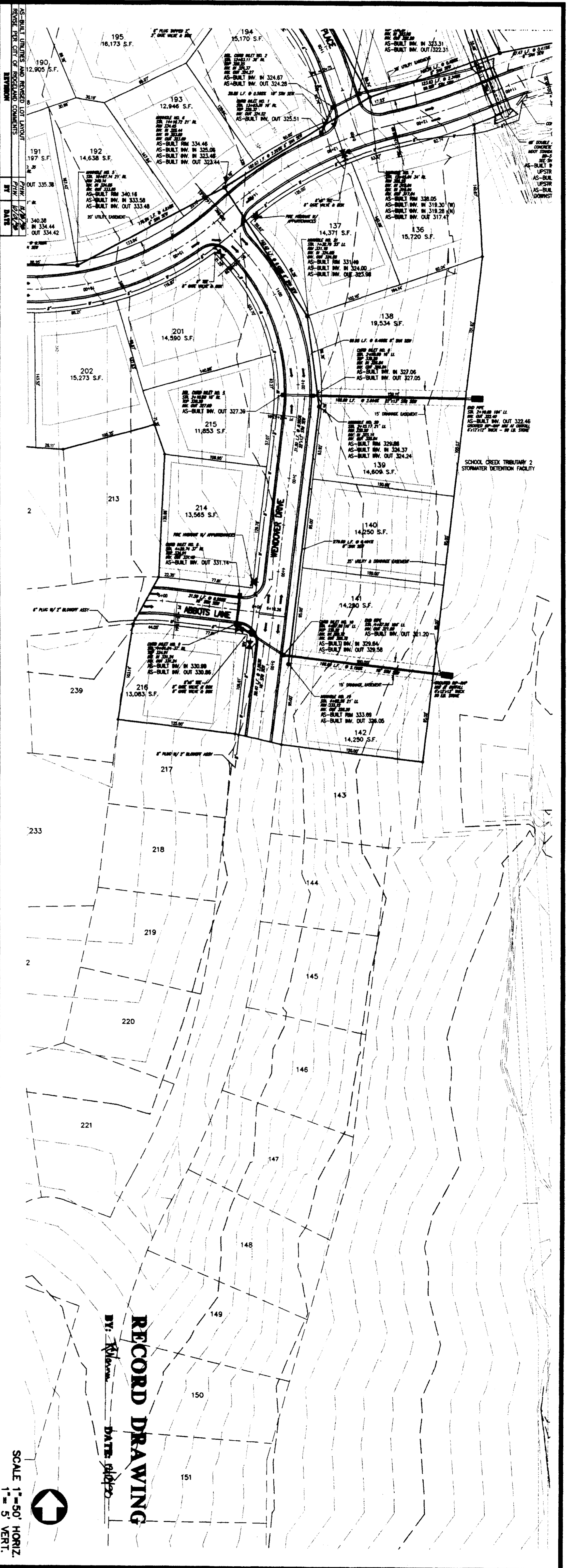
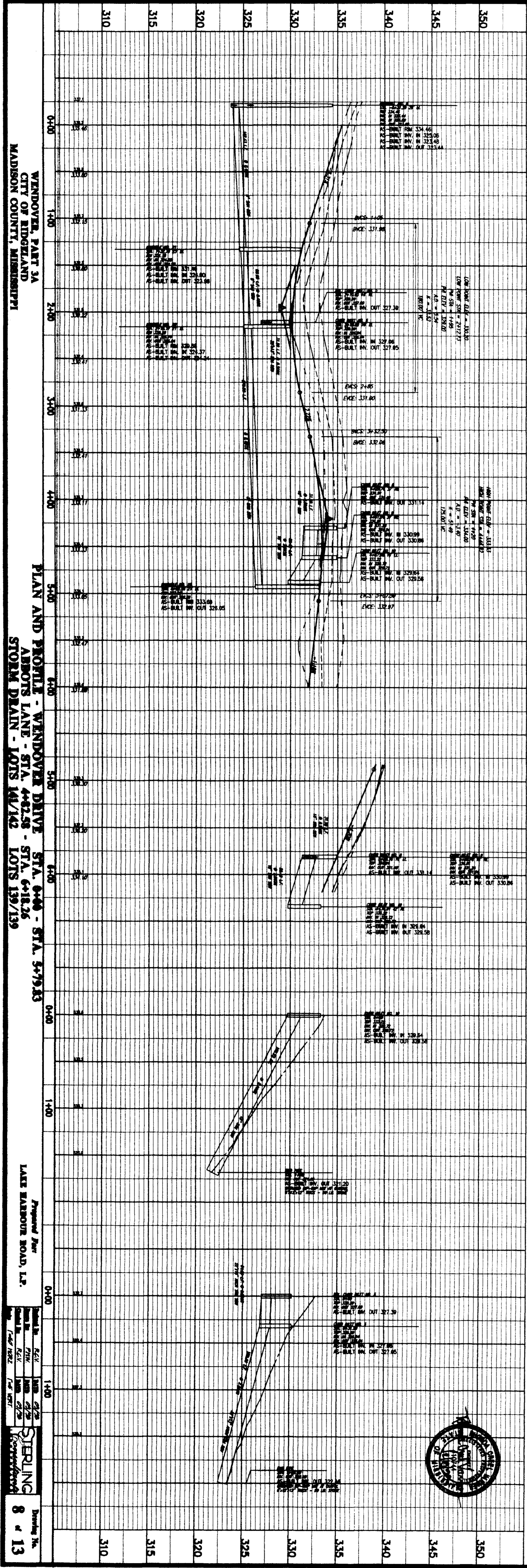
SCALE 1" = 50' HORIZ.
1" = 5' VERT.

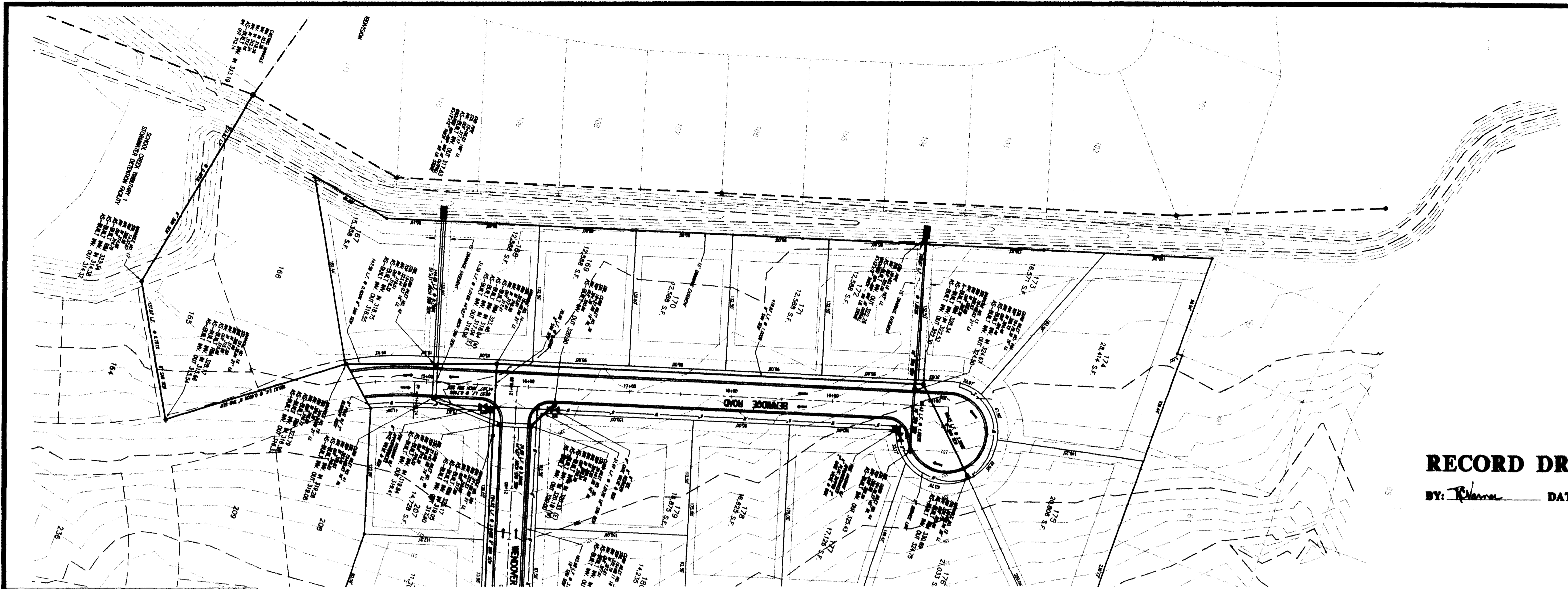


WENDOVER, PART 3A
CITY OF RIDGELAND
MADISON COUNTY, MISSISSIPPI

Proposed For
LAKE HARBOUR ROAD, L.P.

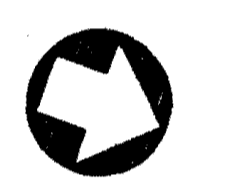
STERLING
DRAWING No. 7 of 13





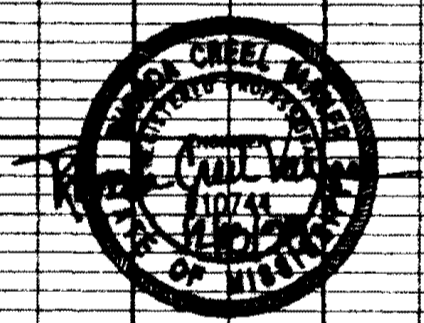
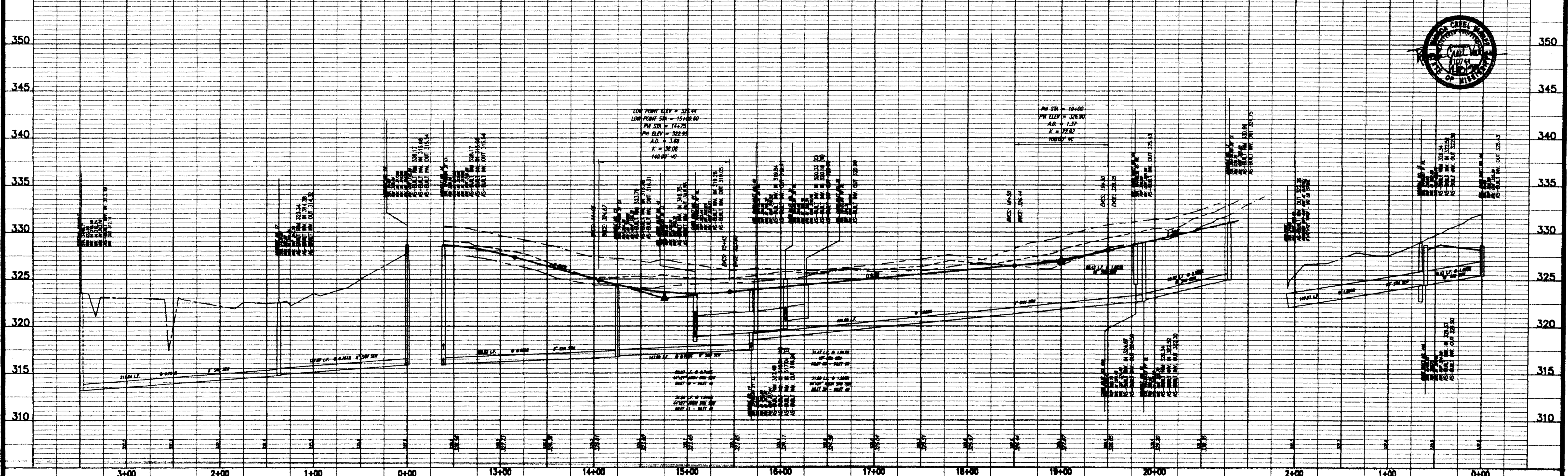
RECORD DRAWING

BY: *R. H. ...* DATE: 12/10/20



SCALE 1"=50' HORIZ.
1"= 5' VERT.

REVISION	BY	DATE
AS-BUILT UTILITIES AND REVISED LOT LAYOUT	PHW	12/10/20
REVISE PER CITY OF RIDGELAND COMMENTS	PHW	12/21/20

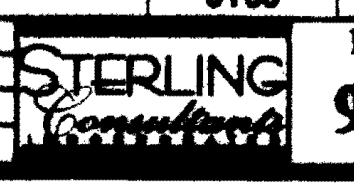


WENDOVER, PART 3A
CITY OF RIDGELAND
MADISON COUNTY, MISSISSIPPI

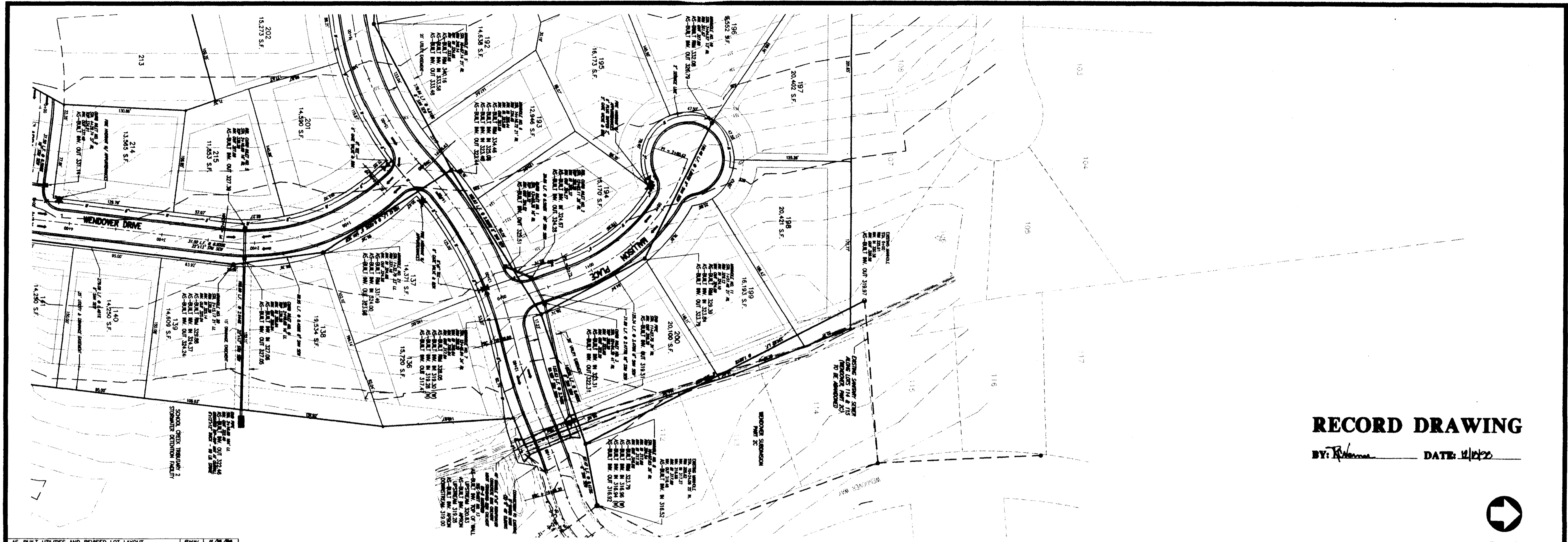
PLAN AND PROFILE - BERRIDGE DRIVE STA. 14+32.38 - STA. 20+39.06
STORM DRAIN - LOTS 172/173
SANITARY SEWER - CONNECTION TO OUTFALL

Prepared For
LAKE HARBOUR ROAD, L.P.

Checked By	REV	DATE
PHW	01	02/20
PHW	02	02/20
PHW	03	02/20

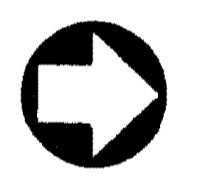


Drawing No.
9 of 13



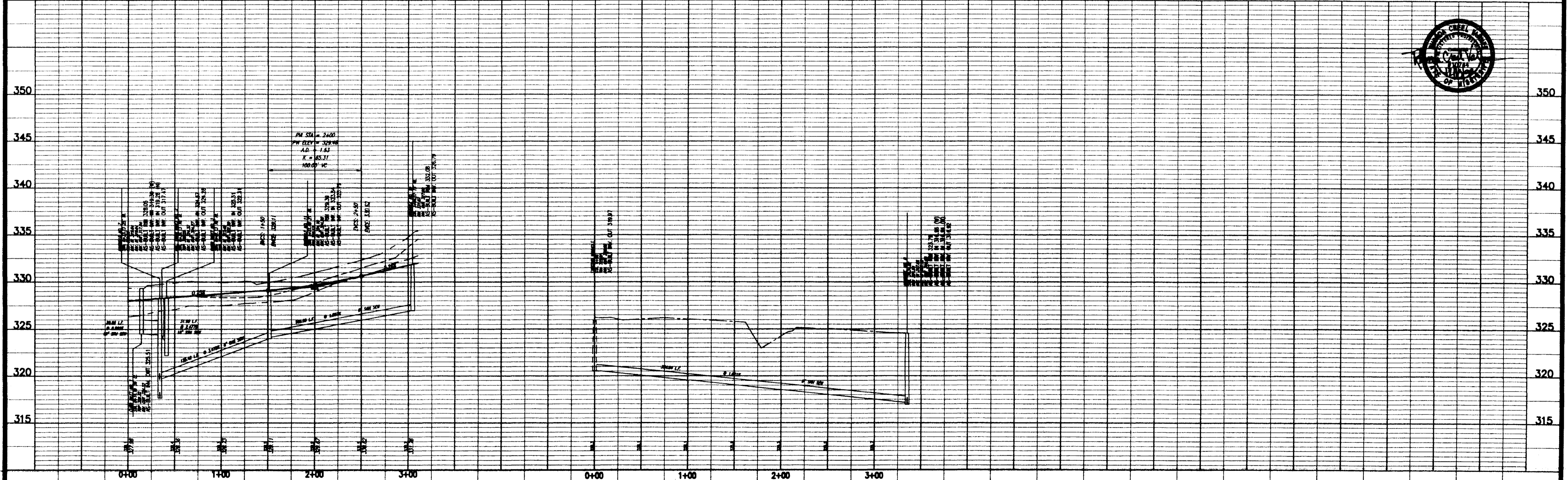
RECORD DRAWING

BY: R. Williams DATE: 11/10/22



SCALE 1"=50' HORIZ.
1"= 5' VERT.

BY	DATE
PHK	11/10/22
PHK	10/12/22

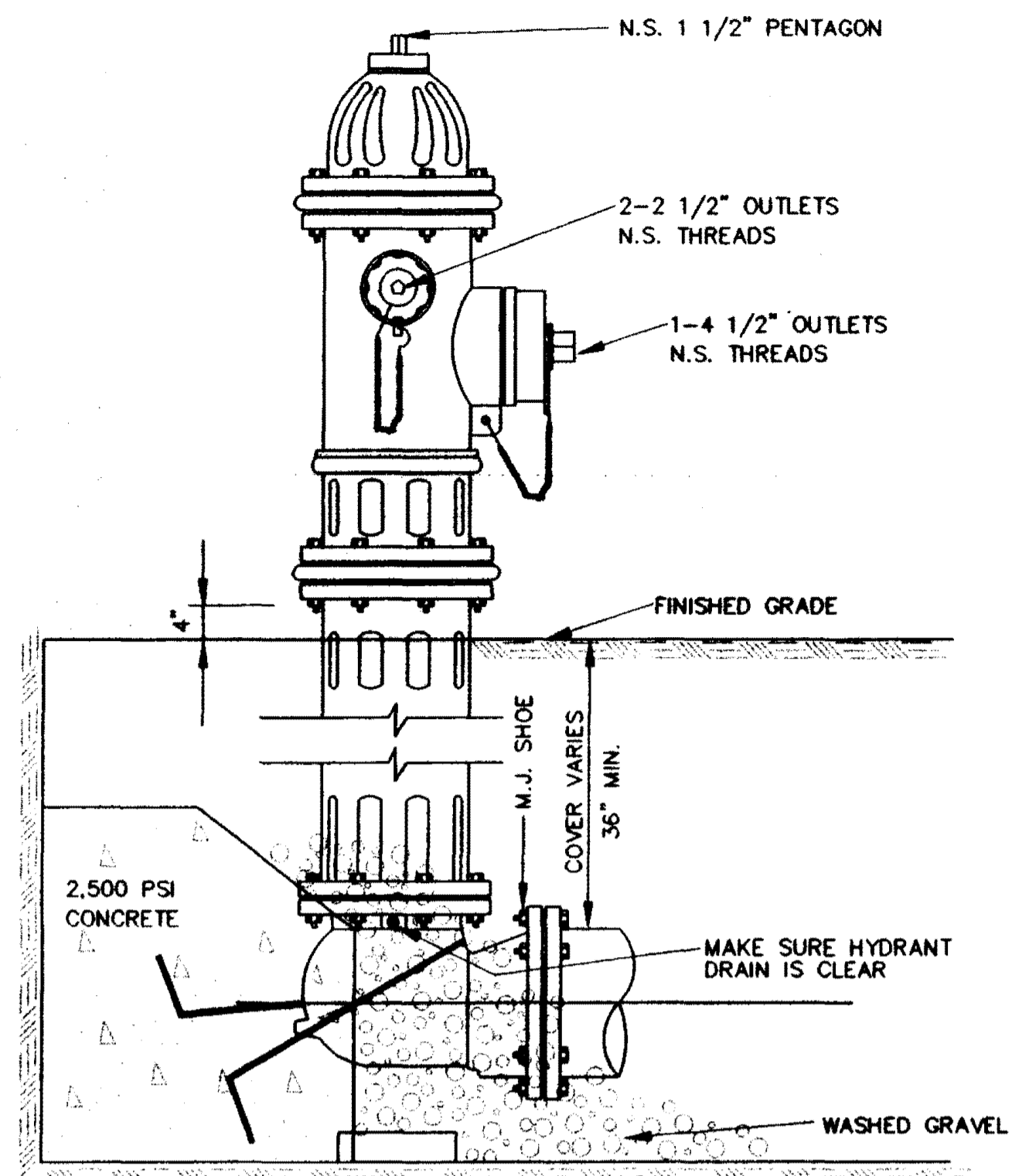


WENDOVER, PART 3A
CITY OF RIDGELAND
MADISON COUNTY, MISSISSIPPI

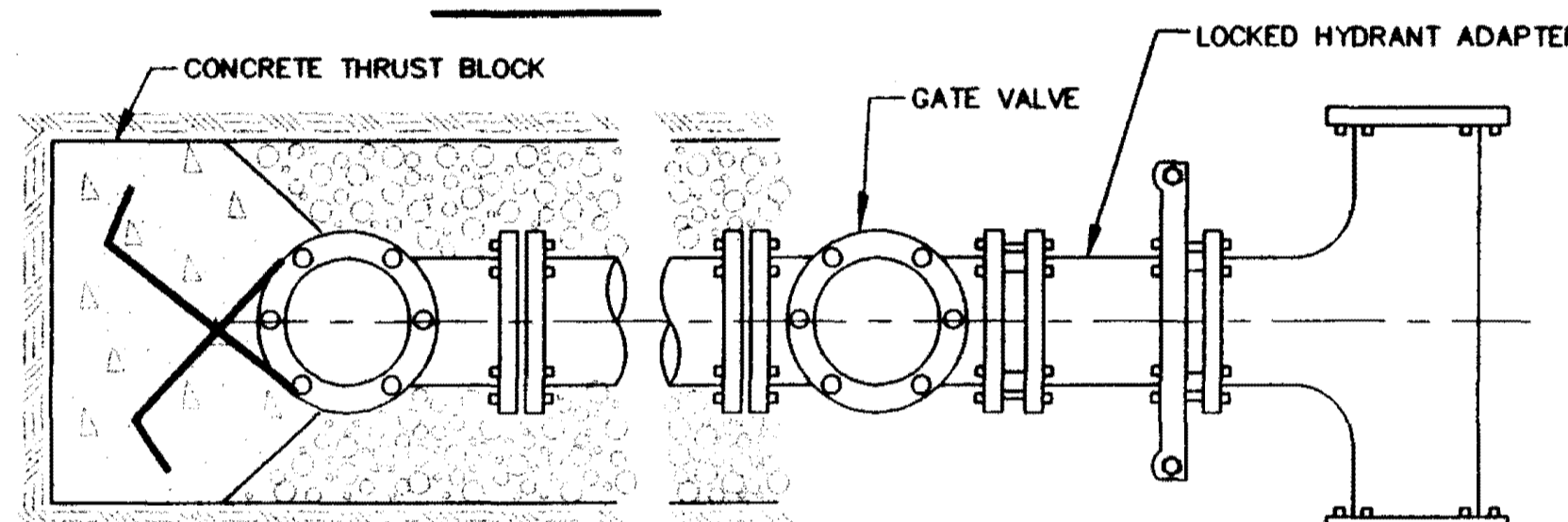
PLAN AND PROFILE - MALLISON PLACE STA. 0+00 - STA. 2+60.47
SANITARY SEWER - LOTS 198-200

Prepared For:
LAKE HARBOUR ROAD, L.P.

Drawn By: RGV	DATE: 01/20		Drawing No. 10 of 13
Checked By: PHK	DATE: 01/20		
Reviewed By: RGV	DATE: 01/20		
Scale: 1"=50' HORIZ.	1"=5' VERT.		



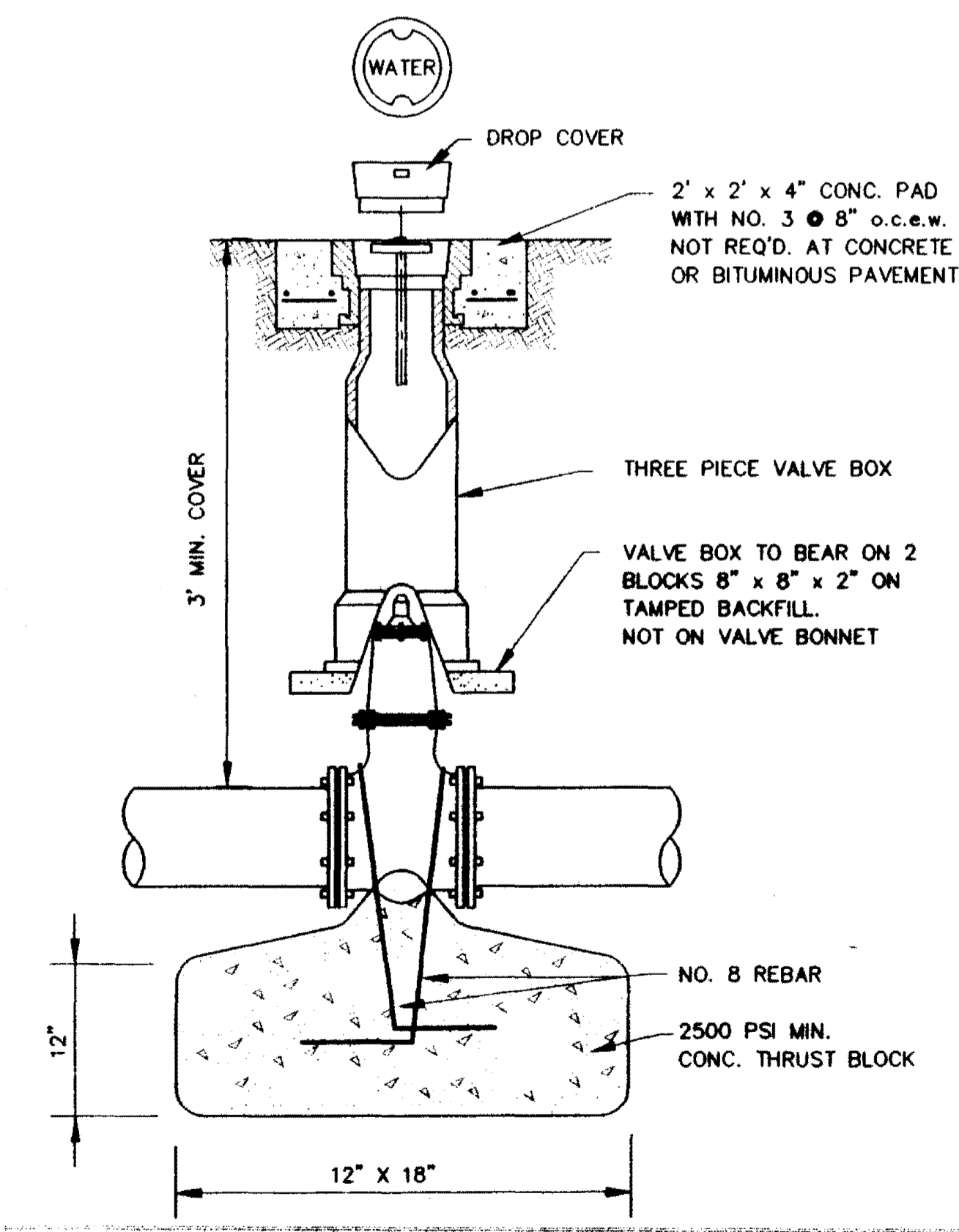
ELEVATION



PLAN

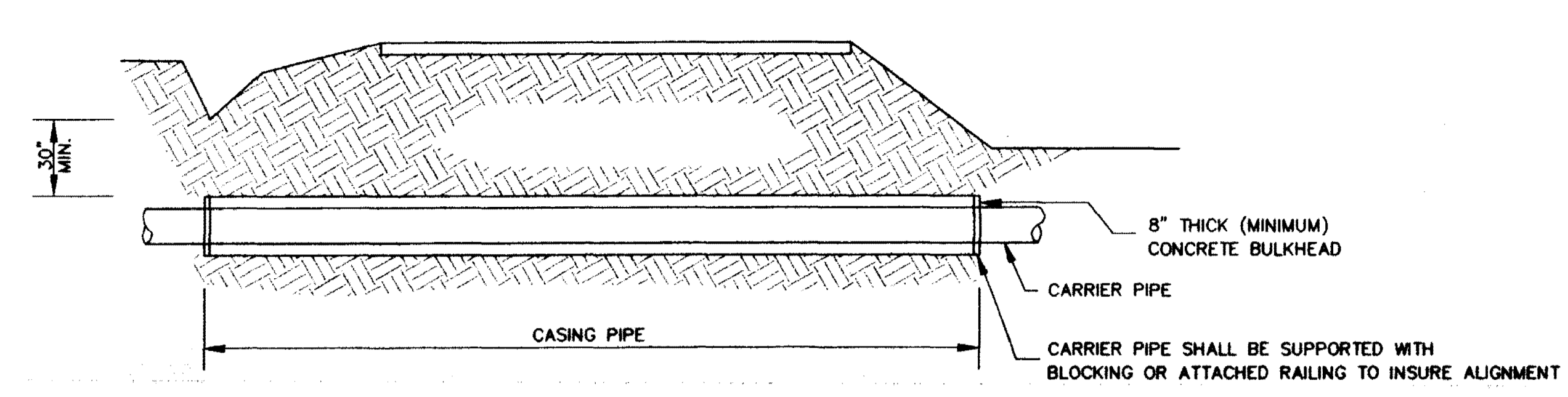
TYPICAL FIRE HYDRANT INSTALLATION

NOTE: GATE VALVES WILL BE REQUIRED ON ALL FIRE HYDRANT LEGS.
N.T.S.



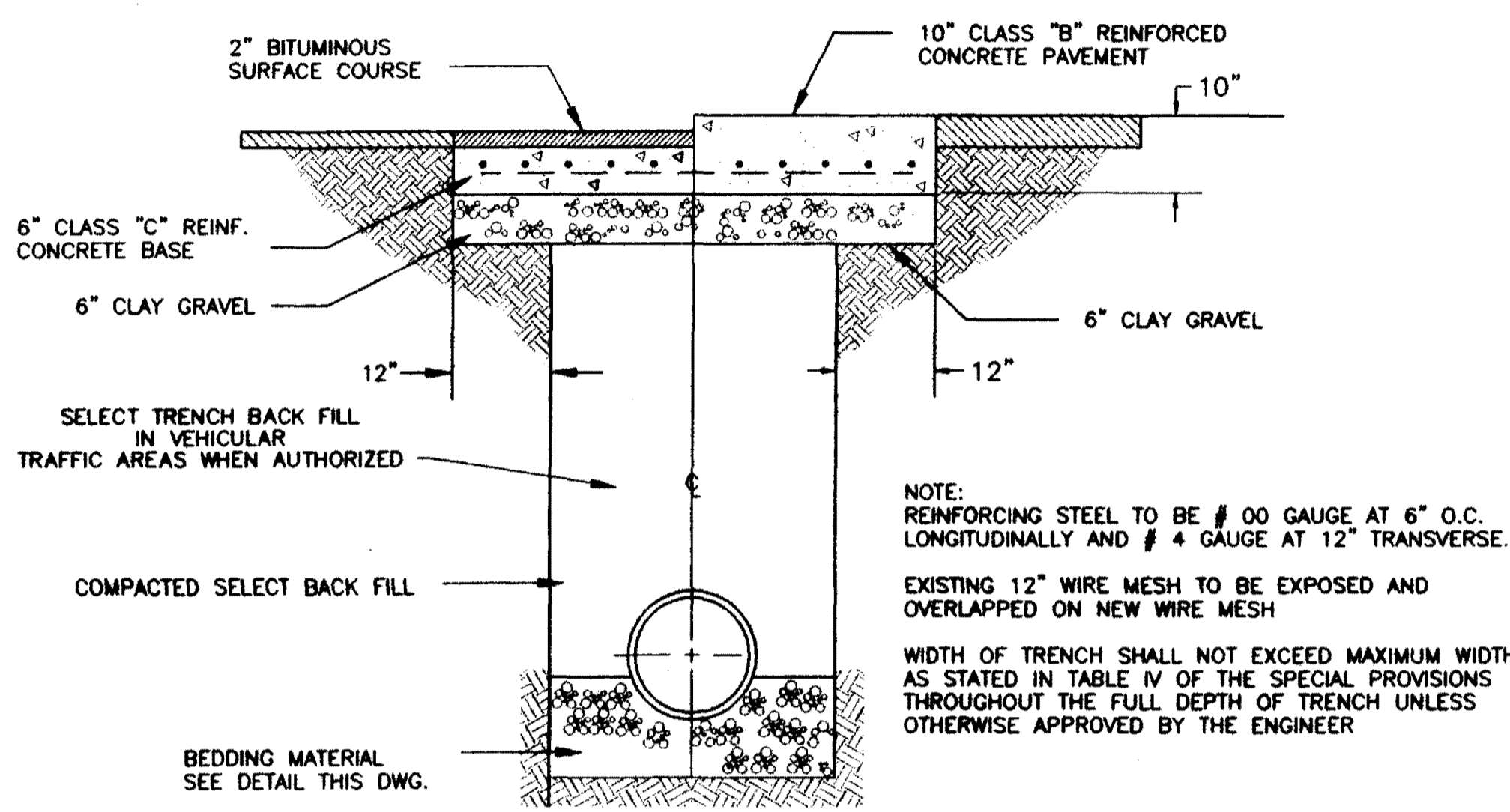
GATE VALVE DETAIL

NOT TO SCALE



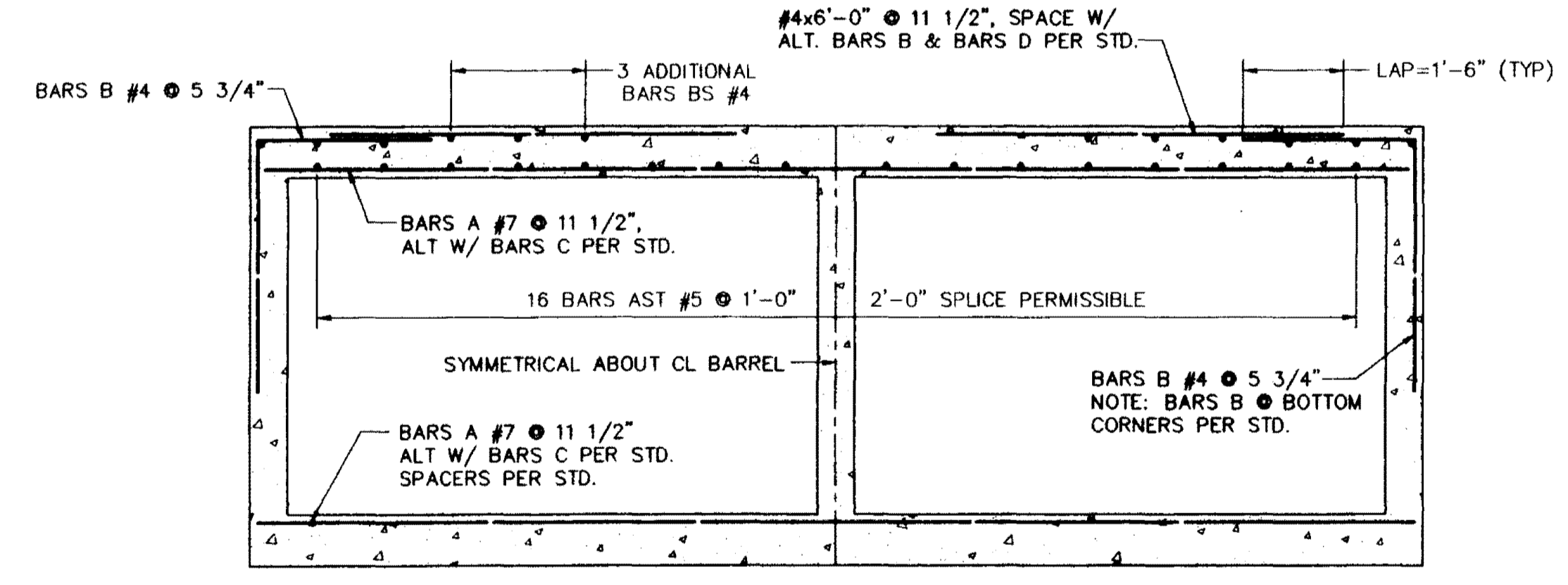
TYPICAL BORE SECTION

NOT TO SCALE



TYPICAL ROADWAY SECTION

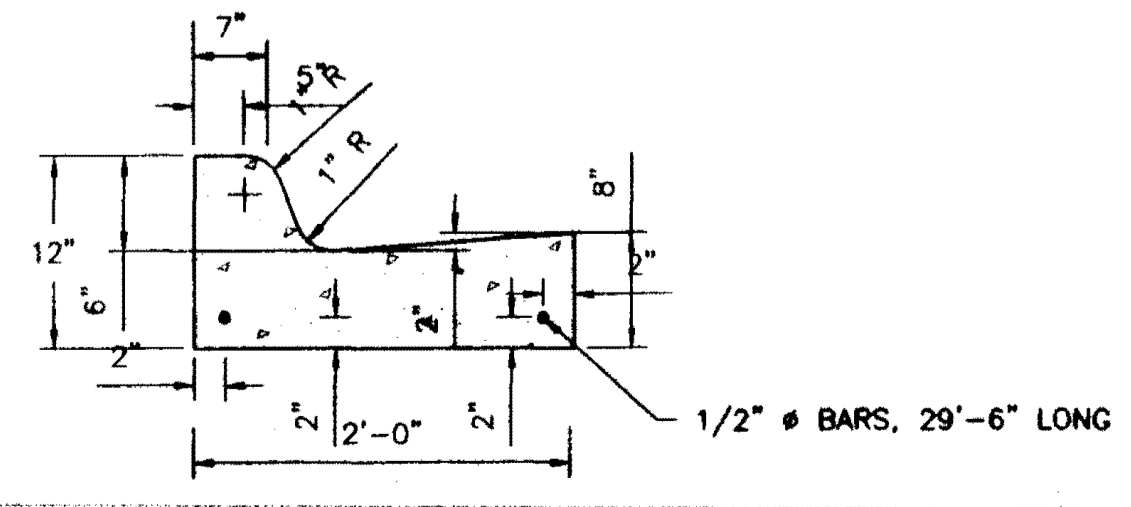
NOT TO SCALE



BARREL CROSS SECTION

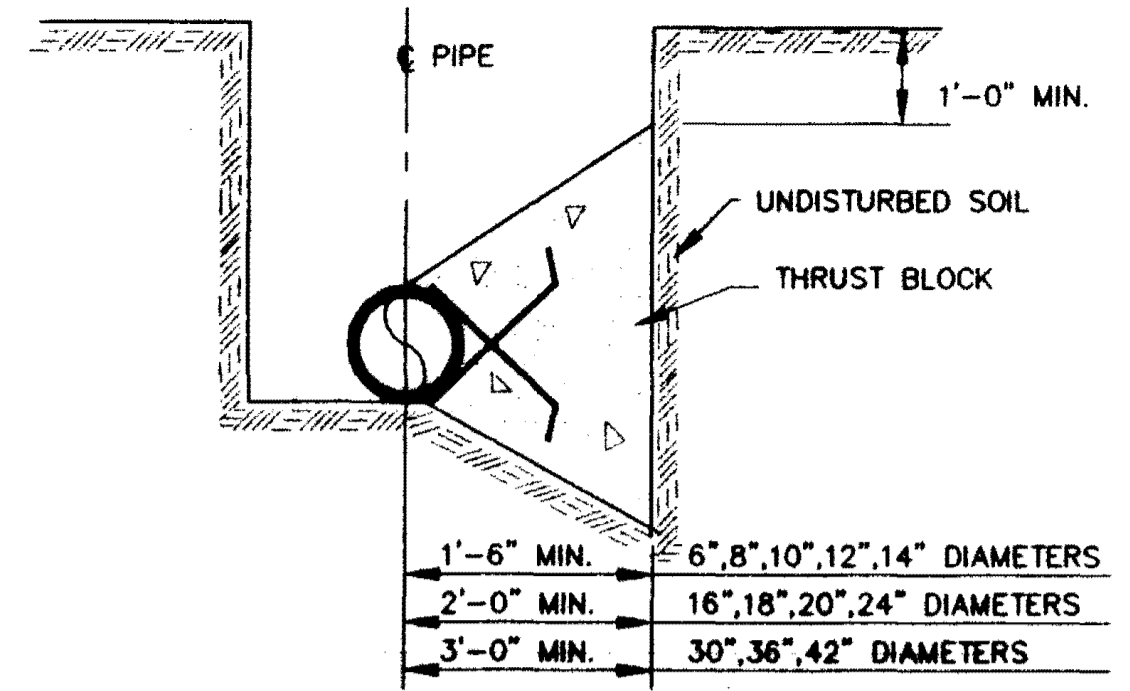
NOT TO SCALE

NOTE: 2 - 3/4" DOWEL BARS, 15" LONG REQ'D. @ EXPANSION JOINTS. THEY SHALL BE HELD IN PLACE BY APPROVED CHAIRS OR SUPPORTS, & 1/2" EXPANSION MATERIALS.

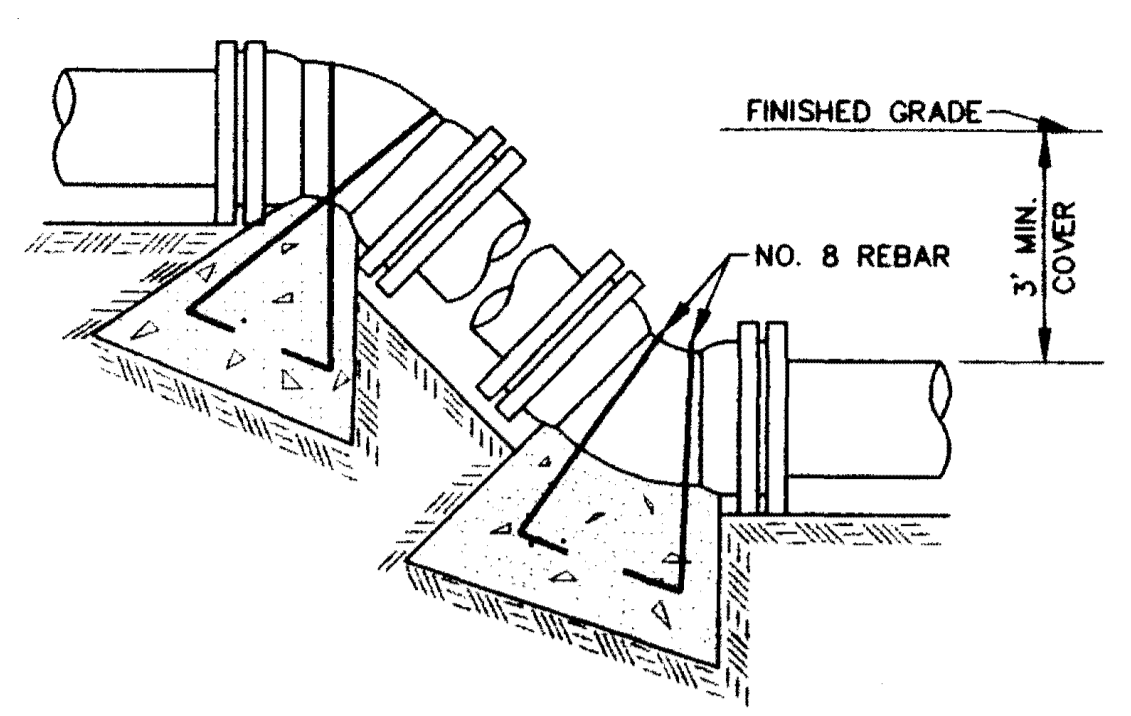


STANDARD CURB AND GUTTER

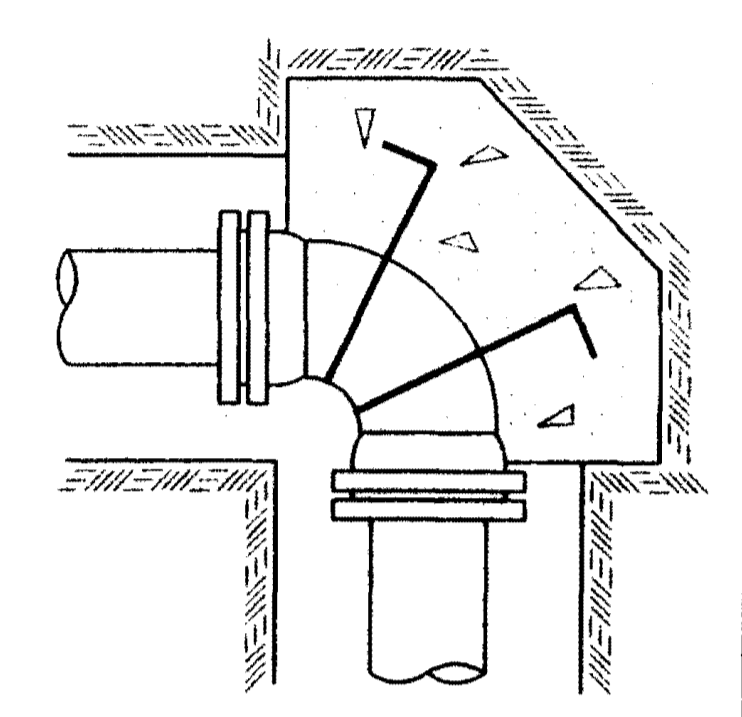
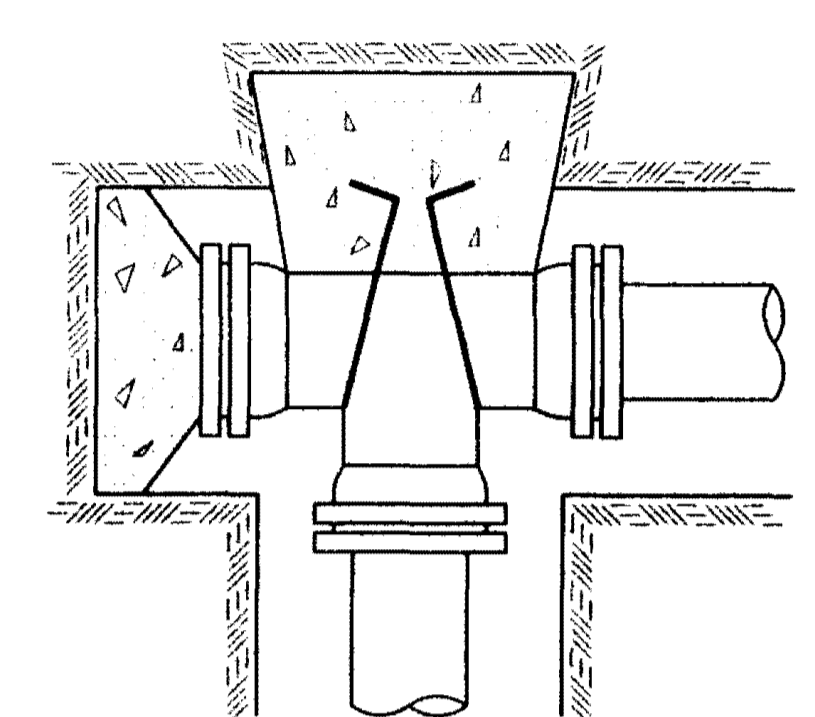
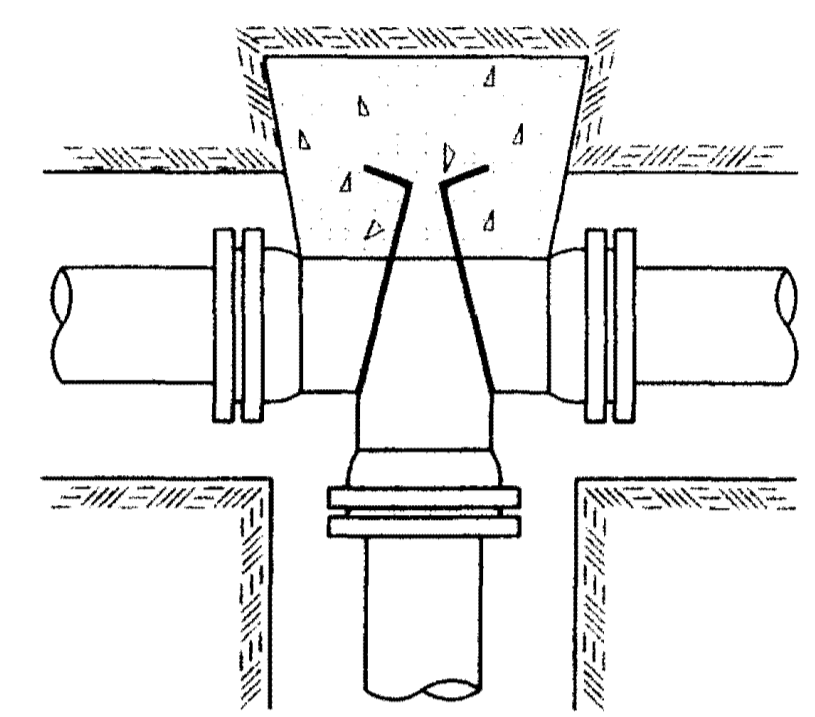
N.T.S.



TYPICAL CROSS SECTION

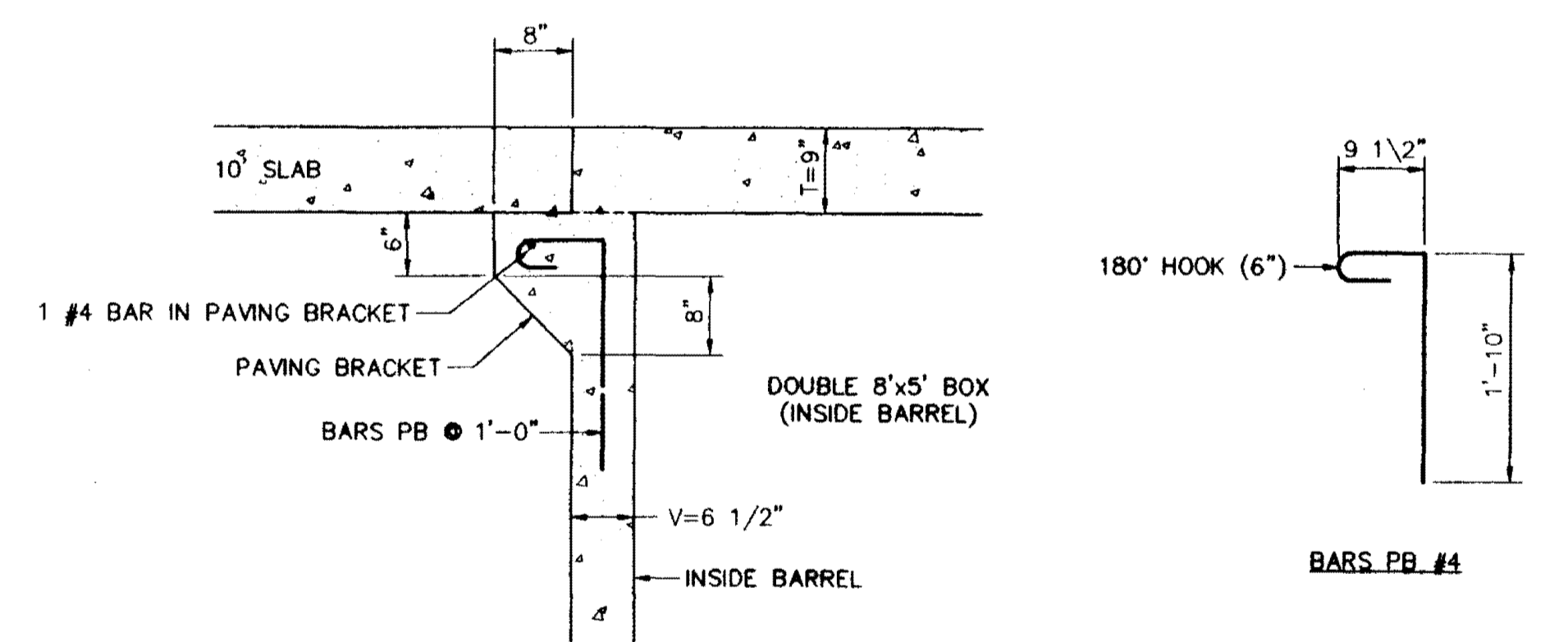


VERTICAL BENDS



TYPICAL THRUST BLOCKING IN WATER MAINS AND SEWAGE FORCE MAINS

NOTE: ALL THRUST BLOCKS 2,500 PSI CONCRETE AGAINST UNDISTURBED EARTH



PAVING BRACKET DETAILS

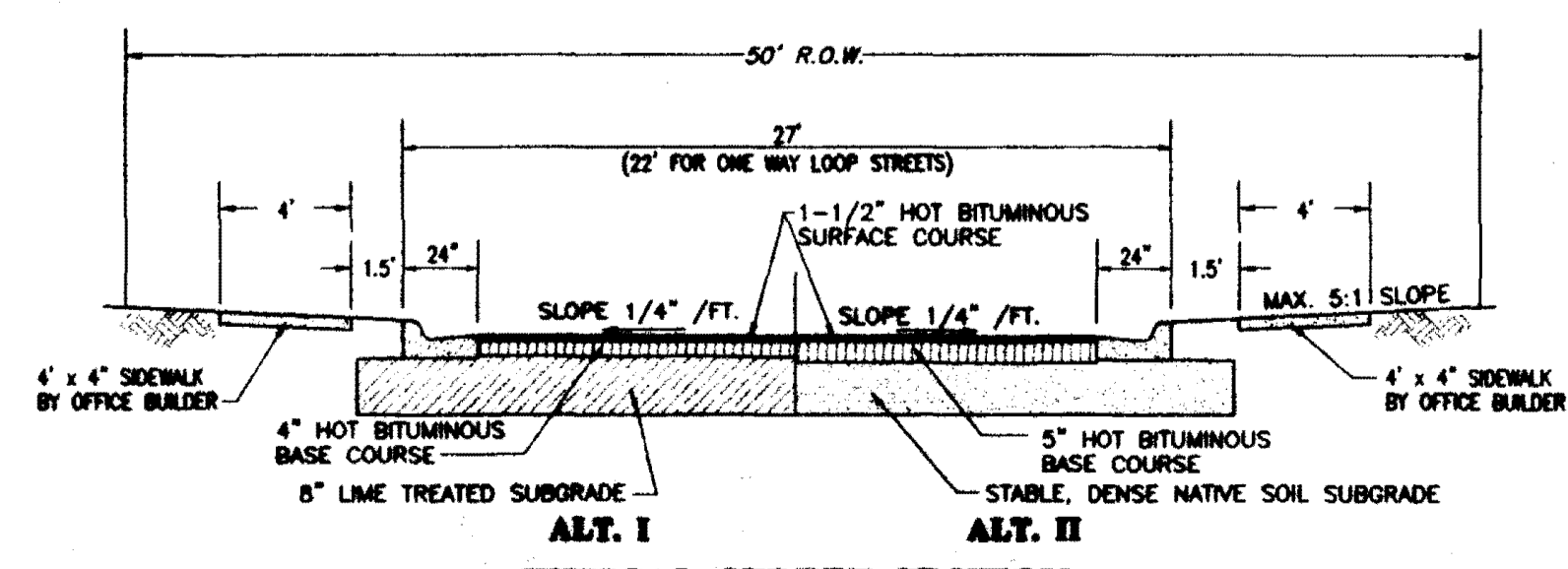
NOT TO SCALE

NOTE: ALL DETAILS NOT SHOWN HEREON ARE THE SAME AS DRAWING BD-5

SPECIFICATIONS-----A.A.S.H.O. 1969
LIVE LOAD-----HS20-44
UNIT STRESSES-----f_s=20,000 PSI f_c=12,000 PSI N=10

BARREL CROSS SECTION

NOT TO SCALE



TYPICAL STREET SECTION

NOT TO SCALE

RECORD DRAWING

BY: *R. Hannon* DATE: 12/10/00



WENDOVER, PART 3A
A DEVELOPMENT OF
LAKE HARBOUR ROAD, L.P.

STANDARD MISCELLANEOUS DETAILS

CITY OF RIDGLAND
MADISON COUNTY, MISSISSIPPI

DESIGN R.C.V.	DATE 03/20	STERLING Consultants INC.	DRAWING NO. 11 of 13
DRAWN P.H.M.	DATE 03/20		
CHECK R.C.V.	DATE 03/20		
SCALE AS SHOWN			

G:\MCD\0513A-004.dwg Mon Jan 11 09:19:02 1999 Paul H. Wilheim - Sterling Consultants, Inc.

