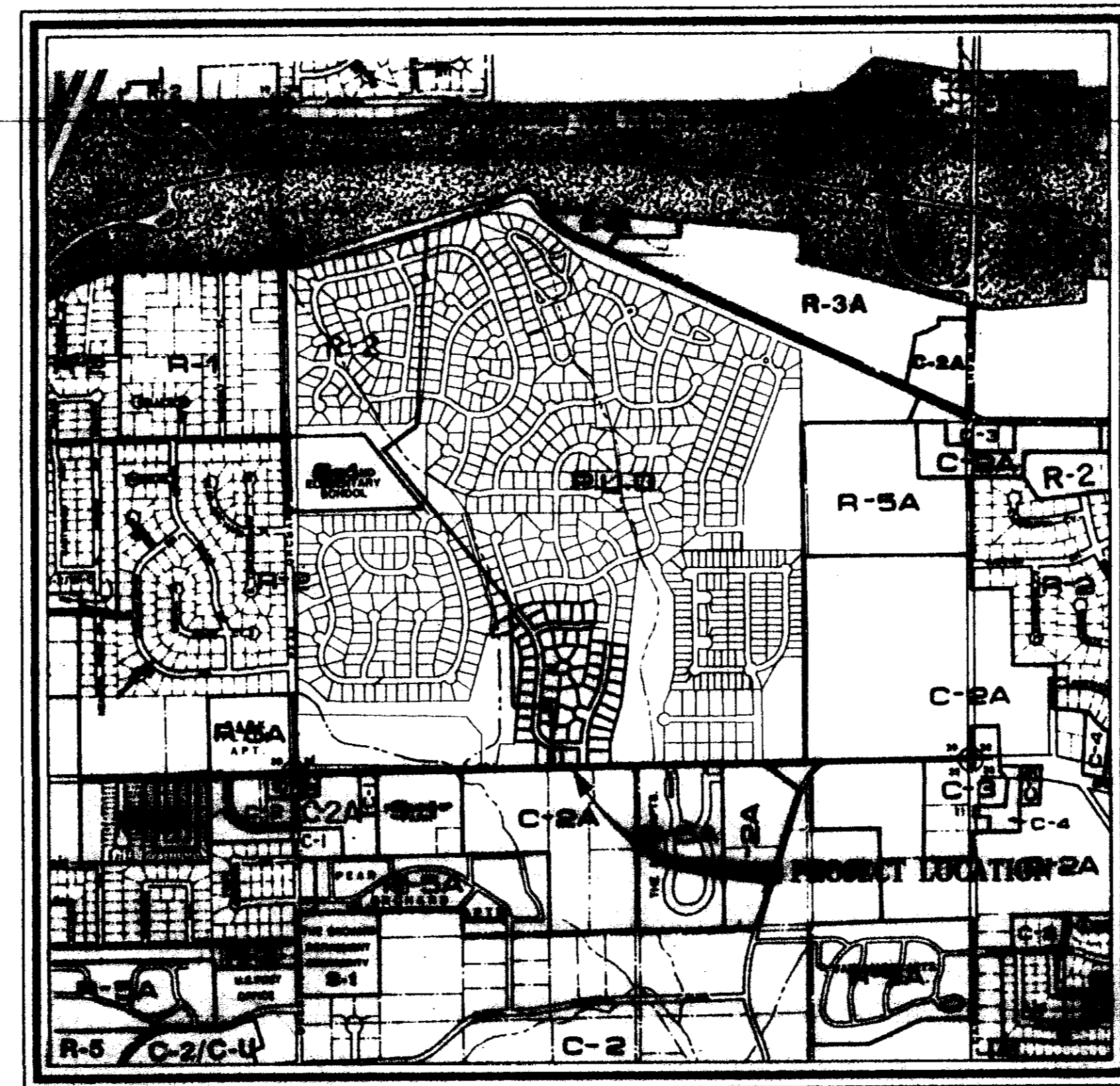
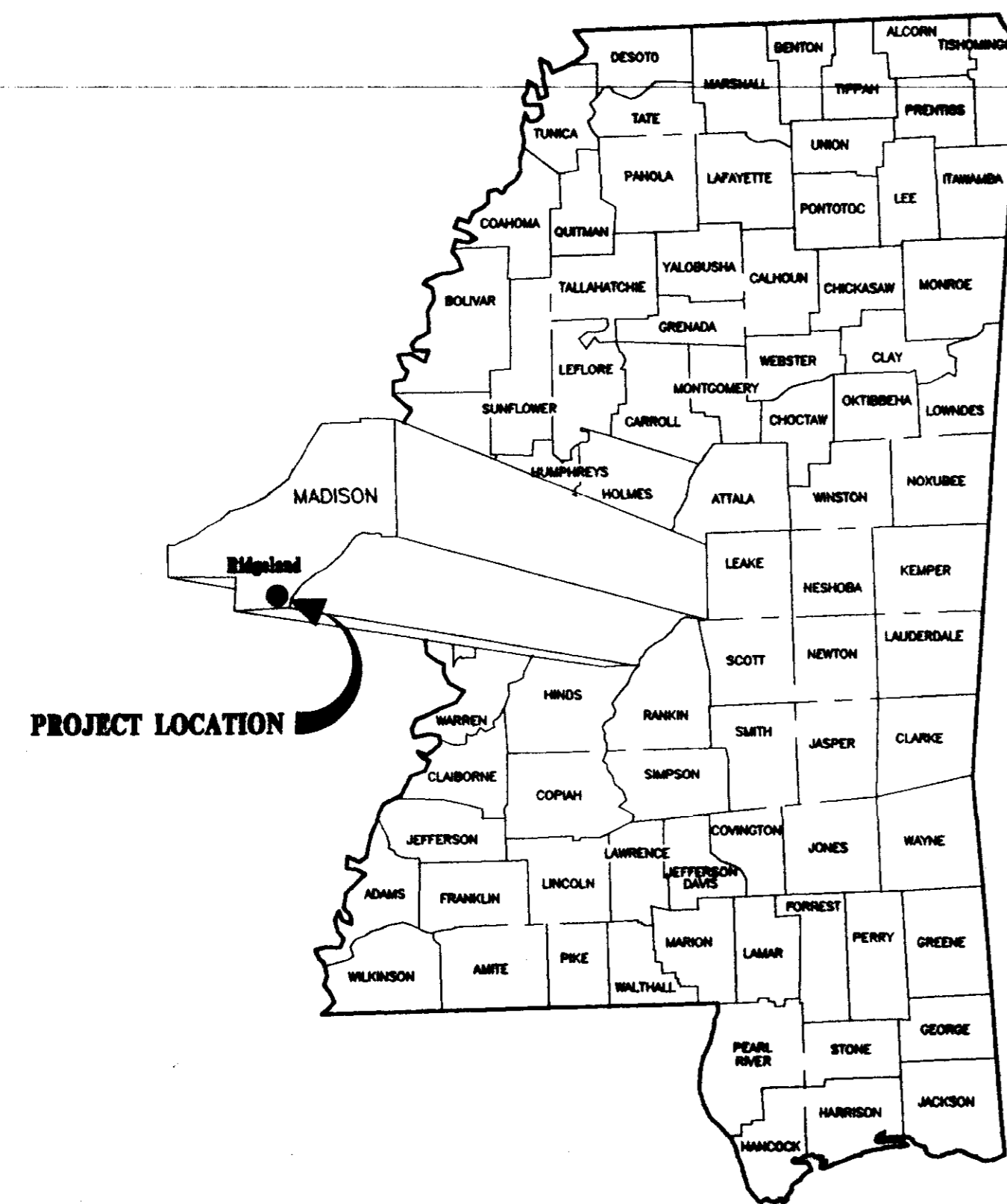


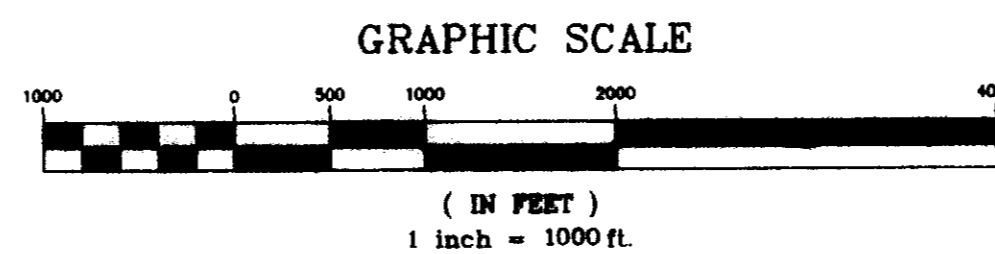
CONSTRUCTION PLANS  
FOR

# WENDOVER, PART 3B

## CITY OF RIDGELAND MADISON COUNTY, MISSISSIPPI



VICINITY MAP



A DEVELOPMENT OF  
LAKE HARBOUR ROAD, L.P.

RECORD DRAWING

BY: *R. L. ...* DATE: *9/9/97*

**PWP 5037**

Prepared By:

**STERLING**  
*Consultants*  
INCORPORATED



**MATERIAL REQUIREMENTS**

**STREETS**

1. CONCRETE FOR CURB AND GUTTER SHALL BE 3,000 PSI MINIMUM.
2. HOT BITUMINOUS PAVEMENT BASE COURSE MIXTURES AND MATERIALS SHALL MEET SPECIFICATION BB-1 OF THE MISSISSIPPI STANDARD SPECIFICATIONS FOR ROAD AND BRIDGE CONSTRUCTION, LATEST EDITION.
3. HOT BITUMINOUS PAVEMENT SURFACE COURSE MIXTURES AND MATERIALS SHALL MEET SPECIFICATION SC-1 OF THE MISSISSIPPI STANDARD SPECIFICATIONS FOR ROAD AND BRIDGE CONSTRUCTION, LATEST EDITION.

**STORM DRAINAGE**

1. PIPE - REINFORCED CONCRETE PIPE, ROUND ASTM C-76 OR ARCH, ASTM C-506.
2. JOINTS - O-RING RUBBER GASKETS, BITUMINOUS PLASTIC CEMENT OR PRE FORMED JOINT COMPOUND.
3. INLETS AND JUNCTION BOXES - PRE CAST CONCRETE, ASTM C-478 OR CONCRETE CAST-IN-PLACE. (CITY OF RIDGELAND STANDARD)
4. INLET CASTINGS - VULCAN RCB-7, C.L. DEWS NO. 2450, OR EQUAL AS APPROVED BY ENGINEER.

**WATER**

- MAIN - C-900 PVC CLASS 150 OR DUCTILE IRON, CEMENT LINED MORTAR PRESSURE CLASS 350 - ANSI/AWWA C151/A21.5.
- ENCASEMENT - POLYETHYLENE FILM ANSI/AWWA A21.5/C105.
- JOINTS - TYLON JOINTS WITH RUBBER GASKET ANSI/AWWA STANDARDS.
- FITTINGS - DUCTILE IRON, COMPACT FITTINGS MECHANICAL JOINT - ANSI/AWWA C153/A21.53-88.
- VALVES - DUCTILE IRON METROSEAL 250 RESILIENT SEATED GATE VALVES - AWWA C509.
- VALVE BOXES - CAST IRON, 3 PIECE ADJUSTABLE STAMPED W/ "WATER".
- SERVICE LINE - 3/4" MINIMUM, TYPE K COPPER, ASTM B88; POLYETHYLENE (PE), AWWA C901; OR POLYBUTYLENE (PB), AWWA C902.
- SVC SADDLE - FORD STYLE 304, OR APPROVED EQUAL.
- CORP. STOPS - MUELLER NO. H-15000 OR APPROVED EQUAL.
- CURB STOPS - MUELLER H-15175 OR APPROVED EQUAL.
- METER BOX - CAST IRON METER BOX W/ FLIP TOP READING COVER.

**SEWER**

- MAIN & SERVICE - PVC, SDR-26, ASTM D-3034 OR DUCTILE IRON, PROTECTO 401 CERAMIC EPOXY LINED.
- JOINTS - SLIP ON W/LOCKED-IN RUBBER GASKET, ASTM F-477.
- MANHOLES - PRE CAST CONCRETE, ASTM C-478. COAL TAR EPOXY COATING. REQUIRED ON INTERIOR AND EXTERIOR OF MANHOLE SECTIONS AND ON MANHOLE STEPS.
- PIPE BOOTS - KOR-N-SEAL MOLDED RUBBER CONNECTORS, OR EQUAL.
- FRAME & COVER - CAST IRON, ASTM A-78 OR EQUAL.
- STEPS - RUBBER COATED

**GENERAL NOTES**

**STREET**

1. STREET SUB GRADE AREAS WHERE EXPANSIVE CLAYS (CH) ARE ENCOUNTERED WITHIN 4' OF FINISHED GRADE SHALL BE UNDERCUT AND BACK FILLED AS REQUIRED TO SEPARATE PAVEMENT FROM EXPANSIVE CLAYS BY A MINIMUM 3-FOOT THICK LAYER OF SELECT SILTY CLAYS (CL) OR SANDY CLAYS (CL) HAVING A LIQUID LIMIT OF LESS THAN 40 AND A PI WITHIN THE RANGE OF 8 TO 20. THE BACK FILL AND FILL MATERIALS SHOULD BE SPREAD IN LOOSE LIFTS HAVING A MAXIMUM THICKNESS OF 9 IN. AND COMPACTED TO NOT LESS THAN 95 PERCENT OF STANDARD PROCTOR MAXIMUM DRY DENSITY (ASTM D 698) AT MOISTURE CONTENTS WITHIN 3 PERCENTAGE POINTS OF THE OPTIMUM MOISTURE CONTENT. STABILITY MUST BE EVIDENT DURING COMPACTION OF EACH LIFT BEFORE ANY SUBSEQUENT LIFTS OF FILL OR BACK FILL MATERIAL ARE ADDED.
2. UNDERCUTTING AND BACK FILLING SHALL EXTEND A MINIMUM OF 2 FEET BEYOND BACK OF CURB.
3. PRIOR TO PLACING ASPHALT BASE MATERIAL, PAVING CONTRACTOR SHALL 1) FINE-GRADE THE SUB GRADE MATERIAL TO THE PROPER SECTION TO PERMIT PLACEMENT OF THE REQUIRED THICKNESS OF BASE COURSE; 2) COMPACT AND PROOF-ROLL SUB GRADE TO ACHIEVE STABILITY; AND ENSURE REQUIRED SUB GRADE DENSITY HAS BEEN ACHIEVED AND VERIFIED BY SOILS TESTING LABORATORY.

**CURB AND GUTTER**

1. CURB AND GUTTER SHALL BE 24" STANDARD (SEE DETAIL).
2. SUB GRADE BENEATH CURB AND GUTTER SHALL BE FINE GRADED AND COMPACTED TO ACHIEVE STABILITY UNDER PRESSURE OF THE REAR WHEEL LOADING OF A MOTOR GRADER MOVING SLOWLY OVER THE CURB AND GUTTER SUB GRADE.
3. AFTER FORMS AND/OR CURB AND GUTTER STRING LINES HAVE BEEN SET AND BEFORE CONCRETE IS POURED, CONTRACTOR SHALL VERIFY THAT ALL GUTTERS DRAIN TO INLETS. MINIMUM SLOPE: 9" PER 100'
4. EXPANSION JOINTS IN CURB AND GUTTER SHALL BE 3/4" JOINT MATERIAL PLACED AT 30' (MAXIMUM) INTERVALS.
5. CONTRACTION JOINTS IN CURB AND GUTTER SHALL BE SCORED AT INTERVALS NOT GREATER THAN 10 FEET AND SPACED EQUALLY BETWEEN EXPANSION JOINTS.
6. CONCRETE FOR CURB AND GUTTER SHALL BE 3,000 PSI MINIMUM.
7. 48" SIDEWALKS SHALL BE CONSTRUCTED BY THE BUILDER ON EACH LOT AFTER ALL UTILITY SERVICES ARE INSTALLED AND THE SITE HAS BEEN GRADED AND SHAPED TO ITS FINISHED TOPOGRAPHY. NOT A PART OF THIS PROJECT.

**STORM DRAINAGE & EROSION CONTROL**

1. ALL STORM DRAINAGE PIPE AND INLETS SHALL BE FLUSHED AND CLEARED OF ANY CONSTRUCTION MATERIALS AND/OR SEDIMENT UPON PROJECT COMPLETION.
2. THE CONSTRUCTION EXIT SHALL BE MAINTAINED SUCH THAT ALL MATERIALS SPILLED, DROPPED, WASHED OR TRACKED FROM VEHICLES OR SITE ONTO ROADWAYS MUST BE REMOVED IMMEDIATELY.
3. INLET SEDIMENT TRAPS SHALL CONSIST OF HAY BALES FULLY SURROUNDING EACH INLET.
4. SEDIMENT BARRIERS SHALL BE HAY BALES PLACED IN ALL DRAINAGE WAYS TO PREVENT SEDIMENT FROM LEAVING CONSTRUCTION SITE.

**WATER & SEWER**

1. ALL WATER AND SANITARY SEWER CONSTRUCTION TO BE IN ACCORDANCE WITH THE CITY OF RIDGELAND STANDARD SPECIFICATIONS.
2. WHERE A SANITARY SEWER MAIN OR SERVICE LINE CROSSES ABOVE A WATER MAIN OR WITHIN 18 INCHES BELOW A WATER MAIN, OR WITHIN 10 FEET ON EITHER SIDE OF A WATER MAIN THE SEWER MAIN OR SERVICE LINE SHALL BE CONSTRUCTED OF DUCTILE IRON.
3. SEWER SERVICE LINES SHALL BE 6"; SEWER MAINS SHALL BE 8" SDR-26 PVC.
4. WATER SERVICE LINES SHALL BE 3/4" POLYBUTYLENE (1" WHERE NOTED ON PLANS); WATER MAINS SHALL BE 8" C-900 PVC CLASS 150
5. SERVICES FOR WATER AND SEWER SHALL BE LOCATED NEAR THE CENTER OF ALL LOTS WITH 10 FOOT SEPARATION.
6. BACK FILL OF ALL TRENCHES UNDER EXISTING OR PROPOSED PAVEMENTS AND CURB AND GUTTER SHALL BE MECHANICALLY COMPACTED IN 9" MAXIMUM LOOSE LIFTS TO A MINIMUM OF 95% STANDARD PROCTOR PEAK DRY DENSITY.
7. DEFLECTION TEST SHALL BE PERFORMED ON ALL FLEXIBLE PIPE. THE TEST SHALL BE CONDUCTED AFTER THE FINAL BACK FILL HAS BEEN IN PLACE AT LEAST 30 DAYS. DEFLECTION TEST SHALL BE RUN USING A RIGID BALL OR MANDREL HAVING A DIAMETER EQUAL TO 95% OF THE INSIDE DIAMETER OF THE PIPE. THE TEST SHALL BE PERFORMED WITHOUT MECHANICAL PULLING DEVICES.
8. WATER MAINS SHALL BE INSTALLED WITH 4' MINIMUM COVER UNDER ROADWAY SECTIONS AND 3' MINIMUM COVER ELSEWHERE.
9. CONTRACTOR SHALL MAINTAIN RECORDS DURING CONSTRUCTION OF HORIZONTAL LOCATION OF ALL WATER AND SEWER SERVICES FOR AS BUILT RECORDS.

**INDEX TO DRAWINGS**

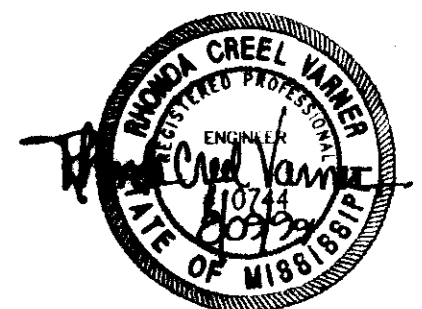
- 1 COVER SHEET
- 2 GENERAL NOTES AND INDEX TO DRAWINGS
- 3 STREET & LOT LAYOUT
- 4 WATER & SEWER LAYOUT
- 5 STORM DRAINAGE LAYOUT
- 6 PLAN AND PROFILE - WENDOVER DRIVE STA. 5+79.83 - 16+08.03
- 7 PLAN AND PROFILE - BRISTOL COURT STA. 0+00 - STA. 2+43.06  
STORM DRAIN LOTS 143/144  
STORM DRAIN LOTS 147/148
- 8 PLAN AND PROFILE - BERRIDGE DRIVE STA. 0+00 - STA. 14+32.38
- 9 PLAN AND PROFILE - JANSON COURT STA. 0+00 - STA. 2+44  
STORM DRAIN LOTS 161/162  
STORM DRAIN LOTS 153/154
- 10 PLAN AND PROFILE - ABBOTS LANE STA. 0+00 - STA. 4+82.58  
STORM DRAIN LOTS 164/165
- 11 STANDARD MISCELLANEOUS DETAILS
- 12 STANDARD SEWER DETAILS

**LEGEND**

- — — — — PROPERTY LINE
- — — — — LOT LINE
- — — — — RIGHT OF WAY LINE
- — — — — EASEMENT
- — — — — SETBACK LINE
- — — — — CENTER LINE
- — — — — EDGE OF PAVEMENT
- — — — — BACK OF CURB
- - - - - EXISTING CONTOUR (1' INTERVAL - NVGD DATUM)
- ● — — — — PROPOSED SANITARY SEWER & MANHOLE
- □ — — — — PROPOSED STORM SEWER & CATCH BASIN
- SS — — — — SANITARY SEWER
- W — — — — WATER LINE
- ⊕ — — — — PROPOSED WATER VALVE
- ⊗ — — — — PROPOSED FIRE HYDRANT
- ⊕ — — — — PROPOSED TEE

**RECORD DRAWING**

BY: *R. Korman* DATE: 8/09/99

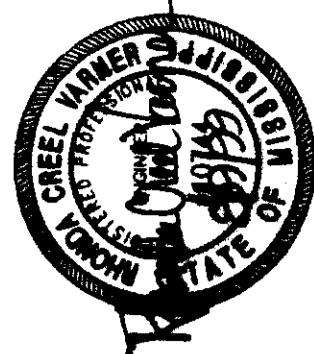


**WENDOVER, PART 3B  
A DEVELOPMENT OF  
LAKE HARBOUR ROAD, L.P.**

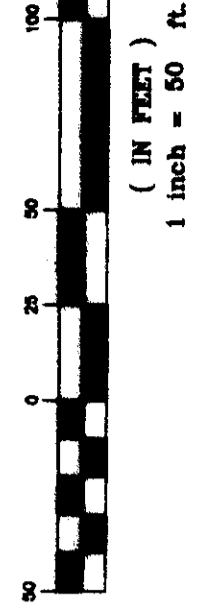
**GENERAL NOTES  
AND INDEX TO DRAWINGS**

**CITY OF RIDGELAND  
MADISON COUNTY, MISSISSIPPI**

DATE: 8/09/99	SCALE: AS SHOWN	DRAWING NO. 2 OF 12
BY: RGV	CHECK: RGV	
DATE: 8/09/99	DATE: 8/09/99	
BY: PHW	DATE: 8/09/99	
CHECK: PHW	DATE: 8/09/99	
BY: RGV	DATE: 8/09/99	
CHECK: RGV	DATE: 8/09/99	



GRAPHIC SCALE



REDEVELOPMENT PART 3B  
A DEVELOPMENT OF  
SEAWOOD PARTNERS

STREETS AND LOT  
LAYOUT

CITY OF RIDGELAND  
MADISON COUNTY, MISSISSIPPI

STERLING ENGINEERING  
DRAWING NO. 3 OF 12

RECORD DRAWING

DATE: 02/19/99

CURVE	ANGLE	CHORD	AREA	PERIMETER
1	112.94°	172.47'	10,843 S.F.	270.00'
2	127.47°	208.54'	15,912 S.F.	315.00'
3	152.92°	270.00'	24,000 S.F.	420.00'
4	172.47°	342.00'	32,400 S.F.	525.00'
5	187.92°	420.00'	42,000 S.F.	630.00'
6	197.47°	504.00'	52,800 S.F.	735.00'
7	202.92°	594.00'	64,800 S.F.	840.00'
8	204.47°	690.00'	78,000 S.F.	945.00'
9	202.92°	792.00'	92,400 S.F.	1,050.00'

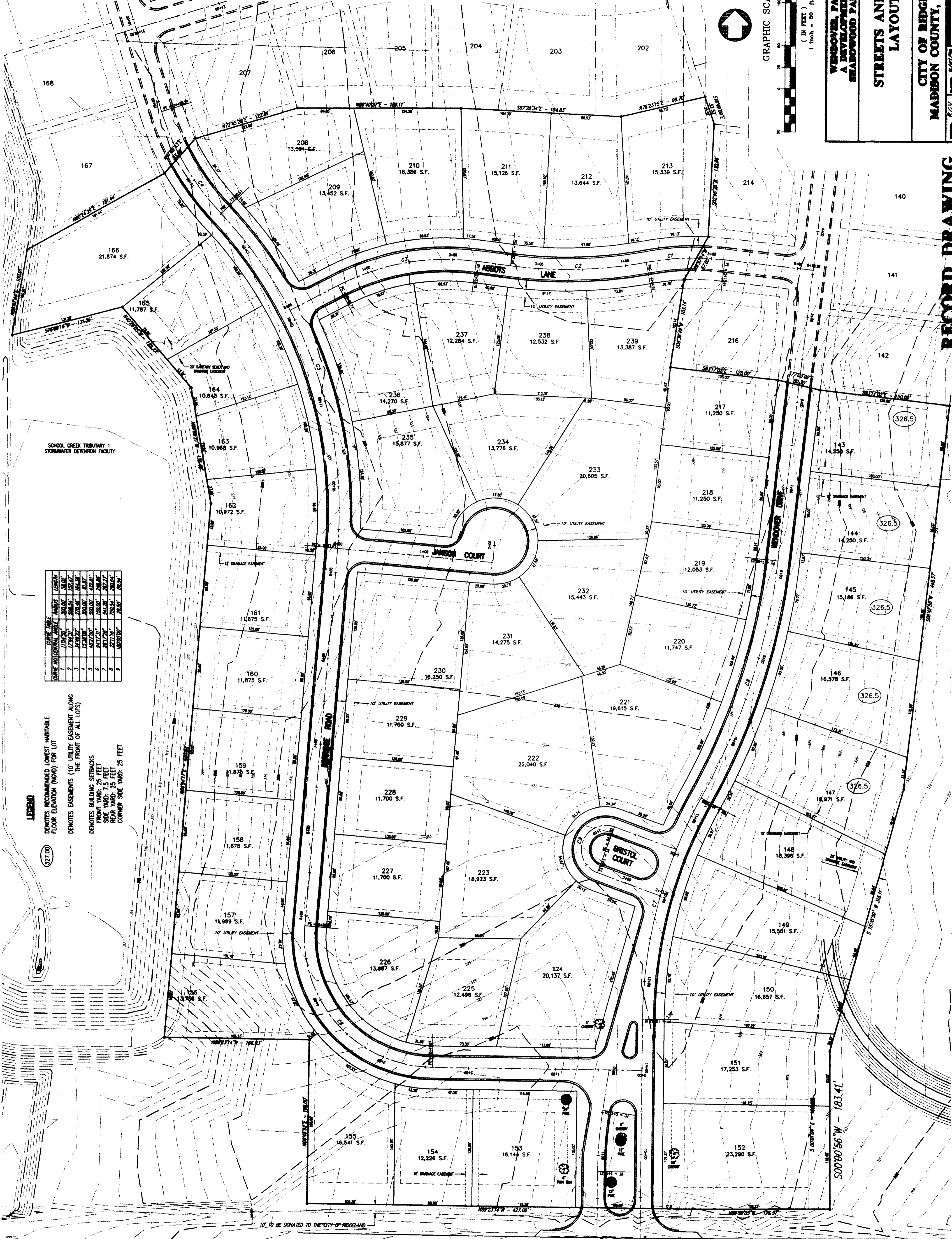
**LEGEND**

(327.00) DENOTES RECOMMENDED LOWEST HABITABLE FLOOR ELEVATION (MGD), FOR LOT

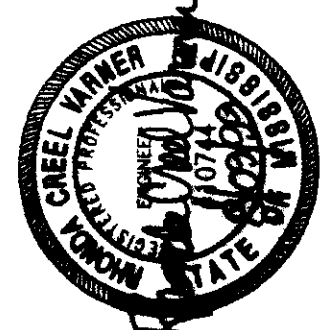
DENOTES EASEMENTS (10' UTILITY EASEMENT ALONG THE FRONT OF ALL LOTS)

DENOTES BUILDING SETBACKS

FRONT YARD: 5 FEET  
SIDE YARD: 5 FEET  
REAR YARD: 25 FEET  
CORNER SIDE YARD: 25 FEET



DATE: 02/19/99



GRAPHIC SCALE  
(IN FEET)  
1 inch = 50 ft.

WINDOVER, PART 3B  
A DEVELOPMENT OF  
SHADOWOOD PARTNERS

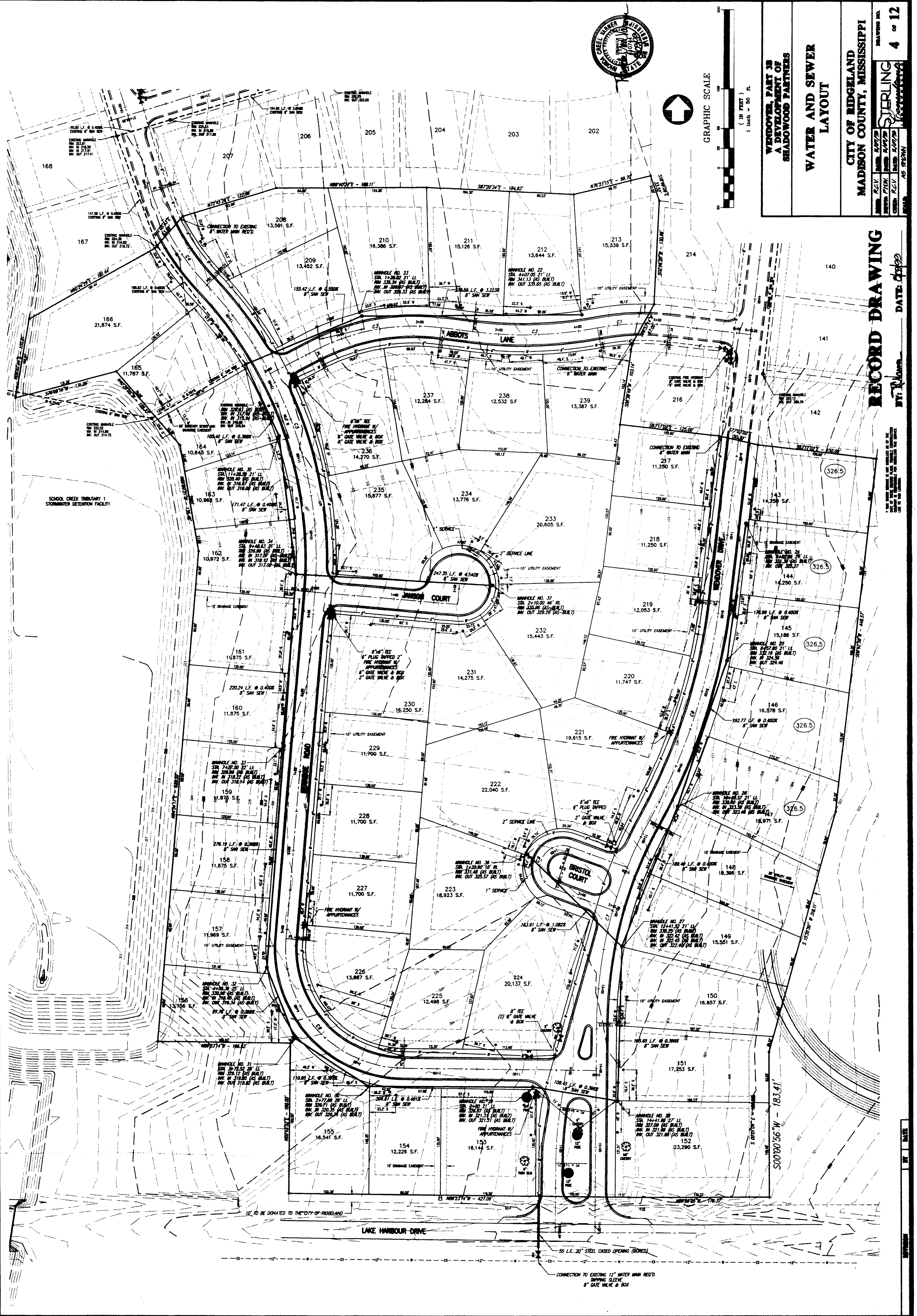
WATER AND SEWER  
LAYOUT

CITY OF RIDGELAND  
MADISON COUNTY, MISSISSIPPI

DRAWING NO. 1999-001  
DATE: 05/13/99  
BY: JMB  
CHECKED: JMB  
DATE: 05/13/99  
SCALE: AS SHOWN

RECORD DRAWING

DATE: 05/13/99





GRAPHIC SCALE

(IN FEET)  
1 inch = 50 ft.

WENDOVER, PART 3B  
A DEVELOPMENT OF  
SEAWOOD PARTNERS

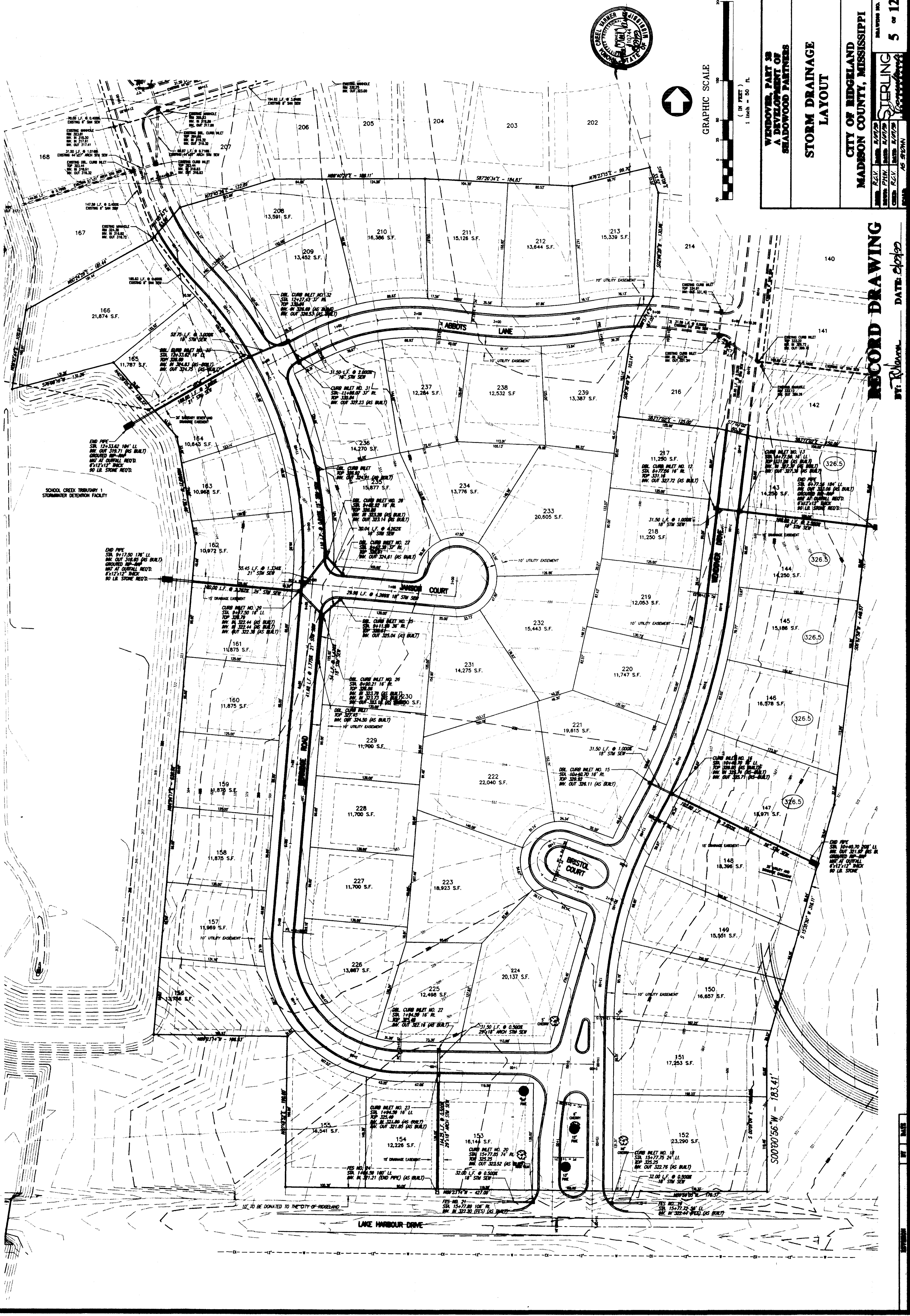
STORM DRAINAGE  
LAYOUT

CITY OF RIDGELAND  
MADISON COUNTY, MISSISSIPPI

DATE: 08/19/99  
BY: RB  
DRAWING NO. 5 OF 12

RECORD DRAWING

DATE: 08/19/99



TO BE DONATED TO THE CITY OF RIDGELAND

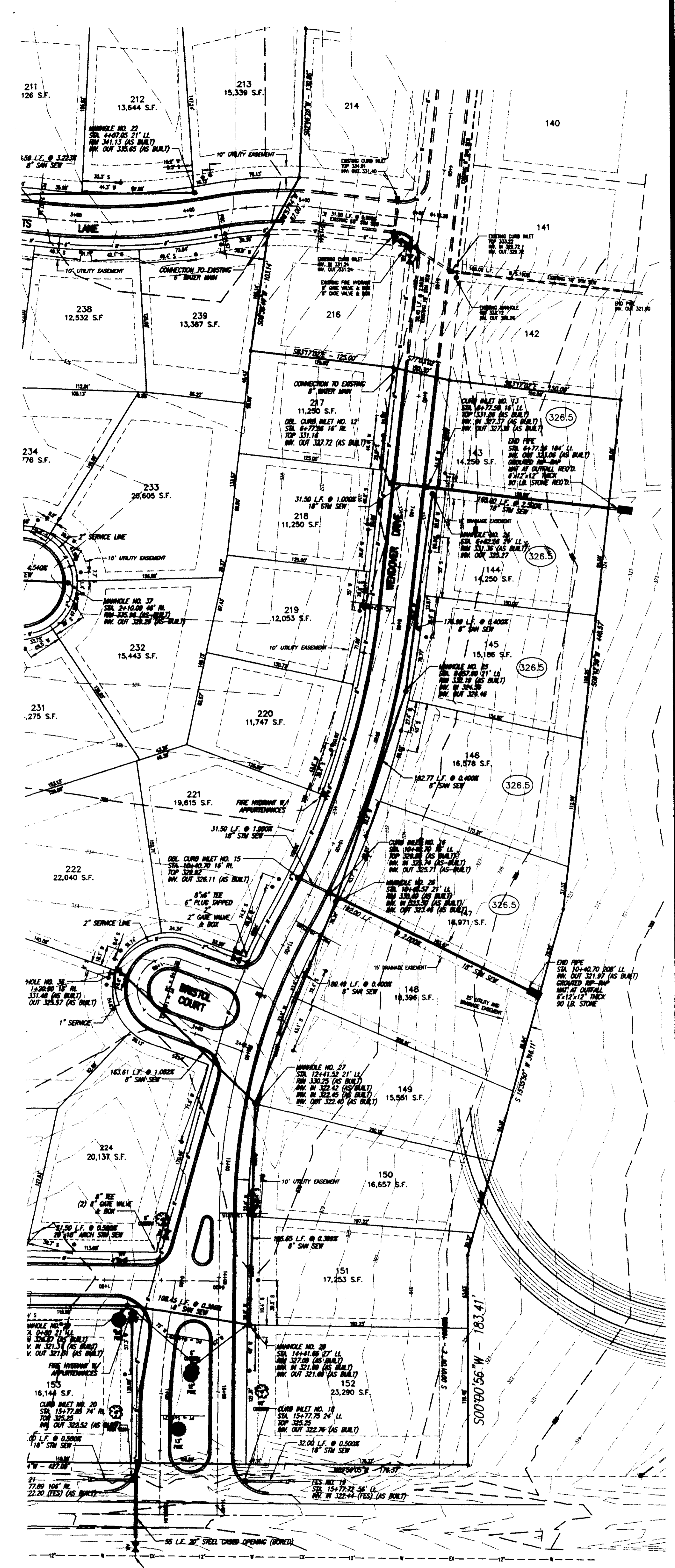
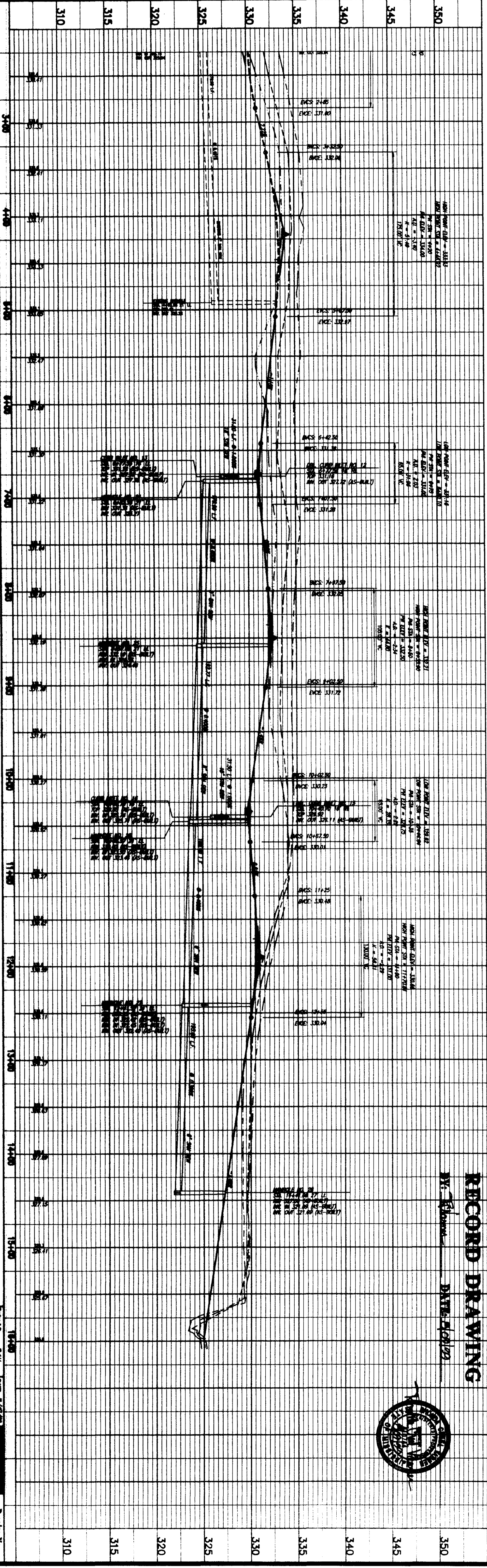
WENOVER, PART 38  
CITY OF RIDGELAND  
MADISON COUNTY, MISSISSIPPI

PLAN AND PROFILE  
WENOVER DRIVE STA. 5+79.85 - STA. 16+00.00

Prepared For  
RAINDOW PARTNERS

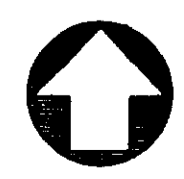
DATE: 8/1/99  
DRAWN BY: GIBBY  
CHECKED BY: GIBBY  
SCALE: AS SHOWN

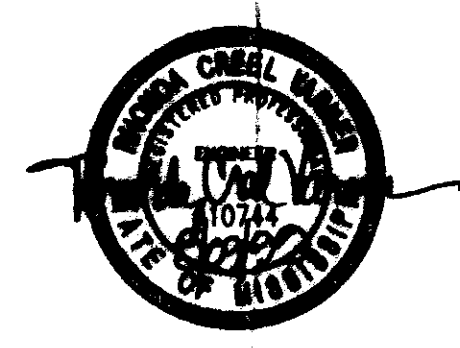
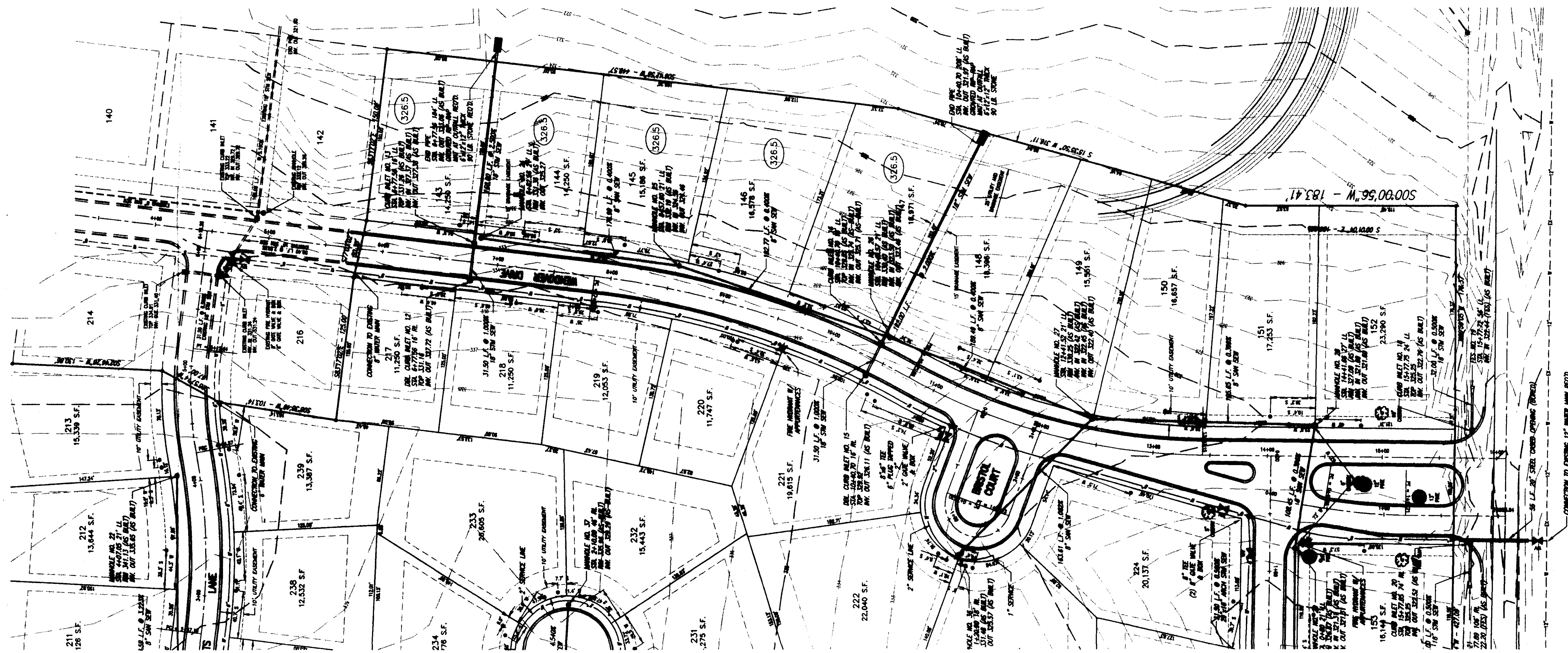
Drawing No.  
6 of 12



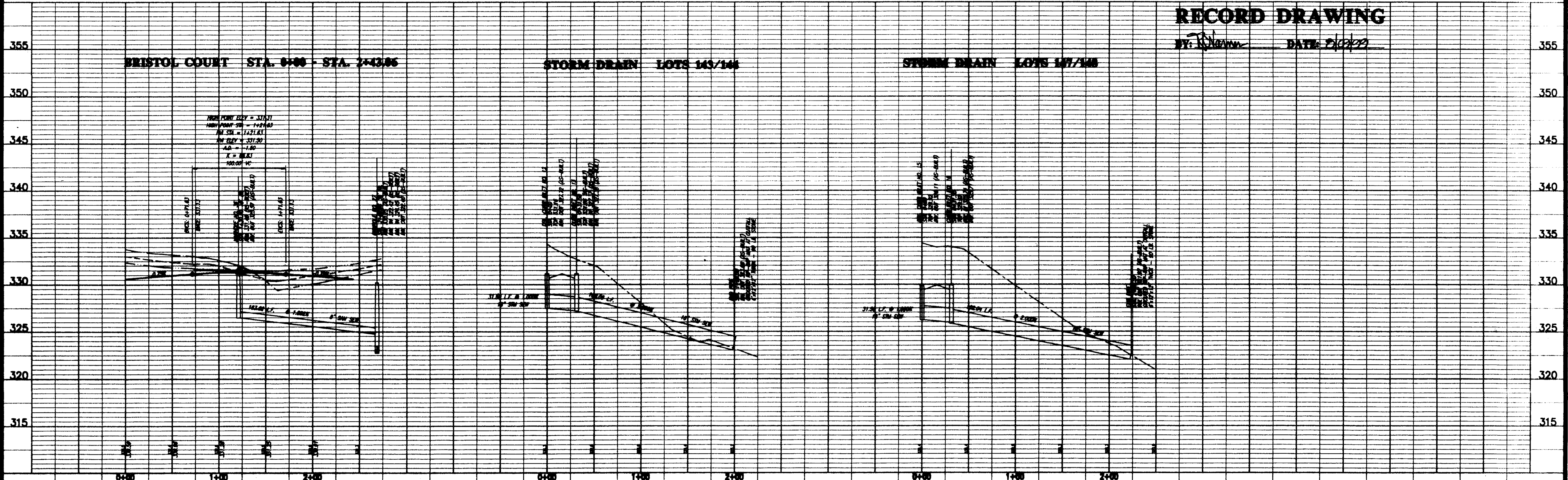
RECORD DRAWING

SCALE 1"=50' HORIZ.  
1"=5' VERT.





SCALE 1"=50' HORIZ.  
1"= 5' VERT.



**RECORD DRAWING**

BY: *[Signature]* DATE: 7/10/99

WENDOVER, PART 3B  
CITY OF RIDGELAND  
MADISON COUNTY, MISSISSIPPI

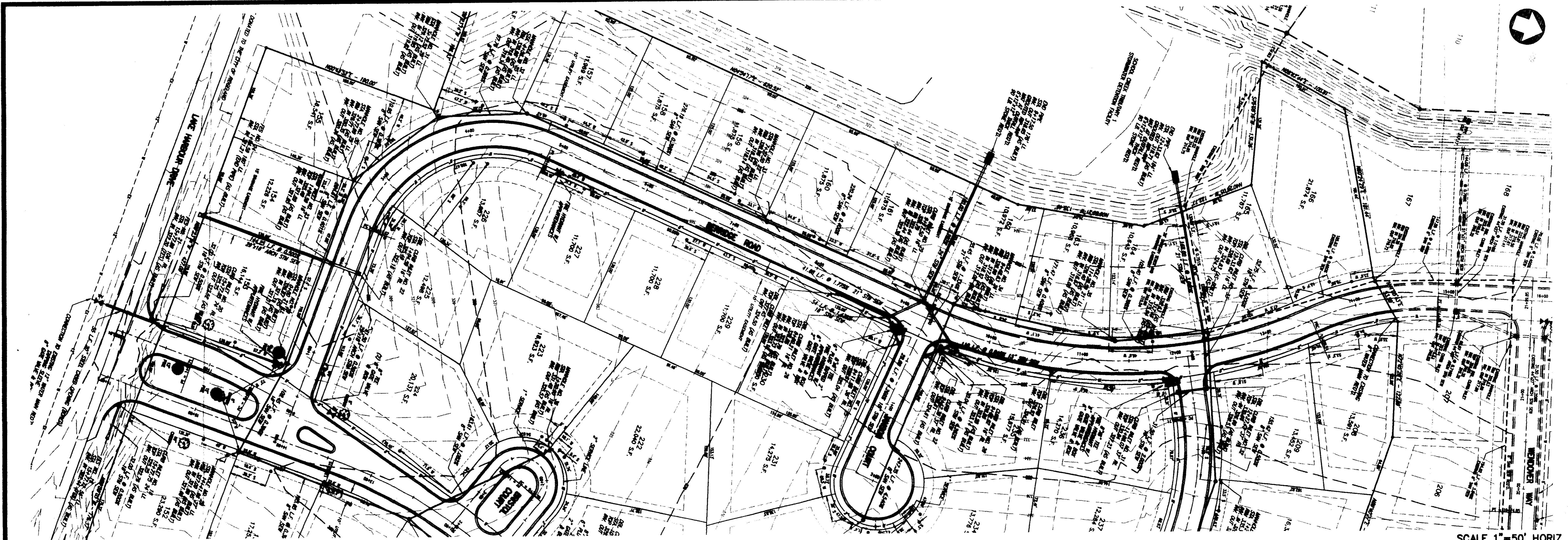
**PLAN AND PROFILE**  
BRISTOL COURT STA. 0+00 - STA. 2+43.06  
STORM DRAIN LOTS 143/144 & LOTS 147/148

Prepared For  
SHADOWOOD PARTNERS

Checked By	REV	DATE
Checked By	REV	DATE
Checked By	REV	DATE
Checked By	REV	DATE

STIRLING  
ENGINEERS & ARCHITECTS

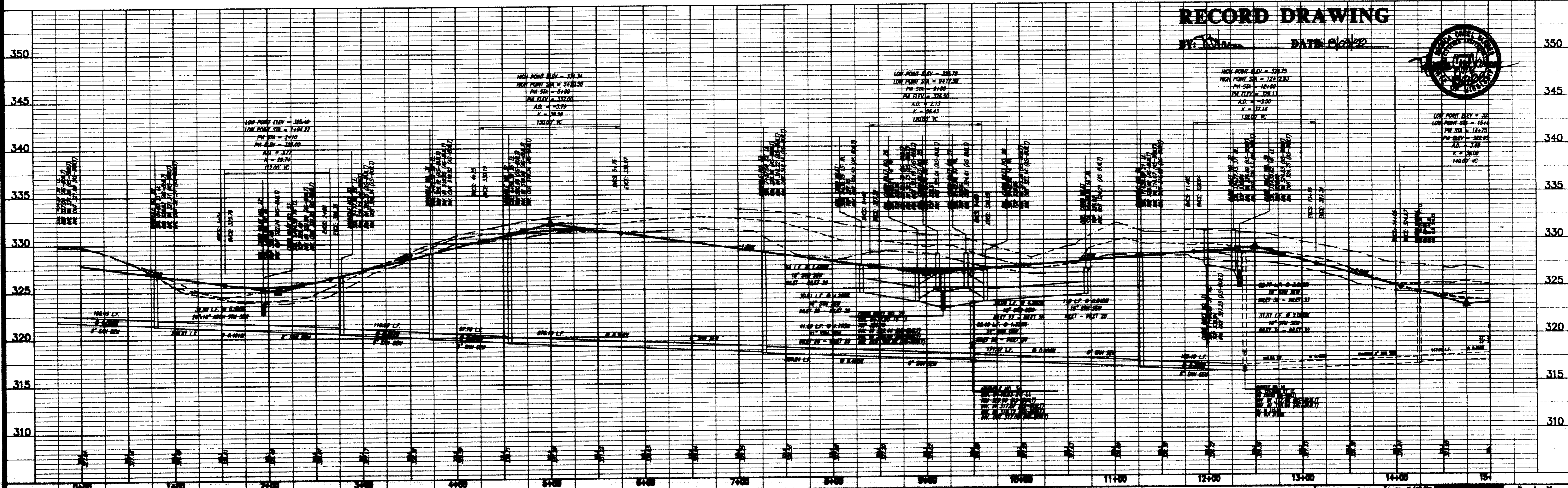
Drawing No.  
7 - 12



SCALE 1" = 50' HORIZ.  
1" = 5' VERT.

**RECORD DRAWING**

BY: *[Signature]* DATE: 11/20/22



WENDOVER, PART 3B  
CITY OF RIDGELAND  
MADISON COUNTY, MISSISSIPPI

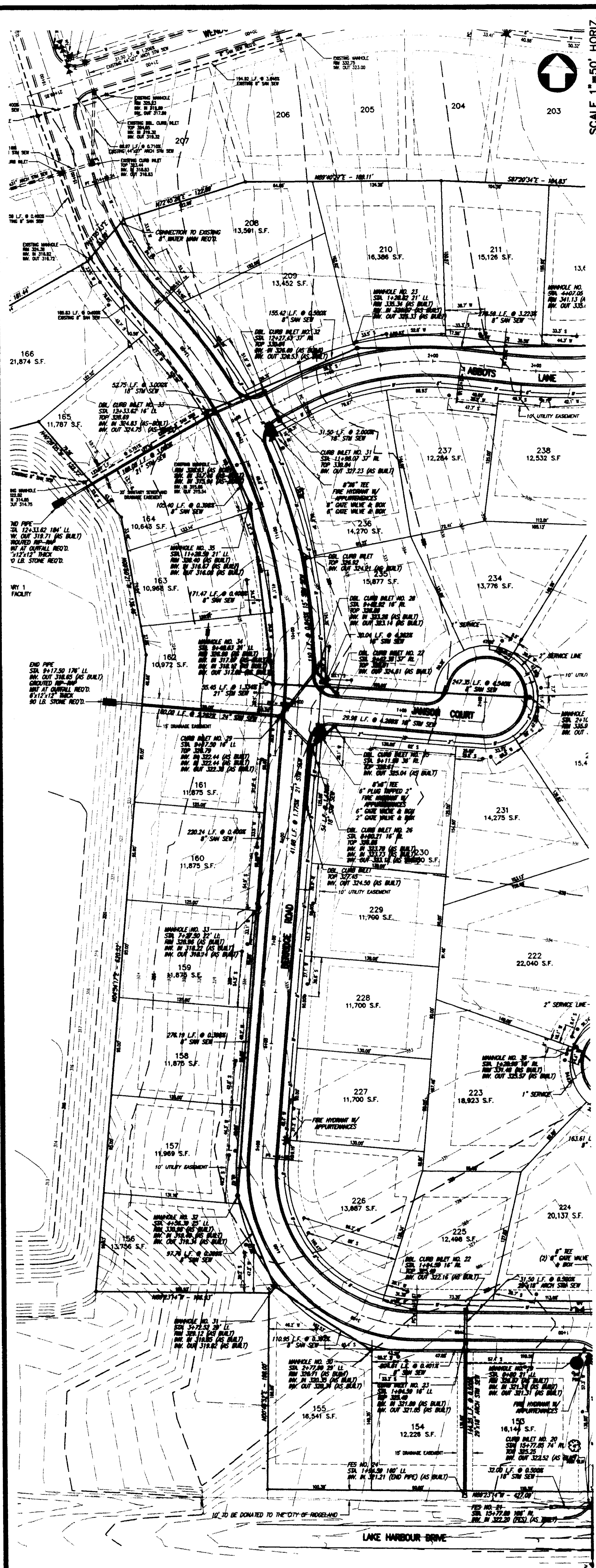
**PLAN AND PROFILE**  
**BERRIDGE DRIVE STA. 0+00 - STA. 14+32.38**

Prepared For  
**SHADOWOOD PARTNERS**

Checked By: <i>REV</i>	DATE: 11/20/22
Drawn By: <i>REV</i>	DATE: 11/20/22
Scale: 1" = 50' HORIZ.	1" = 5' VERT.

Drawing No.  
**8 of 12**



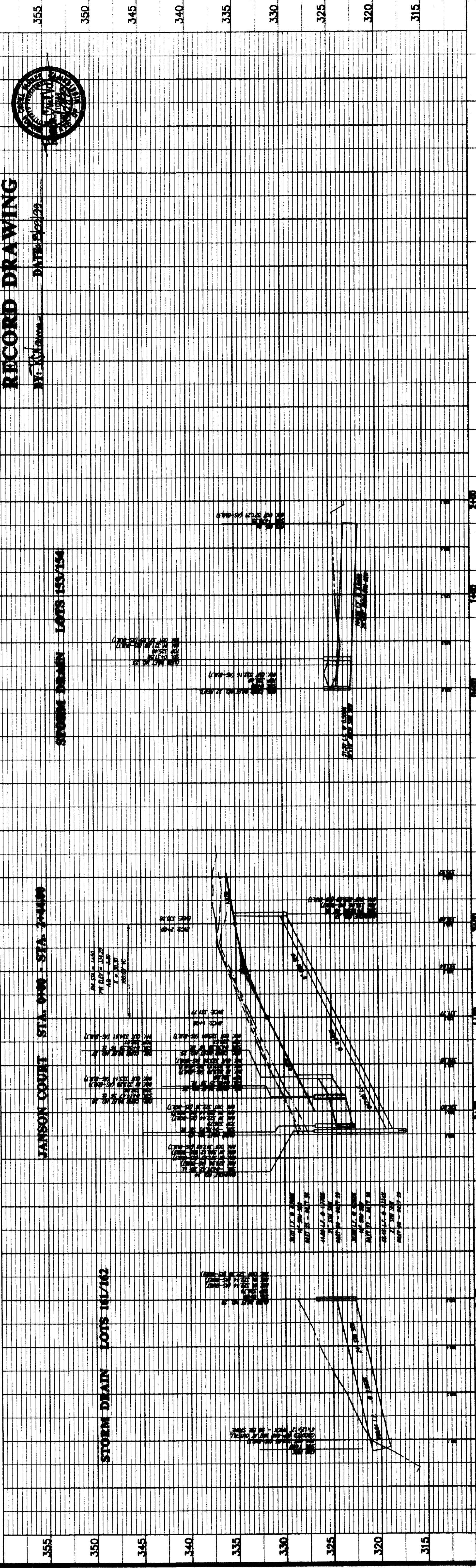


SCALE 1" = 50' HORIZ.  
1" = 5' VERT.



**RECORD DRAWING**

BY: [Signature] DATE: 02/29



JANSON COURT STA. 0+00 - STA. 7+400

STORM DRAIN LOTS 154/154

355

350

345

340

335

330

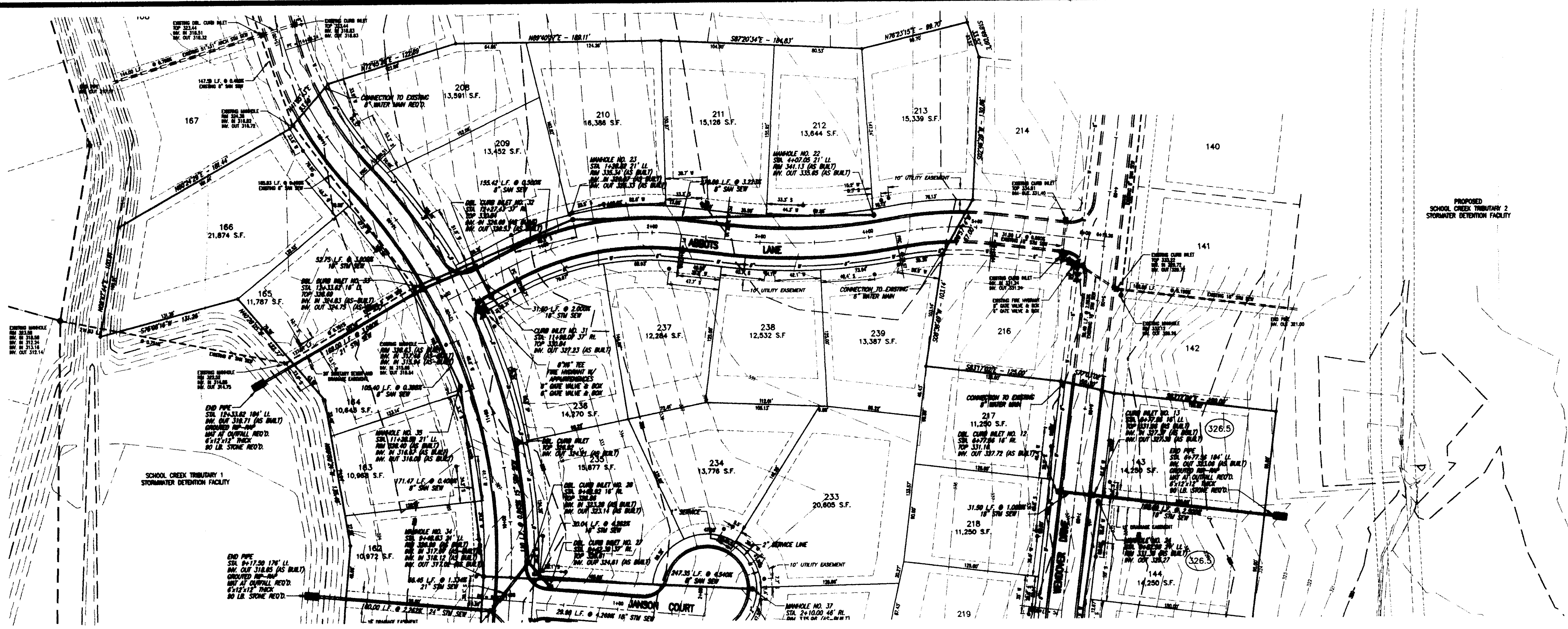
325

320

315

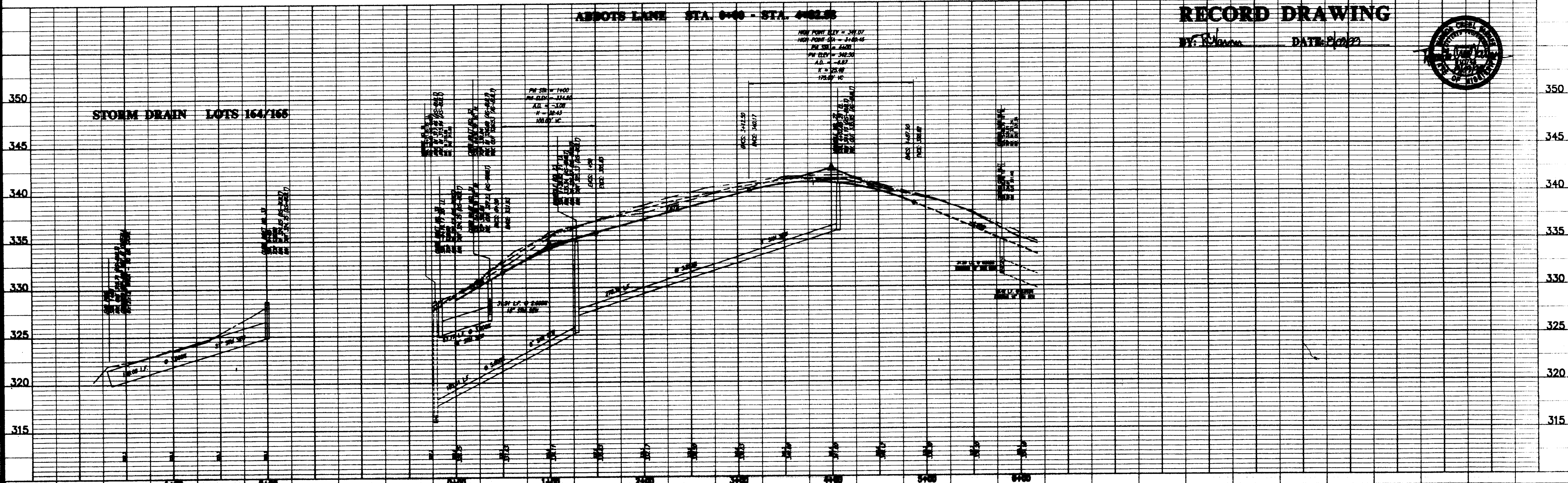
Drawing No. **STIRLING**  
 Prepared For **SHADWOOD PARTNERS**  
**PLAN AND PROFILE**  
**JANSON COURT STA. 0+00 - STA. 7+400**  
**STORM DRAIN LOTS 154/154 & LOTS 154/154**  
**WENDOVER, PART 3B**  
**CITY OF RIDGELAND**  
**MADISON COUNTY, MISSISSIPPI**

355  
350  
345  
340  
335  
330  
325  
320  
315  
1400  
1450  
1500  
1550  
1600  
1650  
1700  
1750  
1800  
1850  
1900  
1950



87
88
89
90
MONTRACHE
91
92
93
94
95

SCALE 1" = 50' HORIZ.  
1" = 5' VERT.



**RECORD DRAWING**

BY: R. Gibson DATE: 8/20/22



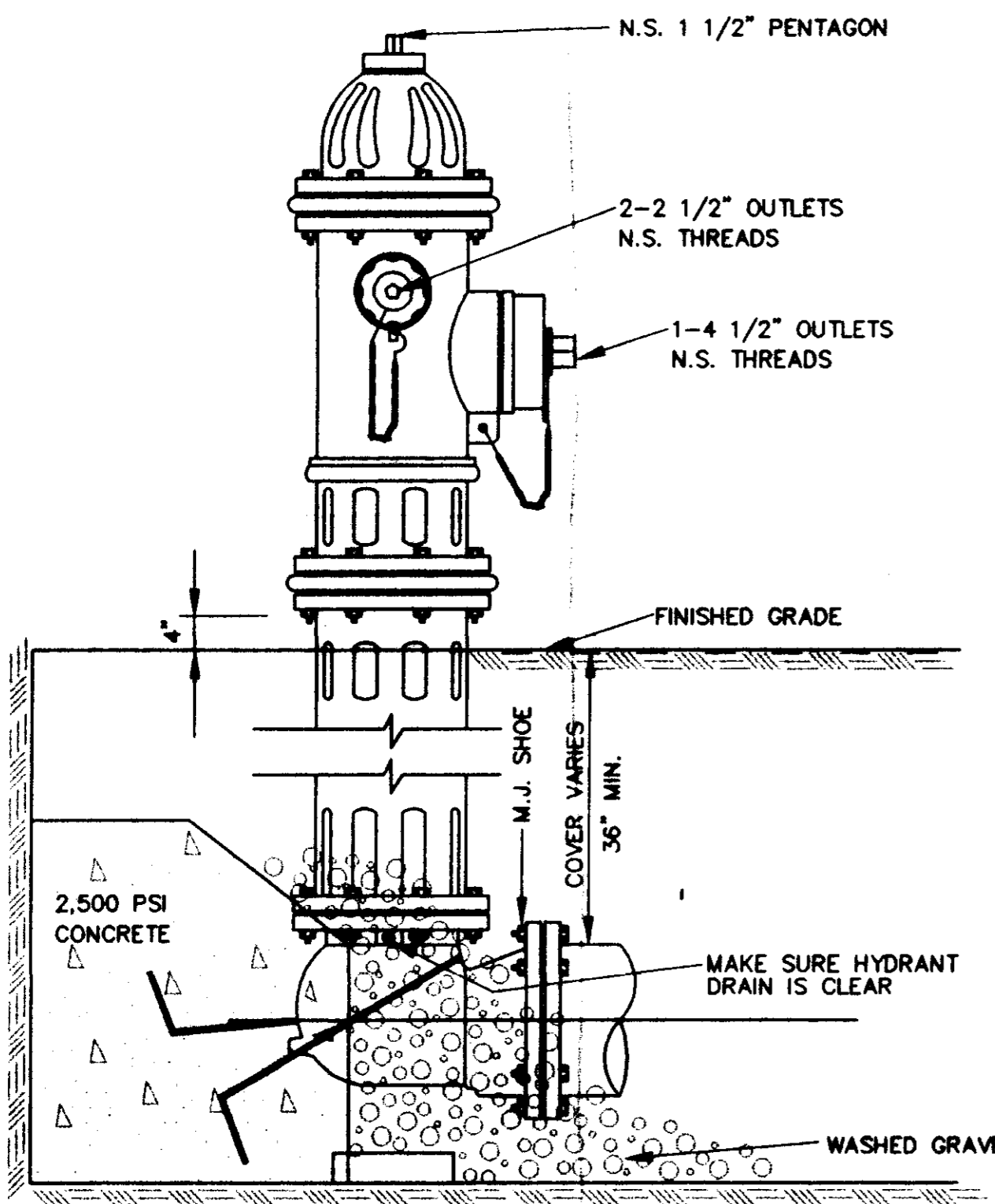
WENDOVER, PART 3B  
CITY OF RIDGELAND  
MADISON COUNTY, MISSISSIPPI

**PLAN AND PROFILE**  
ABBOTS LANE STA. 0+00 - STA. 0+25.5  
STORM DRAIN LOTS 164/165

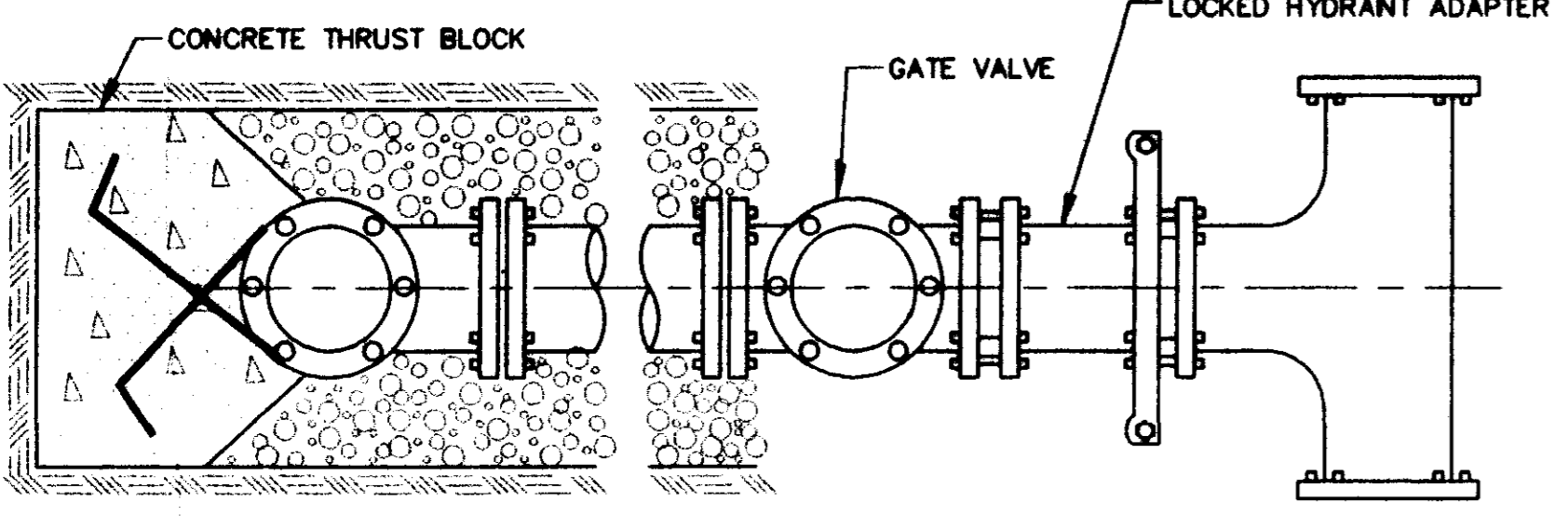
Prepared For  
**SHADOWOOD PARTNERS**

Checked by: <u>REV</u>	DATE: <u>8/20/22</u>		Drawing No. <b>10 of 12</b>
Drawn by: <u>PKW</u>	DATE: <u>8/20/22</u>		
Checked by: <u>REV</u>	DATE: <u>8/20/22</u>		

6: WENDOVER\_3B-001.dwg Thu Aug 05 12:30:19 1999 Glynn Bates - Sterling Consultants, Inc.



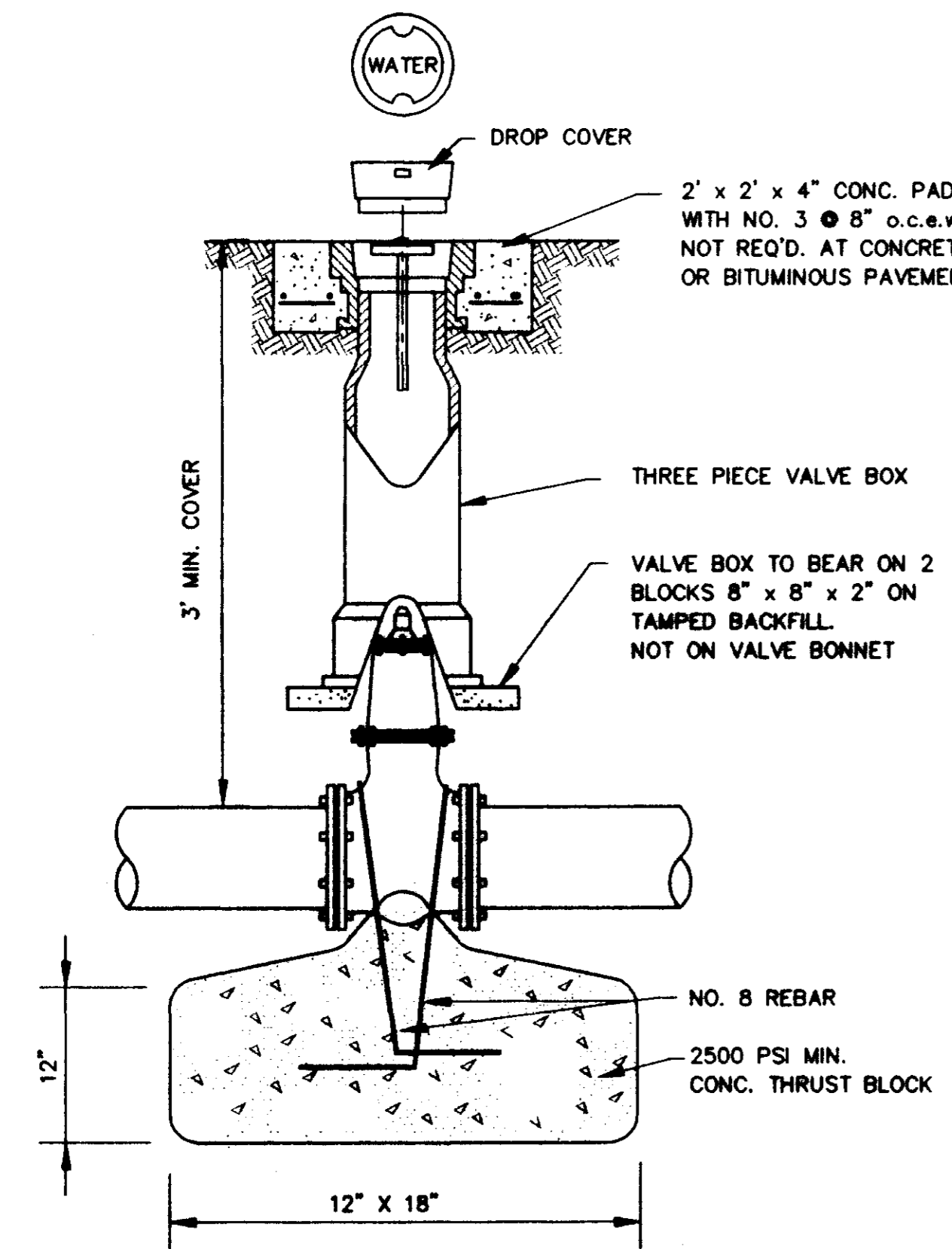
**ELEVATION**



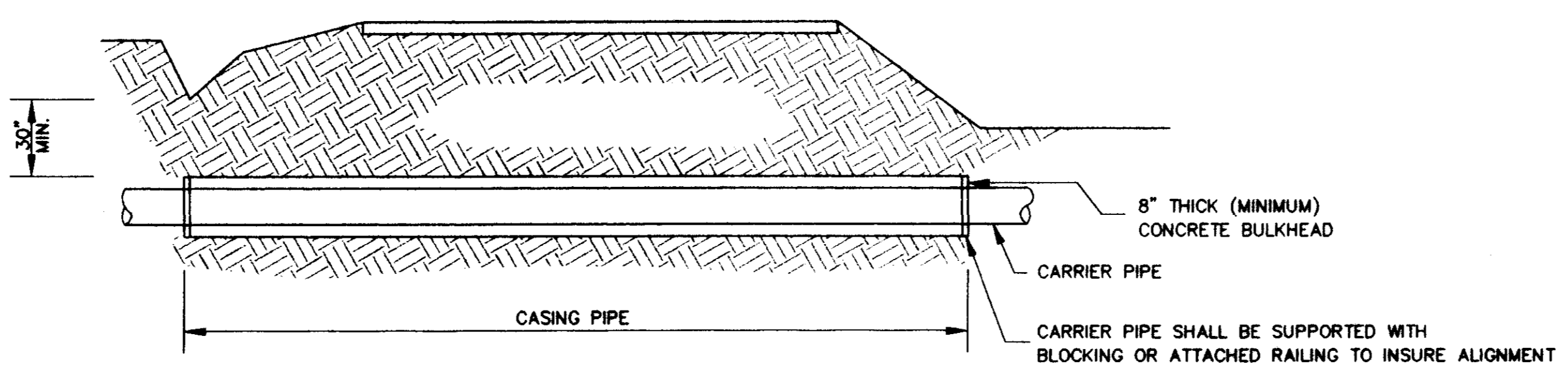
**PLAN**

**TYPICAL FIRE HYDRANT INSTALLATION**

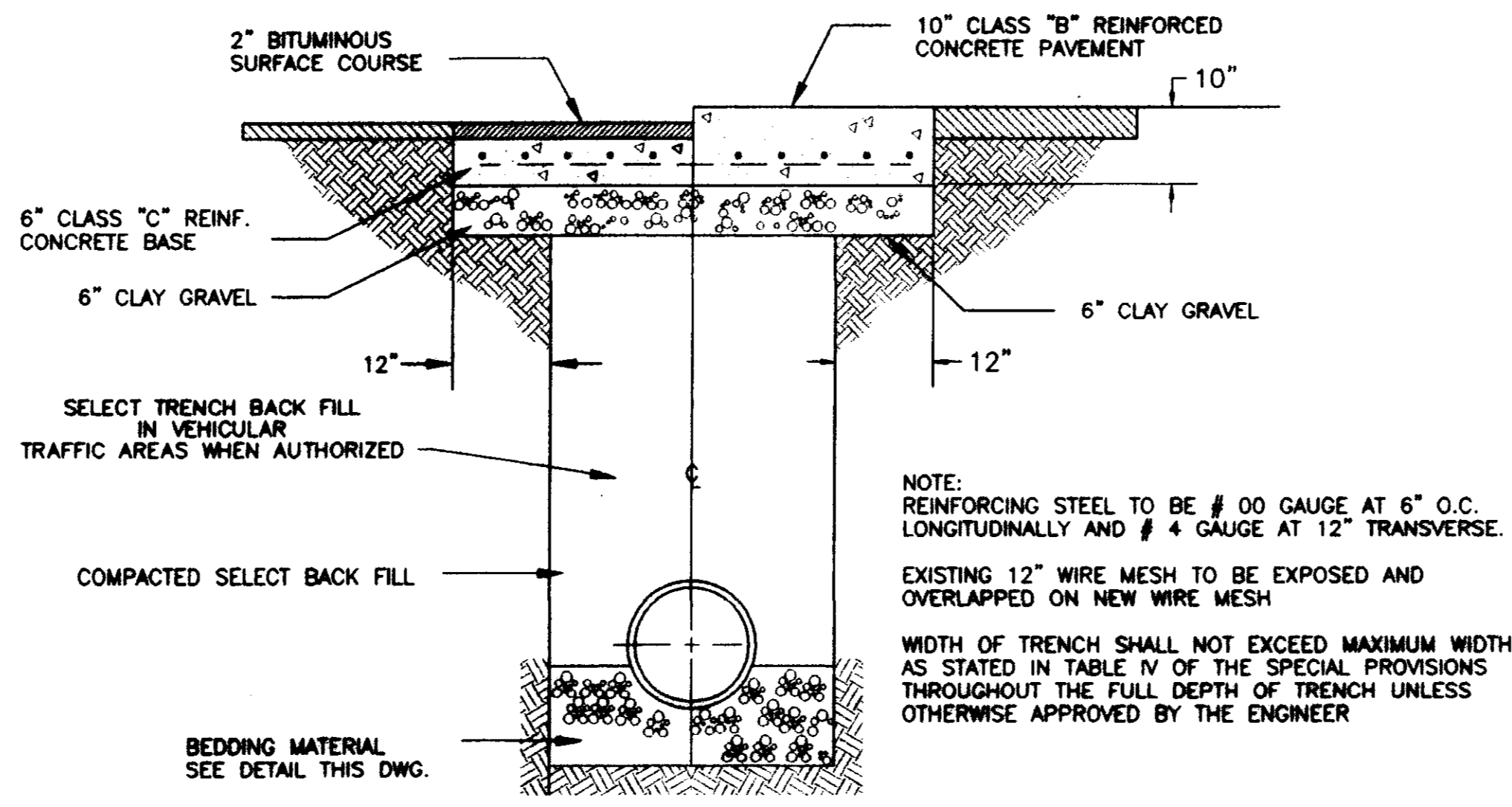
NOTE: GATE VALVES WILL BE REQUIRED ON ALL FIRE HYDRANT LEGS.  
N.T.S.



**GATE VALVE DETAIL**  
NOT TO SCALE

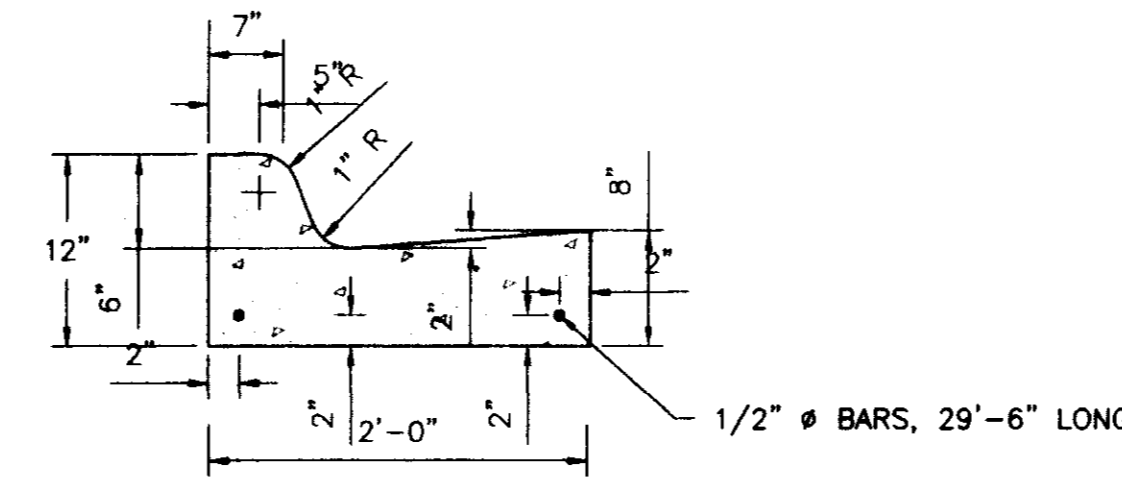


**TYPICAL BORE SECTION**  
NOT TO SCALE

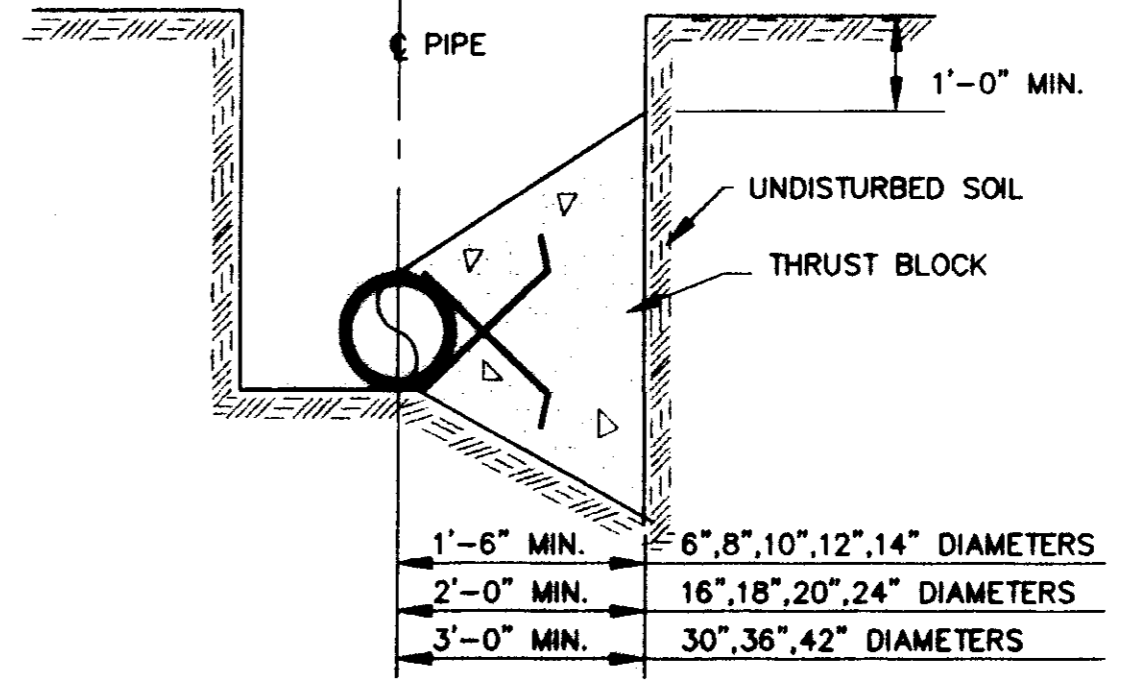


**TYPICAL ROADWAY SECTION**  
NOT TO SCALE

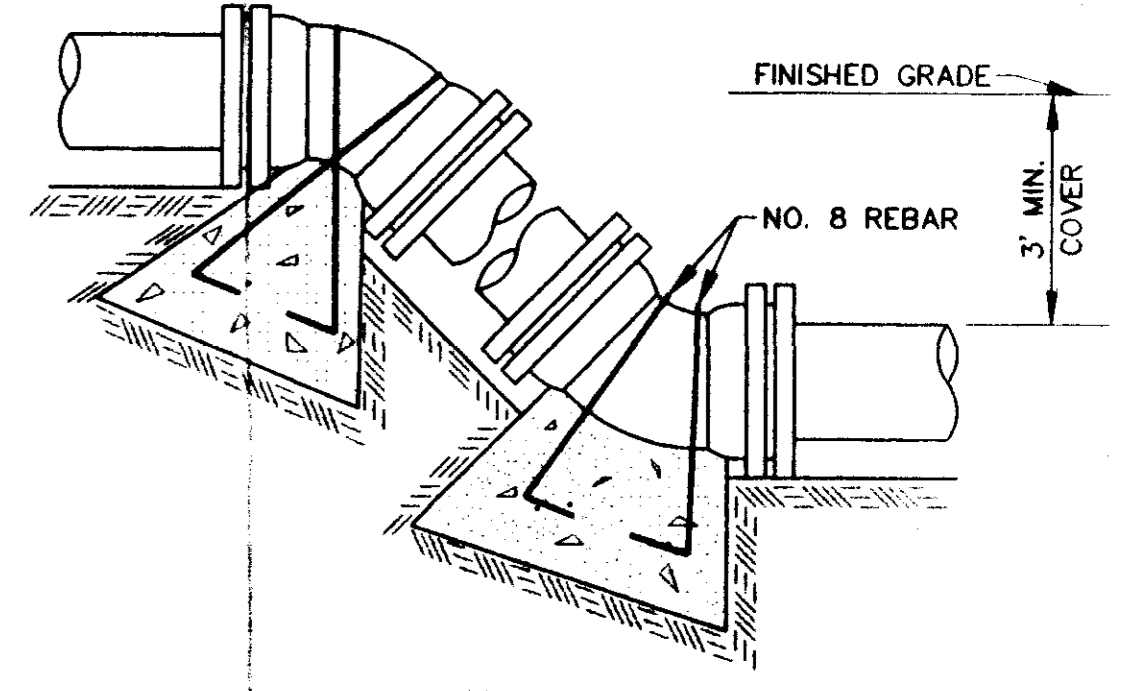
NOTE:  
2 - 3/4\"/>



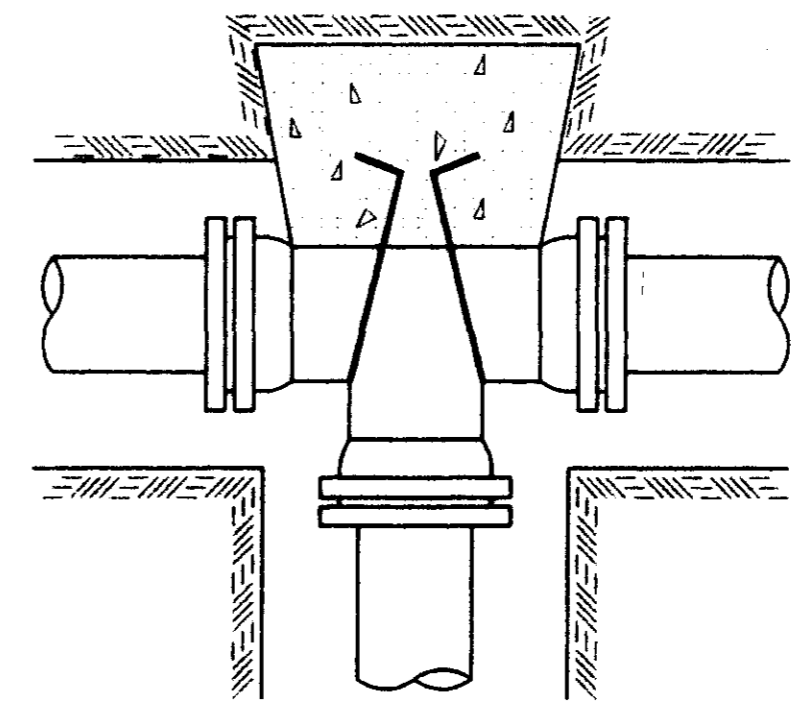
**STANDARD CURB AND GUTTER**  
N.T.S.



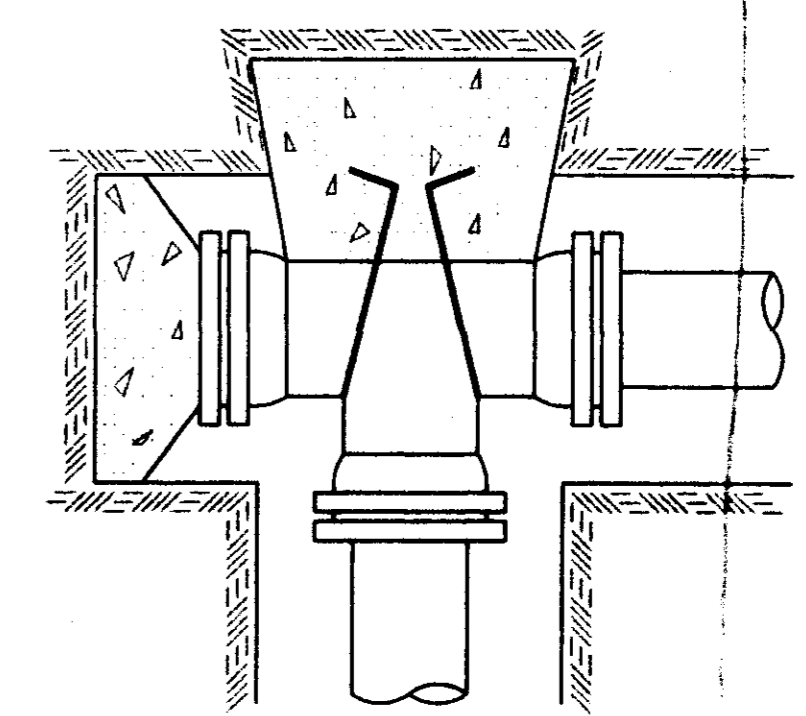
**TYPICAL CROSS SECTION**



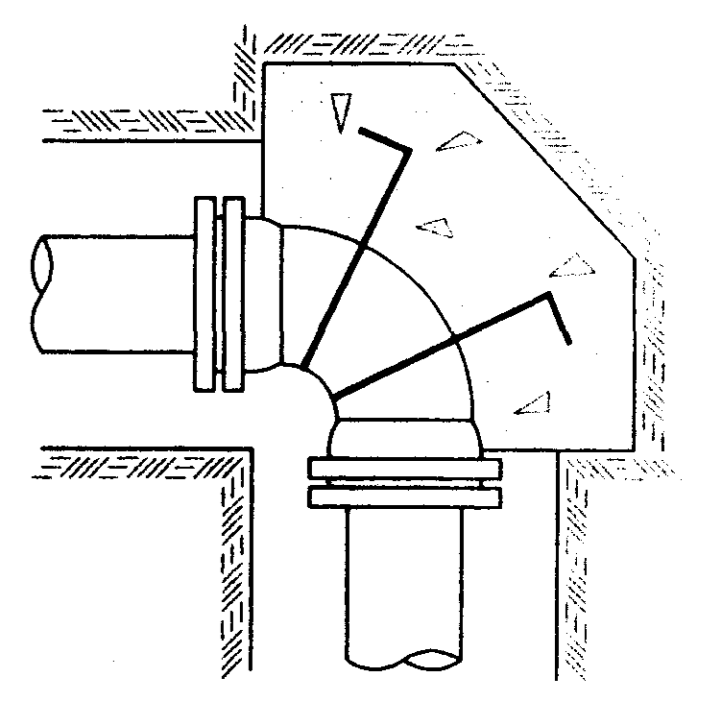
**VERTICAL BENDS**



**TEE**



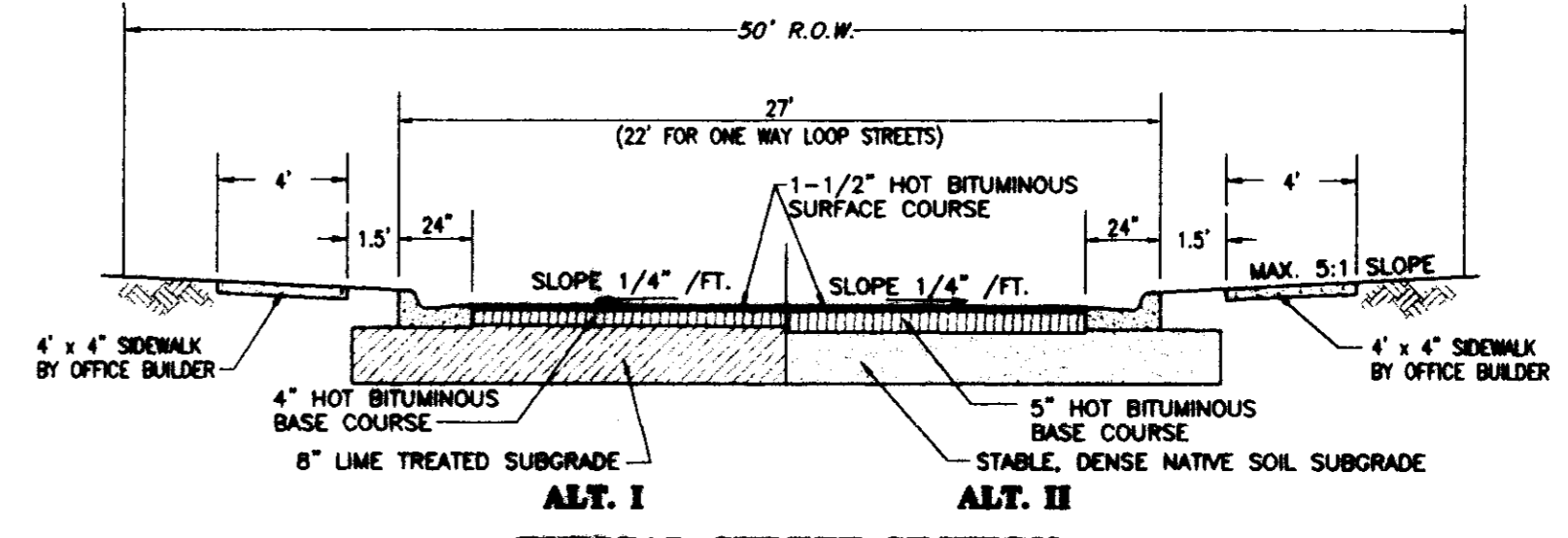
**PLUGGED TEE**



**90 BEND**

**TYPICAL THRUST BLOCKING IN WATER MAINS AND SEWAGE FORCE MAINS**

NOTE: ALL THRUST BLOCKS 2,500 PSI CONCRETE AGAINST UNDISTURBED EARTH



**TYPICAL STREET SECTION**  
NOT TO SCALE

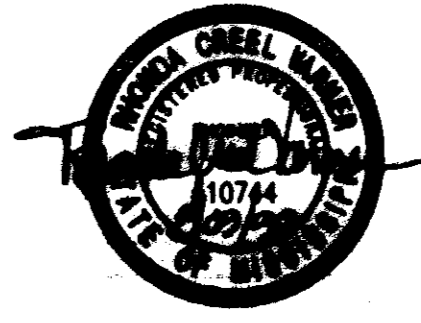
**RECORD DRAWING**

BY: *R. Blum* DATE: *1/2/20*

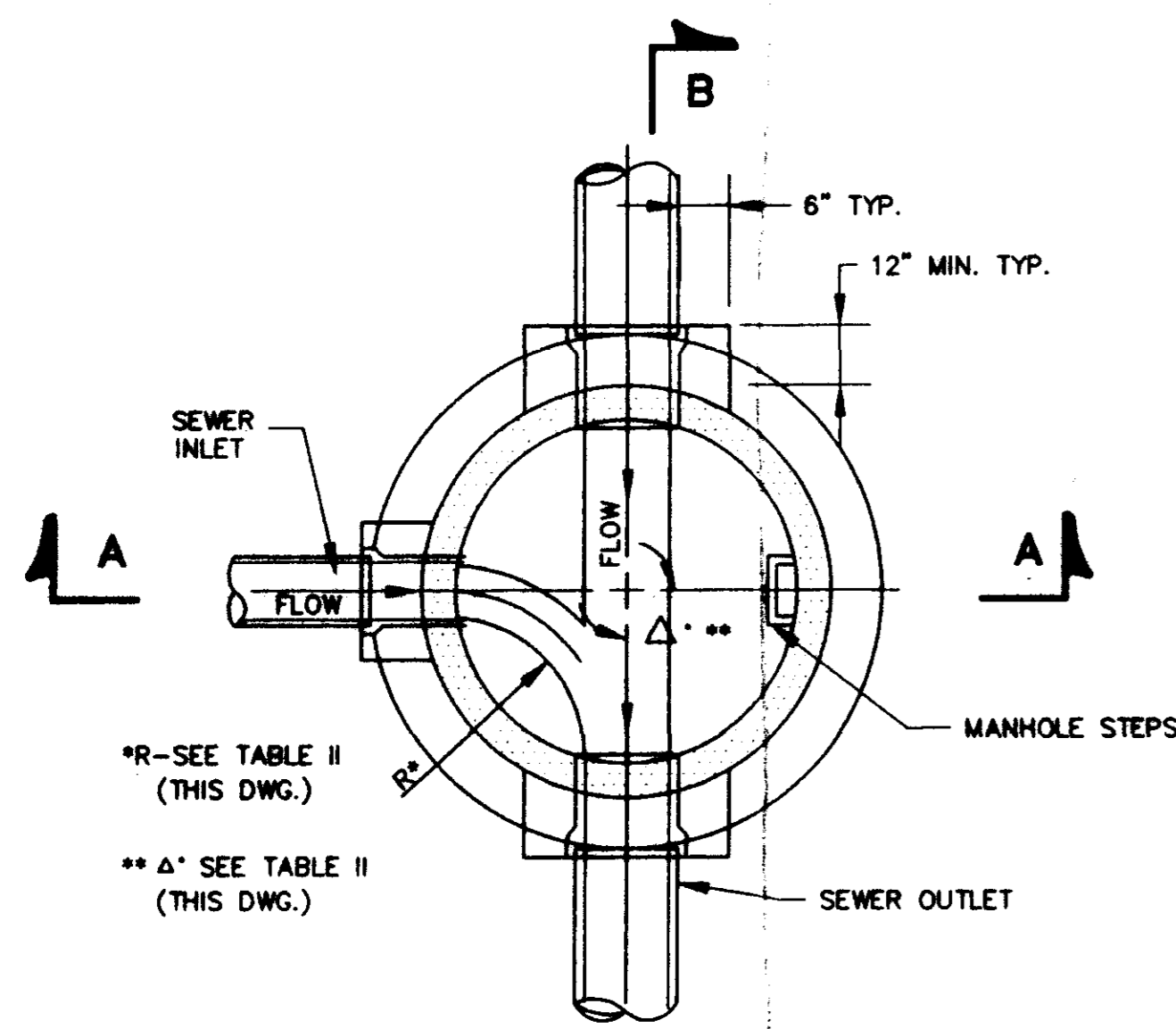
WINDOVER, PART 3B  
A DEVELOPMENT OF  
LAKE HARBOUR ROAD, L.P.

**STANDARD  
MISCELLANEOUS DETAILS**

**CITY OF RIDGELAND  
MADISON COUNTY, MISSISSIPPI**



DESIGN R.C.V.	DATE 1/2/20	DRAWING NO. <b>11 of 12</b>
CHECK R.C.V.	DATE 1/2/20	

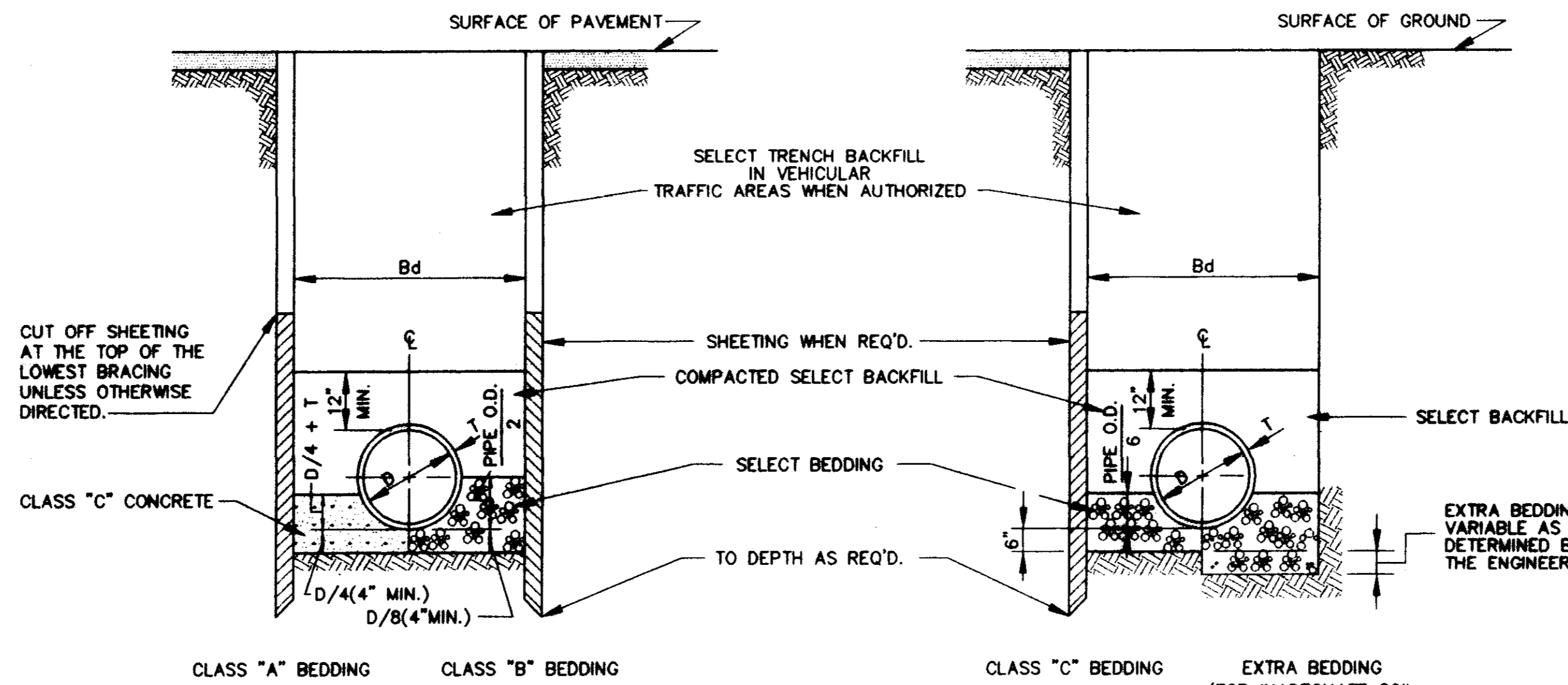


**SECTIONAL PLAN  
STANDARD MANHOLE**  
NOT TO SCALE

TABLE II  
GOVERNING DIMENSIONS FOR MANHOLES

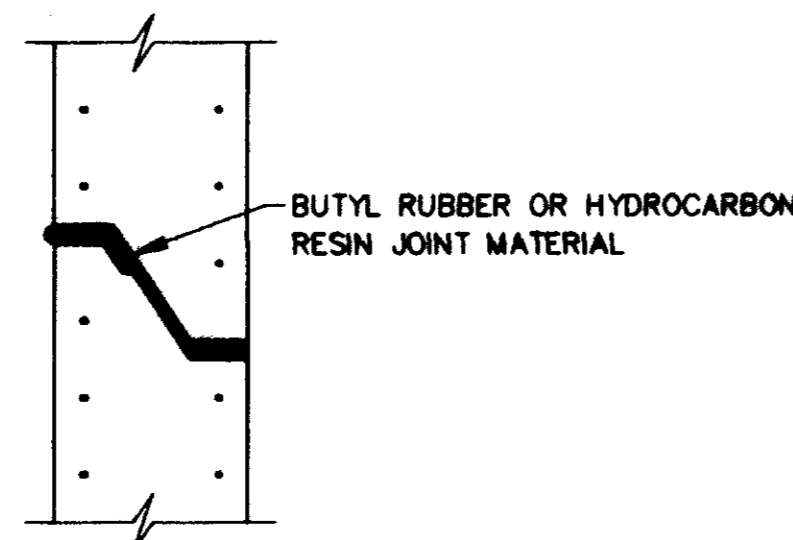
PIPE SIZE	Δ ANGLE	BASE DIAMETER **	"R" *
8" THRU 12"	0° TO 90°	4"	1'-6"
15"	0° TO 60°	4"	1'-10"
15"	60° TO 90°	4"	1'-10"
18"	0° TO 60°	4"	2'-3"
18"	60° TO 90°	4"	1'-10"
21"	0° TO 60°	4"	2'-7"
21"	60° TO 90°	5"	2'-4"
24"	0° TO 45°	4"	3'-0"
24"	45° TO 90°	5"	2'-3"
30"	0° TO 60°	5"	3'-9"
30"	60° TO 90°	6"	2'-8"
36"	0° TO 60°	6"	4'-6"
36"	60° TO 90°	7"	3'-11"
42"	0° TO 60°	7"	5'-3"
42"	60° TO 90°	8"	4'-7"
48"	0° TO 60°	8"	6'-0"
48"	60° TO 90°	9"	5'-3"

\* SEE SECTIONAL PLAN, STANDARD MANHOLE  
\*\* PRECAST MANHOLE

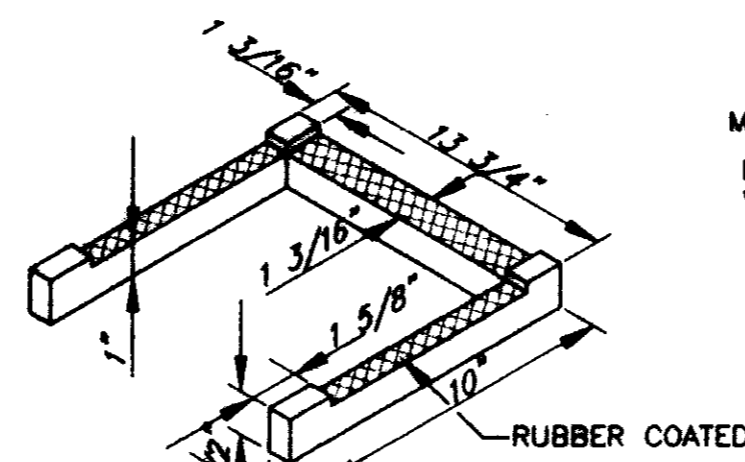


BEDDING FOR VITRIFIED CLAY, CONCRETE & ABS PIPE

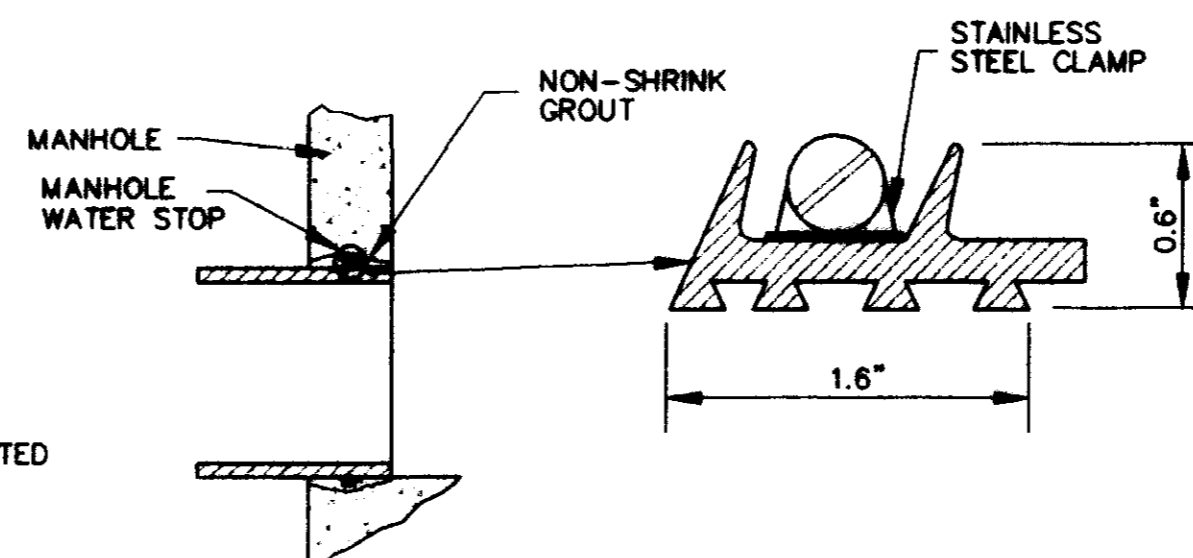
**TYPICAL TRENCH DETAILS**  
NOT TO SCALE



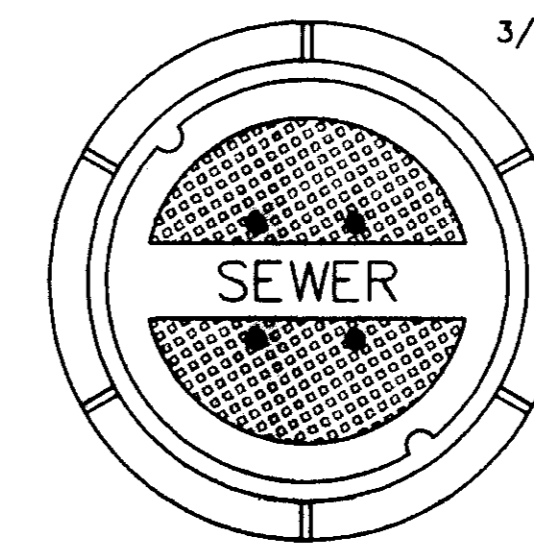
**TYPICAL PRECAST CONCRETE  
MANHOLE JOINT DETAIL**  
N.T.S.



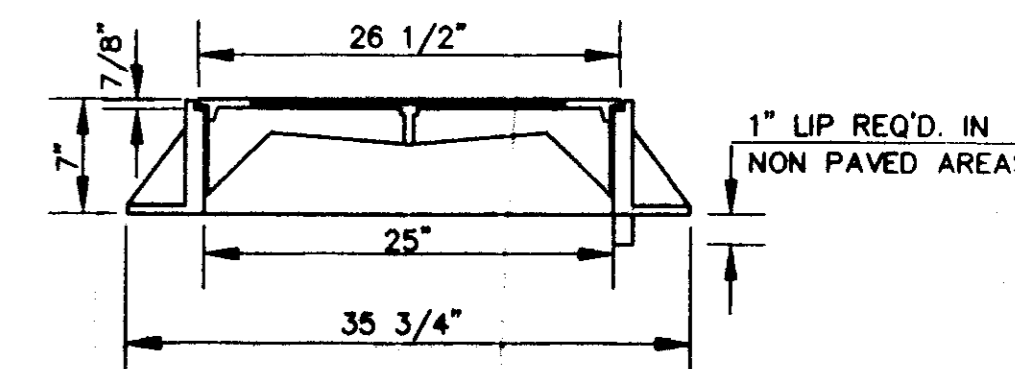
**MANHOLE STEP DETAIL**  
NOT TO SCALE



**TYPICAL MANHOLE WATER STOP  
FOR ABS, CLAY OR PVC PIPE**  
EXISTING AND "STRADDLE" MANHOLES  
N.T.S.



**TOP PLAN OF COVER**

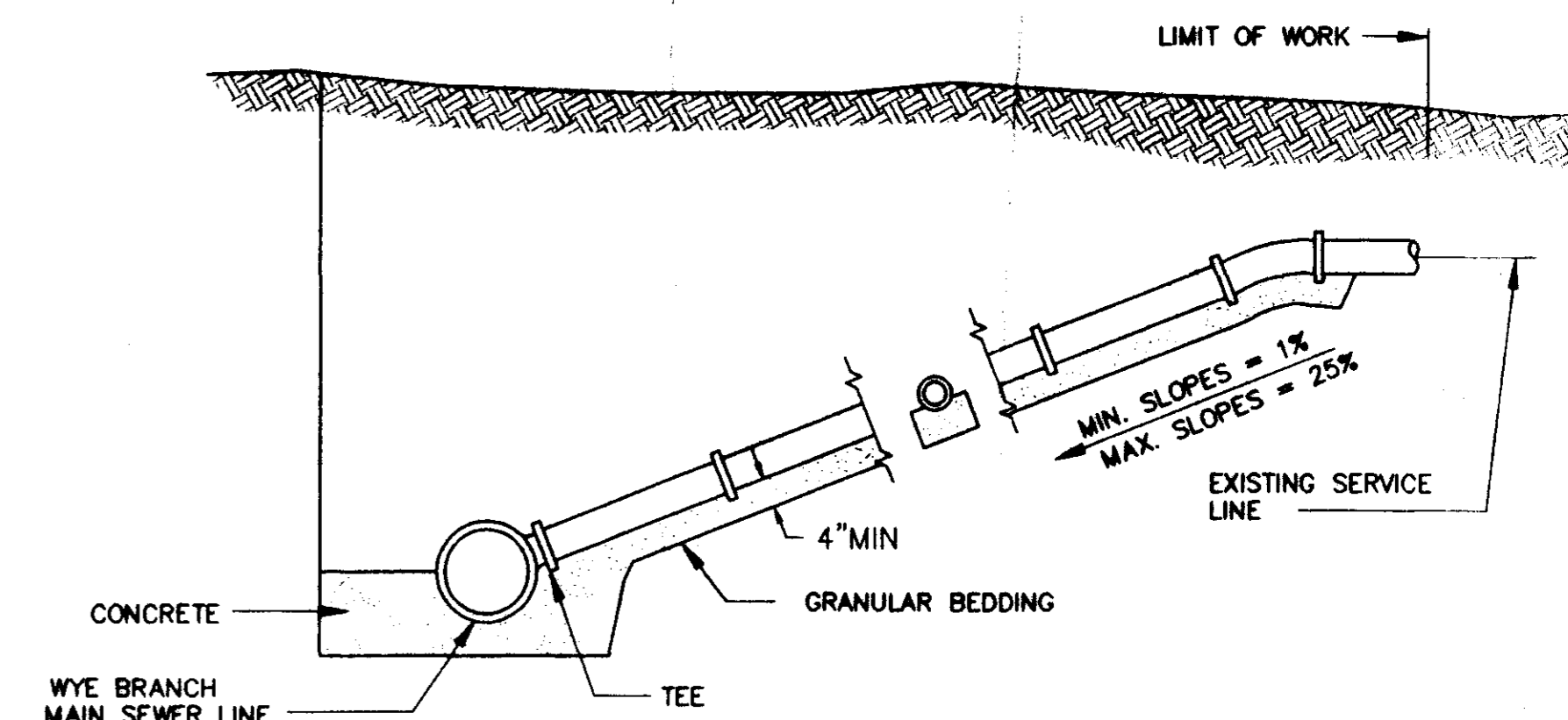


**SECTION**

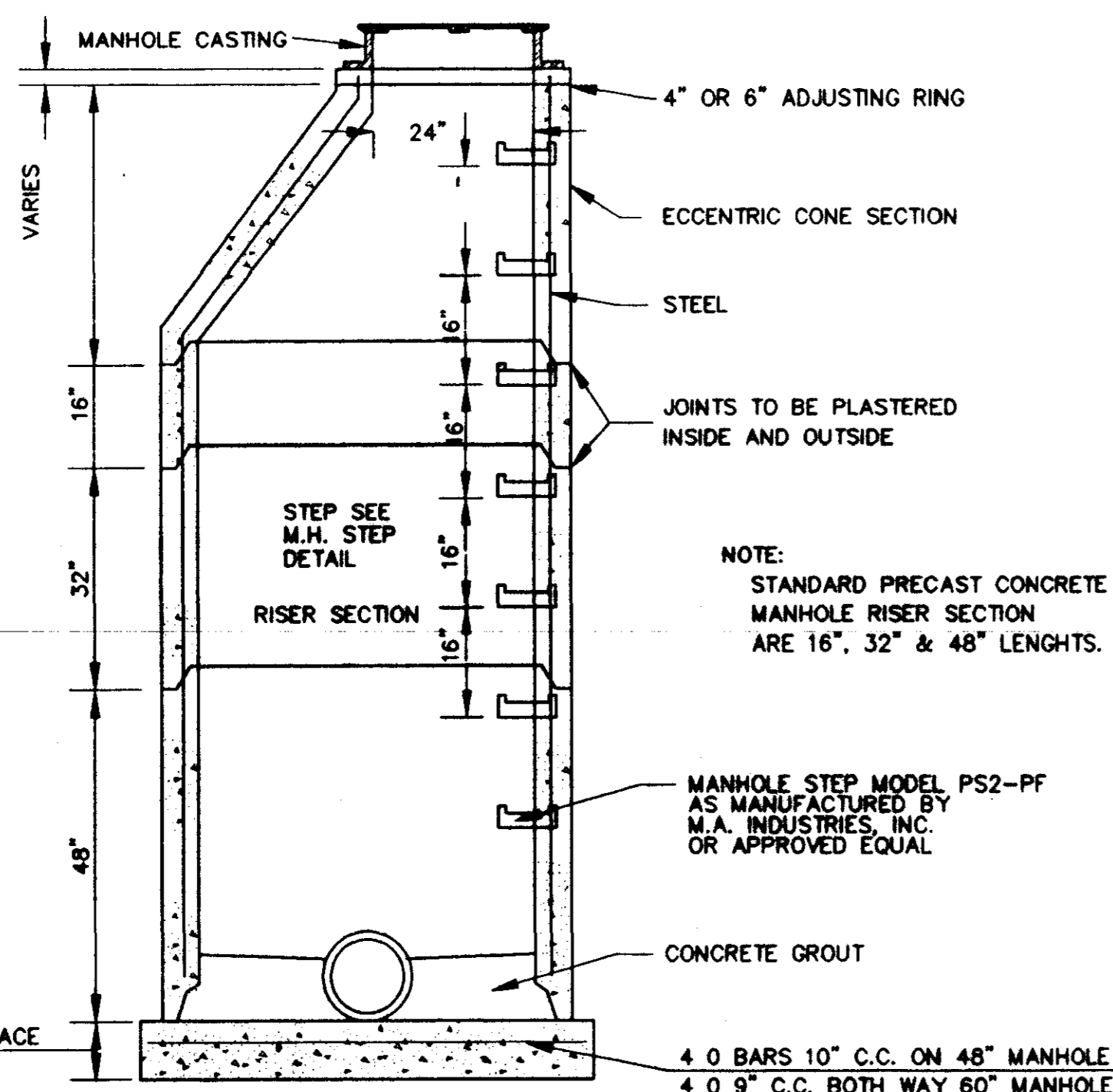
FRAME & COVER WEIGHT 420 LBS.

**STANDARD MANHOLE FRAME AND COVER**

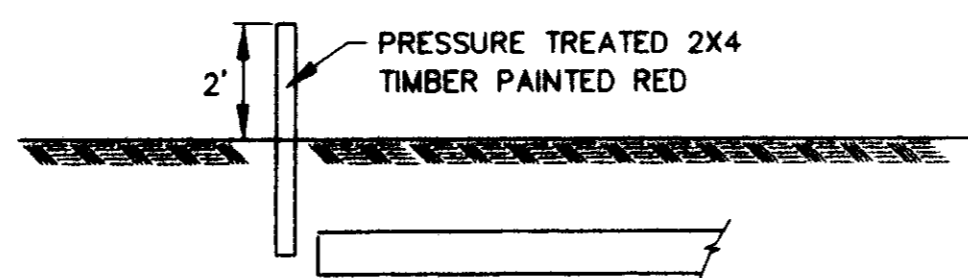
N.T.S.



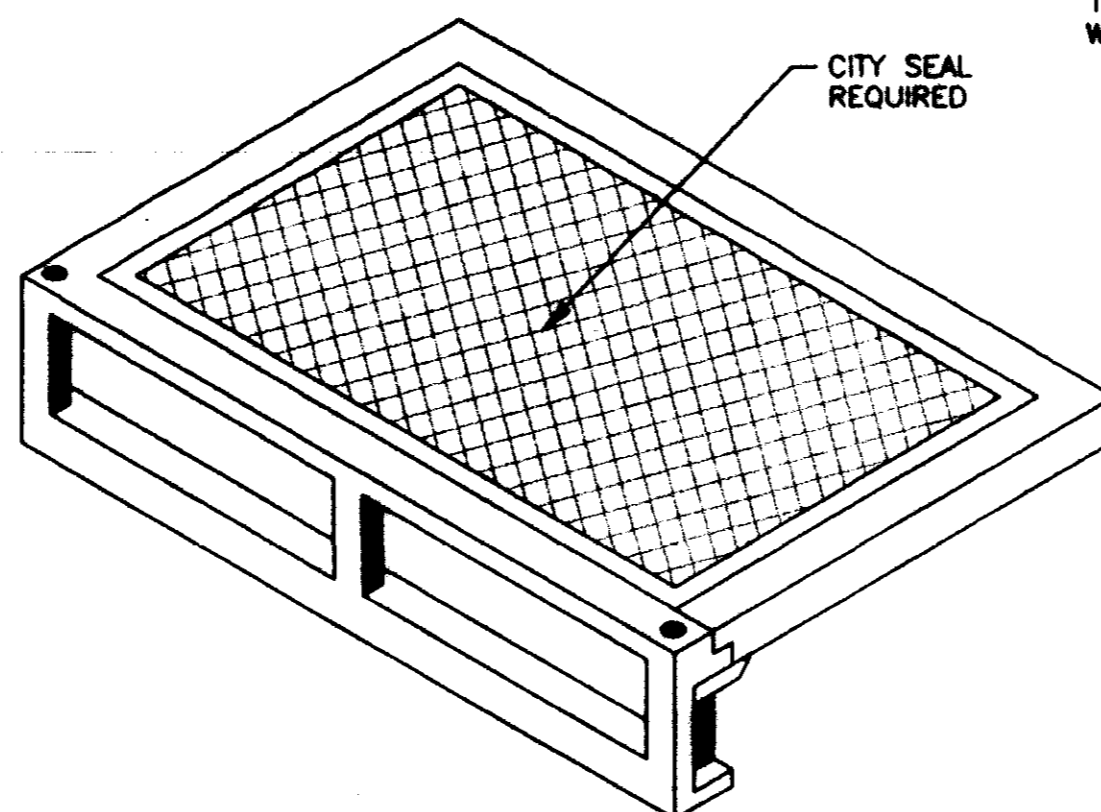
**TYPICAL SERVICE LINE CONNECTION**  
NOT TO SCALE



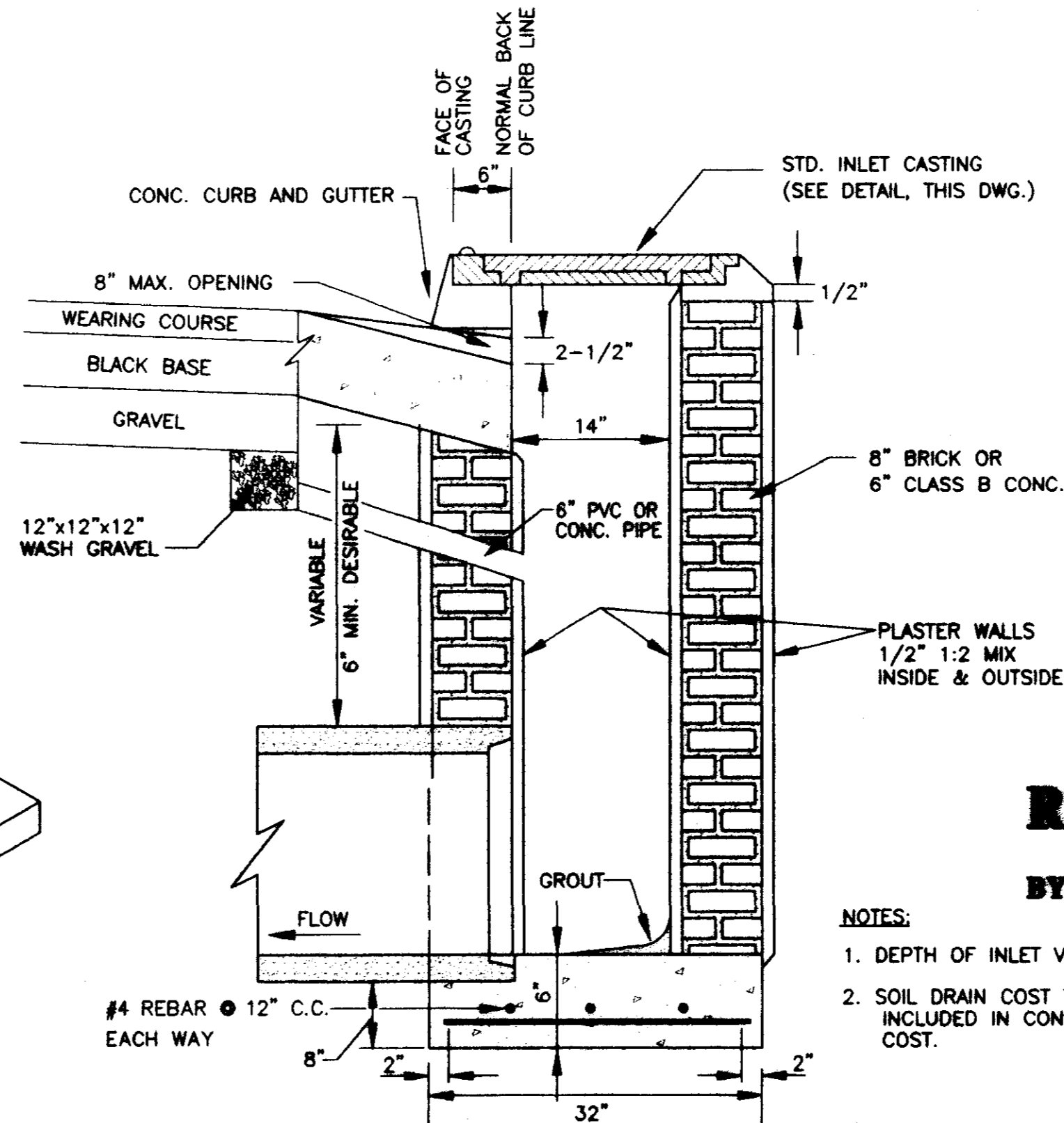
**SECTION OF PRECAST CONCRETE MANHOLE**  
N.T.S.



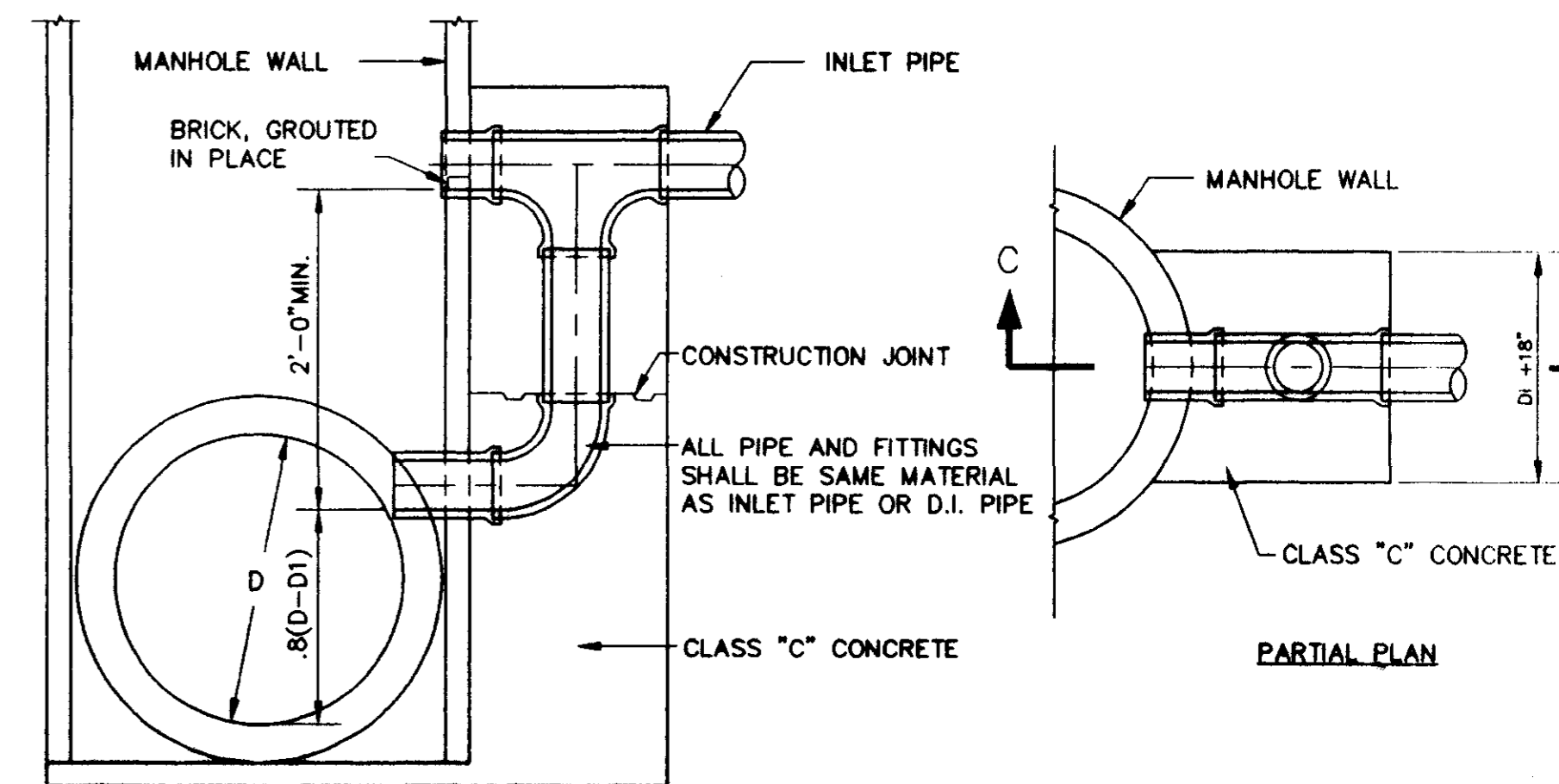
**SERVICE LINE MARKER**  
NOT TO SCALE



**STANDARD CURB INLET CASTING**  
(VULCAN V-4302-1 OR HARPER RCB-7)  
N.T.S.



**SECTION OF STANDARD CURB INLET**

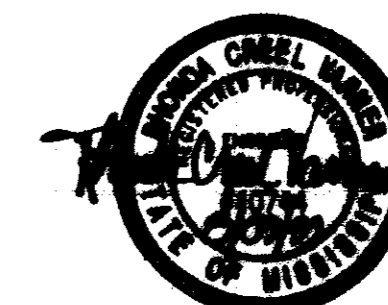


**TYPICAL VERTICAL DROP INLET AT MANHOLE**  
N.T.S.

**RECORD DRAWING**

BY: *[Signature]* DATE: *4/23*

- NOTES:
1. DEPTH OF INLET VARIABLE.
  2. SOIL DRAIN COST TO BE INCLUDED IN CONSTRUCTION COST.



WENDOVER, PART 3B  
A DEVELOPMENT OF  
LAKE HARBOUR ROAD, L.P.

**STANDARD  
SEWER DETAILS**

CITY OF RIDGELAND  
MADISON COUNTY, MISSISSIPPI

REVISIONS:  
NO. R.C.V. DATE R.C.V. DATE  
1 10/17/78 10/17/78  
2 11/17/78 11/17/78  
3 12/17/78 12/17/78  
4 1/17/79 1/17/79

STERLING  
CONSULTANTS

DRAWING NO. 12 OF 12