

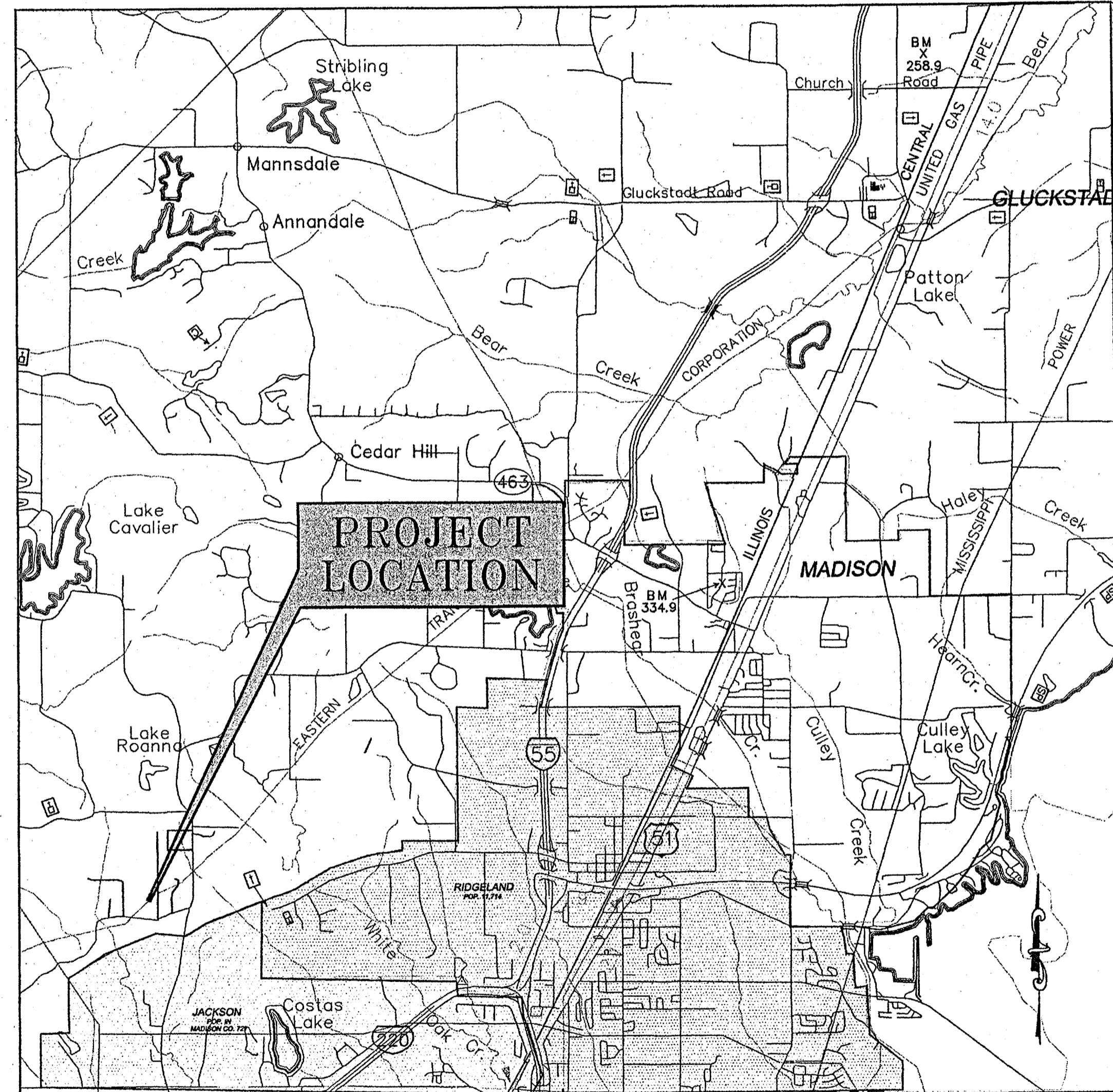
WESTERN WATER SYSTEM IMPROVEMENTS

PHASE III WATER CONNECTOR LINES

CITY OF RIDGELAND, MISSISSIPPI

WESTERN WATER SYSTEM IMPROVEMENTS
PHASE III WATER CONNECTOR LINES
CITY OF RIDGELAND, MS

INDEX TO DRAWINGS	
SHEET NO.	SHEET TITLE
G1.0	COVER SHEET
G2.0	VICINITY MAP & PROJECT NOTES
G3.0	BRIDGEWATER CROSSING WATER IMPROVEMENTS SUBDIVISION LAYOUT
G4.0	STORM WATER POLLUTION PREVENTION PLAN
RL P1.0	ROUSER LANE WATER MAIN PLAN VIEW, STA. 10+00 TO STA. 28+63
LBR P1.0	LUBERTHA ROAD WATER MAIN PLAN VIEW, STA.10+00 TO STA. 40+00
LBR P2.0	LUBERTHA ROAD WATER MAIN PLAN VIEW, STA.40+00 TO STA. 44+34
PR P1.0	POWELL ROAD WATER MAIN PLAN VIEW, STA. 10+00 TO STA. 39+00
PR P2.0	POWELL ROAD WATER MAIN PLAN VIEW, STA. 39+00 TO STA. 52+96
KR P1.0	KIRKWOOD ROAD WATER MAIN PLAN VIEW, STA. 10+00 TO STA. 19+05
SL P1.0	SAMUELS LANE WATER MAIN PLAN VIEW, STA. 10+00 TO STA. 39+79
LHR P1.0	LAKE HOLLEMAN ROAD WATER MAIN PLAN VIEW, STA. 10+00 TO STA. 42+10
BC P1.0	BRIDGEWATER CROSSING WATER MAIN PLAN VIEW, STA. 10+00 TO STA. 18+45
WSL P1.0	430 - 463 LIVINGSTON ROAD WATER SERVICE LINE PLAN VIEW
WSL P2.0	555 LIVINGSTON ROAD WATER SERVICE LINE PLAN VIEW
WSL P3.0	174 - 180 LUBERTHA ROAD WATER SERVICE LINE PLAN VIEW
CD1.0	CONNECTION DETAILS
WD1.0	WATER DETAILS
WD2.0	WATER DETAILS
WD3.0	WATER DETAILS
WD4.0	MAINTENANCE OF TRAFFICE DETAILS
WD5.0	EROSION CONTROL DETAILS
WD6.0	EROSION CONTROL DETAILS



VICINITY MAP
 NOT TO SCALE
APRIL 2012
WEI #: W06018C

UTILITIES:

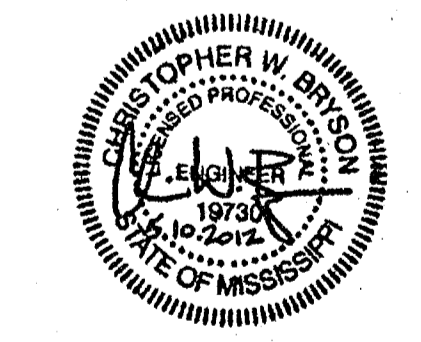
- TELPAC NETWORKS - FIBER OPTIC - 601.487.7196 (business)
- ATMOS ENERGY - GAS - 601.991.2388 (locate service)
- TEXAS EASTERN PIPELINE - GAS - 601.982.8290 (business)
- ENERGY MISSISSIPPI, INC. - ELECTRIC - 601.991.2388 (locate service), 601.351.4119 (substation)
- COMCAST - CABLE - 601.991.2388 (locate service)
- AT&T - PHONE - 601.991.2388 (locate service)
- CITY OF RIDGELAND - WATER & SEWER - 601.853.2027 (business)

MAYOR:
 GENE F. MCGEE

- BOARD OF ALDERMAN:**
- D.I. SMITH, AT-LARGE
 - KEN HEARD, WARD 1
 - CHUCK GAUTIER, WARD 2
 - KEVIN HOLDER, WARD 3
 - BRIAN RAMSEY, WARD 4
 - SCOTT JONES, WARD 5
 - WESLEY HAMLIN, WARD 6

PUBLIC WORKS DIRECTOR:
 MIKE MCCOLLUM

DRAWING REVISIONS		
NO.	REMARKS	DATE



DRAWN BY:	CYS	SCALE:	As Shown
DESIGNED BY:	BGG	DATE:	April 2012
CHECKED BY:	CTK	PROJECT:	W06018C
DRAWING TITLE:			

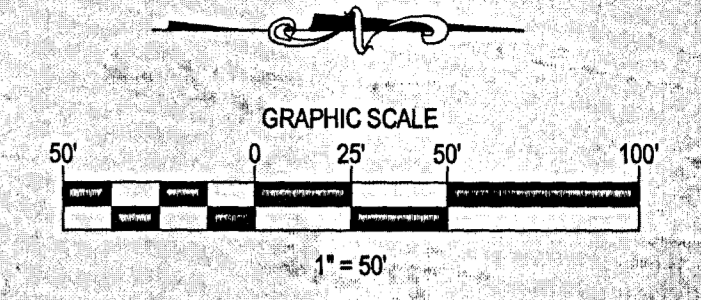
Cover Sheet

SHEET NUMBER:
G1.0

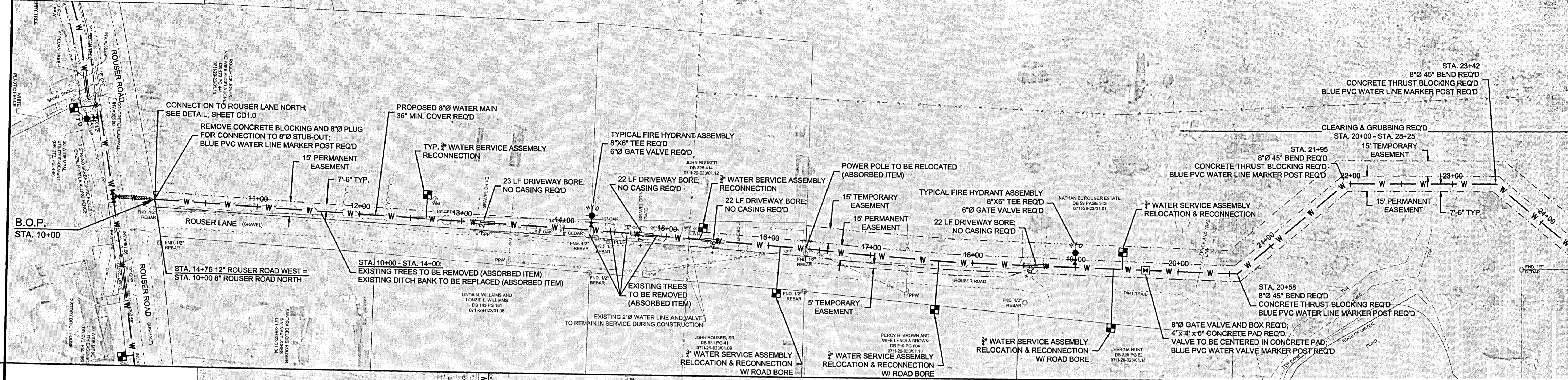
Ridgeland, City of W06018C A-C Western Water/W06018C Covering/W06018C Connector Lines PP_C01RINAL.DWG 01/02/2012 4:25:54 PM I:\pww\w06018C\0105500

LEGEND

- PROP. WATER MAIN
- PROP. EASEMENT
- - - EXIST. EASEMENT
- - - PROPERTY LINE/ROW
- VEGETATION
- ELECTRIC POWER LINE
- UNDERGROUND GAS MAIN
- UT TELEPHONE LINE
- FL FLOWLINE
- TOP OF BANK
- EDGE OF PAVEMENT
- X FENCE



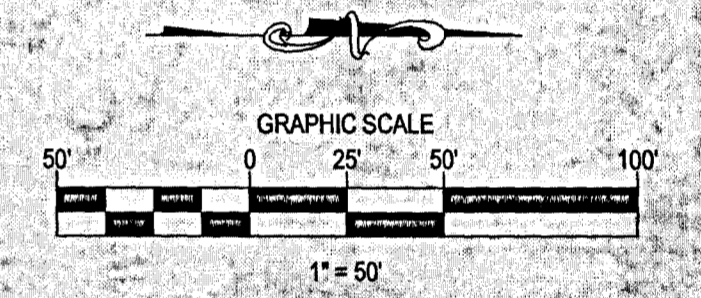
B.O.P. STA. 10+00



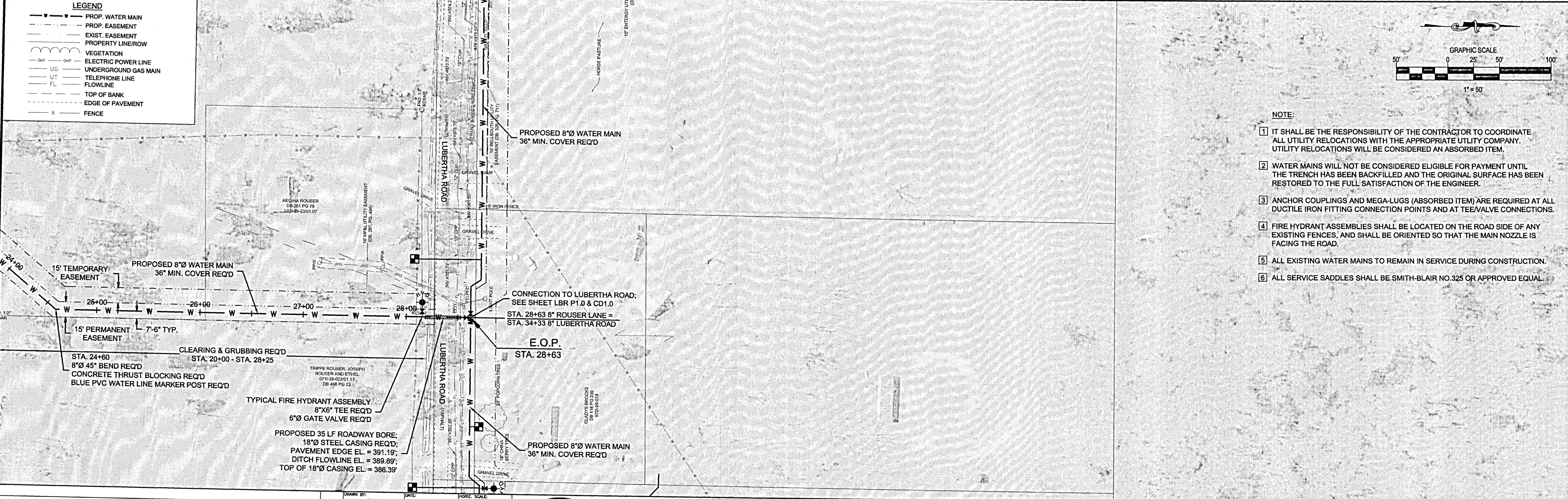
MATCHLINE STA. 24+50

LEGEND

- PROP. WATER MAIN
- PROP. EASEMENT
- - - EXIST. EASEMENT
- - - PROPERTY LINE/ROW
- VEGETATION
- ELECTRIC POWER LINE
- UNDERGROUND GAS MAIN
- UT TELEPHONE LINE
- FL FLOWLINE
- TOP OF BANK
- EDGE OF PAVEMENT
- X FENCE



MATCHLINE STA. 24+50



- NOTE:**
- 1) IT SHALL BE THE RESPONSIBILITY OF THE CONTRACTOR TO COORDINATE ALL UTILITY RELOCATIONS WITH THE APPROPRIATE UTILITY COMPANY. UTILITY RELOCATIONS WILL BE CONSIDERED AN ABSORBED ITEM.
 - 2) WATER MAINS WILL NOT BE CONSIDERED ELIGIBLE FOR PAYMENT UNTIL THE TRENCH HAS BEEN BACKFILLED AND THE ORIGINAL SURFACE HAS BEEN RESTORED TO THE FULL SATISFACTION OF THE ENGINEER.
 - 3) ANCHOR COUPLINGS AND MEGA-LUGS (ABSORBED ITEM) ARE REQUIRED AT ALL DUCTILE IRON FITTING CONNECTION POINTS AND AT TEE/VALVE CONNECTIONS.
 - 4) FIRE HYDRANT ASSEMBLIES SHALL BE LOCATED ON THE ROAD SIDE OF ANY EXISTING FENCES, AND SHALL BE ORIENTED SO THAT THE MAIN NOZZLE IS FACING THE ROAD.
 - 5) ALL EXISTING WATER MAINS TO REMAIN IN SERVICE DURING CONSTRUCTION.
 - 6) ALL SERVICE SADDLES SHALL BE SMITH-BLAIR NO.325 OR APPROVED EQUAL.

MATCHLINE STA. 28+63

NO.	DATE	REVISIONS	BY	CHECKED	DATE	PROJECT	SHEET NUMBER

DESIGNED BY: CWB

PROJECT: W06018C

CHECKED BY: BGG

DATE: April 2012

BY: CTK

PROJ. SCALE: 1"=50'

VERT. SCALE: N/A

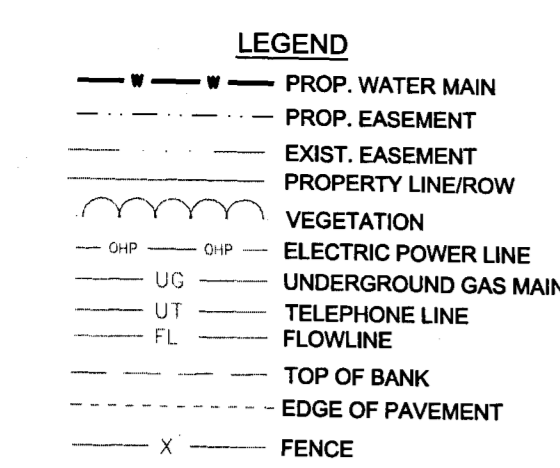
143-A LaFleurs Square
JACKSON, MS 39211
601-355-9526
FAX 601-352-3945

WESTERN WATER SYSTEM IMPROVEMENTS
PHASE III WATER CONNECTOR LINES
CITY OF RIDGELAND, MS

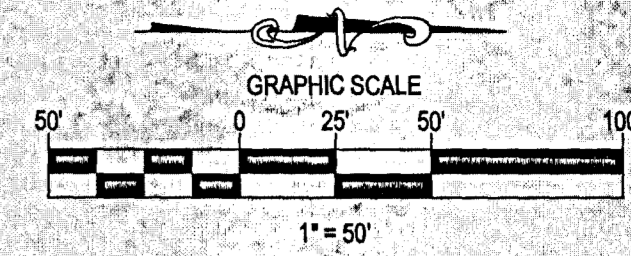
ROUSER LANE WATER MAIN PLAN VIEW
(BASE BID - STA. 10+00 TO STA. 28+63)

SHEET NUMBER:
RL P1.0

P:\Ridgeland_City\106018 AC Western Water\106018C_Connect\106018C_Connect.dwg, 5/16/2012 2:15:48 PM, lryth@wv.com, TDS000

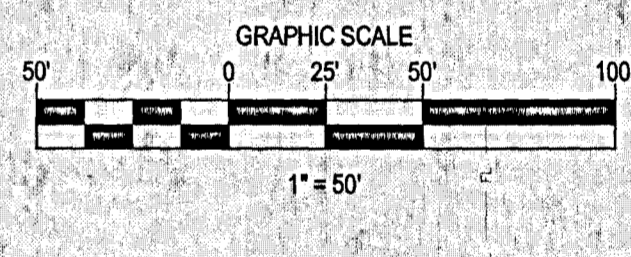
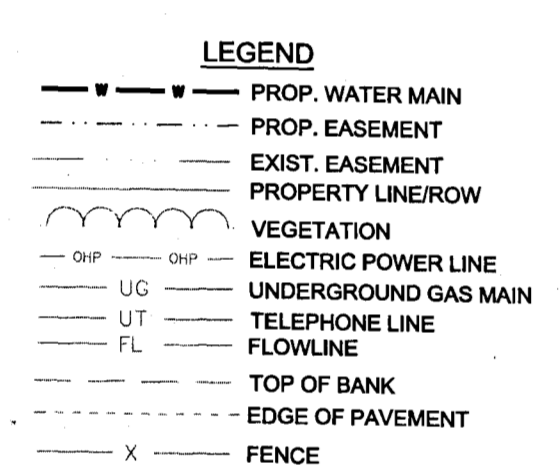
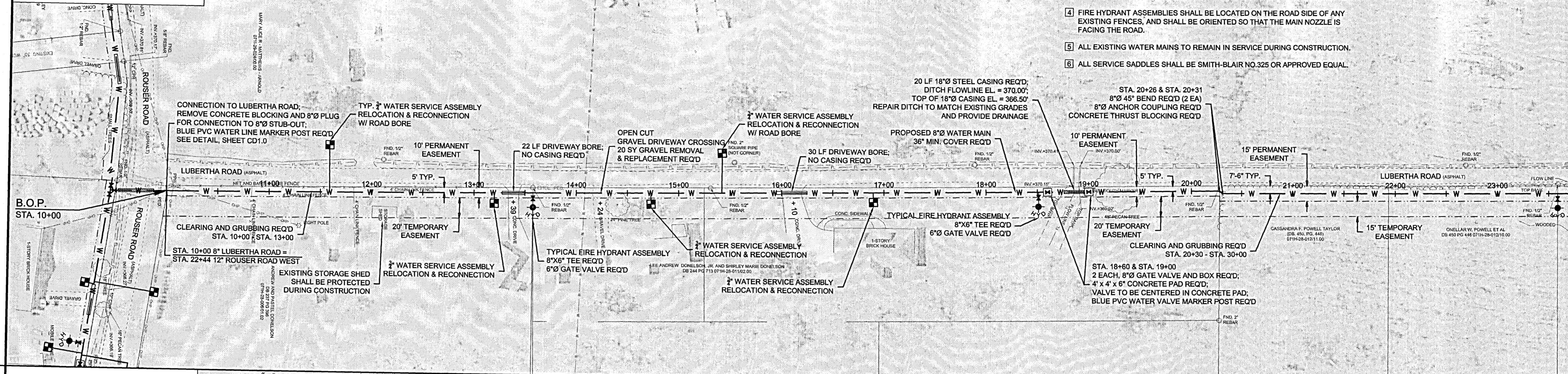


- NOTE:**
- IT SHALL BE THE RESPONSIBILITY OF THE CONTRACTOR TO COORDINATE ALL UTILITY RELOCATIONS WITH THE APPROPRIATE UTILITY COMPANY. UTILITY RELOCATIONS WILL BE CONSIDERED AN ABSORBED ITEM.
 - WATER MAINS WILL NOT BE CONSIDERED ELIGIBLE FOR PAYMENT UNTIL THE TRENCH HAS BEEN BACKFILLED AND THE ORIGINAL SURFACE HAS BEEN RESTORED TO THE FULL SATISFACTION OF THE ENGINEER.
 - ANCHOR COUPLINGS AND MEGA-LUGS (ABSORBED ITEM) ARE REQUIRED AT ALL DUCTILE IRON FITTING CONNECTION POINTS AND AT TEE/VALVE CONNECTIONS.
 - FIRE HYDRANT ASSEMBLIES SHALL BE LOCATED ON THE ROAD SIDE OF ANY EXISTING FENCES, AND SHALL BE ORIENTED SO THAT THE MAIN NOZZLE IS FACING THE ROAD.
 - ALL EXISTING WATER MAINS TO REMAIN IN SERVICE DURING CONSTRUCTION.
 - ALL SERVICE SADDLES SHALL BE SMITH-BLAIR NO.325 OR APPROVED EQUAL.



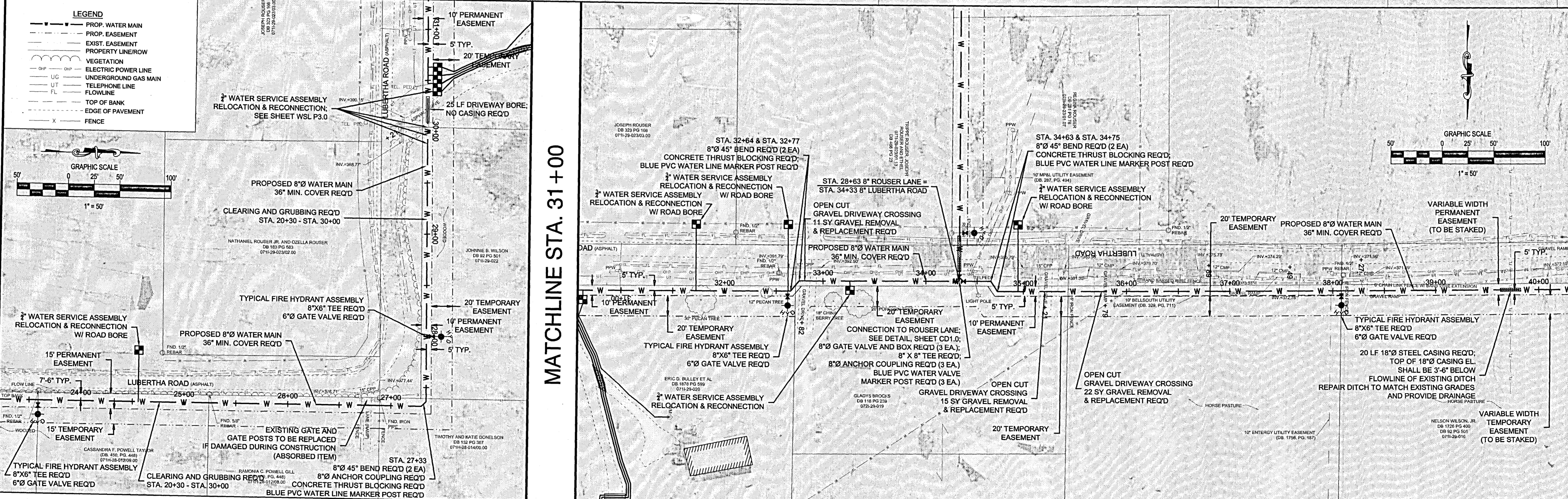
B.O.P. STA. 10+00

MATCHLINE STA. 23+50



MATCHLINE STA. 23+50

MATCHLINE STA. 40+00

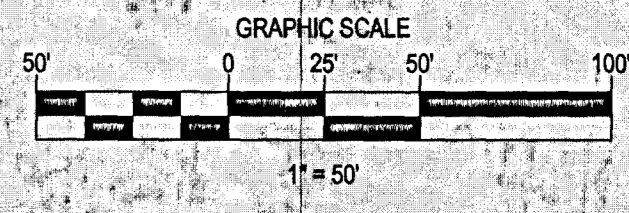


P:\060018 AC\Western Water\06018C_Con\DWG\06018C_Con\DWG\06018C_Connect_Lines_PP_ORIGINAL.DWG, 5/18/2012 2:24:58 PM, lgalbraun\l\06018C

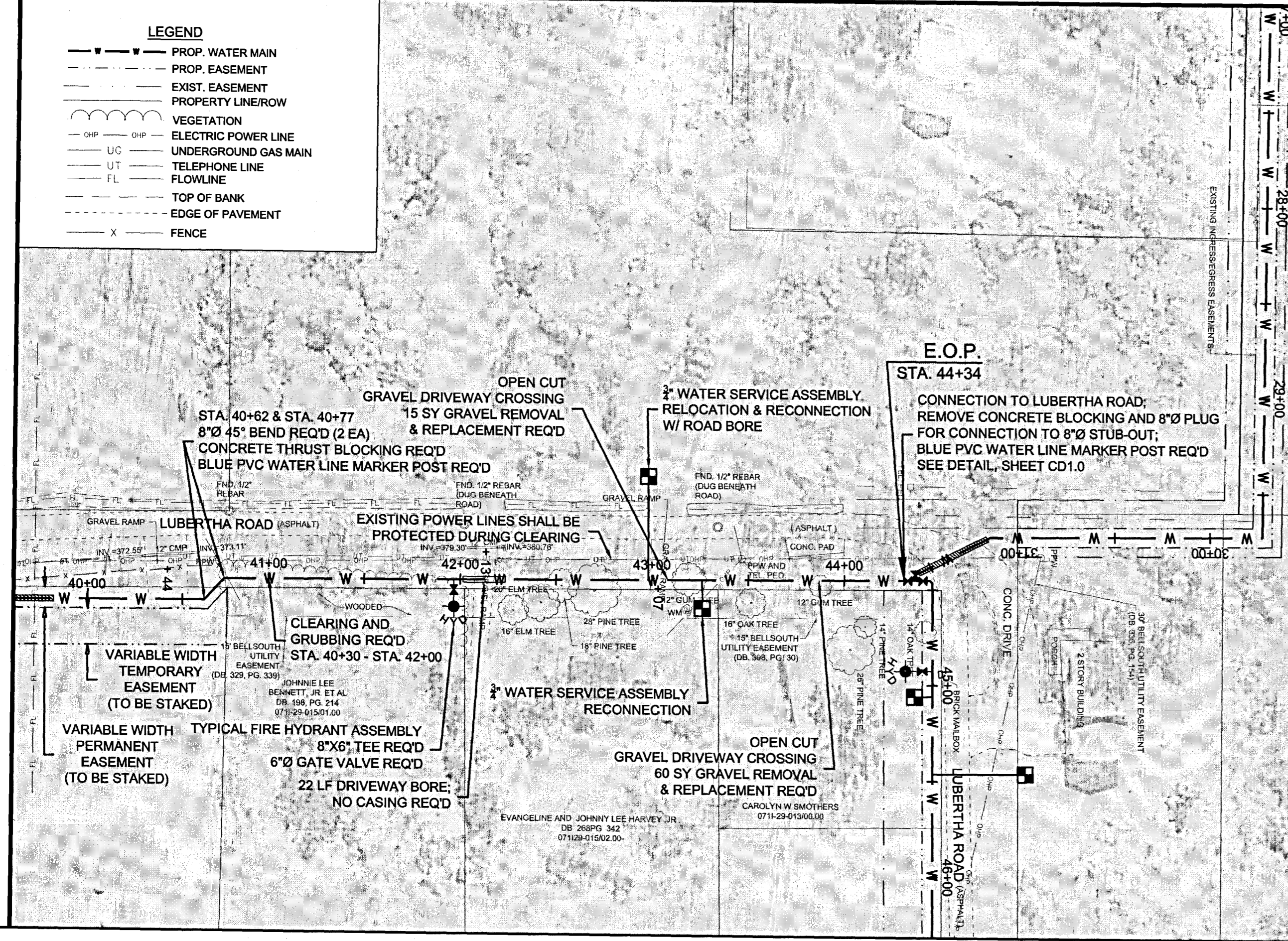
NO.	DATE	REVISIONS	DESIGNED BY: CWB	DATE: April 2012	HORIZ. SCALE: 1"=50'	<p>143-A LeFleurs Square JACKSON, MS 39211 601-355-9526 FAX 601-352-3945</p>	<p>WESTERN WATER SYSTEM IMPROVEMENTS PHASE III WATER CONNECTOR LINES CITY OF RIDGELAND, MS</p>	<p>LUBERTHA ROAD WATER MAIN PLAN VIEW (BASE BID - STA.10+00 TO STA.40+00)</p>	SHEET NUMBER:
			CHECKED BY: BGC	PROJECT: W06018C	N/A				LBR P1.0
			BY: CTK						

LEGEND

---	PROP. WATER MAIN
---	PROP. EASEMENT
---	EXIST. EASEMENT
---	PROPERTY LINE/ROW
---	VEGETATION
---	ELECTRIC POWER LINE
---	UNDERGROUND GAS MAIN
---	UT TELEPHONE LINE
---	FL FLOWLINE
---	TOP OF BANK
---	EDGE OF PAVEMENT
X	FENCE



MATCHLINE STA. 40+00



- NOTE:**
- 1 IT SHALL BE THE RESPONSIBILITY OF THE CONTRACTOR TO COORDINATE ALL UTILITY RELOCATIONS WITH THE APPROPRIATE UTILITY COMPANY. UTILITY RELOCATIONS WILL BE CONSIDERED AN ABSORBED ITEM.
 - 2 WATER MAINS WILL NOT BE CONSIDERED ELIGIBLE FOR PAYMENT UNTIL THE TRENCH HAS BEEN BACKFILLED AND THE ORIGINAL SURFACE HAS BEEN RESTORED TO THE FULL SATISFACTION OF THE ENGINEER.
 - 3 ANCHOR COUPLINGS AND MEGA-LUGS (ABSORBED ITEM) ARE REQUIRED AT ALL DUCTILE IRON FITTING CONNECTION POINTS AND AT TEE/VALVE CONNECTIONS.
 - 4 FIRE HYDRANT ASSEMBLIES SHALL BE LOCATED ON THE ROAD SIDE OF ANY EXISTING FENCES, AND SHALL BE ORIENTED SO THAT THE MAIN NOZZLE IS FACING THE ROAD.
 - 5 ALL EXISTING WATER MAINS TO REMAIN IN SERVICE DURING CONSTRUCTION.
 - 6 ALL SERVICE SADDLES SHALL BE SMITH-BLAIR NO.325 OR APPROVED EQUAL.

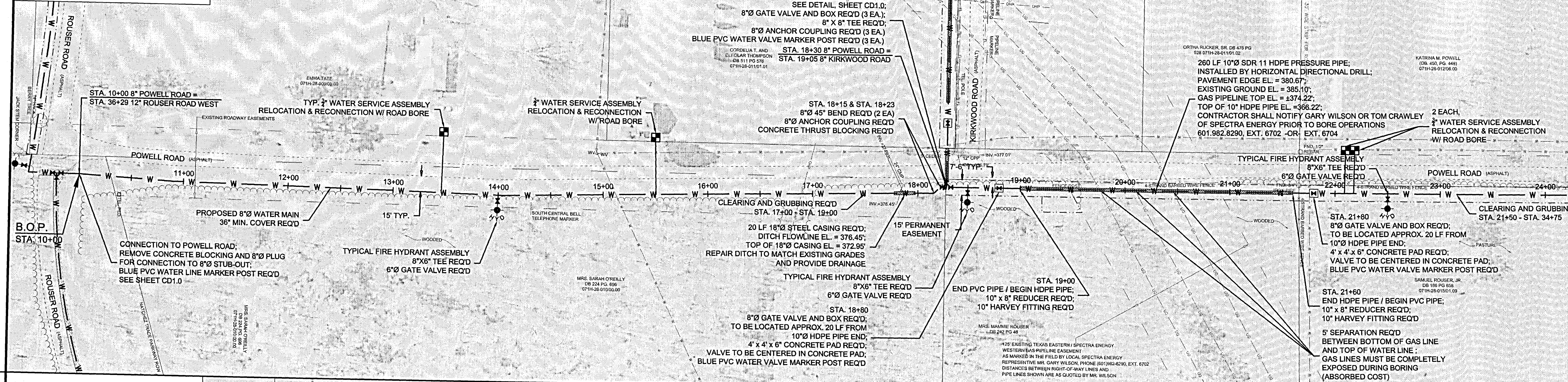
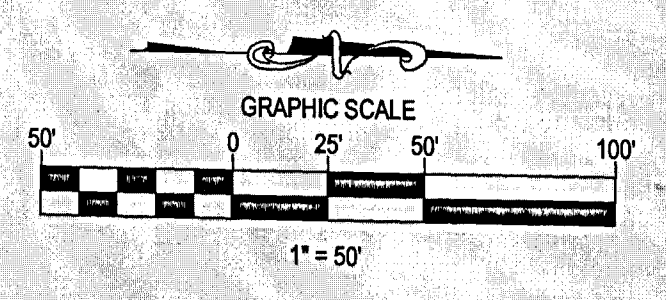
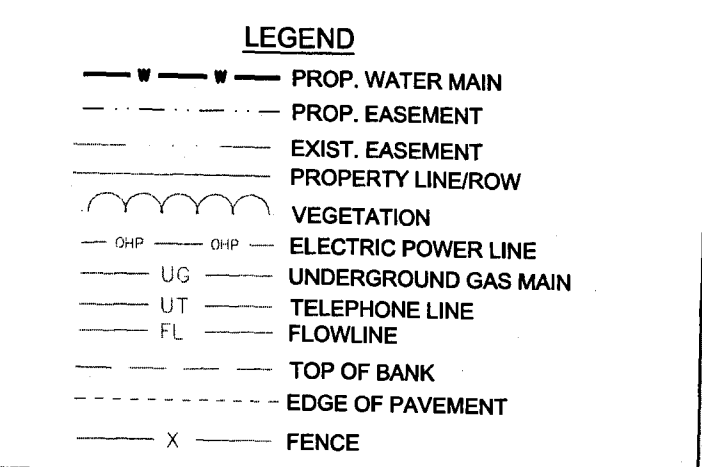
E.O.P. STA. 44+34

		DRAWN BY: CWB	DATE: April 2012	HORZ. SCALE: 1"=50'	 143-A Lefleurs Square JACKSON, MS 39211 601-355-9526 FAX 601-352-3945	WESTERN WATER SYSTEM IMPROVEMENTS PHASE III WATER CONNECTOR LINES CITY OF RIDGELAND, MS	LUBERTHA ROAD WATER MAIN PLAN VIEW (BASE BID - STA. 40+00 TO STA. 44+34)	SHEET NUMBER:
		DESIGNED BY: BGG	PROJECT: W06018C	VERT. SCALE: N/A				
NO.	DATE	BY	CHECKED BY: CTK					

P:\06018 AC Western Water\W06018C_Connectors\W06018C_Connectors_Lines_PP_ORIGINAL.DWG, 5/16/2012 2:28:09 PM, jpr@wagner.com

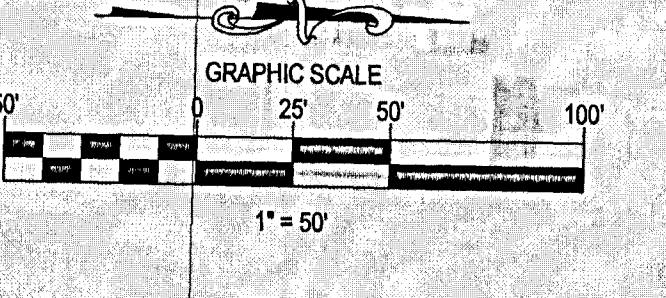
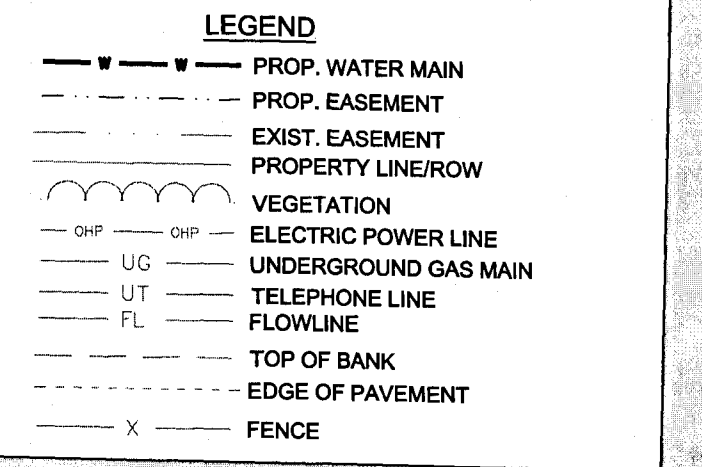
B.O.P. STA. 10+00

MATCHLINE STA. 24+50

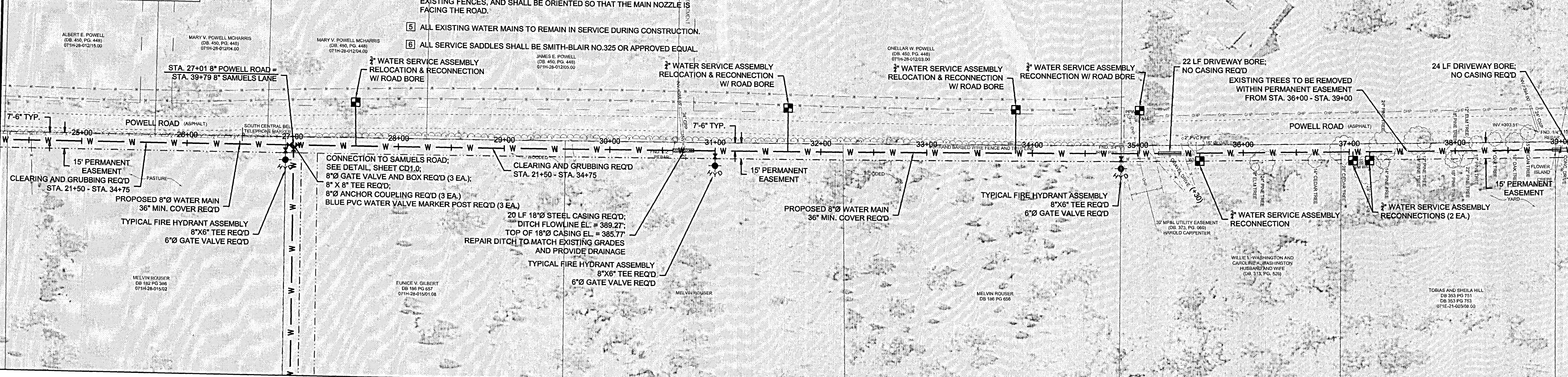


MATCHLINE STA. 24+50

MATCHLINE STA. 39+00



- NOTE:**
- IT SHALL BE THE RESPONSIBILITY OF THE CONTRACTOR TO COORDINATE ALL UTILITY RELOCATIONS WITH THE APPROPRIATE UTILITY COMPANY. UTILITY RELOCATIONS WILL BE CONSIDERED AN ABSORBED ITEM.
 - WATER MAINS WILL NOT BE CONSIDERED ELIGIBLE FOR PAYMENT UNTIL THE TRENCH HAS BEEN BACKFILLED AND THE ORIGINAL SURFACE HAS BEEN RESTORED TO THE FULL SATISFACTION OF THE ENGINEER.
 - ANCHOR COUPLINGS AND MEGA-LUGS (ABSORBED ITEM) ARE REQUIRED AT ALL DUCTILE IRON FITTING CONNECTION POINTS AND AT TEE/VALVE CONNECTIONS.
 - FIRE HYDRANT ASSEMBLIES SHALL BE LOCATED ON THE ROAD SIDE OF ANY EXISTING FENCES, AND SHALL BE ORIENTED SO THAT THE MAIN NOZZLE IS FACING THE ROAD.
 - ALL EXISTING WATER MAINS TO REMAIN IN SERVICE DURING CONSTRUCTION.
 - ALL SERVICE SADDLES SHALL BE SMITH-BLAIR NO.325 OR APPROVED EQUAL.



NO.	DATE	REVISIONS	BY	DATE	HORIZ. SCALE	VERT. SCALE	DESIGNED BY	CHECKED BY	DATE	PROJECT	PROJECT NO.	SHEET NUMBER
				April 2012	1"=50'	N/A	CWB	CTK		WESTERN WATER SYSTEM IMPROVEMENTS PHASE III WATER CONNECTOR LINES CITY OF RIDGELAND, MS	143-A LeFleurs Square JACKSON, MS 39211 601-355-9526 FAX 601-352-3945	PR P1.0

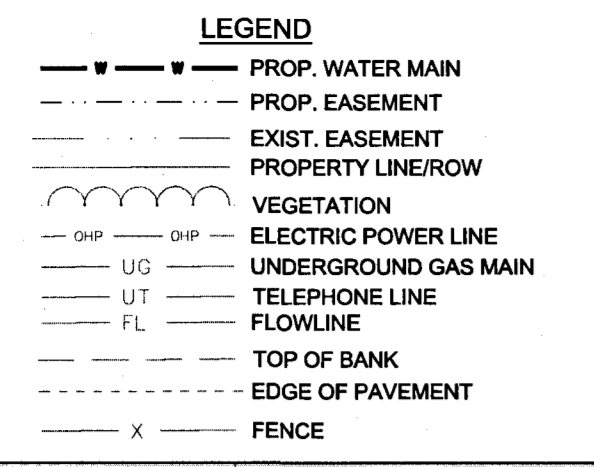


POWELL ROAD WATER MAIN PLAN VIEW
(BASE BID - STA.10+00 TO STA.39+00)

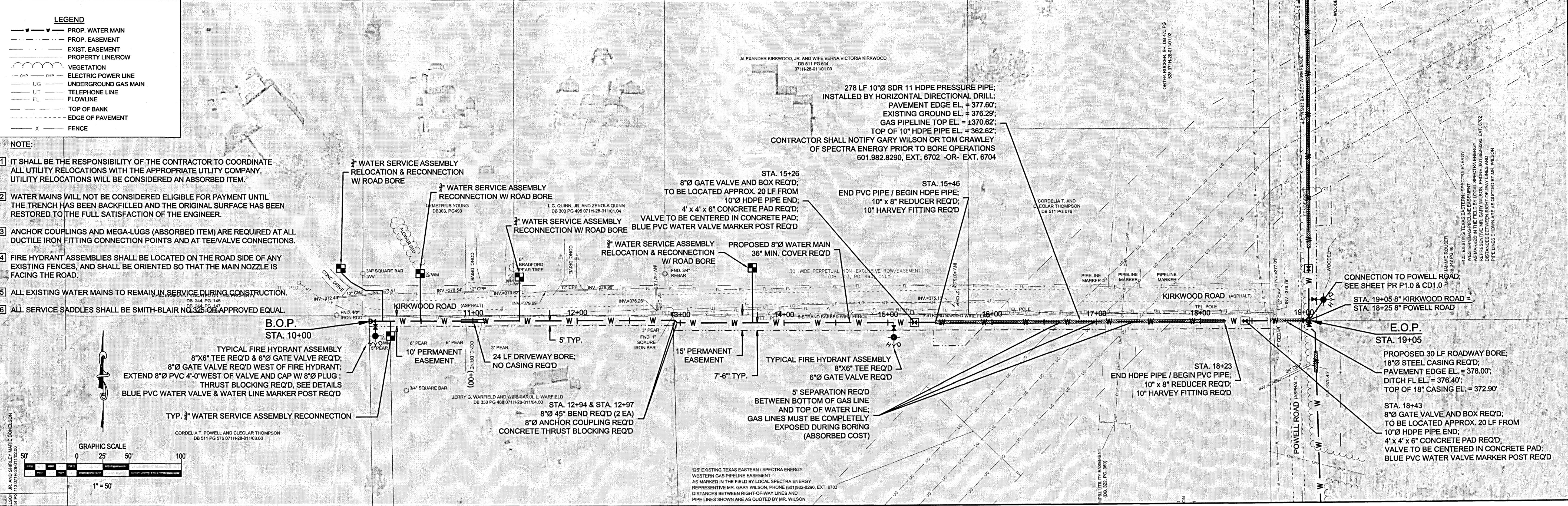
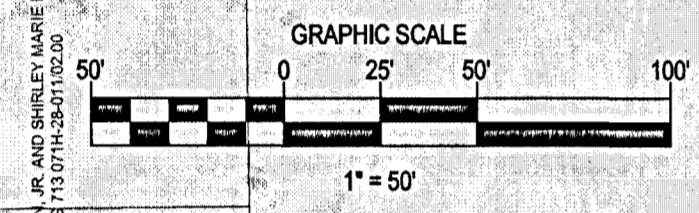
P:\060618 AC\Heldam\Heldam\060618 AC\Drawings\060618 Connect_Lines PP_ORIGINAL.DWG, 5/16/2012 2:27:37 PM, WWS\Drawings\060618

B.O.P. STA. 10+00

E.O.P. STA. 19+05



- NOTE:**
- 1 IT SHALL BE THE RESPONSIBILITY OF THE CONTRACTOR TO COORDINATE ALL UTILITY RELOCATIONS WITH THE APPROPRIATE UTILITY COMPANY. UTILITY RELOCATIONS WILL BE CONSIDERED AN ABSORBED ITEM.
 - 2 WATER MAINS WILL NOT BE CONSIDERED ELIGIBLE FOR PAYMENT UNTIL THE TRENCH HAS BEEN BACKFILLED AND THE ORIGINAL SURFACE HAS BEEN RESTORED TO THE FULL SATISFACTION OF THE ENGINEER.
 - 3 ANCHOR COUPLINGS AND MEGA-LUGS (ABSORBED ITEM) ARE REQUIRED AT ALL DUCTILE IRON FITTING CONNECTION POINTS AND AT TEE/VALVE CONNECTIONS.
 - 4 FIRE HYDRANT ASSEMBLIES SHALL BE LOCATED ON THE ROAD SIDE OF ANY EXISTING FENCES, AND SHALL BE ORIENTED SO THAT THE MAIN NOZZLE IS FACING THE ROAD.
 - 5 ALL EXISTING WATER MAINS TO REMAIN IN SERVICE DURING CONSTRUCTION.
 - 6 ALL SERVICE SADDLES SHALL BE SMITH-BLAIR NO. 325 OR APPROVED EQUAL.

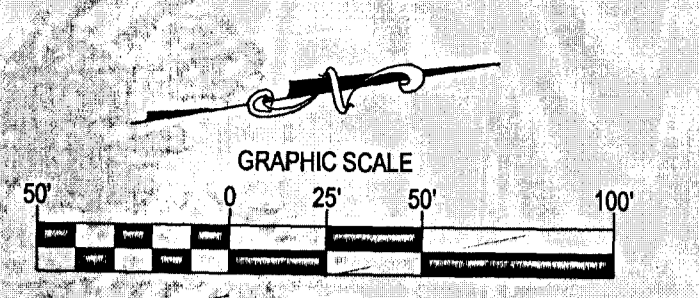


NO. DATE		REVISIONS		DRAWN BY: CWB DESIGNED BY: BGG CHECKED BY: OTK	DATE: April 2012 PROJECT: W06018C	HORIZ. SCALE: 1"=50' VERT. SCALE: N/A		143-A LeFleurs Square JACKSON, MS 39211 601-355-9526 FAX 601-352-3945	WESTERN WATER SYSTEM IMPROVEMENTS PHASE III WATER CONNECTOR LINES CITY OF RIDGLAND, MS	KIRKWOOD ROAD WATER MAIN PLAN VIEW (BASE BID - STA.10+00 TO STA.19+05)	SHEET NUMBER: KR P1.0
----------	--	-----------	--	------------------------------------------------------	--------------------------------------	------------------------------------------	--	--------------------------------------------------------------------------------	----------------------------------------------------------------------------------------------	---------------------------------------------------------------------------	---------------------------------

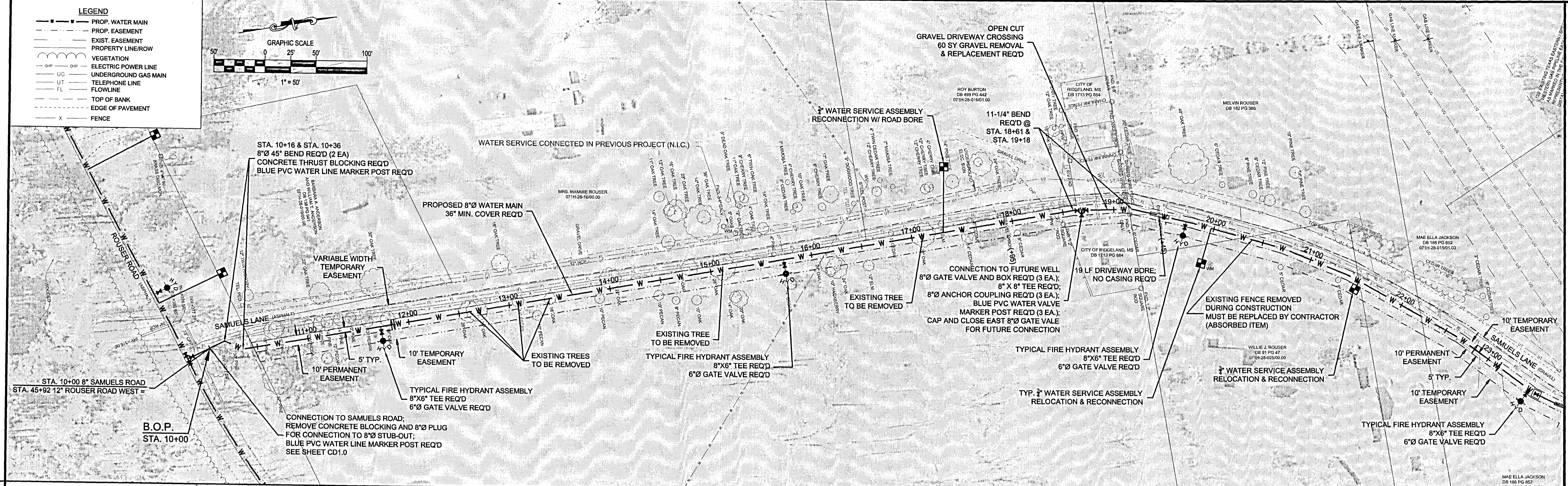
P:\Ridglnd_City\W06018 AC Western Water\W06018C_Contract\W06018C_Contract_Line_PP_ORIGINAL.DWG, 5/16/2012 2:23:32 PM, lptelnew\cwb 105880

LEGEND

- PROP. WATER MAIN
- PROP. EASEMENT
- EXIST. EASEMENT
- PROPERTY LINE/ROW
- VEGETATION
- E.P. ELECTRIC POWER LINE
- UG UNDERGROUND GAS MAIN
- UT TELEPHONE LINE
- FL FLOWLINE
- TOP OF BANK
- EDGE OF PAVEMENT
- X FENCE



B.O.P. STA. 10+00



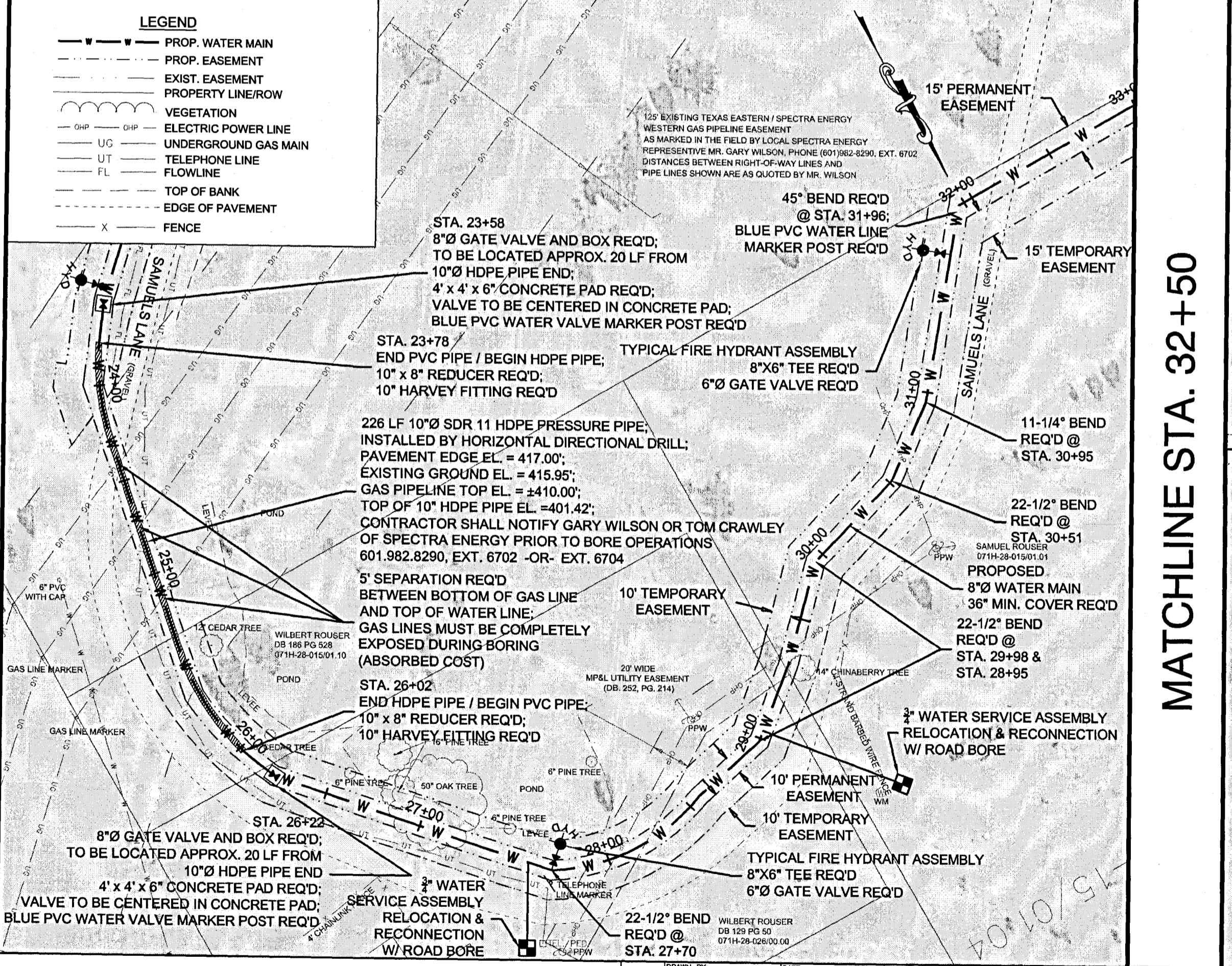
MATCHLINE STA. 23+50

LEGEND

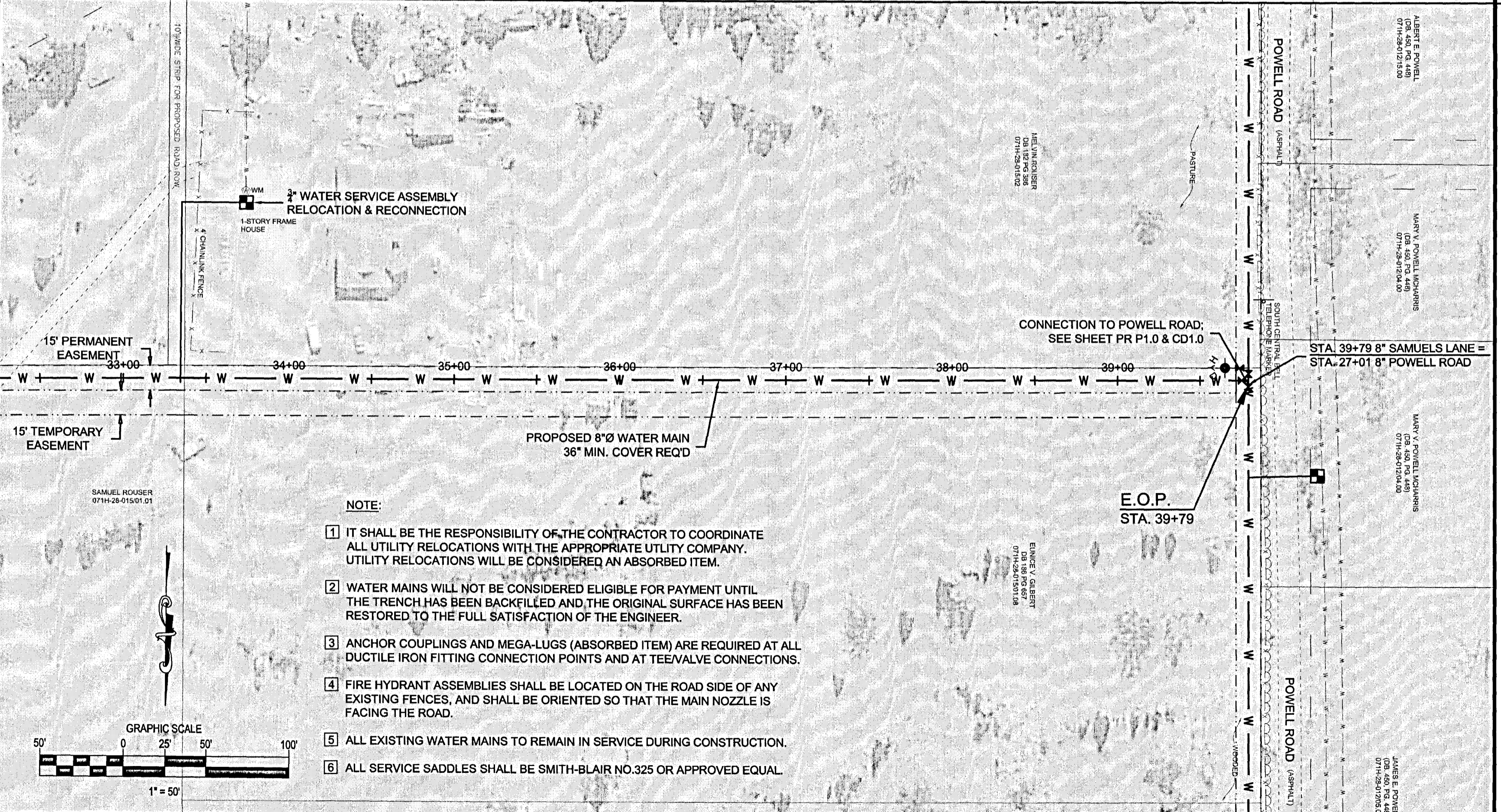
- PROP. WATER MAIN
- PROP. EASEMENT
- EXIST. EASEMENT
- PROPERTY LINE/ROW
- VEGETATION
- E.P. ELECTRIC POWER LINE
- UG UNDERGROUND GAS MAIN
- UT TELEPHONE LINE
- FL FLOWLINE
- TOP OF BANK
- EDGE OF PAVEMENT
- X FENCE



MATCHLINE STA. 23+50



MATCHLINE STA. 32+50



MATCHLINE STA. 39+79

- NOTE:**
- 1 IT SHALL BE THE RESPONSIBILITY OF THE CONTRACTOR TO COORDINATE ALL UTILITY RELOCATIONS WITH THE APPROPRIATE UTILITY COMPANY. UTILITY RELOCATIONS WILL BE CONSIDERED AN ABSORBED ITEM.
 - 2 WATER MAINS WILL NOT BE CONSIDERED ELIGIBLE FOR PAYMENT UNTIL THE TRENCH HAS BEEN BACKFILLED AND THE ORIGINAL SURFACE HAS BEEN RESTORED TO THE FULL SATISFACTION OF THE ENGINEER.
 - 3 ANCHOR COUPLINGS AND MEGA-LUGS (ABSORBED ITEM) ARE REQUIRED AT ALL DUCTILE IRON FITTING CONNECTION POINTS AND AT TEE/WALVE CONNECTIONS.
 - 4 FIRE HYDRANT ASSEMBLIES SHALL BE LOCATED ON THE ROAD SIDE OF ANY EXISTING FENCES, AND SHALL BE ORIENTED SO THAT THE MAIN NOZZLE IS FACING THE ROAD.
 - 5 ALL EXISTING WATER MAINS TO REMAIN IN SERVICE DURING CONSTRUCTION.
 - 6 ALL SERVICE SADDLES SHALL BE SMITH-BLAIR NO.325 OR APPROVED EQUAL.

NO.	DATE	REVISIONS

DRAWN BY:	CWB	DATE:	April 2012	HORIZ. SCALE:	1" = 50'
DESIGNED BY:	BGG	PROJECT:	W06018C	VERT. SCALE:	N/A
CHECKED BY:	CTK				



143-A LeFleurs Square
JACKSON, MS 39211
601-355-9526
FAX 601-352-3945

WESTERN WATER SYSTEM IMPROVEMENTS
PHASE III WATER CONNECTOR LINES
CITY OF RIDGELAND, MS

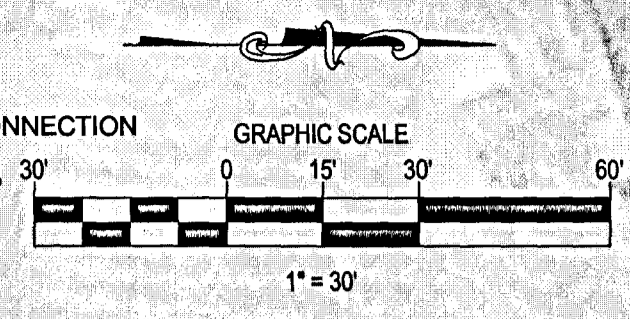
SAMUELS LANE WATER MAIN PLAN VIEW
(BASE BID - STA. 10+00 TO STA. 39+79)

SHEET NUMBER:
SL P1.0

P:\Projects\City of Ridgeland\AC Western Water\W06018C_Connectors\W06018C_Connectors_Line_P1_ORIGINAL.DWG, 5/16/2012 2:34:35 PM, gregnew@waggoner.com

LEGEND

- PROP. WATER MAIN
- PROP. EASEMENT
- EXIST. EASEMENT
- PROPERTY LINE/ROW
- VEGETATION
- CHP — OHP — ELECTRIC POWER LINE
- UG — UNDERGROUND GAS MAIN
- UT — TELEPHONE LINE
- FL — FLOWLINE
- TOP OF BANK
- EDGE OF PAVEMENT
- FENCE



2 EACH, 1"Ø HDPE SERVICE LINE TO EXISTING SERVICE ASSEMBLY LOCATION
 INSTALLED INSIDE GRASS PATHWAY;
 MINIMUM TRENCH WIDTH = 12-INCHES, MAXIMUM TRENCH WIDTH = 24-INCHES;
 STANDARD MINIMUM CLEARANCE FOR UNDERGROUND SERVICE LINE
 SHALL BE 4-INCHES FROM ANY OTHER SERVICE LINE, PIPE, OR OTHER STRUCTURE
 SEE DETAIL, SHEET WD1.0;
 SERVICE LINES SHALL BE SEPARATED USING TREATED 2 x 4 WOODEN STAKES.
 ALL HDPE SERVICE LINE, FITTINGS, AND INCIDENTAL COSTS SHALL BE INCLUDED IN PAY ITEM:
 "1" HDPE SERVICE LINE"

3/4" SERVICE ASSEMBLY RECONNECTION
 ANY INCIDENTAL FITTINGS FOR 3/4" x 1" CONNECTION
 SHALL BE INCLUDED IN PAY ITEM:
 "3/4" SERVICE ASSEMBLY RECONNECTION"

3/4" SERVICE ASSEMBLY RECONNECTION
 ANY INCIDENTAL FITTINGS FOR 3/4" x 1" CONNECTION
 SHALL BE INCLUDED IN PAY ITEM:
 "3/4" SERVICE ASSEMBLY RECONNECTION"

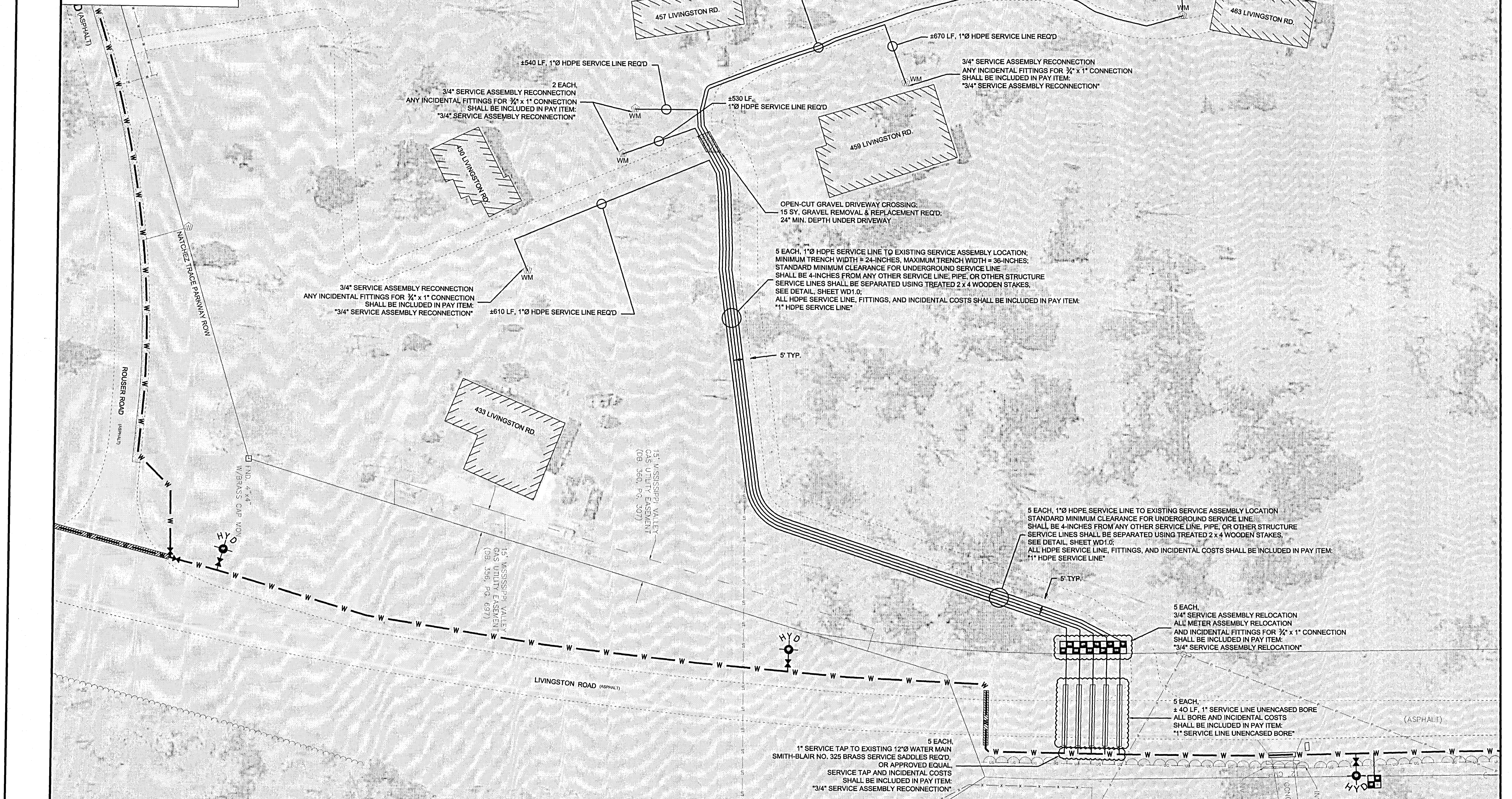
5 EACH, 1"Ø HDPE SERVICE LINE TO EXISTING SERVICE ASSEMBLY LOCATION;
 MINIMUM TRENCH WIDTH = 24-INCHES, MAXIMUM TRENCH WIDTH = 36-INCHES;
 STANDARD MINIMUM CLEARANCE FOR UNDERGROUND SERVICE LINE
 SHALL BE 4-INCHES FROM ANY OTHER SERVICE LINE, PIPE, OR OTHER STRUCTURE
 SERVICE LINES SHALL BE SEPARATED USING TREATED 2 x 4 WOODEN STAKES.
 SEE DETAIL, SHEET WD1.0;
 ALL HDPE SERVICE LINE, FITTINGS, AND INCIDENTAL COSTS SHALL BE INCLUDED IN PAY ITEM:
 "1" HDPE SERVICE LINE"

5 EACH, 1"Ø HDPE SERVICE LINE TO EXISTING SERVICE ASSEMBLY LOCATION
 STANDARD MINIMUM CLEARANCE FOR UNDERGROUND SERVICE LINE
 SHALL BE 4-INCHES FROM ANY OTHER SERVICE LINE, PIPE, OR OTHER STRUCTURE
 SERVICE LINES SHALL BE SEPARATED USING TREATED 2 x 4 WOODEN STAKES.
 SEE DETAIL, SHEET WD1.0;
 ALL HDPE SERVICE LINE, FITTINGS, AND INCIDENTAL COSTS SHALL BE INCLUDED IN PAY ITEM:
 "1" HDPE SERVICE LINE"

5 EACH,
 3/4" SERVICE ASSEMBLY RELOCATION
 ALL METER ASSEMBLY RELOCATION
 AND INCIDENTAL FITTINGS FOR 3/4" x 1" CONNECTION
 SHALL BE INCLUDED IN PAY ITEM:
 "3/4" SERVICE ASSEMBLY RELOCATION"

5 EACH,
 ± 40 LF, 1" SERVICE LINE UNENCASED BORE
 ALL BORE AND INCIDENTAL COSTS
 SHALL BE INCLUDED IN PAY ITEM:
 "1" SERVICE LINE UNENCASED BORE"

1" SERVICE TAP TO EXISTING 12"Ø WATER MAIN
 SMITH-BLAIR NO. 325 BRASS SERVICE SADDLES REQ'D,
 OR APPROVED EQUAL
 SERVICE TAP AND INCIDENTAL COSTS
 SHALL BE INCLUDED IN PAY ITEM:
 "3/4" SERVICE ASSEMBLY RECONNECTION"



NO.	DATE	REVISIONS

DESIGNED BY:	CWB	DATE:	April 2012	HORIZ. SCALE:	1"=30'
CHECKED BY:	BGG	PROJECT:	W06018C	VERT. SCALE:	N/A
BY:	CTK				



143-A LeFleurs Square
 JACKSON, MS 39211
 601-355-9526
 FAX 601-352-3945

WESTERN WATER SYSTEM IMPROVEMENTS
 PHASE III WATER CONNECTOR LINES
 CITY OF RIDGELAND, MS

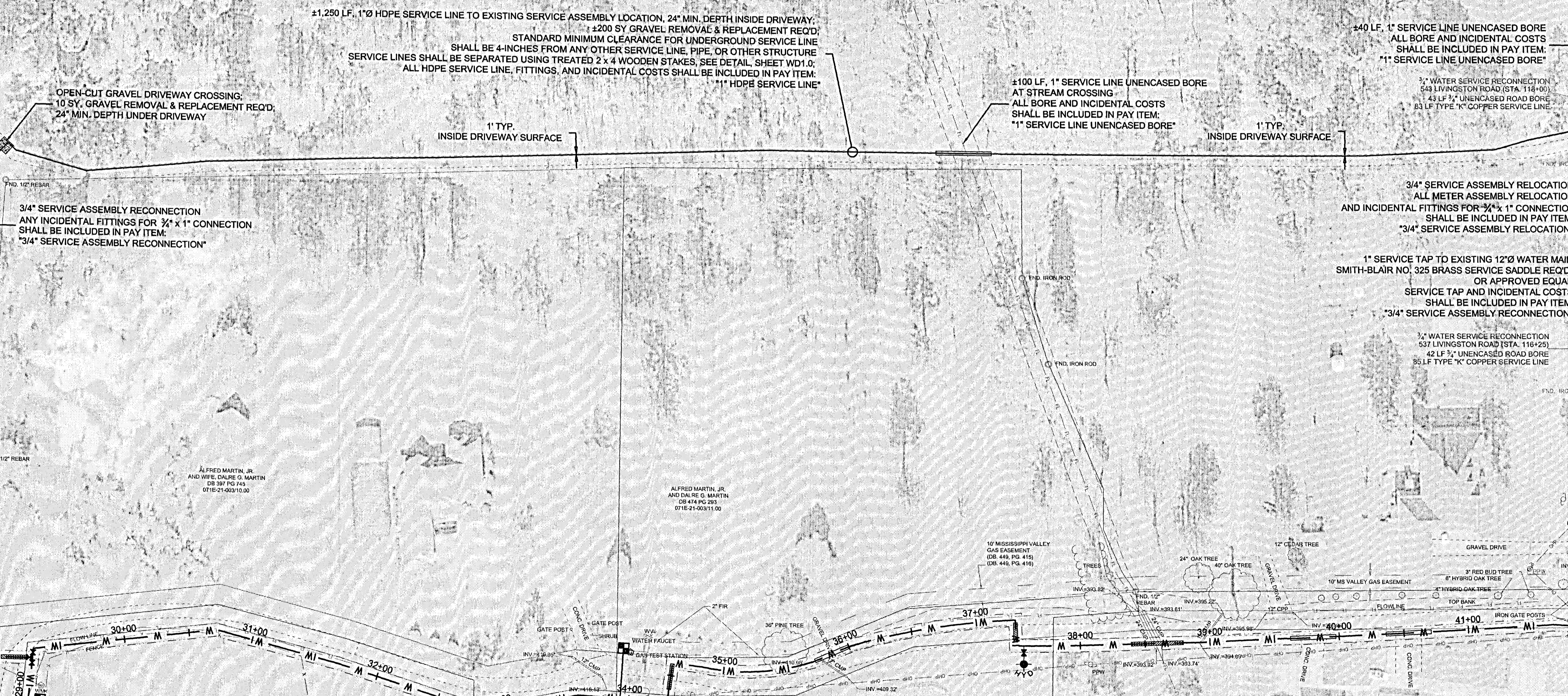
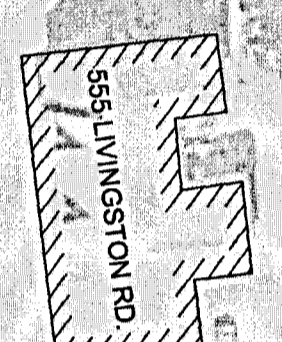
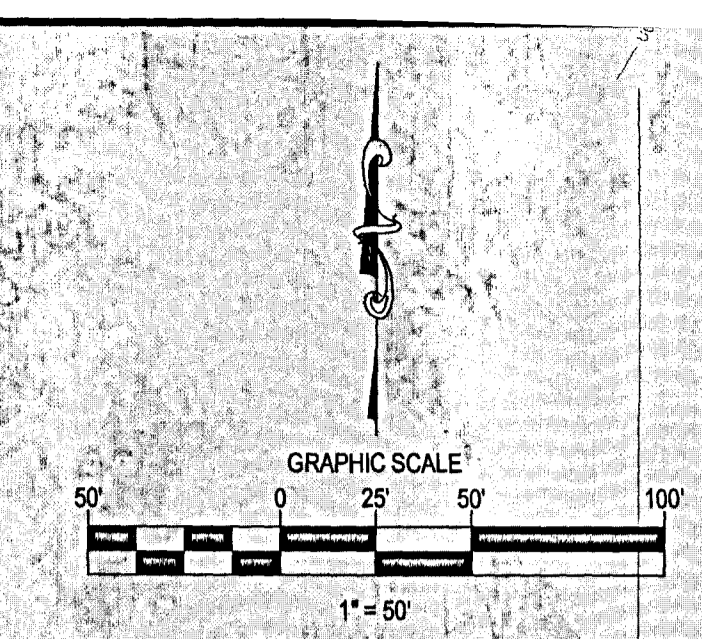
430 - 463 LIVINGSTON ROAD
 WATER SERVICE LINE PLAN VIEW
 (BASE BID)

SHEET NUMBER:
WSL P1.0

P:\Ridgeland_City_4\W06018C_430-463 Livingston Road\W06018C_Connectors_Lines_PP_ORIGINAL.DWG, 5/16/2012 2:27:11 PM, lgriffin\lgriffin

LEGEND

---	PROP. WATER MAIN
---	PROP. EASEMENT
---	EXIST. EASEMENT
---	PROPERTY LINE/ROW
---	VEGETATION
---	ELECTRIC POWER LINE
---	UNDERGROUND GAS MAIN
---	TELEPHONE LINE
---	FLOWLINE
---	TOP OF BANK
---	EDGE OF PAVEMENT
X	FENCE

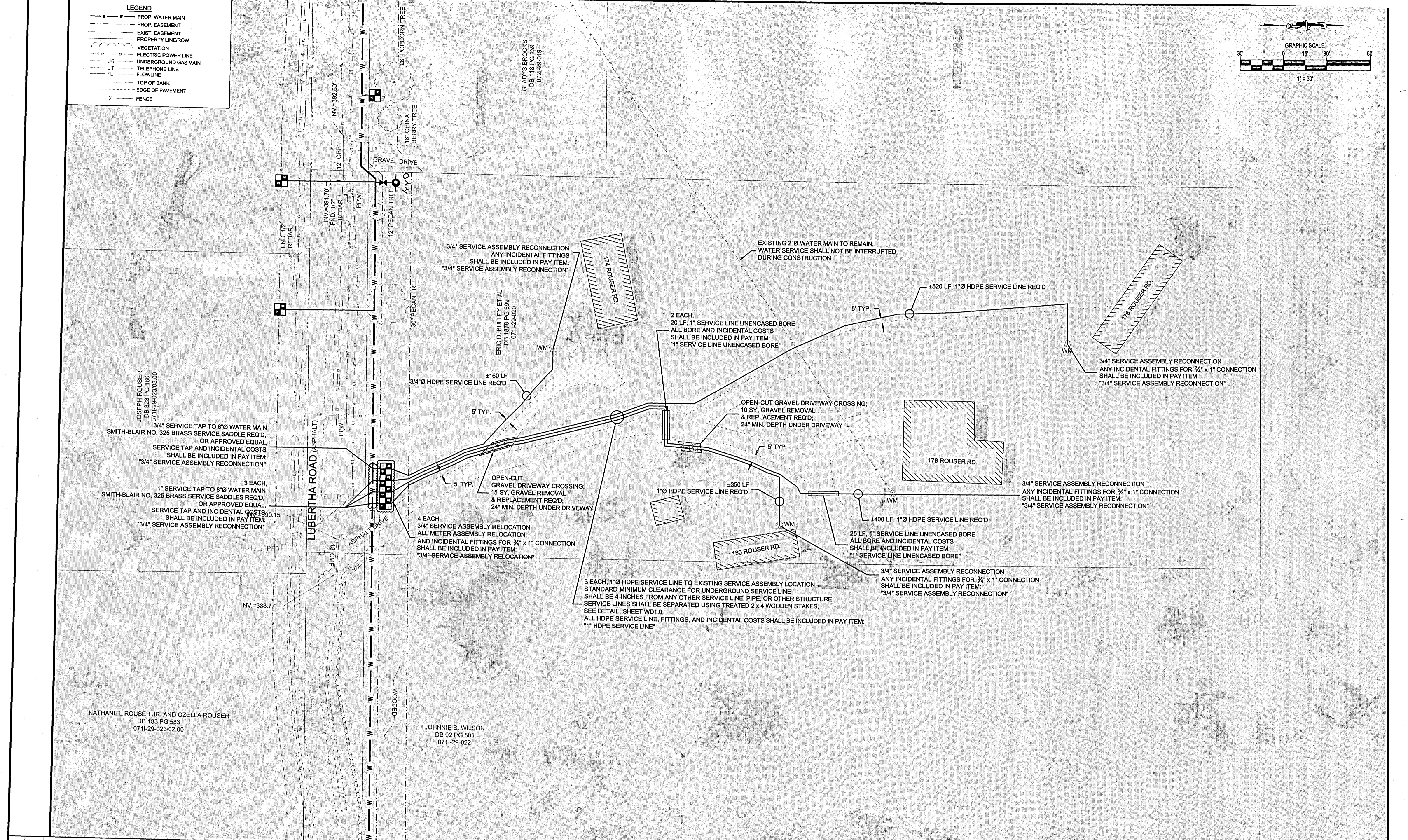
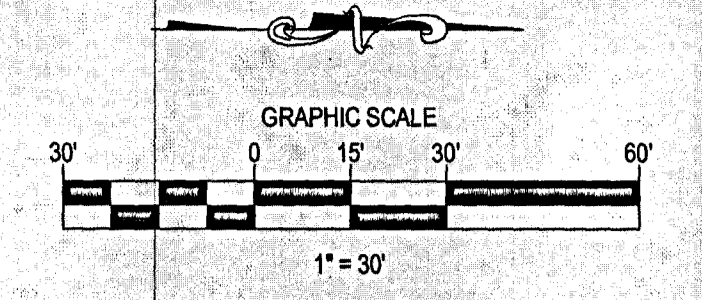


NO.	DATE	REVISIONS	BY	DATE	HORIZ. SCALE		143-A LeFleurs Square JACKSON, MS 39211 601-355-9526 FAX 601-352-3945	WESTERN WATER SYSTEM IMPROVEMENTS PHASE III WATER CONNECTOR LINES CITY OF RIDGELAND, MS	555 LIVINGSTON ROAD WATER SERVICE LINE PLAN VIEW (BASE BID)	SHEET NUMBER: WSL P2.0
			CTK	April 2012	1"=50'					

P:\Ridgeland_City\06018 AC Western Water\06018C Connector Lines PP_ORIGINAL.DWG, 01/05/2012 2:32:21 PM, lynch-new/06018C

LEGEND

- PROP. WATER MAIN
- PROP. EASEMENT
- EXIST. EASEMENT
- PROPERTY LINE/ROW
- VEGETATION
- ELECTRIC POWER LINE
- UG UNDERGROUND GAS MAIN
- UT TELEPHONE LINE
- FL FLOWLINE
- TOP OF BANK
- EDGE OF PAVEMENT
- X FENCE



NO.	DATE	REVISIONS

DESIGNED BY: CWB	DATE: April 2012	HORIZ. SCALE: 1"=30'
CHECKED BY: BGG	PROJECT: W06018C	VERT. SCALE: N/A
BY: CTK		

WAGGONER
 143-A LeFleurs Square
 JACKSON, MS 39211
 601-355-9526
 FAX 601-352-3945

WESTERN WATER SYSTEM IMPROVEMENTS
 PHASE III WATER CONNECTOR LINES
 CITY OF RIDGELAND, MS

174 - 180 LUBERTHA ROAD
WATER SERVICE LINE PLAN VIEW
 (BASE BID)

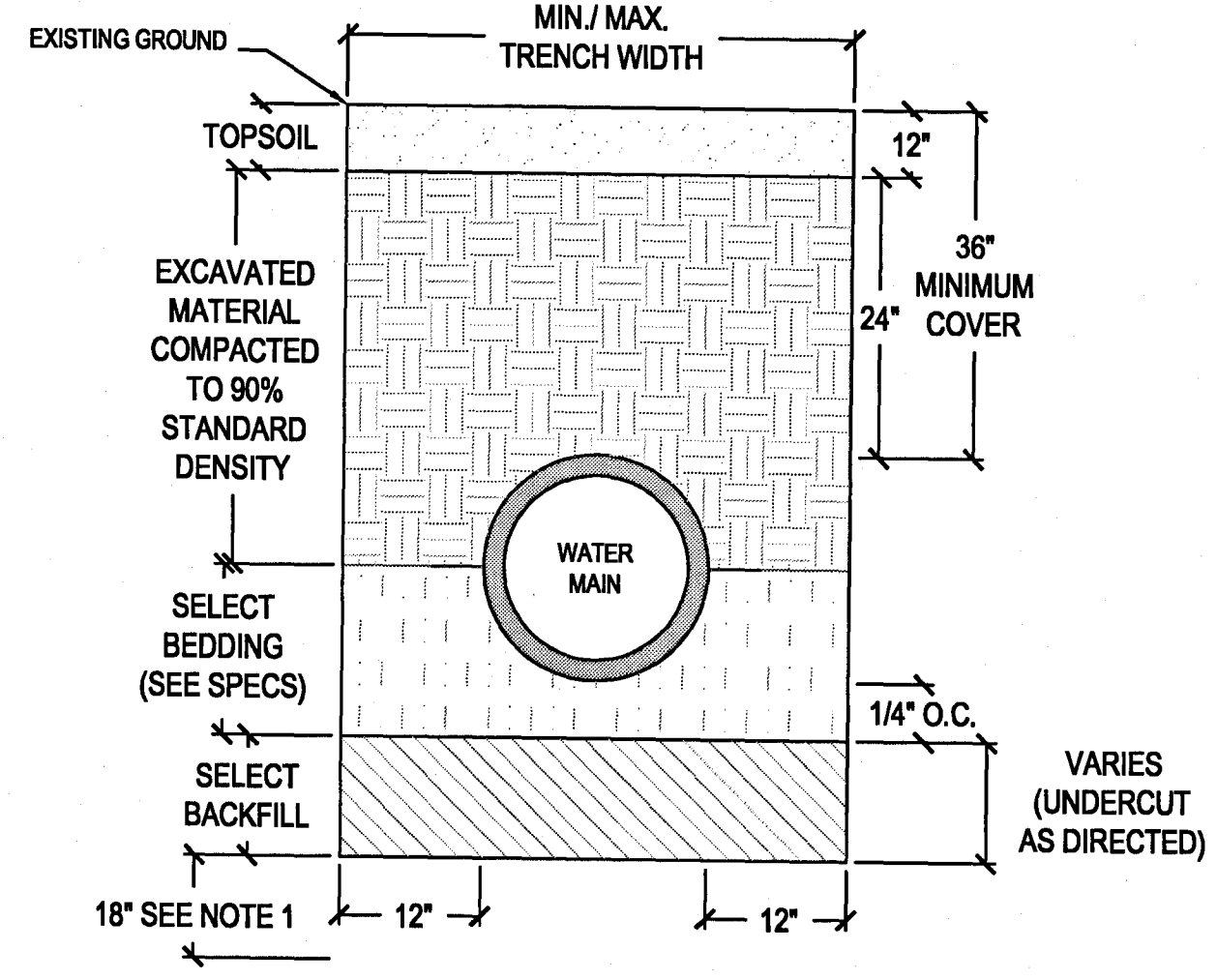
SHEET NUMBER:
WSL P3.0

P:\Ridgeland_City\06018 AC Hseam Water\18018C_Connecting\W06018C_Connect_Lines_PP_ORIGINAL.DWG, 5/16/2012 2:41:53 PM, Update/Conn TDS600

**WESTERN WATER SYSTEM IMPROVEMENTS
 PHASE III WATER CONNECTOR LINES
 CITY OF RIDGELAND, MS**

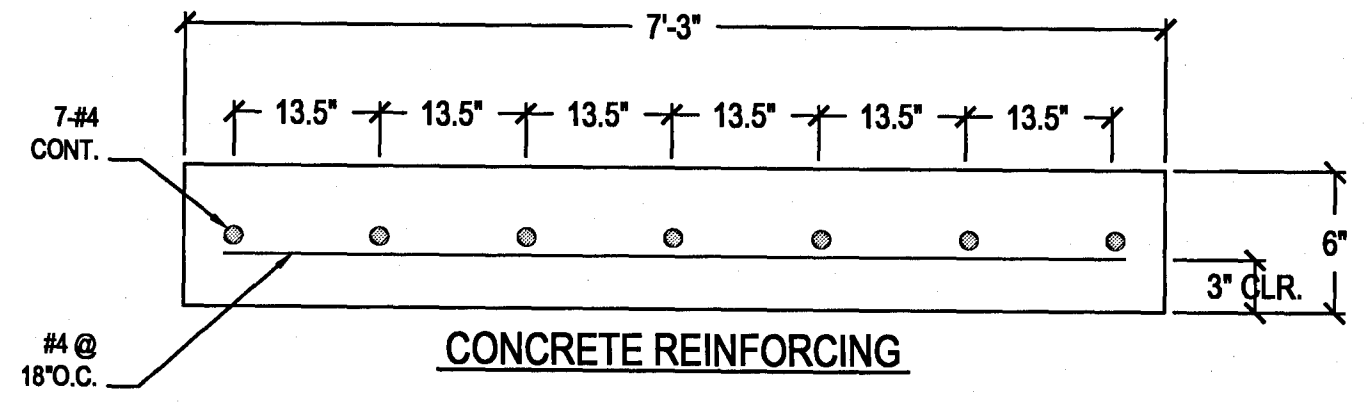
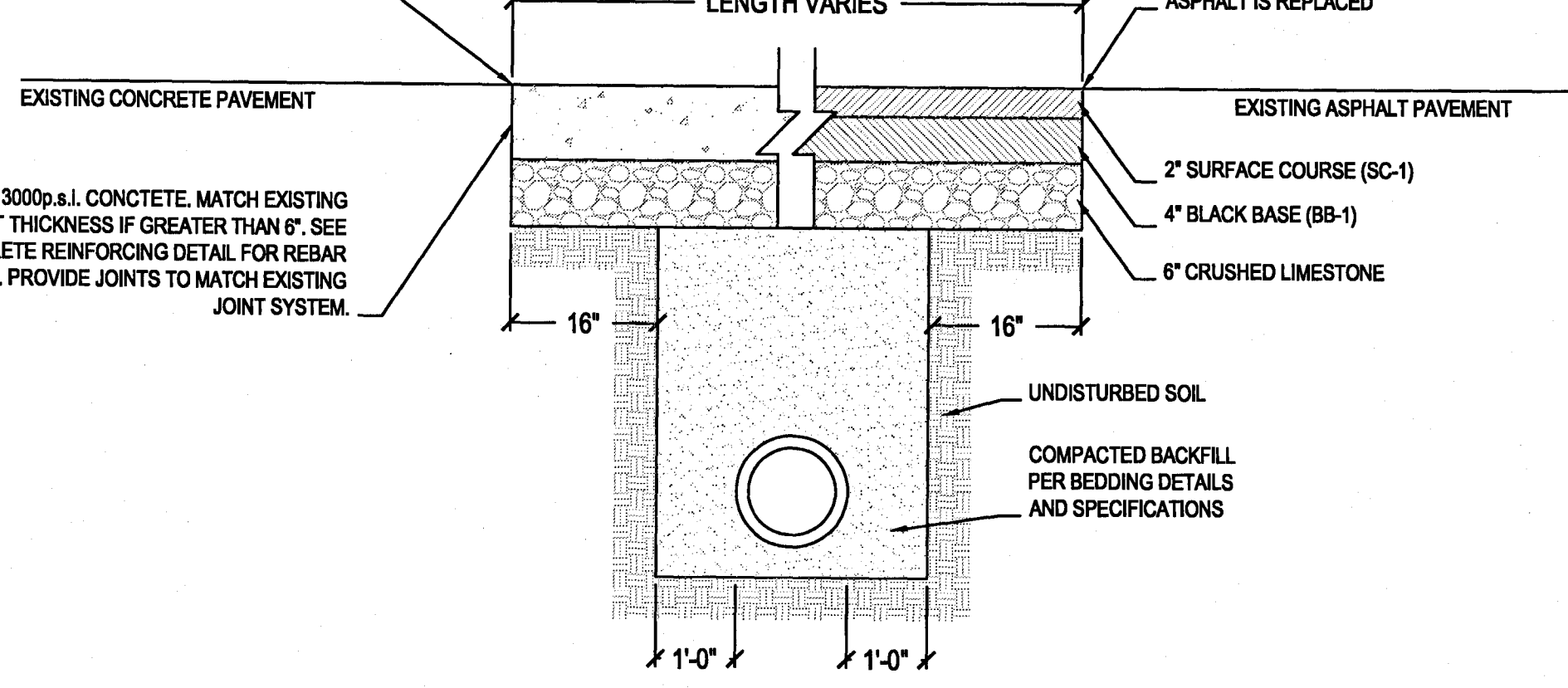
NOTE:

- 1) DEWATERING REQUIRED TO THIS LEVEL (MIN). THE CONTRACTOR SHALL MAINTAIN WATER LEVEL TO A LEVEL OF 18" OR GREATER BELOW THE UNDERCUT DEPTH OR THE TRENCH SUBGRADE, WHICHEVER IS DEEPER, BEFORE PIPE PLACEMENT WILL BE ALLOWED.
- 2) SEE SPECIFICATIONS FOR COMPACTION REQUIREMENTS



TRENCH DETAIL
 SCALE: N.T.S.

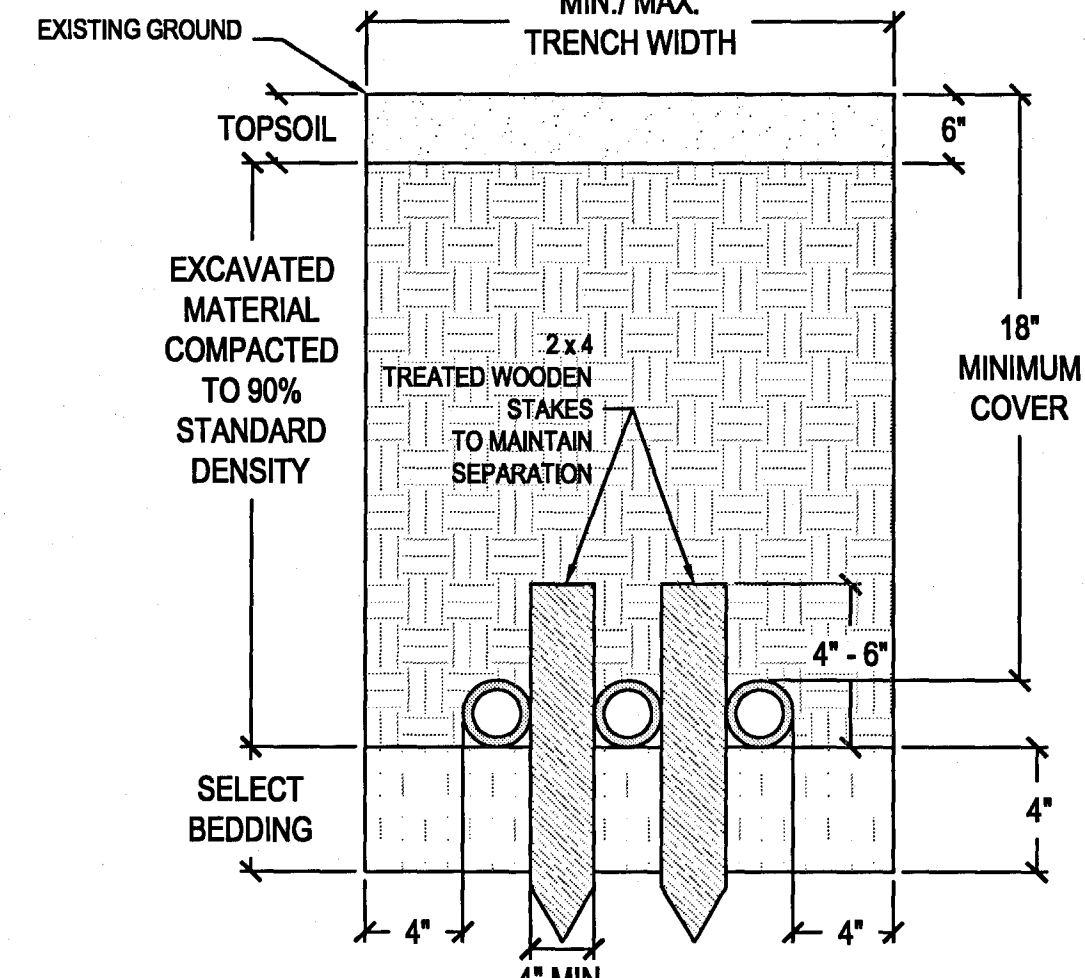
UNIFORM SAW-CUT REQUIRED ALL AROUND. IF PAVEMENT REMOVAL AREA IS LESS THAN 3' FROM AN EXISTING EDGE OR JOINT, REMOVE AND REPLACE THIS AREA ALSO.



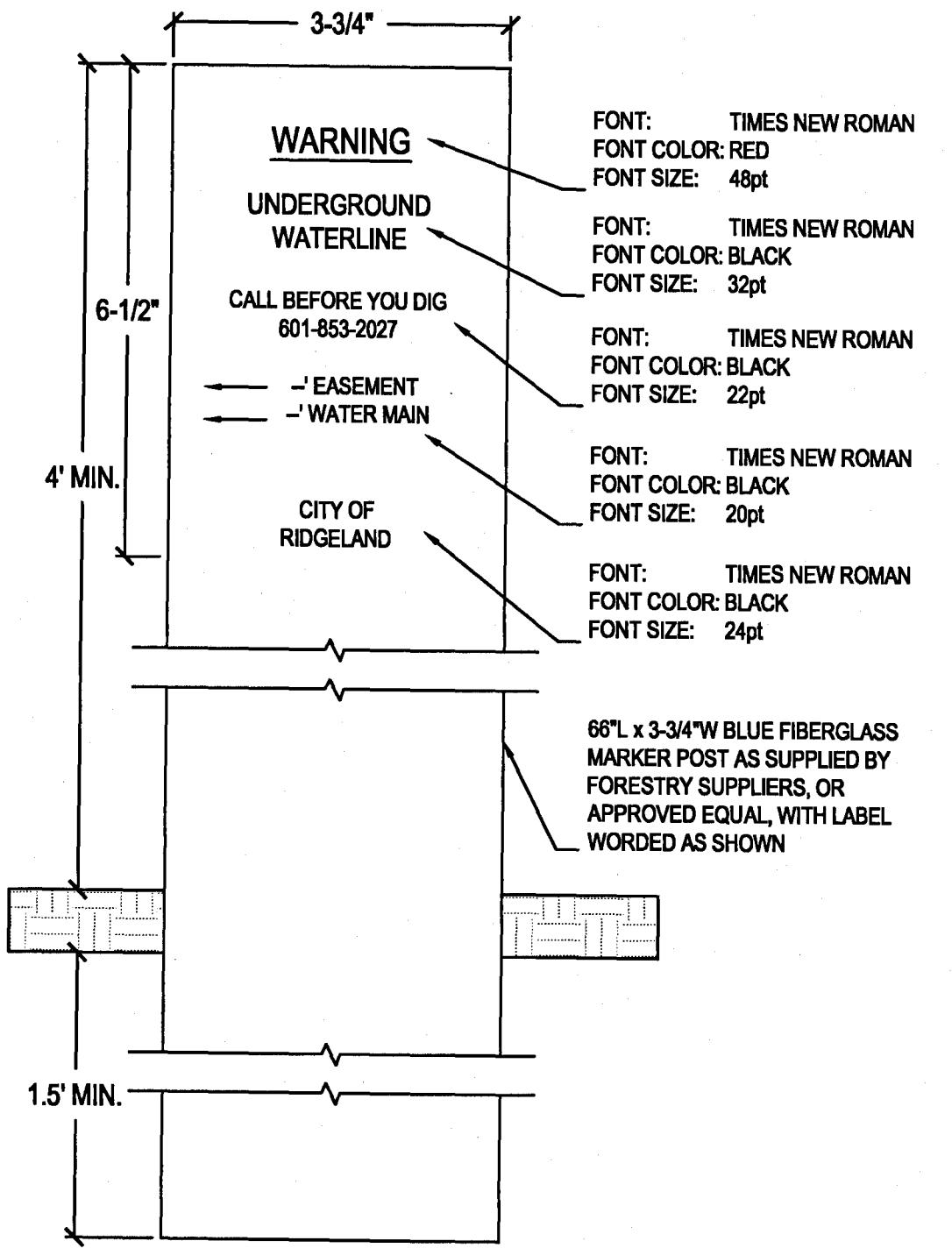
STREET REPAIR OF OPEN CUT
 SCALE: N.T.S.

NOTE:

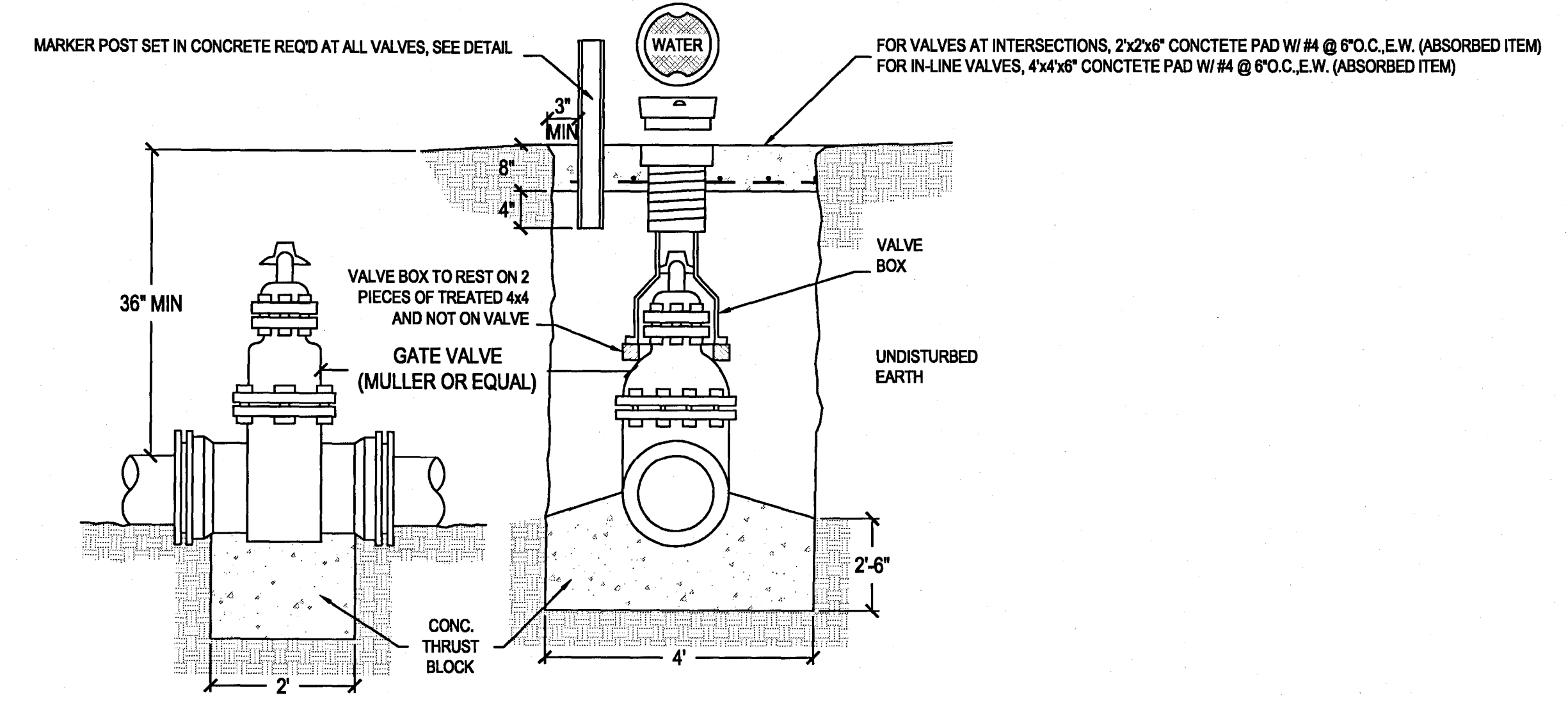
- 1) BOTTOM OF TRENCH SHALL BE FREE FROM CONSTRUCTION DEBRIS, GLASS, ROCKS, CLODS, AND TRASH.
- 2) THE MATERIAL USED FOR BACKFILLING SHALL BE FREE FROM CONSTRUCTION DEBRIS, GLASS, ROCKS, CLODS, AND TRASH. EXCAVATED MATERIAL MAY BE ALLOWED WHERE SOIL CONDITIONS ARE PERMISSIBLE. WET SOIL WILL NOT BE ALLOWED FOR BACKFILL.
- 3) THE SERVICE LINES SHALL NOT VERTICALLY CROSS IN THE TRENCH. TREATED 2x4 WOODEN STAKES, OR OTHER APPROVED SPACERS, SHALL BE USED TO PREVENT UNDERGROUND CROSSOVERS.



JOINT SERVICE LINE TRENCH DETAIL
 SCALE: N.T.S.



MARKER POST
 SCALE: N.T.S.



GATE VALVE & BOX
 SCALE: N.T.S.

DRAWING REVISIONS		
NO.	REMARKS	DATE

DRAWN BY: CWS	SCALE: As Shown
DESIGNED BY: BOG	DATE: April 2012
CHECKED BY: CLK	PROJECT: W0019C
DRAWING TITLE:	

Water Details
 SHEET NUMBER:
WD1.0

