



**RIDGELAND CITY OFFICIALS:**

MAYOR

GENE F. McGEE

BOARD OF ALDERMEN

- KEN HEARD, WARD 1
- CHUCK GAUTIER, WARD 2
- KEVIN HOLDER, WARD 3
- LARRY ROBERTS, WARD 4
- SCOTT JONES, WARD 5
- LINDA DAVIS TRUNZLER, WARD 6
- GERALD STEEN, AT-LARGE

CITY ATTORNEY

JERRY MILLS

DIRECTOR OF PUBLIC WORKS

MIKE McCOLLUM

ASST. DIRECTOR OF PUBLIC WORKS

BEN MAYS

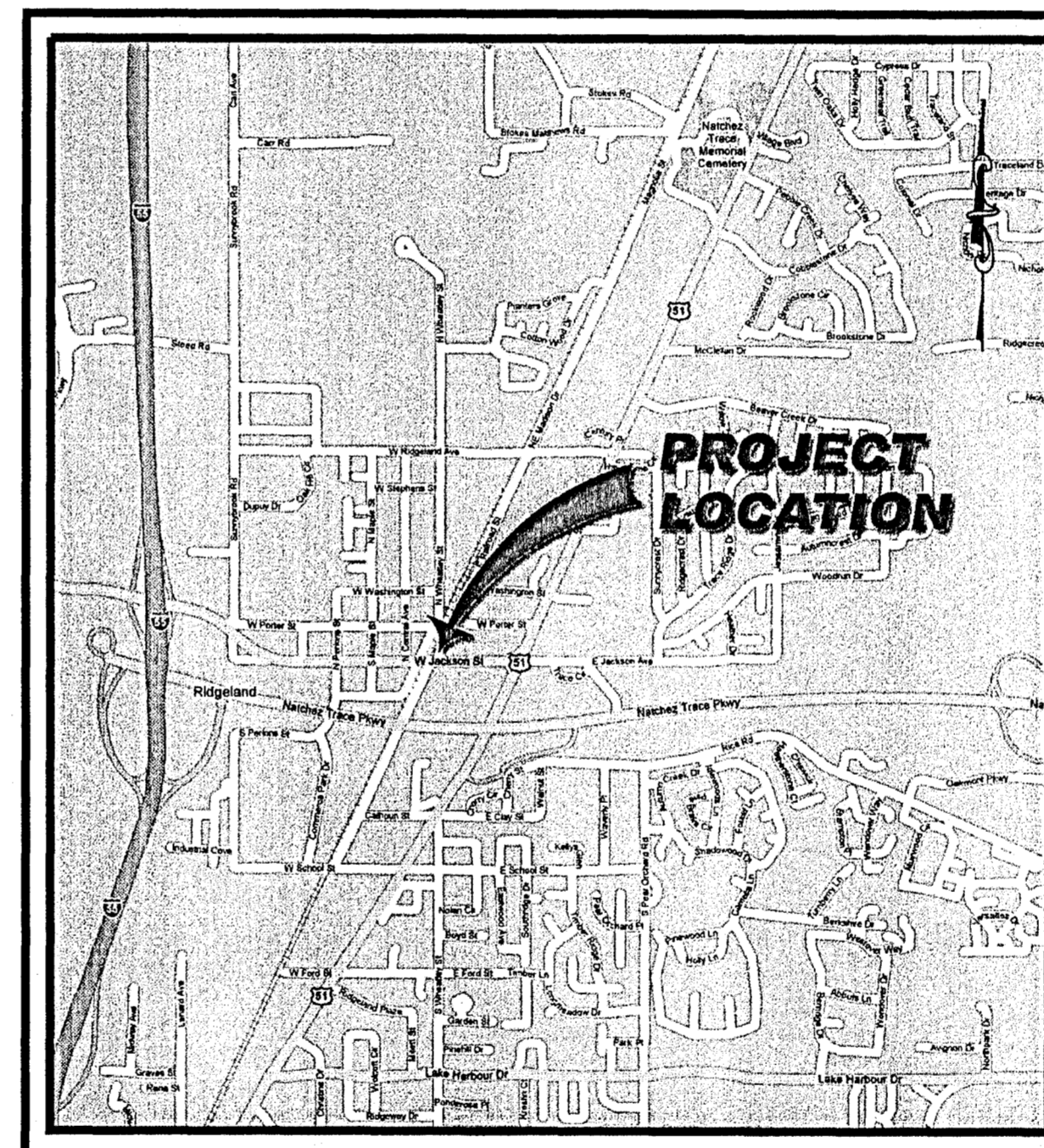
CITY ENGINEER

DAVID E. WILLIAMS, P.E.

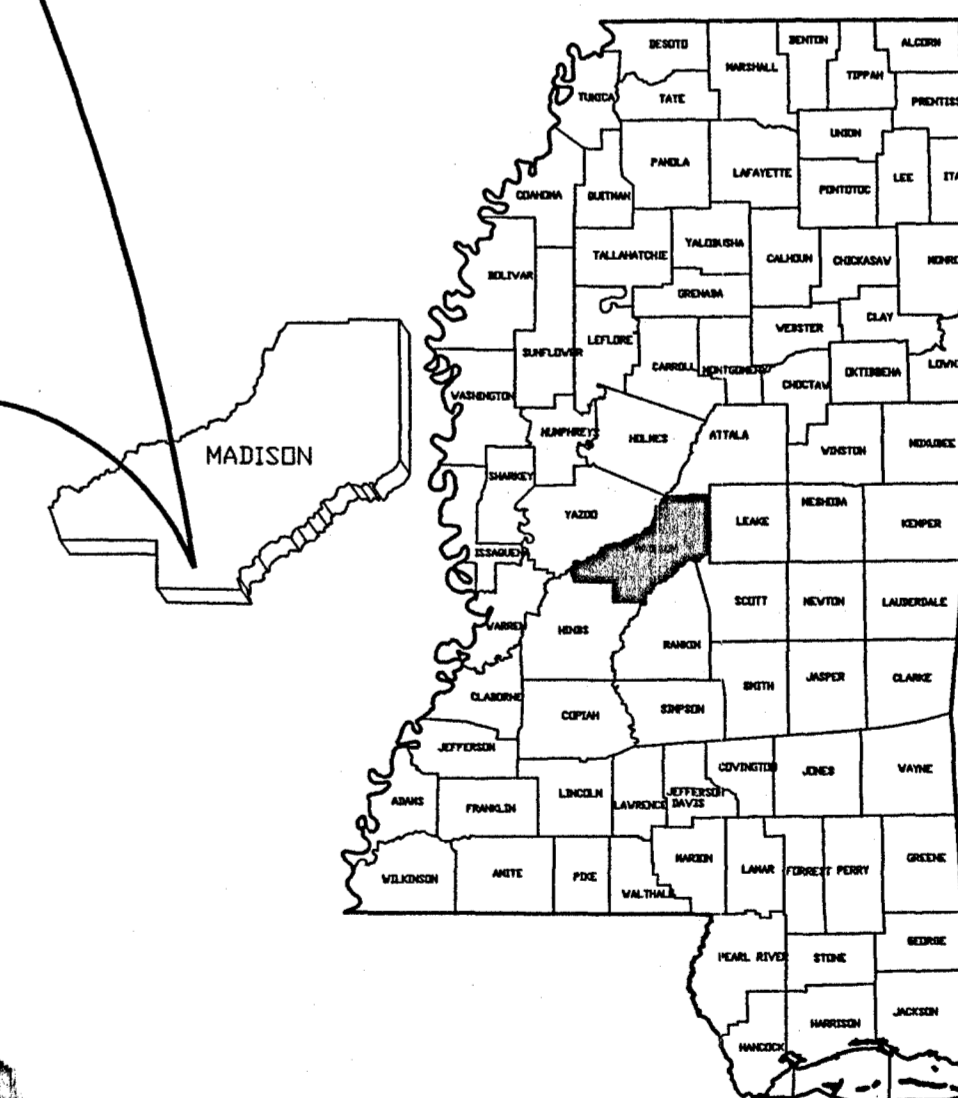
*CITY OF RIDGELAND  
MADISON COUNTY, MS*

*JACKSON STREET OVERLAY  
DISTRICT PARKING IMPROVEMENTS*

INDEX TO DRAWINGS	
SHEET NO.	TITLE
	COVER SHEET/INDEX OF DRAWINGS
C1.1	EXISTING CONDITIONS, DEMOLITION PLAN, & GENERAL NOTES
C1.2	EROSION CONTROL PLAN
C2.1	LAYOUT & SITE PLAN
C2.2	LAYOUT & SITE PLAN
C2.3	PLAZA LAYOUT, SITE, & GRADING PLAN & DETAILS
C3.1	GRADING & DRAINAGE PLAN
C3.2	GRADING & DRAINAGE PLAN
C3.3	STORM SEWER SCHEDULES
C4.1	TYPICAL SECTIONS
C4.2	TYPICAL SECTIONS
C5.1	TYPICAL DETAILS
C5.2	STORM SEWER STANDARD DETAILS
C5.3	EROSION CONTROL STANDARD DETAILS
C5.4	WATER DISTRIBUTION SYSTEM STANDARD DETAILS
L1.1	LANDSCAPE PLAN
L1.2	LANDSCAPE PLAN
L2.1	LANDSCAPING DETAILS



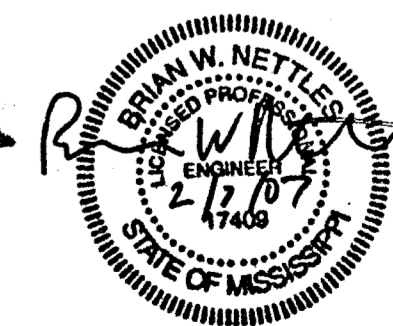
VICINITY MAP



CITY OF RIDGELAND  
JACKSON STREET OVERLAY DISTRICT  
PARKING IMPROVEMENTS WEI# C06-024

SEPTEMBER 2006  
WEI #C06-024

PWR-01014





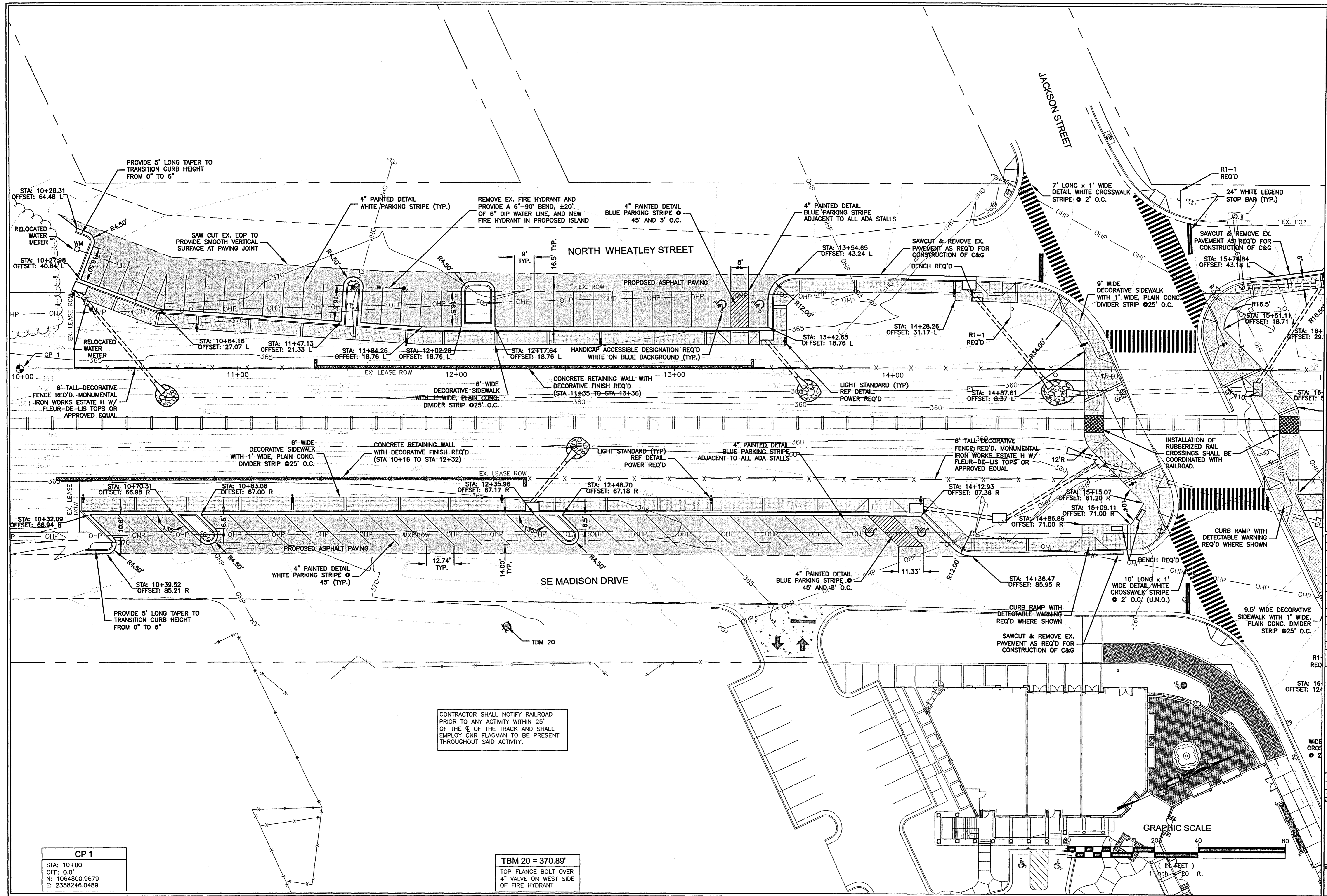








**CITY OF RIDGELAND  
 WEST JACKSON ST. OVERLAY  
 DISTRICT PARKING IMPROVEMENTS**  
 WEI# C06-024



DRAWING REVISIONS		
NO.	REMARKS	DATE

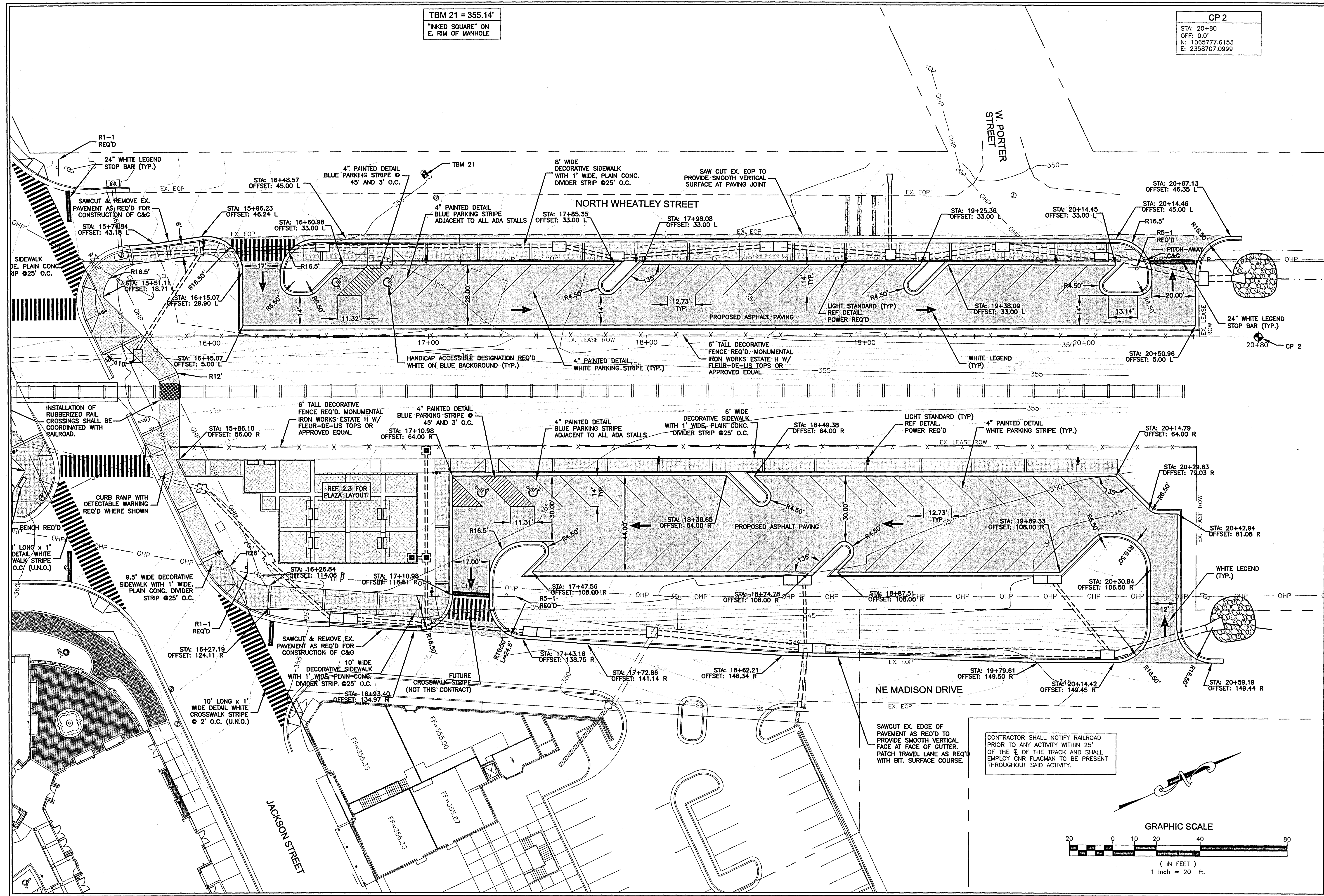
DRAWN BY: BN	SCALE: 1" = 20'
DESIGNED BY: BN	DATE: AUGUST 2008
CHECKED BY: JB	PROJECT: C06-024
DRAWING TITLE:	

LAYOUT & SITE PLAN

SHEET NUMBER: C2.1



**CITY OF RIDGELAND  
 WEST JACKSON ST. OVERLAY  
 DISTRICT PARKING IMPROVEMENTS**  
 WEI# C06-024



CP 2  
 STA: 20+80  
 OFF: 0.0'  
 N: 1065777.6153  
 E: 2358707.0999

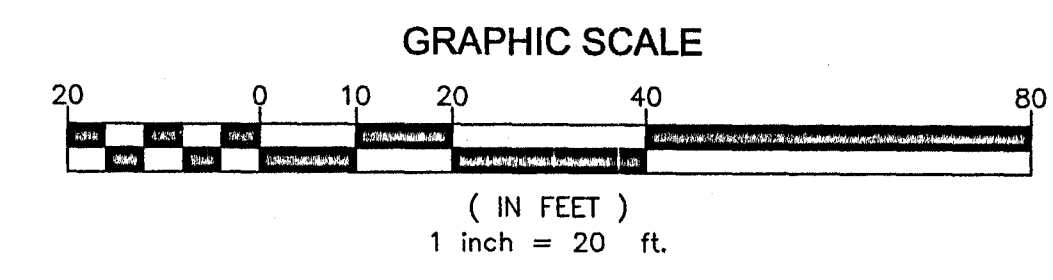
TBM 21 = 355.14'  
 "INKED SQUARE" ON  
 E. RIM OF MANHOLE

DRAWING REVISIONS		
NO.	REMARKS	DATE

SCALE: 1" = 20'  
 DESIGNED BY: BN DATE: AUGUST 2008  
 CHECKED BY: JB PROJECT: C06-024  
 DRAWING TITLE:  
 SHEET NUMBER:

LAYOUT &  
 SITE PLAN

C2.2



CONTRACTOR SHALL NOTIFY RAILROAD PRIOR TO ANY ACTIVITY WITHIN 25' OF THE C OF THE TRACK AND SHALL EMPLOY CNR FLAGMAN TO BE PRESENT THROUGHOUT SAID ACTIVITY.

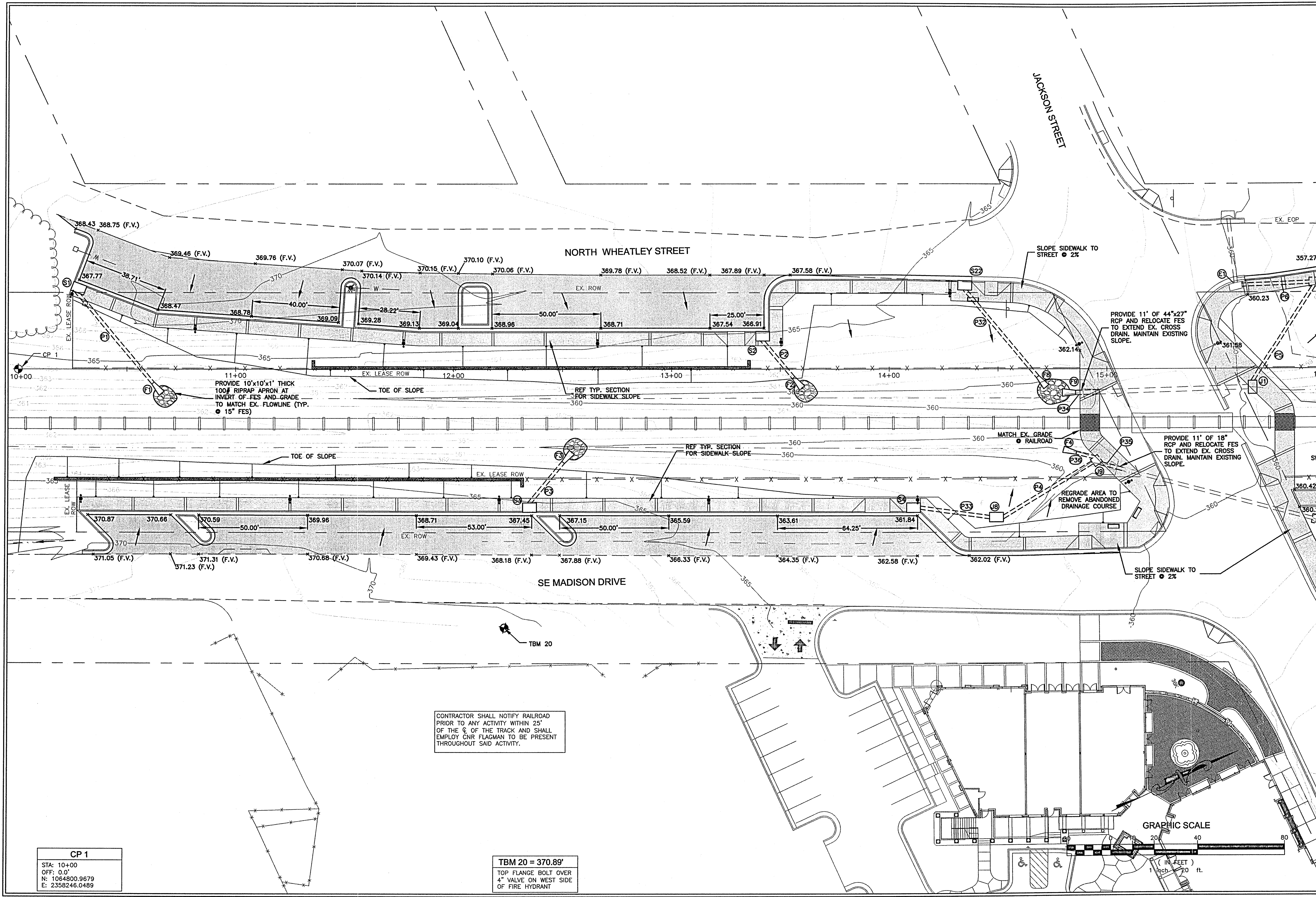
SAWCUT EX. EDGE OF PAVEMENT AS REQ'D TO PROVIDE SMOOTH VERTICAL FACE AT FACE OF GUTTER. PATCH TRAVEL LANE AS REQ'D WITH BIT. SURFACE COURSE.







**CITY OF RIDGELAND  
 WEST JACKSON ST. OVERLAY  
 DISTRICT PARKING IMPROVEMENTS**  
 WEI# C06-024



**CP 1**  
 STA: 10+00  
 OFF: 0.0'  
 N: 1064800.9679  
 E: 2358246.0489

CONTRACTOR SHALL NOTIFY RAILROAD  
 PRIOR TO ANY ACTIVITY WITHIN 25'  
 OF THE C. & OF THE TRACK AND SHALL  
 EMPLOY CNR FLAGMAN TO BE PRESENT  
 THROUGHOUT SAID ACTIVITY.

**TBM 20 = 370.89'**  
 TOP FLANGE BOLT OVER  
 4" VALVE ON WEST SIDE  
 OF FIRE HYDRANT

DRAWING REVISIONS		
NO.	REMARKS	DATE

SCALE:  
 DRAWN BY: BH SCALE: 1" = 20'  
 DESIGNED BY: BH DATE: AUGUST 2006  
 CHECKED BY: JB PROJECT: C06-024  
 DRAWING TITLE:

**GRAPHIC SCALE**  
 (IN FEET)  
 0 20 40 80  
 1 inch = 20 ft.

**GRADING &  
 DRAINAGE PLAN**  
 SHEET NUMBER:  
**C3.1**

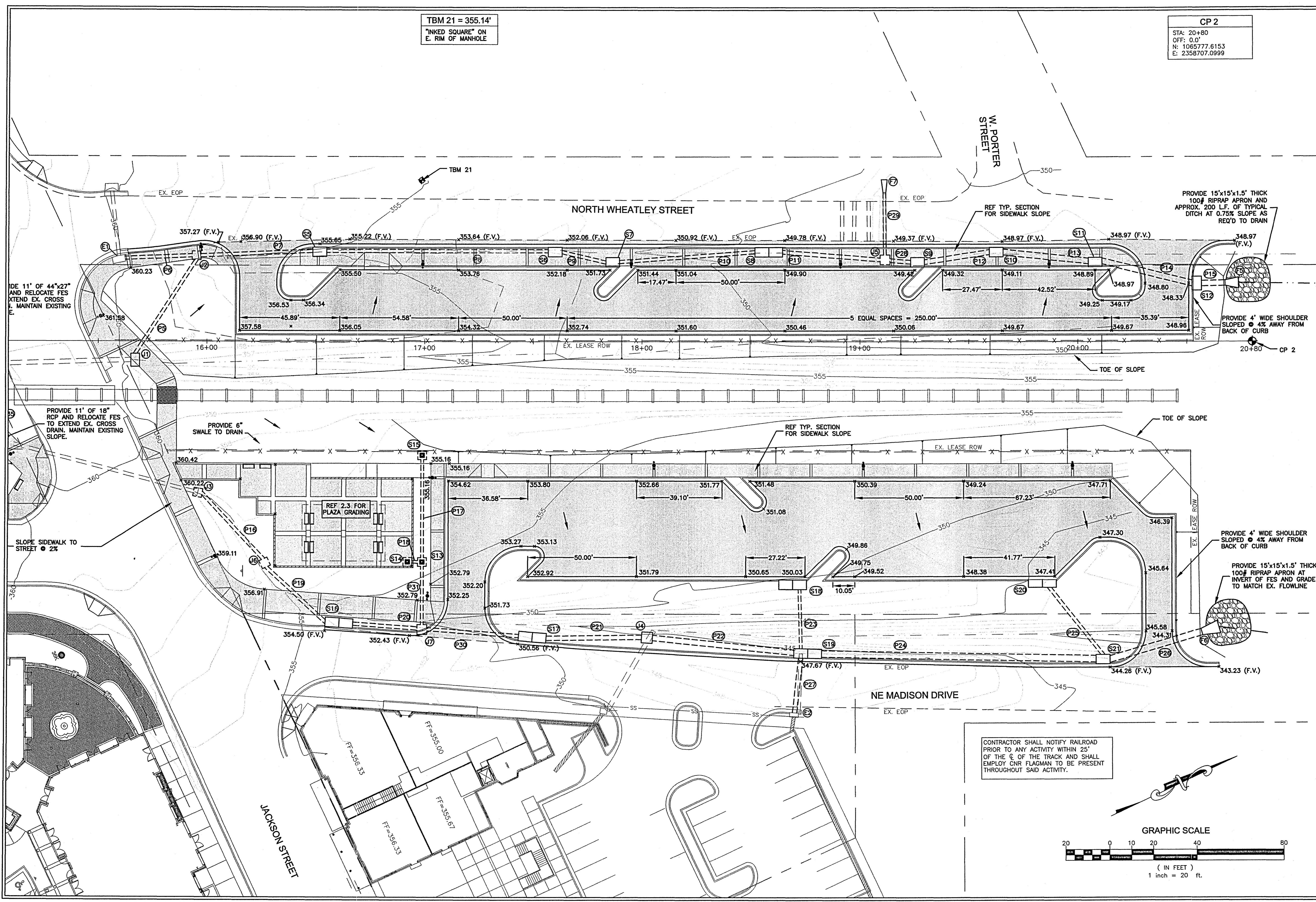


TBM 21 = 355.14'  
 "INKED SQUARE" ON  
 E. RIM OF MANHOLE

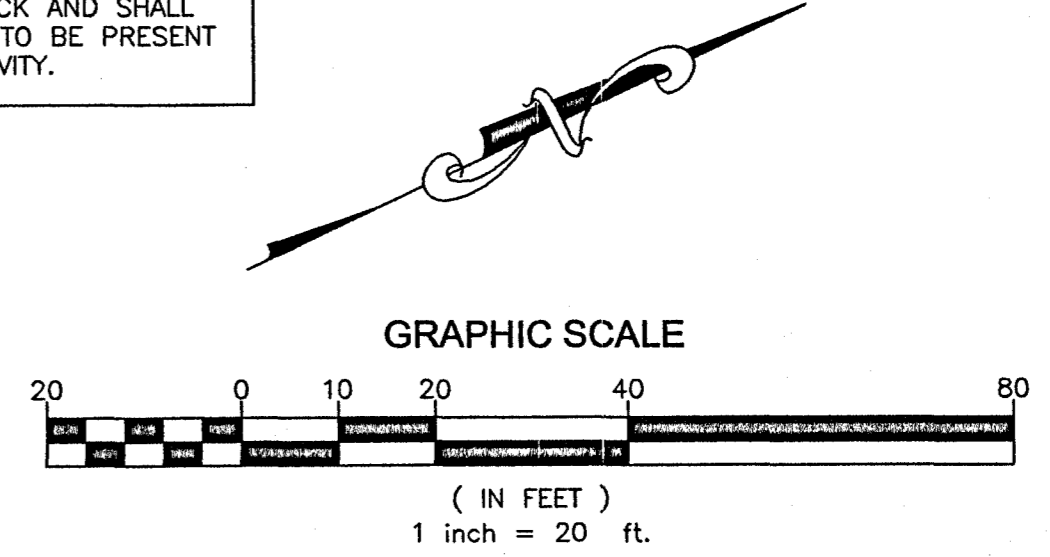
CP 2  
 STA: 20+80  
 OFF: 0.0'  
 N: 1065777.6153  
 E: 2358707.0999

**WAGGONER**  
 Engineers, Surveyors, Planners  
 143-A LeFleurs Square  
 JACKSON, MS 39211  
 601-355-9526  
 FAX 601-352-3945

**CITY OF RIDGELAND  
 WEST JACKSON ST. OVERLAY  
 DISTRICT PARKING IMPROVEMENTS**  
 WEI# C06-024



CONTRACTOR SHALL NOTIFY RAILROAD PRIOR TO ANY ACTIVITY WITHIN 25' OF THE C. OF THE TRACK AND SHALL EMPLOY CNR FLAGMAN TO BE PRESENT THROUGHOUT SAID ACTIVITY.



DRAWING REVISIONS		
NO.	REMARKS	DATE

DRAWN BY: BN SCALE: 1" = 20'  
 DESIGNED BY: BN DATE: AUGUST 2006  
 CHECKED BY: JB PROJECT: C06-024  
 DRAWING TITLE:

**GRADING &  
 DRAINAGE PLAN**

SHEET NUMBER:  
**C3.2**

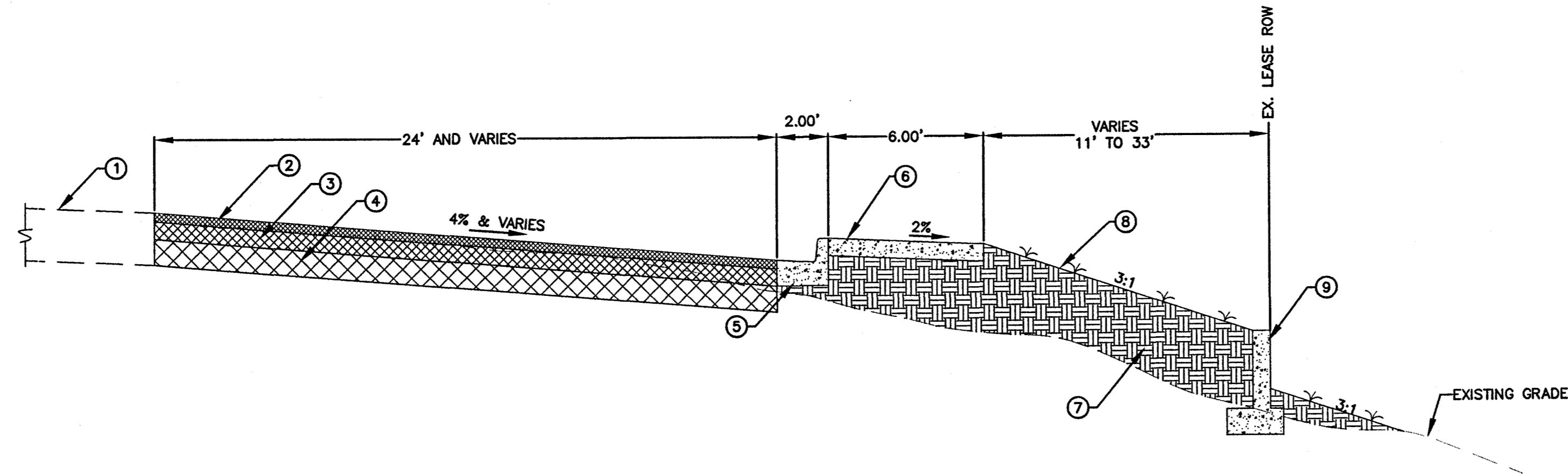








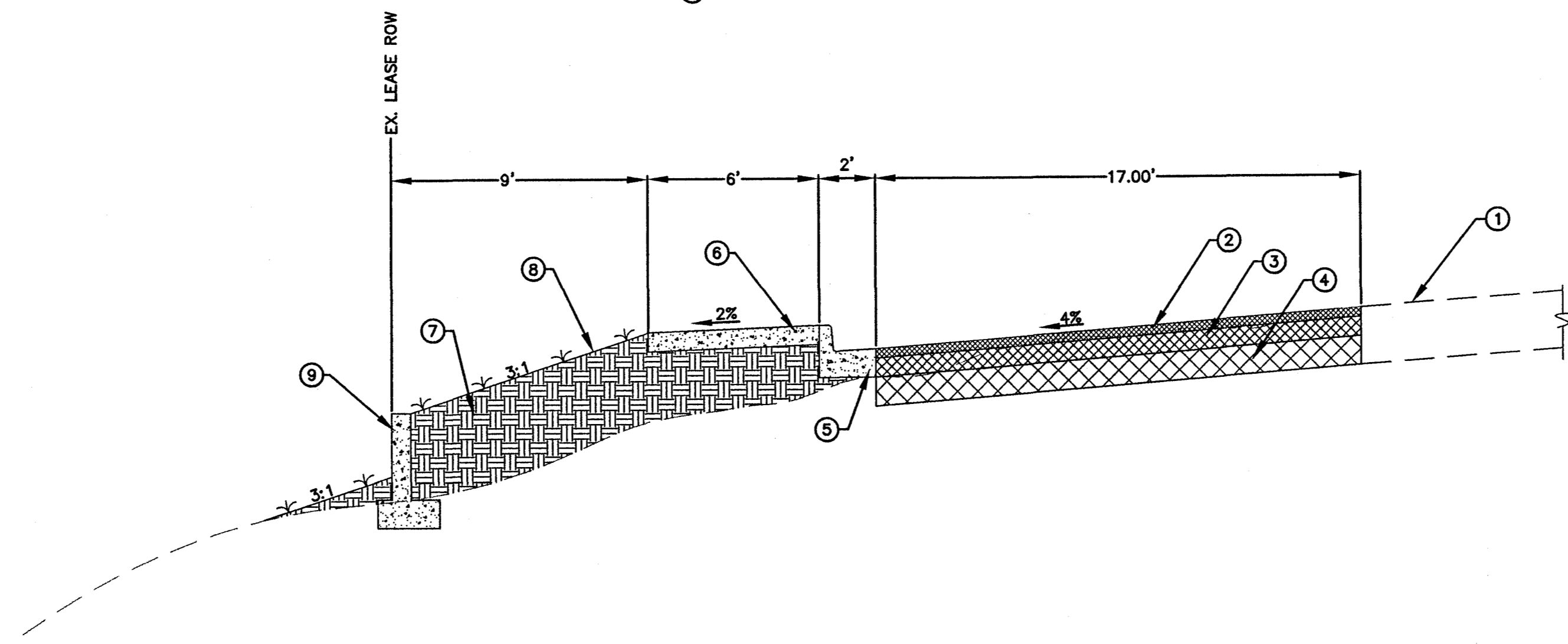




**TYPICAL SECTION @ SOUTHWEST PARKING LOT**

NOTE: SUBGRADE MATERIALS BENEATH ALL PAVEMENTS, CURB & GUTTER, AND RETAINING WALLS TO A MINIMUM DEPTH OF 2 FT SHALL CONSIST OF MATERIAL SATISFYING THE REQUIREMENTS FOR BORROW EXCAVATION. IF IN-SITU MATERIALS DO NOT SATISFY THESE REQUIREMENTS THEY SHALL BE EXCAVATED AND REPLACED WITH APPROVED BORROW MATERIAL.

- ① EXISTING PAVEMENT STRUCTURE
- ② 1 1/2" BITUMINOUS SURFACE COURSE
- ③ 1 1/2" BITUMINOUS BINDER COURSE
- ④ 3" BITUMINOUS BASE COURSE
- ⑤ TYPE 1 RECEIVING CURB AND GUTTER
- ⑥ DECORATIVE SIDEWALK
- ⑦ SELECT FILL
- ⑧ ESTABLISH VEGETATIVE COVER ON ALL DISTURBED GROUND AND PROPOSED SLOPES WHERE LANDSCAPING IS NOT REQ'D. EROSION CONTROL BLANKET REQUIRED ON ALL SLOPES 3:1 OR GREATER
- ⑨ CONCRETE RETAINING WALL



**TYPICAL SECTION @ SOUTHWEST PARKING LOT**

- ① EXISTING PAVEMENT STRUCTURE
- ② 1 1/2" BITUMINOUS SURFACE COURSE
- ③ 1 1/2" BITUMINOUS BINDER COURSE
- ④ 3" BITUMINOUS BASE COURSE
- ⑤ TYPE 1 RECEIVING CURB AND GUTTER
- ⑥ DECORATIVE SIDEWALK
- ⑦ SELECT FILL
- ⑧ ESTABLISH VEGETATIVE COVER ON ALL DISTURBED GROUND AND PROPOSED SLOPES WHERE LANDSCAPING IS NOT REQ'D. EROSION CONTROL BLANKET REQUIRED ON ALL SLOPES 3:1 OR GREATER
- ⑨ CONCRETE RETAINING WALL

**CITY OF RIDGELAND**  
**WEST JACKSON ST. OVERLAY**  
**DISTRICT PARKING IMPROVEMENTS**  
 WEI# C06-024

DRAWING REVISIONS		
NO.	REMARKS	DATE

DESIGNED BY:	BN	SCALE:	N.T.S.
CHECKED BY:	JB	DATE:	AUGUST 2006
DRAWING TITLE:	C06-024		

TYPICAL SECTIONS

SHEET NUMBER: **C4.2**

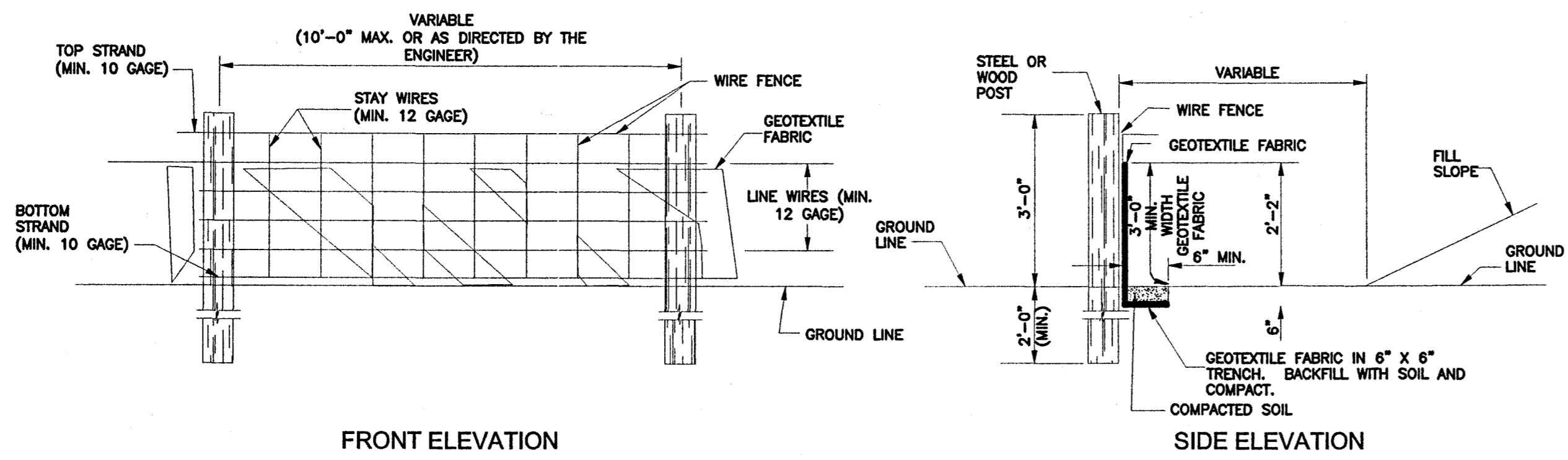








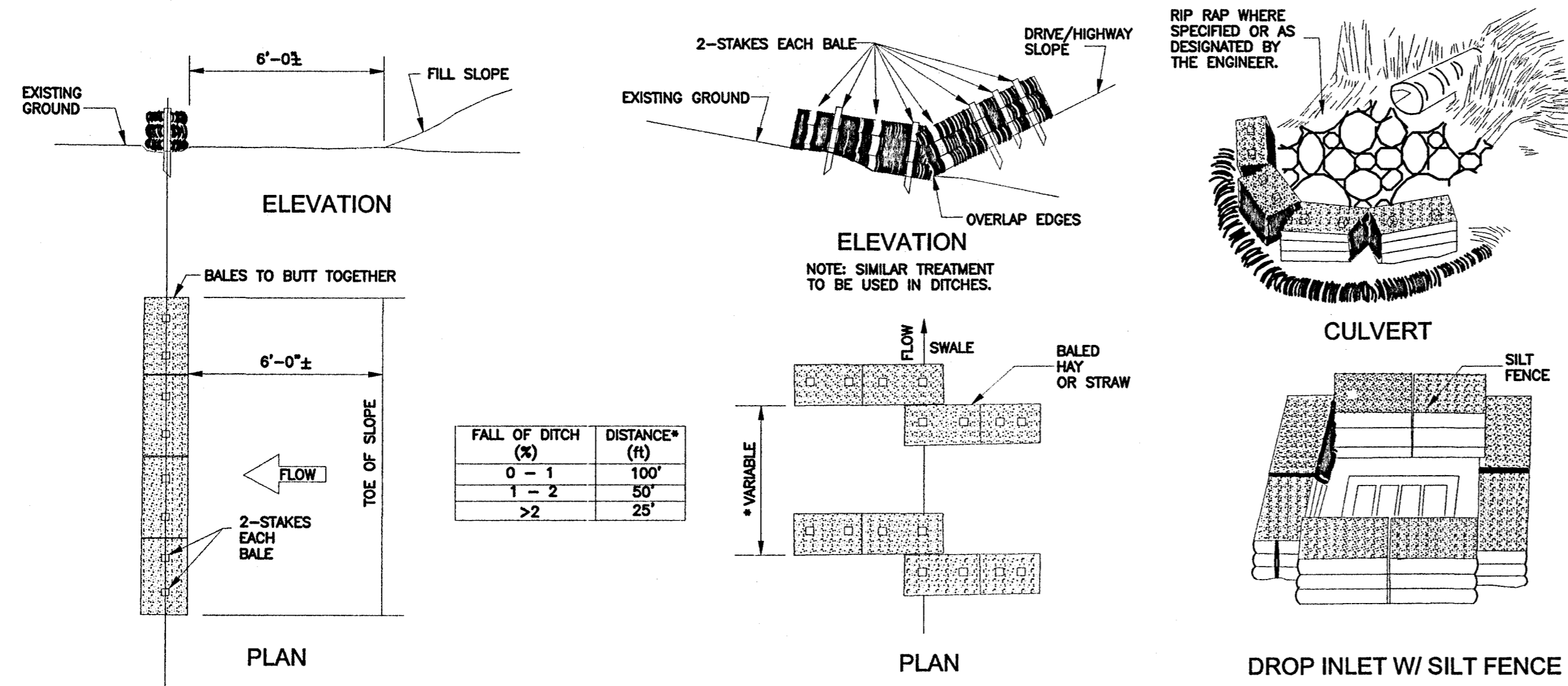




- NOTES:**
1. WIRE SHALL BE MINIMUM OF 32" IN WIDTH AND SHALL HAVE A MINIMUM OF 6 LINE WIRES WITH 12" STAY SPACING.
  2. GEOTEXTILE FABRIC SHALL BE A MINIMUM OF 36" IN WIDTH AND SHALL BE FASTENED ADEQUATELY TO THE WIRE AS DIRECTED BY THE ENGINEER.
  3. STEEL POST SHALL BE 5'-0" IN HEIGHT AND OF THE SELF-FASTENER ANGLE STEEL TYPE. WOOD POST SHALL BE A MINIMUM OF 5'-0" IN HEIGHT AND 3" OR MORE IN DIAMETER. WIRE FENCE SHALL BE FASTENED TO WOODEN POST WITH NOT LESS THAN 9 GAGE WIRE STAPLES 1" LONG.
  4. GEOTEXTILE FABRIC MEETING THE TYPE II MATERIAL REQUIREMENTS AND INSTALLED ACCORDING TO SPECIFICATIONS MAY BE USED WITHOUT WIRE FENCE.
  5. CLEAN OUT WHEN 1/2 FULL.

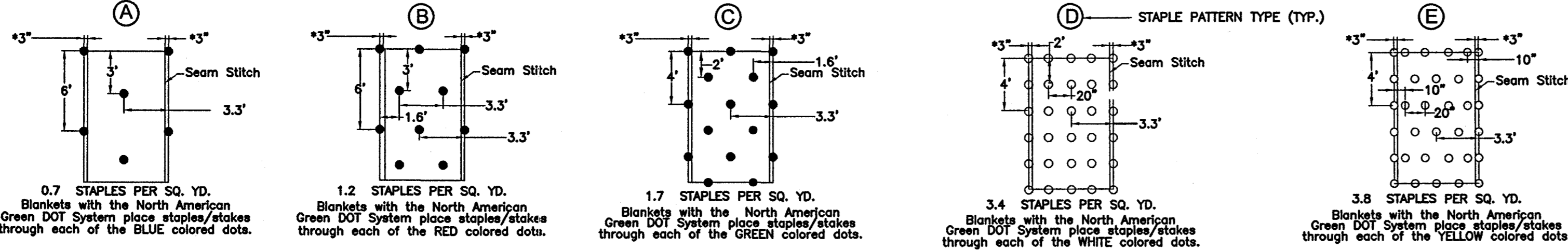
**SILT FENCE DETAILS**

SCALE: N.T.S.



**EROSION/SEDIMENT CONTROL DETAILS**

SCALE: N.T.S.

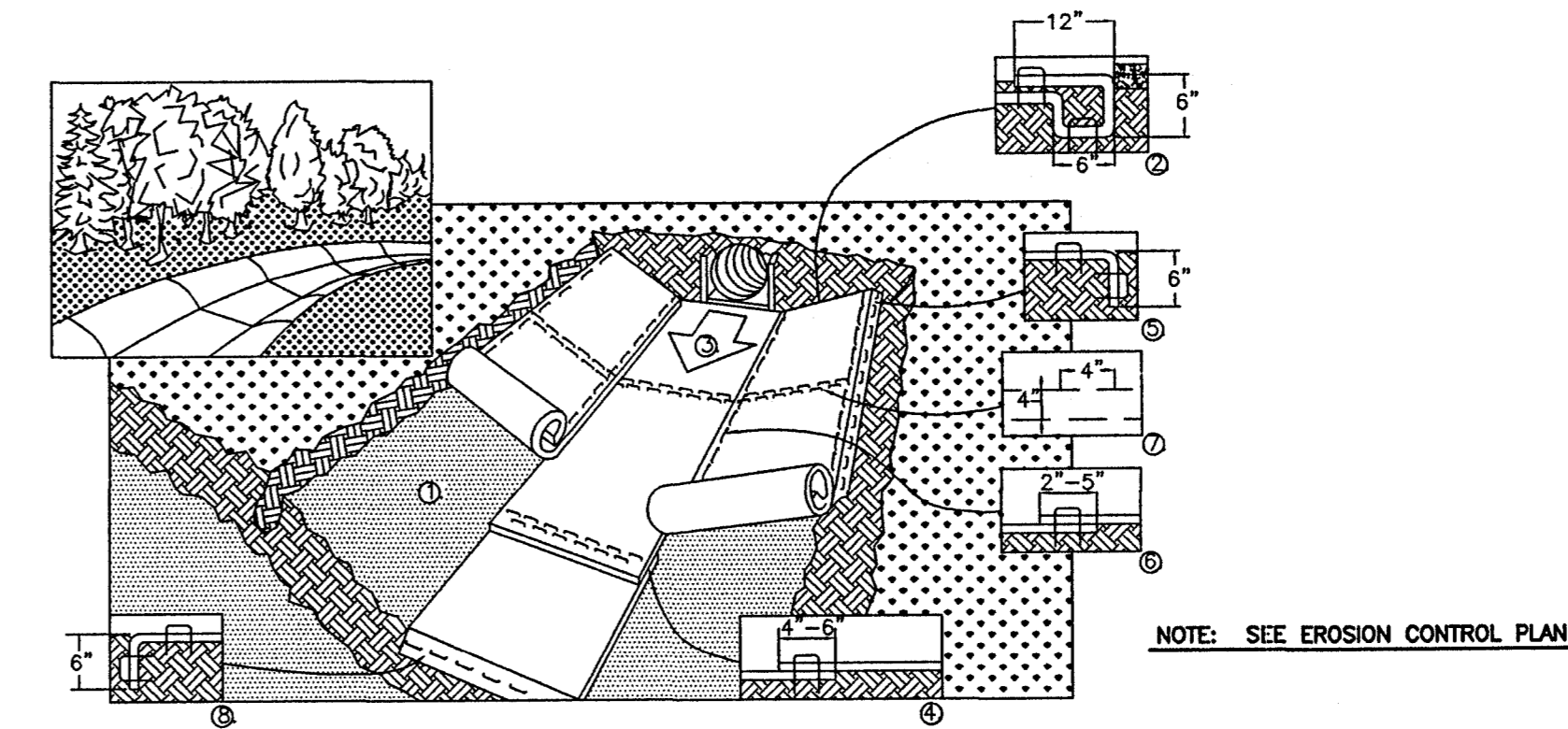


**DRAINAGE BLANKET STAPLE PATTERNS**

SCALE: N.T.S.

MAINTENANCE OF EROSION AND SEDIMENT CONTROL MEASURES SHALL MEET THE MISSISSIPPI DEPARTMENT OF ENVIRONMENTAL QUALITY STANDARDS AS NOTED IN THE MDEQ PLANNING AND DESIGN MANUAL FOR THE CONTROL OF EROSION, SEDIMENT AND STORMWATER, OR THE MDEQ FIELD GUIDE FOR EROSION AND SEDIMENT CONTROL ON CONSTRUCTION SITES IN MISSISSIPPI.

ALL CONSTRUCTION AND MAINTENANCE SHALL ADHERE TO THE MADISON STORMWATER MANAGEMENT ORDINANCES, MADISON LAND DISTURBANCE AND EROSION CONTROL ORDINANCES, MADISON SUBDIVISION REGULATIONS, MADISON ZONING ORDINANCES, MADISON LANDSCAPE ORDINANCES, MADISON FLOODPLAIN DAMAGE PREVENTION ORDINANCES, MISSISSIPPI PLANNING AND DESIGN MANUAL FOR THE CONTROL OF EROSION, SEDIMENT, AND STORMWATER, THE FIELD MANUAL FOR EROSION AND SEDIMENT CONTROL ON CONSTRUCTION SITES IN MISSISSIPPI, AND MISSISSIPPI STORM WATER CONSTRUCTION GENERAL NATIONAL POLLUTANT DISCHARGE ELIMINATION SYSTEM PERMIT.

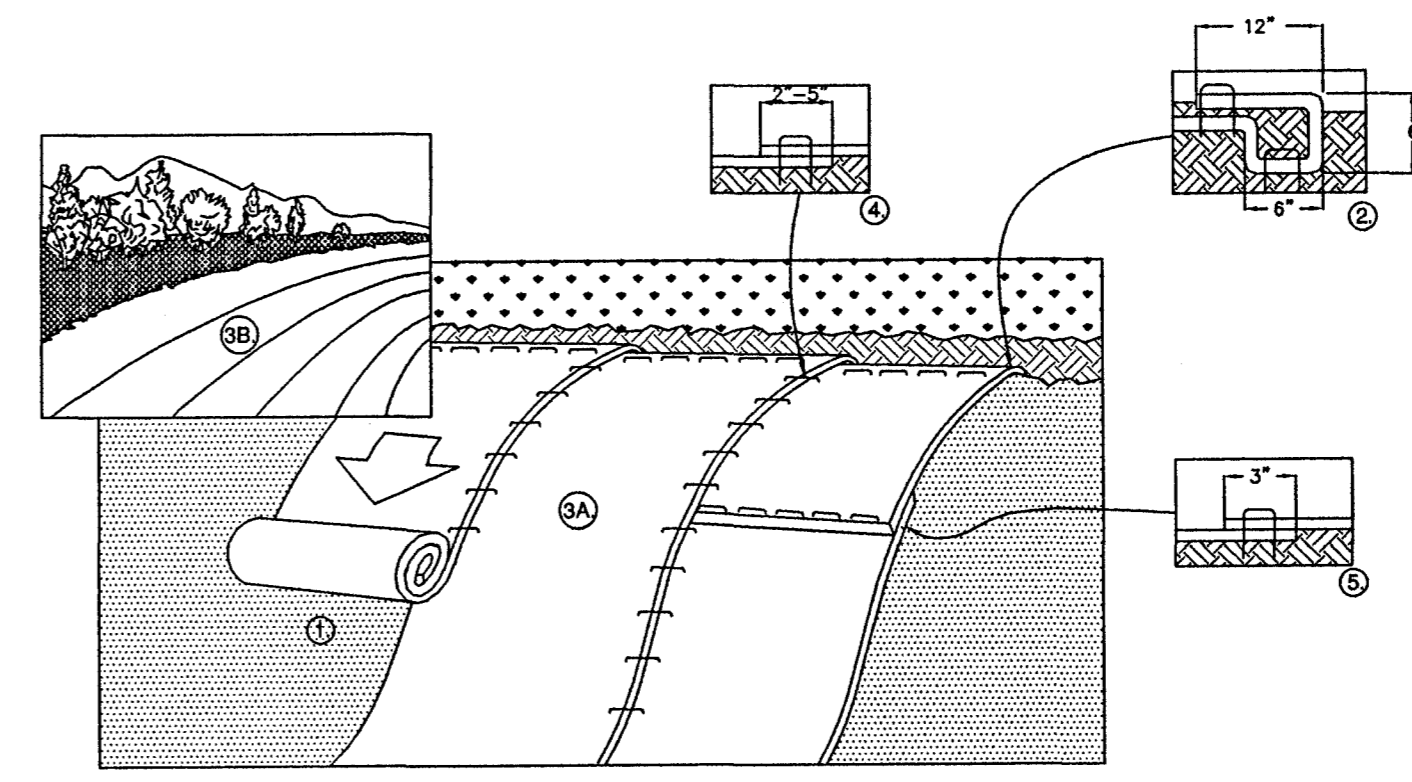


- NOTE: SEE EROSION CONTROL PLAN**
1. PREPARE SOIL BEFORE INSTALLING BLANKETS, INCLUDING ANY NECESSARY APPLICATION OF LIME, FERTILIZER, AND SEED. NOTE: WHEN USING CELL-O-SEED DO NOT SEED PREPARED AREA. CELL-O-SEED MUST BE INSTALLED WITH PAPER SIDE DOWN.
  2. BEGIN AT THE TOP OF THE CHANNEL BY ANCHORING THE BLANKET IN A 6" (15cm) DEEP X 6" (15cm) WIDE TRENCH WITH APPROXIMATELY 12" (30cm) OF BLANKET EXTENDED BEYOND THE UP-SLOPE PORTION OF THE TRENCH. ANCHOR THE BLANKET WITH A ROW OF STAPLES/STAKES APPROXIMATELY 12" (30cm) APART IN THE BOTTOM OF THE TRENCH. BACKFILL AND COMPACT THE TRENCH AFTER STAPLING. APPLY SEED TO COMPACTED SOIL AND FOLD REMAINING 12" (30cm) PORTION OF BLANKET BACK OVER SEED AND COMPACTED SOIL. SECURE BLANKET OVER COMPACTED SOIL WITH A ROW OF STAPLES/STAKES SPACED APPROXIMATELY 12" (30cm) APART ACROSS THE WIDTH OF THE BLANKET.
  3. ROLL CENTER BLANKET IN DIRECTION OF WATER FLOW IN BOTTOM OF CHANNEL. BLANKETS WILL UNROLL WITH APPROPRIATE SIDE AGAINST THE SOIL SURFACE. ALL BLANKETS MUST BE SECURELY FASTENED TO SOIL SURFACE BY PLACING STAPLES/STAKES IN APPROPRIATE LOCATIONS AS SHOWN IN THE STAPLE PATTERN GUIDE. WHEN USING OPTIONAL DOT SYSTEM, STAPLES/STAKES SHOULD BE PLACED THROUGH EACH OF THE COLORED DOTS CORRESPONDING TO THE APPROPRIATE STAPLE PATTERN.
  4. PLACE CONSECUTIVE BLANKETS END OVER END (SHINGLE STYLE) WITH A 4"-6" (10cm-15cm) OVERLAP. USE A DOUBLE ROW OF STAPLES STAGGERED 4" (10cm) APART AND 4" (10cm) ON CENTER TO SECURE BLANKETS.
  5. FULL LENGTH EDGE OF BLANKETS AT TOP OF SIDE SLOPES MUST BE ANCHORED WITH A ROW OF STAPLES/STAKES APPROXIMATELY 12" (30cm) APART IN A 6" (15cm) DEEP X 6" (15cm) WIDE TRENCH. BACKFILL AND COMPACT THE TRENCH AFTER STAPLING.
  6. ADJACENT BLANKETS MUST BE OVERLAPPED APPROXIMATELY 2"-5" (5cm-12.5cm) (DEPENDENT ON BLANKET TYPE) AND STAPLED. TO ENSURE PROPER SEAM ALIGNMENT, PLACE THE EDGE OF THE OVERLAPPING BLANKET (BLANKET BEING INSTALLED ON TOP) EVEN WITH THE COLORED SEAM STITCH ON THE BLANKET BEING OVERLAPPED.
  7. IN CHANNEL APPLICATIONS, A STAPLE CHECK SLOT IS RECOMMENDED AT 30 TO 40 FOOT (9m-12m) INTERVALS. USE A DOUBLE ROW OF STAPLES STAGGERED 4" (10cm) APART AND 4" (10cm) ON CENTER OVER ENTIRE WIDTH OF THE CHANNEL.
  8. THE TERMINAL END OF THE BLANKETS MUST BE ANCHORED WITH A ROW OF STAPLES/STAKES APPROXIMATELY 12" (30cm) APART IN A 6" (15cm) DEEP X 6" (15cm) WIDE TRENCH. BACKFILL AND COMPACT THE TRENCH AFTER STAPLING.

- CRITICAL POINTS**
- A. OVERLAPS AND SEAMS
  - B. PROJECTED WATER LINE
  - C. CHANNEL BOTTOM/SIDE SLOPE VERTICES
- NOTE:**
- \* HORIZONTAL STAPLE SPACING SHOULD BE ALTERED IF NECESSARY TO ALLOW STAPLES TO SECURE THE CRITICAL POINTS ALONG THE CHANNEL SURFACE.
  - \*\* IN LOOSE SOIL CONDITIONS, THE USE OF STAPLE OR STAKE LENGTHS GREATER THAN 6" (15 cm) MAY BE NECESSARY TO PROPERLY ANCHOR THE BLANKETS.

**DRAINAGE BLANKET "CHANNEL" INSTALLATION**

SCALE: N.T.S.



**NOTE: SEE EROSION CONTROL PLAN**

1. PREPARE SOIL BEFORE INSTALLING BLANKETS, INCLUDING ANY NECESSARY APPLICATION OF LIME, FERTILIZER, AND SEED. NOTE: WHEN USING CELL-O-SEED DO NOT SEED PREPARED AREA. CELL-O-SEED MUST BE INSTALLED WITH PAPER SIDE DOWN.
2. BEGIN AT THE TOP OF THE SLOPE BY ANCHORING THE BLANKET IN A 6" (15cm) DEEP X 6" (15cm) WIDE TRENCH WITH APPROXIMATELY 12" (30cm) OF BLANKET EXTENDED BEYOND THE UP-SLOPE PORTION OF THE TRENCH. ANCHOR THE BLANKET WITH A ROW OF STAPLES/STAKES APPROXIMATELY 12" (30cm) APART IN THE BOTTOM OF THE TRENCH. BACKFILL AND COMPACT THE TRENCH AFTER STAPLING. APPLY SEED TO COMPACTED SOIL AND FOLD REMAINING 12" (30cm) PORTION OF BLANKET BACK OVER SEED AND COMPACTED SOIL. SECURE BLANKET OVER COMPACTED SOIL WITH A ROW OF STAPLES/STAKES SPACED APPROXIMATELY 12" (30cm) APART ACROSS THE WIDTH OF THE BLANKET.
3. ROLL THE BLANKETS (A) DOWN OR (B) HORIZONTALLY ACROSS THE SLOPE. BLANKETS WILL UNROLL WITH APPROPRIATE SIDE AGAINST THE SOIL SURFACE. ALL BLANKETS MUST BE SECURELY FASTENED TO SOIL SURFACE BY PLACING STAPLES/STAKES IN APPROPRIATE LOCATIONS AS SHOWN IN THE STAPLE PATTERN GUIDE. WHEN USING OPTIONAL DOT SYSTEM, STAPLES/STAKES SHOULD BE PLACED THROUGH EACH OF THE COLORED DOTS CORRESPONDING TO THE APPROPRIATE STAPLE PATTERN.
4. THE EDGES OF PARALLEL BLANKETS MUST BE STAPLED WITH APPROXIMATELY 2"-5" (5cm-12.5cm) OVERLAP DEPENDENT ON BLANKET TYPE. TO ENSURE PROPER SEAM ALIGNMENT, PLACE THE EDGE OF THE OVERLAPPING BLANKET (BLANKET BEING INSTALLED ON TOP) EVEN WITH THE COLORED SEAM STITCH ON THE PREVIOUSLY INSTALLED BLANKET.
5. CONSECUTIVE BLANKETS SPICED DOWN THE SLOPE MUST BE PLACED END OVER END (SHINGLE STYLE) WITH AN APPROXIMATE 3" (7.5cm) OVERLAP. STAPLE THROUGH OVERLAPPED AREA, APPROXIMATELY 12" (30cm) APART ACROSS ENTIRE BLANKET WIDTH.

- NOTE:**
- \* IN LOOSE SOIL CONDITIONS, THE USE OF STAPLE OR STAKE LENGTHS GREATER THAN 6" (15cm) MAY BE NECESSARY TO PROPERLY SECURE THE BLANKETS.

**DRAINAGE BLANKET "SLOPE" INSTALLATION**

SCALE: N.T.S.

DRAWING REVISIONS		
NO.	REMARKS	DATE

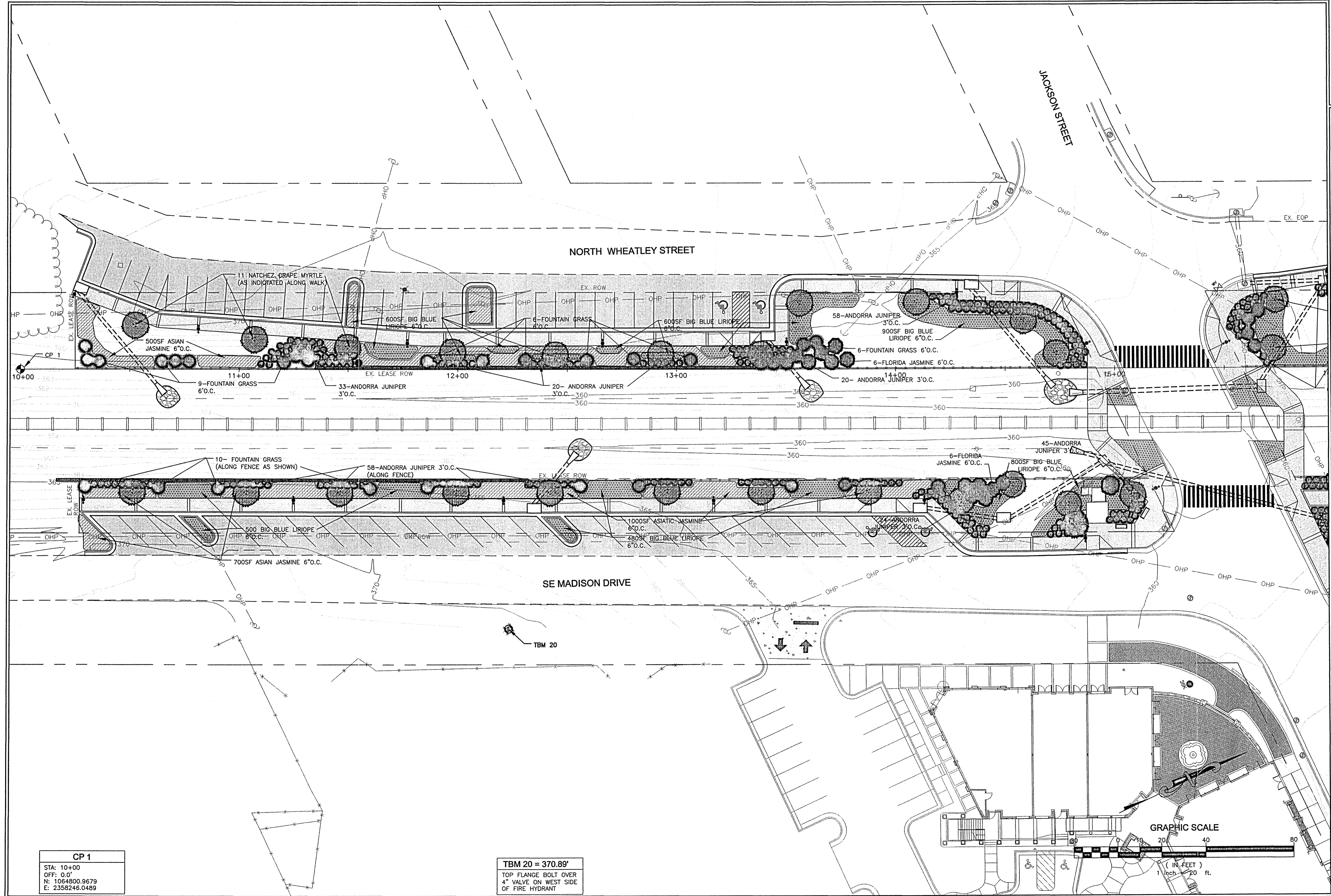
SCALE: N.T.S.  
 DESIGNED BY: BN  
 DATE: AUGUST 2008  
 CHECKED BY: JB  
 PROJECT: C06-024  
 DRAWING TITLE: EROSION CONTROL STANDARD DETAILS







**CITY OF RIDGELAND  
 WEST JACKSON ST. OVERLAY  
 DISTRICT PARKING IMPROVEMENTS  
 WEI# C06-024**



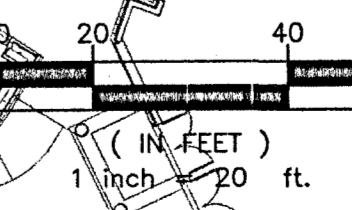
**CP 1**  
 STA: 10+00  
 OFF: 0.0'  
 N: 1064800.9679  
 E: 2358246.0489

**TBM 20 = 370.89'**  
 TOP FLANGE BOLT OVER  
 4" VALVE ON WEST SIDE  
 OF FIRE HYDRANT

DRAWING REVISIONS		
NO.	REMARKS	DATE

SCALE:	
DRAWN BY:	BH
DESIGNED BY:	BH
CHECKED BY:	JB
DRAWING TITLE:	LANDSCAPE PLAN
DATE:	AUGUST 2008
PROJECT:	C06-024
SHEET NUMBER:	L1.1

GRAPHIC SCALE



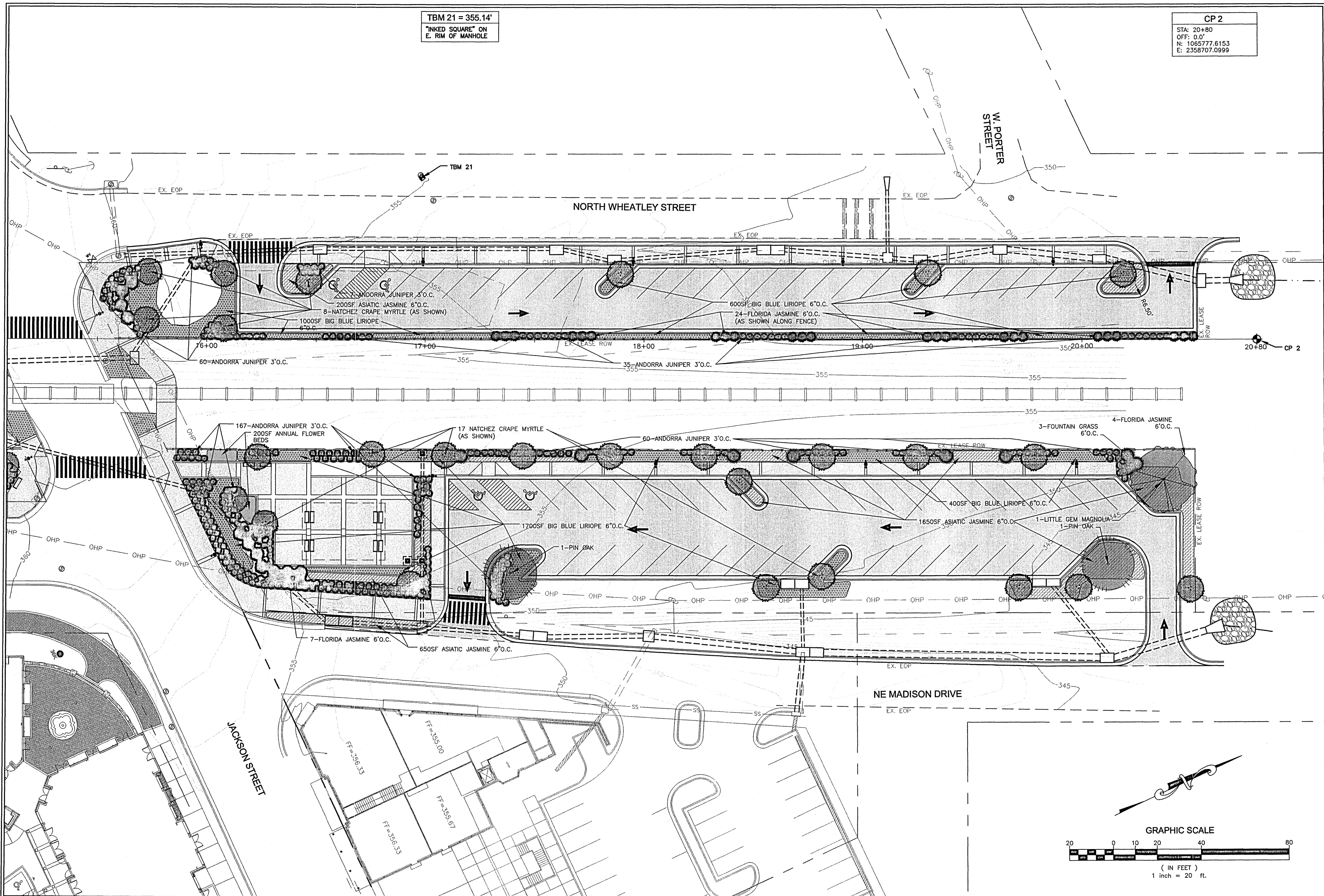


TBM 21 = 355.14'  
 "INKED SQUARE" ON  
 E. RIM OF MANHOLE

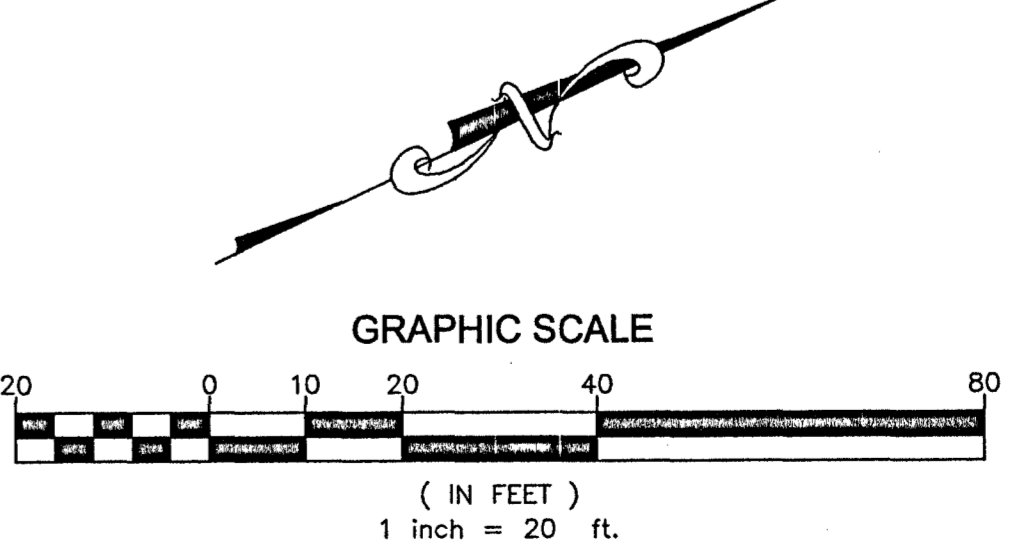
CP 2  
 STA: 20+80  
 OFF: 0.0'  
 N: 1085777.6153  
 E: 2358707.0999

**WAGGONER**  
 Engineers, Surveyors, Planners  
 143-A LeFleurs Square  
 JACKSON, MS 39211  
 601-355-9526  
 FAX 601-352-3945

**CITY OF RIDGELAND  
 WEST JACKSON ST. OVERLAY  
 DISTRICT PARKING IMPROVEMENTS**  
 WEI# C06-024



DRAWING REVISIONS		
NO.	REMARKS	DATE



DRAWN BY: BN SCALE: 1" = 20'  
 DESIGNED BY: BN DATE: AUGUST 2008  
 CHECKED BY: JB PROJECT: C06-024  
 DRAWING TITLE:

**LANDSCAPE PLAN**

SHEET NUMBER:  
**L1.2**



