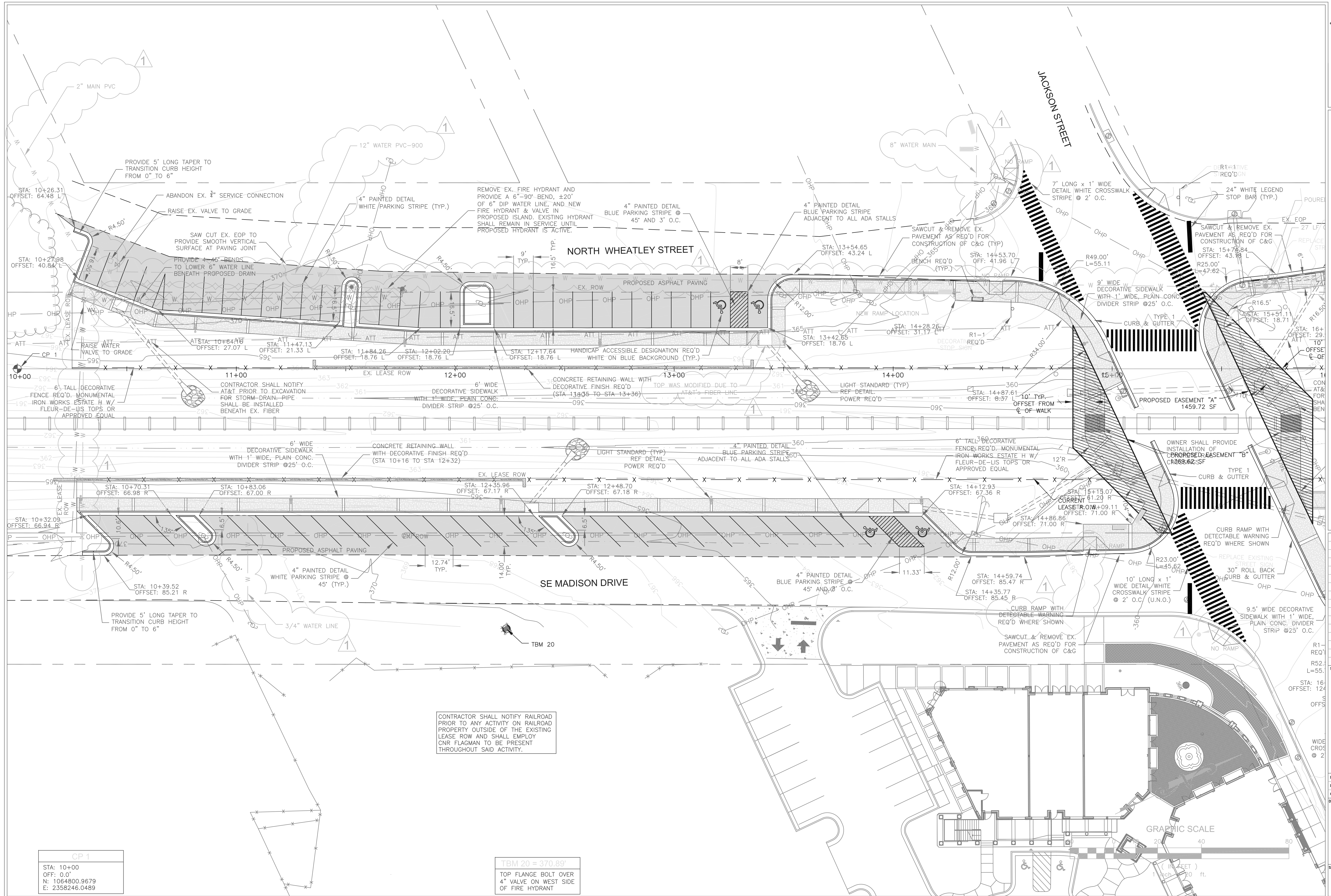


**CITY OF RIDGELAND
 WEST JACKSON ST. OVERLAY
 DISTRICT PARKING IMPROVEMENTS**
 WEI# C06-024



DRAWING REVISIONS		
NO.	REMARKS	DATE
1	AS-BUILT	11-19-10

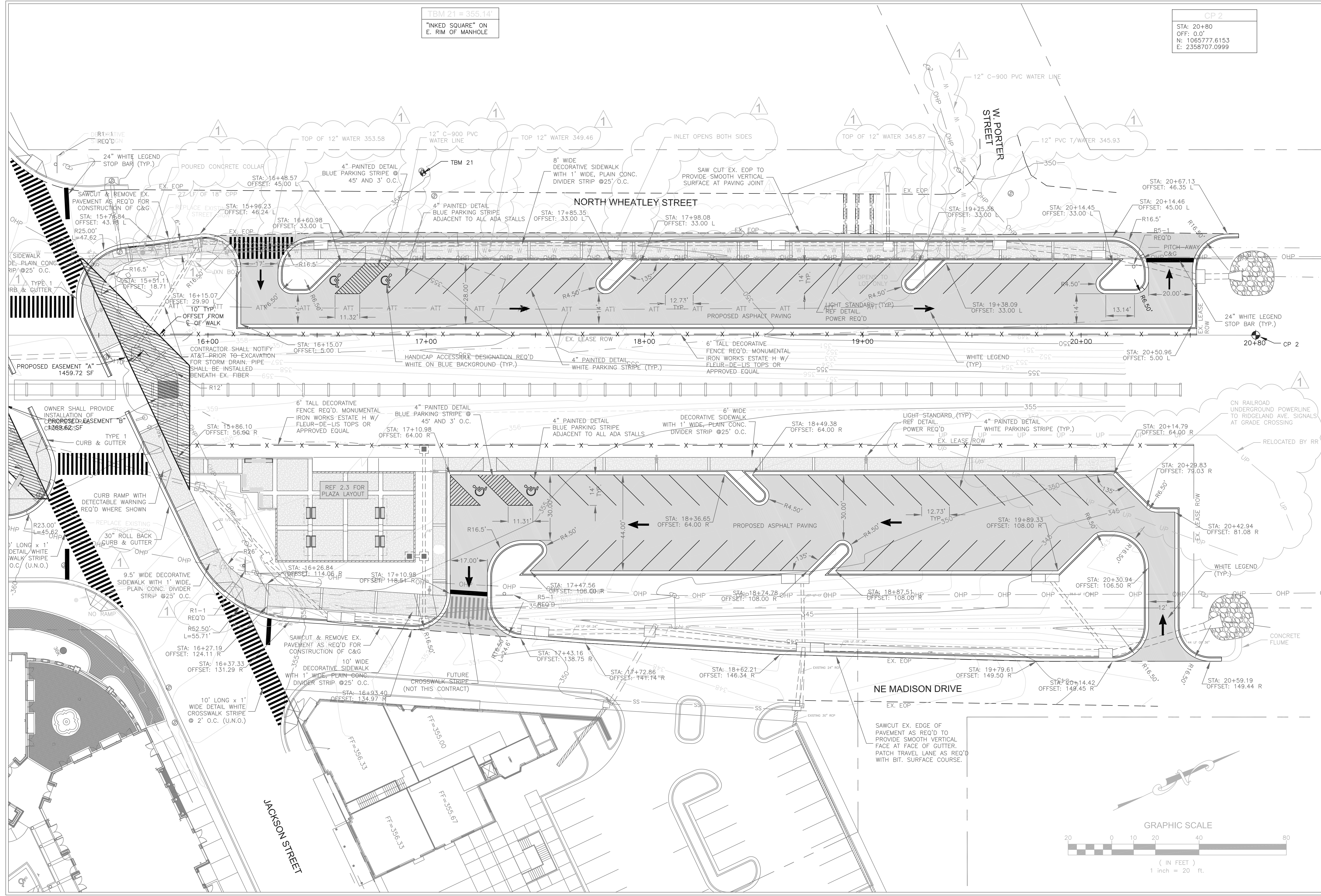
CP 1	STA: 10+00 OFF: 0.0' N: 1064800.9679 E: 2358246.0489
TBM 20 = 370.89'	TOP FLANGE BOLT OVER 4" VALVE ON WEST SIDE OF FIRE HYDRANT

R1-REQ	
R52-L=55.1	
STA: 16+00	OFFSET: 12.4
WIDE CROSS	@ 2'

DRAWN BY: BN SCALE: 1" = 20'
 DESIGNED BY: BN DATE: AUGUST 2006
 CHECKED BY: JB PROJECT: C06-024
 DRAWING TITLE:

LAYOUT & SITE PLAN
 SHEET NUMBER:
C2.1

**CITY OF RIDGELAND
 WEST JACKSON ST. OVERLAY
 DISTRICT PARKING IMPROVEMENTS**
 WEI# C06-024

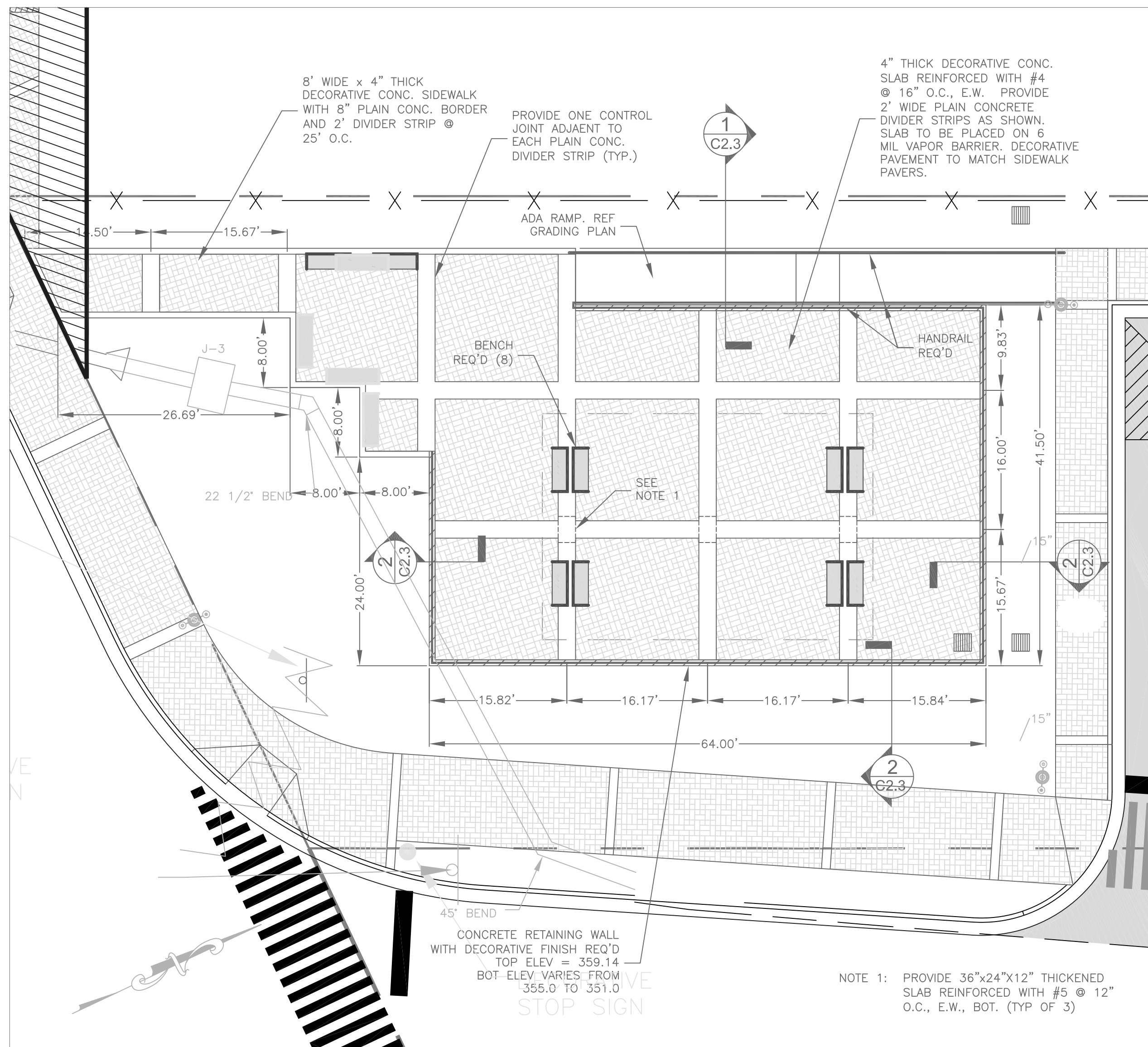


DRAWING REVISIONS		
NO.	REMARKS	DATE
1	AS-BUILT	11-19-10

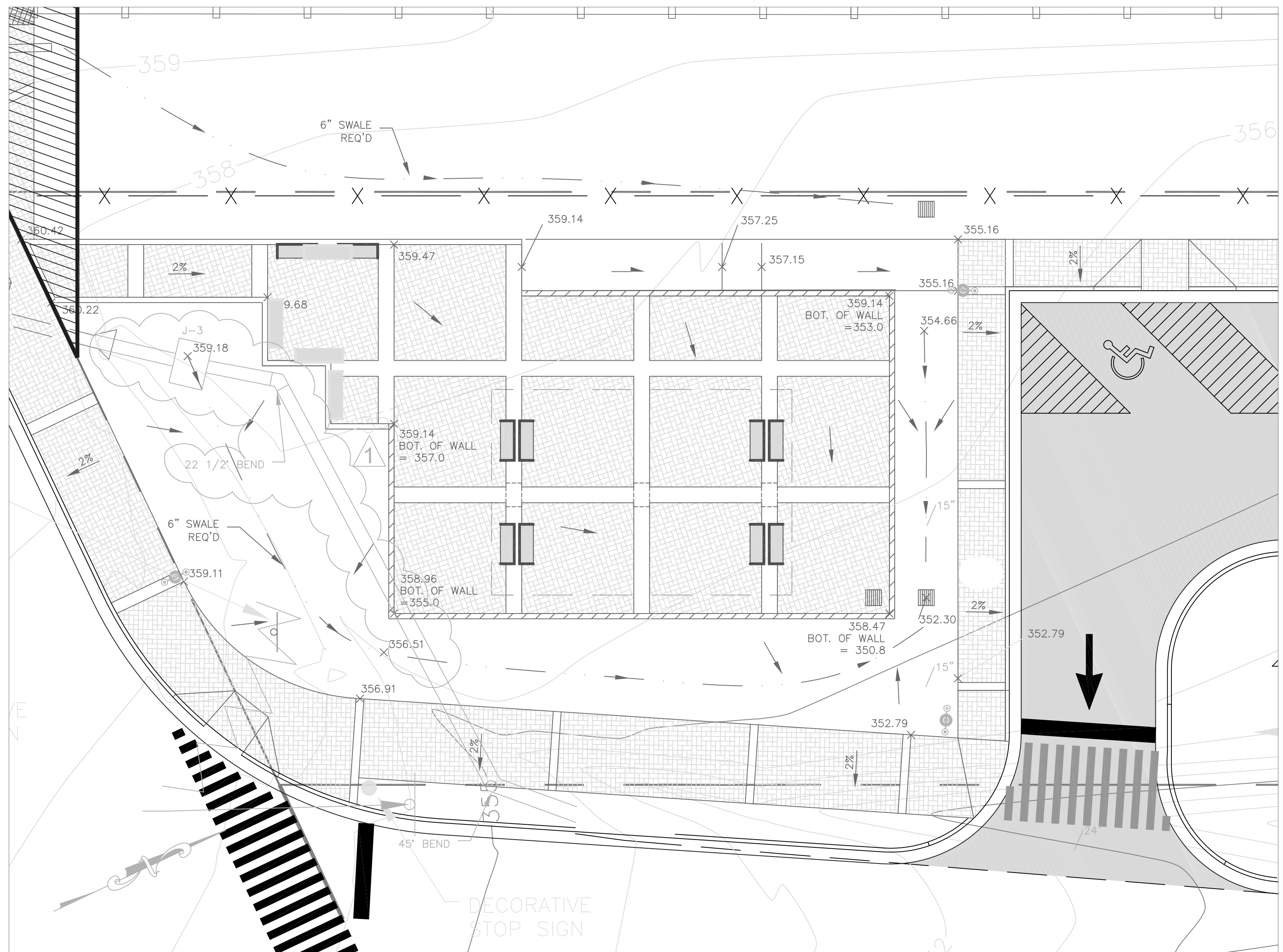
DRAWN BY: BN SCALE: 1" = 20'
 DESIGNED BY: BN DATE: AUGUST 2006
 CHECKED BY: JB PROJECT: C06-024
 DRAWING TITLE:

**LAYOUT &
 SITE PLAN**
 SHEET NUMBER:
C2.2

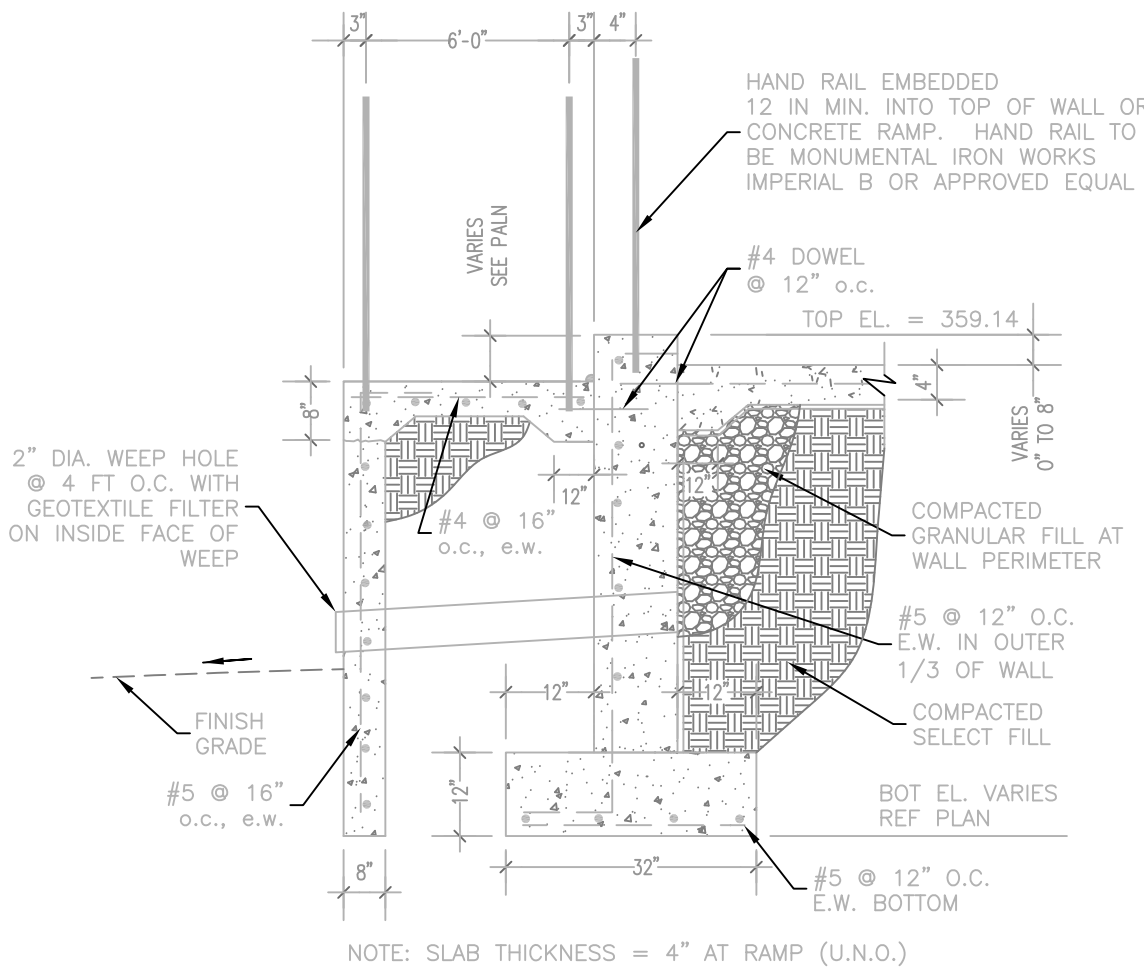
**CITY OF RIDGELAND
 WEST JACKSON ST. OVERLAY
 DISTRICT PARKING IMPROVEMENTS**
 WEI# C06-024



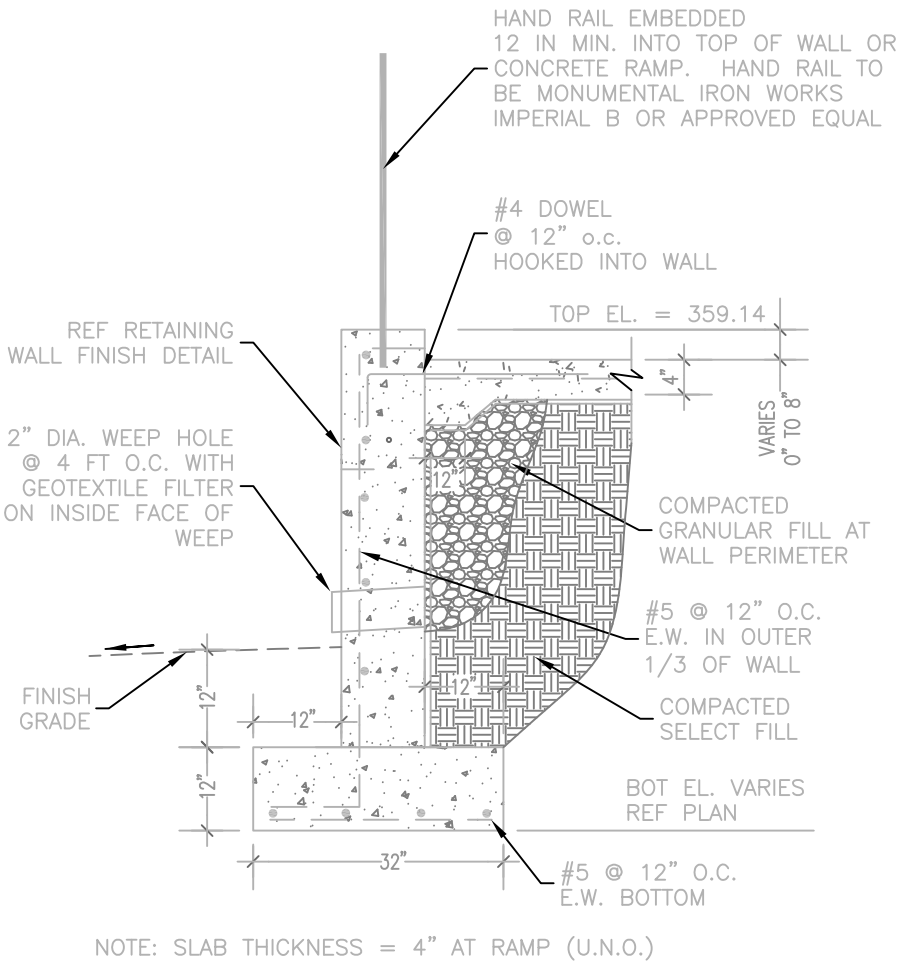
PLAZA LAYOUT PLAN
 SCALE: 1" = 10'



PLAZA GRADING PLAN
 SCALE: 1" = 10'



SECTION @ RAMP
 C2.3



SECTION @ RETAINING WALL
 C2.3

DRAWING REVISIONS		
NO.	REMARKS	DATE
1	AS-BUILT	11-19-10

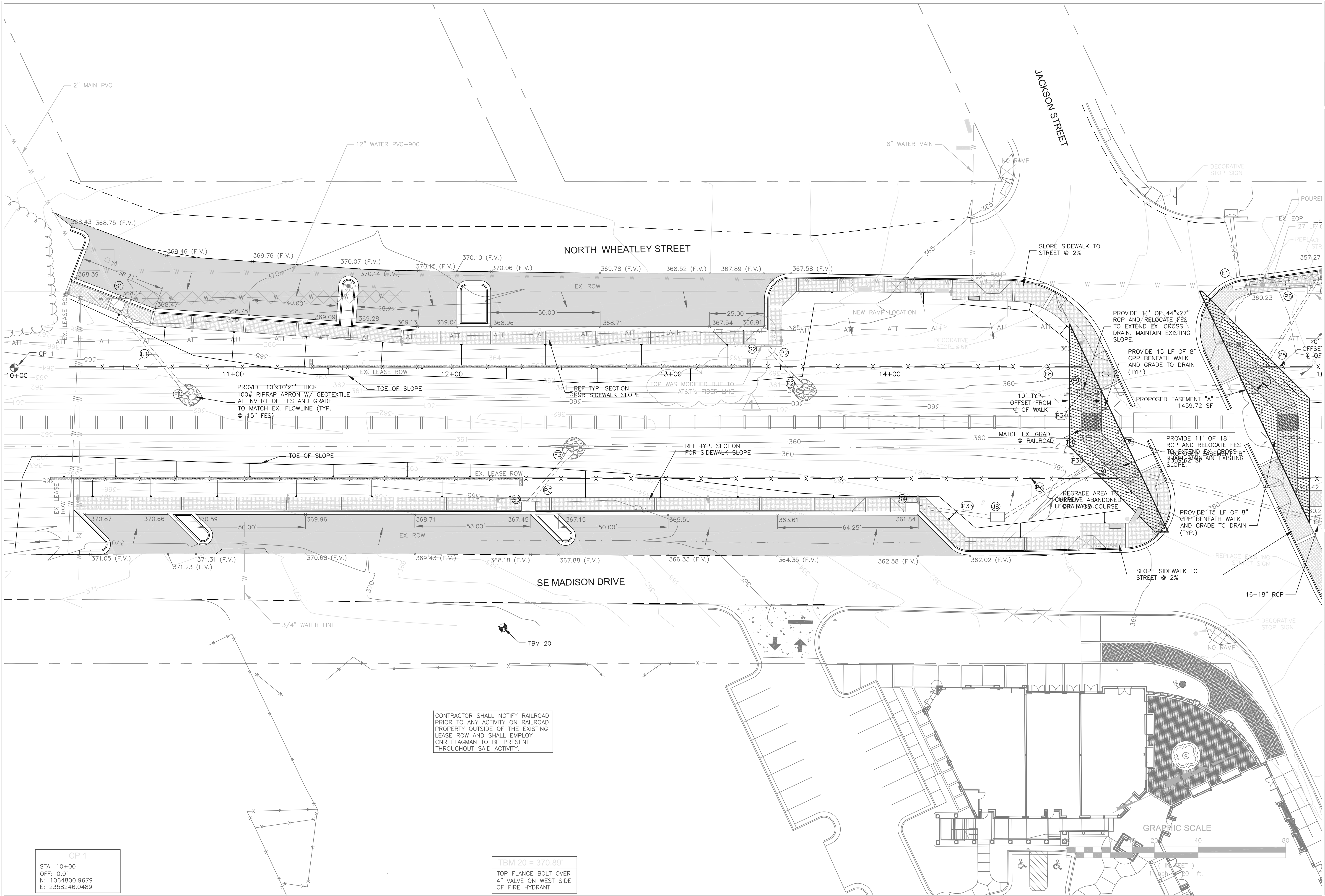
SEAL:

DRAWN BY:	BN	SCALE:	VARIES
DESIGNED BY:	BN	DATE:	AUGUST 2006
CHECKED BY:	JB	PROJECT:	C06-024
DRAWING TITLE:			

**PLAZA LAYOUT,
 SITE, &
 GRADING
 PLAN & DETAILS**

SHEET NUMBER:
C2.3

**CITY OF RIDGELAND
 WEST JACKSON ST. OVERLAY
 DISTRICT PARKING IMPROVEMENTS
 WEI# C06-024**



DRAWING REVISIONS		
NO.	REMARKS	DATE
1	AS-BUILT	11-19-10

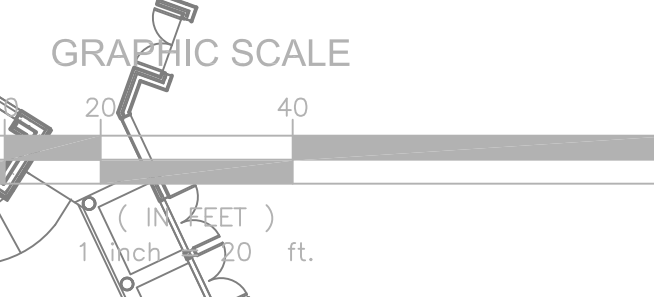
SEAL: _____
 DRAWN BY: BN SCALE: 1" = 20'
 DESIGNED BY: BN DATE: AUGUST 2006
 CHECKED BY: JB PROJECT: C06-024
 DRAWING TITLE: _____

**GRADING &
 DRAINAGE PLAN**
 SHEET NUMBER:
C3.1

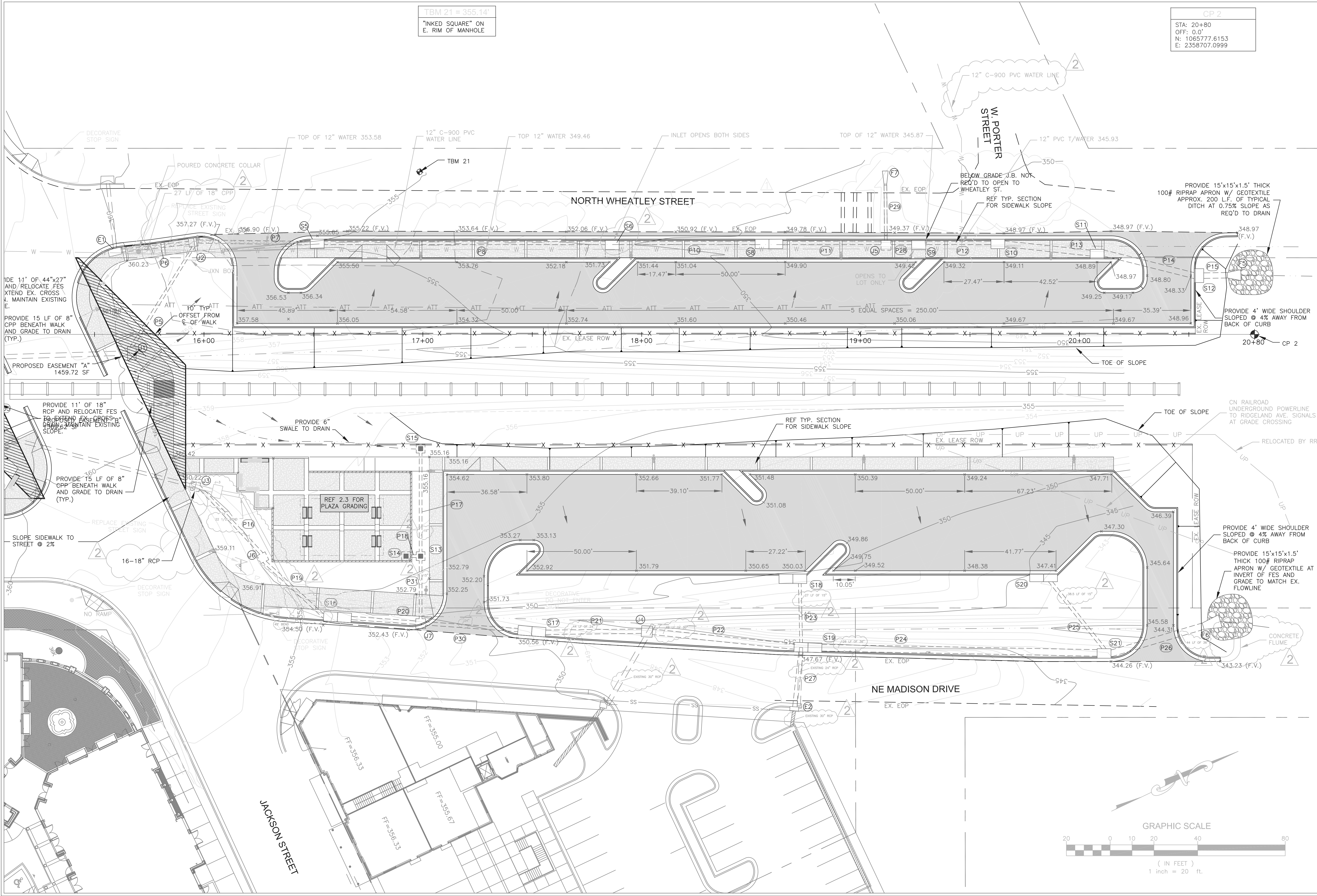
CP 1
 STA: 10+00
 OFF: 0.0'
 N: 1064800.9679
 E: 2358246.0489

TBM 20 = 370.89'
 TOP FLANGE BOLT OVER
 4" VALVE ON WEST SIDE
 OF FIRE HYDRANT

CONTRACTOR SHALL NOTIFY RAILROAD
 PRIOR TO ANY ACTIVITY ON RAILROAD
 PROPERTY OUTSIDE OF THE EXISTING
 LEASE ROW AND SHALL EMPLOY
 CNR FLAGMAN TO BE PRESENT
 THROUGHOUT SAID ACTIVITY.



**CITY OF RIDGELAND
 WEST JACKSON ST. OVERLAY
 DISTRICT PARKING IMPROVEMENTS
 WEI# C06-024**



CP 2
 STA: 20+80
 OFF: 0.0'
 N: 1065777.6153
 E: 2358707.0999

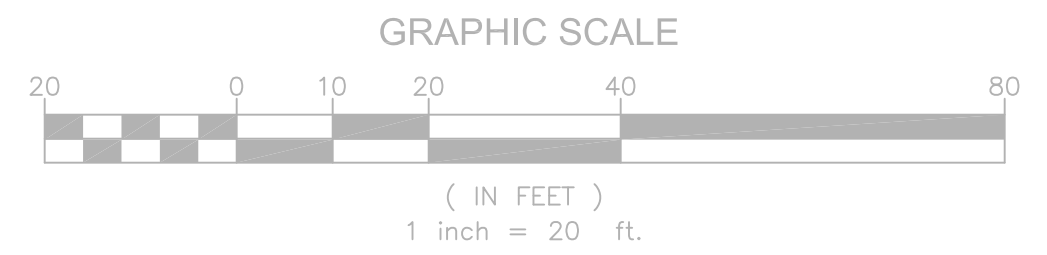
TBM 21 = 355.14'
 "INKED SQUARE" ON
 E. RIM OF MANHOLE

DRAWING REVISIONS		
NO.	REMARKS	DATE
1	STORM DRAIN	11/17/07
2	AS-BUILT	11-19-10

DRAWN BY: BN SCALE: 1" = 20'
 DESIGNED BY: BN DATE: AUGUST 2006
 CHECKED BY: JB PROJECT: C06-024
 DRAWING TITLE:

**GRADING &
 DRAINAGE PLAN**

SHEET NUMBER:
C3.2



REVISED STORM SEWER PIPE SCHEDULE (ADD#1)

PIPE NO.	FROM	INVERT IN	TO	INVERT OUT	DIAMETER	TYPE	LENGTH (FACE TO FACE)	SLOPE	Q, req'd	Q, cap
					(IN)		(FT)	(FT/FT)	(CFS)	(CFS)
P1	S1	362.34	F1	361.64	15	CPP	48	0.0146	1	8.4
P2	S2	361.16	F2	360.61	15	CPP	26	0.0211	1.5	10.7
P3	S3	361.16	F3	360.87	15	CPP	29	0.0096	1.3	7.5
P4	J8	358.40	F4	358.20	15	CPP	48	0.0042	2.5	8.3
P5	J1	355.58	J2	353.35	18	CPP	51.5	0.0430	7	25.8
P6	E1	356.17	J2	353.35	18	CPP	31	0.0910	12	37.5
P7	J2	353.25	S5	352.50	24	CPP	51.5	0.0146	19	32.4
P8	S5	352.40	S6	349.05	24	CPP	102	0.0328	19.5	48.6
P9	S6	348.95	S7	348.58	24	CPP	20	0.0185	20.62	36.5
P10	S7	348.48	S8	346.87	24	CPP	63	0.0256	21.62	42.9
P11	S8	346.77	J5	346.11	24	CPP	45	0.0147	22.75	32.5
P12	S9	345.75	S10	345.53	30	CPP	30	0.0073	38.55	41.5
P13	S10	345.43	S11	345.14	30	CPP	39	0.0074	38.95	41.5
P14	S11	345.04	S12	344.72	30	CPP	42.5	0.0075	39.95	41.5
P15	S12	344.62	F5	344.54	30	CPP	11	0.0073	40.95	41.5
P16	J3	355.95	J6	352.60	18	CPP	42	0.0797	6.5	35.1
P17	S15	351.56	S13	348.33	15	CPP	45	0.0717	0.6	20.5
P18	S14	348.37	S13	348.23	15	CPP	2.7	0.0510	0.5	17.3
P19	J6	352.50	S16	351.35	18	CPP	36	0.0319	7.7	22.2
P20	S16	351.25	J7	348.10	18	CPP	29.5	0.1068	8.3	39.4
P21	S17	347.31	J4	343.92	24	CPP	44	0.0770	10.1	16.3
P22	J4	343.82	S19	342.52	30	CPP	65	0.0200	65.5	68.7
P23	S18	346.79	S19	344.42	15	CPP	27	0.0878	2.0	22.7
P24	S19	342.42	S21	339.78	36	CPP	126	0.0210	86.0	114.5
P25	S20	344.16	S21	341.01	15	CPP	38.5	0.0818	1.7	21.9
P26	S21	339.68	F6	339.13	36	CPP	44	0.0125	88.1	88.4
P27	E2	344.00	S19	343.49	18	RCP	25	0.0204	-	17.8
P28	J5	346.01	S9	345.85	27	CPP	9.5	0.0168	38.2	47.6
P29	F7	347.26	J5	346.10	15	RCP	28.5	0.0407	-	15.4
P30	J7	348.00	S17	347.41	24	CPP	42.5	0.0138	9.4	31.6
P31	S13	348.23	J7	348.10	15	CPP	26.5	0.0050	1.1	5.4
P33	S4	359.01	J8	358.50	15	CPP	32	0.0159	9	8.3
P34	F9	357.74	EX. PIPE	357.53 (F.V.)	44x27	RCP	11	0.0190	7.0	111.8
P35	J9	358.10	EX. PIPE	357.88 (F.V.)	18	RCP	11	0.0200	6.5	17.6
P36	F4	358.25	J9	358.20	18	CPP	9	0.0056	6.5	9.3

REVISED STORM SEWER STRUCTURE SCHEDULE (ADD#1)

STRUCTURE NO.	TYPE	STATION	OFFSET	TOP OF CONCRETE	INVERT OUT	NOTES
S1	TYPE A INLET	10+48	L	368.19	362.34	
S2	TYPE A INLET	13+42	L	367.33	361.16	
S3	TYPE A INLET	12+35	R	367.87	361.16	
S4	TYPE A INLET	14+11	R	362.26	359.01	
S5	TYPE A INLET	16+52	L	356.07	352.40	
S6	TYPE A INLET	17+60	L	352.62	348.95	
S7	TYPE A INLET	17+99	L	352.15	348.48	
S8	TYPE A INLET	18+58	L	350.44	346.77	Double Inlet
S9	TYPE B INLET	19+27	L	349.84	345.75	
S10	TYPE B INLET	19+63	L	349.4	345.43	
S11	TYPE B INLET	20+08	L	349.31	345.04	
S12	TYPE B INLET	20+55	L	348.75	344.62	
S13	GRATE INLET	16+99	101.5' R	352.94	348.23	24" x 24" Grate Inlet (East Jordan Iron Works 5110 M4 or Aproved Equal)
S14	GRATE INLET	16+92.3	101.3' R	358.47	348.37	24" x 24" Grate Inlet (East Jordan Iron Works 5110 M5 or Aproved Equal)
S15	GRATE INLET	17+04	52' R	354.66	351.66	24" x 24" Grate Inlet (East Jordan Iron Works 5110 M4 or Aproved Equal)
S16	TYPE A INLET	16+58	R	354.92	351.25	Double Inlet
S17	TYPE A INLET	17+46	R	350.98	347.31	Double Inlet
S18	TYPE A INLET	18+72	R	350.46	346.79	Double Inlet
S19	TYPE B INLET	18+73	R	348.09	342.42	Double Inlet
S20	TYPE A INLET	19+87	R	347.83	344.16	Double Inlet
S21	TYPE B INLET	20+11	R	344.68	339.68	
J1	JB-1	15+67	R	359.70	355.58	OUTSIDE DIMENSIONS: 6'L x 4'W x 4'-3"T
J2	JB-1	15+95	L	356.00	353.25	OUTSIDE DIMENSIONS: 4'L x 4'W x 3'-5"T
J3	JB-1	15+96	R	358.70	355.95	OUTSIDE DIMENSIONS: 4'L x 4'W x 3'-5"T
J4	JB-1	18+02	135.5' R	347.82	343.82	OUTSIDE DIMENSIONS: 5'L x 5'W x 5'T
J5	JB-1	19+11	38' L	349.01	346.01	OUTSIDE DIMENSIONS: 4'L x 4'W x 3'-5"T
J6	JB-1	16+27	102' R	355.50	352.50	OUTSIDE DIMENSIONS: 4'L x 4'W x 3'-5"T
J7	JB-1	16+99	132' R	351.00	348.00	OUTSIDE DIMENSIONS: 4'L x 4'W x 3'-5"T
J8	JB-1	14+46	68' R	361.07	358.40	OUTSIDE DIMENSIONS: 4'L x 4'W x 3'-5"T
J9	JB-1	14+95	42.5' R	360.35	358.10	OUTSIDE DIMENSIONS: 4'L x 4'W x 3'T
F1	15" FES	10+78	L	-	361.61	
F2	15" FES	13+42	L	-	360.57	
F3	15" FES	12+35	R	-	360.85	
F4	18" FES	14+80	R	-	358.28	
F5	30" FES	20+74	27' L	-	344.50	
F6	36" FES	20+64	131' R	-	339.00	
F7	15" FES	19+11	74.5' L	-	347.26	INVERT IN = 347.5
F9	44"x27" FES	14+80	R	-	357.86	

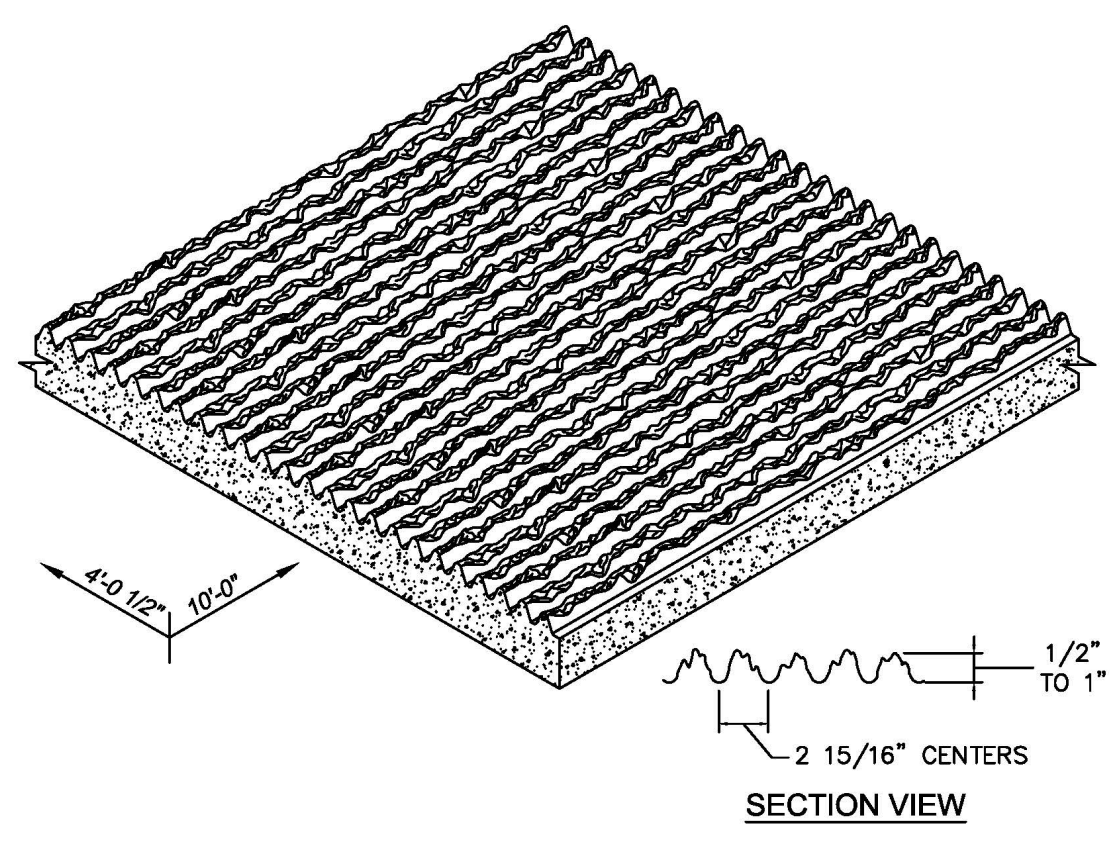
CITY OF RIDGELAND
 WEST JACKSON ST. OVERLAY
 DISTRICT PARKING IMPROVEMENTS
 WEI# C06-024

DRAWING REVISIONS		
NO.	REMARKS	DATE

SCALE:
 DRAWN BY: BN
 DESIGNED BY: BN
 CHECKED BY: JB
 DRAWING TITLE:
 SCALE: N.T.S.
 DATE: AUGUST 2006
 PROJECT: C06-024

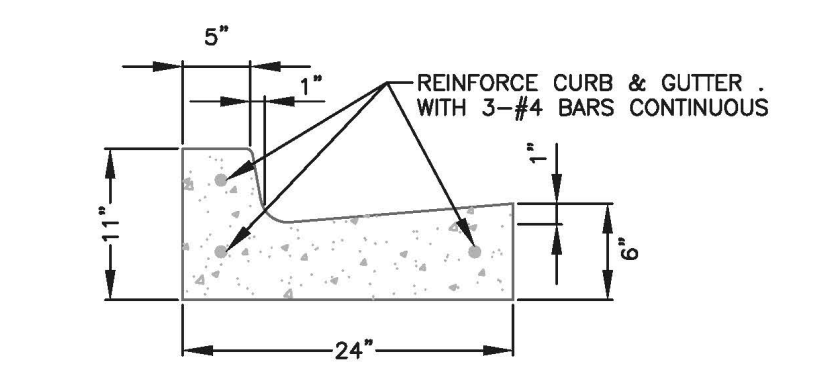
STORM SEWER SCHEDULES

SHEET NUMBER:
C3.3

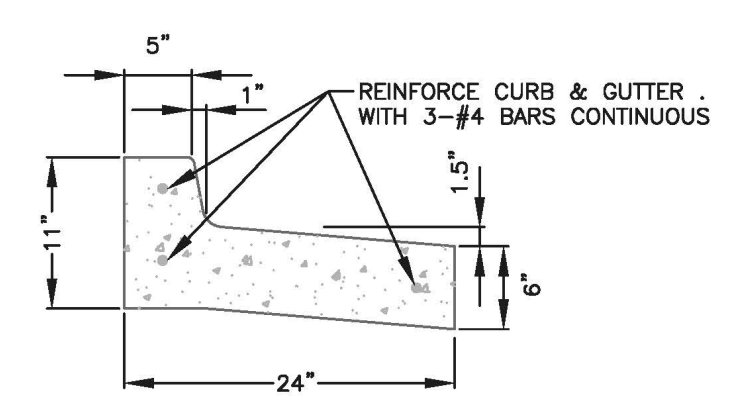


NOTE: ALL RETAINING WALLS TO UTILIZE AN 8\"/>

RETAINING WALL FINISH - ISOMETRIC VIEW
 SCALE: N.T.S.

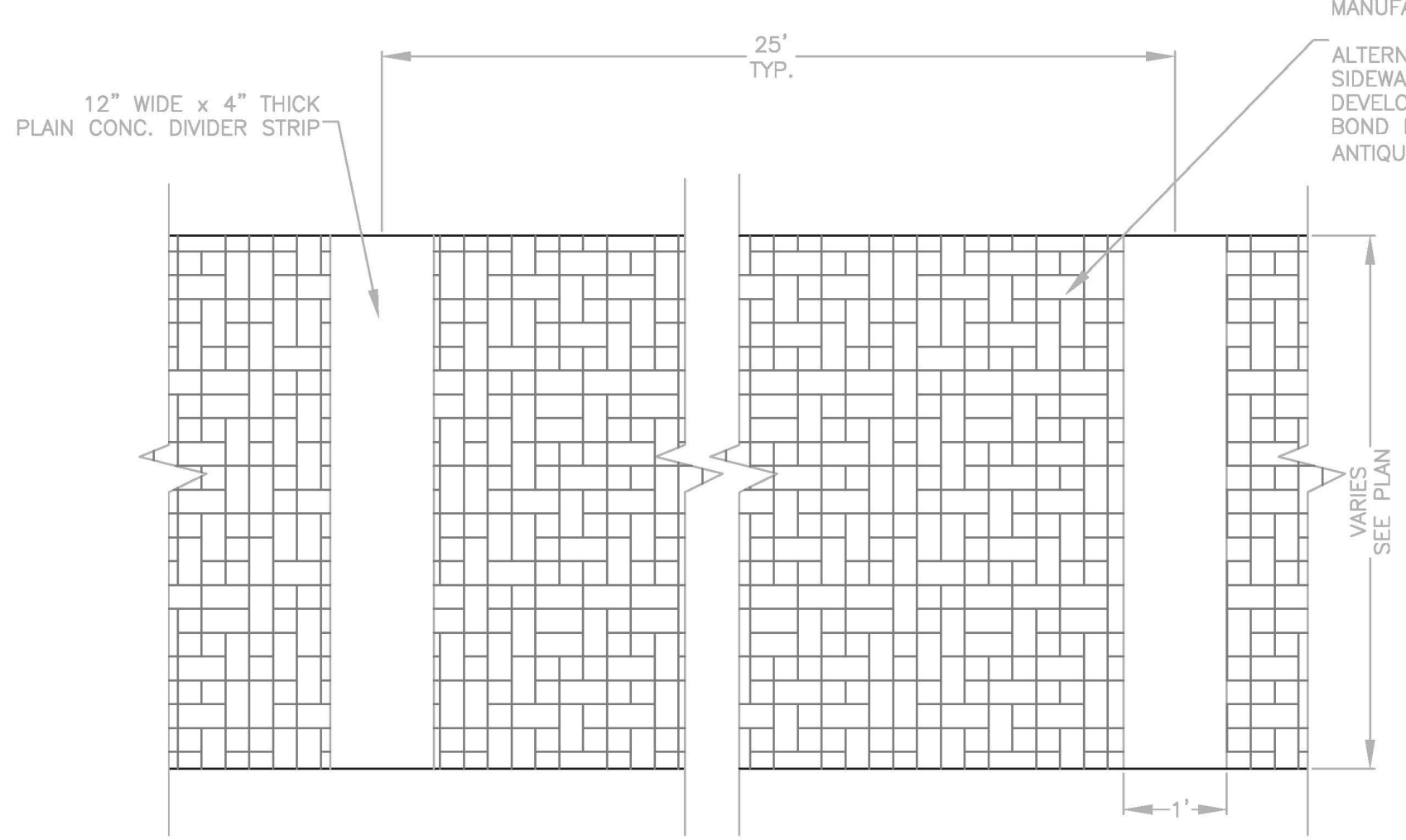


STANDARD CURB & GUTTER DETAIL
 SCALE: N.T.S.

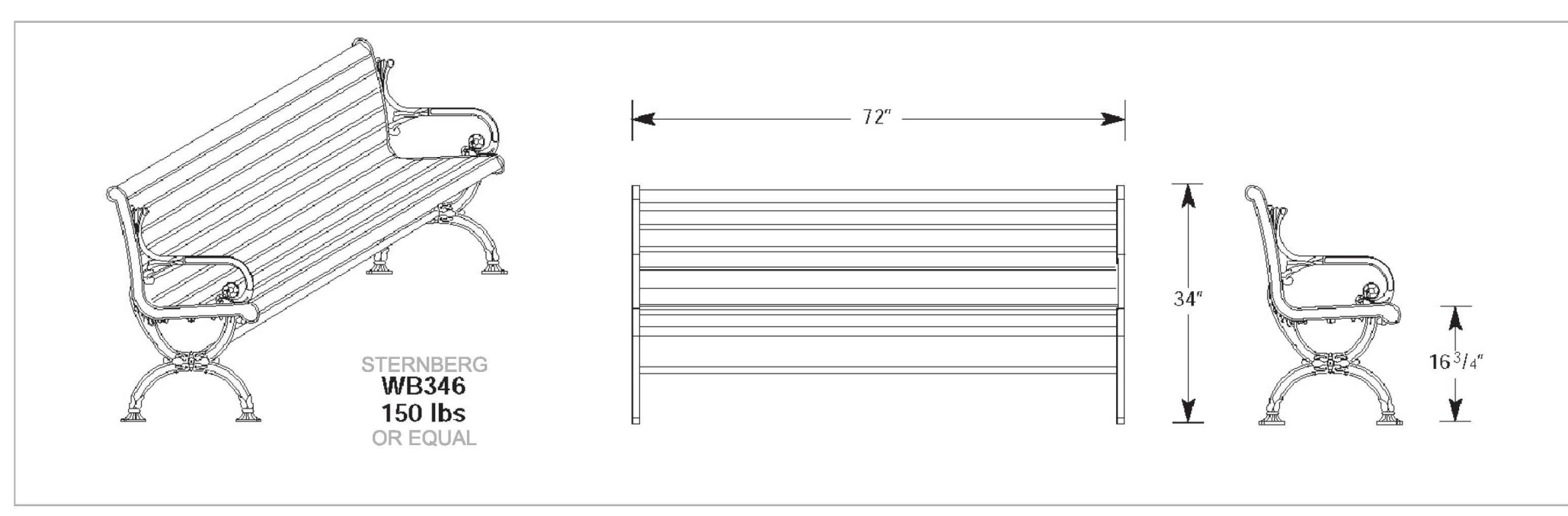


STANDARD PITCH-AWAY CURB & GUTTER DETAIL
 SCALE: N.T.S.

ALTERNATE 1: CONCRETE PAVERS, PAVESTONE HERITAGE SERIES OAKS BLEND OR APPROVED EQUAL, INSTALLED PER MANUFACTURERS' RECOMMENDATIONS
 ALTERNATE 2: DECORATIVE CONCRETE SIDEWALK TO MATCH ADJACENT DEVELOPMENT, RED BRICK RUNNING BOND PATTERN WITH CONTRASTING ANTIQUED "MORTAR JOINTS".



DECORATIVE SIDEWALK DETAIL
 SCALE: N.T.S.

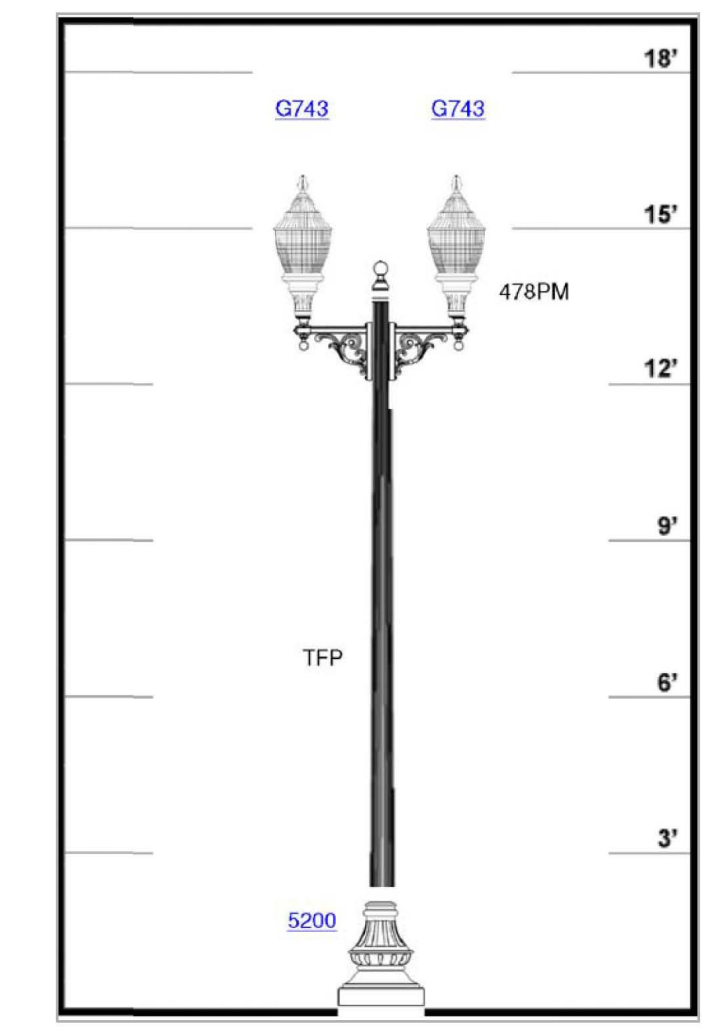


DECORATIVE BENCH DETAIL
 SCALE: N.T.S.

STERNBERG

Luminaire:	G743
Arm Type:	478PM
Shaft Type:	TFP
Shaft Height:	14
Base Type:	5200

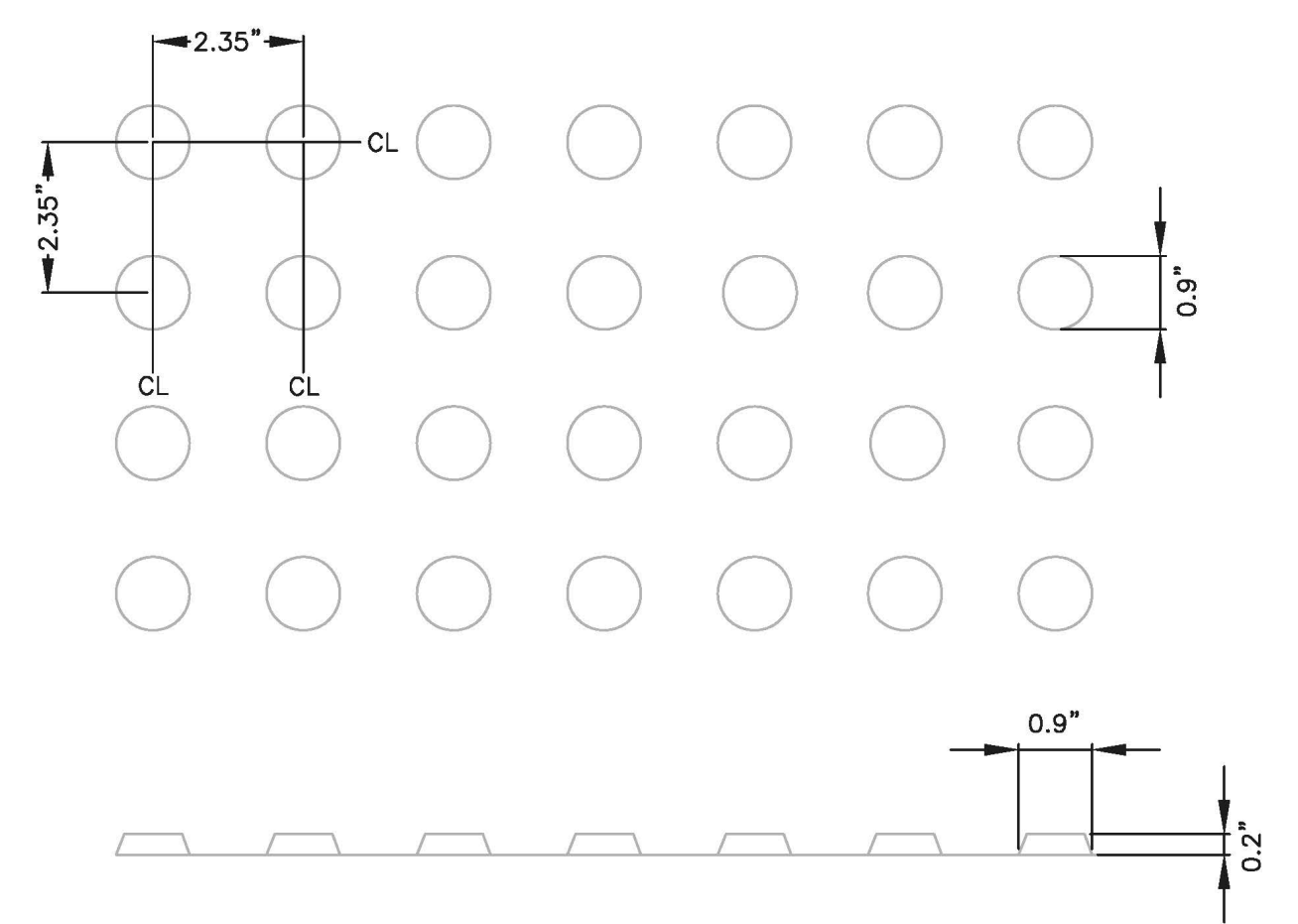
ALTERNATE MANUFACTURES OR MODELS MAY BE APPROVED BY OWNER



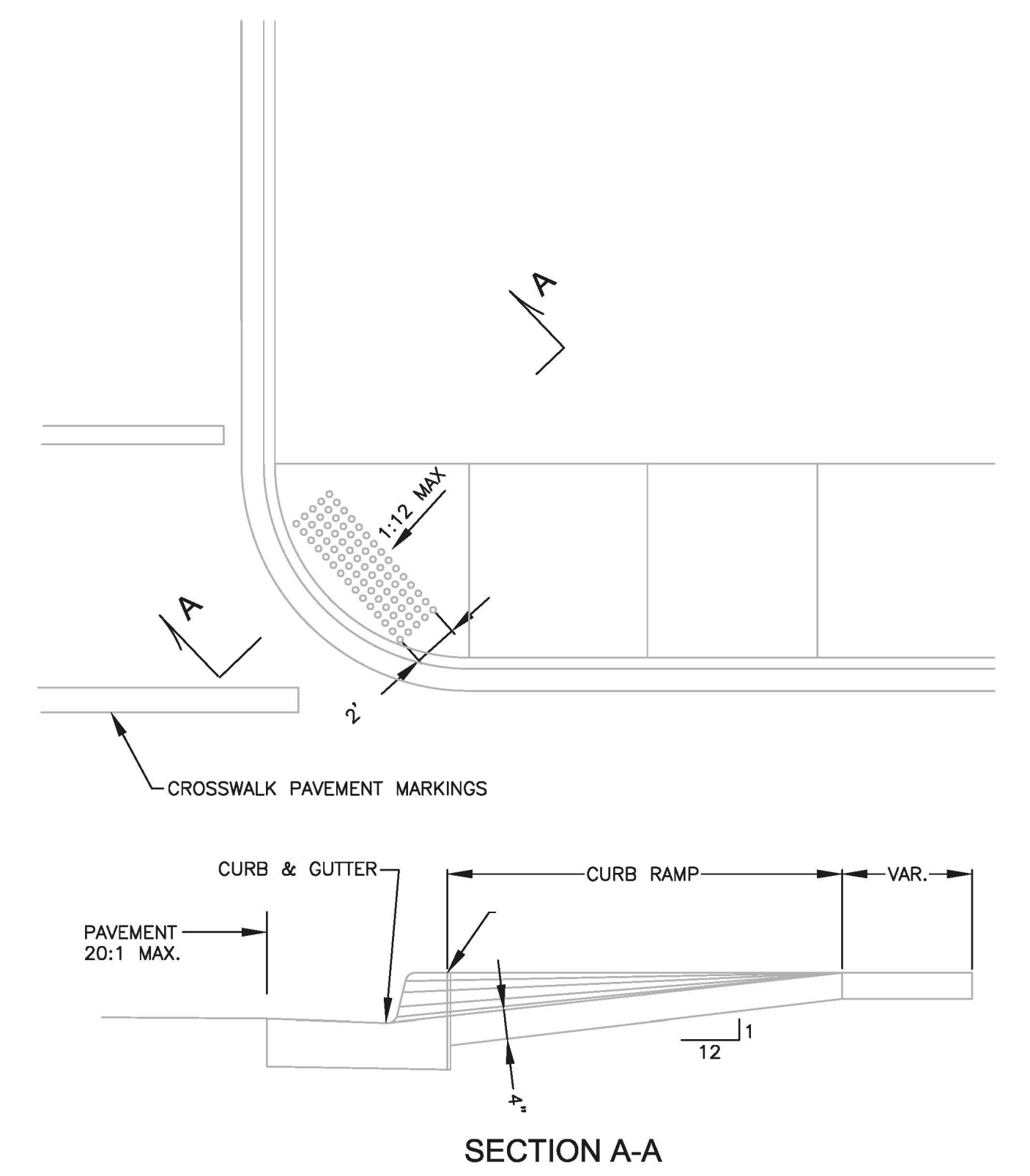
LIGHTING AND SIGNAGE DETAIL
 SCALE: N.T.S.

GENERAL NOTES

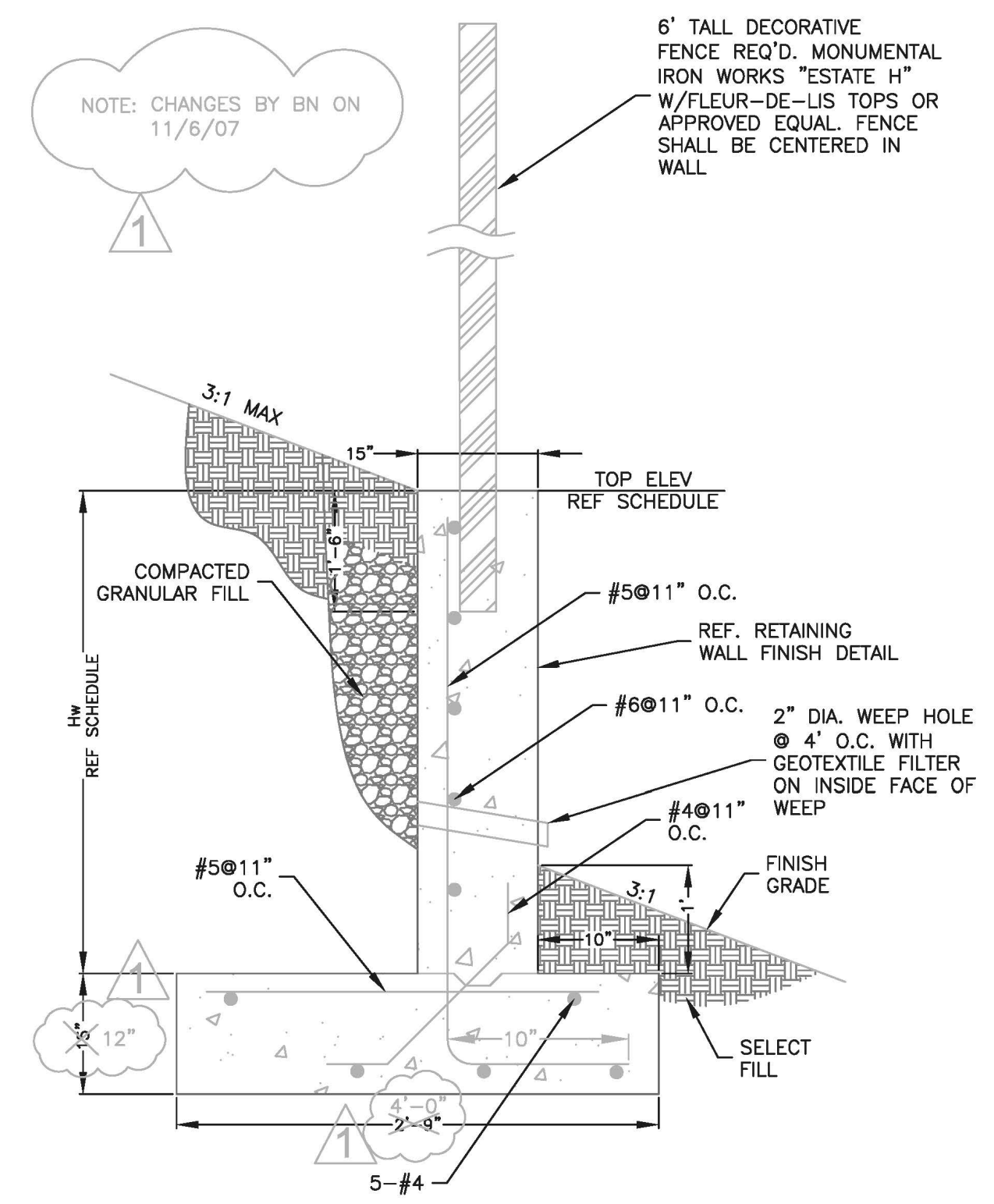
- FOR DETECTABLE WARNING GUIDELINES SEE THE AMERICAN WITH DISABILITIES ACT ACCESSIBLE GUIDELINE (ADAAG--REGULATORY STANDARD)
- PLACEMENT OF THE DETECTABLE WARNINGS SHOULD BE A MAXIMUM OF 6 TO 8 INCHES FROM THE CURB LINE
- LOCATION AND TYPE OF CURB RAMP SHALL BE AS SHOWN ON THE PLANS OR AS DIRECTED.
- THE CURB RAMP SHALL BE PAID FOR AS SIDEWALK.
- THE THICKNESS OF THE CURB RAMP SHALL BE A MINIMUM OF 4 INCHES.
- ALL RAMP SLOPES SHALL NOT BE STEEPER THAN 12:1
- THE MATERIALS USED FOR DETECTABLE WARNINGS SHALL CONTRAST VISUALLY WITH ADJOINING SURFACES AND BE AN INTEGRAL PART OF THE WALKING SURFACE.



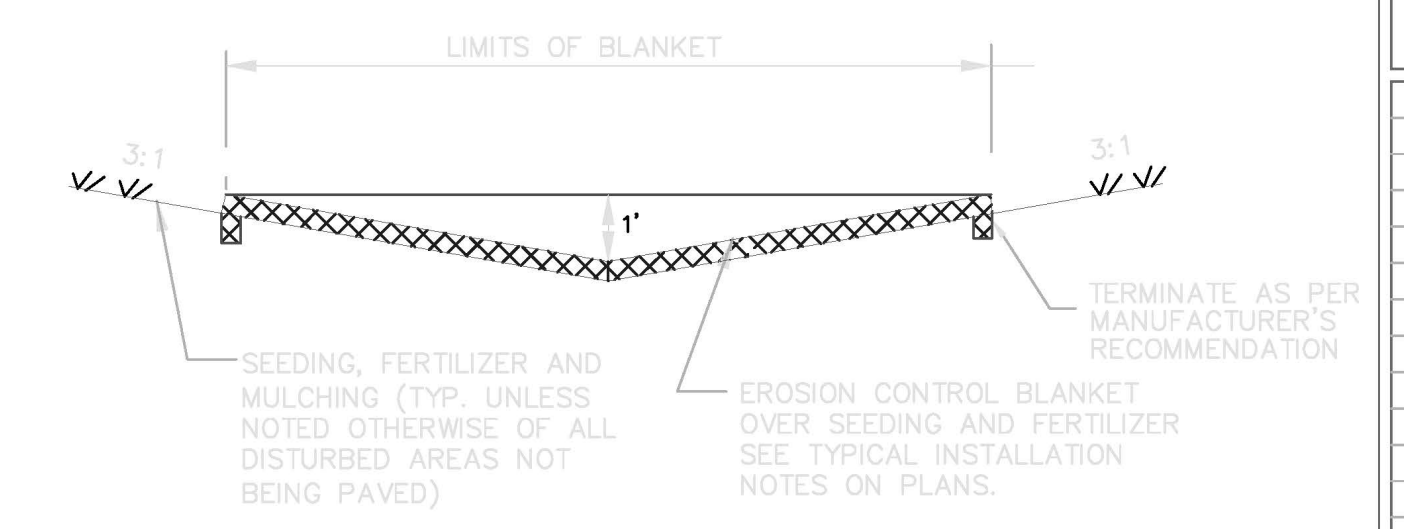
DOME SPACING
 SCALE: N.T.S.



HANDICAP RAMP DETAILS
 PROVIDE HANDICAPPED RAMP W/ DETECTABLE WARNINGS @ EACH DRIVEWAY/ROADWAY EXPANSION JOINT REQ'D.



TYPICAL SECTION AT CONCRETE RETAINING WALL
 SCALE: N.T.S.



TYPICAL DITCH SECTION
 SCALE: N.T.S.

STATION	TOP ELEV	Hw (ft)	BOT ELEV
OFFSET RIGHT (SE MADISON DR)			
STA 10+15 - STA 10+28	VARIABLES	VARIABLES	
	365.5 - 368.5	1 - 4	363.25
STA 10+27 - STA 11+10	368.5	4	363.25
STA 11+35 - STA 11+60	367.5	3.5	362.75
STA 11+60 - STA 11+85	367.0	3	362.75
STA 11+85 - STA 12+10	366.5	2.5	362.75
STA 12+10 - STA 12+35	366	2.5	362.25
OFFSET LEFT (SW WHEATLEY ST)			
STA 11+35 - STA 11+55	365.25	2	362
STA 11+55 - STA 12+35	366.25	3	362
STA 12+35 - STA 12+85	366.25	3.5	361.5
STA 12+85 - STA 13+10	365.75	3	361.5
STA 13+10 - STA 13+35	364.75	2	361.5

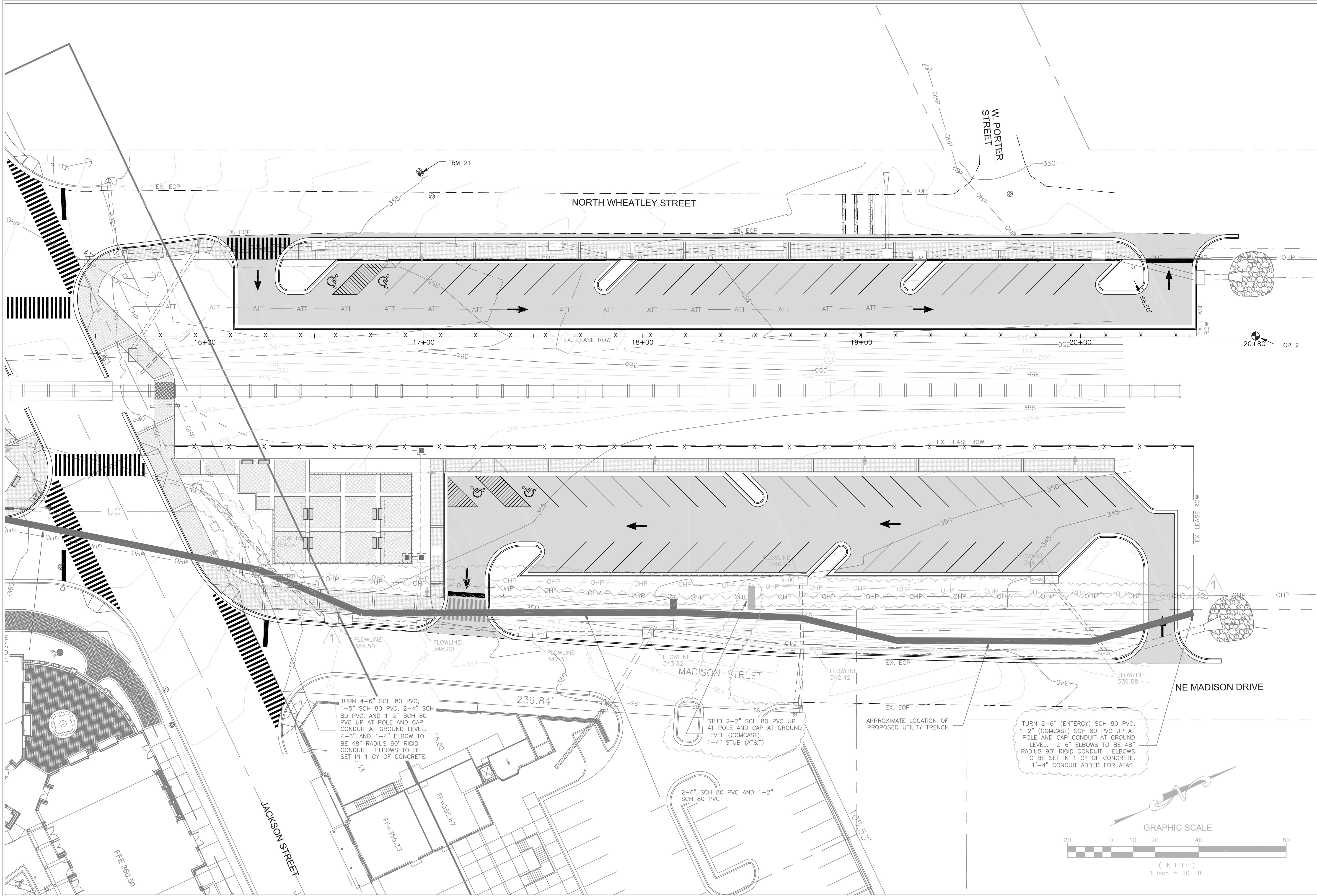
DRAWING REVISIONS

NO.	REMARKS	DATE
1	AS-BUILT	11-19-10

SEAL:

DRAWN BY: BN SCALE: N.T.S.
 DESIGNED BY: BN DATE: AUGUST 2006
 CHECKED BY: JB PROJECT: C06-024
 DRAWING TITLE:

CITY OF RIDGELAND
WEST JACKSON ST. OVERLAY
DISTRICT PARKING IMPROVEMENTS
 WEI# C06-024



DRAWING REVISIONS		
NO.	REMARKS	DATE
1	AS-BUILT	11-19-10

SEAL:	
DRAWN BY:	BN
DESIGNED BY:	BN
CHECKED BY:	JB
DRAWING TITLE:	

SCALE:	1" = 20'
DATE:	AUGUST 2006
PROJECT:	C06-024

UTILITY TRENCH PLAN

SHEET NUMBER:
C6.2

