

**INTERSTATE 55 FRONTAGE ROADS
 UTILITY RELOCATION
 FOR
 CITY OF RIDGELAND, MISSISSIPPI**

LEGEND

	WATER BACKFLOW PREVENTOR		EXISTING POWER POLE		PROPERTY LINE
	WATER METER		EXISTING LAMP POLE		EXISTING FENCE
	FIRE HYDRANT		EXISTING LIGHT POLE		EXISTING R.O.W. MARKER
	WATER VALVE		TRAFFIC SIGNAL POLE		EXISTING R.O.W. LINE
	EXISTING WATER LINE		TRANSFORMER		PROPOSED R.O.W. MARKER
	IRRIGATION VALVE		EXISTING UNDERGROUND POWER LINE		PROPOSED R.O.W. LINE
	EXISTING IRRIGATION LINE		TELEPHONE PEDESTAL		PROPOSED CURB & E.O.P.
	PROPOSED WATER LINE		EXISTING TELEPHONE LINE		PROPOSED SIDEWALK
	EXISTING SEWER MANHOLE		MANHOLE (UNKNOWN TYPE)		PROPOSED RETAINING WALL
	PROPOSED SEWER LINE		EXISTING SHRUB / TREE		PROPOSED GUARDRAIL
	EXISTING CURB INLET		EXISTING TREELINE		
	PROPOSED CURB / SURFACE INLET		EXISTING STREAM / DITCH		

NOTES:
 CONTRACTOR TO VERIFY WATERLINE LOCATIONS IN FIELD WITH ENGINEER BEFORE INSTALLING.
 THE CITY OF RIDGELAND'S EXISTING WATER AND SEWER LINES ARE DEPICTED AS THEY WERE LOCATED BY THE CITY'S PUBLIC WORKS DEPARTMENT.
 BASE MAP INFORMATION FOR THE PROJECT DRAWINGS WAS PROVIDED BY THE MISSISSIPPI DEPARTMENT OF TRANSPORTATION. WAGGONER ENGINEERING, INC. MAKES NO GUARANTEE AS TO THE ACCURACY OF THIS INFORMATION.
 THE APPROXIMATE LOCATION OF KNOWN UNDERGROUND UTILITIES ARE SHOWN ON THE PLANS. IN ADDITION TO THE UTILITIES SHOWN, THERE MAY ALSO BE ADDITIONAL UNDERGROUND UTILITIES WHICH HAVE NOT BEEN DETECTED. IT SHALL BE THE RESPONSIBILITY OF THE CONTRACTOR TO CONTACT ALL UTILITY COMPANIES (CALL MISSISSIPPI ONE-CALL) AND THE CITY OF RIDGELAND PUBLIC WORKS DEPARTMENT TO GIVE NOTIFICATION OF INTENT TO EXCAVATE IN THE AREA OF THE PROJECT. FAILURE BY THE CONTRACTOR TO NOTIFY SAID COMPANIES SHALL MAKE THE CONTRACTOR LIABLE UNDER STATE LAW FOR ANY DAMAGES INCURRED TO UNDERGROUND UTILITIES.

ALL WATERLINES TO BE INSTALLED AT A MINIMUM OF 36" BELOW GROUND UNLESS OTHERWISE NOTED.

THE CONTRACTOR SHALL MAINTAIN A 10 FOOT HORIZONTAL SEPARATION AND AN 18" VERTICAL SEPARATION BETWEEN THE TOP OF ANY SANITARY SEWER LINE AND THE BOTTOM OF ANY WATER LINE.

CONTRACTOR TO NOTIFY CITY OF RIDGELAND PUBLIC WORKS DEPARTMENT AT LEAST 48 HOURS BEFORE MAKING CONNECTION TO ANY EXISTING WATERLINE.

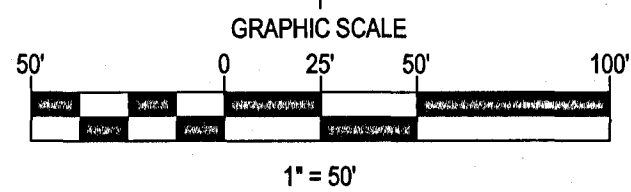
NEW WATERLINES SHALL NOT BE PLACED IN SERVICE UNTIL TWO (2) CONSECUTIVE SAMPLES OF WATER ARE FOUND TO MEET THE STATE HEALTH DEPARTMENT STANDARDS, AND THE LINES HAVE SUCCESSFULLY COMPLETED HYDROSTATIC TESTING.

ANY WATERLINE TO BE ABANDONED SHALL BE CAPPED ON EACH END.

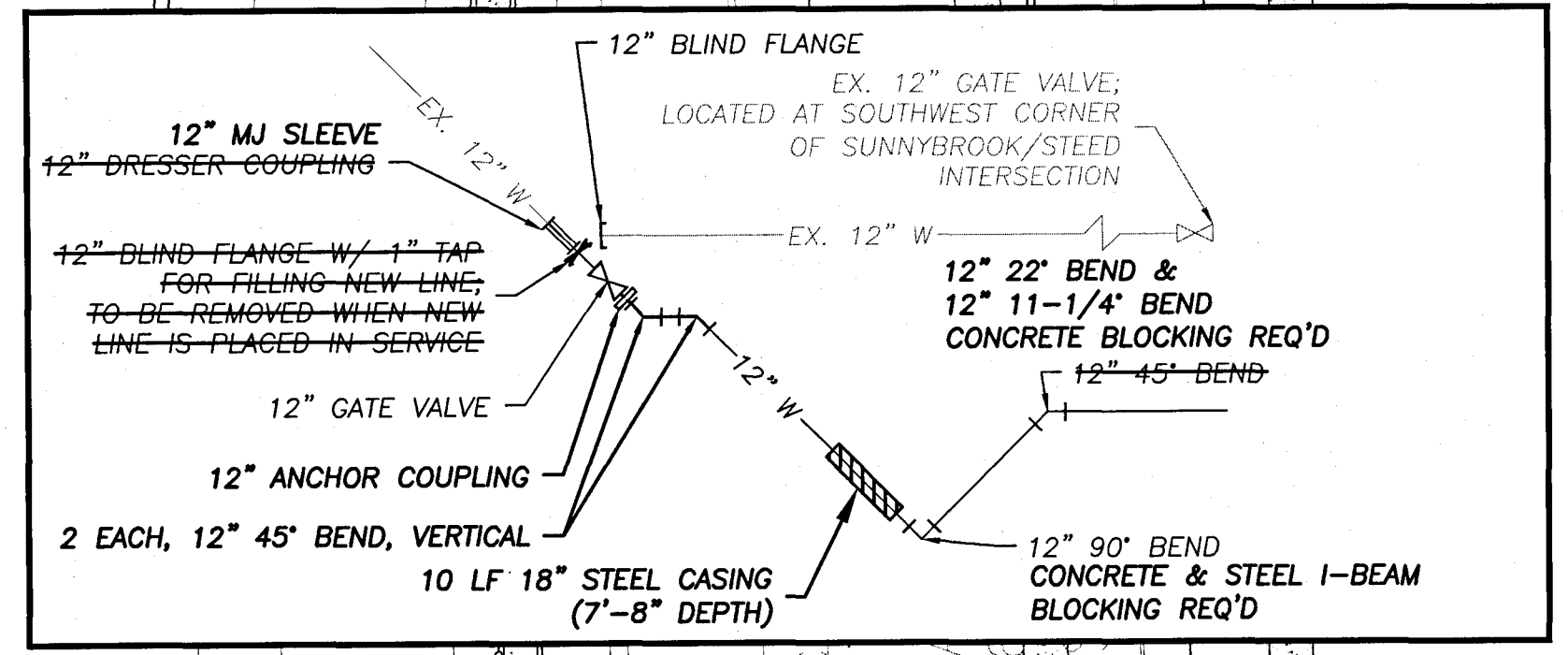
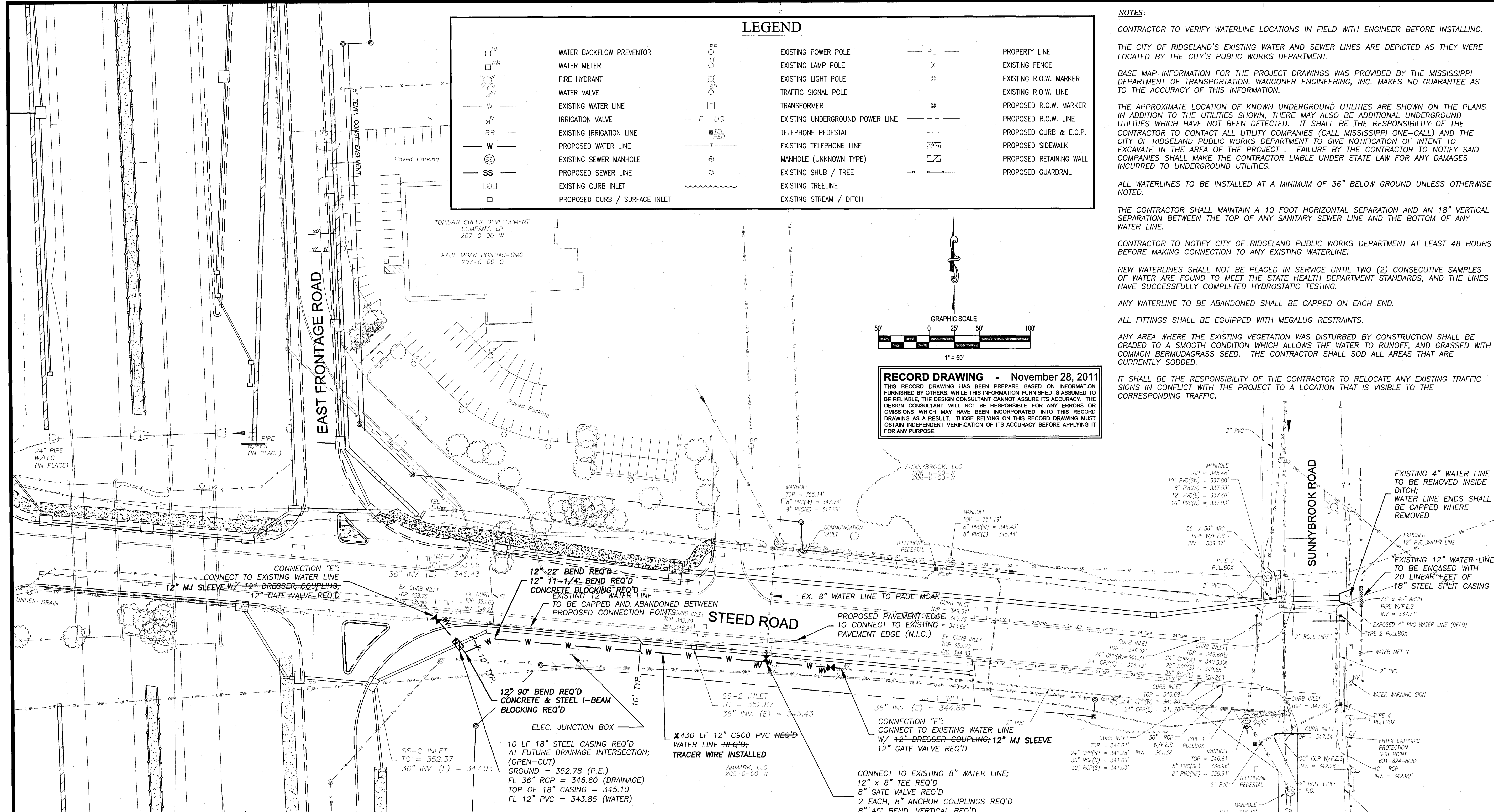
ALL FITTINGS SHALL BE EQUIPPED WITH MEGALUG RESTRAINTS.

ANY AREA WHERE THE EXISTING VEGETATION WAS DISTURBED BY CONSTRUCTION SHALL BE GRADED TO A SMOOTH CONDITION WHICH ALLOWS THE WATER TO RUNOFF, AND GRASSED WITH COMMON BERMUDAGRASS SEED. THE CONTRACTOR SHALL SOD ALL AREAS THAT ARE CURRENTLY SODDED.

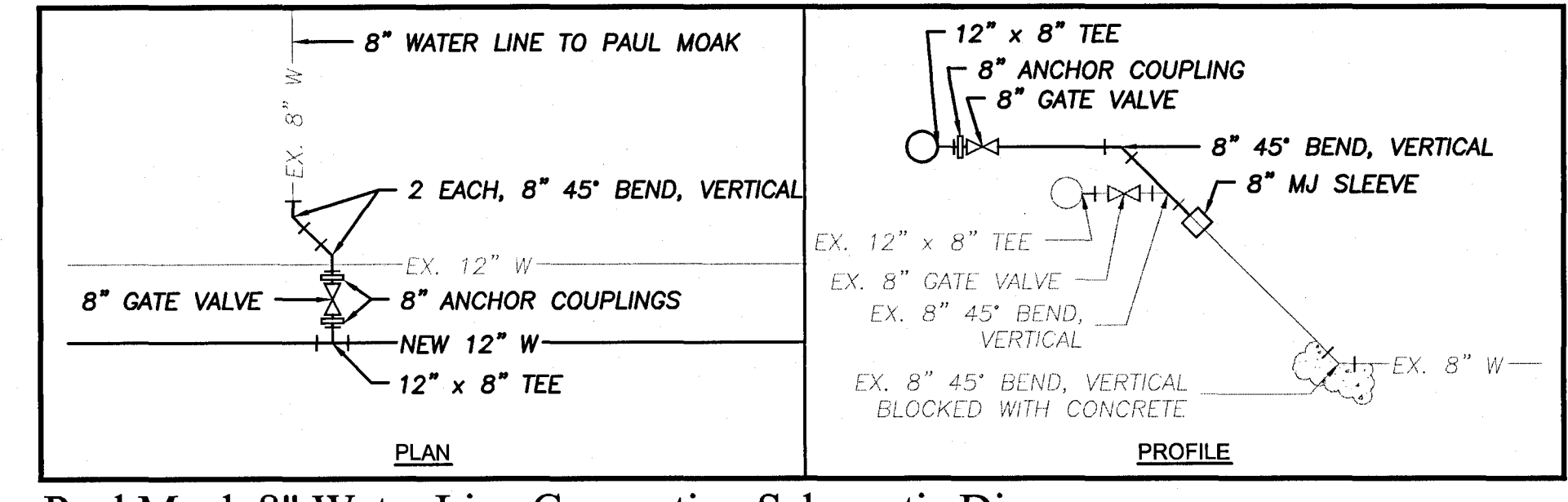
IT SHALL BE THE RESPONSIBILITY OF THE CONTRACTOR TO RELOCATE ANY EXISTING TRAFFIC SIGNS IN CONFLICT WITH THE PROJECT TO A LOCATION THAT IS VISIBLE TO THE CORRESPONDING TRAFFIC.



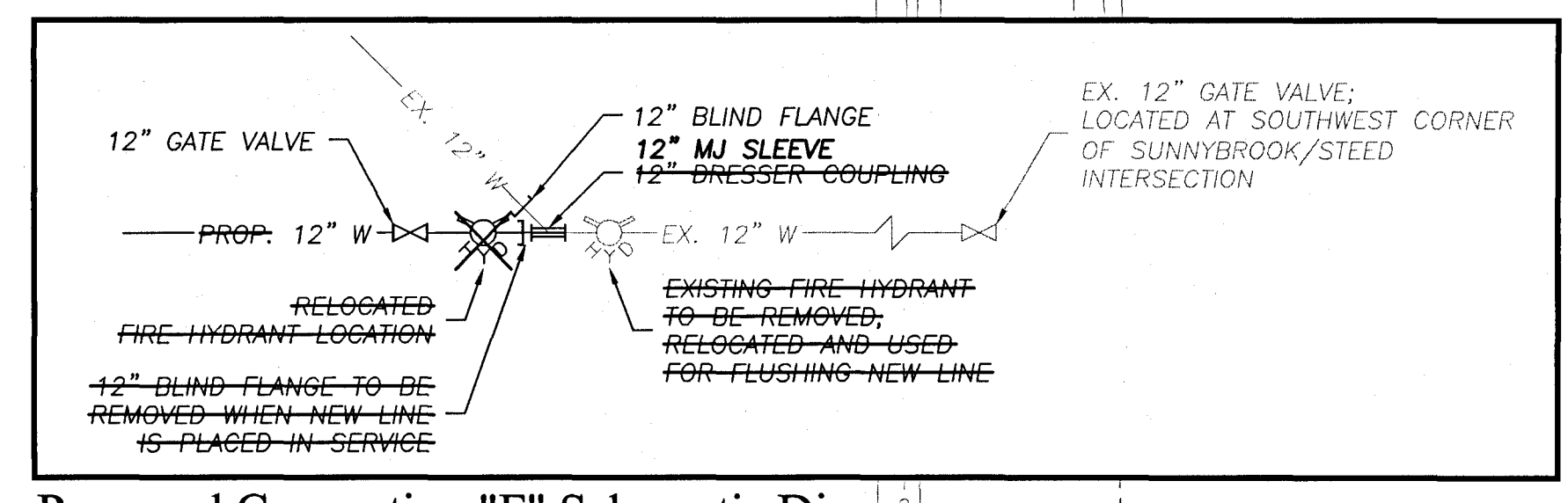
RECORD DRAWING - November 28, 2011
 THIS RECORD DRAWING HAS BEEN PREPARED BASED ON INFORMATION FURNISHED BY OTHERS. WHILE THIS INFORMATION FURNISHED IS ASSUMED TO BE RELIABLE, THE DESIGN CONSULTANT CANNOT ASSURE ITS ACCURACY. THE DESIGN CONSULTANT WILL NOT BE RESPONSIBLE FOR ANY ERRORS OR OMISSIONS WHICH MAY HAVE BEEN INCORPORATED INTO THIS RECORD DRAWING AS A RESULT. THOSE RELYING ON THIS RECORD DRAWING MUST OBTAIN INDEPENDENT VERIFICATION OF ITS ACCURACY BEFORE APPLYING IT FOR ANY PURPOSE.



Proposed Connection "E" Schematic Diagram
 N.T.S.



Paul Moak 8" Water Line Connection Schematic Diagram
 N.T.S.



Proposed Connection "F" Schematic Diagram
 N.T.S.

DRAWING REVISIONS		
NO.	REMARKS	DATE

DESIGNED BY: CMB
 CHECKED BY: BG
 DRAWING TITLE: Steel Road Utility Relocation
 SCALE: 1" = 30'
 DATE: December 2009
 PROJECT: W09022

P:\Ridgeland, City of W09022 - I-55 Frontage Utility Relocation\Record Drawings.dwg, 11/28/2011 10:51:12 AM, V:\unit-new\001 TD5600

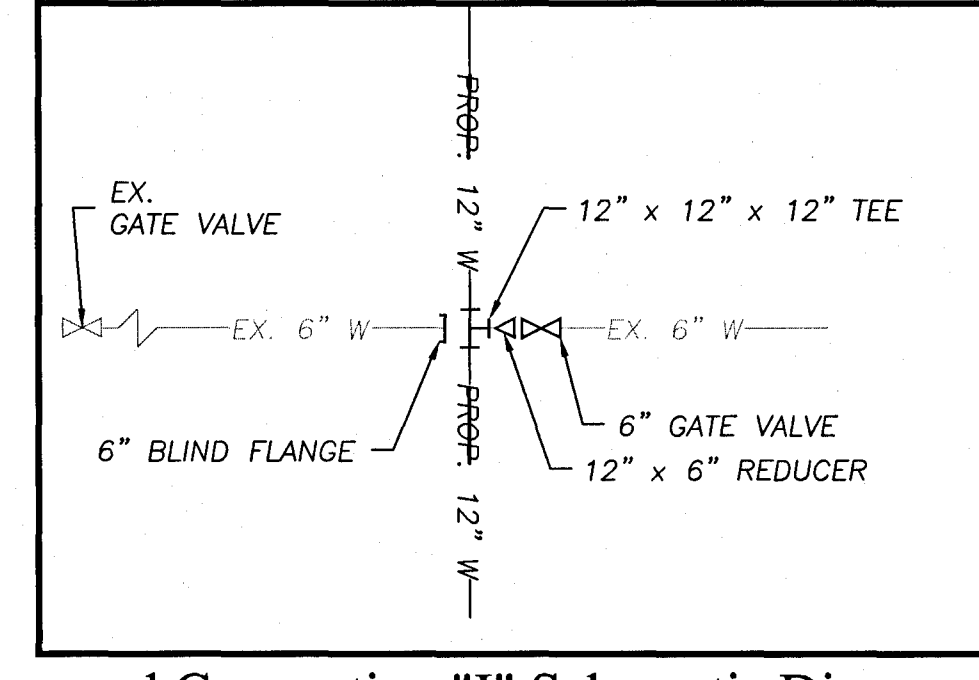
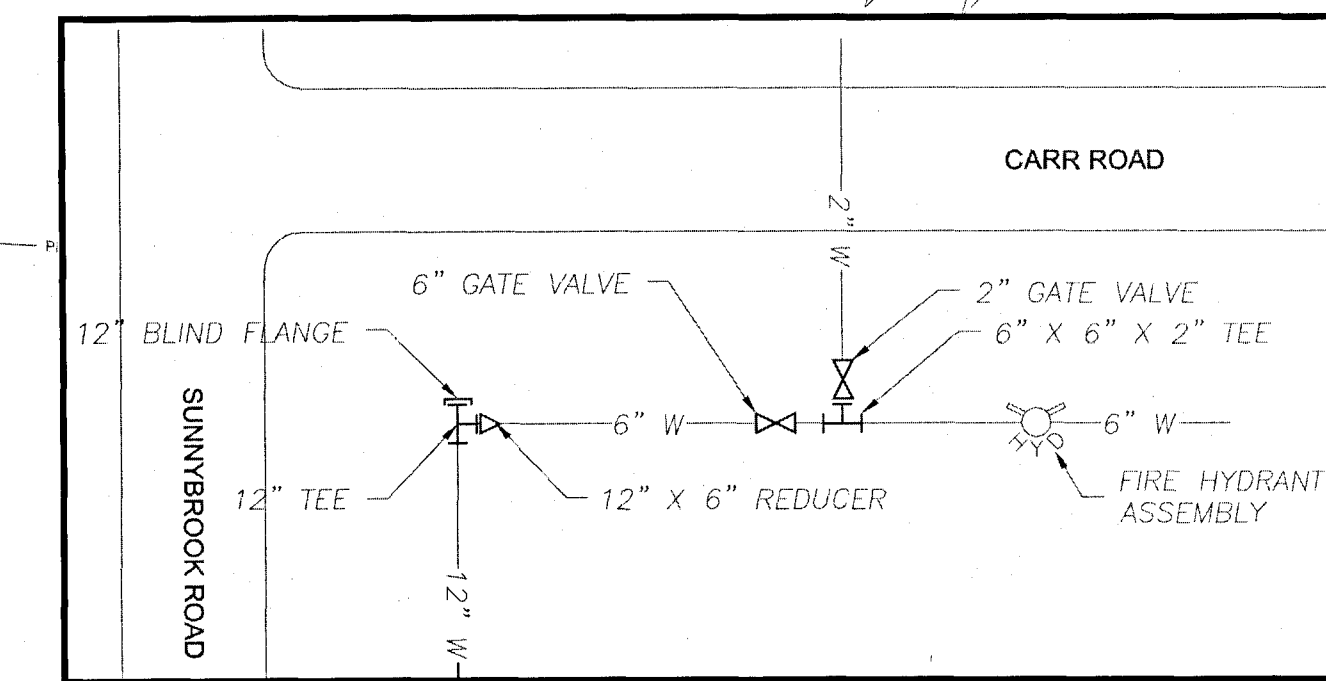
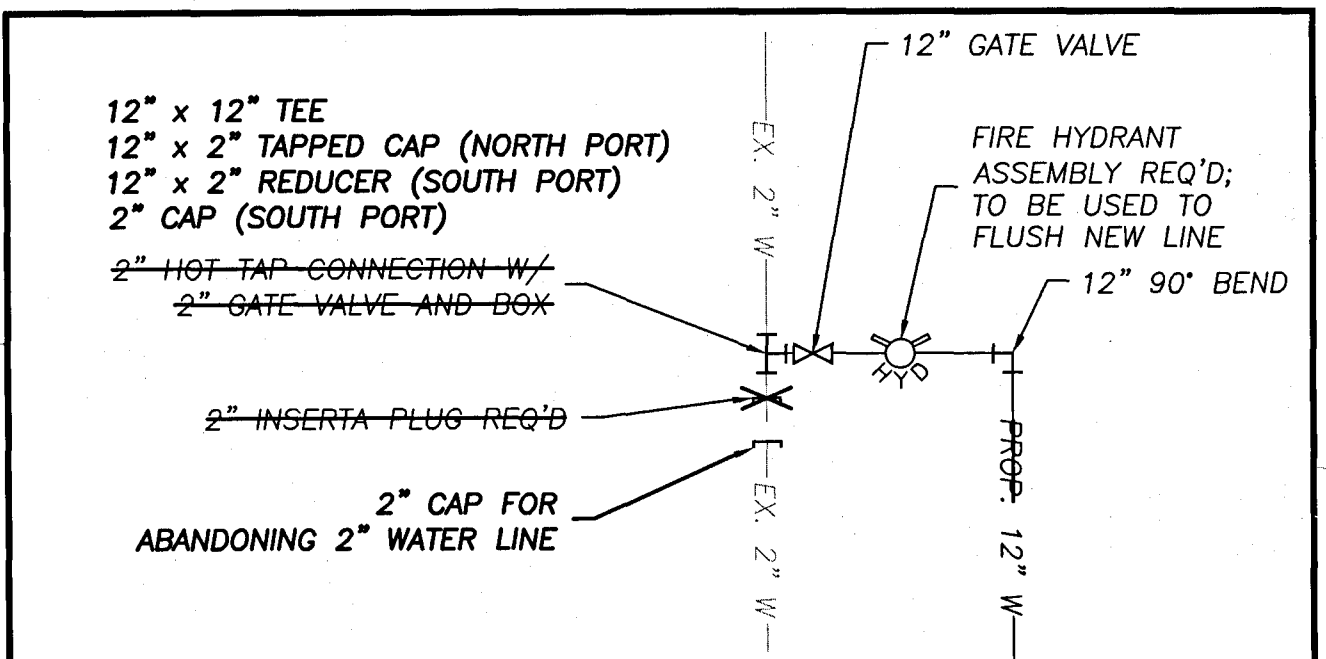
**INTERSTATE 55 FRONTAGE ROADS
 UTILITY RELOCATION
 FOR
 CITY OF RIDGELAND, MISSISSIPPI**

LEGEND

	WATER BACKFLOW PREVENTOR		EXISTING POWER POLE
	WATER METER		EXISTING LAMP POLE
	FIRE HYDRANT		EXISTING LIGHT POLE
	WATER VALVE		TRAFFIC SIGNAL POLE
	EXISTING WATER LINE		TRANSFORMER
	IRRIGATION VALVE		EXISTING UNDERGROUND POWER LINE
	EXISTING IRRIGATION LINE		TELEPHONE PEDESTAL
	PROPOSED WATER LINE		MANHOLE (UNKNOWN TYPE)
	EXISTING SEWER MANHOLE		EXISTING SHRUB / TREE
	PROPOSED SEWER LINE		EXISTING TREE LINE
	EXISTING CURB INLET		EXISTING STREAM / DITCH
	PROPOSED CURB / SURFACE INLET		

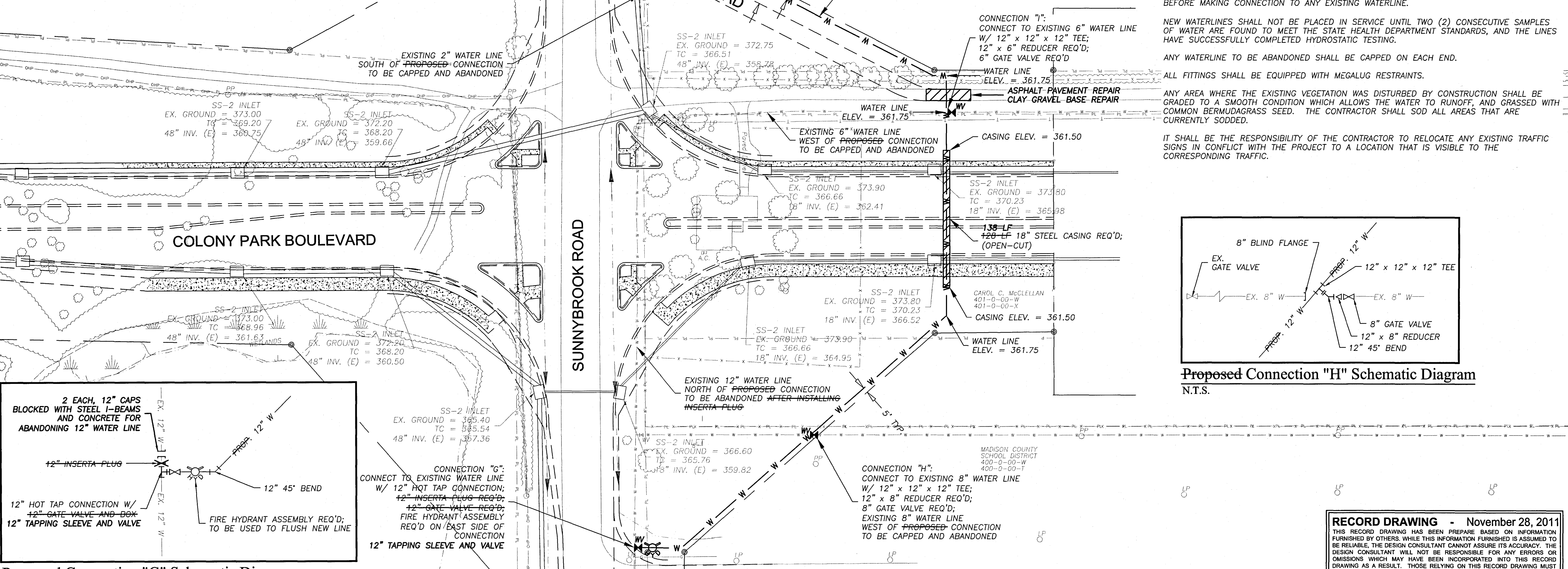
NOTES:

- CONTRACTOR TO VERIFY WATERLINE LOCATIONS IN FIELD WITH ENGINEER BEFORE INSTALLING.
- THE CITY OF RIDGELAND'S EXISTING WATER AND SEWER LINES ARE DEPICTED AS THEY WERE LOCATED BY THE CITY'S PUBLIC WORKS DEPARTMENT.
- BASE MAP INFORMATION FOR THE PROJECT DRAWINGS WAS PROVIDED BY THE MISSISSIPPI DEPARTMENT OF TRANSPORTATION, WAGGONER ENGINEERING, INC. MAKES NO GUARANTEE AS TO THE ACCURACY OF THIS INFORMATION.
- THE APPROXIMATE LOCATION OF KNOWN UNDERGROUND UTILITIES ARE SHOWN ON THE PLANS. IN ADDITION TO THE UTILITIES SHOWN, THERE MAY ALSO BE ADDITIONAL UNDERGROUND UTILITIES WHICH HAVE NOT BEEN DETECTED. IT SHALL BE THE RESPONSIBILITY OF THE CONTRACTOR TO CONTACT ALL UTILITY COMPANIES (CALL MISSISSIPPI ONE-CALL) AND THE CITY OF RIDGELAND PUBLIC WORKS DEPARTMENT TO GIVE NOTIFICATION OF INTENT TO EXCAVATE IN THE AREA OF THE PROJECT. FAILURE BY THE CONTRACTOR TO NOTIFY SAID COMPANIES SHALL MAKE THE CONTRACTOR LIABLE UNDER STATE LAW FOR ANY DAMAGES INCURRED TO UNDERGROUND UTILITIES.
- ALL WATERLINES TO BE INSTALLED AT A MINIMUM OF 36" BELOW GROUND UNLESS OTHERWISE NOTED.
- THE CONTRACTOR SHALL MAINTAIN A 10 FOOT HORIZONTAL SEPARATION AND AN 18" VERTICAL SEPARATION BETWEEN THE TOP OF ANY SANITARY SEWER LINE AND THE BOTTOM OF ANY WATER LINE.
- CONTRACTOR TO NOTIFY CITY OF RIDGELAND PUBLIC WORKS DEPARTMENT AT LEAST 48 HOURS BEFORE MAKING CONNECTION TO ANY EXISTING WATERLINE.
- NEW WATERLINES SHALL NOT BE PLACED IN SERVICE UNTIL TWO (2) CONSECUTIVE SAMPLES OF WATER ARE FOUND TO MEET THE STATE HEALTH DEPARTMENT STANDARDS, AND THE LINES HAVE SUCCESSFULLY COMPLETED HYDROSTATIC TESTING.
- ANY WATERLINE TO BE ABANDONED SHALL BE CAPPED ON EACH END.
- ALL FITTINGS SHALL BE EQUIPPED WITH MEGALUG RESTRAINTS.
- ANY AREA WHERE THE EXISTING VEGETATION WAS DISTURBED BY CONSTRUCTION SHALL BE GRADED TO A SMOOTH CONDITION WHICH ALLOWS THE WATER TO RUNOFF, AND GRASSED WITH COMMON BERMUDAGRASS SEED. THE CONTRACTOR SHALL SOD ALL AREAS THAT ARE CURRENTLY SODDED.
- IT SHALL BE THE RESPONSIBILITY OF THE CONTRACTOR TO RELOCATE ANY EXISTING TRAFFIC SIGNS IN CONFLICT WITH THE PROJECT TO A LOCATION THAT IS VISIBLE TO THE CORRESPONDING TRAFFIC.



Existing Piping Schematic Near Sunnybrook / Carr Intersection
 N.T.S.

Proposed Connection "I" Schematic Diagram
 N.T.S.



Proposed Connection "G" Schematic Diagram
 N.T.S.

Proposed Connection "H" Schematic Diagram
 N.T.S.

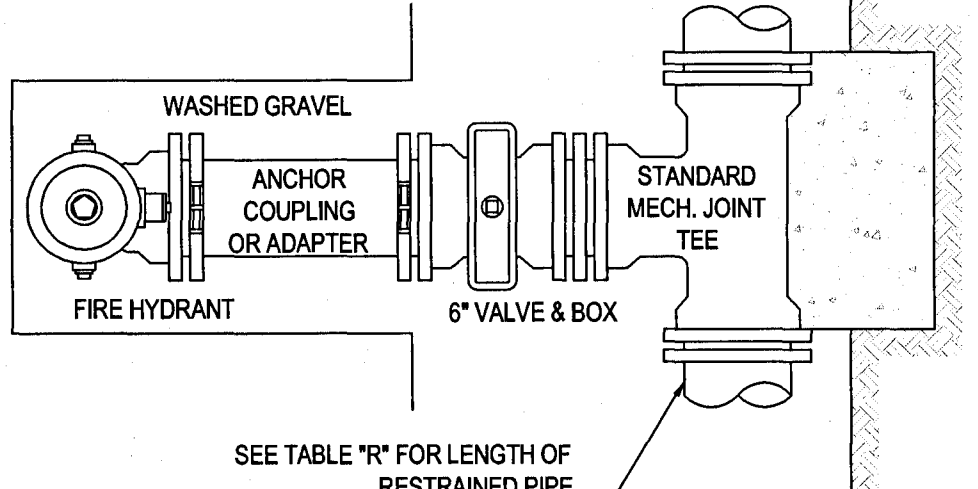
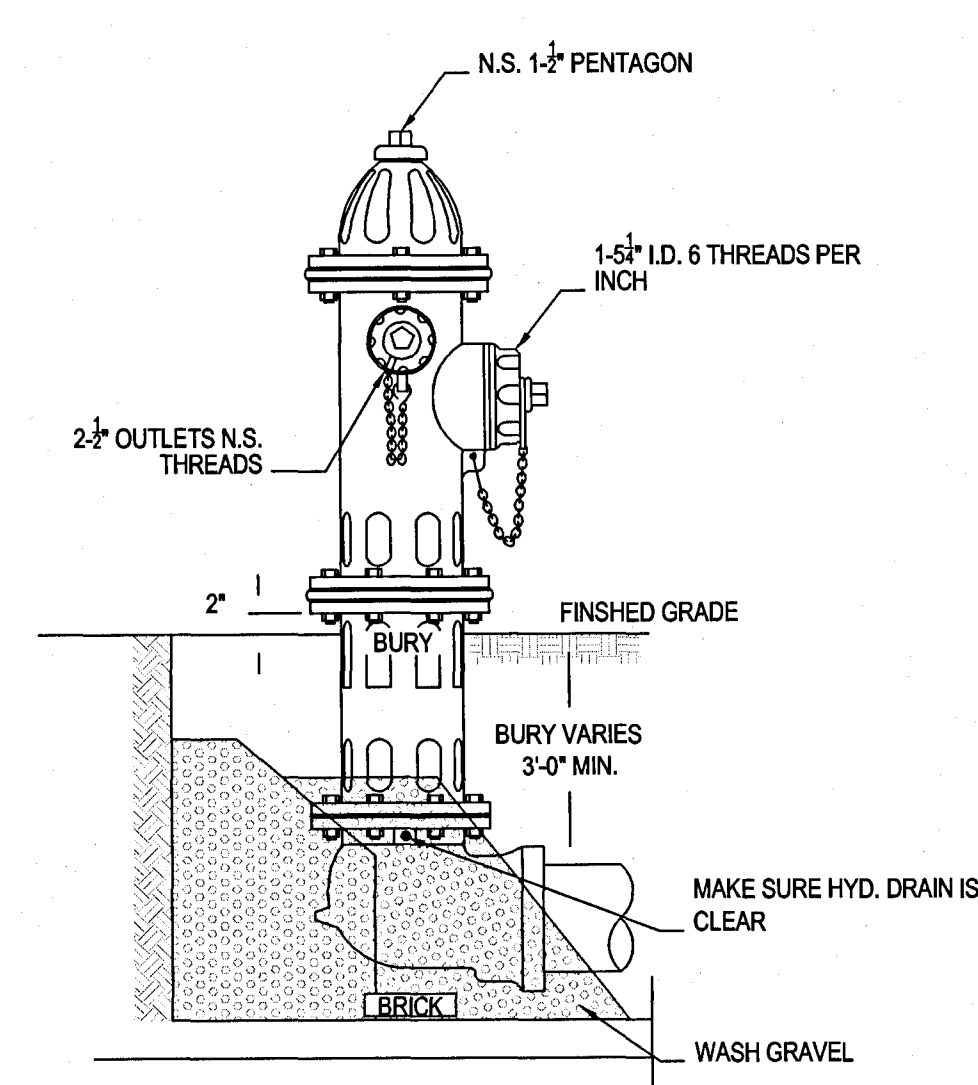
RECORD DRAWING - November 28, 2011
 THIS RECORD DRAWING HAS BEEN PREPARED BASED ON INFORMATION FURNISHED BY OTHERS. WHILE THIS INFORMATION FURNISHED IS ASSUMED TO BE RELIABLE, THE DESIGN CONSULTANT CANNOT ASSURE ITS ACCURACY. THE DESIGN CONSULTANT WILL NOT BE RESPONSIBLE FOR ANY ERRORS OR OMISSIONS WHICH MAY HAVE BEEN INCORPORATED INTO THIS RECORD DRAWING AS A RESULT. THOSE RELYING ON THIS RECORD DRAWING MUST OBTAIN INDEPENDENT VERIFICATION OF ITS ACCURACY BEFORE APPLYING IT FOR ANY PURPOSE.

DRAWING REVISIONS		
NO.	REMARKS	DATE

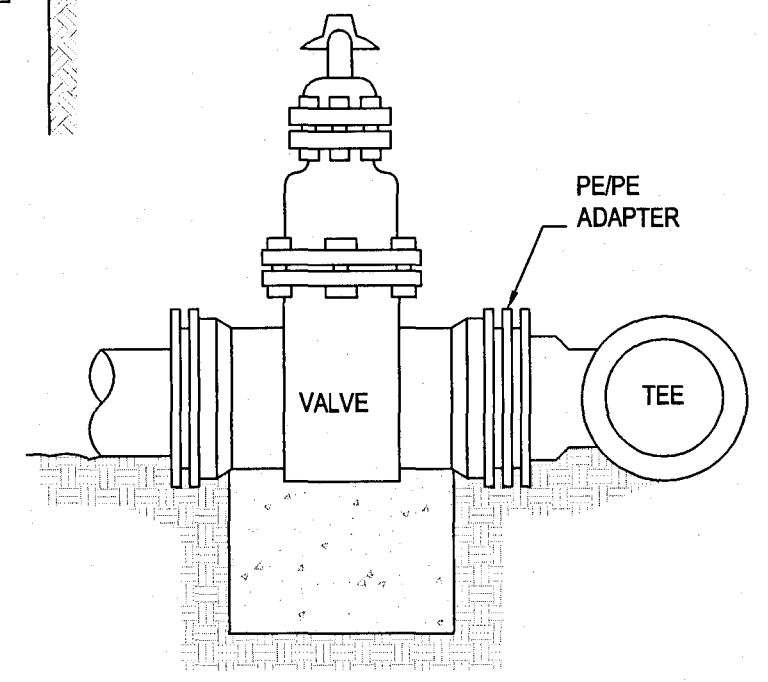
DRAWN BY: OMB SCALE: 1"=50'
 DESIGNED BY: BG DATE: June 2010
 CHECKED BY: BG PROJECT: W00022
 DRAWING TITLE:

**Carr Road
 Utility Relocation**
 SHEET NUMBER:
C3.0

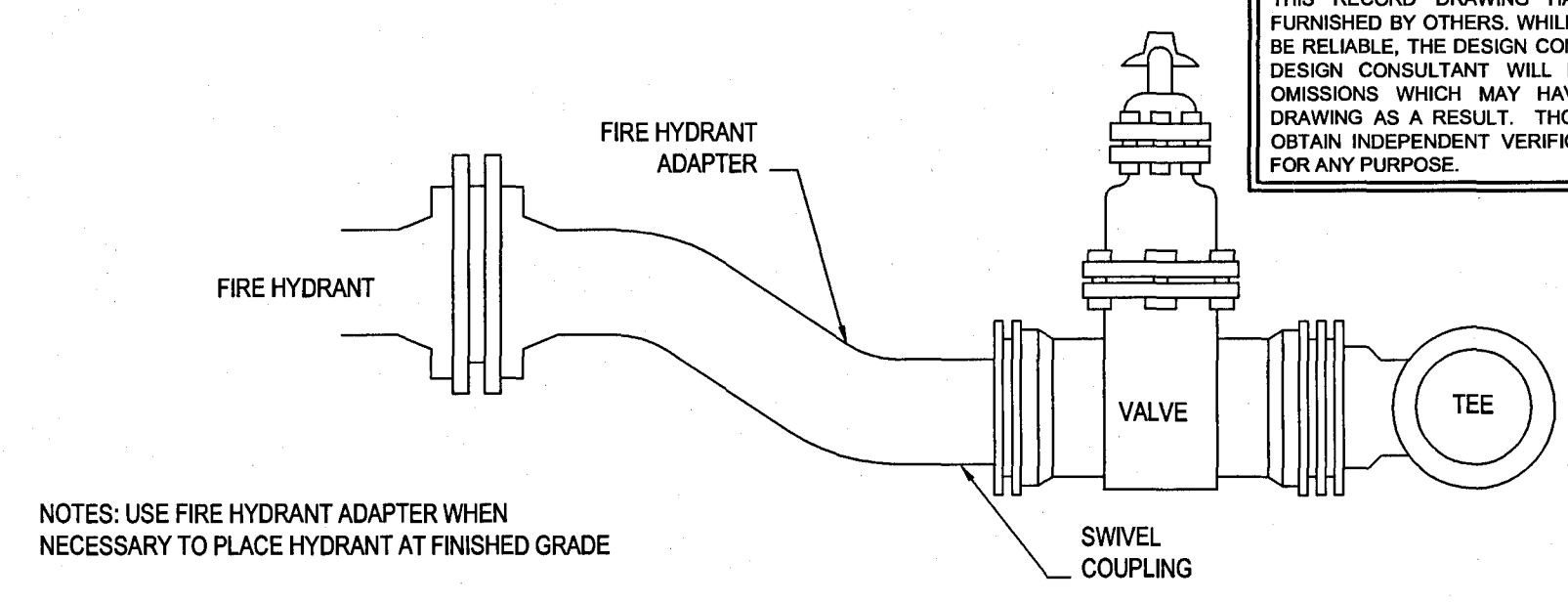
RECORD DRAWING - November 28, 2011
 THIS RECORD DRAWING HAS BEEN PREPARED BASED ON INFORMATION FURNISHED BY OTHERS. WHILE THIS INFORMATION FURNISHED IS ASSUMED TO BE RELIABLE, THE DESIGN CONSULTANT CANNOT ASSURE ITS ACCURACY. THE DESIGN CONSULTANT WILL NOT BE RESPONSIBLE FOR ANY ERRORS OR OMISSIONS WHICH MAY HAVE BEEN INCORPORATED INTO THIS RECORD DRAWING AS A RESULT. THOSE RELYING ON THIS RECORD DRAWING MUST OBTAIN INDEPENDENT VERIFICATION OF ITS ACCURACY BEFORE APPLYING IT FOR ANY PURPOSE.



NOTE: GATE VALVES WILL BE REQUIRED ON ALL FIRE HYDRANT LEGS

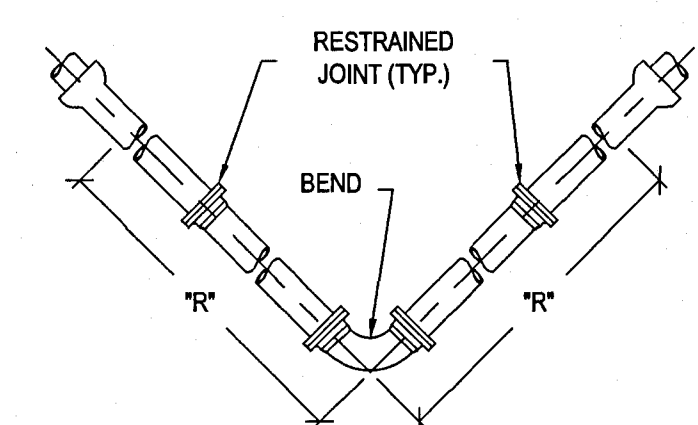


TYPICAL FIRE HYDRANT INSTALLATION
SCALE: N.T.S.



NOTES: USE FIRE HYDRANT ADAPTER WHEN NECESSARY TO PLACE HYDRANT AT FINISHED GRADE

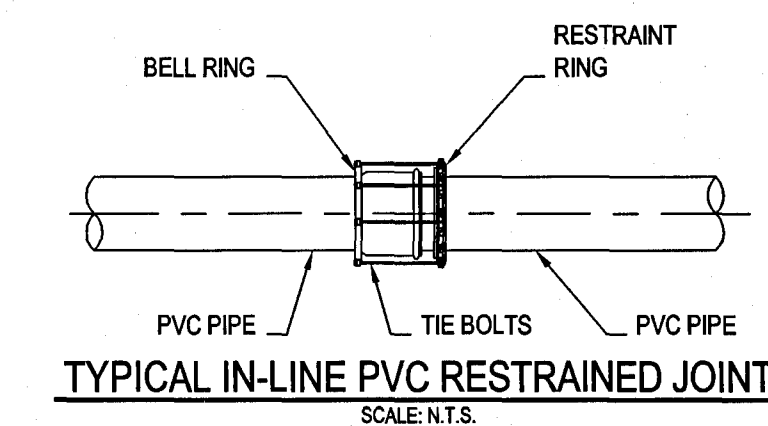
FIRE HYDRANT ADAPTER
SCALE: N.T.S.



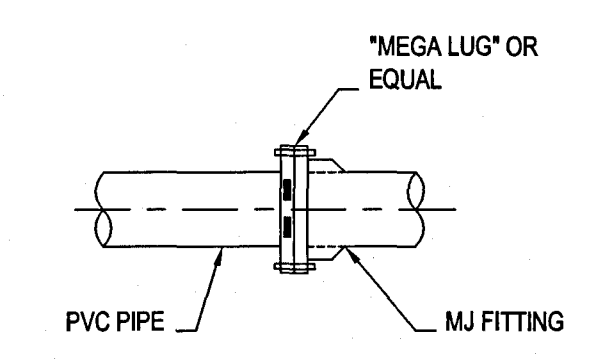
PIPE DIAMETER	"R" FOR 11° BEND	"R" FOR 22° BEND	"R" FOR 45° BEND	"R" FOR 90° BEND	"R" FOR DEAD END
8"	3'	6'	12'	29'	25'
12"	4'	8'	17'	42'	37'
16"	5'	11'	23'	55'	49'
18"	6'	12'	25'	61'	55'
24"	8'	16'	33'	80'	73'
30"	10'	20'	41'	99'	90'

- NOTES:**
- RESTRAINED JOINT PIPE SHALL BE USED AT ALL BENDS.
 - THE LENGTH OF RESTRAINED PIPE ON EACH SIDE OF THE BEND SHALL BE NOT LESS THAN THE "R" DISTANCES.
 - ALL JOINTS WITHIN THE DISTANCE "R" ESTABLISHED ABOVE SHALL BE RESTRAINED.
 - ALL PIPE IN CASINGS SHALL BE RESTRAINED, BUT PIPE LENGTHS IN CASING SHALL NOT APPLY TOWARD REQUIRED RESTRAINED LENGTHS FOR ADJACENT BENDS.
 - RESTRAINED JOINT LENGTHS WERE CALCULATED BASED ON DIPRA THRUST RESTRAINT GUIDELINES UNDER THE FOLLOWING CONDITIONS:
 LAYING CONDITION - TYPE 3
 SOIL DESIGNATION - CLAY 2
 DEPTH OF COVER - 3.5'
 DESIGN PRESSURE - 150 PSI
 SAFETY FACTOR - 1.5
 IF ANY OF THESE ASSUMPTIONS SIGNIFICANTLY DIFFER FROM THE LAYING CONDITIONS, NEW THRUST RESTRAINT CALCULATIONS SHOULD BE PERFORMED.
 - FOR BENDS IN THE VERTICAL PLANE INCREASE THE "R" DISTANCE BY A FACTOR OF 1.75.

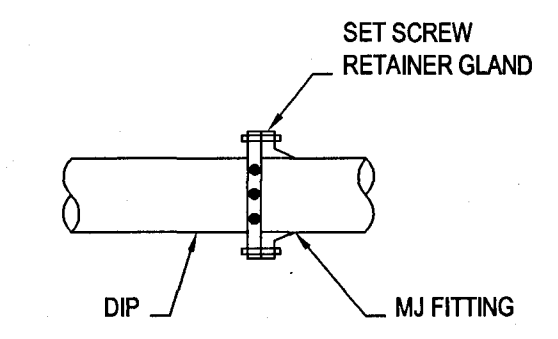
RESTRAINED JOINT DETAIL
SCALE: N.T.S.



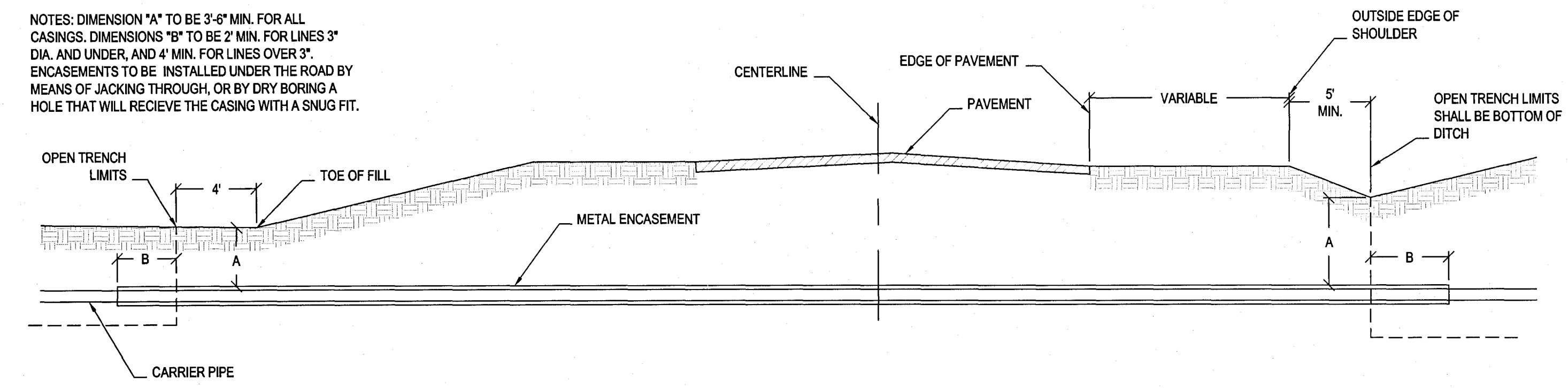
TYPICAL IN-LINE PVC RESTRAINED JOINT
SCALE: N.T.S.



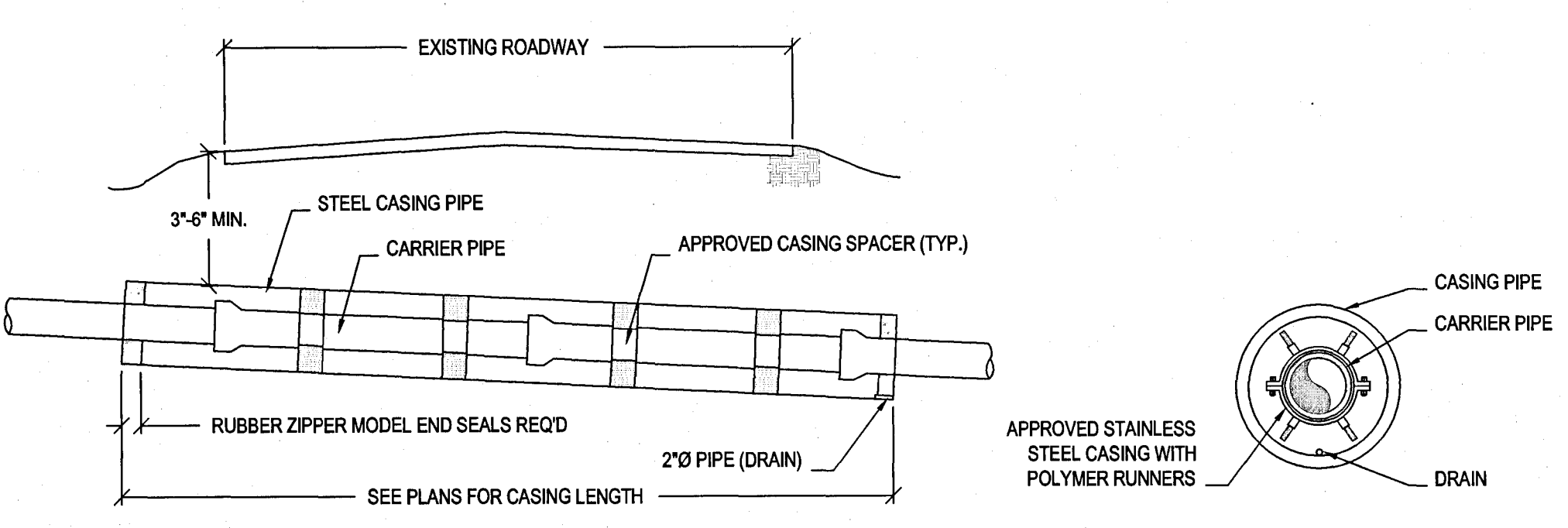
TYPICAL PVC RESTRAINED JOINT AT MJ FITTING
SCALE: N.T.S.



TYPICAL DI RESTRAINED JOINT AT MJ FITTING
SCALE: N.T.S.

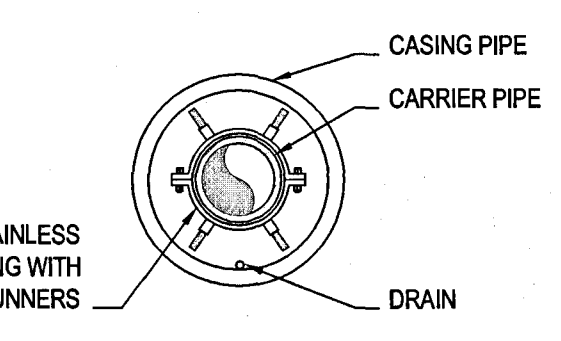


CROSS SECTION OF CONDUIT CROSSING
SCALE: N.T.S.

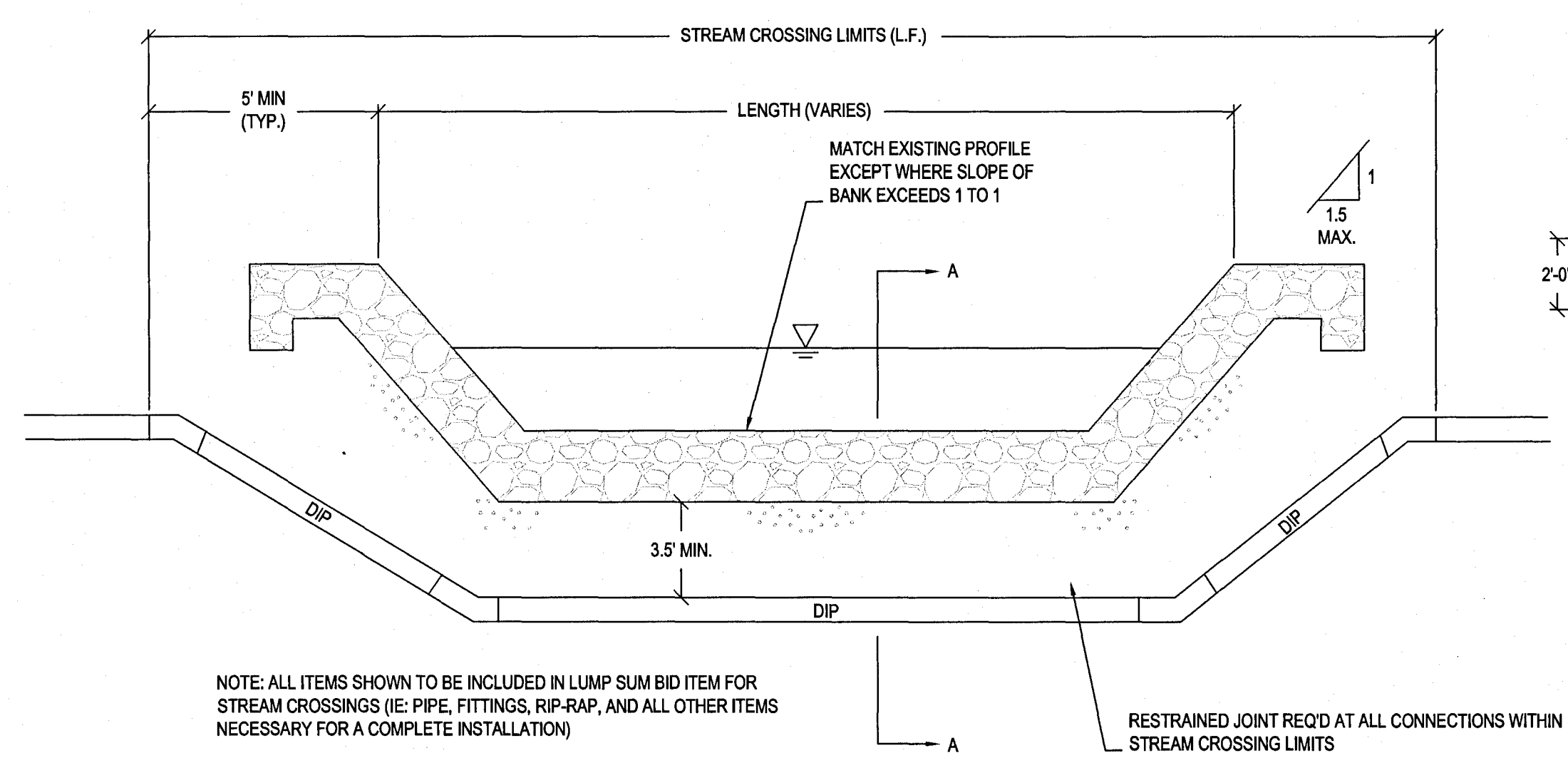


- NOTES:**
- SPACE CASING SPACERS ACCORDING TO PIPE OR SPACER MANUFACTURER'S RECOMMENDATIONS OR 2 PER SECTION OF PIPE, WHICHEVER IS GREATEST, PLUS 1 WITHIN 2 FEET OF EACH END OF CROSSING.
 - PUSH OR PULL THE CARRIER PIPE THROUGH THE CASING SO THAT THE CARRIER JOINTS ARE ALWAYS COMPRESSED.

CASING SPACER DETAIL
SCALE: N.T.S.

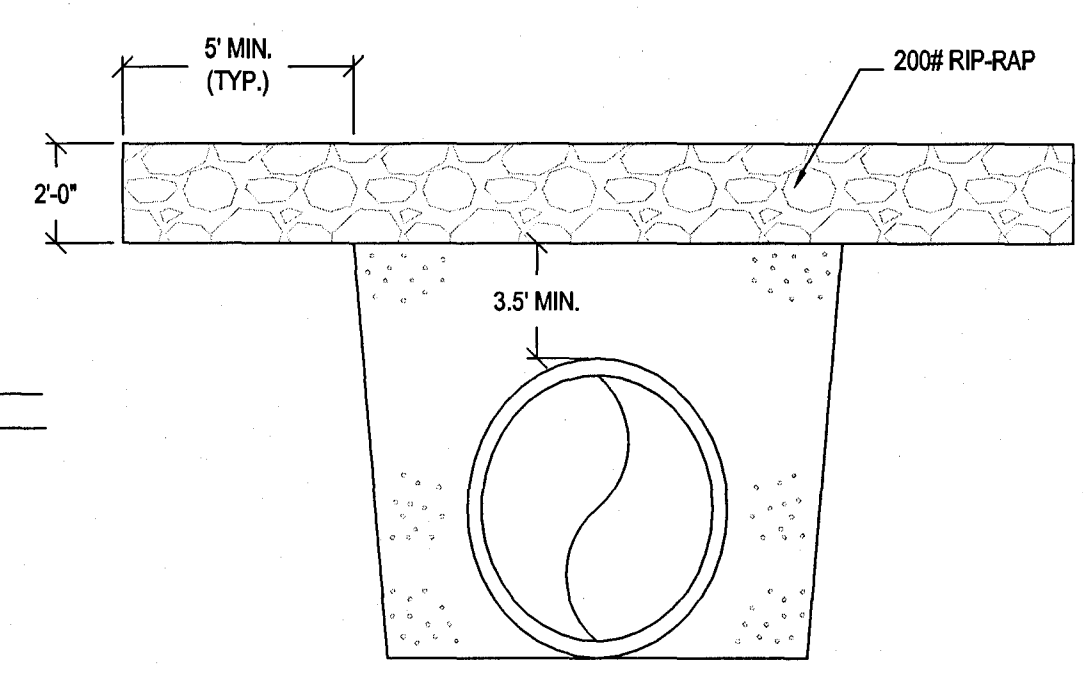


PIPE IN CASING END VIEW



NOTE: ALL ITEMS SHOWN TO BE INCLUDED IN LUMP SUM BID ITEM FOR STREAM CROSSINGS (I.E. PIPE, FITTINGS, RIP-RAP, AND ALL OTHER ITEMS NECESSARY FOR A COMPLETE INSTALLATION)

ELEVATION



SECTION A-A

STREAM CROSSING
SCALE: N.T.S.

**INTERSTATE 55 FRONTAGE ROADS
 UTILITY RELOCATION
 FOR
 CITY OF RIDGELAND, MISSISSIPPI**

DRAWING REVISIONS		
NO.	REMARKS	DATE

DRAWN BY: CWB
 DESIGNED BY: BG
 CHECKED BY: BG
 DRAWING TITLE: Construction Details

SCALE: As Shown
 DATE: July 2008
 PROJECT: W08022
 SHEET NUMBER: CD.2

P:\Ridgeland_City ofRidgeland\Utility Relocation\Record Drawings.dwg 11/28/2011 10:51:23 AM \iprint-new\Doc T05600