

CONTRACT DRAWINGS FOR

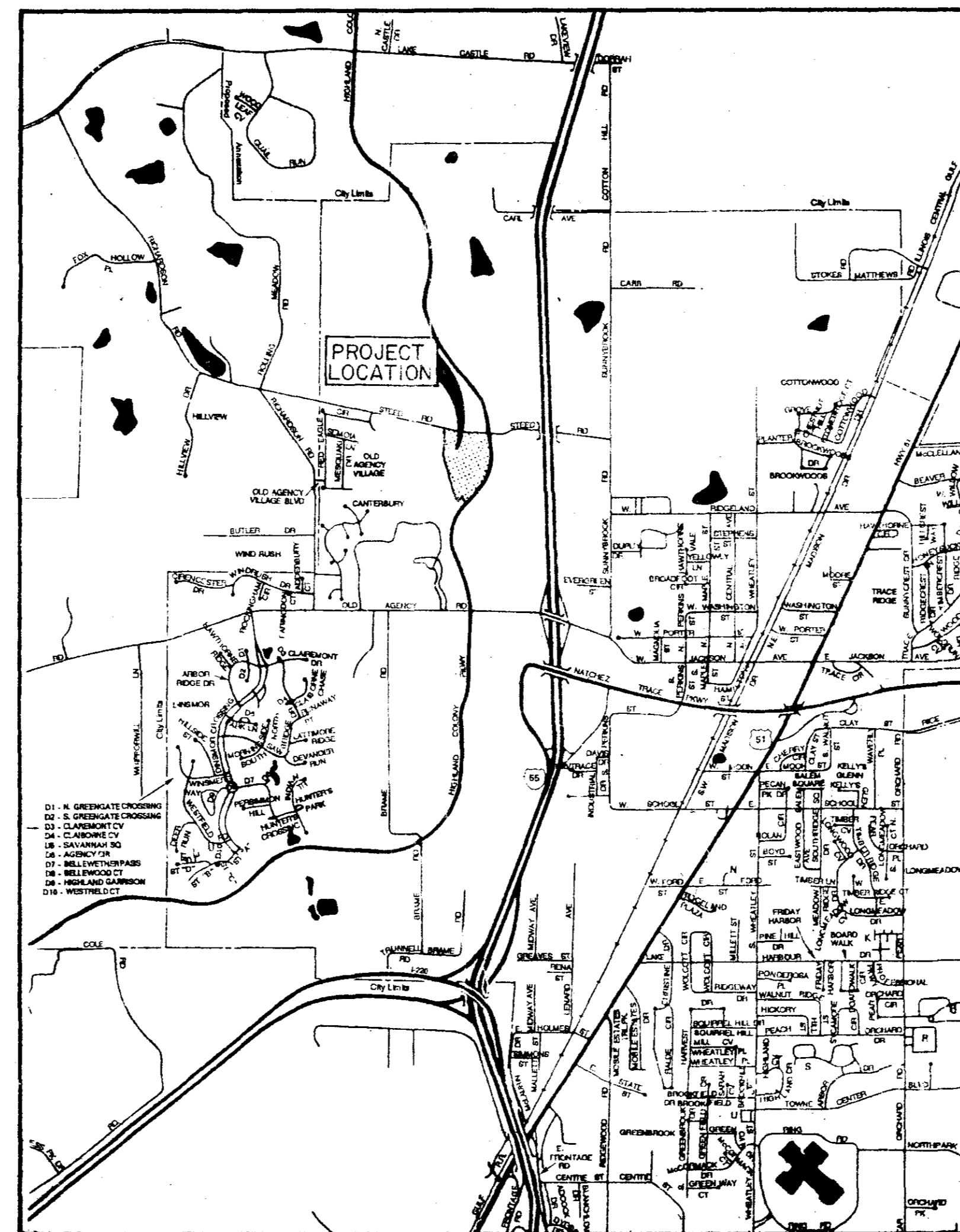
WEST PARKWAY PLACE

STREETS, DRAINAGE, SANITARY SEWER & WATER SYSTEM

INDEX TO DRAWINGS

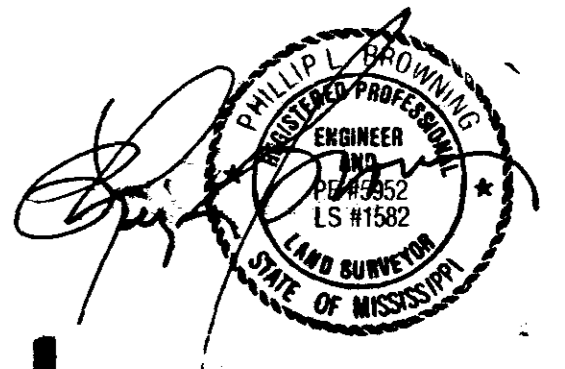
Cover Sheet	1
General Layout	2
Drainage Layout	3
Stormwater Pollution Prevention	4
Profile Sheets	5 - 8
Drainage Details	9
Water Details	10
Sewer Details	11

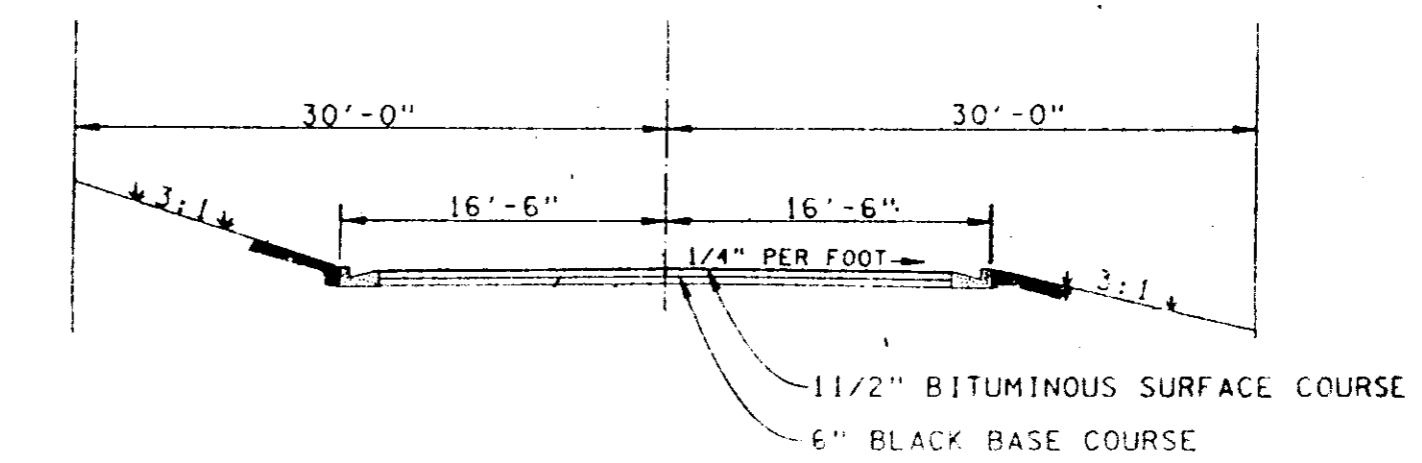
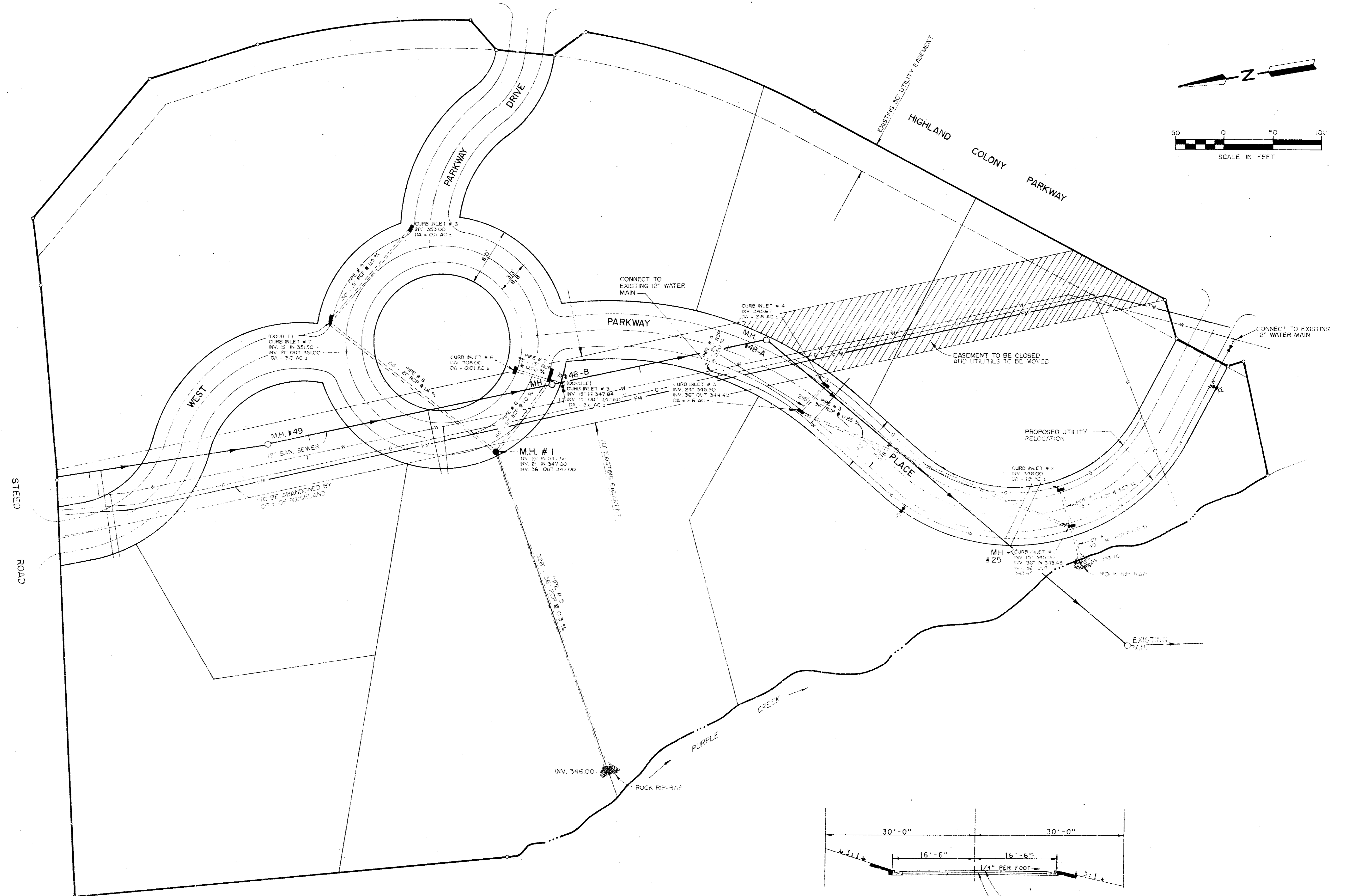
<u>ITEM</u>	<u>ESTIMATED QUANTITY</u>	<u>UNIT</u>
<u>WATER DISTRIBUTION SYSTEM</u>		
Connection to Existing Main	2	EA
6" PVC Main, C-900, Class 150	45	LF
8" PVC Main, C-900, Class 150	625	LF
12" PVC Main, C-900, Class 150	700	LF
8" Gate Valve w/Box	2	EA
12" Gate Valve w/Box	2	EA
8"x8"x6" Tee	2	EA
12"x12"x6" Tee	3	EA
6" Fire Hydrant w/Valve	5	EA
Service Assemblies	11	EA
1" Service Line	630	LF
Service Markers	11	EA
11" Steel Casing (Bore and Jack)	80	LF



VICINITY MAP

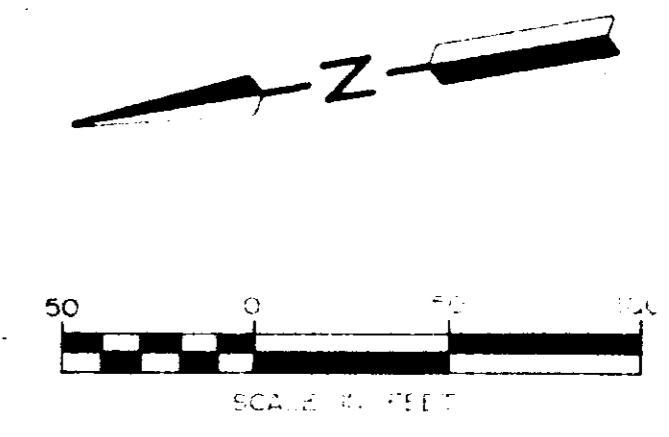
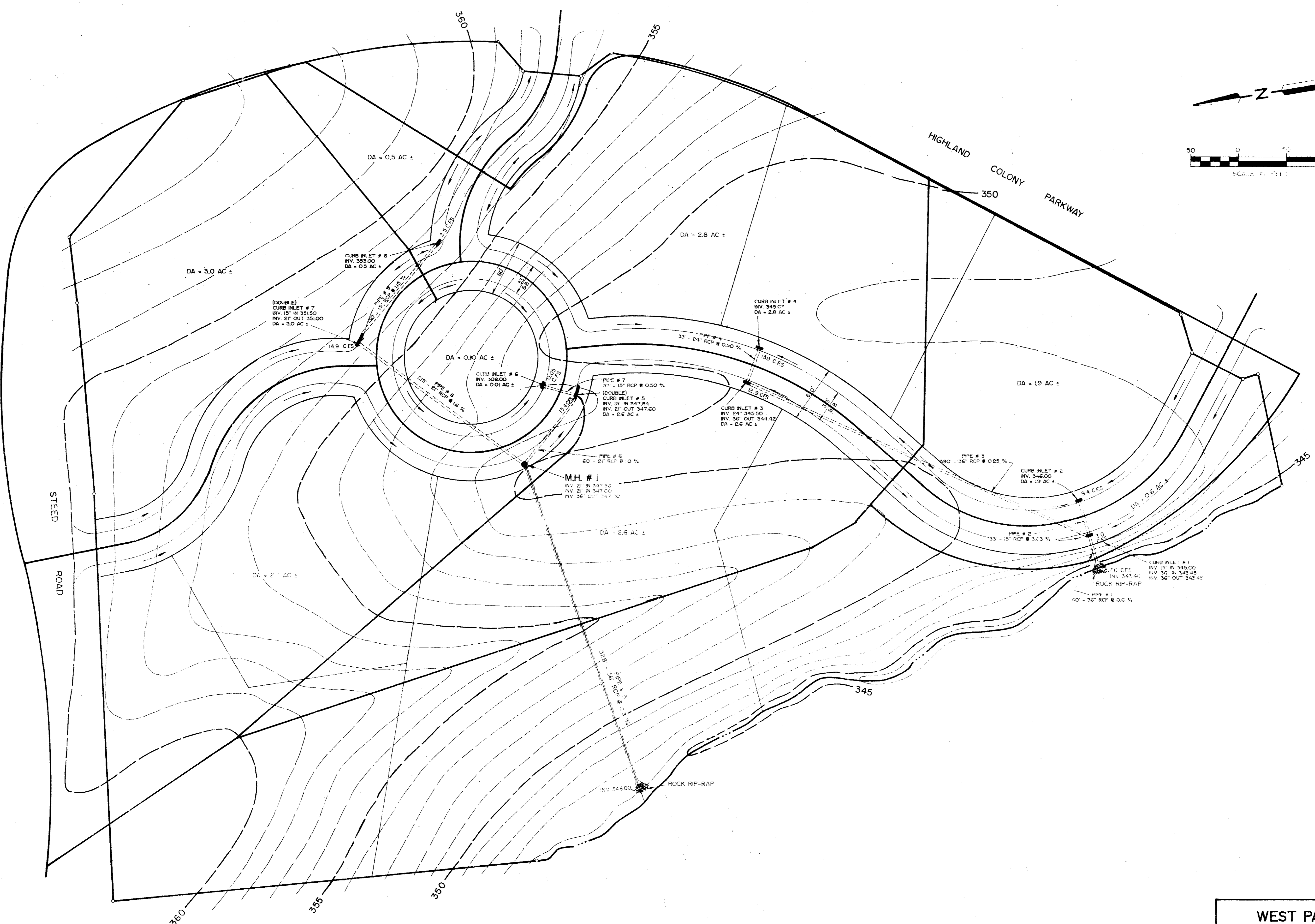
<u>STREETS AND DRAINAGE</u>		
Excavation - Common	4,620	CY
Street Undercut with On-site Backfill	3,000	CY
Embankment	600	CY
Sub-base Preparation	12,000	SY
4" Base Course	12,000	SY
11" Surface Course	12,000	SY
Concrete Curb and Gutter	5,620	LF
Remove Concrete Curb and Gutter	350	LF
Curb Inlets	12	EA
15" Reinforced Concrete Pipe	200	LF
21" Reinforced Concrete Pipe	275	LF
24" Reinforced Concrete Pipe	33	LF
36" Reinforced Concrete Pipe	758	LF
36" Flared End Section	2	EA
Rock Rip-Rap	12	TON
<u>SANITARY SEWER SYSTEM</u>		
Connection to Existing Main	1	EA
8" Gravity Sewer (8'-10')	120	LF
8" Gravity Sewer (10'-12')	77	LF
8" Gravity Sewer (12'-14')	99	LF
8" Gravity Sewer (14'-16')	148	LF
8" Gravity Sewer (16'-18')	131	LF
12" Gravity Sewer (6'-8')	589	LF
12" Gravity Sewer (8'-10')	162	LF
12" Gravity Sewer (12'-14')	337	LF
12" Ductile Iron Pipe (14'-16')	100	LF
16" Ductile Iron Pipe (14'-16')	146	LF
48" Standard Manhole (6'-8')	2	EA
48" Standard Manhole (8'-10')	1	EA
48" Standard Manhole (10'-12')	2	EA
48" Standard Manhole (14'-16')	2	EA
Undercut and Select Backfill	500	CY
Service Tees	7	EA
Service Line	350	LF
Service Markers	9	EA
Rock Rip-Rap	475	TON
20" Steel Casing (Bore and Jack)	80	LF
<u>GRASS PLANTING</u>		
Seeding	1.3	AC
<u>STORMWATER POLLUTION PREVENTION PLAN</u>		
Stormwater Pollution Prevention Plan	1	LS



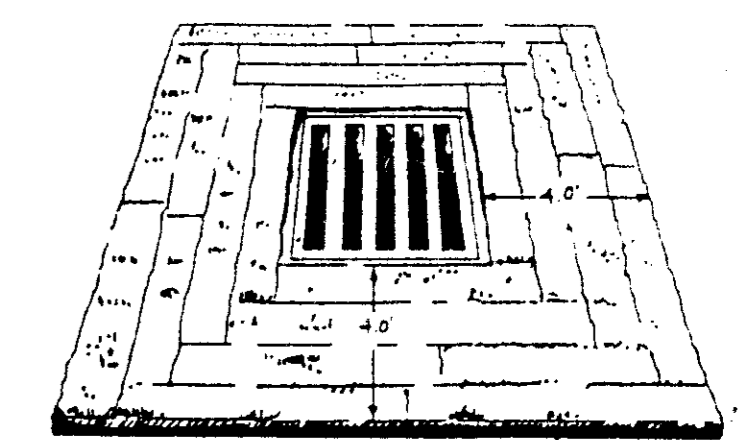
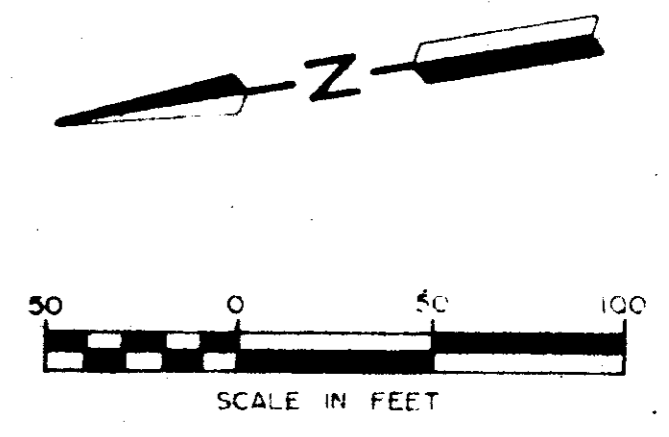
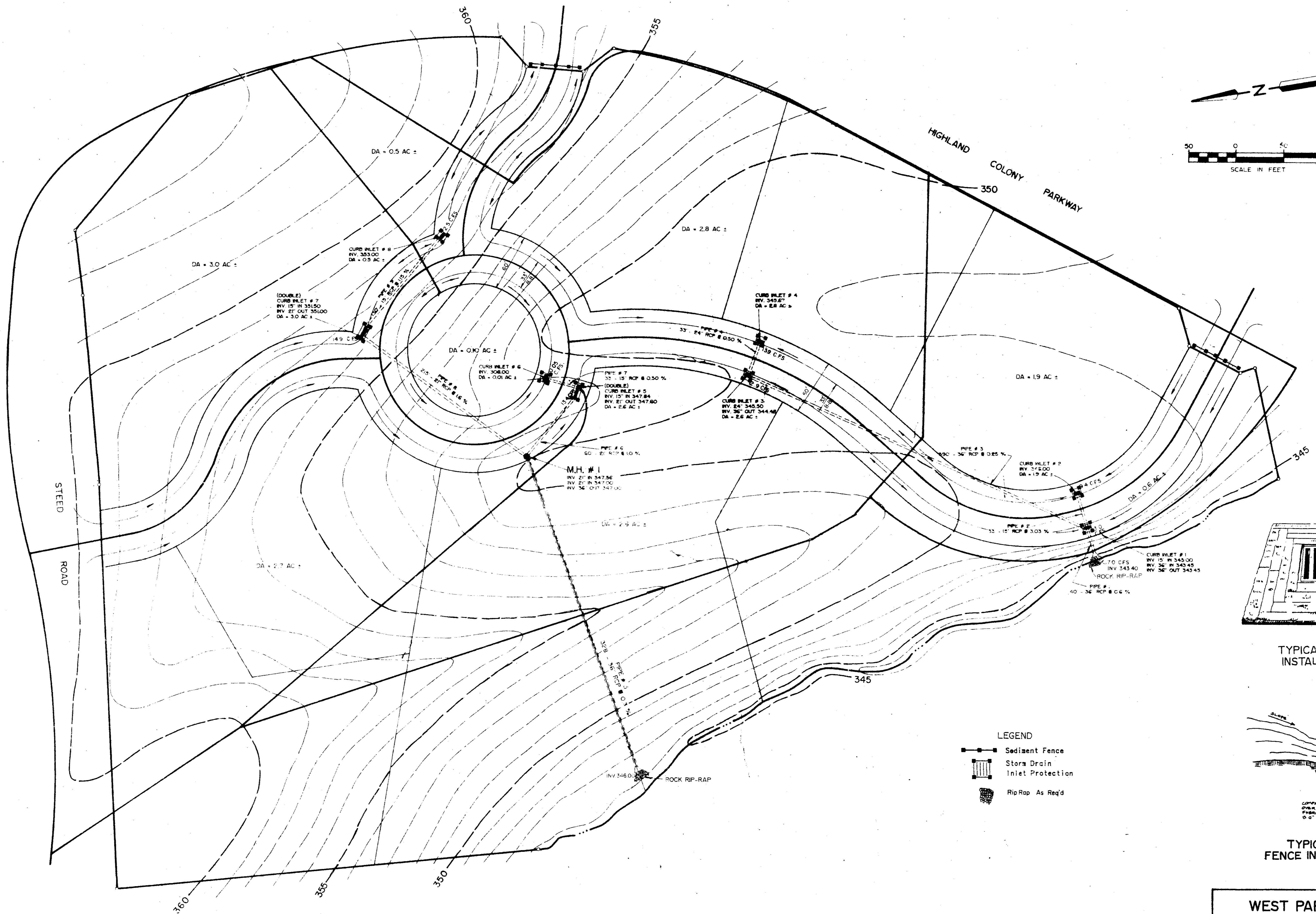


TYPICAL STREET SECTION

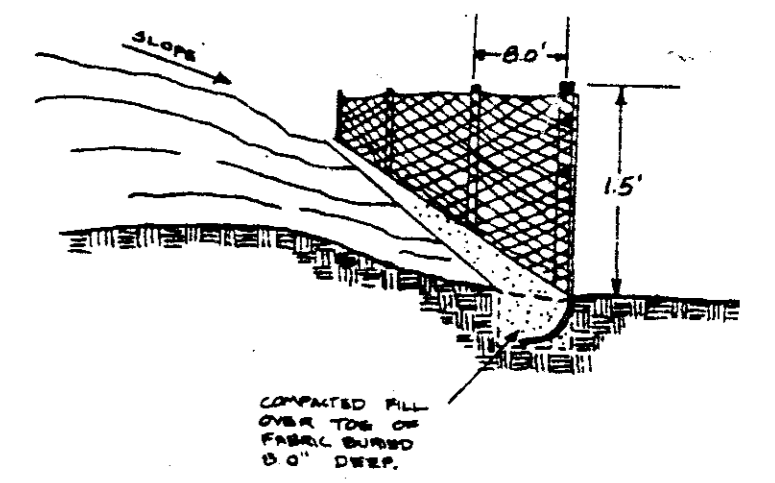
WEST PARKWAY PLACE		
GENERAL LAYOUT		
BROWNING INC. Consulting Engineers Jackson, Mississippi		
Designed By: P.L.B.	Scale: 1" = 50'	Sheet: 2 of 11
Drawn By: J.R.F.	Date: JAN, 1995	



WEST PARKWAY PLACE	
DRAINAGE LAYOUT	
BROWNING INC.	
Responsible Engineer	Date
Drawn By	Date
Sheet 3 of 11	



TYPICAL INLET INSTALLATION



TYPICAL SILT FENCE INSTALLATION

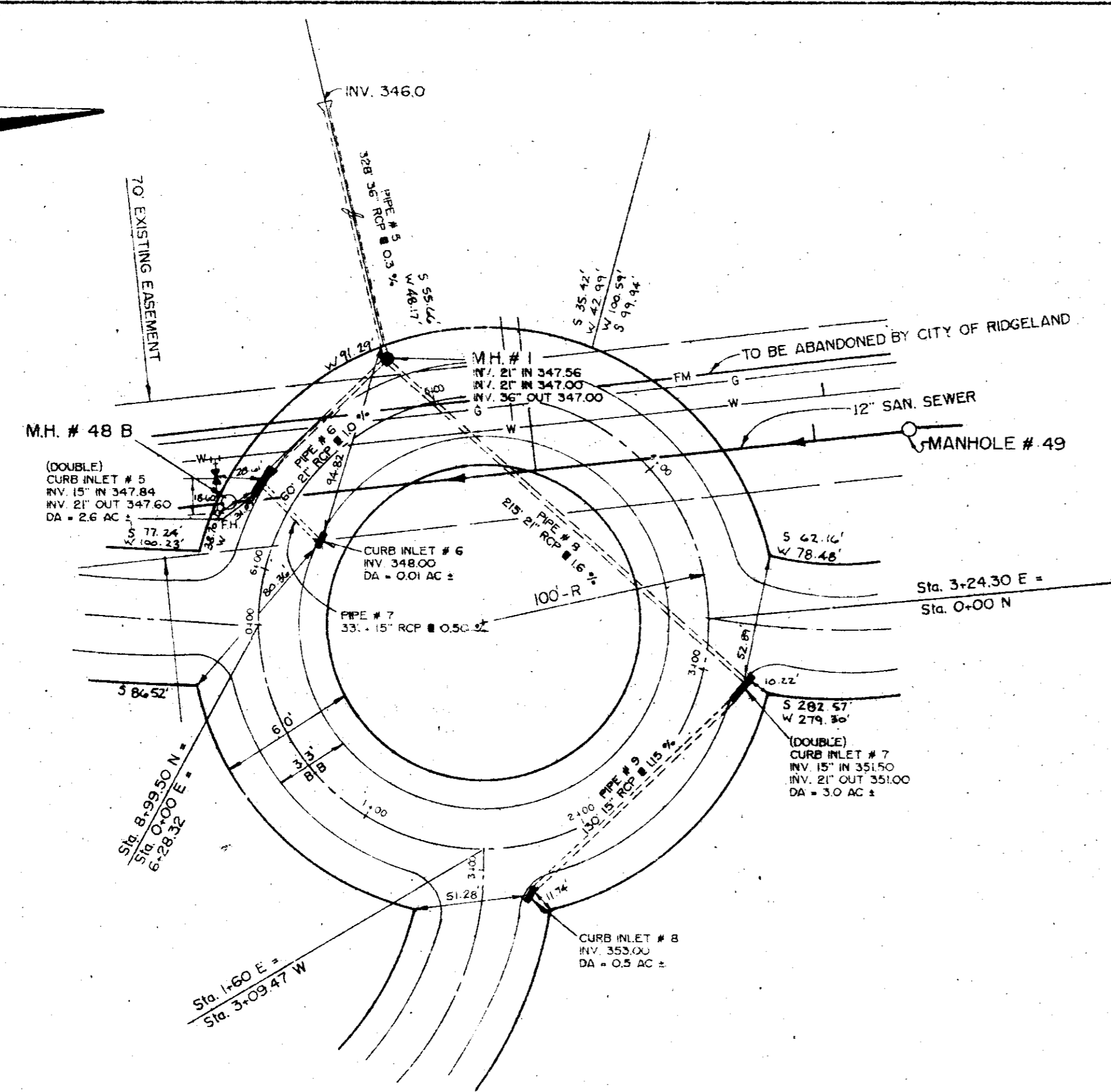
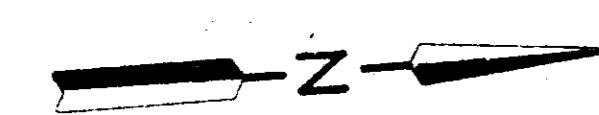
- LEGEND**
- Sediment Fence
 - Storm Drain Inlet Protection
 - RipRap As Req'd

WEST PARKWAY PLACE
DRAINAGE LAYOUT AND
STORMWATER POLLUTION
PREVENTION PLAN

BROWNING INC.
 Consulting Engineers Jackson, Mississippi

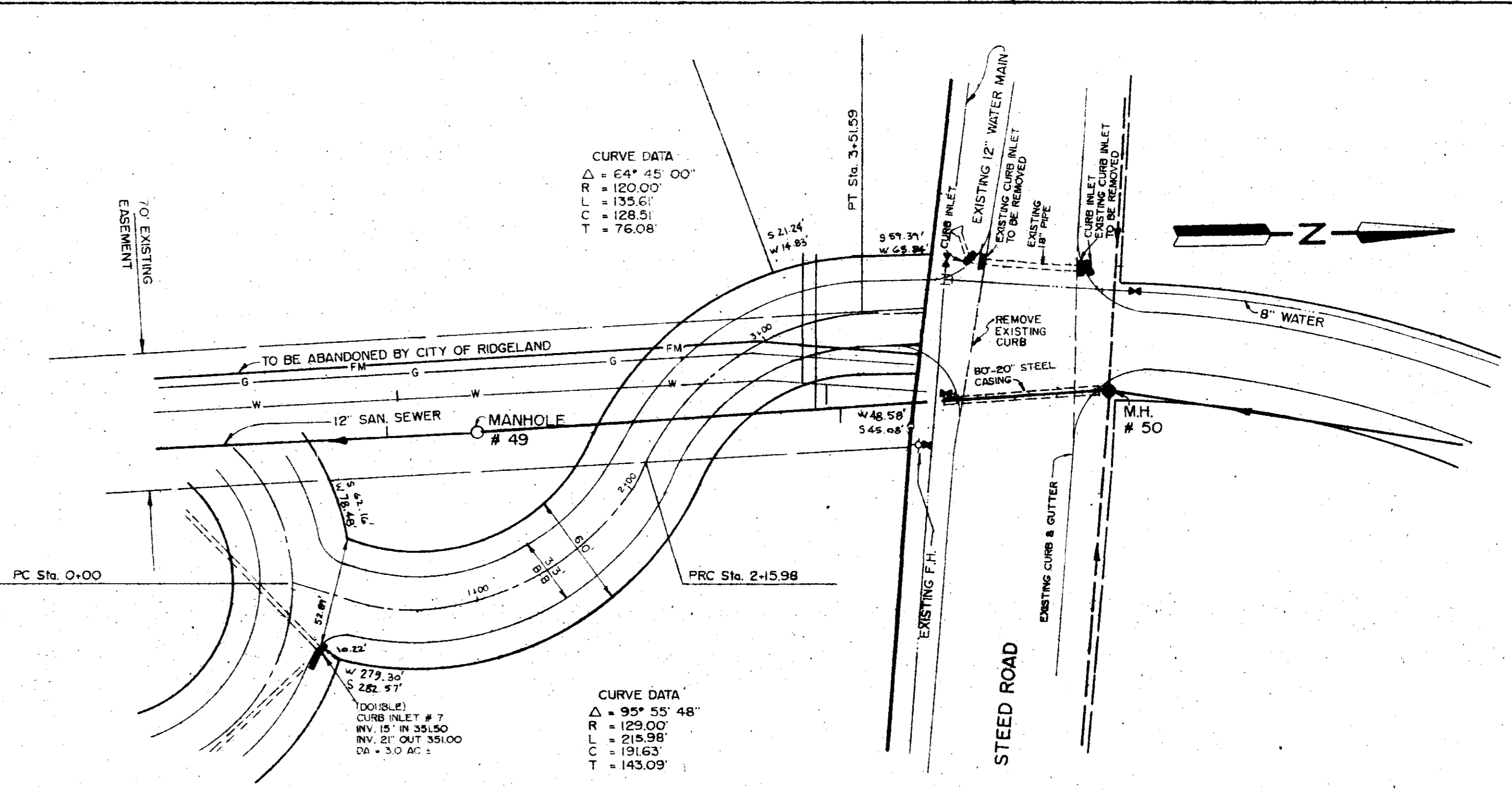
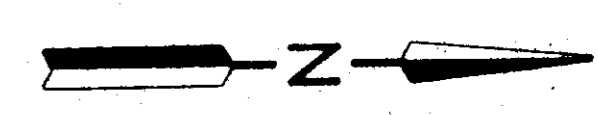
Designed By: P. B.	Scale: 1" = 50'	Sheet 4 of 11
Drawn By: JRF	Date: JAN, 1995	

PLAN	DATE
NO. 1	11/11/11
NO. 2	11/11/11
NO. 3	11/11/11
NO. 4	11/11/11
NO. 5	11/11/11
NO. 6	11/11/11
NO. 7	11/11/11
NO. 8	11/11/11
NO. 9	11/11/11
NO. 10	11/11/11



WEST PARKWAY PLACE

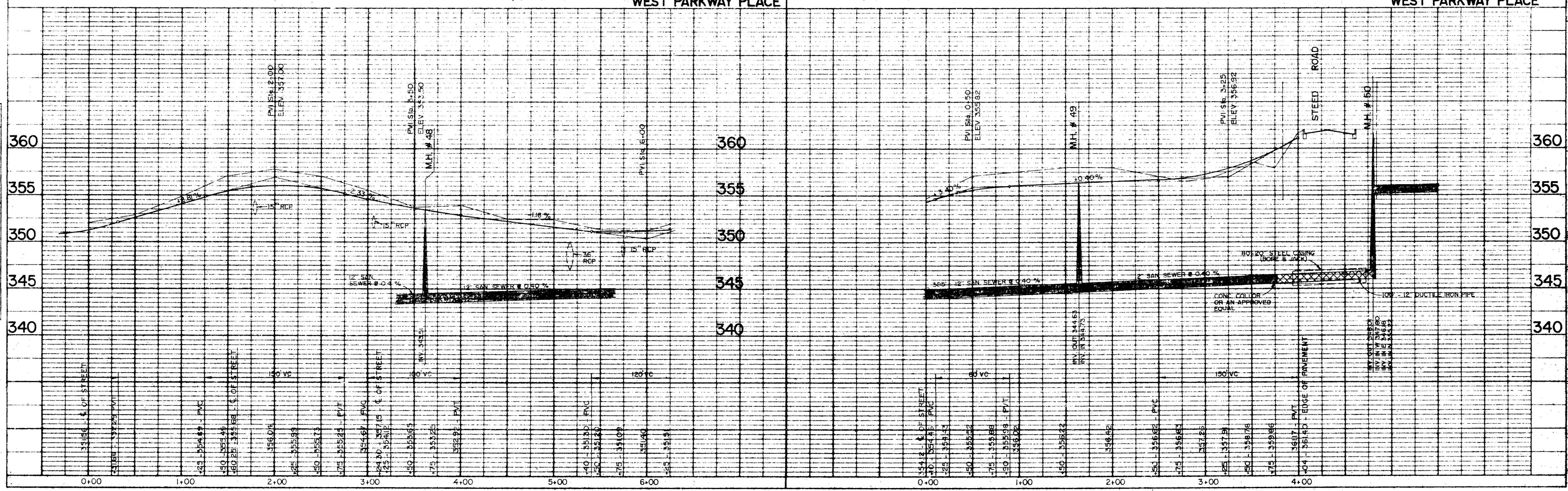
CURVE DATA
 $\Delta = 64^\circ 45' 00''$
 $R = 120.00'$
 $T = 135.61'$
 $LC = 28.51'$
 $E = 76.08'$



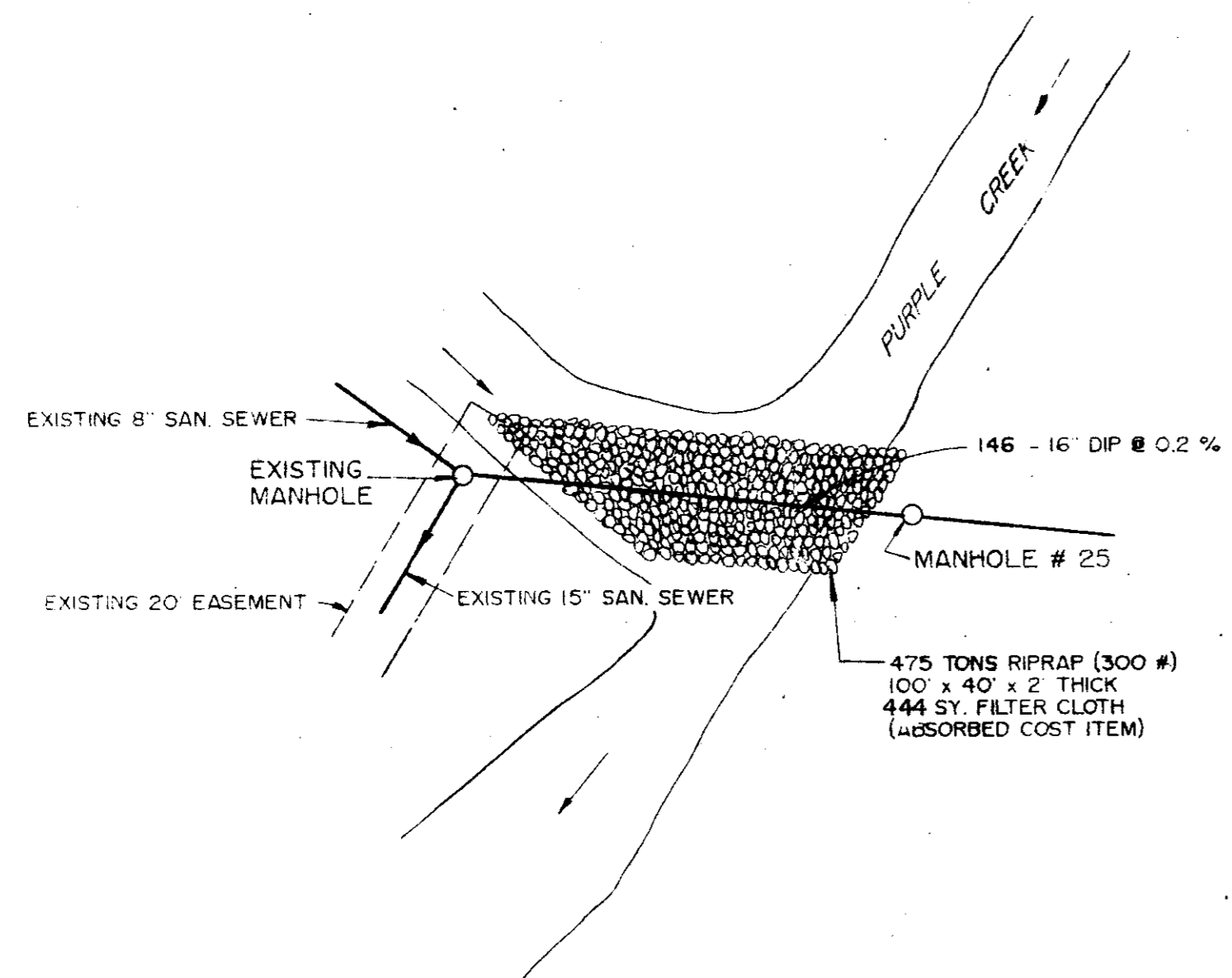
CURVE DATA
 $\Delta = 95^\circ 55' 48''$
 $R = 129.00'$
 $T = 218.98'$
 $LC = 191.63'$
 $E = 143.09'$

WEST PARKWAY PLACE

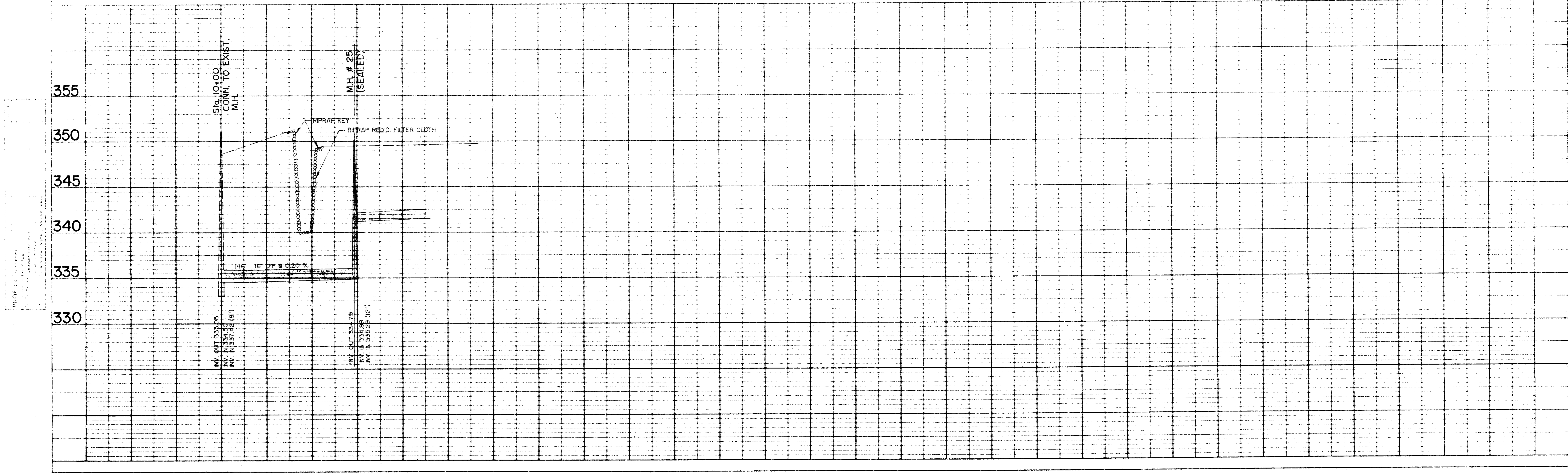
PROFILE	DATE
NO. 1	11/11/11
NO. 2	11/11/11
NO. 3	11/11/11
NO. 4	11/11/11
NO. 5	11/11/11
NO. 6	11/11/11
NO. 7	11/11/11
NO. 8	11/11/11
NO. 9	11/11/11
NO. 10	11/11/11



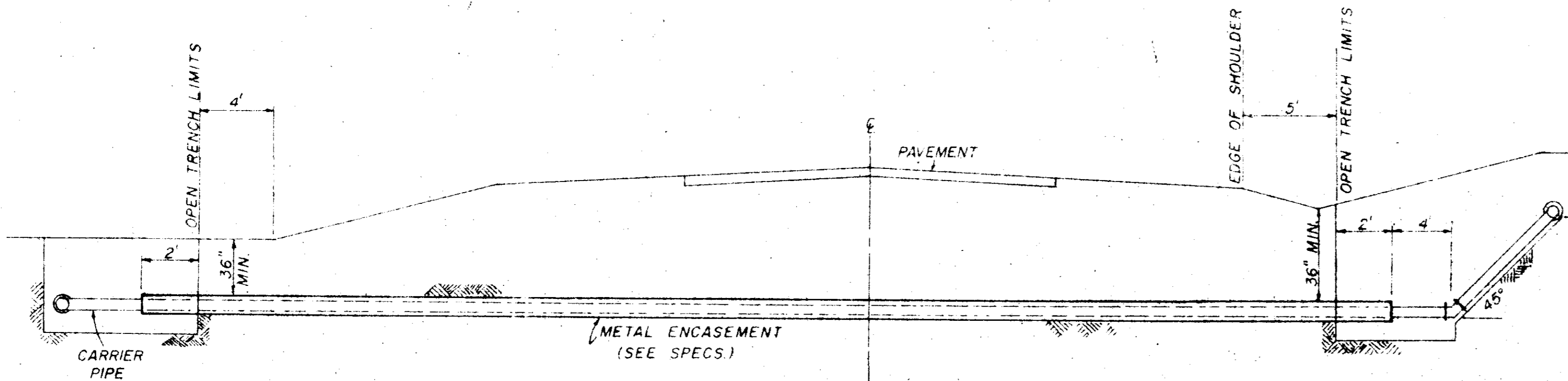
PLAN
 PROJECT: [illegible]
 SHEET: [illegible]
 DATE: [illegible]



SANITARY SEWER

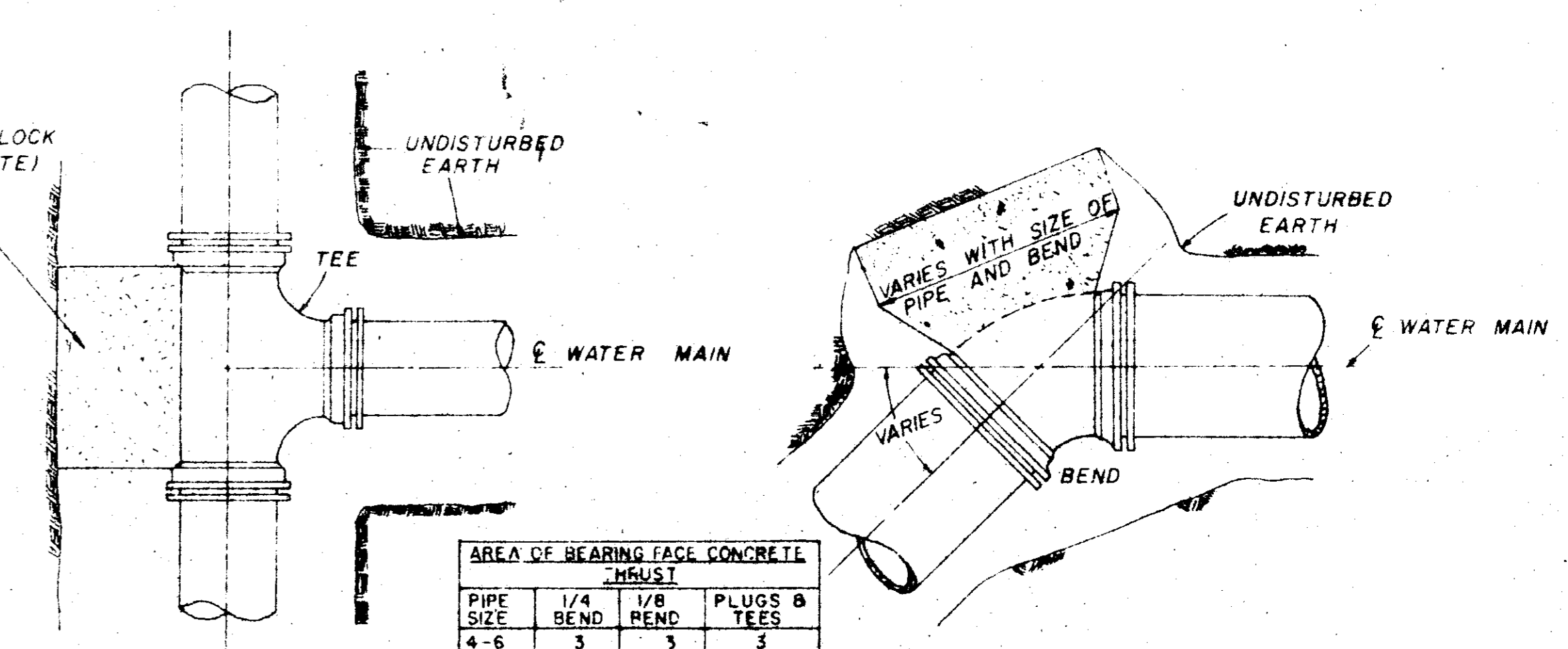


PROFILE
 PROJECT: [illegible]
 SHEET: [illegible]
 DATE: [illegible]



TYPICAL CASSED CROSSING

NOTE: COMPENSATION FOR CONCRETE THRUST BLOCKS SHALL BE INCLUDED IN THE UNIT PRICE BID FOR VALVES, FIRE HYDRANTS AND FITTINGS.

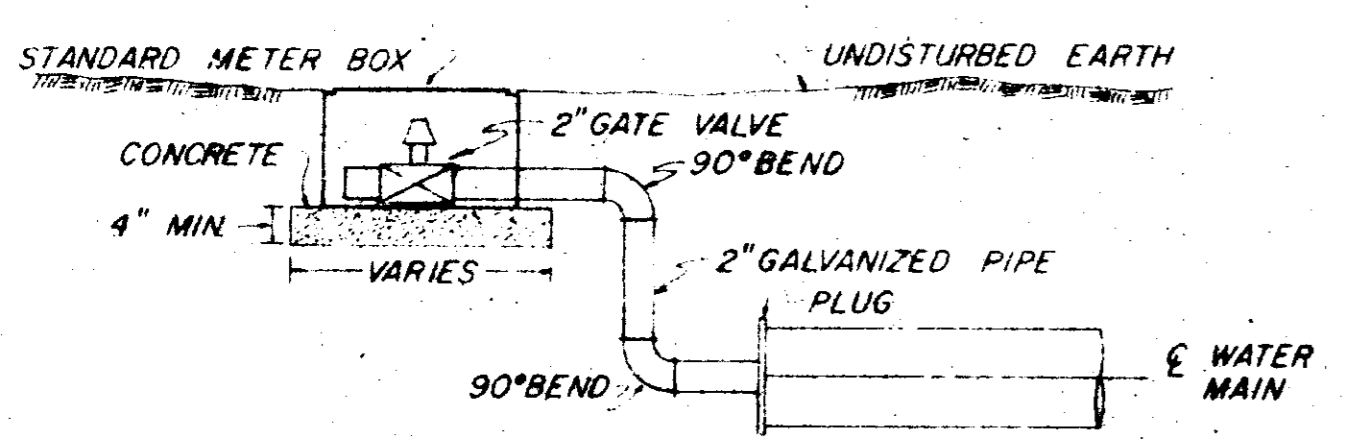


PLAN

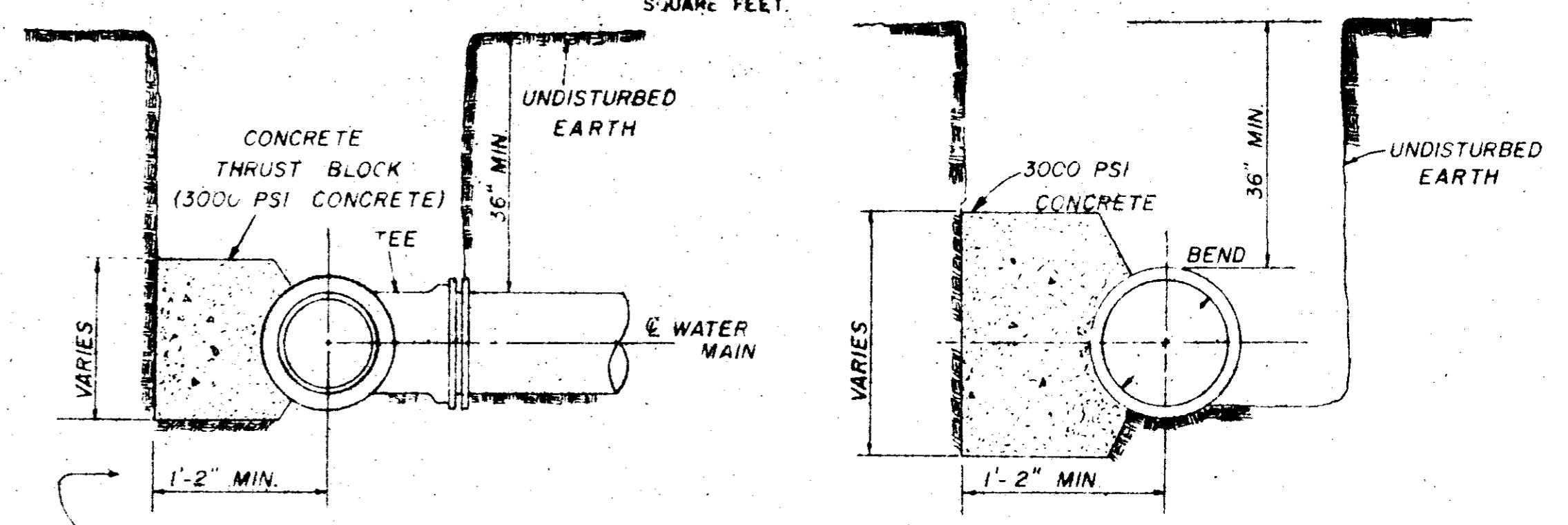
PLAN

PIPE SIZE	1/4 BEND	1/8 BEND	PLUGS	TEES
4-6	3	3	3	3
8	3	3	3	3
10	4	3	3	3
12	6	3	4	4
16	11	4	7	7

NOTE: AREA OF BEARING FACE IN SQUARE FEET.



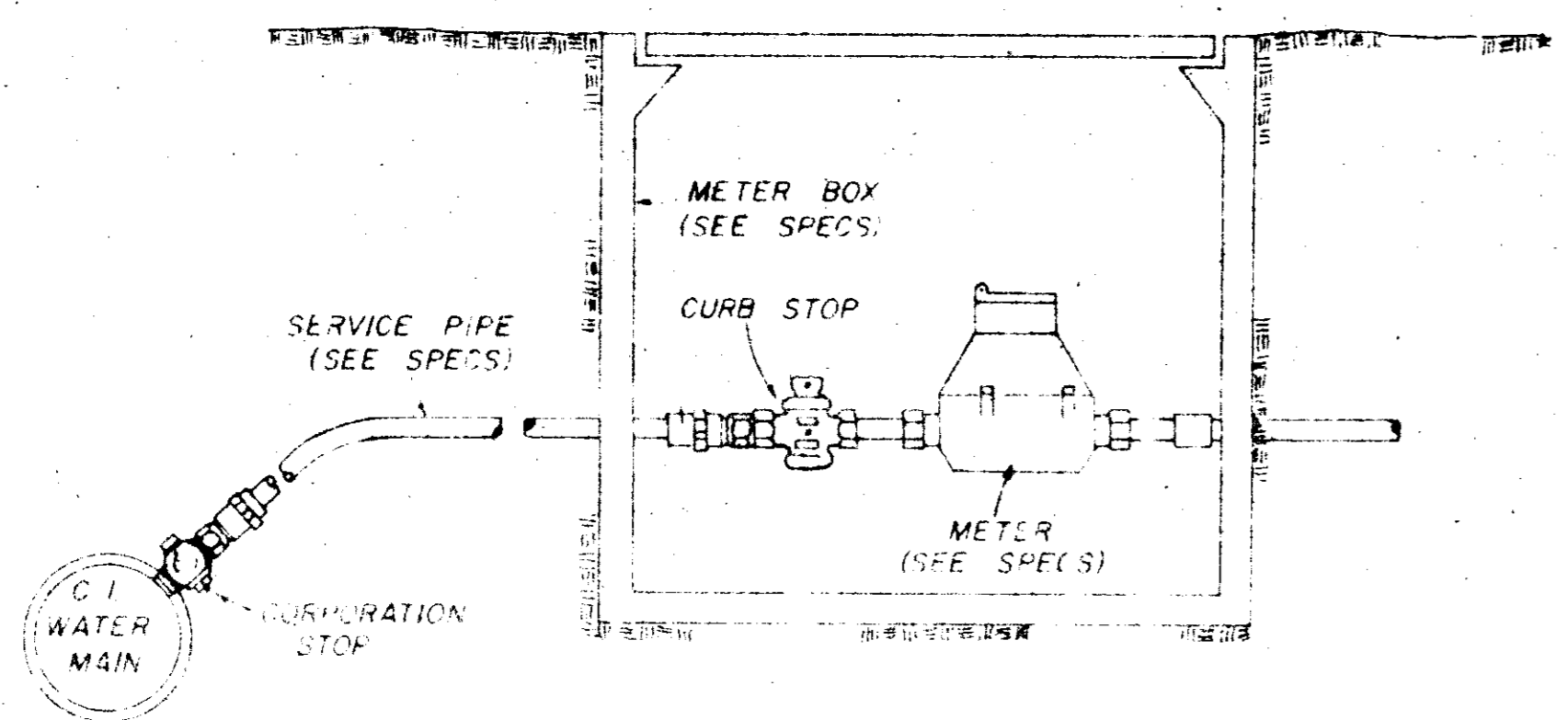
TYPICAL 2" BLOW-OFF DETAIL



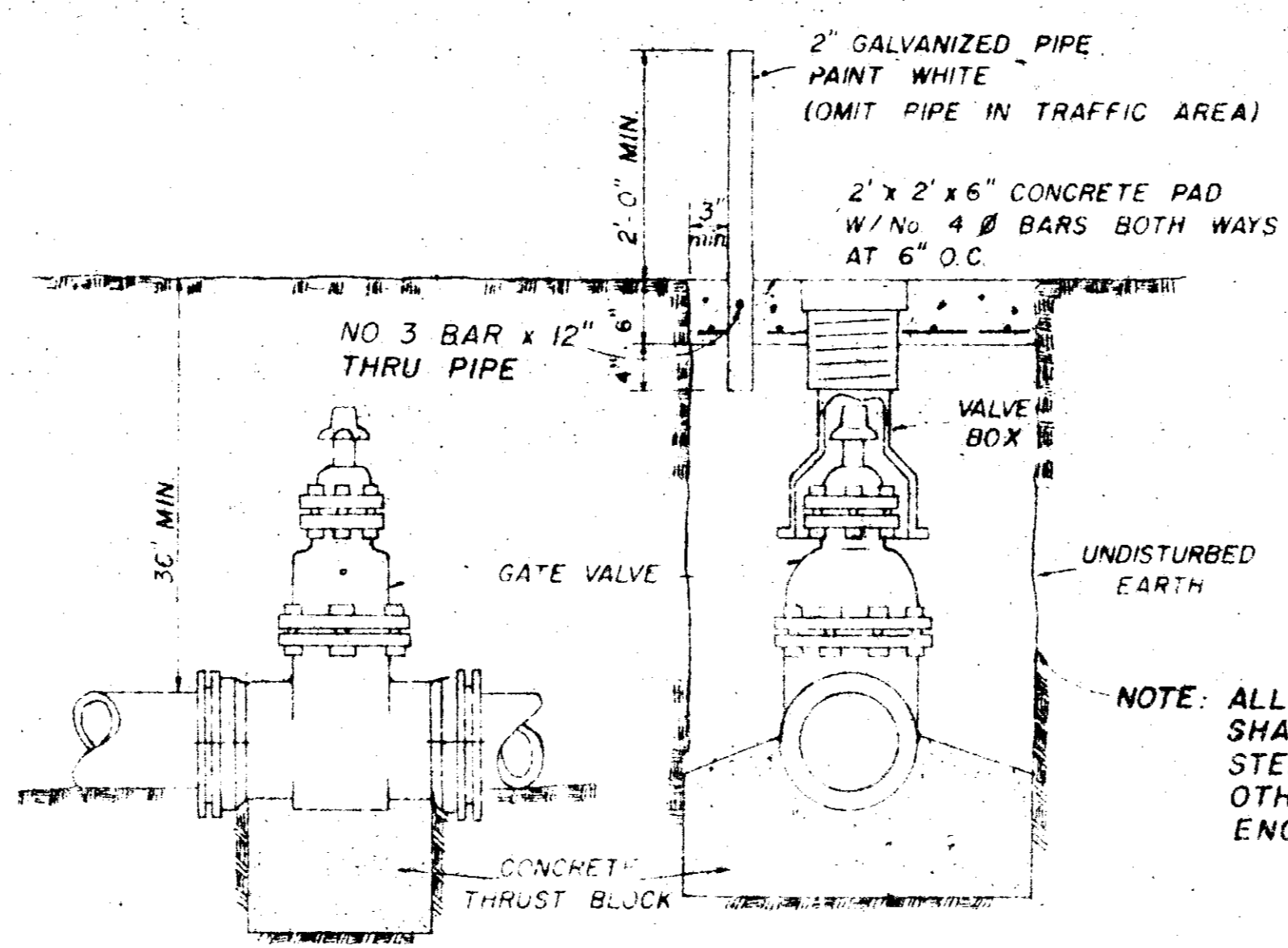
SECTION

SECTION

BLOCKING DETAILS FOR TEES & BENDS



TYPICAL SERVICE ASSEMBLY

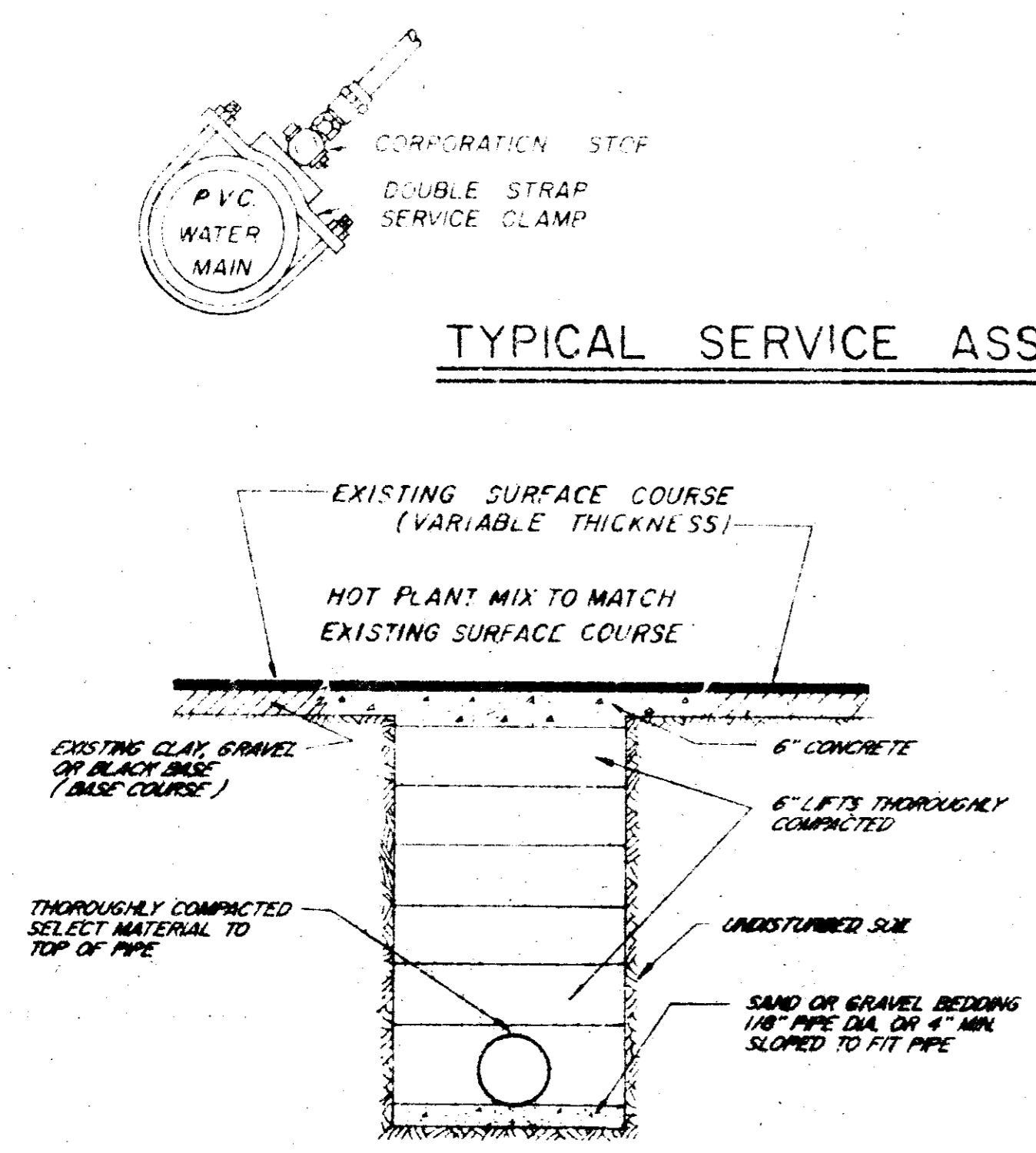


ELEVATION

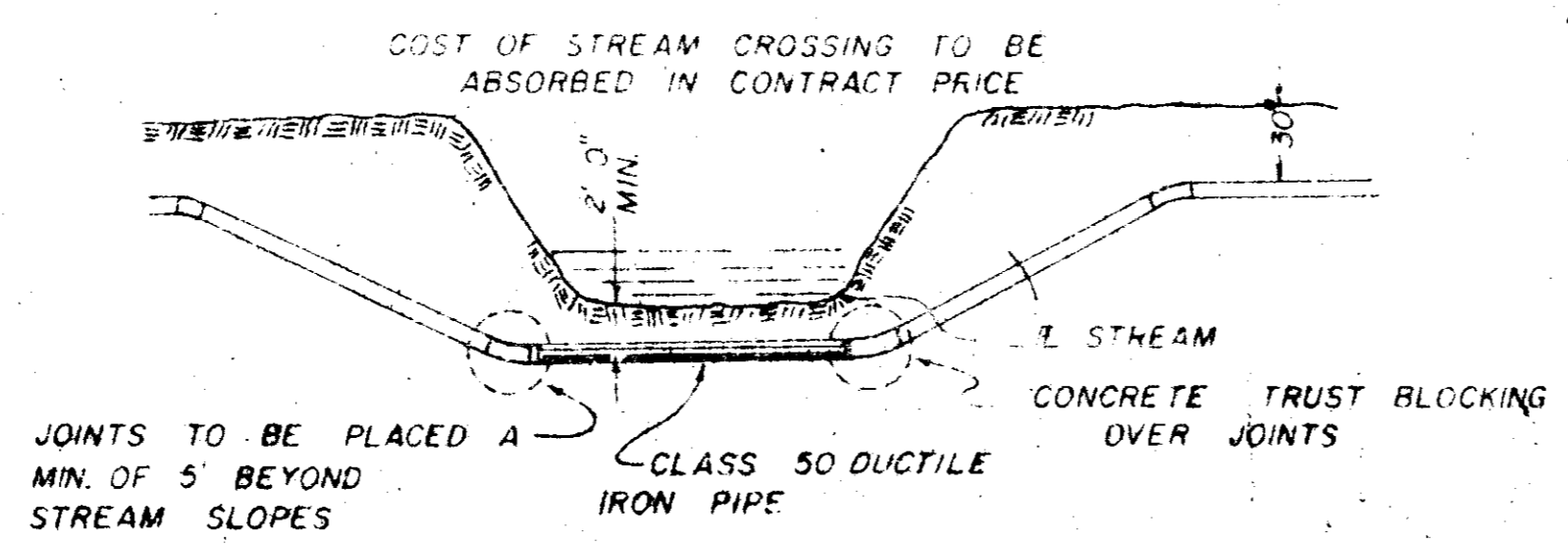
SECTION

TYPICAL VALVE & BOX

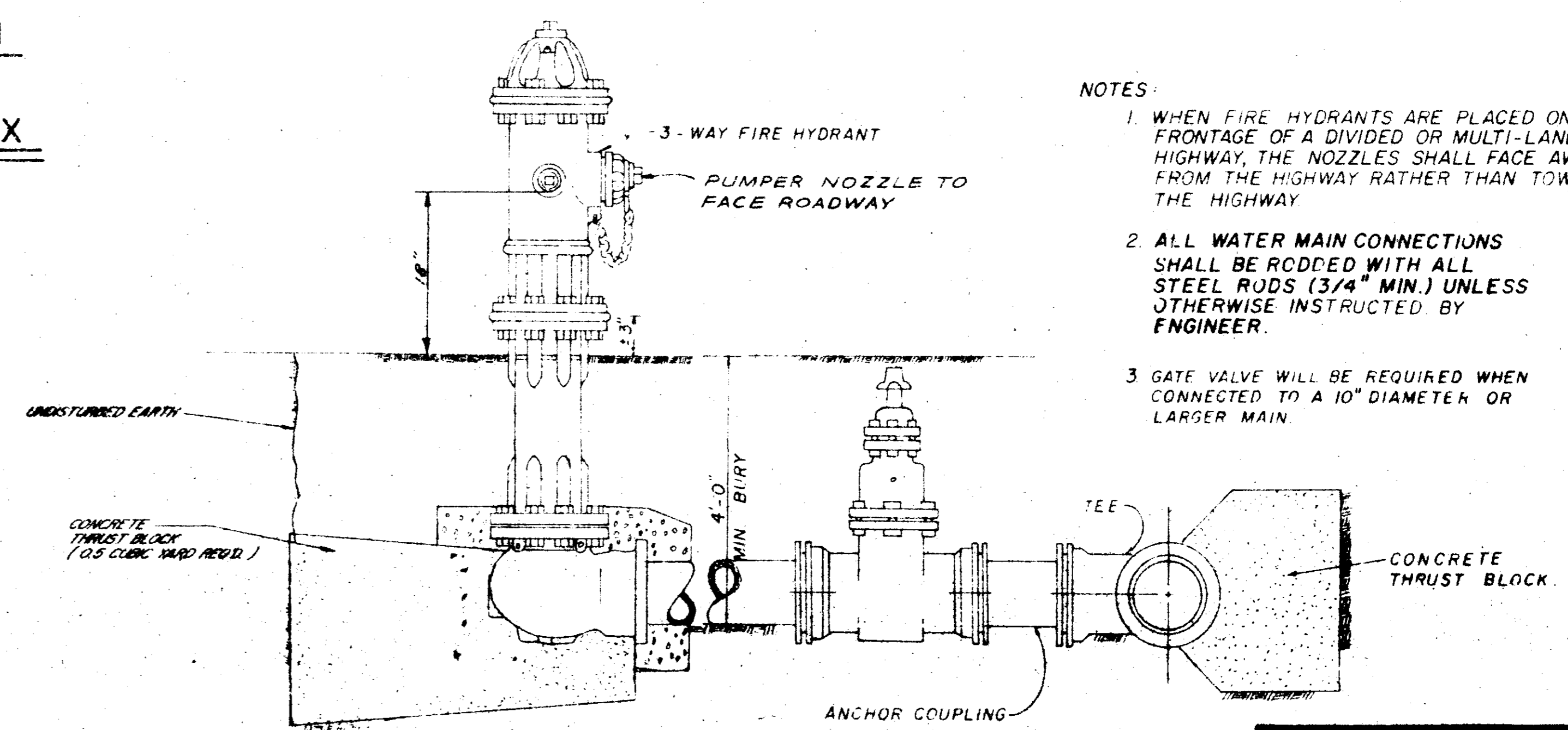
NOTE: ALL WATER MAIN CONNECTIONS SHALL BE RODDED WITH ALL STEEL RODS (3/4" MIN) UNLESS OTHERWISE INSTRUCTED BY ENGINEER.



STREET REPAIR OF OPEN CUT



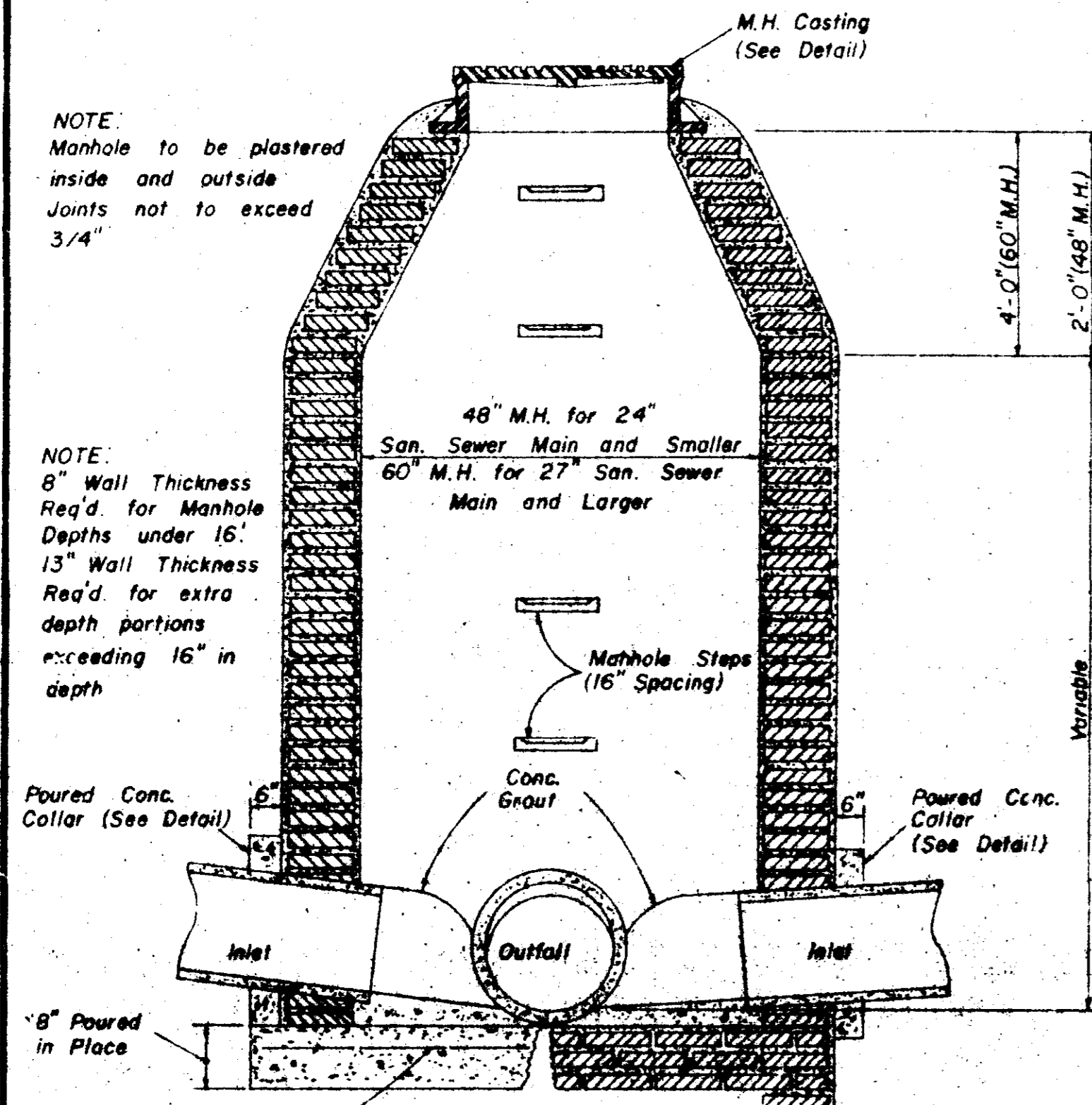
TYPICAL STREAM CROSSING



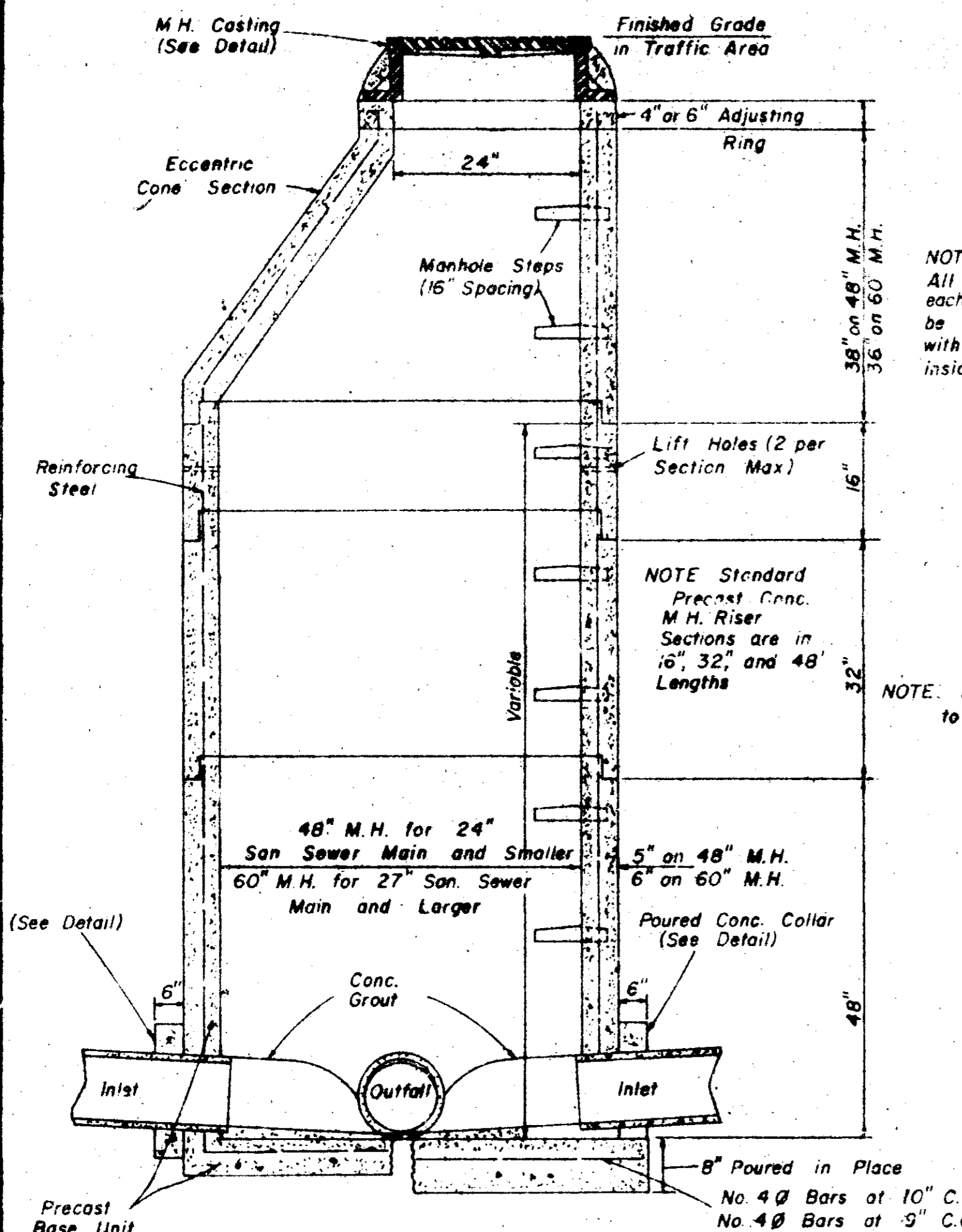
TYPICAL FIRE HYDRANT

- NOTES:
1. WHEN FIRE HYDRANTS ARE PLACED ON THE FRONTAGE OF A DIVIDED OR MULTI-LANE HIGHWAY, THE NOZZLES SHALL FACE AWAY FROM THE HIGHWAY RATHER THAN TOWARD THE HIGHWAY.
 2. ALL WATER MAIN CONNECTIONS SHALL BE RODDED WITH ALL STEEL RODS (3/4" MIN.) UNLESS OTHERWISE INSTRUCTED BY ENGINEER.
 3. GATE VALVE WILL BE REQUIRED WHEN CONNECTED TO A 10" DIAMETER OR LARGER MAIN.

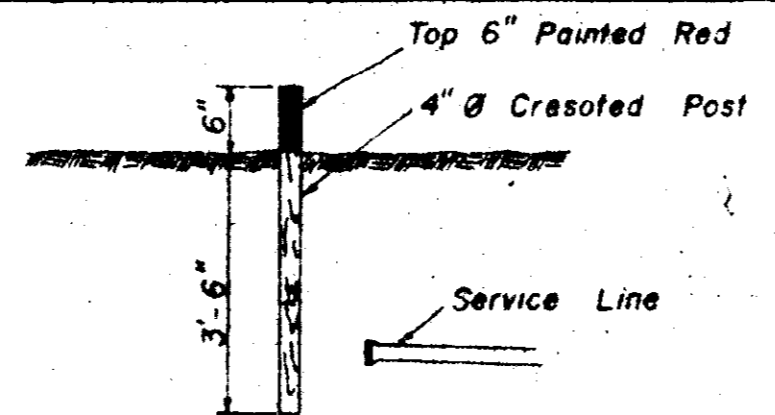
WATER SYSTEM STANDARD DETAILS



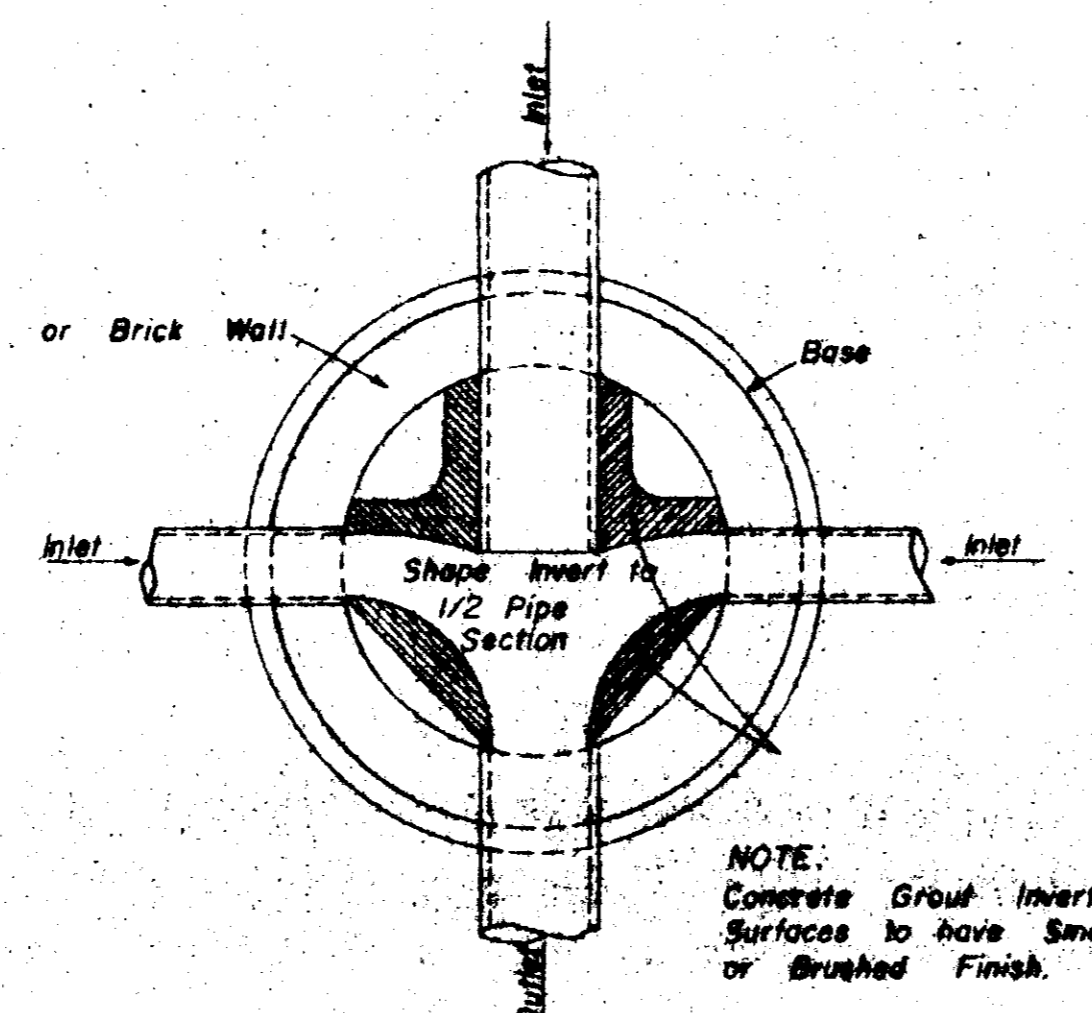
SECTION
STANDARD BRICK MANHOLE



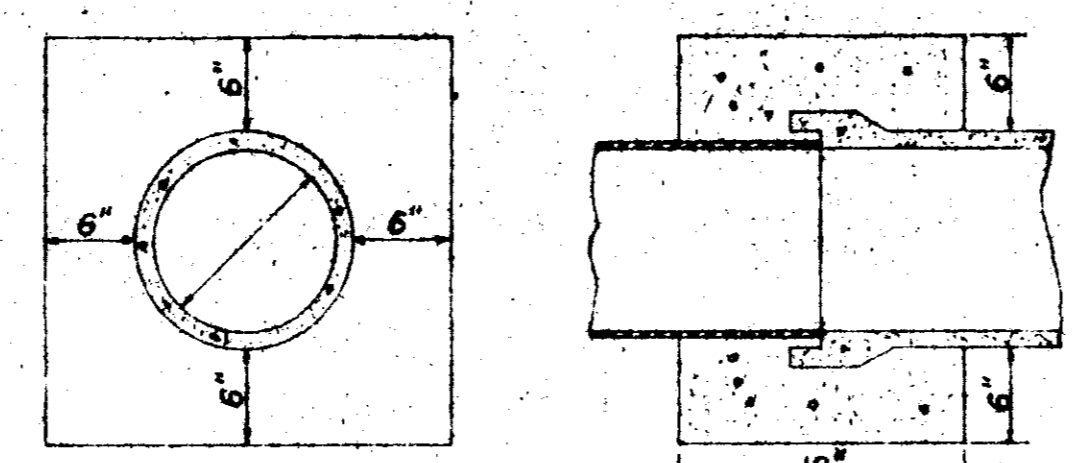
SECTION
PRECAST CONCRETE MANHOLE



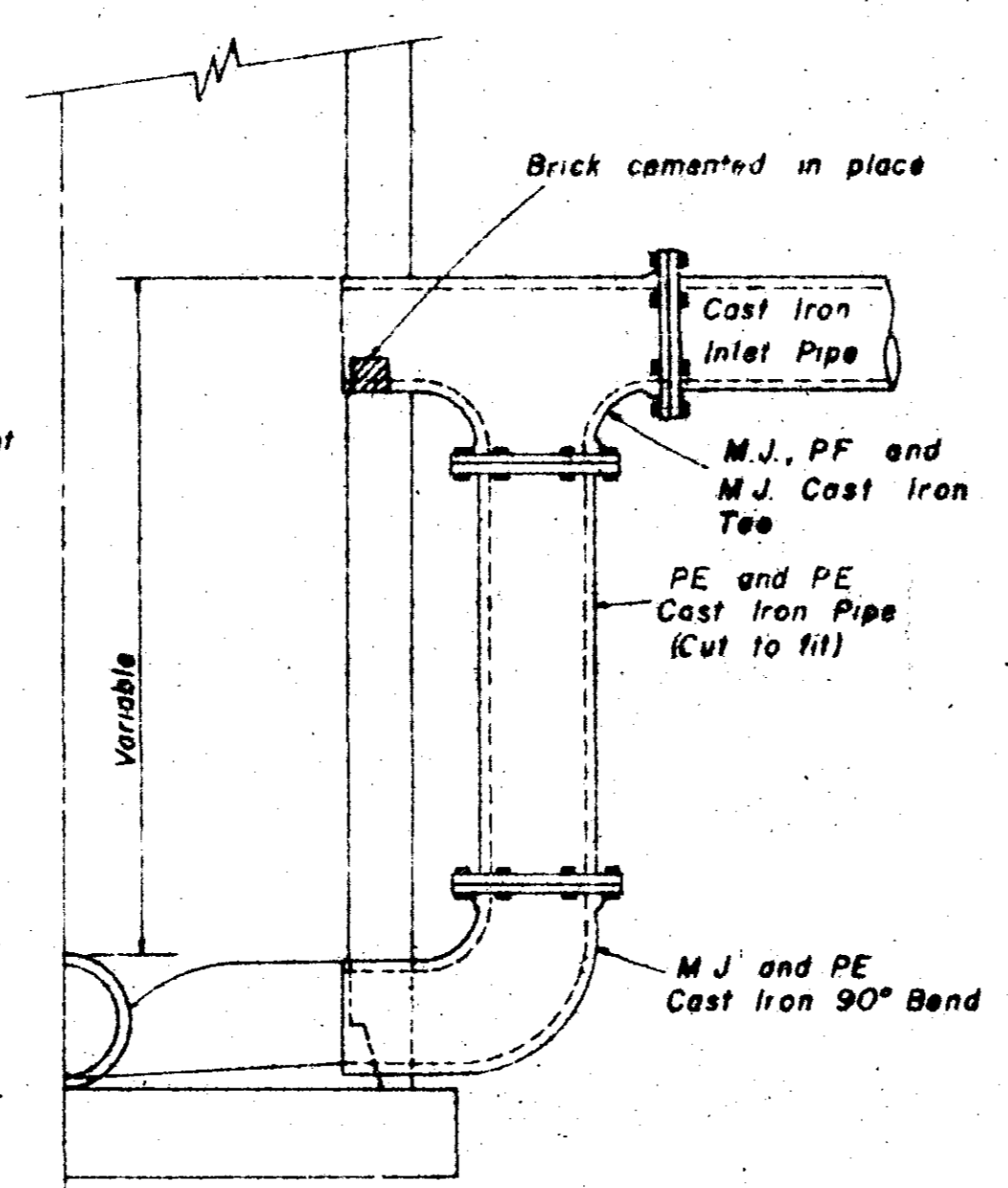
SEWER SERVICE MARKER



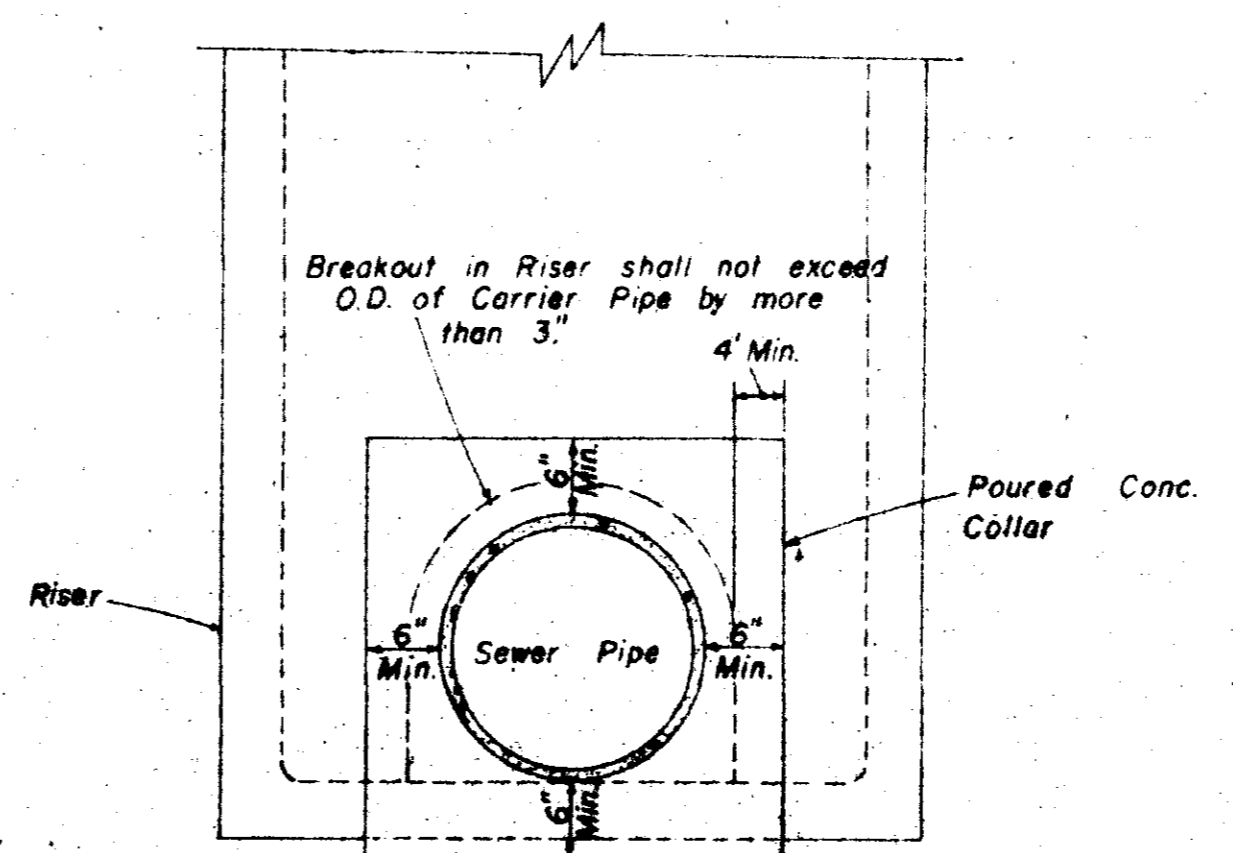
PLAN OF MANHOLE
FLOW CHANNELS



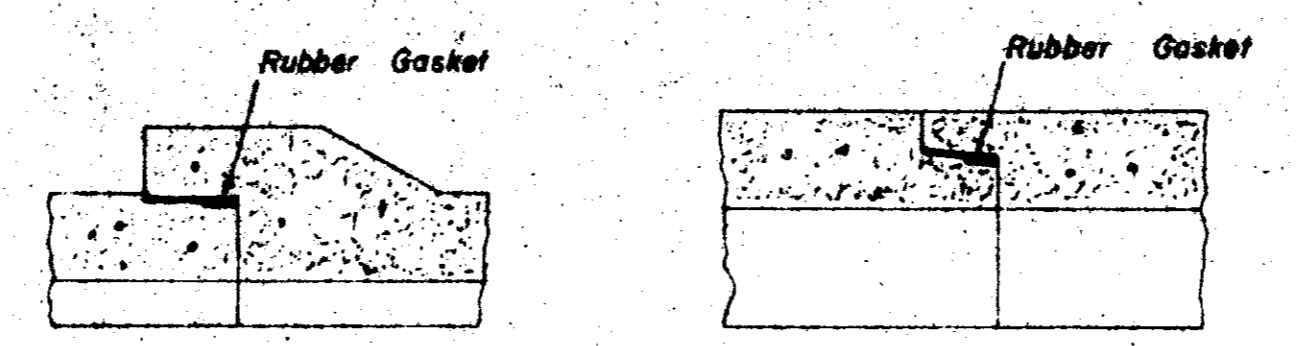
ELEVATION
SECTION
CONCRETE COLLAR DETAILS



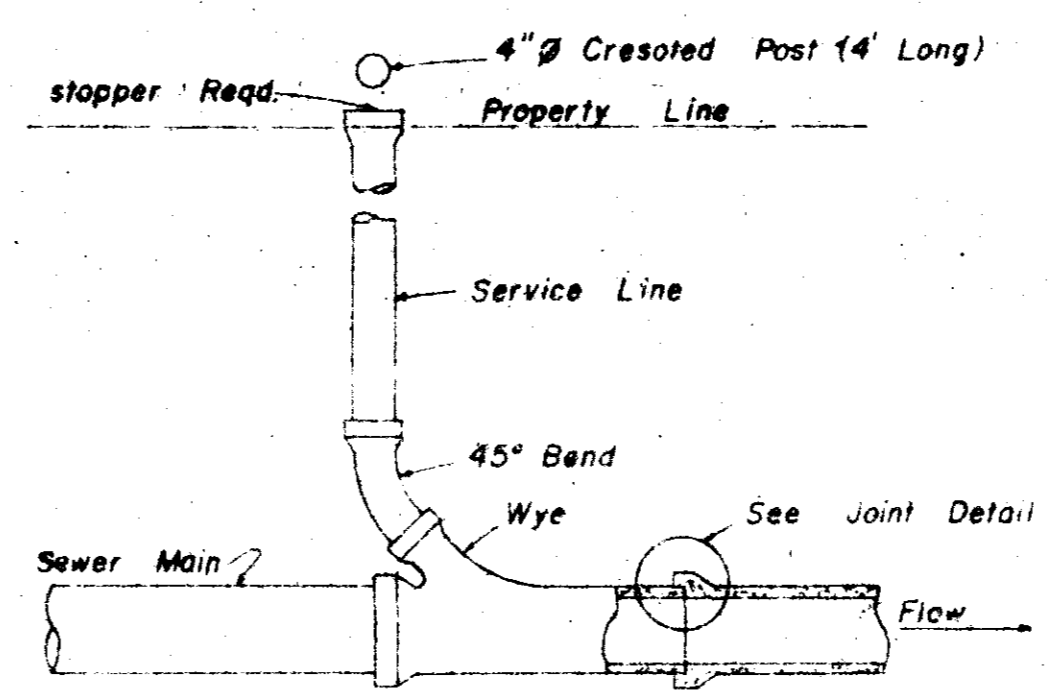
HALF SECTION
MANHOLE WITH DROP CONNECTION



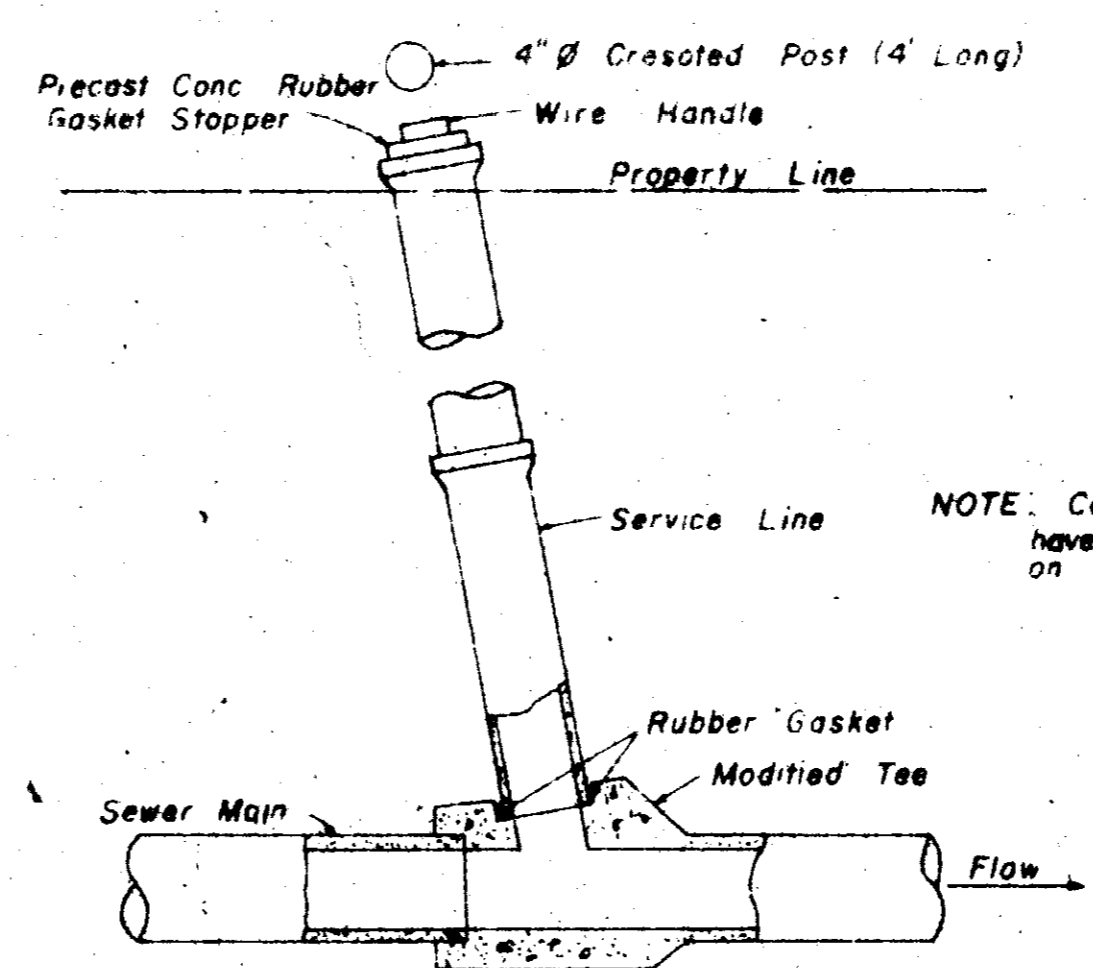
ELEVATION
CONCRETE COLLAR AT
MANHOLE CONNECTION



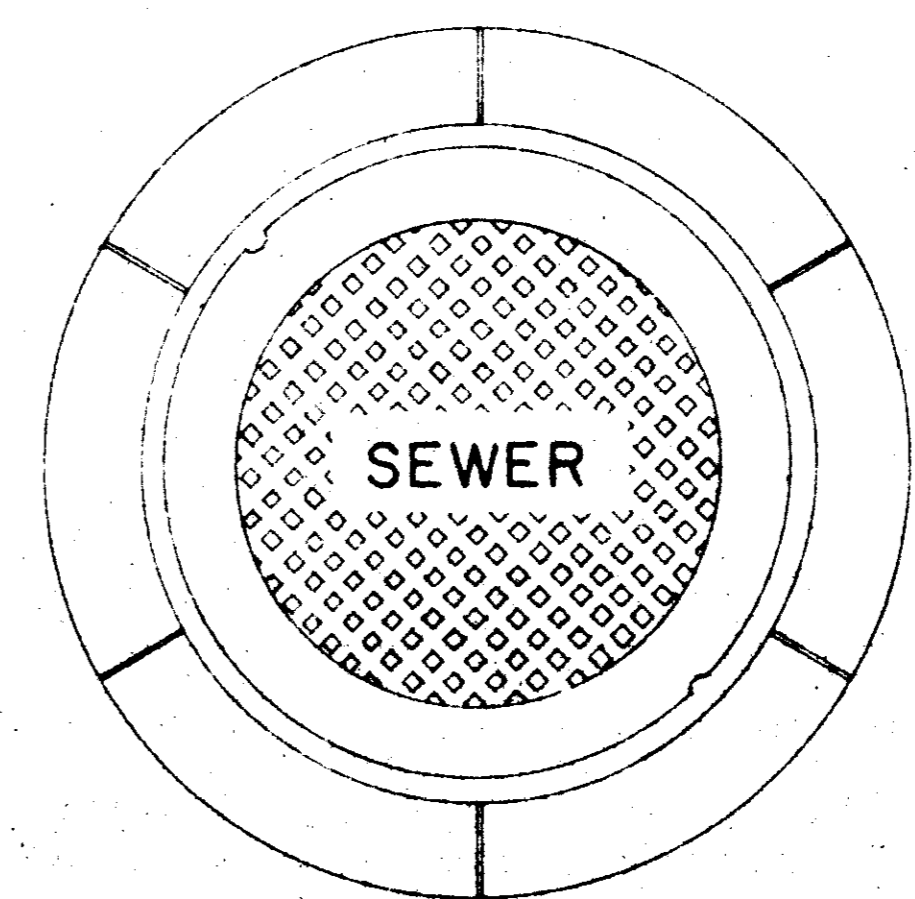
BELL & SPIGOT
JOINT DETAILS



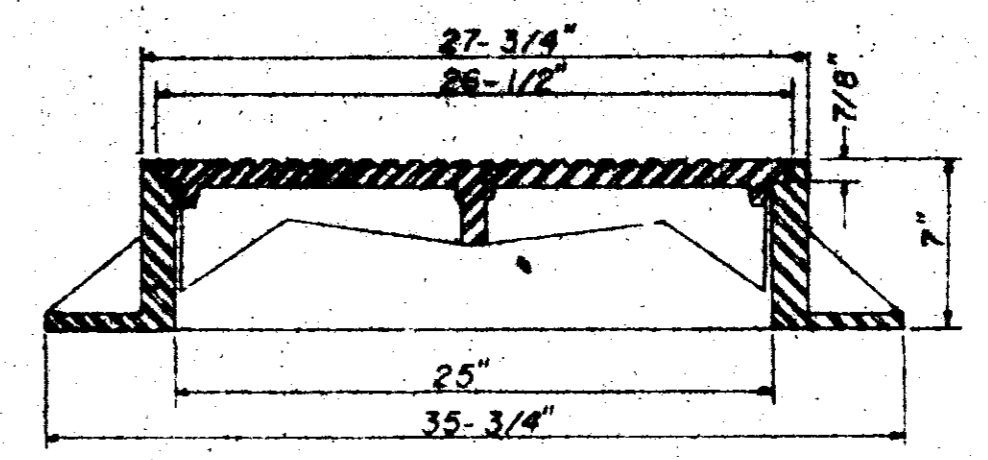
TYPICAL SERVICE TO PROPERTY LINE
WITH WYE JOINT



TYPICAL SERVICE TO PROPERTY LINE
WITH MODIFIED TEE JOINT

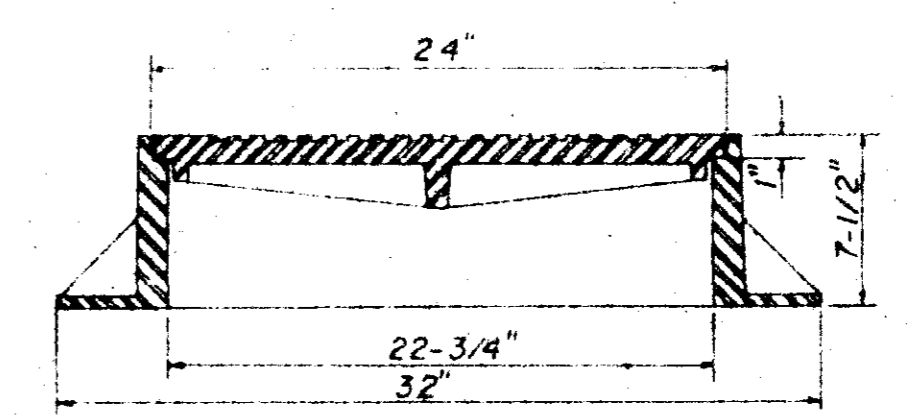


PLAN
MANHOLE CASTING



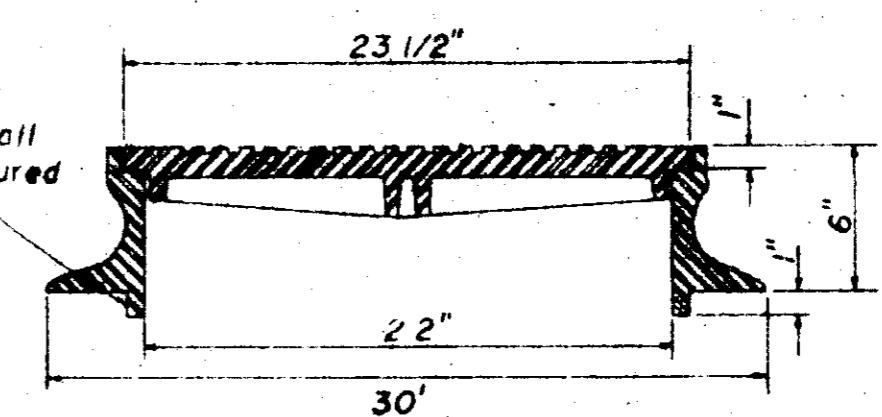
SECTION
TYPE "A" MANHOLE CASTING

NOTE: 1. Use Type "A" Manhole Casting in Street R.O.W.
2. Use Harper No. 2, City of Jackson Standard (420 lbs.) or Vulcan No. VM-15, City of Jackson Standard (420 lbs.)



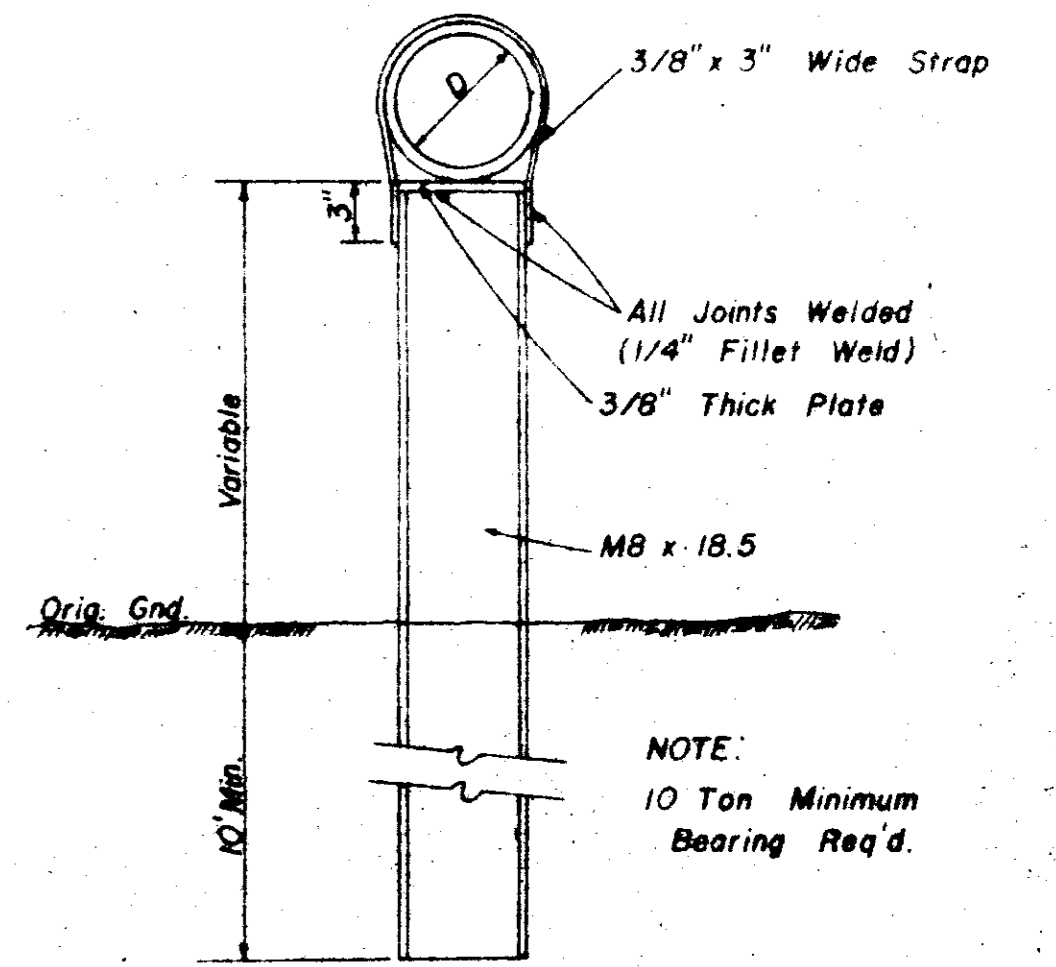
SECTION
TYPE "B" MANHOLE CASTING

NOTE: 1. Use Type "B" Manhole Casting for any Manhole not in a Street R.O.W.
2. Use Harper No. 1 (M.S.P.E. Standard) Light Weight (330 lbs.) or Vulcan No. VM-17 (300 lbs.) or Opelika Foundry No. C-2-1 (325 lbs.)

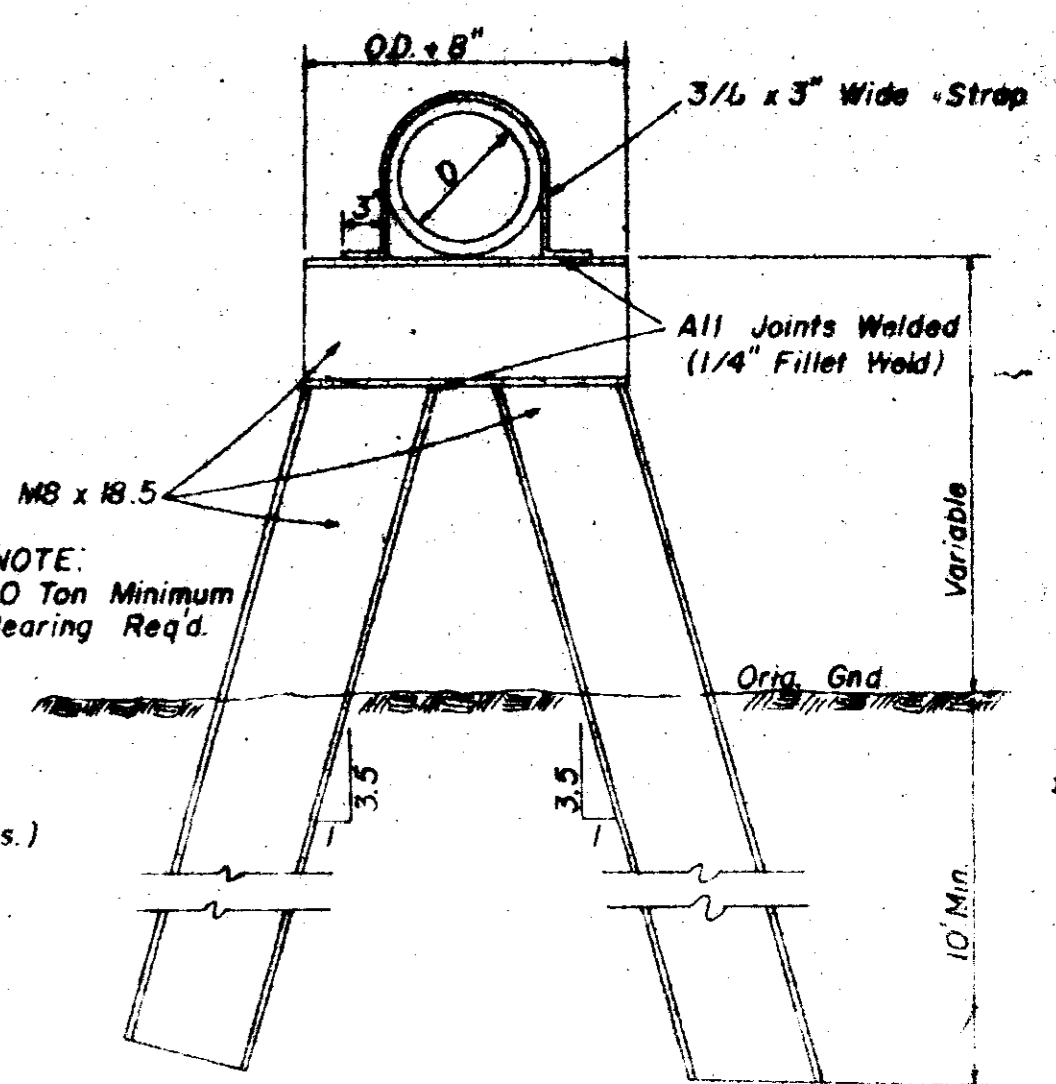


SECTION
TYPE "C" MANHOLE CASTING

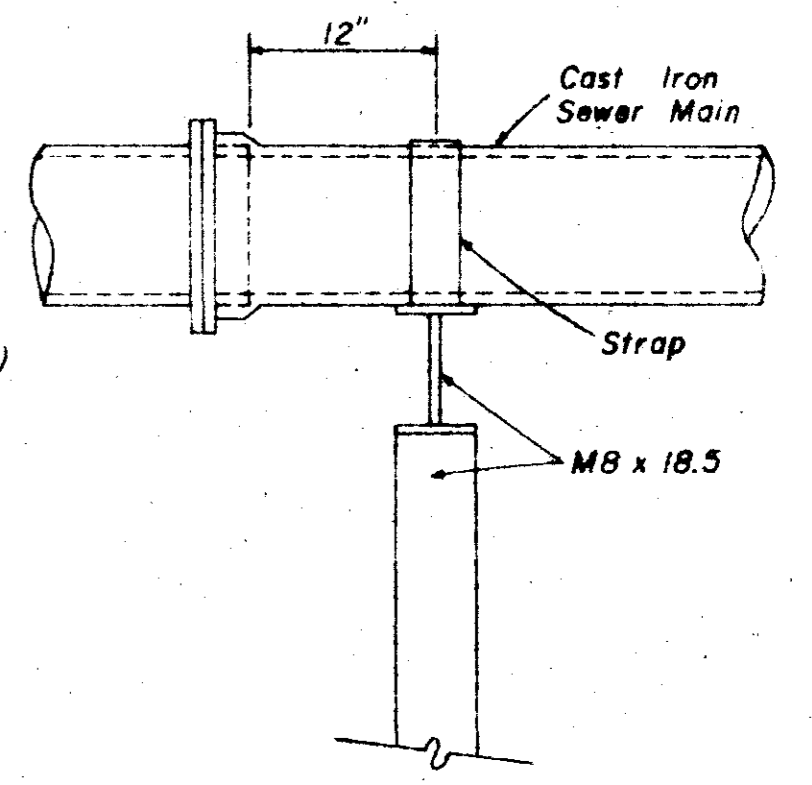
NOTE: 1. Use Type "C" Manhole Casting for Precast Manhole not in a Street R.O.W.
2. Use Harper No. 8 (330 lbs.) or Neenah No. R-1779 (300 lbs.) or Vulcan No. VM-7 (330 lbs.)



DETAIL
TYPE "A" PIER



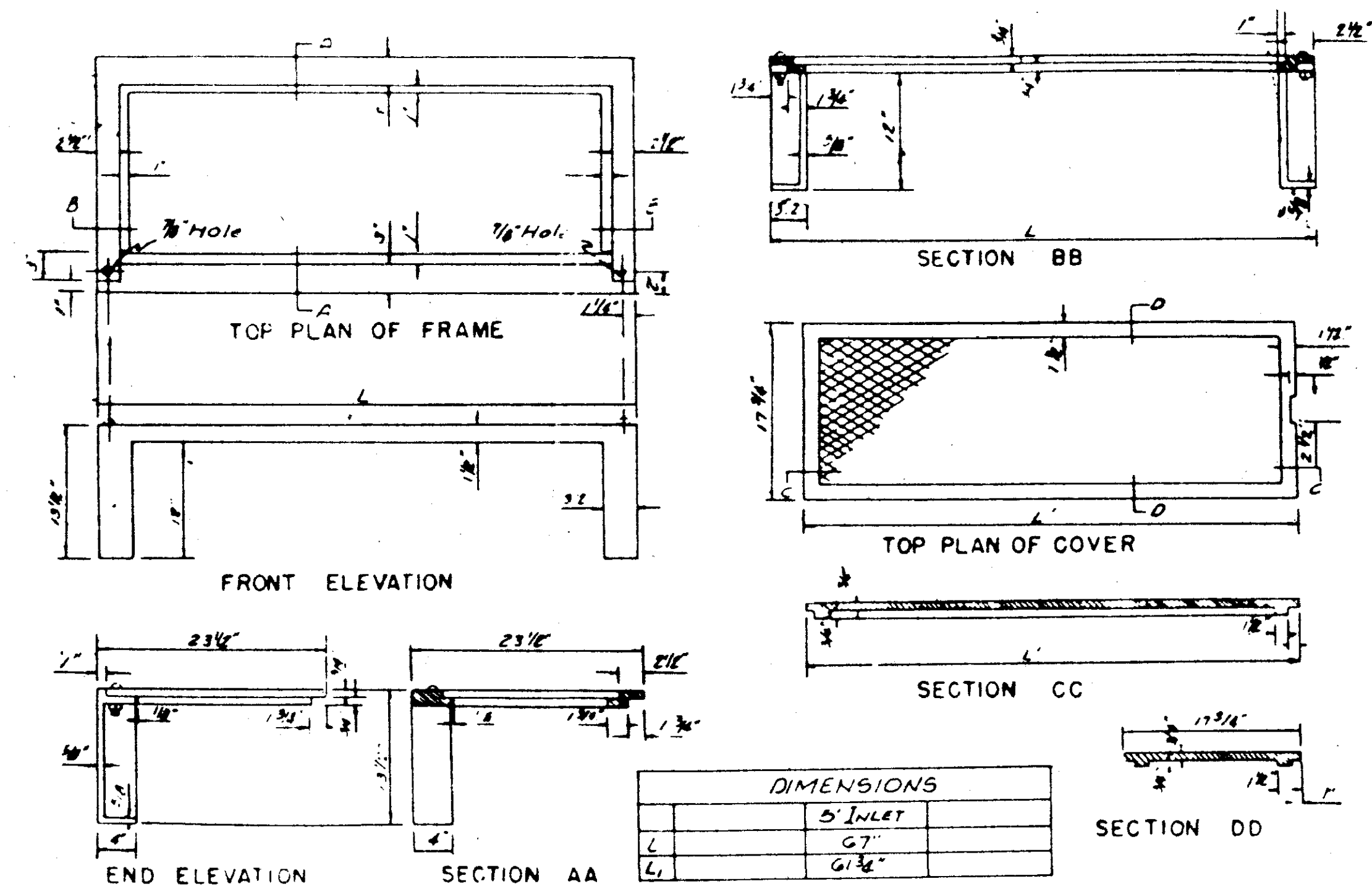
DETAIL
TYPE "B" PIER



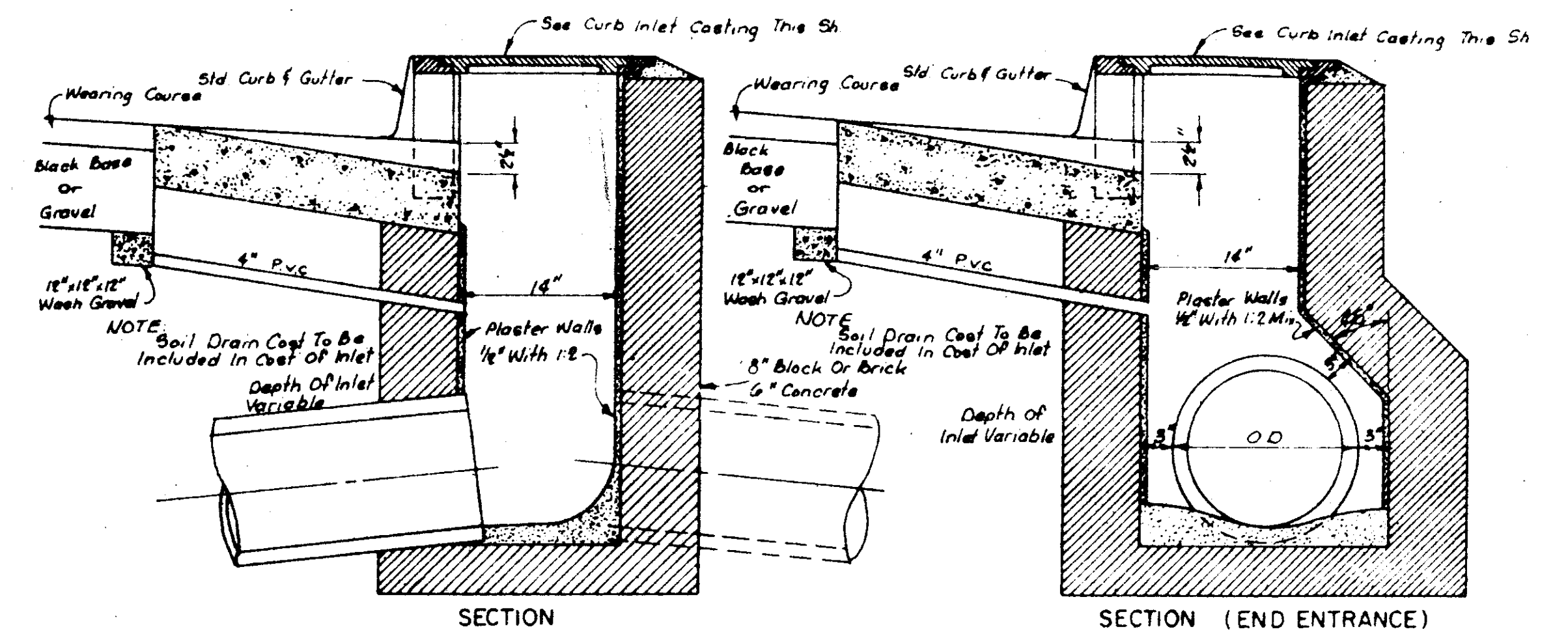
SIDE ELEVATION
TYPE "B" PIER

SANITARY SEWER
STANDARD DETAILS

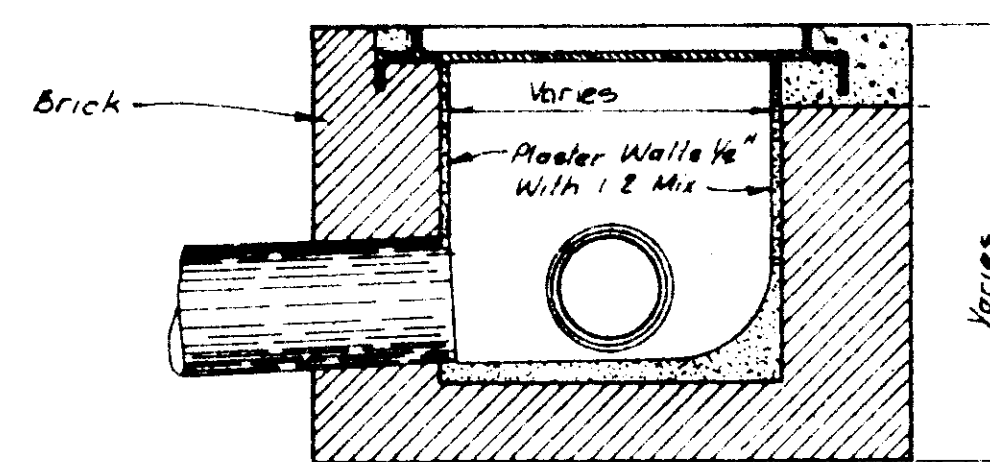
BROWNING INC.			
Consulting Engineers Jackson, Mississippi			
DRAWN BY: JF	DATE: JAN, 1995	SCALE: AS SHOWN	10 OF 11
CHECKED BY: PLB			



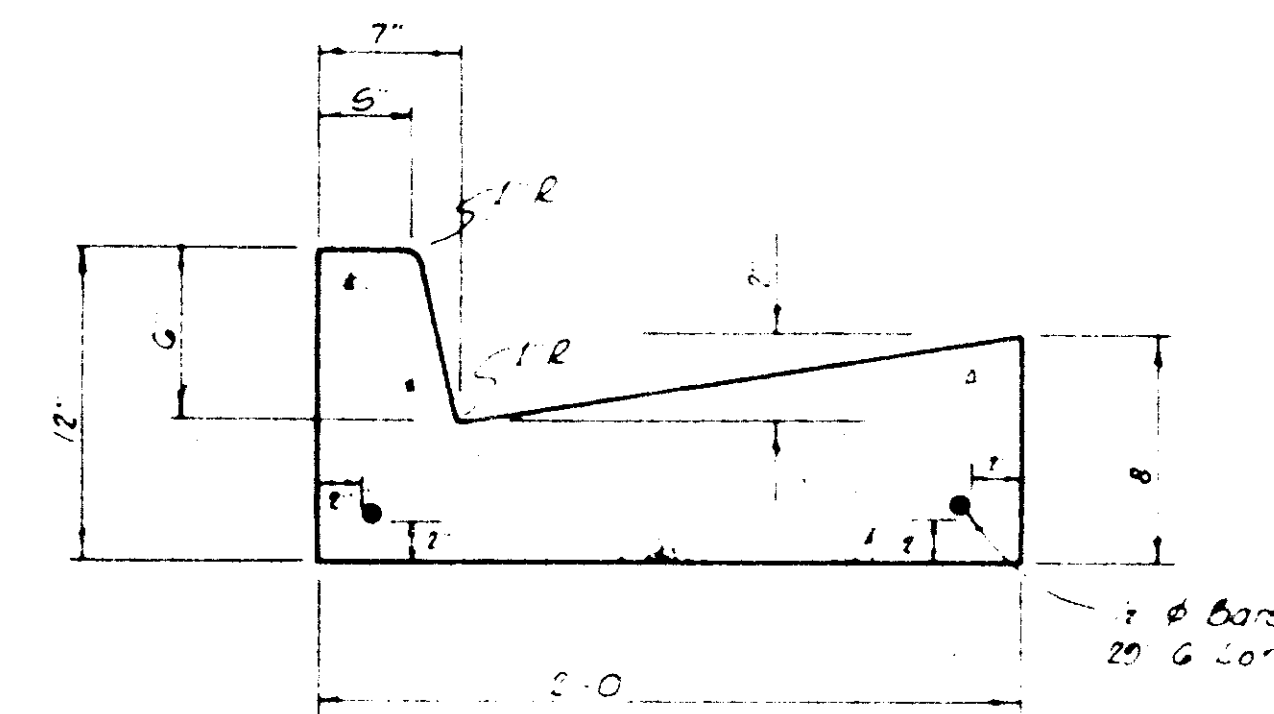
STANDARD CURB INLET CASTING



STANDARD CURB INLET



DROP INLET WITH 24" NON-TRAFFIC OPEN GRATE



STANDARD CURB & GUTTER

NOTE Water Service Connections Shall Be Marked In The Face Of The Curb With A "W" And The Sanitary Sewer Service Connections Shall Be Marked With An "S"