

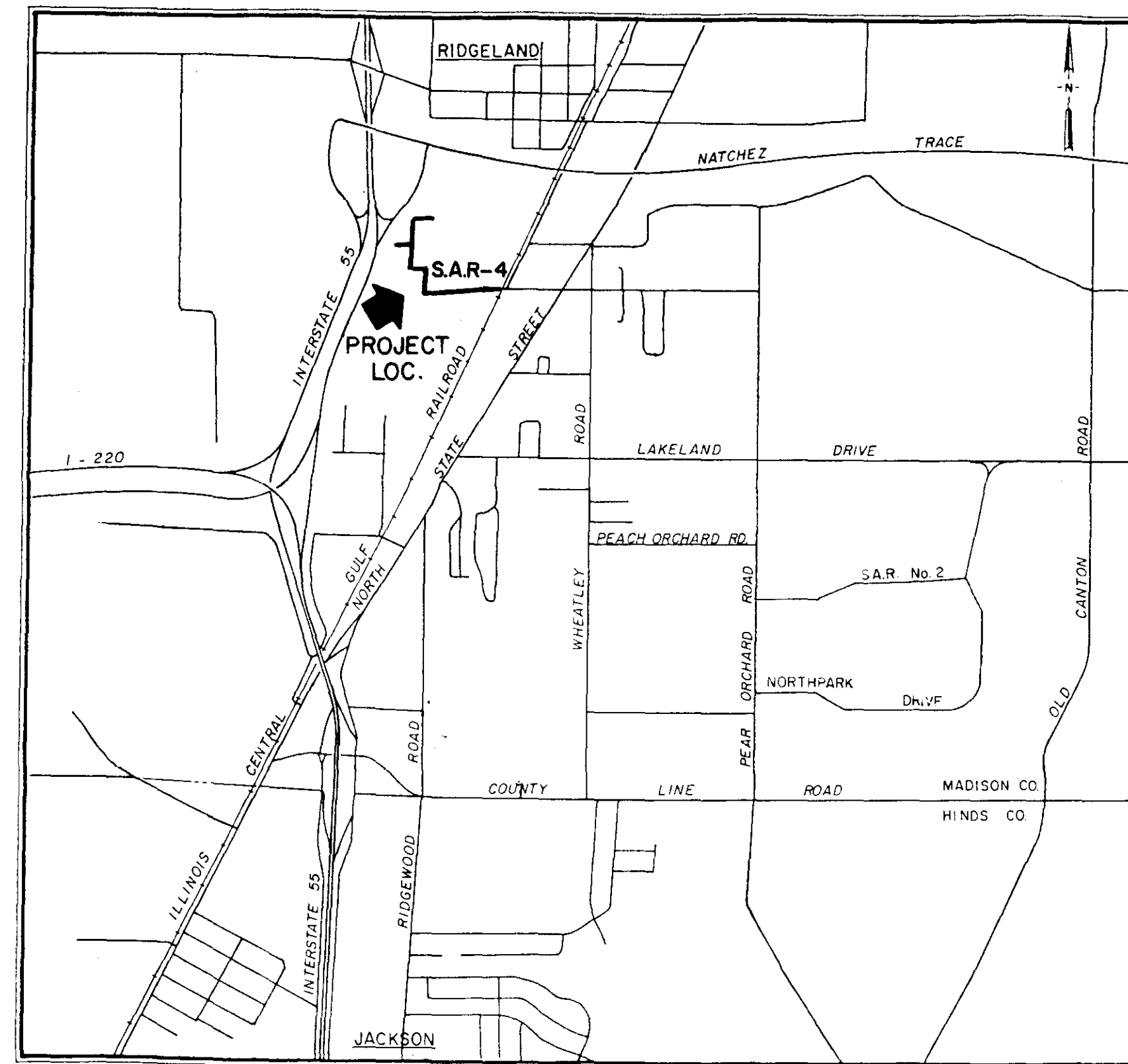
CITY OF RIDGELAND, MISSISSIPPI

SPECIAL ASSESSMENT IMPROVEMENTS PROJECT NO. 4 STREET & UTILITY IMPROVEMENTS

Mayor:
Hite B. Wolcott

Mayor Pro Tem:
Hilda Boyd

City Attorney:
Milton Case



Aldermen:
Al Bible
Hilda Boyd
Harvey Carr, Jr.
Gene McGee
Gilbert Sollek

Public Works Superintendent:
Horace Ross

JUNE 1986

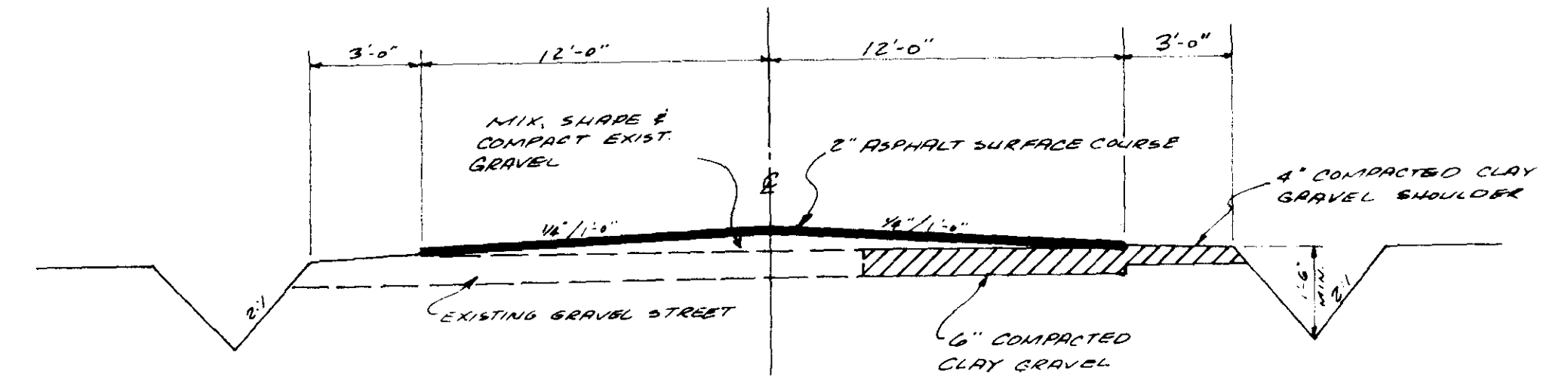
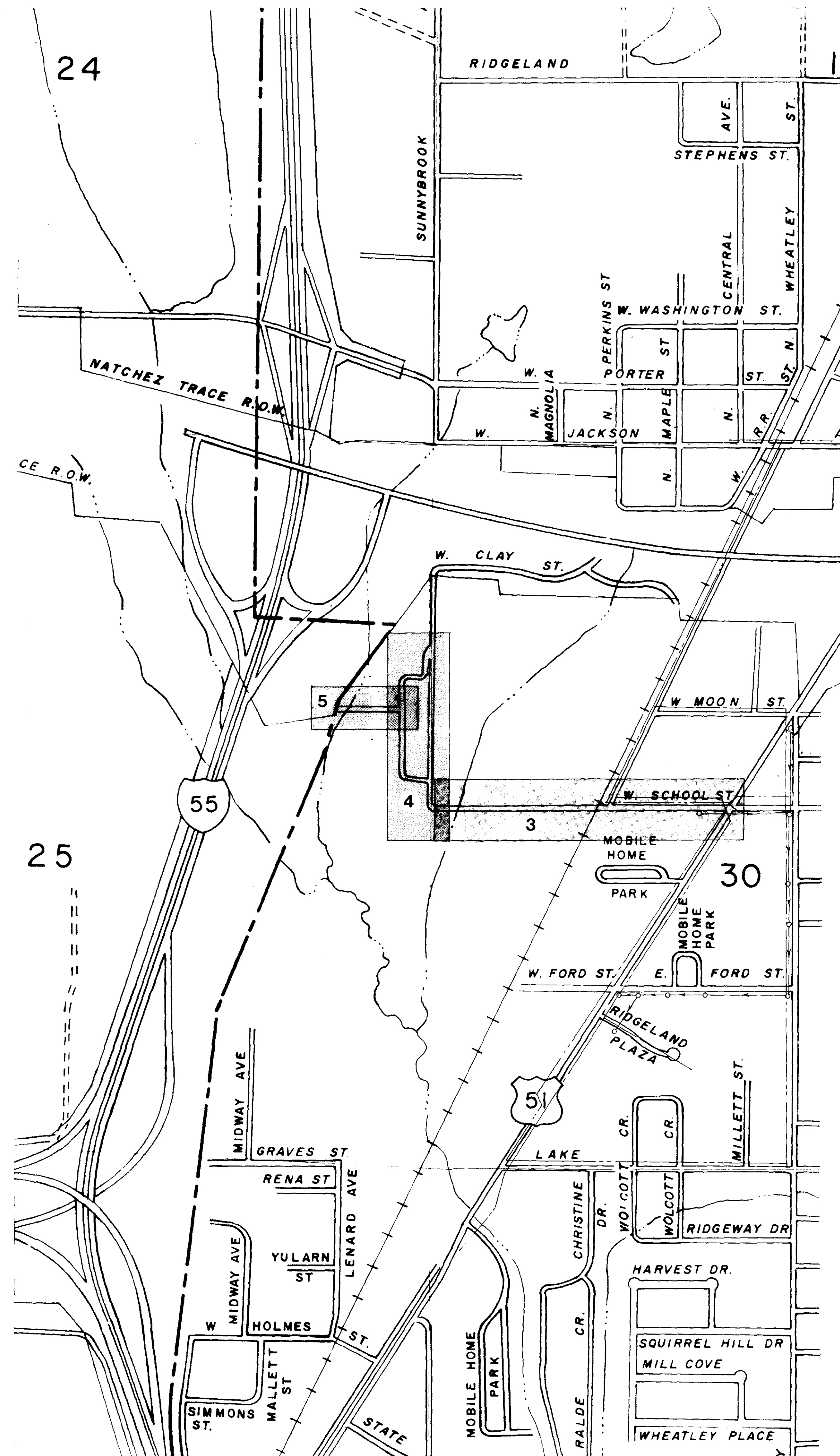
WAGGONER ENGINEERING INC.
Consulting Engineers
Jackson Brandon Mississippi

RECORD
DRAWINGS
FEBRUARY 1988

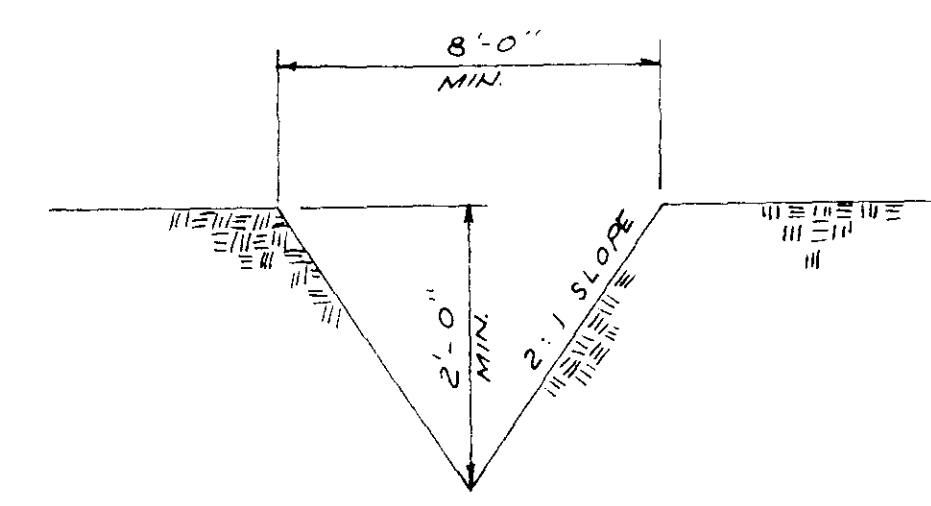
PWP-01912

GENERAL NOTES

1. The existing utility locations shown on plans are approximate only. The Contractor shall coordinate the location of the existing utilities (power, telephone, gas, water, sewer, etc.) with the appropriate utility company before construction begins.
2. Any utility line or service line encountered during construction, whether shown on plans or not, shall be protected by the Contractor at no additional cost to the City.
3. The Contractor shall be responsible for verifying horizontal and vertical clearances on all utility crossings before installation.
4. The Contractor shall fertilize and seed all areas where the existing vegetation was removed or disturbed during construction and not required to be solid sodded by the Engineer. The fertilizer shall be applied at a rate of 1200 lbs per acre. Seeding shall be as stated in the Specifications.
5. Unsuitable material which may be encountered shall be excavated to the limits shown in undercut schedule or as directed by the Engineer and backfilled with approved material.
6. Water, and storm pipe lengths may be varied in construction of project to conform to normal joint lengths - only with prior approval of Engineer.
7. Any TBM's indicated on plans which are or may be in conflict with construction activities shall be relocated by Engineer prior to commencement of construction in the immediate area.
8. All detailed construction staking will be by Engineer - one time only.
9. Engineer will provide off-set grade stakes and cut sheets for all curb and gutter and sanitary sewer and storm sewer pipe.
10. Engineer may vary number and location of FH's dependent on field determination.
11. All proposed water mains shall have minimum 36" cover, except at fire hydrant locations, where cover shall be adjusted to allow proper vertical placement of fire hydrant.
12. The Contractor shall be responsible for completing all sampling and testing of materials, and for submission of same to Engineer for approval prior to their use. This shall include select backfill, concrete, asphalt, aggregates, rip-rap and other items as specified by the Engineer. This shall be an absorbed item.
13. The Contractor shall obtain and furnish to the the Engineer copies of manufacturers certifications for all water and sewer piping, storm culverts, castings, valves, hydrants, fittings, tubing, sod and seed. Such certification shall state that the subject material meets the specified quality, grade, purity, class or weight, or that the subject material meets or exceeds the requirements of the applicable ASTM, AASHTO, AWWA, or other standards.



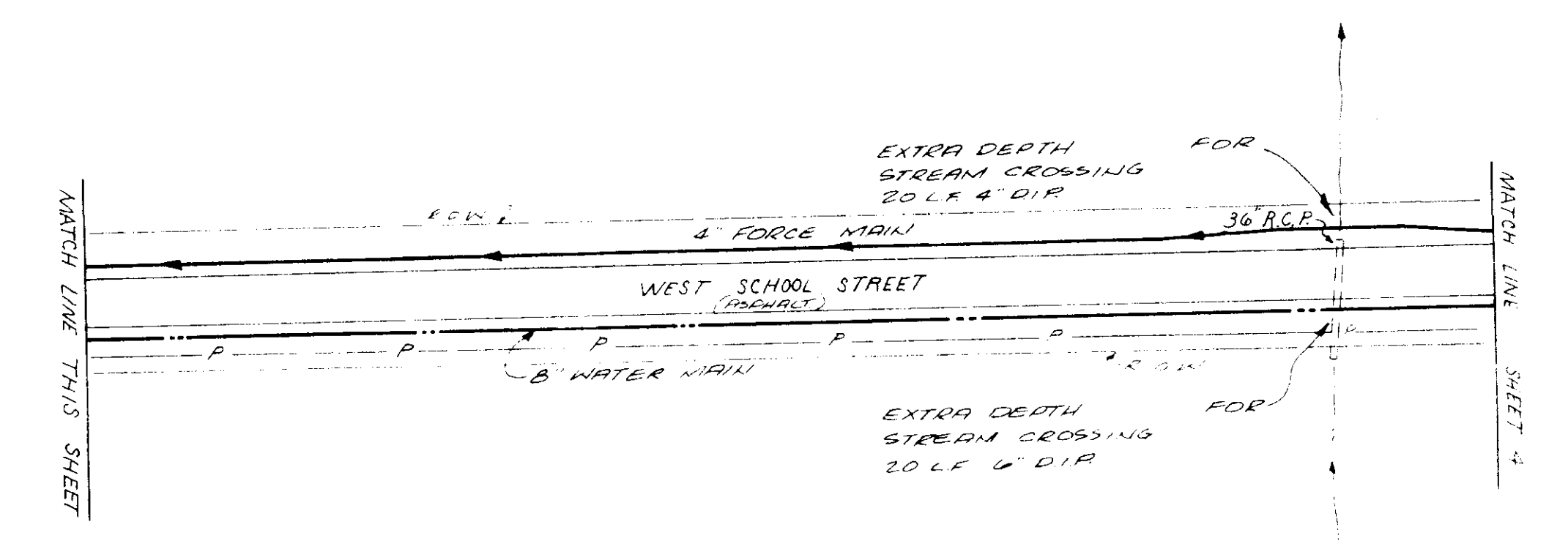
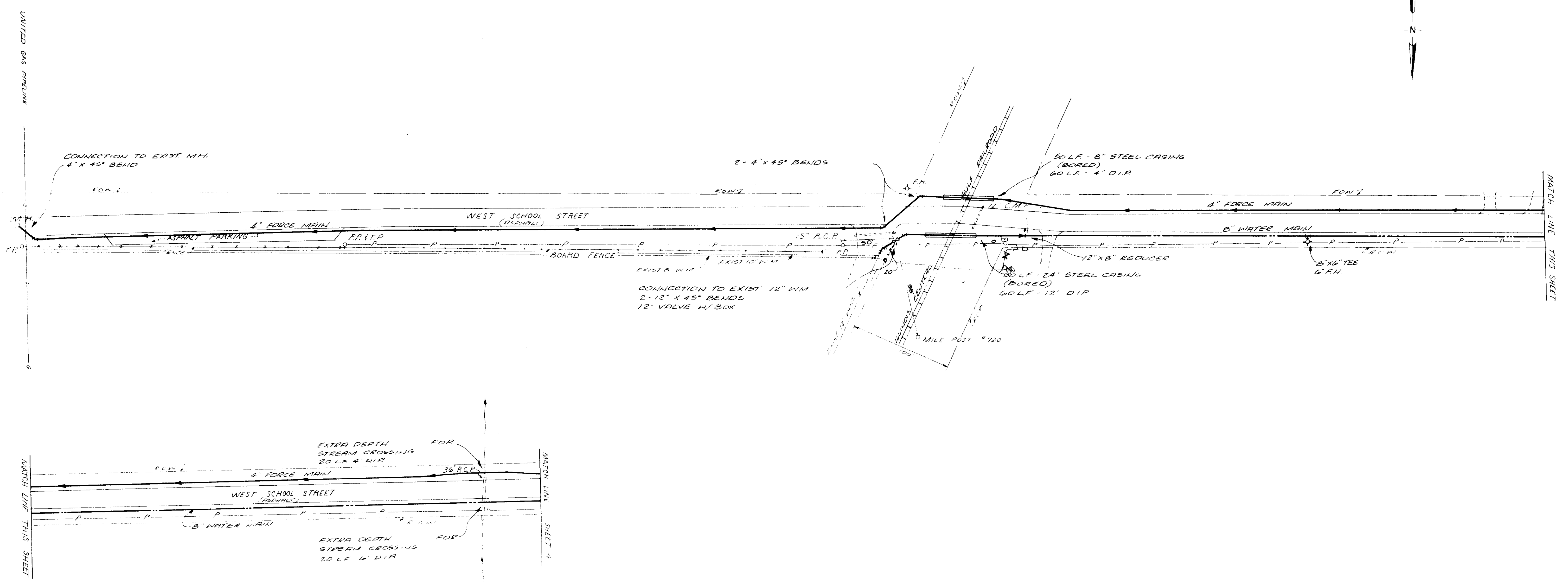
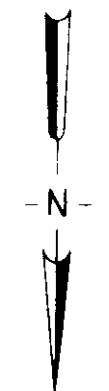
TYPICAL STREET SECTION



TYPICAL "V" BOTTOM DITCH
N. 75.

RECORD DRAWINGS
FEBRUARY 1988

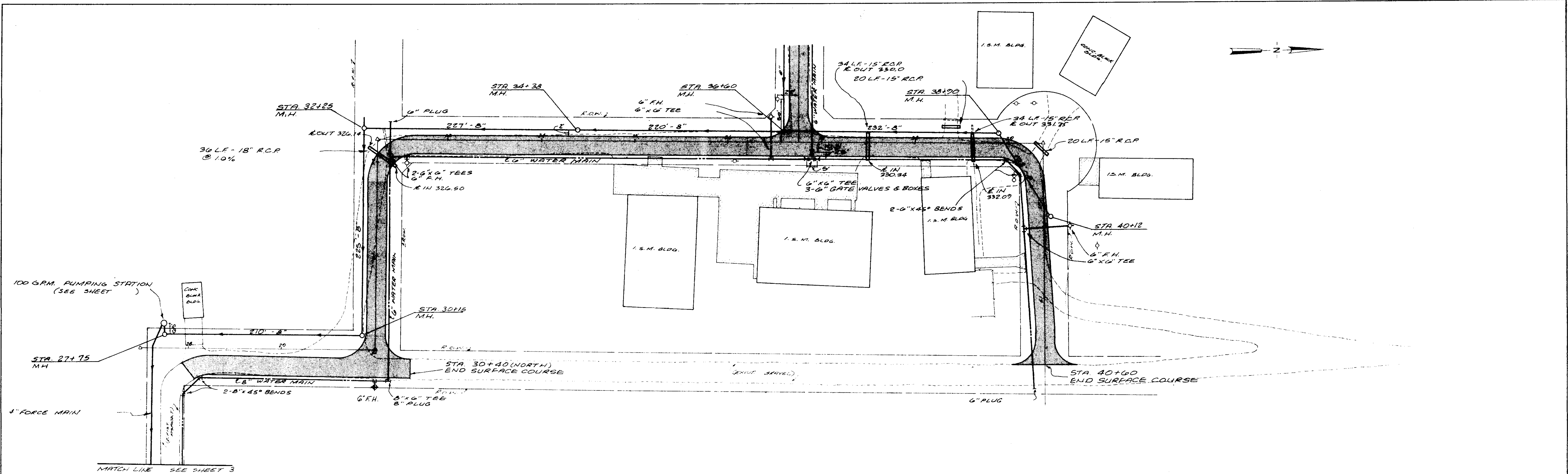
CITY OF RIDGELAND	
SPECIAL ASSESSMENT IMPROVEMF PROJECT NO. 4	
PROJECT LAYOUT	
WAGGONER ENGINEERS Consulting Engineers Jackson	
DRAWN BY: T.D.L.	DATE: 5-22-86
CHECKED BY: M.A.L.	SCALE: 1"=50'
APPROVED BY: J.A.W.	



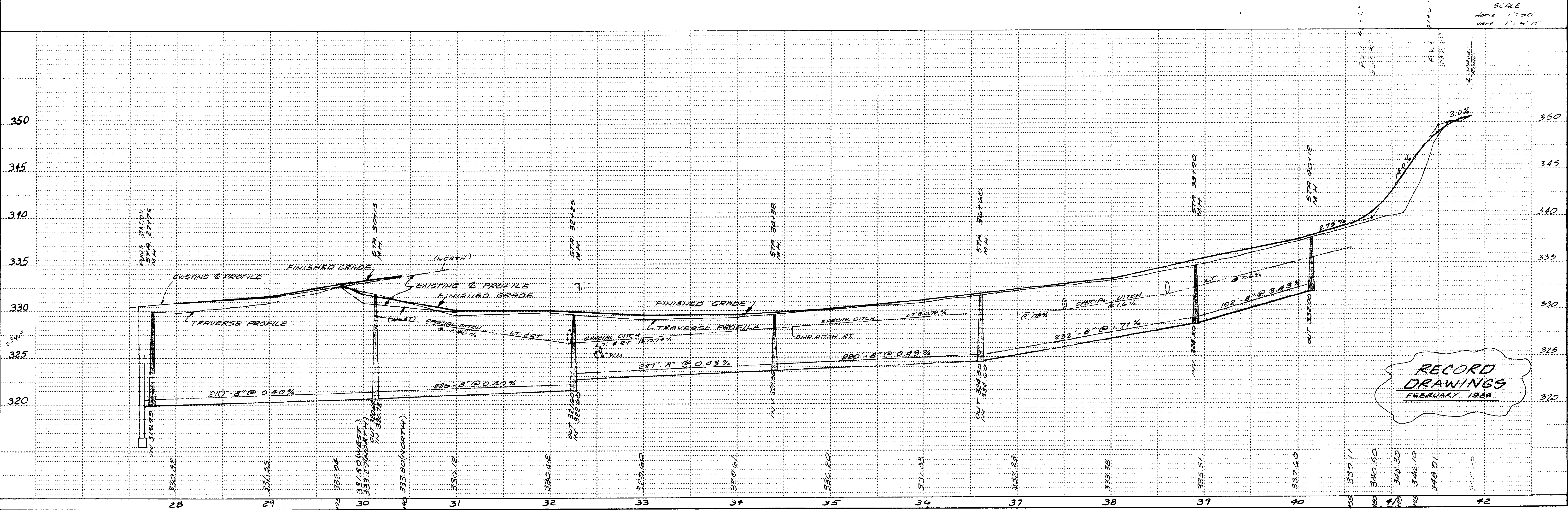
RECORD
DRAWINGS
FEBRUARY 1988

CITY OF RIDGELAND		
SPECIAL ASSESSMENT IMPROVEMENTS PROJECT NO. 4		
UTILITY IMPROVEMENTS		
WAGGONER ENGINEERING INC. Consulting Engineers Jackson/Brandon, Miss.		
DRAWN BY: T. D. L.	DATE: 4-15-86	SHEET NO. 3 OF 8
CHECKED BY: M. A. L.	SCALE: 1" = 50'	
APPROVED BY: J. A. W.		

DATE	
BY	
PLAN	
NO.	
NO. OF SHEETS	
NO. OF SHEETS CHECKED	
NO. OF SHEETS PLOTTED	
NO. OF SHEETS SUBMITTED	



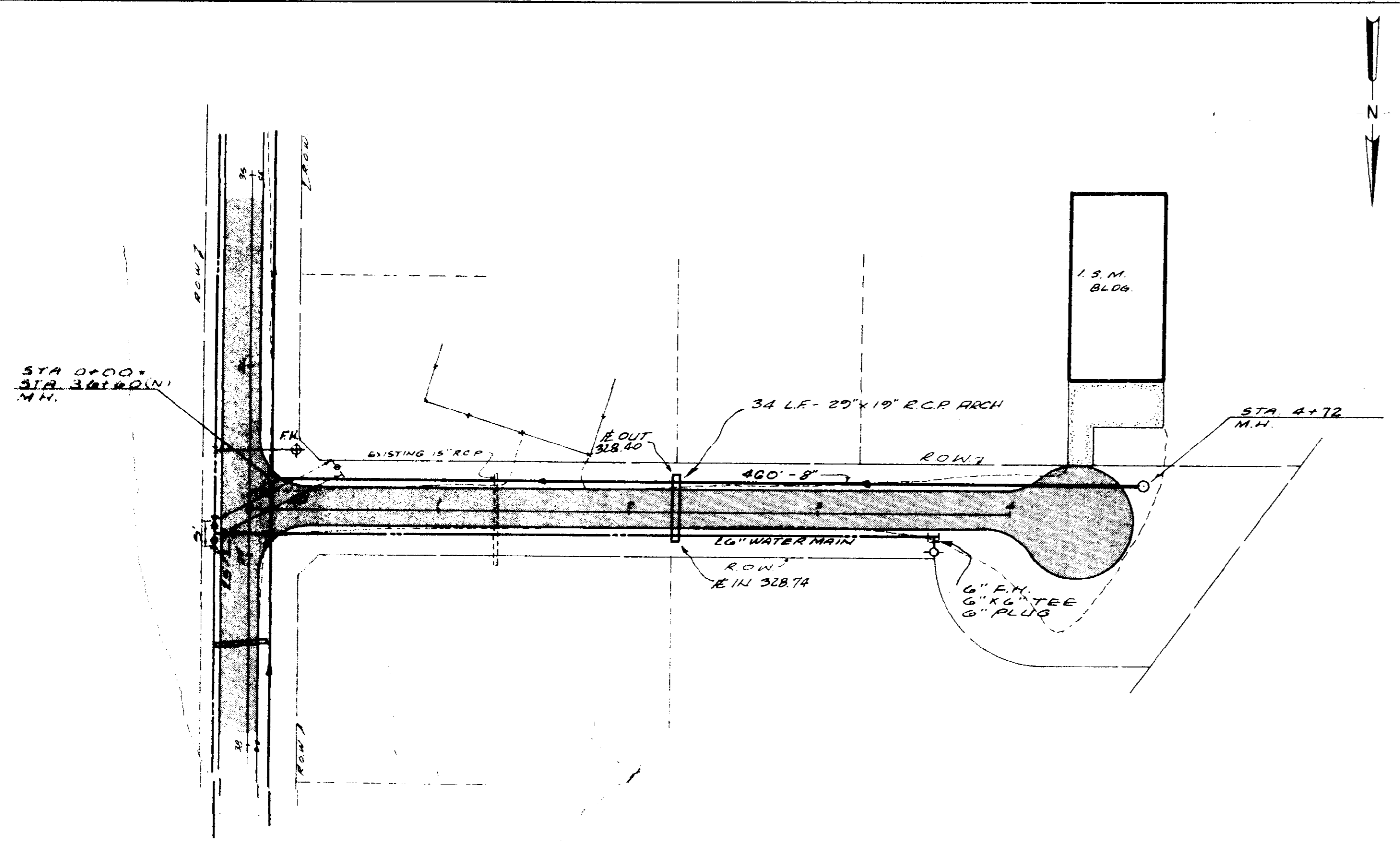
DATE	
BY	
PROFILE	
NO.	
NO. OF SHEETS	
NO. OF SHEETS CHECKED	
NO. OF SHEETS PLOTTED	
NO. OF SHEETS SUBMITTED	



RECORD DRAWINGS
FEBRUARY 1988

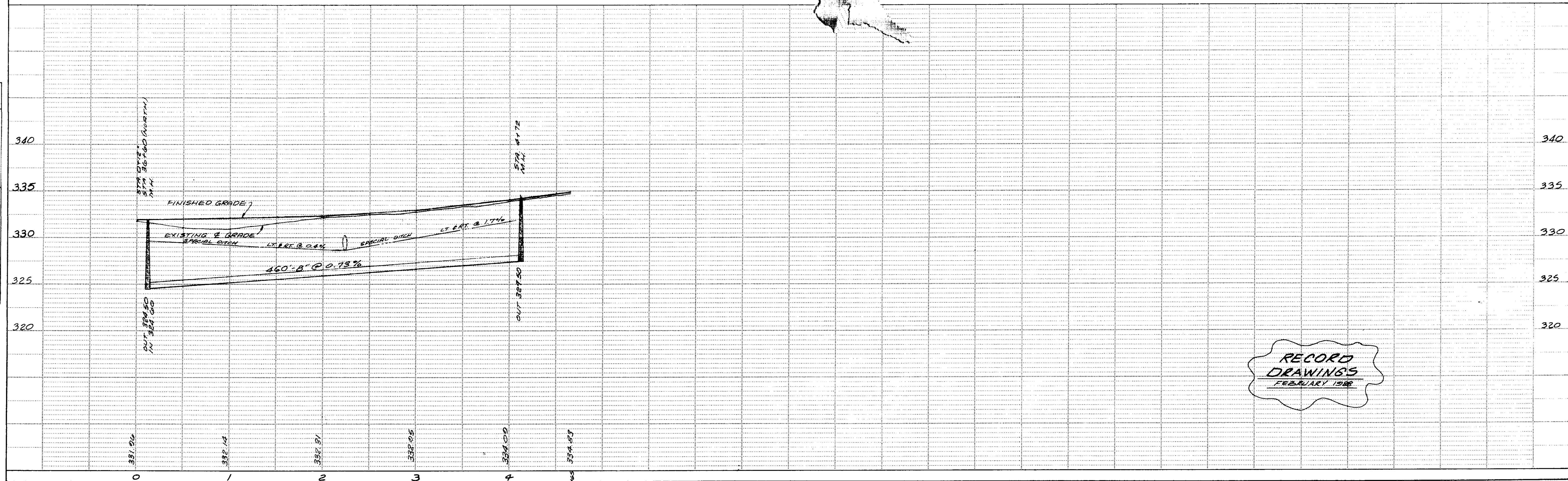
TUM 2232A
 (2-TUR-A) 4.01
 JAND 82

PLAN	DATE
BY	
CHECKED	
APPROVED	
NO. 1	



SCALE
 HORIZ 1"=50'
 VERT 1"=5'

PROFILE	DATE
BY	
CHECKED	
APPROVED	
NO. 1	



RECORD
 DRAWINGS
 FEBRUARY 1988