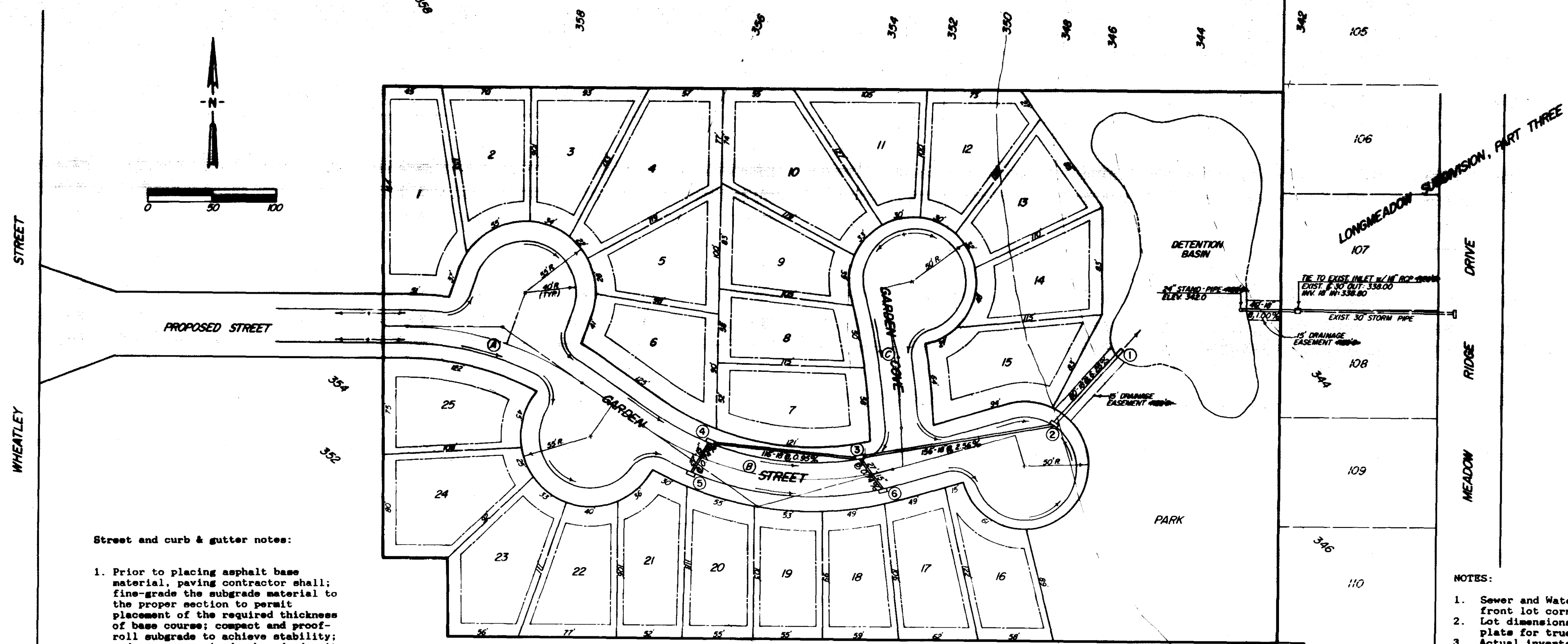


RM 263
 B.M. ELEVATION 341.43
 LAG BOLT & WASHER IN POWER
 POLE NORTH SIDE OF EAST FORD
 AVE. 8 1/2 WEST OF WHEATLEY ST.

CENTERLINE CURVE DATA

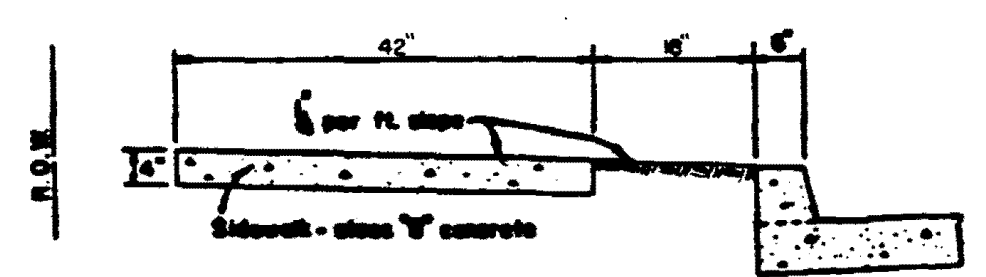
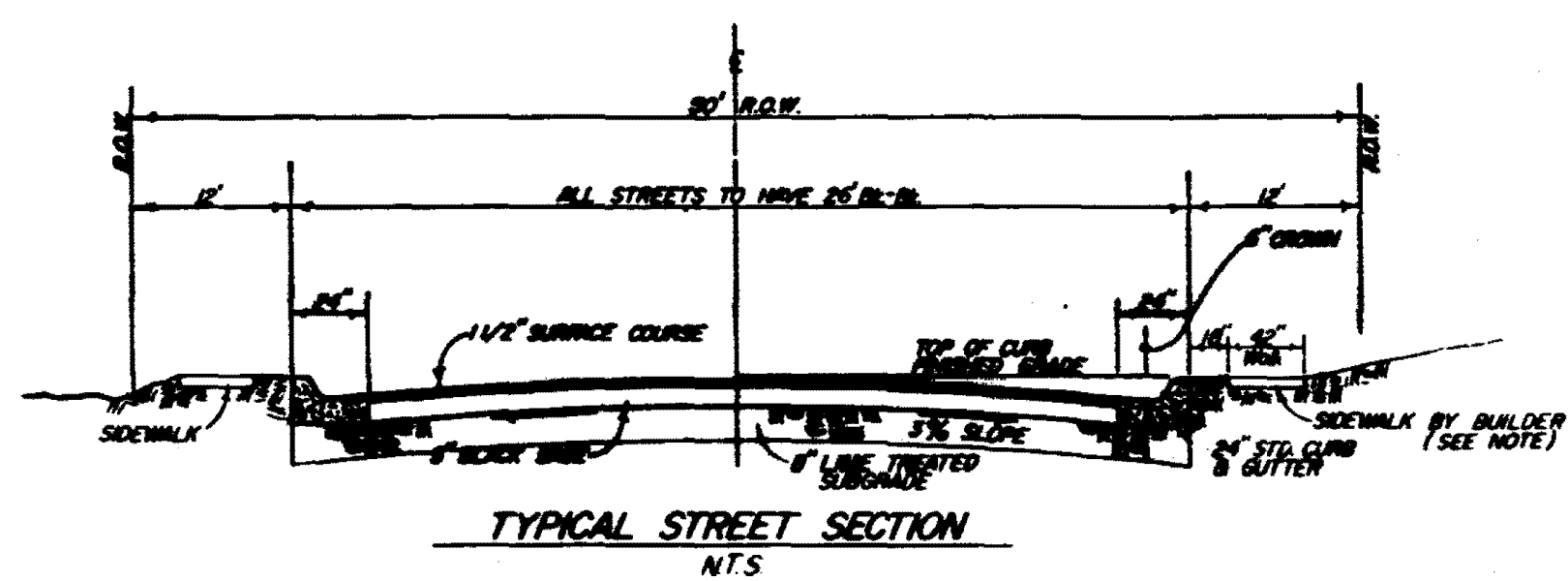
Ⓐ A=34° 17' 55" RT. D=23.574038' T=75.00' L=145.49' R=243.05' P.C.=3+09.57 P.I.=3+84.57 P.T.=4+55.08
 Ⓑ A=50° 17' 44" LT. D=24.452344' T=110.00' L=205.69' R=234.32' P.C.=5+15.06 P.I.=8+25.06 P.T.=7+20.75
 Ⓒ A=11° 29' 39" LT. D=10.484490' T=55.00' L=109.63' R=548.48' P.C.=0+30.72 P.I.=0+85.72 P.T.=1+40.35



Street and curb & gutter notes:

1. Prior to placing asphalt base material, paving contractor shall fine-grade the subgrade material to the proper section to permit placement of the required thickness of base course; compact and proof-roll subgrade to achieve stability; and ensure required subgrade density has been achieved and verified by soils testing laboratory.
2. Street undercutting and backfilling shall extend a minimum of 2 feet beyond back of curb.
3. Subgrade beneath curb and gutter shall be fine graded and compacted to achieve stability under pressure of the rear wheel loading of a motor grader moving slowly over the curb and gutter subgrade.
4. After forms and/or curb and gutter string lines have been set and before concrete is poured, contractor shall verify that all gutters drain to inlets.
5. Expansion joints in curb and gutter shall be 3/4" joint material placed at 30' (maximum) intervals.
6. Contraction joints in curb and gutter shall be scored at intervals not greater than 10 feet and spaced equally between expansion joints.
7. Concrete for curb and gutter shall be 3,000 psi minimum at 28 days.
8. Sidewalks shall be constructed by the builder of the original dwelling on each lot after all utility services are installed to the dwelling and the house site has been graded and shaped to its finished topography. Not a part of this project.

- NOTES:
1. Sewer and Water service location measurements are from front lot corners as shown.
 2. Lot dimensions shown are approximate. See recorded plat for true dimensions.
 3. Actual inverts and grades on streets, sanitary sewers and storm sewers may vary slightly from what is shown on the Final Plans of Completed Work.



STORM SEWER RECAPITULATION

- ① Inv. 18" Out: 340.00
- ② 5" Std. Inlet Req'd. D.A.=3.8Ac. Q=20.5cfs Inv. 18" In & Out: 345.00
- ③ 5" Std. Inlet Req'd. D.A.=2.9Ac. Q=15.7cfs Inv. 18" In & Out: 349.20
- ④ 5" Std. Inlet Req'd. D.A.=1.7Ac. Q=9.2cfs Inv. 18" In: 350.10 Inv. 15" In: 350.30
- ⑤ 5" Std. Inlet Req'd. D.A.=0.5Ac. Q=2.7cfs Inv. 15" Out: 350.50
- ⑥ 5" Std. Inlet Req'd. D.A.=0.4Ac. Q=2.2cfs Inv. 15" Out: 349.40

NOTE: CONTOURS ARE 2' INTERVAL.

FINAL PLANS OF COMPLETED WORK. JULY 30, 1997

DESIGNED:	SCALE: 1"=50'				
DRAWN: R. DALE	DWG. NO: 96-307				
APPROVED: T. BAILEY					
DATE: NOVEMBER, 1996					
NO.	DATE	NATURE OF REVISION	BY	CHKD.	APPD.

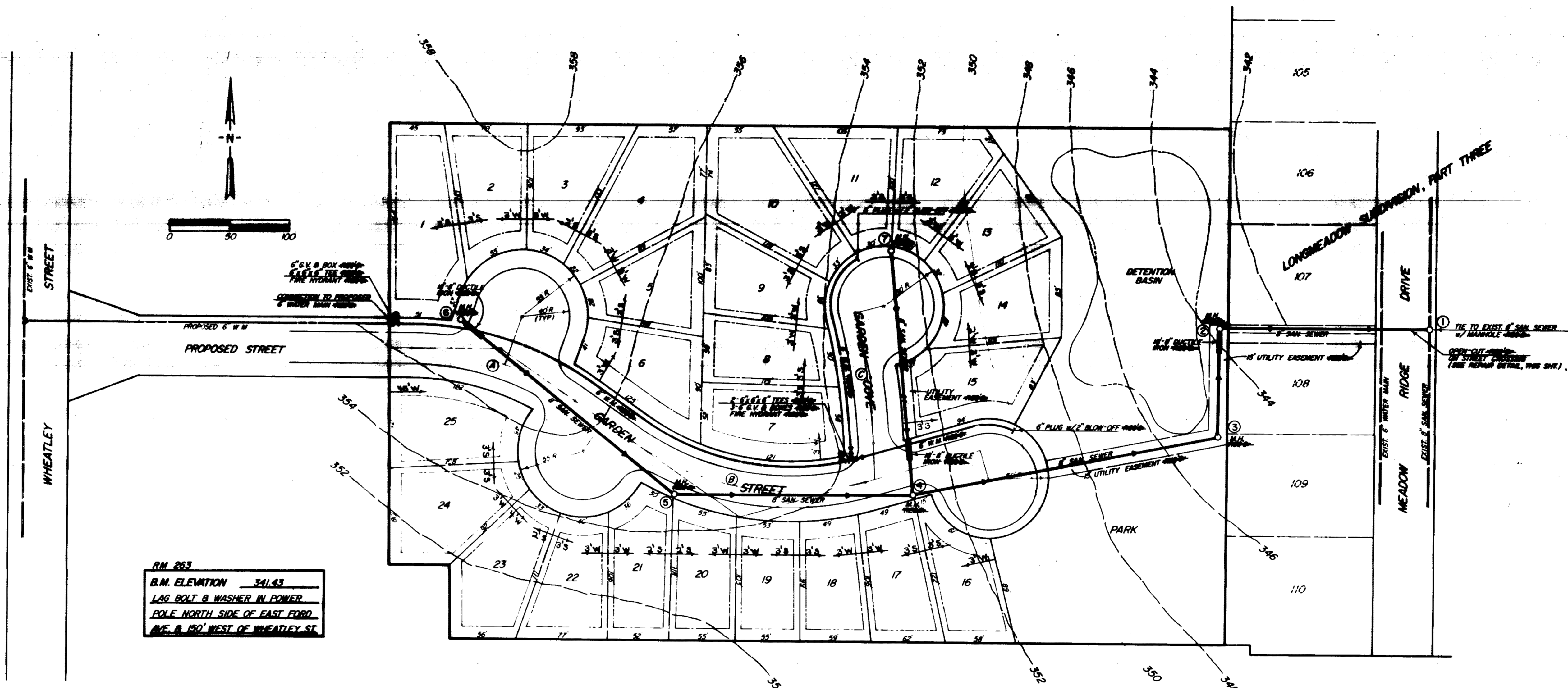
BAILEY ENGINEERING, INC.
 CIVIL ENGINEERING and LAND SURVEYING
 JACKSON, MISSISSIPPI

WHEATLEY GARDENS LOT LAYOUT & DRAINAGE

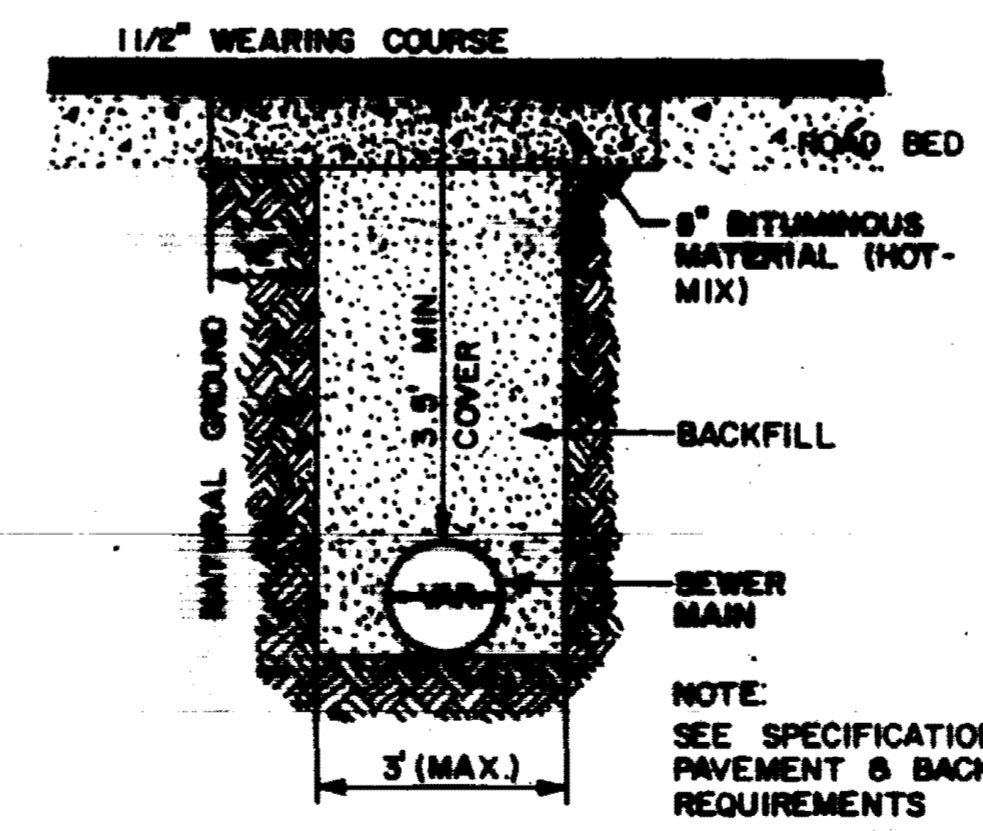
SHEET NO. 2

CENTERLINE CURVE DATA

Curve	Angle	Distance	Length	Radius	P.C.	P.I.	P.T.
A	34° 17' 55" RT.	D=23.574038'	L=145.49'	R=243.05'	P.C.=3+09.57	P.I.=3+84.57	P.T.=4+55.06
B	50° 17' 44" LT.	D=24.452344'	L=205.69'	R=234.32'	P.C.=5+15.06	P.I.=8+25.06	P.T.=7+20.75
C	11° 29' 39" LT.	D=10.484490'	L=55.00'	R=109.63'	P.C.=0+30.72	P.I.=0+85.72	P.T.=1+40.35



RM 263
 B.M. ELEVATION 341.43
 LAG BOLT & WASHER IN POWER
 POLE NORTH SIDE OF EAST FORD
 AVE. & 150' WEST OF WHEATLEY ST.



STREET REPAIR DETAIL
 NO SCALE

NOTE: CONTOURS ARE 2' INTERVAL.

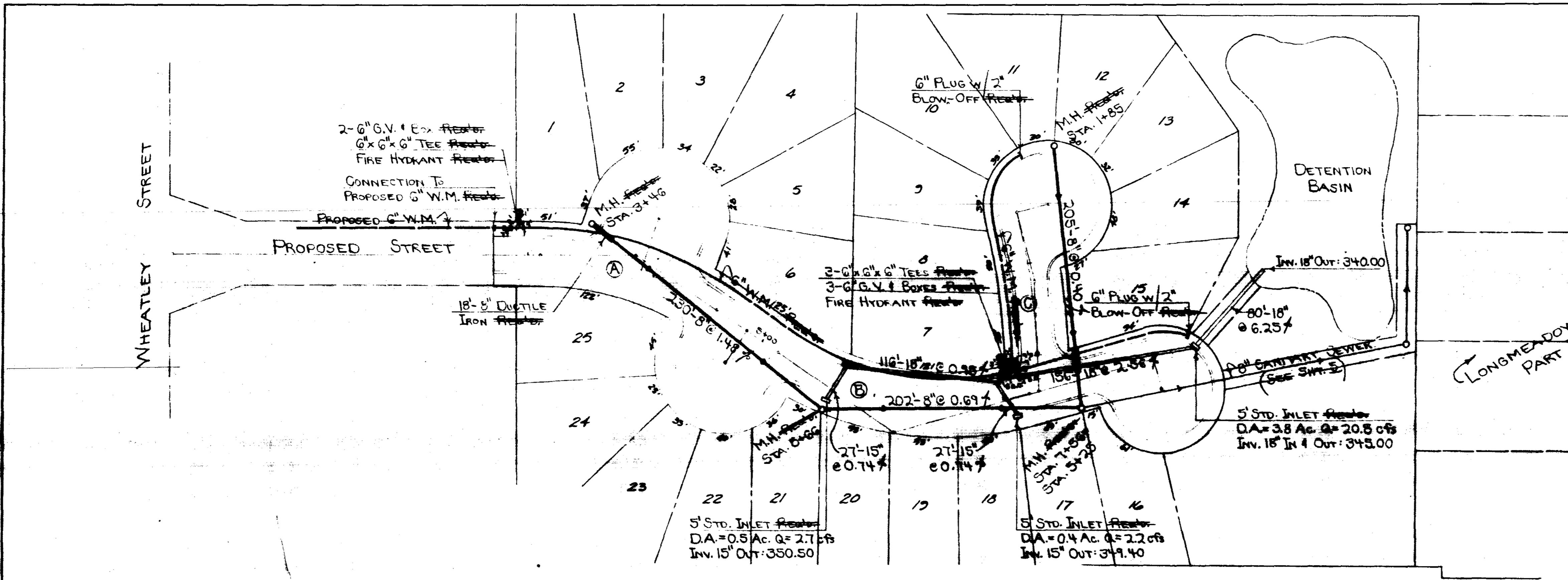
FINAL PLANS OF
 COMPLETED WORK,
 JULY 30, 1997

DESIGNED:	SCALE: 1"=50'				
DRAWN: R. DALE	CHKD. NO: 96-307				
APPROVED: T. BAILEY					
DATE: NOVEMBER, 1996					
REV. NO.	DATE	NATURE OF REVISION	BY	CHKD.	APPRD.

BAILEY ENGINEERING, INC.
 CIVIL ENGINEERING and LAND SURVEYING
 JACKSON, MISSISSIPPI

WHEATLEY GARDENS
 WATER & SEWER LAYOUT

SHEET NO. **3**



CENTERLINE CURVE DATA

Curve	Direction	Diameter	Length	Radius	P.C.	P.I.	P.T.
A	34° 17' 55" RT.	23.574038'	75.00'	145.48'	243.05'	3409.57'	3455.06'
B	50° 17' 44" LT.	24.452344'	110.00'	205.88'	294.32'	515.08'	720.75'
C	11° 29' 39" LT.	10.484490'	55.00'	108.83'	30.72'	85.72'	140.35'

PLAN- GARDEN STREET & GARDEN COVE
 SCALE: 1" = 50' HORIZ.
 1" = 5' VERT.

FINAL PLANS OF
 COMPLETED WORK.
 JULY 30, 1997

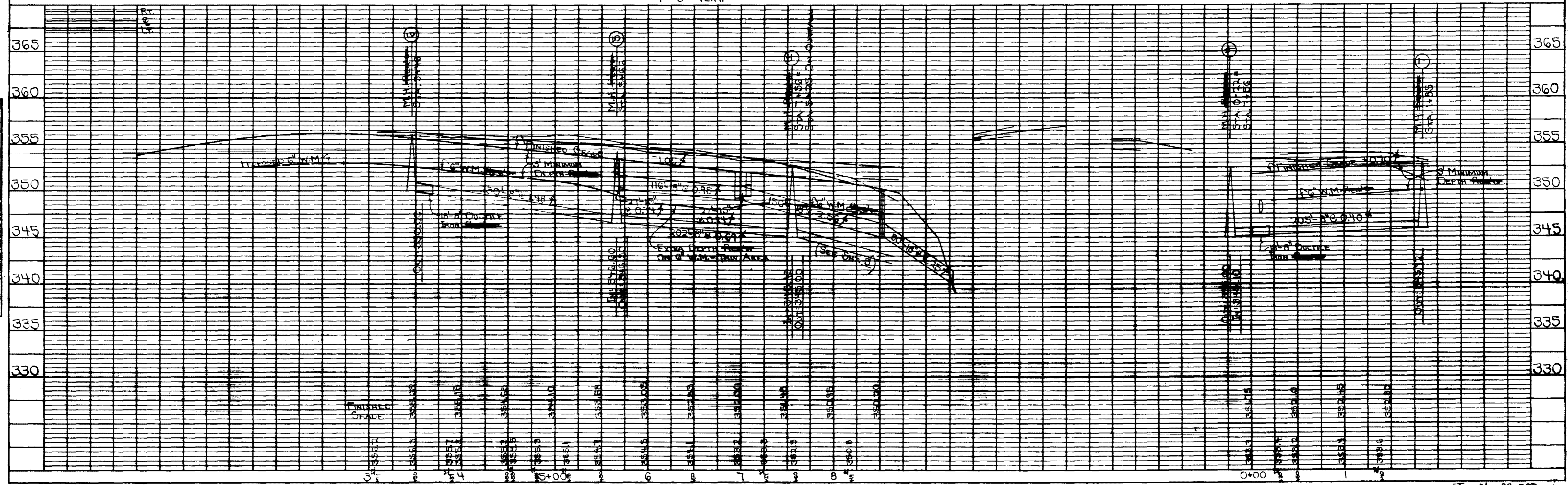
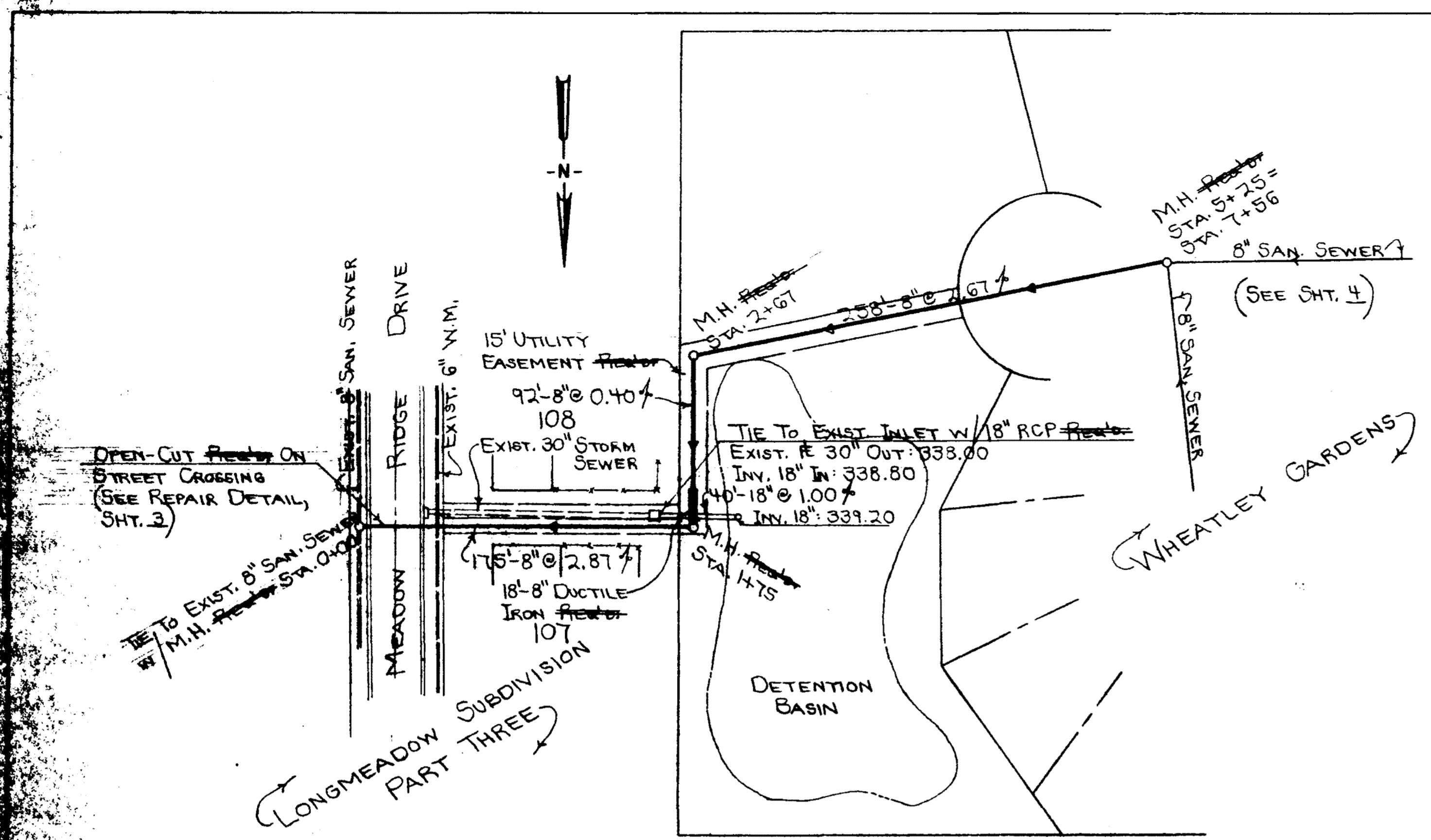
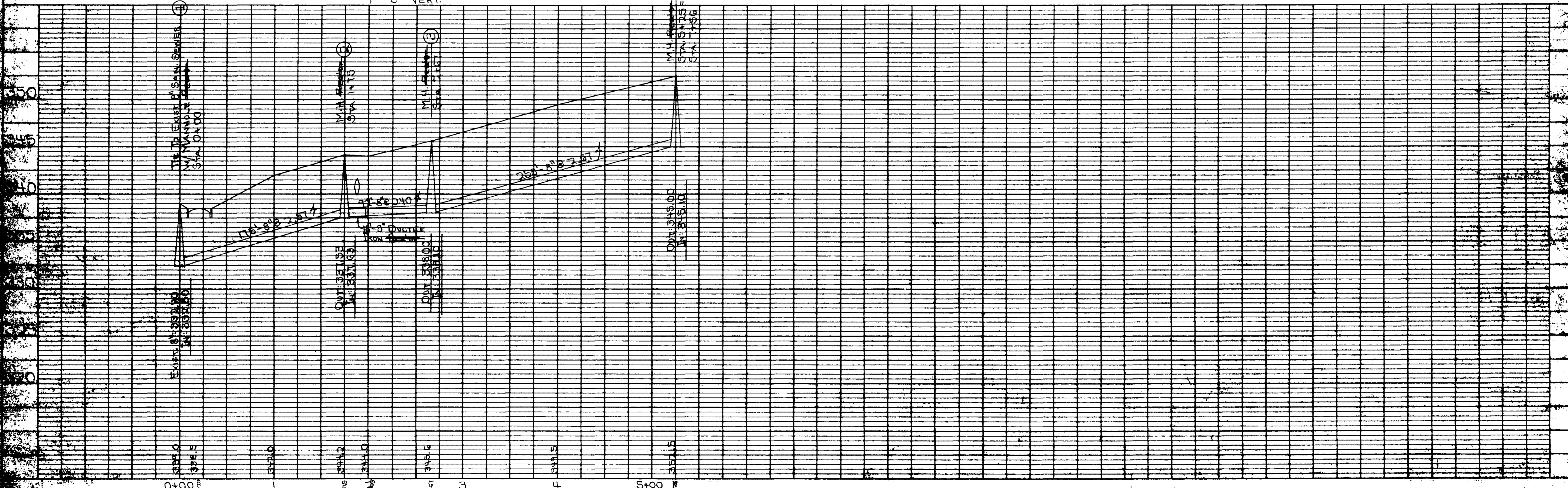


PLATE 1-SINGLE PLAN AND PROFILE



PLAN-PROPOSED 8" SANITARY SEWER SERVING WHEATLEY GARDENS

SCALE: 1" = 50' HORIZ.
1" = 5' VERT.



FINAL PLANS OF
COMPLETED WORK.
JULY 30, 1997