

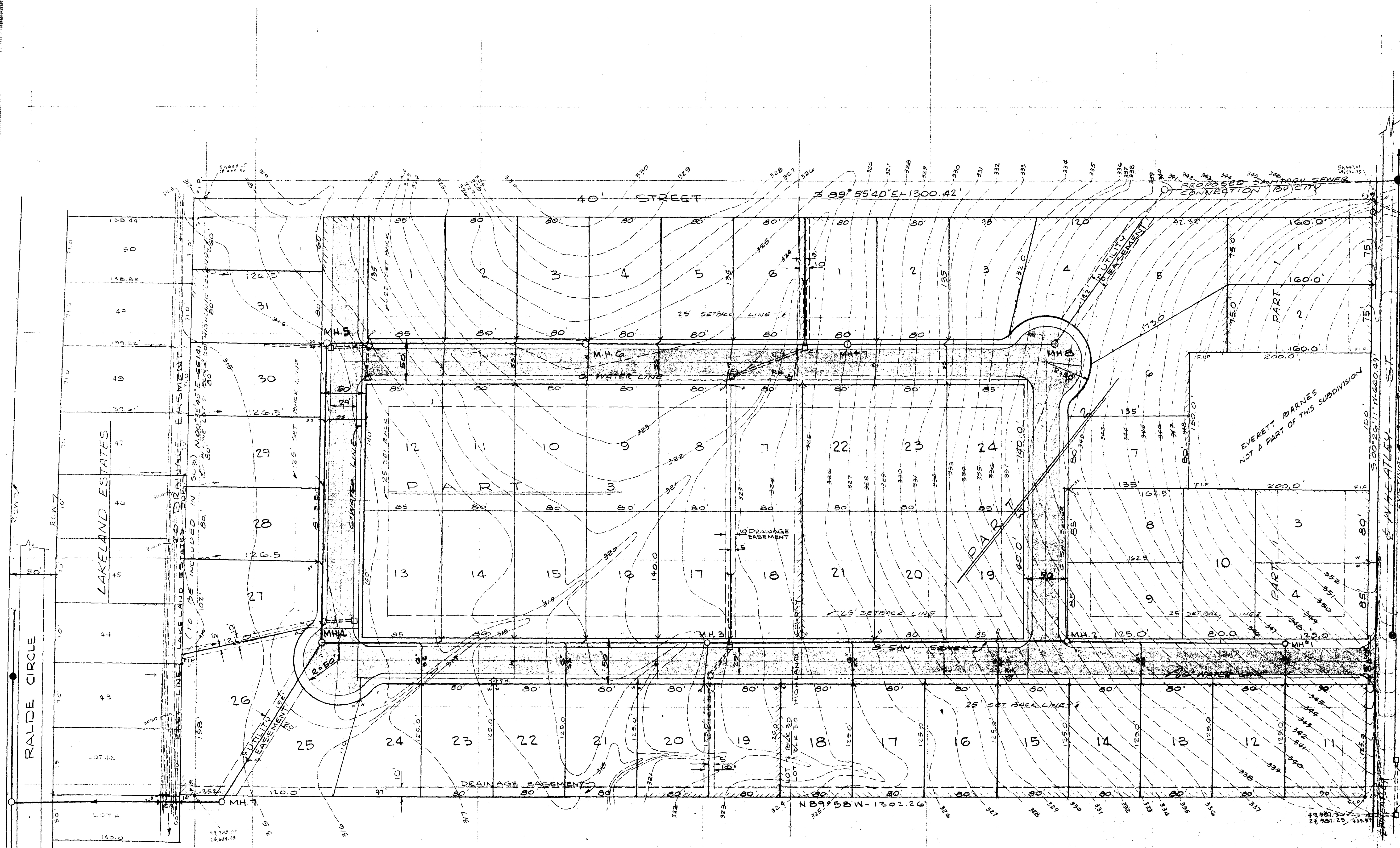
WHEATLEY PLACE

CITY OF RIDGELAND ,

MISSISSIPPI

PEN-SAL, INC. - 5731 OLD CANTON ROAD
JOHN SALTER, PRES.
J.P. PENNINGTON, SEC.

PWP-05009



TOP 351.82
M.H. INV. 344.36
EXISTING

TRUE
SCALE: 1"=50'
CONTOUR INTERVAL 1'

TOP 349.33
M.H. INV. 340.44
EXISTING

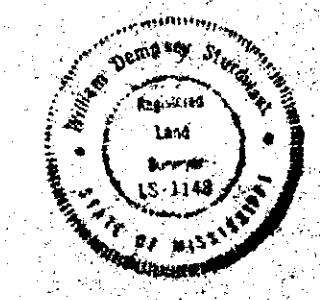
PART 1 4 LOTS
PART 2 24 LOTS
PART 3 31 LOTS
TOTAL 59 LOTS

WHEATLEY PLACE

OWNER PEN-SAL, INC. - 5731 OLD CANTON ROAD
JOHN SALTER, PRES.
J.P. PENNINGTON, SEC.

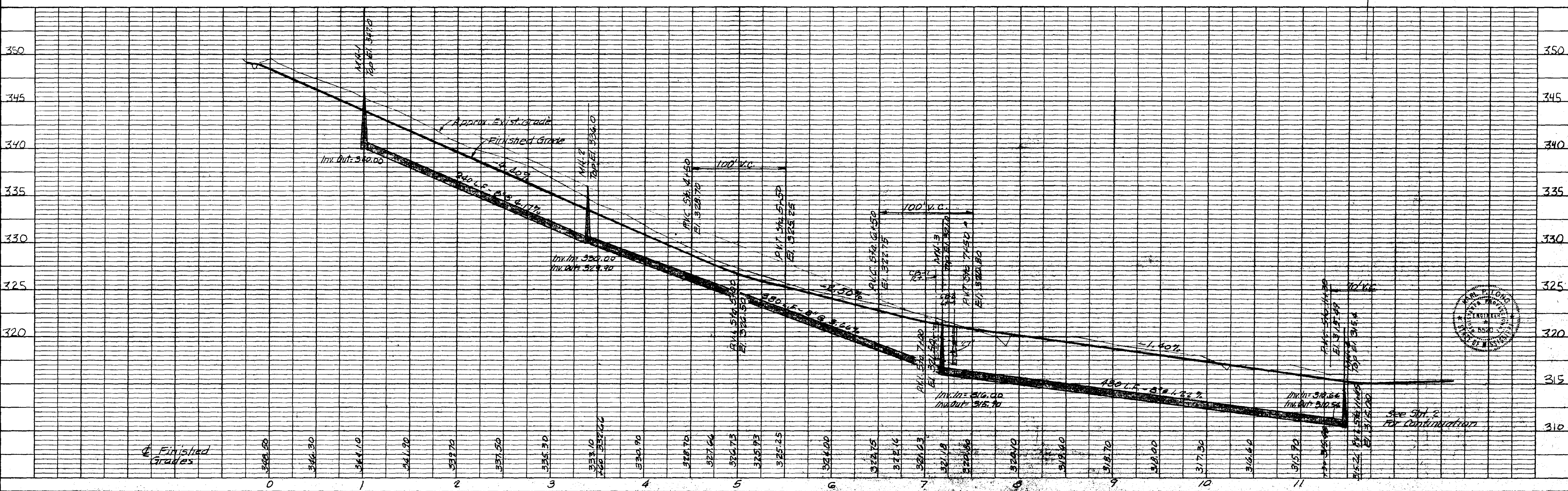
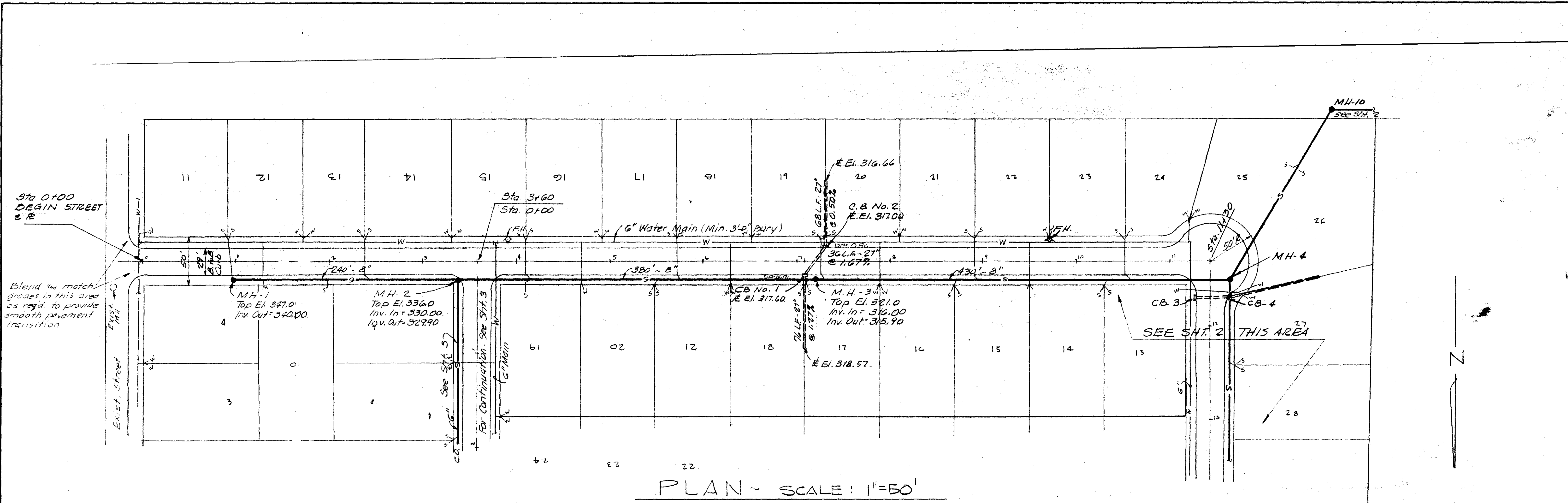
BUILDING SET BACK
(MIN. YARD)
FRONT 25'
SIDE 7.5'
REAR 25'

MIN. LOT 10,000 SQ. FT.
DATE OCT. 15, 1977

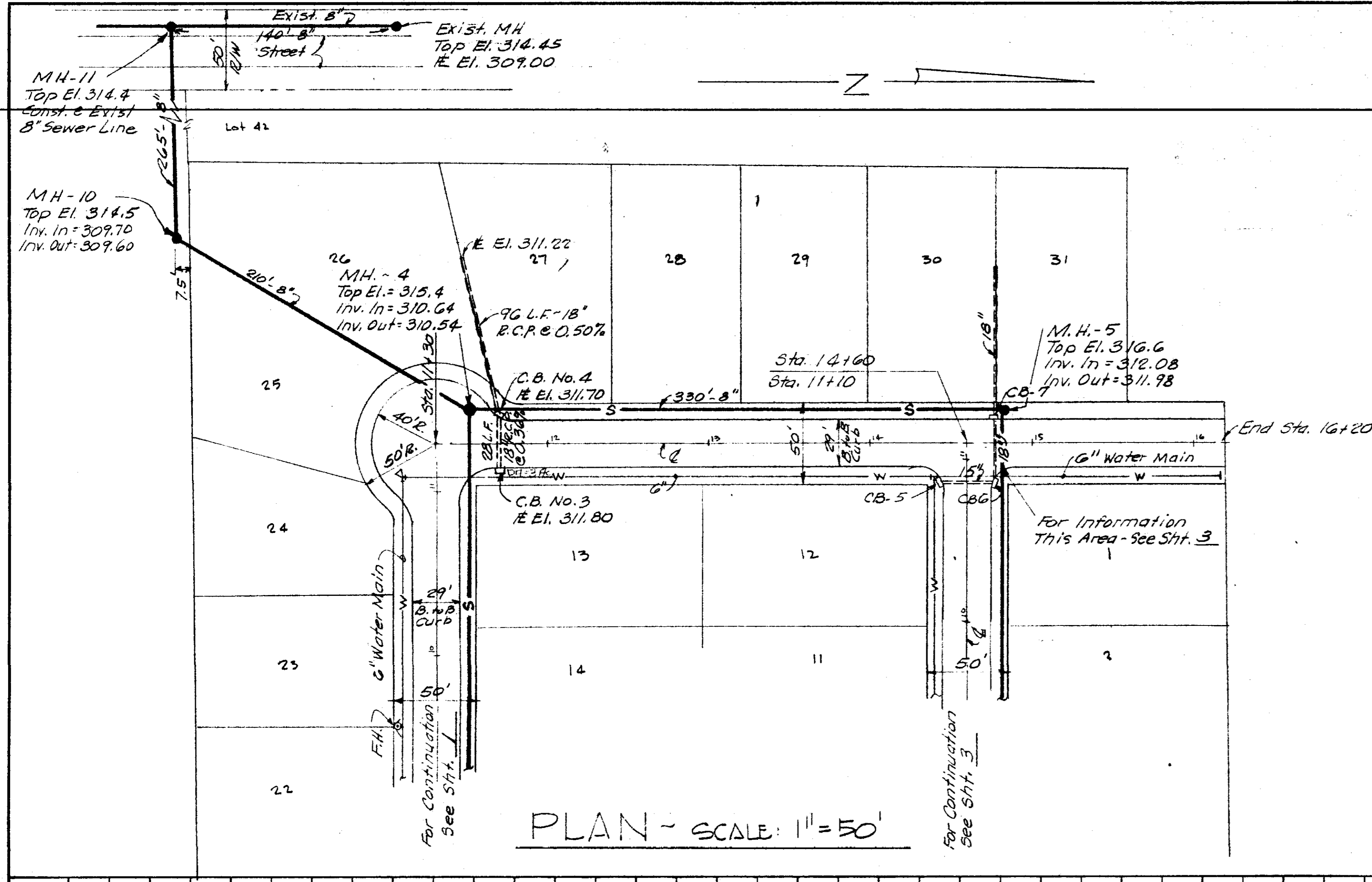


DATE	
BY	
REVISION	
NO.	
DATE	
BY	
REVISION	
NO.	
DATE	
BY	
REVISION	
NO.	
DATE	
BY	
REVISION	
NO.	

DATE	
BY	
REVISION	
NO.	
DATE	
BY	
REVISION	
NO.	
DATE	
BY	
REVISION	
NO.	



DATE	
BY	
REVISION	
NO.	
PLAN	
NOTE BOOK	
NO.	



DATE	
BY	
REVISION	
NO.	
PROFILE	
NOTE BOOK	
NO.	



NOTE:
 Construct MH-11 in
 existing 8" sewer.
 Verify location and
 elevations.

