

# SCHOOL STREET & WHEATLEY STREET

## WATER LINE RELOCATION

### CITY OF RIDGELAND, MISSISSIPPI

#### EPA GRANT NUMBER XP-95416710-0

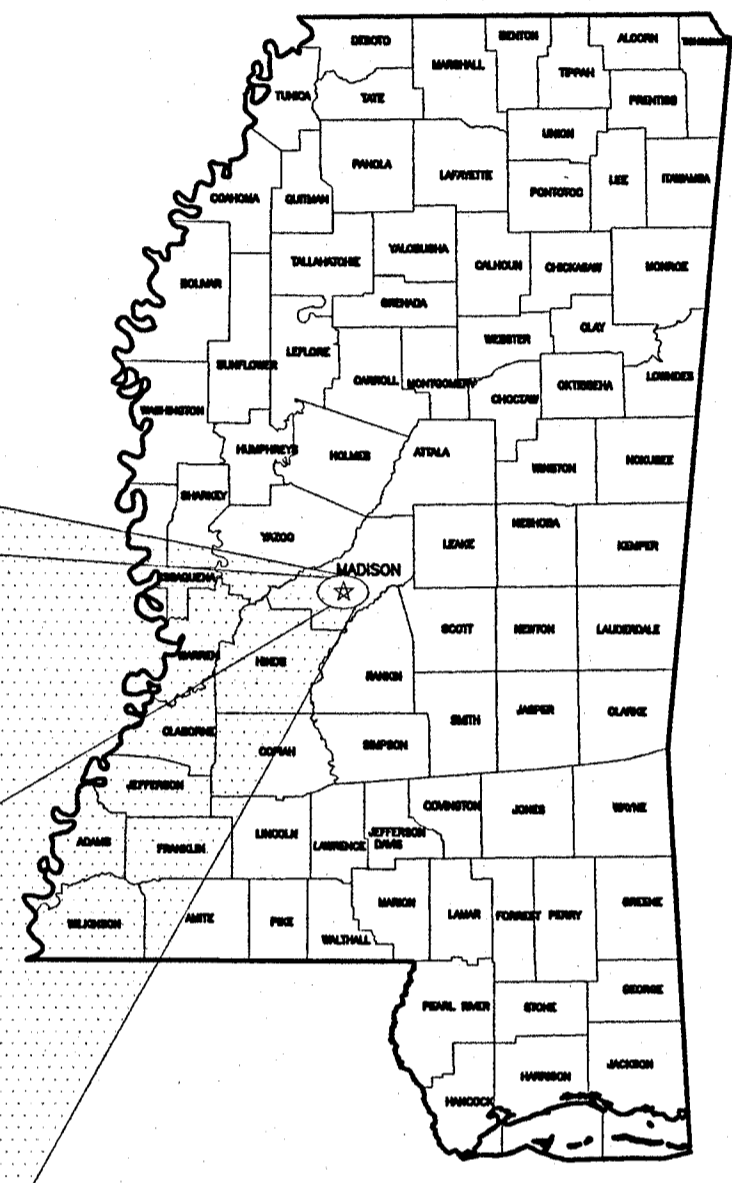
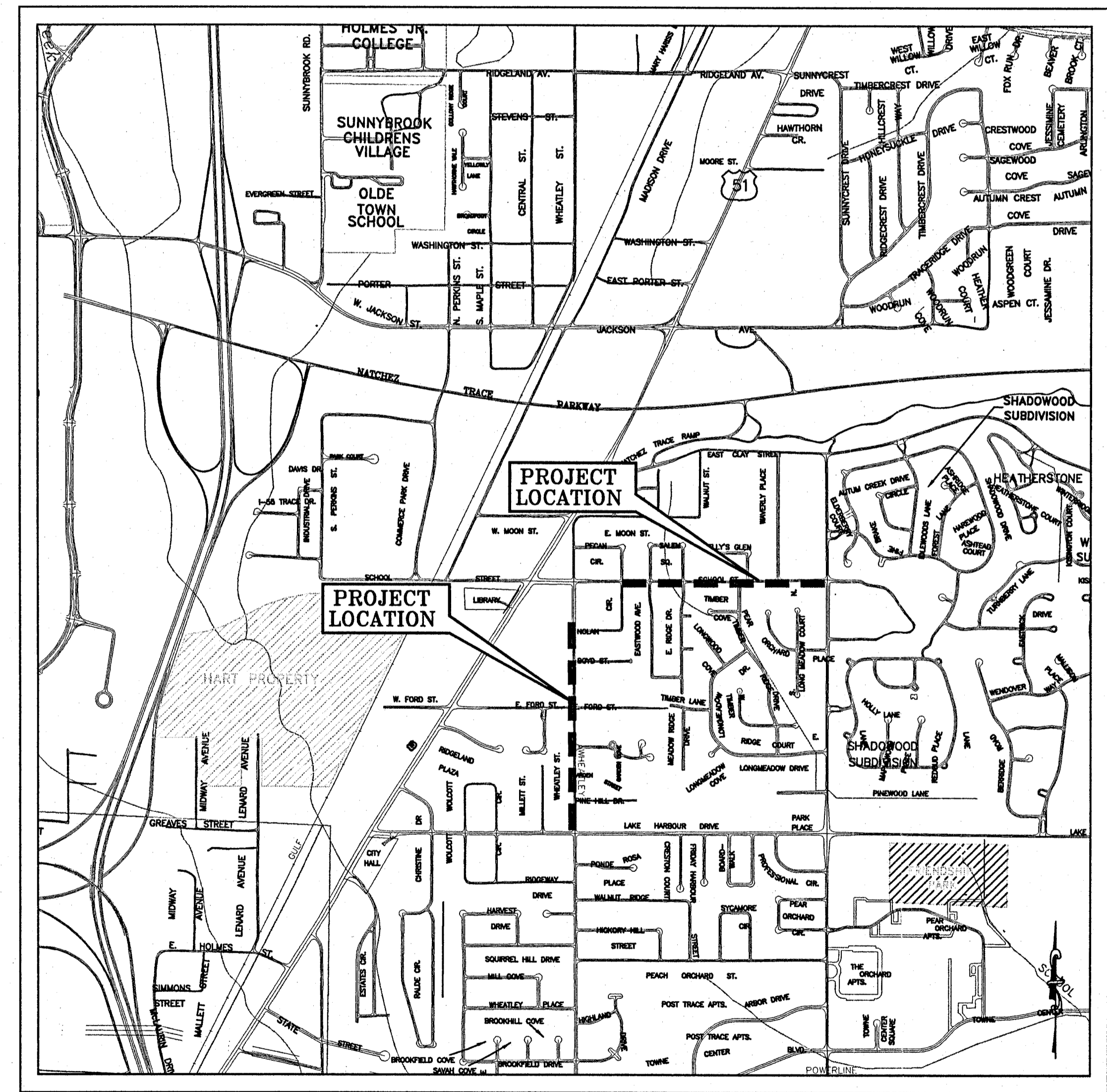


Jackson, MS • Hernando, MS • Gulfport, MS  
 Ruston, LA • New Orleans, LA  
 www.waggonereng.com  
 1-800-661-3733

**SCHOOL STREET & WHEATLEY STREET**  
**WATER LINE RELOCATION**  
**CITY OF RIDGELAND, MISSISSIPPI**  
**EPA GRANT # XP-95416710-0**

PWD-01949  
 Cabinet 7 Drawer 1

INDEX TO DRAWINGS	
SHEET NO.	TITLE
G1.0	COVER
G1.1	SCHOOL STREET VICINITY MAP & GENERAL NOTES
G1.2	WHEATLEY STREET VICINITY MAP
PP1.1	SCHOOL STREET PLAN VIEW
PP1.2	SCHOOL STREET PLAN VIEW
PP1.3	SCHOOL STREET PLAN VIEW
PP1.4	SCHOOL STREET PLAN VIEW
PP1.5	SCHOOL STREET PLAN VIEW
PP2.1	WHEATLEY STREET PLAN VIEW
PP2.2	WHEATLEY STREET PLAN VIEW
PP2.3	WHEATLEY STREET PLAN VIEW
SD1.1	STANDARD WATER DETAILS
SD1.2	STANDARD WATER DETAILS



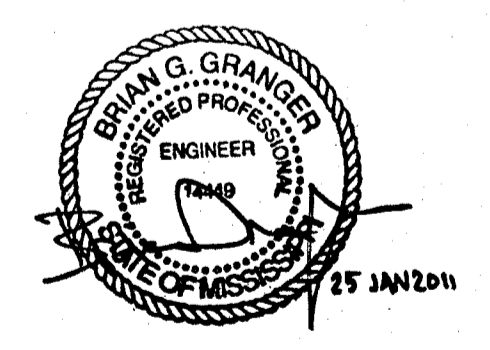
VICINITY MAP  
 JANUARY 2011  
 WEI # W09-083

MAYOR  
 GENE MCGEE

BOARD OF ALDERMAN  
 GERALD STEEN  
 KEN HEARD  
 CHUCK GAUTIER  
 KEVIN HOLDER  
 BRIAN RAMSEY  
 SCOTT JONES  
 WESLEY HAMLIN

PUBLIC WORKS DIRECTOR  
 MIKE MCCOLLUM

DRAWING REVISIONS		
NO.	REMARKS	DATE

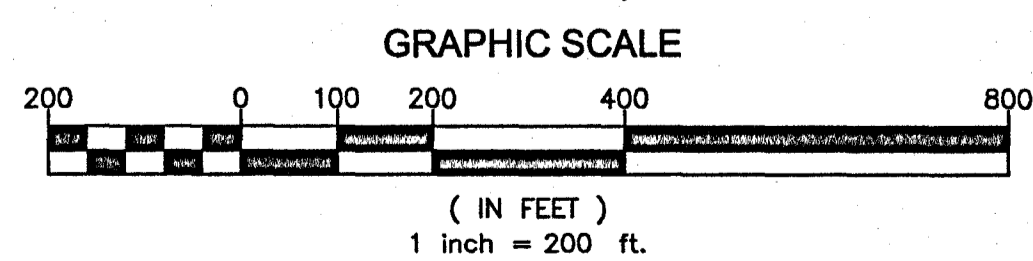
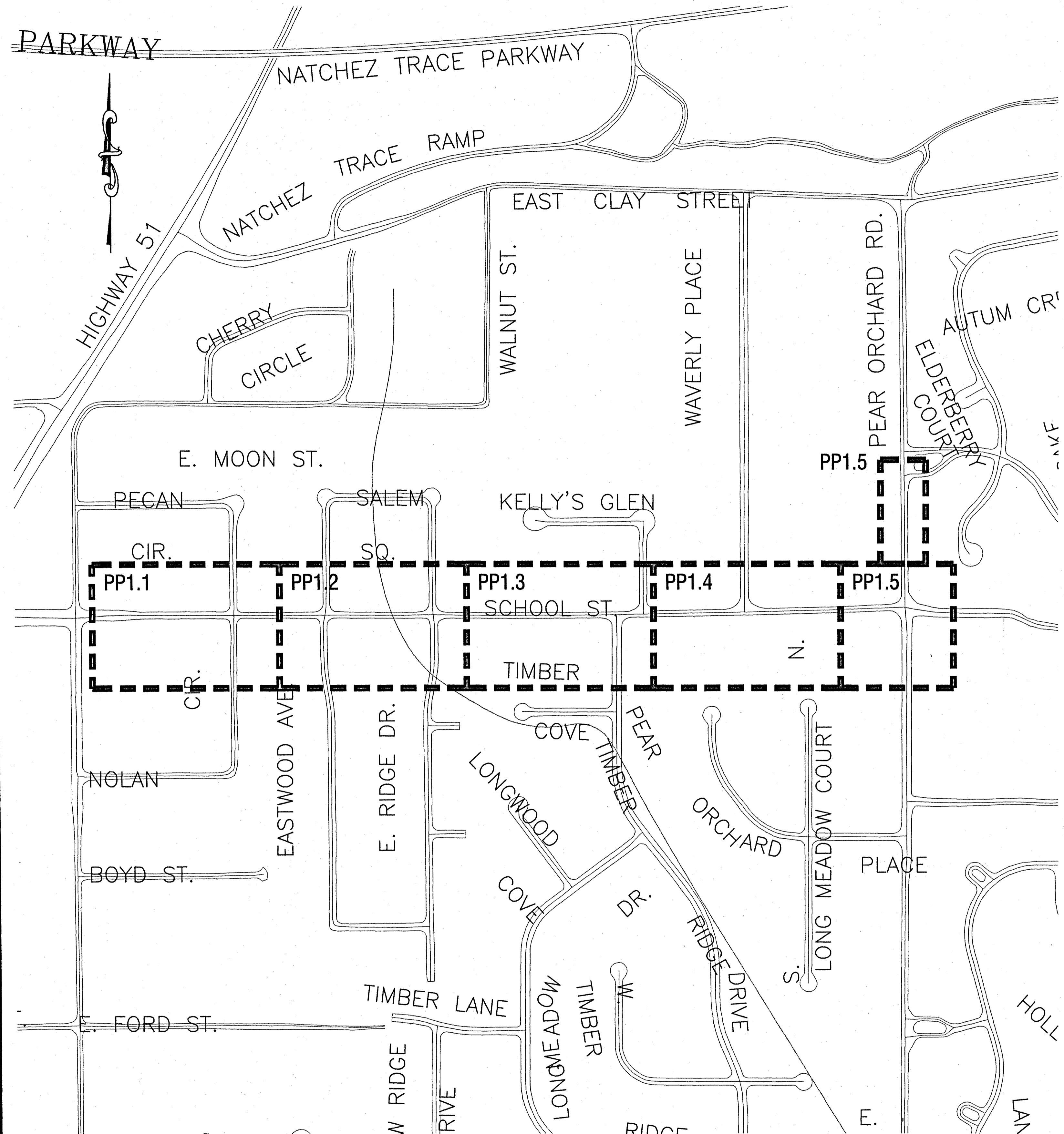


DRAWN BY: TFM SCALE: N.T.S.  
 DESIGNED BY: BOG DATE: 01/20/11  
 CHECKED BY: CTX PROJECT: W09-083  
 DRAWING TITLE:

COVER  
 SHEET NUMBER  
 G1.0

PWP-01949

P:\Ridgeland\_City of W09083 - Ridgeland School 51\Drawings\W09083-SCHOOL-ST-COVER.dwg, cover, 1/24/2011 11:29:34 AM, \\print\cbe TD9500



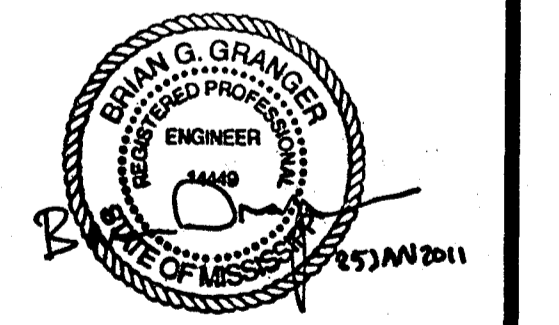
GENERAL CONSTRUCTION NOTES

1. ANY EXISTING UTILITY LOCATIONS SHOWN ON PLANS ARE APPROXIMATE ONLY. THE CONTRACTOR SHALL COORDINATE THE LOCATION (HORIZONTAL AND VERTICAL) OF ANY EXISTING UTILITIES (POWER, TELEPHONE, GAS, WATER, SEWER, ETC.) WITH THE APPROPRIATE UTILITY COMPANY BEFORE CONSTRUCTION BEGINS.
2. ANY UTILITY LINE OR SERVICE LINE ENCOUNTERED DURING CONSTRUCTION, WHETHER SHOWN ON PLANS OR NOT, SHALL BE PROTECTED BY THE CONTRACTOR AND ANY REPAIRS NECESSARY DUE TO DAMAGE TO SAME BY THE CONTRACTOR SHALL BE AT NO ADDITIONAL COST TO THE OWNER.
3. THE CONTRACTOR SHALL BE RESPONSIBLE FOR VERIFYING HORIZONTAL AND VERTICAL CLEARANCES ON ANY UTILITY SERVICE CROSSINGS REQUIRED BEFORE INSTALLATION.
4. THE CONTRACTOR SHALL SOLID SOD ALL AREAS WHERE THE EXISTING VEGETATION WAS REMOVED OR DISTURBED DURING CONSTRUCTION AND NOT REQUIRED TO BE PAVED OR GRAVELED.
5. HORIZONTAL AND VERTICAL CONTROL DATA WILL BE PROVIDED TO THE CONTRACTOR BY THE ENGINEER PRIOR TO START OF CONSTRUCTION.
6. ANY TBM'S WHICH ARE OR MAY BE IN CONFLICT WITH CONSTRUCTION ACTIVITIES SHALL BE RELOCATED BY ENGINEER PRIOR TO COMMENCEMENT OF CONSTRUCTION IN THE IMMEDIATE AREA.
7. ALL DETAILED CONSTRUCTION STAKING WILL BE BY CONTRACTOR AS AN ABSORBED COST ITEM.
8. THE CONTRACTOR SHALL BE RESPONSIBLE FOR COMPLETING ALL SAMPLING AND TESTING OF MATERIALS INCORPORATED INTO THE PROJECT AND FOR SUBMISSION OF SAME TO ENGINEER FOR REVIEW. PRIOR USE TEST RESULTS, MANUFACTURER'S CERTIFICATES, OR PROPOSED MIX DESIGNS SHALL BE SUBMITTED TO THE ENGINEER FOR REVIEW BEFORE INCORPORATION INTO PROJECT. THIS SHALL INCLUDE BACKFILL, CONCRETE, STEEL, PAINT, PIPING, FENCING MATERIALS, AGGREGATES, SEED AND OTHER ITEMS AS SPECIFIED BY THE ENGINEER. TESTING SHALL BE AN ABSORBED COST ITEM.
9. ALL TESTING CERTIFICATIONS SHALL STATE THAT THE SUBJECT MATERIAL MEETS THE SPECIFIED QUALITY, GRADE, PURITY, CLASS OR WEIGHT, OR THAT THE SUBJECT MATERIAL MEETS OR EXCEEDS THE REQUIREMENT OF THE APPLICABLE ASTM, AWWA, AASHTO, MSHD OR OTHER STANDARDS. CERTIFICATIONS SHALL BE SUBMITTED TO THE ENGINEER PRIOR TO INCORPORATION OF THE SUBJECT MATERIAL INTO THE PROJECT.
10. THE CONTRACTOR SHALL REPAIR OR REPLACE FENCES, DRIVEWAYS, SIDEWALKS, YARD SURFACES, CURB AND GUTTER SECTIONS, OR OTHER SURFACES AND/OR STRUCTURES WHICH ARE DAMAGED, REMOVED OR OTHERWISE, DISTURBED DURING CONSTRUCTION. REPAIRS SHALL BE TO ORIGINAL CONDITION OR BETTER AND SHALL BE MADE BY USING THE TYPES OF MATERIAL USED DURING CONSTRUCTION AND TO THE COMPLETE SATISFACTION OF THE OWNER AND ENGINEER. SUCH REPAIRS AND/OR REPLACEMENTS SHALL BE AN ABSORBED COST ITEM.
11. THE CONTRACTOR SHALL PROTECT TREES, SHRUBBERY, FLOWERS, SOD AND OTHER VEGETATION, NOT SPECIFIED FOR REMOVAL BY DRAWINGS OR SPECIFICATIONS, AND SHALL REPAIR OR REPLACE SUCH ITEMS AS ARE DAMAGED DURING CONSTRUCTION OF PROJECT WITH THE SAME TYPES AND QUALITY AS THOSE THAT ARE DAMAGED. SUCH REPAIR OR REPLACEMENT SHALL BE TO THE SATISFACTION OF THE ENGINEER AND THE OWNER OF THE PROPERTY INVOLVED, AND SHALL BE AN ABSORBED COST ITEM.
12. THE REPAIR OR REPLACEMENT OF ITEMS NOT LISTED ON THE BID FORM FOR SEPARATE PAYMENT, SHALL BE CONSIDERED AS INCIDENTAL TO THE PROJECT AND THE COST FOR SUCH ITEMS SHALL BE INCLUDED IN THE UNIT PRICE BID FOR CLEARING AND GRUBBING.
13. CONTRACTOR SHALL BE RESPONSIBLE FOR PROTECTION OF EXISTING POWER AND UTILITY POLES AFFECTED BY THE PROJECT ACTIVITY, INCLUDING REMOVAL, REPLACEMENT, RELOCATION AND/OR STABILIZING AND PROTECTING GUYS. CONTRACTOR SHALL COORDINATE ALL SUCH ACTIVITY WITH UTILITY COMPANY. ALL SUCH WORK SHALL BE AN ABSORBED COST ITEM.
14. UNSUITABLE BEDDING, BACKFILL, OR SITE SUBGRADE MATERIAL WHICH MAY BE ENCOUNTERED SHALL BE EXCAVATED TO THE LIMITS REQUIRED AND BACKFILLED WITH ACCEPTABLE MATERIAL TO THE LINES AND GRADES SHOWN ON THE PLANS.
15. CONTRACTOR SHALL RECONNECT ALL EXISTING WATER METERS ALONG THE PROJECT TO THE NEW WATER LINE. ALL SUCH WORK SHALL BE AN ABSORBED COST ITEM.

**WAGGONER**  
 Perspective. Passion. Innovation.  
 Jackson, MS • Homando, MS • Gulfport, MS  
 Ruston, LA • New Orleans, LA  
 www.waggonereng.com  
 1-800-661-3733

**SCHOOL STREET & WHEATLEY STREET**  
**WATER LINE RELOCATION**  
**CITY OF RIDGELAND, MISSISSIPPI**  
**EPA GRANT # XP-95416710-0**

DRAWING REVISIONS		
NO.	REMARKS	DATE

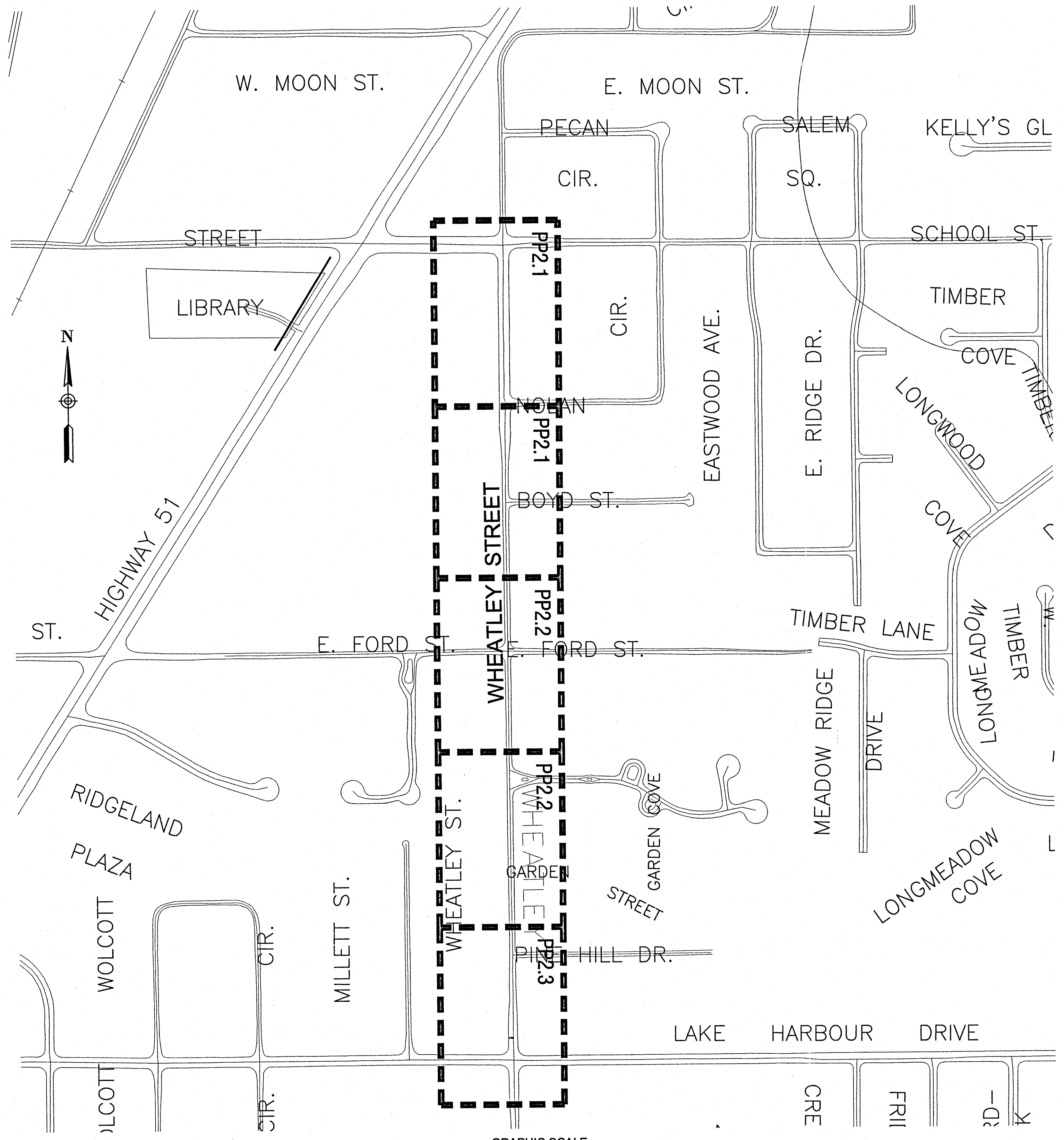


DRAWN BY: TFM      SCALE: AS SHOWN  
 DESIGNED BY: BOG      DATE: 01/01/11  
 CHECKED BY: CTK      PROJECT: W08-03  
 DRAWING TITLE:

**SCHOOL STREET VICINITY MAP & GENERAL NOTES**

SHEET NUMBER: **G1.1**

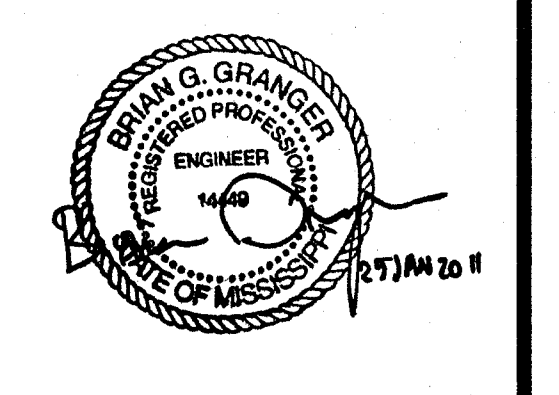
P:\Ridgeland\_City of W08083- Ridgeland School S\Draw\W08083-SC-H001-ST-COVER.dwg, VICINITY, 1/24/2011 12:56:21 PM, \print\cse TDS600



**WAGGONER**  
 Perspective. Passion. Innovation.  
 Jackson, MS • Homando, MS • Gulfport, MS  
 Ruston, LA • New Orleans, LA  
 www.waggonereng.com  
 1-800-661-3733

**SCHOOL STREET & WHEATLEY STREET  
 WATER LINE RELOCATION  
 CITY OF RIDGELAND, MISSISSIPPI  
 EPA GRANT # XP-95416710-0**

DRAWING REVISIONS		
NO.	REMARKS	DATE

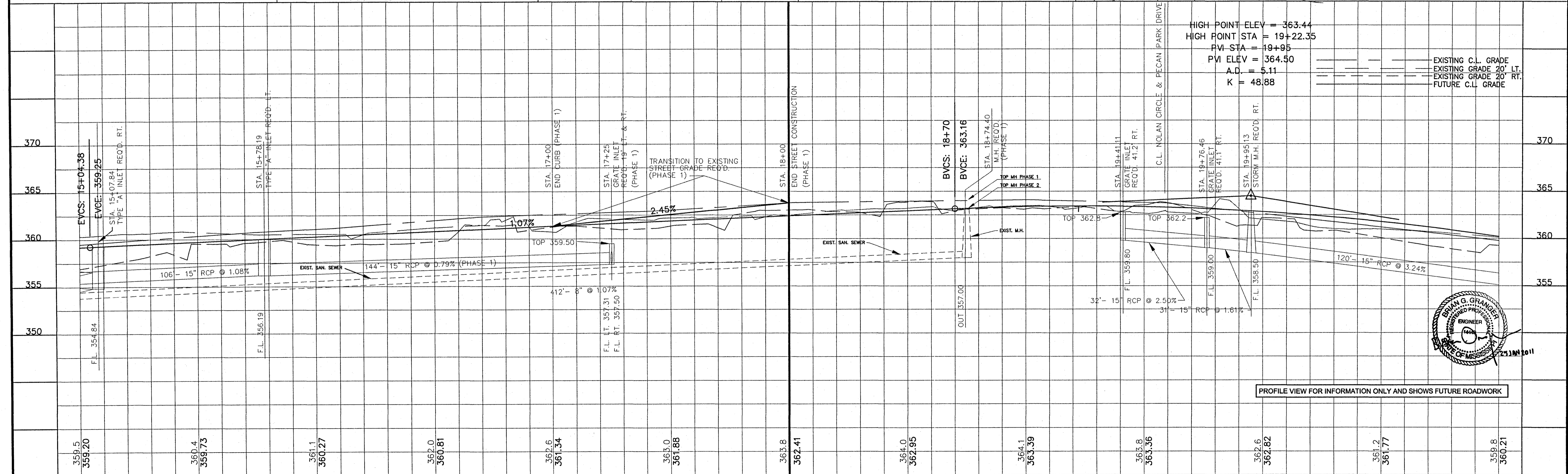
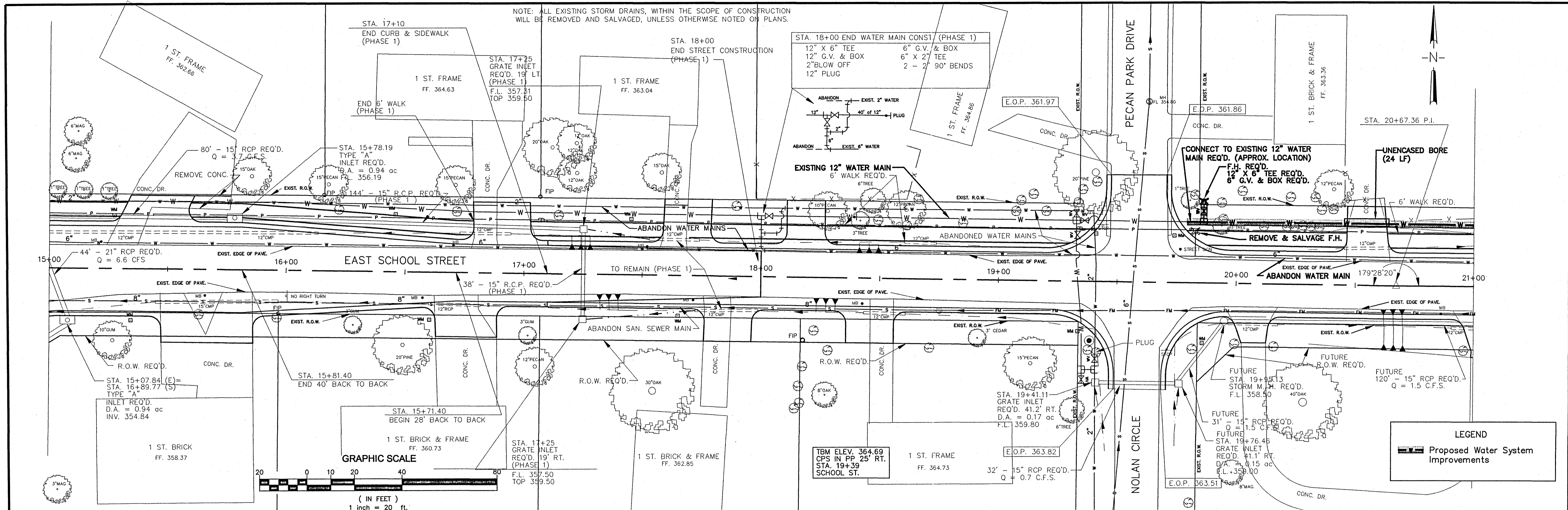


DRAWN BY: TTM	SCALE: AS SHOWN
DESIGNED BY: BGG	DATE: 01/20/11
CHECKED BY: CTX	PROJECT: W09083
DRAWING TITLE:	

**WHEATLEY STREET VICINITY MAP**

SHEET NUMBER:  
**G1.2**

P:\Ridgeland\_City\_01\090983- Ridgeland School\_S\DWG\SC23.DWG, PPI.1, 1/25/2011 11:44:42 AM, \print\Doc TD5620



NO.	DATE	REVISIONS

DESIGNED: \_\_\_\_\_ DATE: 01/2011  
 DRAWN: \_\_\_\_\_ SCALE: 1" = 20' HORIZ. / 1" = 5' VERT.  
 BY: \_\_\_\_\_

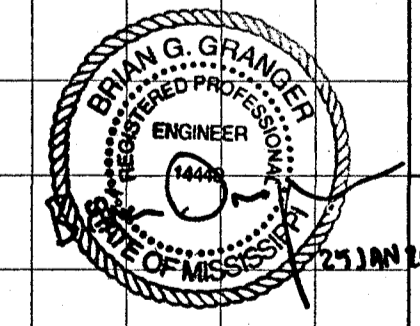
**WAGGONER**  
 Jackson, MS • Hernando, MS • Gulfport, MS  
 Ridgeland, LA • New Orleans, LA  
 www.waggonereng.com  
 1-800-681-3733

**CITY OF RIDGELAND, MISSISSIPPI**  
**MADISON COUNTY**

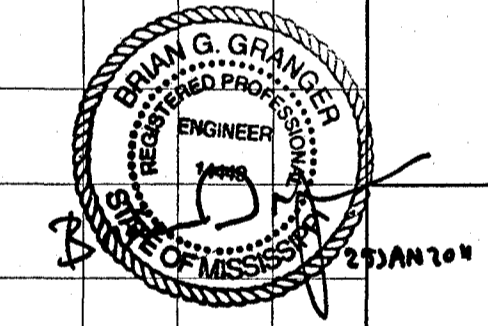
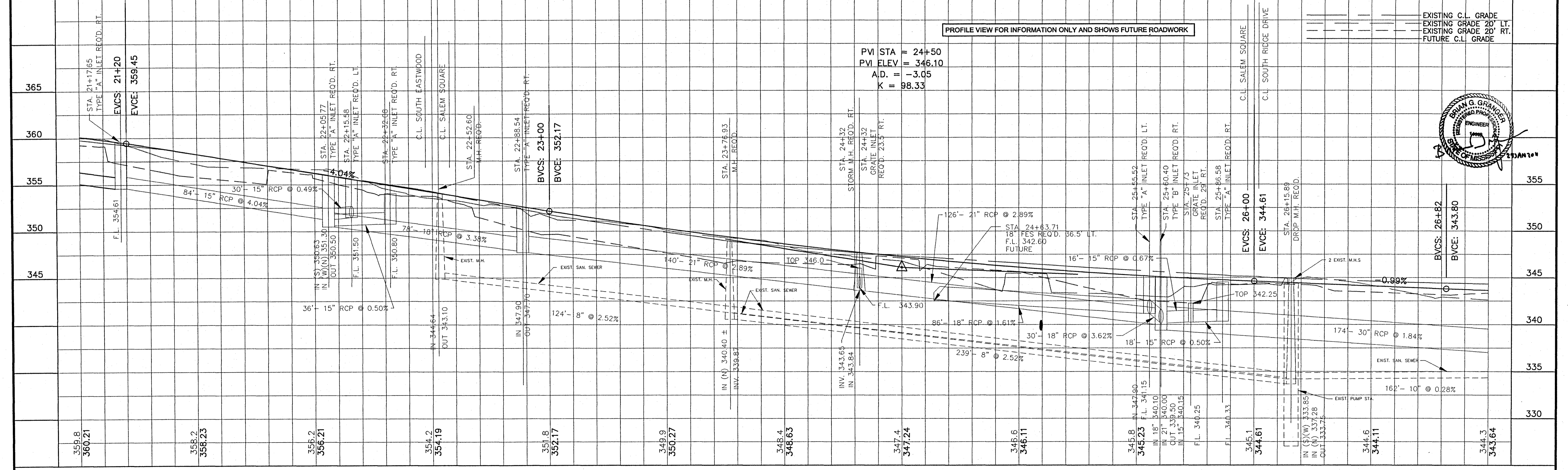
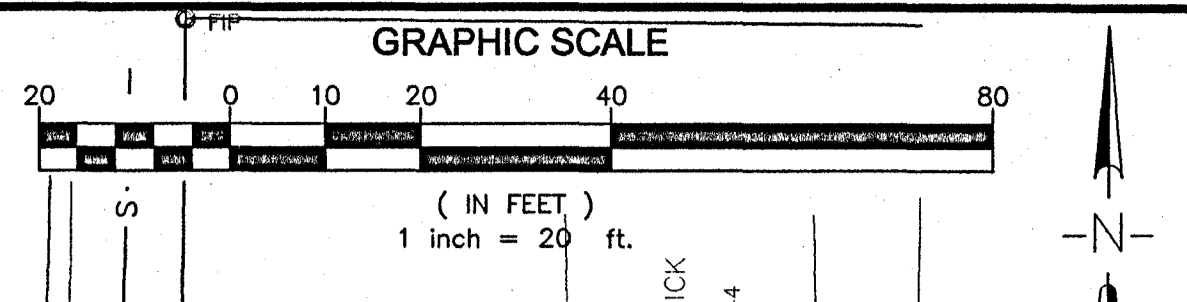
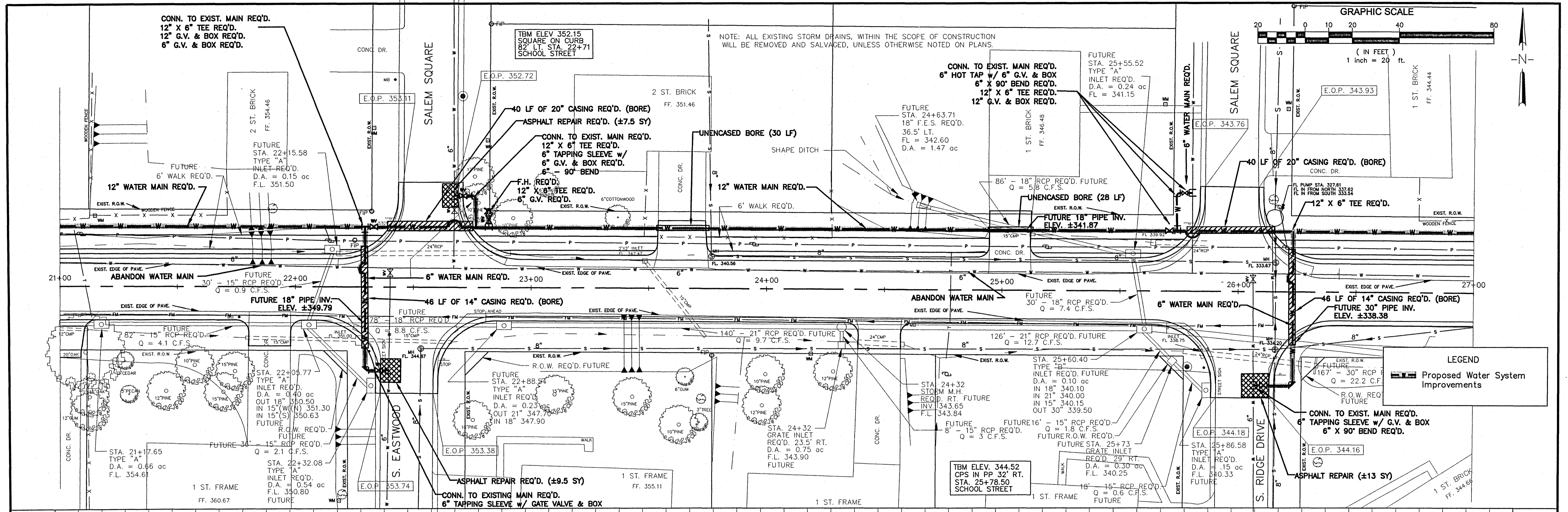
the city of **RIDGELAND**

**SCHOOL STREET & WHEATLEY STREET WATER LINE RELOCATION**  
 EPA GRANT # XP-95416710-0

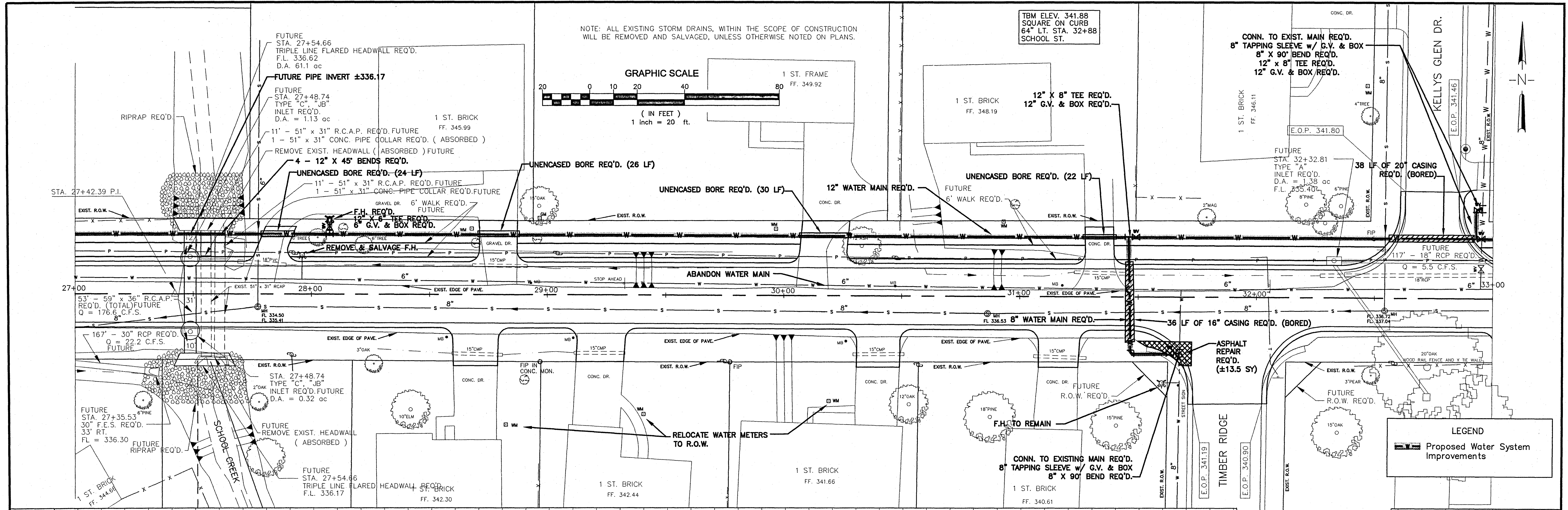
**SCHOOL STREET PLAN VIEW**  
 W.E.I. JOB NO. W09083 SHEET NO. PP1.1



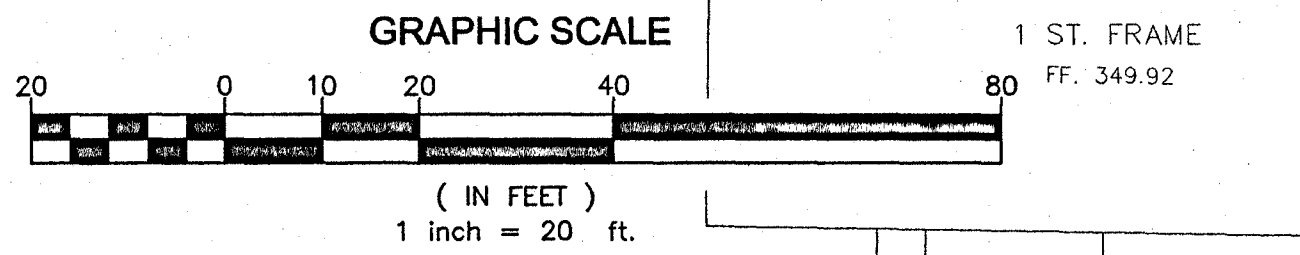
P:\Ridgeland\_City\_of\105683- Ridgeland\_School\_S\DWG\5032.DWG, PPI.2, 1/25/2011 11:46:17 AM, \Admin\Oce 105680



NO.	DATE	REVISIONS	DESIGNED	DATE	CITY OF RIDGELAND, MISSISSIPPI MADISON COUNTY		SCHOOL STREET & WHEATLEY STREET WATER LINE RELOCATION EPA GRANT # XP-95416710-0		W.E.I. JOB NO. W09083	SHEET NO. PP1.2
			BY	01/2011	WAGGONER Jackson, MS • Hernando, MS • Gulfport, MS Ridgeland, LA • New Orleans, LA www.waggonereng.com 1-800-661-3733		SCHOOL STREET PLAN VIEW			



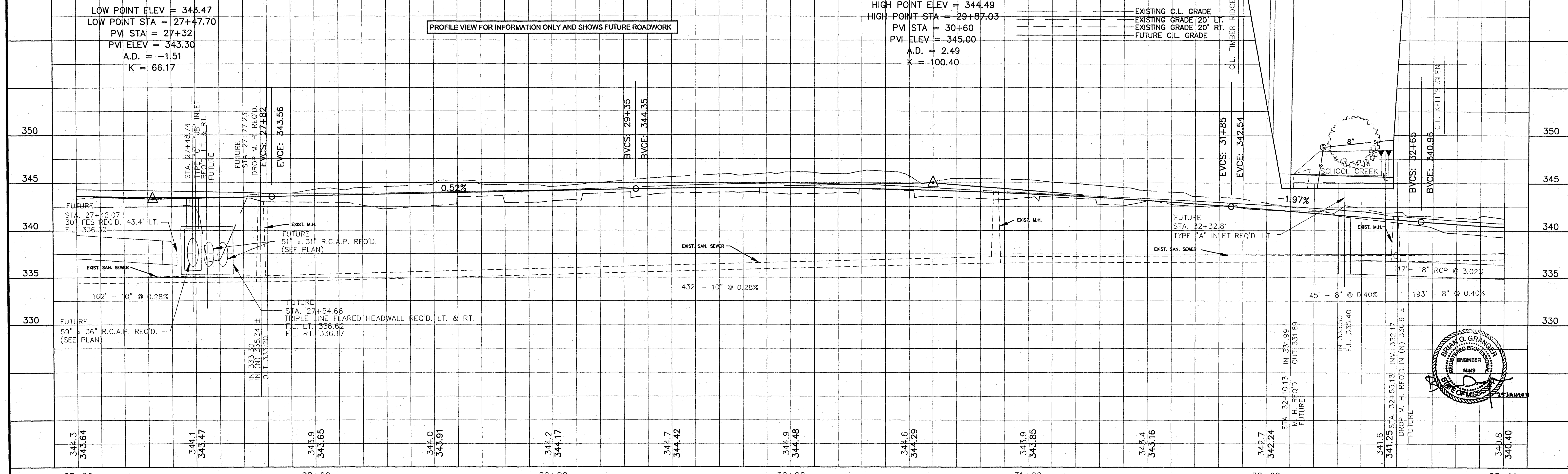
NOTE: ALL EXISTING STORM DRAINS, WITHIN THE SCOPE OF CONSTRUCTION WILL BE REMOVED AND SALVAGED, UNLESS OTHERWISE NOTED ON PLANS.



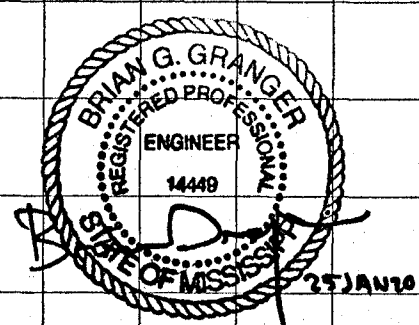
LOW POINT ELEV = 343.47  
 LOW POINT STA = 27+47.70  
 PVI STA = 27+32  
 PVI ELEV = 343.30  
 A.D. = -1.51  
 K = 66.17

HIGH POINT ELEV = 344.49  
 HIGH POINT STA = 29+87.03  
 PVI STA = 30+60  
 PVI ELEV = 345.00  
 A.D. = 2.49  
 K = 100.40

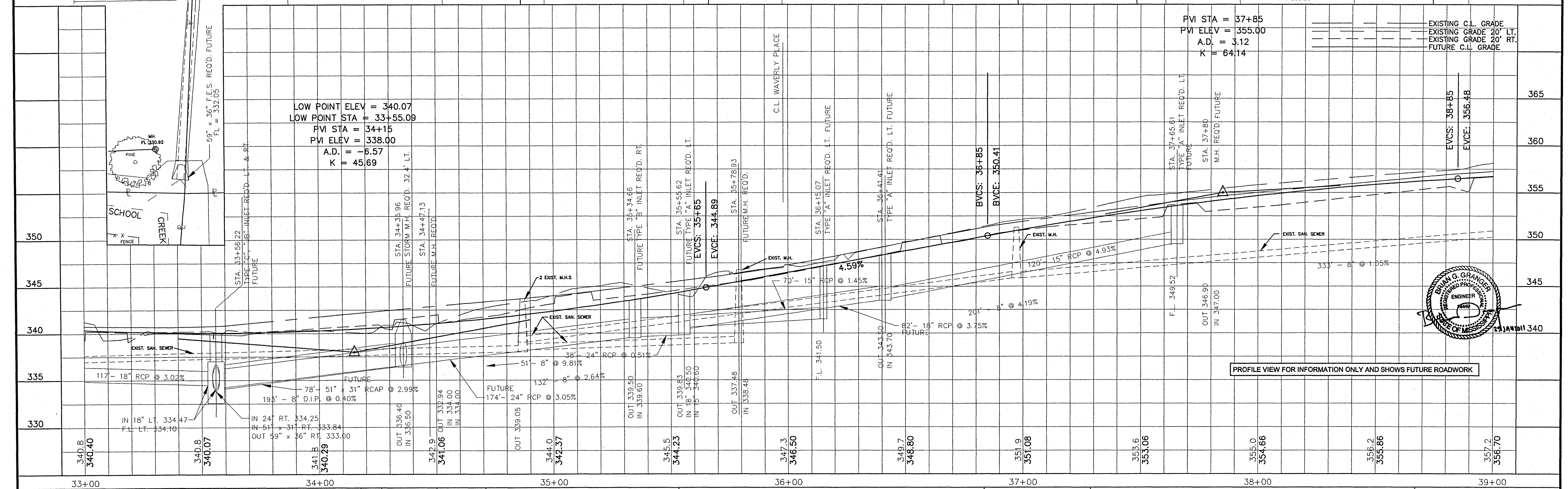
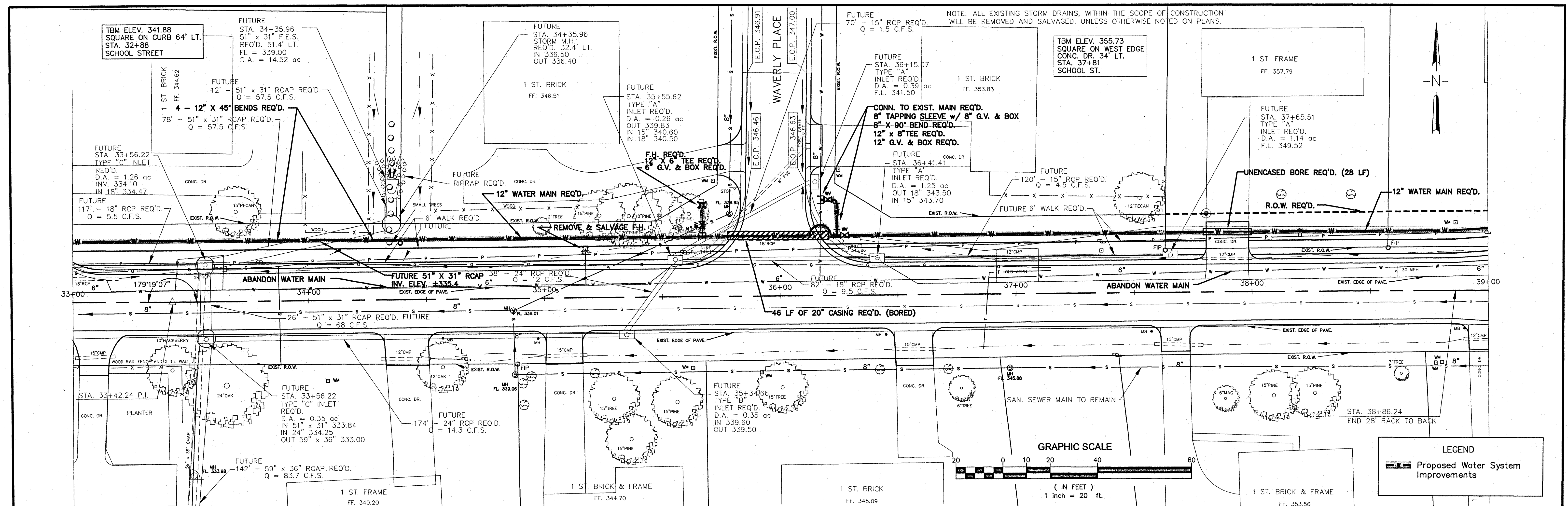
PROFILE VIEW FOR INFORMATION ONLY AND SHOWS FUTURE ROADWORK



**LEGEND**  
 Proposed Water System Improvements

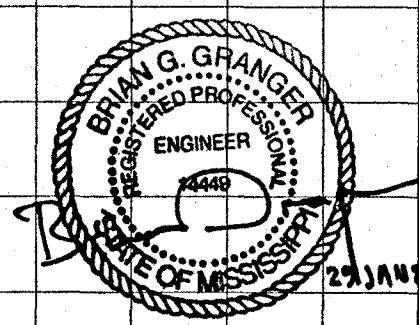


P:\Ridgeland\_City of\W09083 - Ridgeland School\DWG\SS52.DWG, PP1.4, 1/25/2011 11:47:48 AM, \Print\Oce 105800

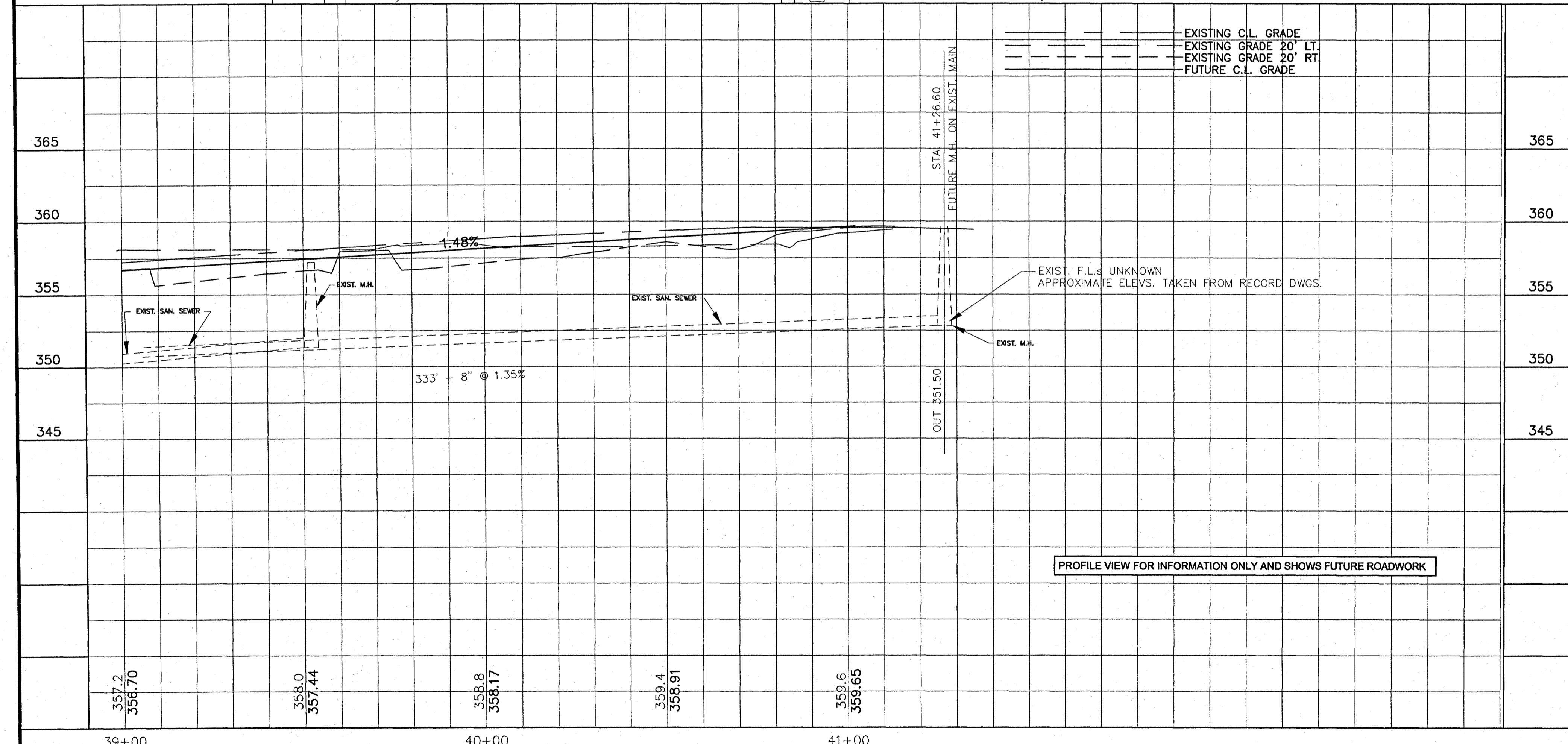
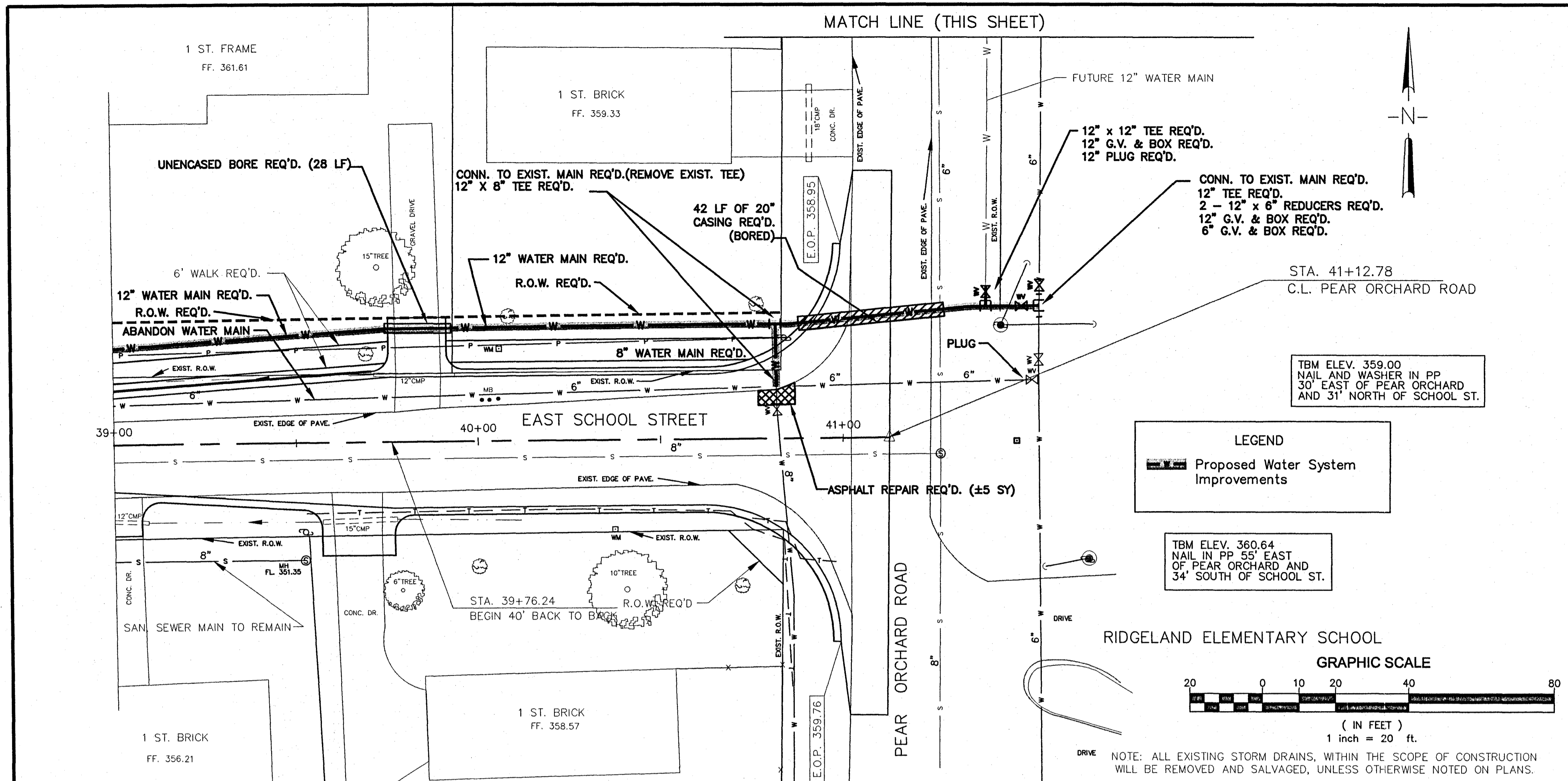


LOW POINT ELEV = 340.07  
 LOW POINT STA = 33+55.09  
 PVI STA = 34+15  
 PVI ELEV = 338.00  
 A.D. = -5.57  
 K = 45.69

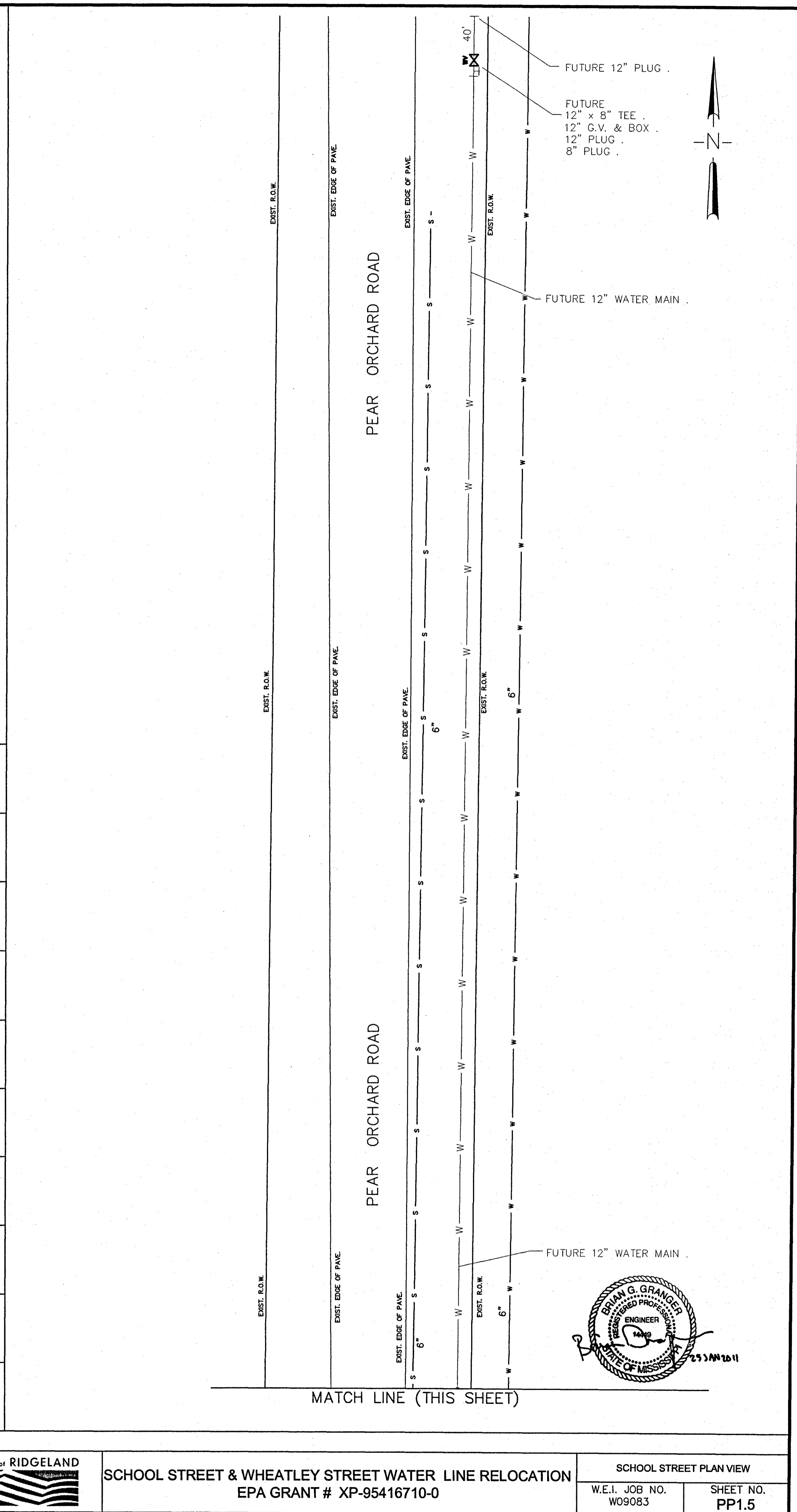
PVI STA = 37+85  
 PVI ELEV = 355.00  
 A.D. = 3.12  
 K = 64.14



P:\Ridgeland\_City of\000003- Ridgeland School\000003-000003.DWG, PPI.5, 1/25/2011 11:48:20 AM, \print\Doc 105800



DESIGNED	DATE	357.2 356.70	358.0 357.44	358.8 358.17	359.4 358.91	359.6 359.65	
DRAWN	SCALE	39+00					
RC/MM/BG	1"=20' HORIZ. 1"=5' VERT.	40+00					
BY		41+00					

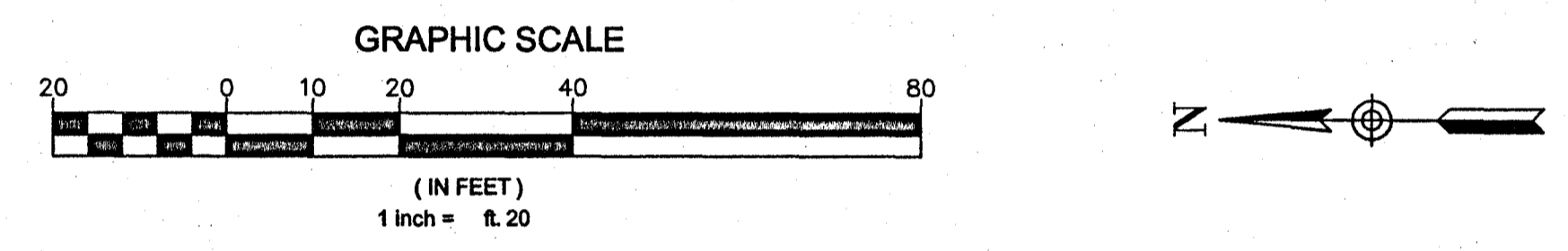
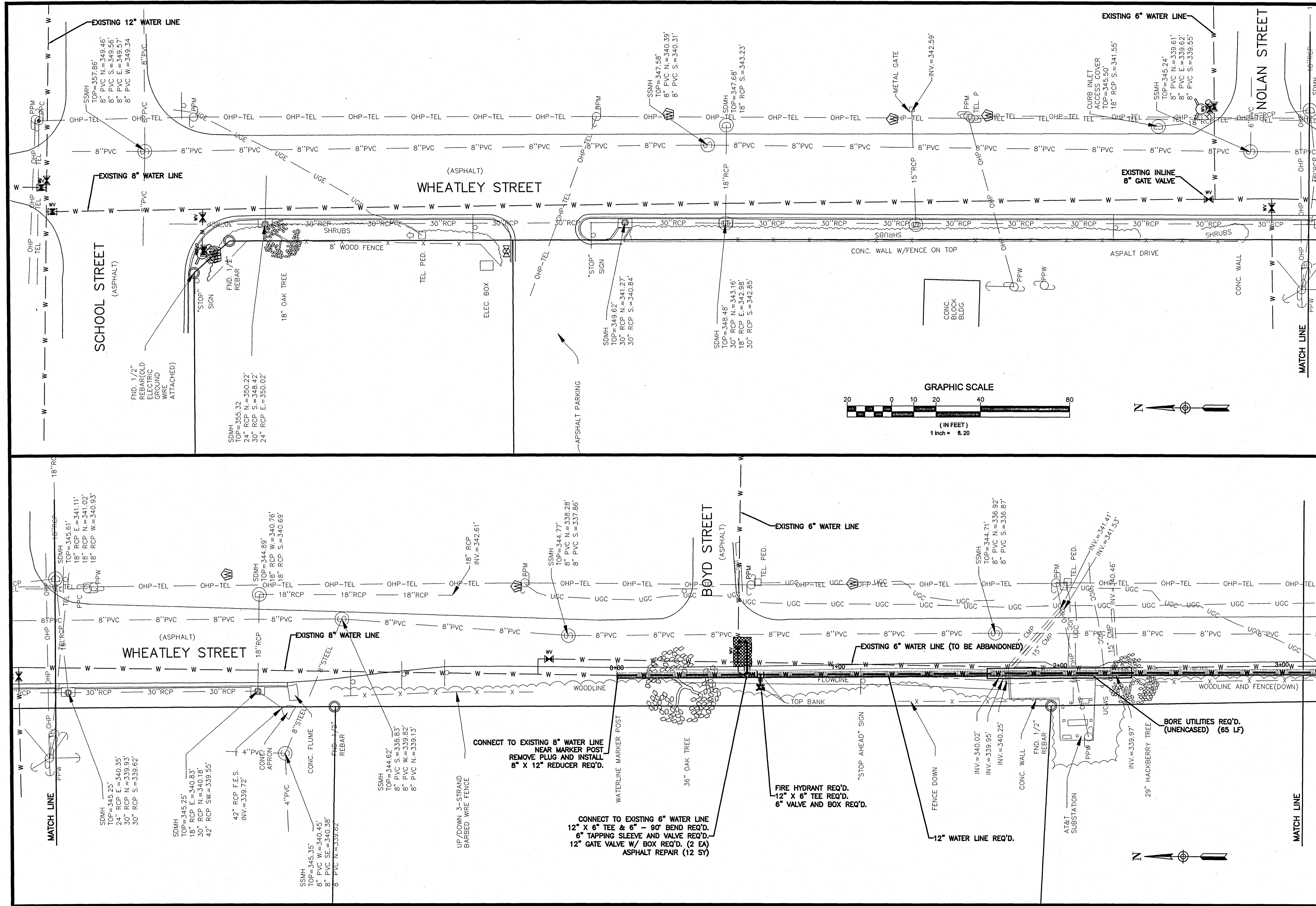


NO. DATE REVISIONS BY		DESIGNED DATE 01/2011		JACKSON, MS HARRISBURG, MS GULFPORT, MS ROSTER, LA NEW ORLEANS, LA www.waggonereng.com 1-800-661-3733		CITY OF RIDGELAND, MISSISSIPPI MADISON COUNTY		the city of RIDGELAND		SCHOOL STREET & WHEATLEY STREET WATER LINE RELOCATION EPA GRANT # XP-95416710-0		SCHOOL STREET PLAN VIEW W.E.I. JOB NO. W09083 SHEET NO. PP1.5	
-----------------------	--	--------------------------	--	--	--	--	--	-----------------------	--	--	--	--	--





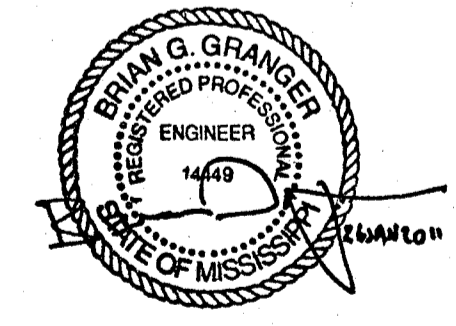
F:\Ridgeland\_City of W09083- Ridgeland School S:\Draw\W09083-WHEATLEY-ST-PLAN.dwg PP2.1, 1/26/2011 11:35:27 AM, \\print\Doc TD5600



**WAGGONER**  
 Perspective. Passion. Innovation.  
 Jackson, MS • Hernando, MS • Gulfport, MS  
 Ruston, LA • New Orleans, LA  
 www.waggonereng.com  
 1-800-661-3733

**SCHOOL STREET & WHEATLEY STREET  
 WATER LINE RELOCATION  
 CITY OF RIDGELAND, MS  
 EPA GRANT # XP-95416710-0**

DRAWING REVISIONS		
NO.	REMARKS	DATE

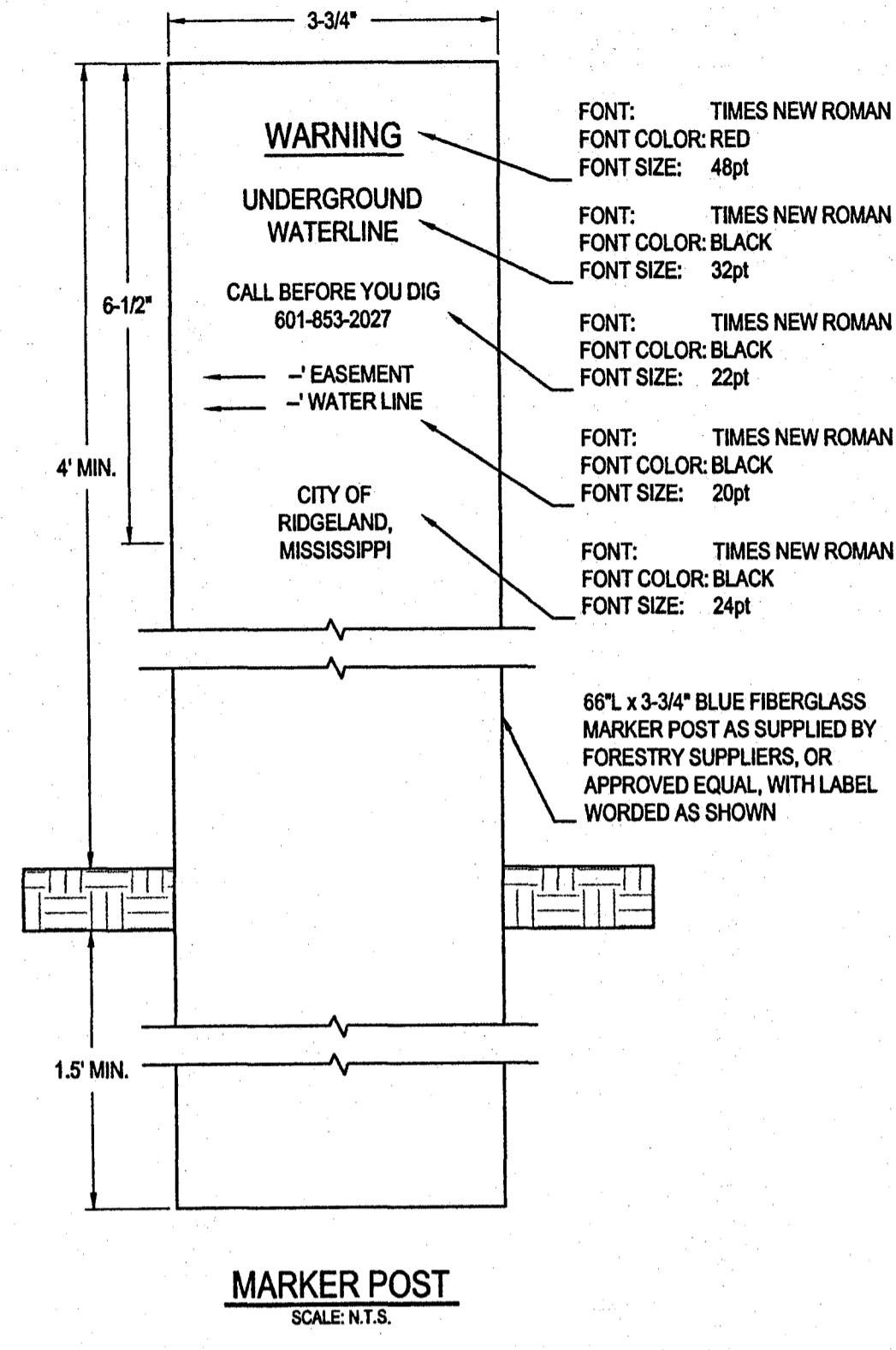


DRAWN BY: BGG	SCALE: AS SHOWN
DESIGNED BY: BGG	DATE: 01/20/11
CHECKED BY: CTK	PROJECT: W09-083

**WHEATLEY STREET PLAN VIEW**  
 SHEET NUMBER  
**PP2.1**







FONT: TIMES NEW ROMAN  
 FONT COLOR: RED  
 FONT SIZE: 48pt

FONT: TIMES NEW ROMAN  
 FONT COLOR: BLACK  
 FONT SIZE: 32pt

FONT: TIMES NEW ROMAN  
 FONT COLOR: BLACK  
 FONT SIZE: 22pt

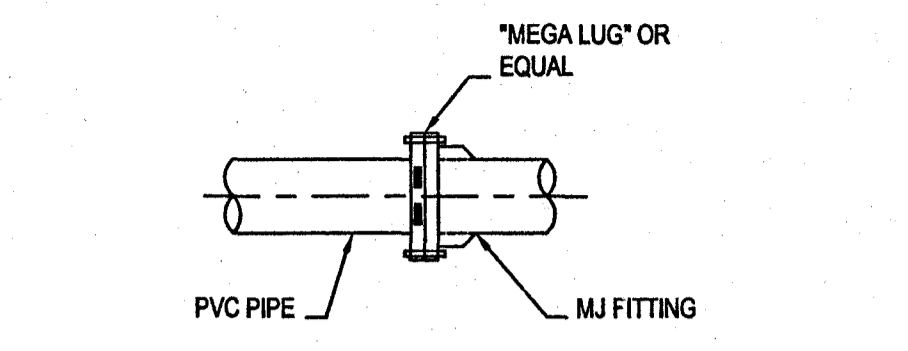
FONT: TIMES NEW ROMAN  
 FONT COLOR: BLACK  
 FONT SIZE: 20pt

FONT: TIMES NEW ROMAN  
 FONT COLOR: BLACK  
 FONT SIZE: 24pt

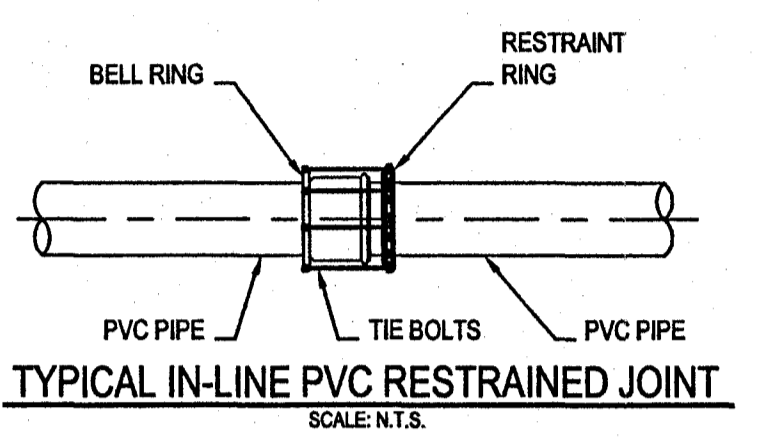
PIPE DIAMETER	"R" FOR 11 1/2° BEND	"R" FOR 22 1/2° BEND	"R" FOR 45° BEND	"R" FOR 90° BEND	"R" FOR DEAD END
8"	3'	6'	12'	22'	25'
12"	4'	8'	17'	42'	37'
16"	5'	11'	23'	55'	49'
18"	6'	12'	25'	61'	55'
24"	8'	16'	33'	80'	73'
30"	10'	20'	41'	99'	90'

- NOTES:**
- RESTRAINED JOINT PIPE SHALL BE USED AT ALL BENDS.
  - THE LENGTH OF RESTRAINED PIPE ON EACH SIDE OF THE BEND SHALL BE NOT LESS THAN THE "R" DISTANCES.
  - ALL JOINTS WITHIN THE DISTANCE "R" ESTABLISHED ABOVE SHALL BE RESTRAINED.
  - ALL PIPE IN CASINGS SHALL BE RESTRAINED, BUT PIPE LENGTHS IN CASING SHALL NOT APPLY TOWARD REQUIRED RESTRAINED LENGTHS FOR ADJACENT BENDS.
  - RESTRAINED JOINT LENGTHS WERE CALCULATED BASED ON DIPRA THRUST RESTRAINT GUIDELINES UNDER THE FOLLOWING CONDITIONS:  
 LAYING CONDITION - TYPE 3  
 SOIL DESIGNATION - CLAY 2  
 DEPTH OF COVER - 3.5'  
 DESIGN PRESSURE - 150 PSI  
 SAFETY FACTOR - 1.5
  - IF ANY OF THESE ASSUMPTIONS SIGNIFICANTLY DIFFER FROM THE LAYING CONDITIONS, NEW THRUST RESTRAINT CALCULATIONS SHOULD BE PERFORMED.
  - FOR BENDS IN THE VERTICAL PLANE INCREASE THE "R" DISTANCE BY A FACTOR OF 1.75.

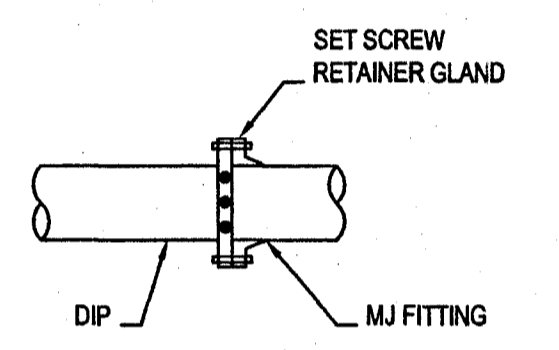
**RESTRAINED JOINT DETAIL**  
 SCALE: N.T.S.



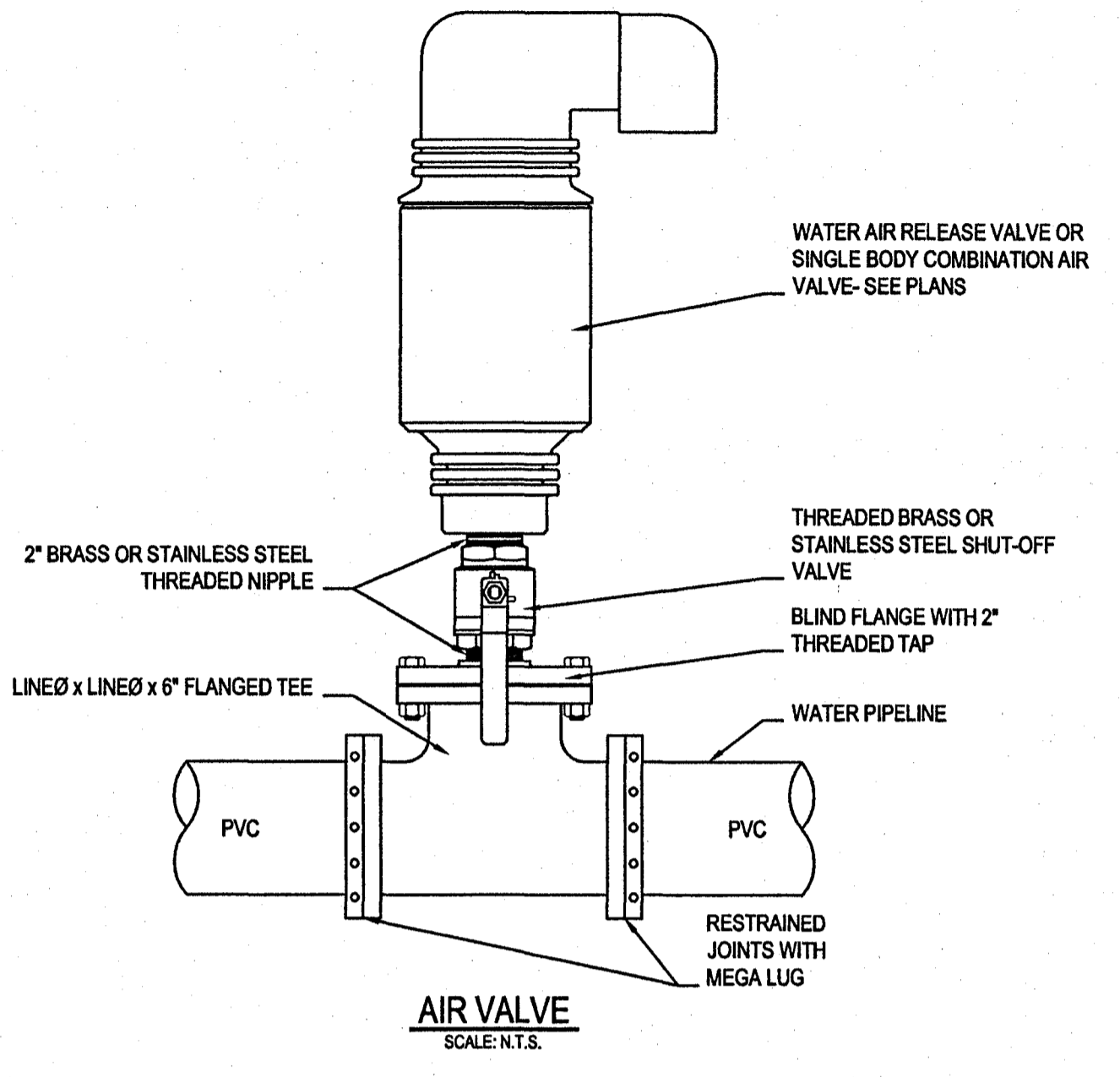
**TYPICAL PVC RESTRAINED JOINT AT MJ FITTING**  
 SCALE: N.T.S.



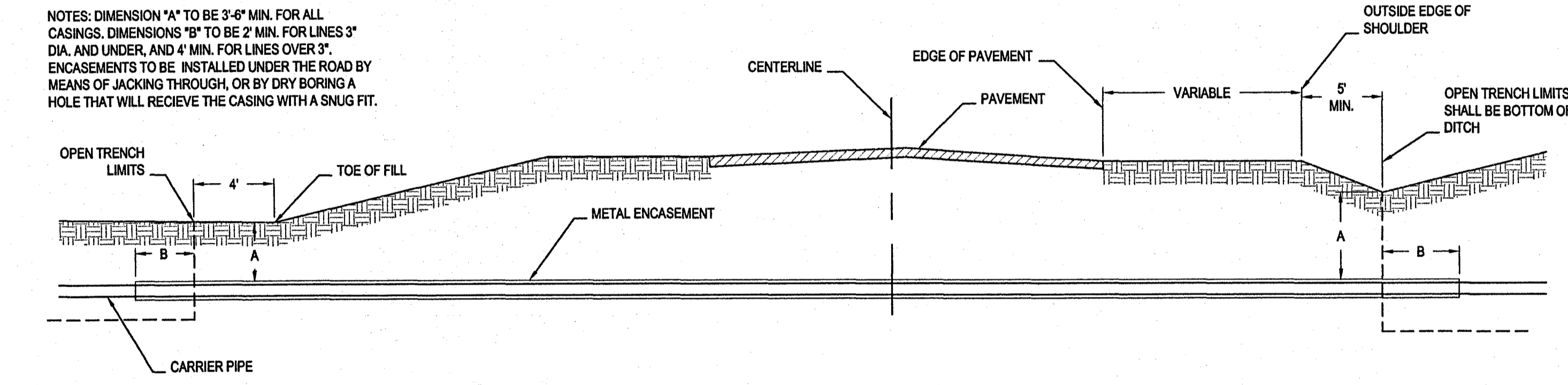
**TYPICAL IN-LINE PVC RESTRAINED JOINT**  
 SCALE: N.T.S.



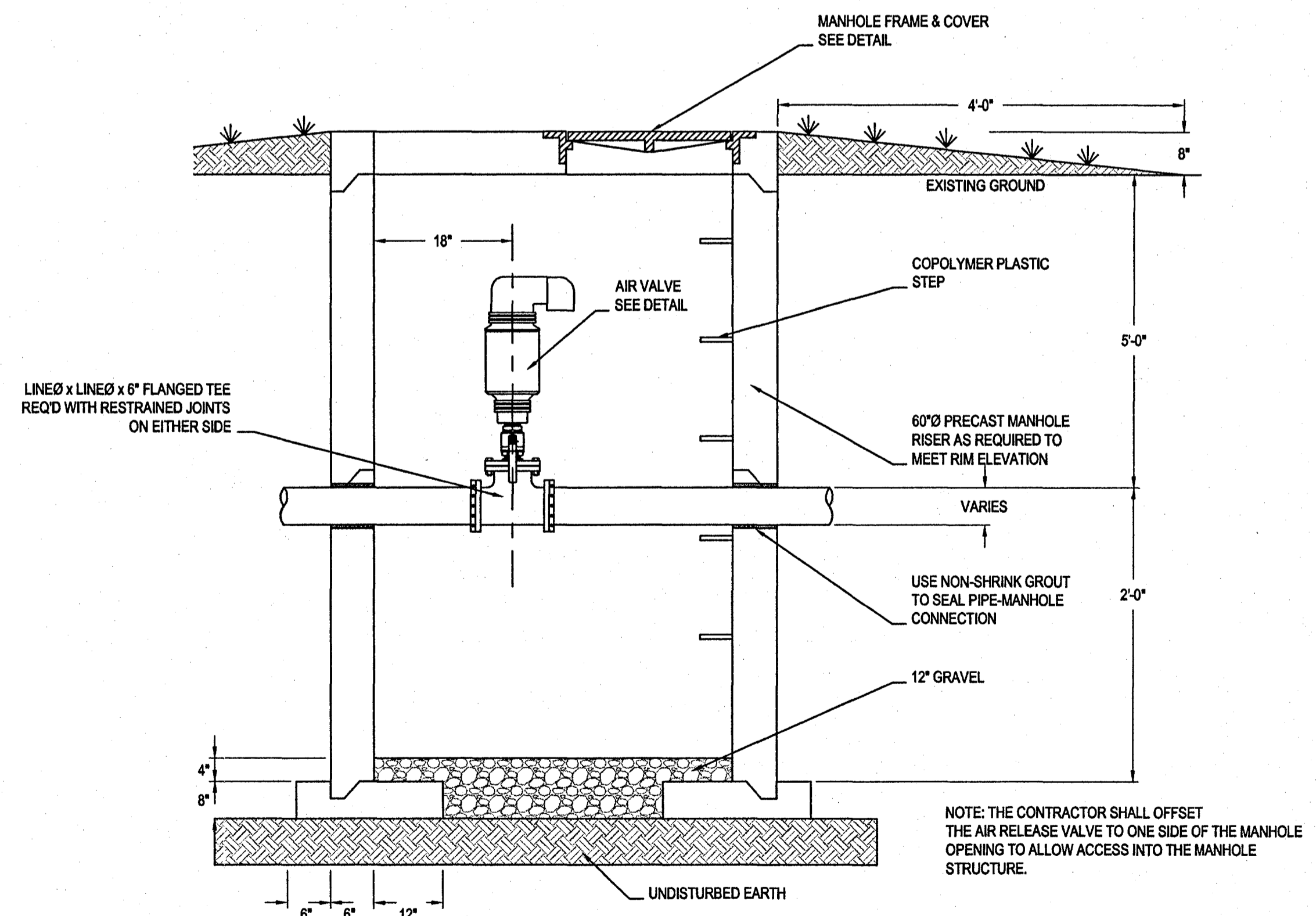
**TYPICAL DI RESTRAINED JOINT AT MJ FITTING**  
 SCALE: N.T.S.



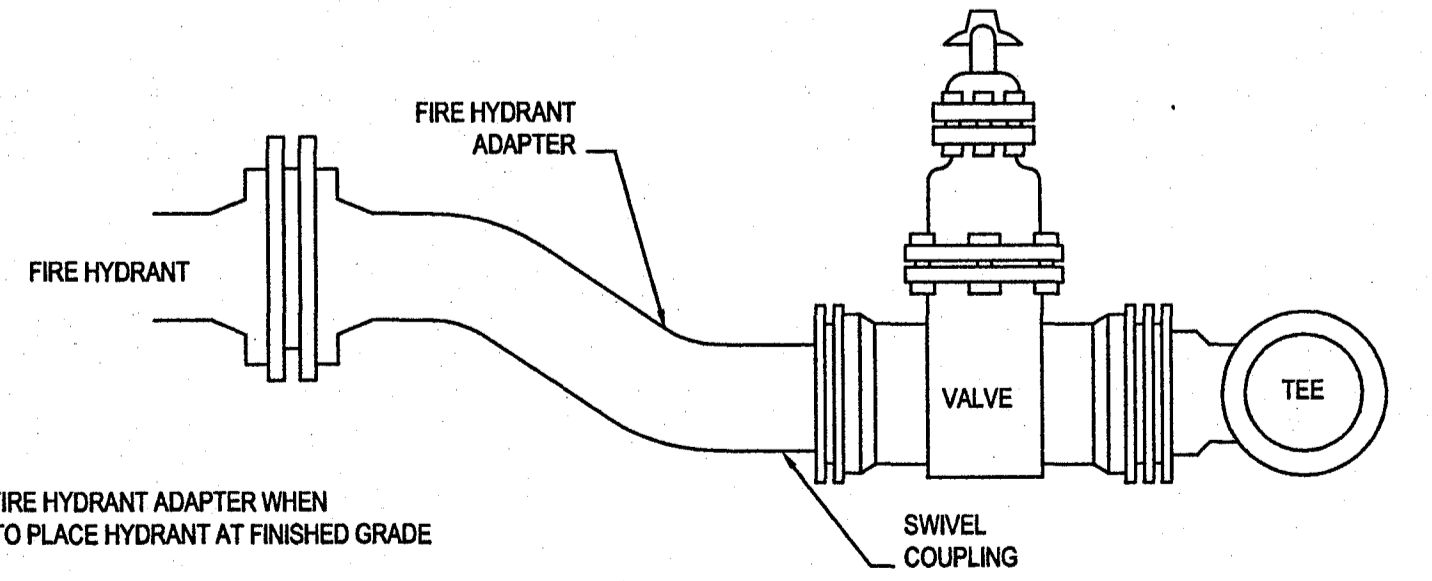
**AIR VALVE HOUSING**  
 SCALE: N.T.S.



**CROSS SECTION OF CONDUIT CROSSING**  
 SCALE: N.T.S.



NOTE: THE CONTRACTOR SHALL OFFSET THE AIR RELEASE VALVE TO ONE SIDE OF THE MANHOLE OPENING TO ALLOW ACCESS INTO THE MANHOLE STRUCTURE.



**FIRE HYDRANT ADAPTER**  
 SCALE: N.T.S.

NOTES: USE FIRE HYDRANT ADAPTER WHEN NECESSARY TO PLACE HYDRANT AT FINISHED GRADE

**WAGGONER**  
 Perspective. Passion. Innovation.  
 Jackson, MS • Hernando, MS • Gulfport, MS  
 Ruston, LA • New Orleans, LA  
 www.waggonereng.com  
 1-800-661-3733

**SCHOOL STREET & WHEATLEY STREET  
 WATER LINE RELOCATION  
 CITY OF RIDGELAND, MISSISSIPPI  
 EPA GRANT # XP-95416710-0**

NO.	REVISIONS	DATE

SEAL  
  
 12/13/2011

DRAWN BY: TFM SCALE: N.T.S.  
 DESIGNED BY: BGS DATE: 01/01/11  
 CHECKED BY: CLK PROJECT: W0660  
 DRAWING TITLE:

**WATER STANDARD DETAILS**

SHEET NUMBER  
**SD1.2**