

CITY OF JACKSON, MISSISSIPPI
WHITE OAK CREEK INTERCEPTOR SEWER

PROJECT NO. 311.5

DIRECTOR OF PUBLIC WORKS
TED SOMERS, P.E.

MANAGER, WATER AND SEWER UTILITIES DIVISION

DAN B. TOLAR, P.E.

SANITARY ENGINEER

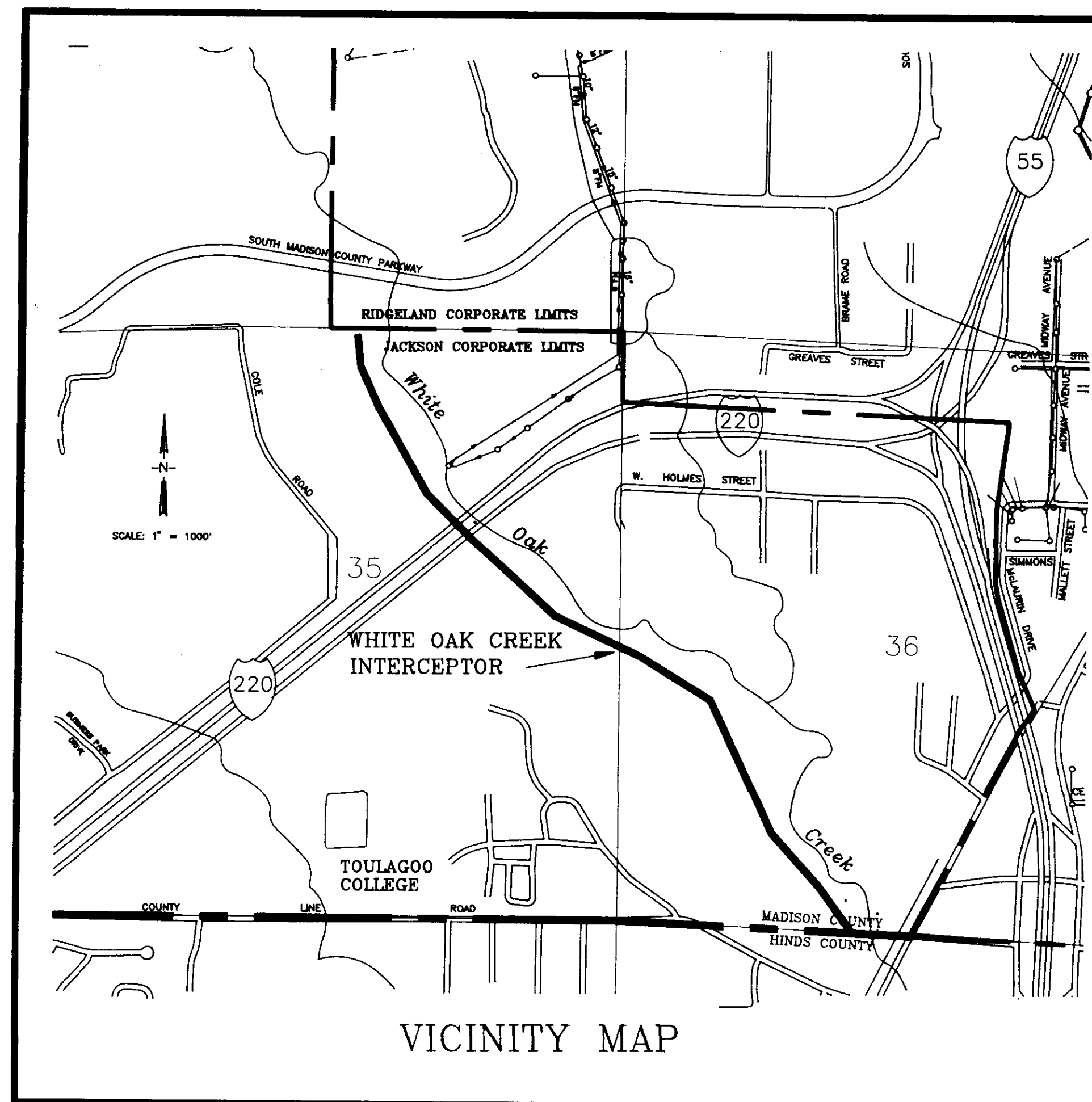
MARY ROBERTS

CITY CLERK

GAYRYTHA HUFF

CITY ATTORNEY

LESLIE SCOTT



Kane Ditto - Mayor

JACKSON CITY COUNCIL

DENT ANGLIN, WARD 1

LOUIS E. ARMSTRONG, WARD 2

KENNETH I. STOKES, WARD 3

CREDELL CALHOUN, WARD 4

E.C. FOSTER, WARD 5
President

MARCIA WEAVER, WARD 6

MARGARET CARROLL BARRETT, WARD 7
Vice - President

FEBRUARY - 1994

WAGGONER ENGINEERING INC.
Consulting Engineers
Jackson / Pascagoula, Mississippi

PWP-05020

INDEX TO DRAWINGS	
SHEET NO.	TITLE
1	TITLE SHEET
2	INDEX TO DRAWINGS AND GENERAL CONSTRUCTION NOTES
3	PROJECT LAYOUT SHEET
4	INTERCEPTOR SEWER PLAN-PROFILE SHEET STA.10+00 TO STA.25+50
5	INTERCEPTOR SEWER PLAN-PROFILE SHEET STA.25+50 TO STA.41+50
6	INTERCEPTOR SEWER PLAN-PROFILE SHEET STA.41+50 TO STA.57+50
7	INTERCEPTOR SEWER PLAN-PROFILE SHEET STA.57+50 TO STA.72+50
8	INTERCEPTOR SEWER PLAN-PROFILE SHEET STA.72+50 TO STA.87+50
9	INTERCEPTOR SEWER PLAN-PROFILE SHEET STA.87+50 TO STA.91+75.72 12" SEWER PLAN - PROFILE SHEET
10	SANITARY SEWER STANDARD DETAIL SHEET
10A	CONSTRUCTION ACCESS PLAN

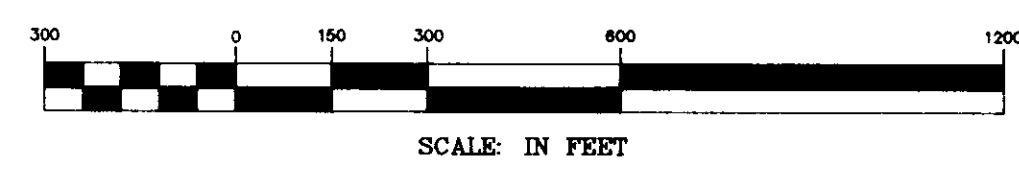
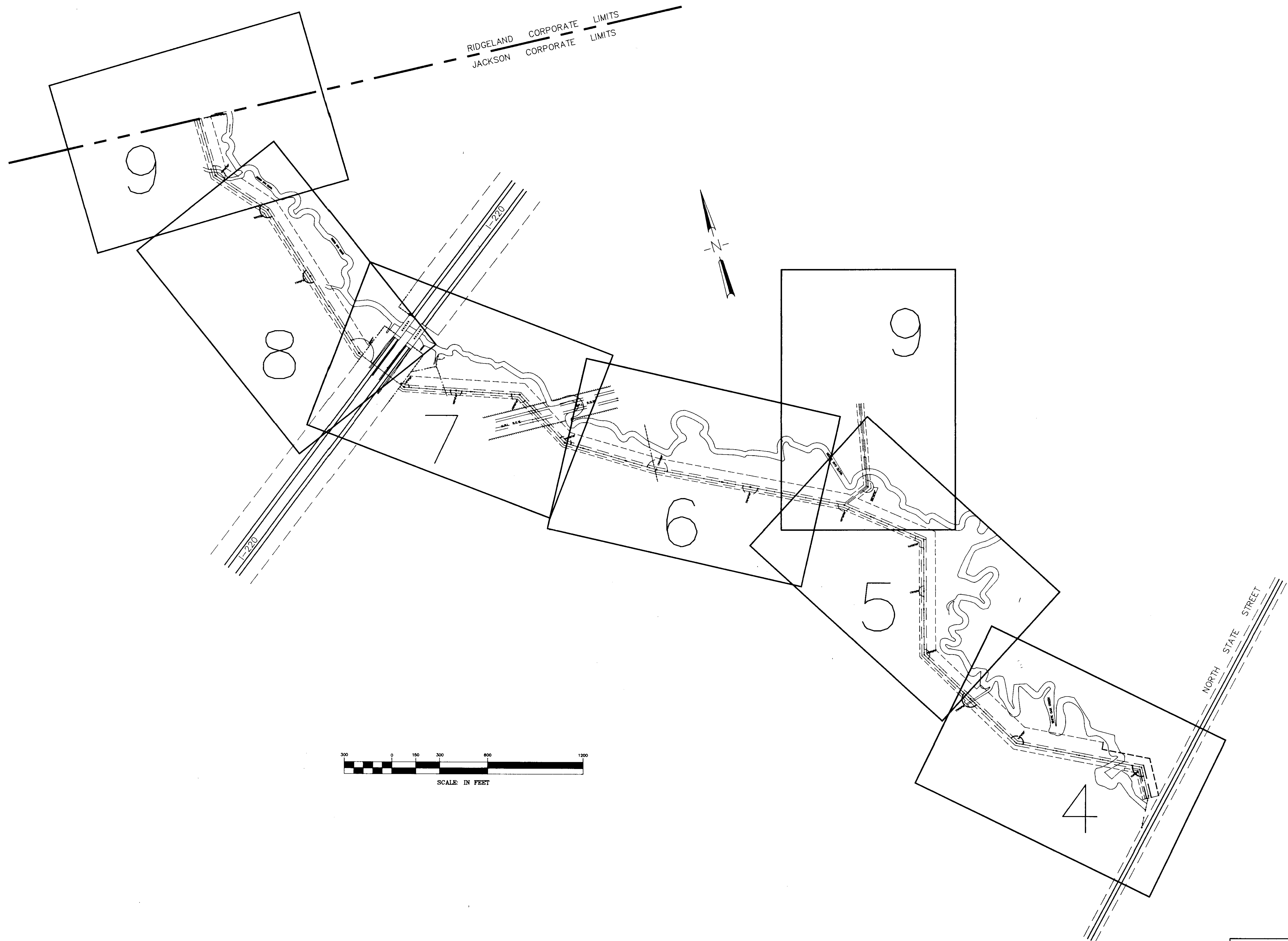
GENERAL CONSTRUCTION NOTES

- Any existing utility locations shown on plans are approximate only. The Contractor shall coordinate the location (horizontal and vertical) of any existing utilities within the limits of the work (power, telephone, gas, water, sewer, etc.) with the appropriate utility company before construction begins.
- Any utility line or service line encountered during construction, whether shown on plans or not, shall be protected by the Contractor and any repairs necessary due to damage to same by the Contractor shall be at no additional cost to the Owner.
- The Contractor shall fertilize and seed all areas where the existing vegetation is removed or disturbed during construction and not required to be solid sodded, paved, or graveled.
- All detailed construction staking will be by Contractor at no cost to the Owner.
- The Contractor shall be responsible for completing all sampling and testing of materials incorporated into the project and for submission of same to Engineer for review. Prior use test results, manufacturer's certificates, or proposed mix designs shall be submitted to the Engineer for review before incorporation into project. This shall include backfill, concrete, asphalt, steel, paint, piping, fencing materials, aggregates, seed and other items as specified by the Engineer. All testing shall be an absorbed cost item.
- All testing certifications shall state that the subject material meets the specified quality, grade, purity, class or weight, or that the subject material meets or exceeds the requirement of the applicable ASTM, AASHTO, MSHD or other standards. Certifications shall be submitted to the Engineer prior to incorporation of the subject material into the project.

GENERAL CONSTRUCTION NOTES (CONTINUED)

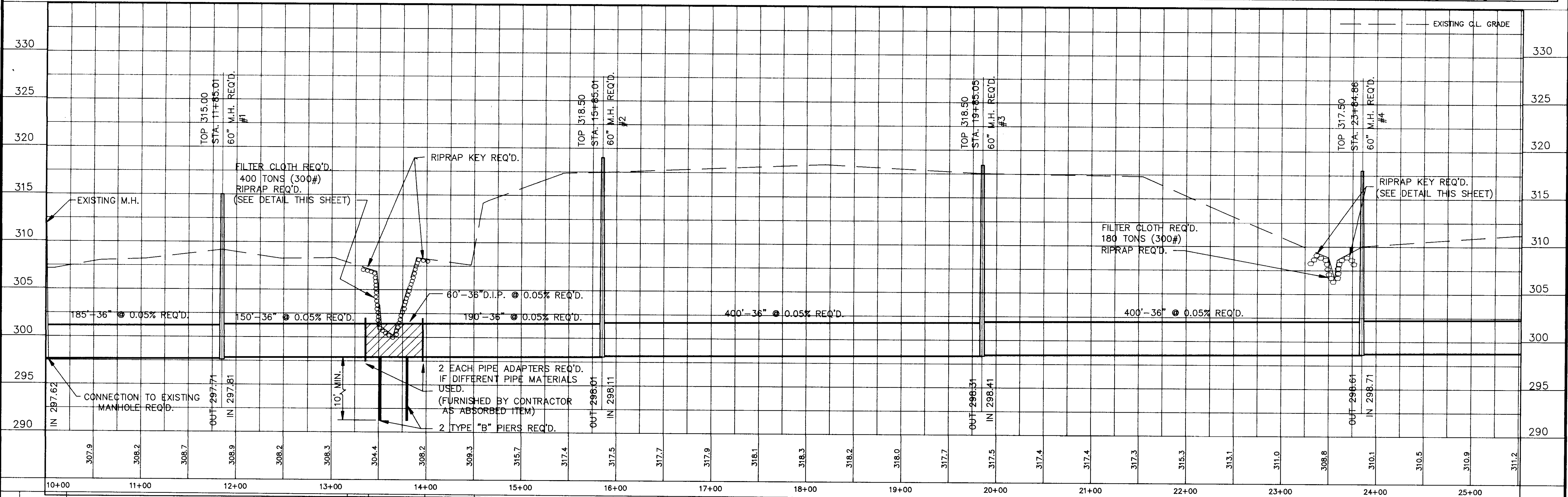
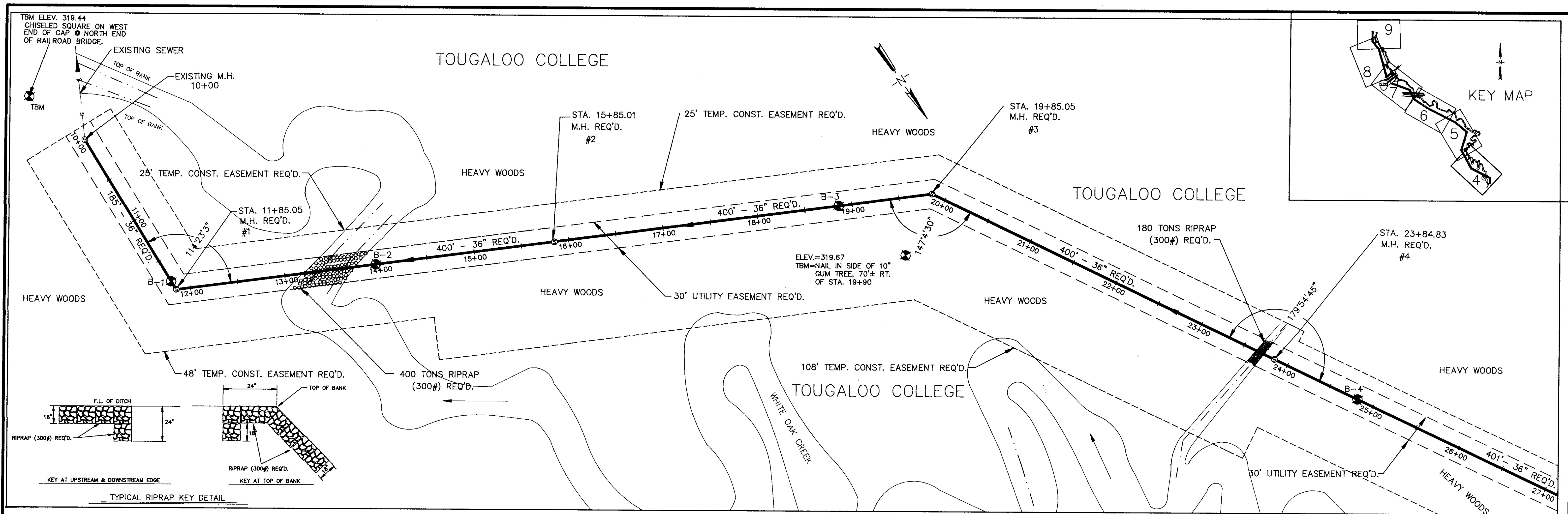
- The Contractor shall repair or replace fences that are damaged, removed or otherwise disturbed during construction. Fences shall be restored to their original condition or better using the same types of material, wire, boards, chain link, pipe, etc. as used for original construction.
- The Contractor shall repair roadways, driveways, sidewalks, yard surfaces, curb and gutter sections, etc., disturbed during construction. Repairs shall be made by using the types of material used during original construction and to the complete satisfaction of the Owner and Engineer.
- The Contractor shall protect trees, shrubbery, flowers, sod and other vegetation, not specified for removal by Drawings or Specifications, and shall repair or replace such items as are damaged during construction of project with the same types and quality as those that are damaged. Such repair or replacement shall be to the satisfaction of the Engineer and the Owner of the property involved.
- The repair or replacement of items not listed on the Bid Form for separate payment, shall be considered as incidental to the project and the cost for such items shall be included in the unit price bid for Clearing and Grubbing.
- The limits of construction for this project, unless otherwise indicated, shall be the area within the temporary easements indicated on the executed easement documents.

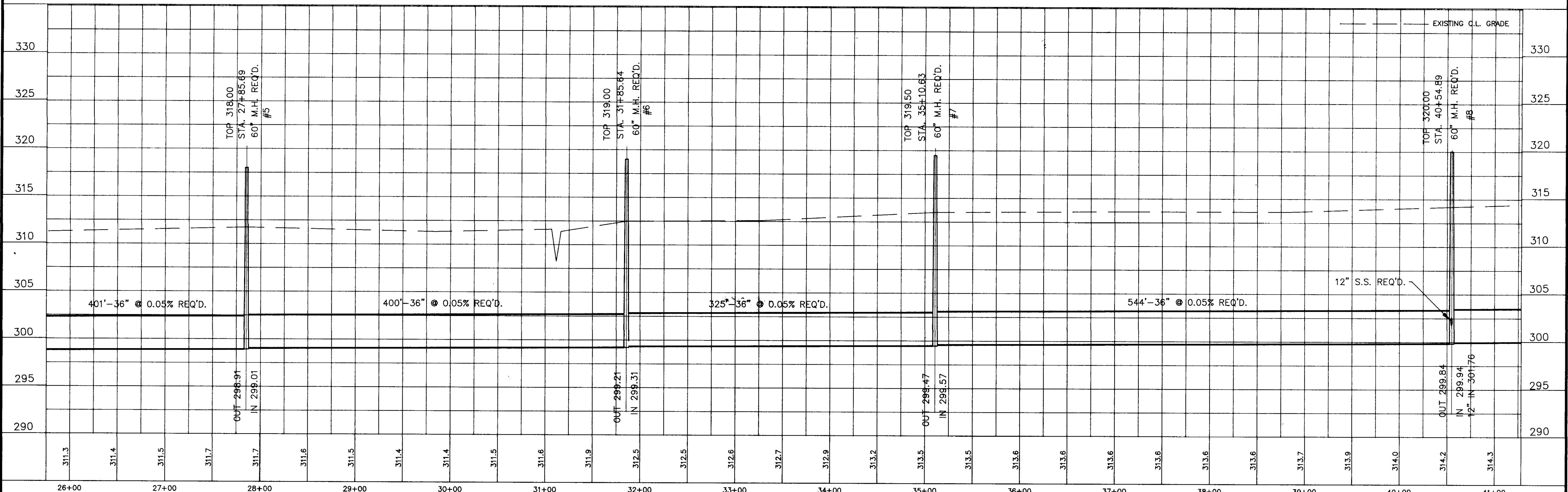
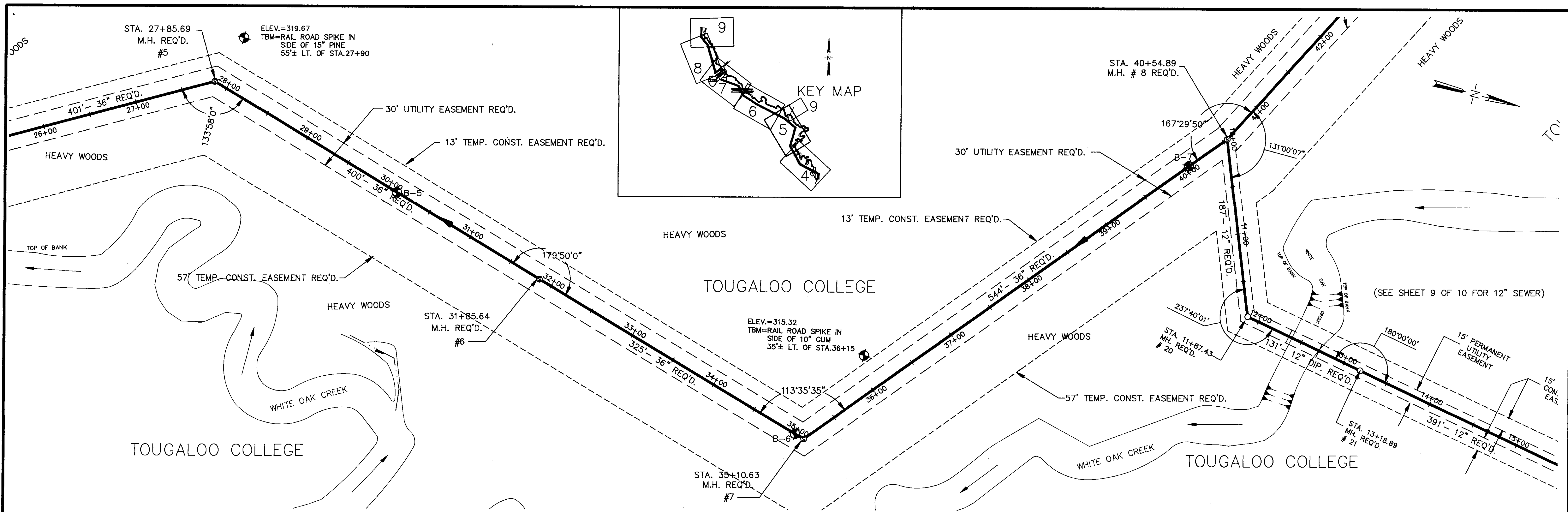
CITY OF JACKSON, MISSISSIPPI			
WHITE OAK CREEK INTERCEPTOR			
INDEX TO DRAWINGS AND GENERAL CONSTRUCTION NOTES			
WAGGONER ENGINEERING, INC. Consulting Engineers - Jackson, Mississippi			
DRAWN BY: C.S.	DATE: 2-14-94	SHEET NUMBER	
REVIEWED BY: W.L.M.	SCALE: NOT TO SCALE	2 OF 10	



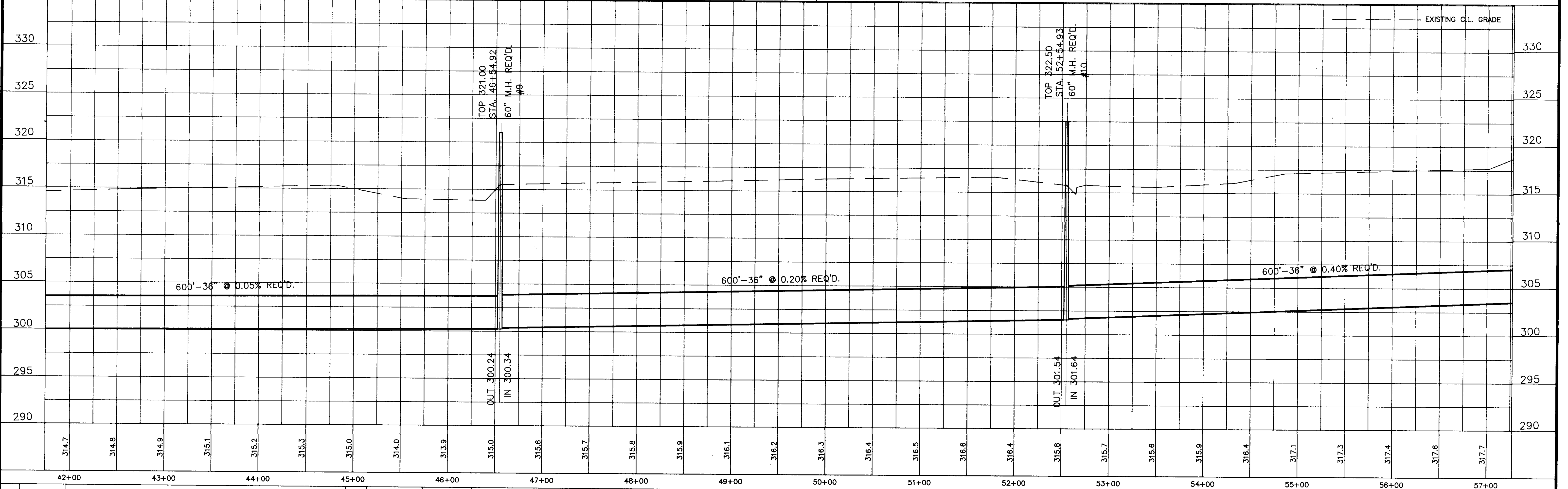
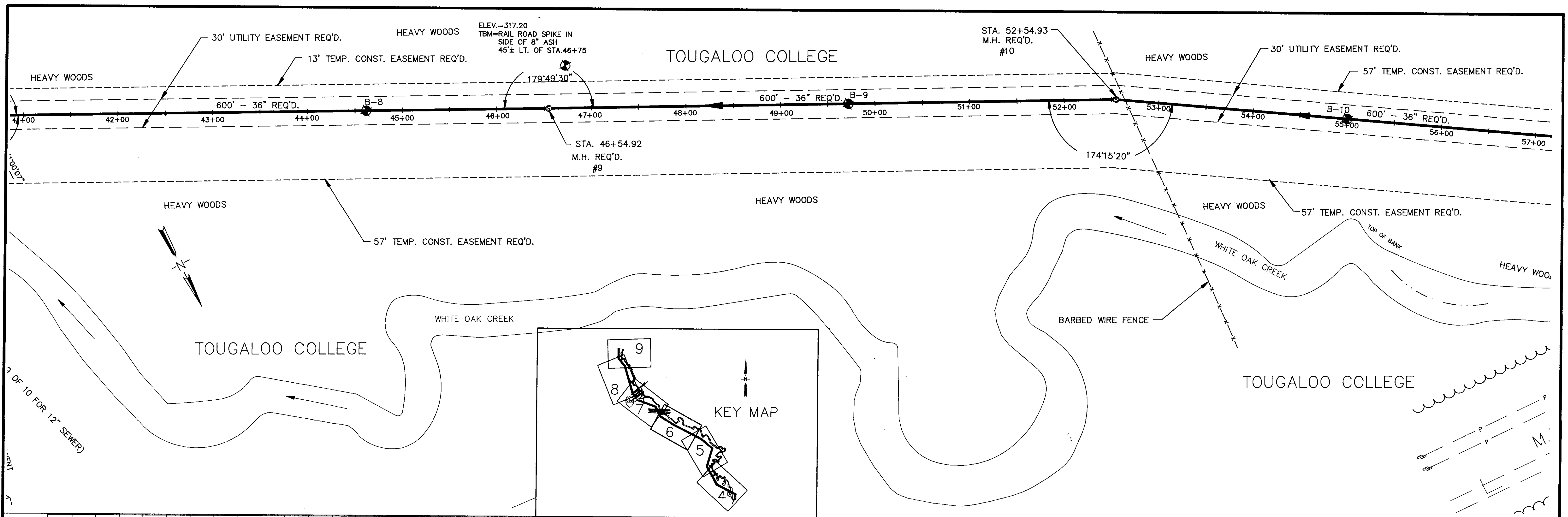
CITY OF JACKSON, MISSISSIPPI		
WHITE OAK CREEK INTERCEPTOR		
PROJECT LAYOUT		
WAGGONER ENGINEERING, INC. Consulting Engineers - Jackson, Mississippi		
DRAWN BY: C.S.	DATE: 2-14-94	SHEET NUMBER
REVIEWED BY: W.L.M.	SCALE: AS SHOWN	3 OF 10

REVISED: 8-30-1993

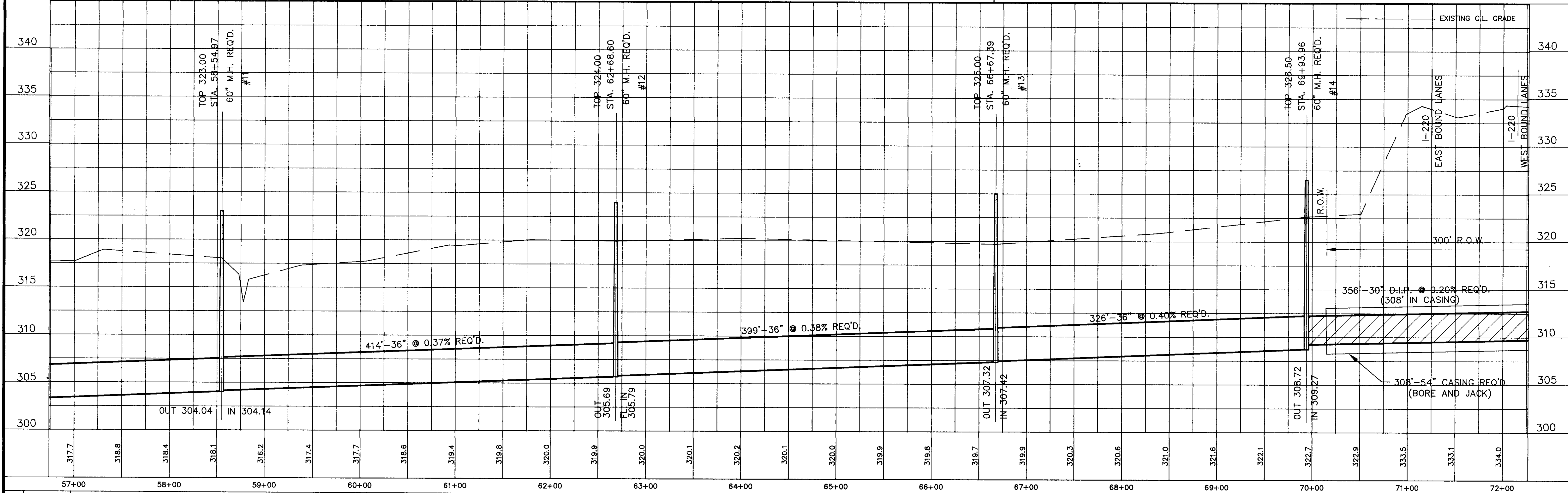
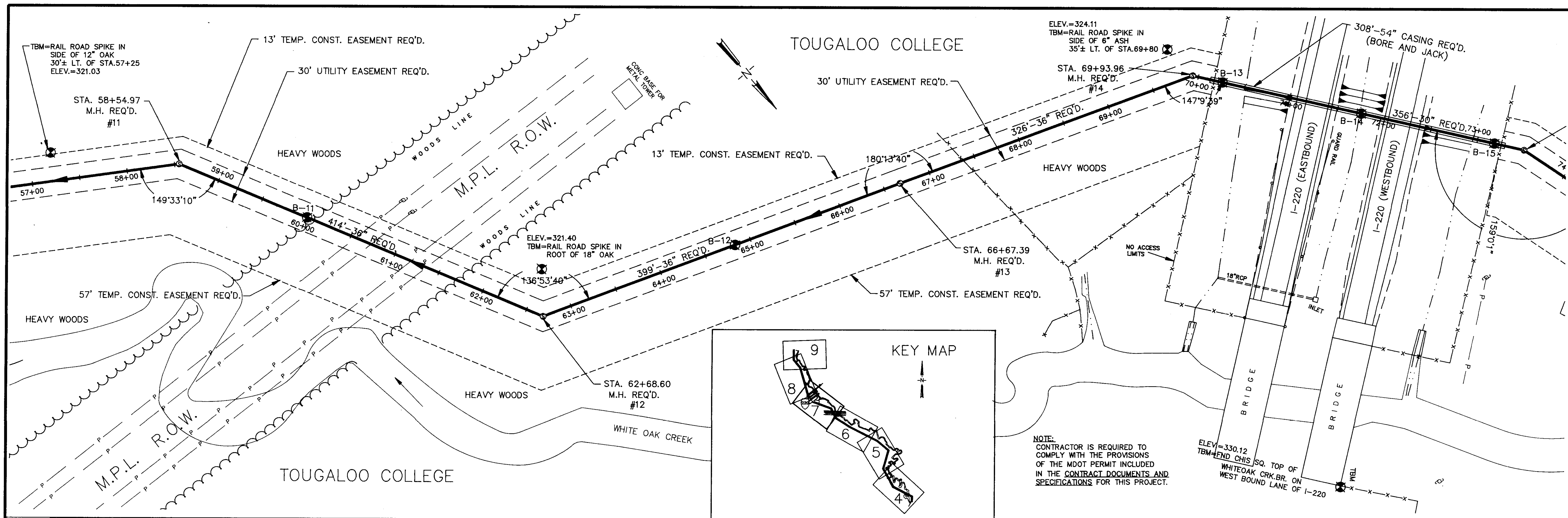




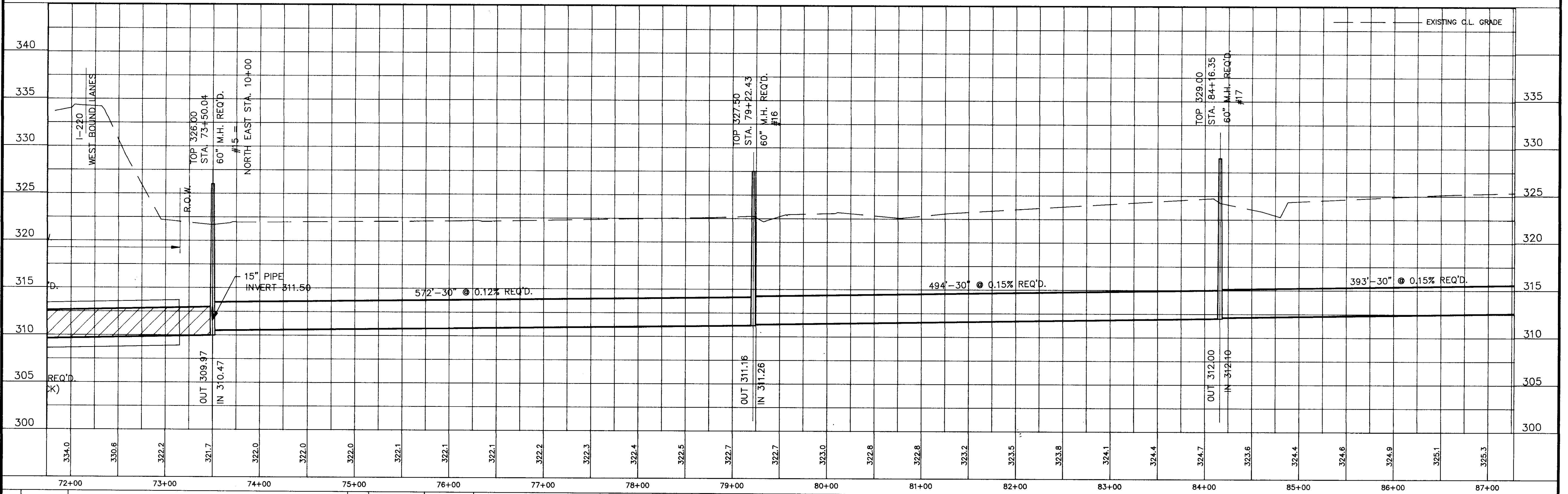
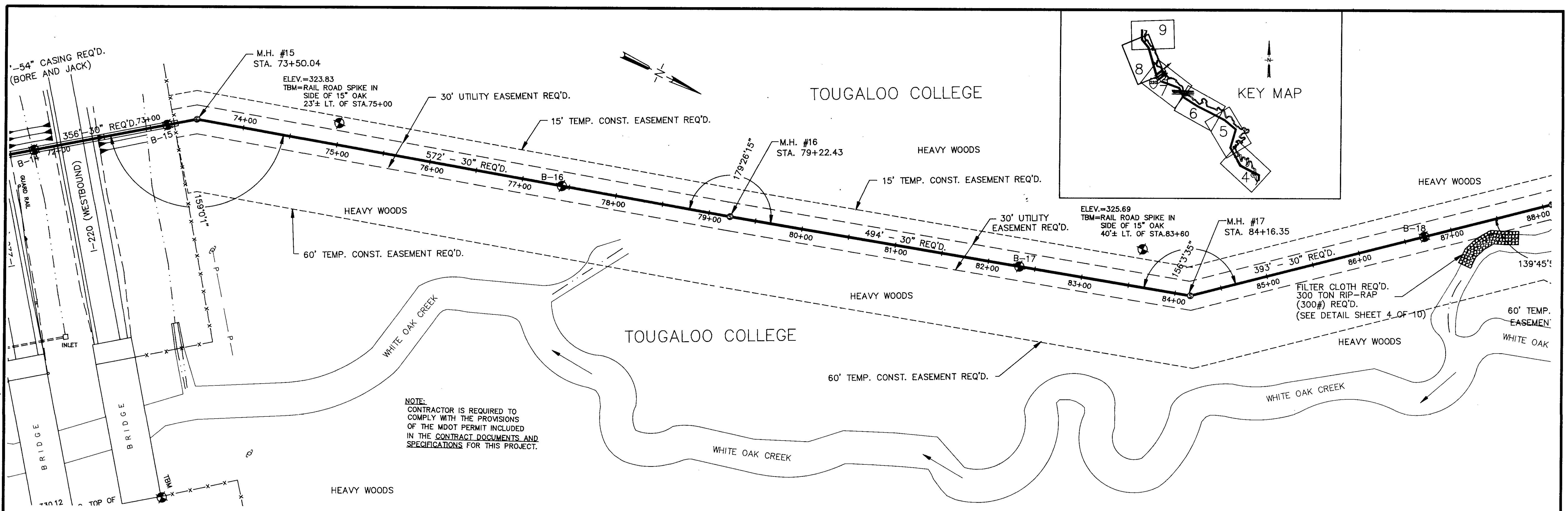
DESIGNED T.C.	DATE 2-14-94	WAGONER ENGINEERING INC. CONSULTING ENGINEERS JACKSON, MISSISSIPPI	CITY OF JACKSON WHITE OAK CREEK INTERCEPTOR SEWER	ACAD PATH ROUTE 92076\WHOAKSEW(PLOT2)
DRAWN C.R.H.	SCALE 1"=50' HORIZ. 1"=5' VERT.			W.E.I. JOB NO. 92076
NO.	DATE	BY	REVISIONS	

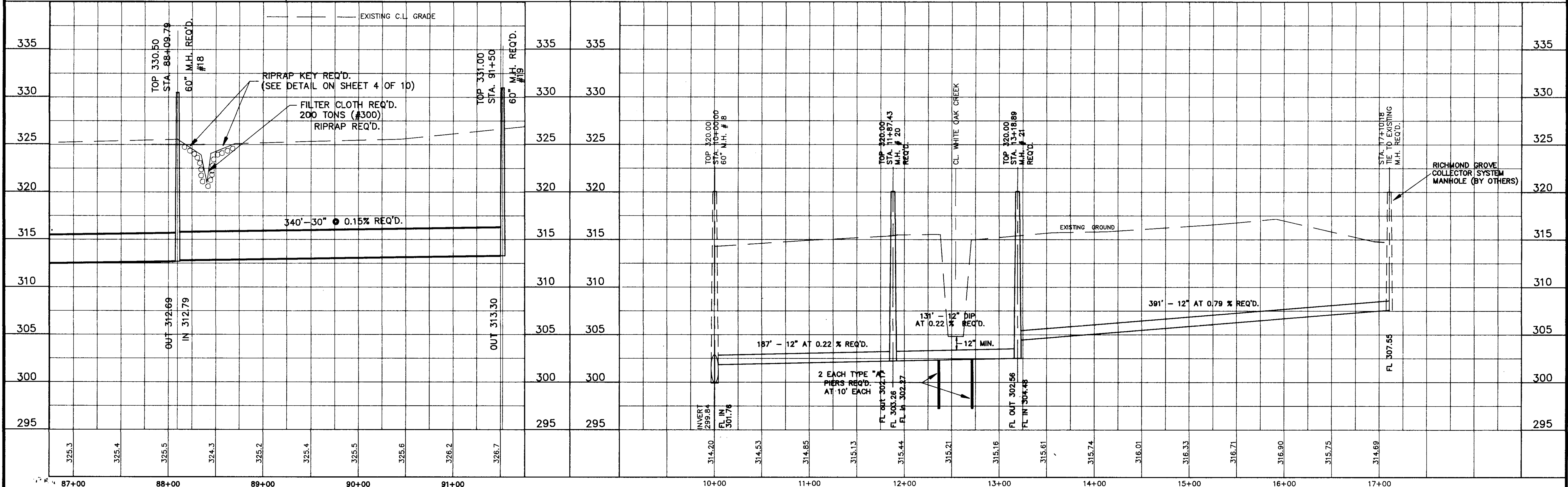
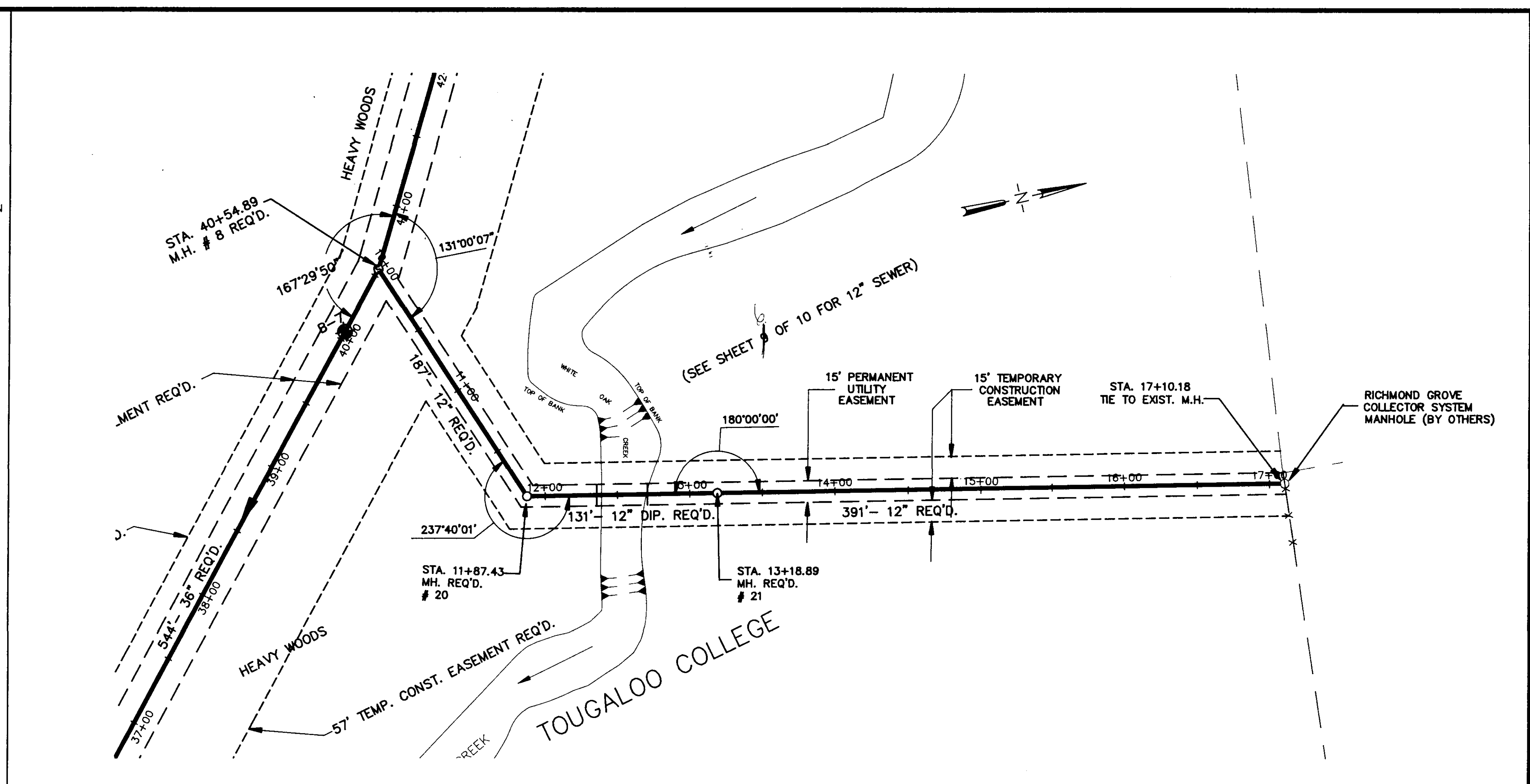
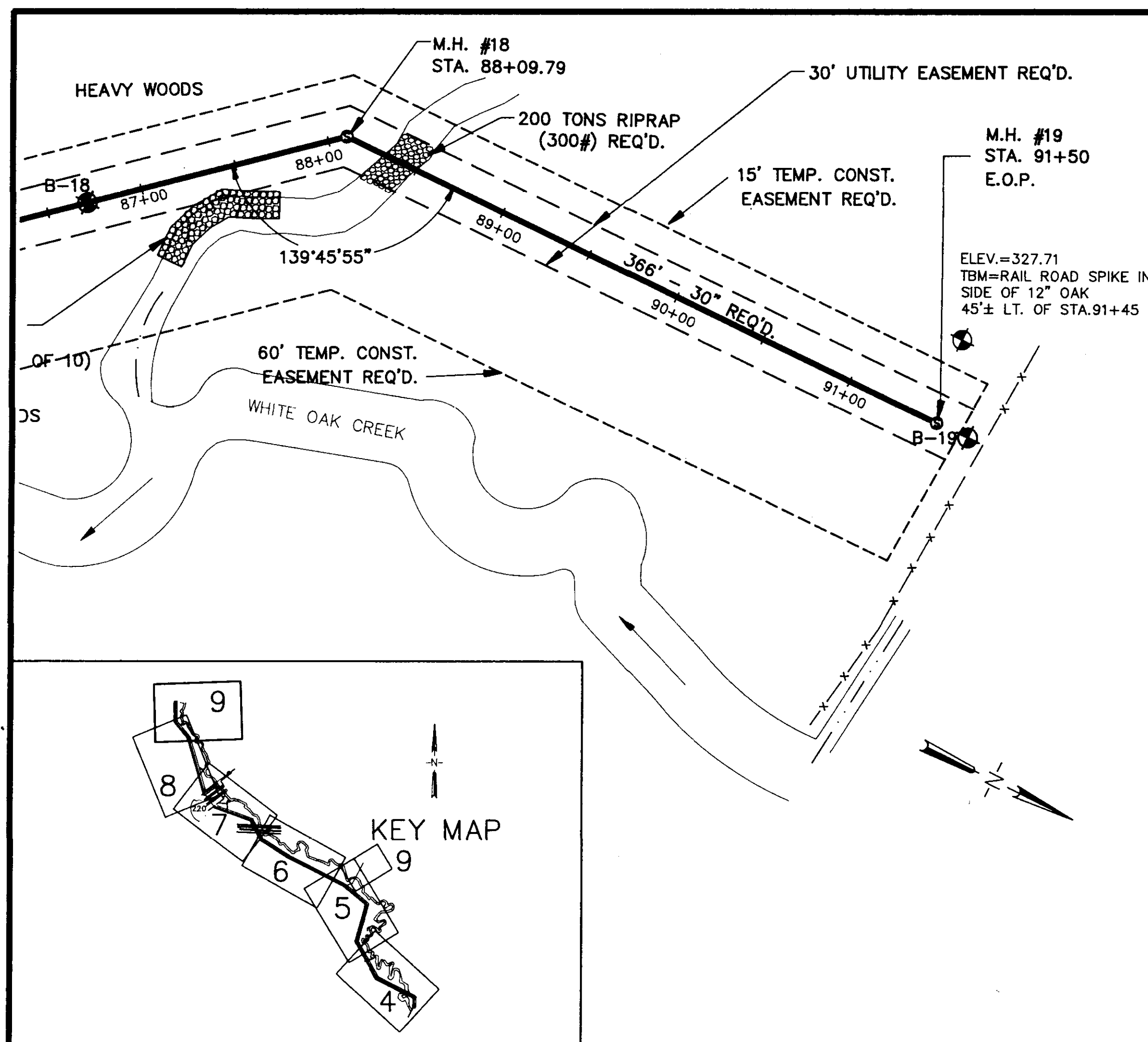


NO.	DATE	REVISIONS	BY	DESIGNED T.C.	DATE 2-14-94	SCALE 1"=50' HORT. 1"=5' VERT.	WAGGONER ENGINEERING INC. CONSULTING ENGINEERS JACKSON, MISSISSIPPI	CITY OF JACKSON WHITE OAK CREEK INTERCEPTOR SEWER	ACAD PATH ROUTE 92076\WHOAKSEW(PLOT3)	W.E.I. JOB NO. 92076	SHEET NO. 6 OF 10
-----	------	-----------	----	------------------	-----------------	--------------------------------------	--	--	--	-------------------------	----------------------



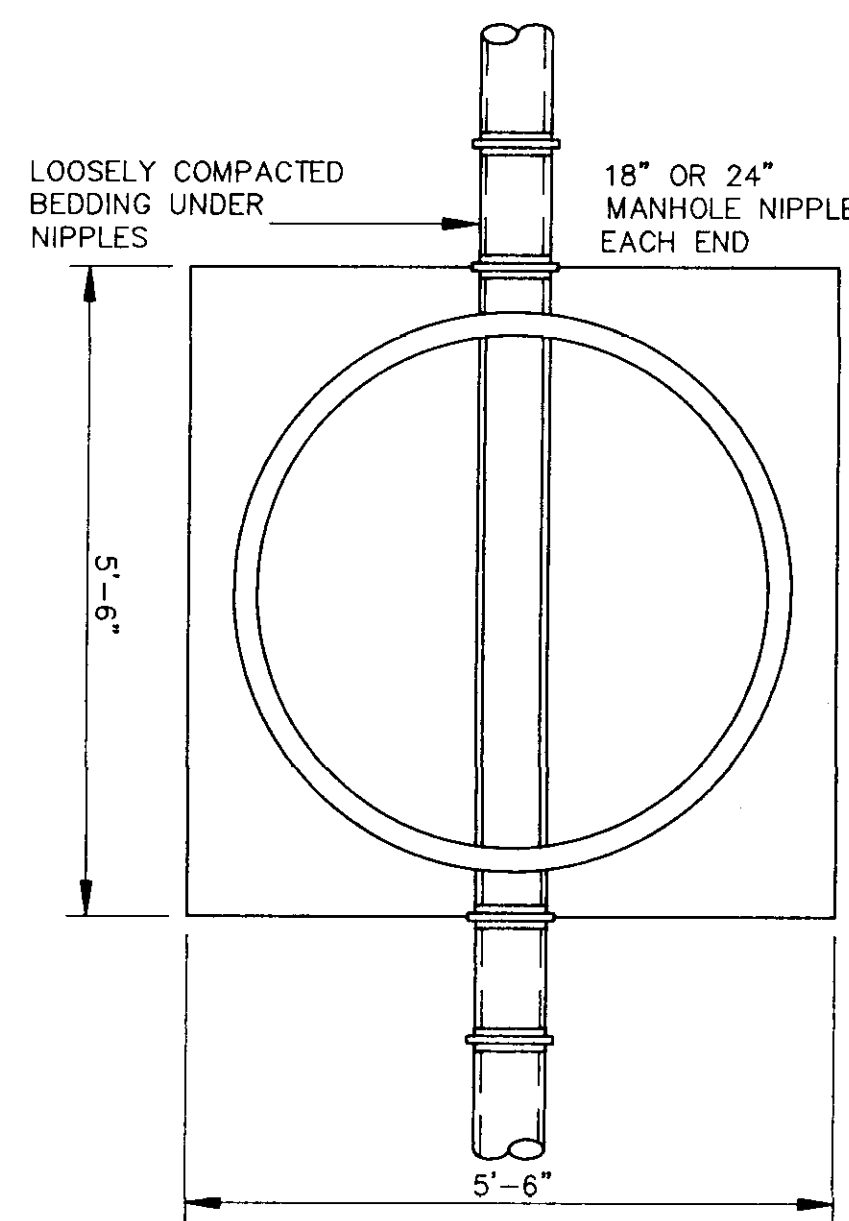
DESIGNED T.C.	DATE 2-14-94	WAGGONER ENGINEERING INC. CONSULTING ENGINEERS JACKSON, MISSISSIPPI	CITY OF JACKSON WHITE OAK CREEK INTERCEPTOR SEWER	ACAD PATH ROUTE 92076/WHOAKSEW(PLOT4) W.E.I. JOB NO. 92076 SHEET NO. 7 OF 10
DRAWN C.R.H.	SCALE 1"=50' HORT. 1"=5' VERT.			
NO.	DATE	BY	REVISIONS	





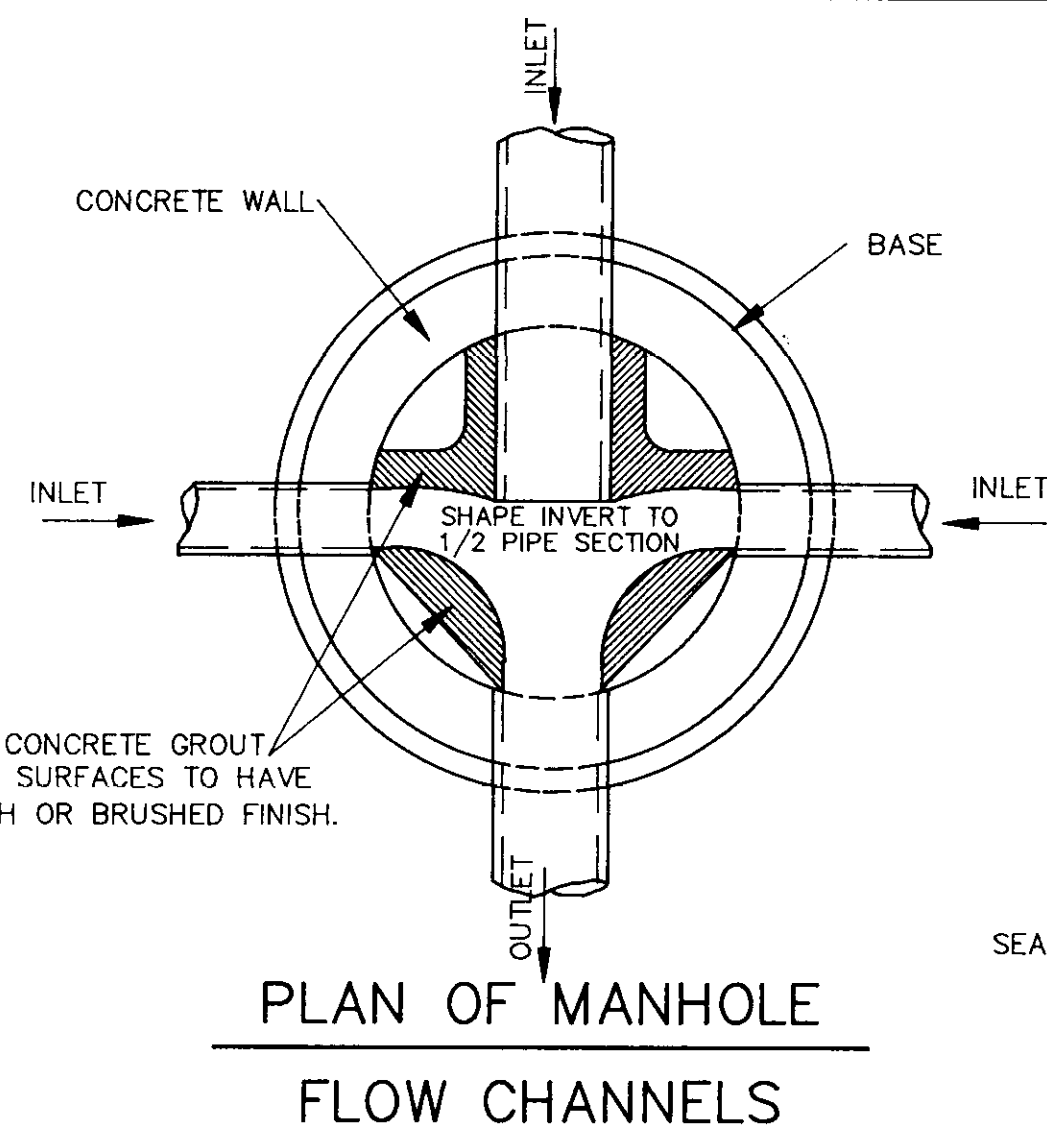
DESIGNED T.C.	DATE 2-14-94	WAGGONER ENGINEERING INC. CONSULTING ENGINEERS JACKSON, MISSISSIPPI	CITY OF JACKSON WHITE OAK CREEK INTERCEPTOR SEWER	ACAD PATH ROUTE 92076 WHOAKSEW(PLOT6)	W.E.I. JOB NO. 92076	SHEET NO. 9 OF 10
DRAWN C.R.H.	SCALE 1"=50' HORZ. 1"=5' VERT.					

NO.	DATE	REVISIONS	BY

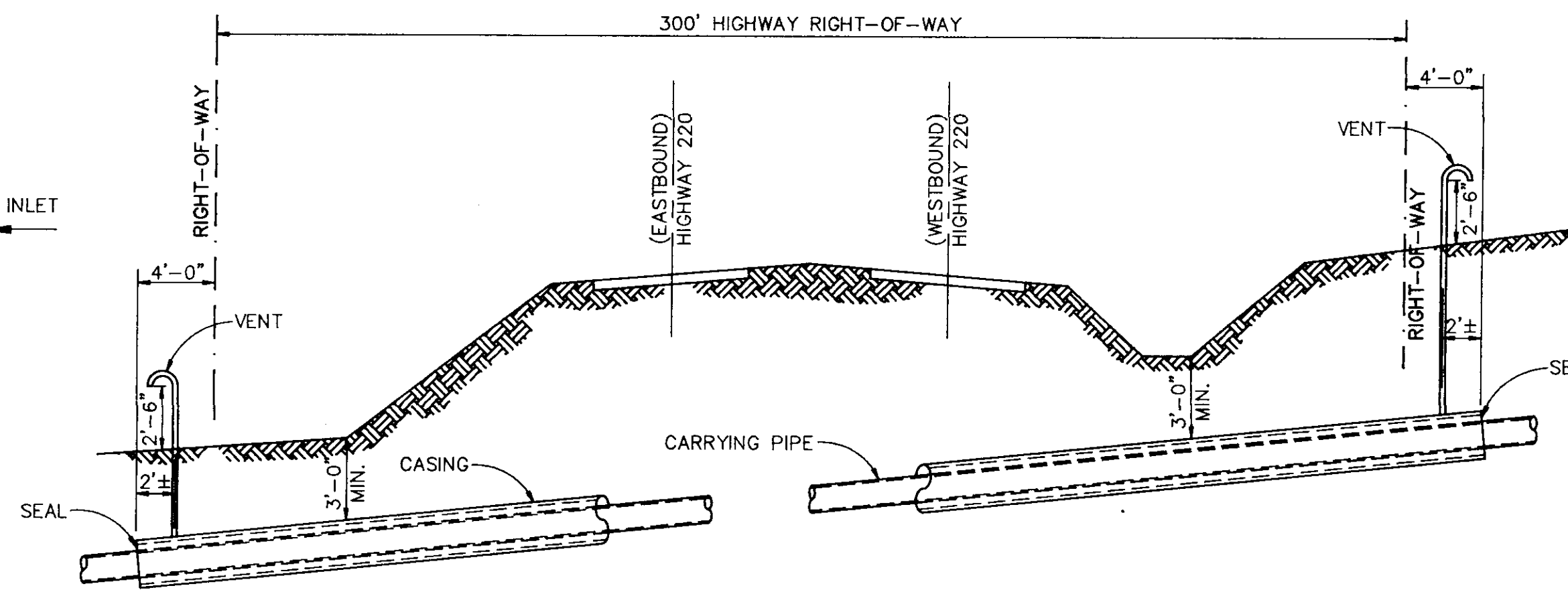


- NOTE:
- DO NOT POUR ADDITIONAL CONCRETE ON OR BEYOND M.H. NIPPLE.
 - USE A MINIMUM OF 1 NIPPLE AT EACH ENTRANCE TO M.H.
 - PIPE OPENING IN PRE-CAST CONCRETE UNITS SHALL BE EQUAL TO O.D. OF PIPE PLUS 6".
 - DO NOT USE BRICK, BLOCK OR TIMBER TO SUPPORT PIPE OR NIPPLES OUTSIDE OF MANHOLE.

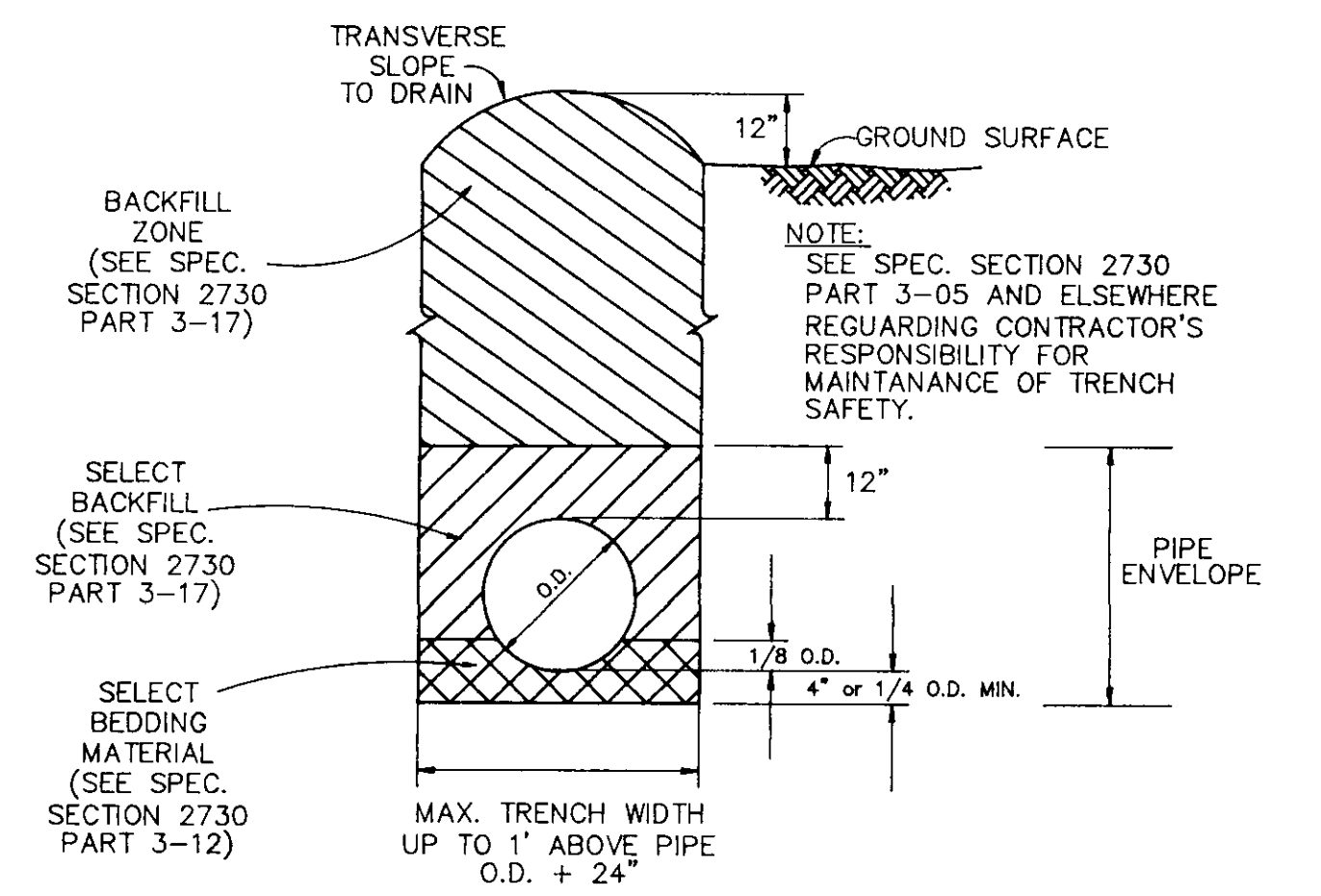
TYPICAL PIPE CONNECTION TO MANHOLE



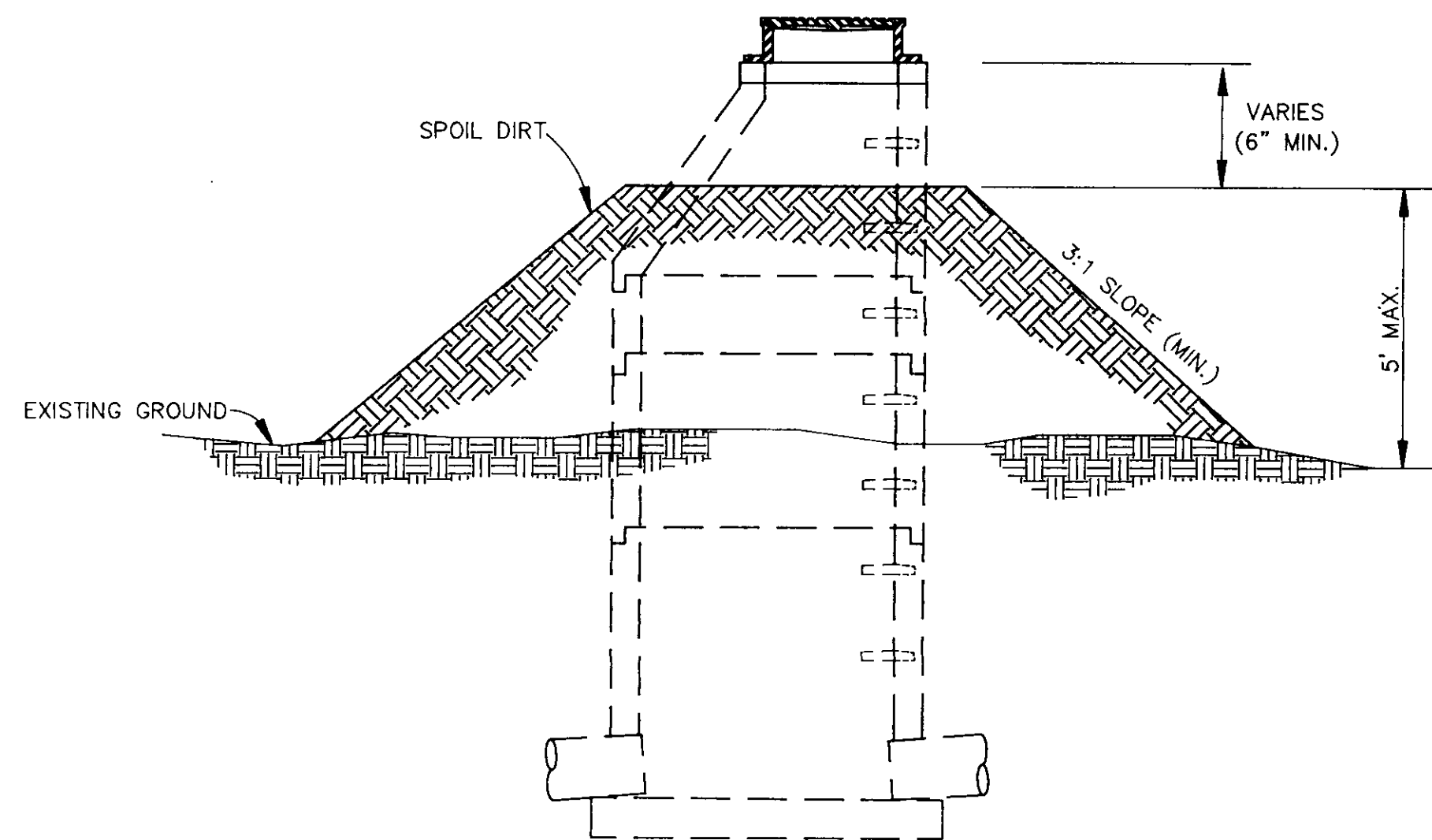
PLAN OF MANHOLE FLOW CHANNELS



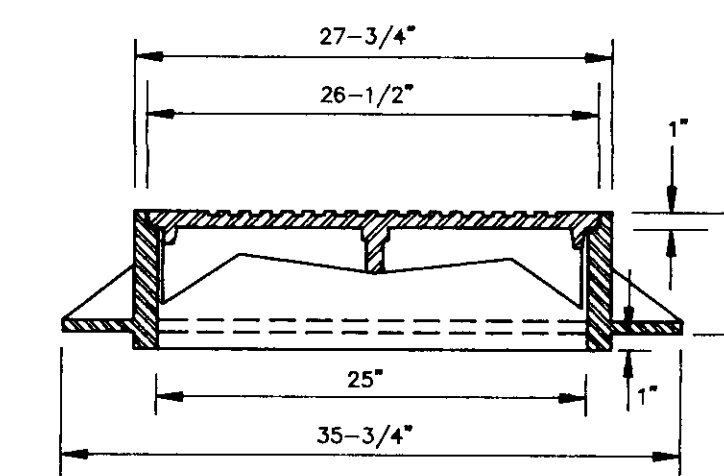
HIGHWAY CROSSING DETAIL



STANDARD BEDDING DETAIL - CLASS "C"



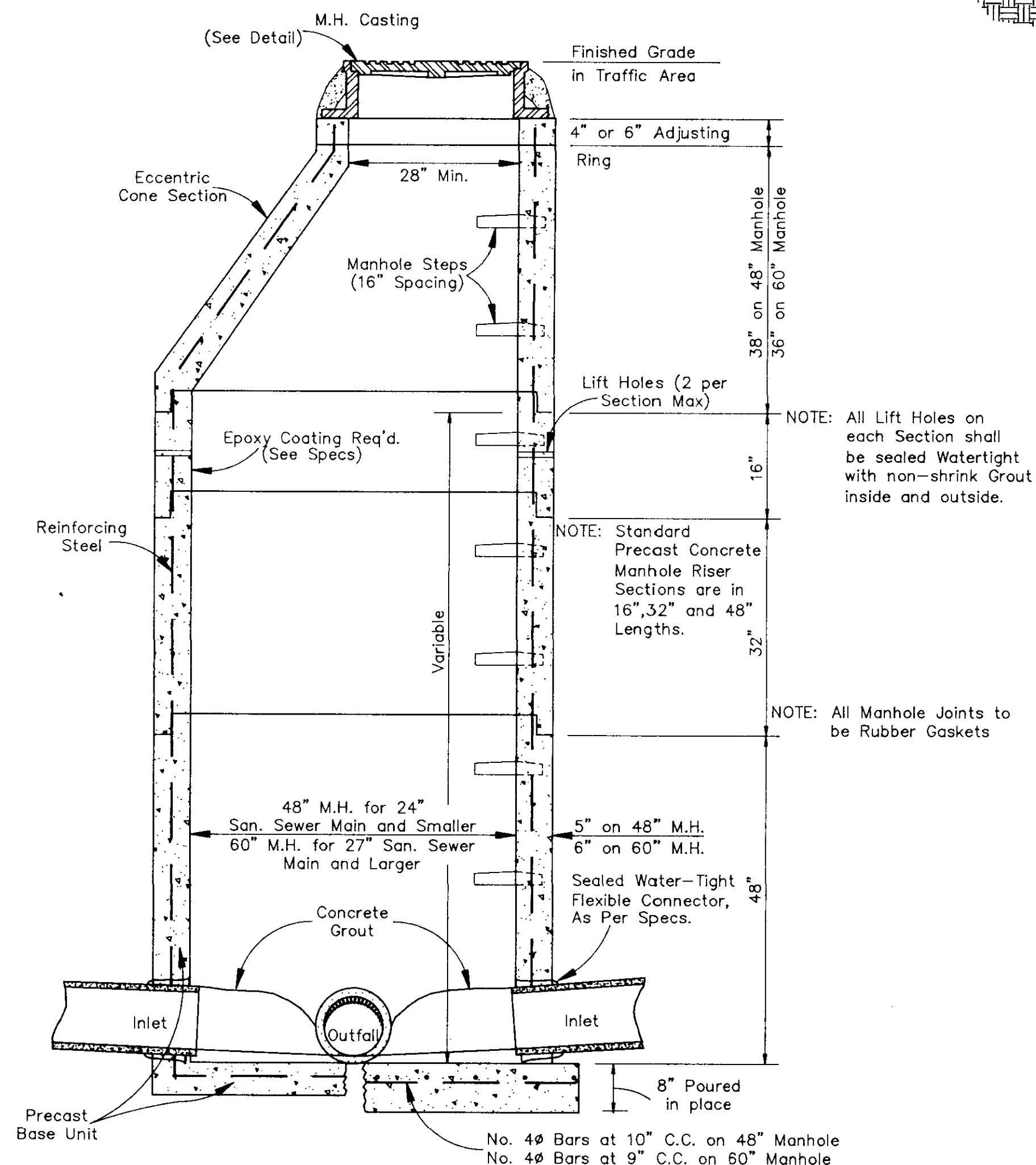
DETAIL OF SPOIL DIRT PLACEMENT AROUND MANHOLES



SECTION STANDARD MANHOLE CASTING



PLAN STANDARD MANHOLE CASTING V-1115 Cover Face



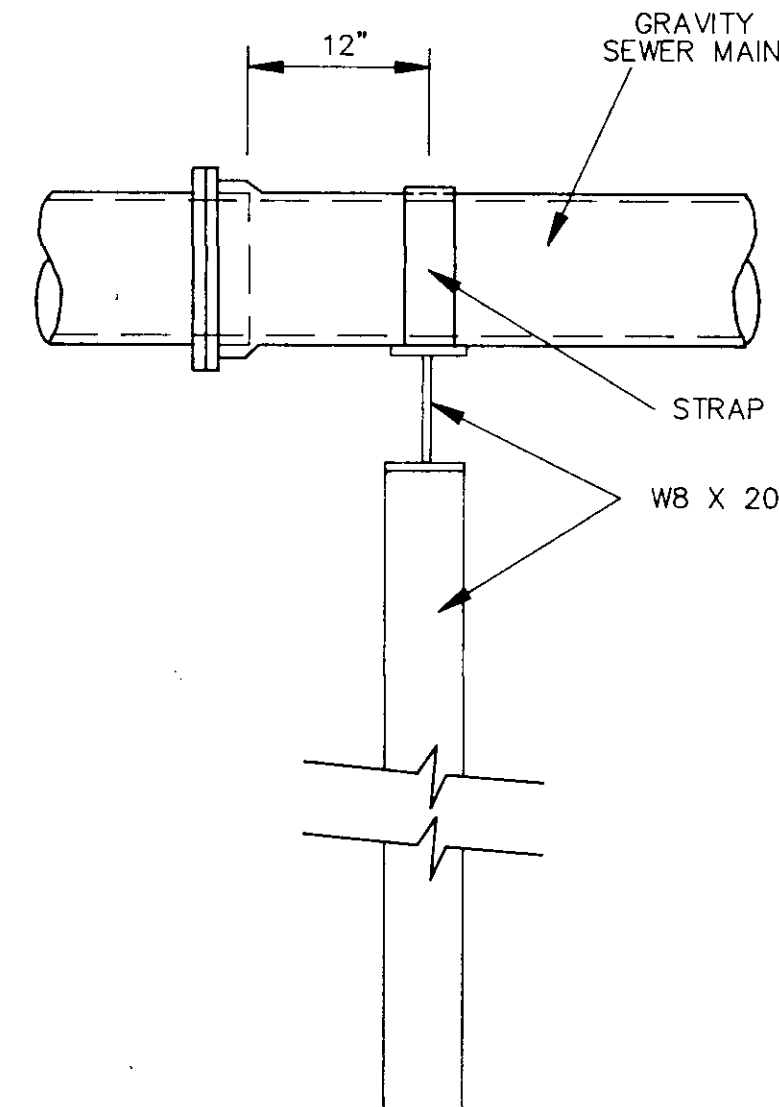
SECTION PRECAST CONCRETE MANHOLE

NOTE: All Lift Holes on each Section shall be sealed Watertight with non-shrink Grout inside and outside.

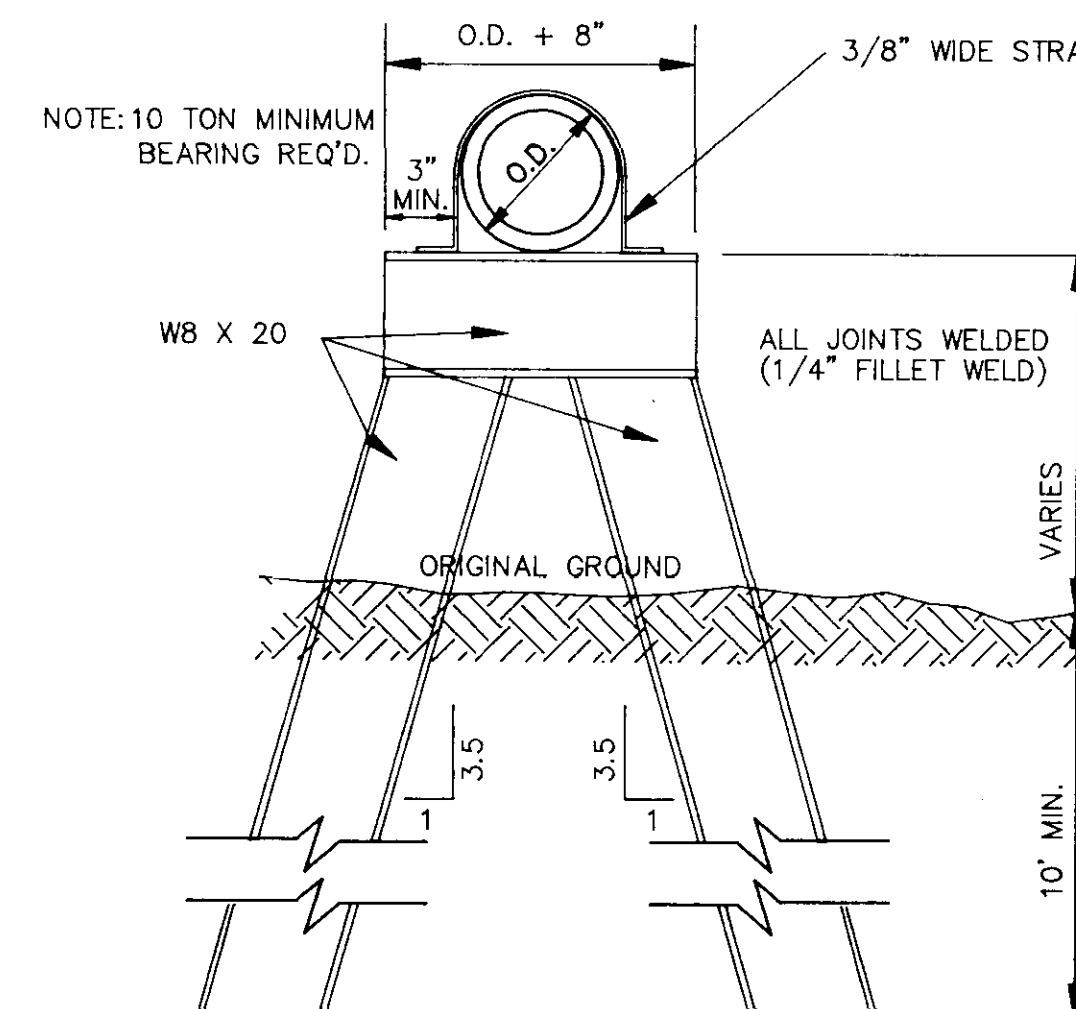
NOTE: Standard Precast Concrete Manhole Riser Sections are in 16", 32" and 48" Lengths.

NOTE: All Manhole Joints to be Rubber Gaskets

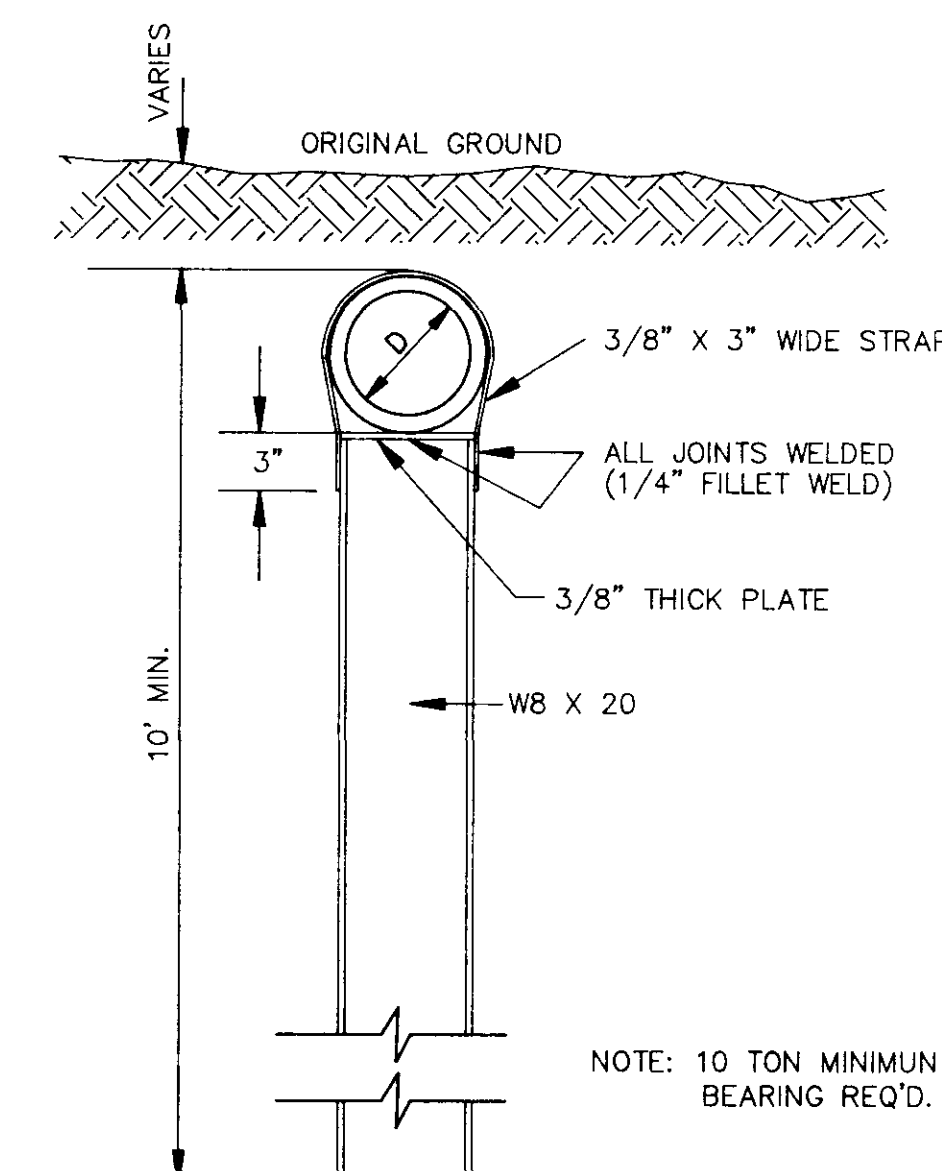
No. 4 Bars at 10" C.C. on 48" Manhole
No. 4 Bars at 9" C.C. on 60" Manhole



SIDE ELEVATION TYPE "B" PIER



DETAIL TYPE "B" PIER



DETAIL TYPE "A" PIER

NOTE: 10 TON MINIMUM BEARING REQ'D.

CITY OF JACKSON, MISSISSIPPI			
WHITE OAK CREEK INTERCEPTOR			
SANITARY SEWER STANDARD DETAILS			
WAGGONER ENGINEERING, INC. Consulting Engineers - Jackson, Mississippi			
REVISION: ADDED THE ENVELOPE AT BEDDING DETAIL (2-14-94)	REVISION: ADDED TYPE "A" PIER AND WATER TIGHT MANHOLES COVER DET. (9-10-94)	REVISION: ADDED DETAIL FOR SPOIL DIRT PLACEMENT AROUND MANHOLES (10-18-93)	REVISION: ADDED DETAIL FOR SPOIL DIRT PLACEMENT AROUND MANHOLES (10-18-93)
DRAWN BY: C.S.	DATE: 2-14-94	SCALE: AS SHOWN	SHEET NUMBER: 10 OF 10

