

CONSTRUCTION PLANS FOR DOUBLETREE CIRCLE AND EXTENSIONS TO WATER AND SANITARY SEWER SYSTEMS ALONG WILLIAM BOULEVARD CITY OF RIDGELAND MADISON COUNTY, MISSISSIPPI

RECAPITULATION OF QUANTITIES GRADING, DRAINAGE AND PAVING

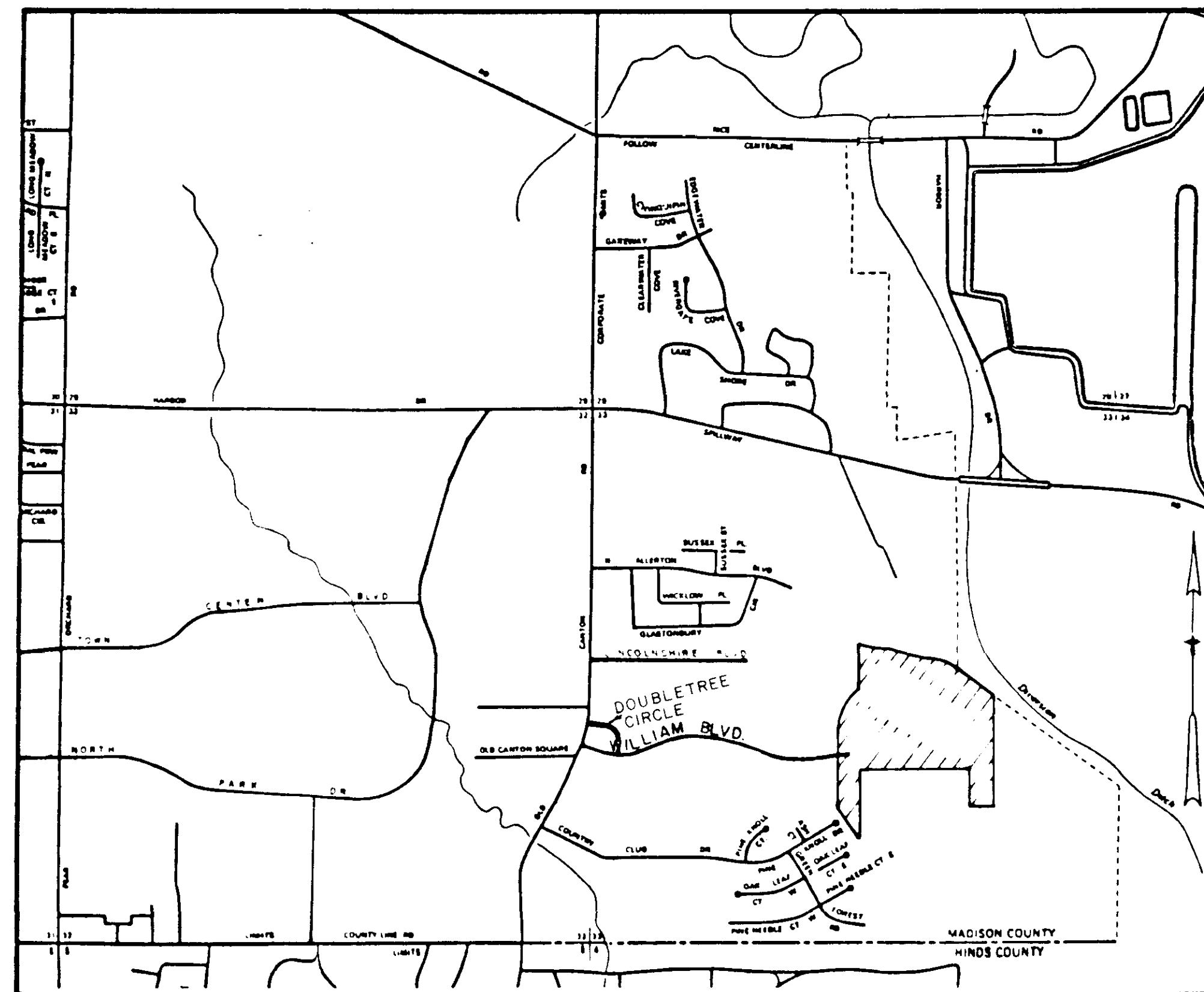
Item No.	Item	Unit	Quantity
S-203-A1 S-214	Unclassified Excavation (P.M.) Seeding, Including Ground Preparation: 600# per Ac. 13-13-13 Com. Fert.: 1 Ton/Ac. Agricultural Limestone, 2 Tons/Ac. Vegetative Material with Asphalt (150 Gal/Ton) for Mulching	C.Y.	3,545
S-630-1	Reflectorized Warning "Stop" Sign	Ac.	0.66
S-630-9	Street Name Signs	Ea.	2
S-603-C-A-1B	18" Reinforced Concrete Pipe	Ea.	2
S-603-C-B-1B	18" Reinforced Concrete End Section	L.F.	132
S-604-C	Standard Curb Inlet (5')	Ea.	2
S-301-B(6")	6" Hot Bituminous Pavement Base Course (Type BB-1) (P.M.)	Ea.	6
S-403-C	1 1/2" Hot Bituminous Pavement Surface (Type SC-1) (P.M.)	S.Y.	2,850
S-408-A	Cut-back Asphalt for Frise Coat (0.33 gal/S.Y.) (P.M.)	Gal.	941
S-609-D	Combination Curb & Gutter (24") (P.M.)	L.F.	1,606

WATER DISTRIBUTION

Item No.	Item	Unit	Quantity
WD-1	8" P.V.C. (C-900) (Class 150) Water Line (P.M.)	L.F.	1,290
WD-2	Tapping Sleeve & Related Materials or Fittings for Connection to 8" Existing Water Line	Ea.	1
WD-3	8" Gate Valve with Valve Box	Ea.	3
WD-4	8" x 8" x 8" Cast Iron Tee	Ea.	1
WD-5	3-way Improved Traffic Type Fire Hydrant Assembly Including Tee From Main Line, Valve Where Needed and 6" P.V.C. (C-900) (Class 150) Water Line as Needed From Main to Hydrant	Ea.	1

SANITARY SEWER

Item No.	Item	Unit	Quantity
SS-1	Connection to Existing Sanitary Sewer Manhole	Ea.	1
SS-2	Standard Manhole (U-B')	Ea.	2
SS-3	8" Sanitary Sewer Pipe (P.M.)	L.F.	625



LOCATION MAP

A DEVELOPMENT OF DOUBLETREE

OWNERS:

DENNIS M. FORD & WILLIAM W. FORD III
 727 NORTH PRESIDENT STREET - JACKSON, MISSISSIPPI

PREPARED BY:

GUEST ENGINEERING, INC.
 CONSULTING ENGINEERS - SURVEYORS
 5250 Galaxie Dr. • P.O. Box 16545 • Jackson, MS 39236
 Telephone (601) 981-2759

1988

Revised 6-1-88

INDEX TO DRAWINGS

Title	Sheet
COVER	1
GENERAL LAYOUT	2
PLAN PROFILE DOUBLETREE CIRCLE	3
PLAN PROFILE WATER & SEWER ALONG WILLIAM BOULEVARD	4
STANDARD WATER DETAILS	ST W 1
STANDARD SANITARY SEWER DETAILS	ST SS 2
STANDARD STORM SEWER & STREET DETAILS	ST SSS 3

Technical specifications for street and storm sewer construction for this project shall be the Construction Details (Technical Specifications) of the Mississippi Standard Specifications for State Aid Road and Bridge Construction, 1982 Edition.

Equipment, Materials and Construction of Water Distribution System and Sanitary Sewer System shall conform to Utility and Street Construction for Doubletree Circle and Extensions to Water & San. Sewer Along William Blvd. A separate Bound Set of Specifications by Guest Engineering, Inc. for the Construction of Utility and Street Construction for Doubletree Circle and Extensions to Water & Sanitary Sewer Along William Boulevard.

The quantities of all pay items listed in the Recapitulations of quantities which are designated (Plan Measure) or (P.M.) are calculated based on the lines, dimensions, thicknesses, grades, slopes, sections or quantities as shown on the original plans. The quantities computed, and shown on the original plans will be the measurement for final payment.

If during construction, however, the Engineer finds it necessary to change the lines, dimensions, thicknesses, grades, slopes, sections or quantities or if such changes are ordered for any other reason, the final quantities will be recomputed based on the plan changes, as a result of authorized changes.

PWP-05006

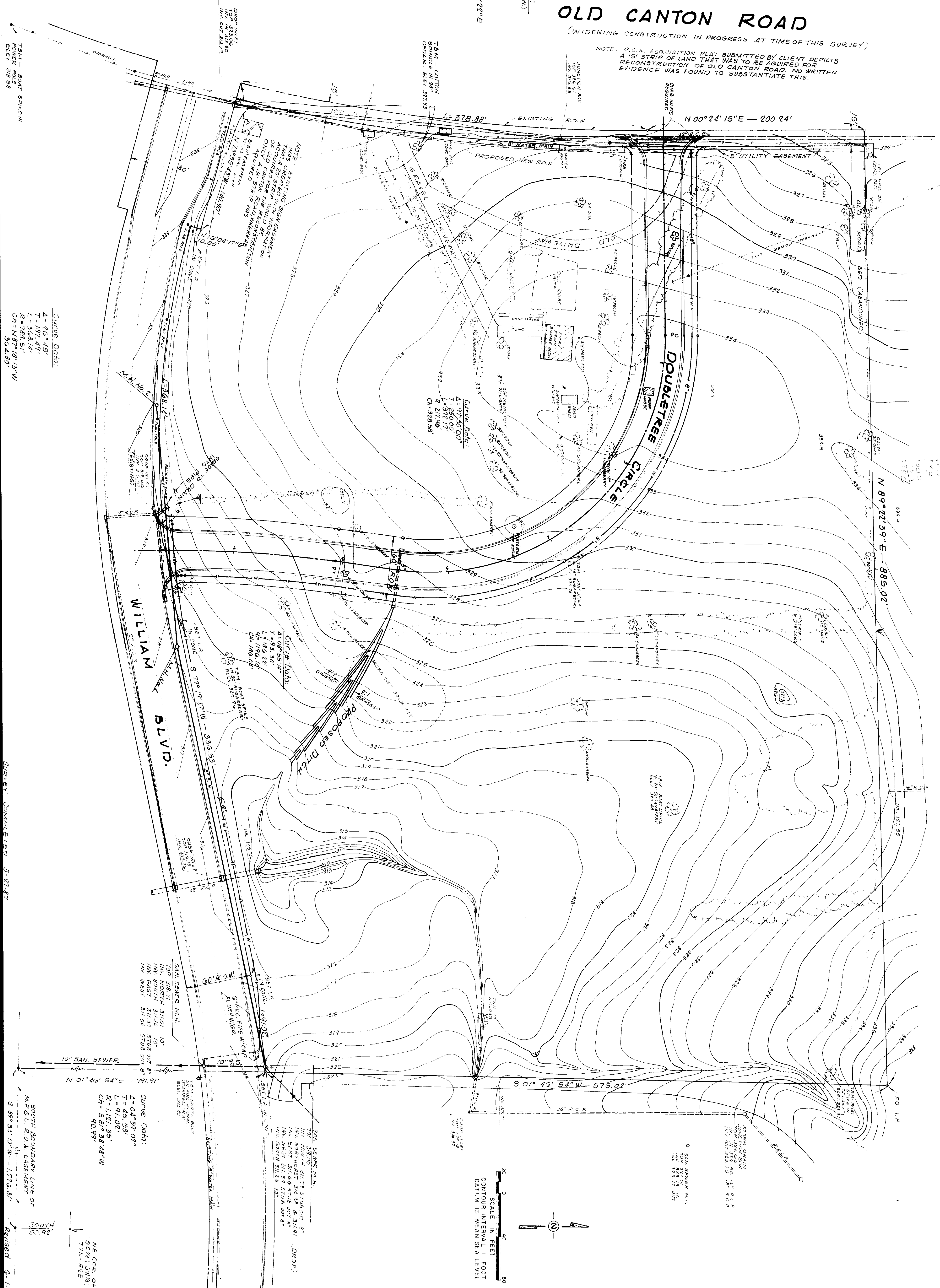
William Blvd. Extensions

OLD CANTON ROAD

(WIDENING CONSTRUCTION IN PROGRESS AT TIME OF THIS SURVEY)

NOTE: R.O.W. ACQUISITION PLAT SUBMITTED BY CLIENT DEPICTS A 15' STRIP OF LAND THAT WAS TO BE ACQUIRED FOR RECONSTRUCTION OF OLD CANTON ROAD. NO WRITTEN EVIDENCE WAS FOUND TO SUBSTANTIATE THIS.

Curve Data:
 (EXISTING R.O.W.)
 Δ = 149°10'10"
 T = 190.41'
 L = 378.88'
 R = 1,531.86'
 CH = N 07° 29' 02" E
 377.92'

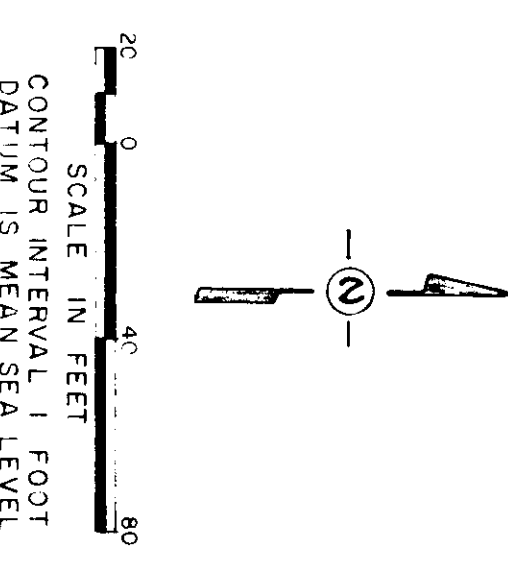


Curve Data:
 Δ = 26° 49'
 T = 187.49'
 L = 398.14'
 R = 788.51'
 CH = N 87° 18' 13" W
 304.80'

Curve Data:
 Δ = 97° 50' 00"
 T = 839.07'
 L = 2,177.96'
 R = 3,328.58'
 CH = 328.58'

Curve Data:
 Δ = 04° 39' 02"
 T = 49.59'
 L = 91.00'
 R = 1,071.95'
 CH = S 87° 28' 48" W
 90.99'

NE COR. OF SE 1/4, SW 1/4, SEC 89, T7N - R2E
 DATE 3-27-88
 SHEET 2 OF 7



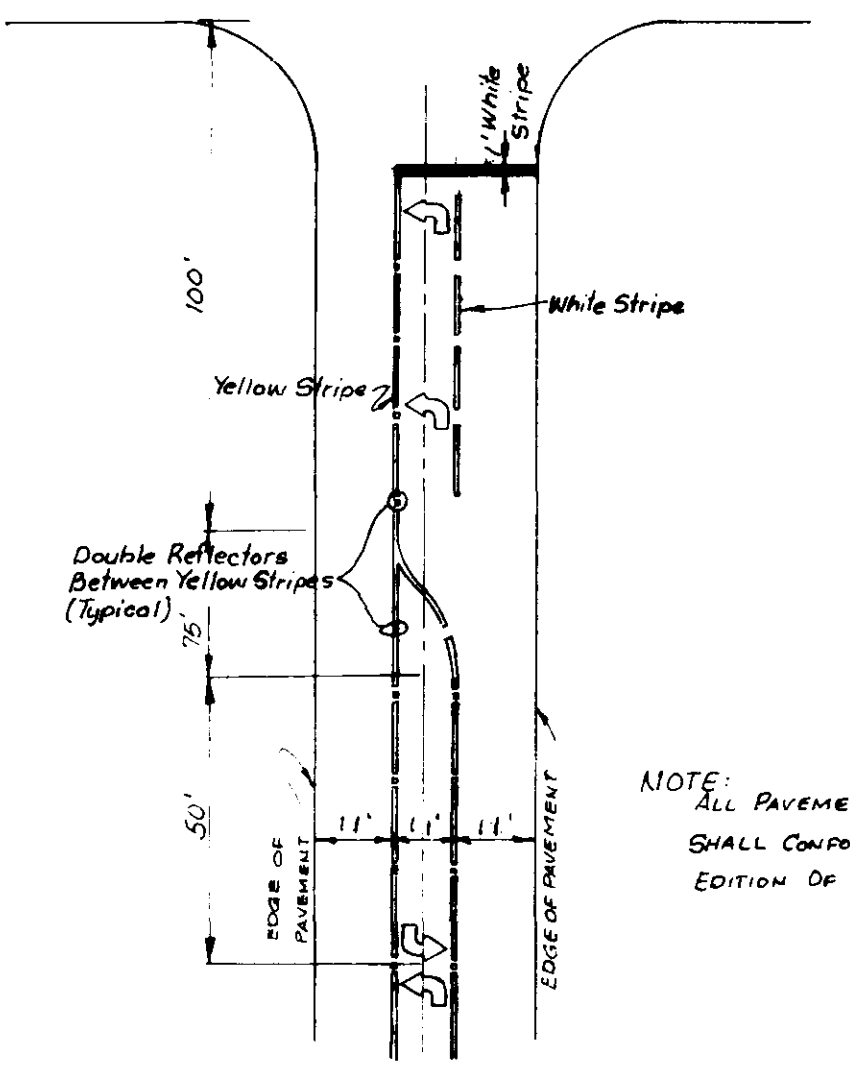
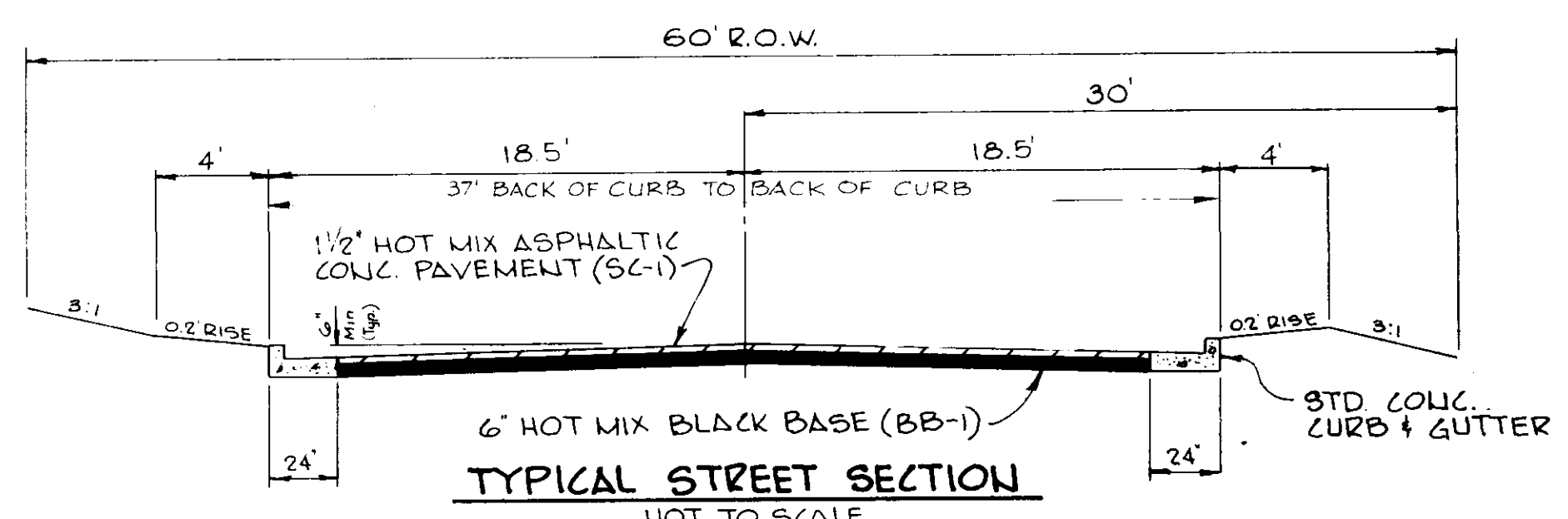
GENERAL LAYOUT

GUEST ENGINEERING, INC.
 CONSULTING ENGINEERS - SURVEYORS
 5250 Galaxie Dr. • P.O. Box 16545 • Jackson, MS 39236
 Telephone (601) 981-2759

TOPOGRAPHIC SURVEY OF TRACT II-A OF PROPOSED BUSINESS PARK SITUATED AT NORTHEAST CORNER OLD CANTON ROAD AND WILLIAM BOULEVARD CITY OF RIDGELAND, MADISON COUNTY, MISSISSIPPI

REVISIONS

△ CURVE DATA #1
 Δ: 97°50'00"
 R: 217.96'
 T: 250.00'
 L: 372.17'
△ CURVE DATA #2
 Δ: 08°59'14"
 R: 119.10'
 T: 93.30'
 L: 186.22'



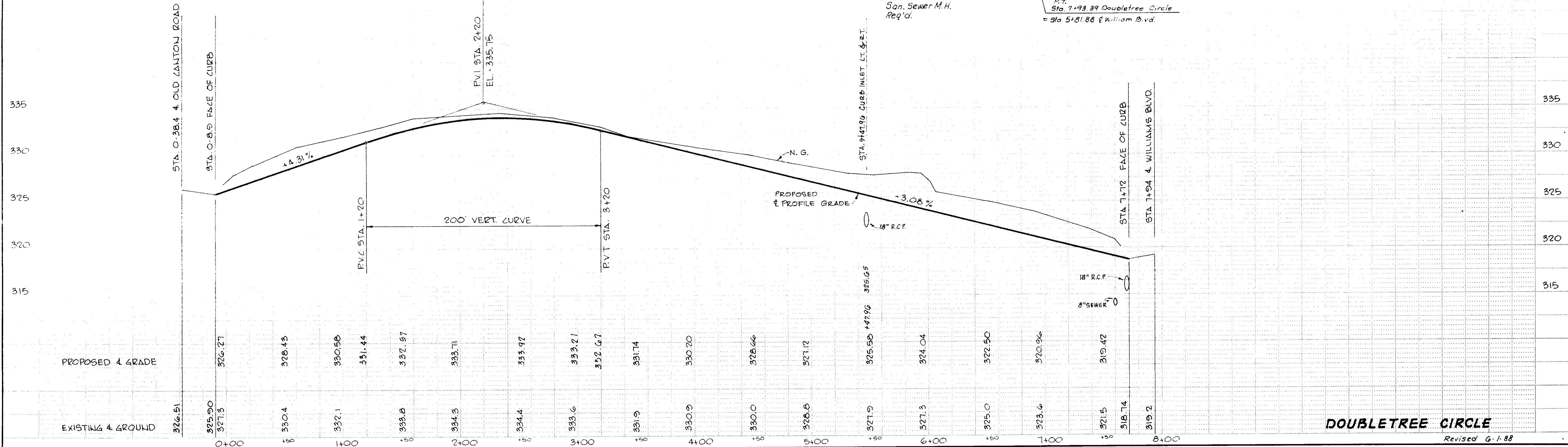
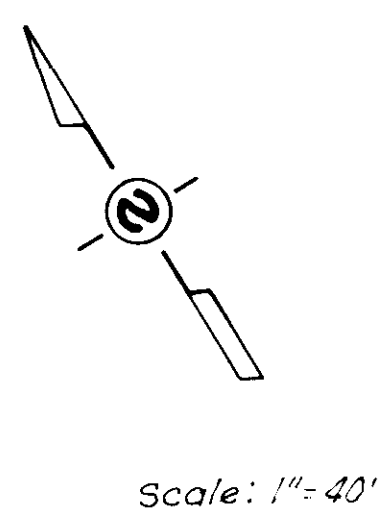
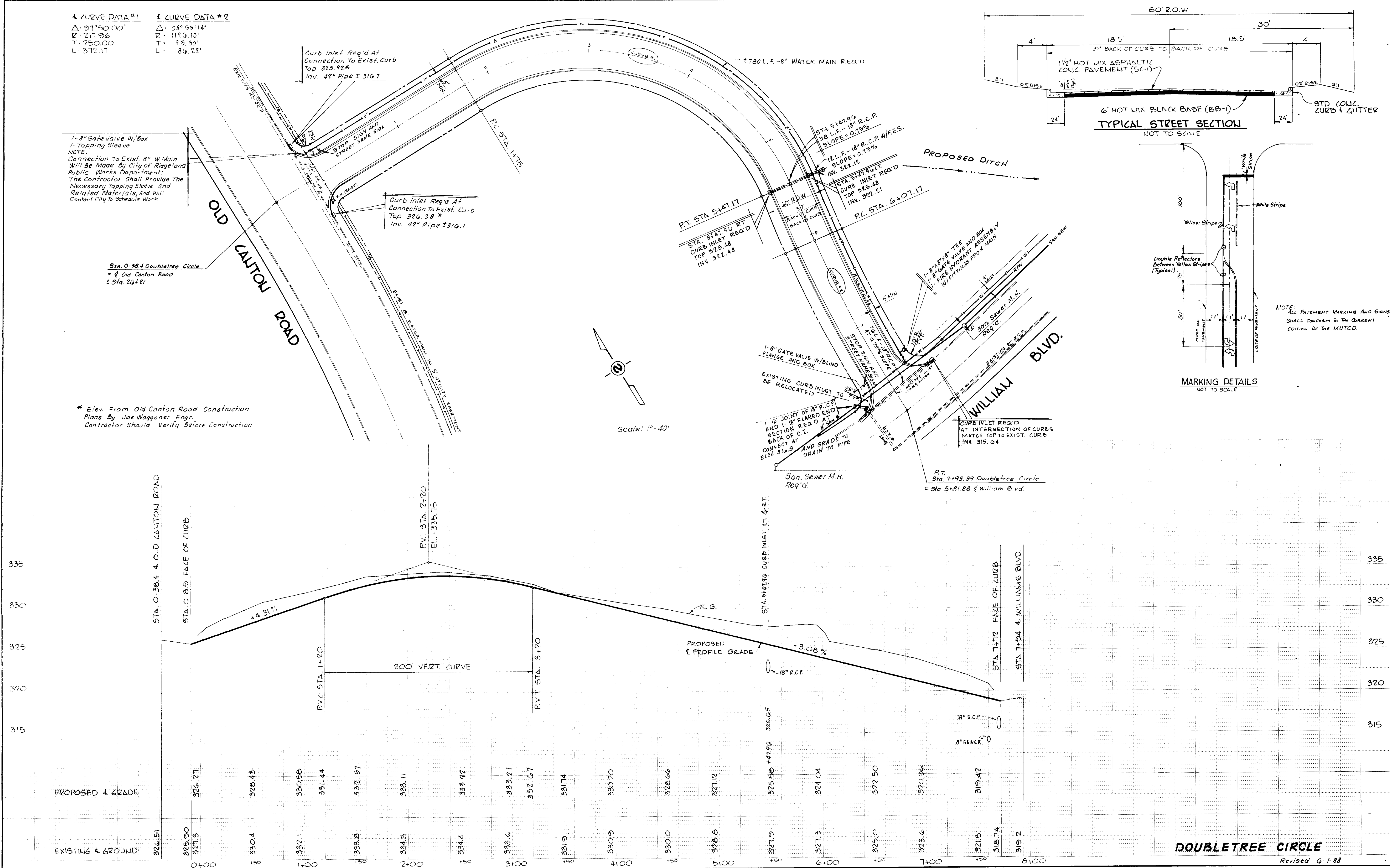
1-8" Gate Valve w/ Box
 1-Topping Sleeve
 NOTE:
 Connection To Exist. 8" W. Main
 Will Be Made By City of Ringgold
 Public Works Department.
 The Contractor Shall Provide The
 Necessary Tapping Sleeve And
 Related Materials, And Will
 Contact City To Schedule Work

STA. 0+38.4 Doubletree Circle
 = Old Canton Road
 = Sta. 20+21

* Elev. From Old Canton Road Construction
 Plans By Joe Waggoner, Engr.
 Contractor Should Verify Before Construction

DATE	
BY	
CHECKED	
NO.	
PLAN	
NO. OF SHEETS	
NO.	

DATE	
BY	
CHECKED	
NO.	
PROFILE	
NO. OF SHEETS	
NO.	

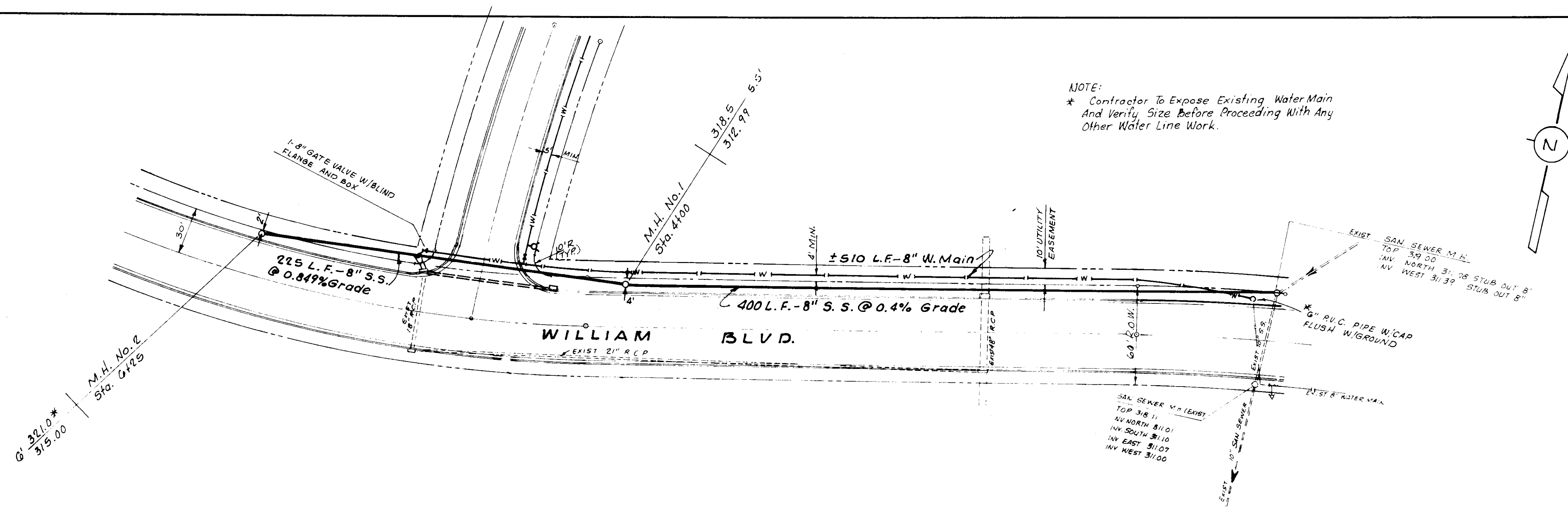


DOUBLETREE CIRCLE

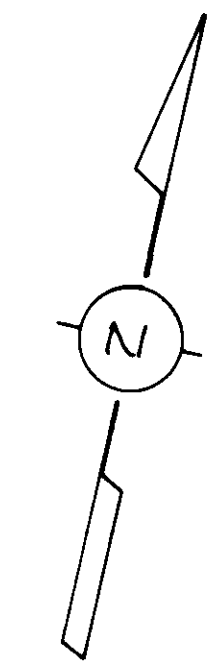
Revised 6-1-88

DATE	
BY	
SURVEYED	
ADJUSTED	
NOTED	
GRADES CHECKED	
PT. OF MAX. CHECKED	
PLAN	
NOTE BOOK	
NO.	

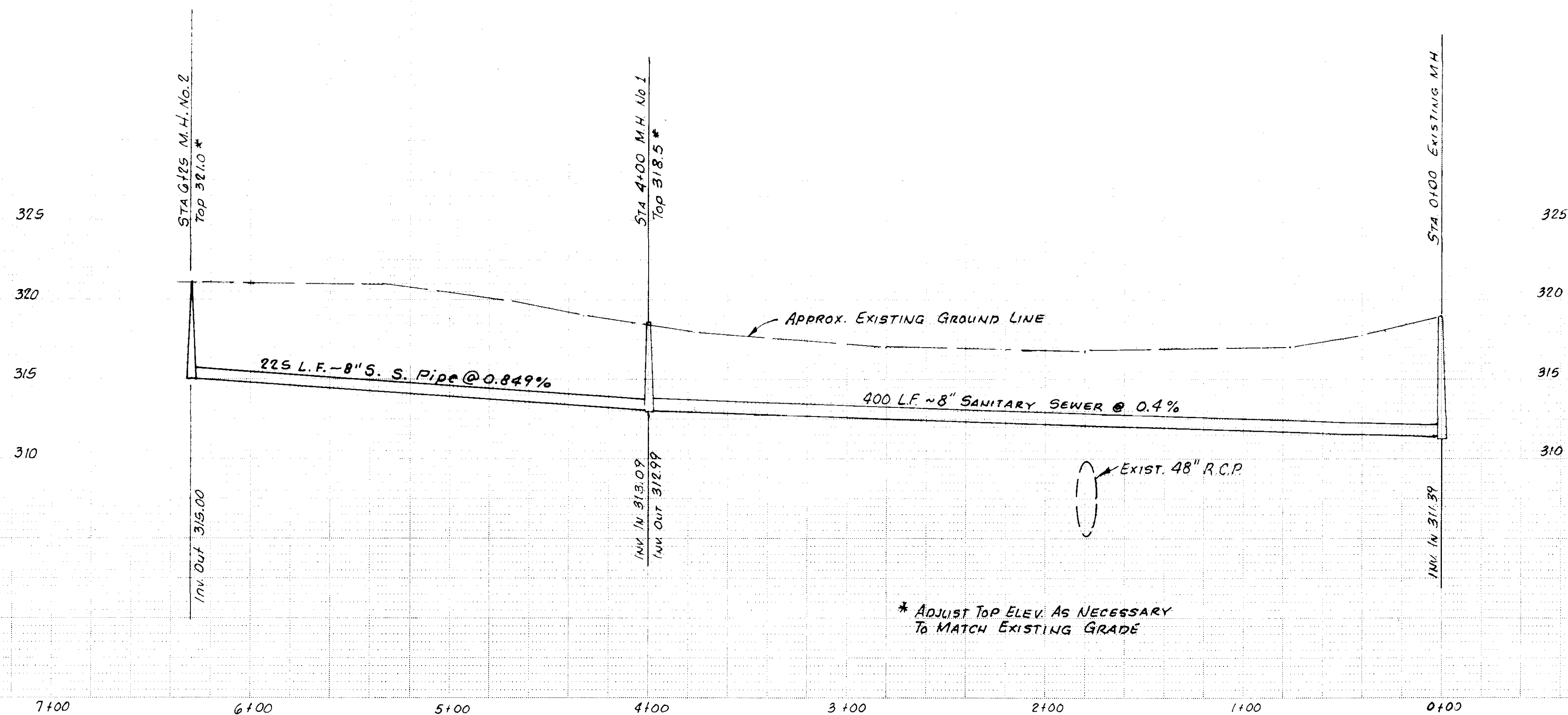
DATE	
BY	
SURVEYED	
ADJUSTED	
NOTED	
GRADES CHECKED	
B. N. 1. NOTED	
STRUCTURE NOTATIONS CHD.	
PROFILE	
NOTE BOOK	
NO.	



NOTE:
 * Contractor To Expose Existing Water Main
 And Verify Size Before Proceeding With Any
 Other Water Line Work.



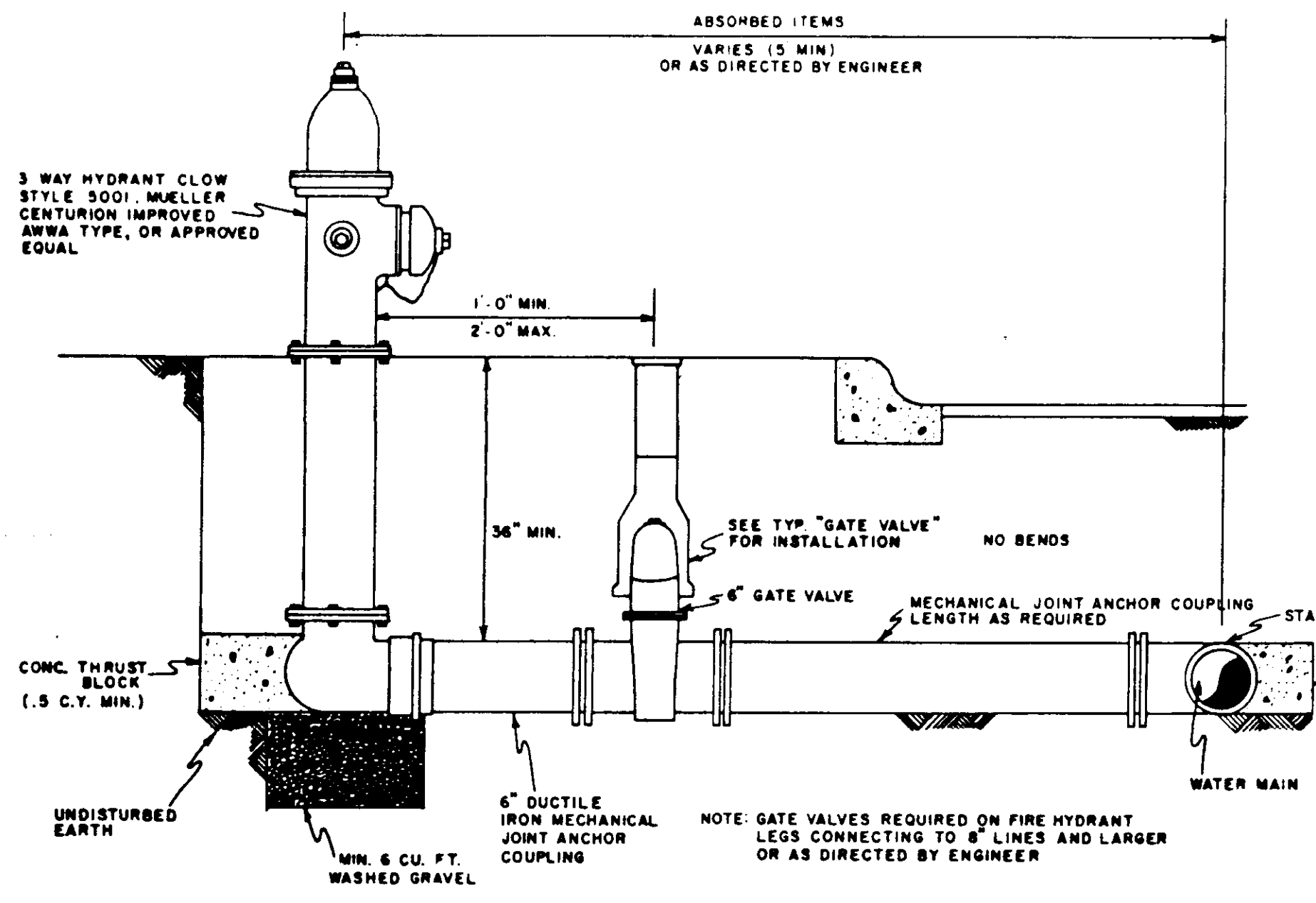
SCALES:
 HORIZONTAL: 1" = 40'-0"
 VERTICAL: 1" = 5'-0"



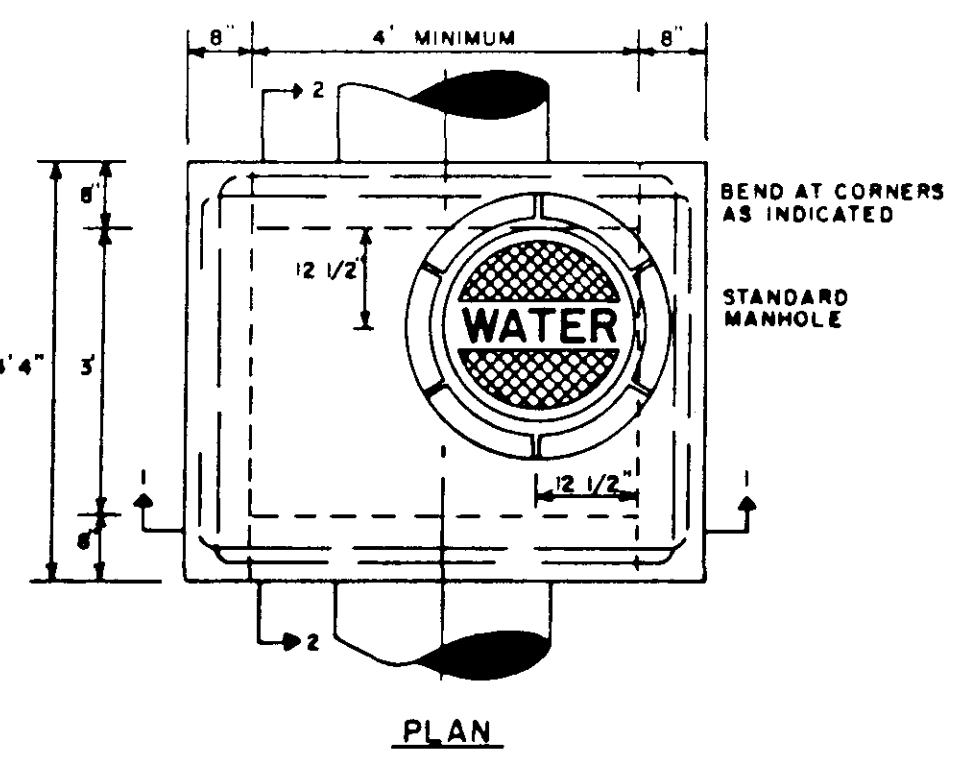
* ADJUST TOP ELEV. AS NECESSARY
 TO MATCH EXISTING GRADE

**WATER AND SANITARY SEWER LINE
 ALONG WILLIAM BLVD.**

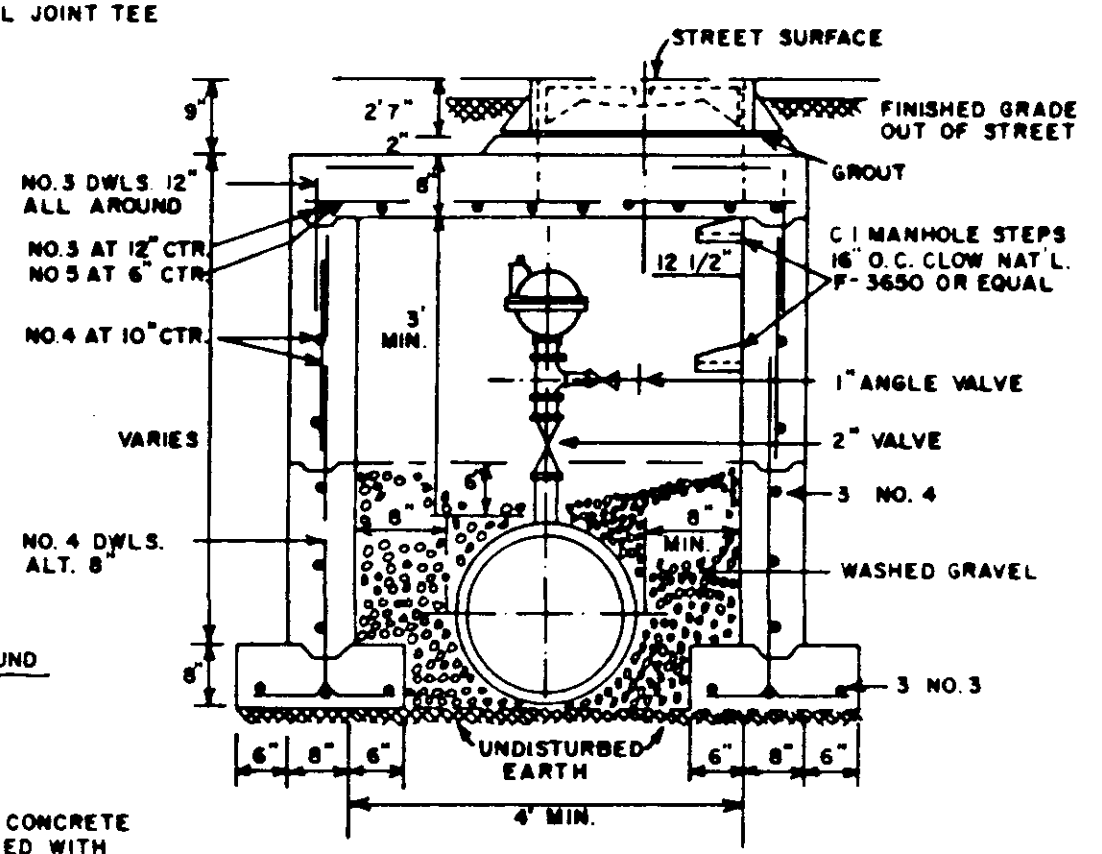
Revised 6-1-88



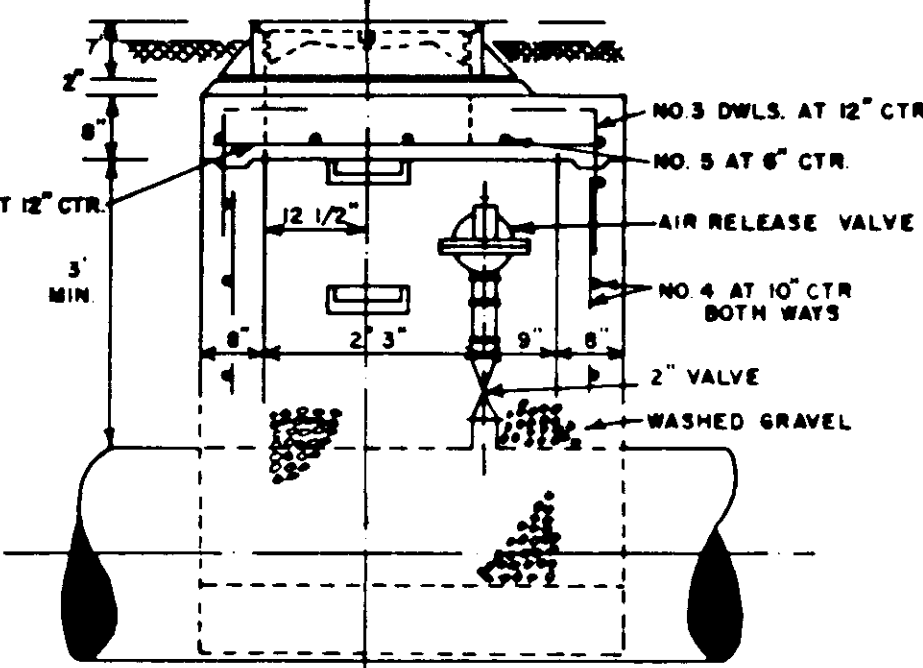
FIRE HYDRANT ASSEMBLY



PLAN

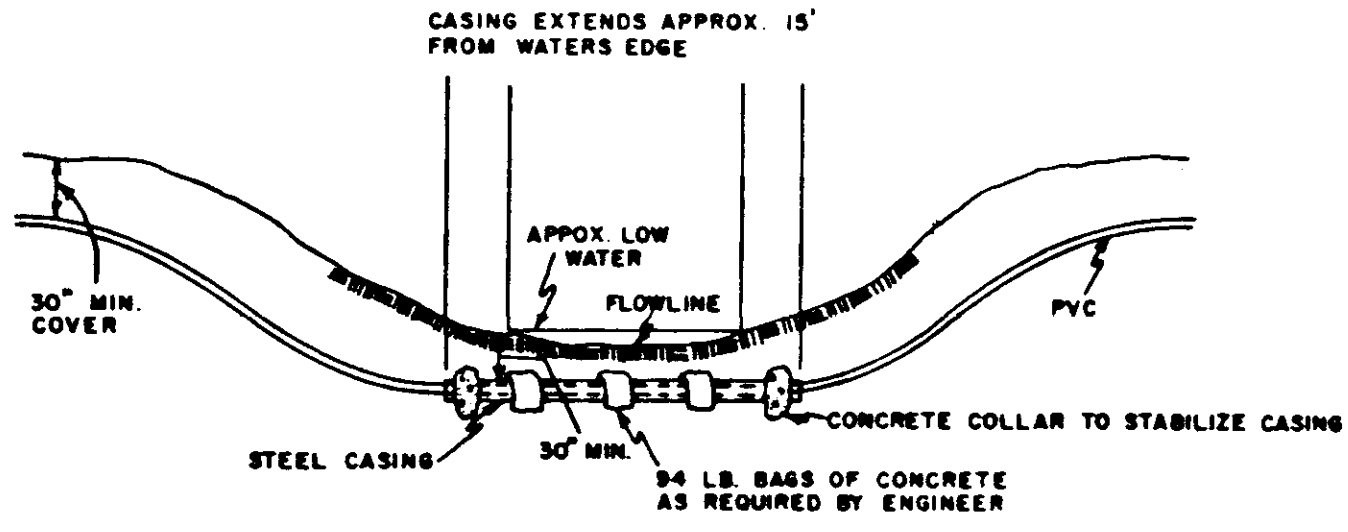


SECTION 1-1

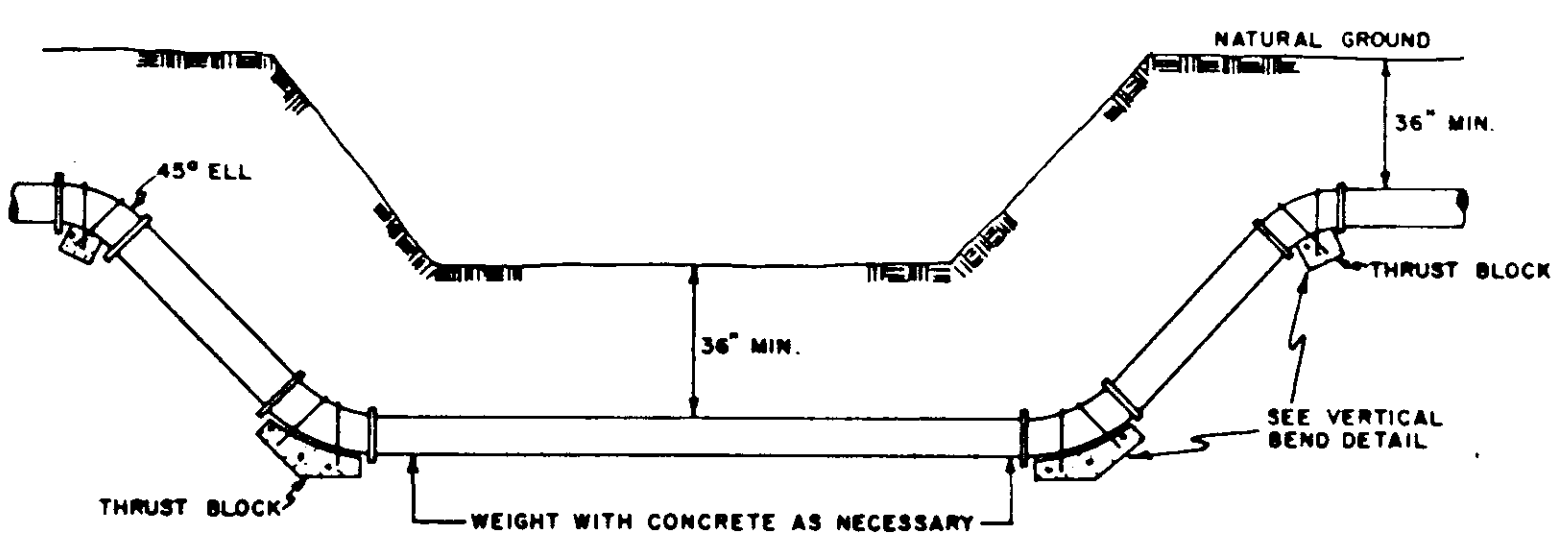


SECTION 2-2

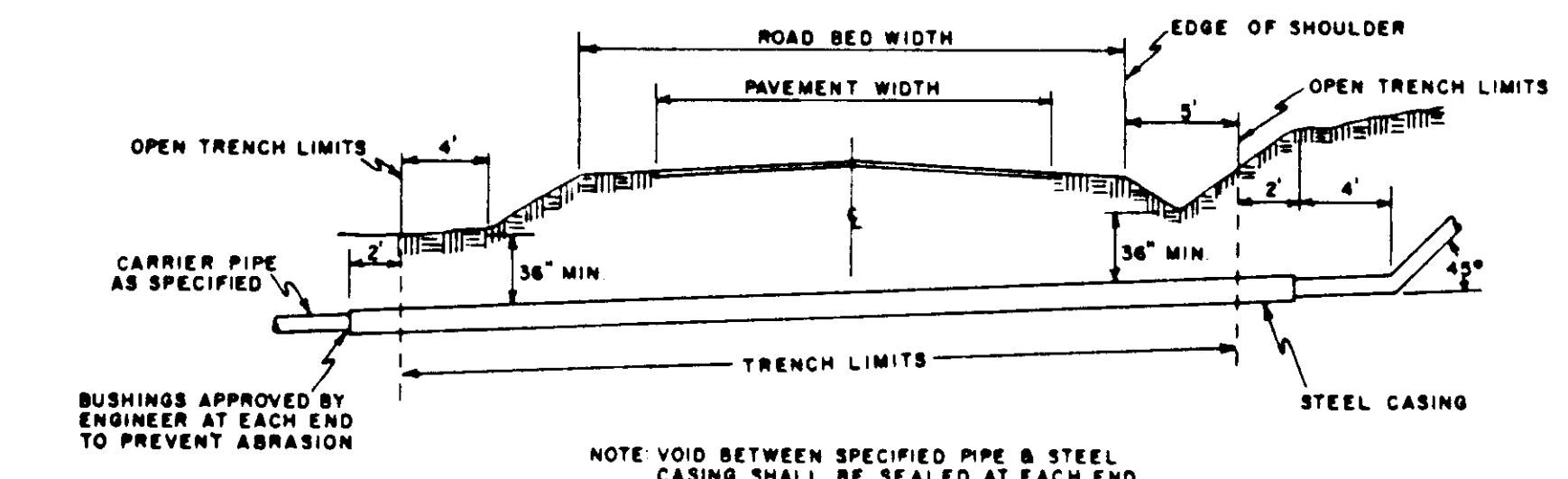
TYPICAL AIR RELEASE VALVE AND MANHOLE



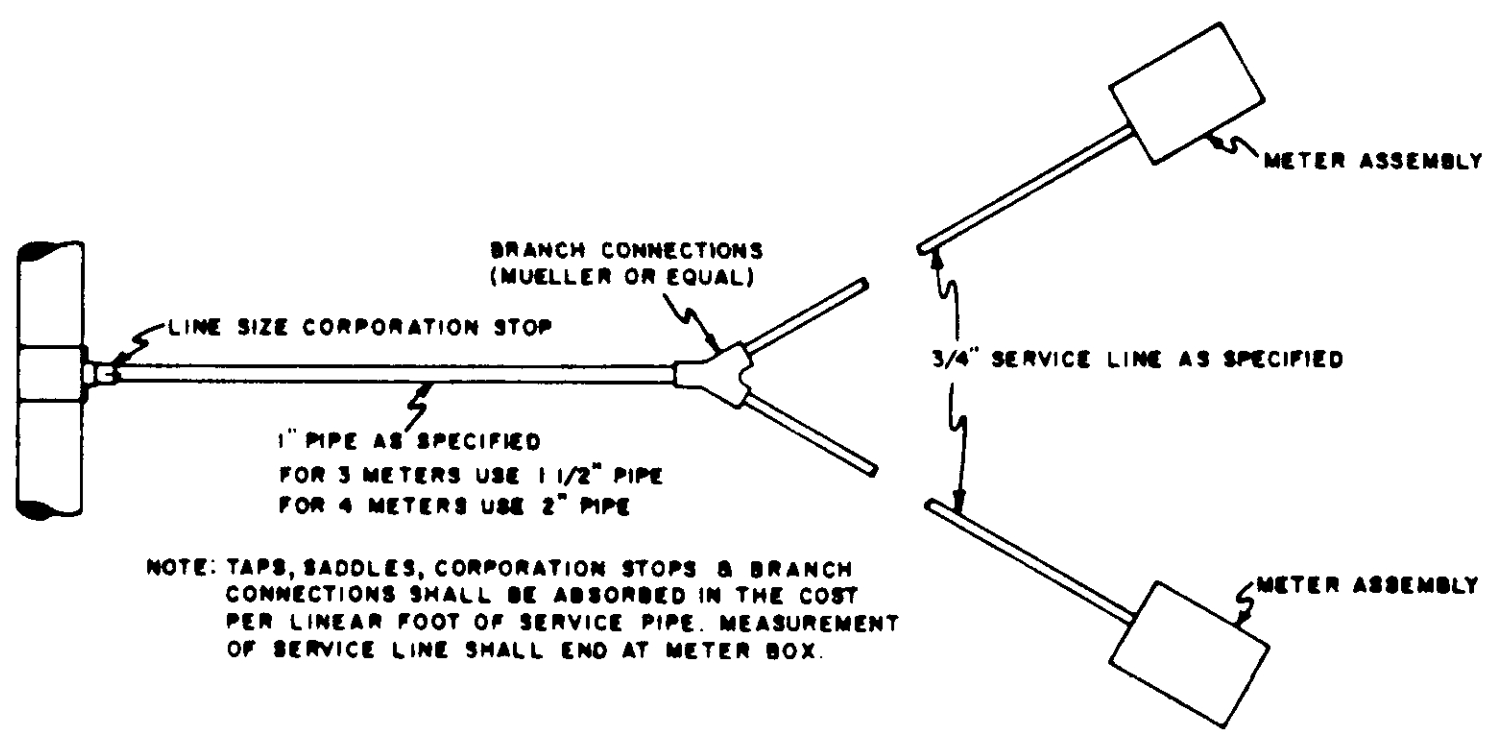
TYPICAL CREEK CROSSING FOR PVC PIPE



TYPICAL CREEK CROSSING FOR DUCTILE IRON PIPE

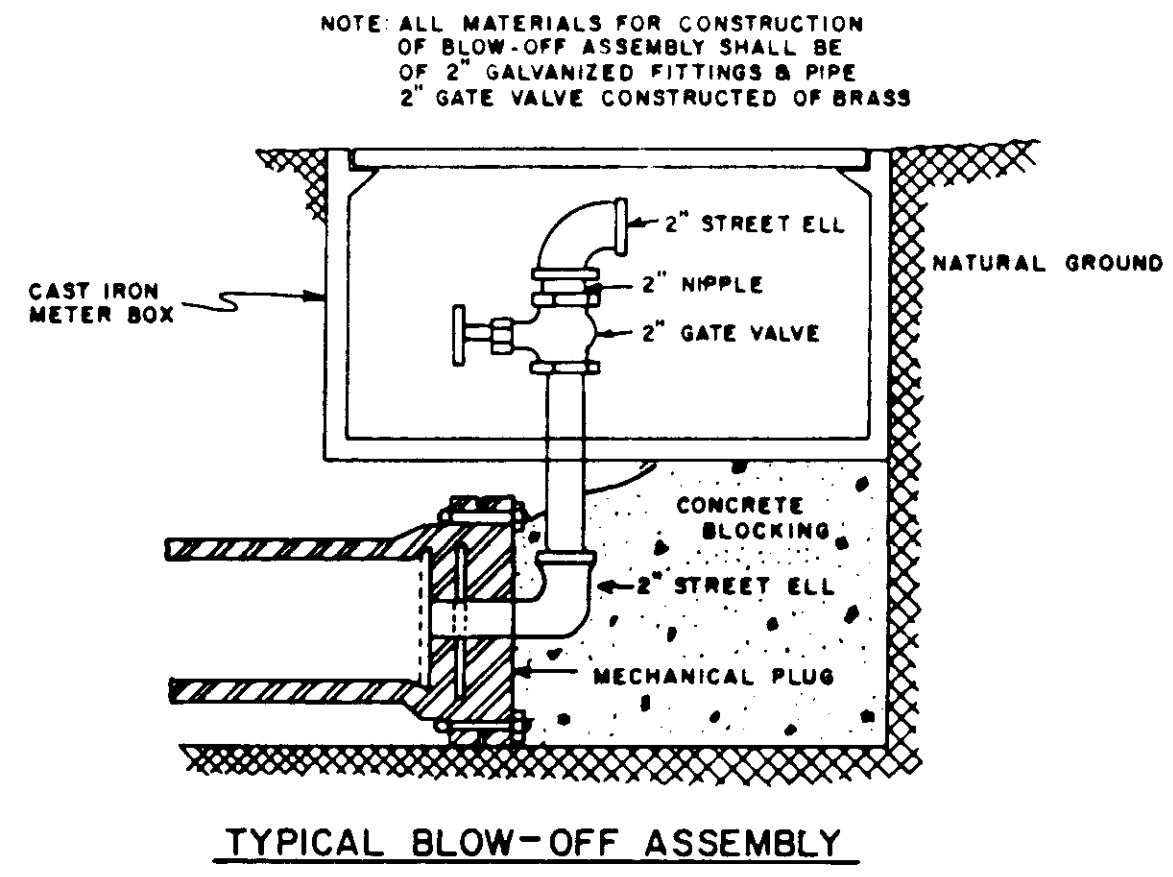


TYPICAL ROAD BORE

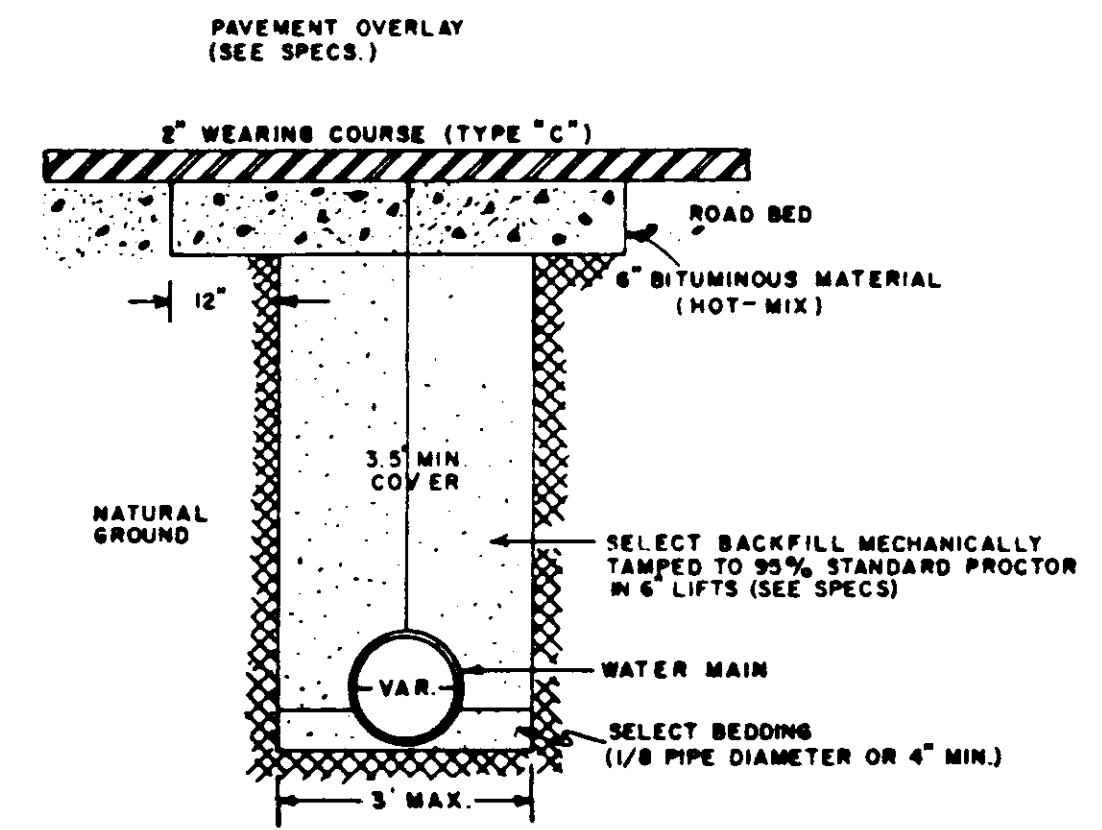


MULTIPLE CONNECTIONS

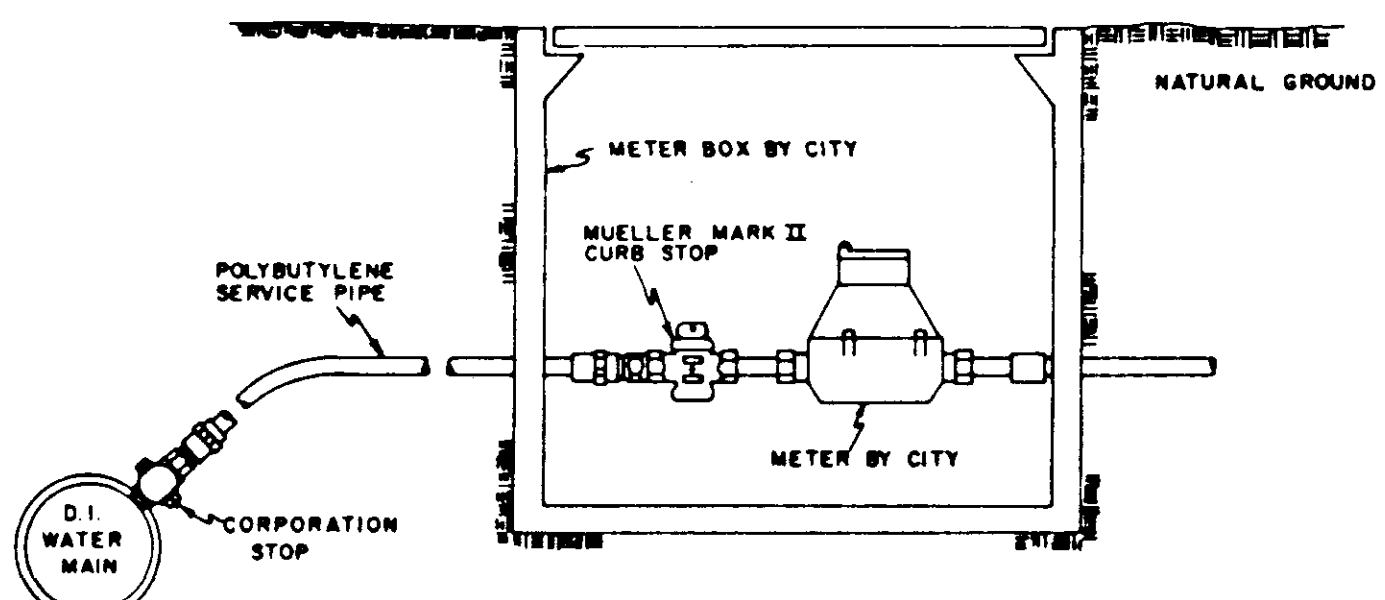
SERVICE CONNECTIONS



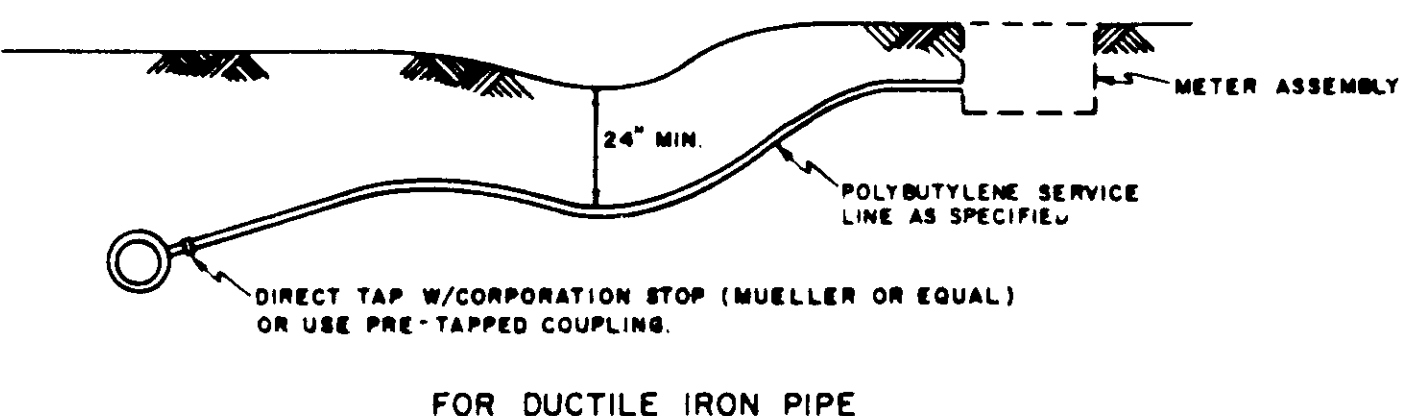
TYPICAL BLOW-OFF ASSEMBLY



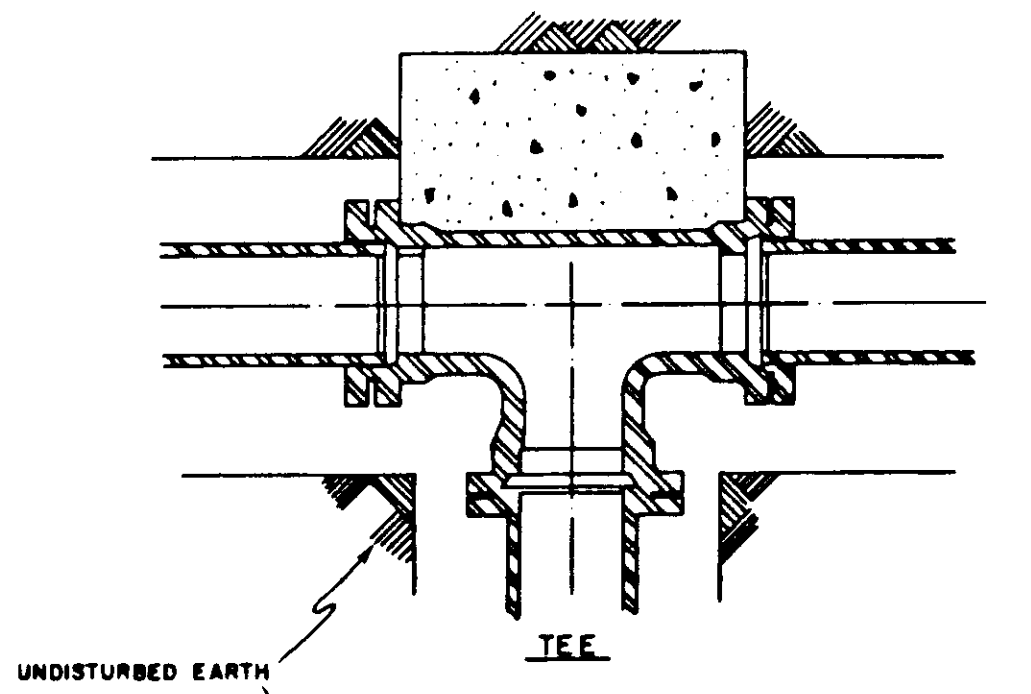
TYPICAL STREET REPAIR



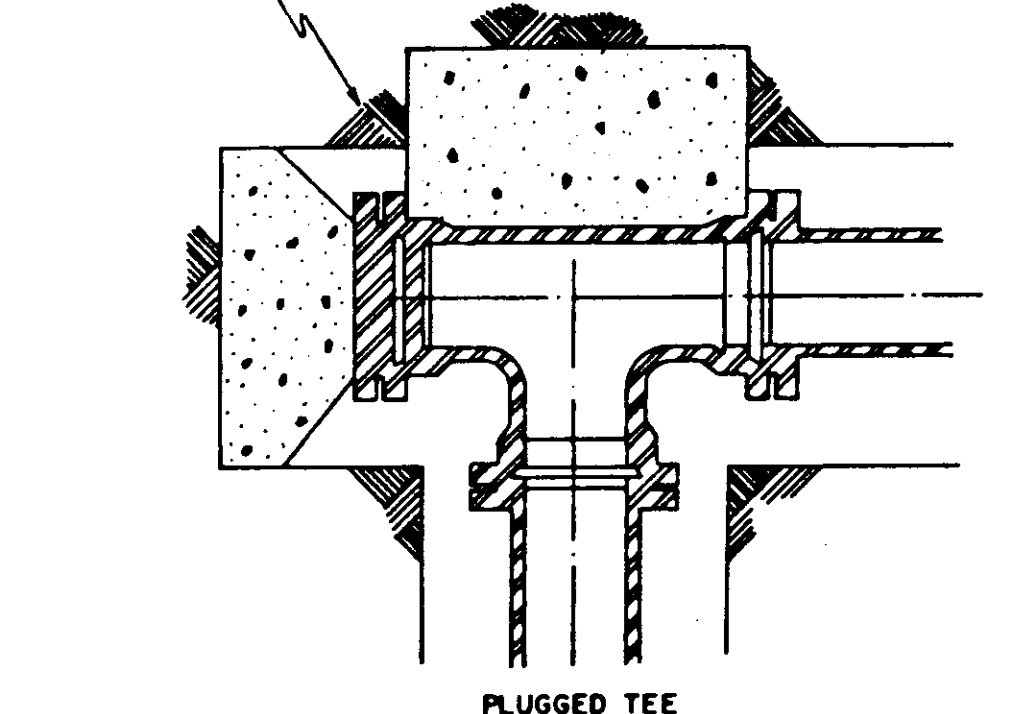
TYPICAL SERVICE ASSEMBLY



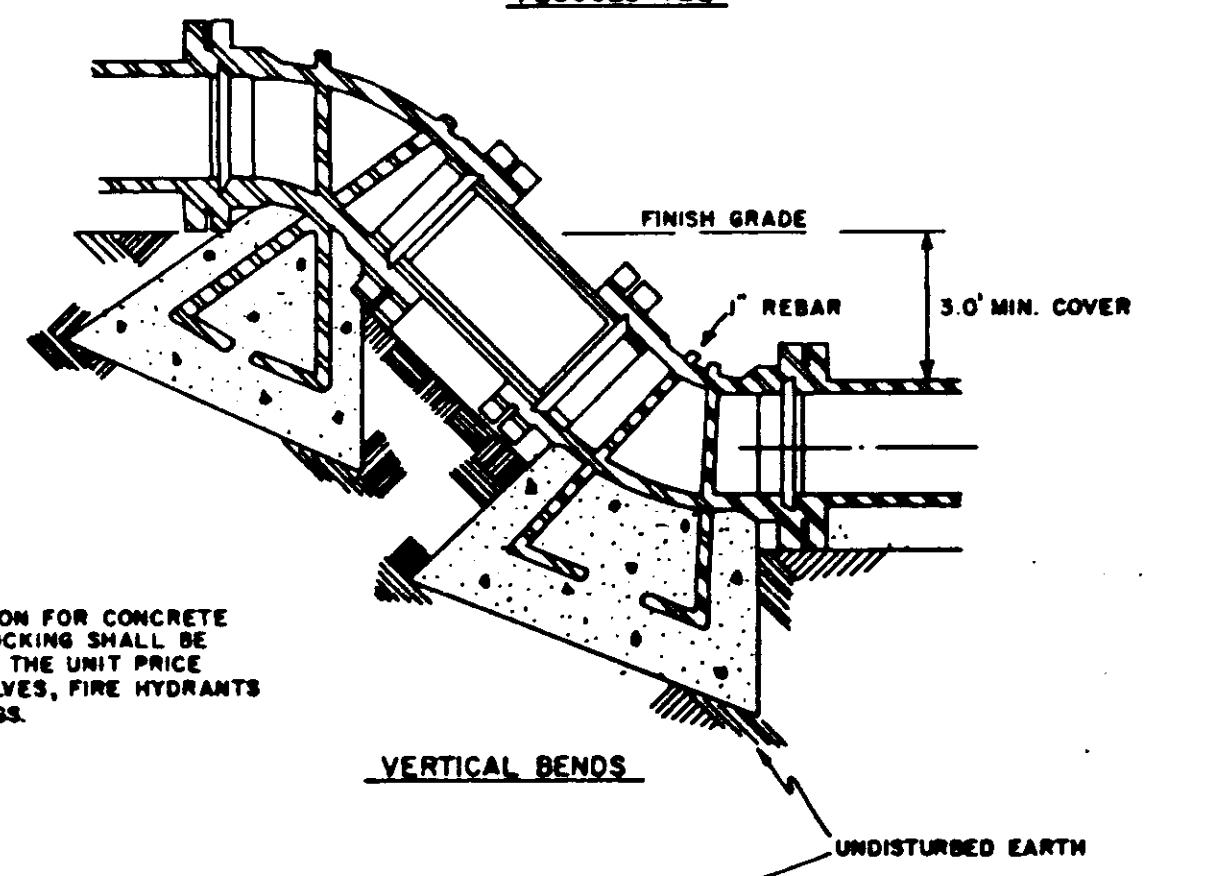
FOR DUCTILE IRON PIPE



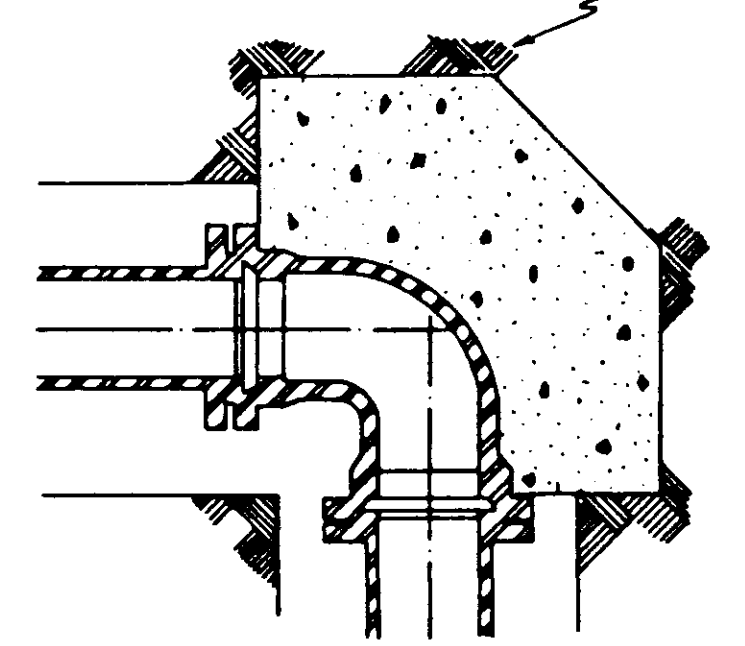
TEE



PLUGGED TEE



VERTICAL BENDS



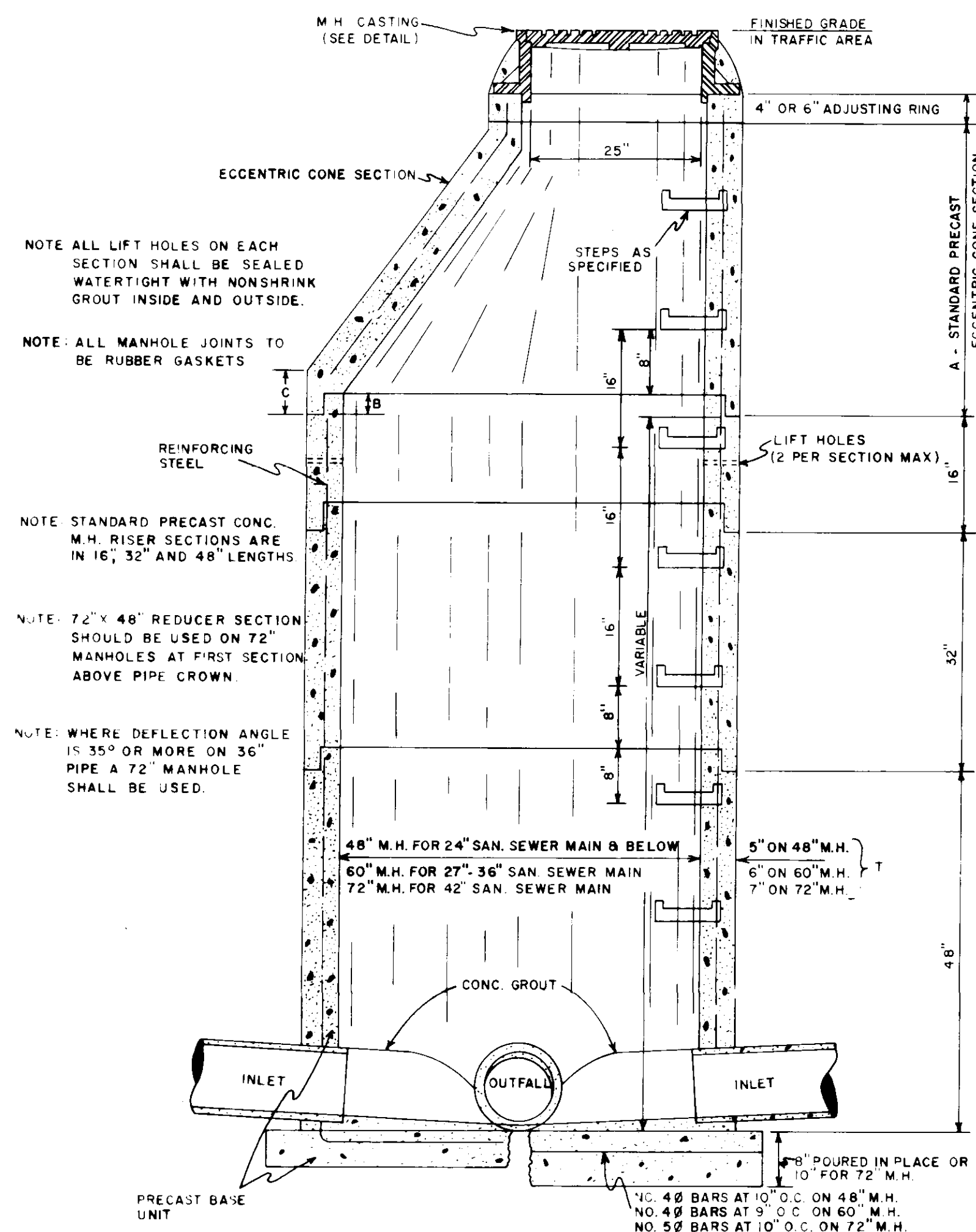
TYPICAL BLOCKING ON WATER MAIN (3000 PSI CONCRETE REQUIRED)

BEARING AREA IN SQ. FT.						
NOMINAL PIPE DIAMETER (IN.)	DEAD-END OR TEE	90° BEND	45° BEND	22 1/2° BEND	11 1/4° BEND	
4	2.0	2.0	2.0	2.0	2.0	
6	2.0	2.0	2.0	2.0	2.0	
8	3.0	3.0	3.0	3.0	3.0	
12	8.0	6.0	4.0	3.0	3.0	
16	8.0	12.0	6.0	4.0	4.0	
VERTICAL BENDS						
4		6.0 (.22)	4.0 (.18)	4.0 (.18)		
6		14.0 (.52)	6.0 (.28)	4.0 (.18)		
8		27.0 (1.0)	9.0 (.33)	6.0 (.28)		
12		68.0 (2.5)	22.0 (.80)	8.0 (.33)		
16		90.0 (3.33)	22.0 (1.8)	18.0 (.67)		
VOLUME OF BLOCKS INCLUDING SOIL LOAD CU. FT. (CU. YDS.)						

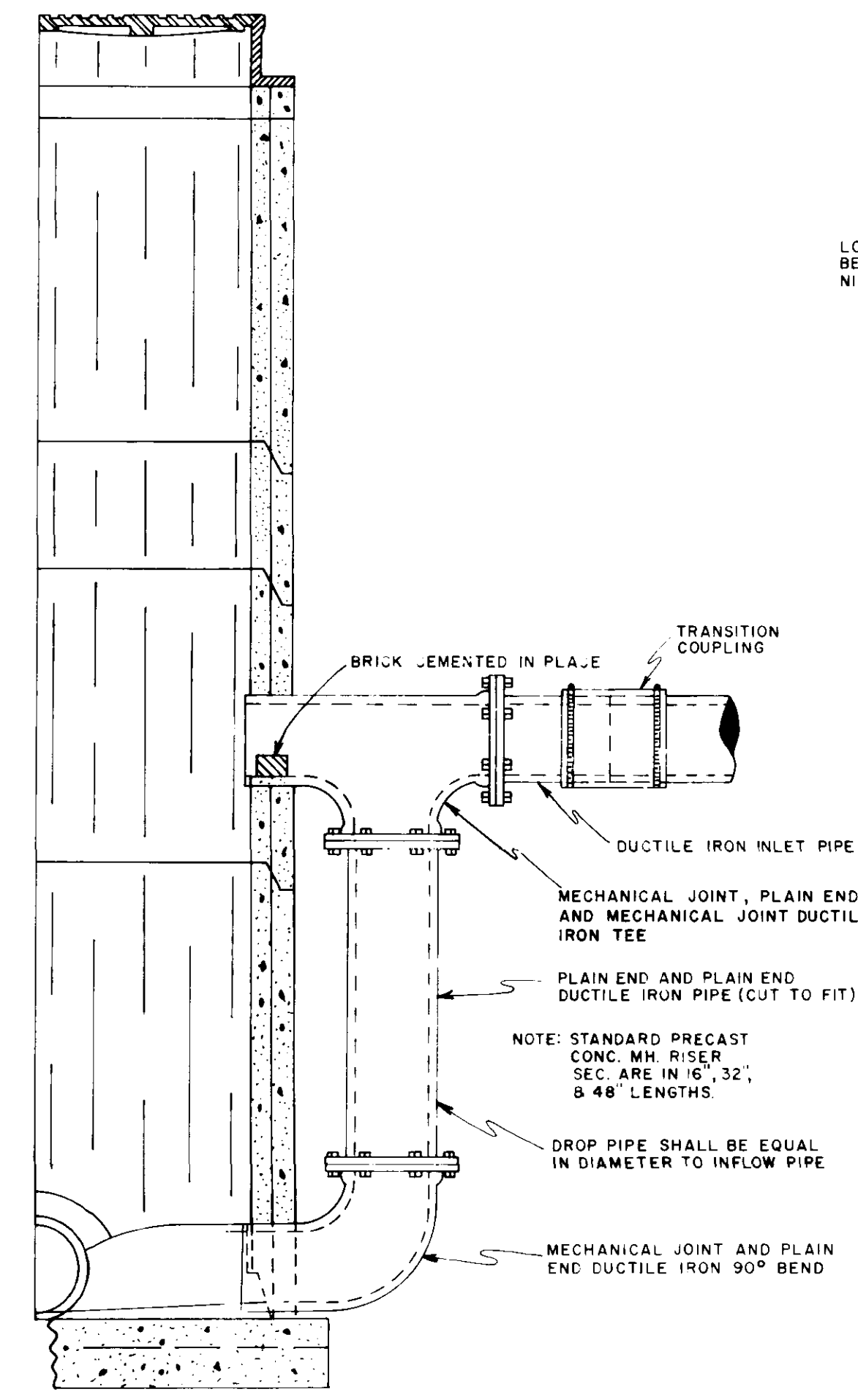
DESIGNED	DATE
S.F.A.	11/1/85
DRAWN	SCALE
T.A.H.	NONE

STANDARD WATER DETAILS

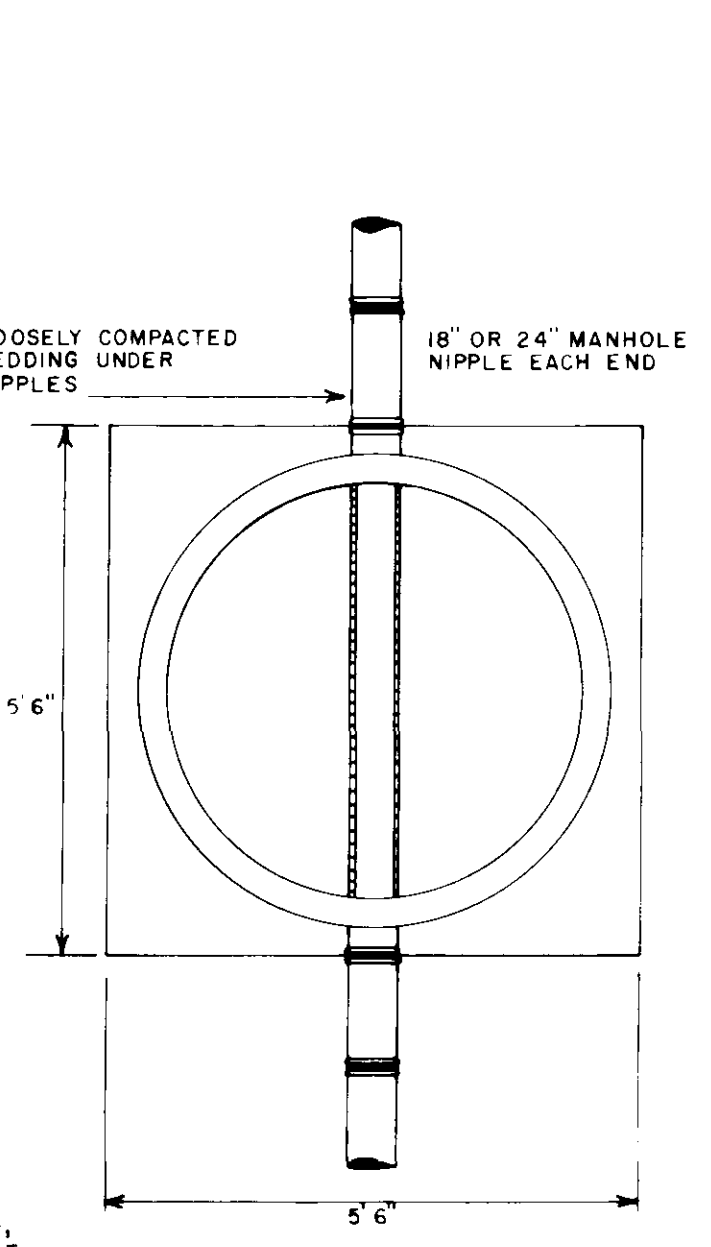
PROJECT NO.	
FILE NO.	SHEET NO.
	1



SECTION
PRECAST CONCRETE MANHOLE



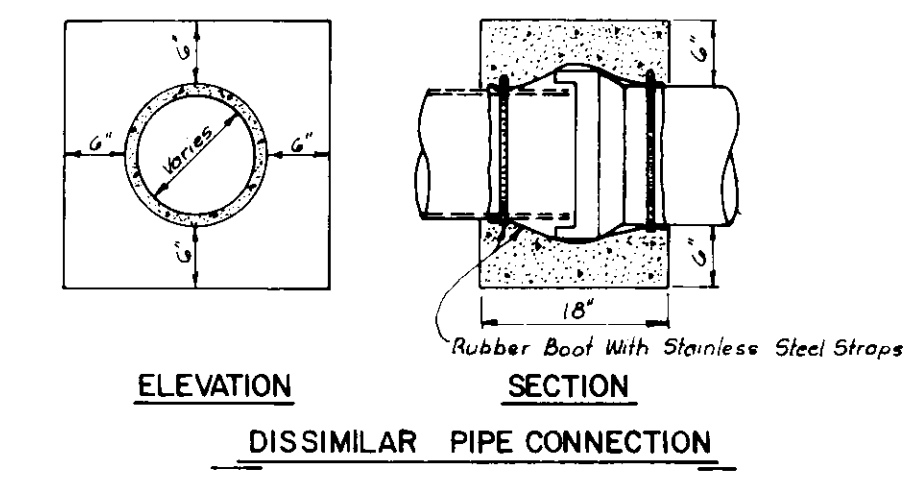
SECTION OF PRECAST CONCRETE
MANHOLE WITH DROP CONN



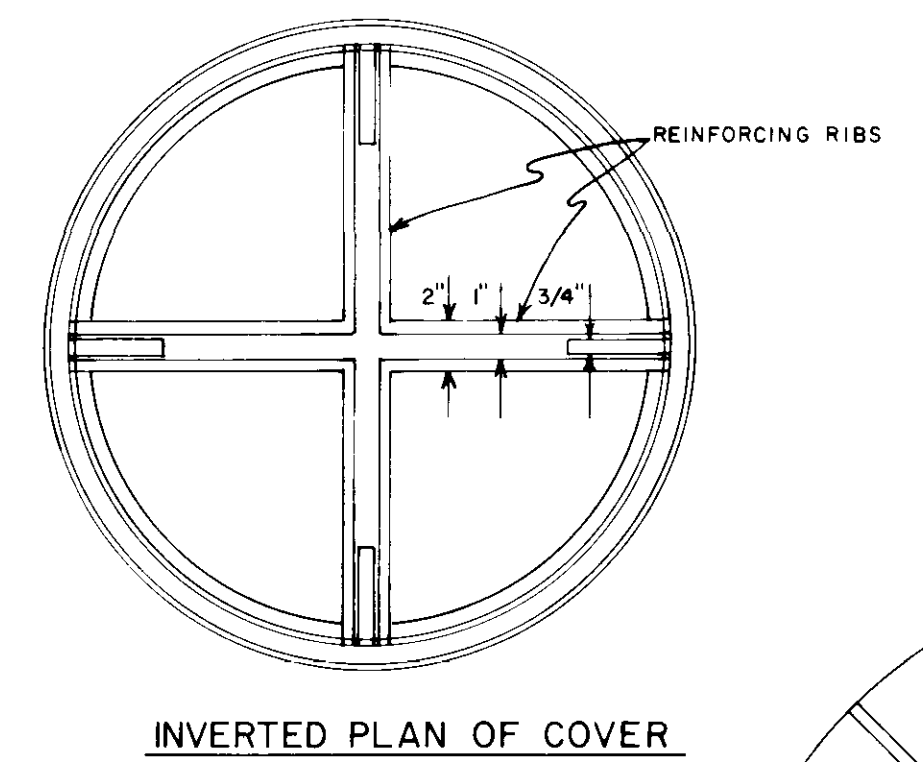
TYPICAL PIPE CONNECTION TO MANHOLE

SECTION OF PRECAST CONCRETE MANHOLE

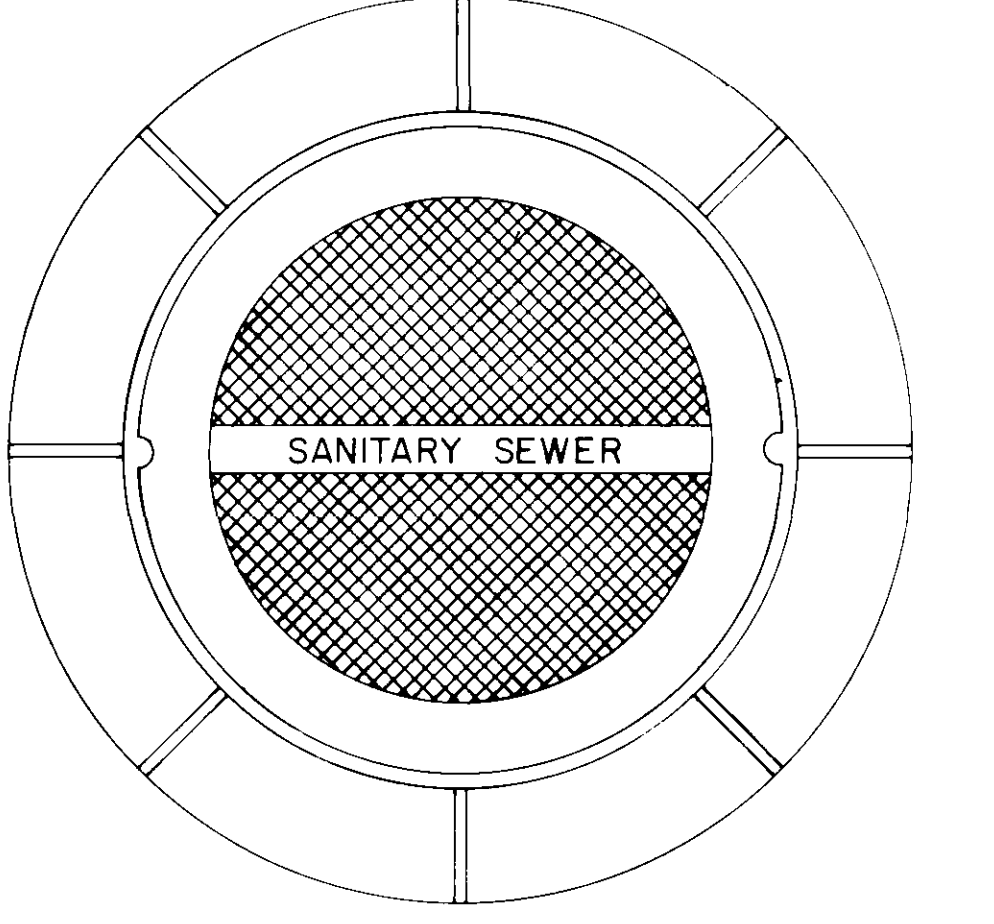
DIA.	A	B	C	T	APPROX. CONE WT.	APPROX. CONE WT.
48"	38"	3 1/2"	5"	5"	2075 LBS	870 LBS
60"	36"	5"	9"	6"	3455 LBS	1250 LBS



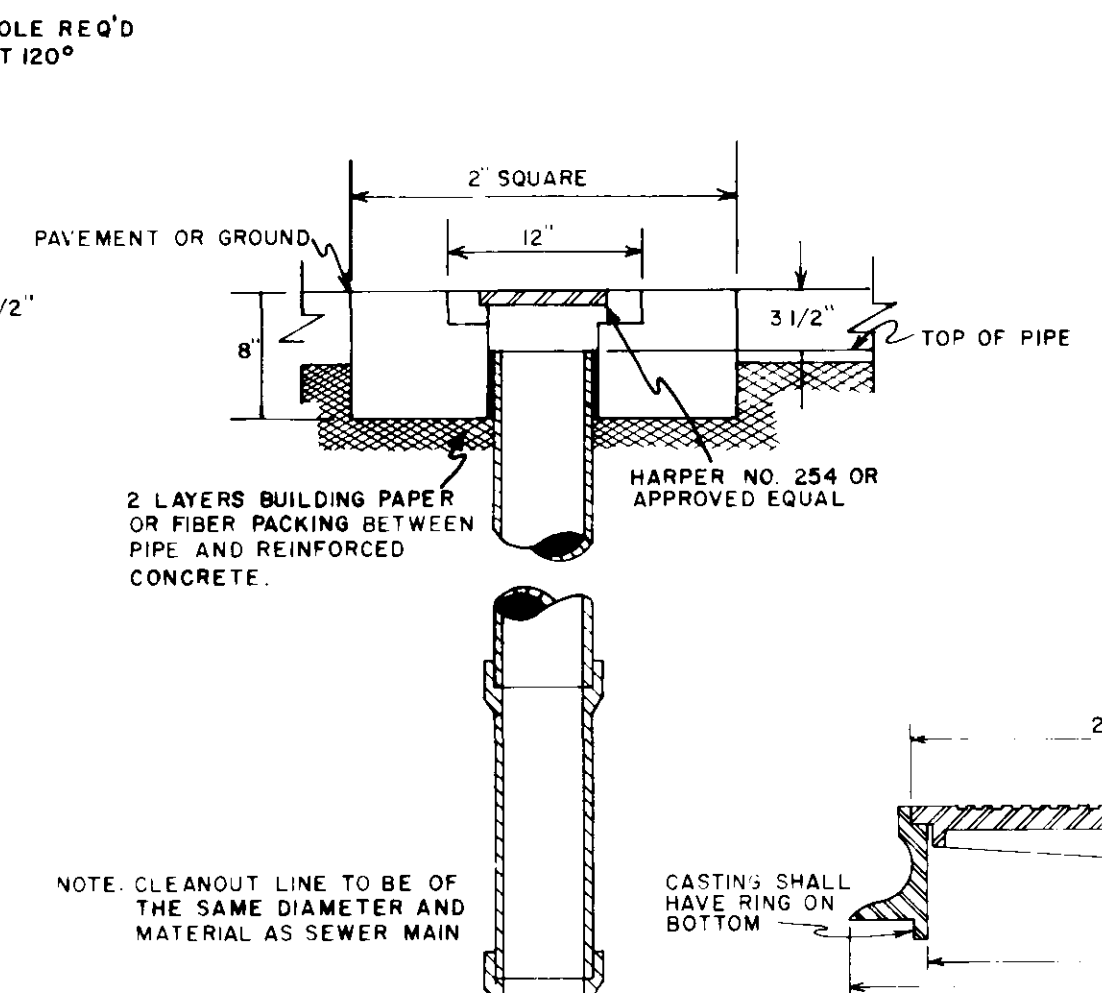
NOTE:
1. DO NOT POUR ADDITIONAL CONCRETE ON OR BEYOND MANHOLE NIPPLE.
2. USE A MINIMUM OF 1 NIPPLE AT EACH ENTRANCE TO MANHOLE.
3. PIPE OPENING IN PRE-CAST CONCRETE UNITS SHALL BE EQUAL TO O.D. OF PIPE PLUS 6\"/>



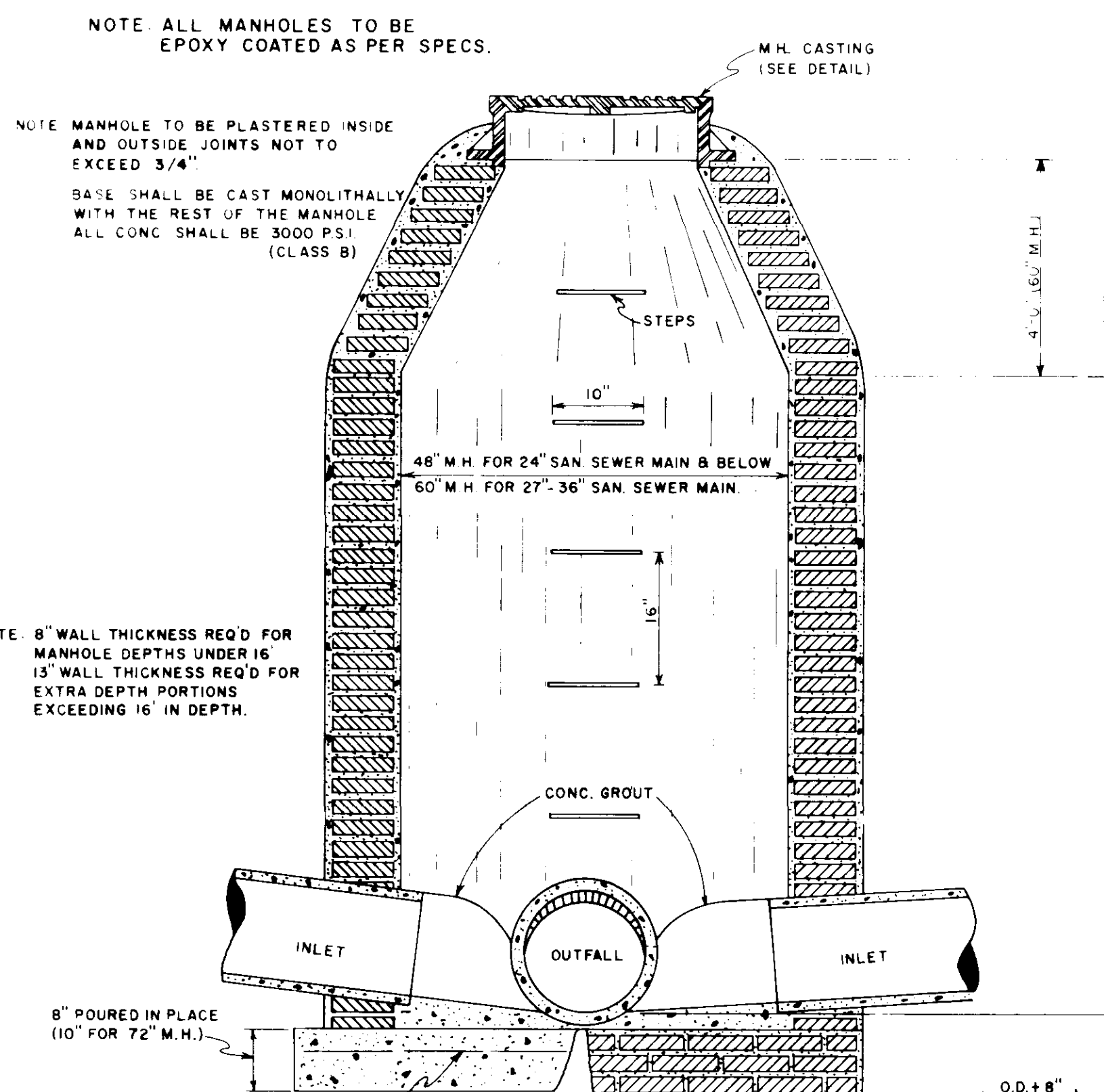
INVERTED PLAN OF COVER



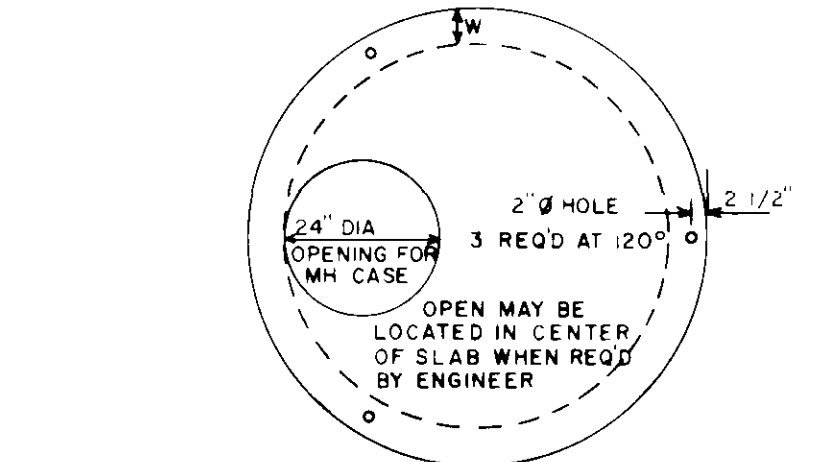
PLAN
MANHOLE CASTING



SUBSTITUTE SECTION
PRECAST MANHOLES NOT IN R.O.W.



SECTION
STANDARD BRICK MANHOLE

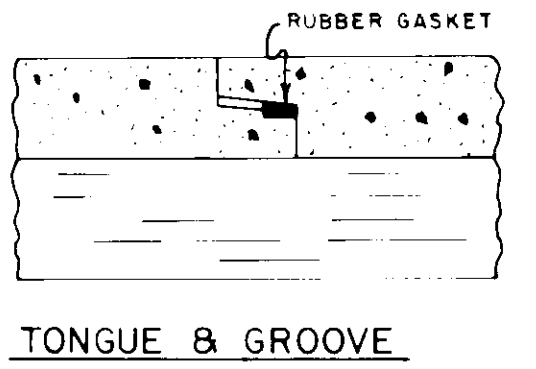


FLAT SLAB MANHOLE TOP

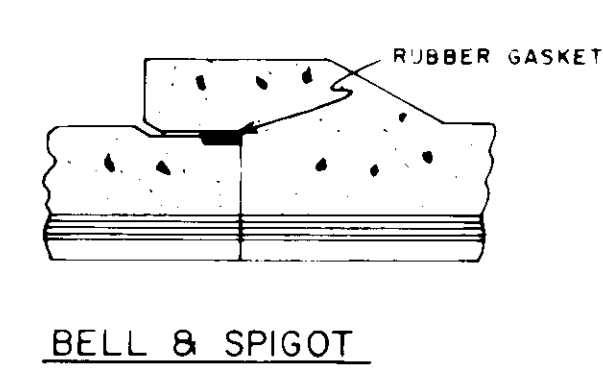
DIMENSION AND WEIGHT TABLE

PIPE DIA.	W	D	T	EST. WT.
48"	5"	58"	6"	1,145 LBS.
54"	5 1/2"	65"	8"	1,990 LBS.
60"	6"	72"	8"	2,515 LBS.
65"	6 1/2"	79"	8"	3,090 LBS.
72"	7"	86"	8"	3,720 LBS.
84"	8"	100"	8"	5,140 LBS.
96"	9"	114"	8"	6,775 LBS.
108"	9"	126"	8"	8,345 LBS.

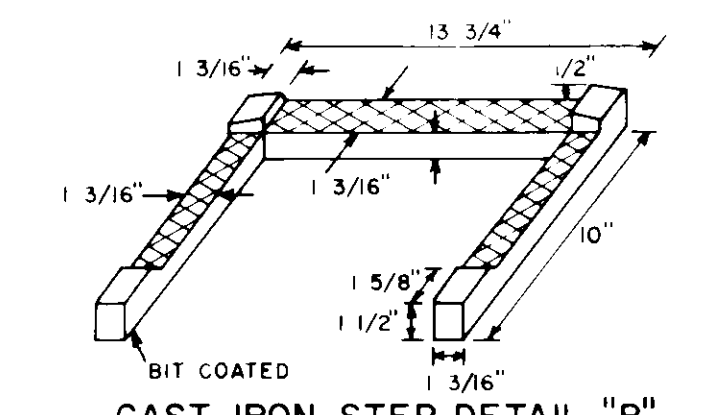
DIMENSION AND WEIGHT TABLE



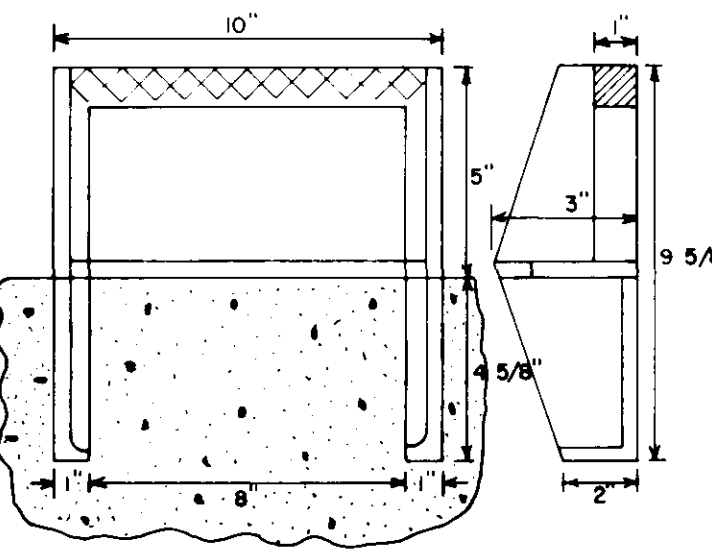
TONGUE & GROOVE



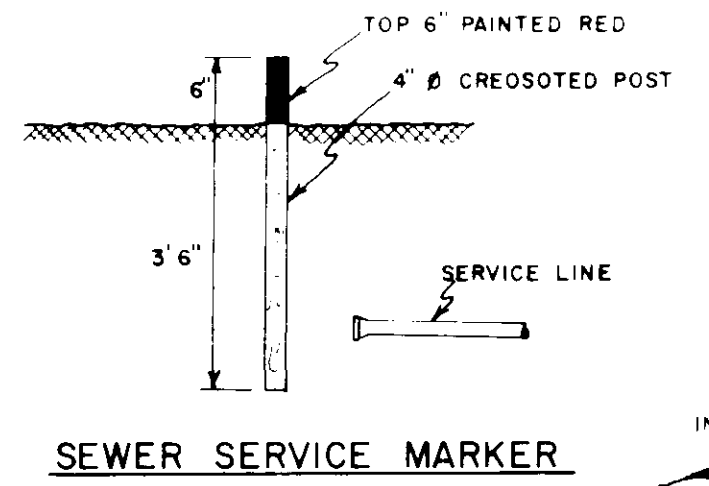
BELL & SPIGOT



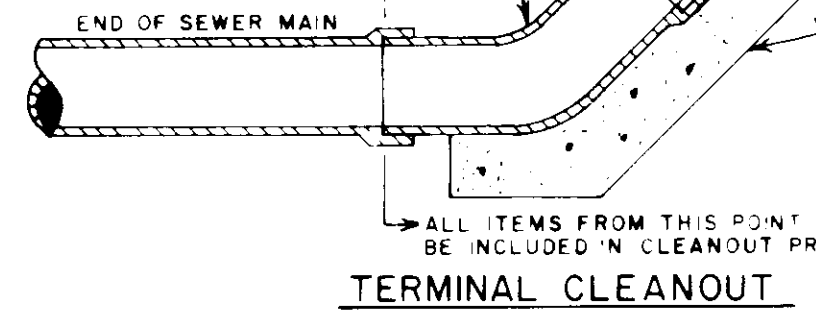
CAST IRON STEP DETAIL "B"



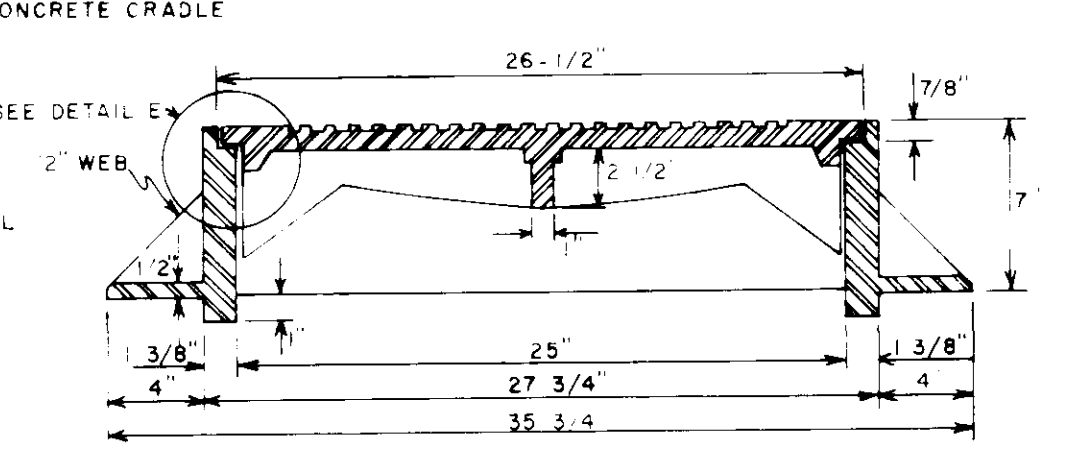
STEP DETAIL "A"



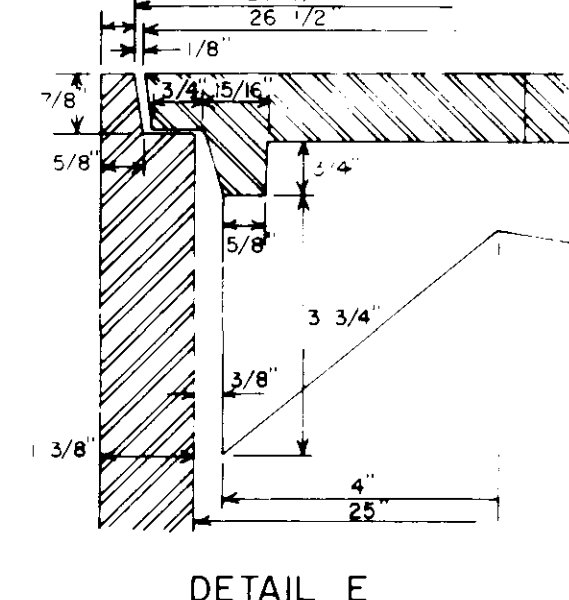
SEWER SERVICE MARKER



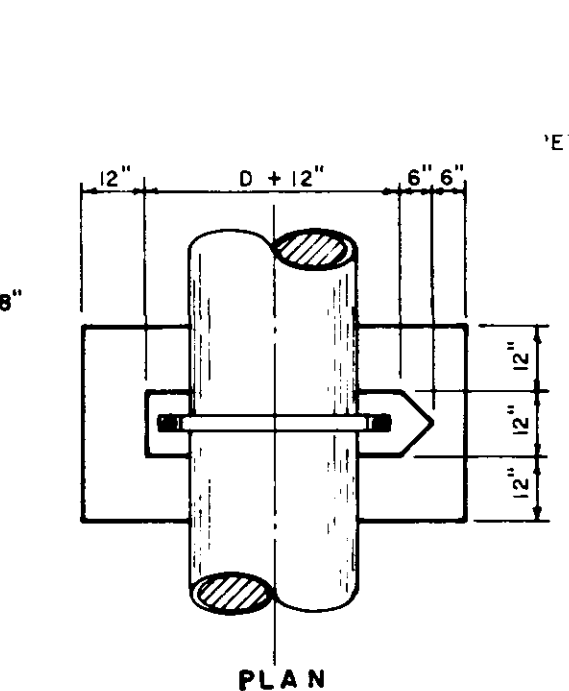
TERMINAL CLEANOUT



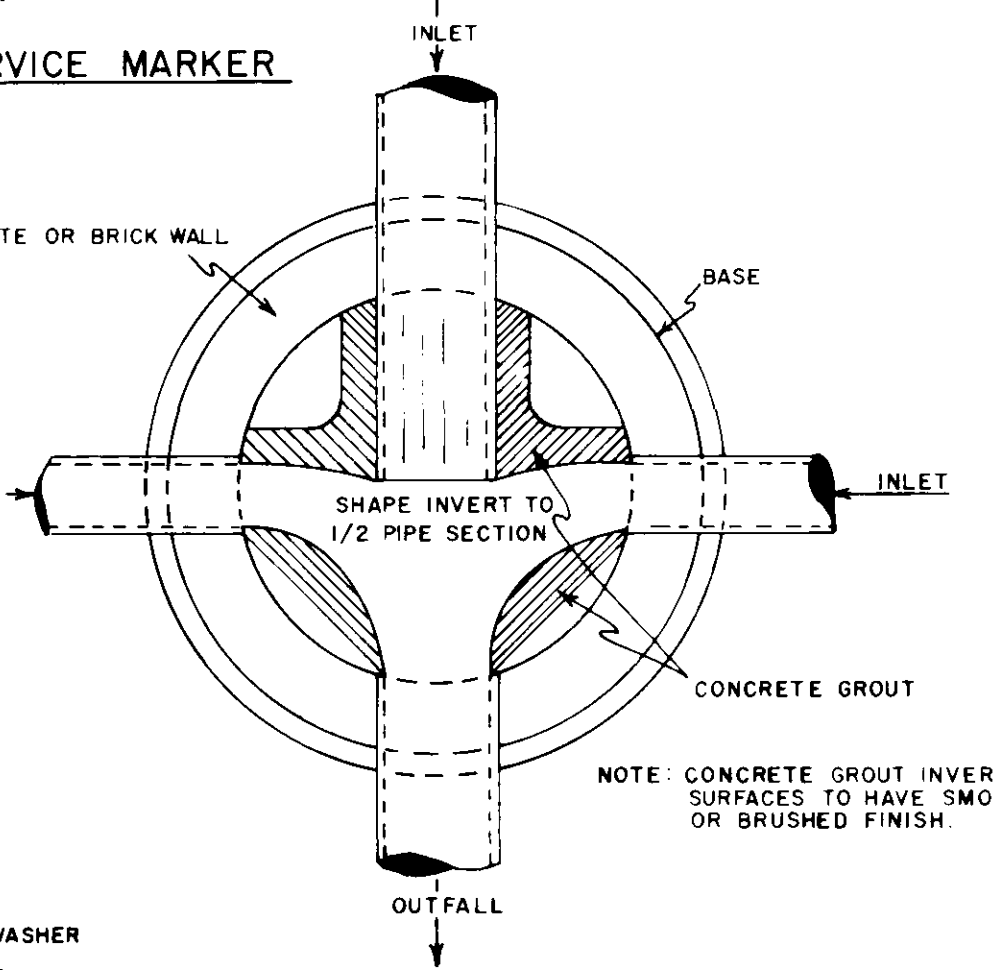
SECTION
MANHOLE CASTING
(TRAFFIC TYPE)



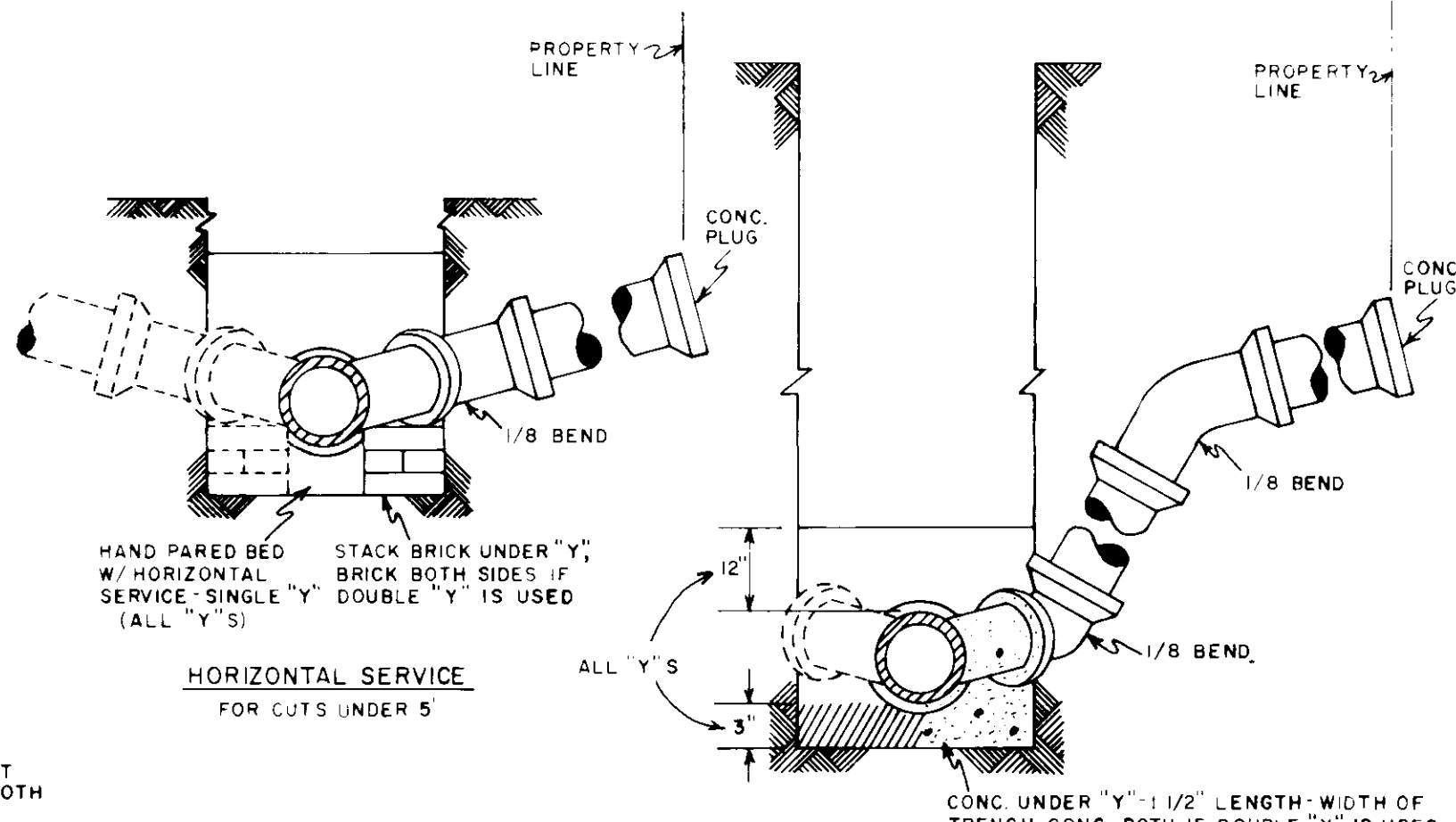
DETAIL E



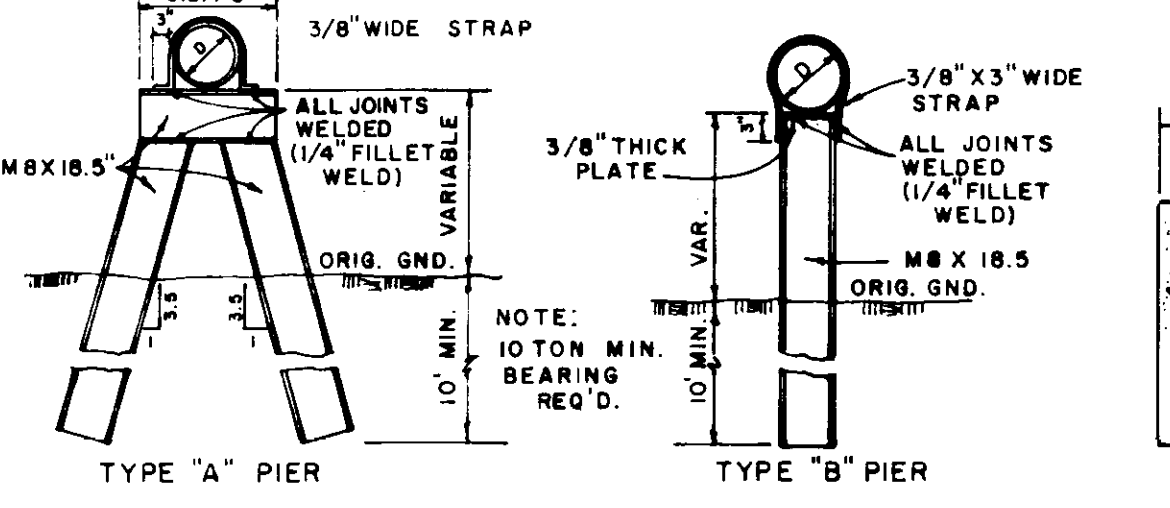
PLAN



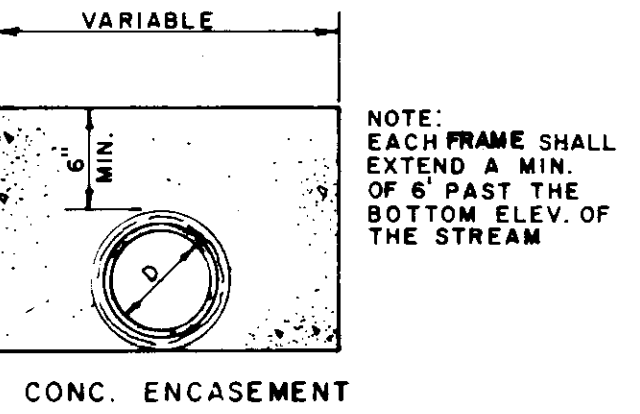
PLAN OF MANHOLE
FLOW CHANNELS



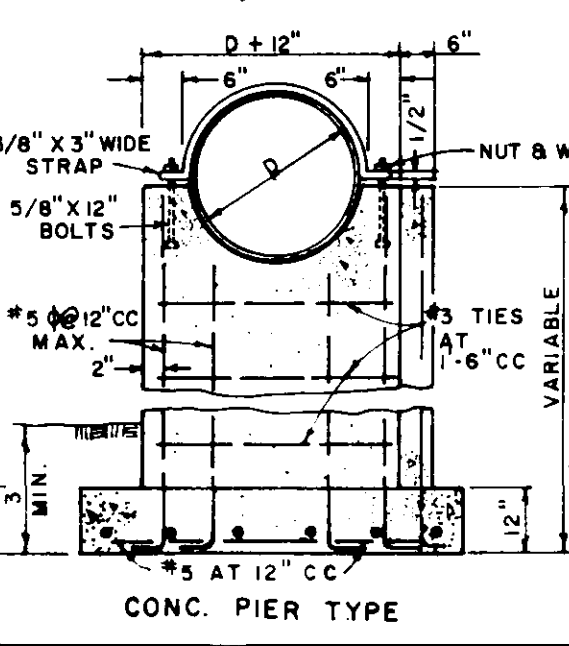
TYPICAL "Y" SERVICE CONNECTIONS



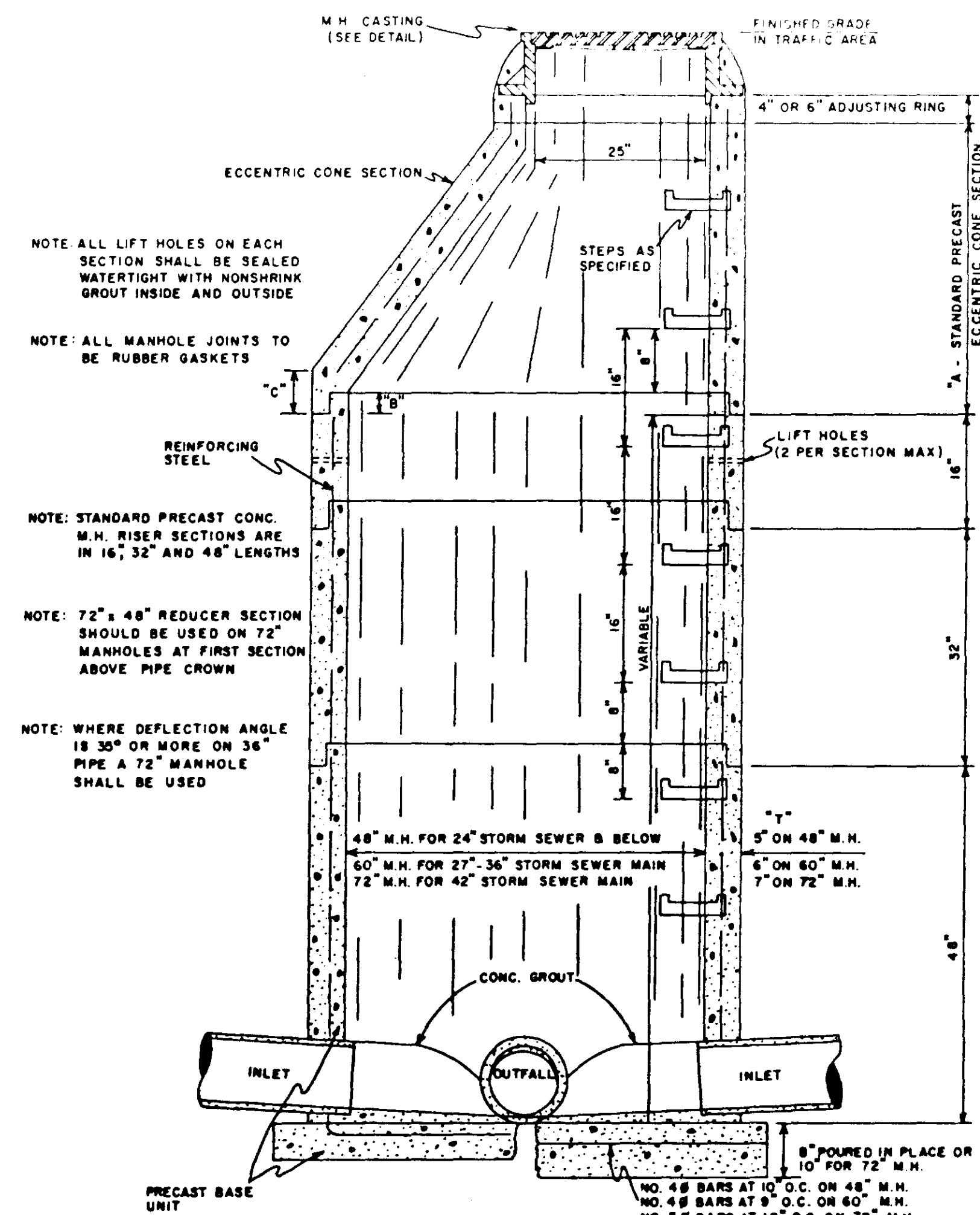
TYPICAL DETAILS FOR DITCH OR STRAM CROSSINGS



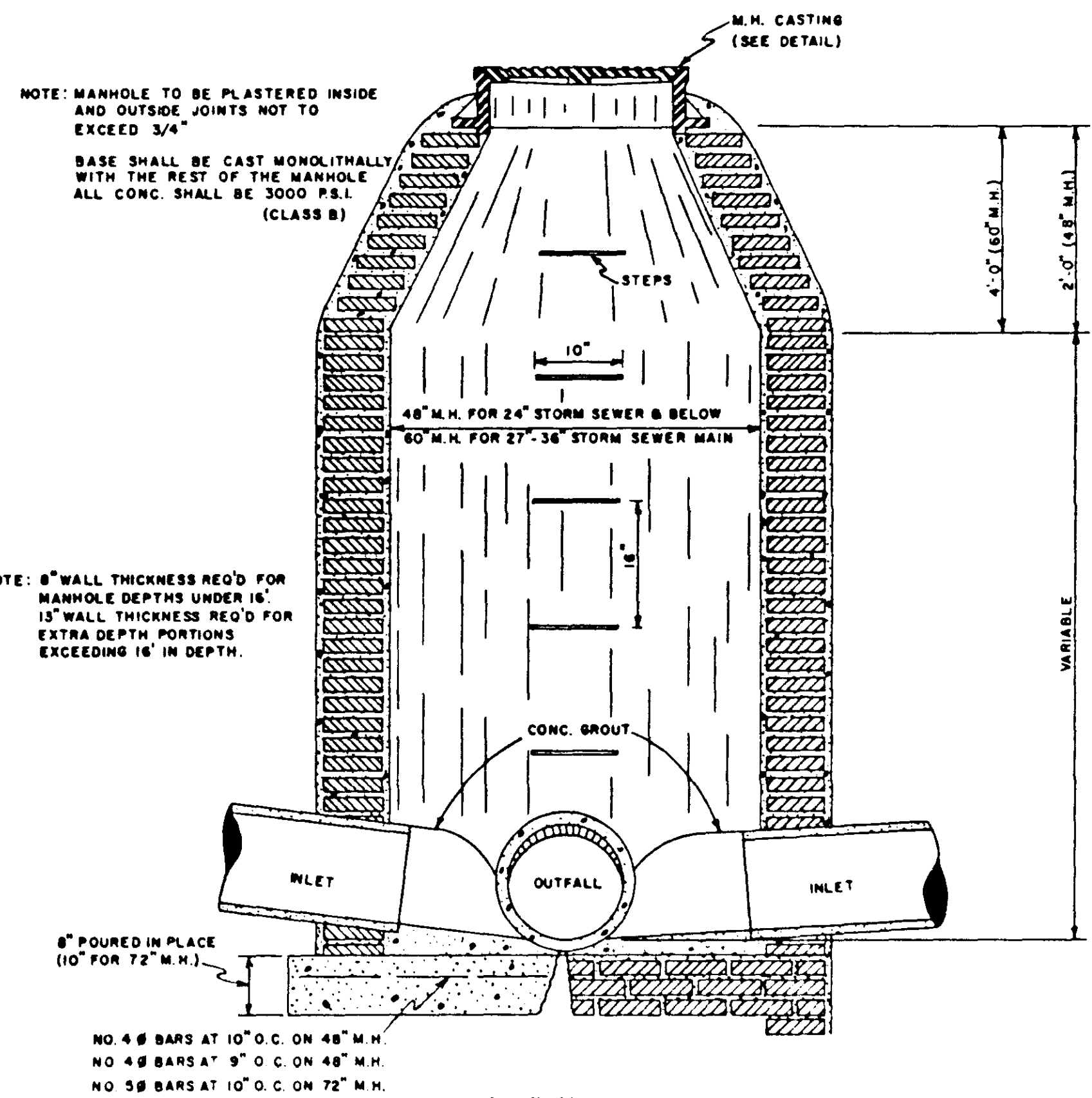
CONC. ENCASMENT



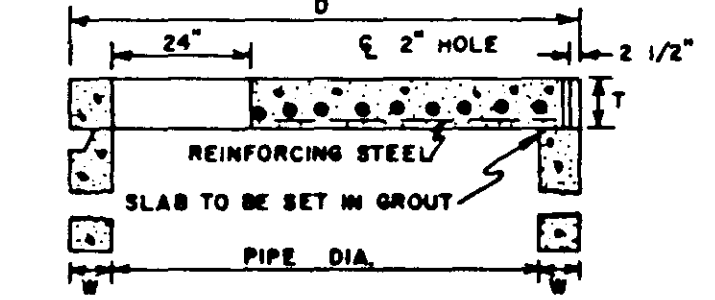
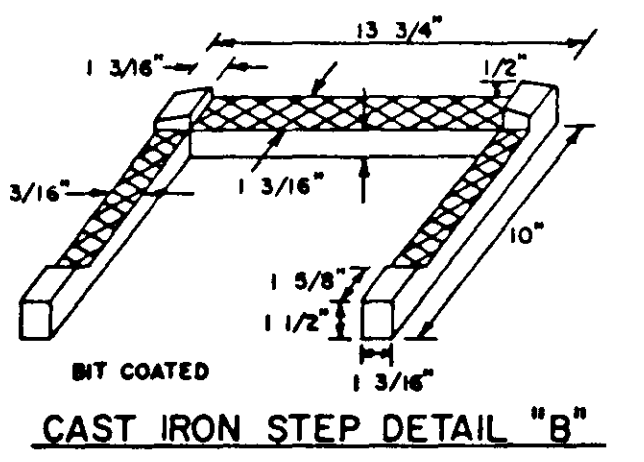
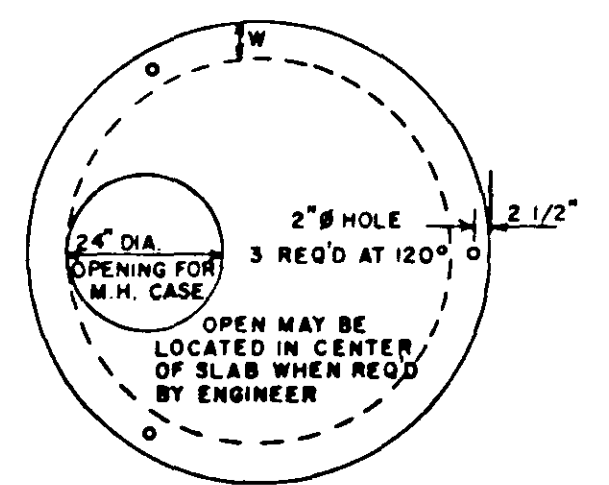
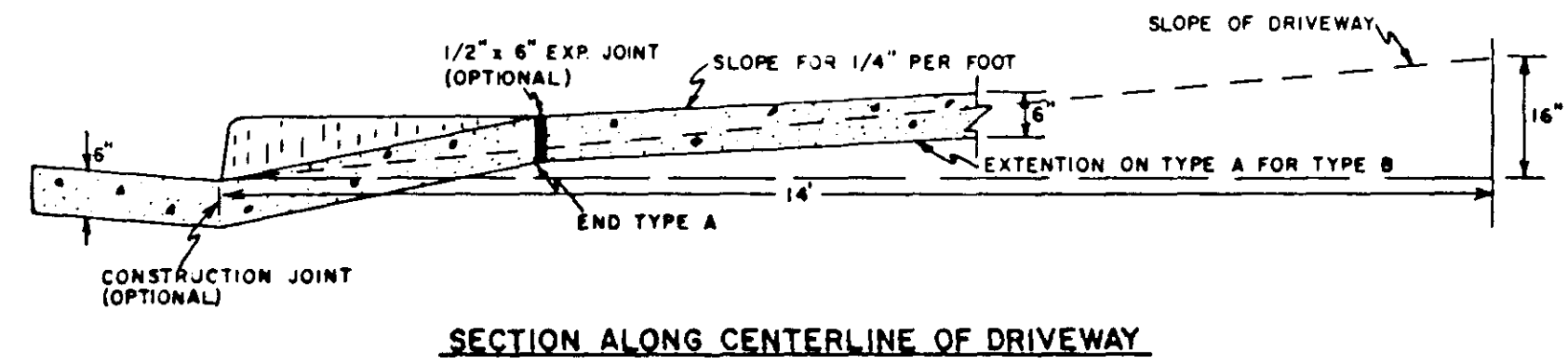
CONC. PIER TYPE



SECTION PRECAST CONCRETE MANHOLE

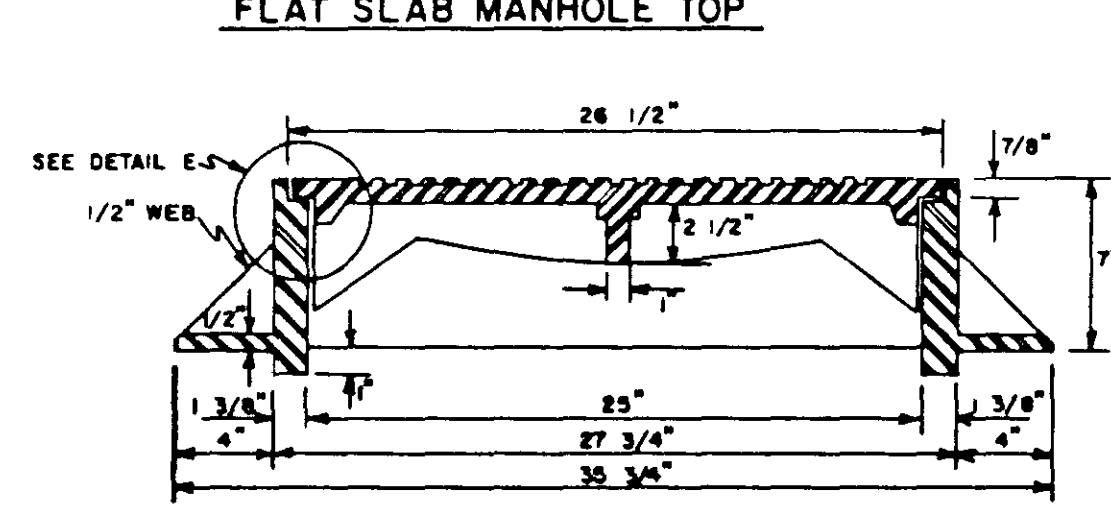


SECTION STANDARD BRICK MANHOLE

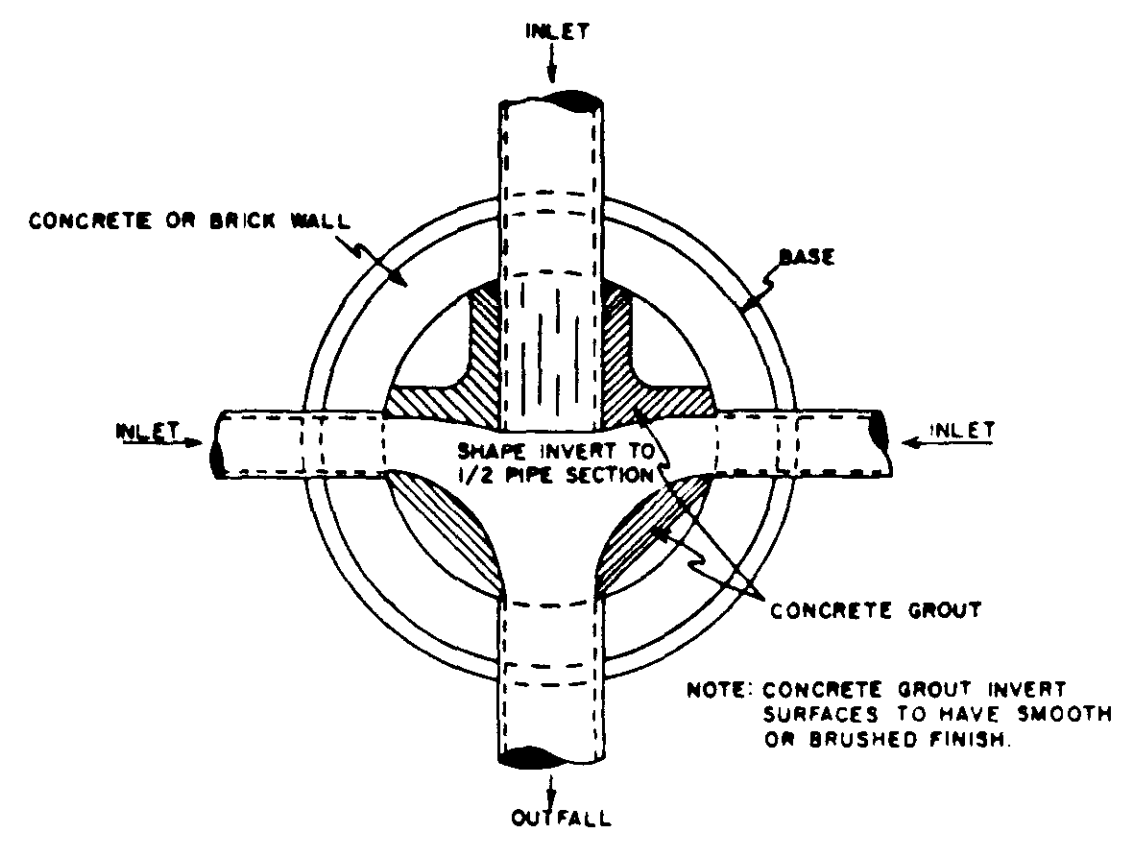
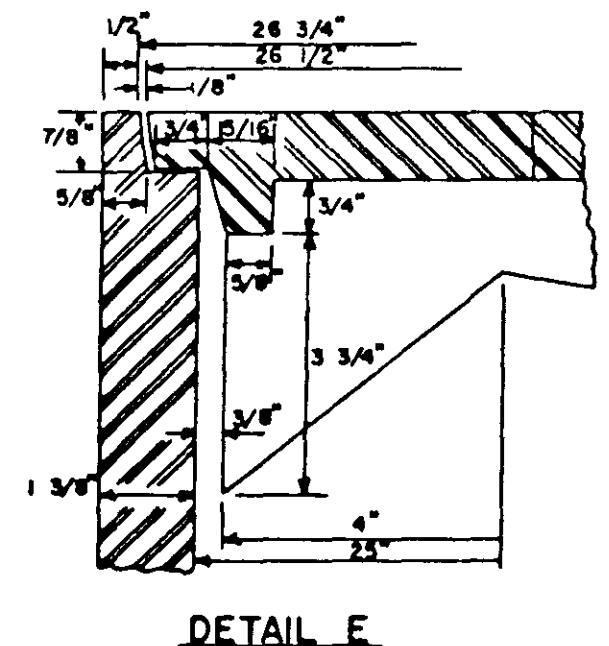


DIMENSION AND WEIGHT TABLE

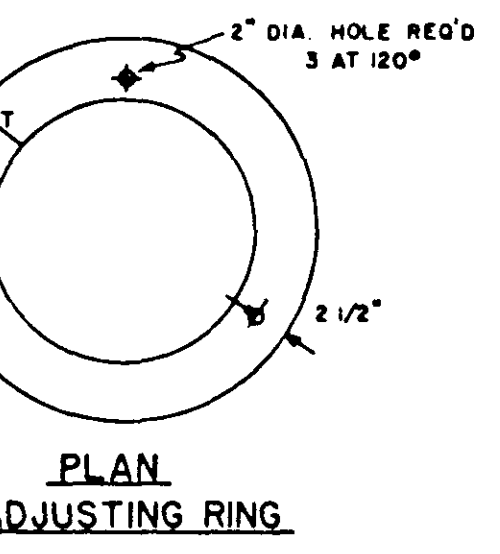
PIPE DIA.	W	D	T	EST. WT.
48"	5"	56"	6"	1,145 LBS.
54"	5 1/2"	60"	6"	1,990 LBS.
60"	6"	72"	6"	2,515 LBS.
66"	6 1/2"	78"	6"	3,090 LBS.
72"	7"	86"	6"	3,720 LBS.
84"	8"	100"	6"	5,140 LBS.
96"	9"	114"	6"	6,775 LBS.
108"	9"	126"	6"	8,345 LBS.



SECTION MANHOLE CASTING



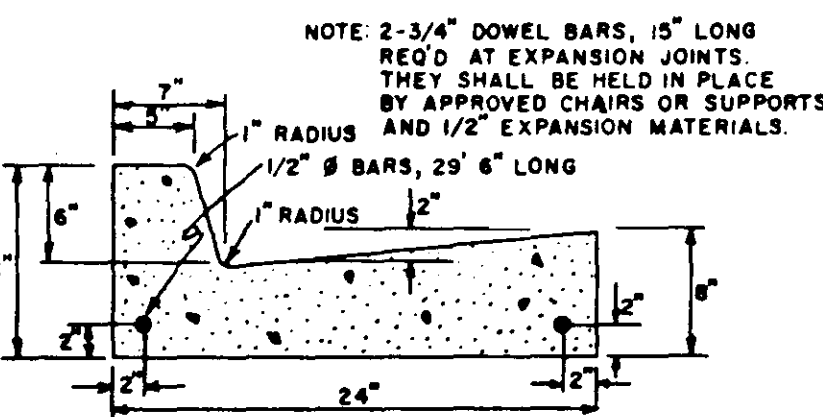
PLAN OF MANHOLE FLOW CHANNELS



SECTION OF PRECAST CONCRETE MANHOLE

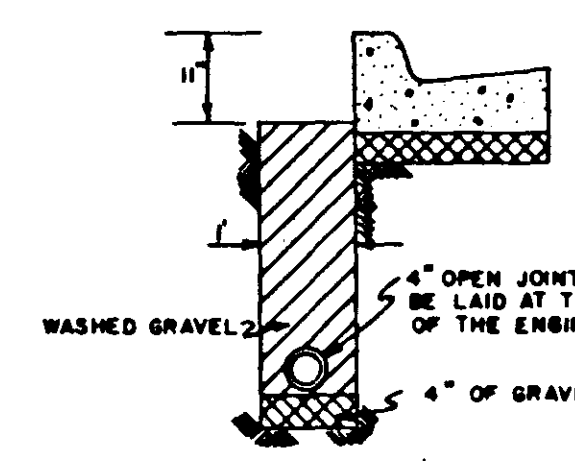
DIA.	A	B	C	T	APPROX. CONE WT.	APPROX. RISER WT.
48"	36"	3 1/2"	5"	5"	2075 LBS.	870 LBS.
60"	36"	5"	9"	6"	3455 LBS.	1250 LBS.

SECTION OF PRECAST CONCRETE MANHOLE

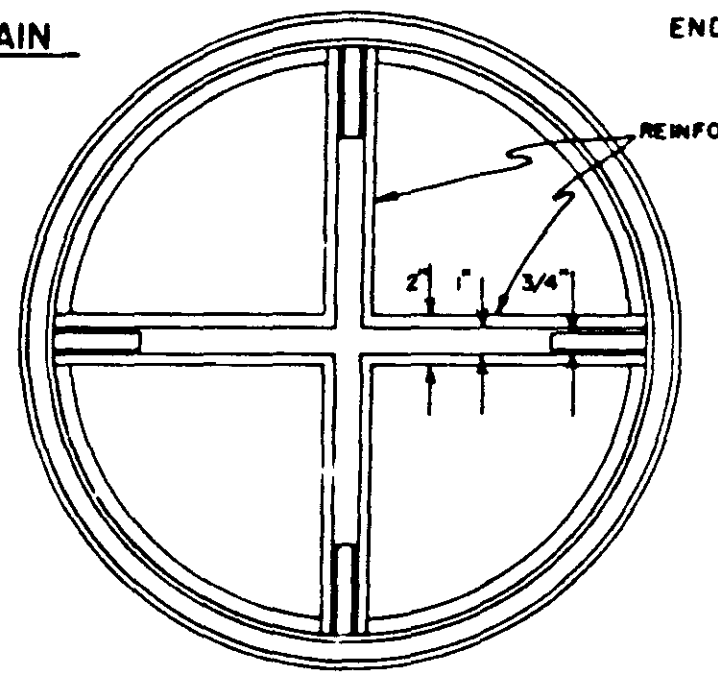


STANDARD CURB & GUTTER

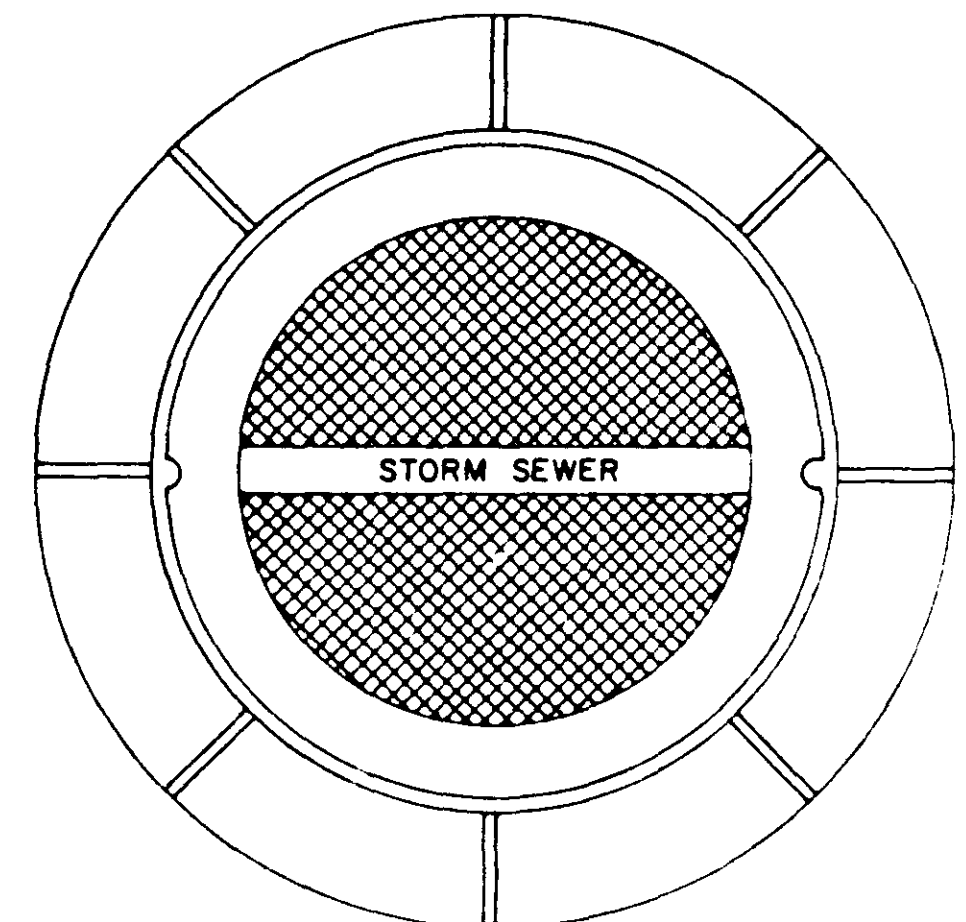
NOTE: ALL CURBS, GUTTERS & DRIVEWAYS TO BE CONSTRUCTED OF 3000 LB. CONCRETE



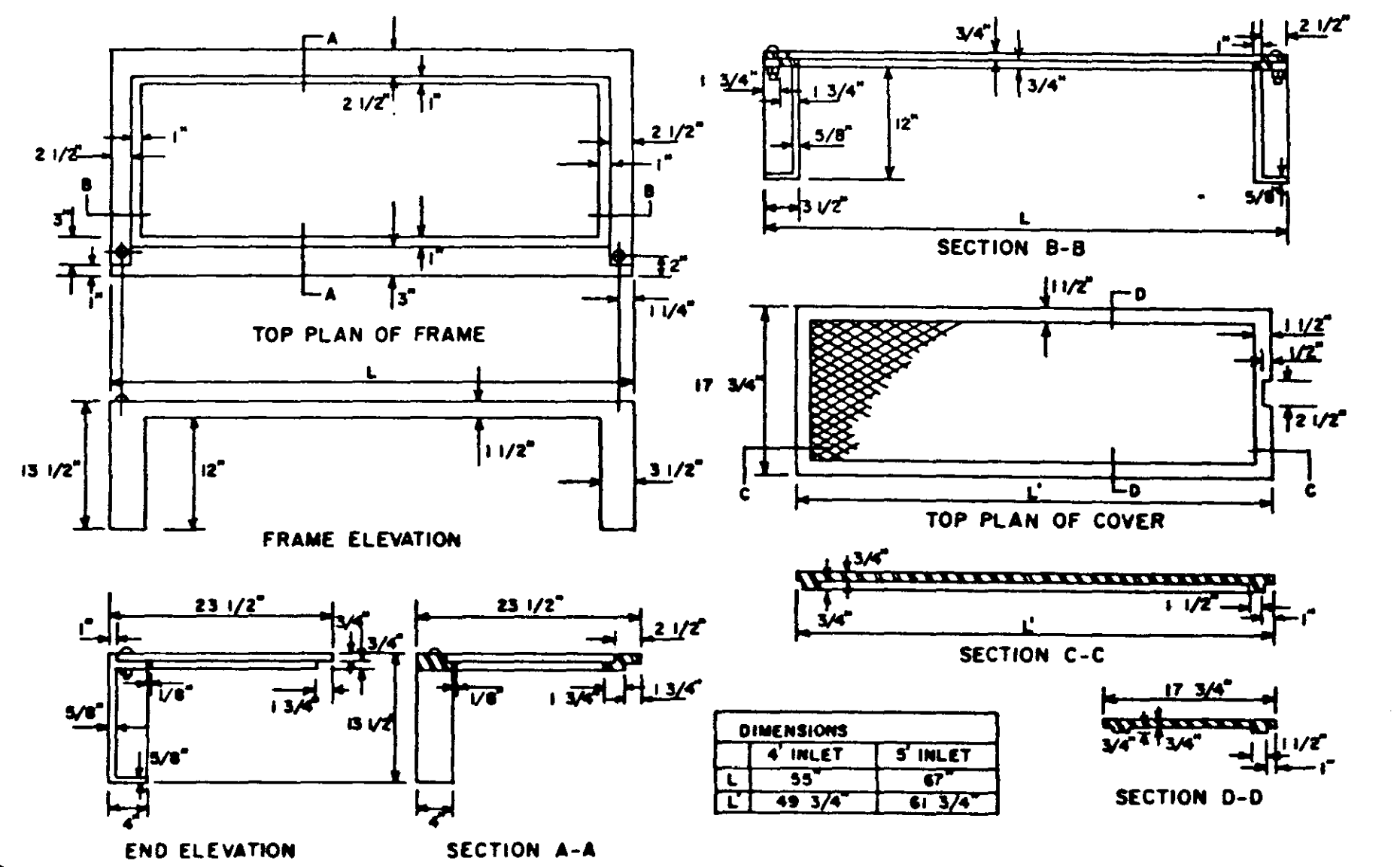
OPEN JOINT TILE DRAIN



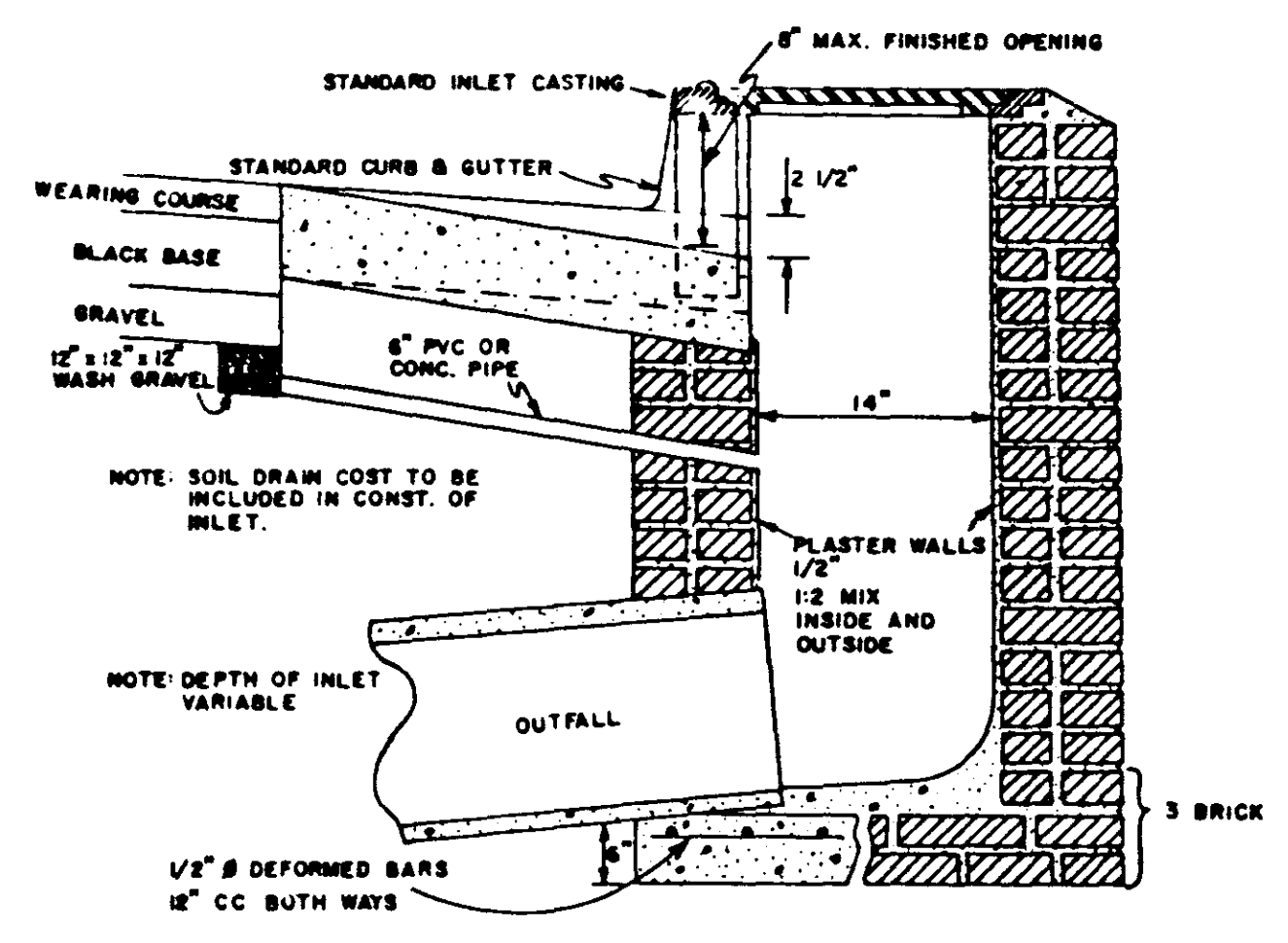
INVERTED PLAN OF COVER



PLAN MANHOLE CASTING

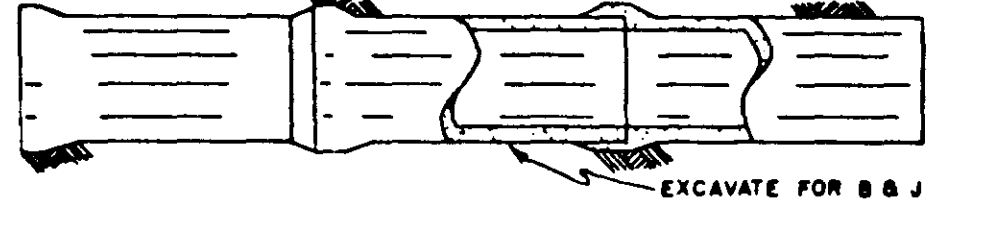


STANDARD CURB INLET CASTING



SECTION OF STANDARD CURB INLET

ALL STORM SEWER JOINTS TO BE WIPED WITH 1:2 MIX CEMENT FLOW FOR 0.5% GRADE OR BETTER



STORM SEWER CONSTRUCTION

DESIGNED	DATE
S.F.A.	11/1/85
DRAWN	SCALE
T.A.H.	NONE

STANDARD STORM SEWER & STREET DETAILS

PROJECT NO.
FILE NO.
SHEET NO.
57 666