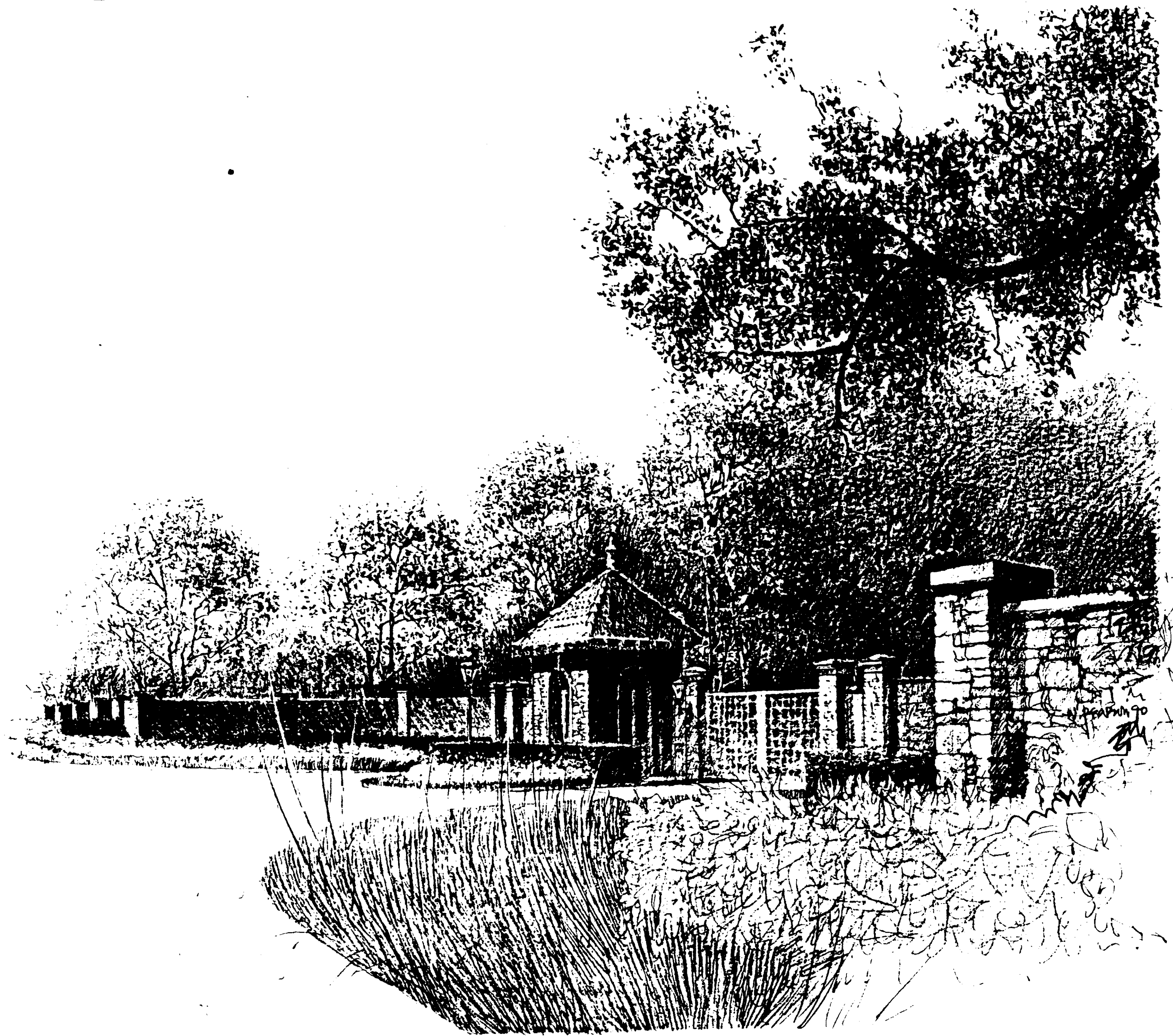


WINDRUSH

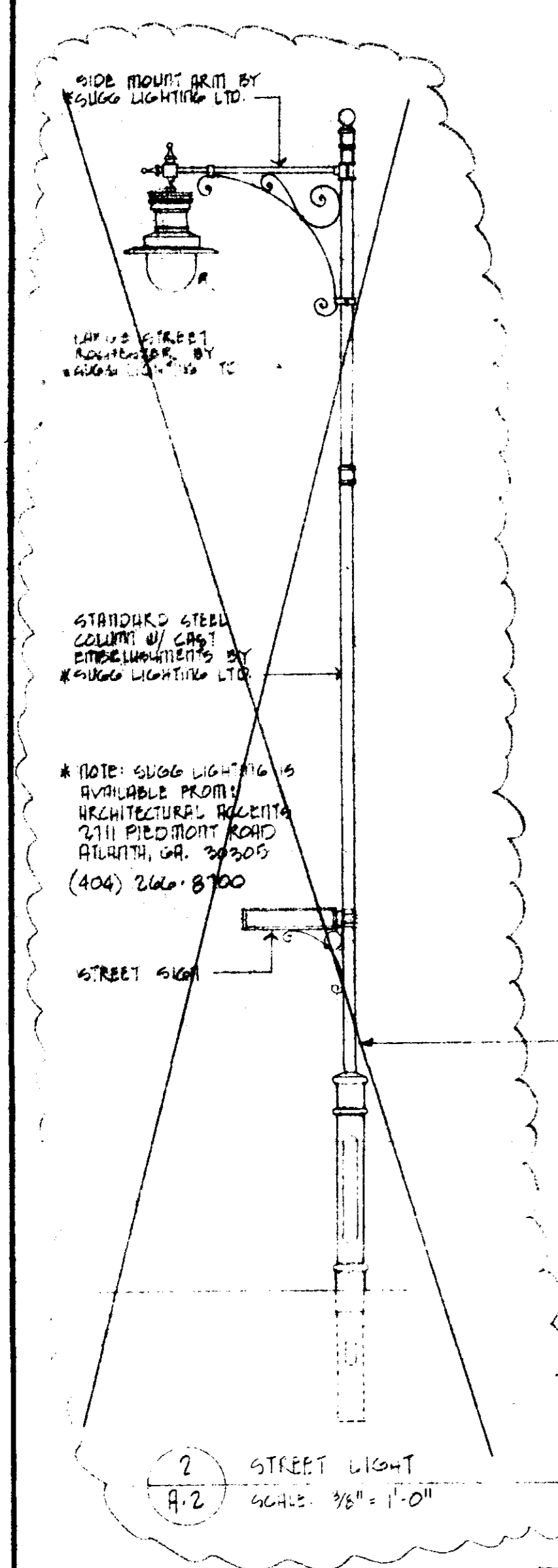


A Development of CRESS REALTY, LTD.

KEN TATE ARCHITECT

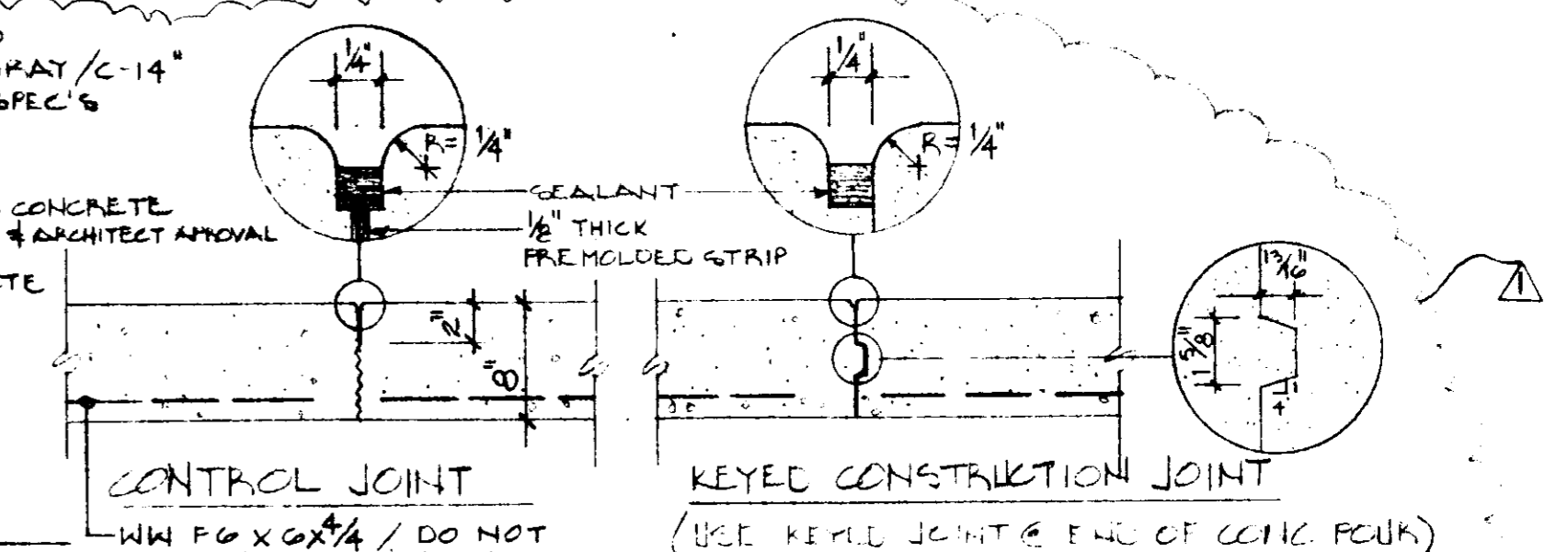
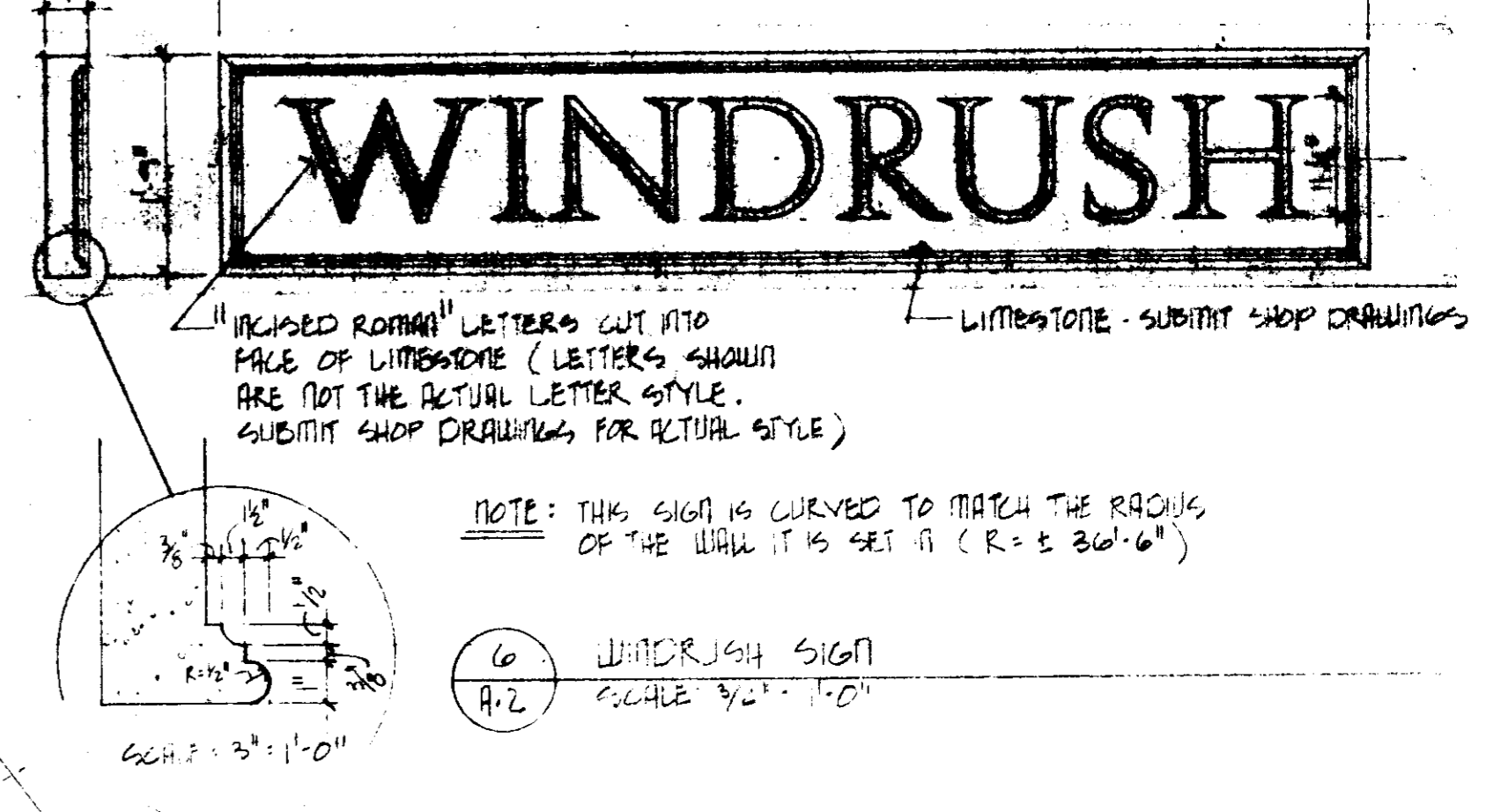
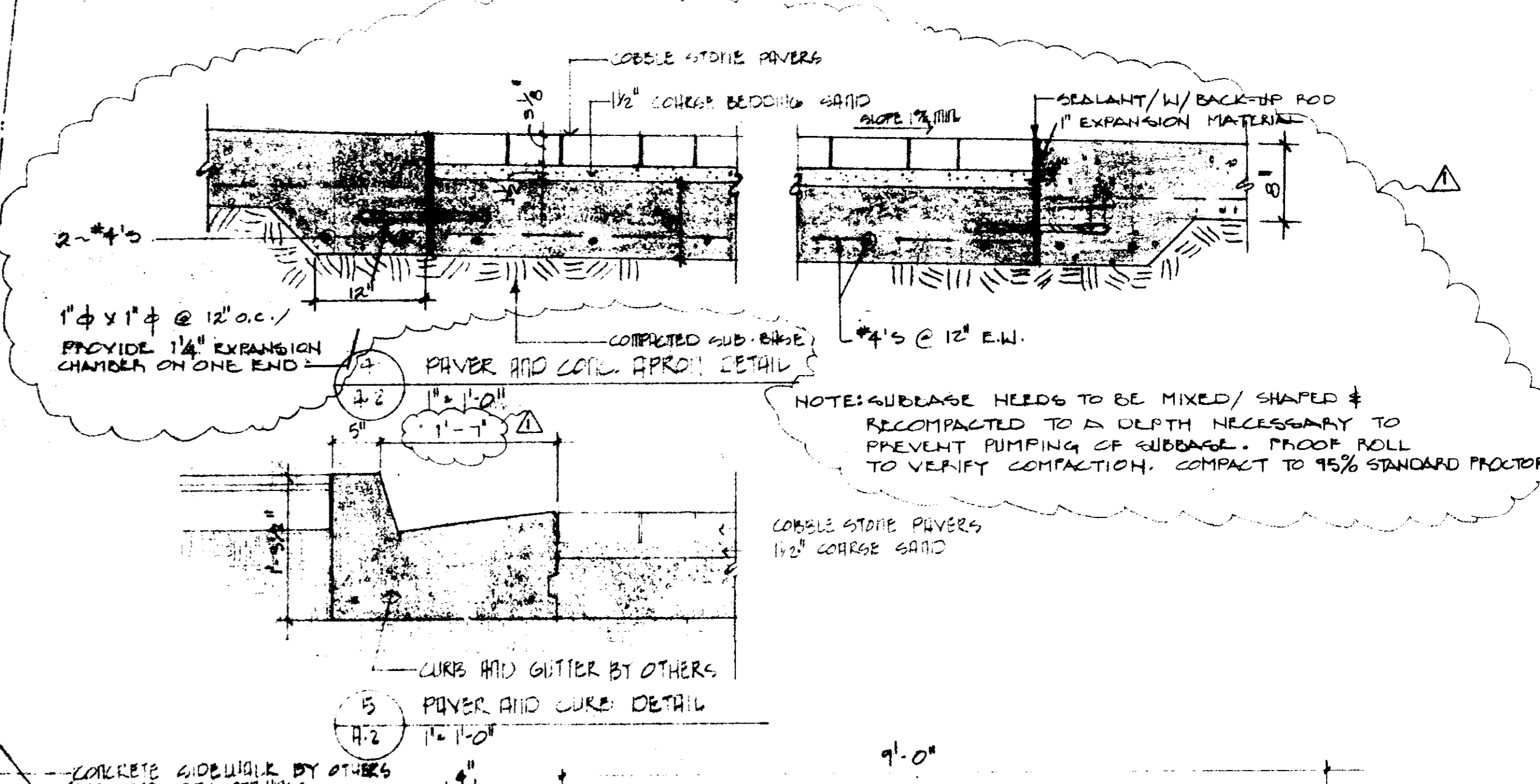
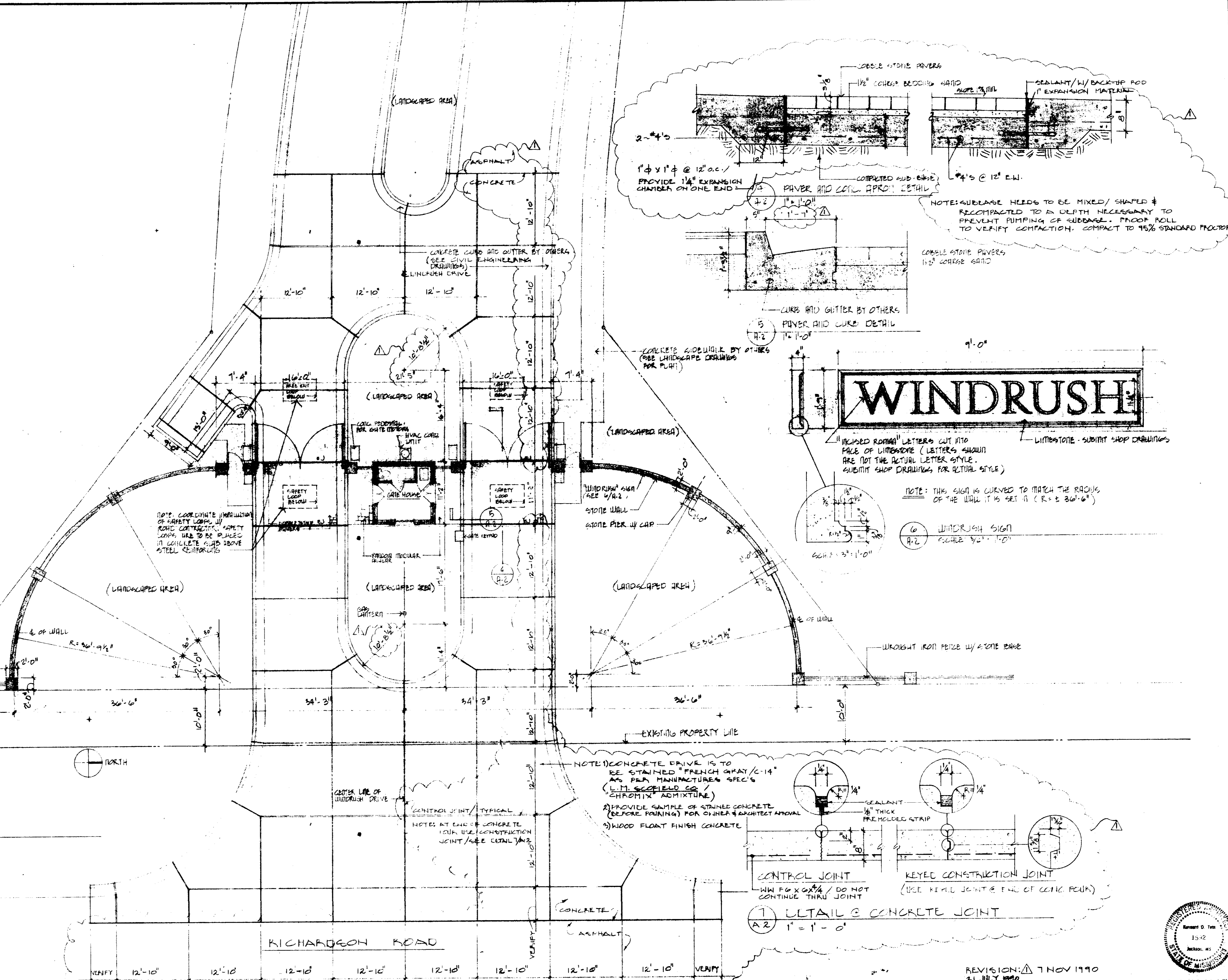
set no.

PWP-05014



OMIT THIS STREET LIGHT DESIGN

1 ENTRY GATE PLAN
A-2 SCALE: 1/8" = 1'-0"

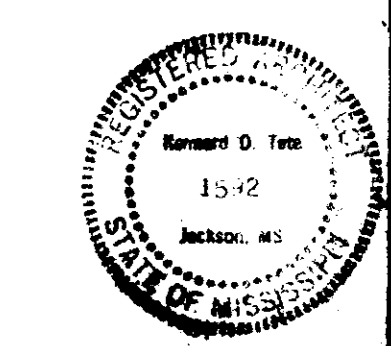


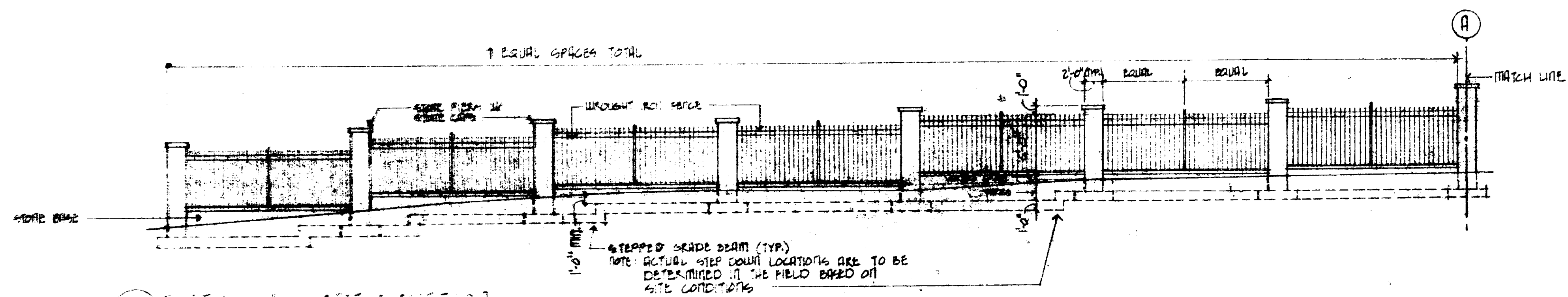
1 DETAIL OF CONCRETE JOINT
A-2 1" = 1'-0"

NOTE 1) CONCRETE DRIVE IS TO BE STAINED 'FRENCH GRAY/C-14' AS PER MANUFACTURER'S SPEC'S (L.M. SCOFFIELD CO. / 'CHROMIX' ADMIXTURE)
2) PROVIDE SAMPLE OF STAINED CONCRETE (BEFORE PAINTING) FOR OWNER'S ARCHITECT APPROVAL
3) WOOD FLOAT FINISH CONCRETE

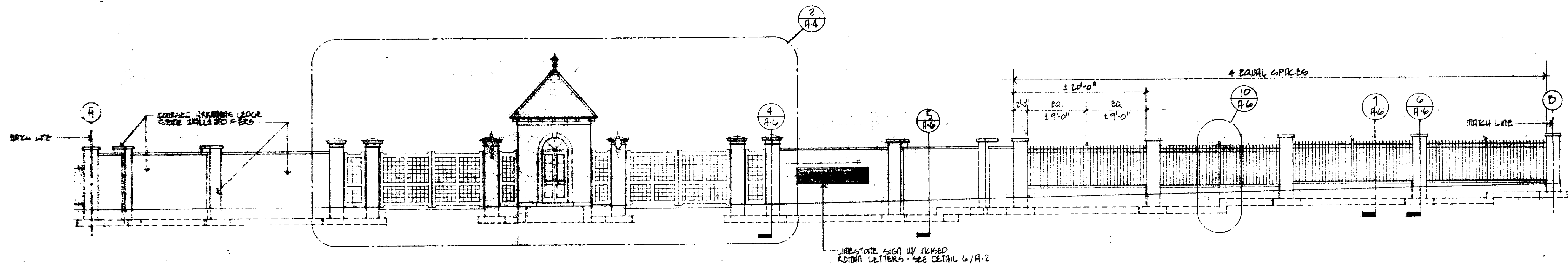
CONTROL JOINT - TYPICAL
NOTE: AT END OF CONCRETE POUR USE CONSTRUCTION JOINT / SEE DETAIL A-2

REVISION: 7 NOV 1990
31 JULY 1990

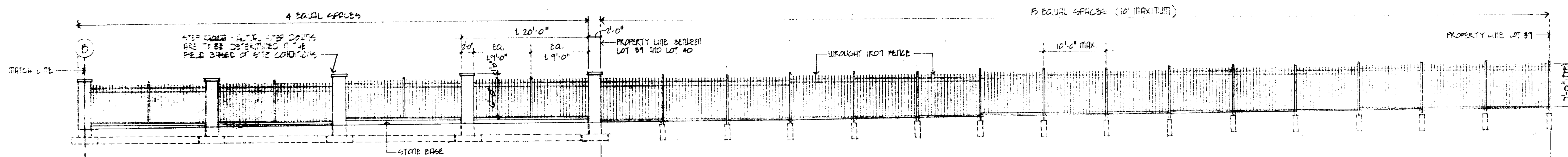




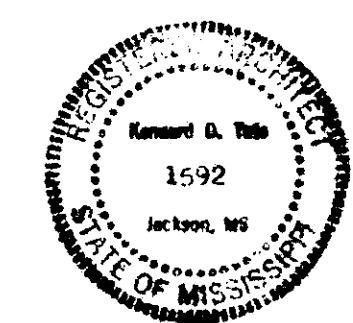
1 FENCE WALL EAST ELEVATION
4.3 15'-0"



2 GATE HOUSE AND PARTIAL WALL EAST ELEVATION
4.3 18'-0"

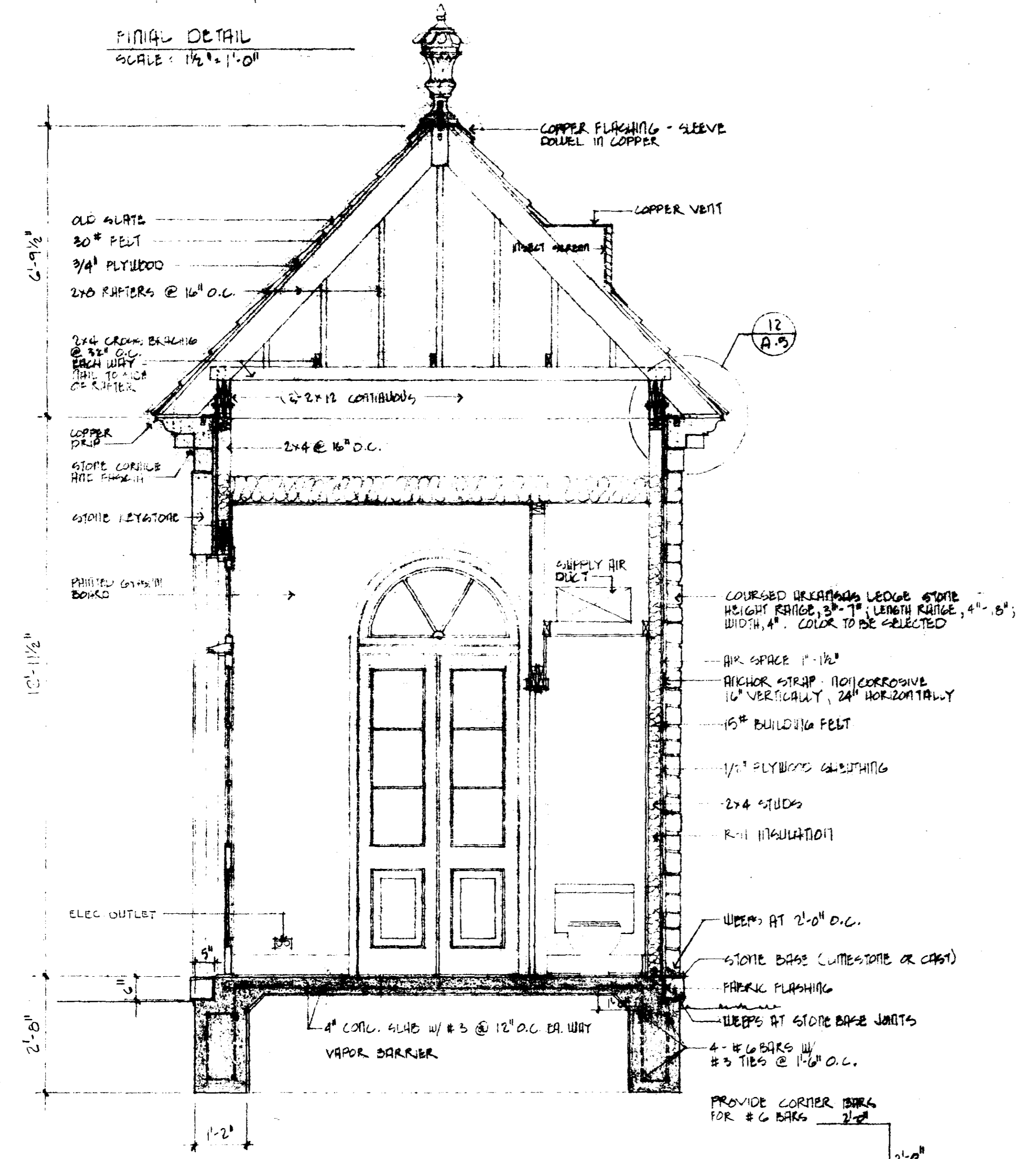
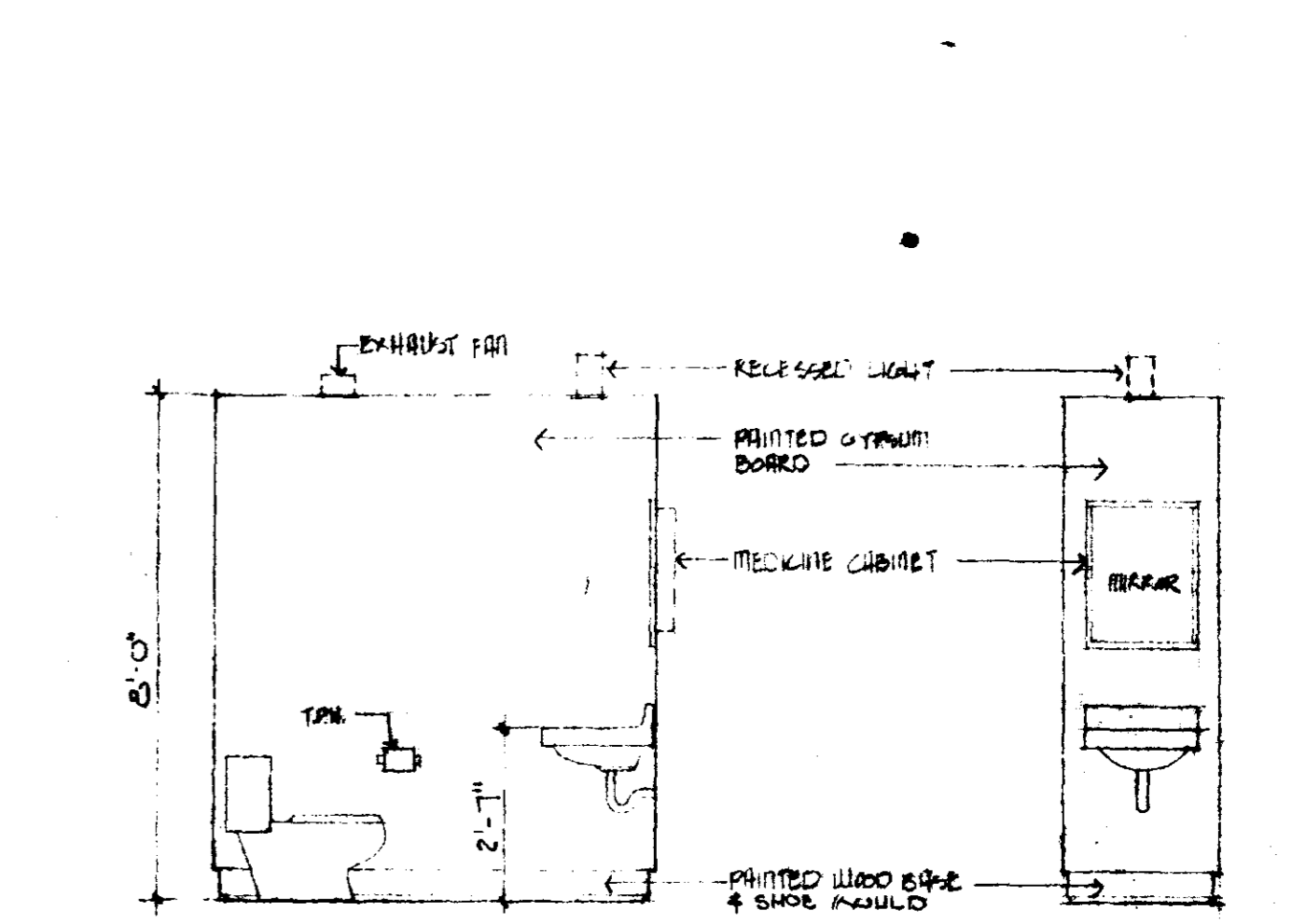
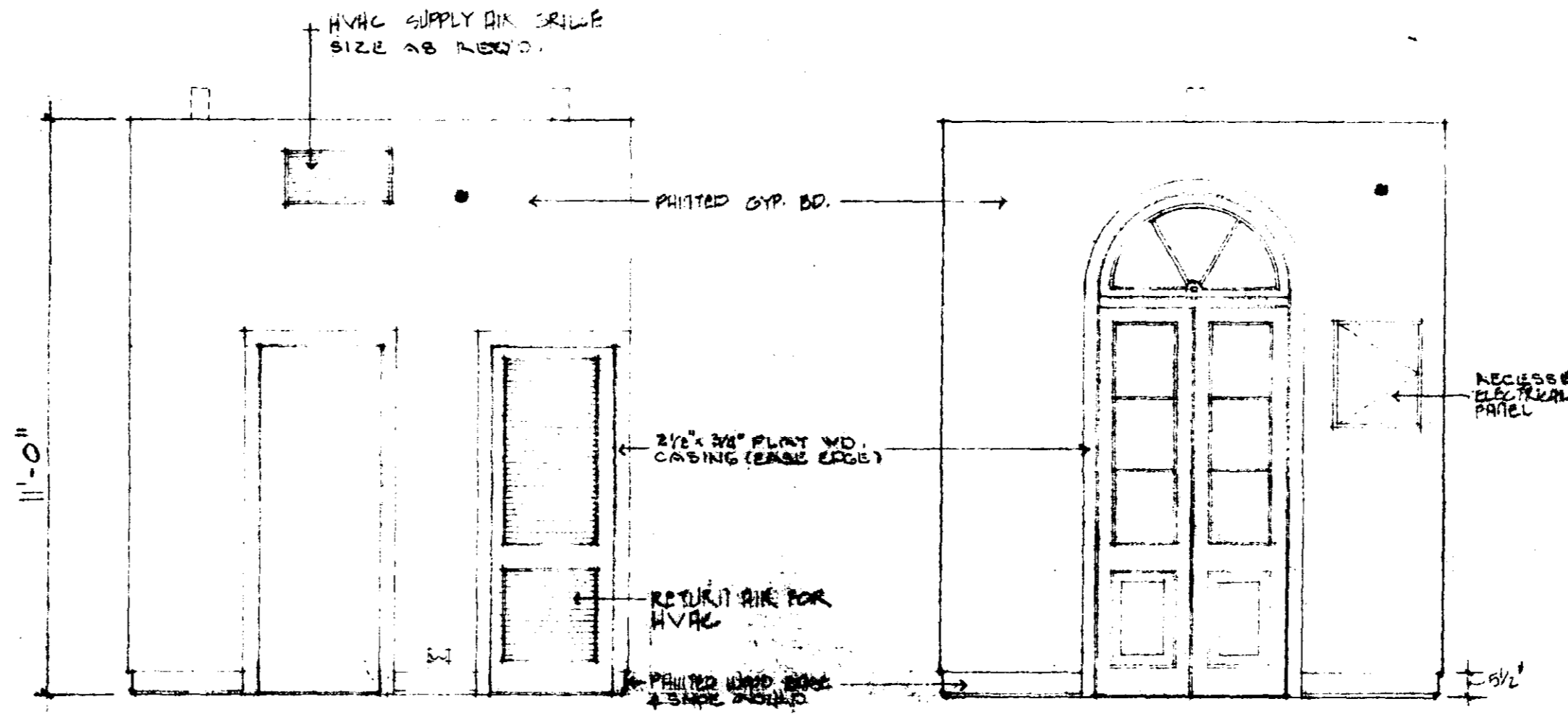
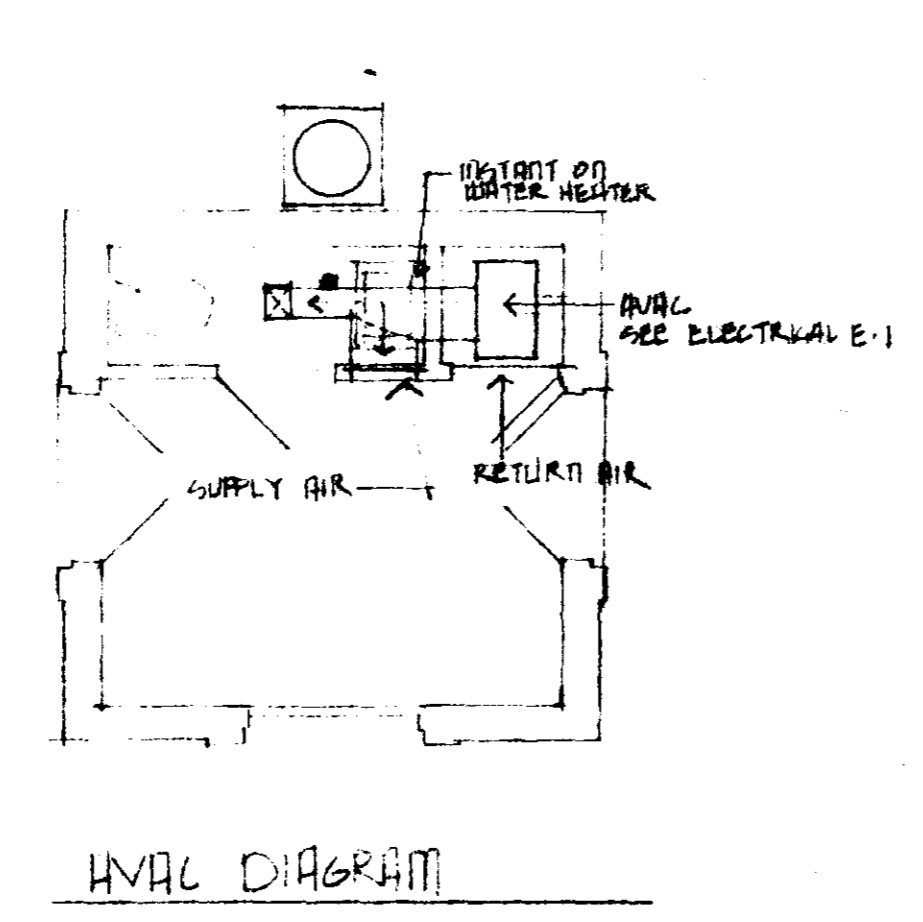
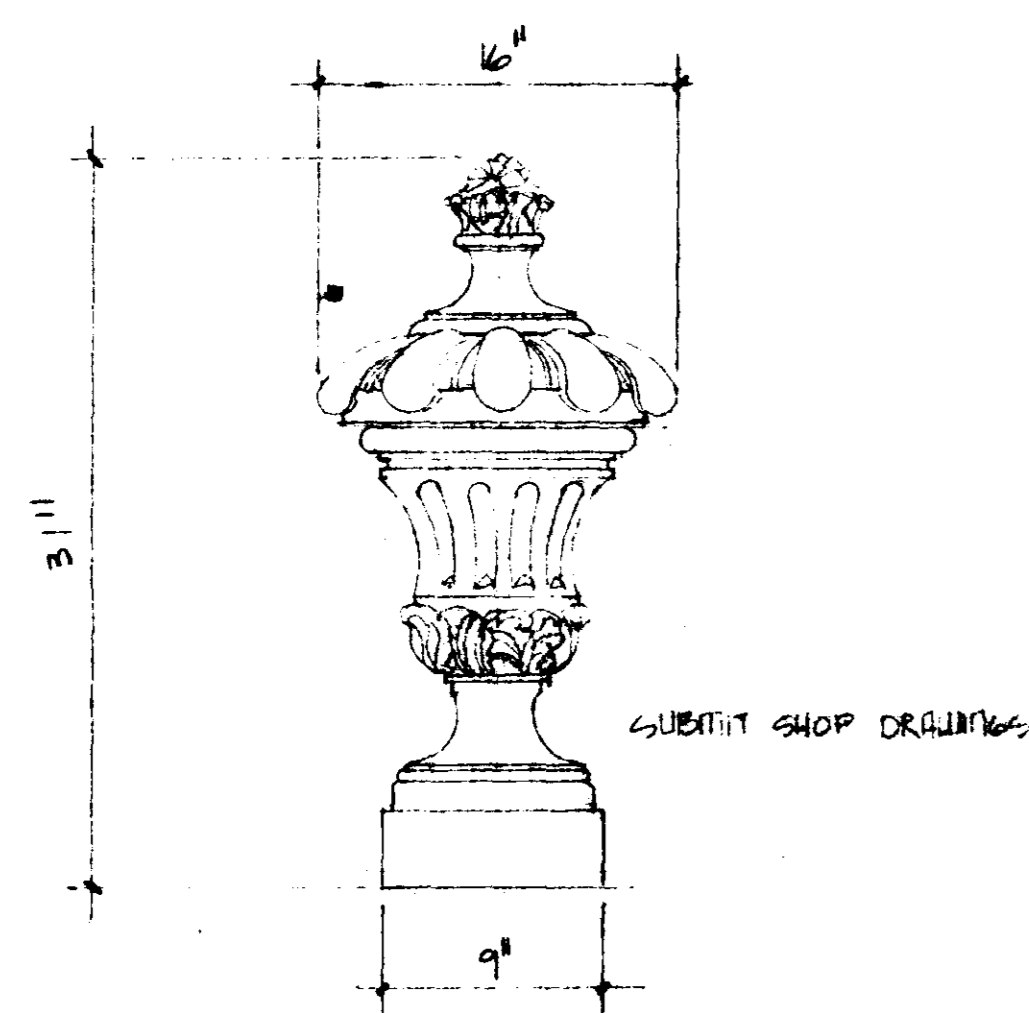


3 FENCE WALL EAST ELEVATION
4.3 15'-0"



21 JULY 1990

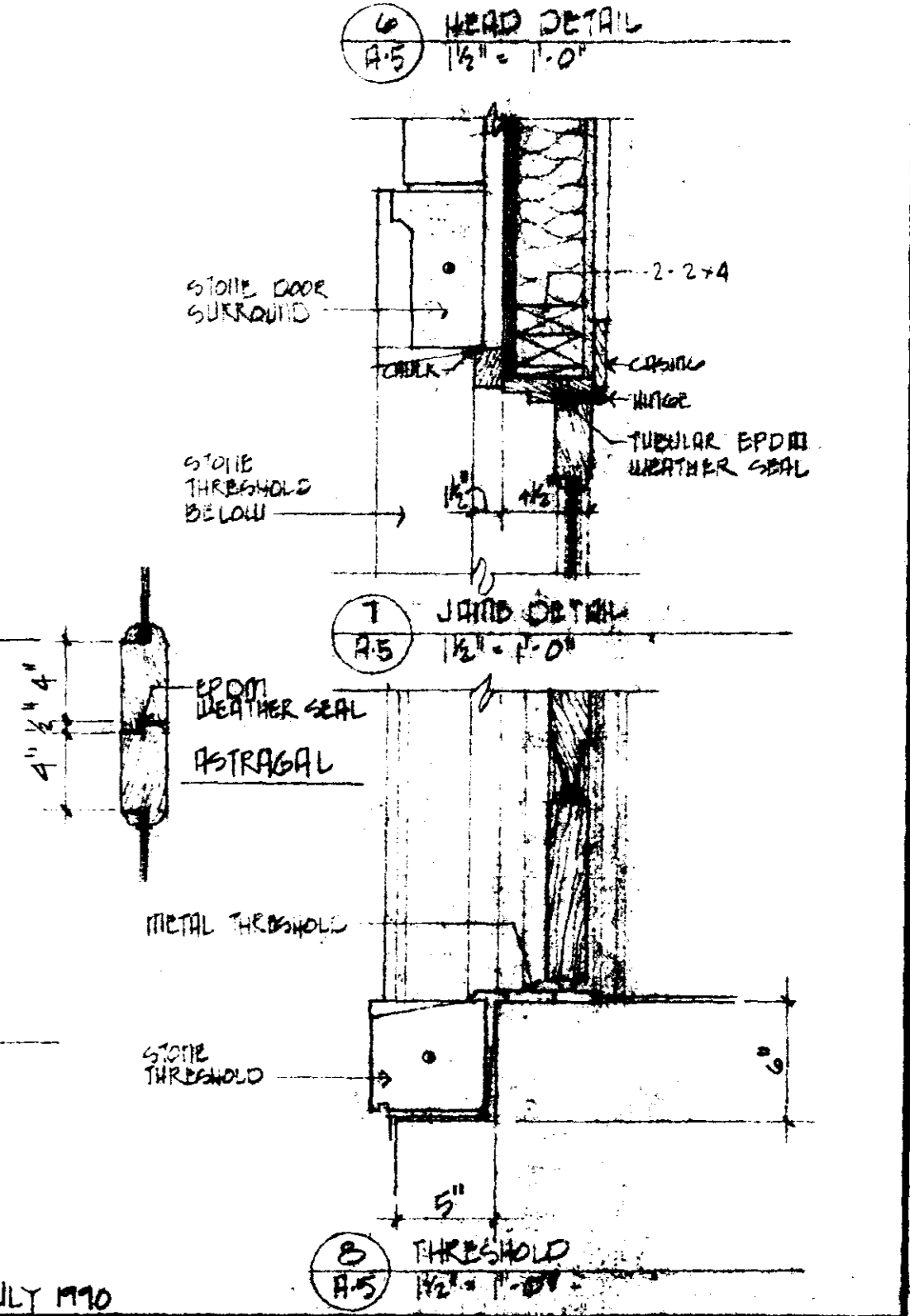
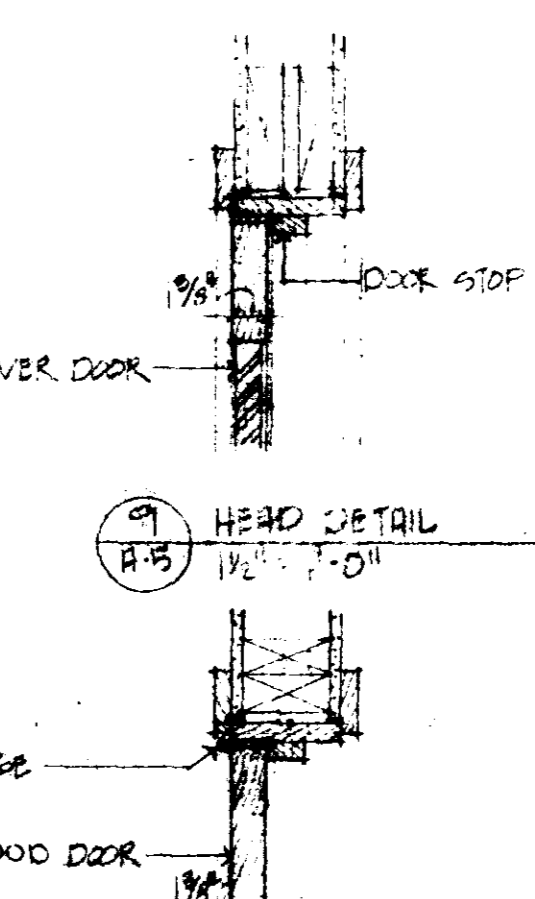
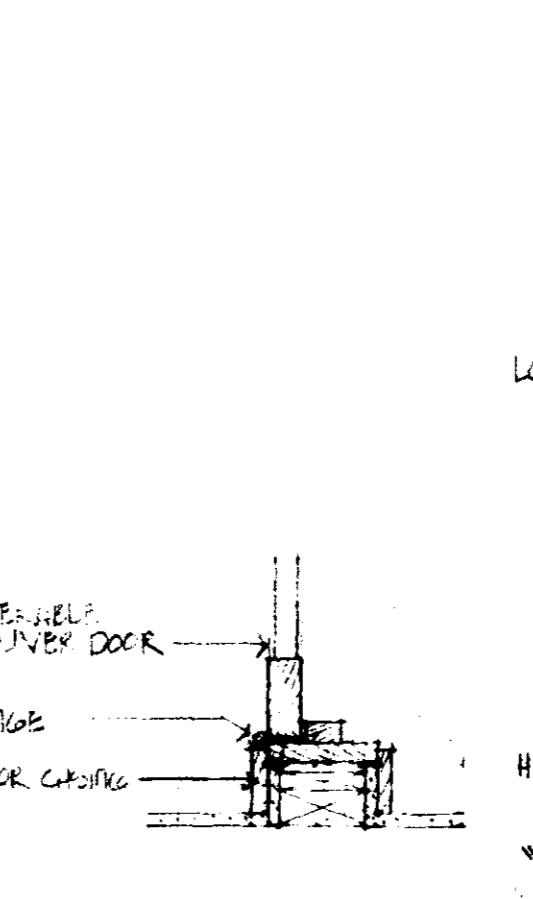
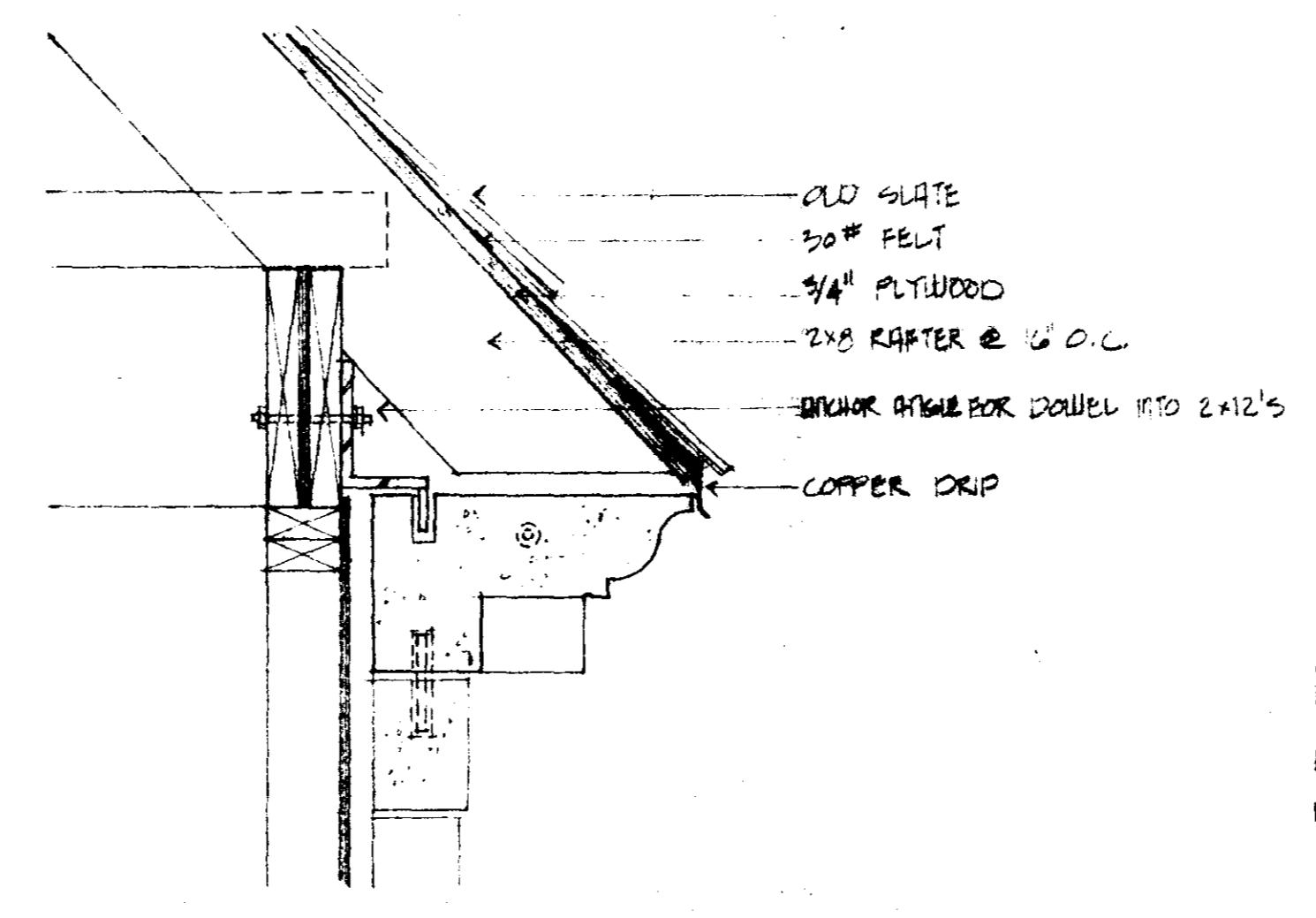
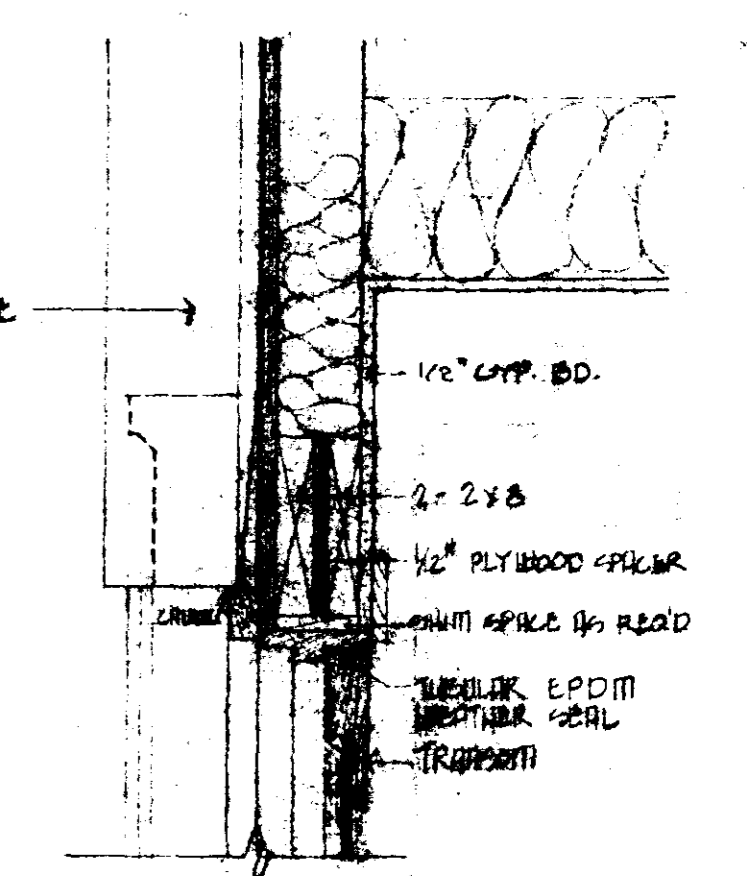
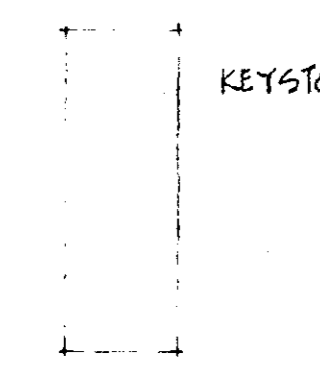
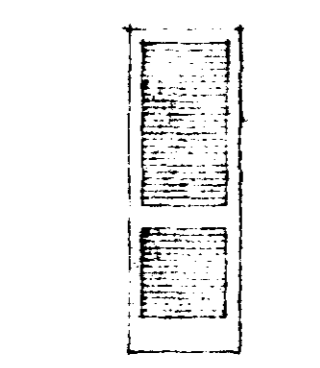
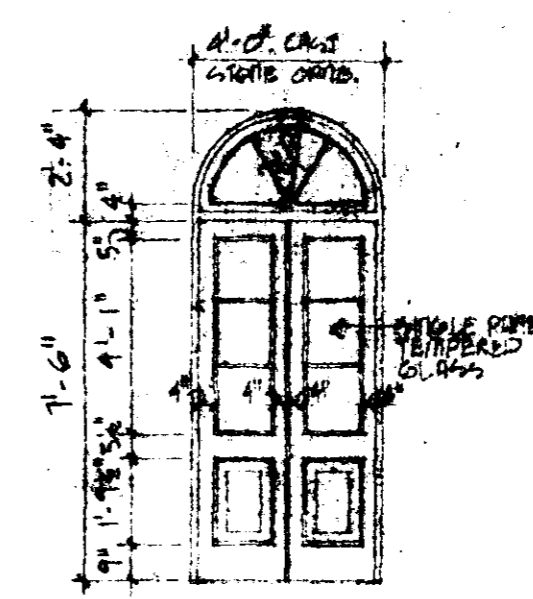
WINDRUSH **KEN TATE ARCHITECT** A-3
 187 Old Square Road - Suite 107 - Jackson, Mississippi 39201 - PHONE 392-3832



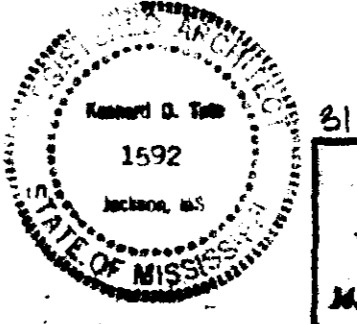
DOOR SCHEDULE

DOOR NO.	DOOR SIZE	DOOR TYPE	JAMB DETAIL	HEAD DETAIL	THRESHOLD	REMARKS
1	PAIR 1'-10" x 7'-6" x 2 1/4"	A	1/A-5	6/A-5	8/A-5	OPERABLE
2	PAIR 1'-10" x 7'-6" x 2 1/4"	A	1/A-5	6/A-5	8/A-5	FIXED (W/ HINGES)
3	PAIR 1'-10" x 7'-6" x 2 1/4"	A	1/A-5	6/A-5	8/A-5	OPERABLE
4	2'-0" x 6'-8" x 1 3/8"	B	10/A-5	7/A-5	-	VENTILATING
5	2'-0" x 6'-8" x 1 3/8"	C	11/A-5	7/A-5	-	

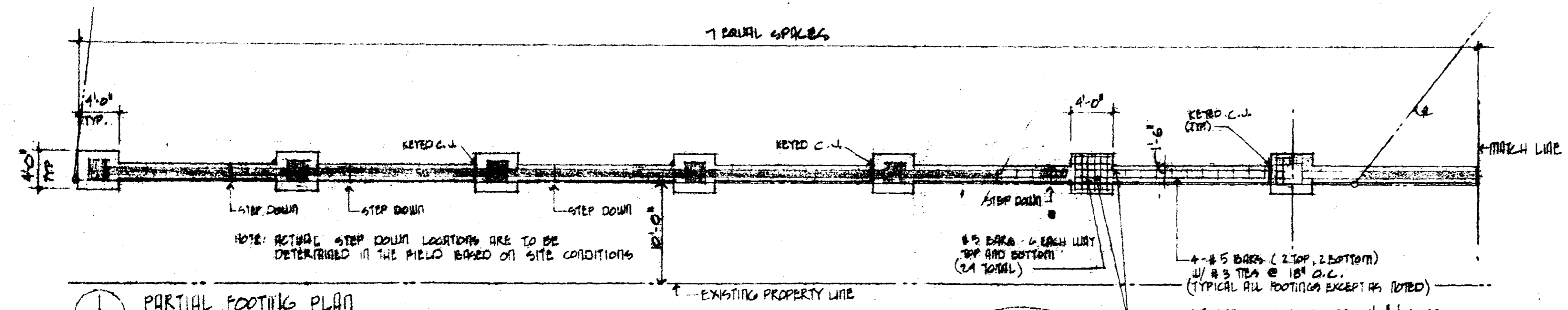
NOTE: PROVIDE HARDWARE ALLOWANCE OF \$1000.00



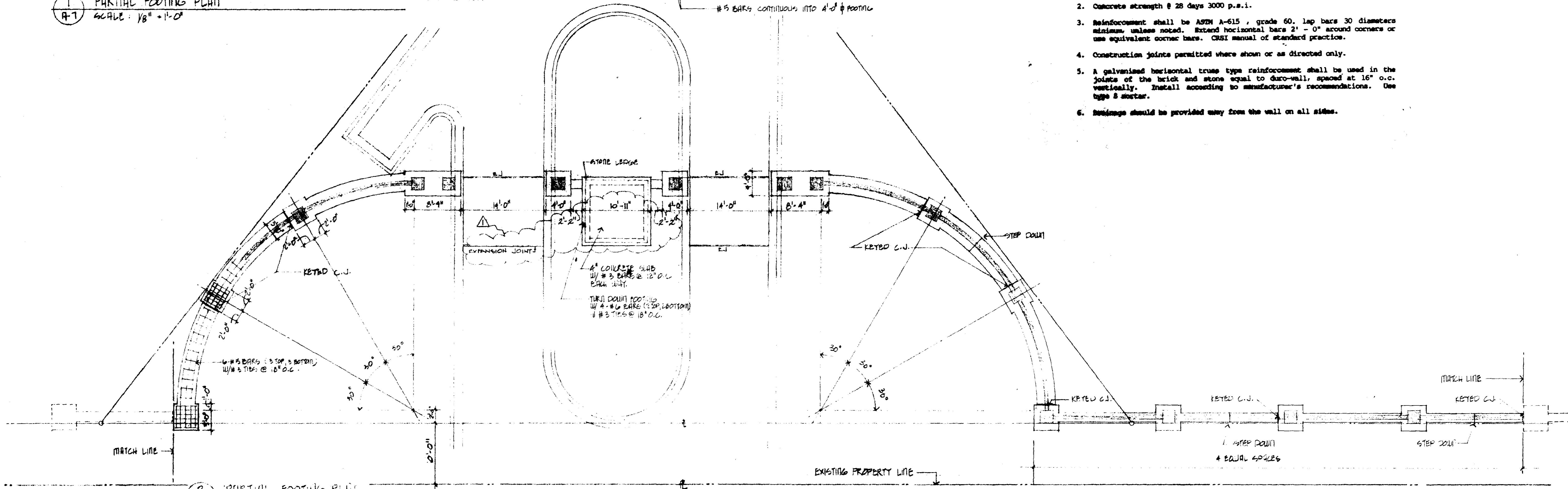
WINDRUSH



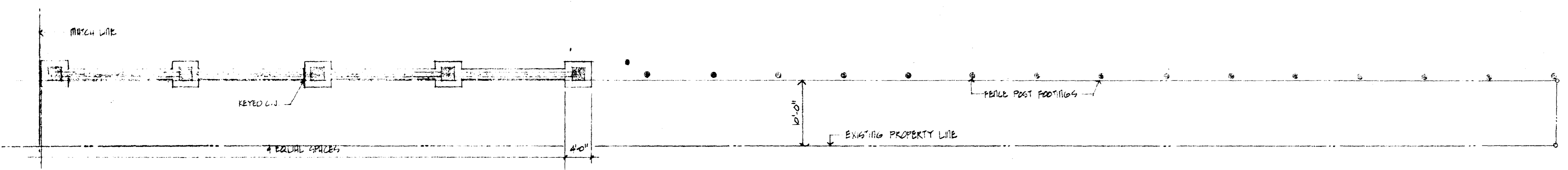
31 JULY 1990
KEN TATE ARCHITECT A-5
537 Old Square Road - Suite 107 - Jackson, Mississippi 39201



1 PARTIAL FOOTING PLAN
SCALE: 1/8" = 1'-0"



2 PARTIAL FOOTING PLAN
SCALE: 1/8" = 1'-0"

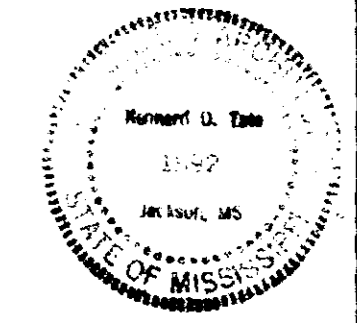


3 PARTIAL FOOTING PLAN
SCALE: 1/8" = 1'-0"

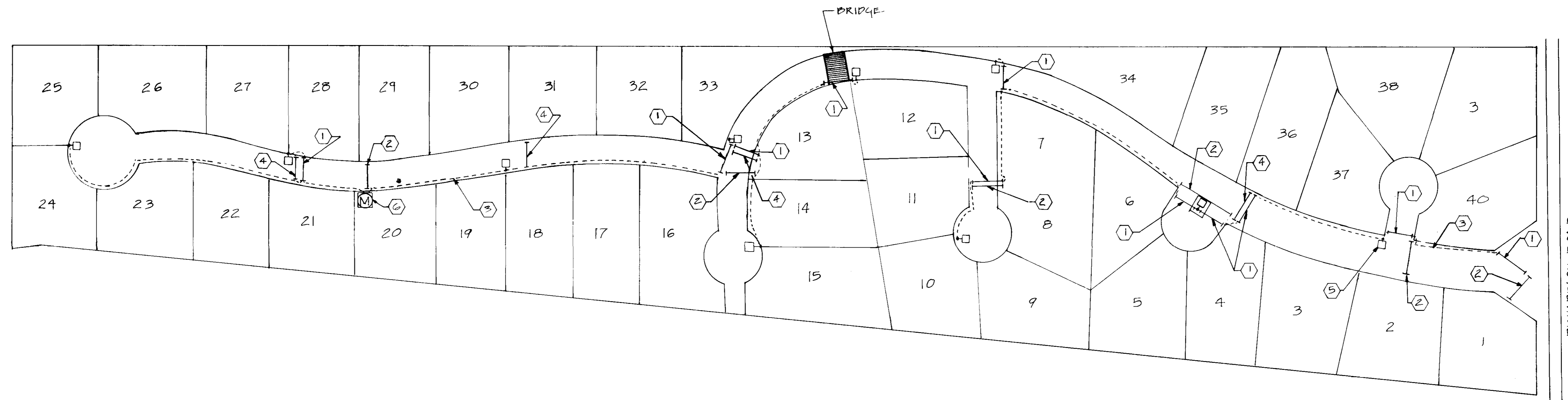
GENERAL NOTES

1. Contractor shall verify all dimensions and conditions at the site. Refer any discrepancy to the architect.
2. Concrete strength @ 28 days 3000 p.s.i.
3. Reinforcement shall be ASTM A-615, grade 60. Lap bars 30 diameters minimum, unless noted. Extend horizontal bars 2'-0" around corners or use equivalent corner bars. CRSI manual of standard practice.
4. Construction joints permitted where shown or as directed only.
5. A galvanized horizontal truss type reinforcement shall be used in the joints of the brick and stone equal to duro-wall, spaced at 16" o.c. vertically. Install according to manufacturer's recommendations. Use type 8 starter.
6. Brackets should be provided away from the wall on all sides.

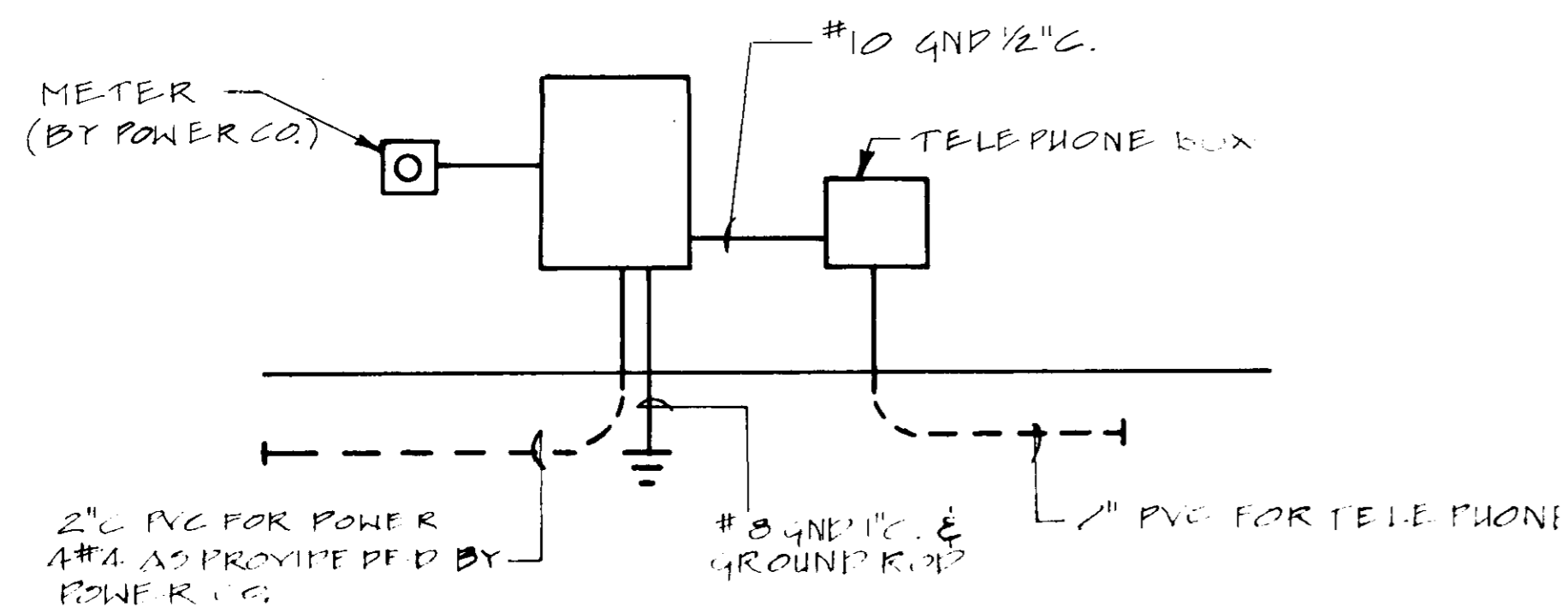
PRINTED
NOV 07 1990



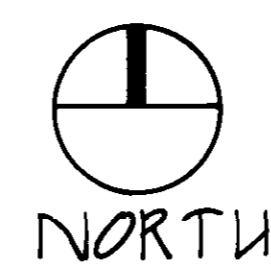
REVISION: Δ 7 NOV 1990
31 JULY 1990



PANEL BOARD "4" SERVICE ENTRANCE RATED P,
100A. MAINS 60A 3P M.B. 2-20/2

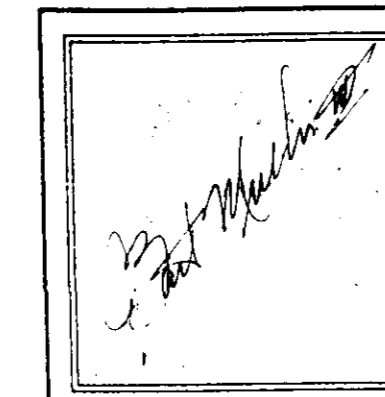


RISER DIAGRAM



KEYNOTES

- ① 2" PVC CONDUIT SLEEVE FOR LIGHTING. (TYPICAL)
- ② 2" PVC CONDUIT SLEEVE FOR POWER. COORDINATE WITH POWER CO. (TYPICAL)
- ③ 2" Ø, 1" 10 GND TRIPLEX DIRECT BURIAL CABLE FOR LIGHTING. (TYPICAL)
- ④ 3" PVC CONDUIT SLEEVE FOR POWER. COORDINATE WITH POWER CO. (TYPICAL)
- ⑤ LIGHTING STANDARD. COORDINATE WITH ARCHITECT. (TYPICAL)
- ⑥ METER BY POWER CO.



HUDSON
FRETTE
SIMONSON
MULLIS
AND
ASSOCIATES
INC.
CONSULTANTS • ENGINEERS • DESIGNERS
ATLANTA • JACKSON
2829 LANTANA DRIVE
JACKSON, MISSISSIPPI 39211
(601) 933-7478 FAX (601) 933-8778

WINDRUSH

KEN TATE ARCHITECT

E2

1437 Old Square Road • Suite 107 • Jackson, Mississippi 39211 • (601) 901-5586

20 JULY 1990