

GENERAL LAYOUT NOTES

1. BASE DATA PREPARED BY WAGGONER ENGINEERING, BRANDON, MS, JULY 1988.
2. IF THE CONTRACTOR IN THE COURSE OF WORK FINDS OR SUSPECTS ANY DISCREPANCY BETWEEN THE DRAWINGS AND PHYSICAL CONDITIONS OF THE SITE, OR WORK, OR ANY ERRORS OR OMISSIONS IN THE CONTRACT DOCUMENTS, HE SHALL IMMEDIATELY NOTIFY THE LANDSCAPE ARCHITECT, IN WRITING, AND THE LANDSCAPE ARCHITECT WILL PROMPTLY VERIFY. ANY WORK DONE AFTER SUCH DISCOVERY, UNLESS AUTHORIZED, SHALL BE DONE AT THE CONTRACTOR'S RISK.
3. ALL DIMENSIONS SHALL BE VERIFIED BY THE CONTRACTOR PRIOR TO CONSTRUCTION. ANY DISCREPANCIES SHALL BE REPORTED TO THE LANDSCAPE ARCHITECT IMMEDIATELY.
4. ALL ANGLES FROM DIMENSION, BASE, AND CENTERLINES ARE 90 DEGREES UNLESS OTHERWISE NOTED.
5. ALL STORM DRAIN PIPES, DESIGNATED BY (=====), ARE EXISTING.

PROJECT NOTES

1. SHEETS 2 & 3 ARE PROVIDED FOR YOUR INFORMATION. THEY INDICATE SITE CONSTRUCTION COMPLETED PRIOR TO THIS CONTRACT PERIOD, INCLUDING GRADING & IRRIGATION. NEW CONSTRUCTION SHALL NOT DEVIATE FROM ELEVATIONS SHOWN. ANY DAMAGE TO THESE PREVIOUS IMPROVEMENTS SHALL BE THE CONTRACTOR'S RESPONSIBILITY.
2. ALL BALLFIELD FENCING SHALL BE CHAIN LINK, EXCEPT OUT-FIELDS #1 & #2, WHICH ARE WOOD.
3. ALTERNATE #1 DUGOUT INCLUDES ENTIRE ROOF, CONCRETE SLAB, 8' CHAINLINK FENCE REAR & SIDES (FRONT IN BASE BID).
4. ALL CONSTRUCTION SHALL BE EQUAL TO OR EXCEED QUALITY & MATERIALS OF EXISTING COMPLEX. ANY DISCREPANCIES NOTED AFTER AWARD OF CONTRACT ARE THE CONTRACTOR'S RESPONSIBILITY.

UTILITY PROVIDERS  
 GAS - ENTEX  
 WATER - CITY OF RIDGELAND  
 ELECTRIC POWER - MISSISSIPPI POWER  
 SEWER - CITY OF RIDGELAND

LAYOUT PLAN

**BALLFIELD FENCING**  
 HITE B. WOLCOTT PARK - PHASE I  
 CITY OF RIDGELAND, MISSISSIPPI

NELL B. WADE & ASSOCIATES  
 LANDSCAPE ARCHITECTS - PLANNING CONSULTANTS

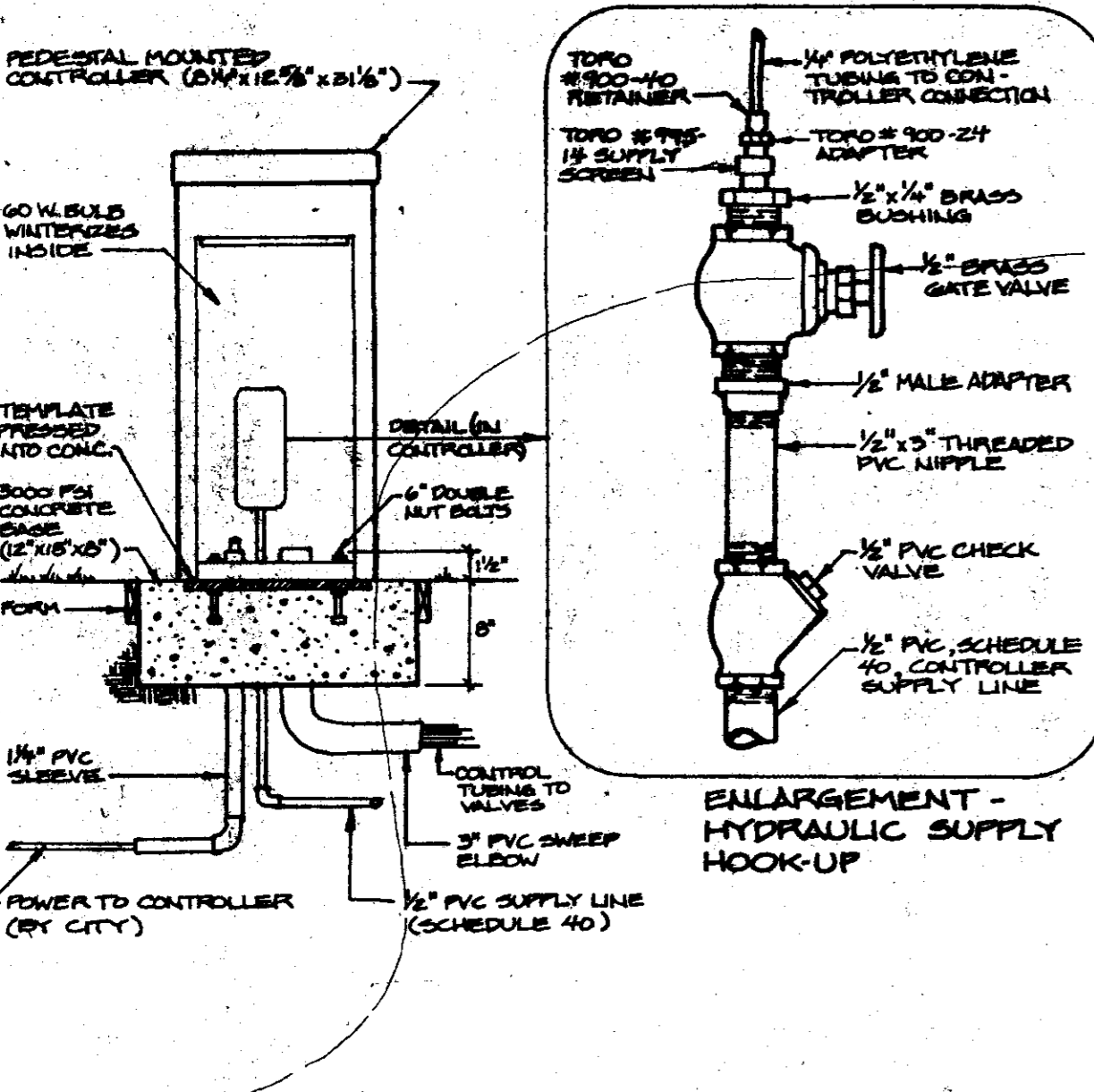
PWP-05016



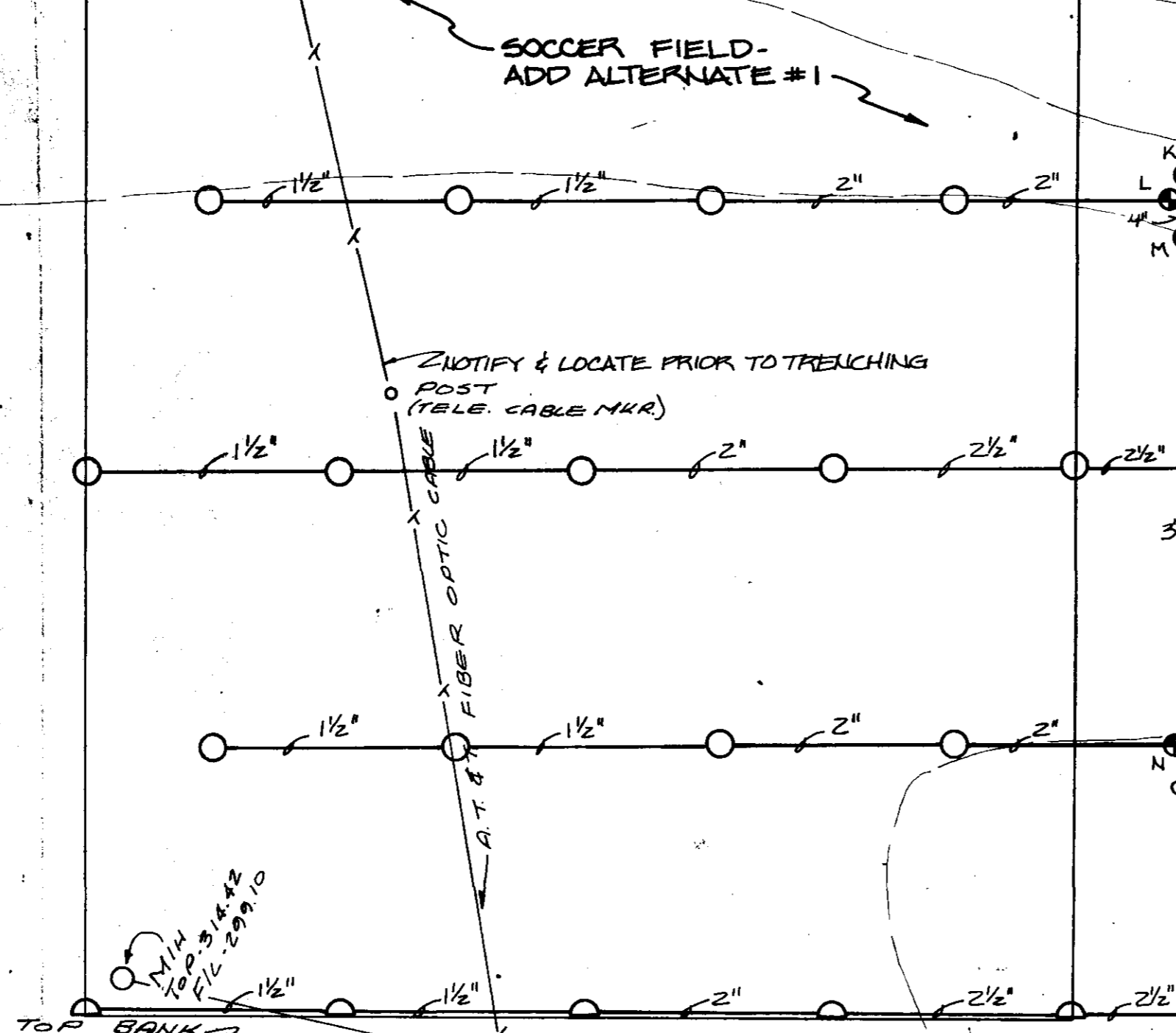


**SCHEDULE**

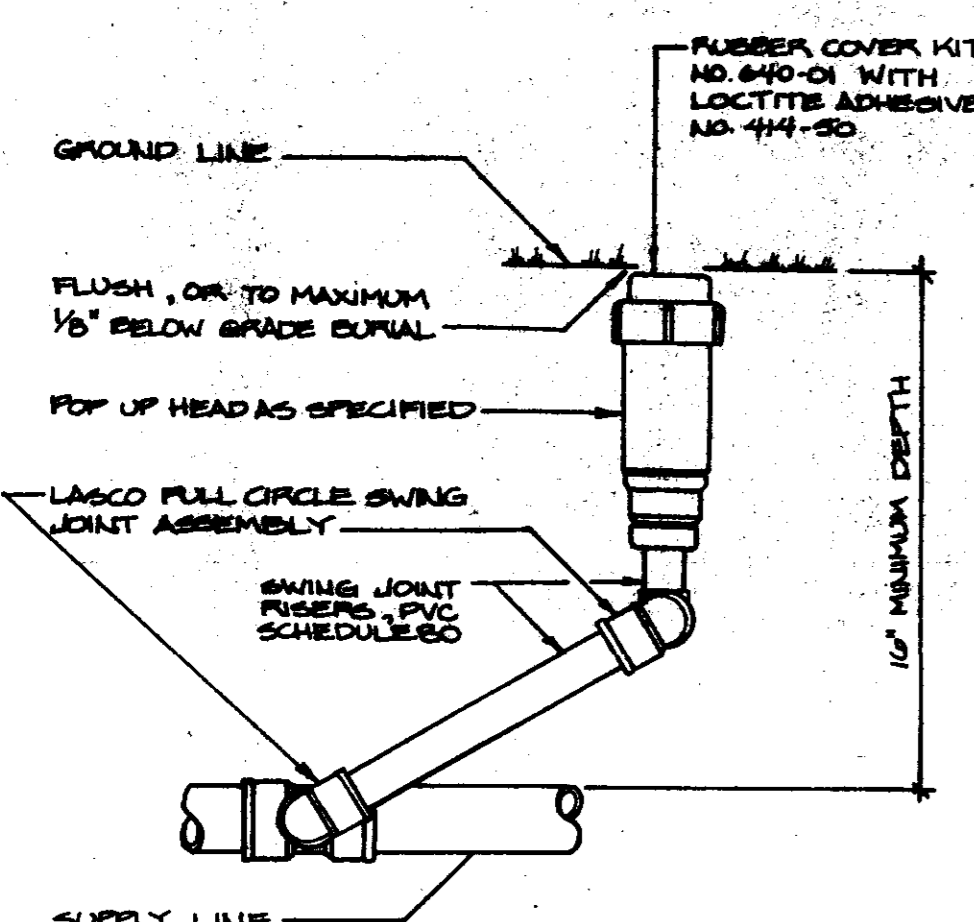
SYMBOL	QUANTITY	MODEL NUMBER
⊗	1	0
⊙	11	22
⊖	24	10
⊕	3	1
⊙	3	3
⊞	1	0



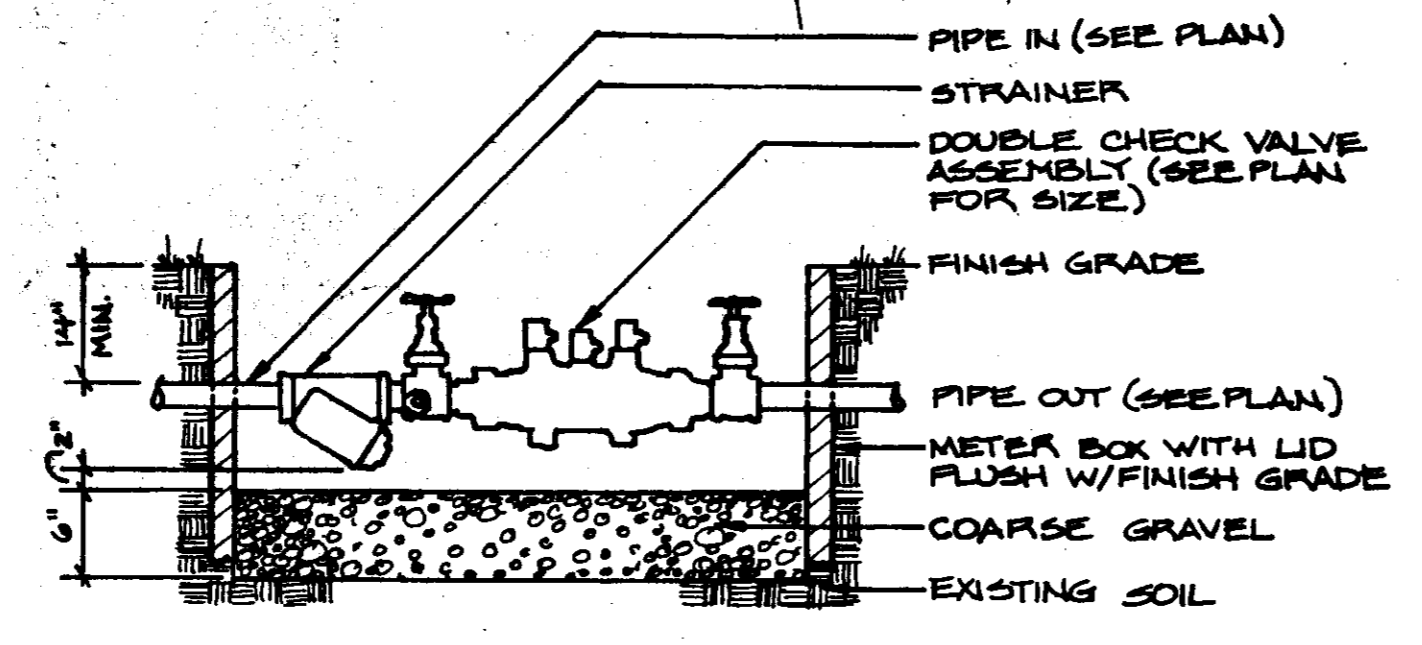
**3/12 CONTROLLER DETAIL**  
NO SCALE



**NOTES:**  
1. QUICK COUPLING VALVE INSTALLED WITH TYPICAL HEAD SWING JOINT ASSEMBLY; TOP FLUSH TO FINISH GRADE



**1/3 TYPICAL HEAD DETAIL**  
NO SCALE



**2/3 BACKFLOW PREVENTER**  
NO SCALE

- GENERAL IRRIGATION NOTES**
1. BASE DATA PREPARED BY WAGGONER ENGINEERING, BRANDON, MS, JULY 1988
  2. IF THE CONTRACTOR IN THE COURSE OF WORK FINDS OR SUSPECTS ANY DISCREPANCY BETWEEN THE DRAWINGS AND PHYSICAL CONDITIONS OF THE SITE, OR WORK, OR ANY ERRORS OR OMISSIONS IN THE CONTRACT DOCUMENTS, HE SHALL IMMEDIATELY NOTIFY THE LANDSCAPE ARCHITECT, IN WRITING, AND THE LANDSCAPE ARCHITECT WILL PROMPTLY VERIFY. ANY WORK DONE AFTER SUCH DISCOVERY, UNLESS AUTHORIZED, SHALL BE DONE AT THE CONTRACTOR'S RISK.
  3. THE IRRIGATION PLAN IS DIAGRAMMATIC IN NATURE. CONTRACTOR SHALL VERIFY ALL EXISTING CONDITIONS PRIOR TO INSTALLATION.
  4. ALL IRRIGATION PIPING SHALL BE CLASS 160 PVC PIPE, BURIED 16" BELOW FINISHED GRADE.

UTILITY PROVIDERS  
GAS - ENTEX  
WATER - CITY OF RIDGELAND  
ELECTRIC POWER - MISSISSIPPI POWER AND LIGHT  
SEWER - CITY OF RIDGELAND

**IRRIGATION PLAN (I.R.C.)**

**BALLFIELD FENCING**  
**HITE B. WOLCOTT PARK - PHASE I**  
CITY OF RIDGELAND, MISSISSIPPI

**NELL B. WADE & ASSOCIATES**  
LANDSCAPE ARCHITECTS - PLANNING CONSULTANTS  
4028 Old Canton Lane, Jackson, MS. 39206 (601)982-1328

BASE DATA: WAGGONER ENGINEERING INC.  
Consulting Engineers - Jackson / Brandon, Ms.

DRAWN BY: N.B.W.	DATE: 2-13-87	SHEET NO.
CHECKED BY:	7-26-88	3 OF 4
APPROVED BY:	SCALE: 1" = 30'	



